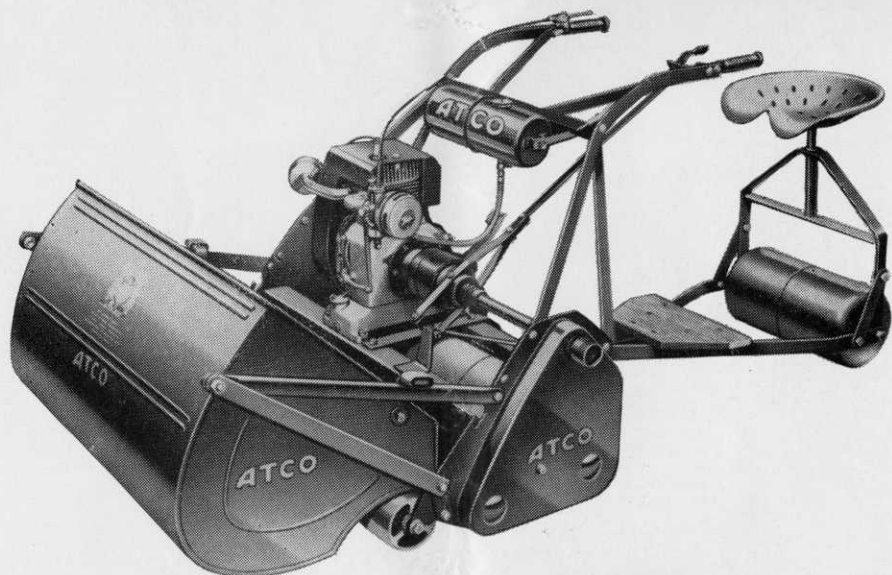




By Appointment to Her Majesty the Queen
Charles H. Pugh Ltd.
Motor Mower Manufacturers

Meet the best BIG Mowers in the business



... the **ATCO 28"** and **34"**

BIG value for money — BIG cutting capacity and a BIG future in front of it — that's what you get with the 28" or 34" Atco (available with or without trailer seat). Atco's knowledge of the problems involved in cutting large areas of grass is used to the full in the design and construction of these robust machines. And all through the long life of an Atco, it's comforting to know that the unique Atco service organisation is on hand to advise and help with all your grass cutting problems.

Let **ATCO**
work for you!

The best way to judge a mower's capabilities is to see it at work on your own turf. We will gladly arrange a demonstration of this or any other Atco at a time to suit your convenience. *If you prefer, free literature is available on request from*

CHARLES H. PUGH LTD., P.O. Box No. 256, ATCO WORKS, TILTON RD., BIRMINGHAM 9

GREENKEEPER

HON. EDITOR: F. W. HAWTREE



FOUNDED 1912

PUBLISHED MONTHLY FOR THE BENEFIT OF GREENKEEPERS, GREENKEEPING AND THE GAME OF GOLF BY THE BRITISH GOLF GREENKEEPERS ASSOCIATION

President:

CARL BRETHERTON

Vice-Presidents:

SIR WILLIAM CARR
R. B. DAWSON, O.B.E., M.S.C
F.L.S.
GORDON WRIGHT
F. W. HAWTREE
S. NORGATE
I. G. NICHOLLS
F. V. SOUTHGATE
P. HAZELL
W. KINSEY

Chairman:

C. A. MOORE
19 Vernon Drive
Stanmore, Middlesex

Vice-Chairman:

G. HERRINGTON

Hon. Secretary & Treasurer:

C. H. DIX
Addington Court G.C.
Featherbed Lane
Addington, Croydon, Surrey
CRO 9AA

Executive Committee:

Carl Bretherton (President)
G. Herrington, C. Campion,
R. Goodwin, S. T. McNeice,
J. Parker, J. Simpson,
A. A. Cockfield, H. M. Walsh,
E. W. Folkes, D. G. Lord

Hon. Auditors:

MESSRS. SMALLFIELD RAWLINS AND
Co., Candlewick House, 116/126
Cannon Street, London, E.C.4

Hon. Solicitor:

R. A. BECK
21 Lime Street, London, E.C.3

The Association is affiliated to the English and Welsh Golf Unions.

No. 278 New Series

MAY-JUNE 1968

WINDJAMMER

*While lofting a shot
To a suitable spot,
There blew a tremendous updraft;
When suddenly learning
My ball was returning,
Instead of "fore", I yelled "aft"!*

—SIDNEY BRODY

MAY-JUNE

CONTENTS

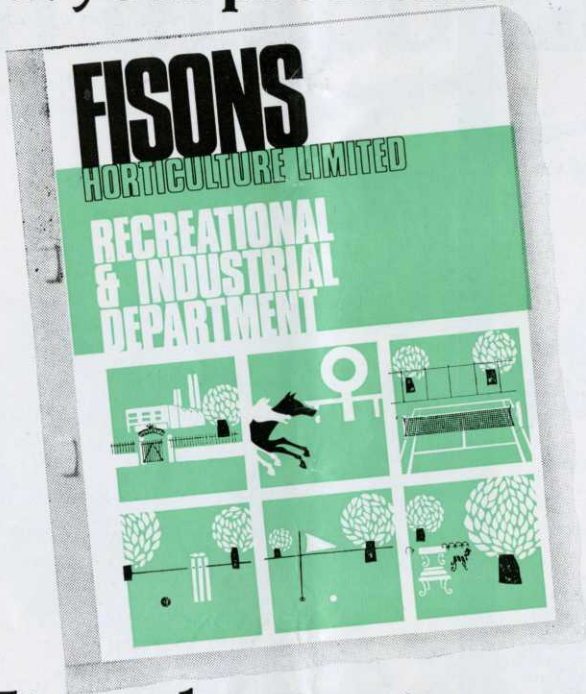
Page 3	TEE SHOTS
4	EARTHWORM CONTROL
6	GRUBBING BUNKERS
6	SITUATIONS VACANT, ETC.
7	SPECIAL OCCASIONS
8	EDITOR MOWING
13	TREAD CAREFULLY, STRANGER
14	EIGHTEEN HOLES WITH HAWTREE No. 2
17	SPORTS TURF RESEARCH INSTITUTE A.G.M. REPORT
18	NEWS FROM THE SECTIONS
20	MRS GREENKEEPER

EDITORIAL AND ADVERTISEMENT OFFICES: Addington Court Golf Club, Featherbed Lane, Addington, Croydon, Surrey. Telephone: 01-657 0281. SUBSCRIPTION RATE: 15/6 for 12 issues post paid. Published during the first week of each month. LATEST COPY DATE: 8th of month prior to insertion. All rights reserved. Reproduction of original articles and photographs in whole or in part is prohibited. This Magazine shall not, without the written consent of the publishers first given, be re-sold, lent, hired out, or otherwise disposed of. Contributions and photographs of interest are invited.

TO INSERT A CLASSIFIED ADVERTISEMENT, write to the Advertisement Manager at the above address. The rate is 6d. per word (minimum 15 words). Remittance must be sent with order. Please state number of insertions required and write advertisement in block letters. Advertisements will be inserted in the first available issue.

**Weeds? Worms? Drought?
Mud? Moss? Panning? Wear
and tear?**

**You could write a book
about your problems.**



**Fisons have written one
about some of the answers.**

We hope you have got it; if not, write to Fisons Horticulture Limited, Recreational and Industrial Department; Harvest House, Ipswich. (Ipswich 56721).

If your problem is not in the book, we'll be happy to send one of our specialists to see you – it's all part of the Fisons free advisory service.

TEE SHOTS



by the Editor

Municipal Round-up

Players on Harborne Church Farm, one of Birmingham's 9-hole municipal courses, are having restless rounds. Some years back one of the councillors had a big scheme to turn it into a floodlit driving range. After an all-out campaign by the club and local residents this was quashed. Now one of the committees is thinking of re-zoning it as building land coupled with plans for a new 18 holes in the Woodcote Valley. So another campaign has been launched and at least a temporary respite has been granted already.

* * * *

Sherdley Hall Farm has been chosen as the site for St Helens' new 18-hole municipal golf course. It adjoins Sherdley Park where a pitch-and-putt course is already doing good business.

* * * *

Work has started on Brentwood Municipal's extension from nine to 18 holes. Mr E. W. Hunt, the parks superintendent, is in charge and, judging by progress in the first few weeks, will be well ahead of schedule when he sows later this year.

* * * *

Rotherham Parks Department has also begun the new 18-hole municipal golf course in Grange Park. This is an attractive site close to the centre and more rural than could be believed possible with heavy industry all around.

**everything
for the Golf
Course**

Turf cutting machines. Flagstaffs and Flags. Hose reels. Tee Mats. Mud brushes. Drag brushes. Sprinklers. Gang rollers. Harrows. Line Markers. Tools. Machines of all types for everything concerned with Golf courses.

Send for catalogue.

PATTISSON

H. PATTISSON & CO. LTD. STANMORE MIDDLESEX
Telephone: 01-954 4171

EARTHWORM CONTROL

by R. H. Wharton

An important distinction

Worm control and wormkilling are not synonymous though in the minds of many people a clear distinction between the two is not drawn. Controlling earthworm activity by wormkilling normally becomes necessary only when worm control through management has not been satisfactory. On new turf areas wormkilling may be an entirely reasonable approach but on established grounds general maintenance of the turf should be so directed as to keep out earthworms thus making wormkilling operations unnecessary.

Wormkilling — the lesser problem?

In some ways wormkilling is simpler than worm control. It is a reasonably straightforward business for many people with turf areas although the question of possible toxicity to humans and animals has to be taken into account. The two most popular materials are probably Chlordane and lead arsenate but occasionally either material can produce disappointing results. Chlordane has advanced in popularity in recent years, it being quite quick acting and reasonably long lasting while the material is usually quite convenient of application. The price per unit area tends to be lower than that with lead arsenate. Some of the few disappointments with Chlordane have perhaps stemmed from the material adhering to grass foliage and being mown off before being effectively washed into the soil. Chlordane is often applied as a liquid formulation but a dry formulation is also available and this may be particularly useful on some occasions.

Lead arsenate, of course, has been established as a useful material for many years and since it is usually quite long lasting, economics are sometimes in its favour despite its initial high price. Because of its high price and the occasional failure experienced it is advisable to carry out small trials in

the first instance and not embark on large expenditure before the results of the trials are known.

There are quite a few other materials used for worm control, e.g., Derris Dust, Mowrah Meal, etc. and, of course, there is the new material, Sevin (carbaryl) which does not seem to persist very long in the soil.

Because of cost, wormkilling operations are frequently restricted to the relatively small areas of greens, approaches and tees, although with the increasing demand for better facilities more and more clubs are finding it possible to treat their fairways when necessary.

Proper maintenance the first consideration

It is surprising how often maintenance techniques which are quite well known for encouraging earthworms are nevertheless persisted in. Particularly for those clubs who are short of money more attention to this aspect of the problem is well worth while.

Many tees are mown without the box on the mower and spreading the cuttings like this produces decomposing organic matter which encourages earthworm activity. Excessive use of decomposable organic materials of any kind is also liable to encourage earthworms, e.g., organic fertilisers and dried sewage, etc. Dried sewage frequently contains quite a lot of lime and lime applications (though sometimes essential) are known to favour earthworms.

Correct management practice in all its aspects should be aimed at producing a strong, hard-wearing turf and this in itself is often the best protection against a lot of the troubles which afflict us.

Fairway improvement

In the last few years much more attention has been given to fairways

(Continued on page 12)



CANNOCK

GREENEX

FERTILISER

Cardiff Arms Park, where the turf is kept to perfection with Greenex.

**THE MOST
IMPRESSIVE
SPRING AND
SUMMER
DRESSING
YET OFFERED**

Greenex is designed to meet the exacting demands of greenkeepers and groundsmen for the ideal Spring-Summer fertiliser. It is an economical, high-nitrogen fertiliser which not only gives an immediate response when applied, but goes on providing nitrogen to the grass through the growing season, keeping the sward green and luxuriant continually for many months.

Four different kinds of nitrogen are incorporated into Greenex, which give a quick, followed by a medium, then a slow-acting and prolonged feed.

It is specially designed without phosphates, and so will not encourage clover. Where Greenex is used in Spring or Summer, **Cannock Winter Feed**, with its high proportion of phosphates, provides the perfect balance for Autumn and Winter months.

Big savings on bulk purchase. Please send for the 14th edition of "Green Keeping" containing full details of all Cannock laboratory-tested fertilisers and grass seeds, and price list.

THE CANNOCK AGRICULTURAL COMPANY LIMITED, CANNOCK, STAFFS.

Fertiliser Manufacturers and Lawn Seed Specialists since 1861.



GRUBBING BUNKERS

by S. J. PAUL

Head Greenkeeper, Belvoir Park Golf Club, Belfast

IN the past, most greenkeepers and their staff have had the laborious task of keeping bunkers in order by grubbing them by hand. This job is usually done by using draw-back grubbers, a back-aching job taking up a lot of time.

I find that when a man starts in the morning to grub bunkers he does the first few well, but as the day goes on, the work being so laborious, the last few bunkers are not done so well. The result is that before long the whole operation has to start again.

I would like to pass on a tip which saves both time and our backs.

Machines are doing more and more jobs on the course and I can recommend another one called The Rotavator. As you know this machine has been used for years by market gardeners and horticulturists.

There are several types but the one I prefer has its rotavating tines on an extended arm at the front. This type is called the Versatiller Mk. IV. When in use one can grub a bunker in a matter of minutes, and the extended arm enables the operator to do the banks of the bunker with ease. The machine is small and light and can be pulled from bunker to bunker as easily as a caddy car.

If the operation is properly organised two men can comfortably grub and level off with a rake all the bunkers on an 18-hole course in two days. Those who are plagued with weeds in their bunkers will find that regular use of this machine will keep them at bay.

The saving of time and labour makes the Versatiller a good investment for any club.

It can also be put to a few other uses on the course. When relaying a green it can be used to break up the soil below the turf instead of digging by hand and when riddling compost it can be used to break up the compost like a compost-shredder.

SITUATIONS VACANT

ASSISTANT HEAD GREENKEEPER. Applications are invited for the above position. Age preferred 25/30. Living accommodation available on Club premises. The successful applicant must be able to furnish two satisfactory references as to health and ability. Apply in writing, stating salary required, to The Secretary, Ifield Golf and Country Club, Crawley, Sussex.

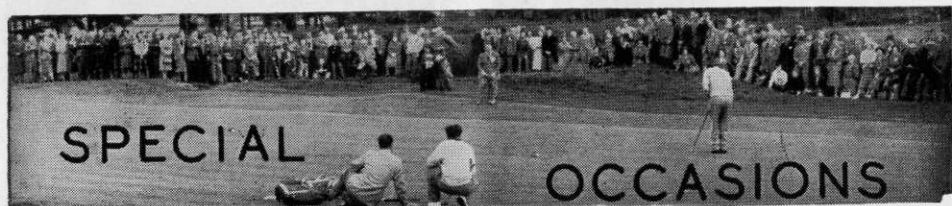
ASSISTANT GREENKEEPER required at Purley Downs Golf Club, 106 Purley Downs Road, Purley. £15-£17 per week, according to experience. Apply: G. Watt, Head Greenkeeper. Tel. 01-756 8347.

HEAD GREENKEEPER REQUIRED. Experienced in all aspects of course work and machinery. Salary up to £1,000 per annum. Apply to: The Secretary, Lytham Green Drive Golf Club, Ltd., Ballam Road, Lytham St Annes, Lancs.

GREENKEEPER REQUIRED FOR Harpenden Common Golf Club. Good wages in accordance with experience. Accommodation provided for first-class man. Apply to Secretary. Telephone: Harpenden 2856.

FOR HIRE

AVAILABLE FOR HIRE, WITH or without operator, Ryan turf cutters, Ryan Ren-O-Thin rotorakes, Ryan Greensaire aerators, Sisis heavy-duty spikers, Howard rotavators, excavating and drainage machinery. Coswells, Agricultural and Sportsground Contractors, Crosston Road, Farington, Leyland, Lancs. Telephone: Leyland 21243.



MAY	2nd	North-West Section Spring Tournament and A.G.M.
	7th	Northern Section Spring Tournament.
	8th	East Midland Spring Tournament.
	15th	Southern Section Spring Tournament.
JUNE	5th	Southern Section A.G.M.
	20th	Midland Section Annual Match.
JULY	2nd	Welsh Section A.G.M.
AUGUST	12th	} B.G.G.A. Annual Tournament—Seacroft Golf Club, Skegness.
	13th	
	14th	
SEPTEMBER	18th	Welsh Section Autumn Tournament.

High-performance power

Like Mr Paul (Head Greenkeeper at Belfast's Belvoir Park Golf Club) you should get Versatiller's easy-to-control power working for you. From sand-grubbing to constant-depth digging for awkward borders or large areas — Versatiller cuts time and trouble in half! With dirt-protected engine, recoil starter, remote throttle and stop plus adjustable handles — let Versatiller chop your handicaps!

Send for literature and your dealer's name!

With a willing 4-stroke and 120 c.c.'s raring to get to grips with forwards or backwards digging.

Digs borders easily!

Powers flexi-drive, has 12" manoeuvrable wheels, comfy handles and 11" slasher bladed rotor.

Dig the Versatiller!

Farmfitters

Farmfitters Ltd, Tatling End, Gerrards Cross, Bucks.
Tel: Gerrards Cross 82053/4

EDITOR MOWING—

My moss is now ready for a top over and I have been down to the stable to see my old favourites.

There is a piece out of the cover of the Flymo and I doubt whether the engine will do for another season. Rotary mowers have to rev so hard. I shall go on to the professional model because this machine is still ideal for sliding under shrubs, and cleaning up round paving stones sunk in the lawn.

The Victa Consul 2 will certainly do another year. I like the air-intake up on the handle out of dust's way, and the

general air of sound engineering. In Australia, where it comes from, most ironmongers have spare parts for it in plastic bags hanging on a display stand. I expect to get two seasons at least before I have to think about an overhaul and I ask and get a lot from it.

The Toro "21" Greensmaster is rather noisy for the garden though the visible oil reserve and plug for washing out the grass hood with the hose are useful for the amateur. Getting rid of the cut grass is the important thing for rotaries.

The Ransomes Antelope gives my moss about as good a "polish" as I am ever likely to need, cuts short or longish, wet or dry, and the blades on its cylinder never seem to mind the odd stone. I also prefer it for mowing fir cones because it stops turning. The rotaries whang them out in all directions and can be painful.

Incidentally do not study the sort of rotary mowing advertising which shows a young lady in sandals operating the machine with a delicate touch. She should be wearing boots with steel toe-caps if she values her toes more than her appearance.

Another season of piling back the cuttings, shaving, and similar abuses should reduce the grass to the stage where I can master it with an occasional snip with the scissors. Until then, grease up, fill up, wind up and let's hope the boys will be home for the week-ends to do the job for me.



FOR HIRE

SISIS AUTOTURFMAN Aerator for hire, £25 per week — Do it yourself. J. B. Burnell, 2 Clarence Road, Eaglescliffe, Stockton on Tees.



Get behind a
VICTA

TOMORROW'S POWER MOWER

Victa Consul 2

This versatile model is powered by a simple 2-stroke 125 c.c. engine, developing an operational performance of 4,000 r.p.m. This is an ideal mower for all types of grass—long or short, rough or sloped. Victa's easy mowing features include impulse starting, instant height adjustment, folding handle and a full 18" cut to save you time and effort.

Over 1 million Victa mowers in use throughout the world

There's a mower for you in the Victa range:—the Corvette 2—Corvette 4—Consul 2—Self-Propelled '160', or the new Victa Consul Professional.

Prices from £46 12s. 6d.—£68 0s. 0d.

For a free colour brochure and information, write to: Victa (UK) Ltd., Victa House, North Pallant, Chichester, Sussex. Tel: Chichester 86231

Name.....Address.....

Town.....County..... GGM

TORO^{Regd.} by Flymo



Highest work rate-

Whatever your mowing problem, we have the machine for the job. Here are three from the comprehensive range—machines built by professionals for professionals.



NEW heavy duty FLYMO 19" Professional—floats on a cushion of air.

Does a big cutting job with little effort. Cuts long grass or short—wet or dry—on slopes, level ground, or in the most awkward corners.

The Flymo Professional has powerful new 4 h.p. engine with double-pulley action for easy start.

New, stronger ABS (Cycolac) hood.

New anti-dust barriers to the electrics and the engine.

New nylon-filled fibreglass impeller.



TORO 21" Greensmaster — for the perfect finish

Specially designed for golf or bowling greens, tennis courts—and all places where absolute perfection of finish is needed. 147 cuts per yard. Unique floating action isolates the cutting unit from the traction and catcher sections, eliminating gouging and digging. Perfect grass collection—even in the wettest conditions. Powered by a 3 hp, 4-stroke Tecumseh engine.

Send today for full details of the Flymo range to: