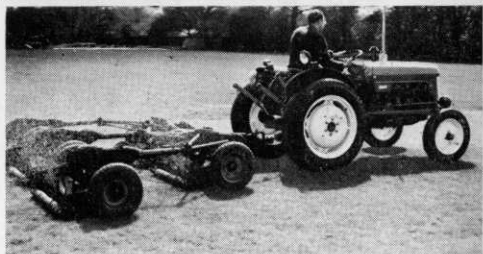


**a lightweight  
tractor, versatile  
yet inexpensive**



# BMC MINI TRACTOR

Scaled down in every way except in the capacity to handle hard work the BMC Mini Tractor is exceptionally versatile. Its light weight is a particular advantage in every phase of turf cultivation. Powered by a BMC 4-cylinder diesel engine and available with hydraulics and power take-off the BMC Mini can be applied also to loading levelling, grading, and a variety of work requiring mechanical, hydraulic or pneumatic power. Ask your BMC/Nuffield dealer to arrange a working demonstration with the BMC Mini Tractor.

H.P.U. Model £585. Standard Model £512. 10. 0.

Petrol-engined models are now available  
H.P.U. Model £567. 10. Standard Model £495

THE **BRITISH** MOTOR CORPORATION LIMITED

(Agricultural Sales Division), LONGBRIDGE, BIRMINGHAM.

Overseas Business: BMC Export Sales Ltd.,  
Birmingham and 41-46 Piccadilly, London W.1

**Backed by BMC Service**



**Express, Expert, Everywhere**