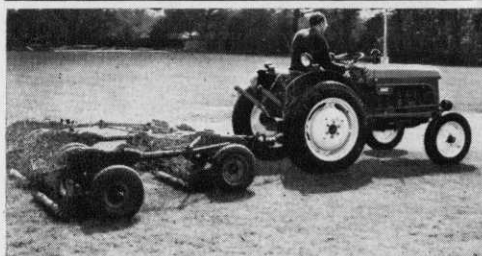


**a lightweight
tractor, versatile
yet inexpensive**



BMC MINI TRACTOR

Scaled down in every way except in the capacity to handle hard work the BMC Mini Tractor is exceptionally versatile. Its light weight is a particular advantage in every phase of turf cultivation. Powered by a BMC 4-cylinder diesel engine and available with hydraulics and power take-off the BMC Mini can be applied also to loading levelling, grading, and a variety of work requiring mechanical, hydraulic or pneumatic power. Ask your BMC/Nuffield dealer to arrange a working demonstration with the BMC Mini Tractor.

H.P.U. Model £585. Standard Model £512. 10.0.

THE **BRITISH** MOTOR CORPORATION LIMITED
(Agricultural Sales Division), LONGBRIDGE, BIRMINGHAM.
Overseas Business: BMC Export Sales Ltd.,
Birmingham and 41-46 Piccadilly, London W.1

Backed by BMC Service



Express, Expert, Everywhere