



ESTABLISHED Tradition

is important to our highly skilled team of maintenance and service engineers.

Immediate delivery of spare parts—from the largest stock of spares in the trade.

An immediate service exchange assembly (engines, cutting cylinders, magnetos, etc.). Reliable maintenance service to keep your equipment in top working order.

Our Service Engineers and Demonstrators are available at any time. H.P. facilities available.

**NEW EQUIPMENT
ALWAYS IN STOCK**

Distributors and Authorised Repair Agents to Ransomes, Sims and Jefferies. Official London Area Distributors for

Ransomes
Specialist Machines

Main Agents and Distributors for Clinton and Briggs & Stratton Engines
Officially Appointed Service Depot, for

Villiers & JAP

Industrial and Agricultural Engines



HONDA AGENTS

RELF AND KENDALL

406 BRIGHTON ROAD, SOUTH CROYDON, SURREY. CRO 0578
11 STATION ROAD, NEW BARNET. BARNET 8228

Member of the British Golf Greenkeepers' Association



Member of the National Association of Groundsmen

Contractors to: Municipal Authorities, Sports Clubs, Golf Clubs, Reconditioning and Maintenance of all grass cutting equipment

THE BRITISH GOLF

GREENKEEPER

HON. EDITOR: F. W. HAWTREE



FOUNDED 1912

PUBLISHED MONTHLY FOR THE
BENEFIT OF GREENKEEPERS,
GREENKEEPING AND THE GAME
OF GOLF BY THE BRITISH GOLF
GREENKEEPERS ASSOCIATION

President:

CARL BRETHERTON

Vice-Presidents:

SIR WILLIAM CARR
R. B. DAWSON, O.B.E., M.S.C.
F.L.S.
GORDON WRIGHT
F. W. HAWTREE
S. NORGATE
I. G. NICHOLLS
F. V. SOUTHGATE
P. HAZELL
W. KINSEY

Chairman:

F. CASHMORE
76 Fourroaks Common Road
Sutton Coldfield, Warwick

Vice-Chairman:

C. A. MOORE

Hon. Secretary & Treasurer:

C. H. DIX
Addington Court G.C.
Featherbed Lane
Addington, Croydon, Surrey

Executive Committee:

Carl Bretherton (President)
G. Herrington, C. Campion
E. H. Benbow, S. T. McNeice,
J. Parker, J. Simpson,
A. A. Cockfield, H. M. Walsh,
E. W. Folkes, D. G. Lord

Hon. Auditors:

MESSRS. SMALLFIELD RAWLINS AND
Co., Candlewick House, 116/126
Cannon Street, London, E.C.4

Hon. Solicitor:

R. A. BECK
21 Lime Street, London, E.C.3

The Association is affiliated to the
English and Welsh Golf Unions.

No. 267 New Series

JUNE 1967

GOLF LESSON

*I decided to take a golf lesson
So I could lower my score,
But all I learned from the lesson
Is that I need a dozen more.*

—MALOU OSTIEN.

JUNE

CONTENTS

Page	3	TEE SHOTS
	6	SITING THE HOLE
	7	CORRESPONDENCE
	8	SPECIAL OCCASIONS
	8	SITUATIONS VACANT
	10	A.G.M. OF S.T.R.I.
	13	HON. SECRETARY'S NOTES
	14	NEWS FROM SECTIONS
	16	MRS GREENKEEPER

EDITORIAL AND ADVERTISEMENT OFFICES: Addington Court Golf Club, Featherbed Lane, Addington, Croydon, Surrey. Telephone: SANDerstead 0281. SUBSCRIPTION RATE: 14/- for 12 issues post paid. Published during the first week of each month. LATEST COPY DATE: 8th of month prior to insertion. All rights reserved. Reproduction of original articles and photographs in whole or in part is prohibited. This Magazine shall not, without the written consent of the publishers first given, be re-sold, lent, hired out, or otherwise disposed of. Contributions and photographs of interest are invited.

TO INSERT A CLASSIFIED ADVERTISEMENT, write to the Advertisement Manager at the above address. The rate is 6d. per word (minimum 15 words). Remittance must be sent with order. Please state number of insertions required and write advertisement in block letters. Advertisements will be inserted in the first available issue.



By appointment to
Her Majesty the Queen
Motor Mower Manufacturers
Charles H. Pugh Ltd.,

For Superfine Mowing... the

ATCO 20" 'Special'



Acknowledged as the supreme machine for Golf greens and other fine turf areas by specialists at home and overseas, the ATCO 20" Special represents the finest investment that can be made for the care and maintenance of greens.

Here are a few features from the outstanding specification of this superb machine:

12 BLADED CUTTER gives smooth close finish.

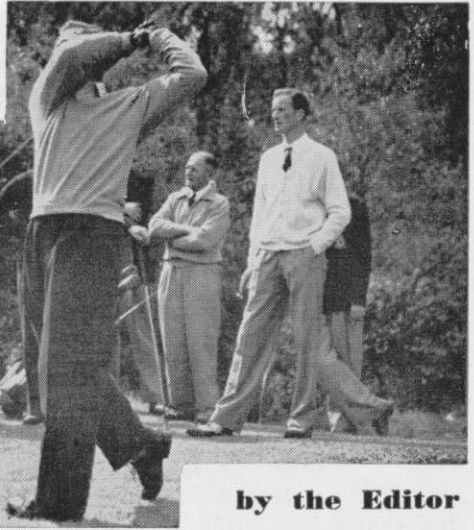
POWERED TRANSPORTING CARRIER for rapid movement from green to green.

FULL WIDTH DIVIDED ROLLER for manoeuvrability and high output.

Remember ATCO supremacy is based on service. A unique nationwide network of ATCO Service Branches is on hand with advice on all your grass-cutting problems.

For a demonstration on your own turf or for an informative folder giving full specification, write to:
CHARLES H. PUGH LTD., P.O. Box 256, ATCO WORKS, TILTON ROAD, BIRMINGHAM 9.

TEE SHOTS



by the Editor

The Barnet Western Area Road Safety Committee has been discussing the Mill Hill Golf Club's mowing problems. The Barnet by-pass, many years ago, separated the clubhouse from the course and this is now a dual carriageway as the A.1, with a gap between the clubhouse entrance and the course. There is an underpass but the mower cannot get through to mow the lawns on the clubhouse side and the Safety Committee want to close the gap. One councillor suggested a movable barrier which could be used only to get the lawn mower across the road at restricted times. Another said, "If we are to move the Ministry of Transport we must move the lawn mower". The answer seems to be two mowers, one on either side, and we must wait and see who buys the second one.

* * *

Mrs R. Watson of High Street, Dunfermline, has come up with a splendid idea for easing congestion at golf courses and even eliminating the disproportionate cost of the clubhouse. Basing her argument on the fact that golfers now all have motor cars with boot compartments to hold their gear and that there is much time wasted when four players drive off one at a time, she suggests "Starting stalls should be at each tee, and all players could then start at once".

* * *

A Steering Committee has been formed to bring back the old Leominster Golf Club at Ford Bridge into operation. The course was reopened after a

TEE SHOTS—contd.

break during the war but post-war austerity and other problems caused it to close again. Now the committee is appealing for 50 subscribers at £2 a head. There should be no shortage at this price.

* * *

School children in the Warley area of Birmingham will have an opportunity of learning golf as part of their education. The Education Committee is inviting secondary schools to send children to have one hour lessons under the professional at the Oldbury Municipal Golf Course.

* * *

Chelsea relaxed with a round of golf at West Hove before their cup final but nearly lost inside-left Bobby Tambling when a sliced shot from team mate John Hollins skimmed past within one inch of his head. Tambling decided that his reflexes were OK and asked Hollins, "Who are you playing for anyway, Spurs?"

* * *

Members of the Flackwell Heath Golf Club of its Artisan section and of the Artisan Golfers' Association joined in honouring the memory of the late W. J. Gardner, M.B.E., with a Memorial Plaque erected within the clubhouse at Flackwell Heath, Bucks.

A commemorative ceremony and unveiling of the memorial by Sir William Carr, President of the Artisan Golfers' Association, took place on Sunday, 30th April.

Mr W. F. Cropley, President of the Flackwell Heath Golf Course, Mr Jim Wilkes, and Mr Bill Farley all spoke of the work which "Bill" Gardner had done for Artisan golf. Several members of his family were present and Mr Tom Scott of *Golf Illustrated* was amongst the many others who attended.

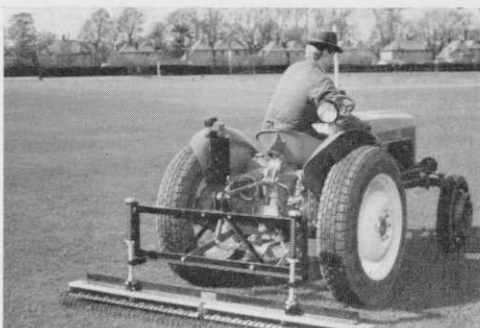
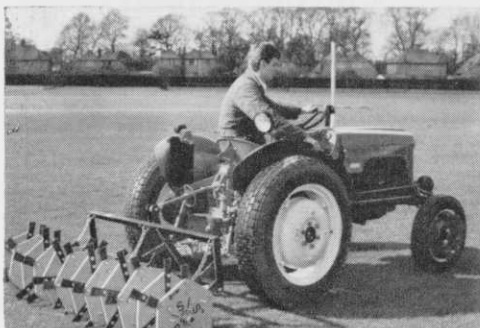
**everything
for the Golf
Course**

*Turf cutting machines. Flagstaffs
and Flags. Hose reels. Tee Mats.
Mud brushes. Drag brushes. Sprinklers.
Gang rollers. Harrows. Line Markers.
Tools. Machines of all types for
everything concerned with Golf courses.*

Send for catalogue.

PATTISSON

H. PATTISSON & CO. LTD. STANMORE MIDDLESEX
Telephone: 01-954 4171



a new lightweight tractor, versatile yet inexpensive



BMC MINI TRACTOR

Scaled down in every way except in the capacity to handle hard work the BMC Mini Tractor is exceptionally versatile. Its light weight is a particular advantage in every phase of turf cultivation. Powered by a BMC 4-cylinder diesel engine and available with hydraulics and power take-off the BMC Mini can be applied also to loading, levelling, grading, and a variety of work requiring mechanical, hydraulic or pneumatic power. Ask your BMC/Nuffield dealer to arrange a working demonstration with the BMC Mini Tractor.

H.P.U. Model £585. Standard Model £512. 10.0.

THE **BRITISH** MOTOR CORPORATION LIMITED
(Agricultural Sales Division), LONGBRIDGE, BIRMINGHAM.
Overseas Business: BMC Export Sales Ltd.,
Birmingham and 41-46 Piccadilly, London W.1

Backed by BMC Service



Express, Expert, Everywhere

SITING THE HOLE

By J. K. CAMPBELL

Links Supervisor, St Andrews, Scotland

MANY golf courses, as a rule, have an area on each of their greens where the hole is usually placed whenever the Club has a golf competition. These positions are chosen because they make the holes interesting by bringing into play any bunkers or other hazards, natural or artificial, surrounding the green.

Moving the holes to the medal positions on the morning of the competition is generally left to the discretion of the greenkeeper, who has to take into account the condition of the turf—worn patches on the green or any unusual accumulation of casual water which would necessitate the hole being placed elsewhere. But under ordinary circumstances the normal spots would be used. In this connection it is helpful if the greenkeeper is a golfer, or at least has a reasonable understanding of the game.

Having such vast and undulating greens on the Old Course here at St Andrews, it is important to have a method of finding the traditional positions for the medal holes and detailed instructions are given to assist the greenkeeper to locate these places.

Bearings

Wherever possible crossbearing on natural objects have been given and the intersection of these lines give the centre of a circle some two yards in diameter within which the medal hole is located. These have been supplemented by measurements from fixed points on or near the green (hydrants, edges of bunkers, etc.).

For example, the following directions are given for locating the position of the 11th hole—at the intersection of the following bearings:—

- (a) Town church steeple to Dundee Law.
- (b) Shelter on the Eden Course near eighth tee to centre of small bunker at back of seventh green.

The hole to be at least 25 feet from nearest edge of Strath bunker.

The experienced greenkeeper who regularly cuts the holes tries to preserve the medal positions for these special occasions by moving them frequently over as wide an area of the putting surface as possible, which will help to spread the wear and tear and add a wide variety of interest for the every-day golfer.

Looking ahead

For important golf events such as the British Open Championship, which lasts for several days, the pin positions on all the greens for each day are carefully considered before the event takes place, and during the course of the Championship the holes are cut as prearranged within the area of the traditional medal positions.

It has become the practice to paint the inside of the hole cups white to make them stand out better and catch the player's eye while putting. Most of the important golf tournaments are now televised and it is also an aid to the cameraman mounted high on his tower; the hole is more easily picked out by the zoom lense of the camera and allows T.V. viewers to follow the game more closely.

Rational siting

Not all courses are of championship standard and neither are all golfers. This is all the more reason why the vast majority of greenkeepers should interest their conveners in the siting of the holes for medal occasions. It is worth while to decide the two-yard area within which each hole will be placed, taking into account the hazards of the approach and providing the opportunity for the average player to get down in a couple of putts. Siting of holes in impossible positions should be discounted.

CORRESPONDENCE

76 Four Oaks Common Road,
Sutton Coldfield.

Dear Mr Editor,

At our committee meeting last night the members were very grieved at the report that our President's wife had passed away.

Everyone who met Mrs Bretherton was impressed with her kindness, charm and understanding, and we in the Midland Section know how wholeheartedly she supported our President in the work he did for us. We shall miss her company very much.

George Hart, Harry Drewitt, with myself and my wife, were at the funeral service, and there were between 80 and 90 more in the church, to pay their last respects to a great lady. The vicar, in

his address, paid tribute to her many qualities, and his words of comfort to the bereaved made a great impression on me.

Amongst the congregation was a contingent of the W.V.S., which reminded me of another of the voluntary jobs Mrs Bretherton did. She drove one of the heavy vehicles in the emergency food convoys when we were on Civil Defence exercises just after the war. They were there to provide us with a meal.

I am sure everyone in the association will wish our President the strength to bear his great loss, and that we shall continue to have his interest and guidance for many years.

Yours sincerely,

F. CASHMORE.

Get on to GIBBS

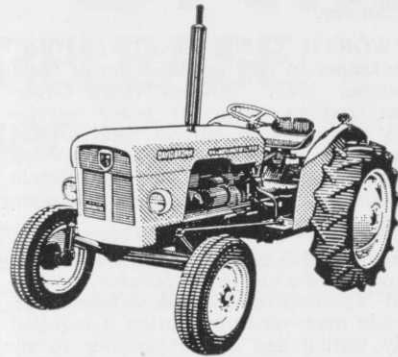
FOR THE

DAVID BROWN 770

12-Speed SELECTAMATIC!

Perfect for gang mowing

Sparkling new colours (orchid white, poppy red and chocolate brown); up-to-the-minute styling; increased power; golf course tyres; PLUS SELECTAMATIC—the revolutionary simplest-ever hydraulic control system



SWITCH TO THE 36 bhp 770

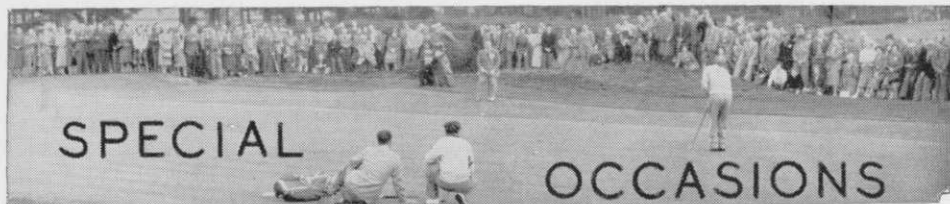
Years ahead in looks and performance

J. GIBBS LTD · BEDFONT · MIDDLESEX

Telephone: Feltham 5071



By appointment to
Her Majesty Queen Elizabeth II
Suppliers of Agricultural
Machinery and Implements,
and Motor Vehicles



JUNE	13th	Midland Visit to Sutton & Sons.
	14th	Southern A.G.M. — Stirling Castle.
	20th	Welsh A.G.M. — Royal Porthcawl G.C.
	22nd	Midland President's Match — Handsworth G.C.
JULY	3rd	Midland Summer Cup and A.G.M. — Habberley G.C.
AUGUST	7th, 8th, 9th	Annual Tournament — Walton Heath.
	27th	Northern President's Match — Filey G.C.
SEPTEMBER	14th	Southern Autumn Tournament—Langley Park G.C.
	21st	Northern Match with Sheffield — Otley G.C.
	22nd	Midland Annual Dinner — Merry Vale Hotel, Langley Green.
OCTOBER	26th	Northern Autumn Tournament — Alwoodley G.C.

SITUATIONS VACANT

FARNHAM GOLF CLUB WILL SHORTLY require Head Greenkeeper. Accommodation provided. Write, stating experience, to Secretary, Farnham Golf Club, Sands, Farnham, Surrey.

WENTWORTH CLUB REQUIRE HEAD Greenkeeper to take up duties on or about September 1967. Present Head Greenkeeper retiring after 40 years' service. Salary according to current rates and by agreement. Accommodation provided. Apply Air Commodore F. A. Pearce, Secretary, Wentworth Club, Virginia Water, Surrey.

HEAD GREENKEEPER REQUIRED TO commence duties in September—experienced assistant considered. Top salary for right man—accommodation if required. Apply stating age and experience to the Secretary, Cotswold Hills Golf Club, Cleeve Hill, Cheltenham.

MISCELLANEOUS

PROFESSIONALS AND GREEN-KEEPERS having stocks of used golf balls contact Sparbrook Golf Ball Co., 295 Highgate Road, Stoney Lane, Birmingham, with a view to filling export orders.



**FIBREGLASS FLAGSTAFFS
GRASS COMBS
GOLF FLAGS
AND SWITCHES**

NEW TURF SWITCH 'St Andrew'

*Metal Shaft, Fibre Glass Tip,
Length Adjustable
£4 15s. each*

STEWART & CO.,
SEEDSMEN LTD.
EDINBURGH, 2



NITROFORM

CONTROLLED RELEASE

Nitrogen Fertiliser

NITROFORM is an organic turf fertiliser containing 38% nitrogen.

- Does not scorch
- Is labour saving—only one application needed a year
- Has no smell
- Releases nitrogen—the vital plant food for grass throughout the growing season
- Easy to spread by hand or distributor

One application feeds the grass for a whole year, giving a healthy sward of a rich, deep, green colour and a strong root system.

Also available in compound fertilisers.

Ask for NITROFORM at your usual supplier of fertilisers. In case of difficulty write to:
AGRICULTURAL CHEMICALS DEPARTMENT



HERCULES

HERCULES POWDER COMPANY LIMITED

ONE GREAT CUMBERLAND PLACE, LONDON, W.1. Telephone AMBassador 7766


THE SPORTS TURF RESEARCH INSTITUTE

The sixteenth Annual General Meeting of the Sports Turf Research Institute was held at Bingley on Monday, 1st May, under the chairmanship of Mr Alan Sowden.

- (1) In the annual report for 1966 reference was made to:—
 - (a) *Research*—New trials on gradual release nitrogen fertiliser were commenced and there was some new work on fungal diseases and grass varieties. Mr Victor A. Gibeault, of the University of Rhode Island, U.S.A., who had been awarded the Fison's Research Fellowship, completed some outstanding new work on annual meadow grass control and his paper published in the Journal is of considerable importance. Other trials of various kinds were continued.
 - (b) *Advisory Work*—Visits were up in number by almost 5 per cent on the previous year and new playing field projects figured prominently despite Government restrictions on capital expenditure. Once again, most European countries were visited this side of the Iron Curtain.
 - (c) *Finance*—Expenditure rose in excess of income resulting in a deficit. The Institute's position is nevertheless financially sound.
 - (d) *General Standing*—The Institute's status as the national centre for turf research, advice and education has never been higher. Increasing reference was made to it by Government Departments and Ministries.
- (2) Message of loyal greetings sent to Patron, H.R.H. The Duke of Edinburgh.
- (3) Election of Officers: President, The Duke of Norfolk; Vice-Presidents, Mr Carl Bretherton, Sir William Worsley, Mr R. B. Dawson; Chairman, Mr Alan Sowden; Vice-Chairman, Mr Carl Bretherton.

PARKERS

**For a
Complete
Service**



* 'Mersil' and 'Murfusan' — the leading turf fungicides


* 'Supertox' 30, 'Dicotox' Extra and 'Clovotox' — selective weedkillers for a variety of problems

* New — 'Iotox' — controls speed-wells in turf

T. PARKER & SONS
(Turf Management) LTD.

For May & Baker
Turf Products

Worcester Park, Surrey
(Tel: DERwent 7791. 01-337 0861. 10 Lines)



SPORTICULTURISTS

Main Distributors