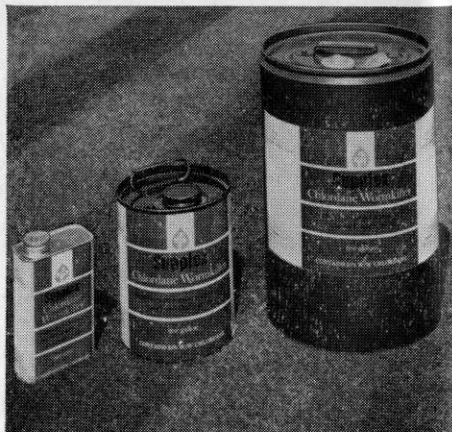


# groundsmen & greenkeepers

## Wormkiller



**Berk 25% Chlordane Wormkiller**  
Suplex Chlordane kills worms *underground* and kills leatherjackets, ants and chafer grubs. It is cheap and easy to apply – calling for very little watering and minimum labour. Best applied in warm, showery weather during autumn or spring when worms are most active and near the surface

**Berk 20% Chloride Wormkiller (Granular)**  
Applied at 80 lb. per acre, this form of Chlordane is particularly useful where grass is kept long or the sward is thick.

## Fertilizers

**Green Gold 'Lawn Feed'**  
A special lightweight fertilizer with high nitrogen content providing an immediate balanced feed, with prolonged nitrogen release, which encourages growth throughout the growing season. One 10 lb. bag is the equivalent of a 56 lb. bag of conventional fertilizer. Rate of application – only  $\frac{3}{4}$  oz. per square yard.

**Green Gold 'Weed and Feed'**  
This is a lightweight fertilizer incorporating a powerful weedkiller – the ideal fertilizer for weed-infested turf. Rate of application – only  $\frac{3}{4}$  oz. per square yard. Both 'Lawn Feed' and 'Weed and Feed' can be applied using a standard distributor.

**'Thrive'**  
A balanced organic fertilizer with the essential trace elements, in pellet form. Ideal for ornamental borders. Applied as base dressing at 4 oz. per square yard and as top dressing at 2 oz. per square yard.

**POST THIS COUPON NOW FOR LEAFLETS AND PRICES**

**F. W. Berk and Co. Ltd, Berk House, 8 Baker Street, London, W.1 Telephone: HUNter 6688**

Please send me literature and prices for the following (tick as appropriate).

Suplex     Tricoflex     Moss Control     Wormkiller     Fertilizer

NAME.....POSITION.....

ADDRESS.....

(B.G.G./M)

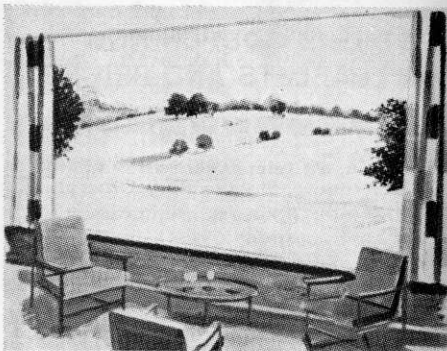
# CHANGES AT BETCHWORTH PARK DORKING

Betchworth Park Golf Club has provided golf for members and visitors for over 50 years. Now it has been decided to build a new Club House. The present Club House, built many years ago, is getting too old and inevitably too small for the 600 plus members of Betchworth Park. Now it is to be retired and a new one built on the existing 17th Fairway. A replacement short hole has already been put in hand. The new green will be playable by the time the club house is finished and the existing 17th Green will be used as the putting green.

This re-siting of the club house will allow players to start from the 1st, 7th and 12th, all a short distance from the club house and have the added advantage of eliminating the long tedious climb on the 17th and 18th at the end of a game. In addition the practice ground will be immediately adjacent to the club house.

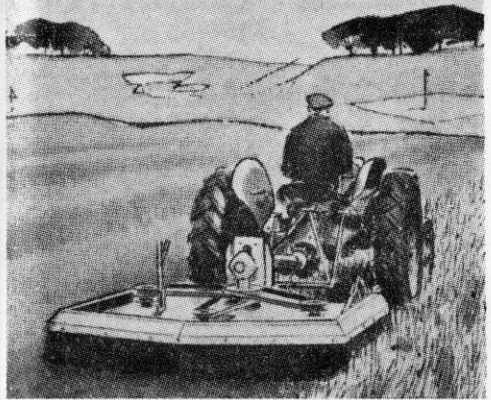
## For the Money Minded

The total cost of the project will be £65,000. Half of this will be subscribed by members of the Club. The balance is being obtained by loan from the ground Landlords.



*An artist's impression of the view from the proposed new Club House at Betchworth Park.*

# Keep the rough under control!



You've seen the anxiety of players searching for lost balls in uncontrolled rough. Time wasted. Time that could otherwise be enjoyed in play. The difficulties in keeping the rough under control are only too well known as are the odd occasions available to top the rough without interfering with play. And then only if the weather permits.

The Hayter 6/14 will give you anytime cutting at a pre-selected height up to 6 inches with easy positive adjustment. It is a rotary mower fitted with special side stone guards and is ideal for controlling the rough on golf courses.

It cannot choke, however wet the grass. Its specially balanced cutter blades revolving at high speed ensure a perfectly level finish. And not a stalk is left standing.

# Hayter



\* For full details and literature, cut out complete advertisement and send with name and address to:-

**HAYTERS (SALES) LIMITED,**  
34, SPELLBROOK LANE,  
BISHOP'S STORTFORD, HERTS.  
Tel.: Sawbridgeworth 3444-5-6

SOONER OR LATER YOU'LL BUY A HAYTER

# News



## from the Sections

### WELSH

*Chairman:*  
M. GEDDES  
(Royal Porthcawl)

*By S. A. Tucker*  
*Hon. Secretary:*  
36 Clase Road  
Morrison  
Swansea, Glam.

#### Spring Meeting

WITH THE KIND PERMISSION OF the Captain and Committee of the Dinas Powis Golf Club we were able to hold our Spring Meeting at their course. We were very lucky with the weather having a good day of sunshine and the course was in excellent condition. Our thanks to the staff for the way they looked after us.

We played a 27 hole aggregate medal in two handicap sections. Scratch to 18 and 19 to 24. D. H. Jones of Llantrisant won the Cardiff Cup and half a tea service with a net 100; 2nd was H. Fry, Jnr., net 107; 3rd D. G. Lord 110½. With the 19-24, 1st was won by G. Phillips, net 105; 2nd W. Lewis, net 118; 3rd W. Hooper, net 123. We had a very good attendance of 26 members.

#### A.G.M.

Our Summer Meeting will be held at the Southerndown Golf Club on 1st June when we will be holding our Annual General Meeting. An 18 hole competition will be played for the John Duncan Cup, Runner Up Cup has been given by the family of the late John O'Gorman. Birdie Cup will be given for the 19-24 handicap. Please come along in good time, if the weather is bad we will hold the A.G.M. in the morning hoping the weather will clear by the afternoon. Entries please, no later than 14th May.

Any member having a proposition or suggestion for the A.G.M. please forward same to me not later than 16th May.

### NORTHERN

*By J. Parker*  
*Hon. Secretary:*  
S. BAILES  
8 Goit Stock Terr., Harden  
Bingley, Yorks.

#### Visit to S.T.R.I.

ARRANGEMENTS HAVE BEEN MADE for the section to visit the Sports Turf Research Institute, Bingley, on Wednesday, 2nd June.

Members attending are asked to assemble outside the offices at 1.45 p.m. The visit will be followed by the Annual General Meeting of the section, details of which will be shown on the balance sheet. Refreshments will be available in the Mansion café.

#### March Lecture

The last lecture of the winter session was held on Monday, 22nd March in the Market Tavern, Bradford. We were pleased to have as the Speaker our Hon. Editor and well-known Golf Course Architect, Mr F. W. Hawtree.

Unfortunately the weather was about the worst of the winter and only twenty-five ventured out. Mr Hawtree took us on a "tour" of Golf Courses in England and on the Continent, illustrating his talk with colour slides. This was followed by questions and discussion and the whole evening was most enjoyable and instructive. A vote of thanks was proposed by Mr S. Bailes and Mr D. Roberts respectively.

#### Subscriptions

Members are reminded that subscriptions for the year 1965-1966 become due on 1st May. Prompt payment would be much appreciated.

### SHEFFIELD

*Chairman:*  
G. HERRINGTON  
(Lindrick)

*By J. J. Dearlove*  
*Hon. Secretary:*  
63 Langsett Avenue  
Sheffield, 6

#### Winter Meeting

OUR LAST MEETING OF THE winter programme at the Brunswick Hotel on Thursday, 25th March, was devoted to a talk on the training of apprentices.

Mr B. M. Wood the Secretary of the Joint Council for Golf Greenkeepers Apprenticeships came along to explain the scheme, which he did very thoroughly indeed.

Unfortunately only five golf clubs were officially represented out of twenty-five invited to attend, hardly good enough considering Mr Wood's journey. The greenkeepers, however, did consider the meeting to be important and gave their usual support to bring the attendance up to about thirty.

A number of interesting points did evolve



from the meeting and high on the list was for the scheme to be given more publicity and for apprentices to be given Diplomas of Qualification on completion of training.

The question of wages was again in prominence, it appears that a more detailed scale should be decided upon at section level now that some guidance has been given by the Executive Committee. I have received a number of requests for details of wages quite recently and can still only refer to the *Report on Wages Survey* in the January issue of this Journal.

## SOUTHERN

By W. Mason

Chairman:  
W. E. MOORE  
(Romford)

Hon Secretary:  
18 Albert Road, Hendon, N.W.4.  
Tel.: SUNnyhill 0245

### Quiz

OUR LAST LECTURE IN THE FORM of a Quiz kept J. K. Glass, our Quiz Master, very busy. All kinds of questions were asked, one rather unusual one being, should tees be constructed to have fall from back to front or vice-versa. After quite a debate the majority were in favour that they should be made as level as possible.

### Dinner

Our Dinner proved quite an enjoyable occasion. We were sorry that owing to illness our old friend C. A. Tydeman could not come along and we all wish him a speedy recovery. Owing to various circumstances Mr Carl Bretherton, the Chairman Mr Sheppard and Mr Moss were unable to attend.

### A.G.M.

Our section Annual General Meeting will be held as usual at the Talbot Restaurant. Please make a note of the date, Wednesday, 9th June. We hope every effort will be made by members to come along.

May I remind you that 1st May is the end of our financial year and it would be a great help to me if you will send along your subscriptions without delay.

## NORTH-EAST

By D. Earsman

Chairman:  
J. SIMPSON  
(Ponteland G.C.)

Hon. Secretary:  
Arcot Hall Cottage  
Dudley  
Newcastle-on-Tyne, 3

### Lecture

A VERY INTERESTING LECTURE on "Turf Diseases" given by Mr Lidgate of S.T.R.I. was held on Thursday, 17th March, at the Carlisle Hotel, Newcastle, in conjunction with the N.A.G. With the aid of slides Mr Lidgate discussed most of



## GOLF COURSE EQUIPMENT

Hole Tins	Tee Boxes
Cutters	Tee Plates
Staffs	Ball Cleaners
Mats	Tablets
Mowers	Rollers
Hose	Sprinklers
Mole Ploughs	Rotary Sifter
Aerating Machines	
and all	
Greenkeeping Tools	

**H. PATTISSON & CO. LTD.**  
STANMORE · MIDDLESEX  
Telephone GRImdsyke 4171/4172

the fungal diseases and afterwards answered many questions put to him.

### Lecture and Film Show

A lecture and film show was held on on 25th March at the Crown Hotel. It was given by Mr Beveridge of Ransomes, Sims & Jefferies who gave us plenty of good information on maintenance and answered the many questions fired at him by members.

Our Chairman, Mr J. Simpson, on behalf of the greenkeepers and groundsmen, thanked Mr Beveridge and said how pleased he was to welcome him to the North East.

### New Appointment

Our best wishes to Mr Thompson on his appointment as Head Greenkeeper at Whitby Golf Club.

## MIDLAND

By F. Cashmore

Chairman:  
G. HART  
(Gay Hill)

Hon. Secretary:  
76 Four Oaks Common Road  
Sutton Coldfield, Warwickshire

### President's Match

THIS ANNUAL EVENT, WHEN OUR President, Mr Carl Bretherton, invites us to Handsworth Golf Club to play against his team chosen from the best of the Midlands Amateur Golfers, will be held on the evening of 22nd June. Most of you are familiar with the arrangements and I hope you will show your appreciation of Mr

Bretherton's efforts on our behalf by turning up in full strength.

I shall be away on holiday from 22nd May until 5th June. Will anyone not able to play please let me know after then.

#### Autumn Tournament

The Bloxwich Golf Club have kindly granted us the courtesy of their course for our Autumn Tournament on Thursday, 16th September. We thank them for their kindness and look forward to our visit.

#### New Members

The following new members will be joining us on 1st May. We give them a cordial invitation to join us in our activities:—  
W. J. Marnock, Head Greenkeeper, Coventry Hearsall Golf Club, P. J. Coleman, Apprentice at Oxley Park Golf Club, and R. J. Erratt, Associate Member, Harborne Golf Club.

## EAST MIDLAND

(Derby G.C.)

Chairman:  
F. FROST

By S. Fretter

Hon. Secretary:  
Portland Lodge Farm  
Portland Road  
Kirby Muxloe, Leicester

#### Annual Spring Tournament

AS ALREADY ANNOUNCED IN THE forthcoming occasions the Spring Tournament will be held on Wednesday, 12th May at the Northamptonshire County Golf Club, Chapel Brampton. This will be an 18 hole Medal Event, commencing at 1 p.m.

As I failed to make this announcement in the April issue of the Journal I have notified members by post. If by any chance you have not received any notice and wish to attend please notify me at once. My club telephone number is Leicester 774121.

#### New Secretary

At the last Annual General Meeting of the section, S. Fretter promised he would take over duties as Honorary Secretary of the section as soon as business commitments allowed him to do so. He has now informed me that he is ready to take over.

All correspondence should now be addressed to S. Fretter, Portland Lodge, Portland Road, Kirby Muxloe, Leicestershire.

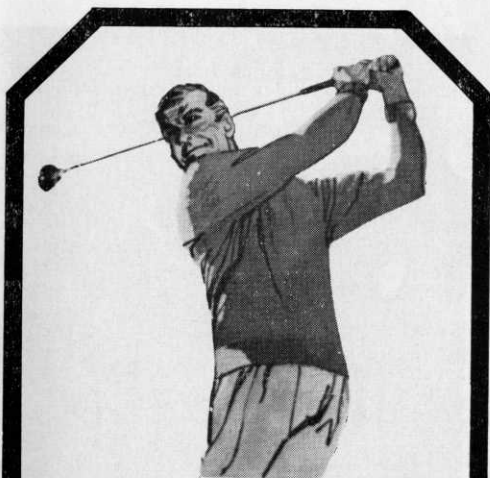
#### Subscriptions

May I remind members that their subscriptions for the year 1965-1966 are now due. Please send them to A. Thornton, 15 Trent Road, Beeston, Notts.

*Adv. for a golf driving range: "Golf instruction. Slide and Swings for Children. Come out and hit a few."*

#### MISCELLANEOUS

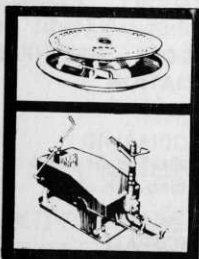
PROFESSIONALS AND GREENKEEPERS having stocks of used golf balls contact Sparkbrook Golf Ball Co., 295 Highgate Road, Stoney Lane, Birmingham, with a view to filling export orders.



## What will he remember most about your course?

Will it be lush greens where his pitches stopped dead and his putts rolled true, and grassy fairways that were good to play from as well as walk on? It could be if you employ the forty years of irrigation experience of B.O.I.L. to keep your course in tip-top condition however dry the season

Post the coupon for details of the self-travelling sprinkler for fairway watering and "Pop-up" sprinklers for your greens.



The "Pop-up" is installed beneath the turf and can be mown over.

The Travelling Sprinkler evenly waters an area of almost an acre per setting.



# B.O.I.L.

## RAIN SYSTEMS

BRITISH OVERHEAD IRRIGATION LTD  
UPPER HALLIFORD-SHEPPERTON-MIDDLESEX-ENGLAND

Please send me details of the B.O.I.L. Pop-up sprinklers and Self-Travelling sprinklers.

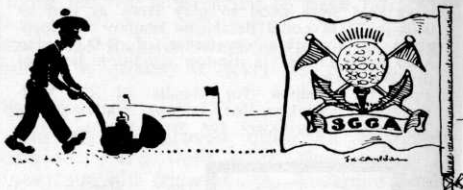
Name.....

Address.....

B.G.G.



*The Ransomes Junior Quintuple Gang Mower pulled by an International Harvester Cub Tractor. This tractor is also useful for pulling golf ball harvesters on Driving Ranges.*



**THE SCOTTISH GOLF GREENKEEPERS ASSOCIATION**

Chairman:

**D. L. MACDIARMID**  
Royal Burgess Golfing Society  
Barnton, Edinburgh, 4

General Secretary:

**R. B. MOFFATT**  
71 Kelton Street, Glasgow, E.2

**Open Draw**

BY THE TIME YOU ARE READING this I hope you have sold the tickets which you have received and are sending to me for a further supply. The committee hope for a good return with all tickets sold.

**Annual Outing**

The outing this year will be held on Wednesday, 16th June, by courtesy of the Luffness New Golf Club. I am looking forward to a large attendance of all old and new members. A bus will be running from Glasgow and it is hoped to fill all seats which will cut the fare and reduce expense.

**North Dance**

I would once again like to thank Mr Milton and his Committee on behalf of all who travelled to Dundee for a very enjoyable night.



EDINBURGH

**FIBREGLASS FLAGSTAFFS**

**GRASS COMBS**

**GOLF FLAGS**

**AND SWITCHES**

**STEWART & CO.,**

SEEDSMEN LTD.

**EDINBURGH, 2**

**S.G.G.A. EAST**

**Mr F. Cameron**

THE ASSOCIATION REGRET THE sudden death of Mr F. Cameron, Head Greenkeeper at Baberton Golf Club.

## **BELOS GRAVELY Ltd.**

### **introduce new light tractors**

---

A new firm, recently established with headquarters at Seghill in Northumberland, promises to become prominent in tractor distribution throughout the country.

The firm is Belos Gravelly Limited, formed to take over distribution in Britain of Gravelly Tractors, a division of the Studebaker Corporation of America, as well as equipment designed by Belos of Sweden.

The vehicles for distribution are two and four wheeled light tractors with an extensive range of matched implements for grass cutting, cultivating, spraying, industrial haulage, snow ploughing, snow blowing, power brushing and other functions.

#### **Plans**

While at first activities will be limited to marketing, distribution and servicing, future plans include the manufacture of Belos equipment in Northumberland which promises to be a valuable boost to the area's unemployment problem.

The Belos system is of special interest to local authorities and parks committees, offering more than 30 attachments which give the tractors an all-round-the-year versatility.

Here are a few technical facts: Engine: one cylinder, four cycle, T-head type removable head. Air cooled by engine driven fan. Carburetor manufactured by Zenith. Custom built with two forward and two reverse gears. "Swiftomatic" gears available with four forward and four reverse. Two double-acting cone-type clutches, one as speed selector, one for forward and reverse. All power attachments indi-

vidually protected from shock by safety clutch. Height 28 inches (exclusively adjustable handles). Width 24 inches. Length 55 inches. Any technical problems can be expertly dealt with by Mr. D. Turner, Service Manager, at Seghill.

The four wheel Westchester tractor has a one-cylinder air cooled four cycle, overhead valves. Carter carburetor with one inch side draft. The engine is rated at 12 h.p. at 3,400 r.p.m. Overall length 74 $\frac{3}{4}$  inches. Width 32 inches. Height over steering wheel 37 $\frac{5}{8}$  inches. The body is manufactured from fibreglass-reinforced plastic.

---

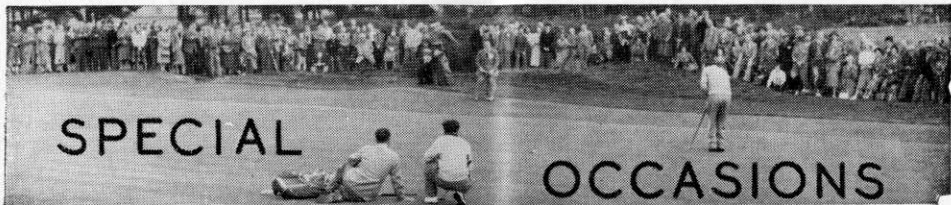
### **SITUATIONS VACANT**

**BROCTON HALL GOLF CLUB,** require experienced Greenkeeper, capable of managing groundstaff. Apply to Secretary, Brocton, Stafford, giving full particulars.

**FIRST ASSISTANT GREENKEEPER** required. Average earnings about £750 a year plus free house. Send details: experience, family, etc., to G. R. Young, Addington Court Golf Club, Featherbed Lane, Addington, Croydon, Surrey.

**GREENKEEPER FULLY EXPERIENCED** to take charge of ground staff of Golf Club. Salary up to £18 per week according to qualifications. The Halesowen Golf Club, The Leasowes, Halesowen, Nr. Birmingham.





- MAY** 4th North-West Section, Spring Tournament and A.G.M., Wilmslow Golf Club.  
 6th North-East Section, Spring Tournament, Whitburn Golf Club.  
 6th Northern Section, Spring Tournament, Shipley Golf Club.  
 6th] Midland Section, Spring Tournament, Gay Hill Golf Club.  
 11th Southern Section Spring Tournament, Ealing Golf Club.  
 12th East Midland Section, Spring Tournament, Northamptonshire Co. Golf Club.  
 27th S.G.G.A. North and Midland Section, Tournament, Craigie Hill Golf Club.
- JUNE** 1st Welsh Section Summer Meeting and A.G.M., Scuderndown Golf Club.  
 2nd Northern Section visit to S.T.R.I., 1.45 p.m.  
 9th Southern Section A.G.M., Talbot Restaurant.  
 16th] S.G.G.A., Annual Outing, Luffness New Golf Course.  
 22nd] Midland Section, President's Match.
- AUG.** 9-10-11th Annual Tournament, Whitley Bay.
- SEPTEMBER** 14th Northern Section, Annual Match v. Sheffield Section, Scarcroft Golf Club.  
 29th East Midland Section, Autumn Tournament, Birstall Golf Club.

# Get on to GIBBS for Ransomes MOWERS

## PLUS A SPECIALISED SERVICE

The best in every way; prompt supply of new machines, spares and accessories of all kinds; specialist advice on Ransomes mowers; regular maintenance by expert engineers . . .



The Ransomes 'Auto-Certes' Mk7 Motor Mower with attachable power driven Transport Wheels. Cutting width 18". 4-stroke engine. A fine mower giving the best possible finish to Golf and Bowling Greens, Croquet Lawns, Cricket Squares, etc.

Visit the Gibbs Stand at the Chelsea Show. 11 May 26/28



**BEDFONT·MIDDLESEX**  
Phone: Feltham 5071



By Appointment to  
Her Majesty  
Queen Elizabeth II  
Suppliers of  
Agricultural Machinery  
and Implements

**SPECIALIST DISTRIBUTORS AND AUTHORISED REPAIR AGENTS FOR RANSOMES LAWN MOWERS**



## Mrs. Greenkeeper's

### Own Corner

with Ann Mawson

Fish pie makes a nice change and fish is something you can obtain all the year round. This is nice for mid-day lunch or a change for supper.

You require:—1 lb. fish (cod or haddock)—2 small sliced onions—2 skinned and sliced tomatoes— $\frac{1}{2}$  pint potato water—pepper and salt to taste—1 lb. cooked mashed potato. Grease a pie dish and put in a layer of uncooked fish (after the skin and bones have been removed) add a thin layer of sliced onion and then a layer of fish alternately until all has been used, adding a little of the sliced tomato to each layer. Season the potato water

and pour over the fish, etc. Cover with mashed potato. Bake for 45 minutes. Regulo mark 4 or Electricity 375° F. The top should be a nice golden brown. This should serve 3-4 people.

Just a small hint to follow this recipe, When washing dishes that are fishy, put a little mustard in the washing up water, all smell and taste of fish will disappear.

#### Silver Cleaning

Now here is a simple method by which silver can be kept bright and unstained for a much longer period than is possible with the ordinary polishes. After cleaning and polishing in the usual way, moisten a soft cloth with a very little olive oil or a good brand of furniture cream and polish the article with this. Do not use too much of either the oil or the cream or a smeared effect will result and will quite defeat its own end. It will be found that the silver will not tarnish so quickly and the actual cleaning will be much easier, it also helps to preserve the silver and is particularly efficacious with articles kept out in a room for decorative purposes.

Happy polishing, until June . . .



"Now do you understand what I mean when I stress the importance of strong hands and a good grip!"

# S.T.R.I. BOARD MEETS

---

The 14th A.G.M. of The Sports Turf Research Institute was held at Bingley on Monday, 26th April, under the Chairmanship of Mr Alan Sowden.

- (1) In the annual report for 1964, reference was made to:—
  - (a) Extensive grass variety trials laid down with a view to finding better and tougher grasses for sport.
  - (b) Continued trials with urea-formaldehyde fertilisers, fungicides and herbicides.
  - (c) *Advisory visits*—up in number by almost 10 per cent on previous year. Most European countries were visited. Furthest point was Mexico City to advise on the construction of a football pitch in the new Aztec Stadium. It is expected that this will be used during the 1968 Olympic Games.
  - (d) Inauguration of a *Building Fund* to help provide ultimately a solution to the accommodation problem.
  - (e) *Finance*: Income up 16 per cent but expenditure also up 14 per cent. A small surplus resulted, this being in keeping with a non-profit-making organisation. Surplus automatically ploughed back to further the objects.

(2) Message of loyal greetings sent to our Patron, H.R.H. The Duke of Edinburgh.

(3) Elections to office:—

President—His Grace The Duke of Norfolk.

Vice-Presidents—Sir Bracewell Smith, Mr Carl Bretherton,  
Sir William Worsley, Mr R. B. Dawson.

Chairman—Mr Alan Sowden.

Vice-Chairman—Mr Carl Bretherton.