

**BLADES THAT MOW
for BLADES THAT GROW**

Relf and Kendall is the name to remember in the same breath as mowing machines. We'll take care of the blades that mow!

Our stock of new machines meets every mowing problem, head on! We pride ourselves particularly on speedy and efficient after-sales service backed by rapid service of spare parts.

You buy more than mowers from Relf and Kendall—you buy sterling service and years of experience at the same time.

Authorised service repair agents. Sales, Spares and Service.

Industrial and Agricultural Engines. Main agents and distributors to Briggs & Stratton (Engine Manufacturers).

Main agents and distributors for Clinton Engines. Spare parts and service exchange assemblies now available from stock.

Official London Area Distributors to Ransomes, Sims & Jefferies for specialist machines.

Agents for Dennis, Shanks, Greens, Atco, Lloyds and Allen Motor Scythes.

RELF AND KENDALL

406 BRIGHTON ROAD, SOUTH CROYDON, SURREY. CRO 0578

11 STATION ROAD, NEW BARNET. BARNET 8228



THE BRITISH GOLF

GREENKEEPER

HON. EDITOR : F. W. HAWTREE



FOUNDED 1912

PUBLISHED MONTHLY FOR THE
BENEFIT OF GREENKEEPERS,
GREENKEEPING AND THE GAME
OF GOLF BY THE BRITISH GOLF
GREENKEEPERS ASSOCIATION

President:

CARL BRETHERTON

Vice-Presidents:

SIR WILLIAM CARR
R. B. DAWSON, O.B.E., M.S.C.,
F.L.S.
GORDON WRIGHT
F. W. HAWTREE
S. NORGATE
I. G. NICHOLLS
F. V. SOUTHGATE
P. HAZELL
W. KINSEY
R. C. AINSCOW

Chairman:

H. G. SHEPPARD
Weston-Super-Mare G.C.

Vice-Chairman:

J. SIMPSON
Ponteland G.C.

Hon. Secretary & Treasurer:

C. H. DIX
Addington Court G.C.
Featherbed Lane
Addington, Croydon, Surrey

Executive Committee:

Carl Bretherton (President),
G. Herrington, J. G. Bryan,
E. H. Benbow, S. T. McNeice,
J. Parker, J. Simpson,
A. A. Cockfield, V. Crabtree,
E. W. Folkes, D. G. Lord

Hon. Auditors:

Messrs. SMALLFIELD RAWLINS AND
Co., Candlewick House, 116/126
Cannon Street, London, E.C.4

Hon. Solicitor:

R. A. BECK
21 Lime Street, London, E.C.3

The Association is affiliated to the
English and Welsh Golf Unions.

No. 242 New Series

MAY 1965

*I search the rough,
The out-of-bounds,
I even check the bunkers.
The balls I lose
Are spanking new.
The ones I find are clunkers!*

MAY

CONTENTS

Page	3 TEE SHOTS
4	GOLF COURSES AND GREENKEEPING IN THE SOUTH OF FRANCE
12	CHANGES AT BETCH- WORTH PARK, DORKING
13	SECTION NOTES
16	S.G.G.A. NEWS
17	SITUATIONS VACANT
18	SPECIAL OCCASIONS
19	MRS. GREENKEEPER
20	S.T.R.I. BOARD MEETS

EDITORIAL AND ADVERTISEMENT OFFICES: Addington Court Golf Club, Featherbed Lane, Addington, Croydon, Surrey. Telephone: SANDerstead 0281. SUBSCRIPTION RATE: 14/- for 12 issues post paid. Published during the first week of each month. LATEST COPY DATE: 8th of month prior to insertion. All rights reserved. Reproduction of original articles and photographs in whole or in part is prohibited. This Magazine shall not, without the written consent of the Publishers first given, be re-sold, lent, hired out, or otherwise disposed of. *Contributions and photographs of interest are invited.*

TO INSERT A CLASSIFIED ADVERTISEMENT, write to the Advertisement Manager at the above address. The rate is 6d. per word (minimum 15 words). Box Number, 1/6 extra. Remittance must be sent with order. Please state number of insertions required and write advertisement in block letters. Advertisements will be inserted in the first available issue.



ATCO

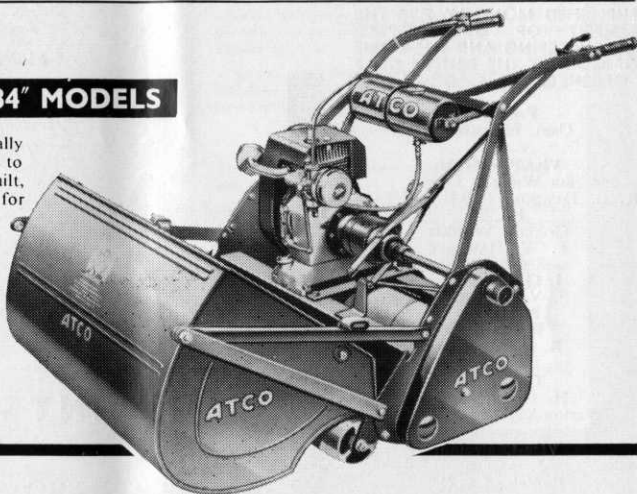
FOR THE GOLF COURSE – *and for Life*

PARTICULARLY

THE 20", 24", 28" & 34" MODELS

These machines are designed specially for those with large areas of grass to mow. They are ruggedly built, efficient and economical—ideal for the high hourage user. Every Golf Course needs at least one of these machines, for mowing the approaches to the Greens and all those areas of grass which need a finer cut than can be obtained with a gang mower

**20" models
from £53**



ATCO's range of equipment for Golf Courses covers every possible requirement from the 12" Roller type right up to the 34" Roller type, and Gang mowers as well. Then, of course, there is a full range of Rotaries and Sidewheels.

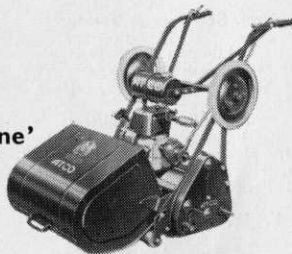
*and perhaps most important
of all* **IMPECCABLE SERVICE**

EVERYWHERE there is an ATCO Engineer attached to an ATCO owned Branch ready to advise on any problem in connection with grass cutting.

* **DEMONSTRATIONS OF ANY ATCO
CAN BE ARRANGED TO SUIT YOU
OR YOUR GREENS COMMITTEE**

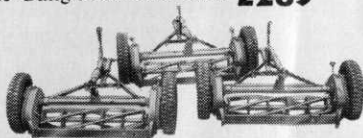
**CHARLES H. PUGH LIMITED
P.O. BOX 256, ATCO WORKS, BIRMINGHAM, 9.**

**The 20"
SPECIAL
MODEL
for 'superfine'
mowing of
greens.
£90**



**ATCO GANG MOWERS
for the FAIRWAYS**

Unique—because individual units can be 'ganged' in multiples of one to seven units. Three models are available. The Triple Gang illustrated costs **£289**



TEE SHOTS



by the Editor

Mr W. J. Gardner, M.B.E., is this year retiring from the position of Hon. Secretary of the Artisan Golfers Association which he has held for over thirty years. Even earlier he was Assistant Hon. Secretary and he has been the hub on which the Association has turned so smoothly since it became the great force in golf which he is now handing over. There are few such records of devotion and unflinching enthusiasm in golf or, indeed, in any other sphere. The many greenkeepers who know him will join in thanking him and looking forward to seeing him at Artisan functions without the same responsibility but with the same ready word for the hundreds of golfers who value his friendship.

* * *

A proposal to build on part of Reading Golf Club has been turned down by Reading's Planning Committee.

The application by Caversham and Oxon Golf Club Ltd. was to use part of the course at the south end fronting Kidmore End Road.

The committee refused on the grounds that the route of the South Wales motorway is not yet settled. One possible route would pass through the northern tip of the borough and might affect the golf course.

* * *

We have learnt with much sorrow of the death of two members of the Southern Section last month. Tom Chamberlain of Highgate Golf Club died in hospital just before Easter and F. C. Neal of Pinner died on Friday, 9th April.

R. C. CRAIG

AND CO. LTD.

SPECIALISTS IN THE REPAIR AND MAINTENANCE OF ALL TYPES OF MOWERS

★ Agents for: RANSOMES, SIMS & JEFFERIES Ltd.

★ LLOYDS & Co. Ltd. WEBBS LAWN MOWERS

★ Distributors: DENNIS BROS Ltd.

★ GANG MOWERS FOR HIRE

We will gladly call on you to advise on your grass cutting equipment or arrange demonstrations. Ring us now.

★

153 Arch Stamford Brook Station, LONDON, W.6.

RIVERSIDE 5415

M. G. FENN

discusses Golf Courses and Greenkeeping in the South of France

ALTHOUGH the French Riviera has become one of Europe's most popular holiday centres, the number of golf courses open for play during the summer is less than during the winter and early spring.

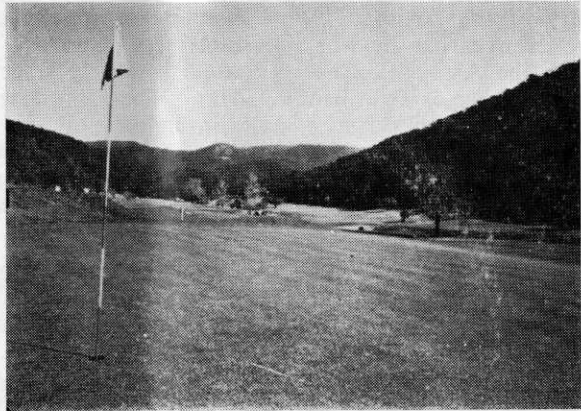
How is it that golf has taken a step back here while elsewhere during the festive and holiday seasons it has made and is making enormous strides? Perhaps a quick glance back into the history of golf on the Riviera will help us to understand the paradox.

these conditions is indeed a difficult one.

The basic causes of these difficulties can be summarised as follows:—

- (a) Lack of water.
- (b) Poorness of soil, lack of suitable soil conditioning, and failure to create a top soil of sufficient depth and quality to retain moisture.
- (c) Lack of suitable grasses capable of withstanding dryness and heat.

*The 18th Green
at Valeros with
the 1st and 6th
beyond.*



During the latter part of the 19th century and for nearly the first 40 years of the 20th century the Riviera enjoyed a busy and fashionable winter season in which golf was one of the popular sports. During the summer little holiday activity was known and the Riviera did not enjoy its present popularity.

From all this it is quite natural to assume that most golf courses on the Côte d'Azur were built entirely for winter and spring purposes and not to resist the fierce heat of long, dry summers. Because of this, some courses have to close down during the summer months whilst others remain open only with difficulty and the problem of maintaining first-class turf under

All these considerations came into question some three years ago when it was decided to construct a golf course of permanent character situated between Hyères and Le Lavandou.

This course, now known as the Golf Club de Valcros, had been beautifully planned and designed by Mr F. W. Hawtree over very difficult country and it had to remain green throughout the year.

Valcros lies in a magnificent valley surrounded by mountains covered with cork oak, pines and many other fine trees. And in this valley there existed in abundance the all important thing, *Water*. The former owners had made a barrage containing 85,000 cubic meters of water, whilst the possibilities

Talk about perfect turf?

Walk about perfect turf!

with

'CLOVOTOX' Selective weedkiller for controlling clovers and other weeds in turf.

'DICOTOX' Showerproof selective weedkiller for economical general weed control in turf.

'DICOTOX' EXTRA Four times as concentrated as 'Dicotox'.

'SUPERTOX' 30 Broad spectrum selective weedkiller for turf. Kills weeds *and* clovers.

'MERSIL' Concentrated turf fungicide with rapid activity. In powder form for application as a suspension in water.

'MERFUSAN' Turf fungicide with similar range of action to that of 'Mersil'. In powder form for dry application.

DDT CONCENTRATE Insecticide for the control of turf pests including leatherjackets.

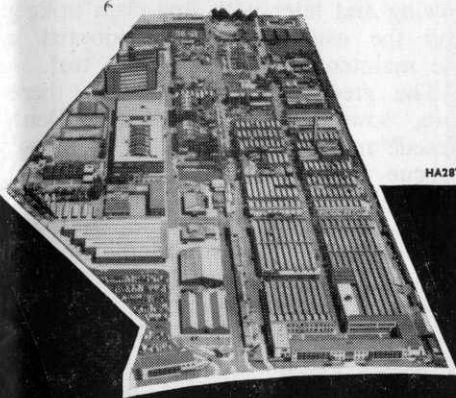
MERCURY BICHLORIDE Controls worms.

Names quoted thus 'Clovotox' are trade marks the property of May & Baker Ltd.

Talk to
MAY & BAKER LTD
DAGENHAM ESSEX
Tel: DOMinion 3060 • Exts. 342 and 359

The people with turf
protection know-how

M&B BRAND PRODUCTS



HA2873

of a second barrage were bright since the swift running mountain streams could fill a barrage of considerably larger dimensions than the first one.

The situation of top soil for the greens and tees was also encouraging, since, in various parts of the Estate, there existed plenty of top soil of quite good quality.

The next question was the type of grass to implant on the course. Local tradition in the South of France tends to the theory that the orthodox grasses sown in the more temperate zones of Europe do not survive the heat and dryness of the Mediterranean summer climate.

On some of the courses, hot-country grasses like *Cynodon*, *Dactylon* and *Kikuyu* grass have been tried out, but on the whole they have not given good results. They die back during the winter months and leave little or no grass for long periods during the winter and spring.

It was, therefore, decided to try out some experimental grass plots composed of varying mixtures of the more resistant species of grasses.

Promising Results!

The results obtained from the trial plots were encouraging. The grasses survived quite well with regular watering and without special treatment, fertilisers, top-dressing or, indeed, soil preparation before sowing.

From these results it appeared possible to create really first-class turf with proper soil preparation before sowing and later with first-class upkeep and the usual procedures adopted in the maintenance of good-class turf.

The greens at Valcros were, therefore, sown with an orthodox Bent/*Fescue* mixture of *Highlight* *Chewing's Fescue* and *American Browntop Bent*. This mixture has thrived well from the beginning and now after the first year the greens give every indication of becoming first class.

The fairways, of course, presented by far the toughest problem because their size precluded the more intensive preparation possible for the smaller

areas of the greens. Nevertheless, these were sown down with a good quality seeds mixture composed of *Chewing's Fescue*, *Creeping Red Fescue*, *Smooth Stalked Meadow Grass* (*Dutch Prato*), *American Browntop* and *Dutch Rye Grass* (*Heraf*).

This mixture has done extremely well and has stood up to the exceptional heat and dryness of last year's summer aided, of course, by plenty of water, fertiliser and dressings of organic matter.

The tees were sown with much the same type of seeds as those used for the fairways, the main difference being that the *Dutch Smooth Stalked Meadow Grass* was replaced by *Merion Blue Grass* which has thrived and developed rapidly in the soil and climate of Valcros.

Now that a full year has passed, it may be of some interest to record some of the current upkeep problems and results.

Fertilisation

The same type of fertilisers were used on the new turf at Valcros as those used generally elsewhere. The greens were fertilised in the early part of the growing season with complete fertiliser mixtures containing sulphate of ammonia, dried blood, superphosphate, sulphate of potash and sulphate of iron.

Towards the end of the season the fertilisers were gradually reduced to light applications of nitrogen in the form of sulphate of ammonia.

Fairways and tees received regular applications of compound granular fertiliser. Experience over a full growing season at Valcros does suggest that rather more fertiliser is necessary in this warmer climate due, perhaps, to the ultra-rapid growth of the grass and also to a very heavy watering and cutting programme.

Diseases

These are, if anything, more dangerous in the warm climate of the Mediterranean. *Fusarium Patch Disease*



cut the lot with a **BROTT**

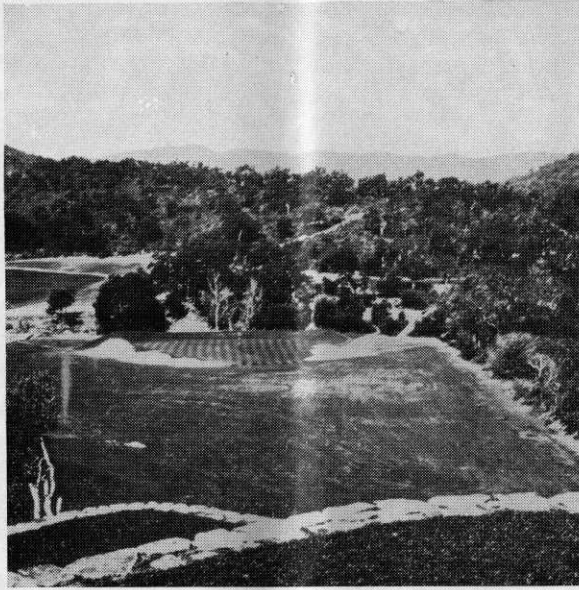
BROTT 20 - A REAL ADVANCE IN GRASSCUTTING TECHNIQUE

The day you get a BROTT will be the day you discover what a real grasscutter will do. With its unique cutting action it cuts the finest lawns or the roughest orchard grass—3 speed and reverse to deal with all conditions—backwards or forwards. It collects leaves and rubbish; maintenance is negligible. It cuts and rolls up to $\frac{1}{2}$ acre per hour and collects the grass into large easily handled bags—or into a trailer drawn behind—or spreads it behind as a mulch. The operator rides in comfort and safety all day long and it has all-year round usage. Instantly adjustable cutting height. Every grasscutting advantage in one magnificent machine. Send for full details today—and for the name of your local authorised dealer.

Manufactured solely by the patentees:
Edward Thomas & Co. (Oswestry) Ltd.,
(Dept. S6), Whittington Road,
OSWESTRY, SHROPSHIRE.

Tel: 3271 (3 lines)





propagates with incredible rapidity and will slash across a green literally in 24 hours.

Some trouble was also experienced with *Ophiolobus Graminis* during the month of July but good control was obtained by the use of a Mercury Fungicide called Solusanigran. This product gives excellent control of Fusarium as well.

One of the difficulties in treating turf diseases here is the question of watering with the result that the fungicides employed are often washed away.

The only formula is to water heavily before treatment and thoroughly soak the ground to a good depth, carry out the treatment and then leave the greens as long as can be risked before watering again.

The all important thing is to avoid trouble by immediate detection of disease and rapid treatment or, even better, well-timed preventive treatment before disease appears.

Weed Control

So far this has not presented a very great problem, because the soil at Valcross has a fairly low pH. Clover has been one of the chief enemies but responded very well to C.M.P.P. selective weed killers.

The short 14th has a deep watercourse behind the green to add to the interest.

Pests

Cutworms are our chief enemy here. These caterpillars invade the greens in hordes eating the young grass shoots voraciously. If left for long, the cutworms are quite capable of thinning out the grass to the extent of serious damage.

Chlordane mixed with sand or compost has given good results—20 per cent Chlordane was used and applied at 9 grs. to the square metre. Good control was also obtained with D.D.T. (5 per cent). This was applied at 30 grs. to the square metre.

Treatment against cutworms has to be repeated quite often for even after the greens have been treated, fresh armies of these pests invade the greens anew. So numerous are these armies that they can often be seen making their way to the greens.

Sowing

Can take place from the beginning of March till June and from September

to the middle of November. That is one of the great advantages that the Mediterranean climate offers to the greenkeeper and a priceless asset in the making of new golf courses. Germination of the seed is rapid by virtue of the soil warmth. Growth and colonisation of the grass is amazingly quick too, with the result that weed competition in new swards is appreciably reduced.

Indeed, it is true to say that the greenkeeper is not always faced with disadvantages, for another asset he has, is comparatively mild and warm winters which allow him to proceed almost without interruption on his winter programme of work.

Watering

Has to be intensive and frequent. The greens are watered by pop-up sprinklers placed around the perimeter. Normally between five and six sprinklers to each green.

The tees are watered by the same system. The system is semi-automatic

and five or six holes can be watered at a time. Watering has to be done in the early morning or evening to avoid loss of water through evaporation.

The fairways are watered by means of self-travelling sprinklers. These sprinklers pull themselves forward by means of a thin cable attached to a small steel anchor.

The system is a great labour saver for the sprinklers can be set to cover a distance of 150 yards without being touched and they can water over a width of 40 yards. Valcros possesses 18 sprinklers which are capable of watering 2,700 yards of fairway each night, thus allowing each fairway to be watered three times a week.

We have been helped greatly in all our work by the constant help and advice of Mr F. W. Hawtree and by The Sports Turf Research Institute with their ever-ready advice on many of our problems. Finally, congratulations to our young greenkeeper, Mr Arcani, who handled many problems and many men for the first time in his life with such deserved success.

"SISIS" REGD PATENTS

TURF MANAGEMENT EQUIPMENT

for GOLF COURSE FAIRWAYS

12ft SCARIFIER AND BRUSH IMPLEMENTS. Model LSB/12

- For all tractors with hydraulic Linkage
- Simply and quickly attached without special tools.
- Controlled from driving position.
- Outer sections fold for transport through Gateways.
- Heads flexibly mounted for following ground contours.
- Interchangeable Brush Sections can be quickly substituted for the rake scarifier units.

RAKE SCARIFYING

with the coiled spring tine implement, regularly applied, will assist in eradicating course growth and trailing weeds. The grasses and weed seed heads are raised for mowing. Constant use improves the sward density as the grass plants are encouraged to colonise bare or weedy patches.

A fully illustrated brochure, reference LLF, sent on request.



"SISIS" Patent EQUIPMENT,

W. HARGREAVES & Co. Ltd.,
MACCLESFIELD - 6363 - CHESHIRE



Berk Summer Range

of turf treatments for busy

Watering

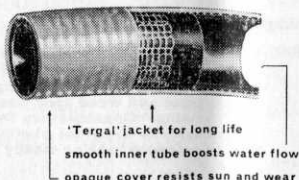


'Supplex' Sprinkler

This triple-bore plastic hose is minutely perforated throughout its length. One end is closed so that when the perforations are opened by water pressure, a *fine* rain-like spray is produced which soaks without flooding – in a rectangular pattern. Supplex is the logical choice for rectangular areas. Lengths are available to cover, in one operation, tennis courts, bowling greens and cricket pitches.

'Tricoflex' Reinforced Plastic Hose

For conveying water, Tricoflex is three ways superior to rubber hose. Tricoflex withstands the kind of rough handling that soon destroys a rubber hose; it weathers better – it is particularly resistant to long exposure to the sun – and its light weight and suppleness make it easier to coil and carry. Tricoflex hose is constructed of 3 layers: black P.V.C. inner tube, with mirror finish for optimum water flow, knitted jacket of 'Tergal' polyester fibre and an opaque vivid yellow outer cover of polythene. Tricoflex has been proved in rugged tests on building sites – will last you years!



Moss Control

Berk Moss Control compounds are based on mercury – this is present in an insoluble and harmless form. Mercury not only kills moss but prevents subsequent growth – it can control moss for up to three years. Three compounds are available: the choice depends on the individual requirements and the time of the year.

M.T.S. (Mercurised Turf Sand)

This is applied at 4 oz. per square yard from early spring to late summer. It kills moss immediately, reduces weed population and, because it contains a quick-acting nitrogen fertilizer, stimulates grass growth.

Moss Killer

This is applied at 4 oz. per square yard at any time of the year but especially prior to normal autumn treatments. Moss Killer does not contain a grass stimulant but gives rapid control over moss.

Moss Eradicant

A special formulation to control the following crop of moss while killing the immediate crop gradually – so there is no disfigurement from dead moss.

Hints on Moss Control

1. Moss will always invade and colonise neglected turf.
2. Do not rely on raking alone to remove moss. This spreads moss spores and fragments which can re-infest the site. Always use a moss killer in conjunction with raking.
3. Correct turf management should always be practised. After using a moss killer, the factors responsible for the appearance of moss should be removed.
4. Some common causes for the appearance of moss are:
 - *Poor drainage and aeration
 - *Bare patches
 - *Over-rolling and compaction
 - *Acid and undernourished soils
 - *Persistent close mowing.