

ONE DOWN AND FOUR TO GO



5000 Square Yards
ACCURATELY
covered in two hours



For perfect appearance and consistent performance turf needs regular nutrition. Fertilizers and fertilizers plus weed-killers can only give maximum benefit when they are applied regularly and ACCURATELY.

The Quillot 39" Estate Model ensures accurate distribution of most dressings, at the appropriate rates, from $\frac{1}{4}$ —8ozs.

per square yard, or grass seed for sowing or re-seeding. 39" spread for easy coverage; towbar adjusts for manual operation or power towing. Hopper capacity approx. 112 lbs. (dependent on the material being spread).

Price £42 ex works. Diffuser £3 12 6

Alternative meter rollers available.

QUILLOT LIMITED

Harvest House, Felixstowe, Suffolk. Tel: Felixstowe 4444

GREENKEEPER

HON. EDITOR : F. W. HAWTREE



FOUNDED 1912

PUBLISHED MONTHLY FOR THE
BENEFIT OF GREENKEEPERS,
GREENKEEPING AND THE GAME
OF GOLF BY THE BRITISH GOLF
GREENKEEPERS ASSOCIATION

President:

CARL BRETHERTON

Vice-Presidents:

SIR WILLIAM CARR
R. B. DAWSON, O.B.E., M.S.C.,
F.L.S.
GORDON WRIGHT
F. W. HAWTREE
S. NORGATE
I. G. NICHOLLS
F. V. SOUTHGATE
P. HAZELL
W. KINSEY
R. C. AINSCOW

Chairman:

H. G. SHEPPARD
Weston-Super-Mare G.C.

Vice-Chairman:

J. SIMPSON
Ponteland G.C.

Hon. Secretary & Treasurer:

C. H. DIX
Addington Court G.C.
Featherbed Lane
Addington, Croydon, Surrey

Executive Committee:

Carl Bretherton (President),
G. Herrington, J. G. Bryan,
E. H. Benbow, S. T. McNeice,
J. Parker, J. Simpson,
A. A. Cockfield, V. Crabtree,
E. W. Folkes, D. G. Lord

Hon. Auditors:

Messrs. SMALLFIELD RAWLINS AND
Co., Candlewick House, 116/126
Cannon Street, London, E.C.4

Hon. Solicitor:

R. A. Beck
21 Lime Street, London, E.C.3

The Association is affiliated to the
English and Welsh Golf Unions.

No. 241 New Series

APRIL 1965

SPRING FEVERISH

*Spring has tossed
Her wintry wraps.
The greens look lost
In seas of traps.*

*Spring is awaking,
And either I'm taller,
Or else they're making
The golf balls smaller.*

—CLIFF MACKAY

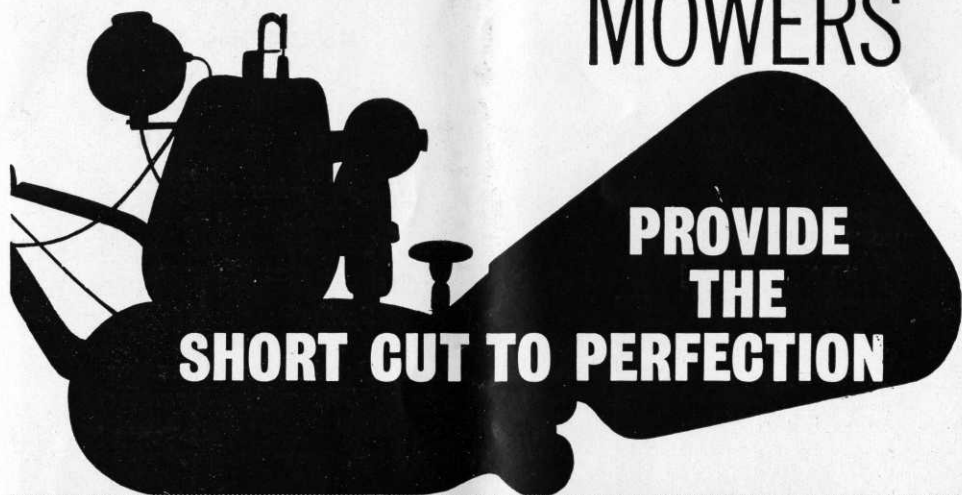
APRIL CONTENTS

- Page 3 TEE SHOTS
4 LAST MONTH
8 F. G. HAWTREE MEMORIAL
FUND
10 DUTIES OF REFEREES, ETC.
12 SPECIAL OCCASIONS
14 PUBLICATIONS RECEIVED
15 SECTION NOTES
17 SITUATIONS VACANT AND
CORRESPONDENCE
18 S.G.G.A. NEWS
19 MRS. GREENKEEPER
20 HON. SECRETARY'S NOTES

EDITORIAL AND ADVERTISEMENT OFFICES: Addington Court Golf Club, Featherbed Lane, Addington, Croydon, Surrey. Telephone: SANDerstead 0281. SUBSCRIPTION RATE: 14/- for 12 issues post paid. Published during the first week of each month. LATEST COPY DATE: 8th of month prior to insertion. All rights reserved. Reproduction of original articles and photographs in whole or in part is prohibited. This Magazine shall not, without the written consent of the Publishers first given, be re-sold, lent, hired out, or otherwise disposed of. Contributions and photographs of interest are invited.

TO INSERT A CLASSIFIED ADVERTISEMENT, write to the Advertisement Manager at the above address. The rate is 6d. per word (minimum 15 words). Box Number, 1/6 extra. Remittance must be sent with order. Please state number of insertions required and write advertisement in block letters. Advertisements will be inserted in the first available issue.

GREENS MOWERS



you have a growing need for—

Greens Hand Machines, Motor Mowers,
Rough Cuts, Verge Cutters, Gang Mowers.

GREENS 20 FOR MOTOR MOWERS

Immaculate grooming for big lawns. 4-stroke engine, kick starter, 20" cutting width. Dog clutch puts 6-Blade cylinder out of drive for crossing paths. Drop-out cutting unit.

GREENS RANGER Mk3 GANG MOWERS

Up to 11½ acres an hour! — Hugging the ground, cropping closely and evenly. Can be ganged into 3, 5 or 7-unit mowers. Greens Ranger Mowers are the complete answer for quick and economic cutting of large areas.



A HAWKER SIDDELEY COMPANY

THOMAS GREEN AND SON LTD., NORTH STREET, LEEDS, 2 • Telephone: Leeds 20357

Hawker Siddeley supplies aircraft, aerospace equipment, diesel engines, electrical power generation and distribution, electronics, alloys, and general engineering products. World-wide sales and service.

TEE SHOTS



by the Editor

The 36th International Turf Grass Conference and Show of the Golf Course Superintendents' Association of America took place at the Sheraton Hotel, Cleveland, Ohio, on 7th to 12th February. More than 40 speakers took part in the six education assemblies and more than 33,000 square feet were devoted to the Association's "Greatest Show on Turf" in the hotel's exhibit hall. The area was taken up by a record number of 97 commercial firms and attendance was close on the 3,000 mark.

* * *

The National Association of Groundsmen announce that the Groundsmen's Field Day will be held on Wednesday, 7th April 1965, at University of London Athletic Grounds, Motspur Park, New Malden, Surrey (by kind permission of the University of London). Demonstrations will cover Renovation of Winter Playing Fields, including the first full scale working demonstration of the "Contravator" and Lospred seed sower. A demonstration of drainage work, trenching, pipe-laying and use of the new plastic drain. Spreading of top dressings. Demonstration of New Machines and recent introductions also Machines for special jobs — Trulute, etc.

* * *

Messrs Hargreaves have added two more useful machines to their wide range. The "Contravator" * which is basically a tougher, wider application of the Rotorake principle tiths a surface with minimum disturbance while the "Lospred" * immediately behind measures grass seed with extreme accuracy and sows it at once in the prepared ground. It is expected that lower seed rates can be employed and the Contravator and Lospred in tandem will have many uses in speeding up constructional and renovation jobs.

* Trademarks.

CANNOCK FUSARIUM SPECIFIC
THE CANNOCK AGRICULTURAL CO. LTD., CANNOCK, STAFFS.
Send for free illustrated Brochure

LAST

MONTH

by

The Editor

Everything happens on Sunday in Barcelona. Take 28th February for instance. We were on the way to the golf club at El Prat in the morning when the road became lined with crowds and traffic was swung to the off-

side. This measure was evidently meant to keep the two near side lanes clear and might have been successful if half the drivers had not decided to return to the original side when the wrong side came to a halt. This, as appeared later, was due to another policeman trying to weave an oncoming line of traffic through the two which his friend at our end was launching at him. Two helicopters buzzed disconsolately up and down but without bombs there was nothing they could do.

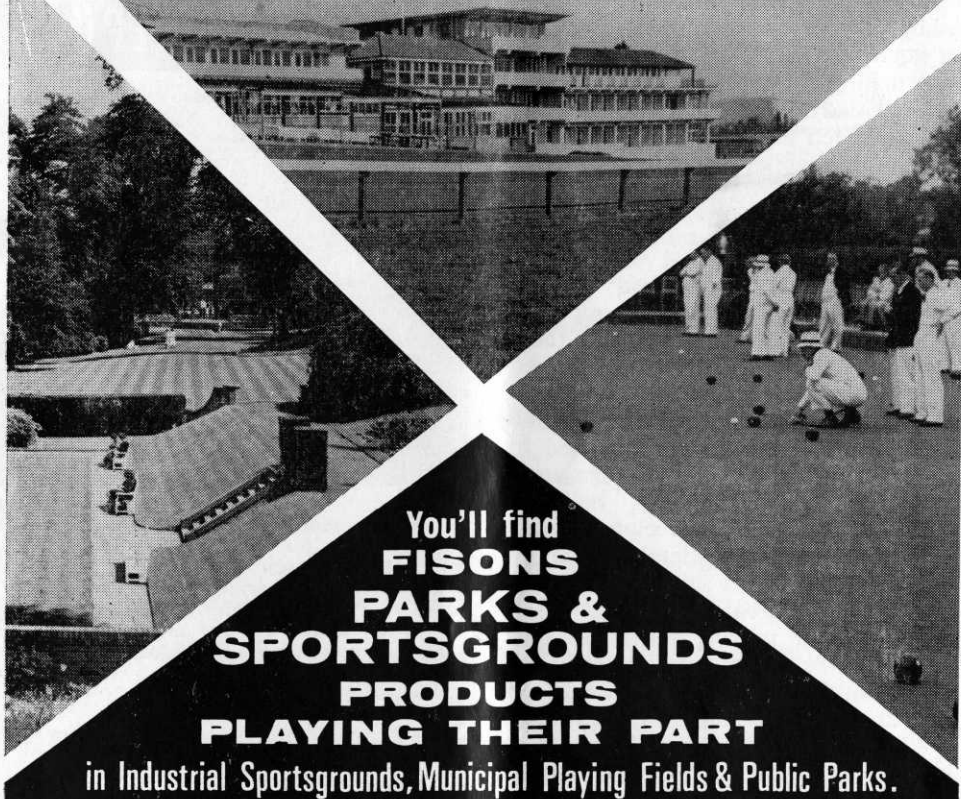
Veteran Car Rally

At the same time, a Rallye Coches Epoca (Veteran Cars, in case your holiday on the Costa Brava was wasted) swept into the melee on the side which was still moving and found itself hurtled along at a pace quite unsuitable to its age and dignity. Then that side stopped while we moved; and so on, alternately, for the next two miles. Frequent stops and starts in a belt-driven phaeton are wearing on the driver's clutch-arm, if nothing else and Hispano Suizas with less visible mechanisms coughed ominously. An antique Coca Cola wagon with mustachioed attendants dressed for Edwardian tennis had thoughtfully brought a break-down wagon in support.

Still Sunday

It was still Sunday morning when we got to El Prat and the final of a knockout competition claimed our attention at once. A certain Senor Fernandes, one of the club's best players, eventually produced a pin-splitting teeshot at the short 17th and a controlled hook round a pine tree with a spoon to the 18th while his opponent faded away. By the time we had admired the course and the club house, it was after two o'clock and the Spanish element in the party was nearly ready for lunch. Indeed, we were sitting down by three o'clock which is reasonable in those parts but tends to eliminate tea. Even so, we were having a cup soon after five at the Barcelona Yacht Club where a considerable number of admirable vessels were drawn up, including a representative from the Thames.

In every field of grass growing



You'll find
**FISONS
PARKS &
SPORTSGROUNDS
PRODUCTS**
PLAYING THEIR PART

in Industrial Sportsgrounds, Municipal Playing Fields & Public Parks.

FERTILIZERS

Years of study and experimentation at our own Research Station have resulted in the production of a most comprehensive range of Turf Fertilizers - Fisons PS Range - each of which has its own specific application.

WEEDKILLERS

For selective and total weed-killing and for combined feeding and weedkilling, Fison's have evolved what is probably the most successful combination of weed control products available today.

PEAT PRODUCTS

The rich, humus forming properties of Humull Lawn Peat are essential for promoting good root development and maintaining the growth of fine grasses. Specially selected grades of Peat are also available for soil improvement, shrub planting, mulching and composts.

FISONS HORTICULTURE LIMITED

PARKS AND SPORTSGROUNDS DEPARTMENT, HARVEST HOUSE, FELIXSTOWE, SUFFOLK

**FREE
ADVISORY
SERVICE**

Fisons Turf Advisory Service will gladly give practical advice on any problems concerning Turf Maintenance. For a free visit by a local Turf Specialist, write to the above address.

The International Salon Nautico was elsewhere and smaller than our Boat Show — 10 Metre motor cruisers and every conceivable device for water skiing and related activities, but few sailing dinghies or yachts. Upstairs, for good measure, an art exhibition was thrown in. We naturally preferred the sculpted lady golfer, two large canvasses painted at El Prat and a curious gouache of a golfer looking for his ball in a fog.

Capacity Crowds

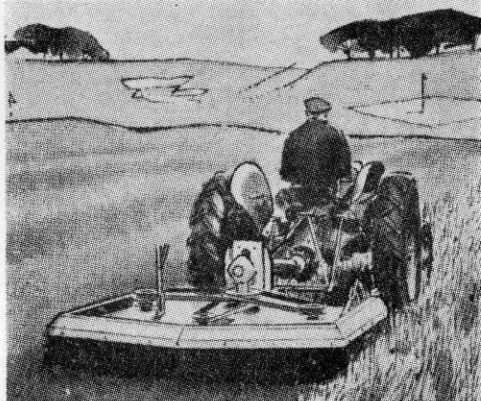
By now there was just time to get back to the Barcelona-Real Madrid game at 8 p.m. The stadium is reported to hold 120,000 and they were all there when thunder flashes and a scared black cat preceded the home team on to their pitch. The visitors in white shirts, shorts and stockings followed to slightly less thunderous applause. Seventeen free kicks later, half-way through the first half, Barcelona scored. This released a considerable tide of emotion and a rocket sailed into the air to announce the goal to the city. Alas, there were no rockets thirty-two and forty-one free kicks later respectively when Madrid scored their two. An older and more artful team, they were hard pressed for the rest of the game but held on to their lead and would have added another if the final whistle had not blown too soon.

Another Match!

As we came away, another match of less consequence was starting and there had been another before the big game, so the patrons could not complain of short measure. *Agrostis stolonifera*, by the way, on the pitch and only a tiny area of wear round the goal mouths. The floodlighting was flattering, making the whole affair look like a colour slide, but evidently this is the grass for that climate. When it is planted, it is broadcast by the handful and then rolled with a row of fairly sharp discs, two or three inches apart, which squeeze the pieces into the soil. Greens, tees and fairways get exactly the same treatment.

By now it is 12.10 a.m. on 1st March and supper just over. Roll on Monday and the relaxation of a hard day's work.

Keep the rough under control!



You've seen the anxiety of players searching for lost balls in uncontrolled rough. Time wasted. Time that could otherwise be enjoyed in play. The difficulties in keeping the rough under control are only too well known as are the odd occasions available to top the rough without interfering with play. And then only if the weather permits.

The Hayter 6/14 will give you anytime cutting at a pre-selected height up to 6 inches with easy positive adjustment. It is a rotary mower fitted with special side stone guards and is ideal for controlling the rough on golf courses.

It cannot choke, however wet the grass. Its specially balanced cutter blades revolving at high speed ensure a perfectly level finish. And not a stalk is left standing.

Hayter



* For full details and literature, cut out complete advertisement and send with name and address to:-

HAYTERS (SALES) LIMITED,
34, SPELLBROOK LANE,
BISHOP'S STORTFORD, HERTS.
Tel.: Sawbridgeworth 3444-5-6

SOONER OR LATER YOU'LL BUY A HAYTER

Talk about perfect turf?

Walk about perfect turf!

with

'CLOVOTOX' Selective weedkiller for controlling clovers and other weeds in turf.

'DICOTOX' Showerproof selective weedkiller for economical general weed control in turf.

'DICOTOX' EXTRA Four times as concentrated as 'Dicotox'.

'SUPERTOX' 30 Broad spectrum selective weedkiller for turf. Kills weeds *and* clovers.

'MERSIL' Concentrated turf fungicide with rapid activity. In powder form for application as a suspension in water.

'MERFUSAN' Turf fungicide with similar range of action to that of 'Mersil'. In powder form for dry application.

DDT CONCENTRATE Insecticide for the control of turf pests including leatherjackets.

MERCURY BICHLORIDE Controls worms.

Names quoted thus 'Clovotox' are trade marks the property of May & Baker Ltd.

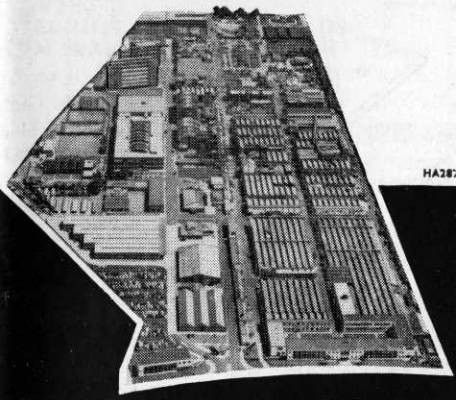
Talk to

MAY & BAKER LTD

DAGENHAM

ESSEX

Tel: DOMinion 3060 · Exts. 342 and 359



HA2872

**The people with turf
protection know-how**

M&B BRAND PRODUCTS

THE

F. G. HAWTREE

MEMORIAL FUND

This fund was started in 1956 by the British Golf Greenkeepers Association, the Artisan Golfers Association, the National Association of Public Golfers and the Addington Court Golf Club. Mr Hawtree had played a large part in the founding of these organisations and had remained active in all four up to his death in 1955.

The sum subscribed was just over £600 and the trustees decided that the money should be devoted to sending young greenkeepers each year on a course of instruction at the Sports Turf Research Institute, Bingley, Yorkshire.

So far, the fees for seventeen pupils have been paid by the fund with living

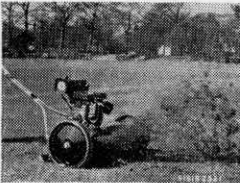
expenses while away from home where employers could not help. Four more will be going to Bingley this year and expenditure and tax will then be approximately £240 while interest and further donations have added about £100 to the original sum.

The Trustees are anxious to hear from young men with two or three years' practical experience on golf courses who need help in further training. They will also be grateful for donations to increase the usefulness of the fund. The Hon. Secretary is C. H. Dix, The British Golf Greenkeepers Association, Addington Court Golf Club, Featherbed Lane, Addington, Croydon, Surrey.

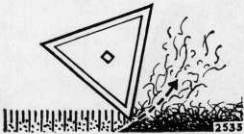
"SISIS"
REGD PATENTS

**ROTORAKE and
AUTO-ROTORAKE**

TRADE MARKS



DIRECTION OF TRAVEL



"SISIS" Patent with tine action cutting upwards

Vertical Turf Fibre Cutters

For many years Professional Groundsmen have raked and mown grass in an attempt to reduce turf fibre.

The "SISIS" ROTORAKE is designed to achieve this — the cutting tines rotating upwards, sever the unwanted fibre and prostrate growth below the surface.

- REMOVE EXCESS FIBRE**
- REDUCE TRAILING WEEDS**
- ELIMINATE SURFACE NAP**
- MAKE MOWING MORE EFFICIENT**

The "SISIS" ROTORAKE is made in 14" and 20" Models and the Cutting reel is driven with 4-stroke engine.

The "SISIS" AUTO-ROTORAKE is fully motorised both in respect of the fibre cutting reel and the forward overground traverse. A Heavy Duty Machine.

Demonstrations arranged

Send for details:

"SISIS" Patent EQUIPMENT,

"SISIS"
PATENT
EQUIPMENT

**W. HARGREAVES & Co. Ltd.,
MACCLESFIELD - 6363 - CHESHIRE**



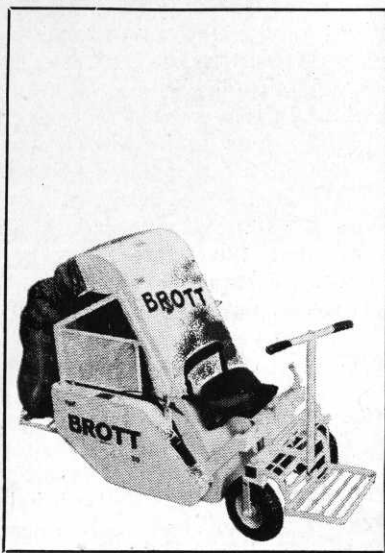
cut the lot with a **BROTT**

BROTT 20 - A REAL ADVANCE IN GRASSCUTTING TECHNIQUE

The day you get a BROTT will be the day you discover what a real grasscutter will do. With its unique cutting action it cuts the finest lawns or the roughest orchard grass—3 speed and reverse to deal with all conditions—backwards or forwards. It collects leaves and rubbish; maintenance is negligible. It cuts and rolls up to $\frac{1}{2}$ acre per hour and collects the grass into large easily handled bags—or into a trailer drawn behind—or spreads it behind as a mulch. The operator rides in comfort and safety all day long and it has all-year round usage. Instantly adjustable cutting height. Every grasscutting advantage in one magnificent machine. Send for full details today—and for the name of your local authorised dealer.

Manufactured solely by the patentees:
Edward Thomas & Co. (Oswestry) Ltd.,
(Dept. S6), Whittington Road,
OSWESTRY, SHROPSHIRE.

Tel: 3271 (3 lines)



We reprint in full the first two pages of this excellent guide issued by the Royal and Ancient Golf Club because it will not only be of use to those for whom it is intended but also to all golfers in reminding them of situations which can arise and could be avoided.

DUTIES OF REFEREES AND COMMITTEE MEMBERS UNDER THE RULES OF GOLF

DEFINITION 26 defines the principal duty of a Referee as being to decide questions of fact and of golf law. It is not sufficient for him to render a correct decision when appealed to: he must also at all times be sufficiently alert to observe accurately and to interpret correctly all the events which may occur during a round. But within the scope of these duties, he is assigned to a match to help ensure that it will be fairly played under sporting conditions.

This brings up the question of the referee's ethical position when he sees a player about to break the Rules. The referee does not have the authority to prevent a wilful violation of the Rules, but he certainly does have the obligation to advise the players about the Rules. It would be contrary to the spirit of fair play in golf if a referee failed to inform a player of his rights and obligations under the Rules and then penalised him for a violation that he could have prevented.

The following situations are among those where the referee may be able to prevent a breach of the Rules.

- (1) Ask players on first tee, if they have counted their clubs.
- (2) Ask players to identify brand and number of ball on first tee.
- (3) If player at any time puts a second ball into play or plays provisional ball, ensure that player can identify both balls.
- (4) If player tees ball ahead of markers, draw his attention to it before he drives.

- (5) If player is about to lift loose impediment in a hazard or water hazard, remind him that his ball is in a hazard.
- (6) If player is about to adopt wrong dropping procedure, call his attention to it and point out correct procedure.
- (7) If a player is about to play a second ball, ask player whether it is provisional ball.

An occasion when a referee can assist a player is when he is playing from bushes, etc., and is in process of taking his stance: a referee should watch the player and guide him in his actions if need be.

Sometimes a player may be careless in his observance of a Rule. If there has been no actual violation, the referee should caution the player and so minimise the possibility of having to call an infraction later: this can be done by making sure that the player is familiar with the particular Rule.

At times awkward situations will arise. The referee should be firm and positive, but take plenty of time.

It is always as well to consult the Rule Book and it will help to let the players read it. Frequently in reaching a decision, the intention of the player can be important and determination of this can be very useful as a routine approach to a questionable action, as for example if this player should appear to test the depth of sand in a bunker or to touch the line of his putt when there are no visible loose impediments to be removed.

Finally there are difficult questions of fact raised by casual water and interference by an obstruction. To be deemed casual water, a temporary accumulation of water must be visible on the surface of the ground before or after the player takes his stance, under normal pressure of the player's weight. As for interference by an obstruction, the interference must be physical for the player to evoke the Rule. The Rule is not intended to cover mental interference or interference established by wild contortions.