

DON'T LEAVE IT TOO LATE!



NOW is the time to get your mower in for that overhaul—carried out by skilled engineers—1963 tools and equipment. Over 10,000 spares in stock. Fleet transport for immediate delivery.

IT'S EXPERIENCE THAT COUNTS

RELF & KENDALL HAVE THE ANSWER WITH THEIR

2-PLUS

REPAIR SERVICE

1. Exchange Assembly Service of Engines, cutters, Magnets, Gear-boxes, etc.
2. Express workshop facilities and delivery of spares.

Ransomes

Authorised service Repair Agents.
Sales, Spares and Service

Officially Appointed
SERVICE DEPOT for

Villiers & JAP

INDUSTRIAL AND AGRICULTURAL
ENGINES

Main agents and distributors for
Clinton Engines, Spare parts and service
exchange assemblies now available
from stock

RELF AND KENDALL

406 BRIGHTON ROAD, SOUTH CROYDON, SURREY. CR0 0578
11 STATION ROAD, NEW BARNET. BARNET 8228

Official London Area Distributors to Ransomes,
Sims & Jefferies for specialist machines.



Agents for Dennis, Shanks, Greens,
Atco, Lloyds and Allen Motor Scythes.

THE BRITISH GOLF

GREENKEEPER

HON. EDITOR: F. W. HAWTREE.



FOUNDED 1912.

PUBLISHED MONTHLY FOR THE BENEFIT OF GREENKEEPERS, GREENKEEPING AND THE GAME OF GOLF BY THE BRITISH GOLF GREENKEEPERS ASSOCIATION

President:
CARL BRETHERTON

Vice-Presidents:
SIR ROBERT WEBBER, J.P., D.L.
SIR WILLIAM CARR
R. B. DAWSON, O.B.E., M.S.C.,
F.L.S.
GORDON WRIGHT
F. W. HAWTREE
S. NORGATE
I. G. NICHOLLS
F. V. SOUTHGATE
P. HAZELL
W. KINSEY
R. C. AINSWORTH

Chairman:
D. G. LORD,
Swansea Bay, G.C.

Vice-Chairman:
G. T. Geddes,
Moor Allerton, G.C.

Hon. Secretary & Treasurer:
C. H. DIX,
Addington Court G.C.
Featherbed Lane,
Addington, Croydon, Surrey

Executive Committee:
Carl Bretherton (President),
G. Herrington, J. G. Bryan, E. H.
Benbow, G. J. O'Gorman, S. T.
McNeice, O. P. Jones, B. V.
Fordham, J. Parker, T. Brennan,
J. Simpson, A. A. Cockfield

Hon. Auditors:
Messrs. STOV, HAYWARD AND CO.,
97-99 Park Street, London, W.1.

Hon. Solicitor:
R. A. BECK,
21 Lime Street, London, E.C.3.

The Association is affiliated to the English and Welsh Golf Unions.

No. 216 New Series

MARCH 1963

"I always think of nature as a great spectacle, somewhat resembling the opera."

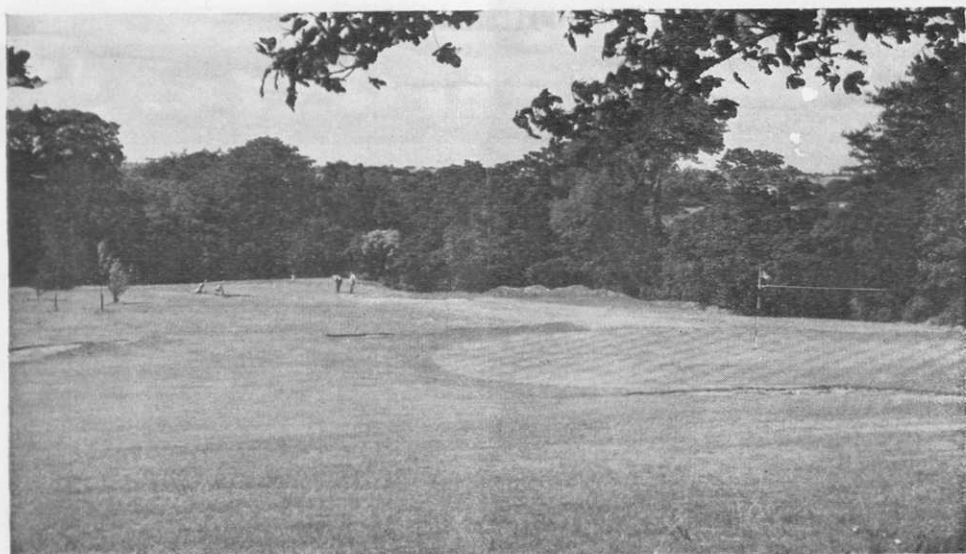
BERNARD DE FONTENELLE.

MARCH CONTENTS

- Page 3 TEE SHOTS.
4 QUESTIONS FREQUENTLY
ASKED.
7 NEW DISTRIBUTOR.
8 SPECIAL OCCASIONS.
10 NEWS AND NOTES.
12 SECTION NOTES.
14 SITUATIONS VACANT.
16 SCOTTISH GREENKEEPERS
NOTES VIEWPOINT.

EDITORIAL AND ADVERTISEMENT OFFICES: Addington Court Golf Club, Featherbed Lane, Addington, Croydon, Surrey. Telephone: SANDERSTEAD 2690. SUBSCRIPTION RATE: 14/- for 12 issues post paid. Published during the first week of each month. LATEST COPY DATE: 8th of month prior to insertion. All rights reserved. Reproduction of original articles and photographs in whole or in part is prohibited. This Magazine shall not, without the written consent of the Publishers first given, be re-sold, lent, hired out, or otherwise disposed of. Contributions and photographs of interest are invited.

TO INSERT A CLASSIFIED ADVERTISEMENT, write to the Advertisement Manager at the above address. The rate is 6d. per word (minimum 15 words). Box Number, 1/6d. extra. Remittance must be sent with order. Please state number of insertions required and write advertisement in block letters. Advertisements will be inserted in the first available issue.



**"Better than anything
on the market
at the present time" . . .**

Lancashire Golf Club recommends HI-GROW and SEAGROW to all Golf Clubs.

First-hand testimony to the results achieved with HI-GROW and SEAGROW. The secretary writes:

"We consider that Hi-Grow and Seagrow fertilisers are better than anything on the market at the present time. We would have no hesitation at all in recommending Hi-Grow for use on the fairways throughout the growing season. Seagrow has been used on newly made and old established greens and this has produced marvellous results. Our greens have received praise from everyone because of the marvellous results, and the beautiful colour which has been maintained throughout the winter. We have no hesitation in recommending your fertilisers to all golf clubs".

HI-GROW

The top-quality fertiliser with the exceptionally high N.P.K. content—9% N, 9% P, 15% K.

SEAGROW

A seaweed based fertiliser which has achieved spectacular success.

Write for full technical details and highly competitive prices to

PEAKS OF WIGAN

Peaks—Newtown—Wigan—Telephone 44278



TEE SHOTS



by the Editor

GOLF course watering systems are seldom demonstrated in aeroplanes. Mr. Tim Hilton, Managing Director of British Overhead Irrigation Ltd., contrived, nevertheless, to show us the workings of one of his automatic systems last week in a Viscount on the way to Germany.

The "pop-up" sprinkler came apart in five seconds with the aid of a table knife borrowed from Lufthansa, though a screwdriver and pliers are normally recommended. Dismantling is occasionally necessary to clear the built-in filter surrounding the gears. A small screw adjusts the angle of the sector to be watered from 30° to 330°, the radius of throw being about 40 feet. With three or four pop-ups on a ring main round each green, the whole putting area is covered comfortably—all from black plastic cylinders, four inches long, two inches in diameter, weighing under eight ounces.

Next we saw the remote control valve, which can be operated from the clubhouse through a $\frac{3}{8}$ in hydraulic control tube laid with the mains. The master controller—size again measured in inches—controls nine pairs of greens, watering them in rotation for specified periods at pre-set times, up to a fourteen-day cycle. Thus any quantity of water up to the limit of the supply can be applied daily (or nightly), every other day, weekly and so on up to a fortnight. The cycle then repeats itself. If rain comes, the whole system shuts down.

Draining off in winter can also be arranged automatically in low sections of the mains by valves which open when pressure is shut off.

Incidentally, the additional cost of fully automated green watering when installing a new system can be as low as 20%.



SOLVE ALL **TURF PROBLEMS** WITH -

HUMULL THE ORGANIC **TURF DRESSING**

RECOMMENDED BY LEADING TURF CULTURE EXPERTS
THE ECLIPSE PEAT COMPANY LIMITED
ASHCOTT, P.O. BOX 12, BRIDGWATER, SOMERSET



QUESTIONS FREQUENTLY ASKED

Typical questions and typical answers in the United States will interest greenkeepers here and may give a new angle on treatment. This selection comes from the South Western office of the U.S.G.A. Green Section, one of the five regional offices covering the North American continent. It is reprinted with grateful acknowledgments to the U.S.G.A. Golf Journal. What?

When should overseeding be done in bentgrass greens which are highly infested with *Poa annua*?

The purpose of overseeding with additional bentgrass is to increase the relative population of bentgrass to *Poa annua*. Normally, seeding would be done either in the fall or spring. Seeding during these two seasons should not be discredited or discontinued. However, it is felt that much can be gained from summer overseeding. The procedure followed has been either to power spike in two or three directions to open the turf and permit more seed to contact the soil or to use a verticut with the reel disengaged to accomplish the same effect.

Should a summer aeration be warranted, such an overseeding could be made concurrently. Inasmuch as a very close observation is essential during the summer and especially if the greens are aerified, the possibility of losing seedlings due to drying is reduced greatly.

The rate to seed should be in the range of two or three pounds of seed per 1,000 square feet. While this programme has helped most of those who have tried it, it does not represent a cure-all for *Poa annua*. Rather it is possibly another step in management to discourage *Poa annua*.

Is any benefit derived from winter fertilisation of fairway turf?

Virginia tests have demonstrated that winter applications of fertiliser, even on steep roadside slopes, have had little

leaching loss. USDA tests have shown that such feeding has an unexpectedly important influence—there is a great deal of winter root growth even though grass tops are frozen stiff.

An experiment at the Lawn Institute in Marysville, Ohio, with the application of high rates of urea to frozen bluegrass sod in the middle of January resulted in just as attractive a spring turf as did equal amounts of fertiliser applied in March. Also, the effects of this mid-winter feeding continued through the summer in the darker green colour of the experimental area. At least one beneficial effect was that there was no surge of spring growth that aggravates spring mowing.

What kind of topdressing mixture is best for greens?

Once a topsoil mixture is selected and the green constructed, every effort should be made to keep the subsequent applications of topsoil as nearly like the original as possible. The best way to go about this is to exercise great care in selecting the original topsoil mixture so that there will be no need for a change later on.

Much of the guesswork can be taken out of the selection of the proper soil mixture with a physical analysis. Such an analysis measures the porosity, permeability, and moisture retention of a soil mixture. These are important characteristics of any soil mixture; and it follows that it would be much better to test these characteristics before the final selection of a soil mixture is made than to select the mixture, incorporate it in a green, and then have it turn out to be undesirable.

If it should become necessary to change the structure of soil under turf, every effort should be made to avoid any type of layering. At least one method which has been successful is the incorporation of amendments into the soil by placing them in the aerifier holes after a



ATCO

FOR THE GOLF COURSE – and for Life

PARTICULARLY ATCO **GANG MOWERS**

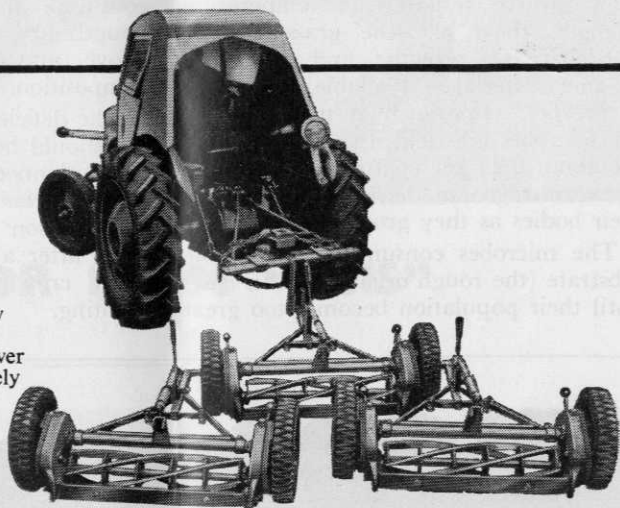
FOR THE FAIRWAYS

There are two models of the new ATCO Gang Mowers available. No. '1' is a general purpose mower and No. '2' designed for extremely heavy duty.

The unique ganging arrangement allows for multiples of one unit upwards making subsequent conversions very economic.

A particularly outstanding feature applied to both models is the totally enclosed all-gear drive. All the gears run in an oil bath which makes for extremely low maintenance in respect of time and cost.

ATCO Gang Mowers are only some of the many machines in the ATCO complete range from the 12" Roller type to the 34" Roller type with a full range of Rotaries, Sidewheels and the Atcoscythe.

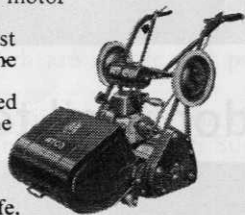


The Triple Gang illustrated costs **£270**

The 20" Special for 'superfine' mowing of greens

This 'self-contained' motor mower has become recognised as the best machine of all for the maintenance of the perfect finish required for the Greens. The specification is complete and will maintain peak performance—for life.

£90



*and perhaps most important
of all* **IMPECCABLE SERVICE**

EVERYWHERE there is an ATCO Engineer attached to an ATCO owned Branch ready to advise on any problem in connection with grass cutting.

* DEMONSTRATIONS OF ANY ATCO CAN BE ARRANGED TO SUIT YOU OR YOUR GREENS COMMITTEE

CHARLES H. PUGH LIMITED
P.O. BOX 256, ATCO WORKS, BIRMINGHAM 9

thorough aeration. If this method does not work, complete renovation may be the only answer.

Why does young grass in many greens show a nitrogen deficiency even when greater rates of N are applied than normally required?

In most instances when this occurs, raw or readily decomposable organic matter was used in the mixture. For the most part, organic matter breakdown is dependent upon soil microbes. While their growth responds to temperature changes, they, like the grass, require nutrients for growth; and when an organic material is available, they seem to prosper. Inasmuch as the bodies of the microbes are rich in proteins (which are about 6.25 per cent nitrogen), much of the nitrogen in the soil is tied up in their bodies as they grow.

The microbes consume the available substrate (the rough organic in this case) until their population becomes too great

for it to support. At that point, death of the older and weaker of the microbes begins to occur until an equilibrium in population is established. It is during the period prior to the establishment of the equilibrium that the deficiency develops; during this time supplemental applications of an inorganic and readily available source of nitrogen are warranted.

While much nitrogen can be tied up in proteins and complex nucleo-proteins, later it will become available for turf consumption as those complex compounds are broken down, as described above, and also through chemical decomposition.

The deficiency should not cause alarm but should be expected and its management planned when such sources of organic matter are utilised. It is for this same reason that farmers must fertilize more after a cover crop than when no cover crop was ploughed in prior to planting.



turf to be proud of

Sutton's know about turf. And they operate a special advisory service for groundsmen and those responsible for the condition of grass. But most important, Sutton's provide the right grass seed for any need, and know which seed is right for your soil, your conditions. Buy your grass seeds, fertilizer, weedkiller and dressings from Sutton's.

don't fail to grow **Sutton's**

grass seeds

Post coupon now for FREE catalogue: To Sutton & Sons Ltd. Reading.

B.G.G.-6

name

address

Please send me your free catalogue of grass seeds and turf specialties, also details of your Grass Advisory Service



A

NEW



DISTRIBUTOR FROM "SISIS"

"SISIS 36"—SUPER COULTAS— Model SCD/36

Messrs. W. Hargreaves & Co. Ltd., manufacturers of the well-known "SISIS" patent Equipment for Turf Management have introduced a new precision Fertiliser and Seed Spreader known as the "SISIS 36" Super Coultas.

The trend of fertiliser manufacturers is to increase the concentration of materials, thus requiring a Spreader which will distribute accurately and evenly in a full width carpet at the very low rates demanded. The Super Coultas has been designed to meet this need with a unique degree of accuracy and operates on the well-known Coultas principle, while incorporating the best design features of the "SISIS" Truspred.

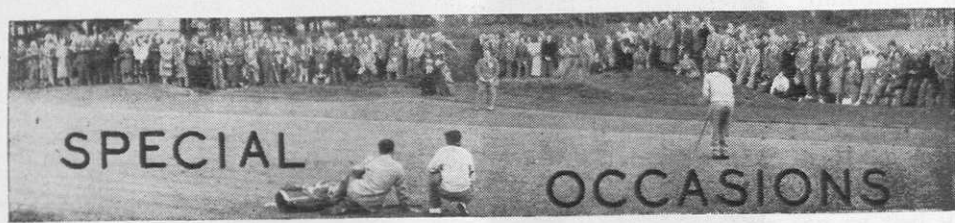
The material is drawn from the extra large capacity hopper by a slow moving, jointless, ribbed, rubber conveyor belt. Final spread is by means of a full width rotary brush. A hand controlled clutch

is fitted to stop and start delivery. A wide range of materials from granular and powder fertiliser, disease and pest controls, grass seed and damp or difficult "clinging" materials can be spread with precision. Spreading rates are controlled by a tilting hopper which varies the aperture between the base of the hopper and the conveyor belt. Rate and adjustment is carried out by finger-tip control dials which are simple and positive.

At the 1962 Exhibition of the National Association of Groundsmen the 36 Super Coultas received the Merit Award as the "Outstanding Production of the Year".

The Super Coultas is designed for pushing or pulling by hand, or can be operated behind the suspension control unit of the "SISIS" Aeromain or Aero-mat.

"SISIS" Model Ref. SCD/36, the Super Coultas sells for £47 10s. 0d. including carriage and packing in crate.



MARCH

- 13th Southern Section, Quiz, Talbot Restaurant, 6-30 p.m.
- 29th Southern Section, Annual Dinner at the Talbot Restaurant, London Wall, E.C.2.

APRIL

- 3rd Welsh Section, Spring Meeting, Clyne Golf Club.
- 4th Midland Section, Spring Tournament, Sutton Coldfield Golf Club.
- 9th Northern Section, Spring Tournament, Woodsome Hall, Huddersfield Golf Club.
- 18th Scottish Golf Greenkeepers' Association (West Section), Annual Spring Competition, Erskine Golf Club.
- 23rd North East Section, Visit to Sports Turf Research Institute.

MAY

- 28th East Midland Section, Spring Tournament, Derby Golf Club.

JUNE

- 11th Midland Section, President's Match, Handsworth.

AUGUST.

- 12th, 13th and 14th Annual General Meeting and Annual Tournament, Royal Birkdale Golf Club.

SEPTEMBER

- 26th Midland Section, Autumn Tournament, Handsworth Golf Club.



<p>AGENTS FOR CROYDEX PLASTIC HOSE & SPRINKLER HOSE WATER TANK CARRIERS GOODENOUGH PUMPS Pumping under all conditions</p>	<p>CLYDE BUILT TRACTOR CABS</p> <div style="border: 1px solid black; padding: 10px; margin: 10px auto; width: 80%;"> <p>A. C. BANKS & CO. 149 COPE HILL, WIMBLEDON, S.W.20 TELEPHONE: WIMBLEDON 1768</p> </div> <p>TRACTORS FOR GOLF COURSES, SPORTS GROUNDS, PARKS, ETC., and ALL EQUIPMENT FOR MAINTENANCE</p>	<p>ALL MAKES OF MOWERS SUPPLIED AND REPAIRED WIRE BASKETS SAWS CIRCULAR CROSS CUTS SHEARS Repairs and Grinding</p>
---	--	--

BY APPOINTMENT TO



HER MAJESTY THE QUEEN

SEEDSMEN
CARTERS TESTED SEEDS LTD.



GROUNDSMEN'S EXHIBITION HURLINGHAM
October 3rd and 4th 1962

At the 1962 Exhibition at Hurlingham organised by the National Association of Groundsmen, Carters comprehensive Exhibit, as illustrated, was again awarded the Highest Honours by the Association for display and lay-out.

For the Production of Fine Turf

Carters Tested Grass Seeds, Special Grass Dressings, Fertilisers, Weedkillers and Wormkillers are used by many of the Leading Golf Clubs and Sports Clubs throughout the country.

We invite you to consult our Sports and Advisory Department on any problem connected with the maintenance of Golf Courses, Lawn Tennis Courts, Cricket Squares, Bowling Greens, Sports Grounds and Recreation Grounds.

The 1963 Edition of our illustrated booklet:—

“Treatment of Golf Courses and Sports Grounds”

free on request

Carters
TESTED SEEDS LTD

**RAYNES PARK,
LONDON, S.W.20**

NEWS AND NOTES

NEW WORMKILLER

Fisons Horticulture Ltd. are marketing a new liquid wormkiller, formulated from chlorinated camphere.

Worms die in the ground and casting should have ceased in four weeks after application. Leatherjackets are killed too. The effects of one application may persist several years, though, presumably, it is still too early to know just how many.

The material comes in 1, 2, 5 and 45 gallon packs, price and area treated being as follows:—

1 gallon £3 10 0 treats 1,210 sq. yds. ($\frac{1}{4}$ acre).

2 gallons £6 15 0 treat 2,420 sq. yds. ($\frac{1}{2}$ acre).

5 gallons £15 12 6 treat 6,050 sq. yds. ($1\frac{1}{4}$ acre).

45 gallons £123 15 0 treat 54,450 sq. yds. ($11\frac{1}{4}$ acres).

Application may be by high volume sprayer or watering can after appropriate dilution in water.

The name (why did nobody think of it before, or did they?) is WORMICIDE.

N.A.G. FIELD DAY, MOTSPUR PARK

This year's Motspur Park Field Day will be held on Wednesday, 3rd April, and Ransomes Sims & Jefferies Ltd. will be there as usual showing and demonstrating a wide selection of their grass cutting machinery.

The 18 in. Auto-Certes machine with its world-wide reputation for giving a superb finish on Golf Greens and other fine grass areas is to be exhibited.

The versatile Multi-Mower will be shown with its choice of cutting heads. The Reelcutter attachment is excellent for cutting banks and grass verges while the 27 in. Rotacutter will tackle grass up to 2 feet tall.

Completing the range of heavy duty mowers will be a selection of Gang

Mowers of which Ransomes were the original manufacturers in this country.

The high-quality 18 in. or 20 in. Marquis will be shown. This is used extensively in the upkeep of ornamental lawns.

Ransomes Rotary Mower, the new 18 in. Typhoon Major with its vacuum-lift cutting blades which swing back on the concave disc if an obstruction is met, should receive special attention. It is powered by a 150 c.c. Villiers 4-stroke engine, fitted with oil pump lubrication in the sump.

Another new model on show will be the new 14 in. Ripper Hand Mower; other hand machines on view will be the 12 in. Conquest, 12 in. Ajax and the 16 in. Certes.

SIGN OF THE TIMES

Golf drives out cricket and lawn tennis at Richmond

The Richmond Athletic Association—who own the Richmond golf driving range—have given the four cricket clubs and lawn tennis clubs notice to quit after this summer to make way for an extension of the driving range.

Mr. D. Wheeler, now secretary of the non-profit-making enterprise, explained: "The cricket clubs hardly pay the expense of maintaining their cricket squares, so we are going downhill financially. With business on the driving range booming, we must do this with reluctance. We plan to increase our 12 tees to 20 and install floodlights so during the summer we can play until midnight. A putting green is also planned. With the increased income we will be able to put up a building for the range with changing facilities".

"The Guardian."

WARNING

. . . It may well be that the spring will bring an exceptional crop of weeds, for frost and snow are great breakers of weed dormancy . . .

Amateur Gardening—9.2.63.