

# The British Golf Greenkeeper



No. 372

May 1976 15p

**MECODEX/CAMBADEX**

# Keep the weeds off the grass

If weed control on turf is your particular headache, then Fisons can offer you two words of comfort. Mecodex<sup>®</sup> and Cambadex<sup>®</sup>.

Over the years Mecodex and Cambadex have proved themselves outstandingly efficient in the selective control of a wide spectrum of weeds.

Just one treatment of Mecodex is sufficient to control the majority of weeds found in fine sports turf, including clover, yarrow and pearlwort.

Cambadex provides treatment for outfield weeds such as plantains and knotgrass, with a formulation exclusive to Fisons.

Both give excellent coverage. Just one gallon is all it takes to treat 1½ acres.

In any programme of fine turf management either Mecodex or Cambadex is the perfect complement to the Hi-Lite<sup>®</sup> range of fertilizers.

Mecodex and Cambadex. There's no better way to get to the root of your weed problem.

**FISONS**  
Fisons Agrochemical Division  
RECREATIONAL &  
INDUSTRIAL DEPARTMENT

Mecodex, Cambadex and Hi-Lite are registered trademarks of Fisons Limited.

The British Golf Greenkeeper



FOUNDED 1912

Published monthly for the benefit of greenkeepers, greenkeeping and the game of golf on behalf of the British Golf Greenkeepers Association

**President:**

**Vice-Presidents:**

Sir William Carr	W. Payne
Gordon Wright	W. Mountain
F. W. Hawtree	C. H. Dix
S. Norgate	F. G. Catchpole
I. G. Nicholls	J. F. R. Wilson
F. V. Southgate	B. C. Jennings
D. B. Hargreaves	D. Craig
P. Marshall	

**Chairman:**

V. W. Smith  
7 Sunningdale Close  
Handsworth Wood  
Birmingham 20

**Vice-Chairman:**

D. Gould  
Langley Park G.C.

**Hon. Secretary & Treasurer:**

W. Heeles  
7 Tentergate Close  
Knaresborough  
Yorks.  
Knaresborough 3851

**Executive Committee:**

Carl Ertherton (President)	
G. Herrington	P. McCarron
V. Smith	J. Simpson
A. A. Cockfield	H. M. Walsh
H. Fry (Jun.)	E. James
D. H. Major	A. Robertshaw

**Hon. Auditors:**

Messrs. Smallfield Rawlins & Co.  
Candlewick House  
116/126 Cannon Street  
London E.C.4

**Hon. Solicitors:**

Henry Dowding, LL.B.  
203-205 High Street  
Orpington

The Association is affiliated to the English and Welsh Golf Unions

# The British Golf Greenkeeper

## CONTENTS

	Page
A NEW GOLF CONCEPT AT FOXHILLS	5
A QUESTION OF COLOUR	13
NEWS	15
STANDING CONFERENCE FOR GOLF GREENKEEPING	22
SECTION NEWS	27
LETTERS	35

*Front Cover Picture*

The Front Cover this month illustrates a Jacobson F133 5 reel gang mower, marketed in the UK by Rolfe's Mini Tractors Ltd, Winchester Hill, Romsey, Hants.

EDITORIAL ADVERTISEMENT AND SUBSCRIPTION OFFICES: Chilberton House, Doods Road, Reigate, Surrey. Telephone: Reigate 43521. SUBSCRIPTION RATE: £3.50 for 12 issues post paid. Published during the first week of each month. All rights reserved. Reproduction of original articles and photographs in whole or in part is prohibited. This Magazine shall not, without the written consent of the publishers first given, be re-sold, lent, hired out, or otherwise disposed of. Contributions and photographs of interest are invited.

LATEST COPY DATE: 1st of month prior to insertion.

TO INSERT A CLASSIFIED ADVERTISEMENT, write to the Advertisement Manager at the above address. The rate is £3.00 per single column inch. Remittance must be sent with order. Please state number of insertions required and write advertisement in block letters. Advertisements will be inserted in the first available issue.

Printed by Kenborne Printers Ltd., Kingston upon Thames, Surrey

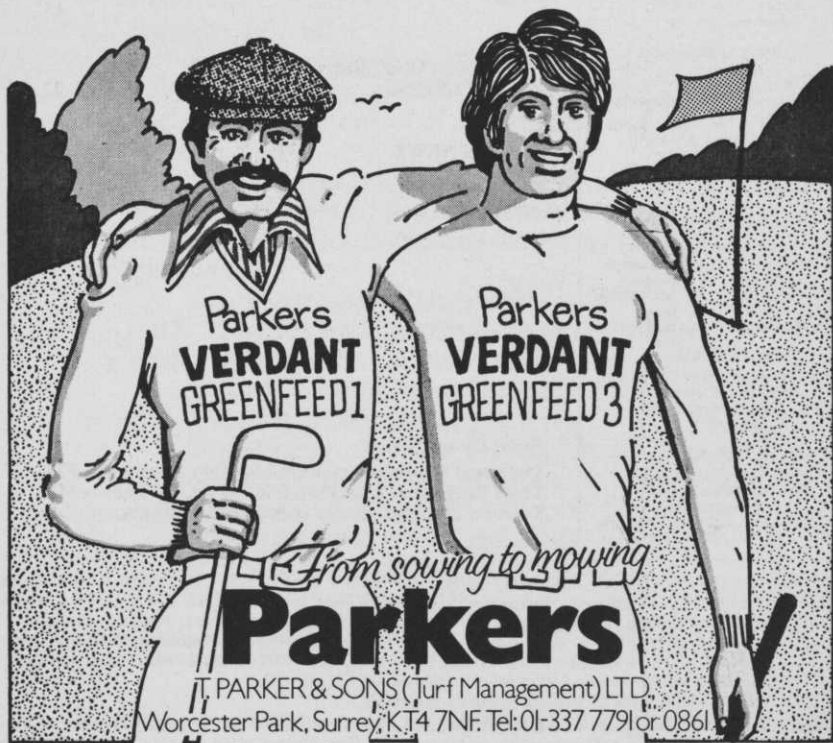
# The Perfect Partnership

VERDANT GREENFEED 1 & 3. These two latest additions to the famous VERDANT range of fertilisers, have been specifically formulated to work together to provide the ideal balance of plant nutrients to keep turf in perfect condition throughout the year.

GREENFEED 1 APPLIED IN THE SPRING AND SUMMER provides that initial boost to enable grass to 'get away' immediately conditions are suitable for growth, and its unique formulation ensures that a strong, healthy growth is maintained throughout the Spring and Summer.

GREENFEED 3 APPLIED IN THE AUTUMN initially continues the growth pattern established by Greenfeed 1, but with its lower Nitrogen and higher Phosphate content encourages ROOT GROWTH instead of top growth, an essential requirement at this time of the year.

SO IF YOU WANT THE GREENEST GRASS AND THE TOUGHEST TURF - PARKERS HAVE THE PERFECT PARTNERSHIP!



# A New Golf Concept at Foxhills

J.K. Campbell

TO leave St. Andrews and join Foxhills might seem to many like reaching the top of the ladder, jumping off, and commencing the ascent to the top all over again.

To move from the oldest and most famous golf links in the world with all the tradition that has grown up with it over the centuries to one of the youngest and most modern golf complexes recently built in Britain, is probably an experience that very few superintendents have shared.

The character and nature of these two golf complexes could not be more different. On the one hand the links at St. Andrews is a flat expanse of natural golfing territory completely devoid of trees and situated on an exposed promontory of land on the edge of the North Sea, and relying on the elements which frequently prevail to make it a severe test of golfing skill.

By contrast, Foxhills is a beautiful 400 acre estate, some 30 miles from London. Set in undulating territory with indigenous heather and pine, lakes and rhododendrons with two magnificently contrasting courses on a bed of Bagshot sand, the base soil of the

famous neighbouring courses, Wentworth and Sunningdale.

The earliest map references to Foxhills is on a map of Surrey published in 1765. On this, and subsequent 18th century maps the area is shown as open heath land. Foxhills became an enclosed estate in the early part of the 19th century. The existing manor house was erected in 1840 and the estate was purchased from the family who owned it by Aer Lingus in January 1973.

One is immediately impressed by the two great 18 hole layouts which were designed by the famous golf course architect, Fred Hawtree. They are laid out in two nine hole loops, and the finishing hole on both courses share the same massive double green in true St. Andrews tradition. The Foxhills courses are named after the town and village in the vicinity - Chertsey and Longcross. The Chertsey course is situated on the east part of the estate and measures 6,890 yards, par 73, with dips and elevated tees and greens; and Longcross, 6,731 yards, par 72, follows the natural contours of the ground through a beautiful woodland setting. Both courses



Send NOW for FREE  
'GREENKEEPING' Catalogue to  
CANNOCK FERTILISERS LTD.,  
Cannock, Staffs., WST1 3LW.

*Seeds & Fertilisers*  
provide an ideal turf  
for every sport and recreational purpose

# WHERE YOU SEE ANY OF THESE IN TURF...



## USE

# SUPERTOX 30

'Supertox' 30 controls one of the widest ranges of weeds infecting established turf. There's no need for several different products – a single spray application will deal with *all* the problem weeds shown above! (If the infestation is dense, another application may be necessary after four to six weeks.)

### Application rates

Standard rate: 11.2 litres per hectare (8 pints per acre)  
 Dense infestations: 17 litres per hectare (12 pints per acre)  
 Repeat treatments: 8.5 litres per hectare (6 pints per acre)  
 Supplied in tins of 1 gallon and drums of 5 gallons.

'Supertox' is a trade mark of May & Baker Ltd Dagenham Essex RM10 7XS  
 Telephone 01-592 3060 ext 339.

'Supertox' 30 turfs out the weeds

To May & Baker Ltd Dagenham Essex RM10 7XS  
 Please send me full details of 'Supertox' 30 and other May & Baker horticultural products

Name .....

Address .....



**M&B** May & Baker

A member of the Rhône-Poulenc Group of Companies



HA 5656

have many exciting features to test the skill and retain the interest of every player, whatever his handicap.

Although permanent memberships are limited, the policy of "Pay-as-you-play" is the basic operating principle for both courses. All golfers are welcome to play on payment of a green fee, both during the week and at weekends. The emphasis is on catering for the many thriving golf societies in and around London.

The golf courses and the clubhouse comprise the first phase of the total Foxhills complex which will ultimately include a country club, leisure centre, and residential accommodation for visitors. The existing 19th century manor house is being retained and is an integral part of the overall development.

The concept for golf at Foxhills is unusual and pioneering in nature. Of the 1,500 or so golf courses in Britain, about 90% are members clubs, run for the benefit of the membership and not for purely commercial considerations. The remainder are public courses, and the operation is based on the payment of green fees for every occasion on which the golfer plays, although this

does not preclude a season ticket arrangement.

Public courses are generally owned and operated by municipal authorities, have a high level of play, charge low fees and with notable exceptions, are not of a very high standard. A feature of public courses is very heavy demand at modest charges but no substantial evidence exists to suggest that the same demand will be forthcoming if top prices are charged for a round of golf.

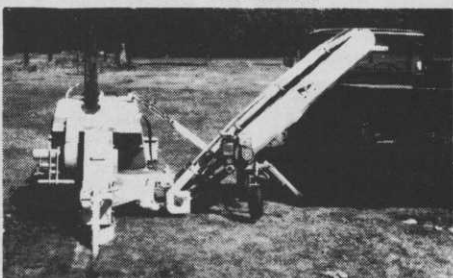
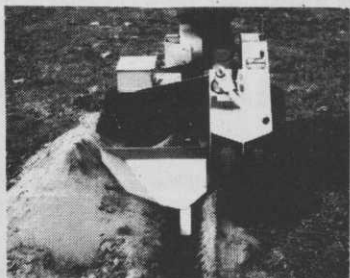
The objective at Foxhills is to create a demand for top-class golfing facilities at a quality price on the reputation achieved by the high standard of the courses and other amenities.

In dealing with promotion, the initial objective of the marketing operation for Foxhills was to increase awareness in as wide a section of the golfing public as possible. Every opportunity was taken to interest local and national media in Foxhills, during the pre-opening period, at the launch, and while in operation. Press releases incorporating up-to-date information on course progress and the appointments, was combined with local and golf press advertising to build up a full awareness of the project.

**A line up of Staff and equipment at Foxhills**



# DRAIN or IRRIGATE WITH A SCOOP TRENCHER



Whether draining or irrigating your costs and reinstatement must be kept to a minimum.

Because our machines are simple to operate and leave grassed areas virtually undamaged they are popular with clubs who like to D.I.Y.

Special soil conveyors and sand slitting booms are available for both our rubber tyred and tracked machines. We also operate a Self Drive Hire Scheme throughout the country.

Write or telephone for details to:

**A. F. TRENCHERS LTD.**

Gosbecks Road, Colchester CO2 9JS

Tel: (STD 0206) 44411

# RELF & KENDALL

## OF CROYDON AND BARNET

With pleasure announce that they hold the greatest concentration of lawn mower spares and lawn mower engine spares in the country

**ENORMOUS STOCKS OF RANSOMES SPARE PARTS**

**RANSOMES**

Also ASPERA, B.S.A.,  
BRIGGS & STRATTON,  
DENNIS, J.A.P., ROTAX,  
VICTA, VILLIERS

Service Exchange items such as CUTTING CYLINDERS — MAGNETOS  
OUR FLEET OF VANS IS OCCUPIED DAILY IN MAINTAINING OUR  
EXPRESS SPARES DELIVERY SERVICE

Telephone your  
immediate requirements to



**RELF & KENDALL**

406 BRIGHTON ROAD, SOUTH CROYDON,  
SURREY CR2 6XX Tel (01) 688 0578

16a PLANTAGENET ROAD, NEW BARNET,  
HERTS. Tel (01) 449 8228

We stock a comprehensive range of domestic and professional  
machinery. Ask for a demonstration on YOUR ground



In the early stages, the main method of communication with the individual market was by advertising and public relations outlets. At the same time, contact was made with other establishments such as hotels, and special promotions were used via other clubs to capture the interested market.

In the medium and long term there is heavy dependence on repeat business with the aim of increasing the frequency of play as well as attracting a constant flow of new players to the Club.

About two thirds of the land earmarked for the layout of the two courses was densely wooded and massive site clearance operations to carve out fairways from soil and woodland so thick as to be impenetrable by foot, had to be undertaken. In all, some 150 acres were cleared on both courses. All greens were constructed and shaped to soil formation and contours, fully drained and stone and sand drainage layers were introduced. Specially mixed compost was transported to greens to be spread, cultivated and seeded. At strategic points on both courses the creation of seven artificial lakes was undertaken. Each lake was prepared and lined with polythene to ensure long term stability. All fairways were fully drained with a massive clay tile drainage system (approx. 35 miles) and a large ditching programme to facilitate movement of water, through site. The basic completion of golf course construction for all 36 holes was achieved within 16 months — quite a feat bearing in mind the extent of the contract, especially the clearance works.

Many problems arose over soil conditions as many areas of running sand, iron clay seams and a multitude of natural springs became evident. These caused considerable surface water problems, which were eventually overcome. They also made construction work by machine quite hazardous. Unusually wet weather was experienced and this resulted in poor ground conditions for long periods during the construction work.

## Quantities

Clearance for fairways, approximately 150 acres. Quantity of earth movement 140,000 cubic yards. Fairway and green drainage 50,000 yards of clay tiles. Two acres of artificial lakes. Ditching 3 miles.

## Irrigation

A fully automatic pop-up sprinkler system for 36 greens and tees and the approaches to greens has been installed using Weathermatic Equipment. The water for the system is drawn from domestic mains supply and is conveyed via 3" pipe to a 100,000 gallon butyl rubber lines reservoir located on the highest point of the course. Over 10 miles of irrigation pipe have been installed.

## Grass Seed Mixtures

### Greens

8 parts OECD Certified Highlight  
Chewings Fescue  
2 parts OECD Certified Highland  
Brown-top Bent

Sowing Rate: 1½ ozs per sq. yd.

### Tees

40% OECD Certified Highlight Chew-  
ings Fescue  
40% British „ Aberystwyth S.59  
Creeping Red  
Fescue  
20% OECD „ Highland Brown-  
top Bent

Sowing Rate: 1½ ozs per sq. yd.

### Fairways

35% OECD Certified Fylking Smooth-  
stalked Meadow Grass  
30% OECD „ Highlight Chewings  
Fescue  
25% British „ Aberystwyth S.59  
Creeping Red Fes-  
cue  
10% OECD „ Highland Brown-  
top Bent

Sowing Rate: 4 cwts per acre.

### Rough

20% British Certified Aberystwyth S.23  
Perennial Ryegrass  
35% OECD „ Fylking Smooth-  
stalked Meadow  
Grass

# WE'VE GOT A GREAT REPUTATION TO MAINTAIN.

If you're responsible for maintaining turf, you already know Jacobsen turf care equipment and the high reputation they enjoy amongst groundsmen all over the world.

You may *not* know that Jacobsen products are available from a national network of Main Distributors and Dealers throughout the U.K. They carry all the stocks you need of essential spares, and they offer a highly qualified technical back-up service. They, too, are maintaining our reputation.

**The Commercial 60** is one of the hardest

working professionals in the Jacobsen range. The 19 h.p. engine powers a 60" rotary cutter which will deal with the toughest grass areas - level, or lumpy or steeply sloping. The finish on the turf is perfect!



## Jacobsen main distributors

**CAMBRIDGESHIRE**  
**NORTHAMPTONSHIRE**  
**BEDFORDSHIRE**  
Turf Equipment Services Ltd  
Saffron Walden 079 984 303

**CUMBRIA**  
**NORTHUMBERLAND**  
**DURHAM CLEVELAND**  
**NORTH YORKSHIRE**  
Fewsters Agricultural Services Ltd  
Hexham 3511  
Darlington 67554

**LANCASHIRE**  
**WEST AND SOUTH**  
**YORKSHIRE**  
**CHESHIRE**  
**GREATER MANCHESTER**  
**NOTTINGHAMSHIRE**  
**DERBYSHIRE**  
Fearnco Ltd  
Sheffield 074 15 2181

**SCOTLAND**  
A. & J. Bowen & Co. Ltd  
Glenrothes 758266

**ESSEX KENT**  
**EAST SUSSEX**  
**EAST LONDON**  
W. Grant Currie Ltd  
Epping 73780  
Brighton 64433

**HUMBERSIDE**  
**LINCOLNSHIRE**  
**LEICESTERSHIRE**  
Achurch & Sons Ltd  
Horncastle 3411  
Louth 2304/5  
Woodhall Spa 52141  
**BUCKINGHAMSHIRE**  
**OXFORDSHIRE**  
**BERKSHIRE SURREY**  
John Wilder (Agricultural) Ltd  
Wallingford 36636  
Reading 53204  
Bracknell 20458

**CORNWALL DEVON**  
**SOMERSET AVON**  
**WILTSHIRE GWENT**  
**GLAMORGAN**  
**GLOUCESTERSHIRE**  
Kellands Ltd  
Bridgwater 8111  
Bath 858288

**NORFOLK**  
**SUFFOLK**  
John Riches (Agricultural) Ltd  
Norwich 56155  
Wrentham 285  
Melton 2801  
Sculthorpe 2333

**WALES**  
**STAFFORDSHIRE**  
**WARWICKSHIRE**  
**WEST MIDLANDS**  
**SHROPSHIRE**  
**HEREFORDSHIRE**  
**WORCESTERSHIRE**  
Kings Heath Mowers Ltd  
Birmingham 021 444 2746  
Stoke-on-Trent 0782 23431  
**DORSET**  
**HAMPSHIRE**  
**WEST SUSSEX**  
B. A. Rolfe & Sons Ltd  
Romsey 513185

# JACOBSEN

SOLE U.K. CONCESSIONAIRES  
Rolfe's International Turf Equipment Winchester Hill,  
Romsey Hampshire. Romsey 513185

35% OECD   ,,   Highlight Chewings  
Fescue  
10% OECD   ,,   Highland Brown-  
top Bent  
Sowing Rate: 2 cwts per acre.

#### Soil Amerlioration

#### Greens

Soil mixture comprising by volume—  
1 part Soil from site  
3 parts Approved sand  
1 part Approved peat

#### Tees

(per 100 sq. yds. of surface)  
7½ tons Approved Sand (P.C.)  
1 ton Approved Peat (P.C.)

#### Approaches

(per 25 yds. x 10 yds. at each Green  
entrance)

15 Tons Approved Sand  
2 Tons Approved Peat

In the early stages when many trees, shrubs and ground cover were removed, there seemed to be for a period a complete absence of any form of wild life on the estate. Now it is apparent that many creatures and birds are returning to redress the balance of nature. Canada geese have already moved in and taken advantage of the peace and serenity of the lakes as though they had been there from the beginning of time.

There are 132 bunkers on the Foxhills courses and they have been artificially constructed so that their contours blend with the character of the ground in relation to the scenery as a background to obtain a harmonious and satisfactory effect. Such results are only achieved by close co-operation between architect and contractor.

Every course manager will confirm that it is no easy matter to find experienced greenkeeping staff for there is a shortage of trained men in this profession. One of the first assignments was to recruit the necessary number of greenkeeping staff to fill the vacancies. For two 18 hole courses this seemed no easy matter. However, men of the right calibre and experience were attracted to some extent by advance publicity

on the new project. Generous terms of service and a wage scale in keeping with that laid down by the British Golf Greenkeepers Association induced them to join the Club. An additional incentive to those seeking employment was the prospect of working with the very latest sophisticated equipment on which more than £30,000 was spent to maintain the courses.

Soft ground conditions brought about by heavy rain during the autumn and winter of last year delayed one of the major operations until the final stages. For the task of filling bunkers

**Mr. John K. Campbell, Course Manager  
Foxhills Golf & Country Club.**



with sand it was vitally important to have firm, dry ground. Routes were carefully plotted for heavy sand lorries around the perimeter of the playing areas to avoid excessive damage to turf. Where bunkers were situated in awkward places around the edges of greens, the sand was stockpiled at a convenient point for transport by tractor and trailer in lighter loads.

Finally, after months of contemplating a lunar landscape of cavernous empty bunkers, the sanding operation appeared to bring about a transformation — and a golf course emerged, proudly displaying all its little islands of sand among a sea of green fairways.

Completion of this task set the final seal of authority on the course as an inviting test of golf. The pools of golden sand loom menacingly to the inexperienced player, while the expert plots his way by using the bunkers as a landmark to frame his route to the green.

The birth of a new golf complex must always be good news for those who are enthusiasts of the game. Watching the course being shaped from a tract of virgin land through all the stages of construction is a unique experience shared only by a dedicated body of experienced men who are the specialists in this particular form of landscaping peculiar to golf. It must be the dream of every designer that his course will achieve championship standard eventually in the future.

The project at Foxhills has all the potential ingredients to make it a golfers' paradise, and under the skilled guidance of its famous architect everything possible has been done to make it a first-class test of golf for players of every calibre. The ambitions for the future is that one day it will host a major golf tournament, and plans are being made to have all the necessary amenities when the courses have reached the desired state of maturity.

**RAIN BIRD®**  
reigns supreme  
(conventional or automatic)

Now available in Scotland from:  
Rainwell (Irrigation) Ltd.  
Cunningham Road, Springkerse  
Stirling FK7 7SL Tel. Stirling 2141

Golf Courses  
Race Courses  
Parks  
Playing Fields  
Bowling Greens  
Tennis Courts  
etc.

In Palm Springs 32 out of 33 golf courses chose Rain Bird equipment for their irrigation systems. 40 years of experience in the design and development of sprinklers combined with modern technology and a high standard of quality control have established Rain Bird as the largest manufacturers of quality impact sprinklers and other irrigation equipment.

For full details of the best in turf irrigation contact our officially appointed area distributors: —  
Ian Maiden, Farrods of Ripon Ltd., Dallamires Lane, Ripon, Yorks. Tel: Ripon 4455  
Gerry Wilkins, Rainbow Irrigation, Sussex House, 23 Cuckfield Road, Hurstpierpoint, Sussex,  
Tel: Hurstpierpoint (0273) 832888

**ptc** or the Sole U.K. Distributors: —  
Irrigation Division, Sterling Works, Bath Road, Aldermaston, Berks. Tel: Woolhampton 2346.

## A QUESTION OF COLOUR

THE course is over some hundreds of acres of pasture land. The land is undulating and 'in good heart', which means that having driven at the direction post on the sky-line and seen the ball deviate by a foot or two in its flight the player hands his driver to his caddy, takes out a niblick, and goes forward to search the luxurious vegetation which lines the fairways. A quarry or two add further perils to the player pursuing uncharted ways, a copse here and there, sombrely obtrusive, absorbs ball after ball with rattling echoes of derision, and impenetrable boundary hedges mean stroke, distance, and ball.

Time was in the early days when the founders and original members thought a day's golf on their own course very good fun. They brought packets of sandwiches for lunch, and Joe the green-keeper and staff, kept a stock of bottled beer in the shanty. The greens one could see because they were kept cut shorter than the fairways hewed through the rough. Besides, they had white calico flags on canes stuck in the holes.

But with an ever-growing membership the old order passed; new members brought new ideas; sub-committees to deal with this and that was formed; progress and improvements saw large tracts of 'ground under repair' in the fairways, temporary greens continually in use, and, in fact all the disgruntling features attendant upon a course being 'brought up to modern standards'. And the committees, as is the way of committees, served their allotted periods and were replaced by new committees with entirely divergent views from those of their predecessors, and though the work went on apace the progress of modernisation often marked time with its back to the goal.

But the real battlefields of scientific shock tactics were the greens. Old features disappeared, new bunkers opened up, agendas frothed and bubbled in the heat of controversies; but, nourished or starved, watered or top-dressed, the greens remained 'in good heart' — except where various fertilizers had left bare patches — flaunting their patchwork coverings of verdant hues: yarrow, clover, pearlwort, the occasional plantain appearing, it would seem, in a night; buttercups and daisies in season, and here and there some grass.

The course was on the outskirts of a university town and in due time there grew up two strong factions, the town and the university staff, and at a time when the war of the greens was in its bitterest phase there were elected to the committee two professors of science. And they listened in silence for a while as the floods of eloquence, flavoured with vituperation and fertilizers, swirled round the room. When for a moment the floods were stilled, one of them spoke:

"You've only got to render the soil acid", he said, and turning to his colleague he asked: "Don't you think so B?"

"I am not altogether in agreement with you", replied B.

And for the next hour or so the rest of the committee sat silent as the two new members fell upon each other with all the vehemence that had marked the discussions before their advent. They talked of acid intoxication of the greens by avoiding lime, nitrate of soda, and all the substances that tend to produce alkalinity.

In sonorous phrases jewelled with formulae they discovered *Plantago lanceolata* or *Sagina procumbens* in the velvet carpets promised by rival treat-

ments. Of pH or hydrogen ion concentration they argued, of sulphates of ammonia; of acid and amide-plants, which depend upon their mechanisms for assisting the toxicity of absorbed ammonia. They sprayed each other with quotations from Boussingault, Prianischnikow, and Butkewich; paragraphs from *Biochemische Zeitschrift* and *Soil Conditions and Plant Growth* flowed from them as water from the hoses on the greens they were discussing. When the chairman came up for the third time they were hard at it about the detoxication of absorbed ammonia.

"That reminds me", he said, and, banging his gavel, declared a ten-minute truce.

When the meeting reassembled it was decided by a bewildering majority that Professor A should treat the first nine greens and Professor B the last nine, according to the manner of their several beliefs.

For a while the greens, with their spring growths, appeared much as usual, then slowly, but surely, the first nine became tinged with yellow, which grew in radiance till June saw nine dazzling gamboge patches. But the last nine were a little behind with their metamorphosis, for, adopting blues as their spring mode, they finally saw the summer through in a striking cobalt.

"Looks like a railway poster", said the professional moodily going into his shop and shutting the door. And there were indeed, times when few would have been surprised to see heliotrope men playing with crimson clubs in the style of the more lurid hoarding decorations. Colonel Boreham-Steadfast quaveringly declares that he actually found himself in a bunker of bold check design, with two raving Chinamen on all fours. He'll tell you, if you like or if you don't, all about it everyday.

The astonished members became violently partisan. The whole club was split up into 'yellows', 'blues', or 'scrap the lots'. Harassed committee - men played furtive rounds in the early mor-

nings or gathering dusk to avoid the unanswerable cross-questionings to which they were subjected, and the secretary worked in secret in his bedroom, leaving a vague notice on his office door: 'Back in half an hour'.

Only the two scientists stuck unflinchingly to their witchcraft, outcasts, but happy in the confident knowledge that the other was wrong and ignoring the factions who urged them to turn the rough to heather and the elms to pines.

Then gradually the dazzling creations which had so gaily flowered died away, and by the time the gentle spring's ethereal mildness had set the new year clothing itself the greens were greens.

An article written by Peter Lawless which subsequently appeared in the *Morning Post* 30:11:33.

It seems that in his wisdom man only tampers with nature. Barring the misfortune of having two eminent scientists on the green committee has the role of the greenkeeper really altered so dramatically over the last forty odd years?

*A Northern Section Contribution.*

## Sports Ground Maintenance equipment for HIRE

**RYAN** Turf Cutters, Greensaire  
Aerators, Powerake.

SISIS Auto Outfield Spiker, Auto  
Turfman, Slitter, Fertiliser  
Spreader, levelling blade, roller,  
tilther rake.

Rotary Mowers and Flail mowers  
Tractors, trailers, gang mowers.

All types of reconditioned  
machines for sale

Maintenance and service in our  
well equipped workshop.

**T. & G. FOX  
HORTICULTURAL LTD.**

Horse Shoe Farm,  
Castle Hill, Bredbury,  
Stockport.

Tel: 061-430 5828/2986

# NEWS

International with his intensive knowledge of turf care.

Further details are available from Mr. C.M. Bakhurst, Managing Director V.E.B. International Ltd., Stags End House, Gaddesden Row, Hemel Hempstead, Herts.

## V.E.B. INTERNATIONAL LTD.

V.E.B. International Limited, who recently completed the construction of a 27 hole golf complex in the south of France at St. Cyprien, have been awarded a three year Maintenance Contract to look after the new course. The turf consultant during this period will be Donald Harradine, the well known international golf course architect, who works closely in association with the V.E.B. Group outside the U.K., and the Head Greenkeeper that has been appointed is Mr. Leslie Beetham, previously Golf Manager at the Corfu Golf and Country Club.

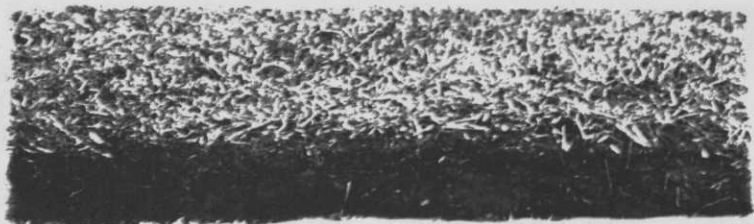
Mr. Beetham is a highly experienced greenkeeper, having previously been Head Greenkeeper at the West Bradford Golf Club, the Fixby Golf Club and Royal Lytham & St. Annes Golf Club. During his career he has been responsible for course preparation for the British Open championship, and many other major golf course events, and he strengthens the overseas team of V.E.B.

Mr. Leslie Beetham



## ANNUAL TOURNAMENT

It was agreed at a recent meeting of the Executive Committee that the handicap limit for the Annual Tournament be 18 maximum. This does not preclude higher handicap golfers from entering but they must play off 18.

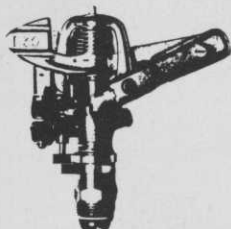


# cameron carpet

(one acre or a hundred!)

The key to Cameron is *quality* of turf not quantity. Size is no problem. A Cameron automatic pop-up system will cope however big the area. Cameron portable systems handle an acre or less. Either way your turf will be terrific.

## one acre



### Here are the details.

Ideal for smaller turf areas (and they can be well below an acre) is the complete range of Cameron Portable Sprinklers. This extends from a circle or part-circle sprinkler and the sophisticated rain train self travelling sprinkler providing rectangular coverage. As with much bigger Cameron installations the result is fine turf 'texturised' as the experts call it — a turf that is uniquely live, dense, and crisp.

## one hundred acres

Cameron pop-up sprinkler systems cover the big spaces. They are designed to compete and beat. Real winners in the irrigation game. Watch them perform. Unnoticed till needed, the sprinkler heads are activated by water pressure. Simple but superb.

Circles or sectors, the jet will spray the pattern you desire and can be set to operate according to a pre-set cycle. That's truly *automated* watering.

Try the finger-tip test. It's the same 'texturised' feeling that you always get with the Cameron connection.



Please send me full details of the labour-saving, cost-saving, turf-improving Cameron Systems. (Fully illustrated brochure with technical specifications).

# cameron

## *texturise turf*

So, pop-up or portable, tick off the performance points. Fine turf quality; savings in time, labour and cost; professional equipment that enhances the status of the place where it is used. A name backed by a multi-national concern in the field of irrigation.

**Cameron Irrigation Company Limited,**  
Harwood Industrial Estate, Littlehampton,  
Sussex BN17 5BR  
Telephone: Littlehampton 3985 (5 lines)

BGG/5/76 A division of Reed International





## **31st INTERNATIONAL GROUNDSMEN'S EXHIBITION AT MOTSPUR PARK**

THE Chairman of the Sports Council, Sir Robin Brook, C.M.G., O.B.E., will perform the official opening ceremony at the 31st International Groundsmen's Exhibition at 12 noon on Tuesday, 7th September, 1976, at the University of London's Athletic Ground, Motspur Park, New Malden, Surrey.

The 31st International Groundsmen's Exhibition runs from the 7th to 9th September inclusive, opening times from 10 a.m. to 6 p.m. on 7th and 8th, and from 10 a.m. to 5 p.m. on 9th September.

**JAMES R. WALSBY** Public Relations,  
Cophthall House,  
St. Ives Road,  
Maidenhead, Berks.  
Tel: Maidenhead 29498.

## **EDUCATIONAL TRIP TO HOLLAND 1976 - for GREENKEEPERS AND GROUNDSMEN.**

### **SATURDAY, SEPTEMBER 18th**

THE party will leave the Corporation Street car park, Rugby at 3.30 p.m. this is quite a safe car park under frequent Police patrol and is free, the coach will stop at Cambridge for a cup of tea etc., on the way to Harwich where the Party sail on the "SS Juliana" at 10 p.m.

### **SUNDAY, SEPTEMBER 19th**

The Party arrive at their destination the "HOTEL PAVILION" in Rehenen for breakfast at 9 a.m., and hope to attend the service to the Men of Arnhem at the Oosterbech cemetery later in the morning, then afterwards the Party has a cruise on the River Rhine to Zutphen, on returning the coach will return to the hotel for dinner. Remainder of evening free.

### **MONDAY, SEPTEMBER 20th**

The Party are to be welcomed and take coffee at the Pappendal Sports Centrum and grass and Drisplay trials. Lunch will be taken and the ladies will go into Oosterbech for the afternoon, the evening in Amsterdam including a Canal tour and 4 hours free in the city.

### **TUESDAY, SEPTEMBER 21st**

The Party are guests of Mommersteeg International Plant Breeders. Welcome at 10 a.m. with coffee, ladies in the afternoon to the town of S'Hertogenbosch to see the shops, men to join up later for at least one hours shopping time. The Party will, after visiting S'Hertogenbosch proceed to the Hook for the return journey on the "SS Edmund" to Harwich.

The cost of the trip will be £45. A deposit of £5 per person should be paid by the 8th May, made payable to:

**Mr. K. Spiby,**  
31a Porthill Road,  
SHREWSBURY,  
Salop. SY3 8SA.  
Telephone: Shrewsbury 4582.

### **ELVIN PENNANTS LTD.**

ELVIN Pennants Limited, of Spa Road, Hockley would like to make it clear to their customers and friends within the trade that, despite rumours that have been circulated, they are still in business, in just as big a way as ever. These rumours are those which circulate through every trade at sometime or another but are completely unfounded. It is true to say that business is just as good as ever, thanks to the continued efforts of our Colleagues, Mr. John Miller and our New Representative Mr. Andrew Wallace in the Midlands, to whom all credit is due.

We still have catalogues and up to date Price Lists, for circulation, which will be forwarded by return, to any prospective Clients that care to ask.



# Greenkeeper lets the grass grow under their feet all year.

## Greenkeeper® 1 and 2.

Whatever the wear and tear on your fine turf, Greenkeeper 1 and Greenkeeper 2 provide the ideal treatment, with fast action and long-lasting effects.

Greenkeeper 1 and Greenkeeper 2 are part of the unique Hi-lite range of products. They are lightweight, so there's less to carry around, and flow smoothly and evenly. They also reduce the danger of scorching.

Greenkeeper 1 contains the correct balance of nutrients for Autumn and Winter application; Greenkeeper 2 for Spring and Summer.

Both are suitable for all types of fine turf and encourage your grass without causing excessive growth at the end of the season.

Conveniently packed in 62½lb. poly-bags, they are ideal for both indoor and outdoor storage.

Greenkeeper 1 and Greenkeeper 2. The ideal treatment for your fine turf—all year round.

**FISONS**  
Fisons Agrochemical Division

© Greenkeeper is a registered trademark of Fisons Limited.

The British Golf Greenkeeper

## NEW UK DISTRIBUTION NETWORK FOR JACOBSEN

ROLFE'S International Turf Equipment of Romsey, Hampshire, have appointed ten main distributors in the UK to form a new national network for Jacobsen turf equipment for which Rolfe's are sole UK concessionaires.

The main distributors will operate on a regional basis and will appoint various dealers in their areas. The distributors will be responsible for demonstrations, sales, spares and service of all Jacobsen machinery. In addition, distributors will provide full operator training, maintenance and service instruction. All the distributors are established suppliers of agricultural and horticultural equipment and, as part of their agreement with Rolfe's are all committed to carry Jacobsen spares in stock.

Jacobsen equipment maintains more golf courses throughout the world than any other make. The company can claim a number of industry firsts, including production of the first golf course powered greens mower, the first riding attachment for power mowers and the first hydraulic triplex greens mowers.

Jacobsen manufacture a wide range of specialised mowers with cutting swaths from 18 inches to 21 feet. The product range includes: reels, rotaries, riding mowers, snow throwers, mowing tractors, trailer type gang mowers and an extensive line of heavy duty commercial turf maintenance equipment.

Main distributors appointed by Rolfe's are:

John Wilder of Wallingford, Kellands of Bridgwater, Kings Heath Mowers of Birmingham, Turf Equipment Services of Saffron Walden, John Riches of Norwich, Fearnco of Sheffield, Fewsters Agricultural Services of Hexham, A & J. Bowen of Glenrothes, Achurch & Sons of Horncastle, Grant Currie of Epping and B. A. Rolfe & Sons of Romsey.

Jacobsen turf care equipment is used by golf courses, sports grounds, private parks and local authorities throughout the UK. The Jacobsen Manufacturing Company is a member of the Allegheny Ludlum Industries of Pittsburgh, Pennsylvania, which has an annual sales volume in excess of \$500,000,000.

Further details of local distributors and products available can be obtained from Rolfe's International Turf Equipment, Winchester Hill, Romsey, Hants. SO5 8YY. Telephone: 0794 513185.

Jacobsen F 133 5 reel gang mower.



# THE VERTIRAKES



**T.V.R. (Tractor Vertirake)**  
– Golf course fairways, Municipal  
Parks, Sports pitches.



**P.V.R. (Pedestrian Vertirake)**  
– for Golf greens, Bowling greens,  
Cricket pitches and Tennis courts.

These two machines have been designed to remove all the thatch, thus stimulating recovery and growth of strong healthy grasses. You will find that each machine will clear the difficult dead, matted, fibrous grass that is so often so difficult to get rid of.

We have a machine for every purpose from the small golf green to the largest Municipal playing fields. One great labour saving device we have fitted on our P.V.R. model is the very large glass fibre collecting box which saves an enormous amount of time and energy that would otherwise be wasted in sweeping up afterwards.

Write for full information on Vertirakes to:

**H. PATTISSON & CO. LTD.**

STANMORE HILL WORKS · STANMORE  
MIDDLESEX. Tel: 01-954 4171

**Pattisson**

## PURCHASE OR HIRE FROM HUXLEYS

OVER a hundred people attended Huxley's demonstration of 'Modern Maintenance Machinery for Purchase or Hire' at Alresford Golf Club on 22nd March.

The guests included representatives of Golf Clubs, Local Authorities, Sports Clubs, Hospitals, Parish Councils and Government Departments, and the programme appeared to be of particular interest to everyone.

During the slide lecture in the morning, examples were shown of how customers had saved time and money by hiring machines from Huxleys to cope with seasonal problems. Turf cutting, trenching, sand-slitting and leaf clearing were now jobs that could be completed quickly without employing contract labour. Details were also given of customers who had been able to cut grounds maintenance costs by using modern, high work rate machinery such as the Ransomes Motor 5/3 Hydraulic Mower and the Cushman Turf Care System.

A comprehensive demonstration of the latest 'Cost Cutting Machinery' took place before lunch, and the guests were invited to see a wide range of machines available for purchase or hire in operation during the afternoon.

Huxleys showed that, by considering the use of Hire Purchase, Leasing, Short Term Hire and Contract Hire, customers could afford to use the latest high performance machinery to maintain standards while keeping within their budget. The latest Ransomes Hydraulic Three Gangmower could be Leased for as little as £11 per week, and owners of the Basic Cushman Turf Truckster could hire the Top-Dresser, Sprayer and Quick Aerator from Huxleys when required.

Everyone appeared to find the day both enjoyable and constructive, and Huxleys are already planning a similar event next year, based on a different theme.

**Huxleys have now supplied over forty Ransomes-Hohn Triplex outfits to Golf Clubs throughout London and the Home Counties**



# Standing Conference for Golf Greenkeeping

THE winter tour of the Training Co-ordinators, Mr. & Mrs. G. Richards, has been completed. Every golf club has had the opportunity of being represented at one of the 34 meetings to discuss the new training scheme for golf greenkeeping and in addition Mr. & Mrs. Richards have met head greenkeepers in every section of the B.G.G.A.

The main comments from these discussions were reported to the Standing Conference at a meeting in London on 16th March. The Conference made the following decisions:—

1. That golf should work towards having a qualified service. As an interim measure head greenkeepers will be given the opportunity, if recommended by their clubs, to register as qualified with the Standing Conference.
2. That training courses recognised by the Standing Conference will be started in the autumn 1976 at colleges, and a booklet giving full details will be sent to clubs shortly.
3. That the chairman, Mr. F. Fawcett, should be one of the panel of selectors for the Government sponsored one-year full-time residential course for adults in greenkeeping at Askham Bryan college, York.
4. That experienced assistant greenkeepers should have the opportunity qualifying by examination and that short crash courses be arranged at colleges, where necessary.
5. That the "on course" training should be tested as part of the qualification.
6. That it would be advisable for a training liaison officer to be appointed in each county and a small advisory committee formed to work with each college providing the courses.
7. That when the Training Services Agency has made the specific offer of grant-aid for the training scheme,

details would be conveyed to all clubs.

8. That the Standing Conference could not give guidance to clubs on wages for trainees.
9. That an effort should be made to encourage clubs to support the B.G.G.A., S.G.G.A., or I.G.G.A., especially for their educational value.

## S. H. GOSS & CO.

### WEED CONTROL

### SPECIALISTS

Selective or Total Weed Control  
Grass Growth Retarding  
Brushwood Control  
Aquatic Weeds  
also  
Worm Control  
Fertilisers Applied

Fairoaks,  
Little Warley,  
Hall Lane,  
Brentwood, Essex  
Telephone: Brentwood 216107

## BACK LAPPING

Accurately and efficiently  
on site or in the workshop  
with the

### EASYLAP

for use from 230 volt mains or  
generator and ideal for TORO  
gang mowers. For full details  
and leaflet contact us now!

**ATTERTON & ELLIS LTD.**  
Iron Works, Haverhill, Suffolk

## LONGER LIFE GOLF COURSE ACCESSORIES

ONE man who has a lot to do with the appearance of golf courses all over England and Scotland is 66 years old, Bill Fairley, who has been with Ransomes Scotland (Grass Machinery) Ltd., at Edinborgh over 35 years.

His responsibility is the production of Ransomes well known range of high quality golf course accessories – greens flags and poles, putting cups, tee markers and other equipment.

At the St. Ninians Road premises he set up a small workshop where he used a variety of skills in the manufacture of the accessories – from the casting of polyester resin to make tee markers, to silk screen printing for flags, and a special method of painting flag-poles.

Originally Bill Fairley worked single handed on this but as demand grew for the equipment, which gives an individual and stylish finish to a well-tended course, he needed more assistance and now two others work with him.

Recently the work has been made easier by the introduction of a new vacuum application process which will make tee-plaques and direction and rule signs even longer lasting than before.

The process, for fixing letters and numerals to the signs, is the same as that used by many local authorities for making road traffic signs.

Pre-cut letters are arranged on the plaque, and then the machine evacuates the air, drawing the letters hard onto the surface. Once a full vacuum is reached, heat is applied, which cures the adhesive used, ensuring a positive long life bond between the legend and the sign board.

With this process Ransomes can provide exceptionally hard wearing signs for golf courses or indeed any other use, providing they use the standard plaques which are 5 in. x 7 in., 7 in. x 14 in. or 10 in. x 14 in.

There is no change in price for the signs following the introduction of the

new process so the new type signs represent even better value for money. Release date: 3rd March, 1976.

## GRASS SEEDS FOR SPORTS AND AMENITY TURF

MOMMERSTEEGS' outstanding new perennial ryegrass Grandstand is now available in an exclusive Mommersteeg mixture MM.30.

20% GRANDSTAND Perennial Ryegrass  
 45% STADION Perennial Ryegrass  
 35% NOVORUBRA Creeping Red Fescue

100%

This new turf mixture offers greenkeepers fast establishment, frost and disease resistance, low dense growth, rapid recovery from damage and an outstanding appearance. It also has a low nitrogen requirement and is extremely hard wearing.

Price of the new mixture is £46.20 per 50 kilos with reductions for larger quantities.

As from spring 1976, Mommersteeg mixture MM.24 will contain 5% Pastremo and 5% S.51 instead of Timo, and Mommersteeg mixtures will be available in the following pack sizes:

MM.11	5, 10 and 25 kilos
MM.12	25 kilos
MM.13	25 kilos
MM.14	25 kilos
MM.15	25 kilos
MM.16	10 and 25 kilos
MM.21	25 kilos
MM.22	10 and 25 kilos
MM.23	25 kilos
MM.24	25 kilos
MM.25	25 kilos
MM.26	10 and 25 kilos
MM.30	25 kilos

For further information please contact Richard Frost at Wellingborough, (0933) 680674.



# RANSOMES

## Quick-change artist

The Ransomes-Hahn Tournament Triplex is a remarkable machine — so remarkable that we call it the world's first Greens Management System. The Tournament Triplex is a 12hp vehicle with hydrostatic drive, which powers four separate turf maintaining operations.

Each conversion, from superb greensmowing to utility mowing, to Verti-Cutting, to spiking takes less than a minute — and no spanner!

**Greens Units** A full 67" cut. Each 23", nine-bladed cylinder can be lifted individually.

**Utility Units** Heavy-duty cutting cylinders and bottom blades for approach and tee mowing. Grass catchers provided with all units.

**Verti-cut Units** Patented twin offset blades remove 'thatch', keep greens

in play even in difficult conditions.

**Vibra-Spiker** Now spiking takes even less time than greensmowing. High-frequency vibration penetrates to a depth of 1½" with a minimum of compaction. The combination of this unique quick-change unit feature, full 67" swath for every operation, variable-speed units and individual unit lifts make the Tournament Triplex an investment which no club can ignore.

Your local Distributor is keen to impress you with a demonstration. Give him a call.

See your Ransomes Distributor or write direct to:  
Ransomes Sims & Jefferies Ltd., Ipswich

## Ransomes-Hahn Tournament Triplex

Buy or ask for Leasing details





## THEFTS FROM GOLF CLUBS

NUMEROUS thefts of golf clubs and equipment have occurred within the Surrey Constabulary police area during the first four months of this year. In nearly all cases these offences occurred in the club house or club car parks.

The culprits are adopting two main ploys. One of their methods is to pay the green fees on the pretext of playing a round of golf. Having 'bought' time, the offenders are going to the changing rooms where they then force open the locker doors, removing equipment therefrom. The locker doors are then pushed back into the closed position so as to 'delay discovery'.

The gaining of entry into vehicles left in the car parks and club grounds is another method currently being practised. Doors and car boots are being opened by means of a duplicate key and property left in the car has been stolen.

In a number of instances thefts from parked vehicles have occurred when an advertised event has been in progress at the club house, such as the A.G.M., a bridge party or the Captain's dance.

In addition to ensuring the adequate safeguard of property members are advised to report immediately any suspicious incident to the police.

## UNIVERSAL TRUCK-TRAILER

A VERSATILE load-carrier, designed to be either a two-wheeled tipping trailer, a four-wheeled turntable truck or a dual-purpose "convertible" model, has been introduced by Link-Hampson Ltd., of Newbury, Berks.

Carrying capacity is 10 cwt., on a platform measuring 59 in. x 29½ in. (1.0 metres x 0.75 metres), with 12 in. (0.3 metres) high sides; the tailboard and both sides are hinged for easy loading and unloading, or may be detached altogether if larger objects are carried. Front wheels swivel through more than 180° on the turntable truck, which can be turned within its own length.

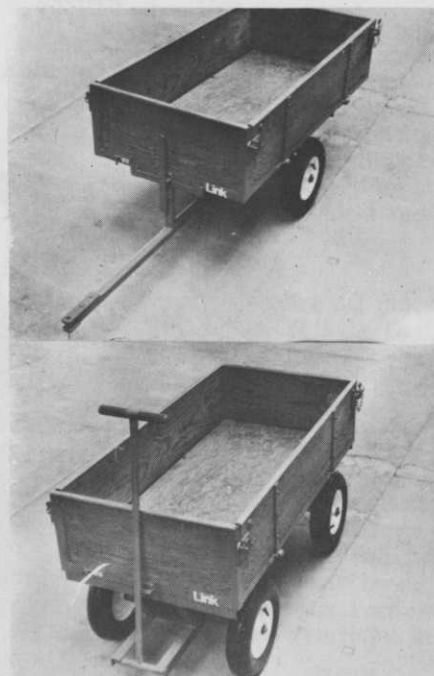
The two-wheeled version has a draw-bar with a jaw of adjustable height to fit most standard mini-tractors, and is tipped simply by pulling a release catch on the front. Conversion into a hand-drawn turntable truck is a simple nut-and-bolt job, said to take only a few minutes.

Strength and weather-resistance are assured by an all-steel frame, undercoated with red oxide and finished in Poppy; treated Malaysian ¾ in. ply bodywork; and metal cappings to protect the tops of the timber panels. The 16 in. wheels are pneumatic-tyred.

Recommended retail prices, exclusive of VAT, are £92.00 for the tipper, £112.00 for the turntable truck; the kit to convert from two wheels to four costs £35.00.

For further information, please contact: Colin Honeybone, Newbury 46656. 539/16276.

**Link-Hampson tipping trailer in convertible to 4-wheeled turn-table truck. Carrying capacity is 10 cwt.**





# RANSOMES

# Hitch up to our fast, new, Mounted Hydraulic 3

Ransomes progressive policy in powered gang mowing takes a further masterful step forward with the new Mounted Hydraulic 3.

It's the really quick answer for cutting most grass areas - especially where they are separated.

The 3 hydraulically power driven cutting units are put into or out of work - by a single lever operated from the tractor seat. When mowing is completed the units are raised for transport, as a continuous action, therefore time spent between each grass area is minimal.

The finish is exactly as required - a wide range of cuts per metre see to that. If the tractor is needed for other tasks, disconnecting the Mounted Hydraulic 3 takes only a few minutes.

The new Mounted Hydraulic 3 has a definite place in your mowing programme. Find out the full story now.

## Outstanding features

Compact, light but robust, all-welded construction.

Quick attachment-detachment from tractor, just a few minutes

Fixed head, six knife cutting units as standard or alternative floating head, eight knife cutting units for golf course fairways

Cutting width of 2.14 metres (7ft)

Transport width of 2.39 metres (7ft 10ins)

Height of cut range: 13mm to 90mm (½ in to 3 ½ ins)

Quick fix mounting for Ford, Massey-Ferguson and other tractors

See your Ransomes distributor or write direct to:—  
Ransomes Sims & Jefferies Ltd., Ipswich.

## Mounted Hydraulic 3

Buy or ask for Leasing details



# SECTION NEWS

## A nationwide round-up of news from the branches



### South Coast Section

*Chairman:*  
E. R. JAMES

*Hon. Secretary:*  
MRS. J. STIMSON  
North Wilts, G.C.  
Devizes.

THERE was a very good attendance at Alresford Golf Club on Tuesday, 2nd March 1976, when members enjoyed the generous hospitality of Huxleys Garden Machinery. The topic of the evening was "Further Thoughts on Hire". Eddie Fox concentrated on aspects of drainage and showed a series of slides illustrating the method used to improve drainage on the 1st green at Alresford using a turf cutter and AF trencher, and he also drew attention to the use that had been made of other machines in experiments to cope with particular drainage problems. Paul Huxley referred to the other machinery which was now included in their Hire Fleet and there were many envious sighs when the various attachments to the basic Cushman turf truckster were shown! Our grateful thanks to "Huxleys" for a very interesting and enjoyable evening.

Many members were given the opportunity to inspect at first hand the work which had been done on the 1st green. On Monday, 22nd March, Huxleys Garden Machinery held a display of their "Modern Maintenance Machinery for Purchase or Hire" at Alresford Golf Club.

A few of our Greenkeepers were also

given the opportunity of another day out when they accepted an invitation from A. Brewer & Co. Ltd., of Salisbury to a Golf Tournament held at High Post Golf Club. Almost eighty representatives from various Golf Clubs and Trade firms took part and it was most unfortunate that the weather that day was diabolical

We welcome to the Section Mr. M.D. Webb of Alton Golf Club and hope that his association with us will be a long and happy one.

### North West Section

*Chairman and Hon. Secretary:*  
H. M. WALSH  
34 Kingsfold Close,  
Broughton,  
Bolton, Lancs.

#### Lectures

OUR sincere thanks to Mr. R. Young of Chipmans Ltd., for the very interesting talk which he gave on the importance of correct drainage. This concluded this winter's series of talks, and my thanks to all the speakers concerned, and to the members who turned up in quite good numbers to give their support.

#### Spring Tournament

Monday, May 17th. Tee off times from 8.15 a.m. at the Hillside Golf Club, Southport. Details in the previous issue of the journal.

#### In Memoriam

It is with deep regret I have to inform members of the sudden passing away of our friend, and fellow greenkeeper, John Pearson, a stalwart member of the Association, and will be greatly missed by his friends in the North West, who extend to Mrs. Pearson and family their deepest sympathy in their sad loss.

# Important announcement from

 **GRAVELY**®

We are proud to announce that Gravely all-gear drive tractors and attachments will be available across Britain exclusively through Toro (UK).

#### **What makes that news to remember?**

The answer's simple. You've now got easy access to the range of quality engineered 2 and 4 wheel tractors and attachments; one of the biggest names world-wide, one of the investments that pay off.

#### **Why did Gravely choose Toro?**

To ensure you prompt product availability *plus* an active after-sales service *plus* a complete parts back-up.

#### **Why do people choose Gravely?**

Plenty of reasons. And maybe the biggest is this . . . Gravely's uniquely simple and reliable transmission system giving instant forward and reverse with no troublesome V belts. It's really reliable and is a joy to work with.

Toro (UK), sole distributors of Gravely products in Britain :

#### **TORO (UK) SALES & SERVICE**

Faverdale West, Faverdale Industrial Estate, Darlington  
Co. Durham DL3 0QG. Telephone : Darlington 55101  
Telex : 587 182

 **GRAVELY**®

---

## Welsh Section

*President:*  
J. BIRD

*Secretary:*  
D. C. OLIVER  
Llywnpia,  
Rhondda,  
Glam.

### Our 1976 Fixtures List:

15th June Southerndown Golf Club  
21st Sept. Swansea Bay Golf Club  
13th Oct. St. Pierre Golf Club

On the 4th March, 1976, Mr. Tom Jones died, who had been the Head Greenkeeper of St. Mellors Golf Club for the past 43 years. We all knew Mr. Jones had been ill for quite some time. He will be sadly missed by all.

## Midlands Section

*Chairman:*  
V. W. SMITH

*Hon. Secretary:*  
A. KITE  
5, Lillington Close,  
Sutton Coldfield,  
West Midlands.

ON Wednesday, 9th March, 1976, at the Sutton Coldfield Golf Club, a lecture was given to the members of the Midland section by Mr. Derek Brown, the Sutton division officer for the Birmingham City Council Recreation and Amenities Dept. The lecture was on the subject of trees. Mr. Brown talked for several hours on what turned out to be a very interesting and absorbing subject. He also answered the questions put to him by the people in attendance. Like myself I am sure, most people present were not aware of the many aspects that could be attributed to even the most common tree.

We would like to offer our most sincere thanks to Mr. Brown for entertaining, and indeed educating us with his lecture. We also offer our thanks to the Sutton Coldfield Golf Club for the use of their facilities, and finally to Bernhard's Rugby Nurseries Ltd., for their invitation to look around their many acres of young trees in the coming autumn.

I would like to remind all the Midland members that your Subs. are due

on the 1st May, 1976, and should be received by the Treasurer Mr. E.V. Thomas, 78 Hillmorton Road, Four Oaks, Sutton Coldfield, W. Midlands, by no later than the last day of May, failure to do so will result in loss of privileges i.e. entering of golf tournaments, receiving of journals etc., also as a result of you failing to pay your subs. on time extra expenses are incurred by the section, expenses that we can ill afford, so PLEASE Pay up, no excuses.

## Southern Section

*Chairman:*  
D. S. GOULD  
Langley Park G.C.  
Beckenham, Kent.

*Hon. Secretary:*  
MRS. D. MAJOR  
36 Tynedale Road,  
Strood Green,  
Betchworth, Surrey.

AT the Annual Dinner at Walton Heath Golf Club on Friday, 26th March, once again a most enjoyable day was had by all. The course — in first class condition, thanks to Fred and his Staff, and the dinner in the evening, our sincere thanks to Mr. T. Stanley and his

## PATTISON IN THE WEST

### DEREK RUSSELL

Handsome, debonaire, confident—some of the words used by him when we said we want to print something about you—actually he is not a bad looking chap in a rugged old fashioned sort of way, two smashing kids and a very charming wife, fond of the country and enjoys meeting people—in fact he is just the man to promote Pattisons new van sales delivery service.

Calling on Golf Clubs from his local centre in the west country Derek is able to offer immediate delivery from the wide range of our equipment carried by his van.

Buy The Best—From The Best—  
Get The Best Service  
H. PATTISON & CO.  
STANMORE, MIDDLESEX  
01-954 4171

# BenSun



## BLUEGRASS (Poa Pratensis)

Formally known as Warren's A-34

**A Smooth Stalked Meadowgrass!**

- RECOVERS QUICKLY FROM INJURY
- Highly disease resistant.
- Thrives in open sunlight and varying soil conditions.
- Withstands short mowing, down to ½ inch.
- Withstands shade (up to 65%).
- Produces a dense green sward of turf.

# BenSun

**BLUEGRASS SEED  
costs less**

**1 Pound Sows  
2,000 Sq. Ft.**

(Over 1,000 seeds per sq. ft.)

**HURST GUNSON  
COOPER TABER LTD.  
Witham, Essex CM8 2DX  
PHONE: Witham 516600  
(SPD Code 0376)**

Catering Staff and of course Mr. Jobson.

82 competitors played 18 holes of golf during the afternoon, the results being as follows:

- |     |                    |   |               |
|-----|--------------------|---|---------------|
| 1st | 1st with 43 points | — | B. Streeter   |
|     |                    |   | G. Channer.   |
| 2nd | 2nd with 42 points | — | G. Brown      |
|     |                    |   | E. Stillwell. |
| 3rd | 3rd with 38 points | — | J. Newman     |
|     |                    |   | C. Mitchell.  |

Our thanks go to Mr. Holloway, Captain of Walton Heath who proposed the toast to the B.G.G.A.

It was a pleasure to have in our company, the Chairman of the Association, Mr. Vic Smith who spoke on behalf of the Association.

Our President, Mr. Jock Glass proposed toast to the guests and our further thanks to Mr. Ted Ray for his reply.

The guests included Mr. Dix, Mr. Michael Bonallack, Mr. Lynde, Capt. of the London Golf Captains, our Editor Mr. D.B. Hopkins and two of our oldest members Mr. Bert Dash and Mr. Stan Morton.

Our thanks also goes to G. Nurton, J. Field and B. Diddams for their work behind the scenes and also for the donations for the raffle given by members of the Trade.

Mr. B. Ryan once again made a great success of the Benevolent Fund Raffle — thank you Bonzo.

Our March lecture was given by Mr. Palin of Suttons Seeds Ltd.

We had quite a good turnout for what proved an interesting evening. Amongst the problems of turf culture discussed were the best methods of fibre control & eventual eradication. Mr. Palin stressed the difference between fibre and thatch, fibre being undecomposed grass roots and leaves, thatch the entanglement of growing tissue. In his opinion, it is more important to slitt with the close pattern type of aerators e.g. HAHN SPIKERS) as a weekly job than to scarify turf when fibre control is

desired, where as scarification is more beneficial in reducing thatch. The lecture continued with Mr. Palin explaining what soil is derived from and explaining the differences between what is termed top soil and sub soil.

Our thanks for most enjoyable evening.

## Sheffield Section

*President:*  
S. K. ARNOLD

*Hon. Secretary:*  
B. V. LAX  
153 Kilton Road,  
Worksop, Notts.

ON the 4th March, Mr. D.G. Gooding, the Technical Director of Syn Chemicals Ltd., came to Abbeydale and talked about the use of chemicals in turf culture. Mr. Gooding, sporting a really fine sun tan as he had just been on holiday abroad, brought along some slides to illustrate his talk. In these days of ever increasing use of chemicals in our work, Mr. Gooding gave us some very useful information about the various chemicals and the use to which they can be put. Mr. Gooding stressed that all precautions regarding their use should be strictly adhered to, although I am sure most Golf Clubs are not up to scratch as far as this is concerned.

I have now fixed up our summer golf matches which are as follows:

- |            |   |
|------------|---|
| May 25th   | Presidents Prize Day at Worksop G.C. Tee off 1.30 p.m.                              |
| July 20th  | Annual Tournament (section) at Sickleholme G.C. Tee off 9.30 a.m.                   |
| Aug. 23rd  | Autumn Tournament (Machin & Hartwell Trophy) Notts G.C., Hollinwell. Tee off 1 p.m. |
| Sept. 29th | Match against Northern Section, Hillsborough G.C. Tee off 9.15 a.m.                 |

I would like to thank the committees of the above clubs for their kindness in allowing us the use of their courses for our various competitions.

I would like to point out that following the President's Prize match we will be holding our A.G.M. in the evening at Worksop Golf Club, and I hope we shall have a good turn out at this. People who do not play in the golf match will be very welcome at the meeting afterwards (about 7.30 p.m.) so please come along.

Section members would like to offer their condolences to committee member, Mr. Brian Lunn. whose wife passed away in February.

## Northern Section

*Chairman:*  
COLIN CEDDES  
Moor Allerton  
Golf Club

*Hon. Secretary:*  
W. HEELES  
7 Tentergate Close,  
Knaresborough, Yorks.  
Tel: K'boro 3851

'YES, I will spend the livelong day  
With Nature in this month of May;  
And sit beneath the trees, and share  
My bread with birds whose homes are  
there;'

extract from: In May,  
W.H. Davies.

## New month, new members

A warm welcome from the section to two new members, Martin and David Shaw, both of 30, Virginia Road, Marsh, Huddersfield. The brothers are employed at Woodsome Hall Golf Club, Huddersfield and share the distinction of working under their father, Mr. Harold Shaw — see April Journal.

## When and where

Our summer season of events offers the usual endless variety and scope for you golfers.

- |           |   |
|-----------|---|
| May 26th  | Spring Tournament<br>— Keighley Golf Club           |
| June 24th | President's Day<br>— Cleveland Golf Club,<br>Redcar |
| Aug. 5th  | Invitation Day<br>— Ilkley Golf Club                |
| Oct. 14th | Autumn Tournament<br>— Bedale Golf Club             |

Fertilisers, Grass Seeds, Dressings,  
Weedkillers, Maintenance  
Equipment etc.

# Supaturf

PRODUCTS LIMITED

Werrington, Peterborough, Telephone 72470

for  
Golf Courses,  
Sports Grounds,  
Parks Dept. amenity areas.

## TORO® par for the course!

For experience, technique and sheer professionalism Toro pop-up sprinklers are right for your course. Toro waters greens, tees and fairways automatically — at night — ensuring maximum hours of play. Toro provide the complete design, installation and after-sales service through their appointed Distributors. Speak to any one of them now, you'll be in good company — Toro are already helping to keep 300 U.K. courses up to par!



**TORO 640**  
pop-up sprinkler —  
it disappears below  
ground after watering!

Your nearest Toro  
appointed Distributor ...

**J. R. Stutt Ltd.**  
Potterhill, Paisley PA2 6PZ  
Renfrew 041-884-2226

**Pipecraft Ltd.**  
Broad Lane, Cottenham  
Cambs. 0954-50808 CB4 4SW

**Wright Rain Limited**  
Flordon Road, Newton Flotman,  
Norwich NR15 1QX  
Tel. Swainsthorpe 402

**J. Wallis-Titt & Co. Ltd.**  
Woodcock Rd., Warminster  
Wilts. BA12 9DP  
098-52-3276

**E. A. Yates & Sons**  
(Sandbach) Ltd.  
Betchton, Sandbach  
Tel. Smallwood 225  
also at: Kirkgate Commercial  
Centre, Wakefield, WF1 5DL  
0924 70803

**TORO**

Marketed throughout the U.K. by  
**TORO IRRIGATION LIMITED**  
P.O. BOX 2 RINGWOOD BH24 2JD HANTS.





May the one with the highest handicap win – he usually does do!

Once again the B.G.G.A. is staging a one-day Turf Symposium. This will be held on October 5th at the Burford Bridge Hotel, Tadworth, Surrey. Interested parties should contact the secretary for further details: S.A.E's please.

### The Economy

One small but sensitively key point which must be publicised is that all subscriptions are now due for renewal. Our members' record for overdue payment is remarkably minimal. Please be kind enough to maintain this standard. Your Secretary would appreciate prompt attention.

### Block release

Several of our members have lately attended the one-week courses arranged by S.T.R.I. at Bingley, between March 22nd and April 9th.

They are:

Mar. 22nd – 26th R. Johnson, Ganton G.C.  
P.W. Lehmann, Otley G.C.  
M. Wilcock, Bradford G.C.

Although very intensive, these courses of instruction have a lot to offer turfmen in the way of supplementary knowledge. Lecture material is constantly being brought into line with advancing technology, and concurrently, every effort is made to ensure that practical demonstrations relate to and amplify the classroom theory.

### We think you are great too!

As regards Ray Tempest being a treasure to the Southern Section of whatever the B.G.G.G.A. is, how can this be refuted?

See March Journal, P.5.

### Immigrant

Mr. Gordon Bennison is now back in the nucleus after a period spent in the remote regions of South Humberside. Erstwhile Head Greenkeeper of Scun-

thorpe Golf Club, Gordon has returned to fulfil the role of Head Greenkeeper at the picturesque Pannal Golf Club. Mr. Bennison took up his new position on March 29th and plans to settle in Otley.

### Emigrant

Mr. Arthur Tucker, former Head Greenkeeper at Headingley Golf Club, has relinquished this position and has moved back over the border to his native Wales. Mr. Tucker has been at Headingley since the mid 1950's.

### March meeting

Our thanks to Mr. Jonathan Mann of Chipman Ltd., for his interesting dissertation on soil and slit drainage, on March 25th, at Moor Allerton. Over ninety per cent of the 'on site' slides shown were of football fields. This created a not unacceptable divergence from the green.

One personality present on this date, keeping the question-time up to scratch was Mr. Jeffrey Mawson. As mentioned in the March Journal, Mr. Mawson has been on the sick list, but is now recovered. Good to hear you back the other night, Jeff!

As this was most probably the last instructional meeting of the winter season, the committee and members of the Northern Section would like to thank most sincerely the committee of Moor Allerton Golf Club for allowing us the courtesy of the club facilities for our gatherings.

### Obituary

With sadness we record the death of Mr. John Downs, a former head greenkeeper to Moortown Golf Club.

At the age of sixty-six, Mr. Downs a Life Member was part of the Section for many years and will be remembered by all who knew him as a quiet, tolerant, hard working gentleman.

A tribute of flowers was sent from the Section and the funeral was attended by Mr. C. Geddes and Mr. B. Barnes, on behalf of the B.G.G.A. Our sincere condolences to Mrs. Downs on her sad loss.

# ATCO



Atco 20" Special £265.74  
(exclusive of VAT)



## more than ever your best buy!

Most golf and cricket club secretaries will be looking for economies, not only at point of purchase but in after-sales service also. Your members will nevertheless expect the playing areas to be properly mown and maintained and you and your committee will be expected to perform the miracle.

Our Atco Heavy Duty and Professional mower range is 'cut for cut' your 'best buy'—Just compare the prices!

If you want to know more, let us know at the address below and we will arrange for our Distributor in your area to send you a brochure or visit you, whichever you wish. But don't delay. Act now! And remember, Atco's supremacy is based on service!



Atco 34" Groundsman



Atco 20" H.D. mower



Atco Quintuple Vari-gang mower



Atco 18" mower

**ATCO** CHARLES H. PUGH LIMITED  
ATCO WORKS TILTON ROAD BIRMINGHAM B9 4PR  
TELEPHONE 021-772 2524-2551-3892

# LETTERS

Dear Sir,

I would like to refer to the article regarding the first of the Winter Lectures, published in December's Greenkeeper.

I have not heard such a load of cobblers from experts for a long time.

The fibre problem was with us ages before Triplex mowing was as fashionable as it is today and in any case takes years to build up to the proportions whereby it causes the problems we talk of today.

Triplex mowing, as it is called today, was called multi-mowing yesterday and was personified by the old Overgreen which machines St. Andrews have only recently discarded in favour of Triplex and we don't hear St. Andrews having a big fibre problem.

The p.s.i. of an Auto-Certes with a man walking behind is considerably greater than the p.s.i. of a Triplex so the compaction syndrome is less with Triplex.

The present excessive growth of fibre is caused by fertilization. Modern chemical fertilizers are especially designed to encourage root growth so that a sports turf surface is provided, where possible, all the year round. To do this we stimulate root growth above the rate

that nature intended. What we don't do, though, is encourage old root decay at the same rate. Consequently, like the Country, our "balance of payments" causes inflated fibre growth.

To combat this, constant aeration of the soil, together with regular root pruning, is essential and Triplex mowing secures us much more time to do this than was possible in the past.

Next thing we will hear is someone saying that multi, or gang, mowing on the fairways will cause fibre.

Come on, young Jock Glass, tell us why Triplex mowing causes fibre.

Yours faithfully,

S.G. LEDGER,  
Head Greenkeeper  
East Berks Golf Club.



## STEWARTS OF EDINBURGH TURFCULTURE SUPPLIES

### CLEAN BALL HOLE CUPS

- \* CAST ALUMINIUM ALLOY
- \* BRIGHT SILVERY FINISH
- \* KEEPS THE BALL CLEAN
- \* CONFORMS WITH THE RULES

£2.75 each, plus carriage & VAT

Stewart & Co. Seedsmen Ltd.  
Stronghold Works  
Mayfield Industrial Estate  
Dalkeith EH22 4BZ

Telephone: 031-663 6617

## HUXLEYS HIRE

### FOR THE PROFESSIONAL USER

Sometimes the purchase of equipment is not economic. We offer for hire specialised machinery for that seasonal job. Send for brochure and price list.

# Huxleys

GARDEN MACHINERY  
22/26 CHURCH STREET, STAINES, MIDDX  
Tel. Staines 51123 (3 lines)  
Also at The Dean, New Alresford, Hants  
Tel. Alresford 3222

# CHIPMAN—THE CHOICE OF THE CHAMPIONS



Derby County's ground completely reconstructed by Chipman in three months achieved 7" of root establishment before their first game 15th August 1975

## **TURFCARE** the service which eliminates the guesswork!

Chipman Turfcare relies upon a scientific study of Soil/Water relationship to produce high standards of sports turf with pre-determined drainage rates.

Chipman for modern and proven methods of sportsground construction, maintenance routines, nutrient determination and the supply of your Turfcare products

Chipman Limited, Horsham, Sussex RH12 2NR Telephone Horsham 60341/5  
and at Royal Chambers, Station Parade, Harrogate, Yorkshire HG1 1EP. Telephone Harrogate 68658  
Wincanton Close, Ascot Drive, Derby DE2 8ST, Telephone Derby 364271/4



Member of British Agrochemicals Association