

# The British Golf Greenkeeper



No. 360

May 1975

15p

# THE VERTIRAKES

## **P.V.R.** (*Pedestrian Vertirake*)

– for Golf greens, Bowling greens, Cricket pitches and Tennis courts.

## **J.V.R.** (*Junior Vertirake*)

– for Golf course greens, Bowling turf, Fine lawns etc.

## **T.V.R.** (*Tractor Vertirake*)

– for Golf course fairways, Municipal Parks, Sports pitches.



These three machines have been designed to remove all the thatch, thus stimulating recovery and growth of strong healthy grasses. You will find that each machine will clear the difficult, dead, matted, fibrous grass that is so often so difficult to get rid of.

We have a machine for every purpose from the small golf green to the largest Municipal playing fields. One great labour saving device we have fitted on our P.V.R. model is the very large glass fibre collecting box which saves an enormous amount of time and energy that would otherwise be wasted in sweeping up afterwards.

Start your New Year off well by writing for full information on VERTIRAKES to :

# Pattisson

**H. PATTISSON & CO. LTD.,**  
STANMORE HILL WORKS, STANMORE,  
MIDDLESEX.



FOUNDED 1912

Published monthly for the benefit of greenkeepers, greenkeeping and the game of golf on behalf of the British Golf Greenkeepers Association

**President:**

Carl Bretherton

**Vice-Presidents:**

Sir William Carr

Gordon Wright

F. W. Hawtree

S. Norgate

I. G. Nicholls

F. V. Southgate

P. Hazell

D. B. Hargreaves

P. Marshall

W. Payne

W. Mountain

**Chairman:**

E. R. James

49 Chatsworth Road

Parkestone

Poole, Dorset

**Vice-Chairman:**

V. W. Smith

**Hon. Secretary & Treasurer:**

W. Heeles

7 Tentergate Close

Knaresborough

Yorks.

**Executive Committee:**

Carl Bretherton (President)

G. Herrington

V. Smith

W. Heeles

A. A. Cockfield

H. Fry (Jun.)

D. H. Major

P. McCarron

J. Simpson

H. M. Walsh

E. James

**Hon. Auditors:**

Messrs. Smallfield Rawlins & Co.

Candlewick House

116/126 Cannon Street

London E.C.4

**Hon. Solicitors:**

Henry Dowding, LL.B.

203-205 High Street

Orpington

The Association is affiliated to the

English and Welsh Golf Unions

# The British Golf Greenkeeper

## CONTENTS

	Page
SPRAYING EQUIPMENT	5-9
THE GREENKEEPERS	11
AGM ASSISTANCE	13
SECTION NEWS	20-26

### Front Cover Picture

A THREE-UNIT Sisis Veemo turf maintenance machine removes turf fibre and cuts horizontal growth.

EDITORIAL ADVERTISEMENT AND SUBSCRIPTION OFFICES: Chilberton House, Doods Road, Reigate, Surrey. Telephone: Reigate 43521. SUBSCRIPTION RATE: £1.85 for 12 issues post paid. Published during the first week of each month. All rights reserved. Reproduction of original articles and photographs in whole or in part is prohibited. This Magazine shall not, without the written consent of the publishers first given, be re-sold, lent, hired out, or otherwise disposed of. Contributions and photographs of interest are invited.

LATEST COPY DATE: 1st of month prior to insertion.

TO INSERT A CLASSIFIED ADVERTISEMENT, write to the Advertisement Manager at the above address. The rate is £3.00 per single column inch. Remittance must be sent with order. Please state number of insertions required and write advertisement in block letters. Advertisements will be inserted in the first available issue.

Printed by Olivers Printing Works (Battle) Ltd.

**new!**



# TURFCARE

Eliminates the guesswork!



*Single Blade Sand Injector operating on a Golf Green*

*Scientific analysis of your soil enables us to:—*

**Eliminate Waterlogging**

**Improve soil structure**



By the New Deep  
Penetrating  
**SAND INJECTION**  
technique.

**Establish precise fertilizer requirements and Provide  
YOU with the complete prescriptive Turfcare Service.**

# CHIPMAN TURFCARE

Chipman Limited, Horsham, Sussex, RH12 2NR. Telephone Horsham 60341/5  
and at Royal Chambers, Station Parade, Harrogate, Yorkshire HG1 1EP. Telephone Harrogate 68658  
Wincanton Close, Ascot Drive, Derby DE2 8ST. Telephone Derby 364271/4

# All about spray gear

## The Importance of Reliable Spraying Equipment Calibration and Maintenance

This is a synopsis of an illustrated paper presented recently at Turf '75, a day Seminar held at Reading University and organised by Synchemicals Ltd.

THERE ARE two basic types of spraying equipment, Air Blast—not usually employed in local authority work and Hydraulic used to handle herbicides, insecticides, fungicides, growth retarders, liquid fertilizers, trace elements etc.

Materials for the above applications fall into two types—true solutions i.e. liquid chemicals in water and suspensions i.e. wettable powders in water. True solutions are corrosive to a greater or lesser degree whilst suspensions are certainly abrasive and probably corrosive.

Spraying equipment compatibility and corrosion resistance vary. Among the pump types, diaphragm are corrosion and abrasion resistant, piston are corrosion resistant but susceptible to abrasion, roller vane are liable to corrosion and abrasion whilst centrifugal are also liable to corrosion and abrasion.

Turning to tanks, the hot dip galvanized mild steel type are very good and resistant to corrosion, internally coated tanks are good but susceptible to damage and deterioration. Plastics of various types are mostly compatible but are susceptible to ultra violet light, changes in temperature and certain solvents. Fibre glass are compatible but subject to deterioration and cracking if they are not thick enough and built to a good specification.

Controls and plumbing are either metal-ferrous, coated or galvanized, non ferrous untreated or plastics.

Hoses can be synthetic rubber braided construction or plain or armoured plastic.

Booms can be ferrous or non-ferrous

pipes and jet or plastic pipes and jets.

## Types of Spraying Equipment

Tractor mounted—ground crop boom, carrier boom, hand lances etc.

Large trailer unit with ancillary equipment as above.

Land Rover with P.T.O. driven pump or separate engine driven pumping unit and range of ancillary equipment. Suitable also for Hafinger, Unimog etc.

Free standing tanks and pumping units to mount on flat bed lorry or trailer or to fit into a van or pick-up etc. Again a range of ancillary equipment.

Small trailer unit for mini tractors and equipment.

Small power operated, hand propelled unit for hand lance work.

Small pumping units c/w tank, petrol engine or electric drive. Suitable for hand lance work.

Suitable boom length and jet centres are half metre centres for herbicides and 9" centres for growth retarders.

There are basically three types of jets. Fan jets with 80° or 110° angle of spray, hollow cones and flood jets.

When considering the correct height setting of booms and jets overlapping of fan jets should be 4" to 8" depending on patterns and 50% overlapping of cones to avoid stripping.

## Calibration

To determine output required, read carefully the instructions given by the manufacturer and then check the Output Chart of the sprayer to ascertain

**[Turn to Page 7]**

# Give your roots an airing

When it comes to spiking and slicing you'll have to look a long way to find anything more effective than the Ransomes-Hahn TM Models.

The cultivating action of the aerating 'spoons' are the result of patient research into the surest way that the spiking will allow air, water and fertiliser to do most good. This action is unique to Ransomes-Hahn. Turf tearing is prevented by the patented 'Flexi-press' springs which fit over the spoons. Alternatively, the double point spiker blades cut cleanly and quickly. Three point tractor attachment makes the TM models highly manoeuvrable to deal with normally inaccessible areas.

Point for point you can't do better than employ Ransomes-Hahn turf maintenance equipment, talk it over with your Ransomes dealer.

## Check these features

Two models TM140 or TM 80.

Full 6' cultivating width.

140/ 80 spoons of  $\frac{3}{4}$ " open or thatch type with Flexi-press springs to match, or 140/ 80 blades

Built in weight rack as standard - also acts as effective safety guard.

Disc weights available as optional extra.

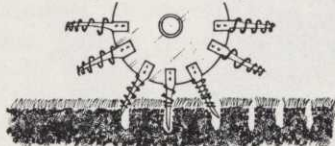
Draught eye as standard to attach drag mats.

Ransomes Sims & Jefferies Ltd., Ipswich.

## RANSOMES

### Ransomes-Hahn TM-140 Aerifier ...and a complete range of turf improving equipment

#### Nothing beats cultivating action



*Packed soil now has room to expand into the scooped out holes. The root-zone is opened out to enable air, water and fertiliser to have the most benefit. Strong root formation is made more easily in the surrounding soil.*

**BUY OR  
LEASE**

### [Spray Equipment from Page 5]

the size of jet and pressure required.

**N.B.** Tractors based on 4 m.p.h. and Land Rovers on 8 m.p.h. Have available a container of water and measuring vessel.

The following procedure should then be followed:—

- (1) Fill tank with clean water.
- (2) Fit correct size jet.
- (3) Run up sprayer and check that the jets are working and anti-drips function.
- (4) Set Pressure Control Valve so that the pressure is as given in the Output Chart for the volume required. (Note any variances for any anti-drips fitted).
- (5) Switch Main Control cock to the "OFF" Position (Note all boom selection cocks are switched "ON").
- (6) Decide gear and engine revs to give 4 m.p.h. P.T.O. speed must be 540 r.p.m. when using wettable powders. If other forward speeds are required consult the Instruction Book under heading "Calculation Formulae", or chart giving jet outputs at different forward speeds.
- (7) With tractor or Land Rover on level ground, top-up tank to the lid rim.
- (8) With two flags mark out  $\frac{1}{4}$  acre strip of ground to be sprayed. The distance between the flags will be determined by the width of the boom.

#### **Boom Width**

- 18 ft.
- 21 ft.
- 24 ft.
- 27 ft.
- 30 ft.
- 39 ft.

#### **Distance to be covered to spray $\frac{1}{4}$ acre**

- 202 yards
- 173 yards

- 151 yards
- 134 yards
- 121 yards
- 93 yards

#### **Distance between flags**

- 101 yards
  - 86 $\frac{1}{2}$  yards
  - 75 $\frac{1}{2}$  yards
  - 67 yards
  - 60 $\frac{1}{2}$  yards
  - 46 $\frac{1}{2}$  yards
- (9) Drive at 4 m.p.h. and when the boom is level with the first marker, switch main control to "ON".
  - (10) Drive on down to the second marker and when the boom is level with the second marker switch main control to "OFF".
  - (11) Turn tractor or Land Rover and repeat the spray run in the opposite direction.
  - (12) Return to position where the tank was originally "topped-up".
  - (13) Fill sprayer tank to rim, measuring the exact amount of water added.
  - (14) This will be the amount of water sprayed on  $\frac{1}{4}$  acre, and to find output in gallons per acre multiply this figure by 4.
  - (15) If this is the correct output required make note of jet pressure, gear and engine revs for future spraying at this particular output.  
If the volume is incorrect, adjustment can be made by either altering the pressure, or by adjustment on the speed of the tractor or Land Rover.

#### **Maintenance**

##### **Daily—Sprayer**

- (a) flush out with water.
- (b) remove all hoses and run pump dry.
- (c) drain tank.
- (d) wash down externally.

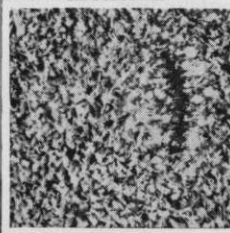
**[Turn to Page 9]**



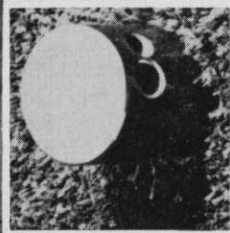
The 18th at 5.30 am!

**(It could be St. Andrews, Troon, Sunningdale or your club...)**

Toro 'pop-up' sprinklers water greens, tees and fairways through the night, automatically. Day time stoppages are eliminated, courses play consistently and of equal importance, greenkeepers can concentrate on other more demanding work around the course. Consider these benefits then ask Wright Rain to design a Toro 'pop-up' scheme for your club! Write for details and the name of your nearest appointed installer now.



Now you don't!



Now you see it . . .

**NEW!** This Toro 'pop-up' sprinkler disappears below ground after watering. Its fully retracting head protects against damage by mowers or vandals . . .



MADE IN GREAT BRITAIN

**Wright Rain**

**WRIGHT RAIN LIMITED**  
Ringwood, Hampshire BH24 1PA  
Telephone Ringwood 2251

Sole UK distributors for



pop-up sprinklers systems



[Spray Equipment from Page 7]

**Filter**

- (a) remove and clean filters.
- (b) check gaskets and seals.

**Power Drive Shaft (if fitted)**

- (a) grease.
- (b) check spring loaded clip.

**Pump**

- (a) grease if possible.

**Pressure Gauge**

- (a) check for zero reading and chemical blockage.

**Booms**

- (a) check jets for alignment damage and wear.
- (c) check hoses for fit and damage.

**Storage & Frost Precautions**

- (a) flush with water and scrub tank with washing soda.
- (b) flush out with water.
- (c) fill with water and de-watering fluid for metal tanks.
- (d) pump out but not through boom if plastic.
- (e) remove all jets, anti-drip devices, feed hoses and store in a dry, warm, dark place.
- (f) open all valves, remove all end caps and drain plug.
- (g) ensure pump completely empty of water.
- (h) grease and oil all threads, hinges and all surfaces requiring to be kept free from rust.
- (i) store the sprayer in a safe, dry place with the tank lid just open to avoid condensation.

**LAWN  
MOWER  
GRINDERS**



A comprehensive range of superior machines designed and built to suit operators' requirements. For brochure and full details contact us now.

**ATTERTON & ELLIS LTD**  
Dent, B.G.G. Iron Works, Haverhill,  
Suffolk. Tel: Haverhill 2312/3.

**Warren's® A-34**

**BLUEGRASS (Poa Pratensis)**

**A Smooth Stalked Meadowgrass!**

**The Bluegrass  
that bounces back!**

- **RECOVERS QUICKLY FROM INJURY.**
- **Highly disease resistance.**
- **Withstands shade (up to 65%).**
- **Thrives in open sunlight and varying soil conditions.**
- **Withstands short mowing, down to ½ inch.**
- **Produces a dense green sward of turf.**

**Warren's A-34 Seed  
cost less . . .**

**1 Pound Sows  
2,000 Sq. Ft.**

(Over 1,000 seeds per sq. ft.)

**AVAILABLE AS SEED AND TURF**

**FOR SEED CONTACT:**

**HURST GUNSON  
COOPER TABER LTD.**

Witham, Essex, CM8 2DX  
Phone: Witham 3451

**FOR TURF CONTACT:**

**EASTERN CULTIVATED  
TURF FARMS LTD.**

Cranley Nursery, Cranley Gardens  
Muswell Hill, London, N10-3AR  
Phone: (01) 883-5880

**MELDRUM NURSERIES**

Montrose Road, Silverwells  
Arbroath, Angus, Scotland  
Phone: Arbroath 2286

# Would you buy a mower from a firm that has produced only half a million or so?

If you're looking for gimmicks of course you wouldn't. Because it smacks too much of traditional values - universal appeal, continuity of design, and so on - and a determination to keep it that way.

Fortunately for the world's sportsmen (and women), groundsmen throughout 73 countries think differently. They go for robust construction, proven design, ready availability of spares and a reputation for reliability that dates from 1921.

They choose -

## JACOBSEN

Jacobsen mowers are available in the UK from a national network of distributors, all of whom carry good stocks of essential spares and offer an expert technical and after-sales service. Over 80% of spares are stocked by Rolfe, suppliers of an extensive range of turf care equipment and sole importers in the UK of Jacobsen mowers.

Send now for Rolfe's 20-page brochure, price list and details of your nearest distributor.



# ROLFE

**Rolfe's International Turf Equipment Ltd.,**

Winchester Hill, Romsey,  
Hampshire.

Tel: Romsey 513185  
Telex: 47347

**Greens King 62** - The latest in a long line of successful Green Kings, with improved control, tighter turning, 3-reel selection and 2 transport speed ranges. 14HP engine and hydraulic transmission standard. Mows 18 average greens in under 4 hours. Choice of 7 attachments.



**Turf King** - Improved version of the highly successful 76"/84" articulated reel mower. Gives 50% increase in mowing speed; 67% increase in transport speed. Superb manoeuvrability. Mows up to 30 acres in an 8 hour day.



**Commercial 60** - A tough, all purpose 60" mower that goes round trees, up steep slopes, along smooth flats at up to 7 1/2 m.p.h.! 18HP engine, hydrostatic transmission standard. A joy to handle.



**F133** - A superb 5-gang 4 wheel reel mower with an 11ft cutting width. Reduces to 3-gang for narrow areas. Mowing units ahead of wheels prevent uncut streaks of grass. Mows up to 50 acres per 8 hour day.



# The Greenkeepers

## No. 3 : Vic Smith

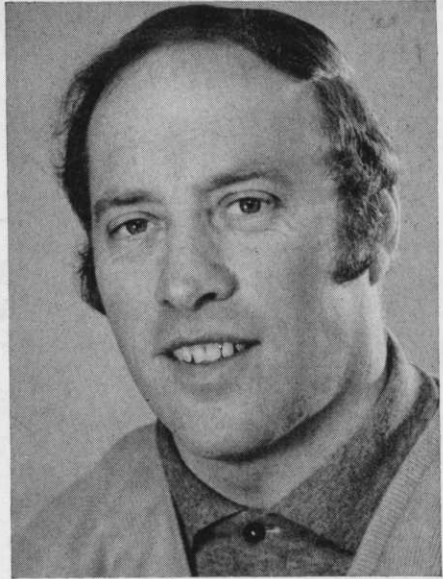
VIC SMITH took over as Head Greenkeeper of Handsworth Golf Club, Birmingham, in 1967 when Ernie Benbow retired after 40 years service at the Club. After leaving school at Market Bosworth in Leicestershire Vic did two years night school studying botany and then went into the army for two years. Among the places he visited were Aden, Algiers, Ceylon, Egypt, Malta, Gibraltar, Singapore, Hong Kong, Japan and Korea.

After leaving the army he went back to Handsworth, becoming first assistant after several years. The skills which Ernie Benbow had taught him stood him well when he became Head Greenkeeper and he further increased his experience when he went to the U.S.A. with the British Greenkeepers in 1973.

Vic has served the Association well having been for the last 14 years on the Midlands Section Committee of which he is now Chairman. He is also Vice Chairman of the B.G.G.A. Having played to 6, his present handicap is 10 but says he doesn't have the time to play so much these days.

Handsworth is a 21 hole inland type course and undulating. In the past ten years the course has been beautified by the planting of 10,000 trees, a project which members yet to come will appreciate. The Club has 850 members in all of which 400 are playing members. It shares the distinction with the Association of having Carl Bretherton as President.

A total of five full time greenkeeping staff have a wide range of equipment to help them. These include 2 Tractors, 1 Trencher, 1 Shredder, 1 Rotary Soil Sifter, 2 Certes, 1 Sprayer, 1 Ransome 24" Mower, 1 Rotorake, 1 Rotovator, 2 Flymo, 1 Hayter 26" Rotary, 1 Toro 70", 1 Ransome Hahn, 1 Sisis Aerater Greens, 1 Aerater Fairways, 2 Hayter Rotarys 18", 1 Over-green, 1 Mk 10 Quintuple Gang Mower, 1 Mk 12

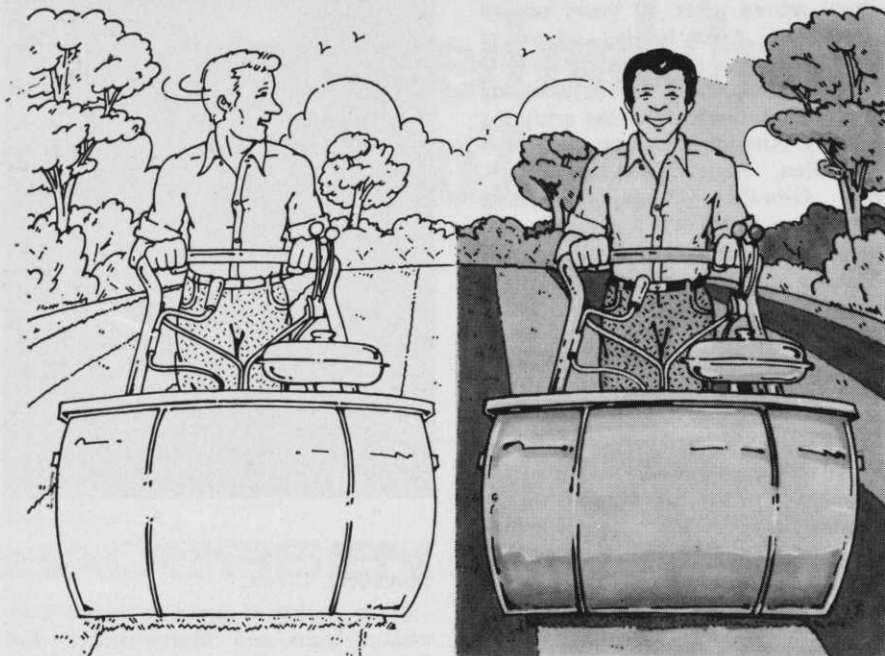


Quintuple Gang Mower, 2 Cyclone Spreaders, 1 Van.

Vic's choice of grass seeds are Cannock, Fisons and Mommersteeg. For fertilizers he relies on Cannock, Fisons and S.A.I. and his choice of fungicides is Tecto, Mersil, Maysan and Mildothane.

One of the special problems presented by the course is vandalism as it is on the edge of a 300-acre open space, but it is fortunate that Birmingham City Council are building a new Municipal Golf Course next to the course—the architect is Mr. Fred Hawtree. Handsworth G.C. now has acquired an Alsatian dog which they find a very good deterrent. One other problem is the drains, part of the course has a considerable amount of clay, while the other half is gravel. The drains are of the old type 2" and 4½" down which created trouble before they had the trencher. Over the last 4 years three new holes have been made through dense woods, bracken and bogs.

# Why the other man's grass is always greener



He goes to Parkers. Leading groundsmen and greenkeepers go to Parkers because we know more about turf than anyone else. From sowing right through to mowing. We can supply the seeds, the fertilisers, the equipment, the service and the expert care that helps to make the finest turf. The kind of turf that can earn you and your club a good name year after year after year.

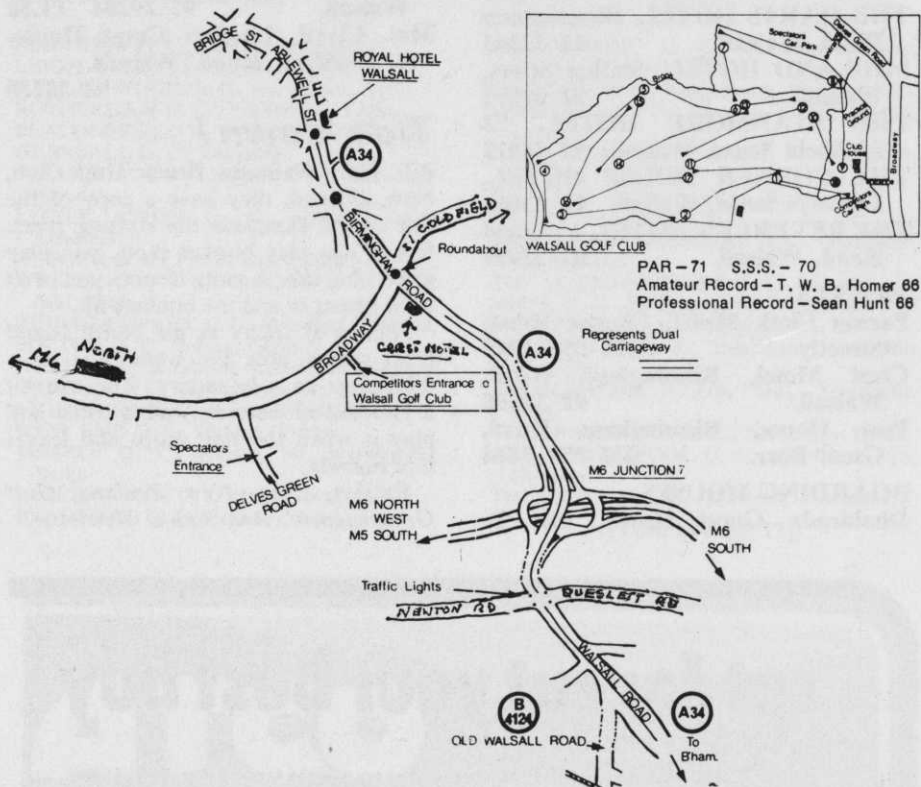
How Parkers keep greens green \* Free advisory service \* Big selection of grass seeds including the famous 'Verdant' range of seeds and fertilisers \* Mommersteeg Pedigree grass seed \* Watering equipment \* Disease control products \* Mowers, tractors & specialised machinery \* Sisis range of equipment \* Repairs and complete after-sales service \* Deckson professional grass machinery.

*From sowing to mowing*  
**Parkers**

T. PARKER & SONS (Turf Management) LTD., Worcester Park, Surrey, KT4 7NF. Tel: 01-337 7791 or 0861

# Finding your way to the AGM

For members planning to attend the AGM and Annual Tournament, we reproduce below a map of the area and a list of addresses at which accommodation within a reasonable distance can be provided. Telephone numbers and bed/break fast prices are also listed.



## HOTELS

**CLOVERLEY.** 17, Anchorage Road,  
Sutton Coldfield, B73 6EJ

021 354 5181 £2.50

**MANOR.** 3, Manor Road, Sutton  
Coldfield, B74 2PJ.

021 354 6259 £2.00

**STANDBRIDGE.** 138, Birmingham

Road, Sutton Coldfield, B72 1LY.

021 354 3007 £3.00

**CHADWELL.** 637 Chester Road,  
Sutton Coldfield, B73 5JS.

021 373 5870 £2.50

**THE WYCHBOLD.** 158 Birmingham  
Road, Sutton Coldfield, B72 1LY.

021 354 1092 £3.25



## Granular Fertilisers

IDEAL FOR FAIRWAYS  
AND APPROACHES

SEND  
NOW  
FOR OUR FREE  
'GREENKEEPING'  
CATALOGUE

CANNOCK FERTILISERS LIMITED, CANNOCK, STAFFS WS11 3LW

[Hotel list from Page 13]

- THE ROYAL HOTEL**, Ablewell Street, Walsall. 92 24555  
**THE COUNTY HOTEL**, 45 Birmingham Road, Walsall. 92 22391  
**THE HARTS HOTEL**, Birmingham Road, Walsall. 92 22343  
**MIDLAND HOTEL**, Station Street, Walsall. 92 21892  
**THE STANMORE HOTEL**, 73 Lichfield Street, Walsall. 92 25012  
**THE CORNER HOUSE HOTEL**, Lysways Street, Walsall. 92 23061  
**THE BEVERLEY HOTEL**, Lichfield Road, Walsall. 92 22999

#### MOTELS

- Parson Clerk Motel**, Chester Road, Streetly. 021 353 1747  
**Crest Motel**, Birmingham Road, Walsall. 92 33555  
**Post House**, Birmingham Road, Great Barr. 021 357 7444

#### BOARDING HOUSES

- Dhaldrada Guest House**, Mr. L.

- Whittaker**, 40, Lichfield Road, Walsall. 92 28475  
**Mrs. Toon**, 33, Highgate Road, Walsall. 92 27872  
**Mrs. Walmsley**, 34, Lichfield Road, Walsall. 92 29284 £1.50  
**Mrs. Lloyd**, Larches Guest House, 4, Lichfield Road, Walsall. 92 38730

### *Tide down!*

AT THE Waimairi Beach Golf Club, New Zealand, they have a copy of the tide charts alongside the starting sheet. If you can play bunker shots, you play when the tide is out, if not, you wait till it comes in and the bunkers fill.

Almost as tricky as the North Island Club which uses the water line of a tidal river as a boundary. You can hit a ball out of bounds, wait a while and play it when the tide drops and leaves it in bounds.

Extract from—*New Zealand Golf Greenkeepers' Association Newsletter*.

# cut for cut, your best buy

Don't take our word for it. Simply cast your eye over the Atco 20' 'Special' and look at these outstanding features—

#### Smooth, robust power

From a 6 h.p. four stroke engine and a 6 pint fuel tank ensures longer hourage mowing between refills..

#### Superb cutting ability

Twelve precision ground cutter blades giving 135 cuts per yard, and special, thin bottom blade ensures superfine cut down to 60 thou. And furthermore, the close spacing between the front rollers and cutter reduces the risk of scalping to a minimum.

#### Other plus features—

Include a 'combit' rake, fitted as standard, radiused rollers to avoid marking at end turns and fully powered transport wheels for rapid transportation from green to green.

#### Finally — Wise Investment

The Atco 20' 'Special' is cut for cut, your best buy. So why not ask your nearest Atco distributor for a demonstration by ringing or writing to the address below, and find out for yourself.

# ATCO

*as famous as the turf we cut*

CHARLES H. PUGH LTD. ATCO WORKS TILTON RD. BIRMINGHAM B9 4PR  
TELEPHONE:- 021-772 2524. 2551. 3892

# These clubs answered appeal

**THE following clubs have generously responded to the British Golf Greenkeepers Association appeal for annual donations to help provide funds, particularly for training.**

ASHRIDGE G. C., Berkhamsted, Herts.  
LEIGH G. C., Culcheth, Warrington.  
HADLEY WOOD G. C., Nr. Barnet, Herts.  
ROTHERHAM G. C., Rotherham, Yorks.  
BEACONSFIELD G. C., Beaconsfield, Bucks.  
HEARSALL G. C., Coventry.  
PETERBOROUGH MILTON G. C., Peterborough.  
LITTLE ASTON G. C., Streetly, Sutton Coldfield.  
IPSWICH G. C., Purdis Heath, Ipswich.  
WHITTINGTON BARRACKS G. C. Lichfield, Staffs.  
RENISHAW PARK G. C., Reinshaw, Sheffield.  
BOLTON G. C., Bolton, Lancs.  
NOTTS G. C., Kirkby-in-Ashfield, Nottingham.  
GARFORTH G. C., Garforth, Nr. Leeds.  
STONEHAM G. C., Bassett, Southampton.  
WEST END G. C., Halifax, Yorks.  
TEMPLE G. C., Hurley, Nr. Maidenhead, Berks.  
LETCHWORTH G. C., Letchworth, Herts.  
BRADFORD G. C., Guiseley, Leeds.

ROEHAMPTON G. C., Roehampton Lane, London.  
MOSELEY G. C., Kings Heath, Birmingham.  
WORSLEY G. C., Monton Green, Eccles, Lancs.  
DALE HILL G. C., Ticehurst, Nr. Wadhurst, Sussex.  
NEATH G. C., Neath, Glam, Wales.  
EATON G. C., Norwich.  
NTH. WORCESTERSHIRE G. C., Northfield, Birmingham.  
THE LEICESTERSHIRE G. C., Leicester.  
WATH G. C., Rawmarsh, Nr. Rotherham.  
PARKSTONE G. C., Parkstone, Dorset.  
EDGBASTON G. C., Edgbaston Park, Birmingham.  
WILDERNESSE CLUB, Seal, Sevenoaks, Kent.  
THE MOORTOWN G. C., Alwoodley, Leeds.  
THE HARTLEPOOL G. C., Hartlepool, Co. Durham.  
THETFORD G. C., Thetford, Norfolk.

**[Turn to Page 17]**



**ATCO VARI-GANG MOWER**

# 'GOLD-N' the fertilizer to last the season

## Slow release nitrogen fertilizer from ICI (32% N)

This 32% N Fertilizer is an absolute boon to everyone concerned with superb grass, whether it be for a sportsfield or for general amenity areas.

It gives an initial boost within a few days, then a steady supply of nitrogen for up to 5 months. It keeps the turf lush and green all season and minimises leaching and scorching.

So you need only apply it once, by hand or machine. That's a great saving on time and labour.

'GOLD-N' is a highly efficient source of nitrogen—it goes further. And virtually all the nitrogen is usable, even at low soil temperatures.

It flows easily and is free from dust and there are no disease risks.

You can use it indoors on glass-house crops, or outdoors on vegetables, pot plants, fruit and shrubs as well as on grass.

It's another great winner from ICI.

For further details, contact:

### ALL USES

#### Imperial Chemical Industries Ltd.,

Bristol	Avonmouth 3601
Cambridge	(0223) 61601
Guildford	(0483) 65551
Lincoln	(0522) 24531
Shrewsbury	(0743) 4021
York	(0904) 56761
<b>SAI Horticulture Ltd.</b>	Edinburgh 031 554 5451/6
<b>Richardsons (Ulster) Ltd.</b>	Belfast 57424/5/6
<b>ICI (Ireland) Ltd.</b>	Dublin 771831

### GLASSHOUSE CROPS

#### Plant Protection Ltd., Yalding

Maidstone 812511

### TURF

#### Chipman Limited

Horsham 60341 Harrogate 68658 Nottingham 52397



# 'GOLD-N'

slow release nitrogen fertilizer





**[Donations from Page 15]**

HAM MANOR G. C. Angmering, Sussex.  
WOODCOTE PARK G. C., Coulsdon, Surrey.  
WREXHAM G. C., Wrexham, Denbighshire.  
ROYAL WIMBLEDON G. C., Wimbledon.  
LEWES G. C., Lewes, Sussex.  
WESTON-SUPER-MARE G. C., Weston-Super-Mare, Somerset.  
POTTERS BAR G. C., Potters Bar, Herts.  
GILLINGHAM G. C., Gillingham, Kent.  
THE HERNE BAY G. C., Herne Bay, Kent.  
COOMBE HILL G. C., Kingston Hill, Surrey.  
REDDITCH G. C., Redditch, Worcs.  
RYDE G. C., RYDE, I.O.W.  
ISLE OF PURBECK G. C., Swanage, Dorset.  
TRENTHAM PARK G. C., Trentham Park, Stoke-on-Trent.  
FILTON G. C., Filton, Bristol.  
NUNEATON G. C., Nuneaton, Warwicks.  
TOLLADINE G. C., Worcester.  
COTSWOLD HILLS G. C., Cheltenham.  
CLECKHEATON & DISTRICT G. C., Cleckheaton, Yorks.  
HEXHAM G. C., Hexham, Northumberland.  
NTH. WARWICKSHIRE G. C., Warwickshire.  
HILLSIDE G. C., Hillside, Southport.  
ABERDOVEY G. C., Aberdovey, Merioneth.  
HOWLEY HALL G. C., Morley, Leeds.  
MINCHINHAMPTON G. C., Stroud, Glos.  
ROYAL EASTBOURNE G. C., Eastbourne.

SHANKLIN & SANDOWN G. C., Sandown, Isle of Wight.  
VERULAM G. C., St. Albans, Herts.  
THE WORKSOP G. C., Worksop, Notts.  
KINGSDOWN G. C., Box, Wiltshire.  
MALDON G. C., Maldon, Essex.  
HESKETH G. C., Southport, Lancs.  
DYRHAM PARK COUNTRY CLUB, Barnet, Herts.  
HIGHCLIFFE CASTLE G. C., Christchurch, Dorset.  
SEAFORD HEAD G. C., Scaford, Sussex.  
KEIGHLEY G. C., Keighley, Yorks.  
GRANGE FELL G. C., Grange-over-Sands, Cumbria.  
BUCKINGHAM G. C., Buckingham, MK18 4AE.  
CAMBERLEY HEATH G. C., Camberley, Surrey.  
SLEAFORD G. C., South Rauceby, Lincolnshire.  
BURSLEM G. C., Tunstall, Stoke-on-Trent.  
CHILWELL MANOR G. C., Chilwell, Nottingham.  
MONMOUTH G. C., Monmouth, Sth. Wales.  
DULWICH & SYDENHAM HILL G. C., Dulwich.  
HARTSWOOD G. C., Brentwood, Essex.  
DARTMOUTH G. C., West Bromwich, W. Midlands.  
LINCOLN G. C., Torksey, Lincoln.  
WAKEFIELD G. C., Sandal, Wakefield.

**[Turn to Page 19]**



**electric, telephone, and signal cables,  
water, gas, and oil pipes,  
sportsfield, and parks drainage**

**it's easier  
& cheaper with a  
SCOOP TRENCHER**

Scoop Trenchers dig trenches 4, 6, and 8 inches wide, and up to 39 inches deep automatically in any soil condition at speeds of up to 100 yards per hour.

A built in winch ensure positive traction even in bad conditions. Transportation and work in confined areas is easy because Scoop Trenchers are small.

The digging chains have a breaking strain of 21 tons so Scoop Trenchers are robust too.

Their initial cost can be saved in only 2,000 yards of work.

Send NOW for full details of machine, and hire rates to:-

**A. F. TRENCHERS LTD.**

Gosbecks Road, Colchester. Telephone 44411



## **"Tailored" to your needs—**

*A COMPLETE RANGE OF TURF DRESSINGS*

### **TAYLOR'S SUPER FERTILISER**

**Spring/Summer Grade**

This fertiliser has no equal for fine turf areas, and is widely used by parks departments and other authorities for bowling and golf greens. It is a scientific blend of organic and inorganic materials, and is a complete balanced grass food which may be applied from March to August. First dressing at 2 oz. per sq. yd., subsequently 1 oz. per sq. yd.

### **TAYLOR'S COMBINED FERTILISER AND SELECTIVE WEEDKILLER**

may also be applied now at 3 oz. per sq. yd.  
(about 8 cwts. per acre).

## **RIGBY TAYLOR LTD.**

**VICTORIA WORKS, BOLTON, BL1 4AE**

**Tel : 23956, 26231, 26232**

**RAIN BIRD®**  
**reigns supreme**  
*(conventional or automatic)*

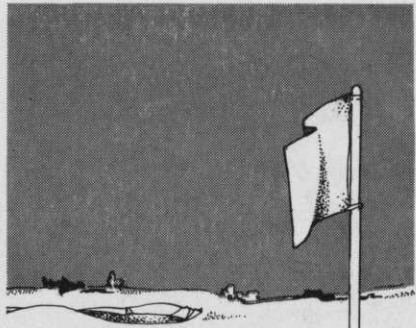
In Palm Springs 32 out of 33 golf courses chose Rain Bird equipment for their irrigation systems. 40 years of experience in the design and development of sprinklers combined with modern technology and a high standard of quality control have established Rain Bird as the largest manufacturers of quality impact sprinklers and other irrigation equipment.

For full details of the best in turf irrigation contact our officially appointed area distributors: —  
Ian Maiden, Farrods of Ripon Ltd., Dallamires Lane, Ripon, Yorks. Tel: Ripon 4455  
Gerry Wilkins, Rainbow Irrigation, Sussex House, 23 Cuckfield Road, Hurstpierpoint, Sussex,  
Tel: Hurstpierpoint (0273) 832888

**ptc** or the Sole U.K. Distributors: —  
Irrigation Division, Sterling Works, Bath Road, Aldermaston, Berks. Tel: Woolhampton 2346.

## [Donations from Page 17]

KNOLE PARK G. C., Sevenoaks, Kent.  
RUSHMERE G. C., Ipswich.  
LITTLEHAMPTON G. C., Littlehampton,  
Sussex.  
HESSLE G. C., Hesslewood, Yorkshire.  
ROCHESTER & COBHAM PARK G. C.,  
Rochester, Kent.  
MITCHAM G. C., Mitcham Junction, Surrey.  
SOUTH SHIELDS G. C., Sth. Shields, Co.  
Durham.  
EAST HERTS G. C., Buntingford, Herts.  
LADBROOK PARK G. C., Tanworth-in-  
Arden, Solihull, Warwickshire.  
PENNARD G. C., Southgate, Swansea.  
BRISTOL & CLIFTON G. C., Failand,  
Bristol.  
BERKSHIRE G. C., Ascot, Berks.  
CLACTON-on-SEA G. C., Clacton-Essex.  
CLEVELAND G. C., Redcar, Yorkshire.  
THE WHITLEY BAY G. C., Whitley Bay.  
WILLESLEY PARK G. C., Ashby-de-la-  
Zouch, Leicestershire.  
HALIFAX BRADLEY HALL G. C., Halifax,  
Yorks.  
THE PONTELAND G. C., Ponteland, New-  
castle-upon-Tyne.  
GIRTON G. C., Girton, Cambs.  
FILEY G. C., Filey, Yorks.  
LEE-ON-THE-SOLENT G. C., Lee-on-the-  
Solent.  
SUNDRIDGE PARK G. C., Bromley, Kent.  
FRILFORD HEATH G. C., Abingdon, Oxon.  
THE NORTHAMPTON COUNTY G. C.,  
Church Brampton, Northampton.  
PUTTENHAM G. C., Puttenham, Nr. Guild-  
ford, Surrey.  
MAIDENHEAD G. C., Maidenhead, Berks.  
RADCLIFFE-ON-TRENT G. C., Radcliffe-on-  
Trent, Notts.  
WOODBRIDGE G. C., Woodbridge, Suffolk.  
THE TADMARTON HEATH G. C., Ban-  
bury, Oxon.  
EFFINGHAM G. C., Effingham, Surrey.  
WEST MIDDLESEX G. C., Southall, Middle-  
sex.  
SUNNINGDALE G. C., Ascot, Berkshire.  
THE LONG ASHTON G. C., Long Ashton,  
Bristol.  
BROADWAY G. C., Broadway, Worcs.  
OLDHAM G. C., Oldham, Lancs.  
GUILDFORD G. C., Guildford, Surrey.  
ABBEYDALE G. C., Dore, Sheffield.  
CARMARTHEN G. C., Carmarthen, Wales.  
FLACKWELL HEATH G. C., High Wy-  
combe, Bucks.  
WILLINGDON G. C., Eastbourne, Sussex.  
WATERLOOVILLE G. C., Waterlooville,  
Portsmouth, Hants.  
MOOR PARK G. C., Rickmansworth, Herts.  
HARTSBOURNE COUNTRY CLUB, Bushey  
Heath, Herts.



It's almost  
a shame to cut  
a hole in it

## Nickersons Gold Seal

Smooth as velvet, true as steel - this is a green sown with Nickersons Gold Seal. Gold Seal Blend is the ideal fine-leaved grass mixture: extremely persistent under close and frequent mowing, uniform in growth, colour and texture. Gold Seal, like Silver Seal for tees and Bronze Seal for fairways, is one of Nickersons' special mixtures for special situations.

For the Seal Blend brochure ring or write to:



Nickersons of Rothwell, Scientific Seedsmen, Field House,  
Grimsby, South Humberside DN34 4SX. Tel: 0472 58021





## SECTION NEWS

### A nationwide round-up of news from the branches

us a talk on The Modern Use of Fertilizers. I am sure everybody must have picked up something useful.

Whilst on the subject of Winter lectures, I would like to thank everyone who has attended our monthly meetings. We averaged between 40 and 50 members throughout the winter. If anyone has any ideas for next winter's subjects maybe they will let me know.

Dates for our Summer golf fixtures are as follows:

Mr. S. K. Arnold (President) Prize:  
June 11th, Abbeydale Golf Club,  
2.30 p.m. followed by A.G.M.

Annual Tournament (Section): July

### Sheffield Section

*President:*  
S. K. ARNOLD

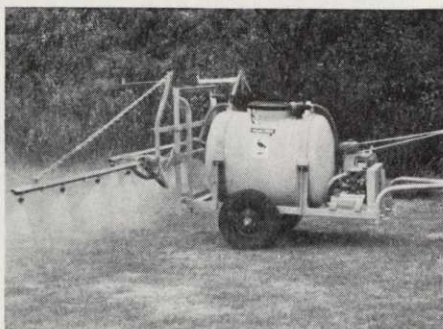
*Hon. Secretary:*  
B. V. LAX  
153 Kilton Road,  
Worksop, Notts.

THANKS for an interesting Lecture go to Mr. C. J. Head of Chipman Ltd. At Abbeydale on 6th March he gave

# Spray away with Dorman



The 'Ely' sprayer has a 10 gallon tank feeding a 7ft spray boom. Although normally supplied with a 2-stroke engine a 4-stroke power unit is also available. The 'Ely' can also be fitted with a hand lance making this compact machine even more versatile.



This 44 gallon trailer sprayer unit with its 18ft spray boom is perfect for the large park or golf course. Many useful accessories are available including a trolley sprayboom for working on fine turf up to 120ft away from the tractor.



Many other models available to meet any requirements.  
The Dorman Sprayer Co. Ltd. Brays Lane, Ely, Cambs. Tel: Ely (0353) 2833/4/5/6.



**A PARTY** of 40 greenkeepers from the North West section of the British Golf Greenkeepers Association, recently visited Ransomes factory at Ipswich. During their visit they watched the production of professional grass machinery in the factory, and saw a demonstration of some of Ransomes high work rate grass cutting and turf maintenance machinery.

9th, Wheatley Golf Club, 9.30 a.m.  
Autumn Tournament: September  
15th, Dore & Totley Golf Club,  
1 p.m.

Many thanks to Captains and Committee of all the above Golf Clubs, for their kind permission in allowing us the use of their courses for our fixtures.

### **East Midland Section**

*President:*

R. BAILEY  
147 Mere Road,  
Wigston Magna,  
Leics.

*Hon. Secretary:*

S. FRETTER  
4 Queens Drive,  
Leicester Forest East,  
Leics.

A QUIZ was held at The Three Nuns Hotel on 24th February 1975. This was won by Mr. R. Willar's Team.

A Film Show given by Toro Ltd was held at Scraftoft Golf Club on 12th March 1975. It was a very interesting

show and thoroughly enjoyed by everyone. There was a good attendance by greenkeepers, also it was nice to see representatives from Henton & Chattel, Erringtons of Evington and Walkers Golf Course Suppliers.

The Annual Autumn Golf Tournament will be held at Birstall Golf Club on 1st October 1975.

Owing to a typographical error, there was a mistake in the Sections News from East Midlands published in our March issue. Retiring treasurer, Mr. Alan Thornton, was inadvertently presented with the knock out cup in our account but the knock out cup was, of course, presented to Mr. Lane. Mr. Thornton was presented with a barometer. Our apologies to all concerned.

**[Turn to Page 23]**

# RELF & KENDALL

## OF CROYDON AND BARNET

With pleasure announce that they hold the greatest concentration of lawn mower spares and lawn mower engine spares in the country

**ENORMOUS STOCKS OF RANSOMES SPARE PARTS**

### RANSOMES

Also ASPERA, B.S.A.,  
BRIGGS & STRATTON,  
DENNIS, J.A.P., ROTAX,  
VICTA, VILLIERS

Service Exchange items such as CUTTING CYLINDERS — MAGNETOS  
OUR FLEET OF VANS IS OCCUPIED DAILY IN MAINTAINING OUR  
EXPRESS SPARE DELIVERY SERVICE

Telephone your  
immediate requirements to



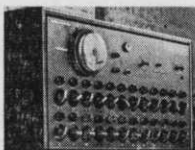
### RELF & KENDALL

406 BRIGHTON ROAD, SOUTH CROYDON,  
SURREY. CR2 6XX. Tel (01) 688 0578

16a PLANTAGENET ROAD, NEW BARNET,  
HERTS. Tel (01) 449 8228

We stock a comprehensive range of domestic and professional  
machinery. Ask for a demonstration on YOUR ground

## Perfect Greens, Tees & Fairways



## ...Automatically!



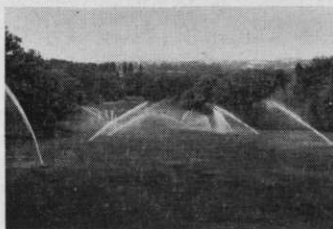
Cut expensive labour costs with a complete Cameron System — a wise investment that soon pays for itself. Cameron Automatic Pop-Up Sprinklers automated by the Cameron Electronic Control Panel are used at over 100 courses all over the world — including Britain's first complete fully automatic Fairway Watering System at Coombe Hill.



### cameron puts water to work

- Waters greens, tees and fairway at regular intervals—right through the night.
- One man controls entire system. • No inconvenience to players.
- Disperses dew. • Can be used to apply fertilisers.
- Free survey and full estimate without obligation.
- Portable sprinklers of all types available.

Cameron's unique experience means perfect greens, tees and fairways throughout the year. Write for details.



# cameron

Cameron Irrigation Company Limited

Harwood Industrial Estate Littlehampton, Sussex BN17 5BR Telephone: Littlehampton 3985 (5 lines) Telex: 877483



A member of Reed Irrigation International

## South Coast Section

*Chairman:*  
E. R. JAMES

*Hon. Secretary:*  
MRS. J. STIMSON  
North Wilts. G.C.  
Devizes.

OVER forty members attended the third Winter lecture held at Alresford Golf Club recently and they were rewarded with a very interesting talk on Irrigation by Mr. R. Gundry of Toro/Wright Rain Ltd. Mr. Gundry covered every aspect of the various water systems which are installed on golf courses in this country and he illustrated several points by special slides.

Considering the fact that Mr. Gundry had to deputise for Mr. Flowerday at the last minute and he also remained unperturbed by the presence of a "member" only four years old, we all agree "Didn't he do well!" and extend to him our grateful thanks for making the long journey from Reading.

We are pleased to welcome Mr. P. Stanwick of Alton Golf Club and we hope his association with us will be a long and happy one. Since May 1974 we have achieved a fifty per cent increase in membership!

Our very grateful thanks to Paul Huxley and staff who provided us with a very interesting evening on Tuesday, March 4, 1975, the last of our Winter Programme of lectures. The topic was "Machinery for Hire" and we were shown many slides illustrating the various machines which are available, and the many uses to which they can be put, with added comments from Mr. Huxley. Many members took the opportunity to look around the showrooms after question time.

I would like to express a very big thank you to the many members who attended all five lectures which were arranged.

Several members were also present at a Machinery Demonstration held at Alresford Golf Club later in the month. It was a very cold day for standing about watching machinery being put through its paces but interest was main-

tained to the end. The very nice lunch provided by Ransomes very soon fortified the inner man and the bar was very busy.

We are pleased to welcome the following members and we hope their association with us will be a long and happy one:—L. Savory of Rowe's of Chichester (Hon. Member); C. Jackson of Goodwood Golf Club; C. Burke of Royal Winchester Golf Club.

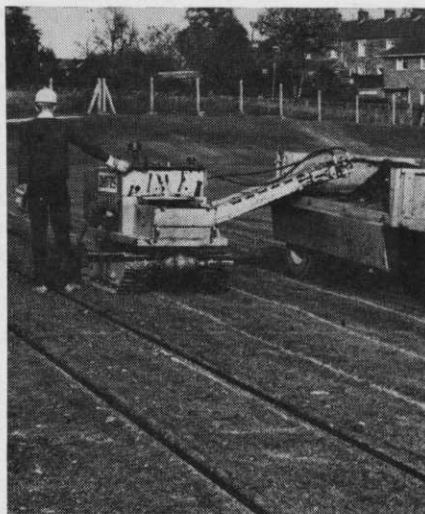
## North-West Section

*Chairman:*  
E. WALSH  
46 Peasley Close,  
Longbarn, Padgate,  
Warrington.

*Hon. Secretary:*  
H. M. WALSH  
34 Kingsfold Close,  
Brightmet,  
Bolton, Lancs.

OUR THANKS to Mr. A. Lees and Mr. R. A. Dodds of S.A.I. for the well presented lecture, re feeding of grasses and cultivation required to assist bacteria in soil, to obtain maximum benefit from fertilisers, and help in root development: this was the February talk.

[Turn to Page 25]



**DAVIS** Drain or irrigate your  
course with a  
DAVIS Trencher.

**TRENCHER PLANT SALES**

DOVE FIELDS-UTTOXETER-STAFFS  
Phone: Uttoxeter 3731 (STD code 088 93)

# R. C. CRAIG

AND CO. LTD.

SPECIALISTS IN THE REPAIR AND  
MAINTENANCE OF ALL TYPES OF MOWERS

\* Agents for: RANSOMES SIMS &  
JEFFERIES LTD

\* LLOYDS & CO. LTD.  
WEBBS LAWN MOWERS

\* Distributors: DENNIS BROS. LTD.

**GANG MOWERS FOR HIRE**

We will gladly call on you to advise  
on your grass cutting equipment or  
arrange demonstrations. Ring us now

\*

**153 Arch Stamford Brook  
Station, LONDON, W.6**

01-748 5415

# S. H. GOSS & CO.

WEED CONTROL

SPECIALISTS

Selective or Total Weed Control

Grass Growth Retarding

Brushwood Control

Aquatic Weeds

also

Worm Control

Fertilisers Applied

Fairoaks,

Little Warley,

Hall Lane,

Brentwood, Essex

Telephone: Brentwood 216107

## STEWARTS GRASS COMB

FOR THE MAN WHO TAKES PRIDE  
IN HIS TURF



*From the People  
who care about Service*

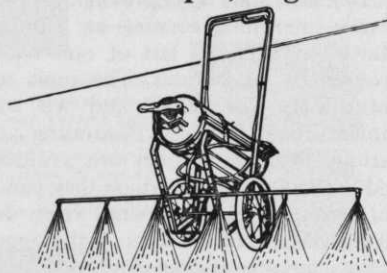
# STEWARTS

OF EDINBURGH

FINE TURF SPECIALISTS

EDINBURGH EH2 2AY 031-556 2102

## Wheel away the Weeds with Cooper, Pegler



From the single-nozzle 2-gallon Falcon to the 8-jet 20-gallon Mini Trailer Unit with an 8-foot boom for towing behind a garden tractor. Cooper, Pegler have wheeled spraying units for all horticultural purposes. Illustrated is the CP 178 Sprayer which applies up to 3 gallons at a filling. Available with 2 ft., 3 ft., and 5 ft. booms or wide-angle single nozzle spray bar, it takes all the weight of weeding off your shoulders.

Details of the full range from  
COOPER, PEGLER & CO. LTD.  
THE SPRAY PEOPLE

Cooper, Pegler & Co. Ltd., P.O. Box 9/505  
Burgess Hill, Sussex RH15 9LA.  
Tel: Burgess Hill (04446) 42526



## [Section News from Page 23]

The March talk was given by Mr. J. H. Franks of Twyford's Seeds Ltd. on New Grass Strains. One of the new ones suitable for putting greens was 'Pencross'. Mr. Franks also spoke of the research and laboratory work entailed when searching for new strains of grasses, another very interesting talk much appreciated by members present, thank you again gentlemen.

Re the talk given by D. Legg of Ransomes I am sorry to say I inadvertently forgot to say 'Thank you very much' to Messrs. W. Burrows Ltd., Grafton Works, Salford, for the refreshments provided, both liquid and solid.

Our sincere thanks to the Directors of Ransomes Ltd. for their generosity, courtesy, kindness, and the warmth of their welcome on the occasion of our visit to their factory on March 10th and 11th when 32 of our members made the long trip to Ipswich, thanks for refreshment provided, also to the staff of Ransomes for their patience in answering the many questions put to them. Thanks to Mr. Guy Catchpole, Marketing Manager, for his welcome both at the factory, and the dinner Messrs. Ransomes gave for us on the Monday evening, also to Mr. Knight of Home Sales for seeing to the booking of our hotel rooms, to our old friend John Wilson for generally seeing to our welfare, to D. Degg, Ransomes Rep. who worked with me in getting the trip off the ground, also to all those people who I have not mentioned but who played a great part in making the occasion the success it was, thank you again. I must now say a very special word of thanks to Messrs. R. Daniels, Garden Centre, Wigan Road, Leyland, and Messrs. W. Burrows, Grafton Works, Salford, for their kindness in footing the bill for the coach which took us to Ipswich. a very considerable item, and a gesture greatly appreciated by all the members who travelled. Thank you once again, and now a word of thanks from me to

Robert for seeing to things while I was on holiday, Thanks, Bob.

We welcome to the Section the following new members and hope their association with us will be a happy one. J. Holt, Lowes Park Golf Club, Bury, Lancs. W. R. Jepson, Long Island Golf Club, Westhoughton, Lancs. M. Ryan, North Manchester Golf Club, Middleton, Lancs.

## Northern Section

*Chairman:*  
J. SCOTT  
Wetherby Golf Club

*Hon. Secretary:*  
W. HEELES  
7 Tentergate Close,  
Knaresborough, Yorks.  
Tel: K'boro 3851

A GATHERING of members took place at the Moor Allerton Golf Club on Thursday, the 27th March, for an open discussion. The meeting was conducted from the chair by Mr. Brian Birdsall.

In his opening remarks, the Hon. Secretary congratulated Mr. A. Robertshaw on becoming the father of a baby daughter, and also congratulated David Hannam on being appointed Superintendent of the Sports Turf Research Institute Grounds. Well done, David!

The discussion mainly centered around the suggested Wage Scale that was adopted at the Executive Meeting in March. Also discussed was the status of the Greenkeeper, and the Secretary informed the meeting of the G. D. Council's efforts for Greenkeepers.

## HUXLEYS HIRE

### FOR THE PROFESSIONAL USER

Sometimes the purchase of equipment is not economic. We offer for hire specialised machinery for that seasonal job. Send for brochure and price list.



GARDEN MACHINERY  
22/26 CHURCH STREET, STAINES, MIDDX  
Tel. Staines 51123 (3 lines)  
Also at The Dean, New Alresford, Hants  
Tel. Alresford 3222

## Southern Section

*Chairman:*

F. W. FORD  
(South Herts.)

*Hon. Secretary:*

F. W. FORD  
68 Salcombe Gardens,  
Mill Hill, London, NW7  
Tel: 959 2847

ON FRIDAY March 21, the Southern Section was again privileged to play on one of the magnificent golf courses at Walton-Heath. Despite the fact that many of the courses in and around London were closed owing to consistent rain the previous day, conditions on the New Course at Walton-Heath, playing and weather-wise, were near perfect.

Eighty-six played in the 18 hole 4 ball-better-ball stapleford and 44 points were carded by the following, results being decided on last nine holes:—

1st, J E Iddington & F W Ford.

2nd, J E Newman & Mr Downing.

3rd, J Field & T F Foster.

4th, B Streeter & Mr Chambers.

In the evening 136 people sat down to a first-class meal and among the guests were: Sir Patrick Macrory understudying for the Captain of Walton-Heath; Eric James, Chairman BGGGA and Mr C. H. Dix retiring Secretary and Treasurer BGGGA. I would like to take this opportunity on behalf of all the Southern Section to wish Mr. Dix a long and happy retirement. It was also a great pleasure to have with us on this occasion two life members Stan Morton and Bert Dash. I think I am right in saying that Stan has now been a member of this Association for sixty years.

The toast to the Association was made by Sir Patrick Macrory and reply by Eric James. Jock Glass proposed the toast to the Guests and the response on behalf of the Guests was made by Stan Taylor. Stan, a most versatile dialect comedian, concluded the dinner with a splendid entertainment.

Our sincere thanks to the Walton-Heath Golf Club for the courtesy of the course; to the ever-increasing band of helpers who chip in their help so willingly; Huxleys and Fisons for prize donation, and to everyone who contributed towards making it a memorable

day. Organizers of the Benevolent Fund Raffle were Bonzo Ryan and Derek Gould.

A warm welcome to the following new members whose names are listed below: A. REED & D. RODWAY (Royal Eastbourne), P. R. BRAMLRY & D BLUNDELL (Knole Park), R. KATES (Hillingdon), R. BISHOP of Ransomes, and to G. DARBY who has returned to the Section after a spell of five years with the East Midland. Congratulations and good wishes are in order to Archie Creese (Bognor Regis). Archie was 70 in April and plays off 11.

A poor turn out by Southern Section standards for the lecture given by Colin Head on Wednesday March 5. Colin talked with his usual expertise on "Soil Analysis and Fertiliser Recommendations—New Approach" maintaining a lively interest throughout the evening.

## Diary Dates

- |       |    |  |
|-------|----|--|
| June  | 11 | Southern Section A.G.M.  |
| July  | 31 | Midland v Southern match.  |
| June  | 11 | Sheffield Section A.G.M.<br>Mr. S. K. Arnold (President)<br>Prize. |
| July  | 9  | Annual Tournament (section):<br>Wheatley Golf Club.                |
| Sept. | 15 | Autumn Tournament, Dore<br>and Totley Golf Club.                   |
| Oct.  | 1  | East Midland—A n n u a l<br>Tournament at Birstall Golf<br>Club.   |

### HEAD GREENKEEPER

Experienced on links course. Wage by agreement (£2000) with a free 3-bedroomed flat—rent, rates and garage.

Apply Secretary  
Seascale Golf Club  
Seascale  
Cumberland

# *Supaturf*

## FERTILISERS



—that's  
what you  
need

**to maintain first-class  
sward for fairways,  
approaches and greens.**

Fertilisers, seeds, top dressings, weed-killers,  
for all seasons. Supaturf Fertilisers are scientifically  
blended from organic and inorganic ingredients

---

Supaturf Products Limited, Fenbridge Road,  
Werrington, Peterborough PE4 6BR. Tel. 72470  
*Sportsground, Park & Horticultural Supplies*

---

# The broad view

Ransomes reputation for gang mowers needs no elaboration here, we're among professionals. Two types of gang unit are available, the Sportcutter for a finish perfect for golf courses and parks, and the Magna, where finish is not the prime factor, and grass up to 8" high can be dealt with. These quick-coupling units can be used in gangs of 1, 3, 5, 7, 9, to cover a wide application of cutting tasks.

Sportcutter and Magna units can also be built into a mounted 3-unit mower for use with standard tractor 3-point linkage, cutting 7 ft. wide.

Your local distributor has the full story, which he'll be happy to tell you.

## Check these features

NEW heavy rear rolls for even faster, smoother cutting.

Impact-resistant cutting cylinders.

Universal framework eliminates build-up of grass cuttings.

Hardened steel gears for positive drive.

Quickly removable cylinder for rapid mid-season grinding.

Width of cut from 2 ft. 6 in. to 20 ft. 6 in.

Ransomes Sims & Jefferies Ltd., Ipswich.

**RANSOMES**



## Trailed Gang Mowers



**BUY OR  
LEASE**

**AVAILABLE NOW** SPORTCUTTER Mk11 and MAGNA Mk13 Units send for details