

The British Golf Greenkeeper



THE VERTIRAKES

P.V.R. (*Pedestrian Vertirake*)

– for Golf greens, Bowling greens, Cricket pitches and Tennis courts.

J.V.R. (*Junior Vertirake*)

– for Golf course greens, Bowling turf, Fine lawns etc.

T.V.R. (*Tractor Vertirake*)

– for Golf course fairways, Municipal Parks, Sports pitches.



These three machines have been designed to remove all the thatch, thus stimulating recovery and growth of strong healthy grasses. You will find that each machine will clear the difficult, dead, matted, fibrous grass that is so often so difficult to get rid of.

We have a machine for every purpose from the small golf green to the largest Municipal playing fields. One great labour saving device we have fitted on our P.V.R. model is the very large glass fibre collecting box which saves an enormous amount of time and energy that would otherwise be wasted in sweeping up afterwards.

Start your New Year off well by writing for full information on VERTIRAKES to:

Pattisson

H. PATTISSON & CO. LTD.,
STANMORE HILL WORKS, STANMORE,
MIDDLESEX.



FOUNDED 1912

Published monthly for the benefit of greenkeepers, greenkeeping and the game of golf on behalf of the British Golf Greenkeepers' Association

President:

Carl Bretherton

Vice-Presidents:

Sir William Carr
Gordon Wright
F. W. Hawtree
S. Norgate
I. G. Nicholls
F. V. Southgate
P. Hazell
D. B. Hargreaves
P. Marshall
W. Payne
W. Mountain

Chairman:

E. R. James
49 Chatsworth Road
Parkestone
Poole, Dorset

Vice-Chairman:

V. W. Smith

Hon. Secretary & Treasurer:

C. H. Dix
Addington Court G.C.
Featherbed Lane
Addington, Croydon, Surrey
CRO 9AA

Executive Committee:

Carl Bretherton (President)
G. Herrington D. H. Major
V. Smith P. McCarron
W. Heeles J. Simpson
A. A. Cockfield H. M. Walsh
H. Fry (Jun.) E. James

Hon. Auditors:

Messrs. Smallfield Rawlins & Co.
Candlewick House
116/126 Cannon Street
London E.C.4

Hon. Solicitors:

Henry Dowding, LL.B.
203-205 High Street
Orpington

The Association is affiliated to the English and Welsh Golf Unions

The British Golf Greenkeeper

CONTENTS

	Page
TAKING CARE OF TREES	5-10
MINUTES OF THE 57TH ANNUAL GENERAL MEETING OF THE BRITISH GOLF GREENKEEPERS' ASSOCIATION	12-15
DIARY DATES	16
NEWS	17
SECTION NEWS	19-22
Front Cover Picture	

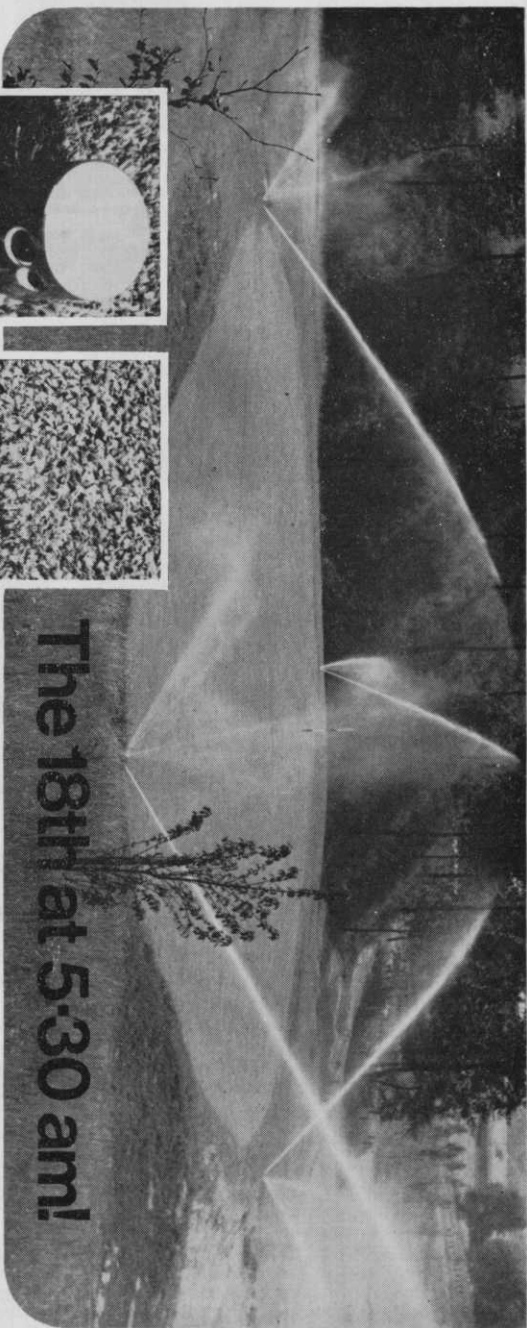
The cover illustration shows the new Cambridge Self-Propelled Sand Injector. This single-bladed machine, powered by an 18 h.p. Briggs and Stratton engine, is compact and easily transported, yet can readily achieve an output of an acre per day.

EDITORIAL ADVERTISEMENT AND SUBSCRIPTION OFFICES: Chilberton House, Doods Road, Reigate, Surrey. Telephone: Reigate 43521. SUBSCRIPTION RATE: £1.85 for 12 issues post paid. Published during the first week of each month. All rights reserved. Reproduction of original articles and photographs in whole or in part is prohibited. This Magazine shall not, without the written consent of the publishers first given, be re-sold, lent, hired out, or otherwise disposed of. Contributions and photographs of interest are invited.

LATEST COPY DATE: 1st of month prior to insertion.

TO INSERT A CLASSIFIED ADVERTISEMENT, write to the Advertisement Manager at the above address. The rate is £3.00 per single column inch. Remittance must be sent with order. Please state number of insertions required and write advertisement in block letters. Advertisements will be inserted in the first available issue.

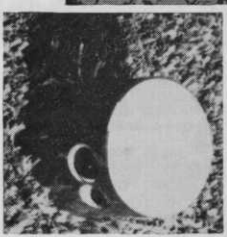
Printed by Olivers Printing Works (Battle) Ltd.



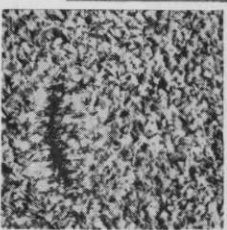
The 18th at 5.30 am!

(It could be St Andrews, Troon, Sunningdale or your club...)

Toro 'pop-up' sprinklers water greens, tees and fairways through the night, automatically. Day time stoppages are eliminated, courses play consistently and of equal importance, greenkeepers can concentrate on other more demanding work around the course. Consider these benefits then ask Wright Rain to design a Toro 'pop-up' scheme for your club! Write for details and the name of your nearest appointed installer now . . .



Now you see it . . .



Now you don't!

NEW! This Toro 'pop-up' sprinkler disappears below ground after watering. Its fully retracting head protects against damage by mowers or vandals . . .



Wright Rain

WRIGHT RAIN LIMITED

Ringwood, Hampshire BH24 1PA
Telephone Ringwood 2251



Sole UK distributors for
pop-up sprinklers systems



ABC of tree care

A GOLF COURSE takes up a large parcel of amenity land in any community, and as such places on us a responsibility to wildlife and the environment in general. For it is not only the golfer who enjoys a well planted and tended course.

Unfortunately, on many courses the trees and shrubs are sadly neglected, and it is worthwhile to re-state the basic principles of tree and shrub care.

In common with other plants, trees and shrubs have soil preferences, and often the natural vegetation is a good indicator of the type of soil. Rhododendrons thrive on acid soils, for example, and beech on lime, but the majority of trees and shrubs are tolerant. Acid lovers are known as calcifuges, lime lovers as calcicoles; viburnum and lilacs are in this latter category.

The relative acidity and alkalinity of a soil is expressed on a pH scale 0-14; 0-7 is acid, above 7 alkaline. Most plants are happiest slightly on the acid side, rhododendrons thriving around pH5. Soils may be made more acid by bracken or sedge peat, and June-cut bracken is richer in potash, which many calcifuge plants often lack.

Calcifuge plants in limey soil often suffer chlorosis, the sickly yellow colouring of the leaves being symptomatic of this condition. Chlorotic plants may be treated with sequestrene with some success, though planting in suitable soil at the outset is wiser.

It is worth noting that a calcareous (limey) subsoil may support an acid or neutral topsoil, the lime being leached out by rainfall.

Conifers are often erroneously recommended for dry, hungry soil. Most species prefer a deep, rich loam with a low lime content. On soils of high clay, gravel or lime content, Corsican pine is suitable. Lebanon cedar (*cedrus libani*) and European larch (*larix europaea*) will tolerate 10 per cent-plus lime content. On marshy ground, *taxodium distichum* and *thuya occidentalis* are beautiful.

by PETER TAYLOR
(Course manager, Aldenham
Golf Club)

Skilful planting is a viable alternative to expensive landscaping operations. A large sheet of squared paper and pencil are inexpensive, invaluable tools in clarifying one's own ideas, and should not be frowned on. When designing a new planting, consideration should be given to widths of mowers, turning circles and labour available. The ideal foil for trees is closely-mown turf.

Deciduous trees planted too near greens can cause damage to fine turf at leaf-fall, if labour is not available to clear leaves reasonably promptly (notwithstanding ruining the perfect putt!).

Trees and shrubs can be used with great architectural effect. A half-circle of columnar conifers behind a green gives the illusion of a shorter hole, while a finger of shrubs planted into a fairway has the same directing effect on play as the bunker.

To heighten banks, pyramidal conifers of the genus *chamaecyparis* are ideal, while dry areas with little topsoil can be planted with labour-saving ground cover shrubs of the genera *vinca* and *hypericum*. Some general pointers and ideas to successful planting:

- Segregate fast growers from slow growers.
- Avoid formality except around clubhouse and car parks.
- Backbone of planting should be of definitely hardy subjects.

[Turn to Page 7]

The 100,000 Hole Golf Course

Better aeration
means
better golf

Aeration, properly carried out, creates conditions which will produce a better sward and consequently a better playing surface. Proper aeration allows air to circulate more freely around the roots thus assisting respiration.

In addition it also * ENCOURAGES BACTERIAL ACTIVITY * PROMOTES A VIGOROUS ROOT GROWTH * IMPROVES SURFACE DRAINAGE * RELIEVES COMPACTION * AIDS ARTIFICIAL WATERING * ASSISTS FERTILISERS TO REACH THE ROOTS * ENABLES TOP DRESSING MATERIALS TO BECOME INTEGRATED WITH TOP SOIL.

Remember, however, it must be *proper* aeration.

There are many aerating machines on the market but not all of them perform the function adequately.

There must be *maximum* penetration combined with *minimum* surface disturbance.

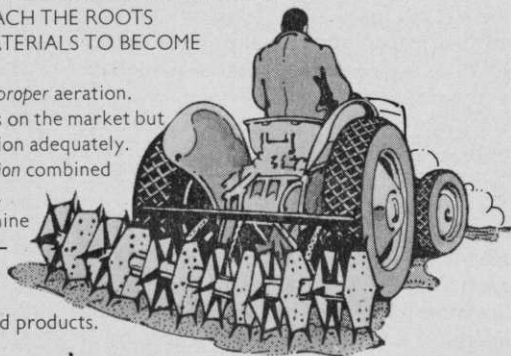
For FREE advice on the best machine

for your area why not consult us –

we are the acknowledged experts

on *all* types of aerators, turf

maintenance machinery and allied products.



From sowing to mowing.
Parkers

T. PARKER & SONS (Turf Management) LTD., Worcester Park, Surrey, KT4 7NF. Tel: 01-337 7791 or 0861

[Tree Care from Page 5]

- Create illusion of depth.
- Contrasts in silhouette and autumn colour.
- Do not plant too close; the better nurserymen's catalogues give spread as well as height.
- Near greens, upright forms are better; for example, *prunus amonogawa*.
- Do not mix conifers and deciduous trees, as the deciduous will grow faster and may overpower conifers.
- For main screens, sycamore, beech and ash are best, or Austrian, Scots and Maritime pines, if coniferous subjects preferred. The pines should be planted close and then thinned.
- The drive up to the clubhouse is the first thing that members and visitors see; a little extra care here is always worthwhile.

Planting and Transplanting. On arrival from the nursery, roots and root-balls should be thoroughly soaked if dry. If planting has to be delayed, stock should be heeled-in in trenches at an angle of about 30° to the ground, and covered to prevent breakage and drying out by the wind. Roots should also be covered with damp sacks when transporting to and at the planting site.

Evergreens continue to transpire, though to a much reduced degree, in winter. Ideally they should be planted with a ball of soil and protected against wind scorch by sacking or polythene shelters tacked to stakes around the plant. The best time to plant is before growth ceases in late September or in late April or early May, when it has recommenced. A drastic, though often successful, removal of foliage reduces transpiration and helps in the transplantation of larger subjects.

Deciduous subjects transplant more easily; the best time is as soon as the leaves have fallen in October or November, though planting can continue until early spring as long as the weather is open. Brooms and gorse are notoriously poor transplanters. Small pot-grown

plants get away quickly as plants over 2ft. from the open ground rarely survive.

Thorough initial preparation of the soil renders aftercare virtually trouble-free, and especial attention should be paid to the removal of pernicious weeds like couch and bindweed. Deep digging or "bastard" trenching of ground amply repays the extra trouble.

Strong manures and fertilisers should only be used in exceptional circumstances, though leaf soil, spent hops, bone-meal and other mild organic fertilisers help the plant to get off to a good start. Ground should preferably be prepared a month or two in advance of planting to allow soil to settle.

Planting holes should be large enough to allow roots to spread comfortably; roots should never be doubled back to fit the hole. Stakes for support should be driven in the hole BEFORE planting, the stake will be in firm soil and cannot damage roots already planted.

Short stout stakes are better than long thin ones. Within reason the upper part of trees can sway in the wind, though in exposed places trees should be staked and tied right up to the top.

Semi-mature trees can be held firm by using three stout wires in wigwam fashion, threaded through hosepipe to prevent chafing the bole and fixed to stout pegs in the ground. If a double thickness of wire is used they can be tensioned by winding with a small wooden bar. Whippy shrubs such as broom and *lonicera* need staking, otherwise they will rock in the wind.

The collar or junction of root and stem should be at ground level; a stick placed across the hole is useful in determining the correct planting depth. Broken roots should be cut off cleanly before planting. NEVER plant too deep, as this can kill.

Good friable soil should be used initially around the roots, and by a shaking up and down of the plant the soil is brought into the intimate contact with the roots which is so essential

[Turn to Page 9]

RELF & KENDALL

OF CROYDON AND BARNET

With pleasure announce that they hold the greatest concentration of lawn mower spares and lawn mower engine spares in the country

ENORMOUS STOCKS OF RANSOMES SPARE PARTS

RANSOMES

Also ASPERA, B.S.A.,
BRIGGS & STRATTON,
DENNIS, J.A.P., ROTAX,
VICTA, VILLIERS

Service Exchange items such as CUTTING CYLINDERS — MAGNETOS
**OUR FLEET OF VANS IS OCCUPIED DAILY IN MAINTAINING OUR
EXPRESS SPARE DELIVERY SERVICE**

*Telephone your
immediate requirements to*



RELF & KENDALL

406 BRIGHTON ROAD, SOUTH CROYDON,
SURREY, CR2 6XX. Tel (01) 688 0578
11 STATION ROAD, NEW BARNET, HERTS.
Tel (01) 449 8228

**We stock a comprehensive range of domestic and professional
machinery. Ask for a demonstration on YOUR ground**

GREENKEEPER

Required for 18-hole golf course in Bermuda. The successful applicant must be experienced in the maintenance of a golf course and in the use of a wide range of golf course machinery. A young, single man is preferred to share accommodation with two other British Greenkeepers.

Replies should be forwarded by airmail to—

**The Director,
Department of Agriculture and Fisheries,
P.O. Box 834,
Hamilton 5,
Bermuda.**

to arrive not later than the 27th January, 1975.

[Tree Care from Page 7]

to success. Firm well with the heel, fill in with the rest of the soil and heel well again. Treading-in can scarcely be too hard. Soil should be left about 2in. proud to allow for sinkage.

One can either use one of the excellent special ties on the market or make one's own out of folded strips of hessian sacking, bound with rot-proof string. Ties should be examined periodically for tightness; they should not be so tight as to impair sap flow or cause chafing.

Ericaceous shrubs should never be planted in pockets of peat in unsuitable soil, as they will only be shadows of themselves in suitable soil.

Watering helps settle the soil and is necessary in drought, but care should be taken not to waterlog, as the small feeder roots may rot. Transpiration can be reduced by spraying the foliage, and this can be a decisive factor in the establishment of evergreens.

Acid lovers should not, of course, be watered with hard water. Moisture may be conserved by mulching with 3in. of well-rotted manure or straw, or even by covering the soil with old plastic fertiliser sacks, masked with a thin layer of soil. Trees should be watered first as there is no point in mulching dry soil. Ideally, mulching should be carried out in spring, particularly on cold, heavy land. Newly planted shrubs and trees should be kept weeded, and mulching helps keep weeds down.

Pruning. There are basically three reasons for pruning:

1. To beautify the appearance of the plant;
2. To improve the health of the plant;
3. To improve the quality and/or size of the flowers.

Dead, weakly or overcrowded shoots should always be removed, together with crossing branches where disease can enter at the point of rubbing. The centre should be kept open to allow light penetration. Successful pruning

depends on cutting back to healthy wood.

Overcrowded shoots result in weak, unfruitful wood and should be shortened to an eye, bud or branch facing outwards. Lower branches should not be removed all at once, as sudden exposure of the bole may result in the bark being killed.

As a general rule shrubs that flower on current year's wood should be pruned in February or March. Early flowering shrubs like forsythia are best pruned after flowering by cutting out old wood, and thereby allowing new wood to mature before winter.

A rotation system to encourage flowering can be followed:

1. Two-year wood: remove after flowering.
2. One-year wood that is fairly mature takes place of two-year wood.
3. Young shoots of good shape and position to follow one-year.

For weeping trees a lofty trunk is desirable for the best effect.

To prevent tearing or splitting, larger branches should be undercut by a quarter to a third, and if really heavy, taken down in pieces. Ideally work should be carried out in November. Cuts in branches over 1in. thick should be painted over with coal tar, bitumen or a specialist proprietary compound like Arbrex to prevent fungal disease and encourage callousing over.

Pruning of conifers is not recommended, though trees of some species can be reshaped by cutting branches right back to the main trunk. Hollies, yew, box and other similar evergreens are usually pruned in August, when growth is practically finished, or in early spring.

Hedges should always be cut wedge-shaped, so the bottom leaves can receive their share of sunlight. This of course only applies to the more formal hedge. Azalea, fuchsia and rose hedges can be pruned in the usual way.

[Turn to Page 10]

[Tree Care from Page 9]

Cavity work is rather specialised, but there is no reason why the ground staff cannot carry it out. Cavities are the result of broken branches or badly removed branches leaving snags, or lack of wound treatment. Prevention is better than cure.

All rotten material should be taken out right back to clean, healthy wood, leaving a smooth surface. Spray with Cuprinol or 20% phenol solution, and paint with coal tar or Arbrex. Rough surfaces should be abhorred, as they hold fungal spores. Cavities that hold water can be drilled at the bottom to drain and then treated as ordinary cavities.

Cavities were often filled with brick or concrete, smoothed over and painted with tar dust just below the cambium layer, so the wound could heal over. A recent technique uses expanded polystyrene, which is light and allows movement of the timber.

Sources of trees and shrubs can be found in the specialist press.

Honey Bros. of Peammarsh carry an excellent range of tree-care equipment, and their catalogue is well worth having.

For further information the following books (a selected list only) may be consulted with confidence:

Le Sueur, A. D. C.; *The Care and Repair of Ornamental Trees.*

Royal Horticultural Society's *Dictionary of Gardening.*

Hadfield; *Trees and the English Landscape.*

Bean; *Trees and Shrubs Hardy in the British Isles.*

Haworth-Booth; *Effective Flowering Shrubs.*

Osborn; *Shrubs and Trees for the Garden.*

Kingdon-Ward; *Berried Treasure* (winter colour).

Chaudun; *Ornamental Conifers.*

Unfortunately not all are in print, but your local library will get them on the inter-loan schemes.

TREES — CONIFERS — SHRUBS

We supply all types of trees, conifers and shrubs suitable for screening, shelter, hedging or specimen planting.

A first class supply and planting service is offered and our skilled staff are available for advice and planting anywhere in the U.K.

For quotation by return of post please send full details of your requirements.

Many of our trees, conifers and shrubs are available in extra large sizes established in containers for all year round planting.

We also have available large quantities of the versatile

CUPRESSOCYPARIS LEYANDII

The fast growing conifer producing superb dense screening, hedging or shelter belts etc. Large stocks of established leyland cypress are always available in heights up to 8'-0". Containerised caned and tied, all are well graded for first quality only. Please send for list.

CONWAY NURSERY

STATION ROAD, LOWER STONEDON, HENLOW, BEDS. SG16 6JN
Telephone Henlow Camp (046-272) 339 or 519

Merits of sand

D. C. Bean
Purdur Farm Lane,
Ipswich.

Sir,

The article in your October issue about sand for golf courses, reproduced from a publication of the United States Golf Association, is of much interest to one who was involved, some two years ago, in assessing the merits of various sands for bunkers.

The references to 16 mesh and 60 mesh screens and the particle size ranges used in the United States to define coarse, medium and fine sands do not appear to correspond with British practice. Here, coarse sand particle size is 2.0 to 0.60mm., medium sand is 0.60 to 0.20mm., and fine sand is 0.20 to 0.06mm. There is a range of British Standard sieves from No. 7 to No. 200, to cover the classification of sands into these grades. In the United States, coarse sand is defined to be smaller and fine sand to be larger than the British grades.

The specification recommended for bunker sand—1.0mm. to 0.25mm. with 75 per cent in the range of 0.5mm. to 0.25mm. and preferably of rounded particles—may well be ideal. The nearest specification in British terms would be that all should pass a No. 14 sieve (1.2mm.), 75 per cent should pass a No. 25 sieve (0.60mm.) but be retained on a No. 52 sieve (0.30mm.), and all should be retained on a No. 72 sieve (0.21mm.), but where can sand in such a narrow range of size be obtained at any reasonable cost?

The quantities of sand used by golf clubs are insignificant in a supplier's output and to produce to such a tight specification would probably be very costly. Sands of such a type may be found naturally in certain isolated locations but, unless the golf course is nearby, transport costs will make purchase out of the question.

It would be useful to have comment on the U.S. specification from knowledgeable sources in this country, and to know if the sands in bunkers on championship courses such as Muirfield, Royal Lytham and St. Annes and others are to any particular particle size specification.

Experience of playing a number of good, but not necessarily championship, courses suggests that bunker sand is often that obtainable at least cost, sometimes with a silt and clay content, soggy in wet weather and caked hard in dry. The player suffers a twofold penalty.

Two years ago no specification for bunker sand could be found, so in general terms the criteria were freedom from silt and clay likely to cake and obstruct free drainage, avoidance of very fine sand liable to be blown away by wind, a maximum particle size unlikely to damage mower blades, freedom from organic matter, and a neutral but not alkaline condition.

Regard was also given to Mr. F. W. Hawtree's statement in the British Golf Greenkeeper for October 1971: "Our inland sites use a coarse washed sand free of fines at one end of the scale and of small stones at the other. An even particle size gives the least binding."

The list of criteria could be expanded, but how much better it is to state, as our American friends have, a specification that is clear to all sand suppliers, understandable by those responsible for the construction and upkeep of golf courses, and covering a material acceptable to players.

Playing acceptability, not mentioned by the American source, is important. Golfers expect sand in which the ball will not plug and in which footmarks are minimal. Sand depth is also relevant.

One problem is that only sands used commercially on a large scale, for

[Turn to Page 17]

The annual meeting

PROCEEDINGS of the 57th annual general meeting of the British Golf Greenkeepers' Association, held at the Isle of Purbeck Golf Club on Monday September 30, 1974.

THE CHAIRMAN opened the meeting at which there were approximately 85 members present. In the absence of the president, he conducted the meeting.

Minutes. The chairman asked that, as the minutes of the last AGM had been printed in the journal, these could be taken as read. This was agreed.

Annual report. The hon. secretary read the annual report, and its adoption was proposed by Mr. Ainsworth and seconded by Mr. Fretter. The chairman asked members to stand in silence in memory of deceased members whose names had been listed in the report.

Financial statement. Copies of the accounts were passed round and the hon. treasurer reported that there was a reasonable balance in the head office funds, due to the increase in subscrip-

tions. He was pleased to say that this had not affected membership figures. The adoption of the accounts was proposed by Mr. Moore and seconded by Mr. Ford.

Executive Committee report. The Tournament Sub-Committee appointed by the Executive Committee were Messrs. James, Walsh, Smith and Major.

It had been agreed that the competition should be played from the new B.G.G.A. tees, and would be easily identifiable.

The 1975 tournament was in the

[Continued facing page]

cut for cut, your best buy...

Don't take our word for it. Simply cast your eye over the Atco Vari-Gang Mk II and look at these outstanding features -

Flexibility

Whether a single unit or towed triple is required, higher multiples or even a mounted gang mower, the Atco Vari-Gang Mk II can fulfil the need perfectly.

Simplicity -

is the keynote - both of ganging and maintenance. Cutter change for example is but a moments work with a choice of 5 or 8 bladed heavy duty cutting cylinders.

Close mowing without scalping

A 15" wheel base ensures that turf undulations can be closely followed with the minimum risk of scalping, however severe they may be.

Finally - Wise Investment

The Atco Vari-Gang is cut for cut, your best buy. So why not ask your nearest Atco distributor for a demonstration by ringing or writing to the address below, and find out for yourself.



By Appointment to
Her Majesty the Queen
Manufacturers of
Motor Mowers
Charles H. Pugh
Limited.

ATCO

as famous as the turf we cut

CHARLES H. PUGH LTD. ATCO WORKS TILTON RD. BIRMINGHAM B9 4PR
TELEPHONE: 021-772 2524. 2551.3892

[Annual meeting/Continued]

hands of the Midland Section, and Mr. V. W. Smith had been nominated as vice chairman. The section had already received the offer of the use of Walsall Golf Club for the tournament, probably in August. The hon. secretary expressed members' congratulations to Mr. Smith on his nomination.

The Executive Committee had been advised by the hon. secretary that Mr. F. W. Hawtree was resigning as editor of the Journal from October 1, 1974, and that Mr. D. R. B. Hopkins, our present publisher, had accepted the duties of editor. The hon. secretary was asked to advise all section secretaries of this change.

The Executive Committee had been advised that the funds in the Journal account, about £1,300, would be transferred to the General Fund Head Office account, and that Mr. Hopkins had offered a minimum payment of £500 a year to association funds in the future.

Mr. Goodwin proposed a hearty vote of thanks to Mr. Hawtree for his efforts as editor for 17 years, and sincere appreciation of this proposition was expressed by everyone present.

Election of officers. In the absence of Mr. Carl Bretherton, it was proposed that he should be asked to continue in office as president for the ensuing year. This was unanimously agreed.

It was agreed that the vice-presidents listed in the journal should be re-elected. Mr. D. B. Hargreave's name replacing the late Mr. William Kinsey. This was carried unanimously.

Mr. I. Scoones, chairman, proposed Mr. E. R. James as **chairman** for the ensuing year, and this was carried unanimously. Mr. Scoones handed his badge of office to Mr. James and expressed his thanks to members for the support they had given him during his year of office. He said it was an occasion which would always remain in his memory.

[Turn to Page 14]



ATCO VARI-GANG MOWER

[Annual meeting from Page 13]

and it had been a very pleasant and enjoyable period. He hoped what he had been able to do had been in accordance with the wishes of members.

Mr. James thanked Mr. Scoones and said he hoped he would be able to do as well during the coming year. He presented Mr. Scoones with a suitably engraved tankard as a sign of recognition of his services.

It was proposed by Mr. Goodwin, seconded by Mr. Payne that Mr. V. W. Smith should be elected as **vice-chairman** for the year 1974/75, and this was carried unanimously.

The chairman expressed his regret that to date no successor had been found to take over the office of **secretary and treasurer**, as had been requested by Mr. Dix for the last two years, but assured the meeting that every effort was being made to try to find somebody to fill this office.

Mr. Dix said he also was sorry that he was obliged to force the issue regarding his own wishes, and while he would not allow his name to go forward for another year, he was prepared, mainly in view of the finances involved, for which he felt responsible, to continue to act as secretary and treasurer until the end of the present financial year, April 30, 1975.

If by this time nobody was forthcoming to take over this office, he regretted that he would have to finalise the accounts and pass them to the auditors to maintain, at the same time pass on any secretarial duties for the chairman to handle.

It was unanimously agreed that the **Executive Committee** should be as nominated by sections.

The hon. treasurer reported that the services of Messrs. Smallfield, Rawlins and Co. as **hon. auditors** had again been most efficient, and at his proposal it was unanimously agreed that they be re-elected.

It was unanimously agreed that Mr. H. Dowding, who had kindly taken over

the duties of **hon. solicitor** should be re-elected for the ensuing year.

Proposition from South Coast Section:

That a letter from head office be circulated to all golf clubs inviting them to donate a sum of money each year to the British Golf Greenkeepers' Association, such contributions to be used either to improve and maintain the standard of training and educational facilities available to greenkeepers, and thus encourage their proficiency, or to be utilised in a manner which will be to the benefit of all members.

After discussion at some length, it was proposed by Mr. Scoones and seconded by Mr. Ainsworth that a letter from the Executive Committee should be forwarded to clubs, as suggested, and this was carried.

Proposition from Southern Section:

That the title Head Greenkeeper should be changed to Course Manager.

This proposition again came before the meeting and after some discussion, an amendment was proposed by Mr. Fretter, seconded by Mr. Woodward, that the title should remain as Head Greenkeeper. This amendment was put to the meeting and carried by a majority of 38 to 34.

Proposition from Northern Section:

Amendments to Rules:—

Rule 3. Delete the present wording and substitute: "the headquarters of the association should be situated in the residential area of the secretary".

Rule 16. At an annual or special general meeting, the president should be offered the courtesy of the chair. Should the president decline, or in his absence, the chairman should then proceed to take the meeting, unless he wished to extend a further invitation.

Status of Sections (B). After the wording "the committee shall meet

[Continued on facing page]

[Annual meeting/continued]

twice a year”, add: “that a further meeting could be called by the chairman for any urgent matter”.

The amendments to the above rules were discussed and after some discussion, it was proposed by Mr. Brown, seconded by Mr. Walsh that they should be unanimously adopted.

Any Other Business. Mr. A. Robertshaw said that he would be attending a meeting later this year on behalf of the

association of the Turfgrass Advisory Committee, and he would welcome any information from members concerning the priority of matters which required early consideration.

Mr. Sales, secretary of the Isle of Purbeck Golf Club, expressed a sincere welcome to members and presented the hon. treasurer with a cheque for £20 for the association.

A vote of thanks to the chairman was proposed by Mr. Plain.

Income and Expenditure Account for Year Ended April 30, 1974

	Head Office £	Sections £	1974 total £	1973 total £
INCOME				
Entrance fees	—	146.24	146.24	143
Special donations and grants	—	45.50	45.50	14
Members' subscriptions	1,462.90	1,044.35	2,507.25	1,513
Honorary members' contributions	—	15.00	15.00	43
Special donations for prizes	2.10	623.65	625.75	444
Sweepstakes and raffles, less expenses	226.97	104.28	331.25	248
Badges and ties	3.00	—	3.00	11
Advertising revenue from magazine	144.77	—	144.77	106
Interest on investments (gross)	108.57	15.76	124.33	46
Surplus on tournament expenses	—	16.35	16.35	51
	<u>£1,948.31</u>	<u>£2,011.13</u>	<u>£3,959.44</u>	<u>£2,618</u>
	£	£	£	£
EXPENDITURE				
Postage and telephone	110.57	556.12	666.69	566
Printing and stationery	115.24	93.69	208.93	141
Magazine production costs	(41.21)	—	(41.21)	78
General expenses and wages	356.28	213.21	569.49	259
Travelling	85.55	95.34	180.89	166
Artisan golfers' fees	—	1.05	1.05	1
Management	178.10	214.15	392.25	410
Symposium	350.00	—	350.00	—
Board of Greenkeeping Research Journal	—	189.40	189.40	227
Prizes	—	444.17	444.17	441
Tournament expenses	109.59	—	109.59	46
Net cost of entertaining	—	6.23	6.23	136
Cost of badges and ties after stock adjustment	—	25.34	25.34	6
Taxation	73.70	—	73.70	27
	<u>£1,337.82</u>	<u>£1,838.70</u>	<u>£3,176.52</u>	<u>£2,504</u>
Surplus for year carried to balance sheet	<u>£610.49</u>	<u>£172.43</u>	<u>£782.92</u>	<u>£114</u>

LAWN MOWER GRINDERS



A comprehensive range of superior machines designed and built to suit operators' requirements. For brochure and full details contact us now.

ATTERTON & ELLIS LTD

Dent. B.G.G. Iron Works, Haverhill, Suffolk. Tel: Haverhill 2312/3.

HEAD GREENKEEPER

Required for 18 hole course in the county of Leicestershire. Good salary and accommodation is offered to a man with experience in all aspects of this work. Please reply to Box No. 107.

HUXLEYS HIRE

FOR THE PROFESSIONAL USER

Sometimes the purchase of equipment is not economic. We offer for hire specialised machinery for that seasonal job. Send for brochure and price list.

GARDEN MACHINERY
22/26 CHURCH STREET, STAINES, MIDDX
Tel. Staines 51123 (3 lines)
Also at The Dean, New Alresford, Hants
Tel. Alresford 3222

Diary Dates

1975

- Jan. 7 Midland Section—Panel/G'keeper/Trade Rep. "Question Time". Edgbaston G.C. Time 2 p.m.
8 Southern Section Lecture — Whitbreads Social Club.
- Feb. 4 Midlands Section Lecture — Mommersteeg Int. Kings Norton. Time 2 p.m.
8 Southern Section Lecture — Whitbreads Social Club, 6.30 p.m.
- Mar. 4 South Coast Section Lecture — Huxleys, New Alresford, 7 p.m.
5 Southern Section—Whitbreads, 6.30 p.m.
21 Southern Section annual dinner, Walton Heath.
- May 14 Spring Tournament, Southern Section — South Herts.

HEAD GREENKEEPER

Required for 18 hole course. High wage in excess of £2,000 P/A to right man. Applications in confidence to R. Bell Esq., Hon. Secretary. Hindley Hall Golf Club, Hall Lane, Hindley, Wigan, Lancs.



Granular Fertilisers

IDEAL FOR FAIRWAYS
AND APPROACHES

SEND
NOW
FOR OUR FREE
'GREENKEEPING'
CATALOGUE

CANNOCK FERTILISERS LIMITED, CANNOCK, STAFFS WS11 3LW

Sand letter

[From Page 11]

example, in the construction industry or for water filtration purposes, are available in the United Kingdom at reasonable prices. Furthermore, the technical specifications for these sands to which suppliers habitually work often permit a wide range of particle size, so that insistence on close limits may cause difficulties.

Thus a lowering of standards from the ideal becomes inevitable to cost-conscious golf club committees who may be ill-equipped technically to distinguish good sand from bad.

In the experience of two years ago, it was found that the cheapest sands were contaminated with silt, clay and organic matter. Better sands, at up to twice the price, tended to be too coarse, with too great a proportion over 0.60mm. in size or too fine with too great a proportion less than 0.30mm.

The best sand, which may have approximated to the American specification, was available only from a distant source and was priced at about three times the sand actually purchased, and about six times the cost of the cheapest local product.

It is not suggested that bunker sand should necessarily be standardised throughout the country. To go so far might detract from the individual characteristics of courses in widely differing environments. Nevertheless, guidance from some recognised authority would be welcomed and would help to improve golf course standards.

Who in this country will confirm the American recommendations and express a view on the tolerance that may be permitted in the interests of cost without impairing the playing qualities of the sand?

Your action in reprinting the American article is to be applauded and may stimulate further comment from the experience of others and from sand suppliers, followed by the authoritative guidance suggested.

NEWS

WELCOME to our new chairman, Mr. E. R. James, head greenkeeper at Parkstone Golf Club, where he has been for the past eight years. Mr. James was previously at West Essex Golf Club for nine years, and before that at Kingsthorpe Golf Club, Northants, his home town, where he started his career.

A golfer, Mr. James plays off a handicap of 14. He welcomes hearing from members at his home address, 49 Chatsworth Road, Parkstone, Poole, Dorset. Telephone: Parkstone 745059.

WE ARE sorry to report the death on November 10, 1974, of Mr. Sam T. Elliot, superintendent of the Royal Montreal Golf Club since 1960.

Before taking up this post he was at Ranfurly Castle. Members of the Scottish Golf Greenkeepers' Association will remember him particularly as their general secretary from 1957 to 1960.

LITTER LIFT Ltd. of Scethrog, Brecon, announce further sales of the 16 h.p. Model 1595 litter collector to two large golf courses where they are proving highly satisfactory for leaf collection.

THE Sports Ground Irrigation Co. of St. Mary's Road, Market Harborough, have announced their appointment as official installation contractors for Buckner pop-up sprinklers for the West Country, the Midlands and Cheshire.

CRITCHLEY BROS. LTD., manufacturers of Lamflex and PVC Pipaway plastics land drainage pipes, announce that these products are now approved to British Standard BS 4962 (1973), and have been issued with kitemark approval, licence No. 5838.

Plastics drainage pipes must now carry kitemark approval to be eligible for grant-aided field schemes.

S. H. GOSS & CO.

WEED CONTROL

SPECIALISTS

Selective or Total Weed Control
Grass Growth Retarding
Brushwood Control
Aquatic Weeds
also
Worm Control
Fertilisers Applied

Fairoaks,
Little Warley,
Hall Lane,
Brentwood, Essex
Telephone: Brentwood 216107

R. C. CRAIG

AND CO. LTD.

SPECIALISTS IN THE REPAIR AND
MAINTENANCE OF ALL TYPES OF MOWERS

* Agents for: RANSOMES SIMS &
JEFFERIES LTD.

* LLOYDS & CO. LTD.
WEBBS LAWN MOWERS

* Distributors: DENNIS BROS. LTD.

GANG MOWERS FOR HIRE

We will gladly call on you to advise
on your grass cutting equipment or
arrange demonstrations. Ring us now

*

**153 Arch Stamford Brook
Station, LONDON, W.6**

01-748 5415

STEWARTS GRASS COMB

FOR THE MAN WHO TAKES PRIDE
IN HIS TURF



*From the People
who care about Service*

STEWARTS

OF EDINBURGH

FINE TURF SPECIALISTS
EDINBURGH EH2 2AY 031-556 2102

SPORTS GROUND IRRIGATION CO.

Company are proud to announce their appointment as
Official Installation Contractors
for Buckner Pop-up Sprinklers
for the West Country, the
Midlands and Cheshire.

All enquiries to:—

Sports Ground Irrigation Co.
112 St. Mary's Road,
Mkt. Harborough,
Leics.
LE16 7DX.

SECTION NEWS

A nationwide round-up of news from the branches

Golf Club), Mr. M. Wheeler-Osman (Stoneham Golf Club), Mr. E. Sales, Mr. G. Cockwell and Mr. P. Norman (Isle of Purbeck Golf Club), Mr. C. Robinson (vice-president), and Mr. E. Fox (honorary member).

Southern Section

Chairman:
F. W. FORD
(South Herts.)

Hon. Secretary:
F. W. FORD
68 Salcombe Gardens,
Mill Hill, London, NW7
Tel: 959 2847

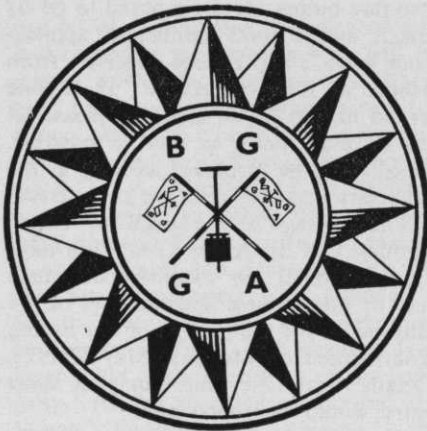
ON NOVEMBER 7 we had a very well-attended meeting, when Mr. Franks of Twyfords Seeds Ltd., Banbury, gave a talk on Grass Breeding. The talk was illustrated with a film by Barenbrug of Holland, showing how the Dutch variety of Baron Smooth-Stalked Meadow Grass was raised. It was interesting to see what a tremendous amount of work by the plant breeder goes into raising a new variety.

Mr. Franks went on to talk about the different characteristics of the Barenbrug varieties, and members showed a particular interest in the new American creeping bent grass called Penncross, which some had already tried with good results.

In thanking the speaker for a very good lecture, the chairman made reference to Mr. Franks' obvious interest in greenkeeping, shown by his recent article in Golf Illustrated about a training scheme for golf greenkeepers.

Our thanks to Bonzo Ryan for organising the raffle, proceeds of which were £9.60.

A warm welcome is extended to the following new members: A. G. McNally
[Turn to Page 20]



South Coast Section

Chairman:
E. R. JAMES

Hon. Secretary:
N. M. STIMSON
North Wilts. G.C.
Devizes.

A HAPPY New Year to one and all.

Our first winter lecture was held on Tuesday, November 5, and we wish to thank Mr. A. D. Smith of Parkers and Sisis for his talk on Golf Course Aereation and Maintenance, which was illustrated by slides of some of the latest Sisis equipment.

During question time members were vastly amused when Mr. John Payne of Lee-on-Solent G.C. produced a sample of turf and asked for a quick remedy to his thatching problem. It was felt that Mr. Payne had an 18-year replacement programme ahead of him, but nevertheless Mr. Smith pluckily agreed to hold a demonstration of the Sisis Autocrat at Lee-on-Solent the following week. We are sure it proved to be an interesting experiment.

Members are reminded that the next winter lecture will be held at Alresford Golf Club on Tuesday, February 4, 1975, at 7 p.m. The guest speaker will be Mr. Head of Chipman Limited and his topic will be Turf Management.

We are pleased to welcome seven new members and we hope their association with us will be a long and happy one. They are Mr. T. Pipe (Bramshott Hill

Southern Section

[From Page 19]

and D. V. Slaney (Sunbridge Park); P. Perkin and E. R. Green (Woodcote Park); C. Smith and G. Morgan (Langley Park); and W. Lowe (Seaford Head).

A series of two lectures by Mr. Colin Head, technical manager of Chipman Ltd., has been arranged for Wednesday January 8, and Wednesday March 5. The first will be entitled *New Techniques in Turf Drainage*, and the second *Soil Analysis and Fertiliser Recommendations—New Approach*.

Wednesday February 5 will be a forum to discuss section matters, and all members are invited to attend. Also on this occasion Mr. Bert Jennings of Flymo is to show a film he brought back from the United States.

Subscriptions are long overdue from some people. Will these members kindly consult their chequebooks and make life easier for the secretary and treasurer!

North-West Section

Chairman:

E. WALSH, ESQ.

Hon. Secretary:

H. M. WALSH, ESQ.,

Tel: 40050

OUR THANKS to Mr. D. Legg of Ransomes Sims and Jefferies for the very interesting talk and films shown on new machinery, and the changing landscape of the industrial areas, brought about by the use of modern methods of reclamation of derelict sites. Thanks, also, for the refreshments provided, solid and liquid.

The January talk will be given by K. Vertigan of Sisis Ltd., on January 20, at 7.30 p.m. The venue is as before, Swinton Park Golf Club, East Lancs. Road, Manchester. Please let us have as good an attendance as before, when 26 members made the trip.

It has been proposed that the section make a trip to Ransomes, at Ipswich, on a date in January. Owing to the distance involved this will entail an overnight stop in Ipswich, making it a

two-day outing. It is proposed to go by coach, and a good number of applications have already been received from people at the last lecture. If anyone would like to go on this trip, please let the secretary know as soon as possible. Details will be furnished as soon as the necessary arrangements are completed.

The captain and council of Royal Lytham and St. Annes Golf Club have kindly granted our members the courtesy of their course and facilities of the club house for the playing of our Spring Tournament on Monday, May 5, 1975. Details nearer the time, but your early entry would be appreciated.

We welcome the following new members and hope their association with us will be a happy one: G. Worden (Barrow Golf Club), Barrow-in-Furness, Cumbria; A. J. Platt (Barrow Golf Club), Barrow-in-Furness, Cumbria; R. Fennah (Grange Park Golf Club), St. Helens, Lancs.; S. V. Bridge (Bury Golf Club), Bury, Lancs.

We also welcome Mr. Hudson, head greenkeeper at Grange Park G.C., to our section from the Midland Section.

Midlands Section

Chairman:

G. HART

Hon. Secretary:

R. GOODWIN

2 Greenkeepers' Cottage,
Ashridge Golf Club,
Berkhamsted, Herts.

A WINTER Tournament will be held at the Sutton Coldfield Golf Club on February 26 1975, at 10.30 a.m. The tournament will be played over 18 holes Stapleford, with the new Parker and Ballinger Salver being competed for. The closing date is February 1, 1975.

Owing to the fact that golf clubs are now expecting to know the exact numbers of members playing in our tournaments for catering and other purposes, members should put their applications in to the secretary before the closing dates. Failure to do so will result in their being unable to participate.

Members of all sections will be saddened to hear of the death of Frank Cashmore on November 4, 1974, at the

age of 74. Frank was a dedicated and well-respected greenkeeper who will be greatly missed by everyone who knew him. He served the Midland Section for many years as both secretary and treasurer, and was a former chairman of the B.G.G.A. Members of the Midland Section wish to offer their deepest sympathies to Frank's wife and family.

An enjoyable and interesting day was had by greenkeepers who attended a trip to Toro U.K. We were welcomed by Messrs. A. Cavill, Ron Huntley, Jack Cogan and other executives of the company. In the morning we toured the Flymo factory and observed the assembly, testing, storage, packaging and despatch departments.

We enjoyed a splendid meal at a local hotel as guests of Toro. In the afternoon we visited both the Toro warehousing, where the containers from America are unpacked, and the new Toro assembly plant, where the machines are assembled and tested before being distributed to the agents.

Before leaving, our chairman, Vic Smith, thanked the executives of Toro for the interesting and rewarding day the greenkeepers had enjoyed. Mr. Huntley replied that it had been a pleasure to welcome the Midland greenkeepers.

It is regrettable that so few members were present to enjoy both the hospitality of Toro and the educational value of the trip.

North East Section

President:

C. N. STOREY
11 Holywell Avenue,
Whitley Bay,
Northumberland.

Hon. Secretary:

G. JEFFERIES
55 Brackenfield Road,
Framwell Gate Moor,
Durham.

THE Autumn Tournament was held on Thursday September 26, at the Tyneside Golf Club, by kind permission of the captain and committee.

Results:

Best scratch score over 27 holes: K. Barrs (Ravesworth) 119—Joseph Miller

Salver and Tankard. The Ransomes Cup and Ransomes Watch was won by W. Holden (Warkworth G.C.) for the best nett score of 114. Second was G. Sharpe (Northumberland G.C.) 115—voucher. Other placings: 3rd, S. Pope (Tyneside G.C.) 115½—radio (over 1st 9 holes); 4th, D. Faulder (Blyth G.C.) 115½; 5th, W. Bewick (Whitburn G.C.) 117½; 6th, J. Grainger (Durham City G.C.) 120½; 7th, G. Thompson (Goswick G.C.) 121½; 8th, C. Moseby (Blyth G.C.) 122½; 9th, J. Richardson (Stocksfield G.C.) 124½; 10th, B. Wilson (Stocksfield G.C.) 125½; 11th, T. Nutman (Tynemouth G.C.) 126—Jack Wroath Trophy for over 50 prize; 12th, D. McNeil (Chester-le-Street G.C.) 127.

The chairman, Mr. J. Simpson, thanked the captain and committee for the courtesy of the course and clubhouse, and introduced the captain, Mr. R. Graham of Tyneside Golf Club, who presented the prizes.

Mr. Graham said how pleased he was to have members of the North East Section as visitors, and invited us back to the course at some future date.

Mr. Simpson thanked the steward and his staff for two enjoyable meals, and Mr. Steve Pope, the head greenkeeper, for the fine condition of the course. Thanks are due to the many golf clubs and members of the trade who contributed to the prize list, and to Tom Marr, who did a grand job again with the raffle.

Last but not least, may I thank Mr. J. Simpson and Mr. Norman Fraser for their work with the score cards and money for meals. They did have a little trouble at one stage in the game, but I don't think they will want to be reminded of this; it was all put in order in the end!

Everyone was sorry that Tom Oliver was unable to be with us on this occasion. He has been very ill for the past few months, and members join in wishing Tom a speedy recovery. May he be able to join us soon on our next outing.

[Turn to Page 22]

North East Section

[From Page 21]

We were all very pleased to have our president, Mr. C. N. Storey, with us on this occasion, it is not often that he can be with us on our field days, as he is so busy with other affairs. He spoke on matters concerning work on a golf course, and said how much a golf club depended on the greenkeepers, with science and engineering being the predominant factors today. He wished the section every success and hoped to be at the next outing.

There are still some subscriptions outstanding; please pay as soon as possible, as we cannot afford to carry anyone over at the price subscriptions are today.

The following are new members of the section, and we hope their association with us will be a happy one: G. K. Sharpe (Northumberland Golf Club), R. Easton (Northumberland Golf Club), A. J. Jeffcock (Stocksfield Golf Club), S. H. Walker (representative—Chipman Chemicals Ltd.).

We wish all members of the association, and the many golf clubs and firms of the trade who so kindly support us throughout the year, a Merry Christmas and a Happy and Prosperous New Year.

Sheffield Section

President:
A. SHARDELOW
Little Timbers,
The Quillot,
Walton-on-Thames,
Surrey

Hon. Secretary:
B. V. LAX
153 Kilton Road,
Worksop,
Notts.

A PARTY of 35 members travelled to Darlington on November 14 for a visit to the Toro (U.K.) Sales and Service. We had a very interesting day enjoyed by all. We were first shown round the Flymo factory at Newton Aycliffe, then on to the Toro warehouse at Darlington.

After lunch we paid a visit to the Toro assembly factory where we saw Toro machines, which come into this country in crates, being assembled.

Our thanks to Mr. Cavill and everybody involved with our visit for their hospitality and the kind way in which we were treated.

The following meetings have been arranged for the winter programme:

Thursday February 6, 1975, 2.30 p.m., Abbeydale Golf Club; Mr. M. Schiele (Agrihort Ltd., Grimsby), Modern Grasses for Modern Golf Courses; Thursday March 6, 1975, 2.30 p.m., Abbeydale Golf Club; Mr. C. J. Head (Chipman Ltd.), Modern thinking on the use of fertilisers.

We hope as many members as possible will attend our meetings and help maintain the keen interest in section activities shown in the past.

Welsh Section

President:
J. BIRD

Treasurer:
D. C. OLIVER
Lynwood,
Lwynpia,
Rhondda,
Glam.

WOULD ALL members who have not paid their subscriptions please send the money to Mr. M. Geddes, 23 Fenton Place, Porthcawl. If subscriptions are not paid, Journals will have to be stopped.

If any member has changed his address in the past 12 months or intends to do so in the future, please write and inform the secretary.

Members who do not receive journals should contact the secretary, who has a number of spare copies.

Amended Handicaps

M. Jones	7 to 8
D. Jones	8 to 9
M. Parry	9 to 11
J. Sarsby	10 to 12
E. Thompson	10 to 12
G. Cox	9 to 11
J. Borja	24 to 18

Congratulations

Congratulations to Mr. Henry Stead on his new appointment as Head Greenkeeper at Bargoed Golf Club. Well done Henry, may your reign be a long and prosperous one.

A HAPPY NEW YEAR TO ALL OUR READERS



FYLKING

TURF GRASS

**mightiest
blade
growing**

FYLKING SMOOTH STALK MEADOW GRASS

'FROM QUALITY CONSCIOUS SEED DISTRIBUTORS'

The Champion, a hardy Viking blade, originating in Svalof, Sweden, Fylking Smooth Stalked Meadow Grass excels on every count.

✓DISEASE RESISTANCE

✓LOW CUTTING HEIGHT TOLERANCE

✓WEAR TOLERANCE

✓RAPID ESTABLISHMENT

✓CERTIFIED SEED QUALITY

✓BRITISH TESTED

Smoothie

To see the 10-blade cutting cylinder of the Auto-Certes whirring smoothly across a golf green is the surest way of appreciating what a truly splendid piece of machinery this famous mower is. And the finish rolling out behind the two-part landroll is a delight to anyone who really cares for fine turf. For a superb finish to golf greens, cricket squares and bowling greens Ransomes Auto-Certes is unsurpassable. Your local distributor would like you to see it for yourself. Contact him now.

Check these features

Choice of 18" or 20" cut.

Separate landroll and reel clutches allow precision control.

NEW high speed gearing on 20" Auto-Certes ensures a smooth 135 cuts per yard.

NEW airflow grassbox ensures full capacity filling, reduces emptying time.

The 10-knife impact-resistant steel cutting cylinder stays razor-sharp for longer.

Single-point height-of-cut from $\frac{1}{8}$ " to $\frac{3}{4}$ " at a microscopic $\frac{1}{64}$ " at a time.

Power-driven transport wheels mean quiet and easy site-to-site transportation.

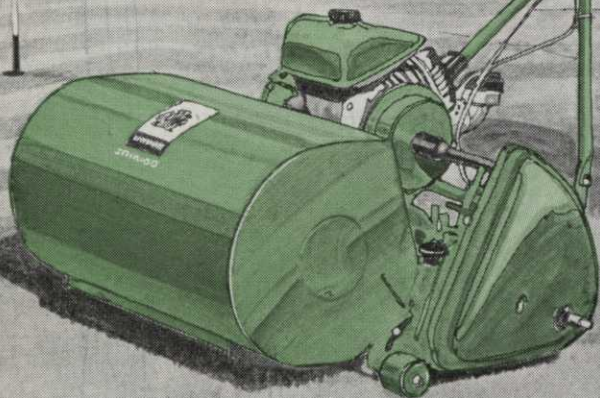
Brush and comb set optional extra for turf grooming.

Ransomes Sims & Jefferies Ltd., Ipswich.

RANSOMES



18" & 20" Auto Certes



**BUY
OR
LEASE**