

The British Golf Greenkeeper



MAY 1973

5p

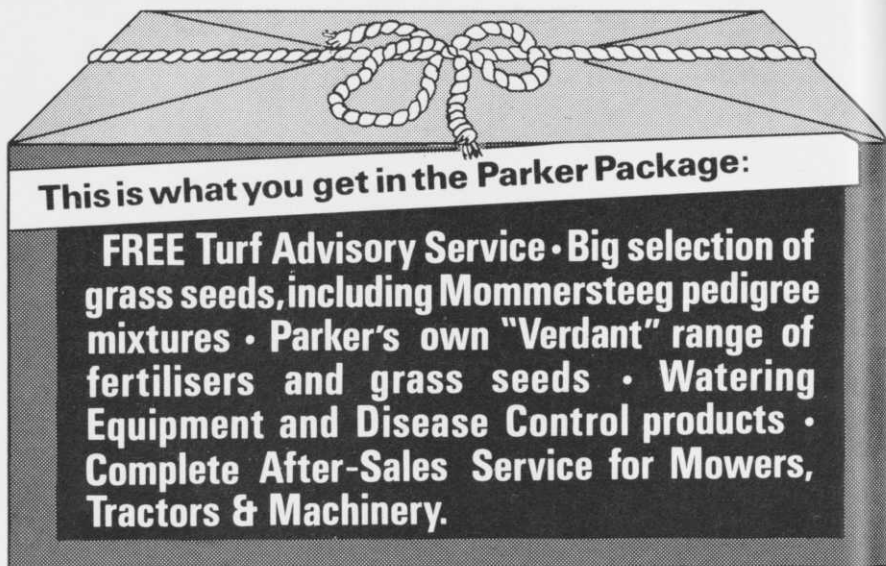


THE



PARKER PACKAGE

Everything you need in turf maintenance & equipment



And there's more for you in the Parker Package!

Parker are main distributors for Leyland Tractors
Sisis • Lodge • Ransomes • Dennis • Hayter • Allen
Flymo • May & Baker • Synchemicals • Proctor Nets
Perfecto Golf Accessories.

PARKER

Find out more about the Parker Package.
Write for our complete catalogue.

T. PARKER & SONS (Turf Management) LTD.

Worcester Park, SURREY.

Tel: 01-337 7791 (10 lines) 01-337 0861.



THE BRITISH GOLF

GREENKEEPER

HON. EDITOR: F. W. HAWTREE

FOUNDED 1912

PUBLISHED MONTHLY FOR THE
BENEFIT OF GREENKEEPERS,
GREENKEEPING AND THE GAME OF
GOLF BY MEDIA PROMOTION LTD
ON BEHALF OF THE BRITISH GOLF
GREENKEEPERS ASSOCIATION

No. 336 New Series

MAY 1973

President:
CARL BRETHERTON

Vice-Presidents:
SIR WILLIAM CARR
GORDON WRIGHT
F. W. HAWTREE
S. NORGATE
I. G. NICHOLLS
F. V. SOUTHGATE
P. HAZELL
W. KINSEY
P. MARSHALL
W. PAYNE
W. MOUNTAIN

Chairman:
H. M. WALSH
Horrobin Cottage
Old Links Golf Club, Montserrat
Bolton

Vice-Chairman:
I. SCOONES

Hon. Secretary & Treasurer:
C. H. DIX
Addington Court G.C.
Featherbed Lane
Addington, Croydon, Surrey
CRO 9AA

Executive Committee:
Carl Bretherton (President)
G. Herrington E. W. Folkes
V. Smith P. McCarron
W. Heeles J. Simpson
A. A. Cockfield H. M. Walsh
H. Fry (Jun.) T. Graham

Hon. Auditors:
Messrs SMALLFIELD RAWLINS AND
Co., Candlewick House, 116/126
Cannon Street, London, E.C.4.

Hon. Solicitors:
HENRY DOWDING, LL.B.
203-205 High Street
Orpington

The Association is affiliated to the
English and Welsh Golf Unions.

EDITORIAL AND SUBSCRIPTION OFFICES: Addington Court Golf Club, Featherbed Lane, Addington, Croydon, Surrey. Telephone: 01-657 0281. SUBSCRIPTION RATE: £1.25 for 12 issues post paid. Published during the first week of each month. All rights reserved. Reproduction of original articles and photographs in whole or in part is prohibited. This Magazine shall not, without the written consent of the publishers first given, be re-sold, lent, hired out, or otherwise disposed of.

Contributions and photographs of interest are invited.

ADVERTISEMENT OFFICE: Media Promotion Ltd, 1 Chester Close, Chester Street, London, S.W.1. Telephone: 01-235 1146. LATEST COPY DATE: 8th of month prior to insertion.

TO INSERT A CLASSIFIED ADVERTISEMENT, write to the Advertisement Manager at the above address. The rate is £2.50 per single column inch. Remittance must be sent with order. Please state number of insertions required and write advertisement in block letters. Advertisements will be inserted in the first available issue.

Printed by Dolphin Press Brighton Williams Lea Group

CONTENTS

TEE SHOTS	PAGE 9
HEAT—A SOLUTION TO SOIL COMPACTION	10
NOTICE OF MEETING	14
NEW APPLIANCES	16
SITUATIONS VACANT	18
NEWS FROM THE SECTIONS	19

Front Cover Picture:

Putting on the 12th green at Hoylake.



Dear 'Besieged' of Tunbridge Wells...

If it's any consolation, you are not alone in your difficulties.

Every week, groundsmen and greenkeepers write to me from all over the country, worried about the state of their turf; and the effect it's having on their players.

I tell them that what they really need is a proper turf service. The best one I know of is operated by Fisons of Cambridge.

Not only do they offer an unusually fine range of products; but something that is invaluable in this day and age - a sympathetic ear.

They'll send a man round to see you, free. You can talk things out and sort things out. (All their people are thoroughly trained in all aspects of turf culture.)

Then he'll recommend the best course of action in your particular case; although, of course, you'll be under no obligation.

Anyway, why don't you get in touch with them yourself? The address to write to is: Fisons Ltd., Recreational and Industrial Dept., Harston, Cambridge, CB2 5HU. Or you may call them at 0223 870312.

Meanwhile, may I suggest a stout padlock?

The complete fine turf service.

FISONS
Fisons Agrochemical Division

The British Golf Greenkeeper

The Atco Groundsman. A cut above other mowers.

The 28" and 34" Groundsman are now available in both electric and kick-starter versions.

The electric version has a 12 volt self-starter, battery and automatic charging system as a standard fitment.

Apart from this and their cutting widths, they share the same features.

To start with, they're both fitted with six heavy duty blades which give 81 cuts per yard—an unusually fine cut for their size.

They can be power driven with the cutters stationary by operating a cutter release clutch.

What's more, either machine may be used with or without the optional standard Atco trailer seat.

Another feature is the tubular handles specially designed for added manoeuvrability when turning.

They can be adjusted quickly to suit individual operator heights by means of an instant clamping lever.

There's a new 'swing over' type glass fibre grass box. It is mounted on tubular steel support arms and its lower section is recessed so it can be used with swivel front rollers.

Then there's a large capacity fuel tank which holds one gallon of petrol.

It takes one professional to recognise another. Is it any wonder then that Atco mowers are used on some of the most famous stretches of turf in this country.

ATCO As famous as the lawns we cut

For full details of Atco mowers write to Charles H. Pugh Ltd., P.O. Box 256, ATCO Works, Birmingham, B9 4PR.





Now there's a mosskiller that doesn't clog up the works.

It's the first one in a peat-based granular form. This means it flows free and easy without missing strips along the way.

It's four times more concentrated than most mosskillers you're used to.

(You need only 1oz. per square yard.)

It contains the right balance of nitrogen: as the moss goes, grass grows.

It's clean and pleasant to handle.

And it's called Hi-lite.

The choice is yours: like it or lump it.

Hi-lite Mosskiller.

FISONS
Fisons Agrochemical Division

Recreational and Industrial Dept., Harston, Cambridge, CB25HU.
Telephone Cambridge (0223) 870312.

Andrews- Power and Performance for Professionals

BLUEBIRD- THE MOST POWERFUL SCARIFIER ON TURF!



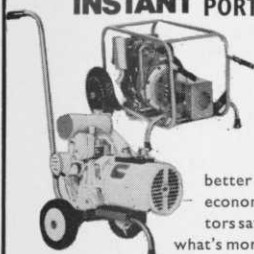
Driven by a robust and test-proven 5hp engine, this scarifier will flail out grass cuttings, bed fibre and all forms of debris to leave you with a perfect sward. Wherever professional standards count, just remember the name BLUEBIRD . . . we defy you to find better value for only £192.50.



'CYCLONE' SPREADING PERFORMANCE

These heavy-duty spreaders are built to full professional specifications. Their 10ft spreading swath covers an unbeatable 2 acres an hour. Push by hand or pull by tractor - 'CYCLONE' will give you an even spread everytime. Unrivalled performance for only £65.45. Smaller hand propelled model available.

INSTANT PORTABLE POWER



A range of 7 generators to give you immediate power anywhere, anytime. Portable generators give you a fully mechanised labour force . . . those awkward, out-of-the-way jobs, that would normally take days, can now be finished in hours. And that spells better manpower planning and smaller, more economical labour forces. Yes, portable generators save on time, labour and needless expense—what's more, they start from as little as £82.50!

SEND FOR DETAILS TODAY

Andrews Lawn Edgers Ltd.,
The Garden Machine Centre,
Sunningdale, Berks SL5 0JJ
Telephone: Ascot 21960

Send me details on:

- Generators
Cyclone spreaders
Bluebird scarifiers

Name

Occupation

Address

DGE 4

Made for the busy
professional

DRAKE & FLETCHER
PRESSURE RETAINING

MISTIFIER KNAPSACK SPRAYER

The D & F Mistifier contains its own unique pressure system. Simply fill and spray - an acre in 45 minutes. Over 90% of D & F Mistifiers are sold to professionals - because they are tough, reliable, and time saving.

Write for information.

DRAKE & FLETCHER LTD
MAIDSTONE · KENT
Tel: 55531

DRAKE & FLETCHER · MAIDSTONE · KENT

BOMFORD BANDIT 2500 steals every economy on large open space mowing...



Europe's widest Flail Mower

Power, economy and quality: the three mainstays of Europe's widest flail mower, the Bandit 2500. With a cutting width of 8' 3", it really gets down to rough overgrowth—on wide verges, river banks, airfields, parks, recreational areas, etc.

Rear mounted on the hydraulic, 3-point linkage of an ordinary tractor, the cutting head is fully guarded and discharges cut material downwards for safety. Mulchings quickly disintegrate leaving no after

collection problems. High quality cutting, low maintenance costs and sheer work-hungry versatility, make the Bandit 2500 a real winner.

Get the Bomford Bandit too—well-established rear-mounted flail mower with the 5' 7" cutting width. Fits any make of standard tractor for safe, quick, high quality cutting.

Ride with the Bandit—to new economy!

BOMFORD & EVERSLED LTD.

Evesham, Worcs., England WR11 5SW

Tel. Bidford-on-Avon (078-988) 3383 Telex 311081

The cost cutter



THE TORO 'GREENSMASTER 3'

Better greens and aprons in less time

58" riding gang mower with three 21" cutters. One operator can cut 18 greens of up to 7,500 sq. ft. each in less than four hours.

Quick micrometric adjustment of cutters from 1/8" to 11/16" for greens Immediate raising of height by further 3/16" for tackling aprons Fine cutting (144 cuts per yard) with optimum grass collection in wet conditions Terra-turf tyres leave no marks 7 mph transport between greens reduces wasted travelling time Positive hydraulic drive to cutters and traction wheels 12 hp engine with electric starting.

TORO

Another high work rate cost-cutter in the TORO range of mowing machinery – with cutting widths from 21"-180".

For further details get in touch with FLYMO INSTITUTIONAL, Greycaine Road, Watford, WD2 4PT. (Telephone Watford 41301)

Sole Distributors for TORO in the U.K. and Channel Islands.

THE PARKER PROMISE

THIS IS THE BEST INVESTMENT YOU CAN MAKE



THE RANSOMES HAHN TOURNAMENT TRIPLEX GREENS MANAGEMENT SYSTEM

- ★ 67" Cutting width
- ★ Precision greens cutting reels
- ★ All reels up front
- ★ Variable speed control
- ★ Multiple height-of-cut presets for apron mowing
- ★ Front-steering manoeuvrability
- ★ Reliable flexible cable drive system
- ★ Smooth hydrostatic drive
- ★ Individual lifts on each mower reel
- ★ Automatic reel shutoff
- ★ Ultra-quick removal of mowers and accessory units
- ★ Precision heavy-duty tee mowers
- ★ Precision triplex Verti-Cut reels
- ★ Vibrating spiker reels
- ★ Quick-couple gravity-dump trailer

CONTACT THE SPECIALISTS FOR DEMONSTRATION WITHOUT OBLIGATION NOW !

PARKER T. PARKER & SONS (Turf Management) LTD.
WORCESTER PARK, SURREY KT4 7NF
Telephone: 01-337 7791 (10 lines)

Tee Shots

A LOT OF OLD FRIENDS met again at the 42nd Annual Fine Turf Conference organised by the University of Massachusetts in Springfield, Mass. during the first week in March. Professor Joseph Troll was the organising genius with the active co-operation of his staff and the New England chapter of the G.C.S.A.A.

We met Leon St. Pierre, editor of the Chapter's Newsletter, who showed us round his course at the Longmeadow Country Club. The signs of spring were already beginning to make members hope that golf would not be too far away.

Dr. Dick Skogley was also at the conference. He was in England some years back with Fisons on a sabbatical and hopes to come again soon if he can fit into a useful programme of research.

We also met Eb Steiniger who has been at Pine Valley for the last 30 years or so and still likes it as much as the first day he went there.

About 700 attended the conference and it was also a useful meeting point for superintendents and would-be recruits to maintenance teams who had just completed one of the courses arranged by the University.

* * *

I.C.I. have brought out a new slow release nitrogen fertilizer the Gold-N. It assists growth and colour by releasing nitrogen slowly and continuously over a period of between 3 and 6 months. It thus has special importance on difficult sites prone to leaching. It comes in 56lb bags and the nitrogen is essentially present as urea – an organic amide. The Chipman Chemical Company of Dorking has already started contract spreading.

* * *

Work will start shortly on the new Hilltop and Manwoods Scheme planned by the City of Birmingham in a big sporting complex. Golfers will have both an 18 and a 9 hole course.

* * *

The City of Leicester is also adding a further 18 hole Municipal Course to its present facilities. This one will probably be done by the Parks Department itself with the assistance of consultants.

* * *

Note for the Diary

Park Administration Conference and Exhibition, Victoria Park, Hackney, 24–25 May 1973.



Grass Seeds

**FOR HIGHEST PURITY
AND GERMINATION**

SEND
NOW
FOR OUR FREE
'GREENKEEPING'
CATALOGUE

CANNOCK FERTILISERS LIMITED, CANNOCK, STAFFS WS11 3LW

Heat - A Solution to Soil Compaction

Dr. B. P. Warkentin is professor of soil science at Mac Donald College of McGill University, Montreal, Canada. His research interests are in water in clay soils. He received his Ph.D. degree from Cornell University. G. P. Laflamme teaches soils at the Institute of Technology, La Pocatiere, Que., Canada. He received his M.S. degree from McGill University in 1971. As part of his thesis work, he carried out the studies described in this article on stabilizing soils against compaction. This article is adapted from 'Heat to Stabilize Fairway Soils Against Compaction,' published in the February 1972 issue of The Greenmaster, whose permission was given for this adaptation.

by **B. F. Warkentin, PH.D.,** and **G. P. LaFlamme**

IN THE COURSE of managing turfgrass, the golf course superintendent must contend with both man and nature. The former plays a major role in creating the problem of soil compaction, for it is traffic that compacts the soil on the fairway.

Compaction is much greater on wet soil than on dry soil because the soil aggregates are weaker when they are wet. Therefore, adequate drainage is the key to keeping fairway soils from becoming heavily compacted.

Inadequate drainage is the cause of most fairway compaction problems. But even with good drainage, some clay soils with weak aggregates will become compacted. With the increasing traffic on most golf courses and the increasing demands of players to play under wet conditions, we have to think very seriously about stabilising fairways against compaction.

The worst damage from compaction of wet soils occurs in the top inch or two inches of the soil. The soil aggregates are squeezed together, eliminating the large pores through which water and air move into the soil. This decreases the infiltration rate, leaving the surface wet and leading to even more compaction. When compacted soil dries, it becomes very hard. Bare spots or weeds tolerant of these poor growing conditions appear.

It is prohibitively expensive to replace soils on the fairway with soil mixtures that resist compaction. This practice is reserved for greens, tees and other special areas. We then must look for ways of increasing the stability of the soil in place on fairways.

Since compaction occurs primarily at the soil surface, we need to think of stabilising only the uppermost layer. Materials such as lime, flyash, water repellent coatings and organic soil conditioners have been used for stabilising soils. Each of these amendments works under certain conditions; an amendment should be used only on the basis of soil tests or on the basis of experience with similar soils. Clay soil aggregates can also be stabilised by heat.

Heat Stabilisation

Heating has been used occasionally in the last 40 years to stabilise soils for road bases. The method has been used successfully in Australia and in other countries. Special equipment is required to move a flame over the soil, or to lift a layer of soil, thoroughly heat it, and redeposit it as the machine moves along. The temperature required for stabilisation depends upon the kind of soil and is usually above 500 degrees F.

Since heat stabilisation has been shown to be successful in changing certain properties of soils, it could also be useful for stabilising fairway soils against compaction. We tried soil heating on an experimental basis, both in the laboratory and in the field near Montreal

RELF & KENDALL

OF CROYDON AND BARNET

With pleasure announce that they hold the greatest concentration of lawn mower spares and lawn mower engine spares in the country

ENORMOUS STOCKS OF RANSOMES SPARE PARTS

RANSOMES

Also ASPERA, B.S.A.,
BRIGGS & STRATTON,
DENNIS, J.A.P., ROTAX,
VICTA, VILLIERS.

Service Exchange items such as CUTTING CYLINDERS—MAGNETOS
OUR FLEET OF VANS IS OCCUPIED DAILY IN MAINTAINING
OUR EXPRESS SPARES DELIVERY SERVICE

Telephone your
immediate requirements to



RELF & KENDALL

406 BRIGHTON ROAD, SOUTH CROYDON,
SURREY, CR2 6XX. Tel (01) 688 0578

11 STATION ROAD, NEW BARNET, HERTS.
Tel (01) 449 8228

We stock a comprehensive range of domestic and professional machinery. Ask for a demonstration on YOUR ground

SAND INJECTION

BY OUR SPECIALISED MACHINES
CAN TRANSFORM

WET GREENS AND FAIRWAYS

DEEP AERATION OF GREENS
BY SUB-AIR MACHINE
AT ANY TIME OF YEAR
NO SURFACE DAMAGE

We are unaware of any other machine
which penetrates to seven inches yet
keeps the greens undamaged and in play

*Very moderate charges include all transport and an
experienced operator*

Cambridge Soil Services Limited
Girton Road, Cambridge

Specialists in Science Based Drainage Tel.76002

WATERMATION

[GOLF COURSE
WATERING SYSTEMS

‘The way to lush greens’
—without tears—

Many famous clubs such as The Royal
St. Georges at Sandwich have dis-
covered the advantages of our system
why don't you.

WATERMATION

59 Meadow

Godalming, Surrey

Phone Godalming 7001

in 1970. The results showed that heating does stabilise clay soils against compaction. If an appropriate situation arises, heating could be tried on a golf course.

Lab Test Results

A clay loam soil, characterised by medium plasticity, low permeability and medium aggregate stability, was used in our studies. After being heated, soil samples were put into test cylinders, wetted overnight, drained to field capacity and compacted by dropping a 3-pound hammer from a 1-foot height 15 times.

The permeability of the compacted soil samples was then measured. The compaction and permeability apparatus is shown in Figure 1. This is the procedure recommended by the United States Golf Association for evaluation of soil mixtures.*

The results in Table I show that the heated soil had a good permeability after compaction. The untreated soil was impermeable after compaction. With this indication that heat could stabilise soils against compaction, we designed a field experiment to test heating.

Field Results

Plots were laid out on a clay loam soil near Montreal to compare heating with lime and hydrated lime as stabilising treatments. The lime was mixed into the surface soil at 8 and 40 pounds per 100 square feet. The top 2-inch layer of soil was heated with the special apparatus shown in Figure II. Nails $2\frac{1}{2}$ inches long were welded at 1-inch spacing on a $\frac{1}{4}$ -inch-thick steel plate, 2 feet by 2 feet. The plate was set onto the soil with the nails penetrating the soil to transfer the heat provided by gas burners. Soil temperature was measured with a thermocouple at a 2-inch depth. Temperatures of 400 to 500 degrees F were attained after three to four hours of heating.

The soil plots were compacted after a rain, with a heavy roller. Infiltration was then measured with an infiltrometer. After a series of infiltration measurements during two weeks, the soil was then compacted and more infiltration measurements were made.

Heated soil was consistently more permeable than untreated soil or soil to which lime had been added (Table II). Also the bulk density of the compacted, heated soil was lower than lime-treated soil, indicating greater resistance to compaction. The rate of water infiltration decreased with the second compaction, indicating that the effect of heating does not last long.

Various grass seeds were sown in samples of heated soil. Germination and growth were as good in heated soil as in the untreated soil. Therefore, heat treatment can be safely used for soils on which seed is to be sown.

Evaluation of Experiments

These experiments indicate that heating is a potentially useful method for stabilising surface soils, but the results must be considered only preliminary. Heating will be useful only for certain clay soils where swelling on wetting leads to decreased stability. These swelling clay soils can be recognised from their high plasticity. Each problem of fairway compaction has to be studied to determine the best and most economical solution. This usually requires investigation and evaluation by a trained soils man. Heating is most economically done when the soil is dry; otherwise a large amount of heat is used in dissipation of water.

A method would have to be worked out to heat soil with a moving heat source. Machines used for soil engineering projects may possibly be adapted for use on fairways. Heat could be applied to the soil in place, or a 2-inch layer of soil could be lifted, heated

*Ferguson, M. H., H. L. Howard and M. E. Bloodworth. 1960. Laboratory methods for evaluation of putting green soil mixtures. USGA Journ. 13(5): 5-8.

It takes a pro to go round 18 greens in under 4 hours

It takes a lot of work to keep 18 greens well maintained. Or rather it used to. With the Jacobsen Greens King mower you can mow 18 greens in under 4 hours. No fuss, no bother, and no grass to pick up afterwards. Specifically designed for putting greens, this mower can cut a complete green to a velvet finish without having to stop or turn round. And with golf courses in constant use, that's a great advantage.

But that's not all. All the cutting reels can be raised and lowered, engaged and disengaged by a single foot pedal. It can be adapted to mow vertically. Or brush or spike the green for aeration. That's why we call it the Greens King.

What's your handicap?

The Greens King.



Turf problems? Get to the bottom of it



The Mete-R-Matic from Jacobsen gets to the root of turf care problems – it's the only spreader which actually drives the top dressing down to the base of the turf – where it really belongs.

It spreads a full 3' wide – and at up to 225 feet per minute. And it spreads evenly, whether dry or moist. You control the depth by a fingertip adjuster. So now you don't have to rake or drag after dressing. Using the Mete-R-Matic ensures effective spreading every time.

The answer to a great many turf problems.

**The Sod Master
Mete-R-Matic.**

Write today (use the edge of this page as a coupon) to Britain's most experienced turf care specialists for leaflets, distributors, or a demonstration any time, anywhere.

ROLFE'S MINI-TRACTORS LTD

Winchester Hill, Romsey (76), Hants Telephone: Romsey 513185

and returned in a continuous operation. The fact that heating is used for stabilising road bases indicates that it is economically feasible.

TABLE I
Laboratory evaluation of permeability of heat-treated soil samples

<i>Heat Treatment Temperature</i>	<i>Time Heated</i>	<i>Permeability of Compacted Samples</i>
not heated	—	0 in/hr.
400 degrees F	½ hr.	0.1 in/hr.
400 degrees F	2 hrs.	2.8 in/hr.
400 degrees F	12 hrs.	1.1 in/hr.

TABLE II
Infiltration of water into soil plots

<i>Treatment</i>	<i>Inches of Water Infiltrated in 15 minutes</i>	
	<i>After 1st Compaction</i>	<i>After 2nd Compaction</i>
No treatment	1.25	0.50
Heated	5.00	1.50
Lime	2.00	1.50
Hydrated Lime	1.50	0.75

With grateful acknowledgements to "Golf Superintendent".

Notice of Meeting

NOTICE is hereby given that an EXTRAORDINARY GENERAL MEETING will be held at:

The English Speaking Union,
37 Charles Street
Berkeley Square
London W1

on Saturday 19th May 1973 at 12 noon

BUSINESS – To consider and vote on a proposition of the Executive Committee that Membership Subscriptions should be increased as from 1st May 1973 to:

Class A Membership	£4.00
Class B Membership	£3.00
Class C Membership	£2.00
Class D Membership	£4.00
Class E Membership	£5.00

Entrance Fee – 50% of Subscription

All additional income to be allocated to Head Office Funds.

That all New Members should pay full subscription whatever time of year they join. This would mean deleting second part of Section B, Rule 7.

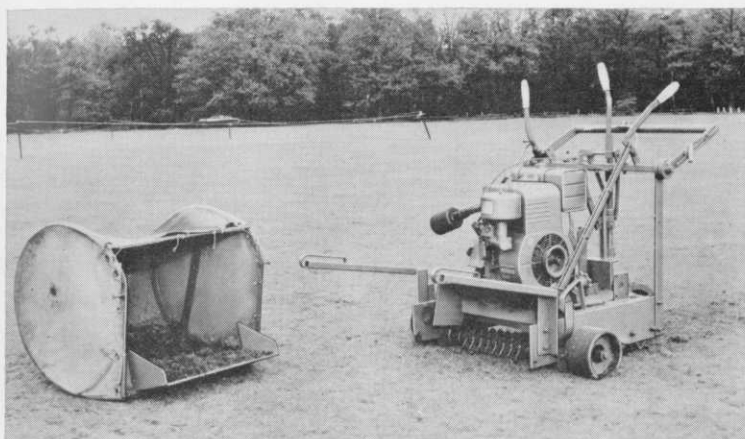
As it is often two or three months before they receive their first Journal, subscriptions of New Members joining in last quarter of year to count for following year. This should be left to the discretion of Section Secretaries.

Wage Scale Recommendation

At the Executive Meeting held on the 17th March, 1973, the Committee recommended an increase on their 1972 figures, and suggest they should now read:

Head Greenkeeper	£2000 per annum (plus accommodation) (4 weeks holiday)
First Assistant	£1500 per annum (plus 3 weeks holiday)
Assistants	£1300 per annum (plus 3 weeks holiday)
40 hour Week	
Plus statutory holidays	

THE LATEST IN TURF MAINTENANCE MACHINERY



Two Vertirake Models for thatch
removal on fine turf and out fields

From

Pattisson

H. Pattisson & Co. Ltd., Stanmore Hill
Works, Stanmore, Middx. 01-954 4171

U.K. DEBUT FOR NEW TORO TROJAN Mk 3

INTERNATIONAL attention is focussed on the latest triple-rotary riding machine for continuous heavy duty grasscutting at the Institute of Park and Recreation Administration exhibition. Known as the Toro Mk 3, it has been introduced by The Institutional Division of Flymo Limited and will make its exhibition debut at Victoria Park, Hackney on 24th/25th May.

The Trojan Mk 3 has a 60 in. cut and replaces the Trojan 50 in. Mk 2 model which has established a favourable reputation with local authorities and other large institutional users since it was introduced to the U.K. in 1970. The Trojans are particularly useful in situations with rugged grasscutting requirements.

The new model incorporates a number of additional advantages with three, 21 in. heat-treated rotary blades providing a 60 in. cut under the heavy duty 10 gauge steel cutter housing. With a more powerful, 14 hp Kohler engine, the Mk 3 has a capacity of 15 acres per day at 3.5 mph compared with 12 acres for the 50 in. version. Four-speed gear transmission is from .6 mph to 5.2 mph. Recoil start is standard.

A detachable sully provides compact storage as well as enabling pedestrian operation of the machine in restricted or difficult areas, if required.

The Toro Trojan Mk 3 will cost £948.

Other equipment on the Flymo stand at the I.P.R.A. exhibition will be diesel and petrol-engined Parkmasters for cutting up to 60 acres a day; the Toro Super Professional ride-on gang mower with capacity of up to 46 acres per day for the 11 ft. version; five and seven-blade Spartan gang units, and the versatile Toro 70in. Professional for large, formal areas. The 28 in. Roughmaster, from Morrison in New Zealand, will also be seen for the first time in a new, distinctive red livery.

FLYMO INTRODUCE POWER RAKE HIRE SCHEME

PROBLEMS ASSOCIATED with the accumulation of thatch – cut roots, stems and grass clippings which have not been decomposed – have been overcome with the introduction of a scheme for hire of a power rake.

The rake, known as the Andi-Scari Power Rake and marketed exclusively in the U.K. by the Consumer Division of Flymo Limited, Watford, removes thatch and allows the growth of fine new lawn grasses by preventing the breeding of insects and fungus in the thatch which destroy existing grass.

Depth of penetration can be varied to suit prevailing conditions by simple adjustment on the front wheel assembly. The unit is compact and can be easily lifted into the boot of the average saloon car for transportation.

The hire scheme is limited initially to the southern part of England. Daily rate of hire is between £3.00 and £4.50 and the rake will be available through Flymo Authorised Distributors and Dealers.

The rake, manufactured by Andrews of Hindhead (Developments) Limited, Surrey, has a width of 14 in., a rotor of 17 spring-tensioned swinging steel blades and is powered by an Aspera four-stroke petrol engine with pull-up recoil starter.

* * *

Flymo have produced an excellent booklet on the place of the man and machine in modern golf course management. It is very well illustrated and will interest casual readers as well as the expert. Copies can be obtained free of charge from Flymo Ltd., Watford, Herts.

PRODUCTS
turf

Bentley
Bentley
Bentley
Bentley
Bentley
Bentley
Bentley

Joseph Bentley Limited

Send new catalogue

Joseph Bentley Limited
Barrow upon Humber, Lincs.
Telephone: 501/2/3

NAME _____

ADDRESS _____

R. C. CRAIG AND CO. LTD.

SPECIALISTS IN THE REPAIR AND
MAINTENANCE OF ALL TYPES OF MOWERS

* Agents for: RANSOMES SIMS &
JEFFERIES LTD.

* LLOYDS & CO. LTD.
WEBBS LAWN MOWERS

* Distributors: DENNIS BROS. LTD.

GANG MOWERS FOR HIRE

We will gladly call on you to advise
on your grass cutting equipment or
arrange demonstrations. Ring us now

*

**153 Arch Stamford Brook
Station, LONDON, W.6.**

01-748 5415

S. H. GOSS & CO.

WEED CONTROL

SPECIALISTS

Selective or Total Weed Control

Grass Growth Retarding

Brushwood Control

Aquatic Weeds

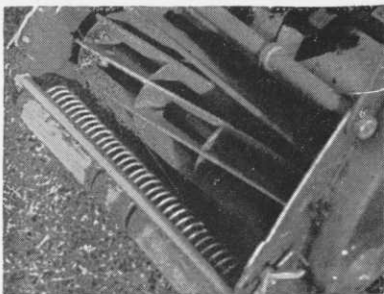
also

Worm and Mole Control

Fertilisers Applied

3, Mascalls Cottages,
Mascalls Lane,
Brentwood, Essex.
Telephone: Brentwood 216107

FOR FAST GREENS



FIT A GRASS COMB
TO YOUR MOWER

STEWART & CO.,

FINE TURF SPECIALISTS

EDINBURGH. EH2 2AY

SITUATIONS VACANT

Worsley **Urban District Council** **Parks Department**

Appointment of Head Greenkeeper

Miscellaneous Grade 6-7
(£1428-£1677)

Applications are invited from qualified Greenkeepers for the above post. Candidates must have received a sound training in the maintenance of a golf course and preference will be given to persons working in a similar capacity at the present time.

The Council is constructing a 63 acre 9 hole course at Worsley which is due for completion by Autumn 1973.

The successful applicant will control a groundstaff of 2/3 men and will be responsible directly to the Parks Superintendent.

Housing accommodation will be available.

The appointment will be from the 1st August 1973.

Forms of application may be obtained from the undersigned to whom they should be returned by not later than Monday, 28th May 1973.

ROBERT E. HUBAND
Clerk of the Council

Town Hall, Worsley,
Manchester, M28 4GD

REDDITCH URBAN DISTRICT **COUNCIL**

Parks and Recreation Department

Applications are invited for the position of Head Greenkeeper at the Pitcheroak Municipal Golf Course, Plymouth Road, Redditch

The appointment is subject to the N.J.C. terms and conditions of service. Average weekly wage including overtime and bonus - £29.

Housing accommodation will be considered in appropriate cases.

Applications to:

W. R. Pilcher, Parks and Recreation Superintendent, P.O. Box 15, Council House, Redditch, Worcs.

THETFORD GOLF CLUB require a First Assistant Greenkeeper with view to taking charge. Must be fully conversant with Course Maintenance.

Preferably from London area.

Interview expenses paid.

Apply in writing to:

**The Secretary,
Thetford Golf Club,
Brandon Road, Thetford IP24 3ND**

SCRAPTOFT GOLF CLUB **LEICESTERSHIRE**

Head Greenkeeper *required*

Good Salary

Accommodation a possibility

Reply to the Secretary

HEAD GREENKEEPER

required for NEW GOLF COURSE in RENFREWSHIRE

The Head Greenkeeper would be appointed well in advance of the opening and will be responsible for taking over the maintenance of each part of the Golf Course as it is completed.

Salary and accommodation by negotiation.

Apply in writing giving details of qualifications and experience to: The General Manager, Gleddoch House, Langbank, Renfrewshire

Classified Adverts — *continued page 24.*

News



from the Sections

Special occasions

- April 18 Welsh Section Spring Tournament
- May 8 Midland Section Spring Tournament
9 East Midland Spring Tournament
9 Southern Section Spring Tournament
- June 6 Southern Section A.G.M.
12 Sheffield Section Outing
13 East Midland Section President's Match
14 Midland Section President's Match
- July 18 Sheffield Section Annual Tournament
- Sept. 5 Southern Section Autumn Tournament
30 Southern Section Trip to Bingley
- Oct. 3 East Midland Section Autumn Tournament
10 Southern Section Secretary's Match

SHEFFIELD SECTION

Chairman:
G. HERRINGTON
(Lindrick)

By H. Gillespie
Hon. Secretary/Treasurer:
63 Langsett Avenue,
Sheffield S6 4AA

Lecture

Without doubt the best attendance we have had for a very long time turned out to welcome

May 1973

Mr. F. W. Hawtree to Abbeydale Golf Club on 1st March.

Mr. Hawtree took for his subject, 'Golf Course Architecture' and some very interesting points were put forward and the question time raised the usual well thought-out problems and Mr. Hawtree dealt with these in his stride.

We were also pleased to see Mr. Dix, who had accompanied Mr. Hawtree, and hope he enjoyed his visit to Sheffield.

Outing

The outing to Cannock Fertilisers Ltd. is on Tuesday 12th June 1973, the coach will leave Harmer Lane (Pond Street Bus Station) at 9.30 am arriving at Cannock at approx. 11.45 am. Following lunch, the party will be split into small groups and tour the works; after light refreshment the coach will leave for the return journey to arrive in Sheffield at approx. 6.00 pm.

New Member

We welcome to the section H. Smith of APCM Bradwell and hope his association will be a happy one.

Cut grass and capital outlay.

RANSOMES

LEASING



THE
NEW
sisis AUTOCRAT



The new SISIS Autocrat is the ideal aerator for all fine turf areas — golf greens, bowling green, etc. The Autocrat gives fast coverage because of its great manoeuvrability (turns in its own length) its 3 ft. width and its speed of operation. A 600 sq. yd. golf green can be tined in 30 minutes and an average bowling green in 1½ hours.

All controls are accessible from the operating position behind the machine and a self-release control lever is fitted for maximum safety. Depth adjustment up to 4 ins. is quick and simple without tools. There is a separate control for disengagement of the drive to the tines and quick transfer to the transport position without tools. Standard SISIS Auto-Turfman tines can be fitted giving the choice of slit tining, solid tining or hollow coring.

Ask for a demonstration

SISIS EQUIPMENT (Macclesfield) LTD.

Shoresclough Works, Hulley Road, Macclesfield, Cheshire SK10 2LZ. Tel: Macclesfield 26363 (code 0625)

sisis

The following members have transferred clubs:

J. Waddoups has moved from Holme Hall, Scunthorpe, to The Wilderness Club, Kent.

K. B. Heaney has moved from Wath G.C. to Wortley G.C.

C. Hawke has joined the staff at Stocksbridge G.C.

NORTHERN

Chairman:
J. SCOTT
Wetherby Golf Club

By Walter Heeles
Hon. Sec.
7 Tentergate Close,
Knaresborough, Yorks
HG5 9BJ

February Lecture

An interesting slide show was given by one of our own Members, Mr. D. G. Hanman, at the Horsforth Golf Club on Thursday, 22nd February. This was extremely enjoyable and we look forward to seeing more of David's slides.

NORTH EAST

Chairman:
MR. J. SIMPSON

By G. Jeffries
Hon. Secretary:
55 Brackenfield Road,
Framwell Gate Moor
Durham

In Memoriam

It is with deep regret that I inform members of the death of Tom Auld who was once Head Greenkeeper of Ravensworth Golf Club before his retirement some years ago. Tom was also Chairman of this section for a number of years before our present Chairman, Mr. J. Simpson.

On behalf of all members in the section, I would like to extend our deepest sympathy to Mrs. Auld and relatives in their great loss.

Appointments

C. W. Maston, one of our members, formerly Head Greenkeeper of Billingham Sythonia Recreation Club, has taken over as Head Greenkeeper Supervisor, at Lullingstone Park, Swanley. We wish him every success in his new appointment.

SOUTHERN

Chairman:
C. A. MOORE
(Stanmore)

By F. W. Ford
Hon. Secretary:
68 Salcombe Gardens,
Mill Hill, N.W.7.
Tel: 01-959 2847

March Lecture

Despite the rail strike, a capacity crowd was

present at The George where the subject of Pop-Up Sprinkler Watering Systems was thoroughly discussed and enjoyed by all. Mr. G. Wilkins of Pipecraft Ltd. and Mr. J. Hine of Wright Rain, bringing with them some of their turf irrigation equipment and leaflets, had the answers to all our questions at question time.

Again, it was the usual argument for and against automatic watering but it was evident as the evening progressed that there are a lot of systems being installed on golf course greens, approaches and tees and, according to the speaker, enquiries on fairway irrigation have been received. I think the day is in sight when even Jock Glass will be switching on.

Mr. Wilkins drew out the winning ticket in the benevolent fund draw; the lucky man was W. Machin (Cheers) and the proceeds totalled £4.65.

Twenty minutes of projector slides of the 44th Turf Grass Conference and Show, laid on by Bert Jennings, concluded the evening for a few of us, who were mostly 'Boston Trippers and very nice' it was too! Well done Bert and may I take this opportunity to thank you for all you did on that Boston Trip.

Release your capital for other uses.

RANSOMES

LEASING



New Members

Welcome to the following new members and it hoped that they will be able to attend our future lectures and golf meetings. H. Tempest (Class E), H. C. Reeve (Bramley), N. Woolvet (Malden), A. K. Palmer (Reigate Heath), J. P. Morgan (Barnhurst), F. Weaver, F. Highams and D. T. Cutler, Effingham, R. C. Glanfield and G. M. Samme of the Darenth Valley Golf Club.

A.G.M.

The A.G.M. will take place on Wednesday, 6th June, at the Hendon Golf Club and will, as last year, be preceded by an 18 Hole Medal in the afternoon, The President's Cup is to be played for.

Approximate programme - 12 to 2 pm tea off; 4.30 - 6 pm high tea; 6.30 pm A.G.M.; 7.15 pm Prize presentation. Closing Date 21st May and the same rules apply as for the Spring Tournament.

NORTH-WEST

Chairman:
R. VICKERS,
Leigh Golf Club

By H. M. Walsh
Hon. Secretary:
Horrobin Cottage,
OldLinks Golf Club,
Montserrat, Bolton,
Lancs.

Lectures

The last of this winter's series of lectures was given by Mr. Young of Chipman's Chemicals to whom we extend our thanks for the very good talk he gave our members on the new fertiliser Gold-N. I would like to take this opportunity to say thank you to all members for the very good support they have given all the speakers during this winter series of talks. Thank you gentlemen for making them a success.

New Members

We welcome to the section the following new members and hope their association with the section will be a happy one:

M. McArdle, Darwin Golf Club.
W. K. Harley, J. Phillips, Disley Golf Club.
S. Couch, Hesketh Golf Club.

MIDLAND

Chairman:
G. HART
(Gay Hill)

By R. Goodwin
Hon. Secretary:
4 Burton Old Road,
Streethay, Lichfield,
Staffs.

President's Match at Handsworth

The Annual Match against the President's team will take place at the Handsworth Golf Club on Thursday, 14th June.

I would be very pleased if greenkeepers would come early, say 3.30 pm, so that the match pairings can be arranged. I look forward to a very good evening and trust there will be a good number of greenkeepers turning out for this very fine fixture.

Lecture at Sutton Coldfield

There was a very good turn out of 50 for the February Lecture at Sutton Coldfield Golf Club on Wednesday afternoon, 21st February. Mr. R. L. Lewis, of Fison's Levington Research Station, gave a first class talk, and we are most grateful to Mr. Lewis for coming all the way to the Midlands, and to Malcolm Gee for his help in arranging the lecture. I would also like to thank the Captain and Members of the Sutton Coldfield Golf Club for allowing the greenkeepers the courtesy of the clubhouse and, in particular, Mr. Timson, Chairman of the Green, for making the arrangements.

Day Trip to Fords Tractors

Twenty eight members went on the day trip to Fords at Basildon on Tuesday, 6th March. A most interesting tour of the factory revealed

Simplify your book -keeping.

RANSOMES

LEASING



AS ONE PRO' TO ANOTHER

When you have tried all the other "Specialists" and failed to find the right gear at the right price ——— get on to us!

For over 40 years, we have wheeled and dealed in Surrey, Berks and Bucks. Nowadays, we cover most of Middlesex, Hants and Oxon, too. We handle *all* the better Manufacturers' equipment, mostly on a "Main Distributor" basis. Our inventory of Professional equipment is vast and so is the supporting stock of spares.

Greenkeepers, Groundsmen and Club Secretaries are always welcome at Sunningdale to inspect our set up, to obtain information and leaflets, or just to pass the time of day! Alternatively, if you care to write or telephone, we will deal with your enquiry quickly, honestly and fully.

ROBERT H. ANDREWS LTD.

Professional Equipment Division,
The Garden Machine Centre,
Sunningdale, Berks. Tel: Ascot. 22191

HUXLEYS HIRE

FOR THE PROFESSIONAL USER
Sometimes the purchase of equipment is not economic. We offer for hire specialised machinery for that seasonal job. Send for brochure and price list.


GARDEN MACHINERY

22/26 CHURCH STREET, STAINES, MIDDX
Tel. Staines 51123 (3 lines)

Also at The Dean, New Alresford, Hants
Tel. Alresford 3222

Warren's® A-34

BLUEGRASS

Recovers more quickly from injury, highly disease resistant, excellent dark green color, tolerates heavy shade (up to 65%). Excellent for home lawns, playing fields and golf courses.

For information contact:

HURST GUNSON COOPER TABER, LTD.
Phone Witham 3451 WITHAM, ESSEX

LAWN MOWER GRINDERS



A comprehensive range of superior machines designed and built to suit operators' requirements. For brochure and full details contact us now.

ATTERTON & ELLIS LTD
Dept. B.G.G. Iron Works, Haverhill,
Suffolk. Tel: Haverhill 2312/3.

the manufacture of tractors of all sizes from the first nut to the finished article. We are indebted to the management of Fords for this interesting excursion and our thanks to Mr. May, Sales representative to Reginald Tyldesley, Ford Agents, who arranged the trip.

New Members

We welcome to the section the following new members and look forward to seeing them at our future events:

- D. Poots, Head Greenkeeper at Maxstoke Park
- R. Jackson, First Assistant at Droitwich Golf and Country Club.
- S. Spence, Assistant at North Warwickshire Golf Club.
- W. L. Pithie, Apprentice Greenkeeper at Rugby Golf Club.
- T. Demosani and R. Morton Assistants at Coventry Golf Club, Finham.

EAST MIDLAND

Chairman:
G. DARBY

By S. Fretter
Hon. Secretary:
4 Queens Drive,
Leicester Forest East,
Leicester

Autumn Golf Tournament

The Autumn Golf Tournament will be held at Kirby Muxloe Golf Club on Wednesday, 3rd October 1973. Further details to follow.

Quiz

A quiz was held at the Three Nuns Hotel, Loughborough, on Monday, 5th March. There was a very good attendance, with four teams taking part. Quiz Master was our President, Mr. R. Bailey. The result was a tie between two teams captained by Mr. W. Cole and Mr. G. Darby. A few greenkeepers wives were there and helped the greenkeepers out with quite a few answers.

CLASSIFIED ADVERTISEMENT

Assistant Greenkeeper

required

Excellent prospects for
right man

House available if required

Golf Course Superintendent
KINGS NORTON GOLF CLUB LTD
Weatheroak, Alvechurch
Birmingham B48 7ED

Buyers' Guide

FLAGS, SIGNS, NETS, SCORE
CARDS & EQUIPMENT

ELVIN PENNANTS

68 Southchurch Avenue
Southend-on-Sea, Essex SS1 2RR
Brochure on Request

MOWER MANUFACTURERS

RANSOME SIMS & JEFFERIES

Nacton Works
Nacton Road, Ipswich
Tel: Ipswich 72222

RANSOMES LEASING



Please send full details of
Ransomes Leasing Plan

Name

Address

BGG5

Ransomes Leasing Co Ltd.,
Nacton Road,
Ipswich, IP3 9QG

THE BEST IN GOLF COURSE EQUIPMENT

'SUPERCUT' HOLE CUTTER
'FAIRWAY' ROTARY BALL CLEANER
CUPS - FLAGS - STAFFS - NOTICE PLATES
TEE MARKERS AND BINS
GREENKEEPERS'
SPECIALITY TOOLS AND MACHINES

Pattisson

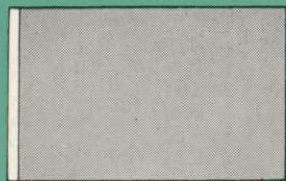
THE LARGEST MAKERS OF GOLF COURSE EQUIPMENT IN EUROPE

H. PATTISSON & CO. LTD.,

STANMORE HILL WORKS, STANMORE, MIDDX. 01-954 4171

The touch of distinction

U.S.
v
THE WORLD



Ransomes range of tasteful, but highly-visible flags and signs add lustre . . . as well as purpose . . . to every course.

The range includes

Personalised Greens flags, with your own insignia silk-screened, and a quick-change, life-prolonging plastic sleeve.

Greens flags, in red, white or yellow nylon.

Flag poles in extra-strong fibre-glass, various lengths.



Plus a wide range of Tee Plaques and Markers, Sign and Direction boards, all made in tough, long-lasting Vistolite. They are all illustrated in the latest full-colour leaflet . . . send for it now.

RANSOMES

for perfect golf course grooming

Ransomes Grass Machinery (Scotland) Ltd.

St. Ninians Road, Corstorphine, Edinburgh EH12 8AA