

The British Golf Greenkeeper



JUNE 1973

10p



Dear 'Besieged' of Tunbridge Wells...

If it's any consolation, you are not alone in your difficulties.

Every week, groundsmen and greenkeepers write to me from all over the country, worried about the state of their turf; and the effect it's having on their players.

I tell them that what they really need is a proper turf service. The best one I know of is operated by Fisons of Cambridge.

Not only do they offer an unusually fine range of products, but something that is invaluable in this day and age - a sympathetic ear.

They'll send a man round to see you, free. You can talk things out and sort things out. (All their people are thoroughly trained in all aspects of turf culture.)

Then he'll recommend the best course of action in your particular case; although, of course, you'll be under no obligation.

Anyway, why don't you get in touch with them yourself? The address to write to is: Fisons Ltd., Recreational and Industrial Dept., Harston, Cambridge, CB2 5HU. Or you may call them at 0223 870312.

Meanwhile, may I suggest a stout padlock?

The complete fine turf service.

FISONS
Fisons Agrochemical Division



THE BRITISH GOLF

GREENKEEPER

HON. EDITOR: F. W. HAWTREE

FOUNDED 1912

PUBLISHED MONTHLY FOR THE
BENEFIT OF GREENKEEPERS,
GREENKEEPING AND THE GAME OF
GOLF BY MEDIA PROMOTION LTD
ON BEHALF OF THE BRITISH GOLF
GREENKEEPERS ASSOCIATION

No. 337 New Series

JUNE 1973

President:
CARL BRETHERTON

Vice-Presidents:
SIR WILLIAM CARR
GORDON WRIGHT
F. W. HAWTREE
S. NORGATE
I. G. NICHOLLS
F. V. SOUTHGATE
P. HAZELL
W. KINSEY
P. MARSHALL
W. PAYNE
W. MOUNTAIN

Chairman:
H. M. WALSH
Horrobin Cottage
Old Links Golf Club, Montserrat
Bolton

Vice-Chairman:
I. SCOONES

Hon. Secretary & Treasurer:
C. H. DIX
Addington Court G.C.
Featherbed Lane
Addington, Croydon, Surrey
CRO 9AA

Executive Committee:
Carl Bretherton (President)
G. Herrington E. W. Folkes
V. Smith P. McCarron
W. Heeles J. Simpson
A. A. Cockfield H. M. Walsh
H. Fry (Jun.) T. Graham

Hon. Auditors:
Messrs SMALLFIELD RAWLINS AND
Co., Candlewick House, 116/126
Cannon Street, London, E.C.4.

Hon. Solicitors:
HENRY DOWDING, LL.B.
203-205 High Street
Orpington

The Association is affiliated to the
English and Welsh Golf Unions.

CONTENTS

	PAGE 5
TEE SHOTS	
BREEDING SUCCESS	6
TREE PRESERVATION ORDERS	6
LETTER TO THE EDITOR	8
1973 ANNUAL TOURNAMENT	9
SPORTS TURF RESEARCH INSTITUTE COURSES	12
A DAY ON THE RIVER	15
NEWS FROM THE SECTIONS	17
SITUATIONS VACANT	18

Front Cover Picture:

The new SISIS 'Fibamo' in use on a bowling green

EDITORIAL AND SUBSCRIPTION OFFICES: Addington Court Golf Club, Featherbed Lane, Addington, Croydon, Surrey. Telephone: 01-657 0281. SUBSCRIPTION RATE: £1.85 for 12 issues post paid. Published during the first week of each month. All rights reserved. Reproduction of original articles and photographs in whole or in part is prohibited. This Magazine shall not, without the written consent of the publishers first given, be re-sold, lent, hired out, or otherwise disposed of.

Contributions and photographs of interest are invited.

ADVERTISEMENT OFFICE: Media Promotion Ltd, 1 Chester Close, Chester Street, London, S.W.1. Telephone: 01-235 1146. LATEST COPY DATE: 8th of month prior to insertion.

TO INSERT A CLASSIFIED ADVERTISEMENT, write to the Advertisement Manager at the above address. The rate is £2.50 per single column inch. Remittance must be sent with order. Please state number of insertions required and write advertisement in block letters. Advertisements will be inserted in the first available issue.

●Printed by Dolphin Press● Brighton Williams Lea Group

Made for the busy
professional

DRAKE & FLETCHER
PRESSURE RETAINING

MISTIFIER KNAPSACK SPRAYER



The D & F Mistifier contains its own unique pressure system. Simply fill and spray – an acre in 45 minutes. Over 90% of D & F Mistifiers are sold to professionals – because they are tough, reliable, and time saving.

Write for information.

DRAKE & FLETCHER LTD
MAIDSTONE · KENT
Tel: 55531

DRAKE & FLETCHER · MAIDSTONE · KENT

Keep 'em Green

WITH

Maxicrop

Further details from:

(NO STAMP REQUIRED)

Maxicrop Limited
Freepost
Holdenby
Northampton NN6 8BR

The Atco Groundsman. A cut above other mowers.

The 28" and 34" Groundsman are now available in both electric and kick-starter versions.

The electric version has a 12 volt self-starter, battery and automatic charging system as a standard fitment.

Apart from this and their cutting widths, they share the same features.

To start with, they're both fitted with six heavy duty blades which give 81 cuts per yard—an unusually fine cut for their size.

They can be power driven with the cutters stationary by operating a cutter release clutch.

What's more, either machine may be used with or without the optional standard Atco trailer seat.

Another feature is the tubular handles specially designed for added manoeuvrability when turning.

They can be adjusted quickly to suit individual operator heights by means of an instant clamping lever.

There's a new 'swing over' type glass fibre grass box. It is mounted on tubular steel support arms and its lower section is recessed so it can be used with swivel front rollers.

Then there's a large capacity fuel tank which holds one gallon of petrol.

It takes one professional to recognise another. Is it any wonder then that Atco mowers are used on some of the most famous stretches of turf in this country.

ATCO As famous as the lawns we cut

For full details of Atco mowers write to Charles H. Pugh Ltd.,
P.O. Box 256, ATCO Works, Birmingham, B9 4PR.





THE PARKER PROMISE

THIS IS THE BEST INVESTMENT YOU CAN MAKE



THE RANSOMES HAHN TOURNAMENT TRIPLEX GREENS MANAGEMENT SYSTEM

- ★ 67" Cutting width
- ★ Precision greens cutting reels
- ★ All reels up front
- ★ Variable speed control
- ★ Multiple height-of-cut presets for apron mowing
- ★ Front-steering manoeuvrability
- ★ Reliable flexible cable drive system
- ★ Smooth hydrostatic drive
- ★ Individual lifts on each mower reel
- ★ Automatic reel shutoff
- ★ Ultra-quick removal of mowers and accessory units
- ★ Precision heavy-duty tee mowers
- ★ Precision triplex Verti-Cut reels
- ★ Vibrating spiker reels
- ★ Quick-couple gravity-dump trailer

CONTACT THE SPECIALISTS FOR DEMONSTRATION WITHOUT OBLIGATION NOW !



T. PARKER & SONS (Turf Management) LTD.

WORCESTER PARK, SURREY KT4 7NF

Telephone: 01-337 7791 (10 lines)

Tee Shots

THE 20th APRIL ISSUE of *Farmers Weekly* carries a useful feature on drainage. It also has a supplement which might appeal to some readers: 'Cash in on Grass'.



Burnham & Berrow Golf Club is expanding from 18 to 27 holes. The new nine holes will be on the seaward side of the links with one green right by the shore. The club hopes to be playing on them by summer 1975.

At the same time, the old Sunday Hole will disappear and a new 12th and 13th will enable the Sunday round to be the same as the weekday round. The present 12th plays past the front of Berrow church and cars and churchgoers oblige Sunday golfers to play an alternative arrangement, with a long walk round the back of the church.



Some time ago the Shrewsbury golf club moved to a new site and left their old course to the local authority for new roads. Now the Borough has plans to retain what is left as a nine hole course for the general public.



We looked at a new golf course site in Tenerife in April. 150 acres of lava lumps. This material varies from small boulder size down to a fairish pebble. Pushed about by the bulldozer, it is possible to get a firm level surface which looks like the bottom six inches of a green drainage layer. The local technique is then to seal this foundation with a national cement which looks rather like Breendon gravel; top it with sand and spread the top-soil. How much per hole did you say? Time alone will tell. Where tourist developments are concerned, cost does not seem to matter. And they use the same system for bananas.



The response to a long letter, from the Hon. Editor in *Golf Illustrated*, about greenkeepers and greenkeeping, was not overwhelming. One greenkeeper's wife wrote to say that she agreed with it. From golf generally, not a word.



Granular Fertilisers

**IDEAL FOR FAIRWAYS
AND APPROACHES**

SEND
NOW
FOR OUR FREE
'GREENKEEPING'
CATALOGUE

CANNOCK FERTILISERS LIMITED, CANNOCK, STAFFS WS11 3LW

Breeding Success

ALTHOUGH HIGH STANDARDS of groundsmanship can produce a fine turn from a single grass species, the maintenance costs may be high. It is for this reason that seed mixtures of two or more compatible types are usually sown. This produces a tightly-knit turf which prevents invasion from weeds and other grasses. If the constituents are chosen correctly, a uniform turf is produced. If too many types are used, or the wrong types included, then the resulting turf may be patchy in colour and texture.

Mommersteeg now have a comprehensive range of mixtures for almost every type of application. These include specials for golf tees, fairways, greens and for rough, tennis courts, bowling greens, cricket wickets and outfields, stadiums, playing fields and hockey pitches. There are also Mommersteeg mixtures for ornamental areas such as decorative parkland, lawns and building surrounds.

A development in recent years has been the introduction of Mommersteeg's Stadion. This unique fine-leaved perennial ryegrass has been specially bred for Britain's sports grounds and has proven persistency and ability to recover quickly from hard wear. Its outstanding visual feature is the dark green colour which it retains throughout Winter and Summer. It is a winter-active and summer-dormant variety, which withstands close mowing and is disease resistant.

Environmental needs

After long research, much of it in co-operation with scientific centres and plant breeders throughout the world, a series of grass strains has been bred specifically by Mommersteeg to meet important conservation needs.

Mommersteeg technical advisory service will give free advice on such particular problems as soil fertility, acidity or unusual and difficult conditions.

Seed catalogues and the booklet, 'Amenity Grass and the Environment', which was available at the Victoria Park exhibition may be obtained from the Mommersteeg Seed Company, Station Road, Findeon, Wellingborough, Northamptonshire.

Mommersteeg are Europe's largest specialist grass breeding company and one of the most outstanding plant breeders in the world. The company was founded in Holland in 1923, operates separate enterprises in Belgium, Germany and the United Kingdom, and is associated with companies in many countries all over the globe.

As well as their deep involvement in ecological study, Mommersteeg are well-known for their agricultural grassland systems and sports turf. In addition they operate a Landscape Management Division to advise local authorities, property companies, architects, public utilities and other users. An associate company, International Environmental Consultants, is responsible for advisory work on a world wide basis.

D. G. REID DISCUSSES TREE PRESERVATION ORDERS

A TREE PRESERVATION ORDER (TPO) is for the protection of trees and woodlands; to prevent needless destruction and maltreatment. It acknowledges that the community has a right to invoke safeguards where amenity is concerned. It restricts the right of an owner to do as he wishes with trees which are considered of amenity value. It transfers the decision making (whether to preserve, prune or fell) from the owner to the community (the local authority). It does not, however, transfer the ownership nor the liability for any expenses which may be incurred in management.

A T.P.O. is made by the Local Planning Authority (L.P.A.). This, in effect, is the County

AS ONE PRO' TO ANOTHER

When you have tried all the other "Specialists" and failed to find the right gear at the right price — get on to us!

For over 40 years, we have wheeled and dealt in Surrey, Berks and Bucks. Nowadays, we cover most of Middlesex, Hants and Oxon, too. We handle *all* the better Manufacturers' equipment, mostly on a "Main Distributor" basis. Our inventory of Professional equipment is vast and so is the supporting stock of spares.

Greenkeepers, Groundsmen and Club Secretaries are always welcome at Sunningdale to inspect our set up, to obtain information and leaflets, or just to pass the time of day! Alternatively, if you care to write or telephone, we will deal with your enquiry quickly, honestly and fully.

ROBERT H. ANDREWS LTD.

Professional Equipment Division,
The Garden Machine Centre,
Sunningdale, Berks. Tel: Ascot. 22191

HUXLEYS HIRE

FOR THE PROFESSIONAL USER
Sometimes the purchase of equipment is not economic. We offer for hire specialised machinery for that seasonal job. Send for brochure and price list.

 **Huxleys**
GARDEN MACHINERY

22/26 CHURCH STREET, STAINES, MIDDX
Tel. Staines 51123 (3 lines)

Also at The Dean, New Alresford, Hants
Tel. Alresford 3222

Warren's® A-34

BLUEGRASS

Recovers more quickly from injury, highly disease resistant, excellent dark green color, tolerates heavy shade (up to 65%). Excellent for home lawns, playing fields and golf courses.

For information contact:

HURST GUNSON COOPER TABER, LTD.
Phone Witham 3451 WITHAM, ESSEX

LAWN MOWER GRINDERS

A comprehensive range of superior machines designed and built to suit operators' requirements. For brochure and full details contact us now.

ATTERTON & ELLIS LTD
Dept. B.G.G. Iron Works, Haverhill,
Suffolk. Tel: Haverhill 2312/3.



Council, the County Borough Council or the Urban and Rural Council which has authority delegated to it by the County Council.

Any individual citizen or society may request a T.P.O. Such request should be sent to the L.P.A. of the area in which the trees are situated. The request may be in respect of (a) a single tree, (b) a group of trees, (c) a wood, and should refer to amenity aspect. The test applied to any request for a T.P.O. is: if the tree or woodland were to be felled or lopped would there be any loss of amenity to the neighbourhood?

If it is considered that a tree or trees are in danger of being felled, the L.P.A. may make a provisional order which takes effect immediately and continues in force for six months. Penalties for contravening apply during this period.

Penalties for contravention of an order: maximum fine for each offence is £250 or twice the timber value of the tree, whichever is the greater. Both the tree feller and the owner can be held liable.

The L.P.A. can require the replacement of any tree felled to which a T.P.O. applies. The owner of mature trees or woodlands to which a T.P.O. applies may apply to the L.P.A. for permission to fell. This will usually be granted, subject to conditions such as replacement or, in the case of woodlands, the retention of a screen to cover the scars of felling.

An owner who has incurred expenditure or loss through a refusal of consent by the L.P.A. may claim compensation, except when the L.P.A., in refusing consent have certified that the refusal is in the interests of good forestry or special amenity value. The claim should be made to the L.P.A. within twelve months of the refusal. The amount of compensation is a matter for negotiation between owner and the L.P.A. If no agreement is reached the Minister will decide.

The Minister imposes a duty on the L.P.A. to preserve trees of amenity value when granting planning permission for development and to require the planting of new trees, which may be protected by T.P.O.S. If planning permission is granted on a site already subject to a T.P.O., the trees are exempted and may be felled; but a condition may be imposed for replacements elsewhere on the site.

With grateful acknowledgements to "The Groundsman".

Letter to the Editor

Dear Sir,

I refer to Mr. Patrick Smartt's article 'MOATS' featured in the February issue of *The British Golf Greenkeeper* magazine and would correct an inference made in that article regarding the water hazard in front of the 11th Green of Downfield Golf Course.

Mr. Smartt infers that this hazard was artificially constructed as a water bunker. While I would agree that the pond was artificially constructed at some point in time, it was certainly made many years before the late James Braid designed Downfield Golf Course in 1932. When the course was being designed and constructed, Ardlar Ponds had been in existence for a long time and the architect, with great success, brought them into play as a feature of what, at that time, was the 7th hole. In respect of Mr. Smartt's comparisons in artificiality between the Swilken Burn at St. Andrews and the pond at Downfield, I would venture to suggest that the former, with its vertical and concreted banks, bears much more of the stamp of man's efforts than does the latter.

Yours sincerely,
L. S. WRIGHT,
Greens Convener, Downfield G.C., Dundee

1973 Annual Tournament

CLEVEDON GOLF CLUB SOMERSET

13th, 14th, 15th August

Programme

13th	am	18 Hole Stapleford Competition
	2.30 pm	Annual General Meeting
14th		36 Hole Scratch Cup and Prize
		36 Hole Senior Division Handicap
		36 Hole Junior Division Handicap
		18 Hole Coming of Age Cup
15th	am	18 Hole Medal Competition
	3.00 pm	Prize Presentation

ENTRY FORM (Block letters Please)

Name.....

Address.....

Club..... S.S.S.....

Section.....

Handicap.....

Tick Box if eligible for Coming of Age Cup (Age 60 and over)

Tick Box if requiring Caddy Car

Entries close 30th June 1973

Quick-change artist

The Ransomes-Hahn Tournament Triplex is a remarkable machine — so remarkable that we call it the world's first Greens Management System. The Tournament Triplex is a 12hp vehicle with hydrostatic drive, which powers four separate turf maintaining operations.

Each conversion, from superb greensmowing to utility mowing, to Verti-Cutting, to spiking takes less than a minute — and no spanner!

Greens Units A full 67" cut.

Each 23", nine-bladed cylinder can be lifted individually.

Utility Units Heavy-duty cutting cylinders and bottom blades for approach and tee mowing. Grass catchers provided with all units.

Verti-cut Units Patented twin offset blades remove 'thatch', keep greens in play even in difficult conditions.

Vibra-Spiker Now spiking takes even less time than greensmowing. High-frequency vibration penetrates to a depth of 1½" with a minimum of compaction.

The combination of this unique quick-change unit feature, full 67" swath for every operation, variable-speed units and individual unit lifts make the Tournament Triplex an investment which no club can ignore.

Your local Distributor is keen to impress you with a demonstration. Give him a call.

Ransomes Sims & Jefferies Ltd., Ipswich.

RANSOMES

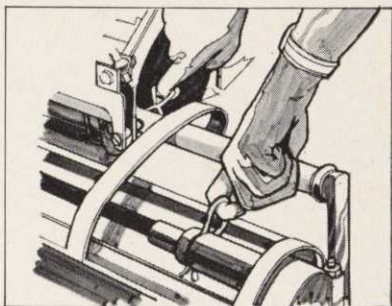


Ransomes-Hahn Tournament Triplex



Ransomes-Hahn Tournament Triplex

When an advertiser tells you that a conversion is quick it's customary to take it with a pinch of salt. But *this* time take it as fact. Trying is believing, and you can try it for yourself at your local Ransomes dealer! You simply pull the connecting pin and quick-couple cable, remove the existing unit, and slip the selected unit into place. It takes less than a minute! Honest!



Tournament Triplex Greens Unit

A full 67" of cutting width with the exclusive features of variable speed cylinder drive, giving you a cylinder speed completely independent of ground speed. Units may be operated one-down, two-down or all-down.

Tournament Triplex Utility/Tee Units

Triplex utility units use same seven-blade design as greens reels, but have heavier fairway blades to withstand approach and tee mowing. These units are ideal for approach maintenance and the precision cutting of tailored tees, and can be adjusted down to $\frac{1}{8}$ " for greens-mowing after top-dressing.

Tournament Triplex Verti-Cut Units

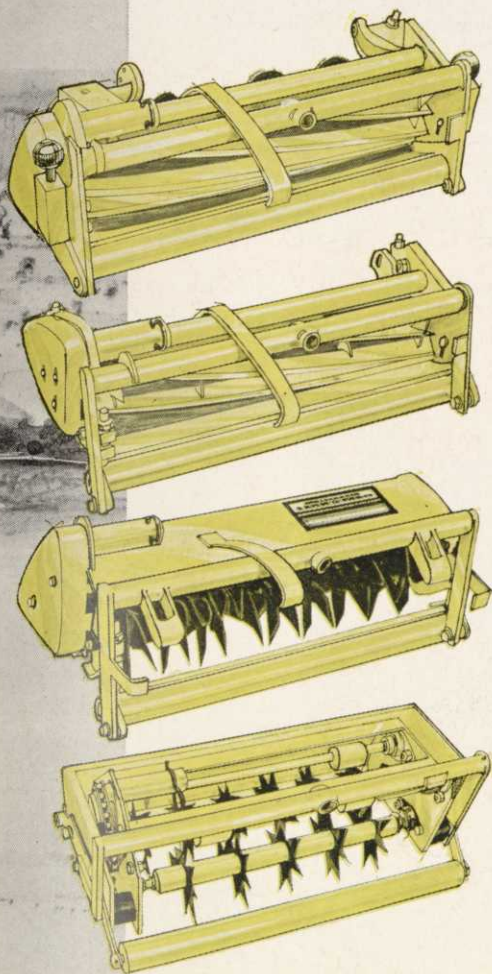
Verti-Cut units use durable, yet thin offset blades to remove thatch and grain as they begin to form. With 67" of cut (the Verti-Cut units are the same width, work at the same speed, and use the same grass catchers as the greens and utility units) and a riding vehicle, these attachments are ideal for preventing the development of thatch etc., lessening the need to take greens out of play for renovation.

Variable-speed cylinder drives provide high tip-velocity even at low forward speeds.

Tournament Triplex Vibra-Spiker

Vibra-Spiker reels use gentle high-frequency vibration to achieve deep penetration, without excessive weight, even when ground is hard and dry. Spiking (summer aeration) provides root pruning and moisture absorption, relieves surface compaction, and conserves fertilizers and fungicides by getting them immediately to the root zone. Full 67" swathe and Triplex speed make spiking a task that now takes even less time than greensmowing. Spiker penetrates to depth of 1½".

**Ransomes-Hahn
Tournament Triplex
- the world's first Greens
Management System.**



SPORTS TURF RESEARCH INSTITUTE COURSES



26th–30th March, 1973

Back Row: D. Fleming, Milngavie G.C.; A. Morton, West Byfleet G.C.; I. S. Nelson, Hayling G.C.; R. Hargreaves, West Essex G.C.; S. Bridges, South Herts G.C.; H. McAddy, Swinton Park G.C.; C. McDougall, Murrayfield G.C.; W. M. Smith, Dollar G.C.; D. G. Manning, Rochford Hundred G.C.; M. D. Rogerson, Private Subscriber.

Middle Row: A. B. Muggeridge, Shoreham by Sea U.D.C.; L. M. McGill, Erskine G.C.; D. Thompson, S.T.R.I.; D. Flanagan, West Bradford G.C.; S. Day, Doncaster R.D.C.; J. Coates, Doncaster R.D.C.; F. R. Lister, Shirley Park G.C.; D. Brown, Caldwell G.C.; A. T. Toase, Oakdale G.C.

Front Row: W. N. Henderson, Civil Service – Newcastle; E. Roberts, Runcorn G.C.; J. R. Johnson, Ganton G.C.; M. Foulds, Doncaster R.D.C.; W. J. McGhan, London Borough of Lewisham; T. Clarke, Hermitage G.C.; E. Armstrong, Durham City G.C.; M. Smith, Farnham G.C.





9th-13th April, 1972

Back Row: G. D. Balmer, Brize Norton Depot; A. P. Tufnail, Swaffham G.C.; J. Walsh, R.A.F. Binbrook, Yorks.; A. Porter, Clacton-on-Sea G.C.; E. E. Fisher, Lichfield Depot; E. Leach, Catterick Camp; R. F. Graham, East Kilbride Works Depot; C. T. Caister, Kent County Council.

Middle Row: D. W. Summerell, Clevedon G.C.; P. Keating, Castletroy G.C.; J. L. Hewson, Lee-on-Solent Depot; D. L. Hankins, Minchinhampton G.C.; C. Price, Sealand-Flints Depot; R. P. Upchurch, Tonbridge U.D.C.; R. Sleaford, Cranwell Depot; P. Conneely, Connemara G.C.

Front Row: G. B. Coatsworth, Bishop Auckland G.C.; R. W. Hooks, R.A.F. West Raynham; D. A. J. Brewer, Norton Manor Depot, Somerset; J. H. Fulford, Sheffield Amateur Sports Club; P. Cook, Connemara G.C.; D. C. Cartledge, St. George's Hill G.C.; I. P. Rickman, Ferndown G.C.

LEFT, opposite

2nd-6th April, 1973

Back Row: T. C. Talbot, Upminster G.C. Ltd.; N. G. Whitaker, Abbeydale G.C.; D. J. Baker, High Post G.C. Ltd.; G. E. Lloyd, Hillside G.C.; P. D. Facey, Copt Heath G.C.; C. Whitfield, Bingley U.D.C.; J. Risbridger, Beaconsfield G.C.; G. Parkin, Kedleston Park G.C.

Middle Row: D. W. Stonehouse, Golfclub Pfalz; A. Clancy, English Clays Lovering Pochin & Co. Ltd.; W. Monslow, Llangollen & District G.C.; C. Sealey, Lansdown G.C.; D. A. Barker, Nuneaton G.C.; B. Graham, Cockermouth G.C.; D. Clark, Royal Portrush G.C.; M. Lunn, Silkstone G.C.; G. Armson, Notts. G.C.

Front Row: A. Lowrey, Civil Service - Newcastle; J. Hinton, Castle Eden and Peterlee G.C.; M. McArdle, Darwen G.C.; J. R. Brace, Guest, Keen and Nettlefolds; A. Hyndman, Shiskine Golf and Tennis Club; B. Richardson, Effingham G.C.; S. Harrison, Grattan Warehouses Ltd.; A. Hopkins, Ipswich G.C.

PRODUCTS
turf
 Bentley
 Bentley
 Bentley
 Bentley
 Bentley
 Bentley
 Bentley

FREE!

Joseph Bentley Limited

Send new catalogue

Joseph Bentley Limited
 Barrow upon Humber, Lincs.
 Telephone: 501/2/3

NAME _____

ADDRESS _____

SAND INJECTION

BY OUR SPECIALISED MACHINES
 CAN TRANSFORM

WET GREENS AND FAIRWAYS

**DEEP AERATION OF GREENS
 BY SUB-AIR MACHINE
 AT ANY TIME OF YEAR
 NO SURFACE DAMAGE**

We are unaware of any other machine which penetrates to seven inches yet keeps the greens undamaged and in play

Very moderate charges include all transport and an experienced operator

Cambridge Soil Services Limited
Girton Road, Cambridge
Specialists in Science Based Drainage Tel.76002

R. C. CRAIG AND CO. LTD.

SPECIALISTS IN THE REPAIR AND MAINTENANCE OF ALL TYPES OF MOWERS

- * Agents for: RANSOMES SIMS & JEFFERIES LTD.
- * LLOYDS & CO. LTD.
 WEBBS LAWN MOWERS
- * Distributors: DENNIS BROS. LTD.

GANG MOWERS FOR HIRE

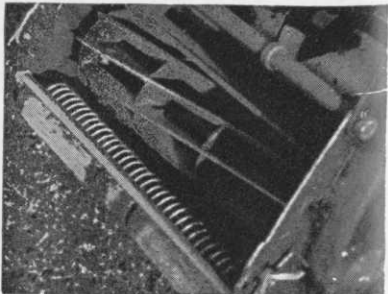
We will gladly call on you to advise on your grass cutting equipment or arrange demonstrations. Ring us now

*

153 Arch Stamford Brook Station, LONDON, W.6.
 01-748 5415

STEWARTS GRASS COMB

FOR THE MAN WHO TAKES PRIDE IN HIS TURF



From the People who care about Service

STEWARTS OF EDINBURGH

FINE TURF SPECIALISTS

EDINBURGH EH2 2AY 031-556 2102

A DAY ON THE RIVER WITH BIRMID

SIXTY MEMBERS of the literary world were entertained by the Directors of Birmid Qualcast to a day on the River Thames and an exhibition of their Home and Garden equipment, including their established, and new models.

In addressing the party, Mr. Prately, a director of Qualcast, mentioned that the 18th million lawn mower was expected to leave their production lines this year and that the company had already shown an increase in sales for 1973. He attributed this success to their provision of a powered mower that is simple, light and easy to handle, which attracted people away from the traditional hand mower.

The Atco division of the company are becoming heavily engaged in developing their professional mowing equipment and the exhibition introduced the latest mower from Atco in the form of a Ride-on Rotary Mower, suitable for semi-professional use, giving a 32 in. cutting width. Also from Atco will be coming a kick start version of the 28 in. Groundsman, along with a new trailer seat attachment.

The only other professional mowers on show were the 'Toughcut', capable of operating in arduous conditions such as verge cutting; and the 'mini-gang Triple mower', providing a cutting width of 56 in. for areas not suitable for larger conventional gang mowing equipment.

The rest of the exhibition was aimed at the housewife with the very light mowers. After experiencing the delights of all the exhibits, the party left Richmond Athletic ground, where the exhibition was held, both wiser as to the quality of the Qualcast mowers, and rugby pitches with a shorter covering of grass.

JOHN DAVIS

RELF & KENDALL

OF CROYDON AND BARNET

With pleasure announce that they hold the greatest concentration of lawn mower spares and lawn mower engine spares in the country

ENORMOUS STOCKS OF RANSOMES SPARE PARTS

RANSOMES

Also ASPERA, B.S.A.,
BRIGGS & STRATTON,
DENNIS, J.A.P., ROTAX,
VICTA, VILLIERS.

Service Exchange items such as CUTTING CYLINDERS—MAGNETOS
OUR FLEET OF VANS IS OCCUPIED DAILY IN MAINTAINING
OUR EXPRESS SPARES DELIVERY SERVICE

*Telephone your
immediate requirements to*



RELF & KENDALL

406 BRIGHTON ROAD, SOUTH CROYDON,
SURREY. CR2 6XX. Tel (01) 688 0578

11 STATION ROAD, NEW BARNET, HERTS.
Tel (01) 449 8228

We stock a comprehensive range of domestic and professional machinery. Ask for a demonstration on YOUR ground

BOMFORD BANDIT 2500 steals every economy on large open space mowing...



Europe's widest Flail Mower

Power, economy and quality: the three mainstays of Europe's widest flail mower, the Bandit 2500. With a cutting width of 8' 3", it really gets down to rough overgrowth—on wide verges, river banks, airfields, parks, recreational areas, etc.

Rear mounted on the hydraulic, 3-point linkage of an ordinary tractor, the cutting head is fully guarded and discharges cut material downwards for safety. Mulchings quickly disintegrate leaving no after

collection problems. High quality cutting, low maintenance costs and sheer work-hungry versatility, make the Bandit 2500 a real winner.

Get the Bomford Bandit too—well-established rear-mounted flail mower with the 5' 7" cutting width. Fits any make of standard tractor for safe, quick, high quality cutting.

Ride with the Bandit—to new economy!

BOMFORD & EVERSHERD LTD.

Evesham, Worcs., England WR11 5SW

Tel. Bidford-on-Avon (078-988) 3383 Telex 311081

News



from the Sections

Special occasions

- May 8 Midland Section Spring Tournament
8 North West Section Spring Tournament
9 East Midland Section Spring Tournament
9 Southern Section Spring Tournament
24/25 Parks and Sportsground Exhibition, Hackney, London
- June 6 Southern Section A.G.M., Hendon G.C.
12 Sheffield Section Outing to Cannock Fertiliser Ltd.
13 East Midland Section Presidents v. Captains Match
14 Midland Section Presidents Match
- July 2 Welsh Section Summer Tournament
18 Sheffield Section Annual Tournament
- Aug 13, 14, 15 B.G.G.A. Annual Tournament
- Sept 5 Southern Section Autumn Tournament
12 Welsh Section Autumn Tournament
18 North East Section Autumn Tournament
30 Southern Section Trip to Bingley
- Oct 10 Southern Section Secretary's Match

June 1973

EAST MIDLAND

Chairman:
G. DARBY

By S. Fretter
Hon. Secretary:
4 Queens Drive,
Leicester Forest East,
Leicester

Lecture

A lecture by Mr. Rossiter of J. Bentleys was held at the Three Nuns Hotel, Loughborough, on Monday 26th March 1973, which was very interesting, and attended by a good number of greenkeepers, visitors and Vice President.

Autumn Golf Tournament

The Annual Autumn Golf Tournament will be held at Kirby Muxloe Golf Club on Wednesday 3rd October 1973. Details will follow later in the Journal.

Congratulations

I would like to wish Mr. P. McCarron all the very best in his new post as Head Greenkeeper of Leicestershire Golf Club, and I hope he will have many happy years there.

Details of lectures, film shows and dinner/dance for the Autumn will be given later in the Journal.

SOUTHERN

Chairman:
C. A. MOORE
(Stanmore)

By F. W. Ford
Hon. Secretary:
68 Salcombe Gardens,
Mill Hill, N.W.7.
Tel: 01-959 2847

Annual Dinner

Over Sixty Members and guests played the Walton Heath New Course in the 18 hole Stableford before the dinner. We all enjoy playing in this 'first of this year game' (for most of us anyway), specially when it's a warm spring day and at Walton Heath.

The course was playing well thanks to Fred, Harry and staff and it's not surprising that there were several cards in with over 40 points. The winners of the prizes, which were presented after the dinner were as follows:

1. R. Tempest and H. Tempest 45 pts.
2. J. Kirkpatrick and W. Lofberg 44 pts
3. W. Machin and R. Morris 44 pts

Following an enjoyable dinner at which 110 sat down, your President, Mr. Jack Wallis-Arther, introduced the Captain of Walton-Heath Golf Club, Mr. A. C. Bryant.

Mr. Bryant welcomed the Southern Section and in proposing the B.G.G.A., said how much he had enjoyed the day and gave the invitation to return on some future occasion to Walton-Heath.

Mr. C. A. Moore replied for the Association

SITUATIONS VACANT

Head Greenkeeper *required*

for 18 hole course, Pop-up sprinkler system, modern machinery, three bedroomed house, salary by arrangement. Apply in writing, giving details of previous experience and current salary to

The Secretary
WHEATLEY GOLF CLUB
Amthorpe Road, Doncaster
Yorkshire

HEAD GREENKEEPER

required for 18 Hole Course

Automatic Pop-Up Sprinkler System,
Modern Machinery and Workshop.

Salary £2000 per annum

Accommodation to be discussed at interview. Apply in writing giving details of previous experience to:—

Secretary,
SWINDON GOLF CLUB
Ogbourne St. George
Marlborough, Wiltshire

GOLF CLUB DU BERCUIT
5980 Grez-Doiceau

Applications are invited for the post of

Secretary/ Greenkeeper

The successful applicant will supervise GREENS STAFF and should have full knowledge of modern equipment and watered greens, of normal routine golf club activities and of competitions.

A salary commensurate with these responsibilities can be offered to a first class man.

Details stating age, salary expected and previous employment and experience will be treated in confidence.

The Administrative Secretary
Mrs. J. JANSSENS
GOLF CLUB DU BERCUIT
5980 Grez-Doiceau
BELGIUM

ASHFORD (KENT) GOLF CLUB

Head Greenkeeper

Required to assume full responsibility for the course and staff.

No Club accommodation.

Applications with details of experience and salary expected to

The Secretary at Sandhurst Lane,
Ashford, Kent

Head Greenkeeper

for

COURSE UNDER
CONSTRUCTION

High Salary and a Bonus on completion.
Easy maintenance. Golfer preferred.

Apply in writing:

BUCHAN HOUSE
BUCHAN HILL FARM
CRAWLEY, SUSSEX

on behalf of the Chairman of the B.G.G.A., Mr. H. Walsh, who had been unavoidably prevented from attending. Thank you Charles for rising to the occasion at such short notice.

F. W. Ford, Hon. Sec., proposed the Guests and for the Guests Mr. Toope replied.

The Raffle brought the evening to a conclusion, the proceeds of which went to the Benevolent Fund. I would like to record our grateful thanks to everyone who contributed towards making the Annual Dinner such a successful and enjoyable day.

New Members

A warm welcome to the following New Members whose names are listed below:

I. Huggett (Tyrells Wood), F. C. Duhig (Gillingham) W. R. Mitchell (Perranporth), R. K. Chudusch (Hampstead) and R. D. Grand of the Rye Golf Club.

NORTH EAST

Chairman:
MR. J. SIMPSON

By G. Jeffries
Hon. Secretary:
55 Brackenfield Road,
Framwell Gate Moor
Durham

Autumn Tournament

Our Autumn Golf Tournament will be held on Tuesday, 18th September 1973, on the Gosforth Bridle Path Golf Course by kind permission of their Captain and Committee. This will be the usual 27-hole event, teeing off around 9.00 am. Lunch and high tea will be available.

New Members

We welcome to the section the following new members and hope their association will be a happy one.

G. Brown Wishart, Garesfield Golf Club, High Spen.

B. Skipper, of Eaglescliffe Golf Club, Teesside.

SHEFFIELD SECTION

Chairman:
G. HERRINGTON
(Lindrick)

By H. Gillespie
Hon. Secretary/Treasurer:
63 Langsett Avenue,
Sheffield S6 4AA

Lecture

The final lecture of the season at Abbeydale Golf Club on 5th April was given by Mr. G. Vaughan, of Ransomes Ltd., and covered the

latest range of Ransomes Hahn Turf Management Equipment.

We thank Mr. Vaughan for a very interesting afternoon and also for the refreshments afterwards.

The attendance at the lectures, held in the afternoon, has been very encouraging, indeed, with an average of 45 members present each month.

Outing

The outing to Cannock Fertiliser Ltd., is on Tuesday, 12th June; coach departs from Harmer Lane (Pond Street Bus Station) at 9.30 am. There are still a few seats left if you have found that at the last minute you would like to go.

New Member

We welcome to the section K. Beck, Head Greenkeeper at Tankersley Park Golf Club, who has joined us from the North West section.

WELSH

By J. Rees
Hon. Secretary:
Neath Golf Club,
Cadoxten, Neath, Glamorgan

Chairman:
H. FRY

Qualifying for the Ransomes Tournament, to be held in October, will be decided on the best aggregate scores for the Spring, Summer and Autumn Tournaments.

Our President, Mr. R. N. Bird, has very kindly supplied transport to and from Ipswich, the tournament venue. The three team members will have their expenses for the week paid by Ransomes Sims and Jefferies Ltd.

Summer Tournament

Our Summer Tournament will be held at the Royal Porthcawl Golf Club, on 2nd July 1973, by kind permission of the Captain and Committee. The format comprises 18 holes in the morning, with the Annual General Meeting taking place in the afternoon.

Autumn Tournament

Ashburnham Golf Club will be the venue of our Autumn Tournament on 12th September, 1973. We thank the Captain and Committee for their kind permission.

SPECIALLY BRED GRASSES FOR THE ENVIRONMENT.



Environmental grass. Grass to bring out the best of modern planning on motorways, golf courses, sports grounds. Or a fresh, new look to reclaimed waste ground, open-cast sites, and spoil heaps.

Environmental grass. Grown from Twyford's seed mixtures. Purpose bred for minimum maintenance, dense ground cover, greater persistence, yet with rapid establishment.



Twyford Seeds

TWYFORD SEEDS LIMITED
Wholesale Division
Adderbury Banbury Oxon Tel: Adderbury 281 (8 lines)

Please send me further details of specially bred grasses for the environment

Name _____

Company _____

Address _____

BGG/6/73

THE BEST IN GOLF COURSE EQUIPMENT

'SUPERCUT' HOLE CUTTER
'FAIRWAY' ROTARY BALL CLEANER
CUPS - FLAGS - STAFFS - NOTICE PLATES
TEE MARKERS AND BINS
GREENKEEPERS'
SPECIALITY TOOLS AND MACHINES

Pattisson

THE LARGEST MAKERS OF GOLF COURSE EQUIPMENT IN EUROPE

H. PATTISSON & CO. LTD.,

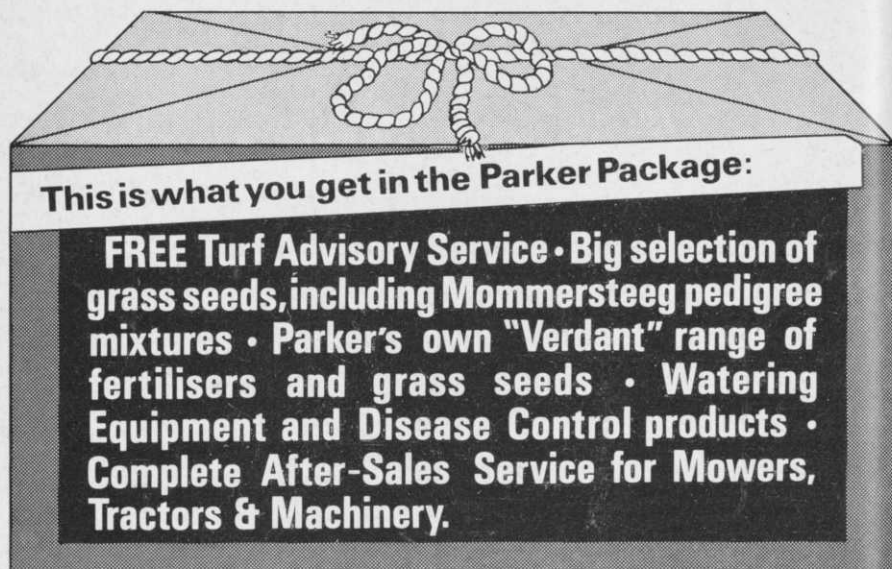
STANMORE HILL WORKS, STANMORE, MIDDX. 01-954 4171



THE PARKER PACKAGE



Everything you need in turf maintenance & equipment



And there's more for you in the Parker Package!

Parker are main distributors for Leyland Tractors
Sisis • Lodge • Ransomes • Dennis • Hayter • Allen
Flymo • May & Baker • Synchemicals • Proctor Nets
Perfecto Golf Accessories.

PARKER

Find out more about the Parker Package.
Write for our complete catalogue.

T. PARKER & SONS (Turf Management) LTD.
Worcester Park, SURREY.
Tel: 01-337 7791 (10 lines) 01-337 0861.