

The British Golf

Greenkeeper



Ransomes 24" Ride-On

The sure-footed 24" Ride-on makes light work of mowing golf tees and approaches as well as providing that "go-anywhere" manoeuvrability for cutting the awkward areas around the clubhouse.

Write or ring your Ransomes Sales & Service Distributor or RANSOMES SIMS & JEFFERIES LTD., IPSWICH. Tel. 0473 7222.

Dual clutches (land-roll and cutting cylinder).

2,560 sq. yds. per hour (as a ride-on mower).

Two part full-differential landroll.

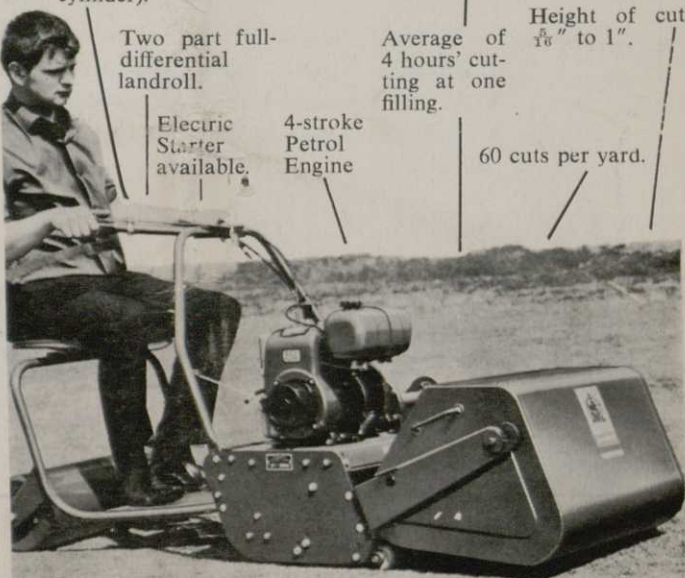
Average of 4 hours' cutting at one filling.

Height of cut $\frac{1}{8}$ " to 1".

Electric Starter available.

4-stroke Petrol Engine

60 cuts per yard.



RANSOMES



For the operator who likes to walk behind a thoroughbred, the 24" can be converted for pedestrian control in seconds.

THE JOINT COUNCIL

FOR

GOLF GREENKEEPER APPRENTICESHIP

Tomorrow's Greenkeepers are needed today.

Training Apprentices on your golf course will ensure that the Greenkeeping skills of the past can help with the upkeep problems of the future.

*Hon. Secretary: W. Machin, Addington Court Golf Club, Featherbed Lane,
Addington, Croydon, Surrey.*

GREENKEEPER

HON. EDITOR: F. W. HAWTREE



FOUNDED 1912

PUBLISHED MONTHLY FOR THE BENEFIT OF GREENKEEPERS, GREENKEEPING AND THE GAME OF GOLF BY THE BRITISH GOLF GREENKEEPERS' ASSOCIATION

No. 313 New Series

JUNE 1971

JUNE

CONTENTS

| | | |
|------|-------|------------------------------|
| PAGE | 3 | TEE SHOTS |
| | 4 | FREEDOM FROM FIBRE |
| | 6 | HOW'S YOUR PR IQ? |
| | 9 | STRI COURSE |
| | 10 | SPECIAL OCCASIONS |
| | 12 | ANNUAL TOURNAMENT PROGRAMME |
| | 13 | ANNUAL TOURNAMENT ENTRY FORM |
| | 15 | CORRESPONDENCE |
| | 16-17 | SITUATIONS VACANT |
| | 18 | HON. SECRETARY'S NOTES |
| | 19 | TRADE NEWS |
| | 20 | STRI ANNUAL REPORT |
| | 22 | NEWS FROM THE SECTIONS |

President:

CARL BREThERTON

Vice-Presidents:

SIR WILLIAM CARR
GORDON WRIGHT
F. W. HAWTREE
S. NORGATE
I. G. NICHOLLS
F. V. SOUTHGATE
P. HAZELL
W. KINSEY
P. MARSHALL
W. PAYNE

Chairman:

A. ROBERTSHAW
2 West View Avenue
Burley-in-Wharfedale
Yorks.

Vice-Chairman:

J. CARRICK

Hon. Secretary & Treasurer:

C. H. DIX
Addington Court G.C.
Featherbed Lane
Addington, Croydon, Surrey
CRO 9AA

Executive Committee:

Carl Bretherton (President)
G. Herrington E. W. Folkes
R. Goodwin S. Fretter
J. Parker J. Simpson
A. A. Cockfield H. M. Walsh
H. Fry (Jun.) P. Malia

Hon. Auditors:

Messrs SMALLFIELD RAWLINS AND
Co., Candlewick House, 116/126
Cannon Street, London, E.C.4

Hon. Solicitors:

HENRY DOWDING, LL.B.
203-205 High Street
Orpington

The Association is affiliated to the English and Welsh Golf Unions.

EDITORIAL AND ADVERTISEMENT OFFICES: Addington Court Golf Club, Featherbed Lane, Addington, Croydon, Surrey. Telephone: 01-657 0281. SUBSCRIPTION RATE: £1.25 for 12 issues post paid. Published during the first week of each month. LATEST COPY DATE: 8th of month prior to insertion. All rights reserved. Reproduction of original articles and photographs in whole or in part is prohibited. This Magazine shall not, without the written consent of the publishers first given, be re-sold, lent, hired out, or otherwise disposed of. Contributions and photographs of interest are invited.

TO INSERT A CLASSIFIED ADVERTISEMENT, write to the Advertisement Manager at the above address. The rate is 2½p per word (minimum 15 words). Remittance must be sent with order. Please state number of insertions required and write advertisement in block letters. Advertisements will be inserted in the first available issue.

The new Vari-Gang.

A major advance in big-area mower design.

Anything from the roughest of the rough to the smoothest of fairways, with the same basic gang unit.

With its easily interchangeable cutters of 5 or 8 blades, the new Atco Vari-Gang offers a choice of twenty-five or forty cuts per yard.

It converts just as easily from three units to five...to seven...to nine...all in a matter of minutes. And converting the triple to hydraulic lifting by means of a

simple optional kit is almost as quick.

The Vari-Gang's compact unit construction and flexibility of lay-out provide a contour-hugging cut over the most hummocky ground, with the minimum risk of scalping.

Full details of the Vari-Gang and demonstration facilities can be obtained from Atco at the address below, or from your local Atco stockist. Why not find out more about the Vari-Gang *now*?

ATCO

As famous as the lawns we cut.

CHARLES H. PUGH LTD., P.O. BOX 256, ATCO WORKS, BIRMINGHAM, B9 4PR. Tel: 021-772 2524



TEE SHOTS



by the Editor

Tonbridge Urban Council is inviting tenders for tree felling as the first stage in preparing for the town's new £166,000 municipal golf course.

★ ★ ★ ★

In spite of an overdraft of £10,000, a special meeting of the Market Rasen Golf Club decided last month to spend another £6,250 on buying 16½ acres of pine forest from the Forestry Commission.

★ ★ ★ ★

Leicestershire County Council has refused a second application from Coalville Urban Council for permission to develop an 18-hole golf course. Serious loss of farmland is the reason given.

★ ★ ★ ★

A new £13,000 golf range approved by the Amenities Department of the St Helens Council has been held up as the Engineers' Department has plans to build a dual carriageway across the site. Both the driving range plans and those for the road were sketched out two years ago but neither department knew what the other was up to.

* * * *

Plans for a new golf course on agricultural land outside Ipswich have been submitted to Suffolk County Council by Mrs Nancy Hughes-Reckitt. The Planning Committee seem favourably disposed towards the golf course but are not so happy about the residential development going with it.

* * * *

The New Delaval Pit Heap at Blythe is being flattened and Blythe Council expect it to produce a five star course attracting big prize competitions.

CANNOCK Granular Fertilisers
IDEAL FOR FAIRWAYS AND APPROACHES
THE CANNOCK AGRICULTURAL CO. LTD., CANNOCK, STAFFS

SEND NOW FOR OUR FREE 'GREENKEEPING' CATALOGUE

FREEDOM FROM FIBRE ?

By J. Perris, B.Sc., Advisory Officer, Sports Turf Research Institute, Bingley

ACCUMULATION of dead and decaying material at the base of the sward, i.e. fibre or "thatch" as the Americans call it, is one of the most common problems, directly or indirectly, on turf in Britain today, particularly on fine turf such as golf greens.

Formation

There is not yet a complete understanding of how fibre develops. We know, however, that fibre formation is encouraged by extreme acidic conditions and lack of regular mechanical operations such as spiking and scarifying also appear to have an important influence. There is speculation in many quarters as to other possible factors critical for fibre formation such as a possible relationship with soil flora and/or fauna, and if so the effects that modern artificial turf aids may have on such a relationship. During the next few years there may be some answers to these questions.

Resulting problems

In wet weather, fibrous turf tends to hold water rather like a sponge thus resulting in wetter conditions underfoot which in turn encourages disease outbreaks as well as causing damage to the playing surface (pitch marks etc.). The wetter surface conditions caused by fibre create more critical anaerobic conditions in the turf and thus even more fibre may develop — it really is a vicious circle.

Conversely in the drier summer weather the fibre layer dries out very quickly and then if watered prevents moisture from reaching the grass roots where it is really needed. A shallow rooting turf can result where the roots grow upwards into the fibre for moisture. When these shallow roots die they can contribute to further fibre formation — again the vicious circle situation. A fibre layer can also restrict materials such as fertilisers and wormkillers etc. from getting into the lower regions of the turf profile and thus the full benefits of such materials are often not obtained.

Elimination

Assuming that an area of turf has an appreciable fibrous layer (instances of perhaps 2in.-3in. of fibre can often be seen) elimination of this undesirable material is often achieved by either:

(a) *Correction of excessive soil acidity.*—Fibrous turf where the soil is excessively acid should normally receive an application of lime. This causes some breakdown of the fibrous material, but here a word of warning: for some time after treatment there may exist on the surface of the turf a fibrous condition which may be moisture retentive and possibly of an alkaline nature. Such conditions often result in troublesome outbreaks of *Ophiobolus* patch disease.

(b) *Scarification and aeration.*—Breakdown and elimination of a fibrous layer can often be achieved by mechanical means. Scarifying will physically remove dead material from the base of the turf, particularly mechanical scarification on fine turf. Here again another word of caution: the severity of scarification work must be related to the state of growth, weather conditions and, of course, playing commitments. Light scarifying is recommended for spring and summer but *early* in the autumn period on fine turf, deeper and more thorough scarification is desirable.

In addition to scarifying, regular spiking is essential using the appropriate tines for the time of year. Continual spiking through the fibre layer helps improve the drainage qualities and combats the anaerobic conditions associated with fibre formation.

(c) *Cutting away fibre.*—Where a very thick fibre layer occurs (say 2 in. or more) the practice of lifting turf, cutting it very thinly (say 1 in.), and cultivating the remaining fibre into the top soil before relaying the turf is often quite successful. Such methods have become more common in the last few years due to the more widespread use of

(contd. on p. 17)

Sports turf takes a lot of looking after. Up until now you could have chosen a wide range of different weedkillers to keep your turf clean.

Fisons, Britain's leading producers of weedkillers, offer you the easy way of winning the weed game. With just two products. Mecodex and Cambadex.

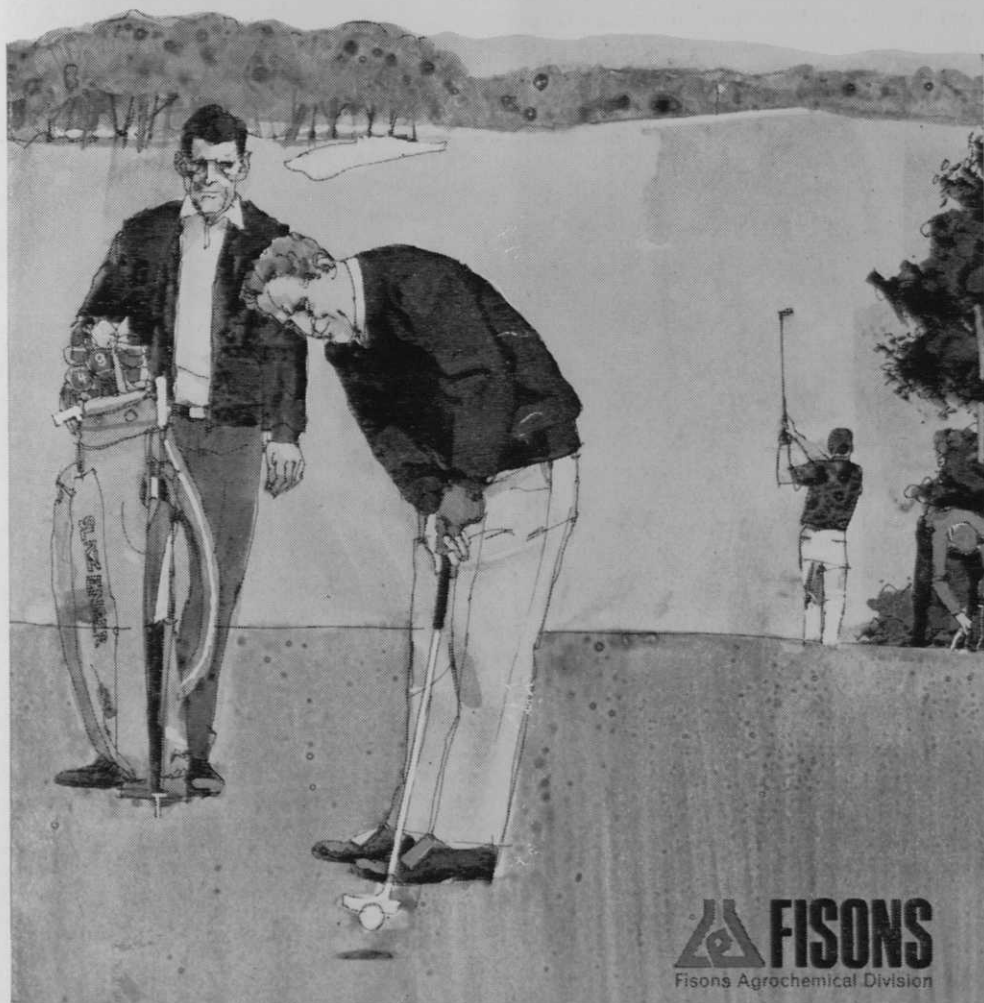
Highly-active, broad-spectrum weedkillers. Together they can solve all your major weed problems, at just one simple dose rate.

For free advice and information ring the Fisons' Sales Office at Claydon (near Ipswich) 492.

You've got nothing to lose.

Mecodex and Cambadex.

With these two on your side you always win.



Fisons Ltd., Recreational and Industrial Dept., Papermill Lane, Bramford, Nr. Ipswich.

Mr Superintendent :

HOW'S YOUR PR IQ?

By **NICK GEANNOPOULOS**, Managing Editor

The meaning and workings of "public relations" is often misunderstood. How can this intangible subject be better clarified? More to the point, how can public relations be applied to the benefit of the golf course superintendent?

Even though public relations is a standard topic on conference programmes and an important factor in contemporary decision-making, the term is frequently misunderstood.

Part of the confusion is the result of combining two common words. When used together, the term states an idea that is not conveyed by the individual definition of either "public" or "relations".

Definition

Public relations activities are more than relations with the public. Another common misconception is that public relations is publicity, which is but *one* of many methods used by the profession. Nor should this work be confused with that of the press agent, who often uses questionable methods to gain public notice.

Webster's Dictionary provides a long and involved definition of public relations. Stated simply, public relations is defined as the art of winning public favour by doing the right thing and receiving credit for it.

For our purposes, the golf professional has attained his present distinction in golfing circles largely through the efforts of public relations. In addition to the routine publicity he receives through his own golfing skill, the pro uses his business and marketing skill through a friendly, personable attitude, expert teaching ability and the countless extra services that he provides for members while dispensing good public relations at the club.

The club manager also is well-known for his congenial attitude, his unique flair for arranging parties, his ability to communicate with the members, and the overall superb quality, preparation and manner of serving meals at the club.

How then can the golf course superintendent improve his relations with the golfing public?

What you can do

The golf course superintendent, as an individual, must make it his own responsibility to "interpret himself to society". He must be constantly alert to opportunities to appear in the golfing public's eye and mind.

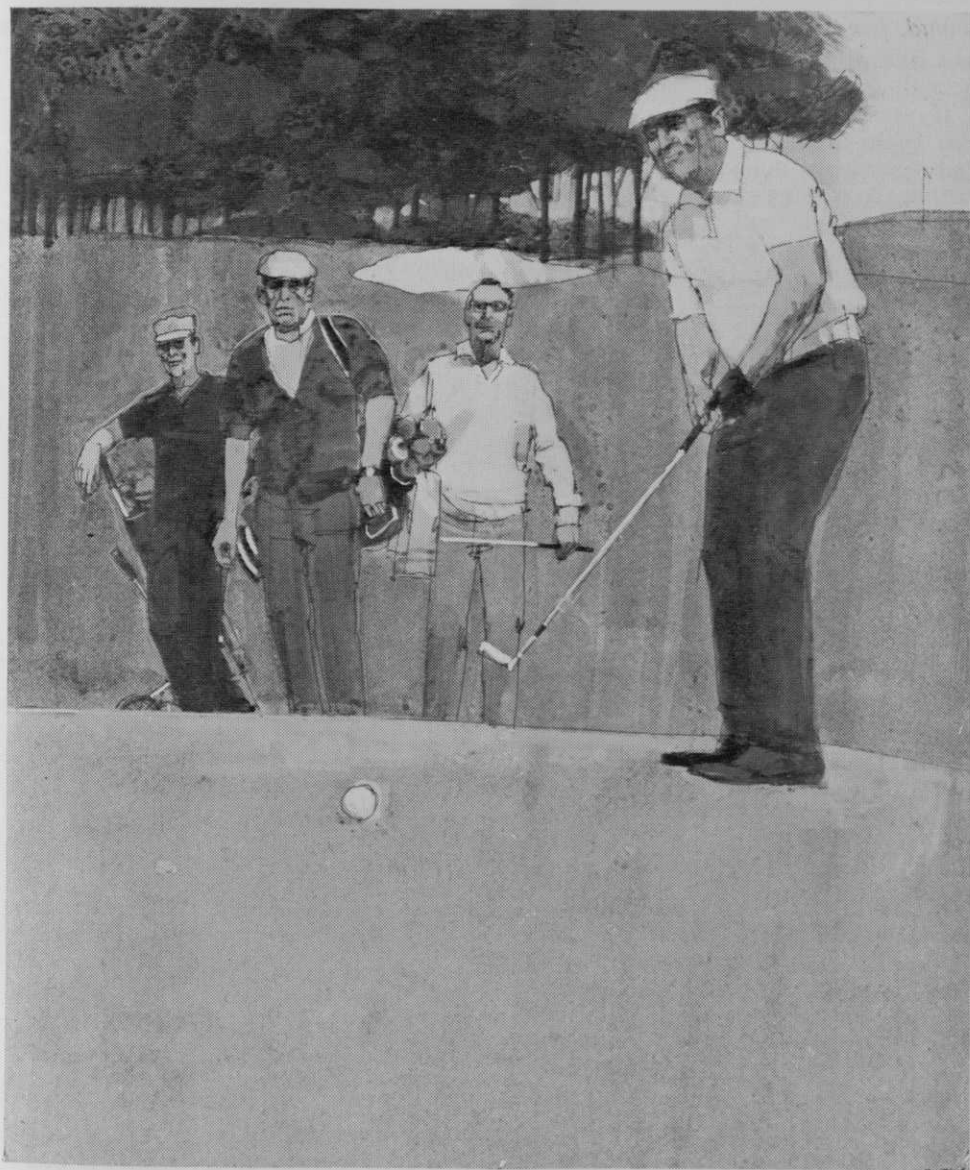
It is the purpose of public relations to expand every avenue of communications with the people he contacts. As his capacity for contact with his various daily public increases, so does his capacity to do a better job.

Such a professional attitude reaps very specific rewards in terms of salaries and related benefits. As a superintendent, you make it a point to know the people with whom you work. Build a reputation for being co-operative and congenial with your club manager, pro and controller. Seek them out for an occasional lunch and an opportunity to discuss club matters, just golf in general or even current events.

Take a leadership stand by suggesting that they refer all golf course maintenance inquiries to you, the expert, rather than to try to answer questions themselves. Arrange for constructive round-table discussions with your crew and schedule a daily critique with your assistant to discuss the calendar for the coming weeks. Cover any changes or additions to the long-range plans assigned to your department, so that in the event of your absence, the maintenance programme need not be disrupted.

You will find unlimited opportunity in visits at the Pro Shop and Starter Area after lunch to meet and chat with members about golf and turf-grass management, and even home lawn care. Most members are, either directly or indirectly, involved in the proper care and maintenance of their own lawns, and they greatly appreciate professional

(contd. on p. 8)



Their game could depend on yours.

Your game is choosing the right fertilizer.

We'd like to think Greenkeeper 2 is the right fertilizer, no matter what type of green you keep.

It's made up of peat-impregnated granules and is a fast-acting fertilizer for fine turf.

It's made by the unique Hi-Lite process and is easy to handle, with

no dust problem.

Greenkeeper 2 acts faster and lasts longer than any ordinary fertilizer giving consistently good results, with no scorching.

That's the benefit.

Greenkeeper 2, the reliable one. You can depend on it.



Greenkeeper 2

FISONS
Fisons Agricultural Division

Recreational and Industrial Dept. Papermill Lane, Bramford, Nr. Ipswich.
Tel: Claydon 492.

(contd. from p. 6)

and authoritative information that will help them grow a better one.

If your club publishes a newsletter, you might take advantage of this media to further your public relations by submitting something newsy, like "what's doing on the golf course" or an informative column on "home lawn care".

Be available

Your members should also be advised that you are available as a consultant. First and foremost, though, you must realise that both your personal appearance and the condition of your golf course will dictate your "know-how" in a louder voice than any amount of authoritative information you may impart to your readers. In other words, your own neat appearance and well-manicured course will give your advice all the authority it needs.

An excellent opportunity for showing pride in your professional organisation is to invite your green chairman to the chapter meetings, and include lunch and a game of golf. You might also arrange with a neighbouring superintendent for a golf game with each other's green chairman.

Another good public relations move that will keep you one jump ahead of others is to study and learn the "Rules of Golf". This effort can open many doors for you because anyone who plays golf will agree that to know all the rules of the game is quite a feat. Once word got around, you would be sought out to render golf decisions as the club's knowledgeable golf superintendent.

Learn the game

Of course, every golf superintendent should be a golfer. Is there a better way to look over the course? To establish a common bond with the members? To appear before all as the authority you propose to be? Your club's pro will gladly teach you the game if you do not now play or help you to improve your game if you do.

Using technical terminology and phrases during your discussion meetings on course maintenance will also improve your professional image. Use of such terms as: soil porosity, transpiration,

microclimate, soil profile, resiliency, and the use of acre and 1,000 square feet as the units of measure in your work, will label you as the "man in the know".

The professional golf course superintendent refers to "soil" instead of "dirt", the "maintenance building" instead of "barn", and presents himself as "golf course superintendent" rather than "greenkeeper" or "green superintendent".

Locally, get acquainted with the nearby university's extension programme on their latest research concerning fertilisers, chemicals, grasses or soil mixes. Get acquainted with your community newspaper's sports writer and feed him information about all activities at the club.

Your green chairman can help you develop good public relations with the members by inviting you to the festivities that follow big tournaments.

If wall space permits, you might install a "Public Relations Centre" consisting simply of a bulletin board located at either the Pro Shop or Starter Area. Here you can display any awards, diplomas or certificates you have received. You may also want to include notices about work that is going on or being planned for the golf course.

Have a camera on hand, too, to take your own pictures of members and their guests during the club's biggest tournament to put on your bulletin board. You might even take slides to be shown at the next green committee or board meeting.

Your bulletin board might also be used to display the views of "experts" on controversial subjects. The opinion of a well-known outside agent is often the clincher in selling a club plan to members.

Use displays

Anticipate questions from the members by providing information for them as to why you renovate the greens. Be prepared to answer why it was extra wet at certain locations on the course on any given day. Be able to explain why and what you are building. Also, if space is available, display a scale model of the golf course that not only has eye

(contd. on p. 9)

THE SPORTS TURF RESEARCH INSTITUTE

The Institute has recently held two Spring courses of instruction, each of five days' duration and attended by 26 and 25 people respectively. Those attending the second of these courses appear in the picture.

There will be further courses in the Autumn, commencing on 11th, 18th and 25th October; these again will be of five days' duration and will be attended by greenkeepers and groundsmen employed by the Institute's subscribing clubs and organisations.



Course of Instruction — 19th-23rd April 1971

From left to right, Back Row:—S. J. Green, Littlestone Golf Club; G. F. Clarke, Department of the Environment; J. M. Cowen, Denham G.C.; R. Ives, Northwood G.C.; F. K. Birks, Dept. of the Environment; D. Barber, Northenden G.C.; R. Fitzpatrick, Dept. of the Environment; M. G. McCance, Dept. of the Environment; N. Carter, Dept. of the Environment; C. Wright, Leatherhead G.C. Middle Row:—W. T. Taylor, Dept. of the Environment; F. Mickleburgh, Dept. of the Environment; T. Maidment, Royal Belfast G.C.; A. Cunningham, Manchester Parks Dept.; R. Glazier, Ifield Golf & Country Club; L. Gwilliam, Moor Park G.C.; J. J. Smith, Morpeth G.C.; D. Heath, Gatton Manor G.C. Front Row:—K. Sleet, Hitchin Urban District Council; D. Weatherington, Dept. of the Environment; S. Williams, Dept. of the Environment; W. Hebdige, Dept. of the Environment; F. G. de Aguilar, Son Vida Club de Golf; E. G. Yeates, Dept. of the Environment; A. Anslow, Skipton G.C.

(contd. from p. 8)

appeal but shows pertinent information such as length of holes, pars and handicaps.

The methods of promoting good public relations are limitless. They can make up a complex network of ingenious promotional endeavours or they can be found simply in the personable, attractive appearance of a conscientious

worker who radiates an honest love for the work he does.

Let the superintendent strive for professionalism. Let him step up among the distinguished leaders in the golfing industry. Let him be recognised as a man who is every bit as important as the job that he does.

With acknowledgements to the "Golf Superintendent."



A group of North-West Section members on a visit to the Birmingham works of Charles H. Pugh (Atco) Limited.



| | | |
|--------|------|--|
| MAY | 11th | North-West Section Spring Tournament. |
| | 26th | Southern Section A.G.M. |
| JUNE | 2nd | East Midland Section Spring Tournament. |
| | 24th | President's Team v. Midland Section Match. |
| AUGUST | 23rd | Annual Tournament Hollinwell Golf Club. |
| | 24th | |
| | 25th | |
| SEPT. | 8th | Southern Section Autumn Tournament. |
| | 23rd | Northern Section Autumn Tournament. |

1971
ANNUAL
TOURNAMENT

HOLLINWELL GOLF CLUB
NOTTS.

23rd, 24th, 25th AUGUST

Programme

23rd am 18 Hole Stapleford Competition

pm Annual General Meeting

24th 36 Hole Scratch Cup & Prize

36 Hole Senior Division Handicap

36 Hole Junior Division Handicap

18 Hole Coming of Age Cup

25th am 18 Hole Medal Competition

pm Prize Presentation

ENTRY FORM

(Block letters Please)

Name

Address

.....

.....

.....

Club S.S.S.

Section

Handicap

Tick Box if eligible for **Coming of Age Cup**
(Age 60 and over)

Tick Box if an Artisan Member

Tick Box if requiring Caddy Car

Entries close 30th June 1971

Conditions & Draw Sheets will be sent to
all entrants

Send this entry form before 30th June to:

FOLD

FOLD

C. H. Dix, Esq.,
Hon. Secretary,
British Golf Greenkeepers' Association,
Addington Court Golf Club,
Featherbed Lane,
Addington,
Croydon CR0 9AA

CORRESPONDENCE

7 Houghton Road,
Shifnal,
Shropshire.
TF11 8DD.
24th April 1971

Dear Sir,

Once again our tees have come through the winter looking even more pathetic than they did last year when we had a comparatively harsher winter. I hate to think what they might be like after next winter.

For some time now I've campaigned for larger tees on our course which is built on very heavy clay soil with poor natural drainage. At the moment the gents' tees measure one hundred square yards for the actual playing area. I maintain that the tees should be very much larger on our type of course; a playing area of *not less than two hundred square yards* for the gents' tees.

I certainly think that if our tees are to come through the winter in a far healthier condition it is essential to enlarge them.

What do other members of the Greenkeepers' Association, especially those who work on courses like this, consider a reasonable size for tees?

Yours faithfully,

R. J. Lane.

Current specifications for new golf courses call for 350 sq.yards teeing area at par-4 and par-5 and 450 sq. yards at par-3 holes. Where contours are suitable, one single tee 35 or 45 yards by 10 yards provides maximum use and minimum upkeep but a formation of this type may not be suitable at a 525 yards par-5 hole, for example, where ladies would still be playing the hole at around 500 yards: nor where the tee is on a severe slope so that one single tee would involve massive earth works.

One difficulty is that tees cost about £1 per sq. yard to construct if the soil is properly ameliorated. Thus 18 holes at 100 sq. yards cost £1,800 for tees; 18 holes at 350 sq. yards to 450 sq. yards cost £6,700. There is naturally a tendency to postpone the additional teeing area if money is short; but this takes up valuable maintenance time and cannot be done quickly.

To show how small single tees waste useful space calculate the loss of 1 foot round the edges of a tee 10 yards by 10 yards. It amounts to 13 per cent. Lose 2 feet all round and it amounts to 25 per cent.

EDITOR.

SITUATIONS VACANT

ROTHLEY PARK GOLF CLUB

HEAD GREENKEEPER REQUIRED

Applicants must be fully experienced in all branches of Greenkeeping and able to control and organise staff.

Excellent salary for first-class man with rent-free modern house (three bedrooms) in residential area within easy reach of the course.

Full details as to age, experience, with two references, to the Secretary, Rothley Park Golf Club, Nr. Leicester,

SITUATIONS VACANT

POTTERS BAR GOLF CLUB

REQUIRE

HEAD GREENKEEPER

Salary not less than £1,300 per annum plus
three-bedroom bungalow
Heating, lighting and constant hot water free
Cameron's pop-up sprinkler system installed

Only experienced men should apply to:

The Secretary
Potters Bar Golf Club
Darkes Lane, Potters Bar
Hertfordshire
Tel. No. Potters Bar 52020

LEE VALLEY REGIONAL PARK AUTHORITY

**Picketts Lock Golf Course
Enfield, Middlesex**

Applications are invited for the undermentioned posts in connection with the maintenance of the new 18-hole, par three golf course:—

- (a) **HEAD GREENKEEPER** (£1,188 - £1,296 per annum).
Possibility of housing accommodation according to circumstances.
- (b) **TWO ASSISTANT GREENKEEPERS** (wage rate £20.50 per week inclusive of bonus for good work.
Possibility of some overtime.

Applicants for post (a) should have good practical knowledge of turf maintenance and green keeping.

Conditions of service similar to those of Local Government generally, including superannuation.

Applications giving details of age, experience, previous appointments and naming of referees should reach the undersigned not later than 20th May 1971.

Myddelton House,
Bulls Cross, Enfield,
Middlesex.

H. C. WILKINSON,
Solicitor and Secretary,

SITUATIONS VACANT

BOROUGH OF NEWCASTLE-UNDER-LYME

PARKS AND CEMETERIES DEPARTMENT

HEAD GREENKEEPER

Applications are invited from fully qualified and capable Greenkeepers for the above post. The successful applicant will be in charge of the direct labour forces engaged in the layout of a new 18 hole golf course.

This is a challenging new post and only applications from keen and interested persons are required.

The salary is in Miscellaneous Grade 6 (£1,188-£1,296). Housing accommodation available.

Applications by letter to the Director of Parks and Cemeteries, Civic Offices, Merrial Street, Newcastle, Staffs., (telephone Newcastle, Staffs. 60161, extension 280) stating age, details of previous experience, and the names and addresses of two referees, must be received not later than 31st May, 1971.

C. J. MORTON,
Town Clerk.

WESTPORT GOLF CLUB

Greenkeeper

A new championship golf course at Westport will be completed in June 1971. The climate is mild, the scenery spectacular. Greenkeepers with experience wishing to take full charge of maintenance are invited to write to the Hon. Secretary, Westport Golf Club, Westport, Co. Mayo. A greenkeeper's flat will be provided in the clubhouse. State salary required and brief personal history.

THREE RIVERS GOLF AND COUNTRY CLUB

now under construction in mid Essex (Cold Norton) require

- (a) ASSISTANT GREENKEEPER
- (b) GROUND STAFF

Accommodation available if required. Please apply, stating age, experience, salary required, to the Secretary, Three Rivers Golf and Country Club, c/o Heycroft Holdings Limited, 687/691 London Road, Westcliff, Essex.

(contd. from p. 4)

mechanical sod cutters, but on some courses the old practice of lifting, boxing and cutting the turf by hand is still employed.

Conclusion

An excess of fibre may take quite a long time to develop and unless lifting

the turf, cutting off the fibre and relaying is then undertaken, reduction of the fibre by scarifying and spiking may be a lengthy process.

The fibre problem must not be ignored but perhaps the best answer comes from the old saying "prevention is better than cure".



Hon. Secretary's Notes

SUBSCRIPTIONS

Will members please take note that the subscriptions for 1971/72 are increased to the following:—

| | | |
|---------|--------------------------|-------|
| Class A | Head Greenkeeper | £2.00 |
| Class B | First Assistant | 1.50 |
| Class C | Associates | 1.00 |
| Class D | Greenkeeper/Professional | 2.00 |
| Class E | Honorary Members | 2.50 |

These increases were proposed by the Executive Committee last March, and unanimously passed by the members at the Extraordinary General Meeting on May 8th, 1971.

The breakdown of the new subscription will be as follows:—

| | | |
|---------|--------------|-------|
| Class A | Sections | 50p |
| | Central Fund | 90p |
| | STRI | 25p |
| | Postage | 35p |
| Class B | Sections | 50p |
| | Central Fund | 40p |
| | STRI | 25p |
| | Postage | 35p |
| Class C | Sections | 40p |
| | STRI | 25p |
| | Postage | 35p |
| Class D | Sections | 50p |
| | Central Fund | 90p |
| | STRI | 25p |
| | Postage | 35p |
| Class E | Sections | 2.15p |
| | Postage | 35p |

It is regretted that these increases are absolutely essential to maintain the financial stability of the association due to the increasing costs, particularly of postage and printing.

Open Championship—Royal Birkdale

The Secretary of the Royal and Ancient Golf Club has again kindly forwarded 12 passes for the "Open" at Royal Birkdale Golf Club from 7th to 10th July. Any member who would like to make use of one should apply to me as soon as possible—first come, first served.

Annual Tournament — Hollinwell Golf Club

Herewith is a list of hotels and accommodation in Mansfield which may be useful to members who will be visiting the tournament.

These have kindly been furnished by Mr Fretter of the East Midland Section.
C. H. Dix.

Mr. L. Wilbrahams, Malt Shovel Hotel, Hucknall, Notts.

The Parkhurst Guest House, Woodhouse Road, Mansfield, Notts.

The Beech Dene Guest House, Woodhouse Road, Mansfield, Notts.

The Red Lion Hotel, Westgate, Mansfield, Notts.

The Denmans Head Hotel, Market Place, Sutton-in-Ashfield, Notts.

The Swan Hotel (licensed), Church Street, Mansfield. Tel. Mansfield 24131.

The Midland Hotel (licensed), (opposite Midland Station), Mansfield. Tel. Mansfield 23195.

The Pine Lodge Hotel, Nottingham Road, Mansfield. Tel. Mansfield 24639.

The Clifton Hotel, Terrace Road, Mansfield. Tel. Mansfield 23876.

Springfield Hotel, Layton Avenue, Mansfield. Tel. Mansfield 23991.

Fernleaf Hotel, 26 Chesterfield Road South, Mansfield. Tel. Mansfield 22079.

Mrs H. W. Willdig (Guest House), "Holmesdale", 106 Nottingham Road, Mansfield. Tel. Mansfield 24605.

Mrs Garner (Guest House), 98 Nottingham Road, Mansfield. Tel. Mansfield 23909.

H. M. O'Donnell, 99 Nottingham Road, Mansfield. Tel. Mansfield 27689.

E. Roberts, 24 Commercial Street, Mansfield. Tel. Mansfield 25984.

MISCELLANEOUS

PROFESSIONALS AND GREEN-KEEPERS having stocks of used golf balls contact Sparkbrook Golf Ball Co., 295 Highgate Road, Stoney Lane, Birmingham, with a view to filling export orders.

TRADE NEWS

The Easthampsted and Wokingham Joint Golf Course Committee have recently placed a contract with the Golf Course Construction Division of VEB Limited for the construction of an 18-hole golf course at a figure understood to be in the region of £75,000. Work is due to start immediately and this municipal course, which is designed by the well-known golf course architect, Mr W. Hawtree, will provide a much needed golfing facility for those who live in the area.

★ ★ ★

The directors of VEB Limited wish to announce that as from the 1st April 1971, Fraser Middleton, the manager of their Golf Course Construction Division, has been appointed to the board as an executive director, with special responsibility for golf course construction.

The company, at present, is active in this field and has internationally eight courses under construction. They fore-

see increasing growth in this field and have organised the company's administration accordingly.

★ ★ ★

Sisis Equipment (Macclesfield) Ltd., with co-operation from Messrs. G. D. Mountfield Ltd., have developed a special attachment bracket to enable Sisis Aeromain implements to be used with Wheel Horse Tractors. This special bracket will cost £7.00.

By this means the standard Sisis manual linkage can be mounted at the rear of the tractor and all the well proven Sisis implements thus used, for aerating, scarifying, tilthing, brushing, rolling, luting, spreading, etc., on both turf and hard porous pitches.

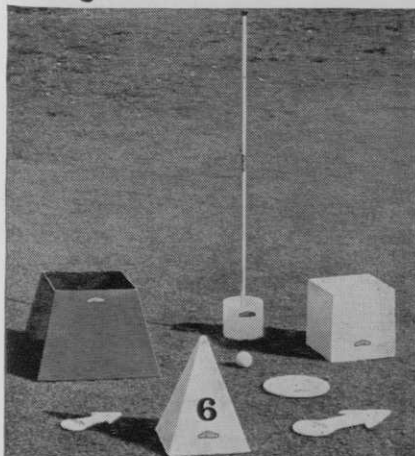
★ ★ ★

Contract Service Scheme Helps Cut Costs

An important part of Flymo Institutional Service to professional users in
(contd. on p. 21)

Pattisson

Golf Course Equipment in Fibreglass



FOR ALL GOLF COURSE EQUIPMENT

Suppliers to the world since 1896

The range comprises:—

TEE LITTER BINS

Colours: Red, White or Yellow.

TEE PYRAMID MARKERS

Colours: Red, White or Yellow.

TEE CUBES

Colours: Red, White or Yellow.

TEE ARROWS

Colour: White.

TEE DISCS

Colour: White.

Complementary to the above are the existing items, such as **Polythene Tee Balls** in red, white and yellow; **Bogey-type Hole Cup** in nylon (one-piece moulding); and the **Fibreglass Flagstuffs**, as listed in our current Golf Catalogue.

WRITE TO US FOR PRICE LIST AND LATEST CATALOGUE

H. PATTISSON & CO. LTD.
STANMORE, MIDDLESEX
01-954 4171

THE SPORTS TURF RESEARCH INSTITUTE

BINGLEY, YORKSHIRE

The Twentieth Annual General Meeting of the SPORTS TURF RESEARCH INSTITUTE was held at Bingley on Monday, 26th April, under the chairmanship of Mr Alan Sowden.

(1) In the annual report for 1970, which was adopted, reference was made to:—

(a) *Research.*—Emphasis in the main was on testing grass varieties and adding to information on the best use of grass species and varieties. Fifteen new trials were sown, the total area taken up by the project being brought to almost three acres. Wear treatment was carried out artificially with a modified turf aerator made to an Institute design.

Other work included fungicide trials with, in addition, some small tests on the treatment of *Ophiobolus* patch disease and an external trial on the treatment of fairy rings, also trials of mosskillers and herbicides. The soil amelioration experiments continued.

(b) *Advisory Service.*—There was a noteworthy increase in the demand made upon the advisory service by sports clubs, parks departments and education authorities, particularly in respect of sports ground construction. Much favourable television, radio and press publicity was obtained, particu-

larly in connection with the reconstruction of the Wembley Stadium pitch.

(c) *Education.*—Six instructional courses, each of five days' duration, were held in 1970, these being attended by a total of 145 greenkeepers, groundsmen and club officials, etc. Lectures were given at centres throughout the country and articles were contributed for publication in popular magazines. Members of staff continued to serve on national and local committees concerned with the training of greenkeepers and groundsmen.

(d) *Finance.*—Despite tremendous increases in overheads the financial result was a nominal surplus, this being due to the exceptional earnings of the advisory service. But future dependence upon the advisory service making no less a contribution to revenue will obviously continue, particularly as costs continue to rise, further to which it is now a matter of priority that more funds be obtained to expand the level of research.

(2) A message of loyal greetings was sent to H.R.H. The Duke of Edinburgh, patron of the Institute.

(3) Elections were: President, the Duke of Norfolk. Vice-Presidents, Carl Bretherton, Esq.; Sir William Worsley; R. G. J. Kirk, Esq. Chairman, Alan Sowden, Esq. Vice-Chairman, R. E. Cameron, Esq.

R. C. CRAIG

AND CO. LTD.

SPECIALISTS IN THE REPAIR AND
MAINTENANCE OF ALL TYPES OF MOWERS

★ Agents for: RANSOMES SIMS &
JEFFERIES Ltd.

★ LLOYDS & Co. Ltd.
WEBBS LAWN MOWERS

★ Distributors: DENNIS BROS Ltd.

GANG MOWERS FOR HIRE

We will gladly call on you to advise on your grass cutting equipment or arrange demonstrations. Ring us now.

★

153 Arch Stamford Brook
Station, LONDON, W.6.

RIVERSIDE 5415

(contd. from p. 19)

London and the Home Counties is a Contract Service Scheme, already successfully operated from Watford.

The scheme, announced by the Institutional Division of Flymo Limited of Watford, provides a servicing operation during the peak grass-cutting period from March to September with monthly visits.

The scheme enables Institutional users to get continuous performance with minimum maintenance costs from their Toro and other equipment available through Flymo Institutional Division.

It will also help prevent breakdowns and unnecessary expense of spares replacements by providing operators and maintenance staff with greater knowledge of their equipment and correct methods of operation.

The scheme is designed to include 1½ hours' work during each monthly visit. If a machine is properly operated, adjusted and maintained to make the

total work allocation unnecessary, allowance is made for time not taken up which can be credited towards renewal of the contract for the following season.

Full details of the scheme can be obtained from the Institutional Division at Watford.

★ ★ ★

U.S.A. v. The World Golf Series

Many of the world's leading golfers are currently taking part in the golf series U.S.A. v. The World, now being featured on B.B.C.-2.

Ransomes' attractive golf course accessories were selected to dress the famous courses on which this series is being played.

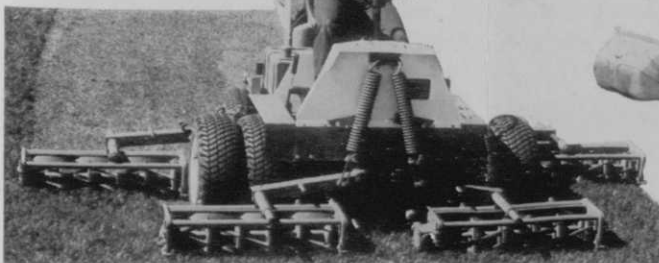
Ransomes' wide range of accessories are colourful, durable and can be personalised for your club's requirements. The prices are competitive and the accessories are manufactured by Ransomes in Scotland, the home of golf.

Full details and illustrated coloured catalogue are available on request to Ransomes.

ROLFE PROFESSIONAL MOWBILITY

The widest range of professional machines for local authorities, parks and sportsgrounds from Britain's most experienced distributors. Write or ring for the catalogue or a demonstration anytime anywhere to the country's best known turf machinery specialists.

JACOBSEN Commercial 60 60" Riding Mower Turf King 3 gang 76" or 84" AGRIA 4 wheeled diesel Tractor 18 h.p. GOLF Towed sweeper 36" BUNTON Rotaries 24" to 52" PARKER Parker Vac Commercial Vacuum Collector



JACOBSEN F133 5 gang 133" cut



JACOBSEN Sod cutter 12" to 17"



JACOBSEN Greens King 3 gang 70"

ROLFE'S MINI-TRACTORS LTD

WINCHESTER HILL, ROMSEY (76), HANTS.

TELEPHONE: ROMSEY 3185

News



from the Sections

NORTH-EAST

By G. Jeffries

Chairman:
J. SIMPSON

Hon. Secretary:
55 Brackenfield Road,
Framwell Gate Moor, Durham.

Lecture

On Monday, 15th February, we had a lecture by Flymo Limited. This was given by Mr J. Cogan from the Institutional Division. With Mr Cogan was Mr Ron Charlton of Flymo, Mr Mitchell of Farmway, Mr D. Wox and Mr Norman Steel also of Farmway. Owing to the postal strike, the attendance was poor. With the aid of slides, Mr Cogan gave a very good lecture on how Flymo Limited began in the lawnmower market. He talked of machines that were in use long before some of us were thought of, up to the present time.

Refreshments were served and the talks continued well into the evening. Everyone agreed this was a very interesting lecture, and our chairman, Mr Jack Simpson, thanked Mr Cogan for an excellent evening. This was followed with a good round of applause from everyone present.

New Appointments

C. Moseby, head greenkeeper of Blyth Golf Club, has moved to the Bedlington new course as first assistant, and J. Clark, also of Blyth, has moved to Bedlington as an assistant at the same course. We wish them well in their new club.

EAST MIDLAND

By S. Fretter

Hon. Secretary:

4 Queens Drive,
Leicester Forest East,
Leicester.

Chairman:
J. CARRICK

Spring Tournament

The Annual Spring Tournament will be held at Kibworth Golf Club on Wednesday, 2nd June 1971. The first tee 12.45 p.m. Kibworth is on the Leicester to Market Harborough road about six miles out of Leicester on the A.6. Would you please let me know by the 22nd May 1971 if you will be playing and also require a meal.

New Members

We welcome the following new members to this Section:—

C. A. Ravalde, Esq., 30 Belvoir Drive,
Syston, Leicester (Birstall Golf Club);

A. C. Pearson, Esq., 26 Willoughby Street,
Beeston, Notts. (Chilwell Manor Golf Club).

Subscriptions

Would members please note that subscriptions for the year beginning the 1st May 1971 have now become due.

SOUTHERN

By F. W. Ford

Hon. Secretary:

68 Salcombe Gardens
Mill Hill, N.W.7
Tel: 01-959 2847

Chairman:
C. A. MOORE
(Stanmore)

Annual Dinner

Despite the postal strike making contact with members very difficult, 70 members and guests sat down for the 1971 Annual Dinner at the Wanstead Golf Club on Friday, 19th March.

The weather was not too good for the afternoon's golf but 44 competitors took part and the winners of the sweepstakes were as follows: 1st, R. Rotsey and A. Robertshaw 40 points; 2nd, R. Lance and M. Thomson 37 points; 3rd, B. Richardson and M. Bufham 37 points. Third prize of one dozen golf balls was presented by Flymo Limited. The course was playing well, thanks to Jock Rennie and his merry men, and I personally had a very enjoyable game with him and Reg Knight, the professional. Thanks also to Reg for the free use of his trollies.

The meal itself was first class thanks to Mr and Mrs Whitfield and staff, and we all enjoyed listening to the captain of Wanstead proposing the Association and Adrian Robertshaw, chairman of the B.G.G.A., replying. The proposal and reply for the guests followed, ably performed by Jock Glass and J. M. Thomas, captain of South Herts.

A special thank you to the chairman for making the journey from Ilkley to be with us on this occasion; we all forgave you for winning, Adrian, when you stepped up to the bar. Thanks to Mr West, secretary of Wanstead, for his splendid co-operation throughout and to John Field for marking cards, etc.

New Members

A warm welcome is extended to our new members whose names are listed below:—

K. Thomas (Boyce Hill);

R. Hargreaves (Effingham).

Subscriptions

A reminder to all members that subscriptions for 1971/72 are due on the 1st May and, to assist me in my secretarial duties, prompt attention to this matter is essential.

Class A (head greenkeepers) £1.62½.

Class B (first assistants) £1.12½.

Class C (assistants and apprentices) 82½p.

Cheques and crossed postal orders only by post, please.

Bereavement

It is my sad duty to report the passing of Stan Dennis, well-known head greenkeeper to the Upminster Golf Club for many years. Stan will be remembered as hard working, knowledgeable and dedicated to his trade of turf upkeep. From all his many friends in the Southern Section I would like to extend our deepest sympathy to Mrs Dennis in her great loss. The section was represented by Peter Moore at the crematorium.

SHEFFIELD

By H. Gillespie

Chairman:
G. HERRINGTON
(Lindrick)

Hon. Secretary:
63 Langsett Avenue
Sheffield, S6 4AA

The winter lecture season just ended did not draw the attendances like we had the previous year; perhaps the change of rooms did a little to depress interest but arrangements are in hand for another venue next winter that will, I am sure, meet with everyone's approval. More details next month when details are finalised.

Retirement

Jack Baxby, head greenkeeper at Hallowes Golf Club for very many years, has retired from the course and moved indoors as assistant steward due to health reasons. Jack has been a long-serving, active member and has been vice-chairman since 1965.

Best wishes in the future, Jack.

Staff Changes

Tony Smith, who was first assistant at Hillsboro Golf Club, has moved to Hallowes Golf Club to succeed J. Baxby as head.

Ron Whitehead, head greenkeeper at Wheatly Golf Club, has moved to Dore and Totley Golf Club, and Tony Baxby has moved from Hallowes Golf Club to Dore and Totley Golf Club as Ron's first assistant.

litter & leaves cleared fast



WITH THE **sisis** LITAMISA

Let the Litamisa take care of the collection of your leaves, litter and grass cuttings from turf and hard surfaces.

Couple the 6ft. Litamisa to your tractor and leave it to one man to clear large areas rapidly, efficiently and economically, and deposit the collected material on your compost heap or rubbish dump—without leaving the tractor seat.

The cost of the machine can be covered by one season's use.

**SISIS EQUIPMENT (Macclesfield) LTD.,
MACCLESFIELD, CHESHIRE SK10 2LZ
Tel. Macclesfield 26363 (code 0625)**

Ask for a demonstration

Derek Neve, who was first assistant at Wheatley Golf Club, moves up to head greenkeeper.

The best of luck to you all in your new positions.

SOUTH-WEST

By A. Cockfield

Hon. Secretary:
10 Clarence Terrace,
Claverton Down, Bath.

Chairman:
L. MILLAR

A record number of 27 members attended the A.G.M. held at Saltford Golf Club on the 23rd March.

Last year's Minutes and Balance Sheet were read and approved. The committee appointed for the coming year was as follows: R. Gates, chairman; L. Millar, I. Scoones, W. Light, J. Torrance and S. Baber.

Our president, Mr J. Ireland, has very generously donated two silver tankards to be played for as a foursomes prize. A knock-out competition was first suggested but finally, on account of difficulty in travelling, it was agreed to make the competition an 18-hole greensome/foursome competition and the venue being Clevedon Golf Club on the 19th May.

The Annual Summer Tournament is being held at Worlebury Golf Club on the 8th July. Conditions for the tournament will be the same as those applied last year.

The meeting closed with a vote of thanks to our president and Saltford Golf Club.

Congratulations to R. Gates on becoming section chairman for the coming year.

It is good to see the new head greenkeepers from Warminster and Weston-Super-Mare golf clubs again members of the Section.

TRADE NEWS

Correction

Elvin Pennants have moved their premises to 34 D'Arcy Way, Tolleshunt D'Arcy, Essex. Tel. No. Tolleshunt D'Arcy 472. Application for their 1971 brochure should be made to this address and not the one published in the previous issue of the journal.

★ ★ ★

Cannock Agricultural Co., Ltd., have published a booklet describing the range of Cannock Grass seeds, compounds, etc., which is available to clubs and greenkeepers, free of charge, together with their brochure on Cannock Fusarium Specific.—Address Cannock, Staffs. WS11 3LW.

The reference to the Molspur Park Exhibition on the Relf & Kendall advertisement in last month's issue was printed in error.

FOR HIRE

SISIS AUTOTURFMAN AERATOR, £25 per week — do it yourself. For contract prices telephone Burnell, Eaglescliffe 3647.

HUXLEYS HIRE

FOR THE PROFESSIONAL USER

Sometimes the purchase of equipment is not economic. We offer for hire specialised machinery for that seasonal job. Send for brochure and price list.

Huxleys

GARDEN MACHINERY

22/26 Church Street, Staines, Middx.

Tel.: Staines 51123 (3 lines)

Also at The Dean, New Alresford, Hants.

Tel.: Alresford 3222

FOR FAST GREENS



FIT A GRASS COMB
TO YOUR MOWER

STEWART & CO.,

FINE TURF SPECIALISTS

EDINBURGH. EH2 2AY

BUYERS' GUIDE

CLINKER, ETC.

T. PARKER & SONS, Worcester Park, Surrey.

CONTRACTORS

GILLIAM & CO. Ltd., Purley, Surrey.
MAXWELL M. HART, Ltd., Winnersh, Wokingham, Berkshire.
JOHN R. STUTT, Ltd., Potterhill, Paisley, also at Poole, Dorset.

EQUIPMENT SERVICING

R. C. CRAIG, Ltd., 30 Aylmer Rd., London, W.12.
GROSVENOR ENGINEERING CO., Manningham, Bradford, Yorks.
RELF & KENDALL, 406 Brighton Rd., S. Croydon, Surrey.
T. PARKER & SONS, Worcester Park, Surrey.

FERTILISERS

CANNOCK AGRICULTURAL CO., Ltd., Cannock, Staffs.
CARTERS' TESTED SEEDS, Ltd., Raynes Park, London, S.W.20.
FISONS Ltd. AGROCHEMICAL DIV., Recreational and Industrial Dept., Chemical Works, Paper Mill Lane, Bramford.
MAXWELL M. HART, Ltd., Winnersh, Wokingham, Berkshire.
T. PARKER & SONS, Worcester Park, Surrey.
STEWART & CO., Seedsmen Ltd., Edinburgh, 2.
SUTTON & SONS, Ltd., Reading.

FUNGUS CONTROL

CANNOCK AGRICULTURAL CO., Ltd., Cannock, Staffs.
CARTERS' TESTED SEEDS, Ltd., Raynes Park, London, S.W.20.
MAY & BAKER, Ltd., Dagenham, Essex.
T. PARKER & SONS, Worcester Park, Surrey.
SUTTON & SONS, Ltd., Reading.

GOLF TEE MATS

UNIVERSAL MAT CO., Ltd., Tileyard Road, London, N.7.

GRASS SEEDS

CANNOCK AGRICULTURAL CO., Ltd., Cannock, Staffs.
CARTERS' TESTED SEEDS, Ltd., Raynes Park, London, S.W.20.
MAXWELL M. HART, Ltd., Winnersh, Wokingham, Berkshire.
T. PARKER & SONS, Worcester Park, Surrey.
STEWART & CO., Seedsmen Ltd., Edinburgh, 2.
SUTTON & SONS, Ltd., Reading.

GREENKEEPERS' TOOLS & COURSE EQUIPMENT

R. C. CRAIG, Ltd., 30 Aylmer Road, London, W.12.
H. PATTISSON & CO., Ltd., Stanmore, Middlesex.
T. PARKER & SONS, Worcester Park, Surrey.
"SISIS" Equipment (Macclesfield) Ltd., Hurdfield, Macclesfield, Cheshire.
STEWART & CO., Seedsmen Ltd., Edinburgh, 2.

INSECTICIDES

CANNOCK AGRICULTURAL CO., Ltd., Cannock, Staffs.
T. PARKER & SONS, Worcester Park, Surrey.

LEAD ARSENATE

F. KEEP, Ltd., 82-84 North End, Croydon, Surrey.
T. PARKER & SONS, Worcester Park, Surrey.

ENQUIRY BUREAU.—The Editor desires to point out that he will be pleased to answer enquiries from our readers, and forward to them the name and address of the manufacturer or supplier of any particular proprietary article or product used in the construction, maintenance and upkeep of a golf course. Enquiries are coming in from greenkeepers asking for such information. They may, for example, know the trade name of the article or product they wish to purchase, but may not be conversant with the name and address of the actual manufacturer or supplier. The Enquiry Bureau will gladly supply this information, and thus enable the greenkeeper to contact the manufacturer or supplier direct.

TO MANUFACTURERS.—In order that our information may be kept constantly up to date, manufacturers or suppliers are requested to forward their latest trade lists, catalogues, and any other confidential information regarding their products. By so doing the Bureau will be able to function to the mutual benefit of all concerned.

TRADE REVIEWS.—The Editor will be pleased to arrange to devote space in our editorial columns to a review of our advertisers' products, etc. Will advertisers please forward details for this purpose.

LOAMS & MANURES

T. PARKER & SONS, Worcester Park, Surrey.

MOWER ENGINEERS

RELF & KENDALL, 406 Brighton Road, S. Croydon, Surrey.
T. PARKER & SONS, Worcester Park, Surrey.

MOWERS

BRADLEY'S, Leeds Rd., West Ardley, nr. Wakefield, Yorks.
T. GREEN & SON, Ltd., Smithfield Ironworks, Leeds, 2.
GROSVENOR ENGINEERING CO., Manningham, Bradford.
LLOYDS & CO., Ltd., Pennsylvania Works, Letchworth, Herts.
I. PARKER & SONS, Worcester Park, Surrey.
H. PATTISSON & CO., Ltd., Stanmore, Middlesex.
C. H. PUGH, Ltd., P.O. Box 256, Atco Works, Birmingham, 9.
RANSOMES SIMS & JEFFERIES, Ltd., Ipswich, Suffolk.
HAYTERS (SALES) Ltd., 34 Spellbrook Lane, Bishop's Stortford, Herts.
E. THOMAS & CO. (Oswestry) Ltd. (Dept. S.6), Whittington Rd., Oswestry, Shropshire.

SEA SAND

T. PARKER & SONS, Worcester Park, Surrey.

SPRAY EQUIPMENT

T. PARKER & SONS, Worcester Park, Surrey.
PRESSURE JET MARKERS Ltd., 152 The Arches, Stamford Brook, London, W.6.
B.O.I.L. RAIN SYSTEMS, Upper Halliford, Shepperton, Middlesex.
F. W. BERK & CO., Ltd., Berk House, 8 Baker Street, London, W.1.

TRACTORS

T. GREEN & SON, Ltd., Smithfield Ironworks, Leeds, 2.
T. PARKER & SONS, Worcester Park, Surrey.
H. PATTISSON & CO., Ltd., Stanmore, Middlesex.
"SISIS" Equipment (Macclesfield) Ltd., Hurdfield, Macclesfield, Cheshire.

TURF AERATING APPLIANCES

T. PARKER & SONS, Worcester Park, Surrey.
H. PATTISSON & CO., Ltd., Stanmore, Middlesex.
"SISIS" Equipment (Macclesfield) Ltd., Hurdfield, Macclesfield, Cheshire.

WEED CONTROL

MAXWELL M. HART, Ltd., Winnersh, Wokingham, Berkshire.
MAY & BAKER, Ltd., Dagenham, Essex.
T. PARKER & SONS, Worcester Park, Surrey.

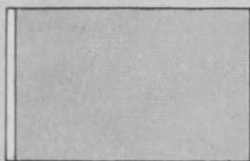
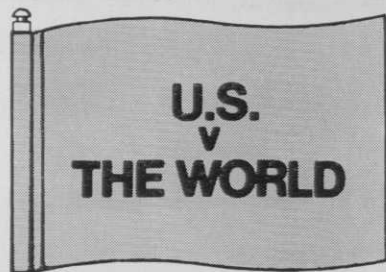
WEED CONTROL SPRAYING

T. PARKER & SONS, Worcester Park, Surrey.

WORM KILLER

CARTERS' TESTED SEEDS, Ltd., Raynes Park, London, S.W.20.
MAXWELL M. HART, Ltd., Winnersh, Wokingham, Berkshire.
T. PARKER & SONS, Worcester Park, Surrey.
SUTTON & SONS, Ltd., Reading.

The touch of distinction



Ransomes range of tasteful, but highly-visible flags and signs add lustre . . . as well as purpose . . . to every course.

The range includes

Personalised Greens flags, with your own insignia silk-screened, and a quick-change, life-prolonging plastic sleeve.

Greens flags, in red, white or yellow nylon.

Flag poles in extra-strong fibreglass, various lengths.



Plus a wide range of Tee Plaques and Markers, Sign and Direction boards, all made in tough, long-lasting Vistolite. They are all illustrated in the latest full-colour leaflet . . . send for it now.

RANSOMES

for perfect golf course grooming

Ransomes Sims & Jefferies Ltd., Ipswich, Suffolk.