

JANUARY
1970 1/-

2ND PAID

The British Golf



Greenkeeper



**SUCK UP
LITTER WITH
PARKAVAC**

PARKERS

This simple to use pedestrian machine does not require a road licence, nor its operator a driving licence. Maintenance costs are low and the machine works equally well on Grass, Gravel, Cinder or other surfaces.

Suction action gathers leaves, cartons, tin cans, grass cuttings, lolly sticks, cigarette ends and paper (including folded newspapers). Price includes 4 Hessian Bags £95.



For a
Complete
Service



T. PARKER & SONS (Turf Management) LTD.
WORCESTER PARK - SURREY - Tel: 01-337 7791 } 10 lines
01-337 0861 }

THE JOINT COUNCIL

FOR

GOLF GREENKEEPER APPRENTICESHIP

Tomorrow's Greenkeepers are needed today.

Training Apprentices on your golf course will ensure that the Greenkeeping skills of the past can help with the upkeep problems of the future.

Hon. Secretary: P. C. French, 3 Skeet Hill Cottages, Daltons Road, Chelsfield, Orpington, Kent.

THE BRITISH GOLF

GREENKEEPER

HON. EDITOR: F. W. HAWTREE



FOUNDED 1912

PUBLISHED MONTHLY FOR THE
BENEFIT OF GREENKEEPERS,
GREENKEEPING AND THE GAME
OF GOLF BY THE BRITISH GOLF
GREENKEEPERS ASSOCIATION

No. 297 New Series

JANUARY 1970

JANUARY

CONTENTS

PAGE	3	GREETINGS
	4	18 HOLES WITH HAWTREE No. 9—THE TEE
	5	SPECIAL OCCASIONS
	6	SITUATIONS VACANT
	7	HON. SECRETARY'S NOTES
	10	HIGH WORK-RATE EQUIPMENT IMPROVES STANDARDS
	12	SOUTHERN SECRETARIES v SOUTHERN SECTION GREENKEEPERS
	14	NEWS FROM THE SECTIONS

President:
CARL BRETHERTON

Vice-Presidents:
SIR WILLIAM CARR
GORDON WRIGHT
F. W. HAWTREE
S. NORGATE
I. G. NICHOLLS
F. V. SOUTHGATE
P. HAZELL
W. KINSEY

Chairman:
H. A. D. FRY
Heathercroft
6 Northway, Bishopston
Swansea, Glam.

Vice-Chairman:
A. ROBERTSHAW

Hon. Secretary & Treasurer:
C. H. DIX
Addington Court G.C.
Featherbed Lane
Addington, Croydon, Surrey
CRO 9AA

Executive Committee:
Carl Bretherton (President)
G. Herrington E. W. Folkes
R. Goodwin S. Fretter
J. Parker J. Simpson
A. A. Cockfield H. M. Walsh
H. Fry (Jun.)

Hon. Auditors:
Messrs SMALLFIELD RAWLINS AND
CO., Candlewick House, 116/126
Cannon Street, London, E.C.4

Hon. Solicitor:
R. A. BECK
21 Lime Street, London, E.C.3

The Association is affiliated to the
English and Welsh Golf Unions.

EDITORIAL AND ADVERTISEMENT OFFICES: Addington Court Golf Club, Featherbed Lane, Addington, Croydon, Surrey. Telephone: 01-657 0281. SUBSCRIPTION RATE: 15/6 for 12 issues post paid. Published during the first week of each month. LATEST COPY DATE: 8th of month prior to insertion. All rights reserved. Reproduction of original articles and photographs in whole or in part is prohibited. This Magazine shall not, without the written consent of the publishers first given, be re-sold, lent, hired out, or otherwise disposed of. Contributions and photographs of interest are invited.

TO INSERT A CLASSIFIED ADVERTISEMENT, write to the Advertisement Manager at the above address. The rate is 6d. per word (minimum 15 words). Remittance must be sent with order. Please state number of insertions required and write advertisement in block letters. Advertisements will be inserted in the first available issue.

By Appointment to
Her Majesty the Queen



Manufacturers of Motor Mowers
Charles H. Pugh, Ltd., Birmingham

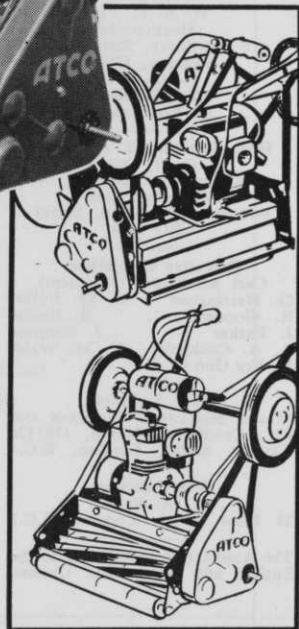
The Atco 20" Special model now gives LONGER SERVICE between services



Atco's 20" Special model now has the 4 h.p 170 c.c. Kohler engine renowned for its high-hourage between overhauls, so essential today for maximum utilisation. That's on top of the many features that make this the perfect machine for all superfine cutting:—

- 12-blade cutter giving 135 cuts per yard
- Ideal weight distribution on anti-scalping short wheelbase
- Lever-operated cutter clutch
- Powered detachable wheels for quick, damage-free travel between greens
- Full-width divided rear roller for manoeuvrability without surface disturbance.

Like all Atco mowers, the 20" Special is backed by a nationwide service network, staffed by experts who are always ready to help solve your particular problems. If you'd like to try the 20" Special on your home ground, we'll gladly arrange a demonstration any time, or send you free literature on the complete Atco range. Just write to:



ATCO the power mower people

CHARLES H. PUGH LIMITED, P.O. Box No. 256, ATCO WORKS, TILTON ROAD, BIRMINGHAM, 9.

Greetings



From the President

I send Christmas Greetings to all members of the B.G.G.A. and hope that the importance of their work will be appreciated by the Golfing Public more than ever in 1970.



From the Chairman

I would like to take this opportunity of sending my best wishes for Christmas and the New Year to all Members and supporters of the British Golf Greenkeepers' Association.



From the Hon. Secretary

*To every member of the Association
I would like to extend my very best
wishes for a Happy Christmas and a
Bright and Prosperous New Year.*

C. H. Dix.



FUSARIUM SPECIFIC

THE CANNOCK AGRICULTURAL CO. LTD., CANNOCK, STAFFS.

Send for free illustrated Brochure

18 HOLES WITH HAWTREE

No. 9 — THE TEE

by FRED HAWTREE

At Hole No. 1 we noticed how important was the player's first impression and how a large tee made it possible to present the course favourably.

Ideally, the same principle should be extended to all eighteen holes especially the Par 3's. If club damage can be spread lightly over a big enough area, the grass will recover by itself and there need be no patching or reurfing. Two hundred and fifty square yards with 350 at short holes, is probably the minimum that can be envisaged at lightly used courses, but 350 and 450 square yards will not be enough if wear is intense and winter play continuous.

Like breweries, the need for economy has led to amalgamation. Surprisingly enough, if a 2 ft. strip round the edge of two tees each 10 yards x 10 yards is not used, nearly 25% of their area is wasted. Connected, they lose only 19%—still pretty considerable. Long narrow tees lose a higher percentage still, though other factors—traffic, location, hole length—may take precedence.

Maintenance is obviously reduced where tees are united but no connection should be made without detailed planning. If the tee-shot is to a fairway or green at a lower level, a long single formation may completely spoil the view of the hole from the back of the tee. At a short hole on one well-known links, the player now looks at a long flat length of tee with the green, as it were, lying at the end of it. All the intermediate land is obscured. It can be argued that the previous wasteful multiplicity of tees was preferable both from the landscape and playing view points.

Certainly where one large tee involves destroying valuable feature, as can often happen on sea-side links, the benefits of reduced maintenance must be very carefully weighed before a decision is made.

The overwhelming desire to join tees has even led to combinations of the tees of two different holes. There is one in

Hampshire resembling the top two-thirds of a Maltese Cross. The idea goes beyond reasonable limits when interference and delays are likely to be introduced.

Visibility problems can often be overcome by "stepping" the tee surface. If the slopes intervening between each level are gradual, say 1 in 4, mowing will not be interrupted, though space is again wasted.

Aesthetically, tees are the least attractive feature of a golf course. Efforts have been made in the past to introduce random shapes instead of rectangles but they have not been generally popular and a flat top on a random shape can often look curious. At the same time, an irregular shape can often be co-ordinated with the direction of the tee shot and surrounding contour to provide something both interesting and acceptable.

Players seem to prefer a tee built up to inspire confidence and some elevation will often be desirable for better drainage. If the surrounding slopes are graded out very gently the flat area will almost disappear and hand work with it.

The teeing ground itself is probably best left dead level. There have been suggestions for a back to front fall at downhill holes and front to back at uphill holes but it is doubtful whether the feasible gradients are significant. A tee can in fact appear level and have a measurable fall.

Complaints will however soon follow if a new tee is wrongly orientated—and the effects of wrong orientation on the tee shot can be noticeable. Players will often allow the trajectory of their club to follow the line given by the tee while aiming in the desired direction. The irregular shape at least avoids this problem.

On most inland soils the dry tee is always going to be more resistant to wear than the wet one. Therefore good drainage is nearly as vital as it is in greens. Modern specifications for clay soils even

continued on page 12



25th



DEC.	9th	Midland Section Lecture—Old Crown Hotel
	10th	Northern Section Lecture
	11th	South West Section Annual Dinner—Shirehampton
	16th	Northern Section Christmas Social
1970 JAN.	7th	Southern Section Lecture

GET
YOUR MOWER
SERVICED NOW

BY SPECIALISTS

MOWER OVERHAULS, REPAIRS AND SPARES ARE OUR ONLY BUSINESS

Ransomes

Authorised service Repair Agents, Sales, Spares and Service.
Main Agents and Distributors to Briggs & Stratton (Engine Manufacturers).
Main agents and distributors for Clinton Engines. Spare parts and service exchange assemblies now available from stock.

Officially Appointed SERVICE DEPOT for

Villiers & JAP



Industrial & Agricultural Engines

HONDA AGENTS

RELF AND KENDALL

406 BRIGHTON ROAD, SOUTH CROYDON, SURREY. CRO 0578
11 STATION ROAD, NEW BARNET. BARNET 8228



Official London Area Distributors to Ransomes, Sims & Jefferies for specialist machines.
Agents for Dennis, Shanks, Greens, Atco, Lloyds and Allen motor scythes.

SITUATION VACANT

HEAD GREENKEEPER REQUIRED due to retirement of present Greenkeeper after nearly 50 years' service. 9 hole course due to be extended to 18 holes next year. Opportunity for keen ambitious man, Salary by negotiation. Accommodation available or allowance in lieu. Write in first instance, giving details of past career and experience to Chairman, Worcestershire Golf Club, Malvern Wells, Worcs.

HEAD GREENKEEPER REQUIRED. Salary according to qualifications. Accommodation available. Apply, stating experience and qualifications to The Secretary, Ham Manor Golf Club, Angmering, Sussex.

GREENKEEPER WANTED. Tunbridge Golf Club requires an experienced Greenkeeper. Applicants to submit personal details to Hon. Secretary, Tunbridge Wells Golf Club, Layton Road, Tunbridge Wells, Kent, as soon as possible.

GREENKEEPER REQUIRED and wife to act as Stewardess for small South Midlands 9 hole golf course. Free accommodation. Profits from catering etc. Please write stating experience and wages required to the Secretary, Rusheden & District Golf Club, 71 Park Avenue, Rusheden, Northants.

EXPERIENCED ASSISTANT GREENKEEPER. Clevedon Golf Club, Clevedon, Somerset. Write stating previous experience.

HEAD GREENKEEPER REQUIRED. Apply in writing to the Secretary, Shipley Golf Club, Beckfoot Lane, Bingley, Yorks. Good Salary. House available.

HEAD GREENKEEPER for large club in the Glasgow area. 36 holes. Top salary for fully qualified man. Write with full details to the secretary, Hilton Park Golf Club, 402 Sauchiehall Street, Glasgow C2.

SHANNON GOLF CLUB REQUIRES HEAD GREENKEEPER. This new course is designed by John Harris to International Championship specifications and construction is now completed. An Automatic Sprinkler system will be installed in the Spring of 1970.

The Club requires the services of an experienced Greenkeeper who must be capable of developing the course to its full potential.

The salary will be not less than £20 per week and a house will be provided free.

Replies, with full particulars to: The Secretary, Shannon Golf Club, Shannon Airport, Co. Clare, Ireland.

R. C. CRAIG

AND CO. LTD.

SPECIALISTS IN THE REPAIR AND MAINTENANCE OF ALL TYPES OF MOWERS

★ Agents for: RANSOMES SIMS & JEFFERIES Ltd

★ LLOYDS & Co. Ltd.
WEBBS LAWN MOWERS

★ Distributors: DENNIS BROS Ltd.

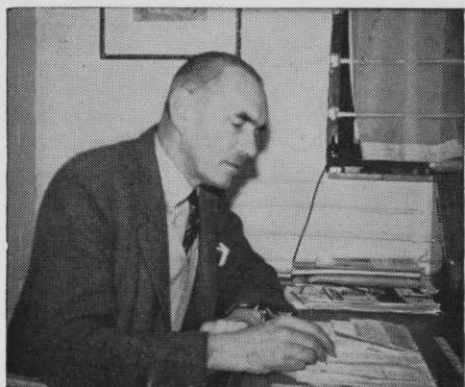
★ GANG MOWERS FOR HIRE

We will gladly call on you to advise on your grass cutting equipment or arrange demonstrations. Ring us now.

★

153 Arch Stamford Brook Station, LONDON, W.6.

RIVERSIDE 5415



HON. SECRETARY'S NOTES

Messrs. H. Pattison & Co., Limited have very kindly taken in their Annual Trophy for modernisation and have advised me that five winners names are missing from the Trophy.

I have been able to trace three of these but we are still looking for the winners in 1951 and 1955.

Can anybody help with this information? If so, please let me know as soon as possible.

C. H. DIX

TOP FRENCH JOB FOR GREENKEEPER DAVID SINGLETON

David Singleton, greenkeeper at Orsett Golf Club for more than six years, leaves this month for his new job in France.

He is becoming head greenkeeper at the Villarceaux Country Club, Chaussy, Nr. Paris, where he will have a staff of sixteen working under him and three golf courses to maintain.

David was short listed for another job in Paris but was just beaten at the finish. He must have made a good impression on the French, however, for he was the first man they approached when the job at Villarceaux became vacant.

His wife, Valerie, their three children, and the dog, will be going with him.

AN INTERESTING APPLICATION FOR ATCO 20" GARDEN SWEEPER

It is well known that the Garden Sweeper plays an ever important role in and around the garden the whole year through, but here is an application, perhaps not considered before, sweeping up the cores after hollow tining on a bowling green. This application was tried out with great success at the Lillington Bowling Club, sited near Leamington Spa, where they brought into use an Atco 20" Garden Sweeper which would normally be used for leaf



collection and tarmac sweeping around the Club House and car-park.

As can be seen from the photograph the collection is most effective and the great advantage of the Atco high tipping collection basket, suitably lined for this application, enabled the collected material to be tipped straight into a barrow or similar container without double handling.

This application could also be used on Golf Greens or indeed anywhere where a tining operation is being undertaken.

The recommended retail price is £13 5s. 0d.



One of the three courses of instruction held at the STRI in the three weeks beginning 13th October. Our picture shows those who attended the first course with the experimental grounds in the background.

Front Row

Mr W. Robertson, Downfield Golf Club; Mr T. Graham, Hayling Golf Club; Mr P. McKenna, Christian Bros. Grammar School; Mr J. A. Davis, Maylands Golf Club; Mr J. Birkett, Turnhouse Golf Club; Mr S. Holden, Mid-Herts Golf Club; Mr D Waller, Pinner Hill Golf Club; Mr J. P. Randell, Robin Hood Golf Club.

Middle Row

Mr R. Fitzpatrick, East Renfrewshire Golf Club; Mr G. Bunting, Coventry Golf Club; Mr M. Livingston, Nairn Golf Club; Mr D. MacKintosh, Dunbar Golf Club; Mr H. F. Masterton, Royal Burgess Golfing Society; Mr J. D. Gallacher, Old Course Ranfurly Golf Club; Mr A. A. Collis, Maidenhead Golf Club.

Back Row

Mr J. T. Hague, Stocksbridge Works Social Serv. Club; Mr D. George, North Cliff Golf Club; Mr S. Flanagan, Rossendale Golf Club; Mr A. W. Murison, Corby U.D.C.; Mr P. Grindley, Ifield Golf Club & Country Club; Mr D. Morrisson, Halifax Bradley Hall Golf Club; Mr P. J. Drummond, Alloa Golf Club; Mr S. Baker, Tiverton Golf Club; Mr B. J. Richmond, Dumfries & County Golf Club; Mr K. Neal, Co. Borough of Burton-on-Trent; Mr E. J. Docherty, Cardross Golf Club.

Next year there will be two courses in the Spring, one in the Summer and either two or three as required in the Autumn. The Spring courses are fully booked but there are still some vacancies for later courses.

The cost cutter



THE NEW MORRISON RANGE

Morrison 20" Golfmaster – Gives first class finish – 144 cuts per yard. Really clean grass collection – no need to swish after use. Unique adjustable one-piece comb lifts lateral growth for even cutting.

Morrison 20" Bowlsmaster – Similar to the Golfmaster, but with special thin section bottom blade for even closer cutting.

Morrison 24" Heavy Duty – A robust mower with strong $1\frac{1}{4}$ " shafted cutting cylinder with divided cutters, giving optimum collection into large capacity grassbox. 72 cuts per yard. Optional trailer seat.

Three keenly priced, sturdily built machines, for Parks, Golf Courses, Estates, etc.

Flymo
INSTITUTIONAL

Greycaine Road, Watford, WD2 4PT
(Watford 41301)

Sole distributors for Morrison in U.K.
and Channel Islands.

HIGH WORK-RATE EQUIPMENT IMPROVES STANDARDS

by D. B. Harrison

Introduction of high work-rate grass cutting equipment at Tyrrells Wood Golf Club this year has already resulted in a significant saving in man hours.

Head Greenkeeper, Mr Bert Watson, who has been with the club for 10 years has two assistant greenkeepers on the 120 acre golf course.

Mr Watson says that they only introduced high work-rate machinery in March this year. Improvement of fairways and greens has been such that members have made a special point of expressing appreciation. "We have never had so many compliments before," Mr Watson commented.

He added: "Although we are still hard at it every day of the week with a staff of only three we are producing better results more easily than would otherwise have been possible."

Describing the factors which contributed, Mr Watson explains that manoeuvrability of their Toro ride-on equipment makes it possible to cut steep slopes and banks that previously had to be cut by hand.

The biggest time saving using high work-rate equipment has been on the greens. The 18 greens can all be cut now by two men in a total of about 7 man-hours a task which once took three men up to 12 man-hours.

It used to take five men to maintain the course properly but with the new equipment the present staff of three can now complete the work more easily with better results.

After a detailed assessment of the grass cutting needs the Club agreed to go ahead and invest in a comprehensive range of new equipment for all grass cutting needs.

They purchased two high work-rate machines, the Toro 11ft. Super Pro and the Toro 70 in. Professional, both power driven gang mowers.

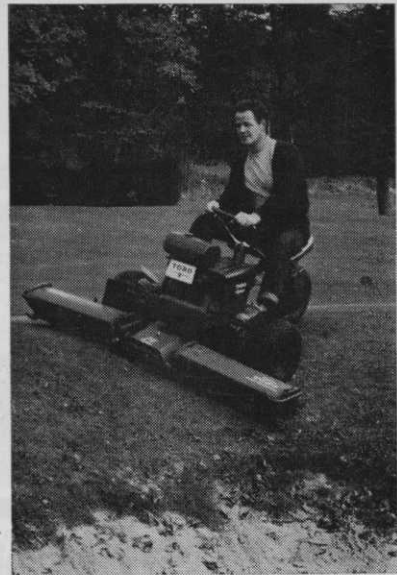
The Super Pro cuts 46 acres a day and handles all the fairways in less than two days and with 50 cuts a yard appears to have produced a denser turf.

The Toro 70 in. cuts aprons and approaches, sloping banks up to 1 in 4, and handles grass up to three inches high. The height of cut control allows for quick adjustment for fine cutting of approaches.

A Flymo 21 in. Contractor air-cushion mower cuts the more difficult banks and grass areas beyond the scope of the 70 in. Toro.

For greens the club uses two Toro high work-rate 21 in. "Greensmaster" models which have resulted in a 50 per cent saving in time and, with 147 cuts per yard, a better sward.

The Club was able to acquire all the machines under a leasing agreement through Flymo Limited of Watford, without a large capital expenditure.



Many Golf Clubs are now having to cope with far less staff than they had a few years ago putting a greater work load on existing staff who still have to get through the same amount of work.

Recent experience at Tyrrells Wood Golf Club shows that the proper utilisation of high work-rate equipment is not only economical but results in improved working conditions for greenkeepers and makes a high standard of professional turf care more easily attainable. Moreover, this type of equipment could help in attracting a high standard of trainee groundsmen, one of today's biggest problems.

The cost cutter



THE FLYMO CONTRACTOR RANGE

High work rate airborne mowers

High work rate over long periods – without operator fatigue. Low running costs. Ideal for golf courses, verges and caravan sites. Flymo Contractors have more power and lower fuel consumption. Rugged engine with on/off switch. Heavy duty bearings and dual air filter system reduce engine wear. 3 position undercarriage, to improve handling in very difficult areas and give easy site-to-site transport, is standard on the 21" and optional on the 19". *The airborne mowers designed for high work load. Ideal for Golf Courses, Caravan Sites, Road Verges.*

Flymo
INSTITUTIONAL
Greycaine Road, Watford. WD2 4PT
(Watford 41301)

**SOUTHERN SECRETARIES v SOUTHERN SECTION GREENKEEPERS
AT BEACONSFIELD ON WEDNESDAY, 15th OCTOBER**

Once again the secretaries fielded a team which just had the edge on the Greenkeepers which enabled them to retain the Challenge Trophy.

It was a glorious day for the middle of October and the way the course was playing was a great credit to Bob Plain, Ernie, Brian and young Claydon.

The Captain of the Secretaries, Air Commodore F. A. Pearce, in accepting the Trophy, said how much he had enjoyed being at Beaconsfield for the occasion.

Replying on behalf of the Southern Section the Secretary congratulated the victors and expressed the hope that this now very popular annual event would continue for many years to come.

The results were as follows:—

SECRETARIES v GREENKEEPERS

	a.m.		
A. Heron & S. MacDonald	0	B. Payne & R. Plain	1
R. Davenport & J. Miller	1	D. H. Major & E. W. West	0
G. Waites & J. O'Dwyer	1	G. Payne & W. Machin	0
E. L. Williams & J. Keenan	1	E. Hall & E. W. Folkes	0
E. G. Smith-Wright & L. Warne	0	R. Whitehead & C. A. Moore	1
J. Adair & P. Myhill	1	F. W. Ford & S. Kilby	0
	<hr/> 4		<hr/> 2
	p.m.		
A. Heron	1	B. Payne	0
R. Davenport	0	R. Plain	1
S. MacDonald	1	D. Major	0
J. Miller	0	E. W. West	1
P. Myhill	0	W. Machin	1
J. O'Dwyer	1	G. Payne	0
J. Keenan	0	E. Hall	1
E. Williams	1	E. Folkes	0
J. Adair	1	P. Whitehead	0
G. Waites	1	C. A. Moore	0
L. Warne	½	F. W. Ford	½
E. Smith-Wright	0	S. Kilby	1
	<hr/> 6½		<hr/> 5½
Match Result	10½		7½

continued from page 4

call for a drainage layer and a soil mix equivalent to those set out for greens. This will be impossible for a whole new course on a tight budget but it is worth considering when new tees are to be made on existing courses. Inward external slopes may also need drainage to cut surface flow or seepage on to the tee. Where these factors have to be considered, soil conditions are also likely to

be those where surfaced paths have to be provided alongside tees to avoid the development of trampled mud, as they do at the other end of the scale on very sandy soil where the surface breaks up.

Many problems will be solved if an acceptable grass substitute can be found for teeing areas. The rubber mat is not the final answer. The new golf course in Alaska is having a nylon tufted carpet for tees.



SISIS AUTO-CUTTER AND TURFMAN ref CUT/12

Showing range of ground management implements (Patent granted or pending home and abroad.)

SISIS Equipment (Macclesfield) Ltd. have introduced a new combined turf cutter and ground management outfit called the Auto-Cutter and Turfman.

The machine has been designed for the sports clubs and local authorities requiring a low priced turf cutting machine that can be utilised for other turf management duties throughout the year.

The Auto-Cutter is powered by a 5 h.p., 4 stroke petrol engine and transmission is by vee belt and roller chains to four studded tread, pneumatic tyred wheels. These wheels provide a very large surface contact area to minimise wheel skid on fine turf. The low centre of gravity and careful weight distribution ensures stability when working on slopes and minimises operator fatigue.

The design incorporates a rigid, horizontal blade located behind two

power driven discs set 12 ins. apart. The cutting depth is controlled by a simple lever mechanism and can be adjusted up to 2 ins. Turf can be cut at a speed of approx. 90ft. per minute (600 sq. yds. per hour).

A unique feature of the Auto-Cutter is its ability to operate standard Sisis Turfman implements. This provides all-season use for the machine for turf maintenance and for surfacing operations on hard porous pitches and running tracks.

The Auto-Cutter is £285 ex works, Turfman implements extra.

New SISIS Brochures are available from SISIS (Macclesfield) Limited on request. These take a new form and are well illustrated and catalogued.

News



from the Sections

MIDLAND

By R. Goodwin

Chairman:
G. HART
(Gay Hill)

Hon. Secretary:
4 Burton Old Road,
Streethay, Lichfield,
Staffs.

Annual Dinner

The Annual Dinner was held at the Walmley Golf Club, Sutton Coldfield, on Friday, 24th October.

There was an attendance of 62 for this year's dinner which was followed by a Film Show.

Mr K. Sargeson presided and we were also very pleased to have among our guests Mr Leo Taylor, the Walmley President, and Mrs Taylor, Mr Duxbry, Vice-Captain, Mr Gibbs, Chairman of the House Committee and Mrs Gibbs, Mr J. R. Greenhalgh, Chairman of the Green Committee and Mrs Greenhalgh.

Once again we were well supported by members of the Trade and everyone was delighted to see, for the first time in many years, a very old friend, Mr Neil Prior.

Our thanks go to the Captain and Committee of the Walmley Golf Club for allowing us to hold the dinner in their magnificent Clubhouse. Thanks also to the evening's speakers, Mr K. Sargeson, Mr Leo Taylor, Mr J. R. Greenhalgh, Mr E. Ballinger, and Mr Neil Prior. We were also indebted to Mr Bill Payne who brought along a very interesting film entitled "The Life and Work of Capability Brown", and Mr Parker for providing a most interesting film "This is your Life", in which many greenkeepers were seen at work.

We also thank Mr Carl Bretherton for providing liquid refreshment, Mr Eric Ballinger and Frank Cashmore together with Geoff Smith for making prior arrangements

and putting in so much work to ensure the success of the Dinner.

Seasonal Greetings

I would like to extend best wishes to our President, Trade Members and Association Members and their families, for a Happy Christmas and joyful New Year.

SOUTHERN

By F. W. Ford

Chairman:
J. K. GLASS
(Thorpe Hall)

Hon. Secretary:
68 Salcombe Gardens
Mill Hill, N.W.7
Tel: 01-959 2847

November Lecture

This talk by Freddy Pyne of Field Drainage had to be shelved for another year owing to the fact that the alterations and improvements to our lecture room were incomplete.

I have been assured by the management of the Stirling Castle that it will be ready for the next lecture and that the seating room will be more than doubled. This is good news indeed for occasionally in the past we have been a little cramped.

With my apologies I would like to thank everyone who turned up for the above lecture and for the way in which they accepted the disappointment.

January Lecture

A representative from Massey Ferguson will talk on M.F. Tractors at 6.30 p.m. on Wednesday, 7th January at the Stirling Castle, London Wall, Moorgate, E.C.2.

Long Service

At their Annual Dinner and Dance Thorp Hall Golf Club presented our Chairman, J. K. Glass, with a cheque for his 35 years service as Head Greenkeeper with the club. Congratulations, Jock!

New Members

We welcome to the section the following new members:—

H. J. Knight (Royal St. George's), S. T. Goddard (Bury St. Edmunds), R. G. Mills (Betchworth Park), and E. R. Small (Hartsbourne).

NORTHERN

By J. Parker

Chairman:
A. ROBERTSHAW

Hon. Secretary:
8 Goit Stock Terr., Harden,
Bingley, Yorks.

Seasonal Greetings

I would very much like to take the opportunity of wishing all the members of the Association a Very Happy Christmas and all the best for the coming year.

Sheffield Match

The Annual Match for the "Slater Cup" against the Sheffield Section was played over the course of the Halifax Golf Club, Ogden on Thursday, 16th October. Fifty members of the two sections were able to get together once again, for an enjoyable afternoon.

In the match for the trophy the section was successful in regaining it by 4½ to 2½ matches.

Our thanks are due to all connected with the club in providing us with a memorable outing. Also to the Club and Captain for their generous "liquid" refreshments.

Spring Tournament

Arrangements have been made for the 1970 Spring Tournament to be played over the course at the Ilkley Golf Club on Wednesday, 6th May 1970 by courtesy of the Club Committee.

WELSH

By S. A. Tucker

Chairman:
M. GEDDES,
23 Fenton Place,
Porthcawl, Glamorgan.

Hon. Sec. and Treasurer:
36 Clase Road, Morriston,
Swansea, Glamorgan.

Greetings

Now that the festive season is very near on behalf of all members of the Welsh section I would like to wish all members of the Association a Very Happy Xmas and a Prosperous New Year to you all.

To all Golf Clubs and Trades I say thank you for your help with my prize fund to make our meetings much more pleasant. Wishing you all Good Luck for the coming year with a Happy Xmas and Prosperous New Year to you all.

NORTH-WEST

By H. M. Walsh

Chairman:
T. BRENNAN

Hon. Secretary:
Horrobin Cottage,
Old Links Golf Club,
Montserrat, Bolton, Lancs.

Lectures

Our thanks to Mr Hewitt of the Longton Service Branch, Preston, (ATCO) for the very interesting talk and demonstration of the various parts that go to make up the engine of the modern motor mower for the professional user, and how to get the best possible results, when handled and maintained properly. Also for the very excellent refreshments provided. Thank you once again.

I would like to congratulate the members for a really good attendance, twenty-nine members came to listen and ask some very good questions which I think were fairly answered by Mr Hewitt.

The December talk will be given by H. Ratcliffe, Esq., of Rigby Taylor Ltd. and G. Smythe of May & Baker Ltd., The venue will be Brunswick Hotel, Piccadilly, Manchester on Tuesday 9th December and the time 7.30 p.m. Please keep up the good attendance—it encourages the speakers.

The speakers for January, February and March will be B. Metcalf, Esq., of Joseph Metcalf Ltd., R. Whyatt Esq., of H. Pattison & Co., and G. Vaughan Esq., of Ransomes Sims and Jefferies Ltd.

Seasons Greetings

On behalf of all members of the section I would like to extend to our President, the Editor, the Hon. Secretary, our numerous friends in the trade, to all greenkeepers everywhere and their families, and in fact to everyone in this business of keeping golf courses fit to play on, our most sincere wishes for a Very Happy Christmas and New Year.

New Member

We welcome to the section the following new member and hope his association will be a long and happy one.

R. C. Bradley, Royal Birkdale Golf Club, Southport, Lancs.

NORTH-EAST

By G. Jeffries

Chairman:
J. SIMPSON

Hon. Secretary:
55 Brackenfield Road,
Framwell Gate Moor, Durham.

William Hood Salver

At our last meeting a vote of thanks went to Mr W. Hood of Tynemouth Golf Club, for presenting the section with a Salver which will be named the William Hood Salver, and which will be played for in the Spring Competition as a Handicap prize.

Sweep Tickets

I congratulate all members who sold tickets for the sweep, the amount collected was £57 15s. 0d. Thanks to Vice President T. Oliver for dealing with the sweep tickets. Tom also sold 116 books which was a grand effort.

Winter Lectures

Arrangements are in hand for the winter series of lectures.

Association Ties

I have now in stock a number of Association Ties which I will be pleased to supply to any member of the section who would like one.

Greetings

On behalf of members of the North East Section, may I take this opportunity to wish all members of the Association and the many Golf Clubs and firms who so kindly support us throughout the year, a Merry Christmas and a Happy and Prosperous New Year.

EAST MIDLAND

By S. Fretter

Chairman:
P. McCARRON

Hon. Secretary:
4 Queens Drive,
Leicester Forest East,
Leicester.

Seasons Greetings

I would like to wish all our members a Happy Christmas and a Prosperous New Year.

Subscriptions

Will all members who have not already paid their subscriptions, do so as soon as possible.

SHEFFIELD

Chairman:
G. HERRINGTON
(Lindrick)

Hon. Secretary:
By H. Gillespie
63 Langsett Avenue
Sheffield, S6 4AA

Slater Trophy

The match against the Northern Section was played at the Halifax Golf Club on the 16th October 1969. Twenty two members travelled by coach and in glorious weather and perfect playing conditions competition for the "Slater Trophy" commenced. The final result was a win for the Northern Section $4\frac{1}{2}$ to $2\frac{1}{2}$, and so we loan the trophy for 12 months.

Coach Cup

The Coach Cup was played in the morning prior to the Northern match, at the Halifax Golf Club over 9 holes. Scoring was difficult over this strange course and the eventual winner was K. Dickinson (Lindrick) $14\frac{1}{2}$ points, second for the third year in succession was R. Maltby (Sherwood Forest) $14\frac{7}{8}$ points.

Lectures

The January 1970 lecture is by Mr D. Hardisty of Messrs Norton Villiers Ltd., on maintenance of Villiers engines.

41 members were present on 30th October when Mr G. Vaughan of Ransomes gave a film show and talk. This was a wonderful turn out and shows the rising interest that is being taken in the section.

Three very interesting films were shown and followed by refreshments to round off a wonderful evening. Thank you Mr Vaughan, Ransomes and Fearnco Ltd.

New Member

We welcome A. Wadkin of Lees Hall Golf Club to the section and hope he will find our activities of interest.

A Merry Christmas and a Prosperous New Year to all.

SOUTH-WEST

By A. Cockfield
Hon. Secretary:
10 Clarence Terrace,
Claverton Down, Bath.

Chairman:
I. SCOONES

Greetings

On behalf of the South West Section may I extend Christmas Greetings to the President, Chairman and Secretary of the Association, to the Editor and staff of the "Greenkeeper", to Greenkeepers everywhere, and to all members of the Trade with sincere thanks for the continued support for 1970.

Annual Dinner

Our Annual Christmas Dinner will be held at Shirehampton on 11th December. Members taking part in the Competition please be available by 12.30 p.m.

FOR SALE

RANSOMES CERTES, reconditioned, prices from £18. 0s. 0d. Varied stock of used gang mowers and Golf Course equipment. Contact the Sussex specialist—Hugh Page (Sussex) Limited. Heathfield 2235, Burgess Hill 41381.

FOR HIRE

SISIS AUTOTURFMAN AERATOR, £25 per week—do it yourself. For contract prices telephone Burnell, Eaglescliffe 3647.

MISCELLANEOUS

PROFESSIONALS AND GREEN-KEEPERS having stocks of used golf balls contact Sparkbrook Golf Ball Co., 295 Highgate Road, Stoney Lane, Birmingham, with a view to filling export orders.

FOR FAST GREENS



FIT A GRASS COMB
TO YOUR MOWER

STEWART & CO.,
FINE TURF SPECIALISTS
EDINBURGH. EH2 2AY

BUYERS' GUIDE

CLINKER, ETC.

T. PARKER & SONS, Worcester Park, Surrey.

CONTRACTORS

GILLIAM & CO. Ltd., Purley, Surrey.
MAXWELL M. HART, Ltd., Winnersh, Wokingham,
Berkshire.

JOHN R. STUTT, Ltd., Potterhill, Paisley, also at
Poole, Dorset.

EQUIPMENT SERVICING

R. C. CRAIG, Ltd., 30 Aylmer Rd., London, W.12.
GROSVENOR ENGINEERING CO., Manningham,
Bradford, Yorks.

REL F & KENDALL, 406 Brighton Rd., S. Croydon,
Surrey.

T. PARKER & SONS, Worcester Park, Surrey.

FERTILISERS

CANNOCK AGRICULTURAL CO., Ltd., Cannock,
Staffs.

CARTERS' TESTED SEEDS, Ltd., Raynes Park,
London, S.W.20.

FISONS HORTICULTURE Ltd., Recreational and
Industrial Dept., Harvest House, Ipswich, Suffolk.

MAXWELL M. HART, Ltd., Winnersh, Wokingham,
Berkshire.

T. PARKER & SONS, Worcester Park, Surrey.

STEWART & CO., Seedsmen Ltd., Edinburgh, 2.

SUTTON & SONS, Ltd., Reading.

FUNGUS CONTROL

CANNOCK AGRICULTURAL CO., Ltd., Cannock,
Staffs.

CARTERS' TESTED SEEDS, Ltd., Raynes Park,
London, S.W.20.

MAY & BAKER, Ltd., Dagenham, Essex.

T. PARKER & SONS, Worcester Park, Surrey.

SUTTON & SONS, Ltd., Reading.

GOLF TEE MATS

UNIVERSAL MAT CO., Ltd., Tileyard Road,
London, N.7.

GRASS SEEDS

CANNOCK AGRICULTURAL CO., Ltd., Cannock,
Staffs.

CARTERS' TESTED SEEDS, Ltd., Raynes Park,
London, S.W.20.

MAXWELL M. HART, Ltd., Winnersh, Wokingham,
Berkshire.

T. PARKER & SONS, Worcester Park, Surrey.

STEWART & CO., Seedsmen Ltd., Edinburgh, 2.

SUTTON & SONS, Ltd., Reading.

GREENKEEPERS' TOOLS & COURSE EQUIPMENT

R. C. CRAIG, Ltd., 30 Aylmer Road, London, W.12.

H. PATTISSON & CO., Ltd., Stanmore, Middlesex.

T. PARKER & SONS, Worcester Park, Surrey.

"SISIS" Equipment (Macclesfield) Ltd., Hursfield,
Macclesfield, Cheshire.

STEWART & CO., Seedsmen Ltd., Edinburgh, 2.

INSECTICIDES

CANNOCK AGRICULTURAL CO., Ltd., Cannock,
Staffs.

T. PARKER & SONS, Worcester Park, Surrey.

LEAD ARSENATE

F. KEEP, Ltd., 82-84 North End, Croydon, Surrey.

T. PARKER & SONS, Worcester Park, Surrey.

LOAMS & MANURES

T. PARKER & SONS, Worcester Park, Surrey.

MOWER ENGINEERS

REL F & KENDALL, 406 Brighton Road, S. Croydon,
Surrey.

T. PARKER & SONS, Worcester Park, Surrey.

MOWERS

BRADLEY'S, Leeds Rd., West Ardley, nr. Wake-
field, Yorks.

T. GREEN & SON, Ltd., Smithfield Ironworks,
Leeds, 2.

GROSVENOR ENGINEERING CO., Manningham,
Bradford.

LLØYDS & CO., Ltd., Pennsylvania Works, Letch-
worth, Herts.

T. PARKER & SONS, Worcester Park, Surrey.

H. PATTISSON & CO., Ltd., Stanmore, Middlesex.

C. H. PUGH, Ltd., P.O. Box 256, Atco Works,
Birmingham, 9.

RANSOMES SIMS & JEFFERIES, Ltd., Ipswich,
Suffolk.

HAYTERS (SALES) Ltd., 34 Spellbrook Lane,
Bishop's Stortford, Herts.

E. THOMAS & CO. (Oswestry) Ltd. (Dept. S.6),
Whittington Rd., Oswestry, Shropshire.

SEA SAND

T. PARKER & SONS, Worcester Park, Surrey.

SPRAY EQUIPMENT

T. PARKER & SONS, Worcester Park, Surrey.

PRESSURE JET MARKERS Ltd., 152 The Arches,
Stamford Brook, London, W.6.

B.O.I.L. RAIN SYSTEMS, Upper Halliford, Shepperton,
Middlesex.

F. W. BERK & CO., Ltd., Berk House, 8 Baker Street,
London, W.1.

TRACTORS

T. GREEN & SON, Ltd., Smithfield Ironworks,
Leeds, 2.

T. PARKER & SONS, Worcester Park, Surrey.

H. PATTISSON & CO., Ltd., Stanmore, Middlesex.

"SISIS" Equipment (Macclesfield) Ltd., Hursfield,
Macclesfield, Cheshire.

TURF AERATING APPLIANCES

T. PARKER & SONS, Worcester Park, Surrey.

H. PATTISSON & CO., Ltd., Stanmore, Middlesex.

"SISIS" Equipment (Macclesfield) Ltd., Hursfield,
Macclesfield, Cheshire.

WEED CONTROL

MAXWELL M. HART, Ltd., Winnersh, Wokingham,
Berkshire.

MAY & BAKER, Ltd., Dagenham, Essex.

T. PARKER & SONS, Worcester Park, Surrey.

WEED CONTROL SPRAYING

T. PARKER & SONS, Worcester Park, Surrey.

WORM KILLER

CARTERS' TESTED SEEDS, Ltd., Raynes Park
London, S.W.20.

MAXWELL M. HART, Ltd., Winnersh, Wokingham,
Berkshire.

T. PARKER & SONS, Worcester Park, Surrey

SUTTON & SONS, Ltd., Reading.

ENQUIRY BUREAU.—The Editor desires to point out that he will be pleased to answer enquiries from our readers, and forward to them the name and address of the manufacturer or supplier of any particular proprietary article or product used in the construction, maintenance and upkeep of a golf course. Enquiries are coming in from greenkeepers asking for such information. They may, for example, know the trade name of the article or product they wish to purchase, but may not be conversant with the name and address of the actual manufacturer or supplier. The Enquiry Bureau will gladly supply this information, and thus enable the greenkeeper to contact the manufacturer or supplier direct.

TO MANUFACTURERS.—In order that our information may be kept constantly up to date, manufacturers or suppliers are requested to forward their latest trade lists, catalogues, and any other confidential information regarding their products. By so doing the Bureau will be able to function to the mutual benefit of all concerned.

TRADE REVIEWS.—The Editor will be pleased to arrange to devote space in our editorial columns to a review of our advertisers' products, etc. Will advertisers please forward details for this purpose.

NEW

20" AUTO-CERTES Large capacity greens mower

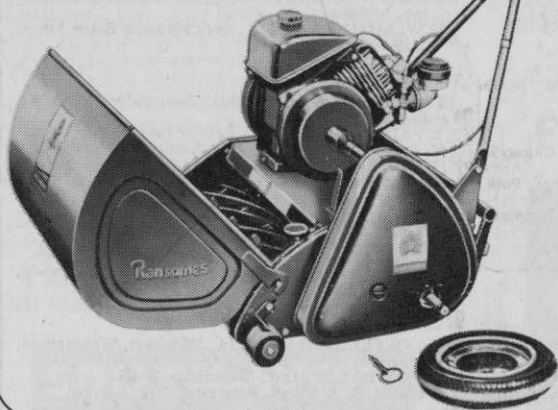
TEN-KNIFE CYLINDER
OF SUPER STRENGTH
IMPACT-RESISTANT STEEL.
STAYS
RAZOR-SHARP—LONGER

WHISPER-QUIET
LONG-LIFE ENGINE
STARTS FIRST TIME
—EVERY TIME

POWERED TRANSPORT
WHEELS WITH BUILT-IN
DIFFERENTIAL SPEEDS UP
SITE TO SITE TRANSPORT

FULL 20" WIDTH OF CUT
18" AUTO CERTES ALSO AVAILABLE
WHERE NARROWER WIDTH OF CUT IS
DESIRABLE

DUAL CONTROL,
OPERATED FROM
THE HANDLES
GIVES COMPLETE
CONTROL



FULL-WIDTH
KICK-STAND
TAKES THE
MOWER'S WEIGHT
WHEN TRANSPORT
WHEELS ARE
BEING FITTED

BRUSH AND COMB SET,
RANSOMES DESIGNED, CAN
BE FITTED BEHIND FRONT
ROLLER FOR CONTROLLED
TURF GROOMING

OUTRIGGER ROLLS HELP
STABILISE MACHINE ON
UNDULATING GREENS.
SUPPLIED AS EXTRAS.

SINGLE-POINT
HEIGHT OF CUT
ADJUSTMENT
FROM $\frac{1}{8}$ " TO $\frac{1}{4}$ "
AT ONLY
 $\frac{1}{64}$ " AT A TIME



RANSOMES

RANSOMES SIMS & JEFFERIES LTD : IPSWICH Telephone: Ipswich 72222 Telex No: 98174

Printed by Lindsay & Co. Ltd., Edinburgh, for "The British Golf Greenkeeper"