

**JUNE-
JULY**
1968 1/-

*The
British Golf*

Greenkeeper



**SUCK UP
LITTER WITH
PARKAVAC**

PARKERS

This simple to use pedestrian machine does not require a road licence, nor its operator a driving licence. Maintenance costs are low and the machine works equally well on Grass, Gravel, Cinder or other surfaces.

Suction action gathers leaves, cartons, tin cans, grass cuttings, lolly sticks, cigarette ends and paper (including folded newspapers). Price includes 4 Hessian Bags £95



For a
Complete
Service



T. PARKER & SONS (Turf Management) LTD.
WORCESTER PARK - SURREY

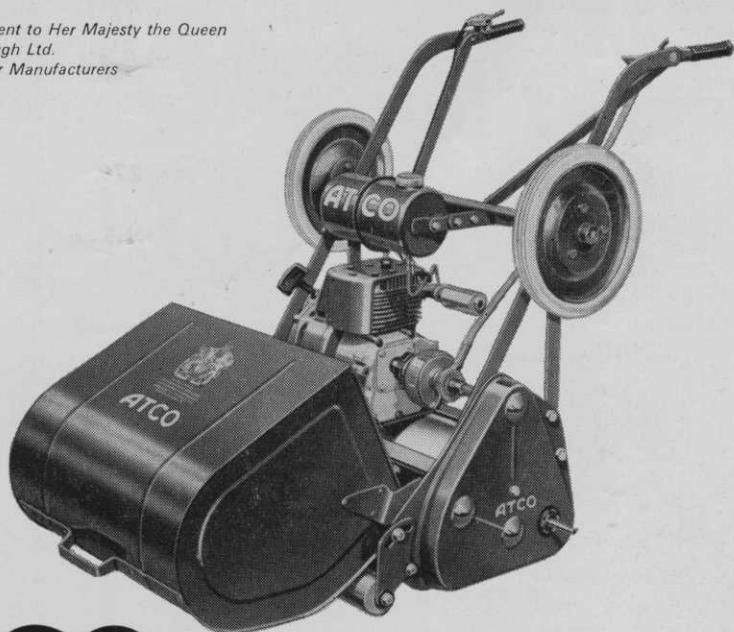
Telephone: DERwent 7791

01-337 0861

10 lines



By Appointment to Her Majesty the Queen
Charles H. Pugh Ltd.
Motor Mower Manufacturers



The **ATCO** 20" Special Model is **Special**

No other model in the Atco range carries the suffix 'special'. This 20" mower has been evolved from years of development and research into the problems associated with mowing golf greens and all fine turf. Among the many features of this purpose-built machine is a 12-bladed cutter giving 135 cuts per yard; optimum weight that enables it to hug the surface without over-compaction; separate new lever-operated cutter clutch and powered detachable transporting wheels for rapid inter-green travel without damage; full width divided rear roller for manoeuvrability without surface disturbance and an amply powered 150 c.c. four-stroke engine. But that's not all; this machine, like all Atcos, is backed by a unique nationwide service network, staffed by grasscutting specialists, always on hand to advise and recommend on your particular requirements.

Little wonder more and more progressive Clubs are turning to Atco.

Let ATCO The best way to judge a mower's capabilities is to see it at work on your own turf. We will gladly arrange a demonstration of this or any other Atco at a time to suit your convenience.
work for you! *If you prefer, free literature is available on request from*

CHARLES H. PUGH LIMITED,
P.O. Box No. 256, ATCO WORKS, TILTON ROAD, BIRMINGHAM 9.

THE BRITISH GOLF

GREENKEEPER

HON. EDITOR: F. W. HAWTREE



FOUNDED 1912

PUBLISHED MONTHLY FOR THE
BENEFIT OF GREENKEEPERS,
GREENKEEPING AND THE GAME
OF GOLF BY THE BRITISH GOLF
GREENKEEPERS ASSOCIATION

President:

CARL BRETHERTON

Vice-Presidents:

SIR WILLIAM CARR

R. B. DAWSON, O.B.E., M.S.C.

F.L.S.

GORDON WRIGHT

F. W. HAWTREE

S. NORGATE

I. G. NICHOLLS

F. V. SOUTHGATE

P. HAZELL

W. KINSEY

Chairman:

C. A. MOORE

19 Vernon Drive
Stanmore, Middlesex

Vice-Chairman:

G. HERRINGTON

Hon. Secretary & Treasurer:

C. H. DIX

Addington Court G.C.

Featherbed Lane

Addington, Croydon, Surrey
CRO 9AA

Executive Committee:

Carl Bretherton (President)

G. Herrington,

C. Campion,

R. Goodwin

S. T. McNeice,

J. Parker,

J. Simpson,

A. A. Cockfield,

H. M. Walsh,

E. W. Folkles,

D. G. Lord

Hon. Auditors:

Messrs. SMALLFIELD RAWLINS AND
Co., Candlewick House, 116/126
Cannon Street, London, E.C.4

Hon. Solicitor:

R. A. BECK

21 Lime Street, London, E.C.3

The Association is affiliated to the
English and Welsh Golf Unions.

No. 279 New Series

JUNE-JULY 1968

DOWN TO EARTH

*When digging up a divot,
I'm not sure whether to hide it,
Ignore it, replace it,
Or maybe subdivide it.*

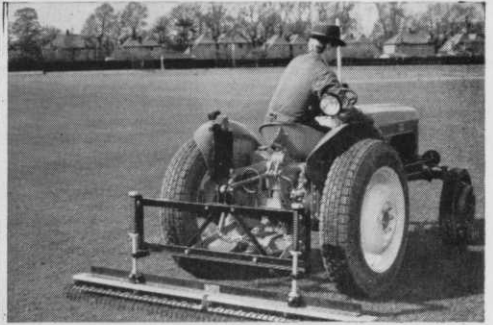
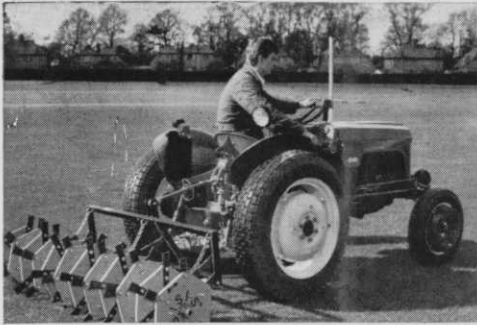
JUNE-JULY

CONTENTS

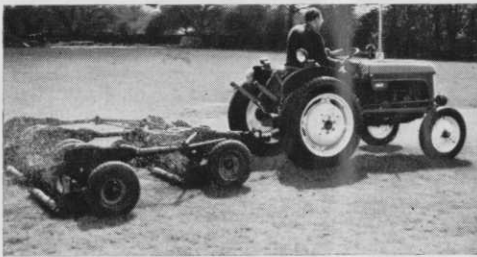
PAGE	3	TEE SHOTS
	5	ELEMENTS OF GOLF COURSE LAYOUT AND DESIGN
	7	HON. SECRETARY'S NOTES
	10	SPECIAL OCCASIONS
	10	ANNUAL TOURNAMENT FORM
	11	NEWS FROM SECTIONS
	15	SITUATIONS VACANT
	16	MRS GREENKEEPER

EDITORIAL AND ADVERTISEMENT OFFICES: Addington Court Golf Club, Featherbed Lane, Addington, Croydon, Surrey. Telephone: 01-657 0281. SUBSCRIPTION RATE: 15/6 for 12 issues post paid. Published during the first week of each month. LATEST COPY DATE: 8th of month prior to insertion. All rights reserved. Reproduction of original articles and photographs in whole or in part is prohibited. This Magazine shall not, without the written consent of the publishers first given, be re-sold, lent, hired out, or otherwise disposed of. Contributions and photographs of interest are invited.

TO INSERT A CLASSIFIED ADVERTISEMENT, write to the Advertisement Manager at the above address. The rate is 6d. per word (minimum 15 words). Remittance must be sent with order. Please state number of insertions required and write advertisement in block letters. Advertisements will be inserted in the first available issue.



**a lightweight
tractor, versatile
yet inexpensive**



BMC MINI TRACTOR

Scaled down in every way except in the capacity to handle hard work the BMC Mini Tractor is exceptionally versatile. Its light weight is a particular advantage in every phase of turf cultivation. Powered by a BMC 4-cylinder diesel engine and available with hydraulics and power take-off the BMC Mini can be applied also to loading levelling, grading, and a variety of work requiring mechanical, hydraulic or pneumatic power. Ask your BMC/Nuffield dealer to arrange a working demonstration with the BMC Mini Tractor.

H.P.U. Model £585. Standard Model £512. 10. 0.

THE **BRITISH** MOTOR CORPORATION LIMITED
(Agricultural Sales Division), LONGBRIDGE, BIRMINGHAM.
Overseas Business: BMC Export Sales Ltd.,
Birmingham and 41-46 Piccadilly, London W.1



TEE SHOTS



by the Editor

Norwich Council which gave up its 18-hole municipal golf course for the new University of East Anglia is back in the golf business. By 26 votes to 10 the Council last month approved the plan for a pitch and putt course in Eaton Park. The total cost of the scheme together with a park for 150 cars is estimated at £12,000.

* * * *

Merton Council in Surrey have already completed their new pitch and putt course which only cost £1,800. It is situated in Morden Park and has nine holes with an average length of 85 yards.

* * * *

Market Drayton has extended its nine-hole course from 5,626 yards to 6,460 yards. The Club has now ten holes but by playing the first and last holes only once and the remaining holes twice members still get round in the regulation 18 holes.

* * * *

Two new driving ranges opened last month, one at Kersley, Bolton, and another at Woodham Mortimer near Maldon in Essex. Kirkby golfers on Merseyside may also be having an American-style driving range, one of the Arnold Palmer Enterprises.

* * * *

Cont'd over

CANNOCK FUSARIUM SPECIFIC
THE CANNOCK AGRICULTURAL CO. LTD., CANNOCK, STAFFS.
Send for free illustrated Brochure

Glasgow Corporation is planning a 400 acres recreation area at Bishoploch near Easterhouse. Football, putting, bowling and sailing are planned to accompany an 18-hole golf course. The Parks Department is also modernising clubhouses at the City's eight municipal courses. The new pavilion at Lethamhill with 720 lockers for men and 79 for women has already been opened. It cost £52,000. Littlehill municipal course is next in line for improvement.

* * * *

Malvern golf course may be going back to 18 holes. It has been reduced to nine since the War when the Ministry of Defence took a large section for Woodfarm Camp. Now the Ministry wishes to dispose of fourteen acres.

FOR HIRE

SISIS AUTOTURFMAN Aerator for hire, £25 per week — Do it yourself. J. B. Burnell, 2 Clarence Road, Eaglescliffe, Stockton on Tees.



ESTABLISHED Tradition

is important to our highly skilled team of maintenance and service engineers. Immediate delivery of spare parts — from the largest stock of spares in the trade. An immediate service exchange assembly (engines, cutting cylinders, magnetos, etc.). Reliable maintenance service to keep your equipment in top working order. Our Service Engineers and Demonstrators are available at any time. H.P. facilities available.

NEW EQUIPMENT ALWAYS IN STOCK

Distributors and Authorised Repair Agents to Ransomes, Sims and Jefferies. Official London Area Distributors for

Ransomes specialist machines

HONDA
Tractors,
Cultivators,
Generators.

Main Agents and Distributors for Clinton and Briggs & Stratton engines

Officially Appointed Service Depot for **VILLIERS & J.A.P.** Industrial and Agricultural Engines.

RELF AND KENDALL

406 BRIGHTON ROAD, SOUTH CROYDON, SURREY. CRO 0578
11 STATION ROAD, NEW BARNET, BARNET 8228



Member of the British Golf Greenkeepers' Association Member of the National Association of Groundsmen

Contractors to : Municipal Authorities, Sports Clubs, Golf Clubs, Reconditioning and Maintenance of all grass cutting equipment.

ELEMENTS OF GOLF COURSE LAYOUT AND DESIGN

Excerpts from the Golf Development Council's newly published booklet. Available from the Secretary, The Golf Development Council. Price 2s. 6d. Plentiful illustrations and details of course equipment and running costs make this booklet a useful addition to the greenkeeper's library.

GREENS

Greens should be visible from the approach shot especially at short holes and have a prepared putting area of between 450 and 850 square yards depending on the internal design derived from the situation, the strategy of the hole, the length and type of approach shot and the degree of use expected. The long axis of the green will generally favour approach from one particular area of the fairway. Slopes in any direction, hollows and undulations may be introduced but like the general outline should be related to the scheme of play. They should never be so extensive that there are insufficient fairly level areas to cut holes and distribute wear, nor so acute that special problems of maintaining an even turf could arise and the progress of a putt become unpredictable. In practice, the more slopes contained in a green the larger its surface. There should be at least one special target area to present the problems of the hole at their best.

The construction and maintenance of the greens are next in importance to the general design of the course, and no money should be spared in providing proper sub-soil conditions and drainage, 10-inch depth of fertile top-soil of suitable texture and reaction, the appropriate fertilisers and the correct strains of grass seed. Good turf is rarely obtainable and the cost seldom justified. The Sports Turf Research Institute, Bingley, Yorkshire, will advise on these matters.

TEES

Tees should not be more than 60 yards from the preceding green but contour or boundaries sometimes override this consideration. They are normally elevated, rectangular and level. External slopes should be gradual to

minimise formality and maintenance. Tees should be of adequate area and number to distribute wear, especially at short holes, and to suit the length of the hole to conditions (e.g. shorter in winter) and type of use (e.g. championship ladies'). Tees of random shape are made but, though logical, are not immediately popular. There should be at least 250-350 square yards of teeing ground at long holes and 350-450 square yards at short holes but tee mats will still be needed on public courses in winter. Long single tees are feasible on reasonably flat sites and reduce mowing time but, on long courses, may waste space between the extreme backs and the forward areas suitable for everyday use. In strongly undulating country, several single tees may be inevitable to overcome problems of visibility and avoid expensive earth-moving.

BUNKERS

Well-sited bunkers cause thought before a shot is played—those punishing only a bad shot, though necessary for the control of play, contribute little to interest. They should not noticeably help judgment of line or distance, and size, shape and relative location should vary constantly. Wing bunkers guarding the green entrance are generally fundamental in the strategy of the hole. Strategy, broadly speaking, reduces the advantage of the safest line of play from the tee or second shot and rewards, by an easier approach to the green or the possibility of finishing closer to the hole, those who have earlier risked carrying or skirting one or more hazards. On these lines the player is stimulated to take stock of his ability and to play his best. Failure at any

(Continued on page 6)

(Continued from page 5)

hurdle should normally leave a chance, however remote, of redeeming error. Penal bunkers placed to catch the mistakes of the weak player may double the penalty. Bunkers should not be excessive where maintenance costs will have to be watched and shrubs, trees, water, hollows, mounds or slopes may all be used with discretion to add interest to play. The formation of the sand area should be carefully linked to surrounding land contours and direction of play. A natural "eroded" face with random outline should be aimed at and, on inland courses especially, related bunkers in a hole should form a coherent design both in play and in landscape effect. On seaside and exposed sites the size of the sand area and its surrounding contours should minimise the risk of scouring by the wind.

FAIRWAYS AND ROUGH

The width of fairways will generally vary between 30 and 45 yards with an irregular outline related to the scheme of play and merging not too obviously with the rough. Inner rough is kept short on most courses to avoid the delay of lost balls. Planting trees and shrubs in the outer rough and as a background to greens and tees will improve appearance and the safety of restricted sites but it should not be relied on unduly for the latter purpose. Separation of holes is desirable but thin avenues down each hole should be avoided. The objections to big leaves, the poisonous effect of pine needles, and the wide root range of certain species should be remembered. A basic mixture of Pine and Silver Birch, suitably relieved, commends itself on several scores. Most flowering or decorative trees and shrubs common in formal gardens are not appropriate in the golfing landscape.

The use of existing planting to frame holes will form part of the initial planning and isolated trees may sometimes be used as potential hazards in play. On small, well-wooded sites it should be remembered that clearing adequate playing widths may destroy the landscape effect of the whole area unless

these are carefully aligned to conform with the general planting scheme. Similarly the value of existing belts of woodland or tree-groups must be carefully weighed against the additional length of holes which might be achieved if they were removed.

GENERAL

Shelters distributed round the course will encourage play in wet weather, and there must be adequate storage under cover for course equipment, machinery, fertilisers and the preparation of compost. A water supply to each green is essential for a high standard of maintenance. Fairway watering is still exceptional. Seats, drinking fountains, bright flags, freshly painted flag sticks and tee markers, tidy fences or hedges, adequate direction arrows and litter baskets all contribute to the general impression of the course. A practice ground and putting green should be provided near the clubhouse with tees for tuition, a practice bunker and distance markers. Practice nets under cover for use in wet weather will be equally useful.

The practice ground will occupy between 3-4 acres if of average dimensions. It will hold many more players if operated on the "driving range" principle. Factors which may be taken into account include a northerly direction of play, protection of teeing areas from wind, descending rather than ascending ground with visibility of the landing area either side of 200 yards, and target greens, posts or defined areas with marked lengths. Width rather than length governs potential use—70 yards by 250 yards would be an acceptable average.

OTHER FORMS OF FULL-SCALE LAYOUT

It is probable that the ultimate interest and challenge of the game of golf will always reside in the standard layout of 18 holes built on the lines described. The infinite variety of this formula, the duration of the round,

(Continued on page 8)



HON. SECRETARY'S NOTES

1968 Annual Tournament

PLEASE NOTE THAT THE entry form for the Annual Tournament is on page 10. Do not delay in returning it to me if you are coming to Skegness.

Annual Draw

Tickets are now in the hands of the Section Secretaries and it is hoped that all members will make a great effort to ensure the financial success of this draw.

Open Championship

The Secretary of the Royal and Ancient Golf Club has again kindly forwarded 12 passes for the "Open" at Carnoustie. Any member who would like to make use of one should apply to me as soon as possible — first come first served.

Accommodation for Skegness

If you are looking for accommodation in Skegness fill in the form below stating your requirements and send it to the Manager, Entertainments and Publicity, Town Hall, Skegness.

KEGNESS OFFICIAL GUIDE ENQUIRY COUPON

Please supply details of terms of

(there insert B/Residence, B/B, Apartments, Flat, Caravan, etc., as required)

which you have available during the period..... to

I require.....Rooms (double, single, family)

to accommodateadultschildren, age.....

Name

Address

.....

.....

Tel. No..... Date

R. C. CRAIG

AND CO. LTD.

SPECIALISTS IN THE REPAIR AND MAINTENANCE OF ALL TYPES OF MOWERS

★ Agents for: RANSOMES SIMS & JEFFERIES Ltd.

★ LLOYDS & Co. Ltd. WEBBS LAWN MOWERS

★ Distributors: DENNIS BROS Ltd.

★ GANG MOWERS FOR HIRE

We will gladly call on you to advise on your grass cutting equipment or arrange demonstrations. Ring us now.



153 Arch Stamford Brook Station, LONDON, W.6.

RIVERSIDE 5415

(Continued from page 6)

and the degree of physical effort involved all seem to fulfil what is expected from the game. There are nevertheless some 482 nine-hole golf courses in the British Isles and there is no doubt that nine holes are better than none at all.

A new scheme started on these lines should provide wherever possible for eventual extension to 18 holes. The potential membership of about 150-200 full-playing members is quickly reached and the congestion arising when those waiting to play have to be intercalated with those starting their second nine diminishes the enjoyment of the round and may drive players elsewhere.

The principles of layout, design, and relative area are identical for nine holes as for 18 with two par-3s, two par-5s and five par-4s, the normal framework to achieve 3,000 yards more or less. Greens and tees will be of equivalent standard and area though, if space permits, alternative tees to vary line and distance in the second round will increase interest.

The clubhouse will be scaled down but even so it will be proportionately more expensive, like the golf course itself, when valued on the basis of potential users.

In sparsely populated districts this formula may well be appropriate or where there is some doubt as to immediate support for 18 holes or where the budget is limited and the second phase could be financed out of income from the first nine.

Near urban areas the nine-hole course is of greatest use when attached to an 18-hole course thus greatly increasing capacity while spreading the cost of the clubhouse over a greater number of players. In these circumstances it is possible to reduce the length of the nine-hole course if space is limited. A layout of 2,000 yards with four of five par-3s will be perfectly acceptable as a relief course and useful for beginners, the elderly, or on summer evenings for anyone with no time for a full round. An addition of this type is also of the greatest value for a municipal course where the proportion of beginners is high and the problems of congestion acute. It need occupy no more than 25-35 acres.

One public course near London reports 40,000 rounds on its short nine-hole course and 60,000 on its 18-hole course though the rounds of members must be added to the second figure.

Where two 18-hole courses are provided it appears undesirable to lower the standard of one in order to benefit the other unless there are very cogent reasons. A full-scale layout cannot fall too far below the average without the risk of reproach and there is a strong case for equality of standard in two courses side by side in order to equalise the load. The natural desire to have one course of high standard will often override this recommendation when space is limited but the better course should not then be planned for a total length which will rarely be used.

**everything
for the Golf
Course**

*Turf cutting machines. Flagstaffs
and Flags. Hose reels. Tee Mats.
Mud brushes. Drag brushes. Sprinklers.
Gang rollers. Harrows. Line Markers.
Tools. Machines of all types for
everything concerned with Golf courses.*

Send for catalogue.

PATTISSON

H. PATTISSON & CO. LTD. STANMORE MIDDLESEX
Telephone: 01-954 4171



When all others have gone home there is still work to be done for the Ransomes Auto-Certes mower on the Centre Court at Wimbledon, coaxing the grass into shape.

CHANGES AT WIMBLEDON

Things are changing a bit this year at Wimbledon—new tennis by professionals, a new head groundsman, Mr R. Twyman, and a new motor mower, the Ransomes 18" Auto-Certes.

For many years, under the former head groundsman, the late Mr Eddie Fuller, a Ransomes hand Certes was used to keep the grass in perfect trim.

Wimbledon will never be the same again—but the grass will still be perfect.

FOR HIRE

AVAILABLE FOR HIRE, WITH or without operator, Ryan turf cutters, Ryan Ren-O-Thin rotorakes, Ryan Greensaire aerators, Sisis heavy-duty spikers, Howard rotavators, excavating and drainage machinery. Coswells, Agricultural and Sportsground Contractors, Croston Road, Farington, Leyland, Lancs. Telephone: Leyland 21243.

JOINT COUNCIL FOR GREENKEEPER APPRENTICESHIP

The name and address of the Hon. Secretary of the Apprenticeship Council is now: P. C. French, 3 Skeet Hill Cottages, Daltons Road, Chelsfield, Orpington, Kent.

MISCELLANEOUS

PROFESSIONALS AND GREENKEEPERS having stocks of used golf balls contact Sparkbrook Golf Ball Co., 295 Highgate Road, Stoney Lane, Birmingham, with a view to filling export orders.

News



from the Sections

SOUTHERN

F. W. Ford

Chairman:
J. K. GLASS
(Thorpe Hall)

Hon Secretary:
68 Salcombe Gardens
Mill Hill, N.W.7
Tel: 01-959 2847

Annual Subscriptions

A REMINDER THAT THE SUBSCRIPTIONS which were due on the 1st May are now: Class A, £1 12s. 6d.; Class B, £1 2s 6d.; Class C, 16s. 6d.

Spring Tournament

The Annual Spring Tournament was played at the St George's Hill Golf Club, Weybridge, on Wednesday, 15th May by kind permission of the Captain and Committee of the Club. A record 70 members took part in the competition and were favoured with good golfing weather. This fine course was in excellent condition due to the efforts of C. R. Cooke and his staff and the day was marred only by his absence. I understand from the Secretary that he is in hospital and we all wish him a successful operation and a speedy recovery. Mr Simmonds, the Captain of St George's Hill, welcomed the Southern Section and presented the prizes which were as follows: Best Morning—D. Singleton (Orsett) 69 net. Best Afternoon—R. Stillwell (Ham Manor) 32 net. 27 holes Scratch Prize—J. Kirkpatrick (Dulwich) 73-38—111. Coming of Age—1st A. E. Creese (Bognor Regis) 75-36—111 net, 2nd S. Morton (Old Ford) 80-37½—117½.

1st Year—1st M. Manderville (St George's Hill) 81-40—121, 2nd R. Rogers (Parkstone) 84-40—124, 3rd A. M. Thomas (Effingham) 84-41—125.

27 hole Medal—1st G. Hitchcock (Coombe Hill) 65-36½—101½ net, 2nd P. Smith (Limpsfield Chart) 68-34—102, 3rd F. Ains-

worth (Finchley) 74-31—105, 4th R. Plain (Beaconsfield) 71-34½—105½, 5th P. Ainsworth (Hampstead) 75-35—110, 6th H. Dixon (Crews Hill) 72-38—110, 7th T. Mason (Hendon) 73-37—110, 8th B. V. Fordham (Tandridge) 72-38—110, 9th D. Major (Bletchworth) 73-37½—110½, 10th R. M. Cooke (St George's Hill) 71-40—111, 11th E. R. West (Broadstone) 74-39—113, 12th F. W. Corner (East Barnet) 74-39—113, 13th E. Hall (Ealing) 79-35—114.

Fifty cigarettes were presented to the next six best scores.

A special thank you to David Craig and Philip Marshall for their usual expert marking of the cards and I should like to congratulate them on still being in possession of their sanity at the end of the day. Thanks, too, to our friends the starters, John Fields, Bill Holloway and Ted Hammond.

Prize Donors

I would like to thank the following firms who contributed towards our prize giving: Messrs R. C. Craig, Ransomes, Pattisons, Maxwell M. Hart, T. Parker & Sons, Flymo Ltd., Atco, Sutton & Sons, Universal Mat Co., B.O.I.L. Ltd., May and Baker Ltd., Kingston House (Mowers) Ltd., F. W. Berk Ltd., Dennis Bros., Pressure Jet Markers Ltd., and W. H. O. Wills, who sent along their representative, Mr Pitts, to present a new cup and cigarettes.

Autumn Tournament

The Autumn Tournament will be held on Tuesday, 10th September, at the Stoke Poges Golf Club, Bucks.

New Members

We welcome to the Section the following new members: E. R. Brignall, M. Fountain, A. E. Calvert, and E. Flynn.

NORTH-WEST

By H. M. Walsh

Chairman:
F. HALSTEAD
(Bury Golf Club)

Hon. Secretary:
78 Hadfield Street,
Oldham, Lancs.

Autumn Tournament

ON BEHALF OF ALL THE MEMBERS, about 46 in all, who took part in the Spring Tournament I would like to say "Thank you" most sincerely to the Captain and Council of Royal Birkdale Golf Club who granted us the courtesy of the course and the facilities of the clubhouse on the occasion of the said Spring Tournament, and A.G.M. in the evening. To the Captain, Mr Jeffrey, for presenting the prizes and the warm welcome he extended to us, also to all the donors of the prizes, our friends in the trade, the Steward and Stewardess for the excellent meal provided, the ground staff for the very good condition of the course, to Messrs E. Barnshaw, J. Wilcocks, N. Holden for their invaluable help in making out the cards, checking scores, taking moneys, etc., and if

there is anyone I have forgotten, please accept our thanks. I think I can speak for all the members when I say an enjoyable day was had by all. A very good attendance of members and visitors took advantage of a reasonable day, a slight shower which hardly dampened the turf and then fine again until we were ready for home at about 9 p.m.

The best net was won by J. Robinson (Grange-over-Sands) with a score of 111 for 27 holes, 2nd K. Gardiner (Ashton Lea) 113. Scratch Prize K. Gardiner 119. Visitors Prize Mr Cordell 75 over 18 holes.

Annual General Meeting

Apologies were read for the absence of our Chairman, Mr Halstead, owing to illness. Mr D. P. Jones, the Vice Chairman, then took the chair. Mr Kinsey was voted President unanimously. Vice Presidents were voted en bloc. Mr T. Brennan of Wilmslow Golf Club was voted Vice Chairman, E. Macavoy—Treasurer, H. M. Walsh—Secretary, Messrs M. Vigard, W. Earnshaw, D. Pate, F. Halstead were all re-elected. J. Rhodes was elected to fill the vacancy caused by the retirement of W. C. Bridges. The meeting then closed with a vote of thanks to the chair.

New Members

We welcome the following new members and hope their association with the Section will be a happy one: R. Vickers (Leigh G.C.), H. Harrison (Gatley G.C.), D. Sydall (Harwood G.C.), J. P. Daley (Hazel Grove G.C.), and Mr H. Ratcliff, Vice President.

Prize Donors

The Captain and Lady Captain, Royal Birkdale Golf Club; the Greens Chairman, Royal Birkdale Golf Club; Mr Cordell; Mr Fielding; Mr F. Halstead; Messrs Joseph Metcalf Ltd.; Rigby Taylor Ltd.; W. Sowerbutts & Co. Ltd.; W. Burrows Ltd.; S.A.I. Horticulture Ltd.; W. Wilcocks & Son; H. Beever & Co.; Sutton & Sons Ltd.; North West P.G.A.

MIDLAND

Chairman:
G. HART
(Gay Hill)

By R. Goodwin
Hon. Secretary:
167 Birmingham Road
Lichfield, Staffs.

MEMBERS WILL BE SORRY TO HEAR of the recent death of Harry Monkhouse, after only a short retirement. Harry, like many greenkeepers in the Midlands, was a native of Scotland, and moved down to these parts during the 1930s, to become Head Greenkeeper at Marston Green Golf Club.

Harry was a loyal Committee Member for many years, and in 1965 became Competition Secretary, although not actually playing golf himself.

Spring Tournament

Prize presentation was made by Dr McCulloch, the Captain of Blackwell Golf Club, who stated that Blackwell would always

welcome the Section at any time they wished to make their course the venue for any of the Section's competitions. Mr Hart, the Chairman of the Section, thanked the Blackwell Club for their kindness and paid tribute to the very fine condition of the course. He went on to thank Mrs Smith, the Stewardess, for the fine way she had looked after the inner man, and also to Simon Fogarty, the Pro., for the loan of caddy carts and also for giving two prizes to the list. We had a fine summer day and everyone enjoyed himself.

After the presentation Mr Pugh thanked the Blackwell Committee for the gift of £20 towards the meal for the day. Also thanks to Mr Greey (Chairman of Greens), Simon Fogarty and Mr Allen (Secretary) for their co-operation in making it a successful day.

Before closing Mr Hart thanked all the Prize donors (listed below) whose kindness helped to make the competition such a success.

Prize Donors

Ransomes, Suttons, Lees, Parker & Bal-lenger, Fisons, E.T.B. Mowers, Tudor Mowers, Sparkbrook Golf Ball Ltd., Unwins Seeds, Bass-Mitchell & Butler, Cannock Agricultural, Blackwell Golf Club, and Messrs Carl Bretherton, B. Baxter, A. Thomas, H. Growcott, R. Bruton, and Simon Fogarty.

My grateful thanks are due to: Mr Bill Payne (Ransomes), Mr D. Gooda (Tudor Mowers), Mr T. Biddulph (Unwins), Mr Peter Wyatt (Pattissons) and Frank Cashmore for their kindness for doing all the cards and scoring. These gentlemen gave up their leisure to make it an enjoyable day for all concerned. Thank you all and anyone else who helped to make it a success.

Visitors Event, 18 holes, Mr L. Hatton (Moor Hall) 71 net; Mr J. Harrison 72 net.

Prize-winners over 27 holes, 1st B. Lowe (South Staffs) 140-31½—108½, Ransomes Cup and gold watch; 2nd A. Boraston (Little Aston) 132-21—111, China tea service; 3rd W. Marnock (Coventry) 119-7½—111½, 1 dozen rose trees; 4th G. Smith (Blackwell) 146-33—113, wine glasses; 5th R. Hughes (Whittington) 140-27—113, head covers; 6th V. Smith (Handsworth) 132-18—114 China beer mugs; 7th W. Boyce (Ladbroke Park) 152-36—116, 1 dozen rose bushes; 8th J. Greely (Haberley) 125-9—116, bottle gin; 9th R. Pugh (Lewis's Gardens) 134-18—116, steel carving dish; 10th D. Brazier (Robin Hood) 138-21—117, ½ dozen Dunlop balls; 11th E. H. Benbow (Handsworth) 128-10½—117½, bottle sherry; 12th A. Stephens (Moor Hall) 145-27—118, 1 dozen golf balls; 13th A. Kite (Streetly) 151-33—118, shoe shine outfit.

Best Gross, R. Goodwin (Whittington) 119 gross.

Played with two's on card, H. Drewitt, one 2; G. Smith, one 2; T. Morris, one 2; T. Jones, one 2; B. Lowe, one 2.

Future Dates

A.G.M. and Summer Tournament at

Haberley Golf Club, nr. Kidderminster, on 1st July Seven-Club competition, by kind permission of the Directors and committee.

Autumn Tournament played at Harbourne Golf Club on Wednesday, 25th September by kind permission of the Committee.

Annual Dinner and Dance to be held at the Merrivale Hotel, Warley, on Friday, 18th October 1968.

President's Match

I am looking forward to putting out a strong team against Mr Bretherton's team at Handsworth Golf Club on Thursday, 20th June and I would be very pleased if all greenkeepers who play golf would make a special effort to come along and support this very fine event. So come along lads, polish up the clubs, and let me have your names by Friday, 14th June.

A.G.M. (Haberley Cup and Summer Cup)

Once again the Directors, Committee and Captain have very kindly offered to sponsor this fine event at the Haberley Golf Club, Kidderminster, on Monday, 1st July.

It will be a Seven-Club competition, and play will commence at 10 a.m. over 9 holes. A further 9 holes will be played in the afternoon, and this will be followed by the A.G.M. and presentation of Prizes.

I am looking forward to a large entry this year to show our appreciation for the kindness

and hospitality extended by the members of Haberley.

Congratulations

To Roger Pullen of Blackwell Golf Club, who has recently married. Our best wishes Roger and Mrs Pullen for a long and happy future.

New Members

I would like to extend a warm welcome to Arthur Boffy of Handsworth Golf Club, and Roy Chandler of the Coventry Club, Finham.

NORTH-EAST

By D. Earsman

Arcot Hall Cottage
Dudley
Newcastle on Tyne 3

J. SIMPSON
(Ponteland G.C.)

Spring Competition

OUR SPRING COMPETITION WAS played over the course of the Gosforth Golf Club on Tuesday, 23rd April, by the kind permission of their Captain and Committee.

The main prize, the President's Prize, was won by G. Gainforth (Tyneside) for the best net score—65; 2nd J. D. Thompson (Goswick) 66; 3rd J. McHuish (Wearside) 71.

Our Chairman, Mr J. Simpson, welcomed everyone present, and hoped that they had enjoyed their day at the Bridge Path, as it

Get onto

GIBBS

DAVID BROWN



770 12-Speed Selectamatic



PERFECT FOR 3-9 GANG MOWING

Sparkling colours (orchid white, poppy red and chocolate brown); up-to-the-minute styling; increased power; golf course tyres; PLUS SELECTAMATIC—the revolutionary simplest-ever hydraulic control system.

SWITCH TO THE 36 bhp 770. Years ahead in looks and performance.

GET ON TO GIBBS FOR FURTHER DETAILS AND A DEMONSTRATION.

J. GIBBS LIMITED

Bedfont, Middlesex
tel. 01-890 5071

Ripley, Surrey
tel. Ripley 3101

Bracknell, Berks.
tel. Bracknell 4222


BY APPOINTMENT
TO HER MAJESTY THE QUEEN
SUPPLIERS OF
AGRICULTURAL MACHINERY
& IMPLEMENTS
AND MOTOR VEHICLES

is commonly known. He then introduced the Captain of the club, Mr Telfer, who said a few kind words on behalf of us all, and very kindly presented the prizes.

Mr Simpson, on behalf of the North-East Section, thanked the Captain and Committee for allowing us the use of the course, the Steward and Stewardess for a very enjoyable meal, J. Snowden, the Professional, for the use of the caddy cars, and congratulated J. Snowden, and his staff for the condition of the course. This was heartily endorsed by all.

To the ladies of Gosforth Golf Club, our thanks for the prizes you brought along to raffle in aid of our section funds, and especially Mrs Nicholson and Mrs Potter who worked selling tickets to the tune of £8 4s. 6d.

Again our grateful thanks to Miss Farr, Ladies Captain, and the ladies of Gosforth Golf Club.

New Members

We welcome to the Section the following new members: G. Proodlock (Wearside), Class C; C. J. Ward (Wearside), Class C; J. Carss, Jun. (Dunstanburgh Castle), Class C.

EAST MIDLAND

Chairman:
J. BURNHAM

By S. Fretter
Hon. Secretary:
20 Woodcote Road,
Leicester, LE3 2WD.

Spring Tournament

OUR ANNUAL SPRING GOLF Tournament was held at Belton Park Golf Club, on Wednesday, 8th May 1968, by kind permission of the Captain and Committee. The entry was very good but the weather was not favourable. The course was in excellent condition, and I would like to thank all who made it a successful day, especially the Captain, Committee and staff of Belton Park Golf Club. I would also like to thank Mr Buckledee and Mr Vaughan for their valued help. The prizes were won by the following:—

Greenkeepers, 1st P. Thomson 72 net; 2nd S. McNeice 73 net (last nine); 3rd D. Bagshaw 73 net (last nine); 4th D. Whitehead 74 net; 5th B. Mott 77 net; 6th A. Shaw 78 net (last eight); 7th I. Toone 78 net; 8th Z. Socha 79 net; 9th G. Arnold 81 net; 10th S. Fretter 82 net (last nine); 11th R. O'Hara 82 net (last nine).

Visitors, M, Scotney 74 net; D. Fogg 76 net (last six).

Vice-President's, R. E. Whitcombe 86 net.

I would also like to thank the following for the prizes: Messrs Ransomes, Sims & Jefferies, Rigby Taylor Ltd., John Player & Sons, G. Ruddle & Co. Ltd., W. Freeman Esq., A. J. E. Cook Esq., President, Bayless & Wylie Ltd., Stuarts Ltd., H. Pattison Ltd., The Leicestershire and Rutland Golf Alliance.

New Members

I would like to welcome the following new members to the section: C. Hardy (Wollaton

Park G.C.), A. W. Murison (Priors Hall G.C.), E. W. Gurney (Kirby Muxloe G.C.), C. E. Fillis (Church Brampton G.C.), K. Senkpiehl (Linedale G.C.), P. A. Hill (Leicestershire G.C.).

NORTHERN

By J. Parker
Hon. Secretary:
8 Goit Stock Terr., Harden,
Bingley, Yorks.

Chairman:
D. ROBERTS
(West Bowling G.C.)

Spring Tournament

THE ANNUAL SPRING TOURNAMENT of the Section was played over the course of the Knaresborough Golf Club on Tuesday, 7th May by courtesy of the Club Committee. Forty-five members took part and a most pleasing feature was the large number of young members taking part.

Results

Scratch Prize—R. Barnes (Sandmoor) 78-76—154.

First Division, 1st A. Robertshaw (Otley) 71-71—142; 2nd P. Ford (Clitheroe) 74-70—144; 3rd G. Mason (Knaresborough) 72-72—144.

Second Division, 1st C. Martin (Fulford) 61-69—130; 2nd K. Daggars (Keighley) 66-68—134; 3rd C. Geddes (Moor Allerton) 68-67—135.

Veterans Prize, H. Driver 74.
Vice-President's, 1st A. Brophy (Sandmoor) 69-68—137; 2nd G. Baxter (Wetherby) 68-75—143.

Following tea the prizes were presented by the Captain of the Club, Mr H. Taylor, who in a short speech thanked the Association for the hard, and often unappreciated, work they put in to give a growing number of golfers a lot of pleasure. A vote of thanks was proposed by our Chairman, Mr D. Roberts, who in his usual short snappy and to the point manner thanked all the members of the club staff for the hard and co-operative work they put in to give members an enjoyable day out.

Our thanks are also due to the following firms who so kindly donated to our prize fund: Messrs H. Pattison & Co., Hayter Ltd., Stewart & Co., Ransomes, Sims & Jefferies, Flymo, Rigby Taylor Ltd., E. Jepson & Co., Stephen Toulson & Son, Pressure Jet Marker Ltd., and Sisis Ltd.

Visit

An open evening was held at the showroom and workshop of our President, Mr W. Mountain, at Morley. Fifty-five members took the opportunity of looking round and meeting and discussing their problems with the various trade representatives present. A short film show was given by Mr A. Howe showing the latest range of SISIS equipment.

Our thanks are due to Mrs Mountain and her assistants for the enjoyable buffet supper laid on.

President's Prize

The competition for the President's Prize will be played over the course of the Howley Hall Golf Club on Monday, 24th June. Play will commence at 3.30 p.m. and members will be allocated partners on arrival. The closing date for entry is Monday, 17th June.

WELSH

Chairman:
M. GEDDES
(Royal Porthcawl)

Pv S. A. Tucker
Hon. Secretary:
36 Clase Road,
Morriston,
Swansea, Glam.

Spring Meeting

OUR SPRING MEETING WAS HELD by the kind permission of the Captain and Committee of the Radyr Golf Club, Cardiff, on the 24th April. The course was in excellent condition and the weather was reasonably good.

The prizewinners were as follows—over 27 hole aggregate—9 holes before lunch and 18 after: 1st John Rees, 105 net, canteen of cutlery; 2nd D. Jones, 109 net, pair of golf shoes given by Mr J. C. Clay, our vice-president; 3rd D. Evans, 109, fruit spoons. Evans lost on last 9 holes.

Our junior division of 19-24 handicap was won by A. E. Jeffries, 126 net, vegetable dishes; 2nd P. Robinson, 138 net, Ronson lighter given by Pattison & Co.

First year competition was won by W. Davies, 145 gross, silver propelling pencil given by May & Baker.

Annual General Meeting

Our Annual General Meeting will be held at the Southerdown Golf Club on 2nd July. I would like all members to make an effort to attend. Please let me know if you are coming by 23rd June at the latest. This meeting is in conjunction with the Secretaries and I must know how many are coming so as to arrange the catering, etc.

D. G. Lord

I am very pleased to let you all know that D. G. Lord is going along very nicely. We were all pleased to see him at Radyr, if only for an hour. I have seen him since and he is looking very much better.

We also have another member on the sick list—D. Dunn from the Glamorganshire Golf Club, Penarth. He has also had an operation but with care he is recovering well. Good luck Dai and Don.

SITUATION VACANT

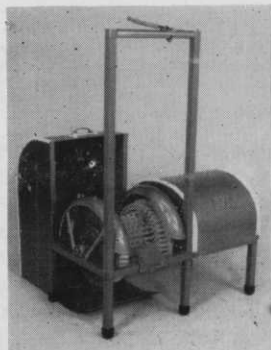
GREENKEEPER REQUIRED FOR 9-hole course in Bucks. Apply in writing, stating age and experience to: W. A. Deane, Hon. Secretary, 15 Tylers Hill Road, Chesham, Bucks. No accommodation.

HEAD GREENKEEPER REQUIRED by Bloxwich Golf Club, Bloxwich, Staffs. Must be experienced, enthusiastic and able to control labour. House accommodation available. Apply in writing giving full particulars to E. L. S. Sanders, Bloxwich Golf Club, Bloxwich, Walsall, Staffs.

CORRECTION

The Toro mower referred to in our last issue under "Editor Mowing" should, of course, have been the "21" self-propelled Whirlwind which is a rotary machine, not the Greensmaster which is a reel mower.

CLEAN CLUBHOUSES



"MUNROTA" £59 10s. EX WORKS
ELECTRIC SHOE CLEANER

STEWART & CO.,
FINE TURF SPECIALISTS
EDINBURGH, 2

Mrs Greenkeeper's Own Corner

with Ann Mawson

Trout is a delicious fish. The fresh-water trout is thought more highly of. They are small fish, rarely more than one pound in weight. They may be cooked in many different ways, but never boil them — the delicious flavour is lost when boiled.

Of course if you have a fisherman in the family you will be sure of your trout being extra fresh, which they really need to be.

Baked Trout

Watercress or chopped parsley, cayenne pepper, salt, four trout, a little butter (2 oz.).

Clean and dry the fish, and season both inside and outside with a little cayenne pepper and salt. Put into a buttered dish and dot with a little butter. Cook until the flesh leaves the bone easily. Remove the fish and put them onto a hot dish with the juice left over from cooking the fish. Serve this with butter sauce separately. Garnish with a little watercress or chopped parsley. This makes a good breakfast dish.

To serve four people.

Fried Trout

Lemon slices, $\frac{1}{4}$ lb. mushrooms, sprigs of parsley or watercress, cornflour, salt and pepper, four trout.

Prepare the fish as before — trout are nearly always served with their heads on. Season well with the salt and pepper and roll the fish in the cornflour and fry in butter allowing both sides to brown well.

Dish up on a hot plate with watercress or parsley. Serve with lemon slices and fried mushrooms.

This is also a good breakfast dish.

To serve four people.

Turbot is another tasty fish. This can be bought both large and small. One good sized steak of a large fish is enough for two people as this is a very

“filling” fish. The smaller fish are filleted, or sold whole. One small turbot is enough for two people.

Cream of Turbot and Cheese

A little cream, garnishing, grated cheese, breadcrumbs, seasoning, white sauce, left-over turbot.

Flake the fish coarsely and put a layer into a greased pie dish. Make some white sauce: about half a pint for two people — for four people you will need a pint — put a layer of sauce over the fish and season well. Carry on in this way until sauce and fish are used up.

Finish with a layer of breadcrumbs and some grated cheese. Bake in a cool oven for half an hour as this dish only needs warming through.

If you like, before baking pour a little cream over it and garnish as liked.

To serve two people.

Turbot Baked Fillets

Two large or four small fillets of turbot, salt and pepper, butter, parsley, a little white wine, *or* equal quantities of water and white vinegar, *or* stock made from the bones of the filleted fish, melted butter, *or* a good sauce.

Wipe the fish and put into a well buttered fireproof dish, season with salt and pepper and sprinkle over a little chopped parsley. Put about half a teacupful of whatever liquid you decide to use over the fish and bake in a moderate oven for half an hour.

Dish the fillets up very carefully on to a hot dish, garnish with cut lemon, or as an alternative, serve in a dish suitable to take to the table, with melted butter, or any sauce which is a favourite with the family.

Tomato or parsley sauce are both good with this.

To serve four people.

— Until July . . .

BUYERS' GUIDE

CLINKER, ETC.

T. PARKER & SONS, Worcester Park, Surrey.

CONTRACTORS

GILLIAM & CO. Ltd., Purley, Surrey.
MAXWELL M. HART, Ltd., Winnersh, Wokingham, Berkshire.
JOHN R. STUTT, Ltd., Potterhill, Paisley, also at Poole, Dorset.

EQUIPMENT SERVICING

R. C. CRAIG, Ltd., 30 Aylmer Rd., London, W.12.
GROSVENOR ENGINEERING CO., Manningham, Bradford, Yorks.
RELF & KENDALL, 406 Brighton Rd., S. Croydon, Surrey.
T. PARKER & SONS, Worcester Park, Surrey.

FERTILISERS

CANNOCK AGRICULTURAL CO., Ltd., Cannock, Staffs.
CARTERS' TESTED SEEDS, Ltd., Raynes Park, London, S.W.20.
FISONS HORTICULTURE Ltd., Recreational and Industrial Dept., Harvest House, Ipswich, Suffolk.
MAXWELL M. HART, Ltd., Winnersh, Wokingham, Berkshire.
T. PARKER & SONS, Worcester Park, Surrey.
STEWART & CO., Seedsmen Ltd., Edinburgh, 2.
SUTTON & SONS, Ltd., Reading.

FUNGUS CONTROL

CANNOCK AGRICULTURAL CO., Ltd., Cannock, Staffs.
CARTERS' TESTED SEEDS, Ltd., Raynes Park, London, S.W.20.
MAY & BAKER, Ltd., Dagenham, Essex.
T. PARKER & SONS, Worcester Park, Surrey.
SUTTON & SONS, Ltd., Reading.

GOLF TEE MATS

UNIVERSAL MAT CO., Ltd., Tileyard Road, London, N.7.

GRASS SEEDS

CANNOCK AGRICULTURAL CO., Ltd., Cannock, Staffs.
CARTERS' TESTED SEEDS, Ltd., Raynes Park, London, S.W.20.
MAXWELL M. HART, Ltd., Winnersh, Wokingham, Berkshire.
T. PARKER & SONS, Worcester Park, Surrey.
STEWART & CO., Seedsmen Ltd., Edinburgh, 2.
SUTTON & SONS, Ltd., Reading.

GREENKEEPERS' TOOLS & COURSE EQUIPMENT

R. C. CRAIG, Ltd., 30 Aylmer Road, London, W.12.
H. PATTISSON & CO., Ltd., Stanmore, Middlesex.
T. PARKER & SONS, Worcester Park, Surrey.
"SISIS" Equipment (Macclesfield) Ltd., Hurdfield, Macclesfield, Cheshire.
STEWART & CO., Seedsmen Ltd., Edinburgh, 2.

INSECTICIDES

CANNOCK AGRICULTURAL CO., Ltd., Cannock, Staffs.
T. PARKER & SONS, Worcester Park, Surrey.

LEAD ARSENATE

F. KEEP, Ltd., 82-84 North End, Croydon, Surrey.
T. PARKER & SONS, Worcester Park, Surrey.

ENQUIRY BUREAU.—The Editor desires to point out that he will be pleased to answer enquiries from our readers, and forward to them the name and address of the manufacturer or supplier of any particular proprietary article or product used in the construction, maintenance and upkeep of a golf course. Enquiries are coming in from greenkeepers asking for such information. They may, for example, know the trade name of the article or product they wish to purchase, but may not be conversant with the name and address of the actual manufacturer or supplier. The Enquiry Bureau will gladly supply this information, and thus enable the greenkeeper to contact the manufacturer or supplier direct.

TO MANUFACTURERS.—In order that our information may be kept constantly up to date, manufacturers or suppliers are requested to forward their latest trade lists, catalogues, and any other confidential information regarding their products. By so doing the Bureau will be able to function to the mutual benefit of all concerned.

TRADE REVIEWS.—The Editor will be pleased to arrange to devote space in our editorial columns to a review of our advertisers' products, etc. Will advertisers please forward details for this purpose.

LOAMS & MANURES

T. PARKER & SONS, Worcester Park, Surrey.

MOWER ENGINEERS

RELF & KENDALL, 406 Brighton Road, S. Croydon, Surrey.
T. PARKER & SONS, Worcester Park, Surrey.

MOWERS

BRADLEY'S, Leeds Rd., West Ardley, nr. Wakefield, Yorks.
T. GREEN & SON, Ltd., Smithfield Ironworks, Leeds, 2.
GROSVENOR ENGINEERING CO., Manningham, Bradford.
LLOYDS & CO., Ltd., Pennsylvania Works, Letchworth, Herts.
T. PARKER & SONS, Worcester Park, Surrey.
H. PATTISSON & CO., Ltd., Stanmore, Middlesex.
C. H. PUGH, Ltd., P.O. Box 256, Acto Works, Birmingham, 9.
RANSOMES, SIMS & JEFFERIES, Ltd., Orwell Works, Ipswich, Suffolk.
HAYTERS (SALES) Ltd., 34 Spellbrook Lane, Bishop's Stortford, Herts.
E. THOMAS & CO. (Oswestry) Ltd., (Dept. S.6) Whittington Rd., Oswestry, Shropshire.

SEA SAND

T. PARKER & SONS, Worcester Park, Surrey.

SPRAY EQUIPMENT

T. PARKER & SONS, Worcester Park, Surrey.
PRESSURE JET MARKERS Ltd., 152 The Arches, Stamford Brook, London, W.6.
B.O.I.L. RAIN SYSTEMS, Upper Halliford, Shepperton, Middlesex.
F. W. BERK & CO., Ltd., Berk House, 8 Baker Street, London, W.1.

TRACTORS

T. GREEN & SON, Ltd., Smithfield Ironworks, Leeds, 2.
T. PARKER & SONS, Worcester Park, Surrey.
H. PATTISSON & CO., Ltd., Stanmore, Middlesex.
"SISIS" Equipment (Macclesfield) Ltd., Hurdfield Macclesfield, Cheshire.

TURF AERATING APPLIANCES

T. PARKER & SONS, Worcester Park, Surrey.
H. PATTISSON & CO., Ltd., Stanmore, Middlesex.
"SISIS" Equipment (Macclesfield) Ltd., Hurdfield Macclesfield, Cheshire.

WEED CONTROL

MAXWELL M. HART, Ltd., Winnersh, Wokingham, Berkshire.
MAY & BAKER, Ltd., Dagenham, Essex.
T. PARKER & SONS, Worcester Park, Surrey.

WEED CONTROL SPRAYING

T. PARKER & SONS, Worcester Park, Surrey.

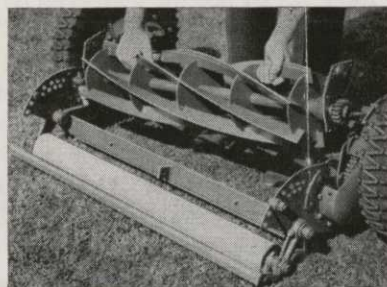
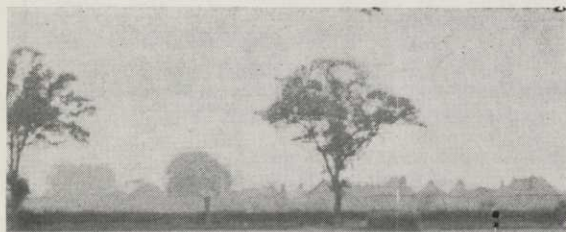
WORM KILLER

CARTERS' TESTED SEEDS, Ltd., Raynes Park, London, S.W.20.
MAXWELL M. HART, Ltd., Winnersh, Wokingham, Berkshire.
T. PARKER & SONS, Worcester Park, Surrey.
SUTTON & SONS, Ltd., Reading.

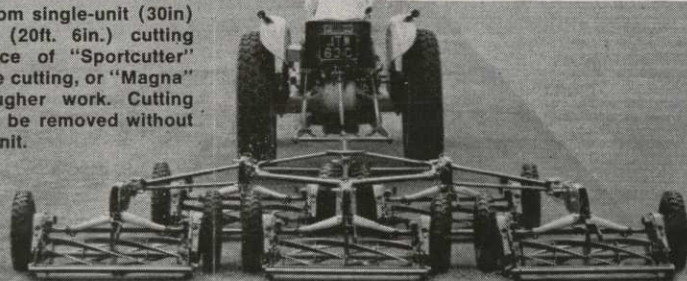
STANDARDISE MECHANISE ECONOMISE

BUY BRITISH - BY RANSOMES!

Today's
most comprehensive range
of quality mowing equipment.
Fully guaranteed
by Ransomes



RANSOMES TRAILED GANG MOWERS. From single-unit (30in) to nine-unit (20ft. 6in.) cutting widths. Choice of "Sportcutter" units for close cutting, or "Magna" units for rougher work. Cutting cylinders can be removed without dismantling unit.



RANSOMES

RANSOMES SIMS & JEFFERIES LTD., IPSWICH. Telephone 0473 72222