

SEPTEMBER  
1967 1/-

U. S. G. A. GREEN SECTION

FERGUSON

SMITH  
FILE



# The British Golf

# Greenkeeper



10 knife high-speed  
cutting cylinder and thin  
bottom blade give the  
**Ransomes AUTO-CERTES**  
unequalled performance.  
Reliable 4 stroke engine  
saves time and temper

Ask your Ransomes Area Sales and Service  
Distributor for a demonstration or write to:—



RANSOMES SIMS & JEFFERIES LTD IPSWICH  
Telephone: Ipswich 72222 Telex No: 98174



## RANSOMES

U.S. & GREEN SECTION  
TELEPHONE

1987

1987

# R

and

# K

\* The letters that represent  
the highest ever standards  
of mower selection and  
service

*(No wonder—the showrooms are  
packed with top-name machinery)*

**RELF AND KENDALL**

406 BRIGHTON ROAD, SOUTH CROYDON, SURREY, CR0 057B  
11 STATION ROAD, NEW BARNET, BARNET B228



THE BRITISH GOLF

# GREENKEEPER

HON. EDITOR: F. W. HAWTREE



FOUNDED 1912

PUBLISHED MONTHLY FOR THE  
BENEFIT OF GREENKEEPERS,  
GREENKEEPING AND THE GAME  
OF GOLF BY THE BRITISH GOLF  
GREENKEEPERS ASSOCIATION

**President:**

CARL BRETHERTON

**Vice-Presidents:**

SIR WILLIAM CARR  
R. B. DAWSON, O.B.E., M.S.C.  
F.L.S.  
GORDON WRIGHT  
F. W. HAWTREE  
S. NORGATE  
I. G. NICHOLLS  
F. V. SOUTHGATE  
P. HAZELL  
W. KINSEY

**Chairman:**

C. A. MOORE  
19 Vernon Drive  
Stanmore, Middlesex

**Vice-Chairman:**

G. HERRINGTON

**Hon. Secretary & Treasurer:**

C. H. DIX  
Addington Court G.C.  
Featherbed Lane  
Addington, Croydon, Surrey

**Executive Committee:**

Carl Bretherton (President)  
G. Herrington, C. Campion,  
R. Goodwin, S. T. McNeice,  
J. Parker, J. Simpson,  
A. A. Cockfield, H. M. Walsh,  
E. W. Folkes, D. G. Lord

**Hon. Auditors:**

Messrs. SMALLFIELD RAWLINS AND  
Co., Candlewick House, 116/126  
Cannon Street, London, E.C.4

**Hon. Solicitor:**

R. A. BECK  
21 Lime Street, London, E.C.3

The Association is affiliated to the  
English and Welsh Golf Unions.

No. 270 New Series

SEPTEMBER 1967

**COMMENT ON THE COURSE**

*Golf builds character, they say,  
And I've a feeling this is so—  
I've seen more characters around  
This place than any spot I know.*

—STEPHEN SCHLITZER

## SEPTEMBER

## CONTENTS

Page	3	TEE SHOTS
	5	ANNUAL TOURNAMENT AND A.G.M.
	7	TOURNAMENT PRIZE LIST
	9	SITUATIONS VACANT
	10	HON. SECRETARY'S NOTES
	10	B.G.G.A. DRAW ACCOUNT
	11	COURSE PREPARATION SAVES RULES TROUBLE. PART II
	14	SPECIAL OCCASIONS
	18	NEWS FROM SECTIONS
	22	ESSEX CAPTAINS v. GREEN- KEEPERS MATCH—REPORT
	23	B.G.G.A. ANNUAL DRAW— RESULT SHEET
	24	MRS GREENKEEPER

EDITORIAL AND ADVERTISEMENT OFFICES: Addington Court Golf Club, Featherbed Lane, Addington, Croydon, Surrey. Telephone: SANDerstead 0281. SUBSCRIPTION RATE: 14/- for 12 issues post paid. Published during the first week of each month. LATEST COPY DATE: 8th of month prior to insertion. All rights reserved. Reproduction of original articles and photographs in whole or in part is prohibited. This Magazine shall not, without the written consent of the publishers first given, be se-sold, lent, hired out, or otherwise disposed of. Contributions and photographs of interest are invited.

TO INSERT A CLASSIFIED ADVERTISEMENT, write to the Advertisement Manager at the above address. The rate is 6d. per word (minimum 15 words). Remittance must be sent with order. Please state number of insertions required and write advertisement in block letters. Advertisements will be inserted in the first available issue.

# NEW

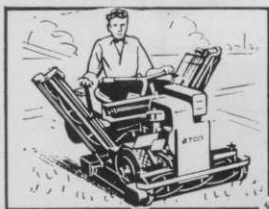
# ATCO 84"

## FULLY-POWERED TRIPLE

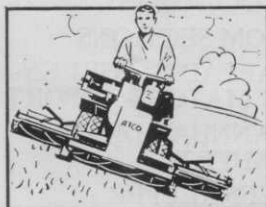
By Appointment to  
Her Majesty the Queen  
Charles H. Pugh Ltd.  
Motor Mower Manufacturers



Each fully-powered cutting unit can be raised to the travelling position comfortably from the seat.



Where the terrain is undulating the articulated mowing units closely follow the contours.



A low centre of gravity and good traction ensures that the outfit clings to the slopes.



- ★ It provides high speed mowing for long continuous periods over a wide variety of conditions.
- ★ All three rugged cutting units are fully power driven and articulated to ensure they hug the ground over surface undulations.
- ★ Multi Speed-change, instantly operated whilst in motion and incorporating a rapid-transport speed and reverse as well as a choice of mowing speeds; provides exceptional versatility.
- ★ All units raised into the transporting position by the operator from the seat.
- ★ The ultra-light steering, exceptional manoeuvrability and general ease of operation make for minimum operator fatigue and maximum efficiency.
- ★ Backed by the unique Nation-Wide Atco Service Organisation.

Demonstrations can be arranged promptly upon receipt of request to Atco

CHARLES H. PUGH LTD., P.O. BOX 256, ATCO WORKS, TILTON ROAD, B'HAM. 9.

# TEE SHOTS



by the Editor

## Ideas wanted

The Annual Tournament at Walton Heath was a great success. But the entry never seems to go up as we get more members. What keeps the other 800 members away? Is it lack of time, cash, interest? We should like to know. Perhaps some other formula with a conference and exhibition is due for a trial. Let us know what you think.

## Dogs on the Range

The Greyhound Racing Association Trust has slipped another £100,000 into the Athlon golf ranges kitty to help it overcome a "considerable trading loss" in its first two years' working. £200,000 had already been sunk in this venture. You can let us know what you think about this too, when writing. Or perhaps we know already!

## Golfing Brothers

Alex Millar of Denham won the Artisan Championship at Walton Heath with two below par rounds of 70 and 72. His brother Jock is now at Burnham and Berrow having left Moor Park. The family has a unique record in golf and greenkeeping.

## Down under

We looked at half a dozen Johannesburg courses last month. At 6,000 feet the air is so thin that the 200-yard posts are put in at 225 yards. The short hole of 215 yards is about average.

*(continued over)*

# CANNOCK FUSARIUM SPECIFIC

THE CANNOCK AGRICULTURAL CO. LTD., CANNOCK, STAFFS.

*Send for free illustrated Brochure*

In winter, the lack of rain leaves fairways and greens burnt brown. But the greens are not "fast" in the strict sense. On the bowling greens, it takes a wood another four seconds to travel the rink when the grass is like glass. Presumably the same thing happens on putting greens. Try it out for yourself. And if you let us know about this too, we shall be inundated with correspondence. Quite a change!

### Recognition

Ted Macavoy was elected an Honorary Member of the Hillside Golf Club last month. This well-deserved honour follows 21 years' service to the club; during the past seven of them he has been actively engaged in the major alterations transforming the course into one of championship standard. Despite all the extra work, he has kept the course in play in impeccable condition and it is good to know that all his efforts have been recognised in this way.

### Tail Piece

Sylvester, pet cat of the Coventry Golf Club, caused considerable concern to the members when it was taken ill.

A vet was called and he diagnosed "excessive drink".

Watched on its further movements Sylvester was seen to be taking refreshment from the drip cups of the sherry bottles.

# PARKERS

**For a  
Complete  
Service**



Call and see us at the Groundsmen's Exhibition.  
**T. Parker & Sons Stand No. 41, Ave. E.**  
**May & Baker Stand No. 76, Ave. G.**

- \* 'Mersil' and 'Merfusan' — the leading turf fungicides
- \* 'Supertox' 30, 'Dicotox' Extra and 'Clovotox'—selective weedkillers for a variety of problems
- \* New — 'Iotox' — controls speed-wells in turf



**SPORTICULTURISTS**

**T. PARKER & SONS**  
 (Turf Management) LTD.     **For May & Baker**  
**Worcester Park, Surrey**     **Turf Products**  
**Tel: DERwent 7791. 01-337 0861. 10 Lines**

Main Distributors

# ANNUAL TOURNAMENT and A.G.M.

## ANNUAL REPORT: 1967

### Administration

We congratulate Mr Frank Cashmore, our Chairman for the past year, and would thank him for the very successful and pleasant manner in which he has carried out his duties. As one of the real stalwarts of the Association, particularly in the Midland Section, it has been a great joy to everybody to have him holding the reins.

It is with deepest sympathy that I must here mention the sad passing of Mr W. E. Moore, who was elected Vice-Chairman, but we were fortunate in obtaining the services of Mr C. A. Moore who kindly took over the office and we look forward to his chairmanship in the forthcoming year.

The Annual Draw was again supported quite successfully although the financial result did not quite reach the figure of the previous years but nevertheless it was a good effort by all members who assisted and we would thank them and congratulate them on the final result. It is most important for members to realise that this draw is a very necessary effort for this Association to maintain a satisfactory financial state of affairs.

I would again like to express our sincere appreciation to the R. & A. for allotting 12 passes for the Open Championship at Hoylake this summer, and we sincerely trust that those who were able to take advantage of this privilege enjoyed the opportunity offered to them.

Members no doubt will be interested to know that the Wage Scale Survey recommended by this Association is still, we think, having a very satisfactory desired effect. Secretaries of golf clubs, particularly where they are seeking additional staff, are frequently asking for information on this question which proves this information is most necessary for all concerned.

For the first time we entered a representative team of this Association in the Artisan Tournament which was held at Moor Park at the end of July. The team representing us were the winners of the senior and junior handicap divisions of our tournament at Little Aston. Mr R. H. Plain returned 152 and Mr A. Boraston 153, both scores unfortunately being just outside the prize list, but our thanks are due to our representatives for a jolly good show.

From information received through the Joint Council of Apprenticeships the Apprenticeship Scheme is still doing good business and the latest figures obtainable show that there are now 72 signed apprentices and a further 36 Deeds issued.

### Membership

We are very pleased to report that the figures as given by section secretaries for the year under review show an appreciative increase in our numbers and our present membership now stands at 766 as against 676 last year, an increase of 90. This we feel sure must be most gratifying to everybody and emphasises the efforts of all those who are working in the interests of the Association.

### Annual Tournament

The 49th Annual Tournament was held at Little Aston Golf Club and was undoubtedly a most successful Tournament. The entry was one of the largest experienced for some years, and the Course, we feel sure, was a joy to all those who took part. Every effort was made on behalf of the Club and the staff to make our visit as pleasant as possible and

*(Continued over)*

## R. C. CRAIG

AND CO. LTD.

SPECIALISTS IN THE REPAIR AND  
MAINTENANCE OF ALL TYPES OF MOWERS

★ Agents for: RANSOMES SIMS &  
JEFFERIES Ltd.

★ LLOYDS & Co. Ltd.  
WEBBS LAWN MOWERS

★ Distributors: DENNIS BROS Ltd.

★ GANG MOWERS FOR HIRE

We will gladly call on you to advise on your grass cutting equipment or arrange demonstrations. Ring us now.



**153 Arch Stamford Brook  
Station, LONDON, W.6.**

RIVERSIDE 5415

we would express our very sincere appreciation to everybody concerned with the arrangements. Our thanks must also be once again expressed for all the generous donations and prizes presented by various firms and individuals.

### Sections

Section activities have again been carried out with the usual enthusiasm to which we are becoming accustomed and our thanks are again due to the Secretaries and their Committees for their endeavours in arranging tournaments, lectures and visits of interest for the members and also our thanks to the firms and organisations who helped to make these arrangements possible.

### The British Golf Greenkeeper

We offer our sincere thanks to the Hon. Editor of our Journal and his staff for the continued successful publication of our Journal. We have also to thank Section Secretaries for local news which is of so much interest within the section areas and we would emphasise that we cannot get too much information of this nature. Our thanks are due to Messrs Lindsay & Co. who produce our publication and we would assure members that every effort is made to ensure that everybody receives his copy each month, but we would again emphasise that we are entirely reliant on section secretaries for keeping the editorial staff full advised on new members, changes of address, cancellations, etc.

### Benevolent Fund

We are happy to report that we have only been called upon for one donation during the year from the Benevolent Fund and as we have received our normal donations the financial balance of this Fund has been maintained.

### F. G. Hawtree Memorial Fund

Three greenkeepers attended the course of instruction at Bingley under the auspices of the F. G. Hawtree Memorial Fund during the year and the trustees are most appreciative of the assistance rendered by clubs who pay the expenses of their greenkeepers when they are attending these courses.

### Sports Turf Research Institute

We would again express our sincere appreciation to the Sports Turf Research Institute for all the assistance and interest extended to our members which can be so helpful when problems arise.

### In Memoriam

We record with sorrow the death of the following members announced in the *British*

# Get on to GIBBS

FOR  
THE

## RANSOMES AUTO-CERTES



The 18" Auto-Certes is specially designed for the highest quality turf on bowling greens, putting and golf greens. It is powered by a 119 c.c. British four-stroke engine and has a ten-knife cylinder giving 106 cuts per yard. Precision adjustment for height of cut is variable between  $\frac{1}{8}$ " and  $\frac{1}{4}$ ", and separate landroll and cylinder clutches assist manoeuvrability and give perfect 'dual control'. Power driven transport wheels, which are attached in a moment are available and the machine is of lightweight construction causing a minimum of ground compaction.

Get on to Gibbs for a demonstration or details — TODAY!

## J. GIBBS LTD

Bedfont, Middlesex Tel: Feltham 5071  
and Ripley, Surrey Tel: Ripley 3101



*Golf Greenkeeper* since our last report:—

W. E. Moore, Vice-Chairman of B.G.G.A.; R. E. Ainscow, President of East Midland Section; Les Wheeler, Vice-President, Midland Section; J. Wroath, Vice-President, North-East Section; W. Burgess, Chairman, North-West Section; W. Gardner, Secretary, Artisan Golfers' Association; and Messrs S. H. Battams, A. M. Gray, J. D. Kenealy, W. Morris, J. Warrender.

By order of the Executive Committee.

*Chairman:* F. Cashmere.

*Hon. Secretary:* C. H. Dix.

**Prize List of the Fiftieth Annual Golf Tournament of the B.G.G.A. at Walton Heath Golf Club, Tadworth, Surrey on Monday, Tuesday and Wednesday, 7th, 8th and 9th August 1967.**

*Programme:*

Monday 7th—Morning, 18 holes (Bogey Stableford); Afternoon, Annual General Meeting at 2.30 p.m.

Tuesday 8th—36 holes Medal, 36 holes Scratch.

Wednesday 9th—Morning, 18 holes Medal; Afternoon, Prize Distribution.

**Prize Winners**

The S.T.R.I. Cup. 18 holes Stableford:

1st Prize (S.T.R.I. Cup and Linen), F. W. Ford, 43 points;

2nd Prize (Hargreaves Cup and Electric Beater), W. F. Machin, 41 points;

3rd Prize (Holdall), A. Boraston, 40 points;

4th Prize (Prestige Can Opener), T. F. Mason, 38 points.

"News of the World" Cup. 36 holes Scratch:

1st Prize (Dinner Service), J. W. Kirkpatrick, 72/73, 145 points.

The Artisan Medal. 18 holes Medal:

(Walton Heath Tankard), D. H. Major, 71 points.

Jubilee Cup Inter-Section. 36 holes Medal:

(3 Tankards), Welsh Section (J. Rees, H. R. Fry, D. Lord), 458 points.

"Coming of Age" Cup (60 years and over). 18 holes Medal:

1st Prize (Bathroom Scales), G. Piggott, 72 points; 2nd Prize (Travel Rug), W. Barton, 75 points.

Senior Division ('plus' to 11). 36 holes Medal:

1st Prize (Ransomes Cup and Gold Watch), D. H. Major, 144 points;

2nd Prize ("Golf Illustrated" Cup, Holdall and Voucher), W. F. Machin, 147 points;

3rd Prize ("Universal" Cup, Electric Toaster), R. G. Goodwin, 147 points;

4th Prize (6 Tudor Tumblers), G. Woodward, 147 points;

(Continued over)



By Appointment to  
Her Majesty The Queen  
Seedsman

# The production and care of Fine Turf

Carters are specialists in the production and blending of the finest grass seed. Carters Tested Seed, Turf Dressings, Fertilisers and Weed Killers are used by the All England Lawn Tennis Club, Wimbledon and leading Golf Clubs and Sports Grounds throughout the country.

## GRASS SEED FOR AUTUMN SOWING

We recommend "Wimbledon All England Mixture" a splendid blend without Ryegrass as used on the courts at Wimbledon.

Prices 1 lb. 8/- 14 lb. 109/- 28 lb. 213/-  
56 lb. 403/- 1 cwt. 784/-

## AUTUMN-WINTER GRASS DRESSING

A special dressing almost entirely of organic origin formulated to avoid forced growth. This is absorbed and stored by the grass roots to ensure a vigorous and healthy sward in the spring. Apply 2-4 ozs per square yard according to the condition of the turf.

Prices 1 cwt. 62/- 5 cwt. at 60/- per cwt.  
10 cwt. at 58/- per cwt. 1 ton £57

Our autumn list of grass seeds, fertilisers, etc., for golf courses, recreation and sports grounds, will be sent to you free on request. Carters' catalogue of spring-flowering bulbs for autumn planting has just been published and will also be sent to you free on request.

**Carters**  
TESTED SEEDS LTD

**RAYNES PARK  
LONDON, S.W.20**

- 5th Prize (Crystal Rose Bowl), A. V. Fordham, 149 points;  
 6th Prize (Round Table), W. Barton, 149 points;  
 7th Prize (Steak Knives and Forks), A. Millar, 150 points;  
 8th Prize (Holdall), V. Crabtree, 150 points;  
 9th Prize (Wallet), E. H. Benbow, 150 points;  
 10th Prize (Key Case), G. Hitchcock, 152 points.

Junior Division (12 to 24):

- 1st Prize ("Pattison" Trophy and Gold Watch), H. A. Fry, 151 points;  
 2nd Prize (President's Cup and Canteen of Cutlery), F. W. Ford, 156 points;  
 3rd Prize ("May's" Cup and Barometer), A. Boraston, 156 points;  
 4th Prize (Golf Bag), S. Morton, 157 points;  
 5th Prize (Stainless Steel Tray), D. Keen, 159 points;  
 6th Prize (Clock), H. J. Drewitt, 160 points;  
 7th Prize (Towels), E. R. James, 160 points;  
 8th Prize (Blanket), I. Scoones, 160 points.

The "Allan Taylor" Cup. 18 holes Medal:

- 1st Prize (Allan Taylor Cup and Vacuum Jug Set), G. Woodward, 70 points;  
 2nd Prize (Verdone Cup and Table Lamp), H. F. Emery, 71 points;  
 3rd Prize (Fish Servers), H. A. Fry, 72 points;  
 4th Prize (Set of Pyrex Dishes), P. G. Ford, 73 points.

*We are indebted to the following who have kindly contributed to our Prize Fund: C. Bretherton, Esq.; Gordon Wright, Esq.; I. G. Nicholls, Esq.; The "News of the World"; The Sports Turf Research Institute; The Professional Golfers' Association; The Artisan Golfers' Association; The Golf Ball Manufacturers' Conference; "Golf Illustrated"; Messrs Berk Ltd.; Messrs British Overhead Irrigation Ltd.; The Cannock Agricultural Co. Ltd.; Messrs Carter's Tested Seeds Ltd.; Messrs R. C. Craig & Co. Ltd.; Messrs Fisons Horticulture Ltd.; Messrs J. T. Goudie & Co.; Messrs Hercules Powder Co. Ltd.; Messrs Maxwell M. Hart Ltd.; Messrs Mays Chemical Manure Co. Ltd.; Messrs May & Baker Ltd.; Messrs T. Parker & Sons; Messrs H. Pattison & Co. Ltd.; Messrs Pressure Jet Markers Ltd.; Messrs Ransomes, Sims & Jefferies Ltd.; Messrs Relf & Kendall; Messrs Stewart & Co. Seedsmen Ltd.; Messrs Sutton & Sons Ltd.; Messrs Allan Taylor (Engineers) Ltd.; Messrs Universal Mat Co. Ltd.; Messrs Charles H. Pugh Ltd.*

**MISCELLANEOUS**

PROFESSIONALS AND GREENKEEPERS having stocks of used golf balls contact Sparkbrook Golf Ball Co., 295 Highgate Road, Stoney Lane, Birmingham, with a view to filling export orders.



**leave it  
to the Litamisa**

Link the Litamisa to your tractor and collect litter, leaves and grass cuttings from fairways, semi-rough and access roads in one, clean sweep.

The Litamisa **power sweeps** and collects in one operation; clears a six feet wide path and leaves an immaculate surface behind it. One man can operate the Litamisa and empty the 72 cubic feet capacity hopper **without leaving his tractor seat**. Built for year-round operation, the Litamisa can pay for itself in one season.

The Litamisa can be operated by most tractors with hydraulic linkage and power take-off drive. The whole machine is raised for transport between sites by the tractor. The rotary brush is power driven by the PTO; vital to efficient sweeping.

Please write for details or ask us to demonstrate on your course.



Litamisa trade mark. Patents applied for at home and abroad. Designed and manufactured by

"Sisis" Equipment (Macclesfield) Ltd  
 Macclesfield, Cheshire  
 telephone: Macclesfield 6363

## SITUATIONS VACANT

**FIRST ASSISTANT GREENKEEPER** required. Sound knowledge of greenkeeping essential. Salary by negotiation. Modern cottage provided. Apply the Secretary, Ellesborough Golf Club, Butlers Cross, Aylesbury, Bucks.

**HEAD GREENKEEPER REQUIRED** by Effingham Golf Club, Surrey. Accommodation will be provided. Wages to be negotiated but not less than £20 per week. Application in full to the secretary.

**HEAD GREENKEEPER REQUIRED** for an established 18-hole course. Must be fully experienced in all aspects of course maintenance. Apply in writing, stating age, experience, and wage expected, to Hon. Secretary, Saltburn-by-Sea Golf Club Ltd., Hob Hill, Saltburn-by-Sea, marked "Head Greenkeeper".

## CITY OF SOUTHAMPTON

### Appointment of

### HEAD GREENKEEPER

Salary Grade Miscellaneous VI  
(£950-£1,040 p.a.)

Applications are invited for this appointment at the Municipal Golf Course. Candidates should have had extensive experience as greenkeeper, and preferably hold the Diploma of the Institute of Turf Culture or of the National Association of Groundsmen.

Overtime payable for hours in excess of 40.

Tenancy of modern house on course at weekly rental. Approved removal expenses to maximum of £50.

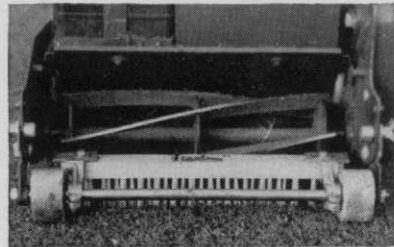
The appointment will be superannuable and subject to the passing of a medical examination.

Application forms from the City Engineer and Surveyor, Civic Centre, Southampton, SO9 1BS, to be returned by Friday, 6th October 1967.

**GREENKEEPER — MARRIED REQUIRED**, fully experienced, wife to undertake occasional simple catering, also cleaning (separate wage). Modern two-bedroomed flat, rent and rates free. Full particulars, including age and wage required, to: The Hon. Secretary, Mid Herts Golf Club, Wheathampstead, Herts.

**GREENKEEPER REQUIRED. PRIVATE** 6-hole course near Henley. Accommodation provided or paid for. Write Box No. 1967.

**RYAN TURF CUTTER** for hire, with or without operator. G. Bunting, 14 Finham Green Road, Coventry, COV 68653.



**STEWART'S FINALAWN BRUSHES  
FROM 47/6**

**STEWART & CO.,  
SEEDSMEN LTD.  
EDINBURGH, 2**



**HON. SECRETARY'S NOTES**

**ARTISAN GOLFERS' ASSOCIATION  
ANNUAL TOURNAMENT  
WALTON HEATH—JULY 1967**

Members will no doubt be interested in the Artisan Golfers Association's Annual Tournament, held at Walton Heath last July, in which for the first time we entered a representative team from the British Golf Greenkeepers' Association.

As will be seen from the results below, our representatives Messrs R. H. Plain and A. Boraston just missed the prize list, but nevertheless made a grand effort, and we congratulate them both on their scores.

Champion: Alex Millar, Denham, 70 and 72 (from scratch);

Senior Division: W. Bossom, Sackville and Cooden Beach, 142;

Junior Division: M. Young, Hindhead Club, 134;

Team Prize: Gross, West Byfleet, 329; Handicap, Chorleywood, 292.

B.G.G.A. Seniors: R. H. Plain, 152; Juniors: A. Boraston, 153.

Owing to the limited space in this edition the Minutes of the Annual General Meeting of the British Golf Greenkeepers' Association will appear in the October issue.

**BRITISH GOLF GREENKEEPERS' ASSOCIATION**

**ANNUAL DRAW**

**1967 ACCOUNT**

12,083 Tickets @ 6d.	- £302 1 6	Prize Money	- - - £100 0 0
		Printing Tickets	- - 25 0 0
		Printing Results	- - 5 18 0
		Postage, Stationery	- - 9 12 0
		Balance in hand	- - 161 10 9
	<hr style="width: 20%; margin-left: 0;"/>		<hr style="width: 20%; margin-left: 0;"/>
	£302 1 6		£302 1 6
	<hr style="width: 20%; margin-left: 0;"/>		<hr style="width: 20%; margin-left: 0;"/>

## Part II

# COURSE PREPARATION SAVES RULES TROUBLES

By **RICHARD S. TUFTS**

Former President and Former Chairman of Rules of Golf Committee,  
United States Golf Association

### OBSTRUCTIONS

**T**HE subject of obstructions requires the co-operation of both the architect and the superintendent. Basically, an obstruction is something that does not belong on the course but usually has been placed there for some practical purpose (Definition 20). Since obstructions should not enter into the play of the course, they must be located as far from the playing area as is practical. This would apply especially to such obstructions as rain shelters, equipment sheds, storage basins and the like. The location of bridges, drains, cart paths when classified obstructions etc., close to the line of play is also undesirable; and where such a situation cannot be avoided it is well, as much as possible, to cover the masonry work with gently sloping earth fills. The same policy should be adopted with any artificial work not classified as an obstruction, such as cart paths, the surfacing of stream banks and retaining walls for bridges. Good planning by the architect is of first importance.

### MINIMIZING LOST BALLS

Under the heading of lost balls, there is again need to require the co-operation of the architect. There is a substantial difference in the penalties and the operation of the Rules for a lost ball (Rule 29-1), a ball in a water hazard (Rule 33-2), and a ball out of bounds when the Local Rule is in use (Page 57 in U.S.G.A. Rules book). Whether a ball is lost in long grass or has entered a water hazard can mean a difference of one stroke to the golfer.

To avoid possible confusion in the application of these dissimilar Rules, it is well in both design and maintenance to eliminate conditions which might lead

to a ball's being lost in the vicinity of water hazards and of out of bounds where the Local Rule is used.

Though it has no direct bearing on any Rule situation, it is also well not to have any condition where balls might be lost near the normal line of play. Not only is a lost ball a painful experience to a golfer, financially and penalty-wise, but also the time required to hunt for a ball is certain to delay play. Course "jungles" should be avoided by the architect and, if that be impractical, they should be cleared out by the superintendent.

There are a few Rules which the superintendent needs to bear in mind during his daily maintenance of the course.

### GROUND UNDER REPAIR

If repair work could create any unfair situation for players, it should be promptly and properly marked as ground under repair (Definition 13). Piles of putting green clippings, which are ground under repair by definition, do not require to be marked, but they should be located well away from the normal playing area.

### TEE MARKERS

In setting out tee markers, the size of the tee (Definition 32) should be borne in mind and the markers never placed so far back that the player is deprived of the two club-lengths good teeing surface to which, by the Rules, he is entitled.

### INTERFERING WITH BALL

Workmen should be cautioned about any interference with a ball in motion

*(Continued on page 14)*

# By Flymo! Here's how to cut cutting costs in half



**Smoothest! 21" Toro Greensmaster.** The machine thoroughly tested by Moor Park and Wentworth Golf Clubs and used during preparations for the Esso and Piccadilly Tournaments, 1966. The machine that will give *your* green a really superb finish and cuts cutting time on a 18-hole course by 3 hours! The Greensmaster gives 147 cuts to the yard. It's unique floating action isolates the cutter from the traction and catcher units. So there's no gouging or digging. No engine vibrations to disturb the cut. Greensmaster is powered by a 3 h.p. four-stroke Tecumsh engine. If you've any of those really difficult plateaux or undulating greens scored by your present machines—you must see how the Greensmaster achieves perfection.

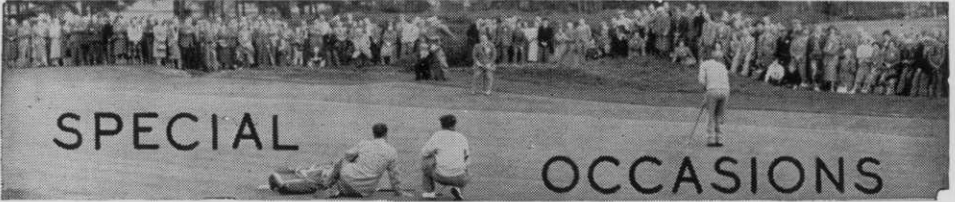
# TORO. by Flymo

mowing made easy



**Fastest! 70" Toro Professional.** Ideal for bunkers and aprons. The power driven gang mower that cuts cutting time. Toro Professional has three 25" blades, 7" diameter cutting cylinders. Can be adjusted without tools for cutting heights of  $\frac{1}{2}$ "— $2\frac{1}{2}$ ". Stellite bottom blades, hard coated to give almost unlimited life, make the five bladed cutting cylinder self-sharpening. Low centre of gravity gives real stability—and the single rear-wheel steering ensures superb manoeuvrability. Big pneumatic tyres prevent turf damage. The Professional is powered by the 6.25 h.p. Kohler engine, with large capacity tank.

**Cut your costs with Toro—by Flymo. See your Flymo Distributor for a demonstration. Or write directly to Institutional Division, Flymo Limited, Greycaine Road, Watford, Herts. And remember—Flymo guarantee availability of all Toro models and spares, all over the country.**



- |                  |   |  |
|------------------|---|--|
| <b>SEPTEMBER</b> | 12th  | Midland Autumn Tournament — Moor Hall G.C.               |
|                  | 14th  | Southern Autumn Tournament — Langley Park G.C.           |
|                  | 19th  | East Midland Autumn Tournament — Wollaton Park G.C.      |
|                  | 19th  | Sheffield Trip to N.A.G. Exhibition.                     |
|                  | 21st  | Northern Match with Sheffield — Otley G.C.               |
| <b>OCTOBER</b>   | 22nd  | Midland Annual Dinner — Merry Vale Hotel, Langley Green. |
|                  | 28th  | North-East Annual Competition — Northumberland G.C.      |
|                  | 4th   | Welsh Autumn Meeting — Pennard G.C.                      |
|                  | 4th   | North-West Autumn Tournament — Haydock Park G.C.         |
|                  | 11th  | Southern Winter Lecture, Stirling Castle, Moorgate.      |
|                  | 17th  | North-West Winter Lecture, Garrick Hotel, Manchester.    |
|                  | 25th  | North-West Annual Trip to Slazenger's.                   |
| 26th             | Northern Autumn Tournament — Alwoodley G.C. |  |

*(Continued from page 11)*

(Rule 26) or at rest (Rule 27). If equipment is left on the course, such as rakes for bunkers, it should always be placed where least likely to be struck by a ball.

upsetting to the golfer than to play hole after hole on which all the cups have been cut, for example, in the left rear part of the green.

*(Part III will appear in October.)*

#### NEW CONDITIONS AFFECTING PLAY

The proper authorities at the clubhouse should always be notified of any condition on the course which might affect play, such as an excessive accumulation of casual water (Definition 8), ground under repair created by work on the course (Definition 13), conditions due to rain or over-watering which might cause balls to embed (Local Rule, page 58), etc.

#### LOCATING CUPS

Although the Rules are not concerned with the location of the hole on the putting green, it is good practice to leave at least five yards of reasonably level area between the hole and the edge of the green and to set no cups close to steep slopes or changes in slope. It is also good practice to move the cups daily but to avoid a lot of similar locations for the same day. Nothing is more

## ST ANDREWS WILL CLOSE ITS COURSES

In October, for the first time, all four golf courses at St Andrews are to be closed for play to the public for almost a week.

The closure begins on Tuesday, 3rd October, when play over the old course begins in the £56,000 Alcan Tournament. It ends on Sunday, 8th October, but will be extended to include Monday, 9th October, if a play-off is necessary.

Until now, St Andrews Town Council have been bound by law to keep other courses open for play during major events. A new order gives the council power to close the whole of the links. The order also removes the limit which the town council may charge spectators.



It's what you do  
this autumn  
that will bring you  
pleasure next  
spring

Autumn is one of the busiest times for a Groundsman and Berk offer a comprehensive range of pesticides and fertilizers for Autumn/Winter application, designed to help him obtain first class turf during the following Spring. For full details of this range see overleaf.

Make full use of Berk's FREE advisory service—it's headed by Bert Lock, Head Groundsman at The Oval for more than 20 years, and one of Britain's leading turf experts. The service is there should you require assistance.



# Berk comprehensive autumn/ winter turf treatments backed by a unique FREE advisory service

IF THIS IS YOUR PROBLEM  
BERK HAVE THE ANSWER

	Application Rate	Timing	Mixing
<b>Feeding</b>			
Berk Autumn/ Winter Fine Turf Hardener (3:5:10)	5 cwts. per acre, 2 ozs. per sq. yd.	September/October	
Berk Autumn/ Winter Outfield Turf Hardener (3:8:10)	5 cwts. per acre	September to January	
<b>Weedkilling</b>			
Berk Weedkiller (Standard) 2,4-D	2-3 fluid ozs. per 100 sq. yds.	Warm dry weather during early Autumn	Half gallon of water per 100 sq. yds.
Berk Weedkiller (Super) 2,4-D + CMPP	2-4 fluid ozs. per 100 sq. yds.	Warm dry weather during early Autumn	Half gallon of water per 100 sq. yds.
Berk Clover Killer CMPP	6-8 pints per acre	Warm dry weather during early Autumn	20-50 gallons of water per acre
<b>Moss Control</b>			
Berk Moss Killer	4 ozs. per sq. yd. 10 cwts per acre	Any time during the year but especially prior to normal Autumn treatments	
Berk Moss Eradicant	4 ozs. per sq. yd. 10 cwts. per acre	Any time during the year	
Berk Mercurised Turf Sand	4 ozs. per sq. yd. 10 cwts. per acre	Not later than September	Water in during dry spells
<b>Wormkilling</b>			
20% Chlordane Worm killer (granular)	80 lbs. per acre	Apply in showery weather when worms are most active	
25% Chlordane Worm killer (liquid)	1 gallon per 1000 sq. yds.	Apply in showery weather when worms are most active	1 gallon in 20 gallons of water
<b>Fungi Control</b>			
Berk Turf Fungicide ...	1 oz. to 40 sq. yds.	As and when necessary	Liquid-1 oz. in 2-8 gallons of water. Powder -1 oz. in 14 lbs. of fine dry sand
<b>Top Dressing</b>			
Berk Fine Turf Top Dressing (contains Bedford Sand, Neals Kettering Loam & Fine Sedge Peat—parts by weight 3-2-1)	Autumn/ Winter— 5 lbs. per sq. yd. 10 tons per acre. Spring—3 lbs. per sq. yd. 6 tons per acre	Late September onwards, but not when frost prevails  Late February to mid-March	Ready Mixed

Fill in and send off this coupon now

**Guide to Area Cost**

1000 sq. yds.	Lawn Tennis Court	Cricket Table	Bowling Green	Acre
65/-	40/-	38/-	104/-	277/6d.
				52/6d. 205/-
2/1d.	8d.	1/4d.	3/8d.	10/9d.
4/10d.	1/8d.	3/5d.	9/5d.	£1.6.3d.
9/1d.	3/1d.	6/2d.	17/6d.	£2.8.0d.
£12.13.0	84/6d.	160/-	£19.3.4d.	
£12.13.0.	84/6d.	160/-	£19.3.4d.	
£12.13.0.	84/6d.	160/-	£19.3.4d.	
72/-	25/9d.	51/6d.	165/-	£20
65/-	22/-	44/-	114/8d.	£13.10.0.
20/3d.	6/9d.	13/6d.	35/6d.	

Contact your Berk Merchant/Distributors

Please send me literature and prices for the products indicated.

NAME \_\_\_\_\_

POSITION \_\_\_\_\_

ADDRESS \_\_\_\_\_

BGG ✓

Berk AIW Fine Turf Hardener

Berk AIW Outfield Turf Hardener

Berk Standard Weed Killer

Berk Super Weed Killer

Berk Clover Killer

Berk Moss Killer

Berk Liquid Moss Eradicant

Berk Mercurised Turf Sand

20% Chlordane Granular

25% Chlordane Liquid

Berk Turf Fungicide

Berk Top Dressing

**Berk Limited**



Parks and Sportsgrounds Dept.  
Berk House, 8 Baker Street, London W.1. Tel: HUNter 6688

# News



## from the Sections

### SHEFFIELD

Chairman:  
G. HERRINGTON  
(Lindrick)

By H. Gillespie  
63 Langsett Avenue  
Sheffield, 6

#### Annual Tournament

AFTER A BRIGHT AND SUNNY start the weather turned its usual dismal self for our Section Annual Tournament on the 18th July at Lees Hall Golf Club, but the hospitality extended to us by the club Captain, Mr A. R. Evans, and Chairman of Greens, Mr H. F. Yeomans, more than made up for the dampness of the weather. Our thanks are due to Mr G. Vaughan of Ransomes, Mr W. Pender of Stewart's of Edinburgh, and Mr E. Goddard of Fearnco Ltd. who carried out all the computer work on the score cards, etc., and finally produced a winner and section champion in J. WALKER of Wheatley Park, with a final nett of 136, to bring him the best 36-hole nett and best 18-hole nett Cups. This is his third successive competition win this season. Congratulations Johnnie.

Congratulations, also, to D. BARKER, who, playing over his own course, returned a nett 137 to finish second; third on 139, J. BAXBY; and fourth on 140 and winner of the best 36 gross Cup, A. SPENCER. Out of the 27 members who played only 11 failed to take home a prize, so you will see that the list is too lengthy for this column but to the non-prize winners I hope you will not let your disappointment stop you from taking part next year.

Whilst on the subject of prizes, I wish to thank all the trade firms, clubs and individuals who contributed to the prize list, a very

impressive sight to see them all laid out prior to the presentation.

A final thanks to Mr A. R. Evans, the Lees Hall Captain, for very expertly presenting the prizes and for providing the liquid for filling the cups.

#### President

During the day of the tournament I was handed a letter, the contents of which came as a shock to the section, in that it contained the resignation of our President, Mr J. F. Crofts, who, having taken an appointment in the West Country finds he will not be able to carry out his duties as efficiently as he would wish. So after only three months as President we have had to say good luck and best wishes to you in your new appointment, Mr Crofts, and we hope that you and Mrs Crofts will find life in Shrewsbury very much to your liking. We thank you for the support you have given us, both as a Vice-President and then as President, our loss is sure to be another section's gain.

#### Mr Shardlow

Following Mr Crofts' resignation, Mr Shardlow has very kindly offered to take on the Presidency, once again, of the section (what would we do without Mr Shardlow), but he says only until the A.G.M. One cannot thank Mr Shardlow enough for all the support he has given over the years.

#### Match v. Northern Section

The match for the "Slater Trophy" will be played at Otley Golf Club on Thursday, 21st September 1967. Closing date for the acceptance of the invitation to play is 10th September.

#### Mr J. Marshall

I hear that "Jock" met with a motoring accident whilst on holiday and required hospital treatment, Mrs Marshall coming off the worst. Hope you are both feeling better.

#### Raffle

Whilst at Lees Hall you may have bought raffle tickets from the Lady Captain. I am informed that YELLOW ticket No. 154 has not been claimed; if you have it there are a dozen golf balls waiting for you as it is the 1st prize. Contact me if you are the lucky one.

### NORTH-WEST

Chairman:  
F. HALSTEAD  
(Bury Golf Club)

By H. M. Walsh  
Hon. Secretary:  
78 Hadfield Street,  
Oldham, Lancs.

#### Autumn Tournament

AS NOTIFIED IN THE JULY JOURNAL the Autumn Tournament will take place on the Haydock Park Golf Club's course on

Wednesday, 4th October, and will consist of a 27-hole competition, 9 holes in the morning and 18 holes in the afternoon. Visitors' competition will be over 18 holes in the afternoon; this does not prevent them playing a friendly game in the morning. It is essential that all those who intend to take part notify me as early as possible so that I can make catering arrangements, etc. Also please arrive as soon as possible, a nine o'clock start will help to get things moving smoothly.

### Autumn Trip

The annual autumn trip will take place on Wednesday, 25th October, and will be to tour the works of Slazenger's "International Sports Co. Ltd." at Horbury, Wakefield, Yorkshire. As the company have asked that the number of members be limited to 30, it will have to be a case of the first 30 names I receive will be accommodated. A coach will be laid on to make the trip, the picking up point will be either in Manchester or Oldham, but this will be confirmed in the October journal, so please let me have your names as soon as possible.

### Winter Lectures

The first of our series of winter lectures will take place on Tuesday, 17th October, at the Garrick Hotel, Fountain Street, Manchester, at 7.30 p.m. The speaker will be Bill Sowerbutts of the firm of W. E. Sowerbutts & Co. Ltd., Nurserymen, Seedsmen, so please let us make this series as successful as last winter's by having a good attendance.

### Congratulations

On behalf of all members I would like to offer to the following members of the section our sincere congratulations: to E. Macavoy of Hillside Golf Club on completion of 21 years at the club, and on being thanked by his club by being made an honorary member of the club; to L. Partridge of Formby Golf Club on his appointment as head at the Wentworth Golf Club; to E. Brooks of the Ashton-under-Lyne Golf Club who retires on the 30th September after completing 38 years at Ashton and previously at Moortown for 16 years; to R. Janovskis of Grange over Sands Golf Club on his appointment as Head Greenkeeper at Cotswold Hills Golf Club, Cleeve Hill, Cheltenham, congratulations and every success in the future.

### New Members

We welcome to the section the following new members and hope their association with the section is a long and happy one.

T. Herring, Haydock Park Golf Club, Newton-Le-Willows and V. Adhead, Bramhall Park Golf Club, Bramhall, Cheshire.

## MIDLAND

By R. Goodwin

Chairman:  
G. HART  
(Gay Hill)

Hon. Secretary:  
167 Birmingham Road  
Lichfield, Staffs.

### B.G.G.A. President Honoured in Birmingham

AT AN OFFICIAL LUNCHEON, following the inspection of parks, Councillor Silk, the Parks Committee chairman, presented an inscribed putter to Mr Carl Bretherton, who for 36 years has been the city's honorary golf adviser.

Mr Bretherton, who played county golf for Warwickshire as long ago as 1911, has been responsible for advising on the management of the Birmingham municipal courses.

## SOUTHERN

By H. Ford

Chairman:  
J. K. GLASS  
(Thorpe Hall)

Hon. Secretary:  
68 Solcombe Gardens  
Mill Hill, N.W.7

### Lectures

HAVE YOU ANY GREENKEEPING problems? If so bring them along to the Stirling Castle, Moorgate, where we are holding our first winter lecture on Wednesday, 11th October, at 6 p.m. This will be a quiz and could be a very interesting evening, especially for the younger members, providing a lot of questions are asked. So bring plenty along and let our chairman, Jock Glass, sort them out for you. If he cannot answer them himself he will throw them open to the meeting.

Make a note of the date as we are going to make a presentation to Bill Mason for his long and faithful service to the B.G.G.A. The following is an extract from one of the many letters I have received regarding Bill's retirement:—

"Dear Sir,

Thank you for your letter of July 5th, sorry to hear of Bill Mason's retirement but I wish him well and also a happy retirement. Although I have never met Bill Mason in all the years I have been a member of the Association I claim him as a very good friend. I have been in touch with him through the post on a number of things and at all times I have received good advice and satisfaction. I am enclosing . . . for Bill's retirement presentation, it is only a little but will help. . . .

### New Appointments

I have received a letter from Bob Plain to say that one of his lads, R. V. Anderson, at Beaconsfield, who is only 22, has been appointed head greenkeeper at Home Park Golf Club. Congratulations and best wishes from us all.

## New Members

We welcome to the section the following new members:—A. J. Williams of Effingham G.C.; D. G. Cassie of Home Park G.C.; J. A. C. Smith of Henley G.C.; Donald Fraser of Wyke Green G.C.; and Keith Myhill of Swanton Morley.

## Transfer

We welcome Vincent Crabtree from the N.W. Section and hope he will be happy with us.

## A Request

Any reference or correspondence concerning the B.G.G.A. to me please. Thank you.

# NORTHERN

*Chairman:*  
D. ROBERTS  
(West Bowling G.C.)

*By J. Parker*  
*Hon. Secretary:*  
8 Goit Stock Terr., Harden,  
Bingley, Yorks.

## Sheffield Match

MEMBERS ARE REMINDED THAT the closing date for acceptance of the invitation to play in the annual match against the Sheffield Section over the course of the Otley Golf Club on Thursday, 21st September, is Thursday, 14th September.

Replies should be sent to Mr A. Robertshaw, 10 Norwood Terrace, Burley-in-Wharfedale.

## New Members

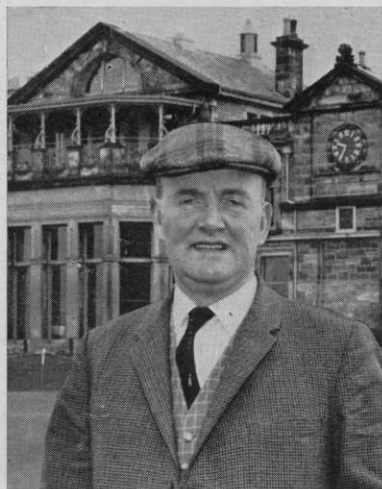
We welcome to the section Mr D. C. Hannan who has joined the staff of Bradford Golf Club under his father.

# SOUTH-WEST

*Chairman:*  
H. SHEPPARD,  
(Warminster G.C.)

*By A. Cockfield*  
*Hon. Secretary:*  
(Shamcastle G.C.)

IN GLORIOUS SUMMER WEATHER the section's Annual Tournament was held at Long Ashton Golf Club on 12th July. With a continual slight breeze to keep temperatures down, a course in excellent condition, first-class catering in the clubhouse, these were all the ingredients for an enjoyable day's golf. Offer these conditions to a golfer of L. Miller's class—our new member and Greenkeeper at the Burnham and Berrow Club and he will accept them with outstretched arms. Playing from 1 handicap his 72 and 74 gross from the medal Tees and his first visit to the course was a very fine achievement. We



## Ask John Campbell how pop-up sprinklers will help keep your greens in championship condition like those on the Old Course at St. Andrews

With some of the largest greens in the world to look after, John Campbell is always ready to take advantage of new developments which help increase day to day work efficiency at St. Andrews. This is why he is so enthusiastic about pop-up sprinklers! Once installed (there's no interference with play) pop-ups water greens at night, automatically, giving a full day's play, every day. Pop-up sprinklers water evenly, regularly promoting greens of the right texture that 'hold' a dropping ball and putt smoothly even in the driest of weather. Pop-ups save time, labour, money — but don't just take our word for it, ask John Campbell, Links Supervisor, for his opinion!

**B.O.I.L.**  
**RAIN SYSTEMS**  
BRITISH OVERHEAD IRRIGATION LTD  
UPPER HALLIFORD-SHEPPERTON-MIDDLESEX-ENGLAND

welcome him to the section and trust his stay will be a long and happy one. In the handicap section the best Senior net prize went to Ivor Scoones of Long Ashton with a 71 and 69. This called for some comments about handicaps but perhaps local knowledge was the deciding factor. In the Junior section, C. Cameron of Knowle had two very good rounds of 67 and 69. This being only his second attempt, to say the least progress is being made. But unfortunately quite a number of our young long-handicap members either failed or lacked the experience to take advantage of hard-running fairways and excellent greens. Or perhaps it was just those "MARTINI" tees which proved disastrous.

Eighteen members in all took part, but regrettably there were one or two notable absentees. The results were as follows: Greenkeepers 1st net—I. Scoones (Long Ashton) 140—Ransomes' Trophy and golf watch. 1st gross—L. Miller (Burnham and Berrow), 146; 2nd net—A. Cockfield (Bath), 145; 3rd net—L. Croad (Enmore Park), 147; 4th net—W. Light (Knowle), 153.

Assistant—C. Cameron Knowle, 136 net—Lady Lester Cup and coffee set.

2nd—R. Parr (Bath), 139 net; 3rd—T. Moore (Bath), 148 net; 4th—R. King (Long Ashton), 151 net.

Veteran's Prize—H. Burge (Long Ashton), 151 net.

We are once again grateful to our President, Mr Ireland, for coming along to present the prizes, also for providing the Veteran's Prize, to Mrs Snell and Mr Payne for always being around when there is work to be done. Their very presence is an enormous relief.

Finally, it is my pleasure to thank Mrs Snell, all local golf clubs and members of the trade who so generously support our prize fund each year. The trade members being Messrs Ransomes, Sims & Jefferies, W. Hargreaves & Co. Ltd., Fisons Ltd., Lunevale Products Ltd., Cannock Agricultural Co. Ltd., F. A. Smith Horticultural Works, S. Veal & Son Ltd., Maxwell Hart Ltd., Rigby Taylor Ltd., Killands (Bristol) Ltd., W. D. & H. O. Wills, British Overhead Irrigation Ltd., Atco Service Branch Chepstow, May & Baker Ltd., and Harwood Romford Ltd.

## WELSH

By **S. A. Tucker**

*H* Sec. and Treasurer:  
36 Close Road,  
Morrilton  
Swansea, Glam.

Chairman:  
**M. GEDDES**  
(Royal Porthcawl)

THERE ARE A FEW MEMBERS WHO have not paid their subscriptions, so please do this right away in order that Mr Geddes can balance his books to date. Please send your subscriptions to: Mr Geddes, 23 Fenton Place, Porthcawl, Glam.—*NOT TO ME.*

Our autumn meeting will be taking place by kind permission of the captains and committee of the Penard Golf Club on Wednesday, 4th October; please make an effort to come early and send me your entry not later than Saturday, 23rd September, so that the steward will have time to arrange the catering, etc.

Our sales of the annual raffle were not up to standard this year, but I would like to thank you all for making the effort to sell what you did. Thank you, boys.

I am very pleased to be able to write these few lines in these notes. It gave me great pleasure in congratulating the Welsh team in the Jubilee Cup when Dia Lord brought the cup home for me to look after; I felt much better right away as I only came out of hospital the day before; I understood they won it by five shots, which made it a convincing win, thanks to Dia Lord, Jack Rees and Henry Fry—well done, boys. I would also like to congratulate Henry Fry in winning the Pattison Shield and wrist watch. I had the pleasure last evening of seeing his trophy and watch. I only wish I had been able to attend, so our section will have to put up a strong team next year to defend it. I am pleased to say we have some very good youngsters coming on and by the time the meeting reaches Wales again, I hope we will have a big entry for that meeting. So again may I say on behalf of the section members, thank you, boys, for the great effort you put into the game.

**everything  
for the Golf  
Course**

Turf cutting machines. Flagstaffs and Flags. Hose reels. Tee Mats. Mud brushes. Drag brushes. Sprinklers. Gang rollers. Harrows. Line Markers. Tools. Machines of all types for everything concerned with Golf courses.

Send for catalogue.

**PATTISSON**

**H. PATTISSON & CO. LTD. STANMORE MIDDLESEX**  
Telephone: 01-954 4171

## ESSEX CAPTAINS' NARROW VICTORY VERSUS GREENKEEPERS

On Wednesday, 12th July, the annual match between the Society of Essex Golf Captains and the Essex Greenkeepers took place at the Romford Golf Club. This very popular event was held in ideal conditions both inside and out; the course was in excellent condition and the cold buffet for lunch and the fry-up for tea satisfied the needs of the inner man. Liquid refreshment was also plentiful, so naturally there was no room for complaints.

The match was 20-a-side and as we could not raise sufficient Greenkeepers an invitation was extended to a few outside the county. The Captains have donated a cup to be held by the winning side for a year; they also provided prizes for a four-ball competition among the Greenkeepers.

The Captains proved too strong for us and won by 391 points to 379, so became the first holders of the trophy. The Greenkeepers' prizes were won by a

mixture of old and young and it gave me great pleasure to see the youngsters among the winners, giving them an incentive to continue.

Mr B. K. Herve, Captain of the Association, said how much pleasure it gave them to entertain the Greenkeepers for the day as it gave them a chance to repay the very excellent work entailed in keeping the courses in such fine condition; he also thanked the Romford Golf Club for allowing us to play, and the outdoor and indoor staff for the first-class service provided.

I replied by thanking the Captain for the wonderful day and also endorsed his remarks regarding the excellent services provided by the golf club staff, and also how much we all looked forward to this meeting. I would also like to thank Mr Robin Galloway, the Romford professional, for allowing the free use of trolleys.

	<i>Pts.</i>	v.		<i>Pts.</i>
F. Howard Bell and V. Williams	45	v.	R. Gould and S. Dennis <sup>1</sup>	43
C. Olley and I. Macauley	39	v.	Hollington and F. Smith <sup>2</sup>	41
C. Henry and C. Diebel	34	v.	. Bennet and . Coyte <sup>3</sup> (19 2nd 9)	40
L. Brooks and G. Layzell	35	v.	P. Moore and P. Staines <sup>4</sup> (18 2nd 9)	40
M. Olley and N. Dosset	41	v.	J. Ness and D. Craig	38
W. Townsend and H. Seymour	44	v.	C. Moore and F. Ford	37
C. Smith and P. Hewing	35	v.	B. Ryan and F. Reed	37
S. Frost and W. Ball	38	v.	E. James and D. Singleton	36
B. K. Herve and W. Jones	37	v.	J. K. Glass and J. Noakes	35
S. Whiting and G. Ticehurst	43	v.	J. Stobbs and E. Foulkes	32
	391			379

- 1st Prizes Two pewter tankards engraved Essex Greenkeepers 1967  
 2nd Prizes Two table lamps  
 3rd Prizes Two cigarette lighters  
 4th Prizes Two bottles of whisky

---

### FOR HIRE

SISIS AUTOTURFMAN Aerator for hire, £25 per week — Do it yourself. J. B. Burnell, 2 Clarence Road, Eaglescliffe, Stockton on Tees.

---



# BRITISH GOLF GREENKEEPERS' ASSOCIATION

## ANNUAL DRAW 1967

### RESULT SHEET

Ibberson, M. A.	13039	Green, J. M.	15375	Will, G.	00040
Smart, D.	13642	Jacklin, A.	16915	DeFoy, C. B.	16093
Webster, D. K.	19159	Sharkey, J.	10033	Melville, D. L.	20778
Dauthieu, J. A.	16105	Lyons, G.	22288	Miller, D.	23481
Connolly, I.	18611	Mackay, C. R.	17229	Lloyd, G.	17911
Dawson, W.	10671	Edmondson, A.	01559	Paton, A. W. M.	08533
Craig, M.	11925	Lynch, J. M.	17182	Pook, G. J.	01798
Thomson, J.	21654	Wilson, J.	03514	Ashdown, K.	10973
Hunt, S. A.	15850	Gilbride, F.	00100	Horton, T.	23987
Beattie, D. T.	23200	Coxon, B. J.	09408	Wilkshire, J. W.	07966
Pinner, T. R.	24323	Pennington, C. G.	02628	Thubron, F. J.	17784
Godfrey, J. A.	23350	Cockin, J.	16128	Mitchell, A.	03295
Walker, R. T.	24132	Thomas, D. C.	21400	Platts, L.	17953
Hume, J. M.	21396	Liddle, R.	23348	Davies, R. J.	24454
Firkins, B.	24294	Kinsella, J.	17273	Morgan, G. B.	22046
Johnson, J. W.	15536	Cogle, E.	02140	McNeill, N. T. J.	08725
Plumbridge, M. M. R.	06576	Christison, C. G.	15346	Tomlinson, G. D.	17930
Coombe, P. J.	23913	Lambert, R. H.	22734	Huggett, G. W.	22825
McGhee, J. A.	15851	McCarthy, G.	10344	Hood, V. B.	11011
Martin, J.	22621	Frew, J.	01526	Hunt, G. L.	23182
Jordan, A.	06452	Longworth, R.	05424	Morris, F.	22607
Lait, D. E.	00732	Grubb, A. G.	00782	Jones, P.	17053
Allott, M. F.	01865	Large, W.	01880	Statham, N.	17992
Stoneman, G.	23136	Green, P. O.	23282	Poole, D. S.	18982
Wills, D.	07938	Hector, W.	22360	Bembridge, M.	00939
Aitken, G. J.	15553	Olde, J.	02358	Barnes, B. W.	21386
McHardy, W.	05583	Henderson, R.	10116	Davies, B. N.	21009
MacDonald, I. D.	19139	Campbell, A.	10017	Gill, P. E.	08526
Coles, N. C.	01419	Wiseman, R.	01557	Butler, D.	11496
MacDonald, J. A.	23119	Garner, J. R.	02811	Weetman, H.	22162
Lester, E. G.	12321	Peach, S.	10686	Waldron, M.	22146
Adwick, K. W. C.	13979	King, R. A.	10804	Clegg, R. A.	22155
Prout, J. R.	12270	John, J.	07957	Colenso, C.	15071
Anderson, R. M.	23369	MacDonald, H.	15145	Meek, R. G.	17881
Cunningham, G.	00727	Paterson, W. R.	02734	Beames, P.	07899
Sutton, N.	15362	Waites, B. J.	10023	Wood, P.	15891
Wilson, S.	09421	Douglas, M. C.	10061	Hudson, J. A.	23019
King, A. G.	02806	Gummer, R. H.	10243	Mackenzie, A.	07713
Snowdon, D.	24224	Paterson, J.	17030	Nash, D.	17266
Goodwin, T. M.	16064	Gunn, M.	23946	Alliss, P.	15865
Roesink, M.	02924	Evans, R. J.	08587	Patterson, B. W.	10767
Faulkner, M.	00096	Harding, C. D.	17624	Notley, M. J.	06286
Moore, A.	21340	Garland, J. G.	08041	Donald, R.	02016
Redford, K.	12888	Norton, C. J.	21446	Thorne, J. C. G.	24217
Talbot, D.	08187	Low, G. W.	24463	Rees, D. J.	23270
Murray, S.	02627	MacDonald, K. A.	10376	Henning, G.	23390
Richardson, I.	02913	Christie, G.	08119	Flatman, H. G.	15268
Dodd, P.	11937	Richards, R.	11493	Larrad, J.	07710
Clark, I.	23747	Small, D.	17020	Boobyer, F. S.	07913
Gregson, M. E.	15233	Blaze, P.	21045	Fisher, T. A.	18693
Thompson, B.	23976	Aram, B. R.	16156	Hoyle, M. T.	15382
Broadbent, P.	16958	Kemp, R. H.	11799	Carter, J.	08294
Muscroft, H. W.	11778	Anderson, J.	15931	Hill, F.	24088
Allen, B. H.	23236	Butler, P. J.	21309	Kinsella, W. J.	15021
Howett, R. L.	06585	Davenport, R. R. W.	08651	Carter, W. H.	21326
Woodman, S.	17302	Game, R.	15384	Little, J. A.	18552
Brocq, T. S. le	15532	Craik, D. C.	17609	Bousfield, K.	07858
Murphy, M.	11692	Roberts, D. L.	17301	Whitehead, E. R.	15039
Emery, R. H.	07601	Ingham, M. B.	09472	Norton, G. C.	01575
Fidler, R. S.	05693	Wilcock, P. H.	21044	Arnott, H.	01524
Slocombe, D.	21378	Jagger, A.	01923	Smithson, M.	02747
Buckner, A. J.	21351	Van Wezel, R.	15206	Wallace, R.	22069
Leeder, M. T.	07720	Anderson, R. B.	24490	Hunt, B. J.	17915
Boyle, H. F.	21399	Lee, P.	24020	Law, V. R.	15972
Birkett, M.	00247	Snell, D.	05788	Brown, R. A.	07825
Ellis, J. H.	04605	Wilson, G. J.	21392	Marsh, P.	16080
Midgley, A. R.	04641	Job, N.	21077	Caygill, G. A.	17907
Sutherland, W.	13284	Squires, T. R.	14992	Brown, E. C.	07712
Tomlinson, W.	03325	Clarke, T. P. B.	08695	Sandry, B. M.	07833
Johnson, D.	15140	Lewis, H.	03252	MacDonald, A. M.	15017
Huggett, B. G. C.	23235	Franklin, B.	15875	West, W. F.	00747
Whitcombe, E. E.	11763	Hughes, M. A.	21042	Roberts, E. P.	04578
Howard, G.	09449	Fowler, J. L.	07794	Thompson, P.	10850
Lewis, D.	15136	Bonthron, D.	11993	Field	15716
Drinkwater, A. M.	22276	Tallack, P.	21080		

# Mrs Greenkeeper's Own Corner

with Ann Mawson

Blackberries are a very useful fruit, coming when most of the other berries are over. The cultivated ones are a luscious fruit, and being very juicy they are excellent for many sweet dishes. Wild blackberries are very good also. All blackberries should be well looked over and washed under gently running water, before they are used.

## Blackberry Fool

$\frac{1}{4}$  pint of cream,  $\frac{1}{2}$  pint of milk,  $\frac{1}{4}$  oz of granulated gelatine, 4 oz of sugar, water,  $\frac{1}{2}$  lb of blackberries,  $\frac{1}{2}$  lb apples.

Peel the apples, core and cut into small pieces, wash the blackberries and put them wet into a stewpan, add a teacupful of water. Cook gently until the apples are quite soft. Then rub through a sieve, add the sugar to the pulp and mix well. Pour it into a saucepan. Dissolve the gelatine in two tablespoonfuls of hot water. Strain it into the pulp. Scald the milk and stir it in gradually. Leave until cold. Whip the cream and fold it in. Serve piled in individual glasses.

To serve four people.

## Baked Blackberry Pudding

$\frac{1}{4}$  lb self-raising flour, 3 oz of castor sugar, 2 oz of margarine, 2 tablespoonfuls of water, 1 large cooking apple, 1 lb of ripe blackberries, cream or custard if liked.

Wash and look over the blackberries. Peel, core and cut up the apples. Put them with the blackberries into a stewpan, with two tablespoonfuls of water, and cook slowly until the fruit is quite soft. Rub through a sieve and put the pulp in a buttered piedish. Beat the fat and sugar to a soft, fluffy cream and add the flour, mixing well so that there is no dry flour left in the basin. Sprinkle this mixture on the warm fruit and bake until the pastry is nicely browned.

Serve cold or hot with whipped cream, or custard.

To serve four people.

## Blackberry Flan

2 oz of butter, 2 tablespoonfuls of castor sugar, a good pinch of grated lemon rind, 1 teaspoonful of lemon juice, 1 dessertspoonful of ground almonds, 1 egg, 2 oz flour, 1 teaspoonful of baking powder,  $\frac{1}{4}$  lb of puff pastry = 2 tablespoonfuls of blackberry jelly.

Beat the butter until it is very creamy, add the sugar and beat again. Stir in the lemon rind and juice, add the ground almonds. Mix well, add the egg by degrees, beating all the time, and then the flour mixed with the baking powder. Line a greased flan tin, with the puff pastry, and put in a good layer of blackberry jelly. Spread the mixture over it, and bake in a hot oven; for 20-30 minutes.

Regulo Mark 8; Electricity 450°F.

To serve four people.

## Blackberry Jelly

3 lb of cooking apples, water to cover, 6 lb of ripe blackberries,  $\frac{3}{4}$  lb of preserving sugar to every pint of juice.

Wipe the apples, but do not peel or core them. Put them in a stewpan. Just cover them with water. Bring to the boiling point, simmer until all the apples are quite soft. Strain off the juice, through a fine sieve; leaving it until it has ceased to drip. Do not press the fruit. Look over the blackberries. Wash them. Put them in a stewpan, cover with cold water, bring to the boil, and simmer until the berries are quite soft, and the water is a very dark red. Drain off the juice through a fine sieve, and when they have ceased to drip, mix the two juices together and measure the quantity. Put the liquid in a preserving pan, and boil quickly for five minutes. Then add the sugar, allowing three-quarters of a pound to every pint of juice. Boil quickly until it sets when tested. It should take about half an hour. Turn into warm dry jars. Tie down and store in a dry cool place.

—Until October . . .

**KEEP OFF  
THE GRASS**

## with that heavy tractor

The BMC Mini Tractor treads lightly on turf, providing traction without ruts. The BMC Mini is low-built and stable on undulating land, it is highly manoeuvrable in confined areas, fully versatile and economical to run. Powered by a BMC diesel engine and available with hydraulics and power take-off, the BMC Mini can be applied to gang mowing, hedge cutting, loading, levelling, grading and a whole variety of P.T.O. tasks. Ask your BMC/Nuffield dealer to arrange a working demonstration with the BMC Mini Tractor. For better maintenance of parks, sports grounds and golf courses—

use the

# BMC MINI LIGHTWEIGHT

H.P.U. Model £585 Standard Model £512. 10.

Petrol-engined models are now available

H.P.U. Model £567. 10. Standard Model £495

Backed by BMC Service—Express, Expert, Everywhere.



**THE BRITISH MOTOR CORPORATION LTD.**

(Agricultural Sales Division) Longbridge, Birmingham.

Overseas Business: BMC Export Sales Ltd., Birmingham and 41-46 Piccadilly, London W.1



# PARKERS

**YOUR PROBLEM IS OUR  
WHOLE BUSINESS AND HERE  
ARE TEN GOOD REASONS WHY**

- 1 Best delivery service with our own transport fleet
- 2 Largest stockholders in the United Kingdom
- 3 Free turf advisory service
- 4 Most experienced team in mechanical treatments
- 5 A Complete service, Grass Seeds to Tractors
- 6 Main distributors for Britain's leading manufacturers
- 7 A friendly company
- 8 Complete after sales service, Mowers, Tractors and Machinery
- 9 24 Hour Telephone answering Service
- 10 Ten lines to meet the immense demand on telephone time

PLEASE CALL AND SEE US AT THE GROUNDSMEN'S EXHIBITION.  
STAND NO. 41, AVE. E.

**T. PARKER & SONS (Turf Management) LTD.**

**WORCESTER PARK - SURREY -**

Tel : DERwent 7791  
01-337 0861 10 lines

