

OCTOBER
1967 1/-

*The
British Golf*

Greenkeeper



ANOTHER WINNER FROM PARKERS

COLLECTS LEAVES AND LITTER

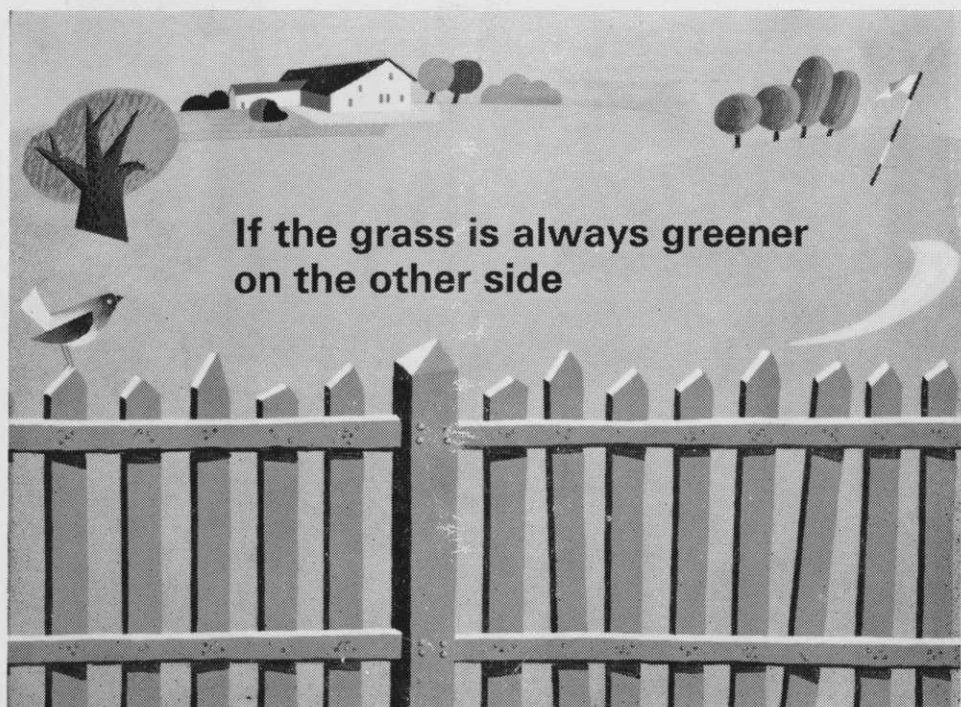
Simply by hitching the Sisis Litamisa to your tractor's three point linkage one man can brush grass or collect grass cuttings, leaves or rubbish from turf or hard surfaces in 6 ft. wide sweeps.

There's all-the-year-round work to be done by the Litamisa and its self emptying 72 cu. ft. capacity hopper can discharge its load directly onto your compost or rubbish heap without the tractor driver leaving his seat. For quick road travel between sites the Litamisa is raised and locked on via the tractor hydraulics.

THE LITAMISA PAYS FOR ITSELF IN ONE SEASON
T. PARKER & SONS (Turf Management) LTD.

Worcester Park · Surrey · Tel: DERwent 7791 · 01-337 0861 · (10 lines)





**If the grass is always greener
on the other side**

**we suggest you start using
M&B Turf Fungicides**

'MERSIL'*

For the prevention and cure of Fusarium Patch and Red Thread ; suppression of Dollar Spot and fusarium "damping off" of grasses ; also controls moss.

'MERFUSAN'*

A finely divided powder for dry application with a range of action similar to that of 'Mersil'.

'TROPOSAN'*

An important addition to the M&B range of turf fungicides. For low cost control of Fusarium Patch and Dollar Spot.

MAY & BAKER LTD Dagenham Essex

Tel: 01-592 3060 Ext: 359

M&B brand products *trade mark

HA3281/100

GREENKEEPER

HON. EDITOR: F. W. HAWTREE



FOUNDED 1912

PUBLISHED MONTHLY FOR THE BENEFIT OF GREENKEEPERS, GREENKEEPING AND THE GAME OF GOLF BY THE BRITISH GOLF GREENKEEPERS ASSOCIATION

President:

CARL BRETHERTON

Vice-Presidents:

SIR WILLIAM CARR

R. B. DAWSON, O.B.E., M.S.C.
F.L.S.

GORDON WRIGHT

F. W. HAWTREE

S. NORGATE

I. G. NICHOLLS

F. V. SOUTHGATE

P. HAZELL

W. KINSEY

Chairman:

C. A. MOORE
19 Vernon Drive
Stanmore, Middlesex

Vice-Chairman:

G. HERRINGTON

Hon. Secretary & Treasurer:

C. H. DIX
Addington Court G.C.
Featherbed Lane
Addington, Croydon, Surrey

Executive Committee:

Carl Bretherton (President)
G. Herrington, C. Campion,
R. Goodwin S. T. McNeice,
J. Parker, J. Simpson,
A. A. Cockfield, H. M. Walsh,
E. W. Folkes, D. G. Lord

Hon. Auditors:

Messrs. SMALLFIELD RAWLINS AND
Co., Candlewick House, 116/126
Cannon Street, London, E.C.4

Hon. Solicitor:

R. A. BECK
21 Lime Street, London, E.C.3

The Association is affiliated to the English and Welsh Golf Unions.

No. 271 New Series

OCTOBER 1967

GROUNDHOG GOLF

One member of a regular foursome had been having a hard time of it all day. On the 16th hole his ball went into a particularly deep sand trap next to the green. Two of the foursome were on the green waiting when the third man approached from the other side.

"Where's John?" he asked.

Just then there was a crunch of sand but no ball flew up out of the trap.

"Shhh!" said another player. "I think he's coming underground!"

—BEN CASSELL.

OCTOBER

CONTENTS

Page 3	TEE SHOTS
5	COURSE PREPARATION SAVES RULES TROUBLE—PART III
9	B.G.G.A. MINUTES OF ANNUAL GENERAL MEETING
10	SITUATION VACANT
11	SPECIAL OCCASIONS
12	NEWS FROM SECTIONS
16	MRS GREENKEEPER

EDITORIAL AND ADVERTISEMENT OFFICES: Addington Court Golf Club, Featherbed Lane, Addington, Croydon, Surrey. Telephone: SANderstead 0281. SUBSCRIPTION RATE: 14/- for 12 issues post paid. Published during the first week of each month. LATEST COPY DATE: 8th of month prior to insertion. All rights reserved. Reproduction of original articles and photographs in whole or in part is prohibited. This Magazine shall not, without the written consent of the publishers first given, be se-sold, lent, hired out, or otherwise disposed of. Contributions and photographs of interest are invited.

TO INSERT A CLASSIFIED ADVERTISEMENT, write to the Advertisement Manager at the above address. The rate is 6d. per word (minimum 15 words). Remittance must be sent with order. Please state number of insertions required and write advertisement in block letters. Advertisements will be inserted in the first available issue.



“If we have that 34” overhauled and some new blades on the gang, perhaps we could get a good price for that old 4-stroke against one of these new riding mowers. What do you think?”



We think you should talk to us about it! The time for ordering overhauls is now—and it is linked with next season’s new machines. Our representatives can talk about it all, expertly and of course without obligation.

READING (Berks)

Boulton Road,
Reading,
Berks.

Telephone:
Reading 84258-9

BIRMINGHAM (Warks)

1210 Stratford Road,
Hall Green,
Birmingham, 28.

Telephone:
Springfield 6256-7

PRESTON (Lancs)

The Grove,
School Lane, Longton,
Nr. Preston, Lancs.

Telephone:
Longton 2451-2

SHEFFIELD (Yorks)

Rotherham Road,
Eckington, Sheffield.

Telephone: Eckington
(Derbyshire) 2373-4

DARLINGTON

(Co. Durham)
McMullen Road,
Darlington.

Telephone:
Darlington 2671, 66939

EXETER (Devon)

Marsh Green Road,
Marsh Barton,
Exeter, Devon.

Telephone:
Exeter 73882, 54017

NEWMARKET

(Suffolk)
176 Exning Road,
Newmarket, Suffolk.

Telephone:
Newmarket 2539, 2632

SCOTLAND

Industrial Estate,
Larkhall, Lanarkshire.

Telephone:
Larkhall 370, 371

REIGATE

(Surrey)
Albert Road North,
Reigate, Surrey.

Telephone:
Reigate 45731-2-3-4-5

CHEPSTOW (Mon)

Castleford, Tutshill,
Chepstow, Mon.

Telephone:
Chepstow 2732, 2114

ATCO SERVICE
EVERYWHERE... UNSURPASSED...

TEE SHOTS



by the Editor

Members will have been grieved to hear of the death of Mr Rod Davies, a vice-president of the Midland Section. Mr Davies was golf writer for the *Birmingham Mail* for many years and often attended Midland Section functions and matches. His cheerful company will be greatly missed.

* * *

The Royal North Devon Golf Club was in trouble last month. The course lies on the northern burrows where the villagers have grazing rights and it was reported at a meeting of the burrowers committee that two areas of turf had been removed by the golf club. One measured 12 ft. by 6 ft., and the other 20 ft. by 6 ft. This must have made two big holes in this 300 to 400 acres.

* * *

It was reported last month that the roof on the new tractor shed on the Jubilee Course at St Andrews was nearing completion and that work would soon start on the move from the Black Sheds to the new building. The sheds are being cleared, though will not be taken away, to make more room for the new

(continued over)



Grass Seeds

FOR HIGHEST PURITY AND GERMINATION

THE CANNOCK AGRICULTURAL CO. LTD., CANNOCK, STAFFS

SEND
NOW
FOR OUR FREE
'GREENKEEPING'
CATALOGUE

British Railways Hotel on the right of the 17th, until after the Alcan Tournament this month.


* * *

Bids for Charterhouse Golf and Country Club were withdrawn at auction last month. This venture in Somerset began with the simple 9-hole course on 40 acres some three years ago, and the club and two cottages were offered with it. Bids reached £20,000 before the lots were withdrawn. Then the country club with public rooms and 12 bedrooms was offered separately but was withdrawn at £10,000; then the golf club was offered alone and that was withdrawn at £9,000. The auctioneers say they are still in the market for anyone interested.

* * *


Ossie Jones, head greenkeeper at the Bramhall Golf Club in Cheshire, and a well-known member of the north of the Association and the North-Western Section, is putting the finishing touches to two new greens he has recently completed. These little touches consist of 15 trees which a new American-built tree mover owned by a Bramhall firm called Clapham Nurseries has lifted from the ground complete with roots and three tons of earth. The first tree moved was a 15 ft tall Scots Pine but the machine can transplant trees up to 40 ft. in height.

PARKERS



For a Complete Service

- * 'Mersil' and 'Merfusan' — the leading turf fungicides
- * 'Supertox' 30, 'Dicotox' Extra and 'Clovotox'—selective weedkillers for a variety of problems
- * New — 'Iotox' — controls speed-wells in turf



SPORTICULTURISTS

Main Distributors

**T. PARKER & SONS
(Turf Management) LTD. For May & Baker
Worcester Park, Surrey Turf Products
Tel: DERwent 7791. 01-337 0861. 10 Lines**

Part III

COURSE PREPARATION SAVES RULES TROUBLES

By **RICHARD S. TUFTS**

Former President and Former Chairman of Rules of Golf Committee,
United States Golf Association

WATER HAZARDS

The subject of water hazards is large and complex. It is proper to consider first the important part played by the architect in their design. Some very difficult situations can be caused by the architect's failure to recognize the application of the Rules to his work.

In the design of any water hazard, consideration must be given to the ingenuity of the golfer and the fact that he can contrive to send his ball into the hazard across any given point in its margin. Therefore, it should be possible for the player to drop a ball where he will have a fair opportunity to play at whatever point required to keep any part of the margin of the hazard between himself and any position on the green where the hole might be located.

If it be impossible to meet this requirement of Rule 33-2, then the lateral water hazard Rule (Rule 33-3) must be used, which requires dropping within two club-lengths of the margin of either side opposite the point of last crossing.

It all seems quite simple, but all too often lack of foresight can make it pretty complicated. Water hazards add much to the beauty of a golf hole and they are often useful in handling drainage problems, but it should always be borne in mind that, unlike a bunker, there is no opportunity for a recovery when a ball is in deep water. Therefore, due discretion must be exercised in their use.

They should never be placed as close to the putting green as bunkers, they should never be used to make excessive demands upon players, especially in the higher handicap range, and when situated along the line of play some extra fairway width should be provided.

Brooks parallel to the line of play present difficult problems when there is "jungle" country or out of bounds on the opposite side, a situation which can introduce an element of doubt as to whether the ball is in the hazard, lost, or out of bounds.

Large bodies of water often require use of the lateral water hazard Rule (Rule 33-3), and when any such water hazard is adjacent to the green the ball must be dropped on the green side and "must come to rest not nearer the hole" than where it last crossed the margin. Obviously, if the water hazard is designed to embrace the green in an arc, there will be times when the ball cannot be dropped in accordance with the Rule without coming to rest nearer the hole. This situation can be handled by establishing a special drop area. But all this artificiality can be avoided if the hazard margin is built in an arc bending away from the green rather than around it.

There are many problems of this nature which can be created when water hazards are constructed without due regard for the Rules. Certainly the alert architect will have a Rule book handy whenever he makes plans for the construction of a water hazard.

However, the alert superintendent can do much to offset the unhappy results of careless planning by the architect. He can, for example, disregard somewhat the natural outlines of a water hazard and designate its margins in a way to provide space to drop within the provisions of the lateral water hazard Rule. This solution can be further improved by avoiding certain cup locations.

Shifting the designated hazard margin can be used to accomplish other objectives. For example, the margins of water hazards in which there are such

obstructions as bridges can be defined either with ample opportunity for the player to drop away from the obstruction in the hazard (as required by Rule 22-2b) or with small prospect that his ball would be in a situation from which he would elect to drop in the hazard.

The advisability has already been mentioned of clearing up areas adjacent to a water hazard in which a ball might be lost, to which solution can be added the possibility of including such small areas within the bounds of the water hazard itself.

One danger which should be foreseen is the possibility that flooding of the water hazard may cause the water to extend beyond the defined hazard margin. If this should occur, the water outside the margin of the hazard will then be casual water (Rule 32) and the player is not penalised when dropping out of it. This may or may not be a desirable development, but at least a decision on what is desired should be made when the hazard margin is defined. Obviously, the Rules governing play in water hazards need to be care-

fully studied by the superintendent as well as the architect.

MAINTENANCE IN MATCH PLAY AND STROKE PLAY

If the superintendent has taken a real interest in the application of the Rules in his daily maintenance, he will be in a position to devote most of his attention to his course when getting ready for a tournament.

For a match play tournament, in which players are competing against each other in the same group, there is no particular reason why standard maintenance procedure should not be followed, subject to any requests made by the committee in charge of the competition.

However, in a stroke play event the entire philosophy of course maintenance is changed by the fact that the first player off is competing against the last player and consequently the playing conditions of the course during the day should be as nearly uniform as it is possible to have them. Bunkers are

GET

YOUR **MOWER**

SERVICED **NOW**

BY SPECIALISTS

MOWER OVERHAULS, REPAIRS AND SPARES ARE OUR ONLY BUSINESS

Ransomes

Authorised service Repair Agents, Sales, Spares and Service.

Main Agents and Distributors to Briggs & Stratton (Engine Manufacturers).

Main agents and distributors for Clinton Engines. Spare parts and service exchange assemblies now available from stock.

Officially Appointed SERVICE DEPOT for

Villiers & JAP



Industrial & Agricultural Engines

HONDA AGENTS

RELF AND KENDALL

406 BRIGHTON ROAD, SOUTH CROYDON, SURREY. CRO 0578
11 STATION ROAD, NEW BARNET, BARNET 8228



Official London Area Distributors to Ransomes, Sims & Jefferies for specialist machines.

Agents for Dennis, Shanks, Greens, Atco, Lloyds and Allen motor scythes.

raked and ball marks and other damage to the greens are repaired in order to maintain the course in as nearly as possible the same condition that it was for the first player. However, any mowing of putting greens or fairways should not be done after a hole has been played by the first group. Even watering should be avoided. As for cutting off a few offending tree limbs, trimming some extra tall rough or even repairing a bad wash found in the woods, can you imagine how happy that would make an early player who had the misfortune to suffer some calamity from being in the situation subsequently corrected?

WORKING WITH THE COMMITTEE

Any competition, whether stroke or match play, is conducted under the supervision of a committee (Definition 9) and the superintendent should keep in close touch with this committee at all times. He should advise it of his plans for all work on the course, obtain a schedule of the starting times and for any possible play-off, should receive the committee's instructions on course condition and advise it of any unexpected changes, and should be available to cut the holes and set out tee markers for each day's play, either with a representative of the committee or in accordance with its instructions.

It will be a happier golfer who plays on a course constructed by an architect and supervised by a superintendent both of whom are Rule conscious in their work. Such a situation will also make the United States Golf Association happier by the contribution it is certain to make to better observance of the Rules of Golf.

Reprinted with grateful acknowledgments to the U.S.G.A. Golf Journal, in which it originally appeared in April this year.

MISCELLANEOUS

PROFESSIONALS AND GREENKEEPERS having stocks of used golf balls contact Sparkbrook Golf Ball Co., 295 Highgate Road, Stoney Lane, Birmingham, with a view to filling export orders.



By Appointment to
Her Majesty The Queen
Seedsman

The production and care of Fine Turf

Carters are specialists in the production and blending of the finest grass seed. Carters Tested Seed, Turf Dressings, Fertilisers and Weed Killers are used by the All England Lawn Tennis Club, Wimbledon and leading Golf Clubs and Sports Grounds throughout the country.

GRASS SEED FOR AUTUMN SOWING

We recommend "Wimbledon All England Mixture" a splendid blend without Ryegrass as used on the courts at Wimbledon.

Prices 1 lb. 8/- 14 lb. 109/- 28 lb. 213/-
56 lb. 403/- 1 cwt. 784/-

AUTUMN-WINTER GRASS DRESSING

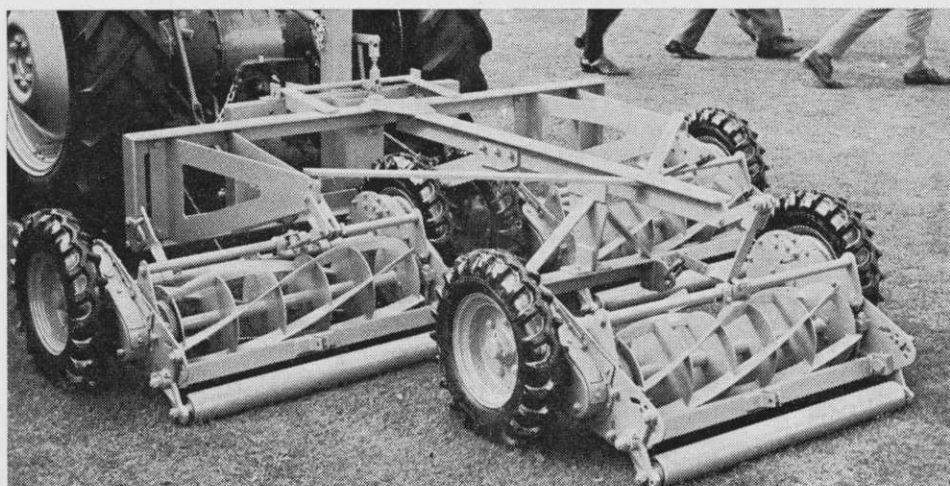
A special dressing almost entirely of organic origin formulated to avoid forced growth. This is absorbed and stored by the grass roots to ensure a vigorous and healthy sward in the spring. Apply 2-4 ozs per square yard according to the condition of the turf.

Prices 1 cwt. 62/- 5 cwt. at 60/- per cwt.
10 cwt. at 58/- per cwt. 1 ton £57

Our autumn list of grass seeds, fertilisers, etc., for golf courses, recreation and sports grounds, will be sent to you free on request. Carters' catalogue of spring-flowering bulbs for autumn planting has just been published and will also be sent to you free on request.

Carters
TESTED SEEDS LTD

**RAYNES PARK
LONDON, S.W.20**



MOTSPUR PARK SHOW

Distributors and groundsmen, including many foreign visitors, showed great interest in the new Hy-Ranger triple gang mower manufactured by Thomas Green & Sons Ltd., of Leeds, a company in the Hawker Siddeley Group.

Thomas Green, who demonstrated their range of mowers, designed the Hy-Ranger with a universal coupling which can be used with almost all makes of tractor and is operated by the hydraulic linkage controlled without dismounting.

The Aberdeen golf range which opened three years ago was closed on the last Saturday in September. The bar and restaurant will carry on but no more golf balls will be struck.

THE BRITISH GOLF GREENKEEPERS' ASSOCIATION

MINUTES OF THE 50th ANNUAL GENERAL MEETING

held at Walton Heath Golf Club, Tadworth, on Monday, 7th August 1967, at 3 p.m.

The Chairman opened the meeting at which 46 members were present, and invited Mr Carl Bretherton to occupy the Chair.

Mr Bretherton asked the meeting to stand in silent tribute to those who had died during the year, as named in the Secretary's Report.

The Minutes of the last Annual General Meeting were read, and on the proposal of Mr Glass, seconded by Mr Ford, were confirmed and signed.

Arising from the Minutes, the Secretary informed the meeting that the first match between the B.G.G.A. and the Secretaries' Association had been fixed for 24th October 1967, at the Royal Mid-Surrey Golf Club, and asked that a team of eight from the Southern Section be selected at this Tournament.

Annual Report

This was read by the Hon. Secretary and its adoption was proposed by Mr Crabtree and seconded by Mr Walsh.

Financial Report

The Hon. Treasurer reported the financial situation to be quite sound, and explained the increase in the Journal expenses was due to an adjustment on previous year's figures which necessitated allowing for 13 months printing to be included. Questions were raised as to the Association investments and the Hon. Treasurer said he would discuss this question with the Auditors to see if these could be improved. The adoption of the accounts was proposed by Mr Ford, seconded by Mr Cashmore.

Executive Committee Report

The Tournament Committee elected were Messrs Cashmore, Moore, McNeice, Herrington, Folkes, three to form a quorum. The Sheffield Section had nominated Mr G. Herrington as vice-chairman for the ensuing year, and the Association had been offered the courtesy of the Seacroft Golf Club at Skegness for the 1968 Tournament, the dates being 12th, 13th and 14th August. Congratulations were extended to Mr Herrington on his appointment, also for the Tournament venue for 1968.

Election of Officers

President:

It was proposed by Mr J. Glass and seconded by Mr G. Wilson that Mr Carl

Bretherton be re-elected as President of the Association. Carried unanimously. Mr Bretherton thanked the members and said he would be very pleased to carry on in office.

Vice-Presidents:

It was proposed by Mr McNeice and seconded by Mr Barton that the Vice-Presidents as listed in the Journal be re-elected. Carried.

Chairman:

It was proposed by Mr Lord and seconded by Mr Folkes that Mr C. A. Moore be elected Chairman. Carried unanimously. The retiring Chairman, Mr Cashmore, thanked the members for their generous support during his year of office, also the Hon. Secretary for his assistance and guidance. He said it had been a year of great enjoyment and one that he would always remember. Mr C. A. Moore took the Chair, and presented a tankard to Mr Cashmore in recognition and appreciation of his services. Mr Moore then thanked the members for his election, and said he was conscious of the honour bestowed upon him and hoped he would be able to carry out his duties to the satisfaction of everybody.

Vice-Chairman:

It was proposed by Mr Barton and seconded by Mr Sumner that Mr G. Herrington be elected Vice-Chairman. Carried unanimously. Mr Herrington expressed his appreciation for the confidence shown by his election.

Hon. Secretary and Treasurer:

It was proposed by Mr Herrington, seconded by Mr Lord that Mr C. H. Dix be re-elected Hon. Secretary and Treasurer. Carried unanimously. Mr Dix thanked the meeting and expressed his willingness to continue in office.

Executive Committee:

It was proposed by Mr Folkes and seconded by Mr Lord that the Executive Committee should be elected as nominated by Sections. Carried.

Hon. Auditors:

It was proposed by Mr Walsh and seconded by Mr Barton that Messrs Smallfield Rawlins & Co. be re-elected Hon. Auditors. Carried.

Hon. Solicitor:

It was proposed by Mr Glass and seconded by Mr Walsh that Mr R. A. Beck be re-elected Hon. Solicitor. Carried.

Subscriptions to the Sports Turf Research Institute

A recommendation from the Executive Committee was put to the meeting that at the request of the Sport Turf Research Institute the annual proportion of members subscriptions allocated to the S.T.R.I. should

be increased from 3/6 to 5/-. The figure of 3/6 had been in operation for a great many years, and it was considered that the request for an increase was quite justified.

To meet this increased payment the Executive Committee proposed that subscriptions should be increased as follows: Class "A" and "D" Head Greenkeepers and Greenkeeper/Professionals £1 12s. 6d., to be allocated 9/- Section Fund, 13/6 Central Fund, 5/- S.T.R.I., 5/- Journal. Class "B" First Assistants £1 2s. 6d., to be allocated 7/6 Section Fund, 5/- Central Fund, 5/- S.T.R.I., 5/- Journal. Class "C" Assistants 16/6, to be allocated 6/6 Section Fund, 5/- S.T.R.I., 5/- Journal. Class "E" Honorary Members remain unchanged. After lengthy discussion it was proposed by Mr Folkes, and seconded by Mr Ford that the recommendations be accepted. A vote was taken and the proposition was carried by 34 for with nil against, and 12 abstentions.

These increased subscriptions would take effect from 1st May 1968.

There being no further business the meeting closed with a vote of thanks to the Chair by Mr Cashmore.

SITUATIONS VACANT

FIRST ASSISTANT GREENKEEPER required. Applicants should be fully experienced and capable of supervising staff in the absence of the Head Greenkeeper. Assistance regarding housing accommodation may be available in the near future.

Applications, stating age, experience etc., and salary required to the Secretary, Hallamshire Golf Club, Sandygate, Sheffield 10, not later than 21st October.

WANTED. ASSISTANT HEAD Greenkeeper at Romily Golf Club, Nr. Stockport, Cheshire. Accommodation to be arranged. Please state experience. Applications to Greens' Chairman, Romily Golf Club, Goosehouse Green, Romily, Cheshire.



**leave it
to the Litamisa**

Link the Litamisa to your tractor and collect litter, leaves and grass cuttings from fairways, semi-rough and access roads in one, clean sweep.

The Litamisa **power sweeps** and collects in one operation; clears a six feet wide path and leaves an immaculate surface behind it. One man can operate the Litamisa and empty the 72 cubic feet capacity hopper **without leaving his tractor seat**. Built for year-round operation, the Litamisa can pay for itself in one season.

The Litamisa can be operated by most tractors with hydraulic linkage and power take-off drive. The whole machine is raised for transport between sites by the tractor. The rotary brush is power driven by the PTO; vital to efficient sweeping.

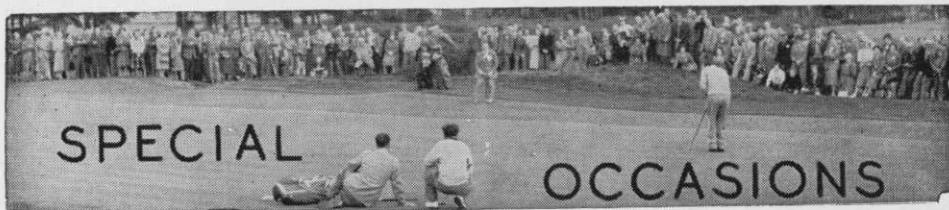
Please write for details or ask us to demonstrate on your course.



"SIS"
PATENT EQUIPMENT

Litamisa trade mark. Patents applied for at home and abroad. Designed and manufactured by

"Sis" Equipment (Macclesfield) Ltd
Macclesfield, Cheshire
telephone: Macclesfield 6363



- OCTOBER**
- 4th Welsh Section Autumn Meeting—Pennard G.C.
 - 4th North-West Section Autumn Meeting—Haydock Park G.C.
 - 11th Southern Section Winter Lecture—Stirling Castle, 6.30 p.m.
 - 17th North-West Section Winter Lecture—Garrick Hotel, Manchester.
 - 25th North-West Section Annual Trip.
 - 26th Northern Section Autumn Tournament—Alwoodley G.C.
 - 26th Sheffield Section Lecture—Brunswick Hotel.
- NOVEMBER**
- 8th Southern Section Lecture—Stirling Castle, 6.30 p.m.
 - 13th North-West Section Lecture—Garrick Hotel.

Get on to **GIBBS**

FOR THE

DAVID BROWN

770 12-Speed Selectamatic



PERFECT FOR 3-9 GANG MOWING

Sparkling colours (orchid white, poppy red and chocolate brown); up-to-the-minute styling; increased power; golf course tyres; PLUS SELECTAMATIC—the revolutionary simplest-ever hydraulic control system.

SWITCH TO THE 36 bhp 770. Years ahead in looks and performance.

GET ON TO GIBBS FOR FURTHER DETAILS AND A DEMONSTRATION.

J. GIBBS LTD · BEDFONT · MIDDLESEX

Telephone: Feltham 5071



By appointment to
Her Majesty Queen Elizabeth II
Suppliers of Agricultural
Machinery and Implements,
and Motor Vehicles

News



from the Sections

SOUTHERN

Chairman:
J. K. GLASS
(Thorpe Hall)

By F. W. Ford
Hon. Secretary:
68 Salcombe Gardens
Mill Hill, N.W.7

Lectures

FOLLOWING THE QUIZ ON 11th October our next meeting will be on 8th November when Mr Shepherd and Mr Wyatt, representing Patissons of Stanmore, will talk on Aeration and Drainage and other machinery for turf maintenance. This will be a topical subject and I am sure an interesting and enlightening evening for us all. This will be held at the Stirling Castle, Moorgate, at 6.30 p.m. prompt. Please note that all lectures commence at 6.30 p.m. on the second Wednesday of each month.

Peter Weston

Now that you have retired I know that

everyone in the Southern Section will join with me in sending our very best wishes for health and happiness in your coming days of leisure.

Transfer from the N.W. Section

Len Partridge from Formby has taken over from Pete Weston at Wentworth. We welcome him and son Peter into our midst and hope that as soon as they have settled in they will come along to our meetings to meet new friends.

EAST MIDLAND

Chairman:
J. BURNHAM

By S. Fretter
Hon. Secretary:
20 Woodcote Road
Kingsway
Narborough Road South
Leicester

Annual General Meeting

THE ANNUAL GENERAL MEETING was held at the Anchor Inn, Hathern, on Wednesday, 16th August 1967; the attendance was average. The chair was taken by Mr L. Cressy. The minutes of the last Annual General Meeting and the accounts for the year ending 30th April 1967 were read and carried unanimously. The secretary reported that up to date we now had 42 members and hoped by the end of the year to increase this to 50. It was carried unanimously that Mr A. J. Cook, 14 Walnut Avenue, Birstall, should be our new president. Mr J. Burnham, of Whetstone Golf Club, was elected chairman and Mr Arnold, vice-chairman. Mr S. T. McNeice was elected chairman and Mr Arnold, vice-chairman. Mr S. T. McNeice was elected section representative. The committee was elected as follows: L. Cressy, D. Bull, D. Whitehead, S. Talbot. The secretary, S. Fretter, and the treasurer, A. Thornton, were both re-elected.

New members and vice-presidents

We welcome to the section the following vice-presidents: Messrs D. G. Hill and K. R. Buckeldee. Also the following new greenkeepers: D. M. O'Shea of Chilwell Golf

continued on p. 14

**everything
for the Golf
Course**

Turf cutting machines. Flagstuffs
and Flags. Hose reels. Tee Mats.
Mud brushes. Drag brushes. Sprinklers.
Gang rollers. Harrows. Line Markers.
Tools. Machines of all types for
everything concerned with Golf courses.

Send for catalogue.

PATTISSON

H. PATTISSON & CO. LTD. STANMORE MIDDLESEX
Telephone: 01-954 4171

NOW IS THE TIME

MOWER REPAIRS

A modern works fully equipped with the latest automatic grinders. A complete range of modern machinery and staffed by experienced craftsmen constantly under the control of a fully competent and diligent works manager, devoting his whole time to the supervision of the mower repair department, enables us to offer a service

SECOND TO NONE

**GOOD
REPAIRS**

**FAIR
PRICES**

**GOOD
SERVICE**

DELAY IS RISKY - BOOK AT ONCE

To avoid disappointment book your repairs NOW. Get your machines collected at once whilst there is still time to enjoy the finest workmanship and ensure that the machines are in your possession for perfect cutting when next season commences.



Authorised Service
and Repair Agents

"SISIS"

Official distributors
Sales and Service

Ransomes

Official London area distributors
for specialist machines

DENNIS & ATCO
Sales and Service



Official Distributors
Sales and Service



**FOR COMPLETE SATISFACTION -
CONSULT THE SPECIALISTS**

T. PARKER & SONS (TURF MANAGEMENT) LTD
WORCESTER PARK, SURREY
TELEPHONE: **DERWENT 7791 (6 LINES)**

PARKER FOR ALL MAKES AND TYPES

SALES



SERVICE



SATISFACTION

Club and D. Bagshaw of Stanton on the Wold Golf Club.

Congratulations

We wish Mr and Mrs J. Burnham and Mr and Mrs G. Arnold every happiness in their married life.

NORTHERN

Chairman:
D. ROBERTS
(West Bowling G.C.)

By J. Parker
Hon. Secretary:
8 Goit Stock Terr., Harden,
Bingley, Yorks.

President's Tournament

THIS TOURNAMENT WAS PLAYED on Sunday, 27th August, over the course of the Filey Golf Club by kind permission of the captain and committee. Twenty-four members competed for the trophy. The winner was R. Smith of Woodhall Hill Golf Club with a net score of 69, won on the last nine holes. The second prize winner was D. Spurden of Otley Golf Club with 69; third was J. Readhead of Bridlington Golf Club with 70. Sealed prize winner was I. Smith of West Bradford Golf Club with 90. All who travelled to Filey had an enjoyable day, favoured by good weather. Our thanks are due to Tommy Hullah for acting as checking steward. We should like to record our thanks to all members of the club staff for their help and courtesy.

Members were welcomed by Mr Franks, chairman of the club greens committee, who also presided at the presentation of the prizes. Finally our thanks to our president, Mr W. Mountain, for his generosity in arranging this outing.

Handicaps

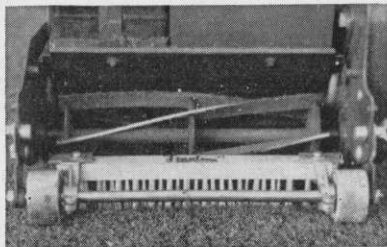
The following changes in handicaps have been made: A. Robertshaw 14 to 13, G. Bennison 13 to 12, D. Spurden 22 to 18, C. Geddes 24 to 22, W. Wilkinson 18 to 17, R. Smith 24 to 21, and C. Ramsden 22 to 20.

Autumn Tournament

Members are reminded that the closing date for acceptance of entries for the Autumn Tournament to be played over the course of the Alwoodley Golf Club on Thursday, 26th October, is Thursday, 19th October. This is absolutely necessary so that the draw and necessary catering arrangements can be made.



EDINBURGH



**STEWART'S FINALAWN BRUSHES
FROM 47/6**

**STEWART & CO.,
SEEDSMEN LTD.
EDINBURGH, 2**

NORTH-WEST

By H. M. Walsh

Chairman:
F. HALSTEAD
(Bury Golf Club)

Hon. Secretary:
78 Hadfield Street,
Oldham, Lancs.

Annual Trip

AS STATED IN THE SEPTEMBER journal the picking up point for the trip to Horbury will be the Wenneth Golf Club, Green Lane, Garden Suburbs, Oldham. The coach will leave at 8 a.m. the Captain and Council of Wenneth have kindly given us permission to use the club's car park for members' cars.

Lectures

The November talk will be given by Mr L. Hewitt of the Longton Service Branch

FOR HIRE

SISIS AUTOTURFMAN Aerator for hire, £25 per week — Do it yourself. J.'B. Burnell, 2 Clarence Road, Eaglescliffe, Stockton on Tees.

of Atco's and will take the form of instructional talk and quiz combined and will take place on Monday, 13th November at 7.30 p.m., the venue as before, The Garrick Hotel, Fountain Street, Manchester. Please let us have a good attendance. The complete list of talks for the remaining months will be given in the November issue of the journal.

WELSH

Chairman:
M. GEDDES
(Royal Porthcawl)

By S. A. Tucker
H/Sec. and Treasurer:
36 Clase Road,
Morriston
Swansea, Glam.

I AM VERY SORRY TO REPORT that I have the passing of two of our members in the death of J. D. Kenealy of Whitchurch Golf Club, Cardiff; also the death of G. E. Brennan of Morlais Castle Golf Club, Merthyr Tydfil. On behalf of the members of the section I offer our sincere and deepest sympathy to both the families. They were two very likeable fellows and we will miss them in our meetings.

SHEFFIELD

Chairman:
G. HERRINGTON
(Lindrick)

By H. Gillespie
63 Langsett Avenue
Sheffield, 6

Mr G. Herrington

WHILST VISITING THE ASSOCIATION Annual Tournament at Walton Heath our Chairman, Mr G. Herrington, was taken ill and subsequently had to undergo an operation in a Kent Hospital. I am pleased to report that he is making satisfactory progress and should soon be in active service again.

All Section members and friends wish you a speedy and complete recovery, George.

Lectures

The winter lectures will again be held at the Brunswick Hotel, Haymarket, on the last Thursday in each month. The first lecture on 26th October at 7.30 p.m. but the subject has not yet been finalised.

New Member

We welcome to the Section the following new member: R. Cheetham of Stockbridge and District Golf Club. We hope to see you at our meetings.

NORTH-EAST

J. SIMPSON
(Ponteland G.C.)

By D. Earsman
Arcot Hall Cottage
Dudley
Newcastle on Tyne 3

Sweep Tickets

I CONGRATULATE ALL THOSE members who sold tickets for the sweep. The amount collected was £54 17s. 6d. and although it was not as good as last year you made a good effort and on behalf of the Committee I thank you. I also wish to thank our Vice-Chairman, Mr R. H. Nicholson, for dealing with the Sweep tickets, and to Mrs Nicholson who does a lot of work behind the scenes for the Section in this Sweep.

Welcome

We welcome to the Section the following new members: Vice-President J Bland-Short and John Nixon.

RYAN TURF CUTTER for hire, with or without operator. G. Bunting, 14 Finham Green Road, Coventry, COV 68653.

R. C. CRAIG

AND CO. LTD.

SPECIALISTS IN THE REPAIR AND
MAINTENANCE OF ALL TYPES OF MOWERS

★ Agents for: RANSOMES SIMS &
JEFFERIES Ltd.

★ LLOYDS & Co. Ltd.
WEBBS LAWN MOWERS

★ Distributors: DENNIS BROS Ltd.

★ GANG MOWERS FOR HIRE

We will gladly call on you to advise on your grass cutting equipment or arrange demonstrations. Ring us now.

★

**153 Arch Stamford Brook
Station, LONDON, W.6.**

RIVERSIDE 5415

Mrs Greenkeeper's Own Corner

with Ann Mawson

There should be plenty of beetroot in the shops now or you might grow your own; when buying them remember the deeper they are in colour the better the flavour. Handle them very carefully for if the skin is broken and the red juice escapes, the beetroots will be pale and flavourless.

Beetroot Tops

These are very nourishing. You want very young beetroot and cook them like turnip tops. About $1\frac{1}{2}$ lb of beetroot tops, salt, 1 oz of butter, pepper.

Cut off any hard pieces of stalk, then wash them in cold water and while still quite wet put them into a saucepan, add a little salt; cover and cook gently until tender. Drain very well (you can save the liquid and drink it, as a good tonic). Put the leaves into a clean saucepan with the 1 oz of butter, melted with the pepper and stir until the butter is well mixed with the leaves and very hot. Serve at once.

Beetroot Soup

Two tablespoonfuls of cream, 1 tablespoonful of flour, $\frac{1}{2}$ pint of milk, $1\frac{1}{2}$ pints of seasoned white stock (vegetable), 1 oz of butter, 1 large beetroot, 1 small head of celery, 1 medium-sized onion.

Boil the beetroots. Cool and peel them. Wash the celery and peel the onion. Cut all the vegetables into very small pieces. Melt the butter in a saucepan, add the vegetables and cook gently for five minutes. Add the stock, stir

well, then simmer slowly until the vegetables are pulpy and soft. Now rub them through a sieve. Return the soup to the saucepan. Mix the milk with the flour, add it gradually to the soup; keep it very smooth. Stir until it has boiled for nine minutes. Add the cream just before serving.

Beetroot Salad

A few drops of vinegar, a few drops of lemon juice, pepper, salt, 1 small lettuce, 1 teaspoonful of finely chopped chives, 2 tablespoonfuls of cream, 1 dessertspoonful of oil and vinegar dressing, 1 breakfastcupful of cooked green peas, 1 small cucumber, 4 good-sized beetroot.

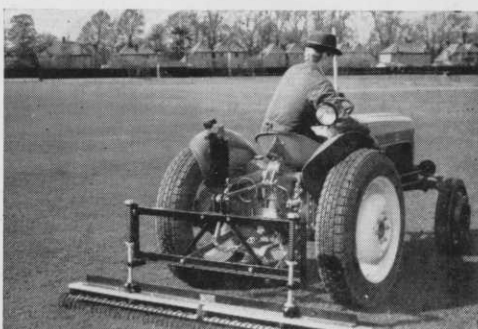
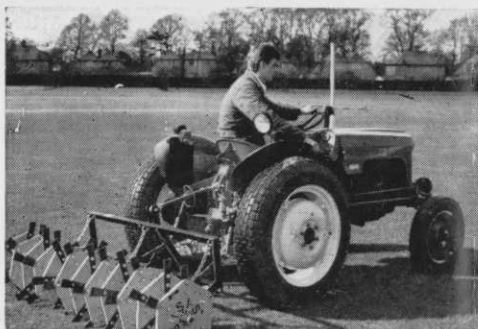
Boil the beetroot until tender, and remove the skins. Cut off the tops and scoop out the centres carefully leaving just a wall of beetroot. Cut them flat at the bottom so they will sit firm. Peel the cucumber, cut half of it into slices. Chop the other half finely, mix in the cooked peas and a little oil and vinegar dressing and fill the beetroots with this mixture. Peel the cream dressing on top, sprinkle with very finely chopped chives, serve on a bed of lettuce and cucumber.

To Make the Cream Dressing

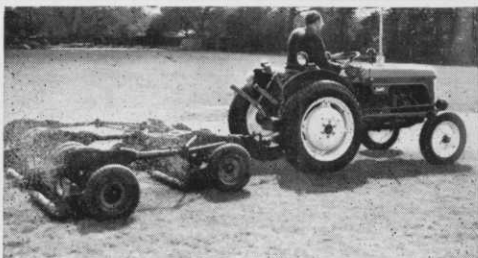
Mix a pinch of salt and pepper with the cream, whip until thick. Add the lemon juice and vinegar.

This salad is delicious and will accompany any cold dish.

—Until November . . .



**a lightweight
tractor, versatile
yet inexpensive**



BMC MINI TRACTOR

Scaled down in every way except in the capacity to handle hard work the BMC Mini Tractor is exceptionally versatile. Its light weight is a particular advantage in every phase of turf cultivation. Powered by a BMC 4-cylinder diesel engine and available with hydraulics and power take-off the BMC Mini can be applied also to loading levelling, grading, and a variety of work requiring mechanical, hydraulic or pneumatic power. Ask your BMC/Nuffield dealer to arrange a working demonstration with the BMC Mini Tractor.

H.P.U. Model £585. Standard Model £512 . 10 . 0.

Petrol-engined models are now available
H.P.U. Model £567. 10. Standard Model £495

THE **BRITISH** MOTOR CORPORATION LIMITED
(Agricultural Sales Division), LONGBRIDGE, BIRMINGHAM.
Overseas Business: BMC Export Sales Ltd.,
Birmingham and 41-46 Piccadilly, London W.1

Backed by BMC Service



Express, Expert, Everywhere

Ten hardened steel knives revolving at high speed give 106 cuts per yard. A thin bottom blade gives the closest possible cut. These features, plus very fine adjustments, produce a superb finish faster.



*Ask your Ransomes Area Sales and Service
Distributor for a demonstration or write to:—*

RANSOMES



RANSOMES SIMS & JEFFERIES LTD • IPSWICH
Telephone: IPSWICH 72222 • Telex No. 98174

**10-knife high-speed cutting cylinder
and thin bottom blade
give the Ransomes 18" Auto-Certes
unequalled performance.
Reliable 4-stroke engine
saves time and temper**