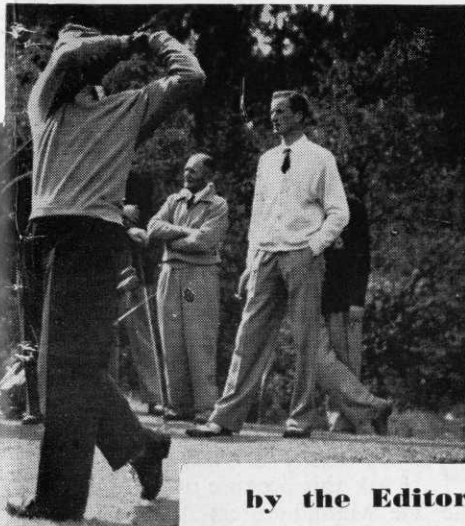


TEE SHOTS



by the Editor

New courses continue to attract the attention of the Irish Tourist Board. Schemes on the West Coast and near Dublin are in the planning stages. The site on the West Coast has all the makings of a tourist attraction with sea and mountain views and championship length.

* * *

The East Kilbride Golf Club, which recently had its application to remain on its present site turned down, is now actively engaged in purchasing a new one. There is even talk of a municipal course in this growing New Town and the Burgh Council consider that there will be demand for three eighteens when the 100,000 population is reached.

* * *

The Marston Green municipal course in Birmingham, which has been suffering for some time from work on the Elmdon Airport extension, can now look forward to a new site on which work seems likely to start this spring. The new course is on the opposite side of the Airport and will be rather more accessible.

* * *

The Lullingstone Park Golf Course is now rapidly taking shape under its Head Greenkeeper, Paul French. He is looking forward to opening in the early summer and with the second nine holes under construction at the same time, will have his hands full for the next year or so.