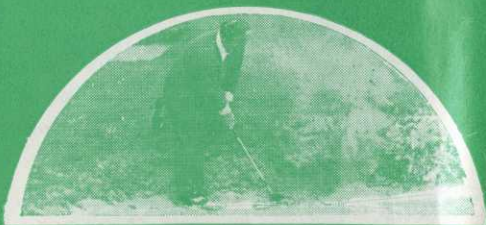


APRIL

1966 1/-

The British Golf

Greenkeeper



**Parkers
get down
to grass
roots**

*Perfecto Golf Equipment
Mowride for Golf Green,
Netting in association with
Proctor Nets Ltd.*

AND ALL PROBLEMS INCLUDING ARTIFICIAL SURFACES

The Parker service to grass is the most comprehensive of its kind. No less than 44 varieties of grass seed. Fertilisers loams weed and worm killers to maintain the turf in first rate condition. The finest stock of equipment in the country from rakes to leaf sweepers mowers to sprayers Ground accessories for every sport. An advisory panel which thrives on complex problems. But we are just scratching the surface. Do write for our 88 page brochure it tells you everything about us.



T. PARKER & SONS (TURF MANAGEMENT) LTD
WORCESTER PARK, SURREY

BUYERS' GUIDE

BUNKER DRESSER

SMALLHOLDERS UTILITIES SUPPLY CO., 183
Hammersmith Road, London, W.6.

CLINKER, ETC.

T PARKER & SONS, Worcester Park, Surrey.

CONTRACTORS

GILLIAM & CO. Ltd., Purley, Surrey.
MAXWELL M. HART, Ltd., Winnersh, Wokingham,
Berkshire.
J. R. STUTT Ltd., Canford Cliffs, Bournemouth.

EQUIPMENT SERVICING

R. C. CRAIG, Ltd., 30 Aylmer Rd., London, W.12.
GROSVENOR ENGINEERING CO., Manningham,
Bradford, Yorks.
RELF & KENDALL, 406 Brighton Rd., S. Croydon,
Surrey.
T PARKER & SONS, Worcester Park, Surrey.

FERTILISERS

CANNOCK AGRICULTURAL CO., Ltd., Cannock,
Staffs.
CARTERS' TESTED SEEDS, Ltd., Raynes Park,
London, S.W.20.
FISONS, Ltd., Harvest House, Felixstowe, Suffolk.
MAXWELL M. HART, Ltd., Winnersh, Wokingham,
Berkshire.
T PARKER & SONS, Worcester Park, Surrey.
STEWART & CO., Seedsmen Ltd., Edinburgh, 2.
SUTTON & SONS, Ltd., Reading.

FUNGUS CONTROL

CANNOCK AGRICULTURAL CO., Ltd., Cannock,
Staffs.
CARTERS' TESTED SEEDS, Ltd., Raynes Park,
London, S.W.20.
MAY & BAKER, Ltd., Dagenham, Essex.
T. PARKER & SONS, Worcester Park, Surrey.
SUTTON & SONS, Ltd., Reading.

GOLF TEE MATS

UNIVERSAL MAT CO., Ltd., Tileyard Road,
London, N.7

GRASS SEEDS

CANNOCK AGRICULTURAL CO., Ltd., Cannock,
Staffs.
CARTERS' TESTED SEEDS, Ltd., Raynes Park,
London, S.W.20.
MAXWELL M. HART Ltd., Winnersh, Wokingham,
Berkshire.
T PARKER & SONS, Worcester Park, Surrey.
STEWART & CO., Seedsmen Ltd., Edinburgh, 2.
SUTTON & SONS, Ltd., Reading.

GREENKEEPERS' TOOLS & COURSE EQUIPMENT

R. C. CRAIG, Ltd., 30 Aylmer Road, London, W.12.
W HARGREAVES & CO., Ltd., "Sisis" Patent
Equipment, Macclesfield, Cheshire.
H. PATTISSON & CO., Ltd., Stanmore, Middlesex.
T PARKER & SONS, Worcester Park, Surrey.
STEWART & CO., Seedsmen Ltd., Edinburgh, 2.

INSECTICIDES

CANNOCK AGRICULTURAL CO., Ltd., Cannock,
Staffs.
T PARKER & SONS, Worcester Park, Surrey.

LEAD ARSENATE

F. KEEP, Ltd., 82-84 North End, Croydon, Surrey.
T PARKER & SONS, Worcester Park, Surrey.

ENQUIRY BUREAU.—The Editor desires to point out that he will be pleased to answer enquiries from our readers, and forward to them the name and address of the manufacturer or supplier of any particular proprietary article or product used in the construction, maintenance and upkeep of a golf course. Enquiries are coming in from greenkeepers asking for such information. They may, for example, know the trade name of the article or product they wish to purchase, but may not be conversant with the name and address of the actual manufacturer or supplier. The Enquiry Bureau will gladly supply this information, and thus enable the greenkeeper to contact the manufacturer or supplier direct.

TO MANUFACTURERS.—In order that our information may be kept constantly up to date, manufacturers or suppliers are requested to forward their latest trade lists, catalogues, and any other confidential information regarding their products. By so doing the Bureau will be able to function to the mutual benefit of all concerned.

TRADE REVIEWS.—The Editor will be pleased to arrange to devote space in our editorial columns to a review of our advertisers' products, etc. Will advertisers please forward details for this purpose.

LOAMS & MANURES

T PARKER & SONS, Worcester Park, Surrey.

MOWER ENGINEERS

RELF & KENDALL, 406 Brighton Road, S. Croydon,
Surrey.
T PARKER & SONS, Worcester Park, Surrey.

MOWERS

BRADLEY'S, Leeds Rd., West Ardley, nr. Wakefield,
Yorks.
T. GREEN & SON, Ltd., Smithfield Ironworks,
Leeds, 2.
GROSVENOR ENGINEERING CO., Manningham,
Bradford.
LLOYDS & CO., Ltd., Pennsylvania Works, Letch-
worth, Herts.
T PARKER & SONS, Worcester Park, Surrey.
H. PATTISSON & CO., Ltd., Stanmore, Middlesex.
C. H. PUGH, Ltd., P.O. Box 256, Acto Works,
Birmingham, 9.
RANSOMES, SIMS & JEFFERIES, Ltd., Orwell
Works, Ipswich, Suffolk.
HAYTERS (SALES) Ltd., 34 Spellbrook Lane, Bishop's
Stortford, Herts.
E. THOMAS & CO. (Oswestry) Ltd., (Dept. S.6)
Whittington Rd., Oswestry, Shropshire.

SEA SAND

T PARKER & SONS, Worcester Park, Surrey.

SPRAY EQUIPMENT

T PARKER & SONS, Worcester Park, Surrey.
PRESSURE JET MARKERS Ltd., 152 The Arches,
Stamford Brook, London, W.6.
B.O.L.L. RAIN SYSTEMS, Upper Halliford, Shepp-
ton, Middlesex.
F. W. BERK & CO., Ltd., Berk House, 8 Baker Street,
London, W.1

TRACTORS

T GREEN & SON, Ltd., Smithfield Ironworks,
Leeds, 2.
W HARGREAVES & CO., Ltd., "Sisis" Patent
Equipment, Macclesfield, Cheshire.
T PARKER & SONS, Worcester Park, Surrey.
H. PATTISSON & CO., Ltd., Stanmore, Middlesex.

TURF AERATING APPLIANCES

W HARGREAVES & CO., Ltd., "Sisis" Patent
Equipment, Macclesfield, Cheshire.
T. PARKER & SONS, Worcester Park, Surrey.
H. PATTISSON & CO., Ltd., Stanmore, Middlesex.

WEED CONTROL

MAXWELL M. HART Ltd., Winnersh, Wokingham,
Berkshire.
MAY & BAKER, Ltd., Dagenham, Essex.
T PARKER & SONS, Worcester Park, Surrey.

WEED CONTROL SPRAYING

T PARKER & SONS, Worcester Park, Surrey.

WORM KILLER

CARTERS' TESTED SEEDS, Ltd., Raynes Park,
London, S.W.20.
MAXWELL M. HART Ltd., Winnersh, Wokingham,
Berkshire.
T PARKER & SONS, Worcester Park, Surrey.
SUTTON & SONS, Ltd., Reading.

THE BRITISH GOLF

GREENKEEPER

HON. EDITOR : F. W HAWTREE



FOUNDED 1912

PUBLISHED MONTHLY FOR THE BENEFIT OF GREENKEEPERS, GREENKEEPING AND THE GAME OF GOLF BY THE BRITISH GOLF GREENKEEPERS ASSOCIATION

President:

CARL BRETHERTON

Vice-Presidents:

SIR WILLIAM CARR
R. B. DAWSON, O.B.E. M.S.C.
F.L.S.
GORDON WRIGHT
F W HAWTREE
S. NORGATE
I. G. NICHOLLS
F V SOUTHGATE
P HAZELL
W KINSEY
R. C. AINSLOW

Chairman:

J SIMPSON
Ponteland G.C.
98 Hedley Street
Gosforth, Newcastle on Tyne, 3

Vice-Chairman:

F CASHMORE

Hon. Secretary & Treasurer:

C. H. DIX
Addington Court G.C.
Featherbed Lane
Addington, Croydon, Surrey

Executive Committee:

Carl Bretherton (President),
G. Herrington, J G. Bryan
E. H. Benbow S. T McNeice,
J Parker J Simpson,
A. A. Cockfield, H. M. Walsh,
E. W. Folkes, D. G Lord

Hon. Auditors:

Messrs. SMALLFIELD RAWLINS AND
Co., Candlewick House, 116/126
Cannon Street, London, E.C.4

Hon. Solicitor:

R. A. BECK
21 Lime Street, London, E.C.3

The Association is affiliated to the English and Welsh Golf Unions.

No. 253 New Series

APRIL 1966

Ad for a golf driving range "Golf Instruction. Slide and Swings for Children. Come out and hit a few"

—JOSEPH E. BROOKS.

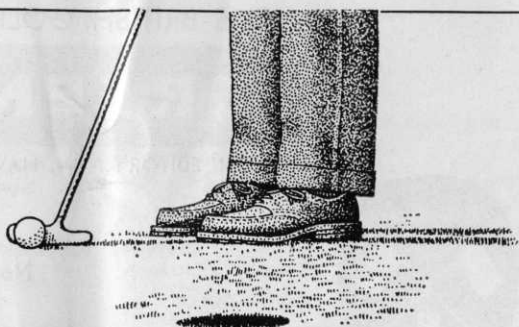
APRIL

CONTENTS

Page 3	TEE SHOTS
4	PROVISION AND APPLICATION OF WATER TO THE GOLF COURSE
8	SITUATIONS VACANT
14	SPECIAL OCCASIONS
15	SECTION NOTES
20	MRS GREENKEEPER

EDITORIAL AND ADVERTISEMENT OFFICES: Addington Court Golf Club, Featherbed Lane, Addington, Croydon, Surrey Telephone: SANderstead 0281. SUBSCRIPTION RATE: 14/ for 12 issues post paid. Published during the first week of each month. LATEST COPY DATE: 8th of month prior to insertion. All rights reserved. Reproduction of original articles and photographs in whole or in part is prohibited. This Magazine shall not, without the written consent of the Publishers first given, be re-sold, lent, hired out, or otherwise disposed of. Contributions and photographs of interest are invited.

TO INSERT A CLASSIFIED ADVERTISEMENT, write to the Advertisement Manager at the above address. The rate is 6d. per word (minimum 15 words). Box Number, 1/6 extra. Remittance must be sent with order. Please state number of insertions required and write advertisement in block letters. Advertisements will be inserted in the first available issue.



Birdie

We cannot guarantee your form, but when it comes to the condition of the course, May & Baker Ltd have the answer in their range of selective weedkillers and fungicides. No matter what the sport, May & Baker brand products will improve conditions, by giving you perfect turf.

-
- 'MOSTOX'*** A really effective moss killer.
-
- 'CLOVOTOX'*** Selective weedkiller for controlling clovers.
-
- 'DICOTOX'*** Showerproof selective weedkiller for general weed control in turf.
-
- 'DICOTOX' EXTRA*** Four times as concentrated as 'Dicotox'*, for greater economy on larger areas of sports turf.
-
- 'SUPERTOX' 30*** Broad spectrum selective weedkiller for turf. Kills weeds and clovers.
-
- 'MERSIL'*** Concentrated turf fungicide with rapid and lasting activity. Recommended for moss control.
-
- 'MERFUSAN'*** Turf fungicide with similar range of action to that of 'Mersil'*. For dry application.
-
- DDT CONCENTRATE** For the control of turf pests including leather-jackets.
-

In order that you may obtain these products quickly we have established a network of distributors, all of whom have been carefully selected for their sales service and knowledge of your special requirements.

In addition the M&B representatives will be supporting them in the field and available to help with your particular problems.

For details of this new network, and an up to date list of products and prices, post this coupon to:
May and Baker, Dagenham, Essex.

Please send me details of May and Baker Main Distributors, and a list of products and prices.

Name _____

Address _____

*trade mark

M&B brand Products.

MAY & BAKER LTD
Dagenham Essex

Minion 3060
12 and 359.

HA3042

TEE SHOTS



by the Editor

Perhaps I dreamed it. At any rate, it was 1st April before noon when the letter plopped on to my mat. It came from a body which called itself the IRTS. I gathered this had something to do with research into turf science and that one of their representatives had called to look at my lawn while I was away and wanted to send me his sympathy

“The trouble is,” he said, “it is too big. But fortunately modern techniques can ease your task more than you might wot of.”

I was puzzled by this “wot of” In the first place, I was taught never to end my sentences with a preposition and in the second place — “wot” — well, I ask you. But I read on.

He thought a good deal of my daisies which, he said, if not cut too short, would give the grass an agreeable mediaeval appearance. (I now began to see the point of his “wot”.) I was at all costs to avoid any preparations containing the Sulphates of Ammonia or Iron which tended to blacken and destroy the pretty plants.

He also took a good view of my moss. “While,” he said, “there may be certain mercurised products designed to discourage the elegant fern-like fronds of *Polytrichum*, there can be no doubt that the basic conditions of poverty, bad drainage, compaction and, what have you (it seemed to me I had the lot already),

Continued on pages 10 and 11

CANNOCK FUSARIUM SPECIFIC
THE CANNOCK AGRICULTURAL CO. LTD., CANNOCK, STAFFS
Send for free illustrated Brochure

PROVISION AND APPLICATION OF WATER TO THE GOLF COURSE

By

E. M. BAYLIS, N.D.A.

Advisory Officer, The Sports Turf Research Institute

AFTER such a long wet winter any remarks about watering may appear totally inapt but it often happens that very hard or wet winters are followed by particularly dry summers. From the point of view of maintenance it is generally recognised that a club having a good watering system available is in a stronger position than a course where no artificial watering is possible.

Efficient irrigation provides more uniform playing conditions throughout the summer and also allows the Greenkeeper to follow a much more intensive and flexible maintenance programme. To date far too few courses possess a really first-class watering system, although a number of clubs are making efforts either to lay on water or to bring an existing system up to date and improve its efficiency. Where this is being done many points have to be borne in mind, including the following

Where streams, lakes or wells exist on the course these should be considered first of all as sources of supply but it is essential to establish whether they will provide sufficient water to meet peak needs in a prolonged dry period. Sinking special bore holes can often be justified although this work will raise the cost of the installation. Occasionally streams become polluted with substances injurious to turf and if there are any doubts about this point it is worthwhile having samples analysed before using the water on greens. Most private water supplies contain a great deal of suspended matter and provision must be made for filtering otherwise sprinkler jets can become blocked or badly worn.

There is often no alternative to using the mains supply but this has its disadvantages. Firstly, mains water is expensive. Charges are usually upwards of 2s. 6d. per 1,000 gallons. Also, restrictions are frequently imposed during dry weather just when the system

will be needed most to keep the turf healthy. In a few cases mains water is delivered at sufficient pressure to allow direct application, thereby avoiding the cost of a power unit and pump. However, it is possible for some form of booster pump to be required.

Choosing the correct type and size of underground mains requires careful calculation in order to allow for losses in pressure due to friction and heat. In addition metal pipes tend to corrode over the years, reducing their effective bore. A pump unit of the correct capacity must also be chosen. These factors must all be taken into account to ensure that sufficient flow and pressure are available at the distribution points to operate several sprinklers at one time. The only way to make absolutely sure the system will be sound is to consult a firm of experienced water engineers before work is put in hand.

Methods of applying water can vary a great deal and include fully automatic systems using pop-up sprinklers which are permanently left in position, require no movement and consequently cut down the running and labour costs. Systems of this type can be set to operate completely automatically under electric control, if required. Their main disadvantage appears to be the relatively high initial cost.

Conventional sprinklers are more widely used and those operating on the rotary principle are usually found quite effective, being light to transport and cheap to purchase. The majority of sprinklers require a water pressure of at least 25 lb. per square inch to operate effectively although some will perform satisfactorily at much lower pressures.

Where water pressure is particularly poor a few clubs still hand-water using open hoses but this practice is now accepted as being very inefficient in labour utilisation and seldom achieves good results.

By Appointment to Her Majesty the Queen
Charles H. Pugh Ltd. Motor Mower Manufacturers



ATCO

FOR THE GOLF COURSE
... and for Life

ATCO GANG MOWERS FOR THE FAIRWAYS

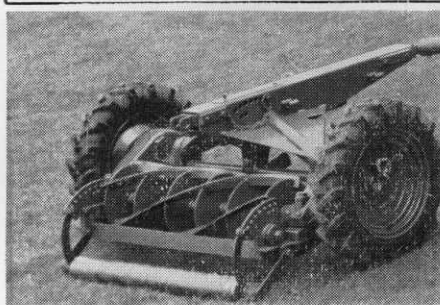
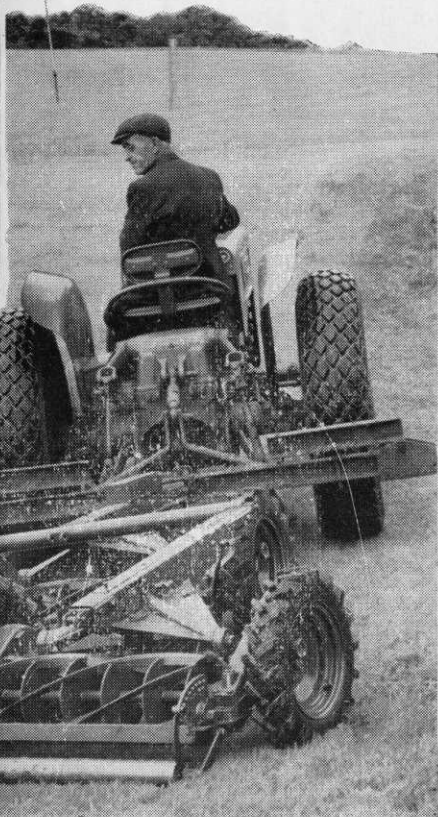
There are three models available. The popular general-purpose model No. 1, the heavy-duty No. 2, and now

The NEW MODEL No. 3 with these star features:

- ★ Special two-section gearbox makes cutter changing a moment's job no stripping!
- ★ 10" Heavy-duty cutter unit of advanced design for outstanding cutting and clearing efficiency.
- ★ Even less time needed for maintenance—For example: oil bath changes, ONCE A YEAR only!—making more time for mowing!
- ★ Full width rear roller for fine turf mowing—Easily attached and detached to suit varying conditions.

Atco Gang Mowers are only some of the many machines in the Atco complete range, from the 12" to the 34" roller type, as well as rotary grass cutters and side-wheel mowers.

PRICES FOR TRIPLES RANGE FROM £289.



The 20" SPECIAL

FOR 'SUPERFINE' MOWING OF GREENS

This 'self-contained' motor mower has become recognised as the best machine of all for the maintenance of the perfect finish required for the Greens. The specification is complete and will maintain peak performance for life.

for
£95



and perhaps
most important of all...
IMPECCABLE SERVICE

EVERYWHERE there is an ATCO Engineer attached to an ATCO owned Branch ready to advise on any problem in connection with grass cutting.

DEMONSTRATIONS OF ANY ATCO CAN BE ARRANGED TO SUIT YOU OR YOUR GREENS COMMITTEE

The following principles for applying water are fundamental but often become overlooked to the detriment of the turf

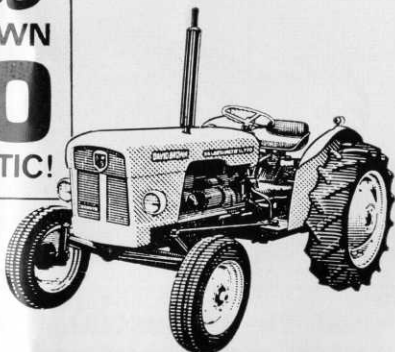
It is important to begin watering before the grass cover shows any sign of suffering from drought. In a particularly dry and windy spring, greens may well benefit from watering as early as April or May although it is more usual for turf to suffer from drought in the summer when temperatures tend to be higher and evaporation losses greater. Water should be applied slowly enough for it to be absorbed by the surfaces. Soils vary in the rates at which they are capable of accepting moisture and although very sandy soils usually permit rapid percolation, the heavier loams absorb water much less readily. Fibrous turf tends to retain moisture in wet weather giving soft soggy playing surfaces but if the mat is allowed to dry out it becomes exceedingly difficult to re-moisten, the turf therefore suffers badly from drought since most of the water applied is shed off the area. Penetration can be assisted by intensive solid tining before water is applied but the long term aim should be to reduce the fibre formation. Tops of undulations suffer in a

similar manner and local forking before watering is helpful in maintaining uniform conditions where undulations occur

It is most important to give adequate amounts of water to meet the plants' needs. There is almost always a tendency to under-water turf during dry weather. Light and infrequent applications of water may keep the turf alive but do not achieve good results. If only the surface is moistened roots tend to be active in this region and the turf becomes very tender and does not withstand wear or drought at all well. The aim should be to keep the top soil moist to a depth of at least 4 inches and preferably more. In order to achieve this something like the equivalent of 1 inch of rain per week is necessary in very dry weather. This means providing approximately five gallons of water per square yard per week under these conditions. In practice it is better to water thoroughly twice or three times per week rather than give small amounts each day.

On the other hand over-watering can be detrimental to the turf since it can under certain circumstances cause the surfaces to puddle and become badly

Get on to GIBBS
FOR THE DAVID BROWN
NEW 770
12-Speed SELECTAMATIC!



Perfect for 3-gang mowing

Sparkling new colours (orchid white, poppy red and chocolate brown); up-to-the-minute styling; increased power; golf course tyres, PLUS SELECTAMATIC—the revolutionary simplest-ever hydraulic control system

SWITCH TO THE 36 bhp 770
Years ahead in looks and performance

<p>ESTD 1844</p> <p>J. GIBBS</p> <p>LTD.</p>	<p>BEDFORD·MIDDLESEX</p> <p>Phone Feltham 5071</p>	 <p>By appointment to Her Majesty Queen Elizabeth II Suppliers of Agricultural Machinery and Implements, and Motor Vehicles</p>
<p>SOLE AGENTS DISTRIBUTORS AND AUTHORISED REPAIR AGENTS FOR RANSOMES LAWN MOWERS</p>		

4

FISONS PEATS you will need:

1. FISONS HUMULL

for dressing lawns, laying turf, or sowing grass seed.

Wholly organic, this superfine peat is specially blended to promote the growth of fine grasses. It encourages turves to knit, and assists in the essential moisture retention after they have been laid.

It's invaluable for top-dressing turf during maintenance treatment in the autumn because it promotes root activity, so necessary for growth next spring. Available in 1 cwt. bags. Minimum order 5 cwt. @ 28/- a cwt. carriage paid home.

2. OUTFIELD SEDGE PEAT

for general soil improvement, especially on sports grounds.

This is a moist peat, very good for sports grounds with sandy or thin soil or with heavy soil which bakes during drought and becomes sticky in winter. Outfield Peat will 'open' the surface and allow the freer growth of grass. It will also counteract wet and sticky surfaces.

3. FISONS SELECTED PEAT

for all-purpose soil improvement.

More decomposed than Sphagnum peat, this rich Sedge peat provides greater quantities of humus and therefore it is excellent for opening up heavy soils. Good too for making composts—John Innes Composts included, feeds humus-hungry beds and borders to produce optimum friable tilth.

4. FISONS RHODODENDRON AND SHRUB PEAT

for root establishment and mulching.

An acid peat, this grade is specifically prepared for planting and mulching rhododendrons, azaleas and ericas.

It not only improves the soil with humus, but brings strong quick root establishment and provides a perfect mulch which helps in keeping down annual weeds.



Don't forget Fisons Fertilizers and Weedkillers—all research-proved for best results.

County prices can be provided by your merchant;

or write to—FISONS HORTICULTURE LIMITED, IPSWICH, SUFFOLK.

waterlogged. Playing on very wet turf results in compaction and destroys soil structure. A relationship also exists between heavily watered turf and fungal diseases. Warm moist conditions in the turf encourage the development of, e.g. Fusarium patch disease and Ophiobolus patch disease, the incidence of both are, of course, to be avoided if at all possible. It must also be remembered that money is being thrown away whenever the irrigation system is being kept in operation unnecessarily.

Applications of water should always be timed to cause as little interference with play as possible and naturally one does not expect to see sprinklers in operation during competitive golf. Automatic night watering meets this requirement without the need for staff working overtime. Watering during the day is however, often the only practical method and some inconvenience may be created for the player. This, of course, is much less detrimental to his game in the long run than a turf badly affected by drought.

SITUATIONS VACANT

HEAD GREENKEEPER REQUIRED
West End Golf Club Ltd., Halifax, Yorkshire. Good house provided. Remuneration to be negotiated. Applications to the Secretary at the above Club.

GREENKEEPER REQUIRED. REPLY
giving age and experience to Secretary
Theydon Bois Golf Club, Epping Essex.
No accommodation available.

ASSISTANT GREENKEEPER WANTED.
£13 per week plus free house. Golf course experience essential. Permanent and progressive post to right man. Apply giving details of experience, age and present employers to the Secretary, Hartlepool Golf Club Ltd., Hart Warren, Hartlepool, Co. Durham.

MISCELLANEOUS

PROFESSIONALS AND GREENKEEPERS having stocks of used golf balls contact Sparkbrook Golf Ball Co., 295 Highgate Road, Stoney Lane, Birmingham, with a view to filling export orders.

NITROFORM CONTROLLED RELEASE

Nitrogen Fertilizer

Nitroform is an organic turf fertiliser containing 38% nitrogen.

- * Does not scorch
- * Is labour saving—only one application needed a year
- * Releases nitrogen—the vital plant food for grass throughout the growing season

- * Has no smell
 - * Easy to spread by hand or distributor
- One application feeds the grass for a whole year giving a healthy sward of a rich deep green colour and a strong root system. Also available in compound fertilisers. Ask for **Nitroform** at your usual supplier of fertilisers. In case of difficulty write to



NITROFORM

AGRICULTURAL CHEMICALS DEPT

HERCULES POWDER COMPANY LIMITED
One Great Cumberland Place London W1

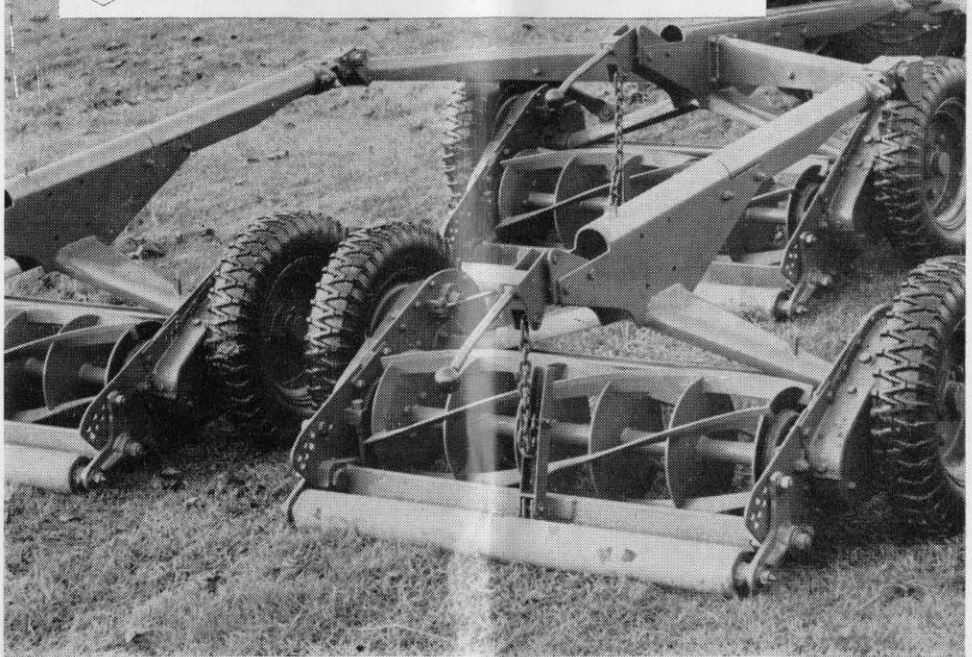
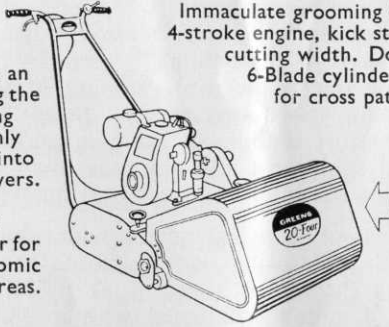
**GREENS
RANGER Mk 3
GANG
MOWERS**

Up to 11½ acres an hour! - Hugging the ground, cropping closely and evenly. Can be ganged into 3, 5 or 7-unit mowers. Greens Ranger Mowers are the complete answer for quick and economic cutting of large areas.



GREENS 20-FOUR MOTOR MOWERS

Immaculate grooming for big lawns. 4-stroke engine, kick starter, 20 inch cutting width. Dog clutch puts 6-Blade cylinder out of drive for cross paths. Drop out cutting unit.



A SHORT CUT TO PERFECTION



HAWKER SIDDELEY

GREENS MOWERS

THOMAS GREEN AND SON LIMITED, NORTH STREET, LEEDS 2

Telephone : Leeds 20357

Hawker Siddeley Group supplies mechanical, electrical and aerospace capital equipment with world-wide sales and service.

are those best suited to your idle circumstances.” He therefore advised trampling the turf while the surface was wet as a temporary remedy, but he thought that one of those hopping machines, saying “Ouf-Plonk” used by contractors in an endeavour to get back into the trench the same amount of soil that they took out, would in the long run be a sound investment. Steam rollers, he opined, were now difficult because non-turf enthusiasts were acquiring them as garden ornaments rather than essential equipment. In any case, the shrubbery tended to suffer if the driver failed to wind his little steering-wheel quickly enough.

There followed a good deal of technical advice with which I will not bore you beyond the odd quotation: “Mowing once a month at 3/16 in. will tend to reduce vigour and increase deck-chair time” A useful point, I thought. “Worm casts and mole-hills if suitably flattened with a blunt instrument will eventually produce a smooth, earth-like surface on which grass will find it difficult to compete with the more desirable weeds” Heavy top-dressing with a suitable clay soil would assist this condition.

Watering was to be restricted to the months of December and January, when the frozen droplets, besides reflecting the winter sun, would help to do the few remaining grass blades a bit of no good.

There was a useful hint on fertilising. Sodium Nitrate or Nitro Chalk, applied at 6 oz. per square yard in early September, had generally been shown to produce conspicuous bare patches before October was out and with careful neglect these

Get off
to a
good start

Supaturf

FERTILISERS



Supaturf fertilisers are scientifically blended to ensure the correct proportions of organic and inorganic ingredients. They provide a regular and sustained release of essential plant food throughout the growing season. Get off to a good start, order your Supaturf fertilisers now

For spring and summer application.

Supaturf 'A' for use on all fine turf areas Golf greens, Cricket Squares, Bowling greens etc.

Supaturf 'C' for Fairways, Outfields, Football and Hockey pitches etc.

FREE ADVICE on all aspects of the preparation, care and maintenance of sportsturf and lawns and you are invited to make full use of this service.

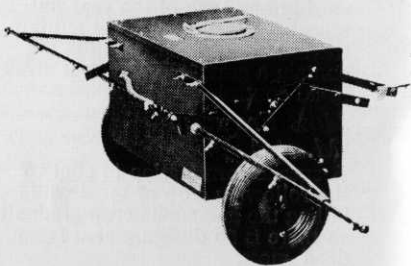
Supaturf PRODUCTS LTD., WERRINGTON, PETERBOROUGH. TEL: 71271/2
GRASS SEED FERTILISERS DRESSINGS SPORTSGROUND, PARK AND HORTICULTURAL SUPPLIES.

might go right through the following year. This rate of application, provided the material was not too evenly spread, would also scorch the remaining sward, so that I could put the mower away for a full year.

The same goal could be reached if cubes of bread soaked in a 10·15 10 solution of rum, brown sugar and water were put out at night from early Spring onwards. The passions of the grubs of *Tipula oleracea* and related species became inflamed by the sweet alcoholic bait and these thick-skinned but intensely romantic creatures multiplied rapidly at the expense of the grass roots.

Aeration had been advised in the past by the older generation of lawn expert but those, like the writer, who were opposed to blood sports, had proved that not only leather-jackets, even when intoxicated by one thing and another, but also earthworms and cockchafer grubs could suffer as the cold steel passed through them. There had, consequently, been a popular revulsion of feeling against this cruel practice and one firm specialising in turf-piercing equipment had sent all its old customers a set of soft rubber tines, guaranteed to be humane, and switched its production to wind-screen washers.

By this time I began to wonder (having been properly brought up) what he was selling. It turned out to be typewriters — The Instant Typewriter Replacement Service — the quick brown fox jumped over the lazy lawn owner. What ever happened to the dog?



Always ready for use, they can be instantly attached to any type of tractor or large mower and if weather conditions prevent the use of heavy equipment on the greens they may be operated by hand with ease and accuracy.

PRESSURE JET MARKERS LIMITED

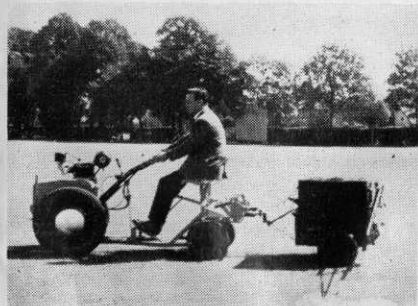
152 THE ARCHES, STAMFORD BROOK,
LONDON, W.6

Tel. RIVerside 9255

P. J. M. SPRAYERS

Simplicity of design ensures a highly efficient and trouble-free performance whilst keeping maintenance costs down to an absolute minimum.

The pump is driven off one of the land wheels, thereby obviating the use of a separate power unit. Tank capacities range from 5 to 60 gallons and spray booms are available for 7 ft., 10 ft. and 15 ft. spraying widths.





Berk Summer Range

of turf treatments for busy

Watering



Supplex Sprinkler

This triple-bore plastic hose is minutely perforated throughout its length. One end is closed so that when the perforations are opened by water pressure, a fine rain-like spray is produced which soaks without flooding—in a rectangular pattern. Supplex is the logical choice for rectangular areas. Lengths are available to cover, in one operation, tennis courts, bowling greens and cricket pitches.

'Tricoflex' Reinforced Plastic Hose

For conveying water, Tricoflex is three ways superior to rubber hose. Tricoflex withstands the kind of rough handling that soon destroys a rubber hose; it weathers better—it is

particularly resistant to long exposure to the sun—and its light weight and suppleness make it easier to coil and carry. Tricoflex hose is constructed of 3 layers—black P.V.C. inner tube, with mirror finish for optimum water flow, knitted jacket of 'Tergal' polyester fibre and an opaque vivid yellow outer cover of polythene. Tricoflex has been proved in rugged tests on building sites—will last you years



Moss Control

Berk Moss Control compounds are based on mercury—this is present in an insoluble and harmless form. Mercury not only kills moss but prevents subsequent growth—it can control moss for up to three years. Three compounds are available—the choice depends on the individual requirements and the time of the year

M.T.S. (Mercurised Turf Sand) (M of A. 1477)

This is applied at 4 oz. per square yard from early spring to late summer. It kills moss immediately, reduces weed population and, because it contains a quick-acting nitrogen fertilizer, stimulates grass growth.

Moss Killer (M of A. 1478)

This is applied at 4 oz. per square yard at any time of the year but especially prior to normal autumn treatments. Moss Killer does not contain a grass stimulant but gives rapid control over moss.

Moss Eradicant (M. of A. 1479)

A special formulation to control the following crop of moss while killing the immediate crop gradually—so there is no disfigurement from dead moss.

Hints on Moss Control

1. Moss will always invade and colonise neglected turf.
2. Do not rely on raking alone to remove moss. This spreads moss spores and fragments which can re-infest the site. Always use a moss killer in conjunction with raking.
3. Correct turf management should always be practised. After using a moss killer the factors responsible for the appearance of moss should be removed.
4. Some common causes for the appearance of moss are
 - * Poor drainage and aeration
 - * Bare patches
 - * Over-rolling and compaction
 - * Acid and undernourished soils
 - * Persistent close mowing.

groundsmen & greenkeepers

Wormkiller

Berk 25% Chlordane Wormkiller

Berk Chlordane kills worms *underground*, also controls leather-jackets, ants and chafer grubs. It is cheap and easy to apply—calling for little watering and minimum labour. Best applied in warm, showery weather during autumn or spring when worms are most active and near the surface.

Berk 20% Chlordane Wormkiller (Granular)

Applied at 80 lb. per acre, granular can be particularly useful where grass is kept long or the sward is thick.

Turf Fungicide

This fungicide contains the equivalent of 2½% Mercury and gives excellent control of Fusarium Patch (*F. nivale*) and Dollar Spot (*Sclerotinia homocarpa*) in turf. Apply in late summer or spring for Fusarium control, or when symptoms appear for control of Dollar Spot.

Application. 1 oz. per 40 sq. yards in 2 gallons of water or with 14 lbs. sand for wet and dry methods respectively

**POST THIS COUPON NOW
FOR LEAFLETS AND PRICES**

Weedkiller

Turf Weedkiller—Standard

(Ministry Approved)

A selective weedkiller controlling broad-leaved weeds in turf.

Applications 2-4 oz. per 120 sq. yards in not less than half gallon of water (4-8 pints per acre in not less than 20 gallons).

Turf Weedkiller—Super

(Ministry Approved)

A selective weedkiller controlling clover and chickweed in addition to other common broad-leaved weeds in turf.

Application. 4-8 fl. oz. per 120 sq. yards in not less than half gallon of water (6-8 pints per acre).

Free advice from Britain's most experienced Groundsman

Bert Lock was Chief Groundsman at The Oval for twenty years. Now, as the retained consultant of Berk Limited, his wealth of experience is at your disposal. He will take a look at your turf and give an expert, unbiased opinion on it. The service is entirely free. For immediate attention, write to Berk at the address below.



Berk Limited, Berk House, 8 Baker Street, London W.1. Tel: HUNter 6688

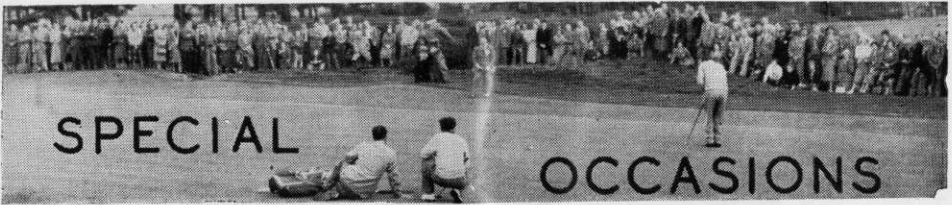
Please send me literature and prices for the following tick as appropriate

- | | | |
|--|--|--|
| <input type="checkbox"/> Suplex | <input type="checkbox"/> Tricoflex | <input type="checkbox"/> Wormkiller |
| <input type="checkbox"/> Moss Control | <input type="checkbox"/> Turf Fungicide | <input type="checkbox"/> Weedkiller |

NAME..... **POSITION**.....

ADDRESS.....

BGG1



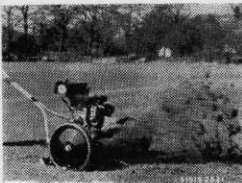
APRIL	13th	Welsh Section, Spring Meeting, Whitchurch Golf Club.
	21st	S.G.G.A. West Spring Meeting, St Cuthbert Golf Club.
	26th	Northern Section Spring Tournament, Pannal Golf Club.
	28th	North-East Spring Competition, City of Newcastle Golf Club.
	28th	North-West Spring Tournament, Wallasey Golf Club.
MAY	5th	Midland Section Spring Tournament, Kidderminster Golf Club.
	9th	North-West Section A.G.M., Garrick Hotel, 7.30 p.m.
	12th	S.G.G.A. East Annual Competition, Royal Burgess Golf Club.
	25th	East Midland Spring Tournament, Kirby Muxloe Golf Club.
	26th	S.G.G.A. North and Mid Annual Tournament, Deeside Golf Club.
JUNE	28th	Midland President's Match, Handsworth Golf Club.
AUGUST	8th } 9th } 10th }	Annual Tournament, Little Aston Golf Club.

"SISIS"
REG.
PATENTS

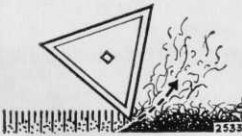
ROTORAKE and AUTO-ROTORAKE

TRADE MARKS

Vertical Turf Fibre Cutters



DIRECTION OF TRAVEL



"SISIS" Patent with tine
action cutting upwards

For many years Professional Groundsmen have raked and mown grass in an attempt to reduce turf fibre.

The "SISIS" ROTORAKE is designed to achieve this the cutting tines rotating upwards, sever the unwanted fibre and prostrate growth below the surface.

- REMOVE EXCESS FIBRE**
- REDUCE TRAILING WEEDS**
- ELIMINATE SURFACE NAP**
- MAKE MOWING MORE EFFICIENT**

The "SISIS" ROTORAKE is made in 14" and 20" Models and the Cutting reel is driven with 4-stroke engine.

The SSS AUTO-ROTORAKE is fully motorised both in respect of the fibre cutting reel and the forward overground traverse. A Heavy Duty Machine.

Demonstrations arranged on request.



"SISIS" EQUIPMENT (MAGGLESFIELD) LTD

MAGGLESFIELD - 6363 - CHESHIRE

News



from the Sections

EAST MIDLAND

Chairman
F. FROST
(Derby G.C.)

By S. Fretter
Hon. Secretary
Portland Lodge Farm
Portland Road
Kirby Muxloe, Leicester

Annual Spring Tournament

WILL BE HELD AT KIRBY MUXLOE Golf Club on Wednesday 25th May 1966. First Tee, 12.45 p.m. All members wishing to play please notify me by Monday, 16th May to enable catering arrangements to be made.

New Members

We welcome as members to this section, the following gentlemen, G Arnold and I. Toon of Kirby Muxloe, J Moore of Kibworth, J Burnham of Whetstone, W Hampson of Churlwell Manor. We hope their association with us will be long and enjoyable.

Congratulations

I would like to take this opportunity on behalf of all members of this section to congratulate B. F Mott and wish him all the best in married life.

MIDLAND

Chairman:
G. HART
(Gay Hill)

By F. Cashmore
Hon. Secretary:
76 Four Oaks Common Road
Sutton Coldfield, Warwickshire

Spring Tournament

A REMINDER THAT THIS WILL BE played at the Kidderminster Golf Club on



BY APPOINTMENT TO
HER MAJESTY THE QUEEN
Seedsman

IMPROVE YOUR TURF WITH CARTERS GRASS FERTILISERS

CARTERS SPECIAL GRASS FEEDER No. 1

An excellent steady feed for Spring and Summer use on Golf and Bowling Greens, Tennis Courts, etc. Produces a healthy growth and good colour to the finest turf. Apply evenly at 2 oz. per sq. yd. during damp weather or water in. For turf in poor condition, repeat after one month.

Prices on Application

CARTERS OUTFIELD AND FAIRWAYS FERTILISER (Spring/Summer)

Ideal for Spring renovation of Winter-Playing Pitches, Golf Fairways and other large areas of grass. Apply at 5 cwt per acre, preferably during damp weather.

Prices on Application

Full details of Grass Seeds, Fertilisers and Maintenance Equipment are now available in our "Spring Price List" post free on request. The 1966 Edition of our illustrated booklet "Treatment of Golf Courses and Sports Grounds" Free on request.

GOLF COURSE ARCHITECTS AND GRASS SEED SPECIALISTS

Telephone: **Wimbledon 5111**
Sports Turf Advisory Dept.



**RAYNES PARK
LONDON
S.W. 20**

KEEP'S

TESTED GRASS SEEDS
FOR HIGH SPEED
GOLF GREENS & FAIRWAYS
SELECTIVE WEED KILLERS
GRANULAR FERTILISERS
RECORD GRASS FERTILISER
CHLORDANE WORMKILLER

★
MAXWELL M. HART
(LONDON) LTD.

WINNERSH, WOKINGHAM
BERKSHIRE

Telephone West Forest 4242
STD Dial ORE 4314242



Thursday, 5th May Could we please have your entries by 20th April to enable catering arrangements to be made.

Annual Tournament

This year's Annual General Meeting and Tournament is being held at the Little Aston Golf Club on 8th, 9th and 10th August and I would appeal to our members to support same. We have the same few supporting it every year and as it is being held in our section I should like to see a big entry from the Midlands. I also appeal to our Vice-Presidents to do all they can to encourage the staffs on their courses to enter

R. C. CRAIG

AND CO. LTD.

SPECIALISTS IN THE REPAIR AND
MAINTENANCE OF ALL TYPES OF MOWERS

★ Agents for RANSOMES SIMS &
JEFFERIES Ltd.

★ LLOYDS & Co. Ltd.
WEBBS LAWN MOWERS

★ Distributors DENNIS BROS Ltd.

★ GANG MOWERS FOR HIRE

New Members

We welcome the following two members, M. Markham, Head Greenkeeper at Sandwell Park and G. A. Busby, Apprentice Greenkeeper at Little Aston.

SOUTHERN

By **W. Mason**

Chairman:
W. E. MOORE
(Romford)

Hon Secretary:
18 Albert Road, Hendon, N.W.4.
Tel.: SUNnyhill 0245

Lecture

GIVEN BY MR WILLIAM FINCH OF Messrs Maxicrop Ltd., on Wednesday, 16th February, was very well attended. Plenty of questions were asked and answered, in all a very educative and interesting evening was had by all. The Chairman moved a hearty vote of thanks to Mr Finch.

Spring Tournament

Will be held at the South Herts Golf Club on Wednesday, 4th May. Will all members when sending in their entries to me, please give their handicap and the name of their club, only those members whose subscriptions are paid up to date will be eligible to play. The closing date will be Monday 18th April, an early reply will be greatly appreciated.

Retirement

I have received a letter from Mr A. Thompson saying after 54 years with North Middlesex Golf Club he has now retired and the club and its members with press men invited, presented him with a clock and cheque. We wish him good health and many happy years.

New Members

We welcome to the section L. T. Edwards of Hillbarn Golf Club, D. McLellan of Malden Golf Club and F. Ainsworth of Hampstead Golf Club.

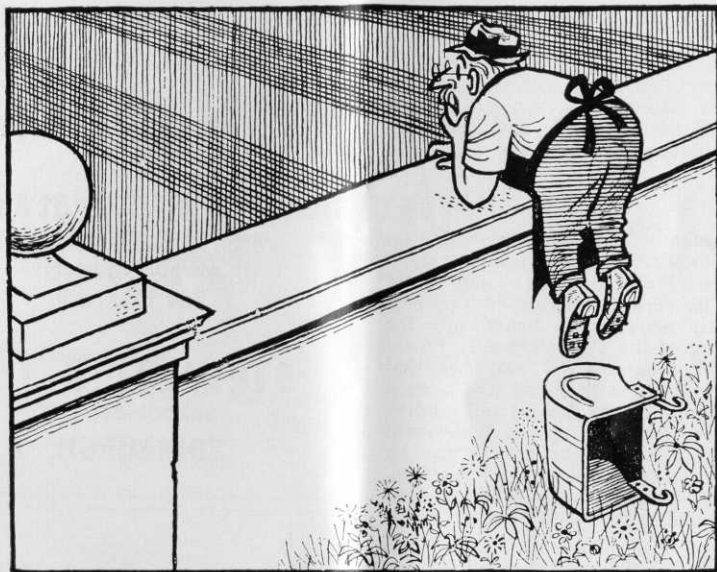
We will gladly call on you to advise on your grass cutting equipment or arrange demonstrations. Ring us now

★

**153 Arch Stamford Brook
Station, LONDON, W.6.**

RIVERSIDE 5415

When the grass on the other side looks greener



yours needs **SPORTSTURF VELVETONE!**

I.T.P. Sportsturf Velvetone is the organic lawn conditioner proved in action on the royal lawns at Ascot and the grass courts at Wimbledon.

For less than £15 an acre, the autumn/winter formula of Sportsturf Velvetone will condition your fine turf areas beautifully. Forty per cent organic, it contains trace elements and carefully balanced lawn foods exactly suited to the finer grasses.

It assists root action all winter long but doesn't encourage vigorous top growth until spring. (If you're a greenkeeper who hasn't the time or labour to apply turf dressing during the playing season, you'll find Sportsturf Velvetone extremely useful.)

For less-fine turf—I.T.P. Winter Outfield Fertilizer Seventy-four per cent organic, this high-grade fertilizer costs less than £10 an acre. It's excellent for cricket outfields, golf fairways, football grounds and other large sports areas. Good for construction of new grass surfaces too. (Also available with selective weedkiller.)

Order now from your local merchant or Fisons representative.



VELVETONE

NORTHERN

By J. Parker

Hon. Secretary:

Chairman:
D. ROBERTS 8 Goit Stock Terr., Harden
(West Bowling G.C.) Bingley Yorks.

Spring Tournament

MEMBERS ARE REMINDED THAT the closing date for entries for the Annual Tournament, to be played over the course of the Pannal Golf Club, Harrogate, on Tuesday 26th April, is Monday, 18th April. This is essential so that the draw and necessary catering arrangements can be made.

Film Show

Thirty-five members attended this show on Thursday, 24th February, held in the club house of the West Bowling Golf Club, Bradford. The film presented by Carreras Ltd., was their newest, this being only the second showing of the 1965 Piccadilly World Match Play Tournament. I am sure that all members will agree that this was a most fascinating and first class film of outstanding golfers in action over the famous Wentworth course. A vote of thanks was given by our President and seconded by the Chairman, Mr D. Roberts, to Mr C. Norton, who presented the show

PATTISSON

GOLF COURSE EQUIPMENT

Hole Tins	Tee Boxes
Cutters	Tee Plates
Staffs	Ball Cleaners
Mats	Tablets
Mowers	Rollers
Hose	Sprinklers
Mole Ploughs	Rotary Sifters

Aerating Machines
and all

Greenkeeping Tools

H. PATTISSON & CO. LTD.
STANMORE · MIDDLESEX
Telephone GRimsdyke 4171/4172



EDINBURGH

**FIBREGLASS FLAGSTAFFS
GRASS COMBS
GOLF FLAGS
AND SWITCHES**

NEW TURF SWITCH 'St Andrew'

*Metal Shaft, Fibre Glass Tip,
Length Adjustable*
£4 15s. each

STEWART & CO.,
SEEDSMEN LTD.
EDINBURGH, 2

Dinner

The first ever held by the section for members and their wives was held in the club house of the West Bowling Golf Club on Thursday, 10th March. Although we approached the venture with a certain amount of trepidation the evening was an outstanding success and I am sure all fifty-five attending thoroughly enjoyed it. The whole affair was made free and easy with no speech making and the entertainment which followed was first class. It came as a great surprise to most of us to know that one of our members, G Hartley, was a ventriloquist of outstanding ability. A vote of thanks to the catering staff of the club for their excellent service and the club committee for their kindness in allowing the use of the club house was given by our President, Mr W Mountain. As usual, on these occasions, the generosity of our President was evident and for this he was thanked by our Chairman, Donald Roberts. I feel sure that this will now become an annual occasion in the section's events.

New Members

We welcome to the section the following new members Mr J Cogan (Vice-President) and Mr W Heeles, Oakdale Golf Club.



J K Campbell

"Chinese torture?"

NORTH-WEST

By H. M. Walsh

Hon. Secretary:
78 Hadfield Street,
Oldham, Lancs.

Chairman:
D. PATE

(Royal Birkdale G.C.)

Lectures

OUR THANKS TO MR JOSS OF S.T.R.I. for a very interesting talk indeed, illustrated by some extremely good coloured slides. This concludes the present series of winter lectures and I would like to take this opportunity of thanking the members of the section for the very good support they have given to the various speakers concerned.

Spring Tournament

This will take place as stated in last month's journal at the Wallasey Golf Club.

Wallasey, Cheshire. The competition will consist of 9 holes in the morning and 18 holes in the afternoon, a total of 27 holes. Visitors play a competition in the afternoon of 18 holes. This does not prevent them from playing in the morning if they wish to do so.

I would be grateful if all members who intend to take part would kindly let me know as soon as possible so that I can make the necessary catering arrangements.

Members may invite one visitor only. A cordial welcome is extended to all associate members who wish to take part.

Annual General Meeting

Will be held at the Garrick Hotel, Fountain Street, Manchester on Monday 9th May at 7.30 p.m. Can I count on a big turn out for the occasion?

FOR HIRE

SISIS AUTOTURFMAN Aerator for hire, £25 per week Do it yourself. J B. Burnell, 2 Clarence Road, Eaglescliffe, Stockton on Tees.

Mrs Greenkeeper's Own Corner

with Ann Mawson

If you like cheese, there are a number of tasty dishes you can make. Here are a few easy ones and very adequate they are too.

Cheese Balls

4 oz. Cheddar cheese — 2 oz. flour — 2 eggs — fat — salt — pepper — Cayenne.

Grate the cheese and mix it with the flour, salt, pepper, egg yolks and cayenne. Whisk the egg whites stiffly and stir in *gently*. Drop into deep fat (HOT) from a spoon and fry until golden brown.

Cheese Cakes

2 eggs — 1 teaspoonful of chopped parsley — breadcrumbs — pepper — 1 level teaspoon salt — 4 oz. cheese — 12 oz. potatoes — fat.

Boil the potatoes and while they are still hot, mash them. Mix in the parsley salt, pepper and one egg. Grate the cheese and add. Shape the mixture into balls or flat cakes, coat with the other egg and roll in breadcrumbs. Fry in hot fat for several minutes until golden brown. If you prefer they can be grilled for about five minutes on either side or baked in a hot oven for 20 minutes. If left to stand for 30 minutes after coating, they will keep their shape better when cooked.

Cheese Delights

$\frac{1}{2}$ teaspoonful of mustard — salt — $\frac{1}{2}$ oz. butter — 8 oz. cheese — 1 egg — Worcester sauce — bread — six rashers of bacon.

Grate the cheese and mix with the beaten egg, Worcester sauce (1 teaspoonful), mustard, a good pinch of salt and the butter. Cut six slices of bread about

the size of the bacon rashers and spread thickly with the mixture, then put the bacon rashers on top. Bake for 10 minutes in a hot oven and serve immediately.

Cheese Fritters

3 oz. butter — 2 oz. grated cheese — 3 heaped teaspoonsful of breadcrumbs — 1 egg — salt — pepper.

Put the grated cheese in a basin and mix in well the beaten egg, breadcrumbs, 2 oz. of the butter, pepper and salt. Put the other ounce of butter in a frying pan and make very hot. Drop tablespoonsful of the mixture into this and fry until golden brown.

Cheese Pie

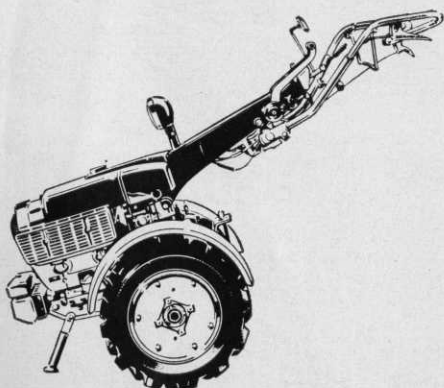
8 oz. cooked potatoes — $\frac{1}{2}$ oz. butter — 1 pint of white sauce — 3 onions — 8 oz. tomatoes — 4 oz. grated cheese — salt — pepper.

Fry the onions. Slice the potatoes and tomatoes and put them in a pie dish, alternate layers of potatoes, tomatoes and fried onions. Sprinkle with salt and pepper. Into the white sauce mix all but a little of the grated cheese and pour this over the vegetables. Sprinkle the rest of the cheese on top and lay on some slices of butter. Bake for 20 minutes in a hot oven.

Cream Cheese

Collect sour milk and cream in a bowl and keep in a warm room until it has set. Pour into a clean cloth and hang up to drain. When almost dry, take down and mash thoroughly with salt and a good pinch of paprika and very finely chopped garlic or onion. This make a delicious cheese for serving on buttered rolls or dry biscuits.

— Until May. . .



HONDA

TRACTORS, CULTIVATORS AND GENERATORS

JOIN RELF AND KENDALL

TO IMPROVE EVEN FURTHER THE SERVICE KNOWN TO ALL
WHOSE BUSINESS IS THE CARE OF PLAYING FIELDS AND
SPORTS GROUNDS

Officially Appointed Service Depot
for:
Industrial and Agricultural
Engines.



Agents for Dennis, Shanks,
Greens, Atco, Lloyds and
Allen Motor Scythes.

Main agents and distributors for Clinton Engines. Spare parts and service exchange assemblies now available from stock.

Ransomes Authorised service Repair Agents, Sales Spares & Service.

Official London area Distributors to Ransomes, Sims & Jefferies for specialist machines.

Main Agents and Distributors to Briggs & Stratton (Engine Manufacturers)



RELF AND KENDALL

406 BRIGHTON ROAD, SOUTH CROYDON, SURREY. CRO 0578
11 STATION ROAD, NEW BARNET. BARNET 8228



**Ransomes 20" Antelope
with large diameter
heavy duty 5-knife
cylinder is a
multi-purpose
time saver.**



Ask your Ransomes Area Sales and Service Distributor for a demonstration or write to



RANSOMES

RANSOMES LTD & JEFFERIES LTD · IPSWICH Telephone: IPSWICH 50211 · 0206 4041070

Printed by Lindsay & Co. Ltd., Edinburgh, for "The British Golf Greenkeeper"