

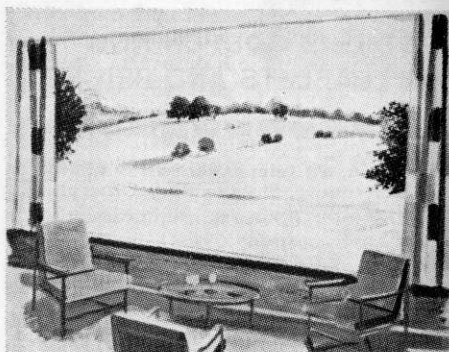
CHANGES AT BETCHWORTH PARK DORKING

Betchworth Park Golf Club has provided golf for members and visitors for over 50 years. Now it has been decided to build a new Club House. The present Club House, built many years ago, is getting too old and inevitably too small for the 600 plus members of Betchworth Park. Now it is to be retired and a new one built on the existing 17th Fairway. A replacement short hole has already been put in hand. The new green will be playable by the time the club house is finished and the existing 17th Green will be used as the putting green.

This re-siting of the club house will allow players to start from the 1st, 7th and 12th, all a short distance from the club house and have the added advantage of eliminating the long tedious climb on the 17th and 18th at the end of a game. In addition the practice ground will be immediately adjacent to the club house.

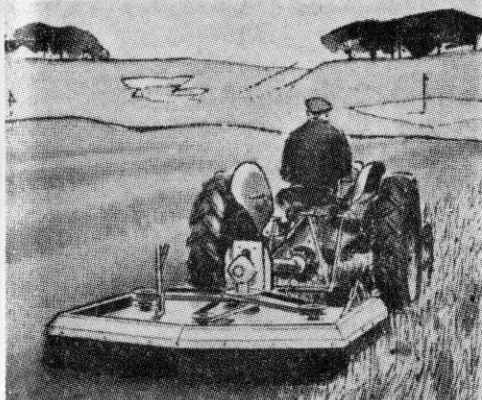
For the Money Minded

The total cost of the project will be £65,000. Half of this will be subscribed by members of the Club. The balance is being obtained by loan from the ground Landlords.



An artist's impression of the view from the proposed new Club House at Betchworth Park.

Keep the rough under control!



You've seen the anxiety of players searching for lost balls in uncontrolled rough. Time wasted. Time that could otherwise be enjoyed in play. The difficulties in keeping the rough under control are only too well known as are the odd occasions available to top the rough without interfering with play. And then only if the weather permits.

The Hayter 6/14 will give you anytime cutting at a pre-selected height up to 6 inches with easy positive adjustment. It is a rotary mower fitted with special side stone guards and is ideal for controlling the rough on golf courses.

It cannot choke, however wet the grass. Its specially balanced cutter blades revolving at high speed ensure a perfectly level finish. And not a stalk is left standing.

Hayter



By Appointment to
H. M. THE QUEEN
Manufacturers of
Agricultural Machinery
Hayter Ltd.

* For full details and literature, cut out complete advertisement and send with name and address to:-

HAYTERS (SALES) LIMITED,
34, SPELLBROOK LANE,
BISHOP'S STORTFORD, HERTS.
Tel.: Sawbridgeworth 3444-5-6

SOONER OR LATER YOU'LL BUY A HAYTER