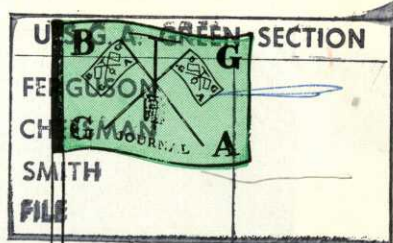


MAY

1965 1/-

The British Golf

Greenkeeper



10-knife high-speed
cutting cylinder and thin
bottom blade give the
Ransomes AUTO-CERTES
unequaled performance.
Reliable 4-stroke engine
saves time and temper



Remember! When you invest in a Ransomes machine you buy from a range of mowers which cover all your cutting requirements.

Ask your Ransomes Area Sales and Service Distributor for a demonstration or write to:—



BY APPOINTMENT
TO HER MAJESTY THE QUEEN
MANUFACTURERS OF AGRICULTURAL
& HORTICULTURAL MACHINERY
RANSOMES SIMS & JEFFERIES LTD

RANSOMES SIMS & JEFFERIES LTD. • IPSWICH

Telephone: Ipswich 54711 Telex: No. 18174

PAID 2/2

BLADES THAT MOW for BLADES THAT GROW

Relf and Kendall is the name to remember in the same breath as mowing machines. We'll take care of the blades that mow!

Our stock of new machines meets every mowing problem, head on! We pride ourselves particularly on speedy and efficient after-sales service backed by rapid service of spare parts.

You buy more than mowers from Relf and Kendall—you buy sterling service and years of experience at the same time.

Authorised service repair agents. Sales, Spares and Service.

Industrial and Agricultural Engines. Main agents and distributors to Briggs & Stratton (Engine Manufacturers).

Main agents and distributors for Clinton Engines. Spare parts and service exchange assemblies now available from stock.

Official London Area Distributors to Ransomes, Sims & Jefferies for specialist machines.

Agents for Dennis, Shanks, Greens, Atco, Lloyds and Allen Motor Scythes.

RELF AND KENDALL

406 BRIGHTON ROAD, SOUTH CROYDON, SURREY. CRO 0578

11 STATION ROAD, NEW BARNET. BARNET 8228



THE BRITISH GOLF

GREENKEEPER

HON. EDITOR : F. W. HAWTREE



FOUNDED 1912

PUBLISHED MONTHLY FOR THE
BENEFIT OF GREENKEEPERS,
GREENKEEPING AND THE GAME
OF GOLF BY THE BRITISH GOLF
GREENKEEPERS ASSOCIATION

President:

CARL BRETHERTON

Vice-Presidents:

SIR WILLIAM CARR
R. B. DAWSON, O.B.E., M.S.C.,
F.L.S.
GORDON WRIGHT
F. W. HAWTREE
S. NORGATE
I. G. NICHOLLS
F. V. SOUTHGATE
P. HAZELL
W. KINSEY
R. C. AINSWORTH

Chairman:

H. G. SHEPPARD
Weston-Super-Mare G.C.

Vice-Chairman:

J. SIMPSON
Ponteland G.C.

Hon. Secretary & Treasurer:

C. H. DIX
Addington Court G.C.
Featherbed Lane
Addington, Croydon, Surrey

Executive Committee:

Carl Bretherton (President),
G. Herrington, J. G. Bryan,
E. H. Benbow, S. T. McNeice,
J. Parker, J. Simpson,
A. A. Cockfield, V. Crabtree,
E. W. Folkes, D. G. Lord

Hon. Auditors:

Messrs. SMALLFIELD RAWLINS AND
Co., Candlewick House, 116/126
Cannon Street, London, E.C.4

Hon. Solicitor:

R. A. BECK
21 Lime Street, London, E.C.3

The Association is affiliated to the
English and Welsh Golf Unions.

No. 242 New Series

MAY 1965

*I search the rough,
The out-of-bounds,
I even check the bunkers.
The balls I lose
Are spanking new.
The ones I find are clunkers!*

MAY

CONTENTS

Page	3 TEE SHOTS
4	GOLF COURSES AND GREENKEEPING IN THE SOUTH OF FRANCE
12	CHANGES AT BETCH- WORTH PARK, DORKING
13	SECTION NOTES
16	S.G.G.A. NEWS
17	SITUATIONS VACANT
18	SPECIAL OCCASIONS
19	MRS. GREENKEEPER
20	S.T.R.I. BOARD MEETS

EDITORIAL AND ADVERTISEMENT OFFICES: Addington Court Golf Club, Featherbed Lane, Addington, Croydon, Surrey. Telephone: SANDerstead 0281. SUBSCRIPTION RATE: 14/- for 12 issues post paid. Published during the first week of each month. LATEST COPY DATE: 8th of month prior to insertion. All rights reserved. Reproduction of original articles and photographs in whole or in part is prohibited. This Magazine shall not, without the written consent of the Publishers first given, be re-sold, lent, hired out, or otherwise disposed of. Contributions and photographs of interest are invited.

TO INSERT A CLASSIFIED ADVERTISEMENT, write to the Advertisement Manager at the above address. The rate is 6d. per word (minimum 15 words). Box Number, 1/6 extra. Remittance must be sent with order. Please state number of insertions required and write advertisement in block letters. Advertisements will be inserted in the first available issue.



ATCO

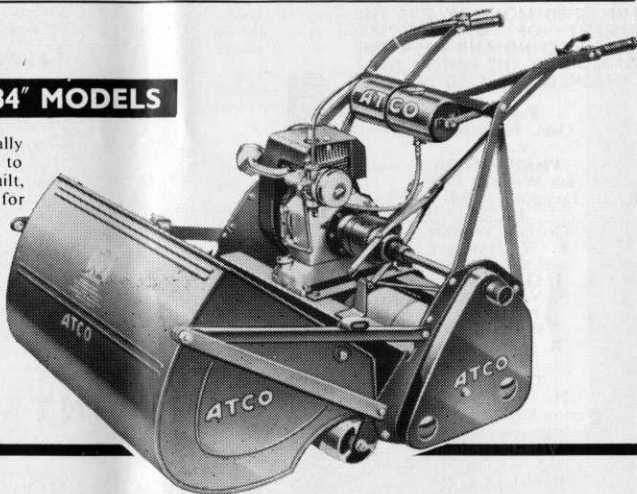
FOR THE GOLF COURSE – *and for Life*

PARTICULARLY

THE 20", 24", 28" & 34" MODELS

These machines are designed specially for those with large areas of grass to mow. They are ruggedly built, efficient and economical—ideal for the high hourage user. Every Golf Course needs at least one of these machines, for mowing the approaches to the Greens and all those areas of grass which need a finer cut than can be obtained with a gang mower

**20" models
from £53**



ATCO's range of equipment for Golf Courses covers every possible requirement from the 12" Roller type right up to the 34" Roller type, and Gang mowers as well. Then, of course, there is a full range of Rotaries and Sidewheels.

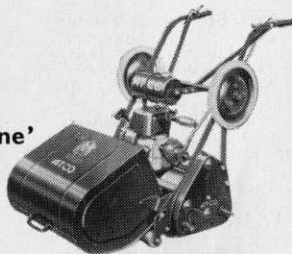
*and perhaps most important
of all* **IMPECCABLE SERVICE**

EVERYWHERE there is an ATCO Engineer attached to an ATCO owned Branch ready to advise on any problem in connection with grass cutting.

* **DEMONSTRATIONS OF ANY ATCO
CAN BE ARRANGED TO SUIT YOU
OR YOUR GREENS COMMITTEE**

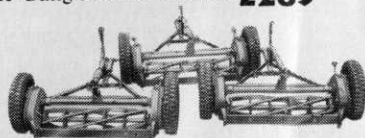
**CHARLES H. PUGH LIMITED
P.O. BOX 256, ATCO WORKS, BIRMINGHAM, 9.**

**The 20"
SPECIAL
MODEL
for 'superfine'
mowing of
greens.
£90**



**ATCO GANG MOWERS
for the FAIRWAYS**

Unique—because individual units can be 'ganged' in multiples of one to seven units. Three models are available. The Triple Gang illustrated costs **£289**



TEE SHOTS



by the Editor

Mr W. J. Gardner, M.B.E., is this year retiring from the position of Hon. Secretary of the Artisan Golfers Association which he has held for over thirty years. Even earlier he was Assistant Hon. Secretary and he has been the hub on which the Association has turned so smoothly since it became the great force in golf which he is now handing over. There are few such records of devotion and unflinching enthusiasm in golf or, indeed, in any other sphere. The many greenkeepers who know him will join in thanking him and looking forward to seeing him at Artisan functions without the same responsibility but with the same ready word for the hundreds of golfers who value his friendship.

* * *

A proposal to build on part of Reading Golf Club has been turned down by Reading's Planning Committee.

The application by Caversham and Oxon Golf Club Ltd. was to use part of the course at the south end fronting Kidmore End Road.

The committee refused on the grounds that the route of the South Wales motorway is not yet settled. One possible route would pass through the northern tip of the borough and might affect the golf course.

* * *

We have learnt with much sorrow of the death of two members of the Southern Section last month. Tom Chamberlain of Highgate Golf Club died in hospital just before Easter and F. C. Neal of Pinner died on Friday, 9th April.

R. C. CRAIG

AND CO. LTD.

SPECIALISTS IN THE REPAIR AND MAINTENANCE OF ALL TYPES OF MOWERS

★ Agents for: RANSOMES, SIMS & JEFFERIES Ltd.

★ LLOYDS & Co. Ltd. WEBBS LAWN MOWERS

★ Distributors: DENNIS BROS Ltd.

★ GANG MOWERS FOR HIRE

We will gladly call on you to advise on your grass cutting equipment or arrange demonstrations. Ring us now.

★

153 Arch Stamford Brook Station, LONDON, W.6.

RIVERSIDE 5415

M. G. FENN

discusses Golf Courses and Greenkeeping in the South of France

ALTHOUGH the French Riviera has become one of Europe's most popular holiday centres, the number of golf courses open for play during the summer is less than during the winter and early spring.

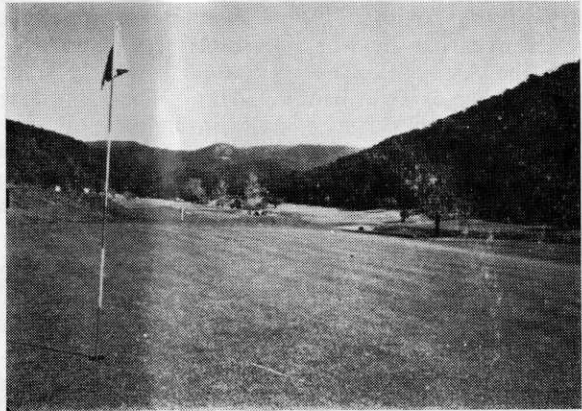
How is it that golf has taken a step back here while elsewhere during the festive and holiday seasons it has made and is making enormous strides? Perhaps a quick glance back into the history of golf on the Riviera will help us to understand the paradox.

these conditions is indeed a difficult one.

The basic causes of these difficulties can be summarised as follows:—

- (a) Lack of water.
- (b) Poorness of soil, lack of suitable soil conditioning, and failure to create a top soil of sufficient depth and quality to retain moisture.
- (c) Lack of suitable grasses capable of withstanding dryness and heat.

*The 18th Green
at Valeros with
the 1st and 6th
beyond.*



During the latter part of the 19th century and for nearly the first 40 years of the 20th century the Riviera enjoyed a busy and fashionable winter season in which golf was one of the popular sports. During the summer little holiday activity was known and the Riviera did not enjoy its present popularity.

From all this it is quite natural to assume that most golf courses on the Côte d'Azur were built entirely for winter and spring purposes and not to resist the fierce heat of long, dry summers. Because of this, some courses have to close down during the summer months whilst others remain open only with difficulty and the problem of maintaining first-class turf under

All these considerations came into question some three years ago when it was decided to construct a golf course of permanent character situated between Hyères and Le Lavandou.

This course, now known as the Golf Club de Valcros, had been beautifully planned and designed by Mr F. W. Hawtree over very difficult country and it had to remain green throughout the year.

Valcros lies in a magnificent valley surrounded by mountains covered with cork oak, pines and many other fine trees. And in this valley there existed in abundance the all important thing, *Water*. The former owners had made a barrage containing 85,000 cubic meters of water, whilst the possibilities

Talk about perfect turf?

Walk about perfect turf!

with

'CLOVOTOX' Selective weedkiller for controlling clovers and other weeds in turf.

'DICOTOX' Showerproof selective weedkiller for economical general weed control in turf.

'DICOTOX' EXTRA Four times as concentrated as 'Dicotox'.

'SUPERTOX' 30 Broad spectrum selective weedkiller for turf. Kills weeds *and* clovers.

'MERSIL' Concentrated turf fungicide with rapid activity. In powder form for application as a suspension in water.

'MERFUSAN' Turf fungicide with similar range of action to that of 'Mersil'. In powder form for dry application.

DDT CONCENTRATE Insecticide for the control of turf pests including leatherjackets.

MERCURY BICHLORIDE Controls worms.

Names quoted thus 'Clovotox' are trade marks the property of May & Baker Ltd.

Talk to
MAY & BAKER LTD
DAGENHAM ESSEX
Tel: DOMinion 3060 • Exts. 342 and 359

The people with turf
protection know-how

M&B BRAND PRODUCTS



HA2873

of a second barrage were bright since the swift running mountain streams could fill a barrage of considerably larger dimensions than the first one.

The situation of top soil for the greens and tees was also encouraging, since, in various parts of the Estate, there existed plenty of top soil of quite good quality.

The next question was the type of grass to implant on the course. Local tradition in the South of France tends to the theory that the orthodox grasses sown in the more temperate zones of Europe do not survive the heat and dryness of the Mediterranean summer climate.

On some of the courses, hot-country grasses like *Cynodon*, *Dactylon* and *Kikuyu* grass have been tried out, but on the whole they have not given good results. They die back during the winter months and leave little or no grass for long periods during the winter and spring.

It was, therefore, decided to try out some experimental grass plots composed of varying mixtures of the more resistant species of grasses.

Promising Results!

The results obtained from the trial plots were encouraging. The grasses survived quite well with regular watering and without special treatment, fertilisers, top-dressing or, indeed, soil preparation before sowing.

From these results it appeared possible to create really first-class turf with proper soil preparation before sowing and later with first-class upkeep and the usual procedures adopted in the maintenance of good-class turf.

The greens at Valcros were, therefore, sown with an orthodox Bent/Fescue mixture of Highlight Chewing's Fescue and American Browntop Bent. This mixture has thrived well from the beginning and now after the first year the greens give every indication of becoming first class.

The fairways, of course, presented by far the toughest problem because their size precluded the more intensive preparation possible for the smaller

areas of the greens. Nevertheless, these were sown down with a good quality seeds mixture composed of Chewing's Fescue, Creeping Red Fescue, Smooth Stalked Meadow Grass (Dutch Prato), American Browntop and Dutch Rye Grass (Heraf).

This mixture has done extremely well and has stood up to the exceptional heat and dryness of last year's summer aided, of course, by plenty of water, fertiliser and dressings of organic matter.

The tees were sown with much the same type of seeds as those used for the fairways, the main difference being that the Dutch Smooth Stalked Meadow Grass was replaced by Merion Blue Grass which has thrived and developed rapidly in the soil and climate of Valcros.

Now that a full year has passed, it may be of some interest to record some of the current upkeep problems and results.

Fertilisation

The same type of fertilisers were used on the new turf at Valcros as those used generally elsewhere. The greens were fertilised in the early part of the growing season with complete fertiliser mixtures containing sulphate of ammonia, dried blood, superphosphate, sulphate of potash and sulphate of iron.

Towards the end of the season the fertilisers were gradually reduced to light applications of nitrogen in the form of sulphate of ammonia.

Fairways and tees received regular applications of compound granular fertiliser. Experience over a full growing season at Valcros does suggest that rather more fertiliser is necessary in this warmer climate due, perhaps, to the ultra-rapid growth of the grass and also to a very heavy watering and cutting programme.

Diseases

These are, if anything, more dangerous in the warm climate of the Mediterranean. *Fusarium Patch Disease*



cut the lot with a **BROTT**

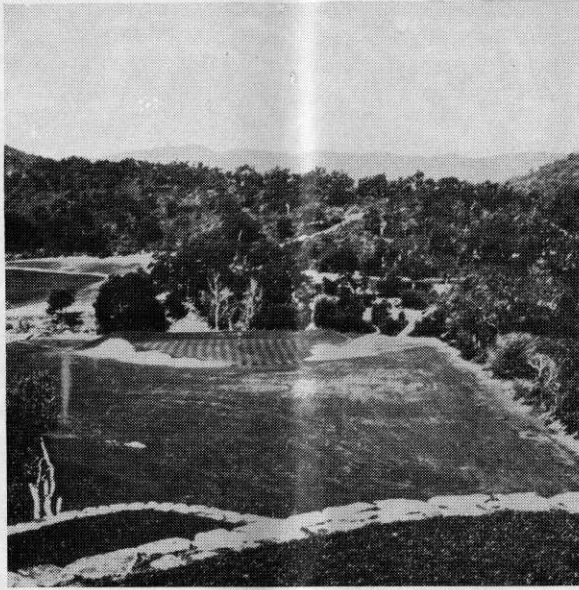
BROTT 20 - A REAL ADVANCE IN GRASSCUTTING TECHNIQUE

The day you get a BROTT will be the day you discover what a real grasscutter will do. With its unique cutting action it cuts the finest lawns or the roughest orchard grass—3 speed and reverse to deal with all conditions—backwards or forwards. It collects leaves and rubbish; maintenance is negligible. It cuts and rolls up to $\frac{1}{2}$ acre per hour and collects the grass into large easily handled bags—or into a trailer drawn behind—or spreads it behind as a mulch. The operator rides in comfort and safety all day long and it has all-year round usage. Instantly adjustable cutting height. Every grasscutting advantage in one magnificent machine. Send for full details today—and for the name of your local authorised dealer.

Manufactured solely by the patentees:
Edward Thomas & Co. (Oswestry) Ltd.,
(Dept. S6), Whittington Road,
OSWESTRY, SHROPSHIRE.

Tel: 3271 (3 lines)





propagates with incredible rapidity and will slash across a green literally in 24 hours.

Some trouble was also experienced with *Ophiolobus Graminis* during the month of July but good control was obtained by the use of a Mercury Fungicide called Solusanigran. This product gives excellent control of Fusarium as well.

One of the difficulties in treating turf diseases here is the question of watering with the result that the fungicides employed are often washed away.

The only formula is to water heavily before treatment and thoroughly soak the ground to a good depth, carry out the treatment and then leave the greens as long as can be risked before watering again.

The all important thing is to avoid trouble by immediate detection of disease and rapid treatment or, even better, well-timed preventive treatment before disease appears.

Weed Control

So far this has not presented a very great problem, because the soil at Valcross has a fairly low pH. Clover has been one of the chief enemies but responded very well to C.M.P.P. selective weed killers.

The short 14th has a deep watercourse behind the green to add to the interest.

Pests

Cutworms are our chief enemy here. These caterpillars invade the greens in hordes eating the young grass shoots voraciously. If left for long, the cutworms are quite capable of thinning out the grass to the extent of serious damage.

Chlordane mixed with sand or compost has given good results—20 per cent Chlordane was used and applied at 9 grs. to the square metre. Good control was also obtained with D.D.T. (5 per cent). This was applied at 30 grs. to the square metre.

Treatment against cutworms has to be repeated quite often for even after the greens have been treated, fresh armies of these pests invade the greens anew. So numerous are these armies that they can often be seen making their way to the greens.

Sowing

Can take place from the beginning of March till June and from September

to the middle of November. That is one of the great advantages that the Mediterranean climate offers to the greenkeeper and a priceless asset in the making of new golf courses. Germination of the seed is rapid by virtue of the soil warmth. Growth and colonisation of the grass is amazingly quick too, with the result that weed competition in new swards is appreciably reduced.

Indeed, it is true to say that the greenkeeper is not always faced with disadvantages, for another asset he has, is comparatively mild and warm winters which allow him to proceed almost without interruption on his winter programme of work.

Watering

Has to be intensive and frequent. The greens are watered by pop-up sprinklers placed around the perimeter. Normally between five and six sprinklers to each green.

The tees are watered by the same system. The system is semi-automatic

and five or six holes can be watered at a time. Watering has to be done in the early morning or evening to avoid loss of water through evaporation.

The fairways are watered by means of self-travelling sprinklers. These sprinklers pull themselves forward by means of a thin cable attached to a small steel anchor.

The system is a great labour saver for the sprinklers can be set to cover a distance of 150 yards without being touched and they can water over a width of 40 yards. Valcros possesses 18 sprinklers which are capable of watering 2,700 yards of fairway each night, thus allowing each fairway to be watered three times a week.

We have been helped greatly in all our work by the constant help and advice of Mr F. W. Hawtree and by The Sports Turf Research Institute with their ever-ready advice on many of our problems. Finally, congratulations to our young greenkeeper, Mr Arcani, who handled many problems and many men for the first time in his life with such deserved success.

"SISIS" REGD PATENTS

TURF MANAGEMENT EQUIPMENT

for GOLF COURSE FAIRWAYS

12ft SCARIFIER AND BRUSH IMPLEMENTS. Model LSB/12

- For all tractors with hydraulic Linkage
- Simply and quickly attached without special tools.
- Controlled from driving position.
- Outer sections fold for transport through Gateways.
- Heads flexibly mounted for following ground contours.
- Interchangeable Brush Sections can be quickly substituted for the rake scarifier units.

RAKE SCARIFYING

with the coiled spring tine implement, regularly applied, will assist in eradicating course growth and trailing weeds. The grasses and weed seed heads are raised for mowing. Constant use improves the sward density as the grass plants are encouraged to colonise bare or weedy patches.

A fully illustrated brochure, reference LLF, sent on request.



"SISIS" Patent EQUIPMENT,

W. HARGREAVES & Co. Ltd.,

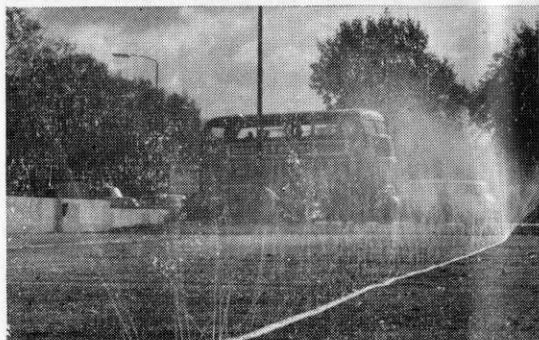
MACCLESFIELD - 6363 - CHESHIRE



Berk Summer Range

of turf treatments for busy

Watering

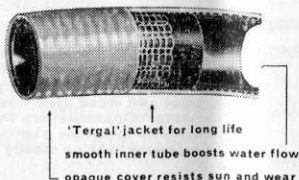


'Supplex' Sprinkler

This triple-bore plastic hose is minutely perforated throughout its length. One end is closed so that when the perforations are opened by water pressure, a *fine* rain-like spray is produced which soaks without flooding – in a rectangular pattern. Supplex is the logical choice for rectangular areas. Lengths are available to cover, in one operation, tennis courts, bowling greens and cricket pitches.

'Tricoflex' Reinforced Plastic Hose

For conveying water, Tricoflex is three ways superior to rubber hose. Tricoflex withstands the kind of rough handling that soon destroys a rubber hose; it weathers better – it is particularly resistant to long exposure to the sun – and its light weight and suppleness make it easier to coil and carry. Tricoflex hose is constructed of 3 layers: black P.V.C. inner tube, with mirror finish for optimum water flow, knitted jacket of 'Tergal' polyester fibre and an opaque vivid yellow outer cover of polythene. Tricoflex has been proved in rugged tests on building sites – will last you years!



Moss Control

Berk Moss Control compounds are based on mercury – this is present in an insoluble and harmless form. Mercury not only kills moss but prevents subsequent growth – it can control moss for up to three years. Three compounds are available: the choice depends on the individual requirements and the time of the year.

M.T.S. (Mercurised Turf Sand)

This is applied at 4 oz. per square yard from early spring to late summer. It kills moss immediately, reduces weed population and, because it contains a quick-acting nitrogen fertilizer, stimulates grass growth.

Moss Killer

This is applied at 4 oz. per square yard at any time of the year but especially prior to normal autumn treatments. Moss Killer does not contain a grass stimulant but gives rapid control over moss.

Moss Eradicant

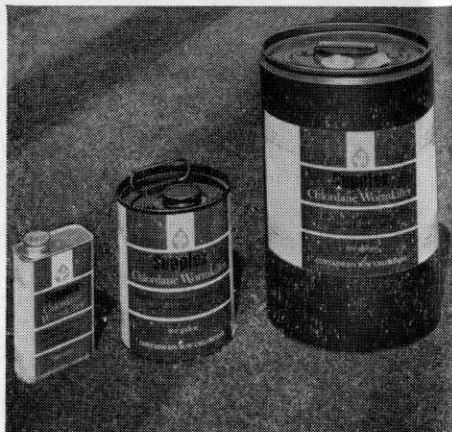
A special formulation to control the following crop of moss while killing the immediate crop gradually – so there is no disfigurement from dead moss.

Hints on Moss Control

1. Moss will always invade and colonise neglected turf.
2. Do not rely on raking alone to remove moss. This spreads moss spores and fragments which can re-infest the site. Always use a moss killer in conjunction with raking.
3. Correct turf management should always be practised. After using a moss killer, the factors responsible for the appearance of moss should be removed.
4. Some common causes for the appearance of moss are:
 - *Poor drainage and aeration
 - *Bare patches
 - *Over-rolling and compaction
 - *Acid and undernourished soils
 - *Persistent close mowing.

groundsmen & greenkeepers

Wormkiller



Berk 25% Chlordane Wormkiller
Suplex Chlordane kills worms *underground* and kills leatherjackets, ants and chafer grubs. It is cheap and easy to apply – calling for very little watering and minimum labour. Best applied in warm, showery weather during autumn or spring when worms are most active and near the surface

Berk 20% Chloride Wormkiller (Granular)
Applied at 80 lb. per acre, this form of Chlordane is particularly useful where grass is kept long or the sward is thick.

Fertilizers

Green Gold 'Lawn Feed'
A special lightweight fertilizer with high nitrogen content providing an immediate balanced feed, with prolonged nitrogen release, which encourages growth throughout the growing season. One 10 lb. bag is the equivalent of a 56 lb. bag of conventional fertilizer. Rate of application – only $\frac{3}{4}$ oz. per square yard.

Green Gold 'Weed and Feed'
This is a lightweight fertilizer incorporating a powerful weedkiller – the ideal fertilizer for weed-infested turf. Rate of application – only $\frac{3}{4}$ oz. per square yard. Both 'Lawn Feed' and 'Weed and Feed' can be applied using a standard distributor.

'Thrive'
A balanced organic fertilizer with the essential trace elements, in pellet form. Ideal for ornamental borders. Applied as base dressing at 4 oz. per square yard and as top dressing at 2 oz. per square yard.

POST THIS COUPON NOW FOR LEAFLETS AND PRICES

F. W. Berk and Co. Ltd, Berk House, 8 Baker Street, London, W.1 Telephone: HUNter 6688

Please send me literature and prices for the following (tick as appropriate).

Supplex Tricoflex Moss Control Wormkiller Fertilizer

NAME.....POSITION.....

ADDRESS.....

(B.G.G./M)

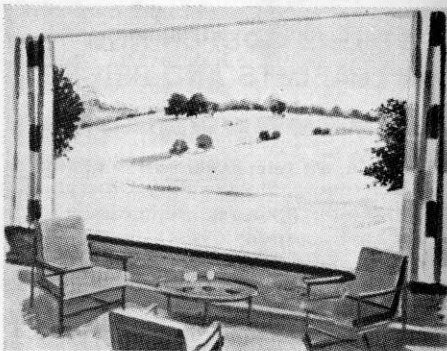
CHANGES AT BETCHWORTH PARK DORKING

Betchworth Park Golf Club has provided golf for members and visitors for over 50 years. Now it has been decided to build a new Club House. The present Club House, built many years ago, is getting too old and inevitably too small for the 600 plus members of Betchworth Park. Now it is to be retired and a new one built on the existing 17th Fairway. A replacement short hole has already been put in hand. The new green will be playable by the time the club house is finished and the existing 17th Green will be used as the putting green.

This re-siting of the club house will allow players to start from the 1st, 7th and 12th, all a short distance from the club house and have the added advantage of eliminating the long tedious climb on the 17th and 18th at the end of a game. In addition the practice ground will be immediately adjacent to the club house.

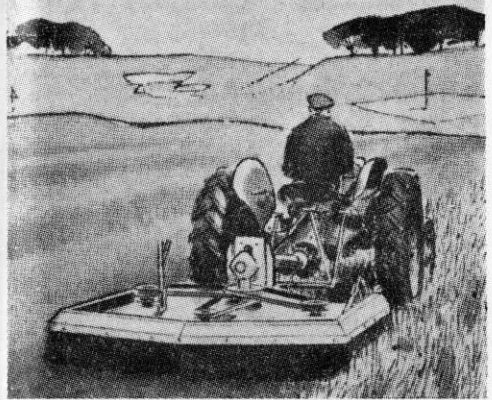
For the Money Minded

The total cost of the project will be £65,000. Half of this will be subscribed by members of the Club. The balance is being obtained by loan from the ground Landlords.



An artist's impression of the view from the proposed new Club House at Betchworth Park.

Keep the rough under control!



You've seen the anxiety of players searching for lost balls in uncontrolled rough. Time wasted. Time that could otherwise be enjoyed in play. The difficulties in keeping the rough under control are only too well known as are the odd occasions available to top the rough without interfering with play. And then only if the weather permits.

The Hayter 6/14 will give you anytime cutting at a pre-selected height up to 6 inches with easy positive adjustment. It is a rotary mower fitted with special side stone guards and is ideal for controlling the rough on golf courses.

It cannot choke, however wet the grass. Its specially balanced cutter blades revolving at high speed ensure a perfectly level finish. And not a stalk is left standing.

Hayter



* For full details and literature, cut out complete advertisement and send with name and address to:-

HAYTERS (SALES) LIMITED,
34, SPELLBROOK LANE,
BISHOP'S STORTFORD, HERTS.
Tel.: Sawbridgeworth 3444-5-6

SOONER OR LATER YOU'LL BUY A HAYTER

News



from the Sections

WELSH

Chairman:
M. GEDDES
(Royal Porthcawl)

By S. A. Tucker
Hon. Secretary:
36 Clase Road
Morrison
Swansea, Glam.

Spring Meeting

WITH THE KIND PERMISSION OF the Captain and Committee of the Dinas Powis Golf Club we were able to hold our Spring Meeting at their course. We were very lucky with the weather having a good day of sunshine and the course was in excellent condition. Our thanks to the staff for the way they looked after us.

We played a 27 hole aggregate medal in two handicap sections. Scratch to 18 and 19 to 24. D. H. Jones of Llantrisant won the Cardiff Cup and half a tea service with a net 100; 2nd was H. Fry, Jnr., net 107; 3rd D. G. Lord 110½. With the 19-24, 1st was won by G. Phillips, net 105; 2nd W. Lewis, net 118; 3rd W. Hooper, net 123. We had a very good attendance of 26 members.

A.G.M.

Our Summer Meeting will be held at the Southerndown Golf Club on 1st June when we will be holding our Annual General Meeting. An 18 hole competition will be played for the John Duncan Cup, Runner Up Cup has been given by the family of the late John O'Gorman. Birdie Cup will be given for the 19-24 handicap. Please come along in good time, if the weather is bad we will hold the A.G.M. in the morning hoping the weather will clear by the afternoon. Entries please, no later than 14th May.

Any member having a proposition or suggestion for the A.G.M. please forward same to me not later than 16th May.

NORTHERN

By J. Parker
Chairman: S. BAILES
Hon. Secretary: 8 Goit Stock Terr., Harden
Bingley, Yorks.

Visit to S.T.R.I.

ARRANGEMENTS HAVE BEEN MADE for the section to visit the Sports Turf Research Institute, Bingley, on Wednesday, 2nd June.

Members attending are asked to assemble outside the offices at 1.45 p.m. The visit will be followed by the Annual General Meeting of the section, details of which will be shown on the balance sheet. Refreshments will be available in the Mansion café.

March Lecture

The last lecture of the winter session was held on Monday, 22nd March in the Market Tavern, Bradford. We were pleased to have as the Speaker our Hon. Editor and well-known Golf Course Architect, Mr F. W. Hawtree.

Unfortunately the weather was about the worst of the winter and only twenty-five ventured out. Mr Hawtree took us on a "tour" of Golf Courses in England and on the Continent, illustrating his talk with colour slides. This was followed by questions and discussion and the whole evening was most enjoyable and instructive. A vote of thanks was proposed by Mr S. Bailes and Mr D. Roberts respectively.

Subscriptions

Members are reminded that subscriptions for the year 1965-1966 become due on 1st May. Prompt payment would be much appreciated.

SHEFFIELD

Chairman:
G. HERRINGTON
(Lindrick)

By J. J. Dearlove
Hon. Secretary:
63 Langsett Avenue
Sheffield, 6

Winter Meeting

OUR LAST MEETING OF THE winter programme at the Brunswick Hotel on Thursday, 25th March, was devoted to a talk on the training of apprentices.

Mr B. M. Wood the Secretary of the Joint Council for Golf Greenkeepers Apprenticeships came along to explain the scheme, which he did very thoroughly indeed.

Unfortunately only five golf clubs were officially represented out of twenty-five invited to attend, hardly good enough considering Mr Wood's journey. The greenkeepers, however, did consider the meeting to be important and gave their usual support to bring the attendance up to about thirty.

A number of interesting points did evolve

from the meeting and high on the list was for the scheme to be given more publicity and for apprentices to be given Diplomas of Qualification on completion of training.

The question of wages was again in prominence, it appears that a more detailed scale should be decided upon at section level now that some guidance has been given by the Executive Committee. I have received a number of requests for details of wages quite recently and can still only refer to the *Report on Wages Survey* in the January issue of this Journal.

SOUTHERN

By W. Mason

Chairman:
W. E. MOORE
(Romford)

Hon Secretary:
18 Albert Road, Hendon, N.W.4.
Tel.: SUNnyhill 0245

Quiz

OUR LAST LECTURE IN THE FORM of a Quiz kept J. K. Glass, our Quiz Master, very busy. All kinds of questions were asked, one rather unusual one being, should tees be constructed to have fall from back to front or vice-versa. After quite a debate the majority were in favour that they should be made as level as possible.

Dinner

Our Dinner proved quite an enjoyable occasion. We were sorry that owing to illness our old friend C. A. Tydeman could not come along and we all wish him a speedy recovery. Owing to various circumstances Mr Carl Bretherton, the Chairman Mr Sheppard and Mr Moss were unable to attend.

A.G.M.

Our section Annual General Meeting will be held as usual at the Talbot Restaurant. Please make a note of the date, Wednesday, 9th June. We hope every effort will be made by members to come along.

May I remind you that 1st May is the end of our financial year and it would be a great help to me if you will send along your subscriptions without delay.

NORTH-EAST

By D. Earsman

Chairman:
J. SIMPSON
(Ponteland G.C.)

Hon. Secretary:
Arcot Hall Cottage
Dudley
Newcastle-on-Tyne, 3

Lecture

A VERY INTERESTING LECTURE on "Turf Diseases" given by Mr Lidgate of S.T.R.I. was held on Thursday, 17th March, at the Carlisle Hotel, Newcastle, in conjunction with the N.A.G. With the aid of slides Mr Lidgate discussed most of

PATISSON

GOLF COURSE EQUIPMENT

Hole Tins	Tee Boxes
Cutters	Tee Plates
Staffs	Ball Cleaners
Mats	Tablets
Mowers	Rollers
Hose	Sprinklers
Mole Ploughs	Rotary Sifter
Aerating Machines	
and all	
Greenkeeping Tools	

H. PATTISSON & CO. LTD.
STANMORE · MIDDLESEX
Telephone GRImdsyke 4171/4172

the fungal diseases and afterwards answered many questions put to him.

Lecture and Film Show

A lecture and film show was held on on 25th March at the Crown Hotel. It was given by Mr Beveridge of Ransomes, Sims & Jefferies who gave us plenty of good information on maintenance and answered the many questions fired at him by members.

Our Chairman, Mr J. Simpson, on behalf of the greenkeepers and groundsmen, thanked Mr Beveridge and said how pleased he was to welcome him to the North East.

New Appointment

Our best wishes to Mr Thompson on his appointment as Head Greenkeeper at Whitby Golf Club.

MIDLAND

By F. Cashmore

Chairman:
G. HART
(Gay Hill)

Hon. Secretary:
76 Four Oaks Common Road
Sutton Coldfield, Warwickshire

President's Match

THIS ANNUAL EVENT, WHEN OUR President, Mr Carl Bretherton, invites us to Handsworth Golf Club to play against his team chosen from the best of the Midlands Amateur Golfers, will be held on the evening of 22nd June. Most of you are familiar with the arrangements and I hope you will show your appreciation of Mr

Bretherton's efforts on our behalf by turning up in full strength.

I shall be away on holiday from 22nd May until 5th June. Will anyone not able to play please let me know after then.

Autumn Tournament

The Bloxwich Golf Club have kindly granted us the courtesy of their course for our Autumn Tournament on Thursday, 16th September. We thank them for their kindness and look forward to our visit.

New Members

The following new members will be joining us on 1st May. We give them a cordial invitation to join us in our activities:—
W. J. Marnock, Head Greenkeeper, Coventry Hearsall Golf Club, P. J. Coleman, Apprentice at Oxley Park Golf Club, and R. J. Erratt, Associate Member, Harborne Golf Club.

EAST MIDLAND

(Derby G.C.)

Chairman:
F. FROST

By S. Fretter

Hon. Secretary:
Portland Lodge Farm
Portland Road
Kirby Muxloe, Leicester

Annual Spring Tournament

AS ALREADY ANNOUNCED IN THE forthcoming occasions the Spring Tournament will be held on Wednesday, 12th May at the Northamptonshire County Golf Club, Chapel Brampton. This will be an 18 hole Medal Event, commencing at 1 p.m.

As I failed to make this announcement in the April issue of the Journal I have notified members by post. If by any chance you have not received any notice and wish to attend please notify me at once. My club telephone number is Leicester 774121.

New Secretary

At the last Annual General Meeting of the section, S. Fretter promised he would take over duties as Honorary Secretary of the section as soon as business commitments allowed him to do so. He has now informed me that he is ready to take over.

All correspondence should now be addressed to S. Fretter, Portland Lodge, Portland Road, Kirby Muxloe, Leicestershire.

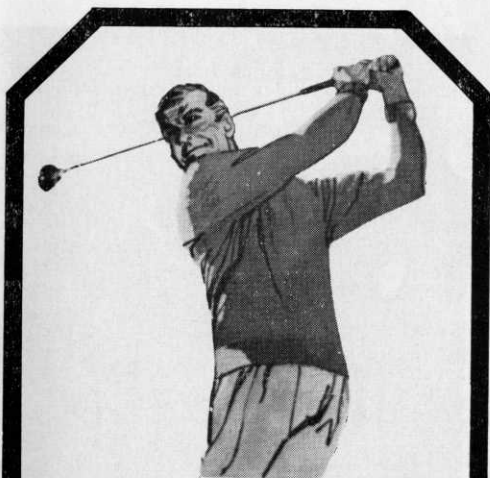
Subscriptions

May I remind members that their subscriptions for the year 1965-1966 are now due. Please send them to A. Thornton, 15 Trent Road, Beeston, Notts.

Adv. for a golf driving range: "Golf instruction. Slide and Swings for Children. Come out and hit a few."

MISCELLANEOUS

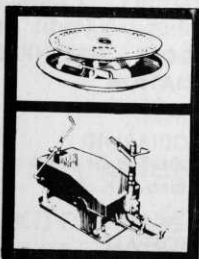
PROFESSIONALS AND GREENKEEPERS having stocks of used golf balls contact Sparkbrook Golf Ball Co., 295 Highgate Road, Stoney Lane, Birmingham, with a view to filling export orders.



What will he remember most about your course?

Will it be lush greens where his pitches stopped dead and his putts rolled true, and grassy fairways that were good to play from as well as walk on? It could be if you employ the forty years of irrigation experience of B.O.I.L. to keep your course in tip-top condition however dry the season

Post the coupon for details of the self-travelling sprinkler for fairway watering and "Pop-up" sprinklers for your greens.



The "Pop-up" is installed beneath the turf and can be mown over.

The Travelling Sprinkler evenly waters an area of almost an acre per setting.



B.O.I.L.

RAIN SYSTEMS

BRITISH OVERHEAD IRRIGATION LTD
UPPER HALLIFORD-SHEPPERTON-MIDDLESEX-ENGLAND

Please send me details of the B.O.I.L. Pop-up sprinklers and Self-Travelling sprinklers.

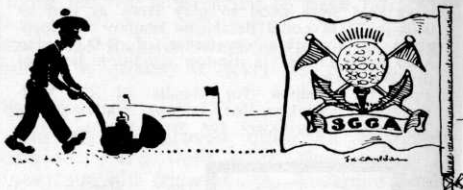
Name.....

Address.....

B.G.G.



The Ransomes Junior Quintuple Gang Mower pulled by an International Harvester Cub Tractor. This tractor is also useful for pulling golf ball harvesters on Driving Ranges.



THE SCOTTISH GOLF GREENKEEPERS ASSOCIATION

Chairman:

D. L. MACDIARMID
Royal Burgess Golfing Society
Barnton, Edinburgh, 4

General Secretary:

R. B. MOFFATT
71 Kelton Street, Glasgow, E.2

Open Draw

BY THE TIME YOU ARE READING this I hope you have sold the tickets which you have received and are sending to me for a further supply. The committee hope for a good return with all tickets sold.

Annual Outing

The outing this year will be held on Wednesday, 16th June, by courtesy of the Luffness New Golf Club. I am looking forward to a large attendance of all old and new members. A bus will be running from Glasgow and it is hoped to fill all seats which will cut the fare and reduce expense.

North Dance

I would once again like to thank Mr Milton and his Committee on behalf of all who travelled to Dundee for a very enjoyable night.



EDINBURGH

FIBREGLASS FLAGSTAFFS

GRASS COMBS

GOLF FLAGS

AND SWITCHES

STEWART & CO.,

SEEDSMEN LTD.

EDINBURGH, 2

S.G.G.A. EAST

Mr F. Cameron

THE ASSOCIATION REGRET THE sudden death of Mr F. Cameron, Head Greenkeeper at Baberton Golf Club.

BELOS GRAVELY Ltd.

introduce new light tractors

A new firm, recently established with headquarters at Seghill in Northumberland, promises to become prominent in tractor distribution throughout the country.

The firm is Belos Gravelly Limited, formed to take over distribution in Britain of Gravelly Tractors, a division of the Studebaker Corporation of America, as well as equipment designed by Belos of Sweden.

The vehicles for distribution are two and four wheeled light tractors with an extensive range of matched implements for grass cutting, cultivating, spraying, industrial haulage, snow ploughing, snow blowing, power brushing and other functions.

Plans

While at first activities will be limited to marketing, distribution and servicing, future plans include the manufacture of Belos equipment in Northumberland which promises to be a valuable boost to the area's unemployment problem.

The Belos system is of special interest to local authorities and parks committees, offering more than 30 attachments which give the tractors an all-round-the-year versatility.

Here are a few technical facts: Engine: one cylinder, four cycle, T-head type removable head. Air cooled by engine driven fan. Carburetor manufactured by Zenith. Custom built with two forward and two reverse gears. "Swiftamatic" gears available with four forward and four reverse. Two double-acting cone-type clutches, one as speed selector, one for forward and reverse. All power attachments indi-

vidually protected from shock by safety clutch. Height 28 inches (exclusively adjustable handles). Width 24 inches. Length 55 inches. Any technical problems can be expertly dealt with by Mr. D. Turner, Service Manager, at Seghill.

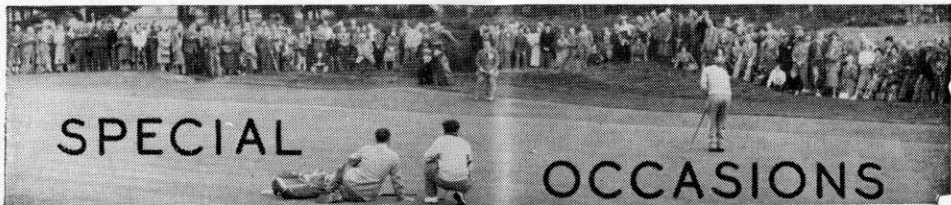
The four wheel Westchester tractor has a one-cylinder air cooled four cycle, overhead valves. Carter carburetor with one inch side draft. The engine is rated at 12 h.p. at 3,400 r.p.m. Overall length 74 $\frac{3}{4}$ inches. Width 32 inches. Height over steering wheel 37 $\frac{5}{8}$ inches. The body is manufactured from fibreglass-reinforced plastic.

SITUATIONS VACANT

BROCTON HALL GOLF CLUB, require experienced Greenkeeper, capable of managing groundstaff. Apply to Secretary, Brocton, Stafford, giving full particulars.

FIRST ASSISTANT GREENKEEPER required. Average earnings about £750 a year plus free house. Send details: experience, family, etc., to G. R. Young, Addington Court Golf Club, Featherbed Lane, Addington, Croydon, Surrey.

GREENKEEPER FULLY EXPERIENCED to take charge of ground staff of Golf Club. Salary up to £18 per week according to qualifications. The Halesowen Golf Club, The Leasowes, Halesowen, Nr. Birmingham.



- MAY** 4th North-West Section, Spring] Tournament and A.G.M., Wilmslow Golf Club.
 6th North-East Section, Spring Tournament, Whitburn Golf Club.
 6th Northern Section, Spring Tournament, Shipley Golf Club.
 6th] Midland Section, Spring Tournament, Gay Hill Golf Club.
 11th Southern Section Spring Tournament, Ealing Golf Club.
 12th East] Midland Section, Spring Tournament, Northamptonshire Co. Golf Club.
 27th S.G.G.A. North and Midland Section, Tournament, Craigie Hill Golf Club.
- JUNE** 1st Welsh Section Summer] Meeting and] A.G.M., Scouthern]down Golf Club.
 2nd Northern]Section visit to S.T.R.I., 1.45 p.m.]
 9th Southern Section A.G.M., Talbot Restaurant.
 16th] S.G.G.A., Annual Outing, Luffness New Golf Course.
 22nd] Midland Section, President's Match.
AUG. 9-10-11th Annual Tournament, Whitley Bay.
- SEPTEMBER** 14th Northern Section, Annual Match v. Sheffield Section, Scarcroft Golf Club.
 29th East Midland Section, Autumn Tournament, Birstall Golf Club.

Get on to GIBBS for

Ransomes

MOWERS

PLUS A SPECIALISED SERVICE

The best in every way; prompt supply of new machines, spares and accessories of all kinds; specialist advice on Ransomes mowers; regular maintenance by expert engineers . . .



The Ransomes 'Auto-Certes' Mk7 Motor Mower with attachable power driven Transport Wheels. Cutting width 18". 4-stroke engine. A fine mower giving the best possible finish to Golf and Bowling Greens, Croquet Lawns, Cricket Squares, etc.

Visit the Gibbs Stand at the Chelsea Show. 1] May 26/28



BEDFONT·MIDDLESEX

Phone: Feltham 5071



By Appointment to
Her Majesty
Queen Elizabeth II
Suppliers of
Agricultural Machinery
and Implements

SPECIALIST DISTRIBUTORS AND AUTHORISED REPAIR AGENTS FOR RANSOMES LAWN MOWERS

Mrs. Greenkeeper's

Own Corner

with Ann Mawson

Fish pie makes a nice change and fish is something you can obtain all the year round. This is nice for mid-day lunch or a change for supper.

You require:—1 lb. fish (cod or haddock)—2 small sliced onions—2 skinned and sliced tomatoes— $\frac{1}{2}$ pint potato water—pepper and salt to taste—1 lb. cooked mashed potato. Grease a pie dish and put in a layer of uncooked fish (after the skin and bones have been removed) add a thin layer of sliced onion and then a layer of fish alternately until all has been used, adding a little of the sliced tomato to each layer. Season the potato water

and pour over the fish, etc. Cover with mashed potato. Bake for 45 minutes. Regulo mark 4 or Electricity 375° F. The top should be a nice golden brown. This should serve 3-4 people.

Just a small hint to follow this recipe, When washing dishes that are fishy, put a little mustard in the washing up water, all smell and taste of fish will disappear.

Silver Cleaning

Now here is a simple method by which silver can be kept bright and unstained for a much longer period than is possible with the ordinary polishes. After cleaning and polishing in the usual way, moisten a soft cloth with a very little olive oil or a good brand of furniture cream and polish the article with this. Do not use too much of either the oil or the cream or a smeared effect will result and will quite defeat its own end. It will be found that the silver will not tarnish so quickly and the actual cleaning will be much easier, it also helps to preserve the silver and is particularly efficacious with articles kept out in a room for decorative purposes.

Happy polishing, until June . . .



"Now do you understand what I mean when I stress the importance of strong hands and a good grip!"

S.T.R.I. BOARD MEETS

The 14th A.G.M. of The Sports Turf Research Institute was held at Bingley on Monday, 26th April, under the Chairmanship of Mr Alan Sowden.

- (1) In the annual report for 1964, reference was made to:—
 - (a) Extensive grass variety trials laid down with a view to finding better and tougher grasses for sport.
 - (b) Continued trials with urea-formaldehyde fertilisers, fungicides and herbicides.
 - (c) *Advisory visits*—up in number by almost 10 per cent on previous year. Most European countries were visited. Furthest point was Mexico City to advise on the construction of a football pitch in the new Aztec Stadium. It is expected that this will be used during the 1968 Olympic Games.
 - (d) Inauguration of a *Building Fund* to help provide ultimately a solution to the accommodation problem.
 - (e) *Finance*: Income up 16 per cent but expenditure also up 14 per cent. A small surplus resulted, this being in keeping with a non-profit-making organisation. Surplus automatically ploughed back to further the objects.

(2) Message of loyal greetings sent to our Patron, H.R.H. The Duke of Edinburgh.

(3) Elections to office:—

President—His Grace The Duke of Norfolk.

Vice-Presidents—Sir Bracewell Smith, Mr Carl Bretherton,
Sir William Worsley, Mr R. B. Dawson.

Chairman—Mr Alan Sowden.

Vice-Chairman—Mr Carl Bretherton.

BUYERS' GUIDE

BUNKER DRESSER

SMALLHOLDERS UTILITIES SUPPLY CO., 183
Hammersmith Road, London, W.6.

CLINKER, ETC.

T. PARKER & SONS, Worcester Park, Surrey.

CONTRACTORS

GILLIAM & CO. Ltd., Purley, Surrey.
J. R. STUTT Ltd., Canford Cliffs, Bournemouth.

EQUIPMENT SERVICING

R. C. CRAIG, Ltd., 30 Aylmer Rd., London, W.12.
GROSVENOR ENGINEERING CO., Manningham,
Bradford, Yorks.
RELF & KENDALL, 406 Brighton Rd., S. Croydon,
Surrey.
T. PARKER & SONS, Worcester Park, Surrey.

FERTILISERS

CANNOCK AGRICULTURAL CO., Ltd., Cannock,
Staffs.
CARTERS' TESTED SEEDS, Ltd., Raynes Park,
London, S.W.20.
FISONS, Ltd., Harvest House, Felixstowe, Suffolk.
T. PARKER & SONS, Worcester Park, Surrey.
STEWART & CO., Seedsmen Ltd., Edinburgh, 2.
SUTTON & SONS, Ltd., Reading.

FUNGUS CONTROL

CANNOCK AGRICULTURAL CO., Ltd., Cannock,
Staffs.
CARTERS' TESTED SEEDS, Ltd., Raynes Park,
London, S.W.20.
MAY & BAKER, Ltd., Dagenham, Essex.
T. PARKER & SONS, Worcester Park, Surrey.
SUTTON & SONS, Ltd., Reading.

GOLF TEE MATS

UNIVERSAL MAT CO., Ltd., Tileyard Road,
London, N.7.

GRASS SEEDS

CANNOCK AGRICULTURAL CO., Ltd., Cannock,
Staffs.
CARTERS' TESTED SEEDS, Ltd., Raynes Park,
London, S.W.20.
T. PARKER & SONS, Worcester Park, Surrey.
STEWART & CO., Seedsmen Ltd., Edinburgh, 2.
SUTTON & SONS, Ltd., Reading.

GREENKEEPERS' TOOLS & COURSE EQUIPMENT

R. C. CRAIG, Ltd., 30 Aylmer Road, London, W.12.
W. HARGREAVES & CO., Ltd., "Sisis" Patent
Equipment, Macclesfield, Cheshire.
H. PATTISSON & CO., Ltd., Stanmore, Middlesex.
T. PARKER & SONS, Worcester Park, Surrey.
STEWART & CO., Seedsmen Ltd., Edinburgh, 2.

INSECTICIDES

CANNOCK AGRICULTURAL CO., Ltd., Cannock,
Staffs.
T. PARKER & SONS, Worcester Park, Surrey.

LEAD ARSENATE

F. KEEP, Ltd., 82-84 North End, Croydon, Surrey.
T. PARKER & SONS, Worcester Park, Surrey.

LOAMS & MANURES

T. PARKER & SONS, Worcester Park, Surrey.

MOWER ENGINEERS

RELF & KENDALL, 406 Brighton Road, S. Croydon,
Surrey.
T. PARKER & SONS, Worcester Park, Surrey.

MOWERS

BRADLEY'S, Leeds Rd., West Ardley, nr. Wakefield,
Yorks.
T. GREEN & SON, Ltd., Smithfield Ironworks,
Leeds, 2.
GROSVENOR ENGINEERING CO., Manningham,
Bradford.
LLOYDS & CO., Ltd., Pennsylvania Works, Letch-
worth, Herts.
T. PARKER & SONS, Worcester Park, Surrey.
H. PATTISSON & CO., Ltd., Stanmore, Middlesex.
C. H. PUGH, Ltd., P.O. Box 256, Acto Works,
Birmingham, 9.
RANSOMES, SIMS & JEFFERIES, Ltd., Orwell
Works, Ipswich, Suffolk.
HAYTERS (SALES) Ltd., 34 Spellbrook Lane, Bishop's
Stortford, Herts.
E. THOMAS & CO. (Oswestry) Ltd., (Dept. S.6)
Whittington Rd., Oswestry, Shropshire.

SEA SAND

T. PARKER & SONS, Worcester Park, Surrey.

SPRAY EQUIPMENT

T. PARKER & SONS, Worcester Park, Surrey.
PRESSURE JET MARKERS Ltd., 152 The Arches,
Stamford Brook, London, W.6.
B.O.I.L. RAIN SYSTEMS, Upper Halliford, Shepp-
ton, Middlesex.
F. W. BERK & CO., Ltd., Berk House, 8 Baker Street,
London, W.1.

TRACTORS

T. GREEN & SON, Ltd., Smithfield Ironworks,
Leeds, 2.
W. HARGREAVES & CO., Ltd., "Sisis" Patent
Equipment, Macclesfield, Cheshire.
T. PARKER & SONS, Worcester Park, Surrey.
H. PATTISSON & CO., Ltd., Stanmore, Middlesex.

TURF AERATING APPLIANCES

W. HARGREAVES & CO., Ltd., "Sisis" Patent
Equipment, Macclesfield, Cheshire.
T. PARKER & SONS, Worcester Park, Surrey.
H. PATTISSON & CO., Ltd., Stanmore, Middlesex.

WEED CONTROL

MAY & BAKER, Ltd., Dagenham, Essex.
T. PARKER & SONS, Worcester Park, Surrey.

WEED CONTROL SPRAYING

T. PARKER & SONS, Worcester Park, Surrey.

WORM KILLER

CARTERS' TESTED SEEDS, Ltd., Raynes Park,
London, S.W.20.
T. PARKER & SONS, Worcester Park, Surrey
SUTTON & SONS, Ltd., Reading.

ENQUIRY BUREAU.—The Editor desires to point out that he will be pleased to answer enquiries from our readers, and forward to them the name and address of the manufacturer or supplier of any particular proprietary article or product used in the construction, maintenance and upkeep of a golf course. Enquiries are coming in from greenkeepers asking for such information. They may, for example, know the trade name of the article or product they wish to purchase, but may not be conversant with the name and address of the actual manufacturer or supplier. The Enquiry Bureau will gladly supply this information, and thus enable the greenkeeper to contact the manufacturer or supplier direct.

TO MANUFACTURERS.—In order that our information may be kept constantly up to date, manufacturers or suppliers are requested to forward their latest trade lists, catalogues, and any other confidential information regarding their products. By so doing the Bureau will be able to function to the mutual benefit of all concerned.

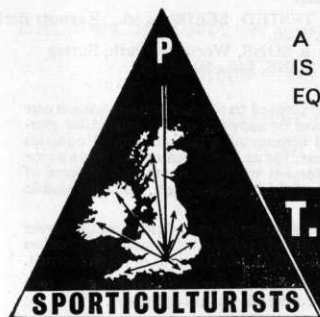
TRADE REVIEWS.—The Editor will be pleased to arrange to devote space in our editorial columns to a review of our advertisers' products, etc. Will advertisers please forward details for this purpose.

PARKERS

*The
best people
in the
field*

Parkers are the people to consult whenever any problem in turf management is encountered, for they are **specialists in every department** of ground maintenance and in the operation of all modern equipment. Parkers, too, are indisputably the largest stockists of turf management equipment in the United Kingdom. Call in Parkers whenever a problem arises.

- * Blenders of "**Verdant**" grass seeds and fertilizers
- * Manufacturers of "**Perfecto**" golf-course equipment
- * Specialist London distributors and approved repairers for Ransomes and Hayters
- * "**SISIS**" main distributors
- * New Nets, Netting repairs and re-treatment in conjunction with **Proctor Nets Ltd.**



A SPECIALIST SPARES AND MAINTENANCE SERVICE IS AVAILABLE FOR MOWERS AND ALL TURF EQUIPMENT FROM OUR MODERN WORKS.

T. PARKER & SONS (TURF MANAGEMENT) LTD
WORCESTER PARK, SURREY
TELEPHONE: DERWENT 7791 (6 LINES)