

MARCH

1965 1/-

*The
British Golf*

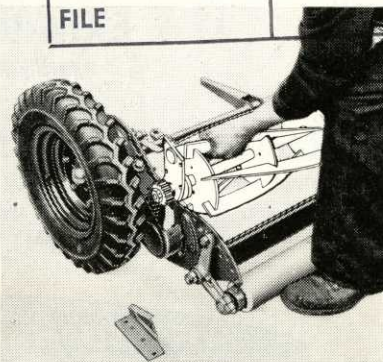
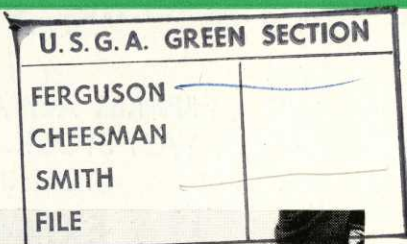
Greenkeeper



BY APPOINTMENT
TO HER MAJESTY THE QUEEN
MANUFACTURERS OF AGRICULTURAL
& HORTICULTURAL MACHINERY

**Ransomes
GANG MOWERS**
have easily removable
cutting cylinders—
SAVES SERVICE TIME
ADDS CUTTING TIME

Removal and replacement of cutting cylinders on Ransomes Gang Mowers can be done by any member of your ground staff without dismantling the units and your mowers can get to work again in double-quick time!



*Ask your Area Ransomes Sales and Service
Distributor for a demonstration or write
to the address below:*

RANSOMES SIMS & JEFFERIES LTD · IPSWICH

Square dealing in mowers



Those whose business it is to keep the mowers cutting will readily appreciate the kind of service offered by Relf and Kendall.

SPARES ALWAYS AVAILABLE FROM OUR VAST STOCK. FLEET TRANSPORT TO GIVE YOU IMMEDIATE DELIVERY.

IT'S EXPERIENCE THAT COUNTS

Officially Appointed Service Depot for

Ransomes

Authorised service repair agents. Sales, Spares and Service.

Villiers & JAP

Industrial and Agricultural Engines
Main agents and distributors to
Briggs & Stratton (Engine Manufacturers)



Main agents and distributors for Clinton Engines. Spare parts and service exchange assemblies now available from stock.

REL F AND KENDALL

406 BRIGHTON ROAD, SOUTH CROYDON, SURREY. CRO 0578

11 STATION ROAD, NEW BARNET. BARNET 8228

Official London Area Distributors to Ransomes' Sims & Jefferies for specialist machines.



Agents for Dennis, Shanks, Greens, Atco, Lloyds and Allen Motor Scythes.

THE BRITISH GOLF

GREENKEEPER

HON. EDITOR : F. W. HAWTREE



FOUNDED 1912

PUBLISHED MONTHLY FOR THE
BENEFIT OF GREENKEEPERS,
GREENKEEPING AND THE GAME
OF GOLF BY THE BRITISH GOLF
GREENKEEPERS ASSOCIATION

President:

CARL BRETHERTON

Vice-Presidents:

SIR WILLIAM CARR
R. B. DAWSON, O.B.E., M.S.C.,
F.L.S.
GORDON WRIGHT
F. W. HAWTREE
S. NORGATE
I. G. NICHOLLS
F. V. SOUTHGATE
P. HAZELL
W. KINSFY
R. C. AINSCOW

Chairman:

H. G. SHEPPARD
Weston-Super-Mare G.C.

Vice-Chairman:

J. SIMPSON
Ponteland G.C.

Hon. Secretary & Treasurer:

C. H. DIX
Addington Court G.C.
Featherbed Lane
Addington, Croydon, Surrey

Executive Committee:

Carl Bretherton (President),
G. Herrington, J. G. Bryan,
E. H. Benbow, S. T. McNeice,
J. Parker, J. Simpson,
A. A. Cockfield, V. Crabtree,
E. W. Folkes, D. G. Lord

Hon. Auditors:

Messrs. SMALLFIELD RAWLINS and
Co., Candlewick House, 116/126
Cannon Street, London, E.C.4

Hon. Solicitor:

R. A. BECK
21 Lime Street, London, E.C.3

The Association is affiliated to the
English and Welsh Golf Unions.

No. 240 New Series

MARCH 1965

THE GOLF WIDOW'S LAMENT

*Chasing that little ball around
Seemed a harmless sport.
But now I'm rather worried
By the latest news report.**

*While we stay home and baby-sit
Deserted by the daddies—
Oo la la! Do you suppose
The cads will chase the caddies!*

* "French Girl Caddie Arrives To Teach
At Golf Club."

—JEAN LOVERING.

MARCH CONTENTS

Page	3	TEE SHOTS
	4	MANY NEW COURSES IN AMERICA
	8	THE PERIODIC REPORT
	12	VIEWPOINT
	14	SPECIAL OCCASIONS
	15	SECTION NOTES
	18	S.G.G.A. NEWS
	19	CARTOON
	20	MRS. GREENKEEPER

EDITORIAL AND ADVERTISEMENT OFFICES: Addington Court Golf Club, Featherbed Lane, Addington, Croydon, Surrey. Telephone: SANDerstead 0281. SUBSCRIPTION RATE: 14/- for 12 issues post paid. Published during the first week of each month. LATEST COPY DATE: 8th of month prior to insertion. All rights reserved. Reproduction of original articles and photographs in whole or in part is prohibited. This Magazine shall not, without the written consent of the Publishers first given, be re-sold, lent, hired out, or otherwise disposed of. *Contributions and photographs of interest are invited.*

TO INSERT A CLASSIFIED ADVERTISEMENT, write to the Advertisement Manager at the above address. The rate is 6d. per word (minimum 15 words). Box Number, 1/6 extra. Remittance must be sent with order. Please state number of insertions required and write advertisement in block letters. Advertisements will be inserted in the first available issue.

ONE DOWN AND FOUR TO GO



5000 Square Yards
ACCURATELY
covered in two hours



For perfect appearance and consistent performance turf needs regular nutrition. Fertilizers and weed-killers can only give maximum benefit when they are applied regularly and ACCURATELY.

The Quillot 39" Estate Model ensures accurate distribution of most dressings, at the appropriate rates, from $\frac{1}{4}$ —8ozs.

per square yard, or grass seed for sowing or re-seeding. 39" spread for easy coverage; towbar adjusts for manual operation or power towing. Hopper capacity approx. 112 lbs. (dependent on the material being spread).

Price £42 ex works. Diffuser £3 12 6

Alternative meter rollers available.

QUILLOT LIMITED,

Harvest House, Felixstowe, Suffolk. Tel: Felixstowe 4444

TEE SHOTS



by the Editor

We are sorry to hear that Tom Chamberlain, Head Greenkeeper at Highgate Golf Club, has been in hospital. We wish him a speedy recovery and send our best wishes.

* * *

Unfortunately owing to uncertain health, Mr. A. J. E. Cook, Lawn Mower Sales Representative in the East Midlands for Messrs. Ransomes, Sims & Jefferies, retired at the end of 1964. In future that territory will be covered by extending the areas of other representatives.

* * *

The Editor, "The British Golf Greenkeeper".

Dear Sir,

We are writing to apologise for any false impression given to your readers in your January issue by your publishing our News Release on the visit of The Links Superintendent of St Andrews to Ipswich.

Inadvertently we gave the impression that they had "insisted on standardising on Ransomes mowers for all cutting work". We are aware that other equipment is in use at St Andrews and apologise to any other manufacturers of grass cutting equipment who have been caused embarrassment by our statement.

Yours faithfully,
Ransomes, Sims & Jefferies, Ltd.

R. C. CRAIG

AND CO. LTD.

SPECIALISTS IN THE REPAIR AND
MAINTENANCE OF ALL TYPES OF MOWERS

★ Agents for: RANSOMES, SIMS &
JEFFERIES Ltd.

★ LLOYDS & Co. Ltd.
WEBBS LAWN MOWERS

★ Distributors: DENNIS BROS Ltd.

★ GANG MOWERS FOR HIRE

We will gladly call on you to advise on your grass cutting equipment or arrange demonstrations. Ring us now.

★

**153 Arch Stamford Brook
Station, LONDON, W.6.**

RIVERSIDE 5415

Many New Courses in America

By
JOHN STOBBS

Since it is reckoned to cost something around £130,000 to build a new golf course in America nowadays — and that doesn't begin to cover the cost of the clubhouse and other buildings — it is really remarkable how great is the flood of new courses all the time over there.

Over here only the first faint signs of a real expansion in the numbers of courses are making themselves felt. Still, any expansion at all is good for the prospects for greenkeeping as a way of life; so maybe the trend is worth watching, with an eye to its possible ultimate effects.

One wholly good thing about the way golf has developed in America is the vastly more liberal availability of the game to all sections of the community. Pretty well any sizeable town has its municipal golf courses, and indeed by now just about half the courses in America are open to the public on roughly the same basis — if nothing like as cheaply — as our tiny minority of public courses over here.

The reason for the discrepancy between the ordinary man's opportunities for golf in these islands of private clubs, and in America, seems to be simply that far more people in America are prepared, and can afford, to pay a bit more for their golf. There, over a third of all new courses are being built not by the Municipalities or private club themselves, but by speculative builders, "real estate developers" as they call them there; and the reasons for building these new courses seem to be as much commercial as recreational.

Package Deal

Often there's a sort of package deal with the Municipality. The Municipality specifies the type of course it wants and how it's to be run, and sometimes puts up the cost of the land. The "Real Estate" man buys the rest, builds the course with municipal support and encouragement, and relies for his profits largely upon the value of the houses he builds around it. Those actually adjoining the course fetch a substantially higher price than those which don't.

The whole thing is worked out on a very thorough assessment of how many people live, and are likely to live in future, within an area up to 20 miles from the chosen spot. (Americans look on a 15 mile drive much as we look on a three mile one.) The developers take a pretty close look, too, at the prospects of any other "Daily Fee" courses within range. They also analyse local average income per head, and how fast prosperity is growing in the area.

Sometimes developers miscalculate, and new courses fail. But in a land where the population has increased by a third since the last war, the general situation is on their side.

Investments

If things look encouraging, they reckon to lay out over £30,000 on about 200 acres of land, over £50,000 on building the course, over £15,000 on a course-watering system, and around £7,000 each on a course architect and on course equipment. Financial backing may come from banks, insurance companies, or partly from Federal and State development agencies.

It is, in fact, all very much a reflection of the general American attitude to things: finding ways of expanding the demands of ordinary people for the ordinary things of life. As one writer puts it: "Any real estate developer needs the golf course to promote area traffic. The completed golf course creates an area of stability and an atmosphere of vibrance which is considered vital to the home-selling industry."

BY APPOINTMENT TO



HER MAJESTY THE QUEEN

SEEDSMEN
CARTERS TESTED SEEDS LTD.

IMPROVE YOUR TURF WITH **CARTERS GRASS FERTILISERS**

CARTERS SPECIAL GRASS FEEDER No. 1

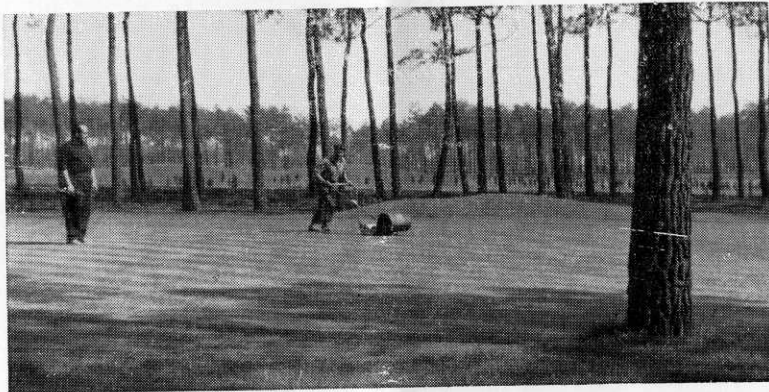
An excellent steady feed for Spring and Summer use on Golf and Bowling Greens, Tennis Courts, etc. Produces a healthy growth and good colour to the finest turf. Apply evenly at 2 oz. per sq. yd. during damp weather, or water in. For turf in poor condition, repeat after one month.

1 cwt. 58/6; 5 cwt. at 57/3 per cwt.; 10 cwt. at 56/- per cwt.;
Per ton £53 10s. 0d.

CARTERS OUTFIELD AND FAIRWAYS FERTILISER (Spring/Summer)

Ideal for Spring renovation of Winter-Playing Pitches, Golf Fairways, and other large areas of grass. Apply at 5 cwt. per acre, preferably during damp weather.

1 cwt. 45/-; 5 cwt. at 43/9 per cwt.; 10 cwt. at 42/6 per cwt.;
Per ton £40 0s. 0d.



Full details of Grass Seeds, Fertilisers and Maintenance Equipment are now available in our "Spring Price List", post free on request

The 1965 Edition of our illustrated booklet "Treatment of Golf Courses and Sports Grounds" free on request

Carters
TESTED SEEDS LTD

**GOLF COURSE ARCHITECTS
AND
GRASS SEED SPECIALISTS**

RAYNES PARK, LONDON, S.W.20

It isn't, in fact, all done for the love of golf, or even for the sake of giving more people a chance to play it!

Be that as it may, the resulting expansion in golf is certainly doing the greenkeeping profession over there nothing but good. The University of Massachusetts now offers scholarships to "High School" golfers planning to take up turf management as a career; and everywhere the chances for the ambitious young "Course Superintendent" are the wider for the general situation.

Meanwhile the pure demand for golf there presses to such an extent that the experiment of floodlighting whole courses, first tried out 40 years ago and abandoned, has been resuscitated. Tall Pines, a private club near Philadelphia, started it in autumn of 1963. Louisquisset, a public course on Rhode Island, followed — on the general theory that although only 50 per cent of American courses are open to the public in general, over three-quarters of American golfers play on them. The

lighting system used is a 1,000-watt mercury floodlight developed by General Electric. It gives lighting about five times the strength of ordinary American street lighting for tees and greens, and about half that brightness through the green. These two courses both found that special nightplay green fees more than covered the costs on setting up and running the lights; and other courses have been following in their wake.

Way Ahead !

It all looks a long way ahead of anything we have yet — or perhaps want — over here. By no means all our public courses are full up during weekdays, especially in winter. Would more people want to play in the evening after work if courses were floodlit for them?

Not for a year or two yet perhaps. After all, we're only just persuading the average municipal council that it's worth while even to think about providing a public course at all.

From Suttons-with care

FOR SPRING RENOVATION

Suttons No. 23 mixture of grasses for tees 3/- per lb. 300/- per cwt.

Suttons, of course, are able to supply a full range of excellent mixtures for *greens, approaches, fairways*, etc. These consist of the finest strains, perfectly blended and economically priced. Full details and prices on request.

FOR SPRING FEEDING

Suttons 'Greensward' fertilizer—unequalled for use on all fine turf. Derived from high-grade organic materials (almost 50%). Ensures a *gradually available* supply of plant nutrients. Apply 2 oz. per square yard in Spring. May be used at lighter rate of application as tonic dressing during summer.

1 cwt. 69/6

5 cwt. @ 68/6 per cwt.

10 cwt. @ 66/6 per cwt.

20 cwt. @ 64/6 per cwt.

Suttons 'Fairward' fertilizer—a most economically priced, chemically balanced fertilizer, specially prepared for use on fairways. Apply 5 cwt. per acre in Spring.

10 cwt. @ 37/9 per cwt.

20 cwt. @ 37/- per cwt.

40 cwt. @ 36/- per cwt.

80 cwt. @ 34/- per cwt.

120 cwt. @ 31/6 per cwt.

ALSO USE SUTTONS MOSS DESTROYER, WORMKILLERS AND FUNGICIDES

Grass Advisory Service—available to every golf secretary and greenkeeper. Free advice by 'phone or letter; visits of inspection by experts at moderate charges.

Suttons

Sutton & Sons Limited · Reading · Berkshire · Tel: Reading 61151



ATCO

FOR THE GOLF COURSE — *and for life!*

PARTICULARLY

THE 20" SPECIAL

FOR 'SUPERFINE' MOWING OF GREENS

This 'self-contained' motor mower has become recognised as the best machine of all for the maintenance of the perfect finish required for the Greens.

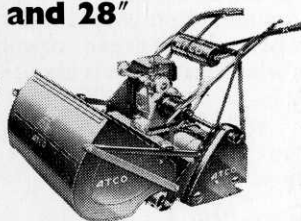
The specification is complete and will maintain peak performance — for life.

£90



THE 24" and 28" ROLLER MODELS

Specially designed for mowing large areas of grass such as the approaches to the Greens



24"-£99 28"-£160

and perhaps most important of all **IMPECCABLE SERVICE**

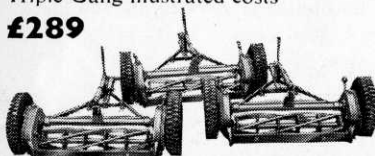
Everywhere there is an ATCO Engineer attached to an ATCO owned Branch ready to advise on any problem in connection with grass cutting.

*** DEMONSTRATIONS OF ANY ATCO CAN BE ARRANGED TO SUIT YOU OR YOUR GREENS COMMITTEE**

ATCO GANG MOWERS for the FAIRWAYS

Unique—because individual units can be 'ganged' in multiples of one to nine units. Three models are available The Triple Gang illustrated costs

£289



CHARLES H. PUGH LIMITED
P.O. Box 256 Atco Works, Birmingham 9

THE PERIODIC REPORT

By PAUL N. VOYKIN

IT'S a long way from Saskatoon, Saskatchewan, to Chicago, and even further to San Diego. But the longest distance we all must travel is the road toward becoming successful green superintendents.

After four years of experience in Canada, I continued my apprenticeship at Olympia Fields CC in Chicago. From there I went to another private club and, three years later, made a change to a private club in Chicago's north side where greater challenges and opportunities were offered. After a short time there, I asked myself, "How can I improve my executive position as green superintendent of this million dollar plant?" I wondered what some of the highly respected superintendents in my area did to attain their success. What keys to success did they possess?

I talked with these outstanding men and learned that one of the keys in their administration was submitting periodic reports to the green committee; and this is what this forum is about—Management Aids.

I will illustrate what I mean by giving you excerpts from some of my own monthly reports.

Case No. 1

This is from my February, 1962 report on weather:

"*Weather*—Fifty-one inches of snow has fallen to the end of February. The record snowfall was in 1952 with a total of 66 inches. We may catch up yet! The record rainfall we had last fall, combined with the almost record snowfall this winter, makes for a very wet golf course this spring."

Case No. 2

Here is the weather report from the following month of March:

"*Weather*—We have just experienced one of the worst winters on record,

snow-wise. It started on December 9th, and kept accumulating until 60 inches fell, and it wasn't until March 23rd that ground finally began to show, along with something else, winter-kill. This is a more serious condition than snow-mold, and is usually the result of poor drainage."

Case No. 3

Now, I will present a complete report to give you an idea of how they are set up. Here is my June report:

"*To:* Mr John Doe, Green Chairman, and members of the Green Committee.

"*Subject:* June Progress Report for the Grounds Department.

"*Weather*—The weather has been dry, with seven days in the nineties, which is normal for June. We watered 20 out of 30 nights and frequently in the mornings.

"*Greens*—The greens have made an excellent comeback, and all have the same color and putting quality. The exception is the 17th green, which is being cut higher because, as yet, the roots of the newly laid sod have not made a strong contact with the soil. Until the roots penetrate deeper into the soil and make the soil more friable, the green will be on the hard side.

"*Tees*—All the tees have been fertilized with 20 pounds per 1,000 square feet of 5-5-0. We are letting the grass around the tees get longer for the hot weather. The area around the tees has been cut at $\frac{7}{8}$ of an inch. We will now cut it at $1\frac{1}{2}$ inches. This setting will make the aprons around the tees look much better.

"*Fairways*—I believe we are one of the few clubs in Chicagoland that has clover-free fairways; in fact, at this time, we are free of any weeds. Clover is one of the most difficult weeds to get rid of, and the chemicals used to eradicate it are very potent. By carefully making tests on plots and spraying only on cool days, we have accomplished complete eradication of this weed with no damage to the grass."

I then go on to talk about irrigation, construction, and end up with miscellaneous items under title of "Porridge

Talk about perfect turf?

Walk about perfect turf!

with

'CLOVOTOX' Selective weedkiller for controlling clovers and other weeds in turf.

'DICOTOX' Showerproof selective weedkiller for economical general weed control in turf.

'DICOTOX' EXTRA Four times as concentrated as 'Dicotox'.

'SUPERTOX' 30 Broad spectrum selective weedkiller for turf. Kills weeds *and* clovers.

'MERSIL' Concentrated turf fungicide with rapid activity. In powder form for application as a suspension in water.

'MERFUSAN' Turf fungicide with similar range of action to that of 'Mersil'. In powder form for dry application.

DDT CONCENTRATE Insecticide for the control of turf pests including leatherjackets.

MERCURY BICHLORIDE Controls worms.

Names quoted thus 'Clovotox' are trade marks the property of May & Baker Ltd.

Talk to

MAY & BAKER LTD

DAGENHAM ESSEX

Tel: DOMinion 3060 · Exts. 342 and 359

**The people with turf
protection know-how**

M&B BRAND PRODUCTS



HA2872

Potpourri." Here are a few items from Porridge Potpourri:

- "1. If everybody we talk to adamantly informs us that they repair their ball marks, and those of five others besides, who are the golfers who do not? The greens are becoming very pock-marked going into the summer.
- "2. We have played several golf courses, including two public fee clubs this season, and our course takes first prize for litter! Chocolate and cigar wrappers, golf ball containers, cigarette packages and Pepsi containers were all over during the season!
- "3. Ladies' day was a success with compliments to the Grounds Department for using potted begonias in place of tee markers.
- "4. Briarwood hot rod! Driving through and up our highest sand traps in a golf cart!
- "5. Some goldfish sighted on No. 10 lake. If they get large enough through the summer, they will take care of our algae problem.
- "6. The duck hens are nesting quietly by No. 3 lake, and we have erected a sign that says 'Quiet! Duck Maternity Ward!'"
- "7. I wish the golfers would yell 'FORE' when the greensmen are working in the traps or are in the way. Some of the crew have been hit because no warning was sounded . . . we don't want anyone hurt."

I generally set up my reports under these headings: WEATHER, GREENS, TEES, FAIRWAYS, and end with PORRIDGE POTPOURRI. Sometimes there are additional headings, such as: ROUGH, TRAPS, LANDSCAPE, or CONSTRUCTION.

Why Reports?

Now, some of you may ask, What does this accomplish? Why go to all the trouble?

First, it is a summary of what was done during the month. Second, it is a catalog of weather conditions and maintenance procedures that can be referred to whenever necessary. Third, a copy of this report is given to the golf pro and the manager to keep them informed as to what has been done in my department for the month, and to give them a scheduled forecast of some of the future projects.

Most important, it is a means of educating my green committee members about what is going on each month. The reports explain some of the fundamental steps we take to give the members a top-notch golf course. And the committee, now well informed, works with me in trying to promote understanding among the more interested club members regarding our operations. This is of great assistance to me.

Perhaps the real reason a person wants to improve himself can be better explained in something I read recently in the Wall Street Journal under the heading "What is an Executive?"

What is an Executive?

"He is called by many names: the boss, top management, head man, chief, or just plain Tom or Bill. Each day he lives with problems and every day he's on the lookout for solutions. A good executive is understanding, fair, a cajoler, co-ordinator, arbitrator, listener, and decider. In addition he is efficient, hard-working, patient, impatient, aggressive, and ambitious for himself and his club.

"His constant companions are work, too little time, budgets, inventory, ideas, materials and equipment, employee relations, and company dollars. No one knows better than he the meaning of pressure. He is second-guessed, loved, appreciated, tolerated, respected, blamed, praised, understood, misunderstood, needing and needed, but never ignored.

"The executive knows the loneliness of management. For there comes a time for decision. Despite all the counsel from associates above and below, it is he who says YES or NO. He can't afford to err in judgment. Whether it be selection of personnel or the kinds of materials or equipment he purchases, he is always responsible.

"The good executive is the voice for his club . . . both written and spoken. Thus, he is reader, student, speaker, moderator, writer . . . as well as the subject of a speech or article. He is the product of business and means business. What he does can produce a ripple or tidal wave of activity.

"For this he has learned . . . To get a better job, keep *doing* a better job. That's how executives are made."



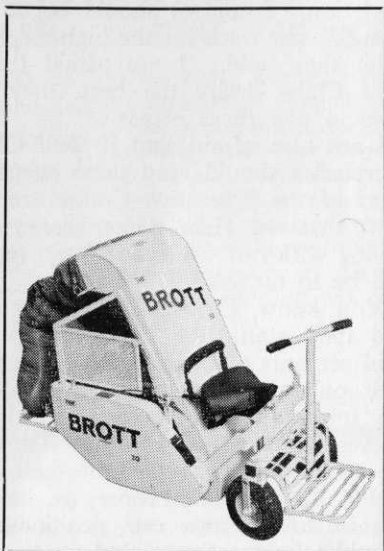
cut the lot with a **BROTT**

BROTT 20 - A REAL ADVANCE IN GRASSCUTTING TECHNIQUE

The day you get a BROTT will be the day you discover what a real grasscutter will do. With its unique cutting action it cuts the finest lawns or the roughest orchard grass — 3 speed and reverse to deal with all conditions — backwards or forwards. It collects leaves and rubbish; maintenance is negligible. It cuts and rolls up to $\frac{1}{4}$ acre per hour and collects the grass into large easily handled bags — or into a trailer drawn behind — or spreads it behind as a mulch. The operator rides in comfort and safety all day long and it has all-year round usage. Instantly adjustable cutting height. Every grasscutting advantage in one magnificent machine. Send for full details today — and for the name of your local authorised dealer.

Manufactured solely by the patentees:
Edward Thomas & Co. (Oswestry) Ltd.,
(Dept. S6), Whittington Road,
OSWESTRY, SHROPSHIRE.

Tel: 3271 (3 lines)



VIEWPOINT

West Lodge,
West Road,
St George's Hill,
Weybridge,
Surrey.

Sir,

I am writing this letter to you hoping to hear other members' views in the matter. Reading my January Journal, I find on the last page a scale of wages given as a guide (general of course) to us members. Although I am fully aware of the difficulties and varying conditions in different parts of the country, I do feel the Executive Committee have *not* been very generous in their suggestions for the Greenkeeper with £12 or the Assistant Greenkeeper with £13 10s. As the average wage of the working man will be £17 per week any moment now, I consider the suggested £12 will not be any help to Head Greenkeepers in getting new staff. I should have thought £13 or £14 a better offer.

As for the Assistant Greenkeeper, I think that he also at times has certain responsibilities to hold in his job. That being so, I should think at least £14 to £16 should be his wage.

I emphatically say that all Head Greenkeepers' wages (including accommodation, of course) should be no less than £20 per week for the high responsibility they hold. I am afraid that if Golf Clubs desire the best, they will have to pay these wages.

I am also afraid that if Golf Clubs' Secretaries should read these suggested rates of the Executive Committee, the fight that we Head Greenkeepers are having with our Clubs for more money will be to no avail.

You know, Sir, Head Greenkeepers and their staff have been very poorly paid servants of their Clubs in the past. It is only now that clubs are realising the importance of these men, simply because they are hard to get. They are the most important part of their staff and I am sure that now we have a chance to improve our positions, we should take great care that we use this opportunity. When all is said and

done, everything, yes everything, is going up in price, so why shouldn't golf? It is very cheap as an all the year round sport. I hope I have not said anything to upset anyone, but if we are going to suggest anything, let's have the guts to say something big.

Sincerely,

C. R. COOKE.

The Hon. Editor, F. W. Hawtree,
c/o *The British Golf Greenkeeper*,
Addington Court Golf Club,
Featherbed Lane,
Croydon,
Surrey, England.

21st January 1965.

Dear Sir,

In the January issue of *The Greenkeeper*, I was delighted to be mentioned in the excellent article by Mr. John Stobbs, "Chemicals or Compost". The trend here has been until recently, to do less and less top dressing, but since those two years, that knocked us younger experts "off the know it all" pinnacle, we have found that the old way used by older and wiser superintendents is still the best.

I am enclosing a speech that I made in San Diego a few years ago; you may find it interesting.

Yours truly,

PAUL N. VOYKIN,

Greens Superintendent.

We were extremely pleased to hear from Mr. Voykin, Superintendent at the Briarwood Country Club, Deerfield, Illinois. The excellent paper which he read at San Diego appears on page 8.

L. F. Millar, Head Greenkeeper at Moor Park Golf Club, has been carrying out big improvements on the High course in the past winter. New bunkers have sprung up, others have disappeared and the course will be in excellent shape for the Esso Tournament on 21st-24th July. The Artisans' Tournament and Championship also go to Moor Park in July on 5th, 6th and 7th and we can expect to see at least one member of the Millar family amongst the leaders.

In every field of grass growing



You'll find
**FISONS
PARKS &
SPORTSGROUNDS
PRODUCTS**
PLAYING THEIR PART

in Industrial Sportsgrounds, Municipal Playing Fields & Public Parks.

FERTILIZERS

Years of study and experimentation at our own Research Station have resulted in the production of a most comprehensive range of Turf Fertilizers - Fisons PS Range - each of which has its own specific application.

WEEDKILLERS

For selective and total weed-killing and for combined feeding and weedkilling, Fison's have evolved what is probably the most successful combination of weed control products available today.

PEAT PRODUCTS

The rich, humus forming properties of Humull Lawn Peat are essential for promoting good root development and maintaining the growth of fine grasses. Specially selected grades of Peat are also available for soil improvement, shrub planting, mulching and composts.

FISONS HORTICULTURE LIMITED

PARKS AND SPORTSGROUNDS DEPARTMENT, HARVEST HOUSE, FELIXSTOWE, SUFFOLK

**FREE
ADVISORY
SERVICE**

Fisons Turf Advisory Service will gladly give practical advice on any problems concerning Turf Maintenance. For a free visit by a local Turf Specialist, write to the above address.



MARCH

8th North-West Section, Lecture.
 10th Southern Section, Quiz, Talbot Restaurant.
 11th East Midland Section, Lecture, Blue Boar Hotel.
 18th North-East Section, Lecture, Carlisle Hotel, Westgate Road, Newcastle.
 22nd Northern Section, Lecture, Market Tavern, 7.15 p.m.
 25th Sheffield Section, Meeting.
 25th North-East Section, Film Show, Crown Hotel, 7.30 p.m.
 26th Southern Section, Annual Dinner.

APRIL

6th East Midland Section, Lecture, Central Tavern.
 7th Welsh Section, Spring Meeting, Dinas Powis Golf Club.
 22nd S.G.G.A. West Section, Spring Outing, Old Troon Golf Club.

MAY

6th Northern Section, Spring Tournament, Shipley Golf Club.
 6th Midland Section, Spring Tournament, Gay Hill Golf Club.
 12th East Midland Section, Spring Tournament, Northamptonshire Golf Club.
 27th S.G.G.A. North and Midland Section, Tournament, Craigie Hill Golf Club.

JUNE

16th S.G.G.A., Annual Outing, Luffness New Golf Course.
 22nd Midland Section, President's Match.

SEPTEMBER

14th Northern Section, Annual Match v. Sheffield Section, Scarcroft Golf Club.
 29th East Midland Section, Autumn Tournament, Birstall Golf Club.

Get on to GIBBS for Ransomes MOWERS

PLUS A SPECIALISED SERVICE

The best in every way; prompt supply of new machines, spares and accessories of all kinds; specialist advice on Ransomes mowers; regular maintenance by expert engineer . . .

The Ransomes 'Auto-Certes' MK7 Motor Mower with attachable power driven Transport Wheels. Cutting width 18". 4-stroke engine. A fine mower giving the best possible finish to Golf and Bowling Greens, Croquet Lawns, Cricket Squares, etc.



BEDFONT·MIDDLESEX

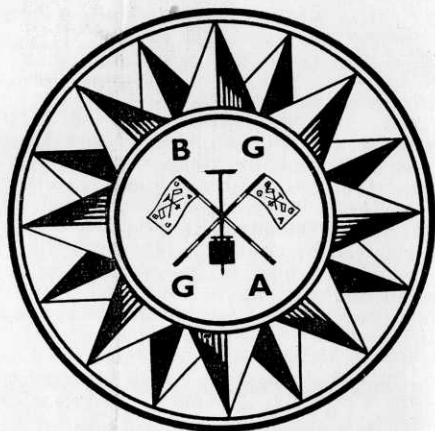
Phone: Feltham 5071



By Appointment to
Her Majesty
Queen Elizabeth II
Suppliers of
Agricultural Machinery
and Implements

SPECIALIST DISTRIBUTORS AND AUTHORISED REPAIR AGENTS FOR RANSOMES LAWN MOWERS

News



from the Sections

EAST MIDLAND

Chairman:
F. FROST
(Derby G.C.)

By S. T. McNeice
Hon Secretary:
40 Edward Road
Clarendon Park, Leicester

Section Tournaments

THE FOLLOWING ARRANGEMENTS have been made for the section's 1965 tournaments. Spring — the annual Spring Tournament will be held at the Northamptonshire Country Golf Club, Chapel Brampton, on Wednesday, 12th May — an 18-hole medal event. Autumn — the annual Autumn Tournament will be held at the Birstall Golf Club, Leicester, on Wednesday, 29th September — this will be 18-hole bogey. Further details will appear in the Journal in due course.

SOUTHERN

Chairman:
W. E. MOORE
(Romford)

By W. Mason
Hon Secretary:
18 Albert Road, Hendon, N.W.4.
Tel.: SUNnyhill 0245

Lecture

OUR FEBRUARY LECTURE GIVEN by Mr. Barlow of Messrs. F. W. Berk & Co. Ltd., on the various kinds of mosses and their control, was very well attended and proved very interesting with a number of questions being asked and answered.

Future Lecture

As stated in the February Journal our last

lecture will be in the form of a Quiz, with the usual Quiz Master Mr. J. K. Glass in the chair. Bring along your problems for all to be debated.

Dinner Tickets

I now have Dinner tickets available and will be pleased to send along on application.

New Members

We have pleasure in welcoming Mr. Adam Stenhouse, who has come down from Scotland to take over at Hendon and Mr. J. W. Wilson, Head Greenkeeper to the Canterbury Golf Club.

NORTHERN

By J. Parker

Chairman:
S. BAILES

Hon. Secretary:
8 Goit Stock Terr., Harden
Bingley, Yorks.

March Lecture

THIS WILL BE HELD ON MONDAY, 22nd March at the Market Tavern, Godwin Street, Bradford, at 7.15 p.m. The speaker will be Mr. F. W. Hawtree, the Hon-Editor of our Journal and well-known Golf Course Architect. I am sure that all who heard the speaker's previous talk to the section, will agree that this is an occasion which should not be missed.

Grand National Sweep

Members are reminded that the closing

KEEP'S

CHLORDANE

CONCENTRATED WORMKILLERS

also kill LEATHER-JACKETS



SELECTIVE

WEED KILLERS



GRANULAR FERTILISERS



RECORD GRASS

FERTILISER



FRANK KEEP (1958) LTD.

82-84 NORTH END

CROYDON, SURREY

Telephone: CROydon 0734

date for the return of counterfoils and moneys is 14th March. It will be appreciated if some mark as to who has sent them is enclosed.

Sheffield Match

The Annual Match versus Sheffield Section will be played over the course of the Scarcroft Golf Club, Leeds, on Tuesday, 14th September (by kind permission of the committee).

January Lecture

This was held on Tuesday, 19th January, at the Queen's Head, Bingley, when 30 members attended. The speaker was Mr. E. M. Baylis, N.D.A. of T.S.T.R.I., who took as his subject "Casebook". In this the speaker dealt with situations he had come across during the course of his advisory visits. He outlined the conditions met and the work done to improve the turf. Members found the cases taken most interesting. A lively question and discussion period followed in which the speaker very ably held his own.

A vote of thanks was proposed by Mr. D. Roberts (Vice-Chairman) seconded by Mr. A. Robertshaw.

New Members

We welcome to the section the following new members: S. Akers (Northcliffe Golf Club) and P. Hunt (South Leeds Golf Club).

MIDLAND

By F. Cashmore

Chairman:
G. HART
(Gay Hill)

Hon. Secretary:
76 Four Oaks Common Road
Sutton Coldfield, Warwickshire

Spring Tournament

WE THANK THE COMMITTEE OF the Gay Hill Golf Club who have kindly granted us the courtesy of their course for our Spring Tournament, on Thursday, 6th May.

President's Match

Mr. Bretherton has given me the date for his match at Handsworth, Greenkeepers versus President's Team, it is Tuesday, 22nd June. Please let us have a good attendance of Greenkeepers on this occasion.

Congratulations

At the Dinner of the Sutton Coldfield Golf Club, Jack Toy was presented with a cheque for quite a substantial amount in recognition of his services to the club as Head Greenkeeper. He retired last year after spending all his working life on the Sutton Coldfield Golf Course, but is still keeping an eye on things.

New Members

We welcome to the section the following new members from Coventry Hearsall Golf Club, G. E. Twigger and P. W. Clayton, and hope they will join in our activities.

WELSH

By S. A. Tucker

Chairman:
M. GEDDES
(Royal Porthcawl)

Hon. Secretary:
36 Clase Road
Morriston
Swansea, Glam.

Spring Meeting

THE SPRING MEETING OF THE Welsh section will be held at the Dinas Powis Golf Club on Wednesday, 7th April 1965. Will all members wishing to attend let me know as soon as possible but not later than Thursday, 1st April, so that catering can be arranged. Note, this will be your only warning as the meeting will be over before you receive your April Journal. Come early so that we can get proceedings under way.

NORTH-WEST

By V. Crabtree

Chairman:
D. PATE
(Royal Birkdale G.C.)

Hon. Secretary:
223 Market Street
Whitworth, Nr. Rochdale

Lecture

THE LECTURE OF 15TH FEBRUARY given by Mr. Shepherd of Messrs. H. Pattisson & Co. Ltd., was a continuation of the success of the one given in December. It is indeed gratifying to have members come along in such numbers.

GOLF COURSE EQUIPMENT

Hole Tins	Tee Boxes
Cutters	Tee Plates
Staffs	Ball Cleaners
Mats	Tablets
Mowers	Rollers
Hose	Sprinklers
Mole Ploughs	Rotary Sifter
Aerating Machines	
and all	
Greenkeeping Tools	

H. PATTISSON & CO. LTD.
STANMORE · MIDDLESEX
Telephone GR1msdyke 4171/4172

Mr. Shepherd spoke on "Aeration" and its benefit in alleviating compaction from the excessive usage of golf courses get in this golfing era. He also spoke on the subject of mole draining and its effects and advantages in the relief of storm water conditions, a really interesting lecture, and our best thanks are extended to Mr. Shepherd for his so able presentation.

March Lecture

Our March Lecture will be held at the Garrick Hotel, Fountain Street, Manchester, at 7.30 p.m. on 8th March 1965. The lecturer will be Mr. W. H. Bartle, F.R.H.S., of S.T.R.I. advisory panel, please give us your continued support.

Spring Tournament

Our Spring Tournament will be held at the home course of Tom Brennan, Wilmslow Golf Club, Knolls Green, Knutsford — please watch the April edition for full particulars and Annual General Meeting information.

NORTH-EAST

Chairman:
J. SIMPSON
(Ponteland G.C.)

By D. Earsman
Hon. Secretary:
Arcot Hall Cottage
Dudley
Newcastle-on-Tyne, 3

Lecture

MR. BAGLEY, SECRETARY OF THE N.A.G. North-East branch, invites members to attend a lecture given by Dr. N. Jackson, S.T.R.I., at the Carlisle Hotel, Westgate Road, Newcastle, Thursday, 18th March, at 7.30 p.m.

Film Show

A film show and refreshments will be given by Ransomes, Sims & Jefferies Ltd., at the Crown Hotel, on the 25th March, 7.30 p.m.

S.T.R.I. Visit

A visit to the S.T.R.I. is proposed in April, the exact date to be given later, for which a bus will be hired, leaving from Newcastle. Will any member wishing to go, please let me know as soon as possible to enable me to make arrangements for meals, etc.

Les Lowery

Members will be pleased to hear that our old friend Les Lowery is out of hospital, we hope it will not be long before he joins us at our meetings once again — he is one of the members who is ever present. I would like to see some of our young members come along to lectures and meetings and not golf competitions only.

New Members

We welcome to the section the following new members: R. Bird, R. E. Pears and A. Richardson.

SHEFFIELD

By J. J. Dearlove
Hon. Secretary:
63 Langsett Avenue
Sheffield, 6

Chairman:
G. HERRINGTON
(Lindrick)

Meeting

OUR FIRST MEETING OF 1965 WAS a talk given by Mr. A. A. Wager representing the Lincolnshire firm of Lindsey and Kesteven Fertilisers Ltd.

Mr. Wager was welcomed by our president, Mr. A. Shardlow, and requested members to refrain from nipping out for drinks during the lecture as this was disturbing to the talker and to others present.

The attendance of about 26 was very encouraging considering the bad weather and difficult travelling conditions.

Using a new approach to the question of fertilisation, Mr. Wager started at the very base of the problem by telling us how some of it is wasted — 60,000 tons going into the rivers and the sea each year via land drains, etc., and how it is returned either by nature (animals, birds, atmosphere or sometimes in our case by grass cuttings), as this is not sufficient for modern requirements, about 1½ to 2 million tons of phosphate rock is added to the soil each year. Also that about 80 per cent of the nitrogen required is supplied by the atmosphere and the 30 to 40 trace elements are usually available in the soil.

Everyone agreed it was very interesting and hope that Mr. Wager will return in the near future to give a follow up on this talk.

Thanking Mr. Wager, our president, Mr. Shardlow, added that he found from his personal experience, it was most helpful to know of the basic factors, which is often considered unnecessary.

Mr. B. Elliott, president of the Sheffield P.G.A., expressed his pleasure to see so many greenkeepers turn out in such bad weather to attend this lecture.

George Herrington closed the meeting with his usual humorous but practical remarks.

Future Lecture

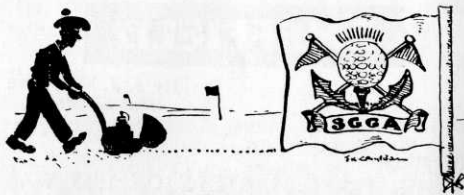
The meeting on the 25th March is by very special request and of very great importance to all members and it is hoped that at least one member of each greens committee, preferably the chairman, will attend. Details are being arranged and will be sent out in good time.

New Address

Our treasurer and competition secretary has now moved to a new permanent address and any correspondence to him should be addressed: R. Whitehead, Esq., 1 Southmoor Avenue, Armthorpe, Doncaster.

MISCELLANEOUS

PROFESSIONALS AND GREENKEEPERS having stocks of used golf balls contact Sparkbrook Golf Ball Co., 295 Highgate Road, Stoney Lane, Birmingham, with a view to filling export orders.



THE SCOTTISH GOLF GREENKEEPERS ASSOCIATION

Chairman:

D. L. MACDIARMID
Royal Burgess Golfing Society
Barnton, Edinburgh, 4

General Secretary:
R. B. MOFFATT
71 Kelton Street, Glasgow, E.2

Lectures

THE COMMITTEE WOULD LIKE TO thank all members for the support with good attendance at the lectures. Mr. J. K. Campbell gave a very interesting talk on the preparation work for the "OPEN" at St Andrews. Mr. Paulin also gave a most interesting talk on course construction, at which we were very pleased to see a large number of young members.

Mr. J. Lithgow

It is with much regret I have to give you the news of Mr. J. Lithgow's death. Mr. Lithgow should have been our speaker at the lectures in February. The thanks of the committee go to Mr. R. C. Aitken for arrangements made for this lecture.

Annual Outing

The Annual Outing will take place on Wednesday, 16th June 1965, over the Luffness New Golf Course by courtesy of the committee of Luffness. The committee hope to have a large number of old and new members and friends of the Trade present on this date.

Prize Draw

The committee have agreed to have the Prize Draw again this year as it is one way of keeping the funds in good standing. The Draw will again be run in conjunction with the "OPEN". tickets will be sent to all members and it is hoped that no tickets will be returned unsold.

Mr. Wm. Watters

It was with much regret we learned of the death of Mr. Wm. Watters, known to many of us as Willie. For many years he was Greenkeeper at Ralston Golf Club and has been retired for a number of years. The committee send the sympathy of the Association to his family.

WEST

Spring Outing

THE SPRING OUTING OF THE WEST Section will be held on Thursday, 22nd



FIBREGLASS FLAGSTAFFS

GRASS COMBS

GOLF FLAGS

AND SWITCHES

STEWART & CO.,

SEEDSMEN LTD.

EDINBURGH, 2

April, over Old Troon Golf Course, by courtesy of the committee of Old Troon.

Subscriptions

Members please note that all outstanding subscriptions must be paid before playing in this event.

EAST

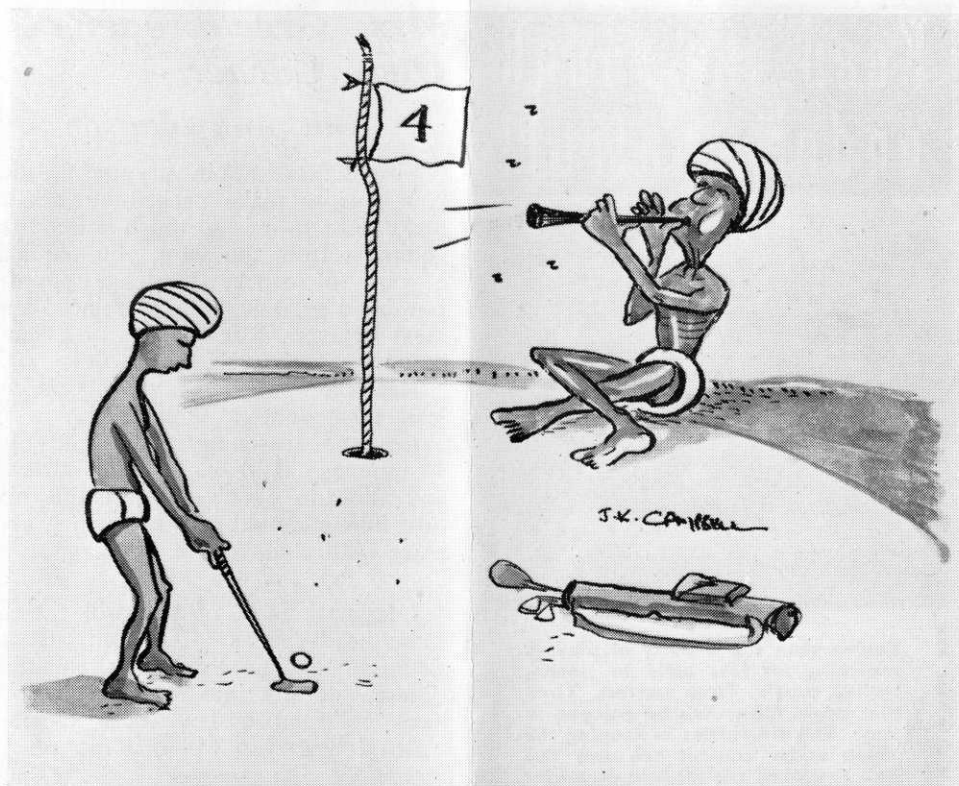
THE ANNUAL COMPETITION WILL be held on Thursday, 13th May, over Craigmillar Park Golf Course, commencing 9.30 a.m.

SITUATIONS VACANT CAMBERLEY HEATH GOLF CLUB,

Camberley, Surrey, require two experienced Assistant Greenkeepers. Free accommodation in newly built, semi-detached, three-bedroom, unfurnished houses. Wages — £12 per week plus overtime. Applications in writing giving full particulars and references to the Secretary.

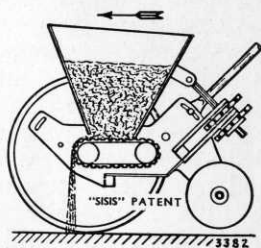
BLETCHWORTH PARK GOLF

CLUB (Dorking) require experienced 2nd greenkeeper. Accommodation not provided. Apply in writing with full particulars to Secretary, Punch-bowl Lane, Dorking.



"SISIS" SPREADERS

REGD PATENTS



- ★ Operate on the most EFFICIENT and ACCURATE PRINCIPLE for spreading of granular fertilisers, powdered dressings, turf chemicals and grass seed.
- ★ TRUSPRED Many Purpose Spreaders
Hand Models - 24 inch and 36 inch.
Tractor Mounted or Towed Models - 60 inch, 72 inch and 90 inch.
- ★ SUPER COULTAS Spreaders
There is also the 36 inch Spreader which includes the features of the TRUSPRED but is fitted with a Rotary Brush and Reduction Gears which ensure extreme accuracy at the lowest rates.
- ★ The SUPER COULTAS can also be power-assisted ensuring constant speed, greater coverage and accuracy, with less fatigue.

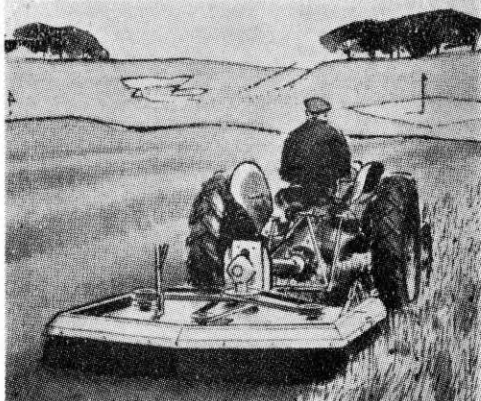
Demonstrations arranged

Send for details:

"SISIS"
PATENT
EQUIPMENT

**"SISIS" Patent EQUIPMENT,
W. HARGREAVES & Co. Ltd.,
MACCLESFIELD - 6363 - CHESHIRE**

Keep the rough under control!



You've seen the anxiety of players searching for lost balls in uncontrolled rough. Time wasted. Time that could otherwise be enjoyed in play. The difficulties in keeping the rough under control are only too well known as are the odd occasions available to top the rough without interfering with play. And then only if the weather permits.

The Hayter 6/14 will give you anytime cutting at a pre-selected height up to 6 inches with easy positive adjustment. It is a rotary mower fitted with special side stone guards and is ideal for controlling the rough on golf courses.

It cannot choke, however wet the grass. Its specially balanced cutter blades revolving at high speed ensure a perfectly level finish. And not a stalk is left standing.

Hayter



* For full details and literature, cut out complete advertisement and send with name and address to:-

HAYTERS (SALES) LIMITED,
34, SPELLBROOK LANE,
BISHOP'S STORTFORD, HERTS.
Tel.: Sawbridgeworth 3444-5-6

SOONER OR LATER YOU'LL BUY A HAYTER

Mrs. Greenkeeper's Own Corner

with Ann Mawson

Meat Loaf comes in very useful, when you have to make packed lunches, to make your own is so much better than getting it from the shop; you require: $\frac{1}{4}$ pint of stock, 1 dessertspoonful powdered gelatine, $\frac{1}{4}$ lb. of minced lean meat leftovers, a few chives or a small onion, seasoning.

Heat the stock and add your minced lean meat leftover, minced onion or chives and seasoning, cook gently for 15 minutes. Add the gelatine, stir well and allow to dissolve. Place the mixture into a mould and leave in a cool place until cold.

* * *

I suppose most of you will get the same headache as I do from time to time, to try to think of something different to put into sandwiches, so I have collected a few ideas together which I hope you will find useful.

Sandwich Fillings

Sliced cold beef and horse radish sauce — grated cheese and chopped celery — lettuce and horse radish sauce — cold lamb and onion sauce — any kind of bottled sauce with a little grated cheese — spring onion and a sliced tomato — anchovy paste and lettuce — flaked crab and watercress — chopped cold vegetables mixed with a little mayonnaise — tinned salmon with a little cayenne pepper — minced cooked cold fish with lettuce or watercress — tinned salmon and cucumber — mashed sardines and a little mayonnaise — tinned lobster and watercress — also any minced cooked cold meat or poultry with lettuce or watercress.

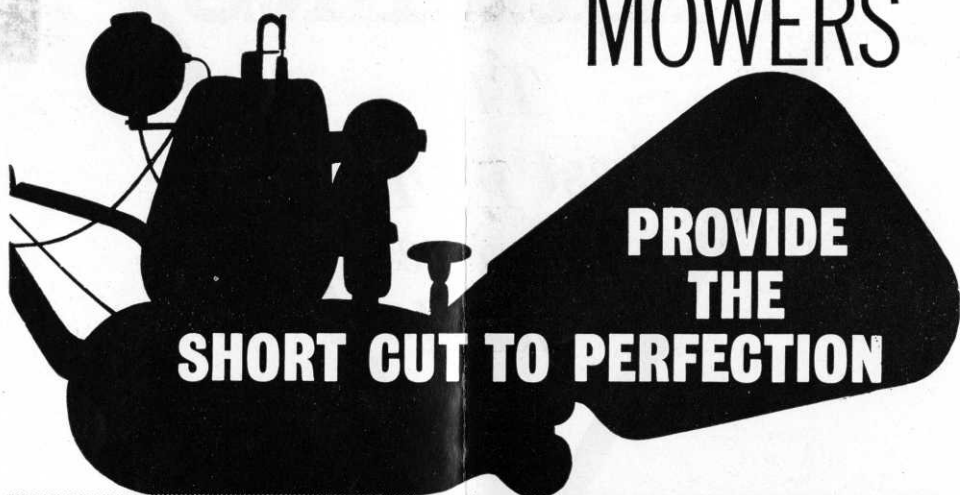
Here are some sweet fillings

Banana sprinkled with sugar and a spot of lemon juice — jam and chopped nuts — banana and chopped preserved ginger — honey and chopped nuts.

* * *

Happy sandwich making. Until April. . . .

GREENS MOWERS



you have a growing need for—

Greens Hand Machines, Motor Mowers,
Rough Cuts, Verge Cutters, Gang Mowers.

GREENS 20 FOR MOTOR MOWERS

Immaculate grooming for big lawns. 4-stroke engine, kick starter, 20" cutting width. Dog clutch puts 6-Blade cylinder out of drive for crossing paths. Drop-out cutting unit.

GREENS RANGER Mk3 GANG MOWERS

Up to 11½ acres an hour! — Hugging the ground, cropping closely and evenly. Can be ganged into 3, 5 or 7-unit mowers. Greens Ranger Mowers are the complete answer for quick and economic cutting of large areas.



A HAWKER SIDDELEY COMPANY

THOMAS GREEN AND SON LTD., NORTH STREET, LEEDS, 2 · Telephone: Leeds 20357

Hawker Siddeley supplies aircraft, aerospace equipment, diesel engines, electrical power generation and distribution, electronics, alloys, and general engineering products. World-wide sales and service.

PARKERS

*The
best people
in the
field*

Parkers are the people to consult whenever any problem in turf management is encountered, for they are **specialists in every department** of ground maintenance and in the operation of all modern equipment. Parkers, too, are indisputably the largest stockists of turf management equipment in the United Kingdom. Call in Parkers whenever a problem arises.

- * Blenders of "**Verdant**" grass seeds and fertilizers
- * Manufacturers of "**Perfecto**" golf-course equipment
- * Specialist London distributors and approved repairers for Ransomes and Hayters
- * "**SISIS**" main distributors
- * New Nets, Netting repairs and re-treatment in conjunction with **Proctor Nets Ltd.**



A SPECIALIST SPARES AND MAINTENANCE SERVICE IS AVAILABLE FOR MOWERS AND ALL TURF EQUIPMENT FROM OUR MODERN WORKS.

T. PARKER & SONS (TURF MANAGEMENT) LTD
WORCESTER PARK, SURREY
* TELEPHONE: DERWENT 7791 (6 LINES)