

JUNE

1965 1/-

The British Golf

Greenkeeper



PARKERS

*The best people
in the
field*

Parkers are the people to consult whenever any problem in turf management is encountered, for they are **specialists in every department** of ground maintenance and in the operation of all modern equipment. Parkers, too, are indisputably the largest stockists of turf management equipment in the United Kingdom. Call in Parkers whenever a problem arises.

- * Blenders of "Verdant" grass seeds and fertilizers
- * Manufacturers of "Perfecto" golf course equipment
- * Specialist London distributors and approved repairers for Ransomes and Hayters
- * "SISIS" main distributors
- * New Nets, Netting repairs and re-treatment in conjunction with Proctor Nets Ltd.

A SPECIALIST SPARES AND MAINTENANCE SERVICE IS AVAILABLE FOR MOWERS AND ALL TURF EQUIPMENT FROM OUR MODERN WORKS.



T. PARKER & SONS (TURF MANAGEMENT) LTD
WORCESTER PARK, SURREY
TELEPHONE: DERWENT 7791 (6 LINES)

BUYERS' GUIDE

BUNKER DRESSER

SMALLHOLDERS UTILITIES SUPPLY CO., 183
Hammersmith Road, London, W.6.

CLINKER, ETC.

T. PARKER & SONS, Worcester Park, Surrey.

CONTRACTORS

GILLIAM & CO. Ltd., Purley, Surrey.
J. R. STUTT Ltd., Canford Cliffs, Bournemouth.

EQUIPMENT SERVICING

R. C. CRAIG, Ltd., 30 Aylmer Rd., London, W.12.
GROSVENOR ENGINEERING CO., Manningham,
Bradford, Yorks.
RELF & KENDALL, 406 Brighton Rd., S. Croydon,
Surrey.
T. PARKER & SONS, Worcester Park, Surrey.

FERTILISERS

CANNOCK AGRICULTURAL CO., Ltd., Cannock,
Staffs.
CARTERS' TESTED SEEDS, Ltd., Raynes Park,
London, S.W.20.
FISONS, Ltd., Harvest House, Felixstowe, Suffolk.
T. PARKER & SONS, Worcester Park, Surrey.
STEWART & CO., Seedsmen Ltd., Edinburgh, 2.
SUTTON & SONS, Ltd., Reading.

FUNGUS CONTROL

CANNOCK AGRICULTURAL CO., Ltd., Cannock,
Staffs.
CARTERS' TESTED SEEDS, Ltd., Raynes Park,
London, S.W.20.
MAY & BAKER, Ltd., Dagenham, Essex.
T. PARKER & SONS, Worcester Park, Surrey.
SUTTON & SONS, Ltd., Reading.

GOLF TEE MATS

UNIVERSAL MAT CO., Ltd., Tileyard Road,
London, N.7.

GRASS SEEDS

CANNOCK AGRICULTURAL CO., Ltd., Cannock,
Staffs.
CARTERS' TESTED SEEDS, Ltd., Raynes Park,
London, S.W.20.
T. PARKER & SONS, Worcester Park, Surrey.
STEWART & CO., Seedsmen Ltd., Edinburgh, 2.
SUTTON & SONS, Ltd., Reading.

GREENKEEPERS' TOOLS & COURSE EQUIPMENT

R. C. CRAIG, Ltd., 30 Aylmer Road, London, W.12.
W. HARGREAVES & CO., Ltd., "Sisis" Patent
Equipment, Macclesfield, Cheshire.
H. PATTISSON & CO., Ltd., Stanmore, Middlesex.
T. PARKER & SONS, Worcester Park, Surrey.
STEWART & CO., Seedsmen Ltd., Edinburgh, 2.

INSECTICIDES

CANNOCK AGRICULTURAL CO., Ltd., Cannock,
Staffs.
T. PARKER & SONS, Worcester Park, Surrey.

LEAD ARSENATE

F. KEEP, Ltd., 82-84 North End, Croydon, Surrey.
T. PARKER & SONS, Worcester Park, Surrey.

LOAMS & MANURES

T. PARKER & SONS, Worcester Park, Surrey.

MOWER ENGINEERS

RELF & KENDALL, 406 Brighton Road, S. Croydon,
Surrey.
T. PARKER & SONS, Worcester Park, Surrey.

MOWERS

BRADLEY'S, Leeds Rd., West Ardley, nr. Wakefield,
Yorks.
T. GREEN & SON, Ltd., Smithfield Ironworks,
Leeds, 2.
GROSVENOR ENGINEERING CO., Manningham,
Bradford.
LLOYDS & CO., Ltd., Pennsylvania Works, Letch-
worth, Herts.
T. PARKER & SONS, Worcester Park, Surrey.
H. PATTISSON & CO., Ltd., Stanmore, Middlesex.
C. H. PUGH, Ltd., P.O. Box 256, Acto Works,
Birmingham, 9.
RANSOMES, SIMS & JEFFERIES, Ltd., Orwell
Works, Ipswich, Suffolk.
HAYTERS (SALES) Ltd., 34 Spellbrook Lane, Bishop's
Stortford, Herts.
E. THOMAS & CO. (Oswestry) Ltd., (Dept. S.6)
Whittington Rd., Oswestry, Shropshire.

SEA SAND

T. PARKER & SONS, Worcester Park, Surrey.

SPRAY EQUIPMENT

T. PARKER & SONS, Worcester Park, Surrey.
PRESSURE JET MARKERS Ltd., 152 The Arches,
Stamford Brook, London, W.6.
B.O.I.L. RAIN SYSTEMS, Upper Halliford, Shepp-
erton, Middlesex.
F. W. BERK & CO., Ltd., Berk House, 8 Baker Street,
London, W.1.

TRACTORS

T. GREEN & SON, Ltd., Smithfield Ironworks,
Leeds, 2.
W. HARGREAVES & CO., Ltd., "Sisis" Patent
Equipment, Macclesfield, Cheshire.
T. PARKER & SONS, Worcester Park, Surrey.
H. PATTISSON & CO., Ltd., Stanmore, Middlesex.

TURF AERATING APPLIANCES

W. HARGREAVES & CO., Ltd., "Sisis" Patent
Equipment, Macclesfield, Cheshire.
T. PARKER & SONS, Worcester Park, Surrey.
H. PATTISSON & CO., Ltd., Stanmore, Middlesex.

WEED CONTROL

MAY & BAKER, Ltd., Dagenham, Essex.
T. PARKER & SONS, Worcester Park, Surrey.

WEED CONTROL SPRAYING

T. PARKER & SONS, Worcester Park, Surrey.

WORM KILLER

CARTERS' TESTED SEEDS, Ltd., Raynes Park,
London, S.W.20.
T. PARKER & SONS, Worcester Park, Surrey
SUTTON & SONS, Ltd., Reading.

ENQUIRY BUREAU.—The Editor desires to point out that he will be pleased to answer enquiries from our readers, and forward to them the name and address of the manufacturer or supplier of any particular proprietary article or product used in the construction, maintenance and upkeep of a golf course. Enquiries are coming in from greenkeepers asking for such information. They may, for example, know the trade name of the article or product they wish to purchase, but may not be conversant with the name and address of the actual manufacturer or supplier. The Enquiry Bureau will gladly supply this information, and thus enable the greenkeeper to contact the manufacturer or supplier direct.

TO MANUFACTURERS.—In order that our information may be kept constantly up to date, manufacturers or suppliers are requested to forward their latest trade lists, catalogues, and any other confidential information regarding their products. By so doing the Bureau will be able to function to the mutual benefit of all concerned.

TRADE REVIEWS.—The Editor will be pleased to arrange to devote space in our editorial columns to a review of our advertisers' products, etc. Will advertisers please forward details for this purpose.

**FILL UP AND POST THIS FORM AT ONCE TO:—
HON. SECRETARY, B.G.G.A., ADDINGTON COURT GOLF CLUB,
FEATHERBED LANE, ADDINGTON, CROYDON, SURREY**

B.G.G.A. ANNUAL TOURNAMENT 1965

WHITLEY BAY GOLF CLUB, WHITLEY BAY, NORTHUMBERLAND

on 9th, 10th and 11th August

Please enter my name as a competitor and send me the full programme and conditions of the competition and draw sheet when published.

NAME (Block Letters).....

ADDRESS.....

CLUB..... B.G.G.A. SECTION.....

HANDICAP..... at (Course) SSS.....

Place X in box if eligible for Artisan Medal

Place X in box if eligible for Coming of Age Cup (60 and over)

Place X in box if requiring a caddy car 1st day

2nd day

3rd day

ENTRIES CLOSE 30th JUNE

THE BRITISH GOLF

GREENKEEPER

HON. EDITOR : F. W. HAWTREE



FOUNDED 1912

PUBLISHED MONTHLY FOR THE
BENEFIT OF GREENKEEPERS,
GREENKEEPING AND THE GAME
OF GOLF BY THE BRITISH GOLF
GREENKEEPERS ASSOCIATION

President:

CARL BRETHERTON

Vice-Presidents:

SIR WILLIAM CARR

R. B. DAWSON, O.B.E., M.S.C.,

F.L.S.

GORDON WRIGHT

F. W. HAWTREE

S. NORGATE

I. G. NICHOLLS

F. V. SOUTHGATE

P. HAZELL

W. KINSEY

R. C. AINSCOW

Chairman:

H. G. SHEPPARD

Weston-Super-Mare G.C.

Vice-Chairman:

J. SIMPSON

Ponteland G.C.

Hon. Secretary & Treasurer:

C. H. DIX

Addington Court G.C.

Featherbed Lane

Addington, Croydon, Surrey

Executive Committee:

Carl Bretherton (President),

G. Herrington, J. G. Bryan,

E. H. Benbow, S. T. McNeice,

J. Parker, J. Simpson,

A. A. Cockfield, V. Crabtree,

E. W. Folkes, D. G. Lord

Hon. Auditors:

Messrs. SMALLFIELD RAWLINS AND

Co., Candlewick House, 116/126

Cannon Street, London, E.C.4

Hon. Solicitor:

R. A. BECK

21 Lime Street, London, E.C.3

The Association is affiliated to the
English and Welsh Golf Unions.

No. 243 New Series

JUNE 1965

GOLF professional Eddie
Callaway has built his
idea of the "perfect" golf
course.

There are no members
and Callaway plans to keep
it that way.

Daily Mail.

JUNE

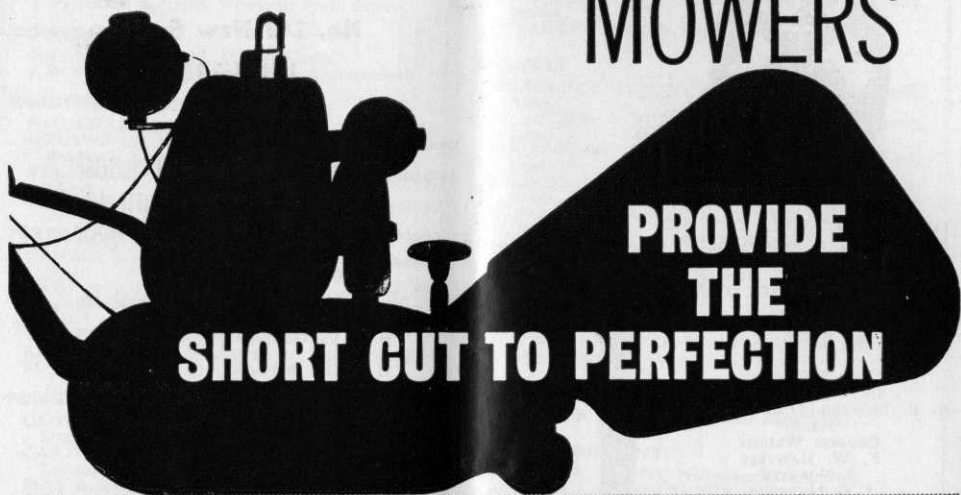
CONTENTS

Page	3	TEE SHOTS
	4	MOWING
	6	A.G.M. APPRENTICESHIP— GOLF GREENKEEPERS
	8	CORRESPONDENCE
	9	WHAT IT MEANS TO BE A GREENKEEPER'S WIFE and SITUATIONS VACANT
	12	SECTION NEWS
	17	S.G.G.A. NEWS
	19	MRS GREENKEEPER
	20	HON. SEC.'s NOTES

EDITORIAL AND ADVERTISEMENT OFFICES: Addington Court Golf Club, Featherbed Lane, Addington, Croydon, Surrey. Telephone: SANDerstead 0281. SUBSCRIPTION RATE: 14/- for 12 issues post paid Published during the first week of each month. LATEST COPY DATE: 8th of month prior to insertion. All rights reserved. Reproduction of original articles and photographs in whole or in part is prohibited. This Magazine shall not, without the written consent of the Publishers first given, be re-sold, lent, hired out, or otherwise disposed of. *Contributions and photographs of interest are invited.*

TO INSERT A CLASSIFIED ADVERTISEMENT, write to the Advertisement Manager at the above address. The rate is 6d. per word (minimum 15 words). Box Number, 1/6 extra. Remittance must be sent with order. Please state number of insertions required and write advertisement in block letters. Advertisements will be inserted in the first available issue.

GREENS MOWERS



you have a growing need for—

Greens Hand Machines, Motor Mowers,
Rough Cuts, Verge Cutters, Gang Mowers.

GREENS 20 FOR MOTOR MOWERS

Immaculate grooming for big lawns. 4-stroke engine, kick starter, 20" cutting width. Dog clutch puts 6-Blade cylinder out of drive for crossing paths. Drop-out cutting unit.

GREENS RANGER Mk3 GANG MOWERS

Up to 11½ acres an hour! — Hugging the ground, cropping closely and evenly. Can be ganged into 3, 5 or 7-unit mowers. Greens Ranger Mowers are the complete answer for quick and economic cutting of large areas.



A HAWKER SIDDELEY COMPANY

THOMAS GREEN AND SON LTD., NORTH STREET, LEEDS, 2 · Telephone: Leeds 20357

Hawker Siddeley supplies aircraft, aerospace equipment, diesel engines, electrical power generation and distribution, electronics, alloys, and general engineering products. World-wide sales and service.

TEE SHOTS



by the Editor

Grants

“If you are a taxpayer you will, no doubt, be interested to know that work has now started on a magnificent new club house for the Royal Winchester Golf Club.” The article in a Sunday newspaper at the end of May went on to describe how government grants had been made to this golf club and others, implying strongly that the taxpayer’s money was being spent on luxuries for the few. There is certainly a danger that this kind of journalism will find material to feed on if all golf clubs get the idea that new locker-rooms can be partly built at public expense. The money is apparently available—£40 million every year for the development of sport. So far as golf is concerned, the urgent need is for more space to play—not more space to store clubs.

Many deserving cases can get no help because work has already started or because they have too short a tenure of their ground. At Llandeilo in South Wales the club was obliged to start work on its new course because it has to quit its present land next year. But starting work disqualifies them from a grant.

Quality

Another drawback to the scheme as it now operates is that grants are made with no assurance as to the quality of what will be done. It is no use adding nine holes to a golf course unless they are to give permanent satisfaction. Several “do-it-yourself” jobs will help fill the immediate need, but produce dissatisfaction in the future as their defects show up.

Any scheme for helping golf is laudable, but this one needs to be both more flexible and more selective if it is to avoid old-fashioned reproaches about helping the rich man’s game.



Grass Seeds

FOR HIGHEST PURITY
AND GERMINATION

SEND
NOW
FOR OUR FREE
'GREENKEEPING'
CATALOGUE

THE CANNOCK AGRICULTURAL CO. LTD., CANNOCK, STAFFS

MOWING

By

G. C. MACADAM, S.D.H.,

Advisory Officer,

The Sports Turf Research Institute

Mr Macadam writes about some basic principles of a basic job for apprentices and newcomers to greenkeeping.

DURING the growing season a very high proportion of the working time of the greenkeeping staff will be spent on mowing the greens. The efficiency with which this is carried out largely influences the quality of the grass swards and the putting surfaces. It is important to understand the principles of the work in order to obtain the best results.

Each time a golf green is mown and the cuttings removed, the soil is deprived of some of its nutrients. Cutting therefore should be aimed at removing the minimum amount of foliage and this calls for regular cutting at a reasonable height of cut. Mowing irregularly and at long intervals is harmful because a greater weight of foliage is removed than by more frequent mowing.

Delayed Cutting

In practice, greens mown three times per week when growth is relatively vigorous usually provide good conditions for satisfactory putting. When the cutting is done must be determined locally but Monday, Wednesday and Friday are usually set aside as "mowing days". It is, however, an advantage at the weekend if the cutting could be delayed until Friday afternoon or even Saturday morning, as greens mown early on Friday are often slow to putt on by Sunday when golf nowadays is usually at its height. During the spring and autumn periods when growth is less vigorous, mowing might only be required once or twice per week but uneven and straggly growth should not be allowed to form.

It is often thought that continued close cutting brings about a reduction in the weed population. Whilst this is

true up to a point, keen mowing will not eliminate the majority of weeds which establish in golf greens. Many weeds of turf such as dandelions, daisies, pearlwort, clover and yarrow are capable of surviving and spreading under very close heights of cut and over-close mowing would only reduce the competition which the grasses can offer them. In addition, continued keen mowing slowly results in a reduction in grass vigour and density. This condition favours the invasion of moss, thus creating a further problem.

During the main growing season when steady grass growth is obtained, a height of cut of 3/16th in. is the desirable minimum on golf greens. However, during any periods of prolonged drought this could well be increased to ¼ in. During drought, growth is hampered and a little extra cover helps the turf withstand the moisture shortage. This is not so important where adequate artificial watering can be done and indeed might be undesirable as an increase in the cutting height might allow straggly growth to develop.

How High?

During the early spring and late autumn periods mowing is best carried out at a height of ¼-5/16 in. according to conditions. During the spring 5/16 in. is quite close enough until signs of fairly settled growth are noticed when the blade can be lowered to ¼ in. and ultimately to the minimum as growth further improves. During the autumn the reverse order should be observed and it might even be necessary to continue topping the grass occasionally right into the early winter if the season remains open.

There are no hard and fast rules as to the week or month when the height of cut should be raised or lowered as this depends entirely on growing conditions and the prevailing weather. The greenkeeper is the person who should be allowed to decide just what is best as his own experience will have taught him.

Adjustment of mowing heights should be carefully done so that an even cut is

assured. Most modern mowers suitable for golf greens are of the roller type. With these the height of cut is the measured distance between a straight edge placed across the front and rear rollers and the actual cutting edge of the sole plate. This distance should be set and checked at each end of the sole plate and again in the middle.

Fine Adjustment

The cutting cylinder should also be finely adjusted to the sole plate. If the setting is too tight the machine will be hard to drive and if it is too slack a clean cut will not be obtained. A simple test is to rotate the cutting cylinder against a piece of paper placed on the edge of the sole plate and adjust the setting until a satisfactory cut has been obtained with the cutting cylinder running freely.

The question often arises whether grass cuttings should be allowed to fly or should be boxed off. It is true to say that the regular return of cuttings conserves plant foods and provides some organic matter to the surface soil. This assists drought resistance and helps

give the turf a good colour. However, the accumulation of organic matter in the base of the turf favours the activity of earthworms and can lead to the spread of weeds and weed grasses. The continual return of cuttings also makes the green surfaces soft and spongy and more susceptible to disease attack. In view of this grass clippings are usually best removed at all times but if the surfaces are completely free of any weed the occasional cut without the box might be beneficial in helping the greens to withstand a severe drought.

Finally the care of the mowing machine should never be forgotten. After each day's work the mower should be thoroughly cleaned of all grass cuttings and any worm casts which may have adhered to the rollers. Regular lubrication should be a habit and the machine should be stored neatly in the shed where it is not moved around unnecessarily when obtaining other implements. It should also be kept away from mixing bases to avoid corrosion which may occur from fertilizer dusts.



Write for details of our Green and Fairways Watering Schemes.

'Pop-up' sprinklers for your greens as illustrated above, with a monitor controller to carry out a pre-arranged watering programme, and the Self-travelling Sprinkler watering almost an acre at one setting, for your fairways, will prevent a repetition of the dry dusty conditions of 1964. Forty years of Irrigation experience have gone into the design of these two unique sprinklers which are being used in many countries today.

Write to Department B.G.G. for illustrated literature and full details.



BRITISH OVERHEAD IRRIGATION LTD
UPPER HALLFORD-SHEPPERTON-MIDDLESEX-ENGLAND

The Joint Council for Golf Greenkeeper Apprenticeship

Hon. Secretary,
B. M. Wood, F.C.I.S.,
St Ives Research Station,
Bingley, Yorkshire.
Tel.: Bingley 2484.

Chairman: F. W. Hawtree.

MINUTES OF THE SECOND ANNUAL
GENERAL MEETING OF THE JOINT COUNCIL
HELD IN THE ST IVES MANSION, BINGLEY,
ON MONDAY, 26TH APRIL 1965.

Present: Messrs F. W. Hawtree
(Chairman), J. Parker (Vice-Chairman),
J. R. Escritt, G. Herrington, D. L.
McDiarmid, R. B. Moffat (substituting
for Mr W. Bradford), W. A. W.
Sivewright, and B. M. Wood (Hon.
Secretary).

Apologies: Apologies for absence
were reported from Messrs W. Bradford,
H. Fry and G. Breen-Turner.

*Minutes of First Annual General
Meeting:*

RESOLVED:

That the minutes of the first Annual
General Meeting of the Joint Council
held on 20th April 1964 were taken as
read, approved and signed by the Chair-
man.

Financial Account 1964: The Hon.
Secretary presented the Receipts and
Payments Account for the year to 31st
December 1964. This showed receipts
amounting to £311 5s. against payments
of £238 12s. 4d., leaving a balance
carried forward of £72 12s. 6d.

RESOLVED:

That the Receipts and Payments
Account for the year ended 31st
December 1964 as presented by the Hon.
Secretary be and is hereby received and
adopted.

Honorary Secretary's Report: The
Hon. Secretary reported that by and
large the scheme had got away to an
encouraging start. Much interest had
been shown in the scheme by golf clubs
though not all of those which had
requested information had taken the
next step of registering apprentices.

From the inception of the scheme on
1st January 1964 to date, 38 sets of

deeds had been issued and 15 appren-
tices had been registered, though a
further batch of applications would be
considered at an ordinary meeting
following this Annual General Meeting.

The main difficulty experienced in
the working of the scheme had been
the provision of suitable courses in
background sciences. The Joint
Council having an insufficient number
of apprentices in any one area to justify
the provision of special courses it had
been necessary to fall back on existing
courses, mostly in general horticulture.
He believed, nevertheless, that the Joint
Council's policy of insisting on some
formal instruction being given in
theoretical subjects was the right one.
A dossier of courses which can be pro-
vided throughout the country had been
built up as the result of a national
survey undertaken at the Joint Council's
request. The whole question of the
training of groundsmen—which term
could be taken in its general context
to include the training of greenkeepers
—was under investigation by the
Department of Education and Science
and both Mr Escritt and the Secretary
had attended the first meeting of
interested bodies. The interests of the
Joint Council's apprentices would, of
course, be kept in mind at any future
meetings attended.

The Secretary had addressed meetings
of the Association of Golf Club Secre-
taries in Harrogate and of the B.G.G.A.,
Sheffield Section, the latter being a joint
meeting with Chairmen of Green Com-
mittees. There was a possibility of
his being asked to address a future
meeting of Sheffield and District Union
of Golf Club representatives. Every
opportunity of publicising the scheme
through the Institute's publications was
taken through the courtesy of the
Director and occasional articles were
supplied to Editors of Golfing publica-
tions.

The Northumberland Union of Golf
Clubs had requested assistance in the
preparation of a circular to their mem-
ber clubs and this had been given.

The Hon. Secretary concluded by
referring to the present climate through-



ATCO

FOR THE GOLF COURSE — *and for life!*

PARTICULARLY

THE 20" SPECIAL

FOR 'SUPERFINE' MOWING OF GREENS

This 'self-contained' motor mower has become recognised as the best machine of all for the maintenance of the perfect finish required for the Greens.

The specification is complete and will maintain peak performance —for life.

£90



ATCO's range of equipment for Golf Courses covers every possible requirement from the 12 in. Roller type right up to the 34 in. Roller type, and Gang mowers as well. Then, of course, there is a full range of Rotaries and Sidewheels.

and perhaps most important of all **IMPECCABLE SERVICE**

Everywhere there is an ATCO Engineer attached to an ATCO owned Branch ready to advise on any problem in connection with grass cutting.

***DEMONSTRATIONS OF ANY ATCO CAN BE ARRANGED TO SUIT YOU OR YOUR GREENS COMMITTEE**

CHARLES H. PUGH LIMITED
P.O. Box 256 Atco Works, Birmingham 9

THE 24" and 28" ROLLER MODELS

Specially designed for mowing large areas of grass such as the approaches to the Greens

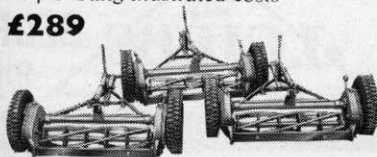


24"-£99 28"-£160

ATCO GANG MOWERS for the FAIRWAYS

Unique—because individual units can be 'ganged' in multiples of one to nine units. Three models are available The Triple Gang illustrated costs

£289



out the country which was generally favourable towards the training scheme and he stated that this had undoubtedly been reflected in the helpful attitude shown towards him by all with whom he had been in contact.

RESOLVED:

That the report of the Hon. Secretary be received with thanks.

Election of Officers: On separate motions it was RESOLVED that officers elected for the ensuing year be as follows:—Chairman, F. W. Hawtree, Vice-Chairman, J. Parker, Hon. Secretary and Treasurer, B. M. Wood.

CORRESPONDENCE

F. W. HAWTREE, ESQ.,
Editor
British Golf Greenkeeper

Will you please accept my sincere thanks for the very kind tribute you pay me in your Journal on the occasion

of my impending retirement from the Artisan Golfers' Association. Your generous sentiments are deeply appreciated. But it strikes me that a brief addendum is desirable to your notes. Prior to my 30 years of office as Hon. Secretary of the A.G.A. it was my privilege and good fortune to serve for 13 years as Assistant Secretary to your father, the late F. G. Hawtree, who was the Association's first Secretary. His kindness, his wise guidance, his friendship, were qualities for which I have ever been most grateful and if any applause seems merited for services I may have rendered I pray it may be shared with F. G. H. Beyond any shadow of a doubt the solid foundations on which the B.G.G.A. and the A.G.A. are now firmly established are due entirely to the devoted efforts and sound principles of F. G. Hawtree.

Yours sincerely,

W. J. GARDNER.

Get on to GIBBS

FOR THE AMAZING

NEW 770

12-Speed SELECTAMATIC!

The DAVID BROWN Hydraulic control system that has revolutionised Tractor Design

Big range of working speeds from $\frac{1}{2}$ m.p.h. to 16 m.p.h. 12 forward and 4 reverse speeds.

It's the handiest, most advanced, low cost tractor of its size. See it at Gibbs soon.

Low, Low Price. No other tractor in the 30/40 h.p. class offers so much for so little cost.

Simple Foolproof Fingertip Selection. The driver simply dials the service he wants and controls the entire operation by a single lever.

Power-Packed The new 33 b.h.p. 3-cylinder diesel engine gives high lugging power and lower fuel consumption.



*Also available
with Golf
Course tyres*

STANDARD PRICE £662 EX WORKS



BEDFORD · MIDDLESEX

Phone: Feltham 5071



By Appointment to
Her Majesty
Queen Elizabeth II
Suppliers of
Agricultural Machinery
and Implements

SPECIALIST DISTRIBUTORS AND AUTHORISED REPAIR AGENTS FOR RANSOMES LAWN MOWERS

What it means to be a Greenkeeper's Wife

"I feel that I have been subsidising golf clubs all my married life." Those words were written by the wife of a greenkeeper, who, throughout the 33 years of her married life, has had to go out to work to supplement the family income.

The letter is her reaction to my notes last week, when greenkeepers' problems, ranging from the apprentice scheme to poor pay and lack of support by the clubs, were given a good airing. This is what Greenkeeper's Wife has to say:

"Being the wife of a greenkeeper I read Tee Up on Tuesday—my husband has to, as it is the only way he gets to know what is going on at his club! At the time we were married, 33 years ago, our wage was 35s. (dole was 26s. man and wife), but my husband, loving his job, was prepared to work six full days every week, apart from Good Friday and Christmas Day, when the course was closed.

"Then came the war. He was called up in 1940 at 31 years of age, did five years' service, then it was back to his job—for £4 10s.

"He moved to another club for £6 10s., and after 19 years' service there his monthly cheque for a five-and-a-half-day week, and every other Sunday morning, with stoppages, is £42 4s. We have to stretch it in a five-week month.

"I have been able to work, thank God, but I still feel that I have been subsidising golf clubs all my married life. I am sorry we shall not live to see the day when there are no greenkeepers.

"You may ask: Why, after 43 years, is he still in such a trade?"

"It has been for the love of the game and matching his wits against nature and the two-legged rabbits.

OTHER HALF

"I haven't written this as a tale of woe, but to let you see a bit of a greenkeeper's other half. Sorry I cannot publish my name, but I swear all I have said is true and, thanks to you, more people may be made to take notice."

As a comparison, to the pay quoted by Greenkeeper's Wife, it is worth noting that the Executive Committee of the Greenkeepers' Association after a country-wide survey, recently issued the following scale as a guide to clubs—Head greenkeeper, £16 to £20 per week; first assistant £13 to £13 10s.; greenkeepers £12.

And they point out that in the top scale the lower limit represents comparative newness to a responsible post and the upper limit will often be exceeded at busy clubs.

Another recommendation is that a club operate a pension scheme which guarantees a man not less than half (including the State pension) his income at retirement.

*With acknowledgments
to the "Sheffield Telegraph"*

Situations Vacant

ASSISTANT GREENKEEPER REQUIRED. Up to £15 per week, according to experience. Apply Secretary, Hampstead Golf Club, Winnington Road, London, N.2.

HEAD GREENKEEPER FOR 18 hole golf course in the London area, must be fully competent and able to take charge. Write: Secretary, West Middlesex Golf Club, Greenford Road, Southall, Middlesex.

MISCELLANEOUS

PROFESSIONALS AND GREENKEEPERS having stocks of used golf balls contact Sparkbrook Golf Ball Co., 295 Highgate Road, Stoney Lane, Birmingham, with a view to filling export orders.



Berk Summer Range

of turf treatments for busy

Watering



'Supplex' Sprinkler

This triple-bore plastic hose is minutely perforated throughout its length. One end is closed so that when the perforations are opened by water pressure, a *fine* rain-like spray is produced which soaks without flooding – in a rectangular pattern. Supplex is the logical choice for rectangular areas. Lengths are available to cover, in one operation, tennis courts, bowling greens and cricket pitches.

'Tricoflex' Reinforced Plastic Hose

For conveying water, Tricoflex is three ways superior to rubber hose. Tricoflex withstands the kind of rough handling that soon destroys a rubber hose; it weathers better – it is particularly resistant to long exposure to the sun – and its light weight and suppleness make it easier to coil and carry. Tricoflex hose is constructed of 3 layers: black P.V.C. inner tube, with mirror finish for optimum water flow, knitted jacket of 'Tergal' polyester fibre and an opaque vivid yellow outer cover of polythene. Tricoflex has been proved in rugged tests on building sites – will last you years!



Moss Control

Berk Moss Control compounds are based on mercury – this is present in an insoluble and harmless form. Mercury not only kills moss but prevents subsequent growth – it can control moss for up to three years. Three compounds are available: the choice depends on the individual requirements and the time of the year.

M.T.S. (Mercurised Turf Sand)

This is applied at 4 oz. per square yard from early spring to late summer. It kills moss immediately, reduces weed population and, because it contains a quick-acting nitrogen fertilizer, stimulates grass growth.

Moss Killer

This is applied at 4 oz. per square yard at any time of the year but especially prior to normal autumn treatments. Moss Killer does not contain a grass stimulant but gives rapid control over moss.

Moss Eradicant

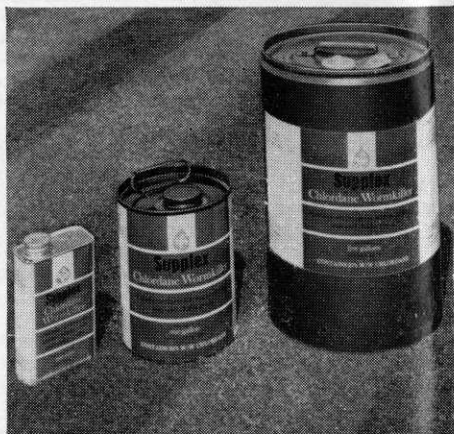
A special formulation to control the following crop of moss while killing the immediate crop gradually – so there is no disfigurement from dead moss.

Hints on Moss Control

1. Moss will always invade and colonise neglected turf.
2. Do not rely on raking alone to remove moss. This spreads moss spores and fragments which can re-infest the site. Always use a moss killer in conjunction with raking.
3. Correct turf management should always be practised. After using a moss killer, the factors responsible for the appearance of moss should be removed.
4. Some common causes for the appearance of moss are:
 - *Poor drainage and aeration
 - *Bare patches
 - *Over-rolling and compaction
 - *Acid and undernourished soils
 - *Persistent close mowing.

groundsmen & greenkeepers

Wormkiller



Berk 25% Chlordane Wormkiller

Suplex Chlordane kills worms *underground* and kills leatherjackets, ants and chafer grubs. It is cheap and easy to apply - calling for very little watering and minimum labour. Best applied in warm, showery weather during autumn or spring when worms are most active and near the surface

Berk 20% Chloride Wormkiller (Granular)

Applied at 80 lb. per acre, this form of Chlordane is particularly useful where grass is kept long or the sward is thick.

Fertilizers

'Thrive'

A balanced organic fertilizer with the essential trace elements, in pellet form. Ideal for ornamental borders. Applied as base dressing at 4 oz. per square yard and as top dressing at 2 oz. per square yard.

Turf Fungicide

Berk Turf Fungicide

This fungicide contains the equivalent of 2½% Mercury and gives excellent control of Fusarium Patch (*F. Nivale*) and Dollar Spot (*Sclerotinia Homeocarpa*) in Turf. It should be applied in late Summer and Spring for the control of Fusarium, or when symptoms appear in the case of Dollar Spot. Apply as a powder or dispersed in water. *Spray.* 1 oz. in 2 gallons of water applied through a watering can or sprayer is sufficient for 40 sq. yds. of Turf. *Dry Method.* 1 oz. can be mixed with 14 lb. of Sand or finely divided soil and applied to 40 sq. yds. of Turf. It is important not to exceed the recommended rates or damage may result. To assist in obtaining complete control, healthy grass growth should be encouraged.

**POST THIS COUPON NOW
FOR LEAFLETS AND PRICES**

F. W. Berk and Co. Ltd, Berk House, 8 Baker Street, London, W.1 Telephone: HUNter 6688

Please send me literature and prices for the following (tick as appropriate).

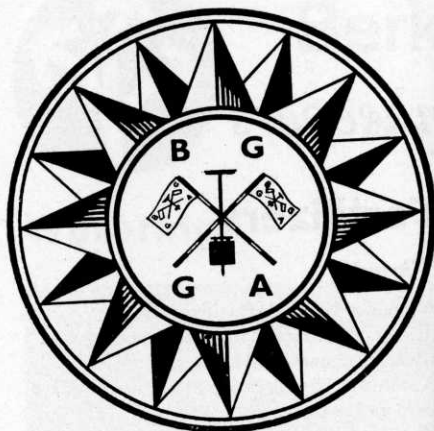
Suplex **Tricoflex** **Moss Control** **Wormkiller** **Fertilizer** **Fungicide**

NAME.....**POSITION**.....

ADDRESS.....

(B.G.G./2)

News



from the Sections

SHEFFIELD

Chairman:
G. HERRINGTON
(Lindrick)

By J. J. Dearlove
Hon. Secretary:
63 Langsett Avenue
Sheffield, 6

A.G.M.

THE 20TH ANNUAL GENERAL Meeting was held at the Brunswick Hotel, Sheffield, on the 29th April.

On conclusion of the meeting, the 20 members present were invited to drink with the President during his absence.

All officials were re-elected plus the addition to the Committee of A. Spencer and A. Goldthorpe.

Fixtures

Provisional fixtures for our golfing season are as follows: President's Prize at the Thrybergh Golf Club, Rotherham, on Tuesday, 29th June, 2 p.m. Annual Tournament at the Hallamshire Golf Club on Tuesday, 20th July.

New Members

A warm welcome to the section to two new members. D. Barker, a keen golfer, has joined the Lees Hall team and J. Mardlin has joined Percy Booker at Abbeydale.

NORTHERN

Chairman:
S. BAILES

By J. Parker
Hon. Secretary:
8 Goit Stock Terr., Harden
Bingley, Yorks.

Spring Tournament

THE ANNUAL SPRING TOURNAMENT of the section was played over the course of the Shipley Golf Club on Thursday, 6th May (by courtesy of the Committee of the Club).

Thirty-six members took part. Unfortunately, after a fine start to the day, the weather deteriorated and the afternoon round was played in steady rain.

Following tea the prizes were presented by Mr Barry Rhodes, Captain of the Club. A vote of thanks was proposed by our President, Mr W. Mountain and seconded by the Chairman Mr S. Bailes. I am sure all members were grateful to all members of the club staff whose work and help contributed to a most enjoyable day out.

Results: Scratch Prize—M. Brown (Northcliffe) 165; 1st Division: 1st—E. Paley (Stand) 154; 2nd—D. Copeland (St Ives) 156; 3rd—K. Driver (Serlby Park) 158; 2nd Division: 1st—A. Robertshaw (Otley) 149; 2nd—H. Marshall (Cleckheaton) 152; 3rd—C. Moore (Northcliffe) 152. Veterans' Prize—L. Sharp (Woodhall Hills) 82. Vice-President's: 1st—A. Brophy (Sandmoor) 150; 2nd—A. Kirk (Horsforth) 150.

Our thanks are due to the following who so kindly contributed to our Prize Fund: Ransomes, Sims & Jefferies, Stewart & Co., Anderton-Richardson Fertilisers, Lunevale Products, Fisons, T. Green & Son, E. G. Jepson & Co., H. Pattison & Co., Woodheads Seeds, Stephen Toulson & Son, Rigby Taylor Ltd. and W. Mountain & Son Ltd.

New Members

We are pleased to welcome to the section the following new members: P. Carter of Cobble Hall and G. Creasey of Fulford Golf Club.

NORTH-WEST

Chairman:
D. PATE
(Royal Birkdale G.C.)

By V. Crabtree
Hon. Secretary:
223 Market Street
Whitworth, Nr. Rochdale

Spring Tournament and A.G.M.

OUR SPRING TOURNAMENT WAS held at Wilmslow Golf Club on Tuesday, 4th May 1965, we are deeply grateful and do most sincerely thank the Captain and Council for the courtesy of this very fine course and clubhouse facilities. Our thanks are due also to Mr T. Brennan and his staff for the excellent condition of the course, to the Steward and Stewardess and their staff for two most enjoyable meals and to Mr F. Taggart, the Club Professional, for the use of the caddy cars and the prize he gave to swell our list. We played nine holes in the morning and nine holes in the afternoon, this arrangement was most satisfactory as it gave ample time to prepare for the presentation in the early evening and allowed everyone time to enjoy their evening meal. The Annual General Meeting got under way in good time.

The weather in the morning was a real soaker but was more kind in the afternoon, in fact, really pleasant. The outstanding achievement of the day was the card handed in by our old friend Mr W. Bridges to claim the double of Scratch and Best Net prizes with the magnificent score, 69 less

handicap of 1 and net 68. Our prize list consisted of donations and prizes presented by:—

Messrs Carters Tested Seeds.
Messrs Lunevale Products Ltd.
Messrs Fisons Horticulture Ltd.
Messrs W. Wilcock & Sons.
Messrs W. Burrows (Mc) Ltd.
Messrs Rigby Taylor Ltd.
Messrs Sutton & Sons Ltd.
Messrs W. E. Sowerbutts & Co. Ltd.
Messrs John Peak & Co. Ltd.
F. Taggart, Esq., and O. P. Jones, Esq.

These were won by: Scratch and Best Net — W. Bridges, 69—1—68; 2nd Net — A. Warhurst, 89—17—72; 3rd Net — O. P. Jones, 93—20—73; 4th Net — E. W. Taylor, 82—9—73; 5th Net — G. W. Davey, 80—7—73; 6th Net — E. Macavoy, 81—3—78; 7th Net — A. J. Cundall, 89—11—78; 8th Net — F. Walstead, 95—16—79.

In the afternoon our hon. members and visitors played an 18-hole competition, this was won by M. Nuttall with a return of 80—5—75, and a bottle of Whisky presented by the Section. We were very ably assisted, nay! almost organised by Mr W. Greaves, Mr N. D. Barlow and Mr J. Wilcock, who spent all day collecting cash and reckoning cards and scores, a personal thank you to these three gentlemen, who make it possible for me to play at all. The prizes were presented by the Captain who was introduced by our Chairman, Mr D. Pate.

The Annual General Meeting followed the presentation of the prizes, this was held in the Ladies' Lounge. The meeting opened with Mr D. Pate in the chair, there was one apology for absence from Mr B. Ellis who was ill (we hope you are soon back to your normal health Ben).

The Minutes of the last Annual General Meeting were read and confirmed, the Treasurer gave his report, which showed a fairly healthy balance and how this had occurred. The Chairman gave his report and explained to members a Committee decision to present W. F. Payne with a silver candelabra as a token of our esteem and appreciation of his services to us. He thanked the Officers and Committee for their wholehearted support during the past

12 months. The Secretary gave his report, thanking Romiley Golf Club and the Ashton & Lea Golf Club for their hospitality during the year when we held our Spring and Autumn Tournaments.

A full explanation was given of the difficulties that had arisen during the winter season regarding the lectures, when one had to be cancelled. Generally speaking the attendances at lectures was good, this was very encouraging. Though the summer trip to S.T.R.I. was disappointing as regards numbers, the section is gradually moving from strength to strength, our membership now being 89 with 2 attached from Northern Ireland and 26 Hon. Members, Vice-Presidents, Life Members and President, totalling 117. This figure as usual differs slightly from that presented by our Treasurer in his report, he only counts as members those with paid up subscriptions. The difference occurs because there is a two-year period of arrears before expulsion from the Association, so if perchance you happen to be in arrears, please send your subscriptions to date to the Treasurer, E. Macavoy, 21 White Meadow Drive, Thornton, Liverpool, or myself. Members in arrears are not entitled to receive the Journal or S.T.R.I. Report and these will be cancelled from the list in the near future. My thanks for the support of the President, Officers and Committee, who have worked diligently and efficiently throughout the past year.

The election of Officers were as nominated, with the exception of Committee with eight nominations for six places voting took place, with the result that two members were replaced, the Committee and Officials now being: President — Mr W. Kinsey; Chairman — Mr D. Pate; Vice-Chairman — Mr W. Burgess; Treasurer — Mr E. Macavoy; Secretary — Mr V. Crabtree; Committee — Messrs W. Bridges, H. Needham, H. M. Walsh, T. Brennan, W. Earnshaw and O. P. Jones, this shows a very healthy interest having to vote to elect members. Our warmest thanks were expressed to H. Smith and G. V. Davey for their services as Committee members.

It was resolved on the recommendation of the Committee Messrs Qualcast Ltd., of Derby be approached for our trip this year,

R. C. CRAIG

AND CO. LTD.

SPECIALISTS IN THE REPAIR AND
MAINTENANCE OF ALL TYPES OF MOWERS

★ Agents for: RANSOMES, SIMS &
JEFFERIES Ltd.

★ LLOYDS & Co. Ltd.
WEBBS LAWN MOWERS

★ Distributors: DENNIS BROS Ltd.

★ GANG MOWERS FOR HIRE

We will gladly call on you to advise on your grass cutting equipment or arrange demonstrations. Ring us now.

★

**153 Arch Stamford Brook
Station, LONDON, W.6.**

RIVERSIDE 5415

to take place late October—further news of this will be printed in the Journal.

There were three resolutions accepted for forwarding to the National Executive for inclusion in the Agenda of the National A.G.M.

W. Bridges invited us to Wallasey Golf Club for our next Spring Tournament, this has to be confirmed.

In any other business it was suggested that our Spring Meeting be 18 holes, 9 in the morning and 9 in the afternoon, this was accepted, thus ensuring that the A.G.M. could be held early, allowing members with a long way to travel to get away at a reasonable hour.

New Members

We welcome as members the following gentlemen, hoping that their association with us will be long and enjoyable.

Mr Raymond L. Jones (Bury Golf Club), Mr K. Gardner (Ashton & Lea Golf Club), Mr A. Gibson (Reddish Vale Golf Club), Mr P. P. Barnes (Ashton-under-Lyne Golf Club), Mr P. Ryan (Romily Golf Club), Mr A. Johnson (Romily Golf Club).

Hon. Members

Mr J. McAndie Robertson, B. Metcalf, J. A. B. Castell.

Transferred to Southern Section

R. Gibson (Hartsbourne Country Club) although his membership with the North West was very short, we wish him every success with his new Club.

MIDLAND

By F. Cashmore

Hon. Secretary:

76 Four Oaks Common Road
Sutton Coldfield, Warwickshire

Chairman:

G. HART
(Gay Hill)

Subscriptions

MAY I REMIND MEMBERS THAT subscriptions for 1965-66 are now due. Head Greenkeepers 30s.; 1st Assistants 20s.; and Associate Members 15s. Please get them paid as soon as possible.

President's Match

I got quite a lot of names at Gay Hill Golf Club for the match at Handsworth on Tuesday, 22nd June, and I hope you will be able to take part. Please let me know by the 16th if you cannot.

Annual Dinner

The date of the Annual Dinner at the King's Head Hotel, Bearwood, has been fixed for 29th October. Please make a note of the date and while on the subject, I am sure all who have attended will be very sorry to hear that Mrs Mason, who for many years has run our raffle for us, is very ill. All we can do is send her our sincere sympathy.

Spring Tournament

The weather was not too bad for our match at Gay Hill. We had 21 entries from members, and 15 visitors joined us in the afternoon. The prize-winners were: Best Net—Ransomes Challenge Cup, Tankard and



GOLF COURSE EQUIPMENT

Hole Tins	Tee Boxes
Cutters	Tee Plates
Staffs	Ball Cleaners
Mats	Tablets
Mowers	Rollers
Hose	Sprinklers
Mole Ploughs	Rotary Sifters
Aerating Machines	
and all	
Greenkeeping Tools	

H. PATTISSON & CO. LTD.
STANMORE · MIDDLESEX
Telephone GRImdsyke 4171/4172

Bottle Whisky, G. Woodward 145; Best Gross—Sutton Challenge Cup and Electric Kettle, E. Benbow 159; 2nd Net—Electric Toaster, E. Walford 149; 3rd Net—Spring Balance, A. Boraston 153; 4th Net—Carpet Sweeper, D. Brazier 153; 5th Net—Holdall, I. Jones 154; 6th Net—Six 65's, V. Smith 154; 7th Net—Twelve Forsum Golf Balls, W. Barton 158; 8th Net—Brush and Tie Tidy, J. Grealy 159; 9th Net—Bar Set, W. Handy 159.

Players with 2's on card, a golf ball each, V. Smith, A. Boraston, E. Walford, R. Smith and D. Brazier.

Two visitors tied with 73 net — R. Ramsden and A. Howells, three golf balls each.

The prizes were presented by Mr Denis Hay, Captain of Gay Hill, who said how pleased they were to have us. He hoped that we had been made welcome, and gave us an invitation to come again. Our Chairman, George Hart, thanked the Captain for presenting the prizes, and asked him to thank the Gay Hill Club for allowing us the courtesy of their course and clubhouse. He thanked the stewardess and her staff for the excellent meals she had provided and the kind welcome we had received; he also thanked our friend Mr Bill Payne for coming and doing his usual chores, and I am glad to say that although Mr Payne is moving down to the South West we still come into his territory, so we are not losing him.

We thank the following donors towards our prizes: Ransomes Ltd., Sutton & Sons, W. Hargreaves Ltd., Fisons Ltd., Parker &

Ballinger Ltd., Cannock Agricultural Ltd., Carters Ltd., E.T.B. Mowers Services, Sparkbrook Golf Ball Co., F. W. Lees & Sons, Tudor Mower Services, Mr J. V. Harrison, Mr L. Wheeler and Mr Carl Bretherton.

New Member

We welcome a new member from the Habberley Golf Club, J. Grealy, Class B.

SOUTHERN

By W. Mason

Chairman: W. E. MOORE (Romford)
 Hon Secretary: 18 Albert Road, Hendon, N.W.4.
 Tel.: SUNnyhill 0245

Spring Tournament

THE BEST MORNING ROUND WITH A net score of 68 went to S. Morton, best afternoon to A. Fordham, who also returned the best 36 holes best net with a total 142, 2nd E. Stillwell 143, 3rd H. Emery 143, 4th D. Neville 144, 5th D. Major 146, 6th R. Plain 148, 7th W. Kingston 148, 8th J. Kirkpatrick 149 gross, who also took the scratch prize. G. Payne 151, J. Noakes 153, A. Chappell 153, J. Rennie 153, C. A. Moore and J. Ness 154. I would like to thank all the firms who so kindly contributed towards our prize list, also the Captain of the Ealing Golf Club who, in addition to presenting the prizes, gave two shirts which by the way were given to the 1st year competitors, namely, 1st P. Ainsworth gross score 179 and C. Maule gross score 197. One and all enjoyed the very warm welcome given, we found the course in very good condition, the catering and weather excellent. The Hawtree Challenge Cup with tankard was won by J. Rennie of Wanstead.

New Members

We welcome as members A. Curtis and L. Woodridge.

EAST MIDLAND

(Derby G.C.)
 Chairman:
 F. FROST

By S. Fretter

Hon. Secretary:
 Portland Lodge Farm
 Portland Road
 Kirby Muxloe, Leicester

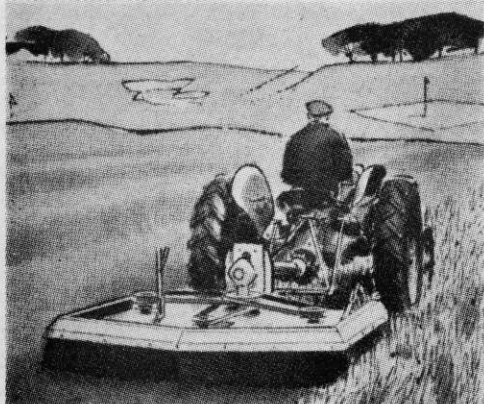
Annual Spring Tournament

THE WARMEST SUNNIEST DAY this year had to be Wednesday, 12th May. This was the day the East Midland Section chose to hold the Spring Tournament at the Northamptonshire County Golf Club.

Leading scorer and prize winners were— Nett scores—1st S. T. McNeice, Leics., 68; 2nd J. Carrick, Northants., 76; 3rd G. S. Dunkley, Northants., 78; 4th R. W. Willars, Leics., 78; 5th D. G. Whitehead, Wollaton Pk., 79; 6th A. Thornton, Wollaton Pk., 81; 7th D. Bull, Bulwell Hall, 82; 8th D. Warrington, Birstall, 82; 9th F. Frost, Derby Mun., 83; 10th B. F. Mott, Kingsthorpe, 84. Ties were decided on last 9 holes.

Four members in our Vice-President's

Keep the rough under control!



You've seen the anxiety of players searching for lost balls in uncontrolled rough. Time wasted. Time that could otherwise be enjoyed in play. The difficulties in keeping the rough under control are only too well known as are the odd occasions available to top the rough without interfering with play. And then only if the weather permits.

The Hayter 6/14 will give you anytime cutting at a pre-selected height up to 6 inches with easy positive adjustment. It is a rotary mower fitted with special side stone guards and is ideal for controlling the rough on golf courses.

It cannot choke, however wet the grass. Its specially balanced cutter blades revolving at high speed ensure a perfectly level finish. And not a stalk is left standing.

Hayter



* For full details and literature, cut out complete advertisement and send with name and address to:-

HAYTERS (SALES) LIMITED,

34, SPELLBROOK LANE,
 BISHOP'S STORTFORD, HERTS.

Tel.: Sawbridgeworth 3444-5-6

SOONER OR LATER YOU'LL BUY A HAYTER



"I think we've got an extra nine holes in the locker-room!"

section returned scores of 76, under section Rules of Ties being decided on last 9 holes, the eventual winners were 1st W. Freeman, Kirby Muxloe 76, and 2nd J. Holmes, Chilwell Manor 76.

Mr W. H. Orbell, Captain of Northants. County Golf Club, very kindly presented the prizes. In his remarks Mr Orbell paid tribute to the Greenkeepers and their staffs. Mr F. Frost, Section Chairman, thanked the Captain for presenting the prizes and asked him to convey our sincere thanks to the Committee of the Club for their kindness in granting the Section the courtesy of the course, to Joe Carrick and his staff for the splendid condition of the course, to all who had generously donated the prizes and to Mr G. Vaughan and Mr T. Woods of Messrs Ransomes, Sims & Jefferies, who took over to deal with all the cards and working out the prize list.

We are indebted to the following, who contributed to our prize fund—R. C. Ainscow, W. M. Youngs, Stan Long, Ransomes, Sims & Jefferies Ltd., H. Pattesson & Son Ltd., Rigby & Taylor Ltd., Thomas Green & Son, Bayles & Wylie Ltd., Stewarts of Nottingham Ltd., Sandcliffe Garage Ltd., and Leicester Horticultural Eng. Co. Ltd.

S. T. McNiece Writes

After Mr Frost had expressed his thanks all round, he called on S. Fretter, Hon. Sec., to say a few words—much to my surprise he

announced that a presentation was to be made to me on retiring from office as Hon. Sec. I was then, on behalf of the Section President, R. C. Ainscow, who was unable to attend, presented with a statuette of a golfer combined with a cigarette lighter. Before I had time to admire this wonderful present Mr Fretter said it was now the turn of the Section. I then received a wallet and a cheque, which was contributed by the members of the Section. I was at the time so taken aback and surprised that I offered only a feeble thanks. So may I once again say to one and all—thank you very much for your kind gesture. I appreciate it very much. 12th May is a day I shall always remember.

Honorary Life Member

I have much pleasure to announce that Mr Frank Oliver of Bulwell Hall has reached the retiring age of 65 and, having been a member of the Section since its formation, becomes a Honorary Member of the Association. We wish Frank a long and happy retirement.

New Members

We have much pleasure in welcoming to the Section C. G. Yates of Cosby Golf Club, P. C. Rodwell and M. Dix. We hope we shall have the pleasure of their company in the near future.



THE SCOTTISH GOLF GREENKEEPERS ASSOCIATION

Chairman:
D. L. MACDIARMID
 Royal Burgess Golfing Society
 Barnton, Edinburgh, 4
 General Secretary:
R. B. MOFFATT
 71 Kelton Street, Glasgow, E.2

WEST

Spring Meeting

BY THE COURTESY OF THE TROON Golf Club, the West Section of the Scottish Greenkeepers held their Annual Spring Meeting over the Old Course, Troon, on 22nd April, and the scoring was as follows:

- M. Travers (Scr.) 71.
 First Class
 D. Paterson, Paisley (7) 74.
 L. E. Millar, Erskine (4) 75.
 J. Graham, Glasgow Gailes (4) 78.
 Second Class
 R. McGrory, Erskine (15) 71.
 F. Powell, Troon (10) 77.
 R. Fitzpatrick, Whitecraigs (15) 78.
 Third Class
 D. Lees, Buchanan Castle (18) 77.
 R. Meldrum, Kilmacolm (17) 77.
 R. J. Baird, Largs (17) 78.
 Veterans
 G. Morris, Milngavie (4) 77.
 J. Robertson, Troon (4) 78.
 New Member
 I. Lewis, Largs 81.

S.G.G.A. EAST

OUR SPRING OUTING WAS HELD over Craigmillar Park Golf Course on the 13th May, by kind permission of the Captain and Committee who gave us a good welcome.

J. W. Wood, Head Greenkeeper, had the course in good order and the weather was kind.

Prize winners:—

- Scratch
 W. Darling, Royal Musselburgh 75.
 First Class
 D. Herd, Longniddry 71.
 J. Clark, Monktonhall 74.
 R. Watt, Gullane 74.
 Second Class
 D. Wright, Kingsknowe 66.
 H. Wright, Prestonfield 68.
 W. Huish, Gullane 72.
 Third Class
 T. Hogg, Longniddry 68.
 P. Herd, Lothianburn 73.
 J. W. Wood, Craigmillar Park 78.
 New Members Prize
 J. Gray, Dunbar 75.



EDINBURGH

FIBREGLASS FLAGSTAFFS

GRASS COMBS

GOLF FLAGS

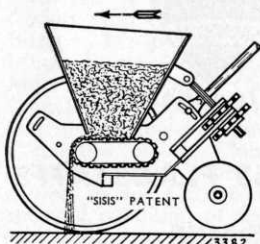
AND SWITCHES

STEWART & CO.,
 SEEDSMEN LTD.
EDINBURGH, 2



Ransomes Sims & Jefferies, whose mowers are used in nearly a hundred overseas countries including Japan, were visited recently by Mr J. Nakatsukasa, Sales Manager of their Tokio Distributors, Mikuni Shoko Co. Ltd. He is seen with Mr John Wilson of Ransome sales staff examining a new 7 ft. 2 in. cut ride-on motor mower.

"SISIS" SPREADERS



- ★ Operate on the most **EFFICIENT** and **ACCURATE PRINCIPLE** for spreading of granular fertilisers, powdered dressings, turf chemicals and grass seed.
- ★ **TRUSPRED** Many Purpose Spreaders
Hand Models - 24 inch and 36 inch.
Tractor Mounted or Towed Models - 60 inch, 72 inch and 90 inch.
- ★ **SUPER COULTAS** Spreaders
There is also the 36 inch Spreader which includes the features of the TRUSPRED but is fitted with a Rotary Brush and Reduction Gears which ensure extreme accuracy at the lowest rates.
- ★ The **SUPER COULTAS** can also be power-assisted ensuring constant speed, greater coverage and accuracy, with less fatigue.

Demonstrations arranged

Send for details:

"SISIS" Patent EQUIPMENT,

W. HARGREAVES & Co. Ltd.,

MACCLESFIELD - 6363 - CHESHIRE





JUNE 9th	Southern Section A.G.M., Talbot Restaurant.
16th	S.G.G.A., Annual Outing, Luffness New Golf Course.
22nd	Midland Section, President's Match.
29th	Sheffield Section, President's Prize, Thrybergh Golf Club, Rotherham, 2 p.m.
JULY 20th	Sheffield Section, Annual Tournament, Hallamshire Golf Club.
AUG. 9-10-11th	Annual Tournament, Whitley Bay.
SEPTEMBER 14th	Northern Section, Annual Match v. Sheffield Section, Scarcroft Golf Club.
29th	East Midland Section, Autumn Tournament, Birstall Golf Club.
OCTOBER 29th	Midland Section, Annual Dinner, King Head Hotel, Bearwood.

Mrs. Greenkeeper's

Own Corner

with Ann Mawson

Now the season for soft fruits is here. Unfortunately it is short lived — so I make the most of them while I can.

Gooseberries are usually the first in the shops; or you might be lucky enough to have some in the garden.

Gooseberry Fool

You require 1 lb. of gooseberries — 3 oz. caster sugar — 1 tablespoonful of syrup or honey — a little water — $\frac{1}{2}$ pint boiled custard.

Top and tail the gooseberries and wash them well. Put into a saucepan with the caster sugar and syrup or honey and enough water to prevent them burning. Stew until quite soft. Put the cooked fruit through a sieve, then mix with the boiled custard. Allow to cool then top with whipped cream and a few cherries.

To serve 3-4 people.

Gooseberry Fluffy Pudding

1 lb. gooseberries — 3 oz. caster sugar — $\frac{1}{4}$ oz. butter — 1 egg — 4 tablespoons water — $\frac{1}{2}$ lb. sponge cake — $\frac{1}{4}$ pint milk — and an additional $1\frac{1}{2}$ oz. caster sugar.

Top and tail the gooseberries and wash well. Put into saucepan with sugar and water, stew gently until soft. Strain the fruit and put the juice aside, mash the pulp. Grease a pie dish with a little butter, put the fruit pulp into the bottom and cover with slices of sponge cake. Separate the white from the yolk of the egg, beat the yolk with a tablespoon of milk, boil the rest of the milk and pour it over the egg yolk beating well. Add a teaspoon of caster sugar (from the $1\frac{1}{2}$ oz.) return to the saucepan and cook over a low heat stirring all the time *but do not allow to boil*. Pour the fruit juice over the sponge cake and over this the egg yolk mixture. Whisk the white of egg until it is so stiff you can turn the basin upside down without losing any. Fold in the rest of the caster sugar and pile it on top of the contents of the dish. Bake until the egg white has set and is a light brown.

Mark 2 Gas — 315° Electricity. To bake 25 minutes.

Until July. . . .



HON. SECRETARY'S NOTES

1965 Annual Tournament

AN ENTRY FORM FOR THE above is enclosed in this journal. Do not delay in returning it to me if you are coming to Whitley Bay.

1966 Annual Tournament

Members will be glad to learn that next year's tournament will be played in the Midlands, and the Little Aston Golf Club have kindly offered the courtesy of their course for this event, on 8th, 9th and 10th August. Our very sincere thanks to Little Aston.

Annual Draw

Tickets are now in the hands of Section Secretaries and it is hoped that all members will make a great effort to ensure the financial success of this draw. The prize allocation has been changed by agreement of the Executive Committee and the usual prizes for the seller of the winning ticket and the most tickets, will again be given, although not stated on the tickets.

C. H. Dix.

AMERICANS ARE OFFERED PRIVATE PLANE GOLF TOUR OF BRITAIN

Latest tourist attraction being offered to North Americans—fourteen games of golf in nine days on a dozen of the most famous courses in Britain!

This dream-come-true holiday for golf addicts is the brain child of Mr Ken Gregory, Founder-Chairman of Gregory Air Taxis.

“Every year golfers from the States fly to Britain to spend a few days on championship courses like Gleneagles”, he says.

“We are taking the idea a stage further. Under our scheme, a four-some from the U.S. or Canada can not only play all the golf they want in a short holiday, but will see a large slice of Britain as well.

“Everything is being laid on. Private plane, personal pilot, cars whenever required, the best hotels, green fees—even the caddies.”

And the cost? £700 a head for a party of four—*Including First Class Air Travel from New York or Montreal and Back.* The tour includes such famous courses as Gleneagles, St Andrews, Carlyon Bay, Royal St David's and Deal.

Americans are being told that the British Travel Association on Fifth Avenue will tell them how to book—“if you feel you're fit enough to make a golfer's dream come true”.

R

and

K

* The letters that represent
the highest ever standards
of mower selection and
service

(No wonder — the showrooms are packed with top-name machinery.)

RELF AND KENDALL

406 BRIGHTON ROAD, SOUTH CROYDON, SURREY. CRO 0578

11 STATION ROAD, NEW BARNET. BARNET 8228



For the
FINE CUTTING
of up to one acre

Ransomes MARQUIS



Mowing with the Ransomes Marquis means mowing with smoothness, precision and control, leaving an excellent finish. The 4-stroke engine has ample power in reserve and a separate clutch allows the machine to continue cutting with the landroll drive disengaged. There are two models, 18" and 20" cut, both have new extra-large grass boxes. Both are really fine machines



Ask your Ransomes Area Sales and Service Distributor for a demonstration and remember, when you invest in a Ransomes machine you buy from a range of mowers which cover *all* your grass cutting requirements.

RANSOMES SIMS & JEFFERIES LTD. · IPSWICH

TELEPHONE: IPSWICH 54711 TELEX: No. 18174

Printed by Lindsay & Co. Ltd., Edinburgh, for "The British Golf Greenkeeper"