

AUGUST
1965 1/-

M.H.J.

The
British Golf

Greenkeeper



PARKERS

*The best people
in the
field*

Parkers are the people to consult whenever any problem in turf management is encountered, for they are **specialists in every department** of ground maintenance and in the operation of all modern equipment. Parkers, too, are indisputably the largest stockists of turf management equipment in the United Kingdom. Call in Parkers whenever a problem arises.

- * Blenders of "Verdant" grass seeds and fertilizers
- * Manufacturers of "Perfecto" golf course equipment
- * Specialist London distributors and approved repairers for Ransomes and Hayters
- * "SISIS" main distributors
- * New Nets, Netting repairs and re-treatment in conjunction with Proctor Nets Ltd.

A SPECIALIST SPARES AND MAINTENANCE SERVICE IS AVAILABLE FOR MOWERS AND ALL TURF EQUIPMENT FROM OUR MODERN WORKS.



T. PARKER & SONS (TURF MANAGEMENT) LTD
WORCESTER PARK, SURREY
TELEPHONE: DERWENT 7791 (6 LINES)

AUG 1965
PAID

PAID

By Appointment to Her Majesty the Queen



Motor Mower Manufacturers Charles H. Pugh Ltd.

ATCO

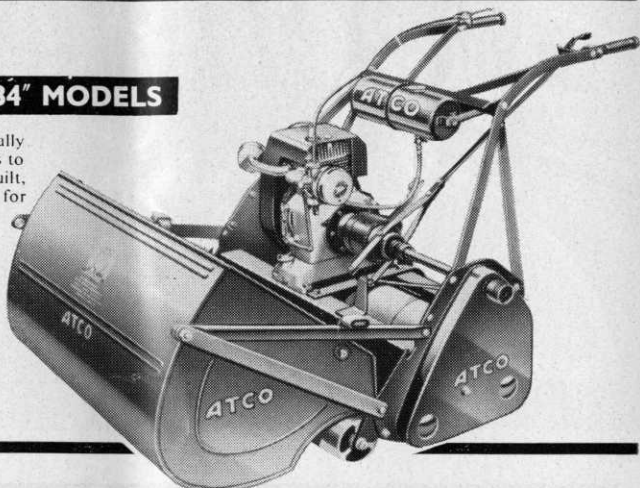
FOR THE GOLF COURSE — *and for Life*

PARTICULARLY

THE 20", 24", 28" & 34" MODELS

These machines are designed specially for those with large areas of grass to mow. They are ruggedly built, efficient and economical—ideal for the high hourage user. Every Golf Course needs at least one of these machines, for mowing the approaches to the Greens and all those areas of grass which need a finer cut than can be obtained with a gang mower

**20" models
from £53**



ATCO's range of equipment for Golf Courses covers every possible requirement from the 12" Roller type right up to the 34" Roller type, and Gang mowers as well. Then, of course, there is a full range of Rotaries and Sidewheels.

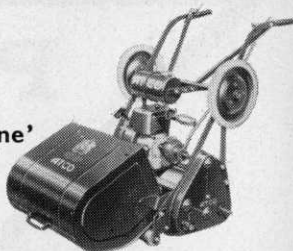
*and perhaps most important
of all* **IMPECCABLE SERVICE**

EVERYWHERE there is an ATCO Engineer attached to an ATCO owned Branch ready to advise on any problem in connection with grass cutting.

* **DEMONSTRATIONS OF ANY ATCO
CAN BE ARRANGED TO SUIT YOU
OR YOUR GREENS COMMITTEE**

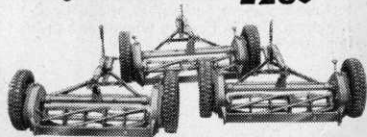
CHARLES H. PUGH LIMITED
P.O. BOX 256, ATCO WORKS, BIRMINGHAM, 9.

**The 20"
SPECIAL
MODEL
for 'superfine'
mowing of
greens.
£90**



**ATCO GANG MOWERS
for the FAIRWAYS**

Unique—because individual units can be 'ganged' in multiples of one to seven units. Three models are available. The Triple Gang illustrated costs **£289**



THE BRITISH GOLF

GREENKEEPER

HON. EDITOR : F. W. HAWTREE



FOUNDED 1912

PUBLISHED MONTHLY FOR THE
BENEFIT OF GREENKEEPERS,
GREENKEEPING AND THE GAME
OF GOLF BY THE BRITISH GOLF
GREENKEEPERS ASSOCIATION

President:

CARL BRETHERTON

Vice-Presidents:

SIR WILLIAM CARR
R. B. DAWSON, O.B.E., M.S.C.,
F.L.S.

GORDON WRIGHT
F. W. HAWTREE
S. NORGATE
I. G. NICHOLLS
F. V. SOUTHGATE
P. HAZELL
W. KINSEY
R. C. AINSCOW

Chairman:

H. G. SHEPPARD
Weston-Super-Mare G.C.

Vice-Chairman:

J. SIMPSON
Ponteland G.C.

Hon. Secretary & Treasurer:

C. H. DIX
Addington Court G.C.
Featherbed Lane
Addington, Croydon, Surrey

Executive Committee:

Carl Bretherton (President),
G. Herrington, J. G. Bryan,
E. H. Benbow, S. T. McNeice,
J. Parker, J. Simpson,
A. A. Cockfield, H. M. Walsh,
E. W. Folkes, D. G. Lord

Hon. Auditors:

Messrs. SMALLFIELD RAWLINS AND
Co., Candlewick House, 116/126
Cannon Street, London, E.C.4

Hon. Solicitor:

R. A. BECK
21 Lime Street, London, E.C.3

The Association is affiliated to the
English and Welsh Golf Unions.

No. 245 New Series

AUGUST 1965

REASONING

*The air is blue around the tee—
Invectives rise and fall;
Our shortest-tempered member must
Have just addressed the ball.*

—A. R. FONTENOT

AUGUST

CONTENTS

Page	3	TEE SHOTS
	4	A PERENNIAL PROBLEM
	6	<i>Continuing . . .</i> WHY TURFGRASS RESPONDS TO PROPER USE OF LIME AND SULFUR COMPOUNDS
	7	SPECIAL OCCASIONS
	11	SECTION NOTES
	12	SITUATION VACANT
	14	S.G.G.A. NEWS
	15	HON. SECRETARY'S NOTES
	16	MRS. GREENKEEPER

EDITORIAL AND ADVERTISEMENT OFFICES: Addington Court Golf Club, Featherbed Lane, Addington, Croydon, Surrey. Telephone: SANderstead 0281. SUBSCRIPTION RATE: 14/- for 12 issues post paid. Published during the first week of each month. LATEST COPY DATE: 8th of month prior to insertion. All rights reserved. Reproduction of original articles and photographs in whole or in part is prohibited. This Magazine shall not, without the written consent of the Publishers first given, be re-sold, lent, hired out, or otherwise disposed of. *Contributions and photographs of interest are invited.*

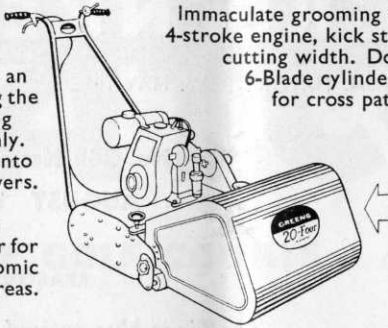
TO INSERT A CLASSIFIED ADVERTISEMENT, write to the Advertisement Manager at the above address. The rate is 6d. per word (minimum 15 words). Box Number, 1/6 extra. Remittance must be sent with order. Please state number of insertions required and write advertisement in block letters. Advertisements will be inserted in the first available issue.

**GREENS
RANGER Mk 3
GANG
MOWERS**

Up to 11½ acres an hour! - Hugging the ground, cropping closely and evenly. Can be ganged into 3.5 or 7-unit mowers. Greens Ranger Mowers are the complete answer for quick and economic cutting of large areas.



GREENS 20 FOUR MOTOR MOWERS
Immaculate grooming for big lawns. 4-stroke engine, kick starter, 20 inch cutting width. Dog clutch puts 6-Blade cylinder out of drive for cross paths. Drop out cutting unit.



A SHORT CUT TO PERFECTION



HAWKER SIDDELEY

GREENS MOWERS

THOMAS GREEN & SON LTD., NORTH STREET, LEEDS 2 Telephone: Leeds 20357

Hawker Siddeley supplies aircraft, aerospace equipment, diesel engines, electrical power generation and distribution, electronics, alloys, and general engineering products. World-wide sales and service.

TEE SHOTS



by the Editor

Progress

The leading bodies in British golf set up a Golf Development Council at the C.C.P.R. offices in London on 22nd July. Stated objects include co-operation with government departments and other bodies to stimulate the provision of more golf facilities and encourage teaching the game in schools.

Mr. Gerald Micklem was elected Chairman and his wide experience of the game will be invaluable in consolidating and developing this important advance. The R. & A., national golf Unions, Golf Foundation, P.G.A., L.G.U., Public Courses Association and Artisan Golfers Association were all concerned in the inaugural meeting and are contributing to the funds.

* * *

More Bounce to the Ounce

British golf ball manufacturers are said to have surprised the Americans with the distance some of their new balls will travel. There is no initial velocity test in Britain. 250 feet per second is the maximum allowed by the U.S.G.A. Distance, however, still has to take its place with consistent flight, feel, and sound and, of course, durability.

* * *

Moving

Mr Bill Payne has moved from Sutton Coldfield to the south-west and will be living in North Street, Cheddar. Warwickshire greenkeepers will be glad to know that their county is still in his territory.

* * *

Careful

E. Hanlon, who lives at Avon in Connecticut, holed his tee shot on the 170 yard 11th at the Avon Country Club. He declared his ball in the hole "unplayable", picked it out of the cup, and putted in for a three. Amateurs in the U.S. are allowed to take \$200 worth of merchandise from firms which hand out gifts for "aces", but Hanlon would rather see the money go to some kind of charity than over the bar to entertain admirers.

A

PERENNIAL

PROBLEM

by **H. J. LIDGATE**

*Chemist, The Sports Turf Research
Institute*

IN the months of August and September we can usually expect to receive a few inches of rain which will begin to moisten the soil after the fairly dry summer. From many points of view this rain is most desirable but there are inevitably snags in all good things. The greenkeeper will find that in addition to a greater amount of grass cuttings in the mower's box he may well have an extra helping of worm casts also.

Casting

The earthworm is brought up by autumn rain from the deeper regions of the soil where it spends the dry summer and once again begins to cast on the surface. This is most unfortunate when the soil surface in question happens to be one of your prize golf greens or on a fairway or tee. It is a great pity that some, though not all, earthworms have this bad habit of casting on the surface because they do help a great deal in aerating the soil with their burrows. These burrows also help the penetration of moisture into the soil. At St Ives there is a difference between the drought resistance of plots treated with wormkiller (lead arsenate) and untreated plots, the latter suffering a lot less from drought in dry weather. However, the troubles caused by allowing the earthworms to work unchecked more than counter any possible benefits.

On greens the activities of the earthworm are most unsightly and result in an increase of annual meadow grass and weeds in the turf. On tees the resulting muddiness of the surface leads to heavier wear and the need for more renovation whilst on fairways the effect of large numbers of casts is to give a greasy surface which is unpleasant for walking on and can make slopes very slippery.

At most golf courses some wormkilling measures are taken though they are sometimes of limited extent. The usual difficulty is in the expensiveness of the presently available control measures. Lead arsenate, that old standby of so many greenkeepers now costs approximately £200 per ton, i.e. about £5 to £7 per green according to the size of the green and approximately £60 per acre for the treatment of fairways excluding the cost of labour involved in applying the material. Of course, this should give good results for several years — maybe six or more — but we do hear reports of the material not always working in which case it is an expensive failure. It is safer to carry out a trial of say $\frac{1}{2}$ cwt. and observe results in twelve months time than to go ahead with larger quantities in the first place. Calcium arsenate which is a rather cheaper material is now unfortunately unobtainable as nobody manufactures it any longer.

Choice

There are alternative materials, Chlordane for instance is very popular at present though again we get odd reports of complete failure even when the right amount of Chlordane has been used. It costs approximately £12 per acre for the material, i.e. £1 to £1 10s. per green and it usually gives good results for at least one year. For those who prefer to use a less poisonous material, Derris dust or Mowrah meal are available each costing about £27 per acre excluding the cost of the labour involved — rather a lot with Mowrah meal which requires watering in with a high pressure hose to get the best results,

followed by sweeping up of the dead worms afterwards. The results obtained from these materials depend very much on the timing of the work. It is important that the material shall be used when the worms are very near the surface preferably in warm moist weather as often occurs in October. The treated areas may be free from worms for up to two years though one year is more usual. Neither of these products persist in the soil and where only small areas are treated worms soon re-invade from the surrounding areas. Where a good initial kill of worms is achieved over a large area then it may remain worm free for a year or two until the worm population builds up again.

Persistent

Copper sulphate has been used occasionally in the past as a worm-killer with success but there is some risk of damaging the turf if too much is applied. On areas of undulating turf there is a considerable risk of the copper sulphate running into hollows and causing the grass to be killed in these low parts. The copper remains in the soil and the subsequent re-establish-

ment of grass is difficult. As a result of this one hesitates to recommend the use of copper sulphate for wormkilling.

Caution

Irrespective of which material is used the greenkeeper will have to do the actual job of applying it. It is up to him to see that the right amount of material is used. It is not reasonable to expect an amount of material sufficient for one green to treat three or four greens and still give good results. It is very helpful if a careful note is kept of the quantities applied to each area and if possible a small sample of the material used should be kept. If the results are not all they should be it will be possible to check how much worm-killer has been used and also to check the quality of the material used. Finally, the greenkeeper should always take great care when handling these materials especially the more poisonous ones such as lead arsenate, calcium arsenate or chlordane, taking care to avoid working in dust or spray drift and to wash thoroughly before eating or smoking and to wash in any case when the job has been finished.

SITUATIONS VACANT

MILL HILL GOLF CLUB require an Assistant Greenkeeper. Average earnings around £675, plus rent free flat and free light and heat. Apply to Secretary, 100 Barnet Way, London, N.W.7, giving full particulars of past experience.

MOWBRAY GOLF CLUB, Capetown (Membership 1,000) invites applications for position of Head Greenkeeper. Salary—minimum £80 per month and free 4-roomed flat provided at Clubhouse. Wife, if desirous and competent, can run club catering for own account. Assisted passages provided. Apply by airmail stating when available, to Secretary, P.O. Box 3, Pinelands, Cape Province, South Africa.

FOR HIRE

SISIS AUTOTURFMAN Aerator for hire, £25 per week—Do it yourself. J. B. Burnell, 2 Clarence Road, Eaglescliffe, Stockton on Tees.

CANNOCK FUSARIUM SPECIFIC

THE CANNOCK AGRICULTURAL CO. LTD., CANNOCK, STAFFS.

Send for free illustrated Brochure

Continuing . . .

WHY TURFGRASS RESPONDS TO PROPER USE OF LIME AND SULFUR COMPOUNDS

By Dr **ELIOT C. ROBERTS**
Turfgrass Specialist,
Iowa State University,
Ames, Iowa

*With grateful acknowledgements to
"The Golf Course Reporter"*

Phosphorus

Soil pH has a great effect on the availability of phosphorus to plants. Phosphates are most available from pH 5.5 to 7.5. Above and below these levels phosphates are tied up with other minerals and their availability is reduced. Under acid conditions iron and aluminium phosphates are formed. The solubility of iron and aluminum compounds increases as soils become more acid until they are readily soluble at pH levels from 4.5 to 5.0. Under these conditions the iron and aluminum react with phosphorus and convert it to a form which plants cannot use.

At pH levels above 7.5 phosphates again become less available. It is believed that under these conditions phosphorus is tied up as insoluble calcium phosphates which are unavailable for plant use. In the pH range 5.5 to 7.5 calcium phosphates of a type which are more mobile and available for plant use are formed. Within this range it is likely that the ability of the root to absorb sufficient phosphorus is more responsible for nutritional status of the plant than the availability of soil and fertilizer phosphorus.

It should be noted that at very low soil pH levels increased solubility of aluminum, iron, copper and manganese may result in higher concentrations of these elements than can be tied up with phosphorus. In such instances toxicity to plants may develop. Aluminum toxicity may become particularly serious as excessive amounts of this element are absorbed and precipitated in the conducting tissue as aluminum hydroxide. Deficiencies of copper, zinc, iron and manganese are more likely to occur under alkaline soil conditions.

Potassium

The availability of potassium does not change to any great extent over the normal soil pH range. There is some indication that heavy liming has reduced availability slightly and that under acid soil conditions potassium leaches from the root zone more readily.

Calcium and Magnesium

Calcium availability increases as soils become less acid and more alkaline. In general the quantity of calcium available in the average soil at pH 4, 5, 6, 7, and 8 is relatively as 1 : 4 : 8 : 14 : 22 respectively.

Magnesium availability increases as soils become less acid and more alkaline up to pH 8.5 after which it decreases. In general the quantity of magnesium available in the average soil at pH 4.5, 5.5, 6.5, 7.5, and 8.5 is relatively as 1 : 2 : 3 : 4 : 2½ respectively. The rate of increase for magnesium over the pH range of soil is therefore much smaller than for calcium.

Under acid soil conditions calcium and magnesium may be deficient and as such contribute to unsatisfactory plant growth.

PATISSON

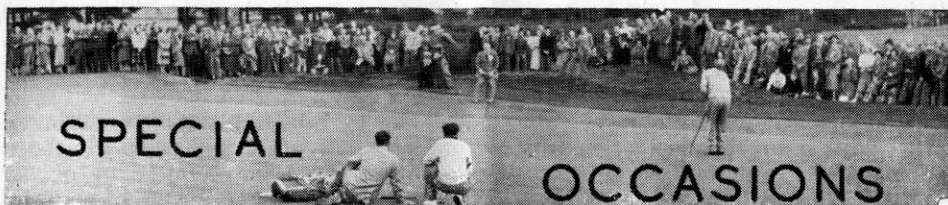
GOLF COURSE EQUIPMENT

Hole Tins	Tee Boxes
Cutters	Tee Plates
Staffs	Ball Cleaners
Mats	Tablets
Mowers	Rollers
Hose	Sprinklers
Mole Ploughs	Rotary Sifters

Aerating Machines
and all

Greenkeeping Tools

H. PATISSON & CO. LTD.
STANMORE · MIDDLESEX
Telephone GRImSyde 4171/4172



AUG. 9-10-11th	Annual Tournament, Whitley Eay.
SEPTEMBER 12th	Autumn Tournament, Southern Section, Moor Park Golf Club.
14th	Northern Section, Annual Match v. Sheffield Section, Scarcroft Golf Club.
14th	North West Section, Autumn Meeting, Manchester Golf Club.
16th	Midland Section, Autumn Tournament, Bloxwich Golf Club.
29th	East Midland Section, Autumn Tournament, Birstall Golf Club.
29th	Welsh Section, Autumn Tournament, Neath Golf Club.
OCTOBER 7th	S.G.G.A. West Section, Autumn Meeting, Pollock.
19th	Northern Section, Autumn Tournament, Leeds Golf Club.
29th	Midland Section, Annual Dinner, King's Head Hotel, Bearwood.

Manganese and Iron

Besides soil pH, soil air and water content, degree of soil compactness and soil organic matter are related to availability of iron and manganese. Since plants require only small amounts of these two nutrients for satisfactory growth, toxicity from their over abundance may be as great a problem as deficiency from their short supply. Excess supply is likely to occur under extremely acid conditions while deficiencies are usually noted within the pH range 7.5 to 8.5. At high pH levels iron deficiency may occur because of an unfavourable iron-calcium balance within the plant which renders the absorbed iron ineffective. In this instance sufficient iron is absorbed, but utilization is prevented.

These deficiencies occur more on sandy soils than on heavier soils and are more likely to be noted in spring and early summer than later in the year.

How to make Soils less Acid

When soil pH levels drop below 5.8, treatments should be made to elevate the pH to 6.5-7.5. Lime is the material most often used for this purpose. Calcitic limestone contains calcium car-

bonates. Dolomitic limestone contains calcium carbonates and magnesium carbonates (equivalent to 15 to 20 percent magnesium oxide). Limestone may be broken down into calcium oxide and carbon dioxide. Calcium oxide is called quicklime. Quicklime plus water yields hydrated lime. Hydrated lime and quicklime are more soluble and faster acting than ground limestone. Mixtures of finely ground limestone and hydrated lime are called Agricultural lime. Actually soil acids in the presence of limestone or hydrated lime produce calcium and magnesium ions which are attracted to the clay particles in exchange for hydrogen ions which react with the carbonate to form carbonic acid. Carbonic acid is weak and slowly breaks up to form carbon dioxide and water.

The chemical composition of lime determines its neutralizing power. The relative neutralizing power of lime has been calculated on the basis of pure calcium carbonate being equal to 100 percent. Accordingly

- 100 lb. of calcium carbonate
- 74 lb. of calcium hydroxide
- 88 lb. of magnesium carbonate
- 56 lb. of calcium oxide
- 40 lb. of magnesium oxide —

all have the same value in correcting soil acidity. The following tables give percent neutralizing value and lb. equivalent to one ton of calcium carbonate.

In addition to chemical composition the particle size of lime affects its reaction in the soil. The finer the particles the faster they react; the coarser the particles the slower they react. A good lime should have some fine particles for immediate reaction and some coarse particles to add residual effect to a treatment. In general a reasonably fine limestone will have a

it is to change it abruptly with one large application. In general the finer the grind the lighter the application or the coarser the grind the heavier the application. Also, applications of finely ground material should be made more often because lasting effects are not as great. Very coarse material may be used on fairways at rates from 150 to 200 lb. per 1,000 square feet. On the basis of fine ground limestone, a safe rule to follow is — increase the rate of application 25 to 50 percent for coarse materials and reduce it 25 to 30 percent for hydrated materials.

Material	Molecular Weight	Neutralizing Value — %	Lb. Equivalent to 1 ton Calcium carbonate
CaCO ₃ Calcium Carbonate	100	100	2,000
MgCO ₃ Magnesium Carbonate*	84	119	1,680
Ca(OH) ₂ Calcium Hydroxide	74	135	1,480
Mg(OH) ₂ Magnesium Hydroxide	58	172	1,160
CaO Calcium Oxide	56	178	1,120
MgO Magnesium Oxide	40	250	800

particle size analysis similar to the following:

100 percent through a 10 mesh¹ screen
75 percent through a 50 mesh screen
60 percent a 100 mesh screen

In using these materials it is well to remember that hydrated lime is fine and thus more soluble in water and faster acting. It is more likely to burn and should never be applied on fairways at rates larger than 50 lb./1,000 square feet. Heavy applications at one time cause the soil at the surface (where the majority of turfgrass roots are located) to become too alkaline. This may tie up phosphorus, iron and other minor elements until the reaction works down into the soil. It is far better to make several smaller applications of lime (25 to 50 lb./1,000 square feet) and change the soil pH gradually than

Late fall, winter, and early spring are the best times to lime. Treatments made while the soil is frozen in the winter usually work well. Spreading lime at this time keeps additional spreader traffic off the turf during the growth season. Never use hydrated lime on fairways at more than 25 lb. per 1,000 square feet during the summer. If necessary other limes may be applied at standard rates during the summer. Never use hydrated lime before or after the application of a fertilizer containing ammonia. The lime will activate the fertilizer and produce ammonia gas which is extremely toxic to turfgrass. It is desirable to lime well in advance of making applications of phosphorus and arsenic. Where treatments with these materials follow closely, an application of lime, they will be less effective because of increased fixation in the soil.

Putting greens should be limed with

¹ Ten openings per linear inch; 100 openings per square inch.

fine ground limestone at from 10 to 50 lb. per 1,000 square feet. Hydrated lime should not be used on greens at rates in excess of 20 lb./1,000 square feet. Where greens have become scalded during the summer, anaerobic soil conditions may be cleaned up with applications of 2 to 5 lb. of hydrated lime per 1,000 square feet. Treatments may be made every week until a total of 10 lb./1,000 square feet has been applied. The material may be mixed with sand to increase ease of spreading.

In addition to lime, gypsum (calcium sulfate) may be used to supply calcium to acid soils. The effect of gypsum on soil pH is one of initial aciduation followed by a tendency for the pH to rise. Soils with poor structure which are slow to drain have been improved by applications of gypsum. Seventy-five to 100 lb. of gypsum per 1,000 square feet worked into wet spots in fairways have helped correct some poor drainage areas.

What determines how much Lime is needed

Since the concentration of hydrogen ions in the soil is responsible for its acidity it is necessary to consider both those ions attached to soil particles as well as those in soil solution. Hydrogen ions in solution constitute the active acidity of a soil. Hydrogen ions attached to soil particles make up the reserve acidity. If only sufficient lime is added to neutralize the soil solution, hydrogen ions will quickly be exchanged from the soil particles to the solution and the pH will return to an acid reading. Only where sufficient lime is applied to neut-

ralize both the hydrogen ions in the solution and on the soil particles will a significant change in soil pH be brought about.

A measurement of soil pH gives only an indication of active acidity. It is necessary to run a lime requirement test in order to accurately evaluate the total acidity (active plus reserve acidity) so that the proper amount of lime may be applied. Lime requirement tests show that a sand and a clay soil may have the same pH but the clay soil requires more lime to bring about a given change in soil pH.

Thus heavier soils and soils with higher percentages of organic matter have higher lime requirements. As soils increase in the percentage of small particles contained (for example sandy soils to loamy soils to clay soils) increasing amounts of lime are required to counteract the reserve acidity. As soils increase in the amount of organic matter, they contain (for example sandy soils of low organic matter to sandy soils of medium organic matter) the quantity of lime required to neutralize the reserve acidity becomes greater. Actually the silt and clay and humus fractions on a soil serve as a buffer system which causes these soils to resist change in pH. Once limed to the proper pH level, they will be more stable and become acid more slowly than lighter textured soil of low organic matter content.

Finally, the more acid the soil the greater amount of lime required to raise the pH to a desired level. These relationships may be noted in Table 2.

R. C. CRAIG

AND CO. LTD.

SPECIALISTS IN THE REPAIR AND
MAINTENANCE OF ALL TYPES OF MOWERS

★ Agents for: RANSOMES, SIMS &
JEFFERIES Ltd.

★ LLOYDS & Co. Ltd.
WEBBS LAWN MOWERS

★ Distributors: DENNIS BROS Ltd.

★ GANG MOWERS FOR HIRE

We will gladly call on you to advise on your grass cutting equipment or arrange demonstrations. Ring us now.

★

**153 Arch Stamford Brook
Station, LONDON, W.6.**

RIVERSIDE 5415

Lb. Sulfur/A	Lb. Sulfur/1,000 sq. ft.	Reduction in Soil pH
100	2	0.20
250	5	0.40
500	10	0.70
1,000	20	1.20

How to make Soils more Acid

Soils which have high pH values can be made more acid by the application of fertilizers containing ammonium nitrogen. This can be accomplished over a period of time on tees and greens by applying from $\frac{1}{4}$ to $\frac{3}{4}$ lb. nitrogen per 1,000 square feet per application. Frequent treatments are usually necessary to provide adequate nitrogen levels over the entire growth season. Attempts to increase the amount applied at each treatment so that the frequency of applications may be reduced often result in foliar burn or in the production of over succulent turf which is subject to injury from adverse climatic conditions. Applications of fertilizers containing ammonium nitrogen may be applied dry with a whirl-wind type spreader or may be spread with a proportioner using water as a carrier. In either case the fertilizer should be washed from the foliage and into the soil immediately following application to each green or tee.

Aluminum sulphate has been used to acidulate the soil; however, rates of application for turf have not been well worked out. This material can be extremely toxic to plants and its use on turf is not generally recommended.

Flowers of sulfur or powdered sulfur may be used effectively to acidulate the soil. It has been used on putting greens and tees where pH levels have been too high for best growth of turfgrasses. Most uniform application may be made by mixing the sulfur with sand or topsoil as a carrier and by spreading the mixture with a whirl-wind type applicator.

It is important that exactly the right amount be applied since sulfur decomposes to form sulfuric acid which in large amounts may produce severe injury to turfgrass stands. Tests with a very fine sandy loam soil to which powdered sulfur was mixed at rates from 100 lb./A to 1,000 lb./A produced the following results:

It was found that the maximum effect of the sulfur on reducing soil pH was evident within one month from the date of application. Tests with heavier soils and with soils higher in organic matter indicate less effect than on the lighter soils with lower organic matter contents.

Applications on turf should not exceed 5 lb./1,000 square feet. Treatments should be made in spring and fall rather than during summer months. Test strips on a turf nursery are advised prior to treating greens. These will enable a careful standardisation of rate of application with existing grass and growth conditions.

Since disease organisms are often more active under acid soil conditions, particular attention should be directed toward disease identification and fungus control during periods of soil acidulation with powdered sulfur.

References

1. Bonner, James and Galston, Arthur W. 1952. *Principles of Plant Physiology*, W. H. Freeman and Company, San Francisco.
2. Donahue, Roy L. 1958. *Soils*, Prentice-Hall, Engelwood Cliffs, New Jersey.
3. Lyon, t. Lytleton and Buckman, Harry O. 1948. *The Nature and Properties of Soils*, The MacMillan Company, New York.
4. Meyer, Bernard S. and Anderson, Donald Nostrand Company, New York.
5. Millar, C. E. and Turk, L. M. 1943. *Fundamentals of Soil Science*, John Wiley and Sons, New York, N. Y.
6. Pettinger, N. A. 1935. *A Useful Chart for Teaching the relation of soil reaction to the availability of plant nutrients to crops*. Bulletin No. 136 V.P.I. Blacksburg, Virginia.
7. Russell, John E. 1950. *Soil Conditions and Plant Growth*, Longman's Green and Co., London, England.

PREDICTION

*When one day at Heaven's gate
St Peter meets the Coach,
He'll hear "Now Peter, get this straight—
It's all in the approach"!*

—Anita Raskin

News



from the Sections

WELSH

By S. A. Tucker

Chairman:
M. GEDDES
(Royal Porthcawl)

Hon. Secretary:
36 Clase Road
Morriston
Swansea, Glam.

Autumn Meeting

I AM PLEASED TO LET YOU KNOW that we will be holding our Autumn Meeting at the Neath Golf Club by kind permission of the Captain and Committee. Will all members wishing to attend let me know in good time. The meeting is on Wednesday, 29th September and I hope all members will make an effort to attend.

Subscriptions

Will all members who have not paid their subs. please forward them to the following address:— M. Geddes Esq., 23 Fenton Place, Porthcawl, Glam. I would remind members that they are not entitled to play in the competition unless subscriptions are paid.

NORTHERN

By J. Parker

Chairman:
S. BAILES

Hon. Secretary:
8 Goit Stock Terr., Harden
Bingley, Yorks.

Autumn Tournament

THE ANNUAL AUTUMN TOURNAMENT of the section will be played over the course of the Leeds Golf Club, Cobble Hall, on Tuesday, 19th October (by kind permission of the Committee).

Handicaps

The following changes of handicaps have been made:— F. Cox 15 to 18, M. Brown 9 to 8, S. Smith 11 to 13, F. Kenny 17 to 21 and J. Readhead 15 to 18.

Course of Instruction

I have reserved two places for members of the section wishing to attend the Course of Instruction to be held at the Sports Turf Research Institute, Bingley from 25th to 29th October. The section will pay for the Registration Fee but members attending will be responsible for other expenses. Anyone wishing to attend should forward his name to me not later than 1st September.

SOUTHERN

By W. Mason

Chairman:
W. E. MOORE
(Romford)

Hon Secretary:
18 Albert Road, Hendon, N.W.4
Tel.: SUNnyhill 0245

Autumn Tournament Entries

AT OUR SPRING MEETING I GAVE out entry forms for the Autumn Tournament to be played at Moor Park on 12th September. Will members who wish to take part please fill in same and return to me, the closing date for entries will be Monday, 23rd August and the draw will take place on 24th. Only these printed forms are accepted for entry and only members whose subscriptions are paid will be entitled to play.

New Members

We welcome to the section the following new members, B. E. Payne and D. M. Craig, of Beaconsfield Golf Club, P. C. French and R. F. Parks, of Lullingstone Golf Club.

KEEP'S

CHLORDANE

CONCENTRATED WORMKILLERS
also kill LEATHER-JACKETS



**SELECTIVE
WEED KILLERS**



GRANULAR FERTILISERS



**AUTUMN GRASS
FERTILISER**



**MAXWELL M. HART
(LONDON) LTD.**

WINNERSH, WOKINGHAM
:: :: BERKSHIRE :: ::

Telephone: West Forest 4242
STD Dial ORE 4314242

SHEFFIELD

Chairman:
G. HERRINGTON
(Lindrick)

By J. J. Dearlove
Hon. Secretary:
63 Langsett Avenue
Sheffield, 6

Stableford Competition

BY KIND PERMISSION OF THE Rotherham Golf Club Committee an 18-hole Stableford competition was played over the Thrybergh Park Golf Course on Tuesday, 29th June.

Twenty-five members teed off for the President's Prize, a silver salver, the weather was to order and the course looking very impressive and inviting.

Unfortunately for us, our President was unable to be with us but was, I believe, concluding a holiday. It is my pleasure to pass on the many thanks to Mr Shardlow for affording us this very popular competition, I am sure everyone enjoyed it very much.

Our thanks are also extended to Mr Bernard Elliot for being with us throughout the day, his contribution to the Prize Fund, presenting the prizes and generally presiding, also to home Professional Roger Jennings for his contribution and free use of the trolleys.

The scoring was only average for such a fine day but there was no one playing well enough to prevent Des Thomson finishing in top spot with 33 points from scratch. The Prize Fund was allocated as follows in voucher form :— D. Thomson, 33 pts, £3 and Salver; J. Lomas and B. Crookes, both on 30 pts, £2 10s.; F. Crookes, 29 pts, £1 10s.; A. Spencer, R. Whitehead, C. Chappell and J. Waddoups all on 28 pts, received £1 vouchers; T. Stringer with 27 pts received a pair of shoe trees.

I have just received an apology from the Captain of Thrybergh for not being with us at dinner, but, due to unfortunate circumstances he did not receive my invitation until after the event.

MIDLAND

Chairman:
G. HART
(Gay Hill)

By F. Cashmore
Hon. Secretary:
76 Four Oaks Common Road
Sutton Coldfield, Warwickshire

President's Match

WE AGAIN HAD A VERY ENJOYABLE evening at Handsworth on 22nd June. I expect this is old news as we had the pleasure

of having our Editor with us, his report and the results were printed in last month's journal. The only thing left for me to say is thank you to members of both teams and the visitors for coming and doing honour to Mr Carl Bretherton, which by his work and interest in golf and greenkeeping he fully deserves.

Autumn Tournament

By the kindness of the Bloxwich Golf Club our Autumn Tournament will be held on their course on 16th September. Please let me have your entries by 6th September, and let us try to make it a record entry.

News of the World Draw

If you have not returned the counterfoils already, do so at once together with money for same. The draw takes place on 16th August.

New Member

We welcome to the section David Bramwell who is an apprentice at Little Aston Golf Club, we hope to see him taking part in our many activities.



EDINBURGH

FIBREGLASS FLAGSTAFFS
GRASS COMBS
GOLF FLAGS
AND SWITCHES

NEW TURF SWITCH 'St Andrew'

*Metal Shaft, Fibre Glass Tip,
Length Adjustable*

£4 15s. each

STEWART & CO.,
SEEDSMEN LTD.
EDINBURGH, 2

NORTH-WEST

Chairman:

D. PATE

(Royal Birkdale G.C.)

By H. M. Walsh

Hon. Secretary:
78 Hadfield Street,
Oldham, Lancs.

Autumn Tournament

THE AUTUMN MEETING WILL BE held on the 14th September at the Manchester Golf Club, Hopwood Park, Rochdale Road, Middleton, near Manchester and will consist of a 27-hole competition, 9 in the morning and 18 in the afternoon.

Below is a route map to course from Manchester and district.

Associate members are very welcome to play in a special competition. Members are reminded that they are limited to one friend, whose competition will be over 18 holes.

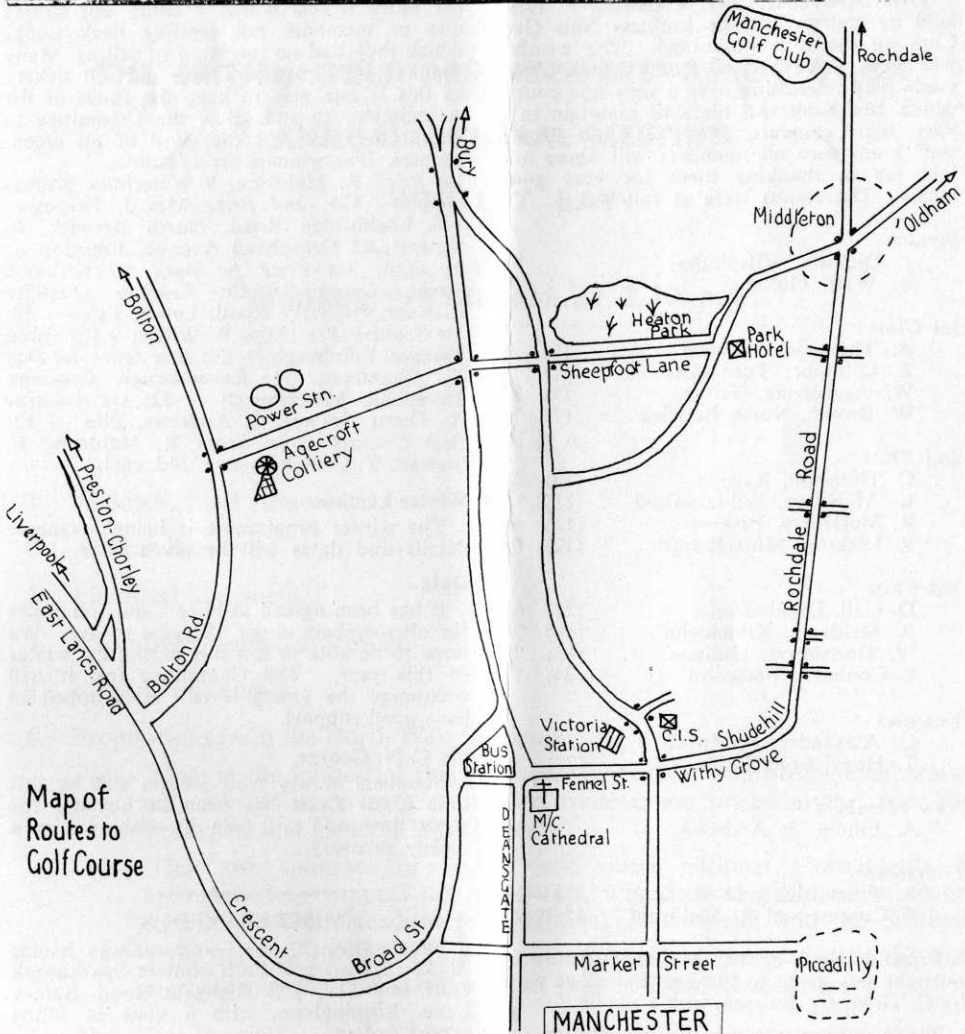
This notice is inserted so that members can note the date in their diaries, and at the same time inform me as early as possible if they will attend so that I may carry out the catering arrangements etc.

Our thanks are due to the Captain and Council for extending to us the courtesy of their course and club house, and for myself I think I can promise you a good game of golf.

New Member

We welcome to the section Harry Wade of Royton Golf Club and hope he will enjoy his stay with us.

How to get there



Map of Routes to Golf Course



THE SCOTTISH GOLF GREENKEEPERS ASSOCIATION

Chairman:

D. L. MACDIARMID
Royal Burgess Golfing Society
Barnton, Edinburgh, 4

General Secretary:
R. B. MOFFATT

71 Kelton Street, Glasgow, E.2

Annual Tournament

THE ANNUAL TOURNAMENT WAS held by courtesy of the Luffness New Golf Club on the 16th June 1965. The weather was fine with a very strong wind which made play interesting over a very fine course which Jim King and his staff maintain in a very high standard. To the Club House staff I am sure all members will agree and join me in thanking them for very good meals. The results were as follows:—

Scratch

J. Dickson, Kilspindie	75
R. Watt, Gullane	76

1st Class

A. Thomson, Luffness	(9)	71
E. Gilmour, Turnhouse	(7)	74
W. Armstrong, Troon	(9)	75
W. Brown, North Berwick	(7)	76

2nd Class

C. Thomson, Ralston	(13)	68
K. McNiven, Williamwood	(11)	69
R. McGorry, Erskine	(13)	69
R. Dickson, Musselburgh	(12)	69

3rd Class

D. Gall, Dumbarton	(22)	68
R. Meldrum, Kilmacolm	(18)	70
W. Donaldson, Gullane	(18)	72
E. Connor, Kilmacolm	(24)	73

Veterans

G. Alexander, Prestwick	(20)	74
T. Hogg, Longniddry	(22)	74

New Members

A. Finnie, St Andrews	103
-----------------------	-----

Foursomes

R. Fitzpatrick and R. Scott	38-4-34
E. Connor and R. Meldrum	45-10-35

Prize donated by Mr Hinton to be won outright was given to the best net score won by C. Thomson, Ralston, with a net 68.

Trade putting was won by Mr Phillips.

Prizes donated by Luffness Golf Club were to be used for each class and the Committee present agreed to give them for the highest score returned in each class.

1st Class D. Wright, Kingsknowe	97
2nd Class J. Adamson, Bathgate	103
3rd Class J. McAtamney, Hayston	154

Once again the Committee thank the Luffness Golf Club and all the Trade for the donation of prizes for the Tournament. I would also like to thank all members of the trade for taking over and allowing me to play and enjoy the day.

Open Draw

Once again the Open is over and we have had the usual Draw. I am sorry to have to say the response this year has not been so good. With more members and all tickets which numbered 10,000 sent out we hoped for better results. Some members sent back for more tickets which I could not supply due to members not sending back books which they had no intention of selling. Many thanks to all members who did sell tickets, as this is one way to keep the funds of the Association up and allow the Committee to do all they can for the good of all greenkeepers. The winners are as below.

1st Prize R. Meldrum, 9 Waterfatts, Kilmacolm — £15; 2nd Prize Mrs J. Ferguson, 146 Lochbridge Road, North Berwick, F. Stewart, 42 Greenhead Avenue, Johnston — £5 each; 3rd Prize A. Stark, 97 Kirkloch Street, Carnoustie—£5; *Leading Qualifier* L. Kerr, Carberry Road, Leven, Fife — £2; *1st Scottish Pro.* Miss B. Wilson 9 Comiston Terrace, Edinburgh — £2; *Best Score 1st Day* T. Chambers, 11 Ravensheugh Crescent, Levenhall, Musselburgh — £2; *1st Amateur* A. Thom, Joiners, St Andrews, Fife — £2; *Best Championship Score* R. Meldrum, F. Stewart, T. Chambers — 13/4d. each.

Winter Lectures

The winter programme is being arranged, details and dates will be given later.

Quiz

It has been agreed to have a quiz on paper for all members under 18 years of age. We hope to be able to run this during the winter of this year. The Committee feel it will encourage the young boys. It is hoped to have good support.

Mr C. N. George

Members in the West section will by this time know Cecil has been in hospital for some time and will join in wishing him a speedy recovery.

MISCELLANEOUS

PROFESSIONALS AND GREENKEEPERS having stocks of used golf balls contact Sparkbrook Golf Ball Co., 295 Highgate Road, Stoney Lane, Birmingham, with a view to filling export orders.



HON. SECRETARY'S NOTES

I am sure that all members will wish to join me in offering sincere congratulations to Jack Noakes and two members of his staff at Thorndon Park Golf Club, who have all received gold watches in appreciation of forty year's service with their Club.

THE BRITISH GOLF GREENKEEPERS' ASSOCIATION

ANNUAL GENERAL MEETING

WHITLEY BAY

Monday 9th August at 2.30 p.m.

A G E N D A

1. Minutes of last Annual General Meeting.
2. Annual Report.
3. Financial Statement.
4. Executive Committee Report.
5. Election of Officers.
6. Propositions from the North West Section.
 - (a) That, in the interest of this Association, its unity and professional status, we seek affiliation to a recognised trade union organisation. (i.e. The Transport and General Workers.)
 - (b) That the sponsors of P.G.A. and other national tournaments be approached to support our prize lists, any support given to be shared equally between Headquarters National Tournament and the Sections.
 - (c) That the title of Golf Course Superintendent be designated to the man in charge of the course. (i.e. as at present Head Greenkeeper).
7. Any other business.



Mrs. Greenkeeper's Own Corner

with Ann Mawson

If you are lucky enough to have raspberry canes in the garden, you can make some quite economical dishes. They should, if possible, be used the same day as they are pulled because they deteriorate very quickly, especially in damp weather. Choose a dry day for picking them if they are to be used for jam.

Raspberry Jelly

4 lbs. raspberries — sugar.

Pick over the fruit but do not wash. Place in a preserving pan and bring to boiling point slowly, stirring all the time. Simmer until the fruit is well broken. Then strain through two layers of muslin. Measure the liquid and to every pint add one pound of sugar. Heat the liquid and bring to boiling point, boil rapidly for about five minutes, test for a set. Pour into warm jars and cover when cool.

Time — About 1 hour.

Raspberry Flan

1½ lb. raspberries — 3 oz. sugar—
carmine.

Make a flan case. Pick the raspberries

and lay them on a flat dish (reserve a few for decoration). Sprinkle over half the sugar and set aside for thirty minutes. Put the remaining sugar in a small pan with the liquid which has come from the soaked raspberries; boil until syrupy, add a drop of carmine. Place raspberries in the flan and coat with the syrup.

Raspberry Vinegar

4 lbs. raspberries — 2½ pints of vinegar — sugar.

Place half the fruit in a large stone jar and add the vinegar; cover and set aside overnight. Strain and pour the liquid over the remaining raspberries, cover and stand overnight. Strain the liquid through muslin and place in a large earthenware jar. To every pint of liquid add one pound of sugar. Place in a pan and bring to the boiling point, reduce the heat and allow to simmer very slowly for ½ hour; remove from heat. Bottle and cork down. Dilute to taste when using. This is most useful in the winter for colds, take it hot just before going to bed.

— Until September . . .



ESTABLISHED Tradition

is important to our highly skilled team of maintenance and service engineers.

Immediate delivery of spare parts—from the largest stock of spares in the trade.

An immediate service exchange assembly (engines, cutting cylinders, magnetos, etc.). Reliable maintenance service to keep your equipment in top working order.

Our Service Engineers and Demonstrators are available at any time. H.P. facilities available.

**NEW EQUIPMENT
ALWAYS IN STOCK**

Distributors and Authorised
Repair Agents to Ransomes,
Sims and Jefferies. Official
London Area Distributors for

Ransomes

Specialist Machines

Main Agents and Distributors
for Clinton and Briggs &
Stratton Engines
Officially Appointed Service
Depot, for

VILLIERS & J.A.P.

Industrial and Agricultural
Engines



RELF AND KENDALL

406 BRIGHTON ROAD, SOUTH CROYDON, SURREY. CRO 0578

11 STATION ROAD, NEW BARNET. BARNET 8228

Members of the British Golf
Greenkeepers' Association



Members of the National
Association of Groundsmen

Contractors to: Municipal Authorities, Sports Clubs, Golf Clubs, Reconditioning and
Maintenance of all grass cutting equipment



BY APPOINTMENT
TO HER MAJESTY THE QUEEN
MANUFACTURERS OF AGRICULTURAL
& HORTICULTURAL MACHINERY
RANSOMES SIMS & JEFFERIES LTD

Ransomes

7'2" CUT MOTOR TRIPLE WITH 3 POWER-DRIVEN CUTTING CYLINDERS CUTS 3 ACRES PER HOUR!



This very high maximum cutting performance plus a remarkably tight turning circle makes the Ransomes Motor Triple outstandingly versatile for small parks or golf courses, sportsgrounds and similar grass areas; anywhere in fact where a great deal of cutting has to be done quickly and efficiently.

STANDARD or BANK models available both with diesel engine.

Remember! When you invest in a Ransomes machine you buy from a range of mowers which cover all your cutting requirements.

Ask your Ransomes Area Sales and Service distributor for a demonstration or write to:

RANSOMES SIMS & JEFFERIES LTD · IPSWICH

TELEPHONE: IPSWICH 54711 TELEX: No 18174