

NEWS AND NOTES



W. F. Lovelady, a native of the Lancashire golf coast, who went to Southport Old Links last year as Head Greenkeeper, has now been appointed Professional as well. We wish him all good luck in his additional responsibilities.

Mr. W. J. Gardner, M.B.E., Hon. Secretary of the Artisan Golfers' Association, tells us that the Lindrick Artisans' Golf Club, with the full approval of the parent club, has bestowed honorary life membership on George Herrington for his long and loyal service to

their club and to the course. All our members will join us in congratulating George on this honour.

Mr. Gardner also tells us that the form of the J. H. Taylor Memorial, for which a considerable sum was subscribed by the Artisan Golfers' Association, will be one large and one small engraved silver Chalice for the Parish Church at Northam. J.H. sang in the choir in this church for many years and a happier remembrance could certainly not have been devised.

FOR SALE

One Bedford vehicle outfit complete with 5 Ransomes Gang Mowers. £300.
Box No. 140.

GREEN ORE (Somerset) fibrous turf loam; J.L. Composts; Grass turf for lawns. Fine soils for Bowling Greens, Cricket Pitches. Bulk supplies always available. Details: Smith's Horticultural Works, Green Ore, Near Wells, Somerset. Phone: Chewton Mendip 378/9.

MISCELLANEOUS

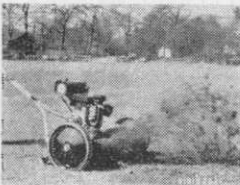
PROFESSIONALS AND GREENKEEPERS having stocks of used golf balls contact Sparkbrook Golf Ball Co., 295 Highgate Road, Stoney Lane, Birmingham, with a view to filling export orders.

"SISIS"
REGD PATENTS

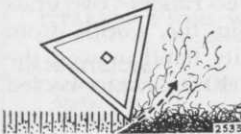
ROTORAKE

TRADE MARK

A Vertical Turf Fibre Cutter



DIRECTION OF TRAVEL



"SISIS" Patent with tine action cutting upwards.

For many years Professional Groundsmen have raked and mown grass in an attempt to reduce turf fibre.

The "SISIS" ROTORAKE is designed to achieve this - the cutting tines rotating upwards, sever the unwanted fibre and prostrate growth below the surface.

This principal holds the machine to the surface and cuts away fibre with maximum effect and surface clearance.

- REMOVE EXCESS FIBRE
- REDUCE TRAILING WEEDS
- ELIMINATE SURFACE NAP
- MAKE MOWING MORE EFFICIENT

IMPROVE TURF STANDARDS AND THE RUN OF THE GREEN

Both 14" and 20" Models have a 4-stroke engine and optional fibre collector.

Full details sent on request:

"SISIS" Patent EQUIPMENT,
W. HARGREAVES & Co. Ltd.,
MACCLESFIELD - 6363 - CHESHIRE

"SISIS"
PATENT
EQUIPMENT