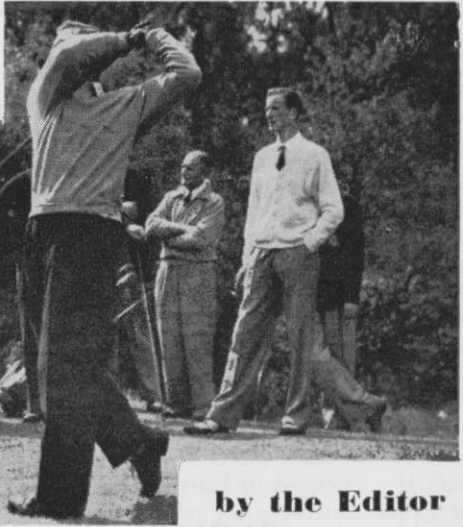


TEE SHOTS



by the Editor

Camperdown Park, Dundee, municipal golf course is not paying its way. The Parks Committee have decided to increase the charges at Caird Park 18-hole golf course to coincide with Camperdown.

Mr. A. S. Dow, parks director, said Camperdown was less popular than Caird Park and the increases would give the newer course a chance to compete.

* * *

The golf course at Felixstowe Ferry may be offered to Felixstowe U.D.C. in the near future. A take-over suggestion has been made and discussions are likely.

The course is administered by trustees who lease the area to Felixstowe Ferry Golf Club, who will probably be given the first offer. But the cost of maintenance is likely to deter the club.

* * *

Walsall Parks Committee is proposing to consent to a £40,000 golf practice centre on land off Sutton Road. The company would pay the cost and pay the council ten per cent of the profits, and the rent of £1,000 a year.

The centre would cover 15 acres near the Grange Playing Fields.

* * *

Barnsley Municipal recruits new members at 50 a month—many of them miners. The corporation has turned down an appeal to close membership on grounds of overcrowding.

* * *

Chipstead Golf Club's application to the council for help in acquiring 21 acres of land off Coulsdon Lane, which could afterwards be leased to the club, has been rejected at a meeting of the Parks Committee on 11th May. The club wanted the land to build a pavilion to serve the golf course.

* * *

East Kilbride Development Corporation is to build a new 18-hole golf course and offer it for rent to the present club, whose ground is scheduled for housing.

The site of the new course is at Torrance House, a mile south-east of the town.

* * *

Residents in Bradway, Sheffield, are protesting over Sheffield City Council's proposal to lease 13 acres of the recreation ground to a private firm who wish to build a driving range. There are now three golf courses in the immediate vicinity and the nearest park where children can play is nearly a mile away.