

MARCH
1963 1/-

The
British Golf

Greenkeeper

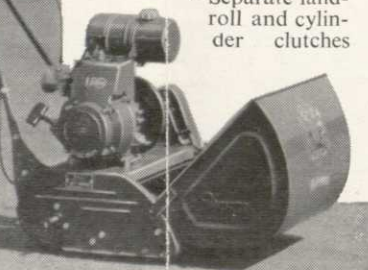
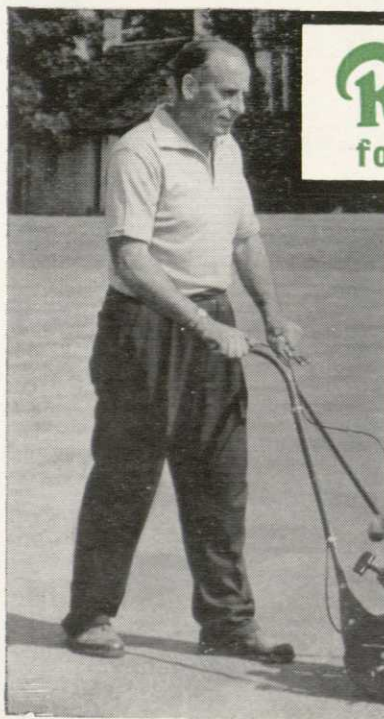


Ransomes Auto Certes for a cut ABOVE the average

and this is why-

- * Specially designed for cutting Golf Greens and similar fine turf.
- * High speed 10-knife cylinder specially hardened for long life giving 106 cuts per yard.
- * Separate land-roll and cylinder clutches

- which allow machine to continue cutting with land-roll drive disengaged. Cutting unit disengages when machine is being self-driven.
- * Accurately machined front and land-roll to avoid damage to the finest turf.
- * Powerful 4-stroke engine.
- * Powered transporting wheels can be fitted instantly.
- * Adjustable handles.
- * Up to 2,000 sq. yards cut in 1 hour.



BY APPOINTMENT
TO HER MAJESTY THE QUEEN
MANUFACTURERS OF AGRICULTURAL
& HORTICULTURAL MACHINERY

RANSOMES SIMS & JEFFERIES LTD., ORWELL WORKS, IPSWICH

DON'T LEAVE IT TOO LATE!



NOW is the time to get your mower in for that overhaul—carried out by skilled engineers—1963 tools and equipment. Over 10,000 spares in stock. Fleet transport for immediate delivery.

IT'S EXPERIENCE THAT COUNTS

RELF & KENDALL HAVE THE ANSWER WITH THEIR

2-PLUS

REPAIR SERVICE

1. Exchange Assembly Service of Engines, cutters, Magnets, Gear-boxes, etc.
2. Express workshop facilities and delivery of spares.

Ransomes

Authorised service Repair Agents.
Sales, Spares and Service

Officially Appointed
SERVICE DEPOT for

Villiers & JAP

INDUSTRIAL AND AGRICULTURAL
ENGINES

Main agents and distributors for
Clinton Engines, Spare parts and service
exchange assemblies now available
from stock

RELF AND KENDALL

406 BRIGHTON ROAD, SOUTH CROYDON, SURREY. CR0 0578
11 STATION ROAD, NEW BARNET. BARNET 8228

Official London Area Distributors to Ransomes,
Sims & Jefferies for specialist machines.



Agents for Dennis, Shanks, Greens,
Atco, Lloyds and Allen Motor Scythes.

THE BRITISH GOLF

GREENKEEPER

HON. EDITOR: F. W. HAWTREE.



FOUNDED 1912.

PUBLISHED MONTHLY FOR THE BENEFIT OF GREENKEEPERS, GREENKEEPING AND THE GAME OF GOLF BY THE BRITISH GOLF GREENKEEPERS ASSOCIATION

President:
CARL BRETHERTON

Vice-Presidents:
SIR ROBERT WEBBER, J.P., D.L.
SIR WILLIAM CARR
R. B. DAWSON, O.B.E., M.S.C.,
F.L.S.
GORDON WRIGHT
F. W. HAWTREE
S. NORGATE
I. G. NICHOLLS
F. V. SOUTHGATE
P. HAZELL
W. KINSEY
R. C. AINSWORTH

Chairman:
D. G. LORD,
Swansea Bay, G.C.

Vice-Chairman:
G. T. Geddes,
Moor Allerton, G.C.

Hon. Secretary & Treasurer:
C. H. DIX,
Addington Court G.C.
Featherbed Lane,
Addington, Croydon, Surrey

Executive Committee:
Carl Bretherton (President),
G. Herrington, J. G. Bryan, E. H.
Benbow, G. J. O'Gorman, S. T.
McNeice, O. P. Jones, B. V.
Fordham, J. Parker, T. Brennan,
J. Simpson, A. A. Cockfield

Hon. Auditors:
Messrs. STOV, HAYWARD AND CO.,
97-99 Park Street, London, W.1.

Hon. Solicitor:
R. A. BECK,
21 Lime Street, London, E.C.3.

The Association is affiliated to the English and Welsh Golf Unions.

No. 216 New Series

MARCH 1963

"I always think of nature as a great spectacle, somewhat resembling the opera."

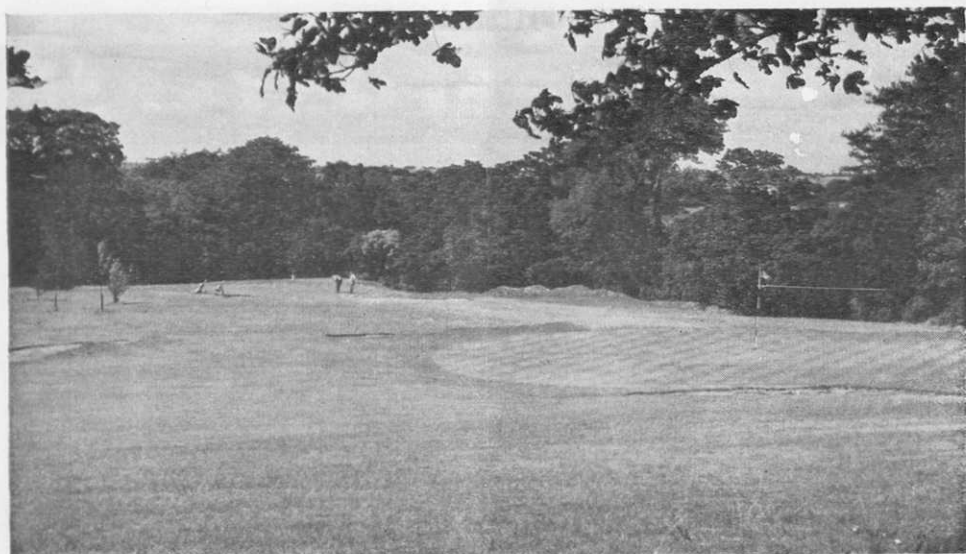
BERNARD DE FONTENELLE.

MARCH CONTENTS

- Page 3 TEE SHOTS.
4 QUESTIONS FREQUENTLY ASKED.
7 NEW DISTRIBUTOR.
8 SPECIAL OCCASIONS.
10 NEWS AND NOTES.
12 SECTION NOTES.
14 SITUATIONS VACANT.
16 SCOTTISH GREENKEEPERS NOTES VIEWPOINT.

EDITORIAL AND ADVERTISEMENT OFFICES: Addington Court Golf Club, Featherbed Lane, Addington, Croydon, Surrey. Telephone: SANDERSTEAD 2690. SUBSCRIPTION RATE: 14/- for 12 issues post paid. Published during the first week of each month. LATEST COPY DATE: 8th of month prior to insertion. All rights reserved. Reproduction of original articles and photographs in whole or in part is prohibited. This Magazine shall not, without the written consent of the Publishers first given, be re-sold, lent, hired out, or otherwise disposed of. Contributions and photographs of interest are invited.

TO INSERT A CLASSIFIED ADVERTISEMENT, write to the Advertisement Manager at the above address. The rate is 6d. per word (minimum 15 words). Box Number, 1/6d. extra. Remittance must be sent with order. Please state number of insertions required and write advertisement in block letters. Advertisements will be inserted in the first available issue.



**"Better than anything
on the market
at the present time" . . .**

Lancashire Golf Club recommends HI-GROW and SEAGROW to all Golf Clubs.

First-hand testimony to the results achieved with HI-GROW and SEAGROW. The secretary writes:

"We consider that Hi-Grow and Seagrow fertilisers are better than anything on the market at the present time. We would have no hesitation at all in recommending Hi-Grow for use on the fairways throughout the growing season. Seagrow has been used on newly made and old established greens and this has produced marvellous results. Our greens have received praise from everyone because of the marvellous results, and the beautiful colour which has been maintained throughout the winter. We have no hesitation in recommending your fertilisers to all golf clubs".

HI-GROW

The top-quality fertiliser with the exceptionally high N.P.K. content—9% N, 9% P, 15% K.

SEAGROW

A seaweed based fertiliser which has achieved spectacular success.

Write for full technical details and highly competitive prices to

PEAKS OF WIGAN

Peaks—Newtown—Wigan—Telephone 44278



TEE SHOTS



by the Editor

GOLF course watering systems are seldom demonstrated in aeroplanes. Mr. Tim Hilton, Managing Director of British Overhead Irrigation Ltd., contrived, nevertheless, to show us the workings of one of his automatic systems last week in a Viscount on the way to Germany.

The "pop-up" sprinkler came apart in five seconds with the aid of a table knife borrowed from Lufthansa, though a screwdriver and pliers are normally recommended. Dismantling is occasionally necessary to clear the built-in filter surrounding the gears. A small screw adjusts the angle of the sector to be watered from 30° to 330°, the radius of throw being about 40 feet. With three or four pop-ups on a ring main round each green, the whole putting area is covered comfortably—all from black plastic cylinders, four inches long, two inches in diameter, weighing under eight ounces.

Next we saw the remote control valve, which can be operated from the clubhouse through a $\frac{3}{8}$ in hydraulic control tube laid with the mains. The master controller—size again measured in inches—controls nine pairs of greens, watering them in rotation for specified periods at pre-set times, up to a fourteen-day cycle. Thus any quantity of water up to the limit of the supply can be applied daily (or nightly), every other day, weekly and so on up to a fortnight. The cycle then repeats itself. If rain comes, the whole system shuts down.

Draining off in winter can also be arranged automatically in low sections of the mains by valves which open when pressure is shut off.

Incidentally, the additional cost of fully automated green watering when installing a new system can be as low as 20%.



SOLVE ALL **TURF PROBLEMS** WITH -

HUMULL THE ORGANIC **TURF DRESSING**

RECOMMENDED BY LEADING TURF CULTURE EXPERTS
THE ECLIPSE PEAT COMPANY LIMITED
ASHCOTT, P.O. BOX 12, BRIDGWATER, SOMERSET



QUESTIONS FREQUENTLY ASKED

Typical questions and typical answers in the United States will interest greenkeepers here and may give a new angle on treatment. This selection comes from the South Western office of the U.S.G.A. Green Section, one of the five regional offices covering the North American continent. It is reprinted with grateful acknowledgments to the U.S.G.A. Golf Journal. What?

When should overseeding be done in bentgrass greens which are highly infested with *Poa annua*?

The purpose of overseeding with additional bentgrass is to increase the relative population of bentgrass to *Poa annua*. Normally, seeding would be done either in the fall or spring. Seeding during these two seasons should not be discredited or discontinued. However, it is felt that much can be gained from summer overseeding. The procedure followed has been either to power spike in two or three directions to open the turf and permit more seed to contact the soil or to use a verticut with the reel disengaged to accomplish the same effect.

Should a summer aeration be warranted, such an overseeding could be made concurrently. Inasmuch as a very close observation is essential during the summer and especially if the greens are aerified, the possibility of losing seedlings due to drying is reduced greatly.

The rate to seed should be in the range of two or three pounds of seed per 1,000 square feet. While this programme has helped most of those who have tried it, it does not represent a cure-all for *Poa annua*. Rather it is possibly another step in management to discourage *Poa annua*.

Is any benefit derived from winter fertilisation of fairway turf?

Virginia tests have demonstrated that winter applications of fertiliser, even on steep roadside slopes, have had little

leaching loss. USDA tests have shown that such feeding has an unexpectedly important influence—there is a great deal of winter root growth even though grass tops are frozen stiff.

An experiment at the Lawn Institute in Marysville, Ohio, with the application of high rates of urea to frozen bluegrass sod in the middle of January resulted in just as attractive a spring turf as did equal amounts of fertiliser applied in March. Also, the effects of this mid-winter feeding continued through the summer in the darker green colour of the experimental area. At least one beneficial effect was that there was no surge of spring growth that aggravates spring mowing.

What kind of topdressing mixture is best for greens?

Once a topsoil mixture is selected and the green constructed, every effort should be made to keep the subsequent applications of topsoil as nearly like the original as possible. The best way to go about this is to exercise great care in selecting the original topsoil mixture so that there will be no need for a change later on.

Much of the guesswork can be taken out of the selection of the proper soil mixture with a physical analysis. Such an analysis measures the porosity, permeability, and moisture retention of a soil mixture. These are important characteristics of any soil mixture; and it follows that it would be much better to test these characteristics before the final selection of a soil mixture is made than to select the mixture, incorporate it in a green, and then have it turn out to be undesirable.

If it should become necessary to change the structure of soil under turf, every effort should be made to avoid any type of layering. At least one method which has been successful is the incorporation of amendments into the soil by placing them in the aerifier holes after a



ATCO

FOR THE GOLF COURSE – and for Life

PARTICULARLY ATCO **GANG MOWERS**

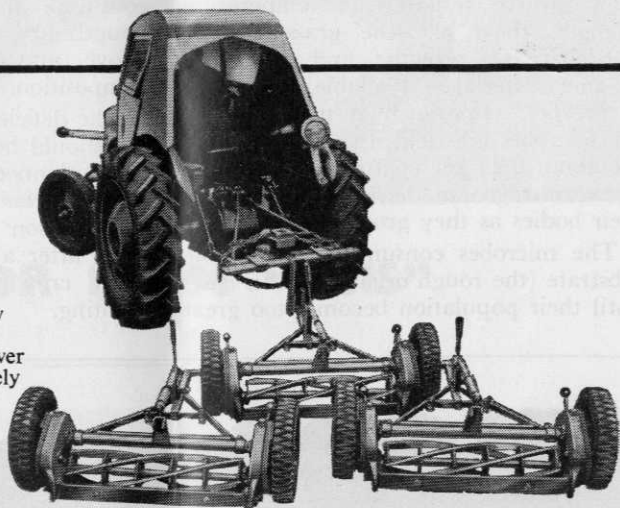
FOR THE FAIRWAYS

There are two models of the new ATCO Gang Mowers available. No. '1' is a general purpose mower and No. '2' designed for extremely heavy duty.

The unique ganging arrangement allows for multiples of one unit upwards making subsequent conversions very economic.

A particularly outstanding feature applied to both models is the totally enclosed all-gear drive. All the gears run in an oil bath which makes for extremely low maintenance in respect of time and cost.

ATCO Gang Mowers are only some of the many machines in the ATCO complete range from the 12" Roller type to the 34" Roller type with a full range of Rotaries, Sidewheels and the Atcoscythe.

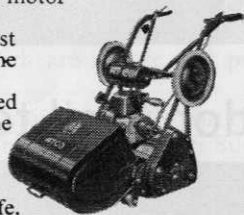


The Triple Gang illustrated costs **£270**

The 20" Special for 'superfine' mowing of greens

This 'self-contained' motor mower has become recognised as the best machine of all for the maintenance of the perfect finish required for the Greens. The specification is complete and will maintain peak performance—for life.

£90



and perhaps most important
of all IMPECCABLE SERVICE

EVERYWHERE there is an ATCO Engineer attached to an ATCO owned Branch ready to advise on any problem in connection with grass cutting.

* DEMONSTRATIONS OF ANY ATCO CAN BE ARRANGED TO SUIT YOU OR YOUR GREENS COMMITTEE

CHARLES H. PUGH LIMITED
P.O. BOX 256, ATCO WORKS, BIRMINGHAM 9

thorough aeration. If this method does not work, complete renovation may be the only answer.

Why does young grass in many greens show a nitrogen deficiency even when greater rates of N are applied than normally required?

In most instances when this occurs, raw or readily decomposable organic matter was used in the mixture. For the most part, organic matter breakdown is dependent upon soil microbes. While their growth responds to temperature changes, they, like the grass, require nutrients for growth; and when an organic material is available, they seem to prosper. Inasmuch as the bodies of the microbes are rich in proteins (which are about 6.25 per cent nitrogen), much of the nitrogen in the soil is tied up in their bodies as they grow.

The microbes consume the available substrate (the rough organic in this case) until their population becomes too great

for it to support. At that point, death of the older and weaker of the microbes begins to occur until an equilibrium in population is established. It is during the period prior to the establishment of the equilibrium that the deficiency develops; during this time supplemental applications of an inorganic and readily available source of nitrogen are warranted.

While much nitrogen can be tied up in proteins and complex nucleo-proteins, later it will become available for turf consumption as those complex compounds are broken down, as described above, and also through chemical decomposition.

The deficiency should not cause alarm but should be expected and its management planned when such sources of organic matter are utilised. It is for this same reason that farmers must fertilize more after a cover crop than when no cover crop was ploughed in prior to planting.



turf to be proud of

Sutton's know about turf. And they operate a special advisory service for groundsmen and those responsible for the condition of grass. But most important, Sutton's provide the right grass seed for any need, and know which seed is right for your soil, your conditions. Buy your grass seeds, fertilizer, weedkiller and dressings from Sutton's.

don't fail to grow **Sutton's**

grass seeds

Post coupon now for FREE catalogue: To Sutton & Sons Ltd. Reading.

B.G.G.-6

name

address

Please send me your free catalogue of grass seeds and turf specialities, also details of your Grass Advisory Service



A

NEW



DISTRIBUTOR FROM "SISIS"

"SISIS 36"—SUPER COULTAS— Model SCD/36

Messrs. W. Hargreaves & Co. Ltd., manufacturers of the well-known "SISIS" patent Equipment for Turf Management have introduced a new precision Fertiliser and Seed Spreader known as the "SISIS 36" Super Coultas.

The trend of fertiliser manufacturers is to increase the concentration of materials, thus requiring a Spreader which will distribute accurately and evenly in a full width carpet at the very low rates demanded. The Super Coultas has been designed to meet this need with a unique degree of accuracy and operates on the well-known Coultas principle, while incorporating the best design features of the "SISIS" Truspred.

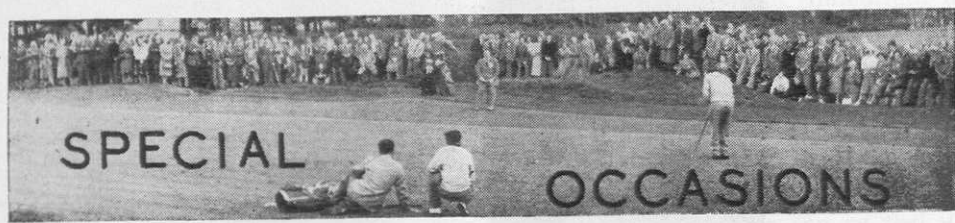
The material is drawn from the extra large capacity hopper by a slow moving, jointless, ribbed, rubber conveyor belt. Final spread is by means of a full width rotary brush. A hand controlled clutch

is fitted to stop and start delivery. A wide range of materials from granular and powder fertiliser, disease and pest controls, grass seed and damp or difficult "clinging" materials can be spread with precision. Spreading rates are controlled by a tilting hopper which varies the aperture between the base of the hopper and the conveyor belt. Rate and adjustment is carried out by finger-tip control dials which are simple and positive.

At the 1962 Exhibition of the National Association of Groundsmen the 36 Super Coultas received the Merit Award as the "Outstanding Production of the Year".

The Super Coultas is designed for pushing or pulling by hand, or can be operated behind the suspension control unit of the "SISIS" Aeromain or Aero-mat.

"SISIS" Model Ref. SCD/36, the Super Coultas sells for £47 10s. 0d. including carriage and packing in crate.



MARCH

- 13th Southern Section, Quiz, Talbot Restaurant, 6-30 p.m.
- 29th Southern Section, Annual Dinner at the Talbot Restaurant, London Wall, E.C.2.

APRIL

- 3rd Welsh Section, Spring Meeting, Clyne Golf Club.
- 4th Midland Section, Spring Tournament, Sutton Coldfield Golf Club.
- 9th Northern Section, Spring Tournament, Woodsome Hall, Huddersfield Golf Club.
- 18th Scottish Golf Greenkeepers' Association (West Section), Annual Spring Competition, Erskine Golf Club.
- 23rd North East Section, Visit to Sports Turf Research Institute.

MAY

- 28th East Midland Section, Spring Tournament, Derby Golf Club.

JUNE

- 11th Midland Section, President's Match, Handsworth.

AUGUST.

- 12th, 13th and 14th Annual General Meeting and Annual Tournament, Royal Birkdale Golf Club.

SEPTEMBER

- 26th Midland Section, Autumn Tournament, Handsworth Golf Club.



<p>AGENTS FOR CROYDEX PLASTIC HOSE & SPRINKLER HOSE WATER TANK CARRIERS GOODENOUGH PUMPS</p>	<p>CLYDE BUILT TRACTOR CABS</p>	<p>ALL MAKES OF MOWERS SUPPLIED AND REPAIRED</p>
<p>Pumping under all conditions</p>	<p>A. C. BANKS & CO. 149 COPSE HILL, WIMBLEDON, S.W.20 TELEPHONE: WIMBLEDON 1768</p>	<p>WIRE BASKETS SAWS CIRCULAR CROSS CUTS SHEARS Repairs and Grinding</p>
<p>TRACTORS FOR GOLF COURSES, SPORTS GROUNDS, PARKS, ETC., and ALL EQUIPMENT FOR MAINTENANCE</p>		

BY APPOINTMENT TO



HER MAJESTY THE QUEEN

SEEDSMEN
CARTERS TESTED SEEDS LTD.



GROUNDSMEN'S EXHIBITION HURLINGHAM
October 3rd and 4th 1962

At the 1962 Exhibition at Hurlingham organised by the National Association of Groundsmen, Carters comprehensive Exhibit, as illustrated, was again awarded the Highest Honours by the Association for display and lay-out.

For the Production of Fine Turf

Carters Tested Grass Seeds, Special Grass Dressings, Fertilisers, Weedkillers and Wormkillers are used by many of the Leading Golf Clubs and Sports Clubs throughout the country.

We invite you to consult our Sports and Advisory Department on any problem connected with the maintenance of Golf Courses, Lawn Tennis Courts, Cricket Squares, Bowling Greens, Sports Grounds and Recreation Grounds.

The 1963 Edition of our illustrated booklet:—

“Treatment of Golf Courses and Sports Grounds”

free on request

Carters
TESTED SEEDS LTD

**RAYNES PARK,
LONDON, S.W.20**

NEWS AND NOTES

NEW WORMKILLER

Fisons Horticulture Ltd. are marketing a new liquid wormkiller, formulated from chlorinated camphere.

Worms die in the ground and casting should have ceased in four weeks after application. Leatherjackets are killed too. The effects of one application may persist several years, though, presumably, it is still too early to know just how many.

The material comes in 1, 2, 5 and 45 gallon packs, price and area treated being as follows:—

1 gallon £3 10 0 treats 1,210 sq. yds.
($\frac{1}{4}$ acre).

2 gallons £6 15 0 treat 2,420 sq. yds.
($\frac{1}{2}$ acre).

5 gallons £15 12 6 treat 6,050 sq. yds.
($1\frac{1}{4}$ acre).

45 gallons £123 15 0 treat 54,450 sq. yds.
($11\frac{1}{4}$ acres).

Application may be by high volume sprayer or watering can after appropriate dilution in water.

The name (why did nobody think of it before, or did they?) is WORMICIDE.

N.A.G. FIELD DAY, MOTSPUR PARK

This year's Motspur Park Field Day will be held on Wednesday, 3rd April, and Ransomes Sims & Jefferies Ltd. will be there as usual showing and demonstrating a wide selection of their grass cutting machinery.

The 18 in. Auto-Certes machine with its world-wide reputation for giving a superb finish on Golf Greens and other fine grass areas is to be exhibited.

The versatile Multi-Mower will be shown with its choice of cutting heads. The Reelcutter attachment is excellent for cutting banks and grass verges while the 27 in. Rotacutter will tackle grass up to 2 feet tall.

Completing the range of heavy duty mowers will be a selection of Gang

Mowers of which Ransomes were the original manufacturers in this country.

The high-quality 18 in. or 20 in. Marquis will be shown. This is used extensively in the upkeep of ornamental lawns.

Ransomes Rotary Mower, the new 18 in. Typhoon Major with its vacuum-lift cutting blades which swing back on the concave disc if an obstruction is met, should receive special attention. It is powered by a 150 c.c. Villiers 4-stroke engine, fitted with oil pump lubrication in the sump.

Another new model on show will be the new 14 in. Ripper Hand Mower; other hand machines on view will be the 12 in. Conquest, 12 in. Ajax and the 16 in. Certes.

SIGN OF THE TIMES

Golf drives out cricket and lawn tennis at Richmond

The Richmond Athletic Association—who own the Richmond golf driving range—have given the four cricket clubs and lawn tennis clubs notice to quit after this summer to make way for an extension of the driving range.

Mr. D. Wheeler, now secretary of the non-profit-making enterprise, explained: "The cricket clubs hardly pay the expense of maintaining their cricket squares, so we are going downhill financially. With business on the driving range booming, we must do this with reluctance. We plan to increase our 12 tees to 20 and install floodlights so during the summer we can play until midnight. A putting green is also planned. With the increased income we will be able to put up a building for the range with changing facilities".

"The Guardian."

WARNING

... It may well be that the spring will bring an exceptional crop of weeds, for frost and snow are great breakers of weed dormancy...

Amateur Gardening—9.2.63.

MERSEYSIDE

“... The frost's unrelaxed grip this time has meant that not a ball has been struck in anger or pleasure, outdoors, for the best part of six weeks. And even grimmer for addicts of which Merseyside has thousands, is the warning by most clubs here that when the thaw comes it will be between ten and fourteen days before greenkeepers will let us play.

These turf-tending experts, always more concerned for the well-being of their beloved greens than with the impatience of members, have left clubs in no doubt that the severity of frost in the ground—in some cases more than twelve inches of it—will make it essential for the ground to be completely thawed out before play is permissible.

This unsuspected postscript delay to the great cold spell will dismay golfers to an even greater extent. Their vexation at being denied a game for so many weeks is assuaged by glances at links

patently unfit for anyone save metal monkeys or for anything except skating and skiing; to have to sit in clubhouses looking (often through picture windows) at green, but still unplayable, courses will be a much harder thing to bear. . .”

Leslie Edwards in the *Liverpool Post*.

FISONS ENTER AMERICAN MARKET

Mr. G. V. K. Burton, Chairman of Fisons Horticulture Limited, announced on 23rd January that his Company had taken “decisive steps to establish their products in the American Horticultural market”. His statement followed Treasury approval of the investment needed by Fisons to secure an 80% share of the equity of the Doggett-Pfeil Company of Springfield, New Jersey, and to provide the working capital necessary to support an extension of its activities. The Company will be re-named Doggett-Fison.

Greenkeepers!

FIRM-CLOSE

B.O.I.L

KEEP GREENS GREEN
-KEEP FAIRWAYS FAIR
-RESILIENT WITH...

high-efficiency Irrigation

No water-no growth. No growth-no grass.
No grass-no turf. It's as simple as that!

For the vigorous growth that makes firm, resilient turf—turf which is the Greenkeeper's pride—irrigation is a *must*—B.O.I.L. Irrigation.

B.O.I.L. equipment is backed by 40 years of practical irrigation experience in all parts of the world. The B.O.I.L. range is wide—planned to meet every Golf Course requirement—from portable sprinklers to complete installations including permanent mains, pumps, etc.

Ask the B.O.I.L. man—an expert irrigation engineer—to advise you on the most efficient and most economical solution to your Golf Course problems. His advice will cost you nothing. Please write or telephone :—

BRITISH OVERHEAD IRRIGATION
LIMITED

UPPER HALLIFORD · SHEPPERTON · MIDDX

Tel : Sunbury 5177/8 (24 hour Ansafone Service)

Cables : Irrigation, Shepperton



News



from the Sections

NORTHERN

By J. Parker

Chairman:
G. W. MASON
(Halifax West End)

Hon. Secretary:
8 Goit Stock Terr.,
Bingley, Yorks.

Grand National Sweep

MEMBERS ARE REMINDED THAT the closing date for the return of counterfoils and monies for the Grand National Sweep is Saturday, 16th March. It is hoped that every effort will have been made to make the Sweep a success.

Spring Tournament

The closing date for entries for the Spring Tournament, to be played over the course of the Woodsome Hall Golf Club on Tuesday, 9th April, is Saturday, 30th March.

January Meeting

Despite the wintry weather, forty members turned up at the White Swan, Leeds, on Tuesday, 15th January, for a film show. The films, presented by Mr. Teddy Foulds, were kindly loaned by Slazengers Ltd. The two films, "Slazenger 279" and "Saving Strokes", featuring Norman Von Nida, were most interesting and thoroughly enjoyed. A vote of thanks to Mr. Foulds was proposed by our Chairman, Mr. G. Mason, and seconded by Mr. E. Mums.

New Appointment

Mr. J. E. Coyer of Cleckheaton Golf Club has been appointed Head Greenkeeper to the Lincoln Golf Club. I'm sure we all wish him the best of luck in his new position.

SOUTHERN

By W. Mason

Chairman:
J. K. GLASS
(Thorpe Hall)

Hon. Secretary:
18 Albert Road, Hendon, N.W.4.
Tel.: SUNnyhill 0245

AS ALREADY MENTIONED IN THE previous journal, the last of our winter lectures will take place on Wednesday, 13th March, at 6-30 p.m. at the Talbot Restaurant. This will be a Quiz with Mr. G. K. Glass as the Question Master, as usual. We look forward to a full house with plenty of problems to be discussed after this very long spell of bad weather.

Arrangements have been made for both our Spring and Autumn Tournaments. The first will take place at the Thorndon Park Golf Club, Essex, on Wednesday, 15th May. Final details will be given in the April journal.

All older members of the Association will be sorry to hear of the death of Mr. Hugh MacLean, who leaves a widow, one son and three daughters. He was Head Greenkeeper at the Sunningdale Golf Club for forty years and, previous to that, was foreman to Willie Parke, who laid out the old course in 1899. On his retirement, his son, Jimmy took over and is still carrying on with the good work. I have written on behalf of the Southern Section and expressed our deepest sympathy.

PATISSON

GOLF COURSE EQUIPMENT

Hole Tins	Tee Boxes
Cutters	Tee Plates
Staffs	Ball Cleaners
Mats	Tablets
Mowers	Rollers
Hose	Sprinklers
Mole Ploughs	Rotary Sifters
Aerating Machines	
and all	
Greenkeeping Tools	

H. PATISSON & CO. LTD.
STANMORE · MIDDLESEX
Telephone GRImmsdyke 400

NORTH-EAST

By T. Oliver

Hon. Secretary:
Heathery Cottage,
Heathery Lane, Gosforth,
Newcastle-on-Tyne 3.

Chairman:
J. SIMPSON
Ponteland G.C.)

Visit to S.T.R.I.

ON TUESDAY, 23rd APRIL, A VISIT to the Sports Turf Research Institute has been arranged. A bus is engaged to leave Newcastle at 8-30 a.m. It can be arranged to pick up en route at convenient places. We shall also welcome members of Golf Club Committees to accompany their Greenkeeper. To enable me to make final arrangements, will members please let me know at their earliest convenience if they are coming and whether accompanied by any of their officials. Lunch and tea will be at the Research Station. Total cost of bus, meals, etc., will be known later. I can thoroughly recommend this visit to all concerned. The officials and staff of the S.T.R.I. are looking forward to meeting us.

I would like to take this opportunity of thanking the Durham County Golf Union Committee for the cheque I received from Mr. W. A. Chrichton, Hon. Treasurer, value £5, as donation to the funds of our Association.

We are very glad to hear that Mr. Allan Harrison is recovering from his illness. We all hope he continues to do so.

Bingley Visit

If it will be more convenient for members of Durham, regarding information for Bingley visit, for seats, please contact Mr. J. L. Lawery, 14 Galloping Green Road, Wreken-ton, Gateshead. I have to attend the Infirmary for treatment on 15th February and hope to be back to normal by then.

Spring Meeting

The Spring Meeting to be held at Hartle-pool—Mr. Nicholson said he would let the Committee know about a suitable date in May.

MIDLAND

By F. Cashmore

Chairman:
G. HART
(Gay Hill)

Hon. Secretary:
76 Four Oaks Common Road
Sutton Coldfield, Warwickshire.

Spring Tournament

OUR SPRING TOURNAMENT IS AT the Sutton Coldfield Golf Club, Streetley, on Thursday, 4th April. Will members please let me have their entries by 25th March. We shall be pleased to have any of our Vice-Presidents join us for 18 holes after lunch. There is a Midland Red bus which leaves New Street at 8-29 a.m., which put you down at Streetley Station and then the club house is about 250 yards up the hill. The service number of the bus is No. 101. There is another bus, the 113, via Perry Barr, leaving at 8-52 a.m. and 9-15 a.m., which after putting you down at the Buccaneer on the Chester Road leaves you a considerable walk down Manor Road.

President's Match

Mr. Bretherton has fixed up his match, Presidents' Team v. Greenkeepers, at Handsworth Golf Club on Tuesday, 11th June, when we can again look forward to a very enjoyable evening.

Autumn Tournament

The Committee of the Handsworth Golf Club have kindly given us the courtesy of their course for playing our Autumn Tournament on Thursday, 26th September. We are extremely grateful for their kindness.

At the time of writing these notes, 6th February, there is not much sign of playing golf. I have not seen any green grass since 26th December, but they say to-night that the thaw is coming, so perhaps you will be able to get some practice in.

MISCELLANEOUS

PROFESSIONALS AND GREENKEEPERS having stocks of used golf balls contact Sparkbrook Golf Ball Co., 295 Highgate Road, Stoney Lane, Birmingham, with a view to filling export orders.

R. C. CRAIG

AND CO. LTD.

SPECIALISTS IN THE REPAIR AND
MAINTENANCE OF ALL TYPES OF MOWERS

★ Agents for: RANSOMES, SIMS &
JEFFERIES Ltd.

★ LLOYDS & Co. Ltd.
WEBBS LAWN MOWERS

★ Distributors: DENNIS BROS Ltd.

★ GANG MOWERS FOR HIRE

We will gladly call on you to advise on your grass cutting equipment or arrange demonstrations. Ring us now.

153 Arch Stamford Brook
Station, LONDON, W.6.

RIVERSIDE 5415

NORTH-WEST

By B. Ellis

Chairman
T. Brennan
(Wilmstow G.C.)

Hon. Secretary
Romiley G.C.

WE WELCOME TO OUR SECTION Mr. W. Earnshaw, who has taken up the post as Head Greenkeeper to the Davyhulme Park Golf Club. His address is 21 Eddisbury Avenue, Flixton, Urmston, Manchester.

Owing to the inclement weather conditions on 21st January, the lecture that should have been given by Mr. Clayton was postponed and we hope to fix it for a later date.

24 members attended the visit to Ellis Rees and a very pleasant afternoon was spent. I hope that, by now, those members who were snowed under are about again.

WELSH

By S. A. Tucker

Chairman:
M. GEDDES
(Royal Porthcawl)

Hon. Secretary:
36 Clase Road,
Morriston,
Swansea, Glam.

OUR SPRING MEETING WILL BE held at the Clyne Golf Club on Wednesday, 3rd April. I would like all members who intend to come, to inform me not later than Monday, 25th March, as I have to let the stewardess know how many to cater for. Please come early in the day, as we would like to play 27 holes. I hope the weather will be much better than it has been of late, so that members can get in some practice. Those coming by bus should go to the United Welsh Garage by the theatre and take a ticket to Mayals Green, then take the road opposite the bus stop up the hill—about 5 minutes' walk.

It is with regret that I have to announce the death of Sir Robert Webber, J.P., D.L., a Vice-President of our Association. I am sure his passing will be a great loss to the Association, particularly the Welsh Section, with whom he had been in close contact for many years.

Members will also have noted with regret from the Southern Section Notes, that Mr. Hugh MacLean, who was Head Greenkeeper at Sunningdale Golf Club for forty years, before his retirement, has died and I am sure they would like to join me in expressing their sincere sympathy to his family.

C.H.D.

KEEP'S

SUPPLEX
CONCENTRATED WORMKILLER
also kills LEATHER-JACKETS



SUPERFINE
MOWRAH MEAL



GRANULAR FERTILISERS



"RECORD" GRASS
FERTILISER



FRANK KEEP (1958) LTD.

82-84 NORTH END
CROYDON, SURREY

Telephone : CROYdon 0734

SITUATIONS VACANT

GERRARDS CROSS GOLF CLUB, Chalfont Park, Gerrards Cross, Bucks., require a Greenkeeper with wife to assist in the Clubhouse. Accommodation available in Clubhouse. Full particulars please to the Secretary.

HEAD GREENKEEPER REQUIRED—
Modern accommodation available. Apply in writing with full details of experience to the Secretary, Lee-on-Solent Golf Club, Brune Lane, Lee-on-Solent, Hants.

GOLF COURSE CONSTRUCTION.—Well known contractors require men to work and train as possible foremen on above interesting work. Must be keen and willing to travel at home and possibly abroad. Start Central Scotland. Reply Box 13.

HEAD GREENKEEPER required for Dyrham Park Golf and Country Club near London. Construction commencing April/May. Accommodation available. Outstanding opportunity for fully experienced successful applicant. Write details of age, experience, salary to Secretary, 6 Goodyers Gardens, Hendon, London, N.W.4.

SPRING DRESSINGS

When both fertiliser and seed are to be spread
When accuracy of distribution is essential
When low rates of application are required
When large areas must be covered quickly

CONSIDER

"SISIS"

REGD PATENTS

FERTILISER AND SEED SPREADERS

With Ribbed Rubber Conveyor Belt and Adjustably Tilted Hopper

For Hand Use :

24" & 36"

TRUSPRED

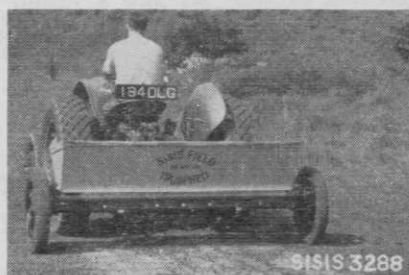
Trade Mark

For Hydraulic Linkage or Towing :

60", 72" & 90"

TRUSPRED

Trade Mark



For Hand Use or with Overgreen Tractor :

36" SUPER COULTAS (incorporating Rotary Brush)

Brochure from :

"SISIS" Patent EQUIPMENT

W. HARGREAVES & CO. LTD.

Macclesfield, Cheshire.

Telephone: Macclesfield 6363

Get on to GIBBS

FOR EVERYTHING

Ransomes



BEDFORD·MIDDLESEX

Phone: Feltham 5071



By Appointment to
Her Majesty
Queen Elizabeth II
Suppliers of
Agricultural Machinery
and Implements

SPECIALIST DISTRIBUTORS AND AUTHORISED REPAIR AGENTS FOR RANSOMES LAWN MOWERS

1894



1963

EDINBURGH

EVERYTHING FOR GOLF COURSES

GRASS COMBS

GOLF FLAGS

GRASS SEED

GRASS MANURE

FIBREGLASS FLAGSTAFFS

AND SWITCHES

STEWART & CO ,
SEEDSMEN LTD.
EDINBURGH, 2



THE SCOTTISH GOLF GREENKEEPERS' ASSOCIATION

Social Evening

THERE ARE A LIMITED NUMBER OF tickets left for our annual social in Nicoll & Smiberts, Dundee on 23rd March at 7-0 p.m. Those wishing tickets and any member with some over, please contact the Committee or myself before 13th March.

New Members

We welcome Mr. R. Cameron, 8 King Street, St. Andrews, and Mr. J. Moffatt, 97 Market Street, St. Andrews.

The Annual Spring Competition of the West Section will be held over the Erskine Golf Club on Thursday, 18th April, 1963.

Viewpoint

The Editor,
The British Golf Greenkeeper.

Dear Sir,

During this exceptional spell of rough weather, I have listened with great interest and, at times, annoyance to the remarks of some members, who think that, because the course is under snow, all the outside staff have to do is to play cards.

I should like to use a small space in the Journal to give these people an insight of what really goes on during hard weather.

Most courses nowadays are equipped (or should be) with good sheds, where the staff can work in all weathers.

With the continued popularity of golf, more materials, especially compost are needed to keep the greens and tees up to the required standard. The average course needs at least 50 tons, which has got to be prepared ready for spring and

summer use; it must be realised, to make compost properly takes a lot of time and a spell like this is very helpful.

Then there is the repairing and painting of the boxes, flag poles, seats, etc. Also, the frames of gang mowers must be kept painted, in an effort to stop rusting.

So that at least one hole can be kept playable, all paths leading to the clubhouse have to be kept clear of snow.

If the weather is not too bad, there is always the job of clearing the bottoms of hedges and lopping off overhead boughs.

This is only a list of the things that must be done, which does not give much time for playing cards.

Yours sincerely,

Jock Glass.

The Cottage,
Thorpe Hall Golf Club,
Thorpe Bay, Essex.

BUYERS' GUIDE

BUNKER DRESSER

SMALLHOLDERS UTILITIES SUPPLY CO., 183
Hammersmith Road, London, W.6.

CLINKER, ETC.

FRANK KEEP, Ltd., 82-84 North End, Croydon,
Surrey.
T. PARKER & SONS, Worcester Park, Surrey.

CONTRACTORS

GILLIAM & CO. Ltd., Purley, Surrey.
J. R. STUTT Ltd., Canford Cliffs, Bournemouth.

EQUIPMENT SERVICING

R. C. CRAIG, Ltd., 30 Aylmer Rd., London, W.12.
GROSVENOR ENGINEERING CO., Manningham,
Bradford, Yorks.
RELF & KENDALL, 406 Brighton Rd., S. Croydon,
Surrey.
T. PARKER & SONS, Worcester Park, Surrey.

FERTILISERS

CANNOCK AGRICULTURAL CO., Ltd., Cannock,
Staffs.
CARTERS' TESTED SEEDS, Ltd., Raynes Park,
London, S.W.20.
ECLIPSE PEAT CO., Ltd., Ashcott, Somerset.
FISONS, Ltd., Harvest House, Felixstowe, Suffolk.
F. KEEP, Ltd., 82-84 North End, Croydon, Surrey.
T. PARKER & SONS, Worcester Park, Surrey.
STEWART & CO., Seedsmen Ltd., Edinburgh, 2.
SUTTON & SONS, Ltd., Reading.

FUNGUS CONTROL

CANNOCK AGRICULTURAL CO., Ltd., Cannock,
Staffs.
CARTERS' TESTED SEEDS, Ltd., Raynes Park,
London, S.W.20.
MAY & BAKER, Ltd., Dagenham, Essex.
T. PARKER & SONS, Worcester Park, Surrey.
SUTTON & SONS, Ltd., Reading.

GOLF TEE MATS

UNIVERSAL MAT CO., Ltd., Tileyard Road,
London, N.7.

GRASS SEEDS

CANNOCK AGRICULTURAL CO., Ltd., Cannock,
Staffs.
CARTERS' TESTED SEEDS, Ltd., Raynes Park,
London, S.W.20.
F. KEEP, Ltd., 82-84 North End, Croydon, Surrey.
T. PARKER & SONS, Worcester Park, Surrey.
STEWART & CO., Seedsmen Ltd., Edinburgh, 2.
SUTTON & SONS, Ltd., Reading.

GREENKEEPERS' TOOLS & COURSE EQUIPMENT

R. C. CRAIG, Ltd., 30 Aylmer Road, London, W.12.
W. HARGREAVES & CO., Ltd., Sisis Works, Cheadle
Cheshire.
H. PATTISSON & CO., Ltd., Stanmore, Middlesex.
T. PARKER & SONS, Worcester Park, Surrey.
STEWART & CO., Seedsmen Ltd., Edinburgh, 2.

INSECTICIDES

CANNOCK AGRICULTURAL CO., Ltd., Cannock,
Staffs.
T. PARKER & SONS, Worcester Park, Surrey.

LEAD ARSENATE

F. KEEP, Ltd., 82-84 North End, Croydon, Surrey.
LUNEVALE PRODUCTS, Ltd., Low Mill, Halton,
Lancaster.
T. PARKER & SONS, Worcester Park, Surrey.

LOAMS & MANURES

T. PARKER & SONS, Worcester Park, Surrey.

MOWER ENGINEERS

RELF & KENDALL, 406 Brighton Road, S. Croydon,
Surrey.
T. PARKER & SONS, Worcester Park, Surrey.

MOWERS

BRADLEY'S, Leeds Rd, West Ardley, nr. Wakefield,
Yorks.
T. GREEN & SON, Ltd., Smithfield Ironworks,
Leeds, 2.
GROSVENOR ENGINEERING CO., Manningham,
Bradford.
LLOYDS & CO., Ltd., Pennsylvania Works, Letch-
worth, Herts.
T. PARKER & SONS, Worcester Park, Surrey.
H. PATTISSON & CO., Ltd., Stanmore, Middlesex.
C. H. PUGH, Ltd., P.O. Box 256, Atco Works,
Birmingham, 9.
RANSOMES, SIMS & JEFFERIES, Ltd., Orwell
Works, Ipswich, Suffolk.

SEA SAND

F. KEEP, Ltd., 82-84 North End, Croydon, Surrey.
T. PARKER & SONS, Worcester Park, Surrey.

SPRAY EQUIPMENT

EVERS & WALL, Ltd., Aldbourne, Marlborough,
Wiltshire.
T. PARKER & SONS, Worcester Park, Surrey.
PRESSURE JET MARKERS Ltd., 152 The Arches,
Stamford Brook, London, W.6

TRACTORS

T. GREEN & SON, Ltd., Smithfield Ironworks,
Leeds 2.
W. HARGREAVES & CO., Ltd., Sisis Works,
Cheadle, Cheshire.
T. PARKER & SONS, Worcester Park, Surrey.
H. PATTISSON & CO., Ltd., Stanmore, Middlesex.

TURF AERATING APPLIANCES

W. HARGREAVES & CO., Ltd., Sisis Works,
Cheadle, Cheshire.
T. PARKER & SONS, Worcester Park, Surrey.
H. PATTISSON & CO., Ltd., Stanmore, Middlesex.

WEED CONTROL

MAY & BAKER, Ltd., Dagenham, Essex.
T. PARKER & SONS, Worcester Park, Surrey.
SHELL CHEMICALS, Ltd., 170, Piccadilly, W.1

WEED CONTROL SPRAYING

EVERS & WALL, Ltd., Aldbourne, Marlborough,
Wiltshire.
T. PARKER & SONS, Worcester Park, Surrey

WORM KILLER

CARTERS' TESTED SEEDS, Ltd., Raynes Park,
London, S.W.20.
F. KEEP, Ltd., 82-84 North End, Croydon, Surrey.
T. PARKER & SONS, Worcester Park, Surrey.
SUTTON & SONS, Ltd., Reading.

ENQUIRY BUREAU.—The Editor desires to point out that he will be pleased to answer enquiries from our readers, and forward to them the name and address of the manufacturer or supplier of any particular proprietary article or product used in the construction, maintenance and upkeep of a golf course. Enquiries are coming in from greenkeepers asking for such information. They may, for example, know the trade name of the article or product they wish to purchase, but may not be conversant with the name and address of the actual manufacturer or supplier. The Enquiry Bureau will gladly supply this information, and thus enable the greenkeeper to contact the manufacturer or supplier direct.

TO MANUFACTURERS.—In order that our information may be kept constantly up to date, manufacturers or suppliers are requested to forward their latest trade lists, catalogues, and any other confidential information regarding their products. By so doing the Bureau will be able to function to the mutual benefit of all concerned.

TRADE REVIEWS.—The Editor will be pleased to arrange to devote space in our editorial columns to a review of our advertisers' products, etc. Will advertisers please forward details for this purpose.

What would the course be like



without **PARKERS?**

Mowers • Motor Scythes, all makes and types • Tractors
Aeration Equipment • Sprayers • Harrows • Sprinklers,
etc., etc. • Mowrah Meal • Lead or Calcium Arsenate
Fertilizers of all types • Grass Seeds of the finest quality
Stock mixtures or to your specification • Loams: Light,
Medium, Heavy, for all purposes, etc., etc.

IMMEDIATE DELIVERIES FROM STOCK

T. PARKER & SONS (TURF MANAGEMENT) LTD

THE SPORTICULTURAL SPECIALISTS

WORCESTER PARK . SURREY . Tel.: DERwent 7791 (6 lines).