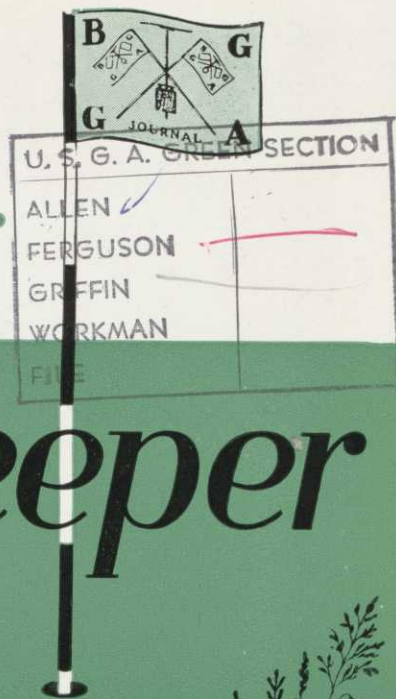
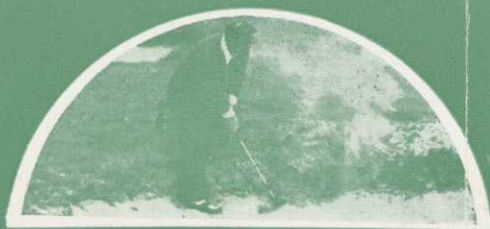


JANUARY
1963 1/-

The British Golf

Greenkeeper

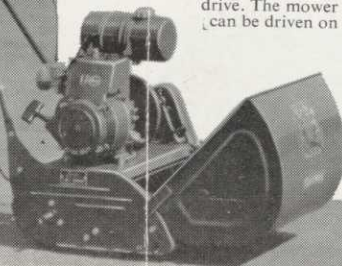
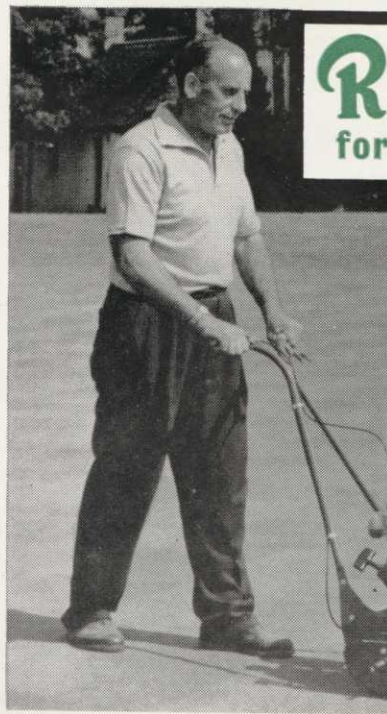


Ransomes Auto Certes for a cut ABOVE the average

and this is why-

- * Specially designed for cutting Golf Greens and similar fine turf.
- * High speed 10-knife cylinder specially hardened for long life giving 100 cuts per yard.
- * A handroll clutch is fitted in addition to the centrifugal clutch in the main drive. The mower can be driven on

- either clutch. Cutting unit disengages when machine is being self-driven.
- * Accurately machined front and land roll to avoid damage to the finest turf.
- * Powerful 4-stroke engine.
- * Powered transporting wheels can be fitted instantly.
- * Adjustable handles.
- * Up to 2,000 sq. yards cut in 1 hour.



BY APPOINTMENT
TO HER MAJESTY THE QUEEN
MANUFACTURERS OF AGRICULTURAL
& HORTICULTURAL MACHINERY

RANSOMES SIMS & JEFFERIES LTD., ORWELL WORKS, IPSWICH