

AUGUST  
1963 1/-

U. S. G. A. GREEN SECTION

ALLEN  
FERGUSON  
GRI-FIN  
WOLFMAN  
FILE



# The British Golf

# Greenkeeper

SPEAKING

**PARKERWISE!**

The Summer Season should be easy to cope with using PARKERS Equipment and preparations "Perfecto" range of golf course equipment from stock.

Brushing and harrowing, mowing, light piercing, preceding watering, weed spraying, fertilising (dry and liquid), marking out, etc., etc.

RANSOMES' official appointed repair agents and specialists distributors for London.

*Truly simple when you  
PARKERWISE  
Immediate deliveries from stock  
Efficient Mower Repairs carried  
out on our own premises*

WHALEBONE BRUSHES—  
DRAGMATS—CHAIN HARROWS  
—MOWERS—Fine precision, Hand or  
Motor—GANG MOWERS—Triple  
to Nonuple—SISIS AERATION—  
WATERING EQUIPMENT from  
Small Rotaries to Self Travelling  
Sprinklers and Spraylines—WEED  
KILLERS 2-4D, M.C.P.A., 2-4D +  
2-45ST and KILL-ALL WEED-  
KILLERS—SPRAYERS in variety,  
from inexpensive hand and knapsack  
to Motorised and Tractor Operated—  
FERTILISERS our own Verdant  
Mixtures and proprietary brands to  
straight ammonia, chalk, etc.—  
MARKERS for all purposes, two  
wheel, three wheel and four wheel.

**T. PARKER & SONS  
(TURF MANAGEMENT) LTD.**

The Sporticultural Specialists  
WORCESTER PARK, SURREY, DERwent 7791

# Why your greens will improve with **NITROFORM**



NITROFORM is the first successful slow-release concentrated nitrogenous fertilizer, requiring in many circumstances only one application per season, lasting many times longer than conventional fertilizers, and not only feeding for healthy turf, but conditioning the soil for greater root growth.

## **HERE ARE THE ADVANTAGES ALREADY FOUND BY BRITISH CLUBS AFTER ONE YEARS TRIAL**

1. High Nitrogen content (38%) released slowly, steadily, by soil bacterial action—one dressing per season can suffice.
2. Easy to handle and spread by hand, spreader or spray.
3. Non-burning—even 3 times the recommended rates is safe.
4. Non-leaching—It is not directly soluble in water.
5. Completely odourless—easily mixed with phosphates and/or potash.

Enquiries for samples, prices, advisory service and soil tests to

**LEATHER'S CHEMICAL CO. LTD.**

100, Canal Road, Bradford 2. Tel: Bradford 23323

NITROFORM is the registered trade mark of Hercules Powder Co. Ltd.

THE BRITISH GOLF

# GREENKEEPER

HON. EDITOR: F. W. HAWTREE.



FOUNDED 1912.

PUBLISHED MONTHLY FOR THE BENEFIT OF GREENKEEPERS, GREENKEEPING AND THE GAME OF GOLF BY THE BRITISH GOLF GREENKEEPERS ASSOCIATION

**President:**  
CARL BRETHERTON

**Vice-Presidents:**  
SIR WILLIAM CARR  
R. B. DAWSON, O.B.E., M.S.C.,  
F.L.S.  
GORDON WRIGHT  
F. W. HAWTREE  
S. NORGATE  
I. G. NICHOLLS  
F. V. SOUTHGATE  
P. HAZELL  
W. KINSEY  
R. C. AINSCOW

**Chairman:**  
D. G. LORD,  
Swansea Bay, G.C.

**Vice-Chairman:**  
G. T. GEDDES,  
Moor Allerton, G.C.

**Hon. Secretary & Treasurer:**  
C. H. DIX,  
Addington Court G.C.  
Featherbed Lane,  
Addington, Croydon, Surrey

**Executive Committee:**  
Carl Bretherton (President),  
G. Herrington, J. G. Bryan, E. H.  
Benbow, G. J. O'Gorman, S. T.  
McNeice, O. P. Jones, B. V.  
Fordham, J. Parker, T. Brennan,  
J. Simpson, A. A. Cockfield

**Hon. Auditors:**  
Messrs. SMALLFIELD RAWLINS AND  
CO., Candlewick House, 116/126  
Cannon Street, London E.C.4.

**Hon. Solicitor:**  
R. A. BECK,  
21 Lime Street, London, E.C.3.

The Association is affiliated to the English and Welsh Golf Unions.

No. 221 New Series  
AUGUST 1963

*"I mean that people as they get older should play a game of golf or tennis or should walk. This is extremely important so far as the Community is concerned."*

THE MARQUIS OF EXETER,  
May, 1963.

## AUGUST CONTENTS

- Page 3 TEE SHOTS
- 4 LIFETIME'S SERVICE to GOLF
- 6 AT LAST—GROWTH ON THE GREENS
- 7 THE NEW "TRULUTE"
- 8 COURSES IN PLAY—II
- 11 SPECIAL OCCASIONS
- 12 NEWS FROM THE SECTIONS
- 15 S.G.G.A.
- 16 A.G.M. AGENDA

EDITORIAL AND ADVERTISEMENT OFFICES: Addington Court Golf Club, Featherbed Lane, Addington, Croydon, Surrey. Telephone: SANderstead 2690. SUBSCRIPTION RATE: 14/- for 12 issues post paid. Published during the first week of each month. LATEST COPY DATE: 8th of month prior to insertion. All rights reserved. Reproduction of original articles and photographs in whole or in part is prohibited. This Magazine shall not, without the written consent of the Publishers first given, be re-sold, lent, hired out, or otherwise disposed of. Contributions and photographs of interest are invited.

TO INSERT A CLASSIFIED ADVERTISEMENT, write to the Advertisement Manager at the above address. The rate is 6d. per word (minimum 15 words). Box Number, 1/6d. extra. Remittance must be sent with order. Please state number of insertions required and write advertisement in block letters. Advertisements will be inserted in the first available issue.

It's  
experience  
that  
counts

## DOES YOUR MOWER MEASURE UP TO YOUR REQUIREMENTS?

Don't put up with an unreliable mower, our repair and service engineers will keep it in perfect working order, or if you must have a new mower our demonstrators will be glad to show you all the latest models.  
H.P. facilities available.

### RELF AND KENDALL

406 BRIGHTON ROAD, SOUTH CROYDON, SURREY. CRO 0578  
11 STATION ROAD, NEW BARNET. BARNET 8228



Main Agents and distributors for Clinton engines. Spare parts and service exchange assemblies now available from stock.

#### AGENTS FOR

**Ransomes**

DENNIS  
QUALCAST  
SHANKS  
ATCO  
LLOYDS & ALLEN  
MOTOR SCYTHES

Officially Appointed  
Service Depot for

**Villiers & JAP**

Industrial and Agricultural Engines

Official London Area Distributors to  
RANSOMES, SIMS & JEFFERIES  
for specialist machines.

**Ransomes**

authorised service repair agents,  
sales, spares and service.

Those who's business it is to keep the mowers cutting will quickly appreciate the very real advantages offered by our maintenance service.

#### OVERHAULS

By skilled engineers

#### SPARES

Enormous stocks of all parts in our new stores

#### SERVICE

Fleet transport for immediate delivery

# TEE SHOTS



by the Editor

It looks as though St. Nom la Bretèche will be choosing their Red Course for the Canada Cup in October. The choice is not an easy one to make, because both of the two 18-hole courses are of identical length, but the Red has rather more contour interest. Crowd control should also be more simple. One or two English travel agencies have already offered all-in prices for a round trip to Paris for this event.

\* \* \*

O. P. Jones is getting ready to move his ninth green this autumn. Bramhall looked very green and tidy when we saw it at the end of last month. Mr. Jones had his troubles like everyone else after the winter, but obviously soon had his greens back in shape.

\* \* \*

Harry Monkhouse looks like losing nine holes out of his Marston Green Municipal Course at Birmingham when the Elmdon Airport, which adjoins, is extended to accommodate jet aircraft. Fortunately, more land is likely to be made available, so Birmingham's position as the leading Authority in England in providing municipal golf courses, will not be affected.

\* \* \*

We should have reported this last month. Douglas Pate of the Royal Birkdale had a week off—not for a holiday, much as he needs it—but serving with eleven others on jury service in Liverpool.

\* \* \*

George Wilson has left Finham Park at Coventry and is taking two weeks' holiday in Angus in Scotland before moving on to fresh pastures which, it seems, will be overseas in France.

\* \* \*

Mr. Escritt, Assistant Director of the Sports Turf Research Institute, has been touring the United States on business during July. Just before he went, he visited three courses in Paris. Mr. Clayton, Senior Advisory Officer, was then touring Holland and Germany, advising on routine maintenance and new courses.

## "LIFETIME'S SERVICE TO GOLF"

*Our President takes his place in  
"The Birmingham Post's"*

### "Midland Portrait Gallery"

**A** GOLF administrator who obtained so much pleasure and satisfaction from playing the game that "I wanted to put something back into it" is Mr. Carl Bretherton, a former Midland Amateur Champion and member of the England team, who has been President of the Warwickshire Union of Golf Clubs since 1936 and of the Handsworth Golf Club since 1951.

His interest in golf began at the Handsworth Club in 1900, when he was only eight years old. He was introduced to the club by Mr. C. A. Palmer, with whom the young Carl lived after his father had died. He was the youngest of four boys who were members of the club at that time, the others being three young members of the Holmes family, Jack, Joe and Don.

"By the time I was 17 I was becoming proficient at the game and was ready to start specialising", Mr. Bretherton says. In the next four years he reduced his handicap from 13 to plus 2, and in 1913 won the Midland Counties' team competition for Handsworth in company with Mr. C. A. Palmer and Mr. F. C. Carr. In that same year he took part in the Amateur Championship for the first time, progressing through four rounds at St. Andrews.

During the 1914-18 War, Mr. Bretherton, engaged in war work in a factory because he had been declared unfit for military service, had no opportunity to play golf. "I hardly touched a club for the four years", he says. "It took me some little time to get going again, for I was not in very good health".

It was in that period immediately after the war that he achieved his greatest successes, however. In 1919 he travelled to Portrush to take part in the Irish Open Amateur Championship and won the event against strong opposition.

With typical modesty, Mr. Bretherton explained: "Of course, I was lucky in the early rounds. The standard of play was not all that high. The third round was the worst from the playing point of view, for I went out in about 42 and was still all square. Then I won the next five holes, which made it look good."

His semi-final victim was Ernest (later Sir Ernest) Holderness, who subsequently won the Amateur Championship twice during the next four years and also represented Great Britain with distinction in several Walker Cup matches. Mr. Bretherton was a convincing winner, by 5 and 4.

In the 36-holes final he met Tommy Armour, who went on to play for Great Britain against the United States in 1921 before turning professional and taking up residence in America in 1924. Armour then represented the United States against Great Britain in a professional match in 1926—the year before the Ryder Cup competition was introduced—and came here to win the Open Championship at Carnoustie in 1931.

\* \* \*

After the first 18 holes, Mr. Bretherton was two up, but when he was bunkered at the 28th Armour drew level for the first time since the start. As so often happens after such a hard tussle, Armour then relaxed slightly, however, and Mr. Bretherton took the next four holes in par figures and went on to win by 4 and 3.

In 1920 and again in 1921 Mr. Bretherton won the Midland Counties' Amateur Championship, and was chosen to represent England against Scotland each year from 1922 to 1925. When the Home International Championships were introduced in 1932, Mr. Bretherton was selected to be the non-playing captain of the English side, and also led the team in each of the next two years.

Long before that time, he had begun to take an interest in the administrative side of the game, becoming Honorary Secretary of the Handsworth Club, and assisting the Midland Counties' Association and the Warwickshire Union.

In 1924 the formation of the English Golf Union took place, and for the next 33 years Mr. Bretherton was one of Warwickshire's representatives on that Union. He has held the presidency of the Warwickshire Union of Golf Clubs since 1936, a year in which he was also President of the Midland Counties' Golf Association. He has been a Vice-President of the Professional Golfers' Association since 1928.

\* \* \*

Meanwhile, he had been taking an increasing interest in the subject of greenkeeping, and in 1929 joined the Board of Greenkeeping Research. In 1945 he was asked to become its Chairman, and held that position for nine years. Since then he has been Vice-Chairman and has also been made a Vice-President. About ten years ago the basis of the greenkeeping research constitution was altered to bring in other games and the name of the organisation was changed to the Sports Turf Research Institute.

Among others, the English Bowling Association asked for advice from this non-profit-making concern. "I would like to pay my own tribute to a Director of the Institute, Mr. R. B. Dawson", Mr. Bretherton says. "Nearly everything I know about turf I have learned from him and his staff".

His work in this connection brought Mr. Bretherton in close touch with groundsmen and with the playing fields movement. Thus it was not surprising that his election to the presidency of the Midland Section of the British Golf Greenkeepers' Association came in 1938. He became President of the Association in 1955 and still holds both offices.

\* \* \*

Having such views, it was natural that he should devote much of his time to the public golf courses in the Midlands, and he has done valuable work as honorary technical adviser to the City of Birmingham, borough of Sutton Coldfield, borough of Smethwick and borough of Solihull for municipal courses.

His comparisons between golf of 40 years ago and now are most interesting and his advice to young players is sound. "I started young, which I think is an

enormous advantage—not only in playing, but in the judging of distances", he says. "I had every encouragement and assistance from the older members of the club with whom I played".

"I was also fortunate as to the course on which I played. Then they were not so uniformly good as they are now, but at Handsworth, Sandwell Park, Little Aston and Hollinwell the ground was always clear, for they are on gravelly subsoil.

"There was nothing like the number of big events, and in my day the game was all learned locally. The club and county matches were the most important part of the training, and all the matches consisted of 18 holes singles played in the afternoons. They did not last the whole day as is the case now.

"Young players should have some tuition to start them along the right lines, but they can be over-coached. They may need a check-up with the professional occasionally, but I don't think they should be constantly coached. It is essential for them to have some individual qualities.

\* \* \*

"Practice should take an intelligent form rather than be in quantity, for I think more people practise too much than too little. It is quite unnecessary to be knocking balls about all the time. If you have the right method, you don't need a lot of practice."

Mr. Bretherton, of course, learned his golf when there were no matched sets of irons with steel shafts. In his day, hickory shafts were in use, and one had to adapt one's strokes to suit the club. It is, therefore, pertinent to recall that the aspect of the game for which he gained the greatest renown was his extraordinary accuracy from positions up to 170 yards from the hole. He was also a consistent putter, and in putting, the state of the player's mind becomes more important than for any other stroke on the course.

A tall, lean, bespectacled man, Mr. Bretherton has thus devoted most of his life to golf and the analysis of turf and the men who work on the preparation of it. These subjects have become more than hobbies—they are his life.

(Reprinted, by kind permission, from "The Birmingham Post", 5th June, 1963.)

## AT LAST — GROWTH ON THE GREENS

(Reprinted, by kind permission, from the "Evening Times", Glasgow, of 2nd July, 1963.)

By Jack Robertson

**T**HE overworked and worried greenkeepers of Britain's inland courses are at long last getting some worth-while assistance from the elements.

The grass ailment which hit greens on almost every course in Britain during the severe winter is finally improving with the help of the rain and sun and the big bare patches are gradually receding. And it seems now that the clubs will not require to put out as much expense as had at one time been feared.

The experts, never having come across this condition before, were for a time baffled as to the cause of the "disease", but all are now convinced that it was the ice lying on the greens for weeks on end which killed the grass.

### No Light

As it was pointed out to me, the ice acted as effectively as if cement slabs had been laid on the greens, cutting out the light to the grass and, more serious, preventing it from breathing.

This is evident, especially in the West of Scotland, from the fact that coast courses, which had comparatively little ice, have got off much more lightly than those farther inland and have suffered very little damage by comparison.

The belated arrival of spring and the cold east winds prevented the temperature from rising high enough to take the chill out of the ground so little progress was made.

Greenkeepers' attempts to help the recovery by seeding failed when the seeds did not have enough warmth to germinate.

Most courses, however, have shown signs of recovery in the past fortnight, but it will take the high courses, which are wide open to the cold wind, much longer than the others.

According to the experts the most practical thing clubs can do now is to avoid using the affected greens—as

Cathkin Braes, Erskine and Dalmahoy have been forced to do—and re-seed.

Indeed Dalmahoy, where the Senior Service tournament will be played again in September, have used temporary greens at every hole on their West course for the past two months and this move has certainly paid off, for the greens are coming on very well.

Some of the worst-hit clubs, however, may have to wait until autumn before falling back on their turf nurseries and then hope for a mild, ice-free winter to give the turf a chance to knit before next season.



# PATISSON

## GOLF COURSE EQUIPMENT

Hole Tins	Tee Boxes
Cutters	Tee Plates
Staffs	Ball Cleaners
Mats	Tablets
Mowers	Rollers
Hose	Sprinklers
Mole Ploughs	Rotary Sifters
Aerating Machines and all Greenkeeping Tools	

**H. PATISSON & CO. LTD.**  
**STANMORE · MIDDLESEX**  
**Telephone GRImdsyke 400**



# NEW FROM SISIS

One of the most novel and practical hand tools developed in recent years is the "TRULUTE", introduced this month by Messrs. W. Hargreaves & Co. Ltd., makers of the well-known "SISIS" Equipment.

Those familiar with the use of the garden rake know that it is often used for preparing seed beds, when spreading, levelling, smoothing and tilthing are required, using both the prongs and the back of the rake.

The "TRULUTE" does all this more efficiently, faster and with less fatigue.

It consists of a kind of grid which slides on the ground when pushed or pulled. Used one way up it serves as spreader, leveller, smoother and tilther—reversed it acts as a rubber-in.

The same tool will spread a dressing, level up hollows and "lute" in the dressing right down to the base of the grass.

It is also ideal for re-surfacing gravel or cinder drives and paths.

The "TRULUTE" sells at 59/6d., carriage paid.



*The new Sisis "TRULUTE" rubbing in top-dressing on a cricket wicket. The cutting edge is in action.*

---

Messrs. Carters sent out their bulbs, lawns and plants catalogue for 1963 last month. This 48-page catalogue has been re-styled and contains a wealth of information besides profuse illustrations. The central pages are occupied by full colour illustrations of favourite bulbs: and tree, grass-seed and other information make it a useful reference book for the greenkeeper's shelf. Write to Messrs. Carters Tested Seeds Ltd., Raynes Park, London, S.W.20, if you would like a copy of this excellent publication.

## COURSES IN PLAY—II

### THE OPEN

by John Stobbs

**T**HIS year's Open, in all its excitement up to the tie and play off between Bob Charles and Phil. Rodgers, illustrated two things about how the state of a course can affect play. Both are the sort of thing which can have general application to any club running any event, or even its normal week-end golf.

First was the rough. More than most seaside sandy links-type courses, Royal Lytham and St. Annes tends towards lushness. There are many fairly low places upon the course; and there, where rough is undisturbed on a wet summer like this one, the growth can be not just long but thick, too. Although this only applied in certain places, notably along the 11th, and beside the long 7th, the rough generally had been allowed to grow in, so that the fairways were narrowed to just the right amount for a championship of the stature this one was obviously going to have.

Even where the grass itself was not lush at all, but fine fescue, it grew tall; and the tough seed-bents standing up in it in thick array could have quite an effect upon a club trying to swing through them. Any sort of try at a long shot out of it was often chancy in the extreme, and even a niblick shot could be edged off course by the sheer resistance of the bents to the club. They tended to wrap round the shank. Even some of the top half-dozen players in the final order found shots coming out of rough one side only to fly at an angle into the rough the other.

This illustrated, I thought, two things. First, how very effective psychologically this simplest of all hazards can be. Although its maintenance costs are pretty well nil, its effect upon play, and most of all upon the player before he hits a shot, can be out of all proportion to the actual difficulty he finds if he goes into it. Often, at Lytham, the ball lay

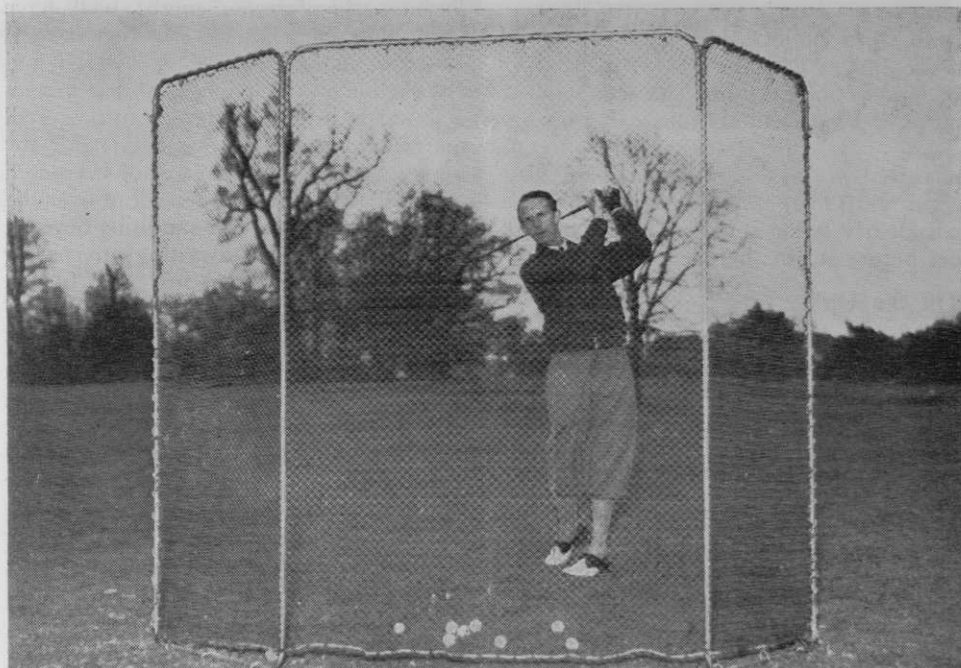
fairly clear and a more or less normal stroke to the green was possible for the class player. But the point was that he didn't know it would be till he got there. 250 paces of anxiety are a hazard in themselves. So the threat of the rough became the threat of the worst lie he was quite likely to find; and the high bents all the way along spared him no reminder of it as he took his last look down the hole before swinging at the ball.

Where courses grow short in summer, and, more often nowadays, where the fairway mower has tended to edge out gradually with the years, widening fairways and often straightening out their edges, a hole may be given new interest and challenge again, simply by reviewing the margin of the mowing pattern, and letting in a curve or corner of rough at a tactical point on the hole. No one will lose a ball there; but everyone will see it and have his play affected, especially if it hazards the evasive line from some permanent hazard of the hole, like a bunker or a clump of trees.

#### Up to Scratch

The other thing noticeable at Lytham was how well some people can putt on greens not at their best. Lytham had suffered like the rest of the Lancashire coast courses from the foul winter; and there must have been many anxious moments during the spring for Head Greenkeeper Marshall and his men. They had done the very best they could to bring them up to scratch for the Open; and (obviously by looking at them) had given them a slightly lower trim for the occasion. On the whole it worked; but the dank weather and the pounding of many spiked feet did naturally leave some of them a little less than their best smoothness round the holes by the last day. And, of course, nothing much could be done about patches where the grass had not yet fully recovered its natural body and evenness. Pins could avoid these patches; but they still had to be putted over.

Despite all this, the ball did roll rather than merely bumble on them; and the decisive answer to one or two professionals who complained about them



A new collapsible nylon mesh practice net on stove-enamelled tubular steel frame. Available, price 10 gns. (P. and P. 8/-) from Southgate Tubular Products Ltd., 148 Chase Side, Southgate, London, N.14. Extra pockets, 7/6 each.

## KEEP'S

**CHLORDANE  
CONCENTRATED WORMKILLERS**

also kill LEATHER-JACKETS

★

**SELECTIVE  
WEED KILLERS**

★

**GRANULAR FERTILISERS**

★

**AUTUMN GRASS  
FERTILISER**

★

**FRANK KEEP (1958) LTD.**

82-84 NORTH END  
CROYDON, SURREY

Telephone : CROydon 0734

## GREENS

**MOWERS**

for every

**GOLF COURSE TASK**

**MOTOR MOWERS 17" to 36"**

**GOLF GREEN MOWERS**

**ROUGH CUTS - cut to bunker  
edge**

**VERGE CUTTERS**

**GANG MOWERS - 2 models**

*Write for fuller details to:-*

**THOMAS GREEN & SON  
LTD.**

**HOWDEN CLOUGH  
BIRSTALL, BATLEY  
YORKSHIRE**

Telephone BATLEY 1951

JOHN STOBBS (continued from page 8)

came from Bob Charles in the play-off at the very end of the week. It is doubtful if any like occasion has seen such a masterly and almost magical putting. Charles had the pace of the greens measured to a tiddle; and again and again that final day you could see the ball clearly going into the hole some six feet before it got there!

### **"On the Up"**

Perhaps it is Charles' manner of striking which did the trick. He uses a stiff-wristed putting stroke; and, I think, hits them slightly "on the up", to start them off in the natural rolling spin. It was perhaps evidence that this counted, when for once—at the 12th on the Saturday afternoon—his tee shot finished beyond the flag against an edge of semi-rough, so that he had to chop down at the ball slightly with his putter. This was the only putt one saw from him that ran unevenly, staying well short from only some 15 feet; it, in fact, cost him three putts.

The other point of major interest at Lytham was the effect of the new tees. The most successful was generally reckoned, I'd say, to be that for the short 12th. It not only lengthened it from a medium iron to a long iron; but it vastly increased the visual challenge of the hole. There are some sharp little pit bunkers before the right hand side of the green. They always menace the shot; but from the new tee, which is angled from considerably further to the right, they positively snarled at the player on the tee—especially with the pin placed arrogantly just behind them as it was.

### **Entirely Fair**

One can hazard the opinion that the new 12th tee would make it one hell of a hole, but still entirely fair, to any reasonable club player. This, though, is something Royal Lytham will no doubt be testing by experience in future.

The lengthening of the 17th is a different matter. This makes it two long hard shots to the best of professionals. Indeed on the Friday I watched Tom Haliburton hit a really sound stroke from the tee—good enough for applause—and only just reach the fairway!

Perhaps the fairway might well have been mown back a bit further than it was; but in any case a hole which had always been a challenge to the nerves was made by the change into a real man's hole in every way. Even for the longest hitters the second shot became a wood or long-iron flighted blind over the Jones country and the sandhills beyond, with a little bunker awaiting any nearly straight shot pitching just left of the stick.

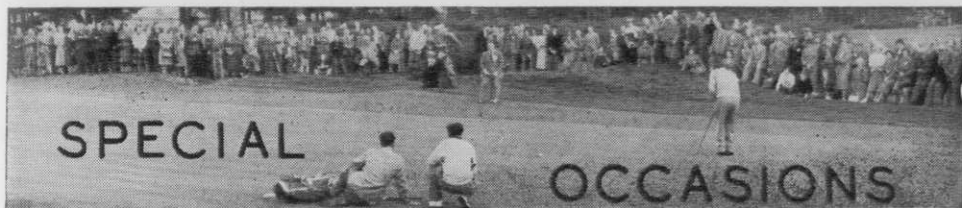
It was this hole—where he hit a long iron on Friday afternoon so perfectly and so straight that it flew past the pin and ran over the bank at the back—that cost Nicklaus the championship. Even to the highest class of player, the longer version of the 17th means that even the best player in the world can no longer simply wham a decisive shot straight at the flag.

### **Demands Thought**

Of course, the 17th always needed to be played with the head; but it can now be said to call forth both the best of striking and the coolest of thinking, and calculation of safety against risk.

The new back tee for the long 11th, rather a dull hole at present running straight up to a bunkered green between long lines of rough on either side—was rejected by the players as just too far back for the fairway available. This does not mean that it should be scrapped. The hole might very easily make a magnificent professional's par-5 if the fairway was widened and dropped back a bit on the right for the tee shot, leaving the huge obstructing bunker still challenging the shortest line; then the second half of the fairway could perhaps be bellied a bit towards the left and the rough brought in a bit from the right to give the hole more shape, tighten the pitch into the green, and tempt the man driving to gain length by playing as near the big bunker as he dares.

Somehow to see Charles playing it cannily in 4, with two woods straight up the middle of the avenue, as it were, and then a chip straight up on to and across the green to the flag, made it look a little less angry and obstructive than perhaps it should be next time the Open goes to Lytham.



**AUGUST.**

12th, 13th  
and 14th

Annual General Meeting and Annual Tournament, Royal Birkdale Golf Club.

**SEPTEMBER**

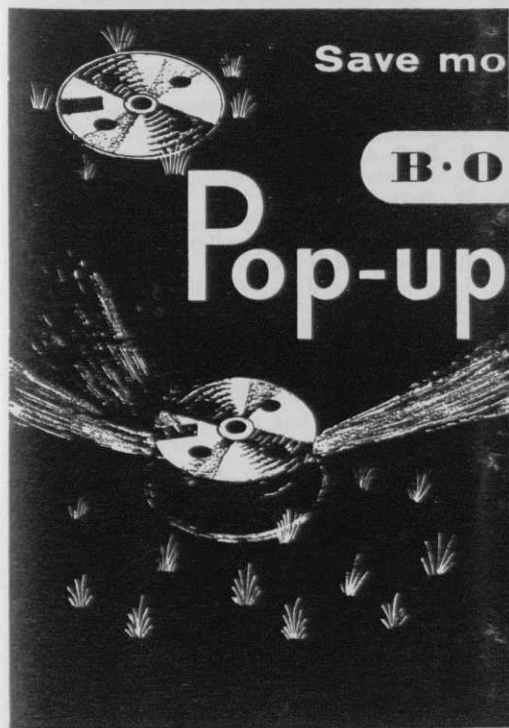
3rd  
4th  
17th  
17th  
17th  
18th  
24th  
25th  
  
26th

Sheffield Section, Visit to S.T.R.I., Bingley.  
Southern Section, Autumn Tournament, Walton Heath Golf Course.  
Sheffield Section v. Northern Section at Fulford G.C., York.  
North West Section Autumn Tournament, Ormskirk Golf Club.  
Northern Section v. Sheffield Section Match, Fulford Golf Club.  
Welsh Section, Autumn Tournament, Cardiff Golf Club.  
Scottish Section Autumn Meeting, Lochgreen G.C., Troon.  
East Midland Section Autumn Tournament, Rothley Park Golf Club, Leicester.  
Midland Section Autumn Tournament, Handsworth Golf Club.

**OCTOBER**

17th

Northern Section Autumn Tournament, West Bowling Golf Club, Bradford.



Save money—save labour  
—irrigate with...

**B·O·I·L**

**Pop-up SPRINKLER SYSTEM**

For irrigating large areas of turf\*, B.O.I.L. POP-UP Sprinkler Systems ensure maximum efficiency, minimum cost and complete reliability.

B.O.I.L. POP-UP Systems can be equipped with extremely accurate, fully automatic control, that will ensure regular watering daily (several times a day, if required) for periods up to 14 days, *with no attention whatever*. Think what savings this means — in time — in labour! The B.O.I.L. fully automatic POP-UP Sprinkler System is one of the biggest steps forward in irrigation ever made.

Please write for full details or, better still, ask the B.O.I.L. man — a fully trained irrigation engineer — to call and tell you all about it.

\*Such as playing fields, sports grounds, golf courses, parks, lawns, tennis courts, etc.

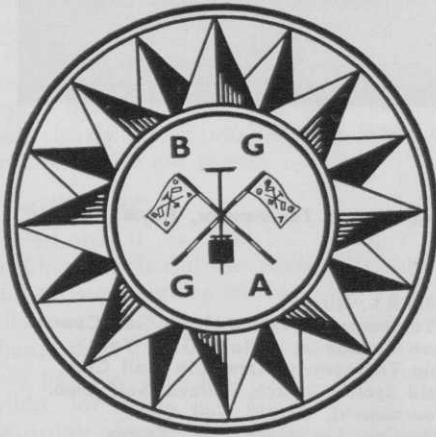
UPPER HALLIFORD · SHEPPERTON · MIDDX

Tel: Sunbury 5177/8 (24 hour Ansafone Service)

Cables: Irrigation, Shepperton

**BRITISH OVERHEAD IRRIGATION LTD**

# News



from the Sections

## NORTH-WEST

By V. Crabtree

Chairman:  
T. BRENNAN  
(Wilmslow G.C.)

Hon. Secretary:  
223 Market Street  
Whitworth, Nr. Rochdale

### Autumn Tournament

THANKS TO THE CAPTAIN AND Council of Ormskirk G.C. our Autumn Tournament will be played there on the 17th September. The course is 1½ miles from the station, transport has been arranged to convey members between 9.30 and 10.30 a.m. Closing date for entries, Monday, 9th September.

### New Member

We welcome William Lawson, 10 Gateacre Brow, Gateacre, Liverpool 25, to the Section as a Class A member, hoping his association with us will be long and interesting.

## WELSH

By S. A. Tucker

Chairman:  
M. GEDDES  
(Royal Porthcawl)

Hon. Secretary:  
36 Clase Road,  
Morriston,  
Swansea, Glam.

### Autumn Meeting

OUR AUTUMN MEETING WILL BE held at the Cardiff G.C. on Wednesday, 18th September. In order to notify the Steward re catering requirements, entries to me by 9th September, please.

On behalf of all our members I would like to express our sincere sympathy to Mr. A. Jury of the Southdown G.C. on the loss of his wife.

Outstanding Subs. to M. Geddes, 23 Fenton Place, Porthcawl, Glam., without delay, please.

## MIDLAND

By F. Cashmore

Chairman:  
G. HART  
(Gay Hill)

Hon. Secretary:  
76 Four Oaks Common Road  
Sutton Coldfield, Warwickshire.

### President's Match

IN PERFECT WEATHER WE AGAIN had a very successful evening at Handsworth, for our match against the President's team. Next year could we show our appreciation to the President for organising this match, by a larger attendance.

The results were as follows:—

#### PRESIDENT'S TEAM

Dr. W. Tweddell and J. M. Urry	—	0
W. J. Roberts and J. Mitchley ...	2 & 1	1
P. Sherritt and J. Whitworth ...	—	0
A. W. Holmes and I. Wheeler ...	2 & 1	1
J. Hodgetts and E. Moggs Wright	—	0
W. N. Dudley Evans and		
A. H. Clayton	4 & 3	1
S. A. Dark and J. P. Richards ...	—	0
W. H. R. Lloyds and Rod Davies	1 up	1
J. P. Barnett and J. Cooke ...	2 & 1	1
W. L. Jones and H. Dowty ...	—	0
J. W. Jackson and T. A. Phillips	3 & 2	1
R. J. W. Baldwin and		
H. O. Wheeler	—	½
Dr. Cartwright and O. J. Jarman	—	0
J. E. Cooper and G. N. James ...	—	0
		6½

#### GREENKEEPER'S TEAM

G. Woodward and E. Benbow ...	3 & 2	1
W. Handy and I. Jones ...	—	0
R. Pugh and A. Hastilow ...	3 & 2	1
G. Wilson and V. Smith ...	—	0
W. Barton and C. Fudge ...	2 & 1	1
H. Drewitt and R. Smith ...	—	0
E. Walford and W. Machin ...	2 & 1	1
B. Powell and G. Smith ...	—	0
J. Stephens and B. Baxter ...	—	0
D. Haynes and M. Williams ...	2 & 1	1
E. Lumby and R. W. Bailey ...	—	0
L. Price and L. Wheeler ...	—	½
C. C. Moore and F. R. Carr ...	2 & 1	1
R. Parker and E. Ballenger ...	3 & 2	1
		7½

After an enjoyable meal provided by Mr. Bretherton, the Captain of the Handsworth Club, Dr. W. Tweddell and Mr. Leslie Foster, expressed their appreciation of Mr. Bretherton. George Hart on behalf of the Greenkeepers also thanked him, and all members of his team for an enjoyable game.

### A.G.M.

Our Annual General Meeting was held at the Sandwell Park G.C. on 1st July, we were pleased to again have Mr. Bretherton to preside, apologies were received from Mr. L. Sargeson, Mr. R. Parker, G. Hart and G. Woodward. The Secretary's report on the

year's activities was adopted, as also was the Balance Sheet, presented by the Treasurer. Mr. Carl Bretherton was again unanimously elected President, and the Vice-Presidents were re-elected en bloc. George Hart, Chairman; Bill Mason, Vice-Chairman; Frank Cashmore, Secretary; and George Wilson, Treasurer were re-elected, and E. Benbow was again elected as our representative on the Executive Committee. The following were elected to form the Committee: W. Barton, E. Benbow, H. Drewitt, W. Handy, I. Jones, R. Pugh, V. Smith, J. Stephens and G. Woodward. Mr. Ken Sargeson and Mr. E. Ballenger were re-elected as our Hon. Auditors. Eric Ballenger proposed a vote of thanks to the Treasurer and other officers for their work in the past year. The Secretary reported that he had heard from Fred Gregory, who since he left Kenilworth G.C. has been down at Dawlish Warren, to say he had now retired, we have now elected him an H.L.M.

#### Parker Challenge Cup

In the afternoon 10 members competed for the Parker Challenge Cup, which was won by Reg Pugh, 81—8=73; 2nd, E. Benbow, 82—6=76; 3rd, W. Barton, 85—7=78; 4th,

V. Smith, 89—11=78. Mr. Carl Bretherton thanked the Sandwell Park G.C. for allowing us the use of the course, and the Club House for our A.G.M. He also thanked the steward for giving up his rest day, and Ron Moss for the use of his caddy carts. We thank Mr. Buswell, the Sandwell Captain for giving a prize, and for joining us in the evening.

#### Autumn Tournament

Our Autumn Tournament will be held at the Handsworth G.C. on Thursday, 26th September, by kind permission of the Committee, when we hope to get a good entry. We shall be pleased to see any of our Vice-Presidents for our invitation match in the afternoon. Details will be in the September Journal.

#### New Members

We are pleased to welcome the following new members:—J. Munro, 28 Catherine Rd., St. Johns, Worcester, Head Greenkeeper at Worcester Golf and Country Club; R. Muldooney, 25 Hall Close, Stoneleigh, Nr. Coventry; D. R. Weaver, Featherston Farm, Ryton-on-Dunsmore, Nr. Coventry, and R. Horsfall, 142 Anchorway Rd., Green Lane, Coventry, all associate members at the Coventry Golf Club, Finham Park.

## SOUTHERN

By W. Mason

Chairman:  
J. K. GLASS  
(Thorpe Hall)

Hon. Secretary:  
18 Albert Road, Hendon, N.W.4.  
Tel.: SUNnyhill 0245

AT OUR ANNUAL GENERAL MEETING on 12th June, Mr. F. Chambers, for many years our President, asked to be excused from standing for re-election owing to, as he says, "Anno Domini", and on the advice of his doctor not to be out on winter evenings to attend our lectures, etc. I feel sure all members of the Southern Section, who were not at the meeting, will be sorry to hear this and we would all like to say, through the medium of this journal, how very reluctant we were to elect a new President and how much we appreciate all he has done for us. He was invited to continue with us as an Honorary Life Member and this he was very pleased to accept.

By a unanimous vote, our very popular Vice-President, Mr. J. Wallis Arthur, was elected to be our new President.

#### Visit to Suttons

Our visit to Messrs. Suttons at Reading was a most educational and enjoyable day. On arrival we had coffee, after which a tour through the laboratory department was made until lunch, followed by a discussion on the new bowling greens. We then proceeded to the trial plots, where all kinds of questions were being asked and answered. A most excellent tea followed, with the usual speeches to which our President responded, saying how sorry he was to hear of Mr. Martin Sutton's

illness and that we all wished him a very speedy recovery. We would like to say how much we appreciated the welcome given to us.

#### Autumn Tournament

The closing date for entries to our Autumn Tournament at Walton Heath is Monday, 19th August and the draw will take place on Tuesday, 20th. All competitors will receive a draw sheet.

#### New Members

We welcome to the Section Mr. L. Dazley, 23 Kelvin Avenue, Bedford.

## NORTH-EAST

By T. Oliver

Chairman:  
J. SIMPSON  
(Ponteland G.C.)

Hon. Secretary:  
Heathery Cottage,  
Heathery Lane, Gosforth,  
Newcastle-on-Tyne 3.

FOR MEMBERS WHO WERE ENQUIRING, I have received a supply of Badges and Ties.

We thank Mr. L. Lowery for organising the distribution of tickets for the Association Draw on the *News of the World* P.G.A. Match Play Championship and hope that members will support him by selling as many as possible.

#### New Members

We are pleased to welcome the following new members:—Thomas Davies, 45 Fulthorpe Avenue, West Hartlepool, Hartlepool Golf Club, Co. Durham; Richard Patterson, 27 Glenallen Gardens, Tynemouth, Whitley Bay Golf Club.

# NORTHERN

By J. Parker

Chairman:  
S. BAILES

Hon. Secretary:  
8 Goit Stock Terr., Harden,  
Bingley, Yorks.

## Headquarters Sweep

MEMBERS ARE REMINDED THAT all counterfoils and monies for the Headquarters sweep should now be returned. It is to be hoped that members will have done their utmost to see that there are no unsold tickets.

## Autumn Tournament

The Annual Autumn Tournament of the Section will be played over the course of the West Bowling G.C., Bradford, on Thursday, 17th October (by kind permission of the Committee).

## Sheffield Match

Acceptances of invitations to play in the match at Fulford on 17th September must be returned to me not later than Saturday, 7th September.

## Blazer Badges

I have now in stock a number of Association Blazer Badges. I will be pleased to supply any member of the Association with one on receipt of £1 10s. 0d.

## Spring Tournament

I omitted the names of Ransomes, Sims & Jefferies, H. Pattison & Co. and Rigby Taylor Ltd., from the list of donors to our Prize Fund. I apologise for the slip and thank them for their support.

## New Members

We welcome to the Section the following three new members from the Castletown Golf Club, Isle of Man:—R. Kneen, 33 James Rd., Castletown (Head Greenkeeper); J. A. Burman, 10 Tynwald Grove, Janet's Corner, Castletown; A. Copley, "Runis Vie", Bowling Green Rd., Castletown.

# SHEFFIELD

By J. J. Dearlove,

Chairman:  
G. HERRINGTON  
(Lindrick).

Hon. Secretary:  
63 Langsett Avenue,  
Sheffield, 6. ■

FULL DETAILS OF OUR VISIT TO S.T.R.I. Bingley on Tuesday, 3rd September will be available for next month's journal.

Our match against the Northern Section will take place at the Fulford G.C., York, on Tuesday, 17th of September, details of travel will be available later.

Mark Holmes, the Head Greenkeeper at Hallamshire G.C. has been persuaded to return to Hesketh, his old club. Mark has been a member of the Sheffield Section for 8 years, 3 of those as its Secretary. With him go our best wishes, and we hope he will find the winters a bit milder at Hesketh.

May I take this opportunity to congratulate the North East Section on its success since its reformation. Whilst at the Seaton Carew G.C. I was a member of the old Section and must say how pleased I am to see Tommy Oliver as its Secretary once again.

## SITUATIONS WANTED

Experienced Head Groundsman seeks post as Head Greenkeeper at Golf Club. Box No. 99.

## SITUATIONS VACANT

Head Greenkeeper required for new 18 hole Golf Course in the South of France. House, light, etc., small car, accident insurance provided. Salary about £80 per calendar month. 12 months' trial on both sides. Please write fullest personal details to Box No. 100.

EAST BERKSHIRE GOLF CLUB, Crowthorne, wish to engage experienced qualified Head Greenkeeper. Newly erected rent-free cottage plus salary to be negotiated, according to qualifications and experience. To take up duties approximately in three months' time. Applications, treated in strictest confidence, to: The Secretary.

# R. C. CRAIG

AND CO. LTD.

SPECIALISTS IN THE REPAIR AND MAINTENANCE OF ALL TYPES OF MOWERS

★ Agents for: RANSOMES, SIMS & JEFFERIES Ltd.

★ LLOYDS & Co. Ltd.  
WEBBS LAWN MOWERS

★ Distributors: DENNIS BROS Ltd.

★ GANG MOWERS FOR HIRE

We will gladly call on you to advise on your grass cutting equipment or arrange demonstrations. Ring us now.

153 Arch Stamford Brook  
Station, LONDON, W.6.

RIVERSIDE 5415





## THE SCOTTISH GOLF GREENKEEPERS' ASSOCIATION

*Chairman:*

D. L. MACDIARMID,  
Royal Burgess Golfing Society,  
Barnnton, Edinburgh 4.

*General Secretary:*

R. B. MOFFATT,  
71 Kelton Street, Glasgow, E.2

THE RESULTS OF OUR ANNUAL golf outing played over Prestonfield Golf Course on the 27th June, 1963 were as follows:—

Scratch—1st, H. Diamond, Irvine Bogside, 77; 2nd, S. Davies, Luffness, 78.

1st Class—1st, R. Scott, Williamwood, 83—8=75; 2nd, J. A. Moffatt, St. Andrews, 80—4=76; 3rd, E. Gilmour, Turnhouse, 85—8=77; 4th, W. M. Brown, Jedburgh, 85—7=78.

2nd Class—1st, D. McNicol, Windyhill, 84—12=72; 2nd, J. Fitzpatrick, Whitecraigs, 90—16=74; 3rd, A. Pringle, Killermont, 91—15=76; 4th, T. Wemyss, Hags Castle, 90—14=76.

3rd Class—1st, D. Kirkland, Drumpelzier, 95—24=71; 2nd, J. Lawrence, Leven Thistle, 91—20=71; 3rd, R. Meldrum, Kilmalcolm, 91—20=71; 4th, R. Paterson, Hayston, 91—18=73.

Veterans—1st, G. Morris, Milngavie, 82—4=78; 2nd, D. Paterson, Paisley, 85—7=78.

New Members—1st, M. Travers, Skelmorlie, 80; 2nd, J. McMillan, Elderslie, 96.

Trade—9-hole Putting Competition: W. Beveridge, Ransomes.

St. Mungo Cup: West, 214; East, 222.

On behalf of the Association I would like to take this opportunity to thank the Captain and Members of Prestonfield Golf Club for their hospitality.

Once again, we wish to thank the Trade for the prizes donated on this occasion.

Members present were sorry to learn of the illness of Mr. F. Hunter, the Head Greenkeeper, and wish him a speedy recovery.

## Open Championship Prize Draw

The President and Committee wish to thank members for their enthusiastic response and the results will be published in the next issue of this magazine, if possible.

## WEST SECTION

*Hon. Secretary:* B. MOIR,  
11 Helen's Terrace, Kilwinning, Ayrshire.

### Autumn Meeting

OUR AUTUMN MEETING WILL BE held over Lochgreen Golf Course, Troon, on Tuesday, 24th September.

## MISCELLANEOUS

PROFESSIONALS AND GREENKEEPERS having stocks of used golf balls contact Sparkbrook Golf Ball Co., 295 Highgate Road, Stoney Lane, Birmingham, with a view to filling export orders.

1894

1963

EDINBURGH

**EVERYTHING FOR GOLF COURSES**

**GRASS COMBS**

**GOLF FLAGS**

**GRASS SEED**

**GRASS MANURE**

**FIBREGLASS FLAGSTAFFS**

**AND SWITCHES**

**STEWART & CO.,**  
SEEDSMEN LTD.  
**EDINBURGH, 2**

**THE BRITISH GOLF GREENKEEPERS' ASSOCIATION**  
**ANNUAL GENERAL MEETING**

**Monday, 12th August, 1963, at 3-0 p.m.**

**AGENDA**

1. Minutes of last Annual General Meeting.
2. Annual Report.
3. Financial Statement.
4. Executive Committee Report.
5. Election of Officers.
6. To confirm last year's resolution that Journal postage be increased from 2/6 to 3/6.
7. Alteration to Rule 7.

That, having regard to the resolution of last year's Annual General Meeting increasing the contribution to Journal postage to 3/6, the need to develop the Journal to the fullest extent possible, and in order to assist Section finances, Members' subscriptions be increased as follows:—

					£	s.	d.
Class 'A'	Head Greenkeepers	...	...	...	1	10	0
Class 'B'	First Assistants	...	...	...	1	0	0
Class 'C'	Associates	...	...	...	15	0	0
Class 'D'	Greenkeeper/Professionals	...	...	...	1	10	0
Class 'E'	Honorary Members	...	...	...	2	2	0

These subscriptions shall be allocated as follows:—

Class 'A'	Class 'B'
8/6 to Section Fund.	7/- to Section Fund.
13/- to Central Fund.	4/6 to Central Fund.
3/6 to S.T.R.I.	3/6 to S.T.R.I.
5/- to Journal.	5/- to Journal.
Class 'C'	Class 'D'
6/6 to Section Fund.	8/6 to Section Fund.
3/6 to S.T.R.I.	13/- to Central Fund.
5/- to Journal.	3/6 to S.T.R.I.
	5/- to Journal.

Class 'E'

£1 18s. 6d. to Section Fund.

3s. 6d. to Journal.

8. Proposition from the North West Section:—  
 "That all Golf Clubs be circularised as to the rates of pay recommended, according to the Grade of Golf Greenkeepers."
9. Proposition from the Southern Section:—  
 "That, if possible, Members Passes should be recognised as a free entry to all Golf Tournaments."
10. Any other business.

## BUYERS' GUIDE

### BUNKER DRESSER

SMALLHOLDERS UTILITIES SUPPLY CO., 183  
Hammersmith Road, London, W.6.

### CLINKER, ETC.

FRANK KEEP, Ltd., 82-84 North End, Croydon,  
Surrey.  
T. PARKER & SONS, Worcester Park, Surrey.

### CONTRACTORS

GILLIAM & CO. Ltd., Purley, Surrey.  
J. R. STUTT Ltd., Canford Cliffs, Bournemouth.

### EQUIPMENT SERVICING

R. C. CRAIG, Ltd., 30 Aylmer Rd., London, W.12.  
GROSVENOR ENGINEERING CO., Manningham,  
Bradford, Yorks.  
RELF & KENDALL, 406 Brighton Rd., S. Croydon,  
Surrey.  
T. PARKER & SONS, Worcester Park, Surrey.

### FERTILISERS

CANNOCK AGRICULTURAL CO., Ltd., Cannock,  
Staffs.  
CARTERS' TESTED SEEDS, Ltd., Raynes Park,  
London, S.W.20.  
ECLIPSE PEAT CO., Ltd., Ashcott, Somerset.  
FISONS, Ltd., Harvest House, Felixstowe, Suffolk.  
F. KEEP, Ltd., 82-84 North End, Croydon, Surrey.  
T. PARKER & SONS, Worcester Park, Surrey.  
STEWART & CO., Seedsmen Ltd., Edinburgh, 2.  
SUTTON & SONS, Ltd., Reading.

### FUNGUS CONTROL

CANNOCK AGRICULTURAL CO., Ltd., Cannock,  
Staffs.  
CARTERS' TESTED SEEDS, Ltd., Raynes Park,  
London, S.W.20.  
MAY & BAKER, Ltd., Dagenham, Essex.  
T. PARKER & SONS, Worcester Park, Surrey.  
SUTTON & SONS, Ltd., Reading.

### GOLF TEE MATS

UNIVERSAL MAT CO., Ltd., Tileyard Road,  
London, N.7.

### GRASS SEEDS

CANNOCK AGRICULTURAL CO., Ltd., Cannock,  
Staffs.  
CARTERS' TESTED SEEDS, Ltd., Raynes Park,  
London, S.W.20.  
F. KEEP, Ltd., 82-84 North End, Croydon, Surrey.  
T. PARKER & SONS, Worcester Park, Surrey.  
STEWART & CO., Seedsmen Ltd., Edinburgh, 2.  
SUTTON & SONS, Ltd., Reading.

### GREENKEEPERS' TOOLS & COURSE EQUIPMENT

R. C. CRAIG, Ltd., 30 Aylmer Road, London, W.12.  
W. HARGREAVES & CO., Ltd., "Sisis" Patent  
Equipment, Macclesfield, Cheshire.  
H. PATTISSON & CO., Ltd., Stanmore, Middlesex.  
T. PARKER & SONS, Worcester Park, Surrey.  
STEWART & CO., Seedsmen Ltd., Edinburgh, 2.

### INSECTICIDES

CANNOCK AGRICULTURAL CO., Ltd., Cannock,  
Staffs.  
T. PARKER & SONS, Worcester Park, Surrey.

### LEAD ARSENATE

F. KEEP, Ltd., 82-84 North End, Croydon, Surrey.  
T. PARKER & SONS, Worcester Park, Surrey.

### LOAMS & MANURES

T. PARKER & SONS, Worcester Park, Surrey.

### MOWER ENGINEERS

RELF & KENDALL, 406 Brighton Road, S. Croydon,  
Surrey.  
T. PARKER & SONS, Worcester Park, Surrey.

### MOWERS

A. C. BANKS & CO., 149 Cope Hill, Wimbledon,  
S.W.20  
BRADLEY'S, Leeds Rd, West Ardley, nr. Wakefield,  
Yorks.  
T. GREEN & SON, Ltd., Smithfield Ironworks,  
Leeds, 2.  
GROSVENOR ENGINEERING CO., Manningham,  
Bradford.  
LLOYDS & CO., Ltd., Pennsylvania Works, Letch-  
worth, Herts.  
T. PARKER & SONS, Worcester Park, Surrey.  
H. PATTISSON & CO., Ltd., Stanmore, Middlesex.  
C. H. PUGH, Ltd., P.O. Box 256, Atco Works,  
Birmingham, 9.  
RANSOMES, SIMS & JEFFERIES, Ltd., Orwell  
Works, Ipswich, Suffolk.

### SEA SAND

F. KEEP, Ltd., 82-84 North End, Croydon, Surrey.  
T. PARKER & SONS, Worcester Park, Surrey.

### SPRAY EQUIPMENT

T. PARKER & SONS, Worcester Park, Surrey.  
PRESSURE JET MARKERS Ltd., 152 The Arches,  
Stamford Brook, London, W.6

### TRACTORS

T. GREEN & SON, Ltd., Smithfield Ironworks,  
Leeds 2.  
W. HARGREAVES & CO., Ltd., "Sisis" Patent  
Equipment, Macclesfield, Cheshire  
T. PARKER & SONS, Worcester Park, Surrey.  
H. PATTISSON & CO., Ltd., Stanmore, Middlesex.

### TURF AERATING APPLIANCES

W. HARGREAVES & CO., Ltd., "Sisis" Patent  
Equipment, Macclesfield, Cheshire  
T. PARKER & SONS, Worcester Park, Surrey.  
H. PATTISSON & CO., Ltd., Stanmore, Middlesex.

### WEED CONTROL

MAY & BAKER, Ltd., Dagenham, Essex.  
T. PARKER & SONS, Worcester Park, Surrey.

### WEED CONTROL SPRAYING

T. PARKER & SONS, Worcester Park, Surrey

### WORM KILLER

CARTERS' TESTED SEEDS, Ltd., Raynes Park,  
London, S.W.20.  
F. KEEP, Ltd., 82-84 North End, Croydon, Surrey.  
T. PARKER & SONS, Worcester Park, Surrey.  
SUTTON & SONS, Ltd., Reading.

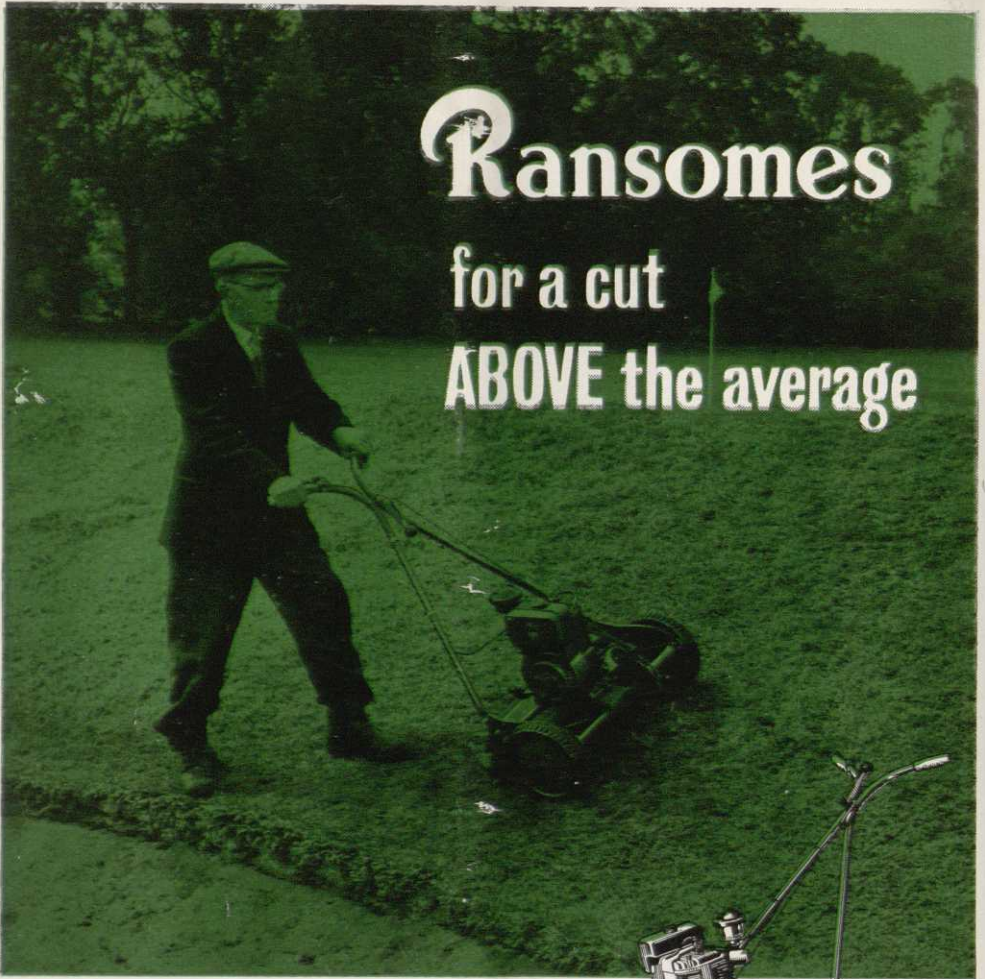
**ENQUIRY BUREAU.**—The Editor desires to point out that he will be pleased to answer enquiries from our readers, and forward to them the name and address of the manufacturer or supplier of any particular proprietary article or product used in the construction, maintenance and upkeep of a golf course. Enquiries are coming in from greenkeepers asking for such information. They may, for example, know the trade name of the article or product they wish to purchase, but may not be conversant with the name and address of the actual manufacturer or supplier. The Enquiry Bureau will gladly supply this information, and thus enable the greenkeeper to contact the manufacturer or supplier direct.

**TO MANUFACTURERS.**—In order that our information may be kept constantly up to date, manufacturers or suppliers are requested to forward their latest trade lists, catalogues, and any other confidential information regarding their products. By so doing the Bureau will be able to function to the mutual benefit of all concerned.

**TRADE REVIEWS.**—The Editor will be pleased to arrange to devote space in our editorial columns to a review of our advertisers' products, etc. Will advertisers please forward details for this purpose.

# Ransomes

for a cut  
**ABOVE** the average



## Ransomes 20" ANTELOPE

for a cut **ABOVE** the average



*And This is Why-*

The 'Antelope' is a fully-driven machine for tackling banks and verges, and other difficult places. Yet it will leave a good finish on grass of up to 1-acre in extent. Look at these features:-

- Easy starting 4-stroke engine
- Five-knife large diameter cutting cylinder running on ball bearings
- V-belt and roller-chain transmission
- Height of cut adjustable from  $\frac{3}{16}$ " to  $1\frac{3}{4}$ "



BY APPOINTMENT  
TO HER MAJESTY THE QUEEN  
FOR THE SUPPLY OF  
& AGRICULTURAL IMPLEMENTS

**RANSOMES SIMS & JEFFERIES LTD., ORWELL WORKS, IPSWICH**