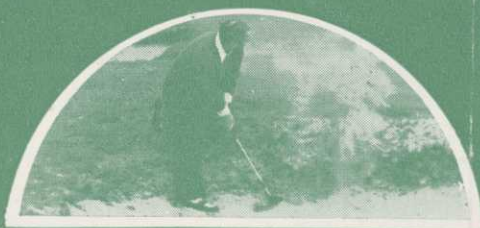


MARCH
1962 1/-

The British Golf

Greenkeeper



U. S. G. A. GREEN SECTION

ALLEN
CROLEY
FERGUSON
SNUGGS
FILE



Ransomes

for a cut
ABOVE
the average



BY APPOINTMENT
TO HER MAJESTY THE QUEEN
(MANUFACTURERS OF AGRICULTURAL
& HORTICULTURAL MACHINERY)



Ransomes 18 inch AUTO-CERTES is shown here mowing Lindrick Golf Course, which Max Faulkner described as "the best manicured course I have ever been on." AUTO-CERTES is hand built for the finest cutting of precious turf. Outstanding features are its thin bottom blade, ten-knife cutting cylinder and its removable side-wheels which are used for transporting the machine under its own power from green to green. Ask your Ransomes dealer for a demonstration.

RANSOMES SIMS & JEFFERIES LTD., ORWELL WORKS, IPSWICH

DON'T LEAVE IT TOO LATE!



NOW is the time to get your mower in for that overhaul—carried out by skilled engineers—1962 tools and equipment. Over 10,000 spares in stock. Fleet transport for immediate delivery.

IT'S EXPERIENCE THAT COUNTS

RELF & KENDALL HAVE THE ANSWER WITH THEIR

2-PLUS SERVICE

1. Exchange Assembly Service of Engines, cutters, Magnetos, Gear-boxes, etc.
2. Express workshop facilities and delivery of spares.

Main agents and distributors for Clinton Engines. Spare parts and service exchange assemblies now available from stock.

Ransomes
Authorised service repair agents.
Sales, Spares and Service.

RELF AND KENDALL

406 BRIGHTON ROAD, SOUTH CROYDON, SURREY. CRO 0578
11 STATION ROAD, NEW BARNET. BARNET 8228

Official London Area Distributors to Ransomes, Sims & Jefferies, for specialist machines.



Agents for Dennis, Shanks, Greens, Atco, Lloyds and Allen Motor Scythes.

THE BRITISH GOLF

GREENKEEPER

HON. EDITOR: F. W. HAWTREE.



FOUNDED 1912.

PUBLISHED MONTHLY FOR THE BENEFIT OF GREENKEEPERS, GREENKEEPING AND THE GAME OF GOLF BY THE BRITISH GOLF GREENKEEPERS ASSOCIATION

President:

CARL BRETHERTON

Vice-Presidents:

SIR ROBERT WEBBER, J.P., D.L.

SIR WILLIAM CARR

MAJOR A. WHITLEY LAVARACK, M.C.

R. B. DAWSON, O.B.E., M.S.C.,

F.L.S.

GORDON WRIGHT

F. W. HAWTREE

S. NORGATE

I. G. NICHOLLS

F. V. SOUTHGATE

P. HAZELL

W. KINSEY

R. C. AINSCOW

Chairman:

J. K. GLASS,
Thorpe Hall G.C.

Vice-Chairman:

D. G. LORD,
Swansea Bay, G.C.

Hon. Secretary & Treasurer:

C. H. DIX,
Addington Court G.C.
Featherbed Lane,
Addington, Croydon, Surrey

Executive Committee:

Carl Bretherton (President),
G. Herrington, J. J. Bryan, E. H.
Benbow, G. J. O'Gorman, S. T.
McNeice, O. P. Jones, B. V.
Fordham, J. Parker

Hon. Auditors:

Messrs. STOV, HAYWARD AND CO.,
97-99 Park Street, London, W.1.

Hon. Solicitor:

R. A. BECK,
21 Lime Street, London, E.C.3.

The Association is affiliated to the English and Welsh Golf Unions.

No. 204 New Series

MARCH 1962

A change in the weather is enough to renew the world and ourselves.

Marcel Proust.

MARCH CONTENTS

- Page 3 TEE SHOTS
- 4 DEVIL'S ADVOCATE 6
- 6 TIME TO TURN IT IN
- 11 GET RID OF GAMEKEEPERS AND SOCIETIES
- 13-14 SECTION NEWS
- 15 HON. SECRETARY'S NOTES
- 16 SPECIAL OCCASIONS, SCOTTISH NEWS and SITUATIONS VACANT

EDITORIAL AND ADVERTISEMENT OFFICES: Addington Court Golf Club, Featherbed Lane, Addington, Croydon, Surrey. Telephone: SANDERstead 2690. SUBSCRIPTION RATE: 14/- for 12 issues post paid. Published during the first week of each month. LATEST COPY DATE: 8th of month prior to insertion. All rights reserved. Reproduction of original articles and photographs in whole or in part is prohibited. This Magazine shall not, without the written consent of the Publishers first given, be re-sold, lent, hired out, or otherwise disposed of. Contributions and photographs of interest are invited.

TO INSERT A CLASSIFIED ADVERTISEMENT, write to the Advertisement Manager at the above address. The rate is 6d. per word (minimum 15 words). Box Number, 1/6d. extra. Remittance must be sent with order. Please state number of insertions required and write advertisement in block letters. Advertisements will be inserted in the first available issue.

R. C. CRAIG & CO. LTD.

NOW is the time to think about having your grass cutting equipment overhauled.

Our service vans cover a large area and we will be pleased to call on you and advise you on your repair problems.

Estimates given without obligation.

Agents for: Ransomes Sims and Jefferies.
Lloyds of Letchworth.

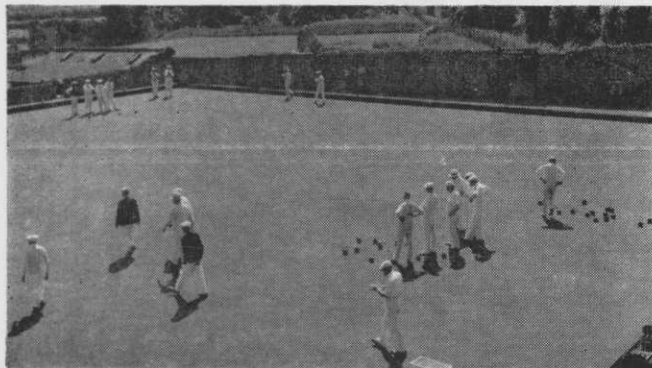
Distributors for: Dennis Bros.

WE SHALL BE PLEASED TO HEAR FROM YOU.

R. C. CRAIG & CO. LTD.,

153 Arch. Stamford Brook Station, Hammersmith, London, W.6.

Telephone: RIVerside 5415.



Thinking about the turf?

Problems? Suttons will know the answer... and they operate a special advisory service to give those responsible for sportsgrounds the benefit of their knowledge of turf and grasses. Some good advice now... buy your grass seeds, fertiliser, weedkiller and turf dressings from Suttons, and be sure of service backed by understanding

don't fail to grow **Sutton's**
grass seeds

Post coupon now for FREE catalogue: To Sutton & Sons Ltd. Reading.

name

address

Please send me your free catalogue of grass seeds and turf specialities, also details of your Grass Advisory Service. BGG6

TEE SHOTS



by the Editor

ANY QUESTIONS?

A golf course will, in due time, reflect the personality, knowledge and efforts of the people who are in charge of it . . . L. J. Feser, writing in *The Golf Course Reporter*, recalls an aspect of greenkeeping which can be easily forgotten.

★ ★ ★

Efforts towards perfect playing conditions are often made on standard, safe lines without asking whether the result is really desirable. There is need for analysis before action. Are close lies through the fairway nearer to essential golf than those well-cushioned? Will fast greens, alarming to approach, be more likely to reward the golfer with courage and skill enough to endure under pressure? What, in fact, are perfect playing conditions? Certainly there is more to them than the comfortable, tidy picture which the phrase conjures up.

Woolly?

The job of the golf greenkeeper is to aim at a particular, rather than a perfect playing condition on his course. And he must be prepared to defend the result. To be stimulating to the player this should reflect the thought and brains of the man in charge. The last thing the man in charge should have is a woolly notion of green acres with no weeds, however desirable that may be on other scores. He must think hard about the game of golf and his own course and decide what is best in the one and how best to demand it in the other. The objective, once decided, will be a compromise with soil, climate and funds, but funds will only limit the trimmings not the essentials. Whether planting a single tree or a hundred trees, there are still fifteen distinct questions to be answered before deciding the location. Knowing the questions is just as important in this job as knowing the answers.

Past Mistakes?

We often find ourselves embarrassed, when visiting a distant golf course by apologies for its size, importance or situation. But none of these factors is of the least importance once the course has been made, even if you wish it never had been. Whatever the mistakes of the past, the problem now is to get the most out of that particular piece of ground. The greenkeeper must ensure that his methods are aimed at perpetuating not counteracting the fun, interest, skill, excitement and challenge which good design should produce.

★ ★ ★

If the golfer wants to come back because your course is not like all the rest, you are putting a bit of yourself into it and doing a good job. And enjoying it more into the bargain.

DEVIL'S ADVOCATE 6

by
Goblin

Goblin in the last article of his winter series declares all out war on weeds with frontal assaults, commandos and sudden death in the dark.

WHY IS A WEED?

IT was inevitable, I suppose. With men and their time and labour becoming progressively more and more valuable and expensive, the easy way out for Committees, Secretaries and Greenkeepers is to turn to mass methods to deal with details which used to be done by hand. So much so that it is heresy nowadays even to suggest that the best way to deal with weeds is other than by the use of sprayed weedkillers.

Dangerous

Yet close acquaintance with one's own course suggests emphatically that the old way of dealing with them was best; and the new way dangerous. Weeds for one thing, seem to have a habit of coming back with greater and greater enthusiasm after a period of apparent extinction by chemical treatment. The suspicion begins to arise that there may be a parallel here between D.D.T. on insects and the post-war weedkillers on greens. When insects began to develop strains resistant to D.D.T., the knowledge of this was at first something of a curiosity amongst research men, enshrouded in cautious phrases in learned periodicals. Then the race to produce new compounds to deal with D.D.T.-resistant insects began; and the chain of new resistances and then new chemicals to meet it got really under way, and now seems to be the accepted progressive pattern. This might be beginning to happen with weeds and weedkillers. But what is certain is that very little is known about the long-term effects on old turf of weedkiller treatment. If it seems to the man who has known the same ground for a long time that the standard, health, and quality of turf has

steadily deteriorated since weedkillers of the modern type came in, this may be illusion. But it may be—as it appears to be—fact.

Who is to say what a weed is, anyway? The best definition—to a golfer at least—is simply a plant that gives a bad lie or interferes with the smoothness of the putting surface: and nothing else. On any course that had been well-tended in pre-war days, the invasion of weeds of this kind was negligible. The ones that did come in were dealt with in the simplest and most effective manner: on the greens, the greenkeeper just bent down with a pocket knife and cut the offending plant out as soon as it began to show itself. The time spent on removing weeds of this sort cannot have added up to anything worth reckoning even over a whole year.

Fairway drill

The fairways, on the other hand, did take time. The drill at my club was for the ground staff of five to take each fairway in turn once a year and go down it in a line across, each with a bucket in one hand and a weeding tool in the other. In this way, each weed stood a good chance of getting removed before it was a year old, and the slow developers never lasted more than two. The work could go fairly fast, too, since the number of weeds to be removed remained small, and they stood out to the eye.

Now that this system has been abandoned, most of our fairways are thoroughly invaded by broad-leaved weeds, especially where trolleys have worn the grass: and the only con-

ceivable way to deal with them—old style—would be by parties of members, twenty strong, on each fairway in turn: followed by a subsequent annual assault on the same scale. And why not? There are enough members in the club for each fairway to be covered, on average, by each man sparing one afternoon a year: not much, to preserve the quality of the course, and the impeccability of a brassie lie when you most need it, so simply and safely.

Chemical treatment

The alternative of chemical weeding of the fairways might have an effect that could never be foreseen. Heath turf, especially on sour ground on chalk country, could—one cannot help fearing—be badly damaged by them. There is a lot more in it than just grass; and it depends on its springiness and wearing qualities on the whole compound of vegetation co-existing and inter-complementing itself.

The risk in chemical treatment might be great—and there is no real need for it!

But if the fairways do present an undoubted problem in labour and time, now that they have been allowed to lapse so far from their old impeccable freedom from weeds, the greens surely are a different matter. If the greenkeepers and the Secretary have their eyes about them, and walk them regularly with a careful and judicious eye and a knife in hand, then there just should be no weeds in them: and no problem. If an ordinary member can itch to carry a pocket-knife (for greens) and a weeding tool (for fairways) in his bag every time he goes round, then surely the situation is beginning to get plain silly. I'm not saying it applies to all courses by any means; and many are still beautifully tailored in this respect. But others aren't, show no signs of being—and mine, which I love quite unreasonably, is one of them!

Perhaps if I went out after dark with a torch, I might get away with it. Perhaps not. It shouldn't take more than a couple of years to complete the job single-handed. How desperate can one get?

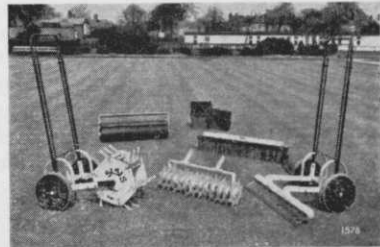
"SISIS"
REGD PATENTS

**SPORTS TURF
MANAGEMENT
EQUIPMENT**

THE TURFMAN OUTFIT

for hand or powered operation

- ★ All implements quickly and easily interchanged.
- ★ Can be pushed or pulled by one man.
- ★ Powered operation by attachment to two-wheeled tractors (e.g. Allen, Atco, Mayfield, Scythes, etc.)
- ★ A complete outfit consisting of: Aerators, Rakes (Tilthing or Scarifying), Rollers, Whalebone Brushes.
- ★ In regular use on Sports Grounds throughout the country.



Write for Brochure of the "SISIS" Turfman Outfit to:

W. HARGREAVES & CO. LTD.

Hurdsfield Industrial Estate, Macclesfield, Cheshire.

Tel: Macclesfield 6363

When your tractor's had its day it's . . .

TIME TO TURN IT IN

Economists *W. J. Dunford and R. C. Rickard* pinpoint the best stage at which to sell a piece of machinery

COSTS involved in owning and operating any machine are of three kinds:—the purchase price; the repair costs necessary to maintain it in efficient working order and the running costs, comprising fuel and servicing expenses. Of these only the first two (purchase price and repair costs) need concern us since it is assumed that repairs will include such maintenance as will render both quality of service and running costs constant. The latter are therefore considered to be unrelated to length of working life.

The longer a machine is kept, the greater will be the period over which its initial price is spread. At the same time, repair costs will be incurred at an increasing rate. The total of the purchase price and the accumulated repair costs at any stage in the machine's life may for our purpose conveniently be termed "holding cost".

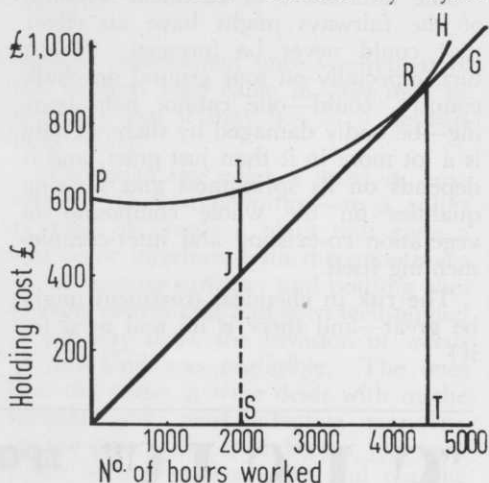
We have taken a medium Diesel tractor costing £600 new, as an example, and we have prepared a typical schedule of cumulative repair costs over its life, measured in hours worked. The holding cost of the tractor is shown in diagrammatic form above right.

Cost Curve

The initial and replacement price of the tractor (£600) is shown at point P on the vertical axis. By adding successive cumulative totals of repair costs to the initial price, the holding cost curve PH is obtained. The slope of PH is seen to steepen over its length as total repair cost increases with age. Thus, at 2,000 hrs., holding cost is £635, and holding cost per hour worked is £635 divided by 2,000. This equals 6.35 shillings per hour.

Assuming no second-hand value to be realisable, the optimum time of replace-

ment is seen to be at T, after 4,500 hours, at which point the lowest holding cost per hour (RT divided by OT) is achieved — £900 divided by 4,500



This diagram enables one to work out the best time at which to sell a tractor or any other piece of machinery.

equalling 4s. per hour. Replacement earlier or later than point R will clearly result in a higher holding cost per hour being incurred.

When trade-in facilities are available, the diagram shows the minimum exchange value the owner should be prepared to receive for his tractor if he decides to replace it before it has worked 4,500 hours (point T).

Holding Cost

Suppose a farmer who owns a tractor which has worked 2,000 hours (shown by point S on the horizontal axis) and is undecided whether or not to replace it by a new one.

In order to achieve an average holding cost no greater than he would have incurred had he kept it until point T, he would have to receive a second-hand



By Appointment to Her Majesty the Queen
Motor Mower Manufacturers Charles H. Pugh Ltd.

ATCO

GANG MOWERS

for
**LARGE AREA
MOWING**



Reliable... Adaptable... Manoeuvrable

There are two models of the new Atco Gang Mowers available. No. "1" is a general purpose mower, and No. "2" designed for extremely heavy duty.

The unique ganging arrangement allows for multiples of one unit upwards making subsequent conversions very economic.

A particularly outstanding feature applied to both models, is the totally enclosed all-gear drive. All the gears run in an oil bath which makes for extremely low maintenance in respect of time and cost.

Atco Gang Mowers are only some of the many machines in the Atco complete range from the 12" roller type to the 34" roller type with a full range of Rotaries, Sidewheels and the Atcosythe.



DEMONSTRATIONS can be arranged on your own turf.

We will gladly make an appointment for you **NOW**.

...AND REMEMBER IT IS ATCO FOR LIFE!

The quality of ATCO service has been a bye-word for the past 40 years. Every ATCO can be serviced from one of the many ATCO-owned branches, and everywhere there is an ATCO Engineer ready to advise and help you with your motor mowing problems.

CHARLES H. PUGH LTD., P.O. Box 256, Atco Works, Birmingham 9

value of £235, represented by the line IJ. This restores him to the minimum average holding cost of 4s. The distance between the holding cost curve PH and the minimum average cost line OG can be regarded as the lowest exchange value which could induce the owner to consider replacing the existing machine with a new one.

Extracts at intervals of 500 hours from the data presented in the diagram are shown in Table I.

ment of machinery. In fact, provided the farmer's anticipated income would be taxed at a constant rate, capital allowances, with the exception of the investment allowance, in themselves are largely irrelevant to the timing of replacement.

Investment allowance excepted, capital allowances given prior to the machine's disposal are little more than provisional. The balancing charge ensures that the initial and annual allowances given in

Table I.— Total Holding Cost and Break-Even Exchange Prices for a Medium Diesel Tractor Costing £600 New

Working Life	Total Holding Cost	Holding Cost per Hour Worked	Exchange Value Required to Equate Minimum Holding Cost of 4s per Hour
Hrs.	£	Shillings	£
0	600	—	—
500	600*	24.00	500
1,000	608	12.16	408
1,500	618	8.24	318
2,000	635	6.35	235
2,500	660	5.28	160
3,000	700	4.67	100
3,500	750	4.29	50
4,000	820	4.10	20
4,500	900	4.00	0
5,000	1,020	4.08	—

Over the first 500 hours, the maker's warranty will be in operation and there will be no liability for repairs.

The column on the right of the table shows the minimum exchange value required to attain an average holding cost equivalent to that obtainable had the tractor been kept until it had worked 4,500 hours.

Tax Allowances

Under present conditions there are factors other than the initial and replacement price and the cumulative repair cost which must be taken into account. Of these, the most important are probably income tax allowances, the need to keep up to date with technical improvements and the increased risk with age of mechanical failure.

The question of income tax is very much to the fore. The substantial capital allowances which are frequently available in the early years of a machine's life are thought of as a strong inducement to a more frequent replace-

ment of machinery. In fact, provided the farmer's anticipated income would be taxed at a constant rate, capital allowances, with the exception of the investment allowance, in themselves are largely irrelevant to the timing of replacement.

Market Rate

Similarly, a balancing allowance is given should the actual market depreciation exceed the total of allowances already given. It is, therefore, the market rate of depreciation (that is, purchase price less value realised upon sale or exchange) which eventually determines the amount of the initial and annual allowances finally retained.

The principles governing replacement as described earlier are thus in no way affected.

Technical improvements are likely to result in obsolescence in earlier models, and this may be a factor in the timing of replacement. Innovations will tend to depress the second-hand value of out-

Continued on page 10.

BY APPOINTMENT TO



HER MAJESTY THE QUEEN

SEEDSMEN
CARTERS TESTED SEEDS LTD.

The New Dunham Forest Golf Course Cheshire



A Fine View of the 2nd Green

This new 9 hole course in Cheshire was planned by Mr. John W. Bealey, our Golf Course Architect, and constructed in nine months under his direction. Sown throughout with Special Mixtures of Carters Tested Grass Seeds, the course was officially opened for play on the 4th June, 1961. Many golfers from other Clubs attending the opening Ceremony, commented upon the excellence of the course

Golf Course Architects and Grass Seed Specialists

The 1962 Edition of our illustrated booklet:—
“Treatment of Golf Courses and Sports Grounds”
free on request

Carters
TESTED SEEDS LTD

**RAYNES PARK,
LONDON, S.W.20**

TIME TO TURN IT IN—*continued.*
of-date models, so that there is little likelihood of the owner achieving the minimum exchange value needed to induce him to part with his existing machine.

If, under these circumstances, the owner is still prepared to undertake replacement, then the real cost to him of the improvement element of the new machine is the amount by which the trade-in value (plus the tax relief from any investment allowance) falls short of the minimum exchange value otherwise indicated.

Old Risks

The risk of mechanical failure increases as a machine gets older. Break-downs at busy periods may prove expensive both in terms of the cost of emergency repairs and the disruption of farming operations. Although break-downs will be minimised by proper

attention to maintenance and repairs, failure cannot be ruled out entirely.

Where a farmer is particularly concerned at this risk, he would be advised to replace at the first opportunity of securing the minimum exchange value rather than defer replacement in the hope that more favourable trade-in terms might subsequently materialise.

The example used in this article is a realistic one, but it relates to one type of tractor only, operating under average conditions. Its usefulness lies in the fact that it can readily be adapted by the individual, in the light of his own experience, to suit a wide range of machinery and working conditions.

With grateful acknowledgments to the authors and the "Farmer and Stock-breeder".

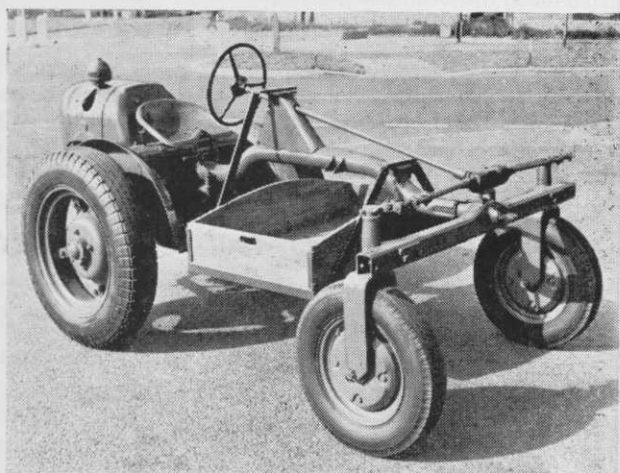
Get on to GIBBS

and save money
with economical
golf course
equipment

The David Brown 2D is the ideal tractor for hauling gang mowers, trailers and every kind of golfcourse and sportsfield equipment. It is light in weight, completely reliable and the air-cooled twin cylinder engine uses less than 2 pints of diesel fuel per hour—a saving on fuel bills alone. Let us arrange a demonstration.

You will not be under the slightest obligation.

Spiked steel rear wheels are available for wet conditions



(Illustrated: The David Brown 2D Tractor with Gibbs tray for transporting hand mowers and light loads)

ESTD.
1844
J. GIBBS
LTD.

BEDFORD·MIDDLESEX

Phone: Feltham 5071



By Appointment to
Her Majesty
Queen Elizabeth II
Suppliers of
Agricultural Machinery
and Implements

SPECIALIST DISTRIBUTORS AND AUTHORISED REPAIR AGENTS FOR RANSOMES LAWN MOWERS

GET RID OF

GAMEKEEPERS and SOCIETIES

and the pigeons and rabbits will go too,

says JOHN CHERRINGTON

WHEN the Government, fearful of pressure from the animal lovers, made it an illegal act to spread myxomatosis, it automatically made the extinction of rabbits an impossibility and at the same time turned into criminals a good many otherwise law-abiding farmers. As compensation for having removed the one sure method of control there is a subsidy for rabbit-clearance societies.

But these are themselves hamstrung in various ways. They cannot legally make use of myxomatosis as a method of control, they cannot use gin traps, and they are not compulsory on all farmers and landowners.

There is some pressure to make the sale of rabbits illegal, as was done in New Zealand. This would be an unenforceable provision in any case, and would provide no answer. Very few people today can possibly make a living out of the sale of rabbits. And it's most doubtful in this age of full employment if many young people would take on trapping for a living. Especially as the two most effective methods of destruction, still used in New Zealand, poison and gin traps, are denied them here.

Plenty of Noise

So far our Rabbit Clearance Societies are making a fair bit of noise and are not, I submit, killing a great many rabbits. As they are not compulsory the non-co-operators refuse to join, and to make matters worse many shooting owners refuse to allow their woods to be invaded by the Society's operators. Instead, they are allowed to do their own destruction with their own keepers.

This is a fundamental mistake. Keepers, in my experience, are possibly the worst pest destroyers in the world.

Of course, they fill their pantries with stoats, weasels, crows and the like, but who ever saw a rabbit hung up even in these days? All they kill are the enemies of the rabbits.

I could confidently guarantee the abolition of our two major pests, rabbits and pigeons, if, as a preliminary, I was allowed to abolish all gamekeepers. Pigeons only nest in our woods and hedges with such abundance because the "vermin" have been ruthlessly destroyed.

The question of the gin trap is one of some delicacy. If it had been illegal for domestic dogs and cats to trespass on other people's land no one would have said a word if their pet had come home with a damaged foot. After all, dozens of cats are killed and maimed on the roads every day, but no one has suggested making cars illegal.

Gin traps

I must say I don't like gin traps. When we used to use them I insisted that they were frequently inspected, but I don't believe they are in themselves any more cruel than any other method of destroying vermin.

Shooting leaves many rabbits to creep off and die. Gassing is acceptable only because we don't watch the death agonies in the depth of a burrow. A snare is not the quick despatch that people seem to imagine. At best it's strangulation, at worst it can be a long drawn-out agony, worse in a way than the gin, because the rabbit is caught by the body and not by a foot.

I think the way to look at the problem is that the rabbit, like the rat, the mouse, and other pests is an enemy of farming and hence of all people who eat food. Our enemies have to be destroyed in order that we all can live.

No one sheds a tear for the rat which is allowed to be poisoned with impunity. It's only the rabbit that seems to arouse the anger of the animal lovers.

Hypocritical

Yet their anger is so hypocritical. At the height of the myxomatosis row, which, if you remember, coincided with the final abolition of the gin trap, one prominent animal lover, in all other respects a most sensible man, threatened in conversation with me that if farmers persisted in destroying their rabbits in this way, then the enraged British public would boycott British food.

I believe they would, too. And go on making use of the products of countries like Australia and New Zealand where, of course, every possible variation of humane and inhumane methods of destruction are not only tolerated but encouraged by the authorities.

But to return to our Societies. They are incapable of containing the rabbit plague without the recurring onset of myxomatosis. The only system of destruction that seems available to them is gassing. This at best is only moderately successful as there is some doubt as to whether the gas penetrates into the burrows sufficiently far to kill all the rabbits. But the most serious drawback to gassing, even if 100 per cent effective is that it only affects rabbits that are to ground.

I just don't believe these stories of rabbits that have turned to living on top of ground because of the gassing of burrows or myxomatosis. Large numbers of rabbits always lived on top of the ground.

At Our Expense

The only time these are to ground is when they are breeding, and then as their stops are usually in the corn or under other dense growth they are fairly invulnerable. In the old days the way to deal with these was by open gin trapping in the Spring. Now they just breed away happily to do more damage, and to provide the operators of the Rabbit Clearance Societies further employment at ours and the Government's expense.

All in all then the Societies don't seem to make much impression on rabbit

numbers. In fact, I would say that they do as much harm in preventing the spread of myxomatosis by making burrows uninhabitable as they do good. My experience is that rabbits always return, that their numbers increase gradually to a certain point and then there is a recurrence of myxomatosis and practical extinction.

Contrary to popular belief there is no evidence that the disease is in any way less severe, simply that as there are fewer rabbits about the spread is less effective.

Try Nature

In France, where myxomatosis first appeared in Europe nine years ago there has been practically no widespread reappearance of the rabbit in any number, and the disease reappears almost when required as numbers rise, without human aid.

I suggest that the best policy here would be to let the Societies lapse and see if nature can keep them in check.

With grateful acknowledgments to the author and the "Farmer and Stock-breeder".



GOLF COURSE EQUIPMENT

Hole Tins	Tee Boxes
Cutters	Tee Plates
Staffs	Ball Cleaners
Mats	Tablets
Mowers	Rollers
Hose	Sprinklers
Mole Ploughs	Rotary Sifters
Aerating Machines	
and all	
Greenkeeping Tools	

H. PATTISSON & CO. LTD.
STANMORE · MIDDLESEX
Telephone GRImSyke 400

News



from the Sections

SOUTHERN

Chairman:
J. K. GLASS
(Thorpe Hall)

By W. Mason
Hon. Secretary:
18 Albert Road, Hendon, N.W.4.
Tel.: SUNnyhill 0245

ON BEHALF OF THE SECTION I would like to record a very hearty vote of thanks to Messrs. Sutton & Sons and their representatives, Mr. Rixon and Mr. Maxim, for a most interesting lecture on various grasses, which they gave on the 31st January. The lecture was illustrated with slides, and the many questions asked were answered in detail. It was very pleasing to see such a good attendance.

Owing to illness, our President, Mr. F. Chambers, was unable to be present and we would take this opportunity of wishing him a speedy recovery.

March Lecture

Our next lecture will take place on Wednesday, 28th March, at the Stirling Castle, at 6-30 p.m. This will be in the form of a "Quiz" with our Chairman, Mr. J. Glass, as Question Master.

Mr. A. E. Dash

We hear from Mr. A. E. Dash, who has now retired, that he received a cheque from his Club to mark the occasion which was given a very nice write-up in the local newspaper. We wish him good health and many happy years of retirement.

Appointment

Mr. P. Whitehead has been appointed Head Greenkeeper to the Rochford Hundred Golf Club. We send him best wishes for the

future. Private address: 2 Well House Cottages, Rochford, Essex.

NORTHERN

By J. Parker

Chairman:
G. W. MASON
(Halifax West End)

Hon. Secretary:
8 Goit Stock Terr., Harden,
Bingley, Yorks.

MEMBERS ARE REMINDED THAT the closing date for the return of counterfoils and monies for the Grand National Sweep is Saturday, 17th March. It is hoped that all tickets will be sold and so ensure the success of the Sweepstake.

Handicaps

The following adjustments of handicaps have been made:—K. Driver (8), F. Cox (15), F. Kenny (15), S. Bailes (20) and D. Scott (24).

Ties and Blazer Badges

I have still a number of Association Ties for sale at 10/6 each, also two Blazer Badges which I will be pleased to supply to any member of the Association on receipt of 30/-.

March Lecture

Our March Lecture will be held on Tuesday, 20th March, at 7-15 p.m., at the White Swan, Call Lane, Leeds. This will be in the form of a Film Show of two Penfold Swallow Tournaments.

KEEP'S

GRANULAR SPRING FERTILISERS

N. P. K.
8 - 12 - 8

N. P. K.
7 - 7 - 7

The economical
Dressing for Fairways

★
"RECORD" GRASS FERTILISER
for Better Greens

★
SUPERFINE MOWRAH MEAL
SUPPLEX WORMKILLER

★
FRANK KEEP (1958) LTD.

82-84 NORTH END
CROYDON, SURREY

Telephone : CROYdon 0734

MIDLAND

By F. Cashmore

Chairman:
G. HART
(Gay Hill)

Hon. Secretary:
76 Four Oaks Common Road
Sutton Coldfield, Warwickshire.

MEMBERS WILL BE SORRY TO HEAR of the death of Charlie Fletcher of the Worcester County Golf Club on the 21st January. He will be sadly missed at our Tournament and other functions. On behalf of the Association I have expressed sincere sympathy to Mrs. Fletcher and family, and requested that they should let me know if there is any way in which we can be of assistance.

Tournaments

Our Spring Tournament will take place on Tuesday, 1st May, at the Tamworth Golf Club, by courtesy of the Committee. More details will be published next month.

Our President, Mr. Carl Bretherton, has fixed the date of his Annual Match for Thursday, 7th June, at Handsworth Golf Club. We may expect Mr. Bretherton to have a strong team, so the Greenkeepers must polish up their game.

Visit

Our thanks to George Wilson who has arranged for us to visit the Massey Ferguson factory on Wednesday, 28th November. The number of the party is limited to 30 members, and I am sure we can look forward to a very interesting day.

Subscriptions

There are still a number of subscriptions outstanding. As we are nearing the end of the financial year, 30th April, the Treasurer hopes that this reminder will produce results and so help to clear the books.

NORTH-WEST

By B. Ellis

Chairman
O. P. JONES
(Bramhall G.C.)

Hon. Secretary:
Romiley G.C.

IN THE JANUARY ISSUE OF THE journal, I stated that Mr. Watson is Chairman of the Greens Committee at Birkdale Golf Club. This is incorrect and I wish to apologise most sincerely for my mistake and amend as follows. E. H. Watson, Esq., 10 Kossal Road, Ansdell, Lytham St. Annes (Chairman of Greens, Fairhaven Golf Club).

We welcome, also, the following new Hon. Associate Member: J. W. Parker, Esq., Great Lever & Farnworth Golf Club, Bolton (Chairman of Greens).

Spring Tournament

Our Spring Tournament will be held on 2nd May at the Bramhall G.C., by kind permission of the Council.

CANNOCK

FUSARIUM SPECIFIC

THE RECOGNISED CURE FOR
FUSARIUM NIVALE
THE DREADED 'BROWN PATCH.'
A full descriptive and illustrated
brochure available on request.

GRASS SEEDS

FINEST QUALITY AT
COMPETITIVE PRICES

The Cannock Agricultural Co., Ltd.,
Cannock, Staffs.
Fertiliser Manufacturers and Seedsmen
for over a Century.

WELSH

By J. O'Gorman

Chairman:
M. GEDDES
(Royal Porthcawl)

Hon. Secretary:
12, Cornerswell Road,
Penarth, Glam.

THE SPRING COMPETITION FOR the President's Shield will take place at the Pennard Golf Club, near Swansea, on Tuesday, 3rd April, by kind permission of the Captain and Committee.

The Competition is over 27 holes, 9 in the morning and 18 in the afternoon. Will members who intend taking part please let me know a fortnight prior to the date as arrangements have to be made for catering. I hope we have a good attendance and a fine day on this beautiful course on the Gower Coast.

EAST MIDLAND

By S. T. McNeice

Chairman:
S. TALBOT
(Wollaton Park)

Hon. Secretary:
40 Edward Road,
Clarendon Park, Leicester

OUR SPRING TOURNAMENT WILL be held over the Sherwood Forest Golf Club, Mansfield, on Wednesday, 9th May, by kind permission of the Captain and Committee.

MISCELLANEOUS

PROFESSIONALS AND GREENKEEPERS having stocks of used golf balls contact Sparkbrook Golf Ball Co., 295 Highgate Road, Stoney Lane, Birmingham, with a view to filling export orders.

HON. SECRETARY'S NOTES



Book Review

Readers of the Greenkeeper will be familiar with Mr. David Bowen's long range weather forecasts which appear in alternate months last year. Now he has written a do-it-yourself guide for short range forecasters who like to interpret local indications. "How to tell the weather" (Sunday Times Book Publications 3/6.) has twelve pages of text, alternating with twelve pages of admirable photographs and charts which will give assurance and precision to those who must govern daily tasks in part by quick assessments of the sky.

A description of cloud formations and wind factors lays the basis of a forecasting method and sections on weather sayings, natural phenomena, and the barometer fill in curious and useful detail.

It is comforting to learn that the author does not consider that even electronic computers will ever make weather forecasting an exact science and that your local verdict may well be more useful than the regional forecasts prepared by the experts. Even so, you will do well to keep in mind the broader picture which their charts reveal.

This is a bright attractive little booklet. Perhaps the layout of the reading matter suffers from the fact that every other aspect of the production is such excellent value, but who will grumble at that if waterproofs are at hand when the raindrops fall.

F.W.H.

F. G. HAWTREE MEMORIAL FUND

The Trustees of the Fund have two reservations for the Autumn Course of Instruction to be held at the Sports Turf Research Institute, Bingley, Yorks., in 1962, and invite applications from Greenkeepers for these places. Unfortunately there is no further accommodation for the Spring Course, and members are advised to make early application for Autumn, as there is a growing demand.

Applicants should state whether their Club can make a contribution to the expenses and registration fees. Head Greenkeepers are asked to bring the scheme to the notice of promising members of their staff. Age, experience, and any relevant details should be given. The fund pays all or part of all travel and living expenses.

C. H. DRX.

AGENTS FOR
CROYDEX

PLASTIC
HOSE &
SPRINKLER
HOSE

GOODENOUGH
PUMPS

Pumping under
all conditions

**CLYDE BUILT
TRACTOR CABS**

A. C. BANKS & CO.

(LATE OF ALLAN TAYLOR (ENGINEERS) LTD.)
149 COPSE HILL, WIMBLEDON, S.W.20
TELEPHONE: WIMBLEDON 1768

TRACTORS FOR GOLF COURSES, SPORTS GROUNDS,
PARKS, ETC., and ALL EQUIPMENT FOR MAINTENANCE

ALL MAKES OF
MOWERS

SUPPLIED AND
REPAIRED

SAWS
CIRCULAR
CROSS CUTS
SHEARS

Repairs and
Grinding



MARCH

- 8th East Midland Section, N.A.G. Film Show, Blue Boar, Southgate Street, Leicester.
- 9th Southern Section, Annual Dinner, Talbot Restaurant, London Wall, E.C.
- 20th Northern Section, Film Show, White Swan, Call Lane, Leeds.
- 22nd East Midland Section, N.A.G. Lecture, Blue Boar, Southgate Street, Leicester.
- 28th Southern Section, Lecture, Stirling Castle, 6-30 p.m.

APRIL

- 3rd Welsh Section, Spring Competition, Pennard Golf Club, Nr. Swansea.
- 26th Northern Section, Spring Tournament, Otley Golf Club.

MAY

- 1st Midland Section, Spring Tournament, Tamworth Golf Club.
- 2nd North West Section, Spring Tournament, Bramhall Golf Club.
- 9th East Midland Section, Spring Tournament, Sherwood Forest Golf Club, Mansfield.

JUNE

- 7th Midland Section, President's Match, Handsworth Golf Club.

AUGUST

- 13th, 14th and 15th B.G.G.A., A.G.M. and Annual Tournament, Pyle and Kenfig Golf Club.

NOVEMBER

- 28th Midland Section, Visit to Messrs. Massey Ferguson.

THE SCOTTISH GOLF GREENKEEPERS' ASSOCIATION

EAST SECTION

A LECTURE WAS HELD IN THE Free Gardeners Institute on Thursday, 18th January. The speaker was Mr. J. D. Joss of the S.T.R.I., who gave a very interesting talk. A vote of thanks on behalf of the Section was proposed by our Chairman, Mr. H. Smith.

A. HUISH, *Secretary*.

NORTH AND MIDLAND SECTION

SOCIAL EVENING — TICKETS MAY still be obtained for our Social Evening to be held in Nicoll & Smibert's Rooms, Dundee, on Saturday, 17th March, at 7 p.m., from members of the Committee.

New Member

We welcome Mr. R. Scott of Arbroath Golf Club to our Section.

W. RITCHIE, *Secretary*.

SITUATIONS VACANT

JAMAICA — GREENKEEPER with top qualifications wanted for new 18 hole Golf Course at Montego Bay. Knowledge of tropical grasses an asset. Single man preferred. Living accommodation and board provided. Salary £1,200-£1,500 according to qualifications. Passage paid. Write fullest details to Box No. 363, "British Golf Greenkeeper".

HEAD GREENKEEPER required for N.E. Scotland. Championship Course (18 holes and 9 holes). Normal staff, 3-4. House available. Salary according to qualifications. Commencing 1st June, 1962. Apply Box No. 362, "British Golf Greenkeeper".

FULL-TIME GREENKEEPER required by Massereene Golf Club, Antrim, N. Ireland (9 holes). House available. References and details of experience to the Hon. Secretary.

By Appointment to Her Majesty the Queen



Motor Mower Manufacturers, Charles H. Pugh Ltd.

ATCO

FOR THE GOLF COURSE - AND FOR LIFE

PARTICULARLY

THE 20" SPECIAL

**FOR "SUPERFINE"
MOWING OF GREENS**

This "self-contained" motor mower is fast becoming recognised as the best machine of all for the maintenance of the perfect finish required for Putting Greens. The specification is complete and will maintain peak performance — for life.



ATCO's range of equipment for Golf Courses covers every possible requirement, from the 12" Roller type right up to the 34" Roller type, and Gang mowers as well. Then of course, there is a full range of Rotaries, Sidewheels and the Atcoscythe.

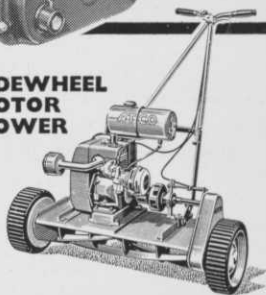
**AND PERHAPS MOST IMPORTANT
OF ALL, IMPECCABLE SERVICE.**

EVERYWHERE there is an ATCO Engineer attached to an ATCO owned Branch ready to advise on any problem in connection with grass cutting.

* **DEMONSTRATIONS OF ANY ATCO
CAN BE ARRANGED TO SUIT YOU
OR YOUR GREENS COMMITTEE**

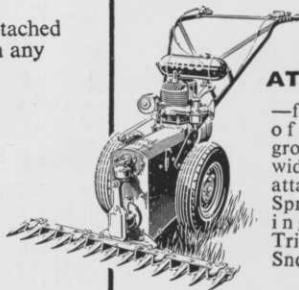
**CHARLES H. PUGH LTD.,
P.O. Box 256, Atco Works, Birmingham 9**

**SIDEWHEEL
MOTOR
MOWER**



—fully power propelled
in 20" and 24" cutting widths.

ATCOSCYTHE



—for every type
of rougher
growth with a
wide range of
attachments for
Spraying, Saw-
ing, Hedge
Trimming and
Snow Ploughing

What would the course be like



without **PARKERS?**

Mowers • Motor Scythes, all makes and types • Tractors
Aeration Equipment • Sprayers • Harrows • Sprinklers,
etc., etc. • Mowrah Meal • Lead or Calcium Arsenate
Fertilizers of all types • Grass Seeds of the finest quality
Stock mixtures or to your specification • Loams: Light,
Medium, Heavy, for all purposes, etc., etc.

IMMEDIATE DELIVERIES FROM STOCK

T. PARKER & SONS (TURF MANAGEMENT) LTD

THE SPORTICULTURAL SPECIALISTS

WORCESTER PARK . SURREY . Tel.: DERwent 7791 (6 lines).