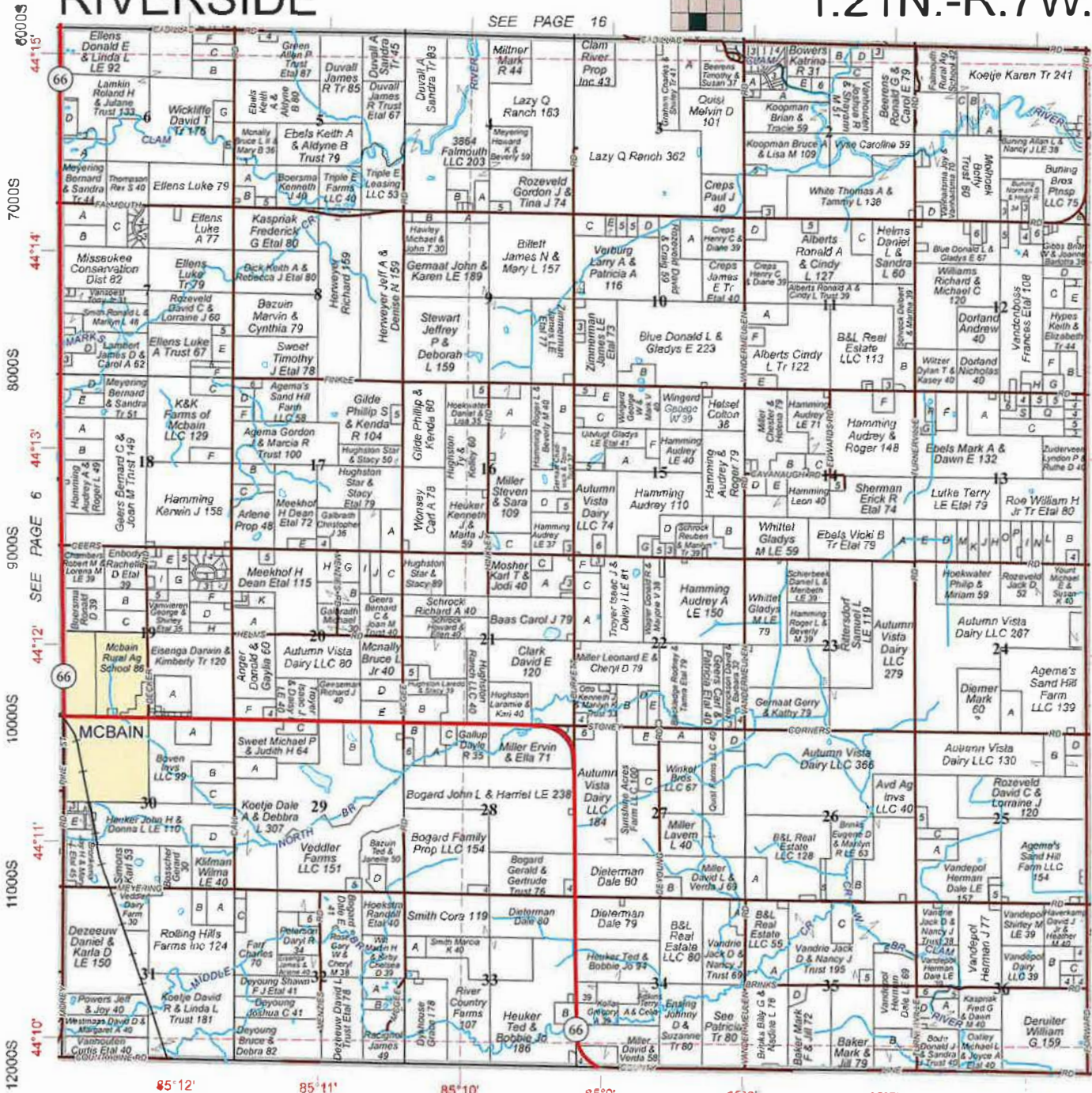


RIVERSIDE

SEE PAGE 16

Refer to page 41 for keyed parcels
T.21N.-R.7W.



© 2023 Rockford Map Ptbls., Inc.

OSCEOLA COUNTY

Missaukee County, MI

6000W 5000W 4000W 3000W 2000W 1000W 0



231-775-1361

www.greenstonefcs.com

REAL ESTATE APPRAISERS



CERTIFIED - MICHIGAN
Joseph D. Schaafsma

CERTIFIED - MICHIGAN
Robert D. Schaafsma, SRA

231-775-3980

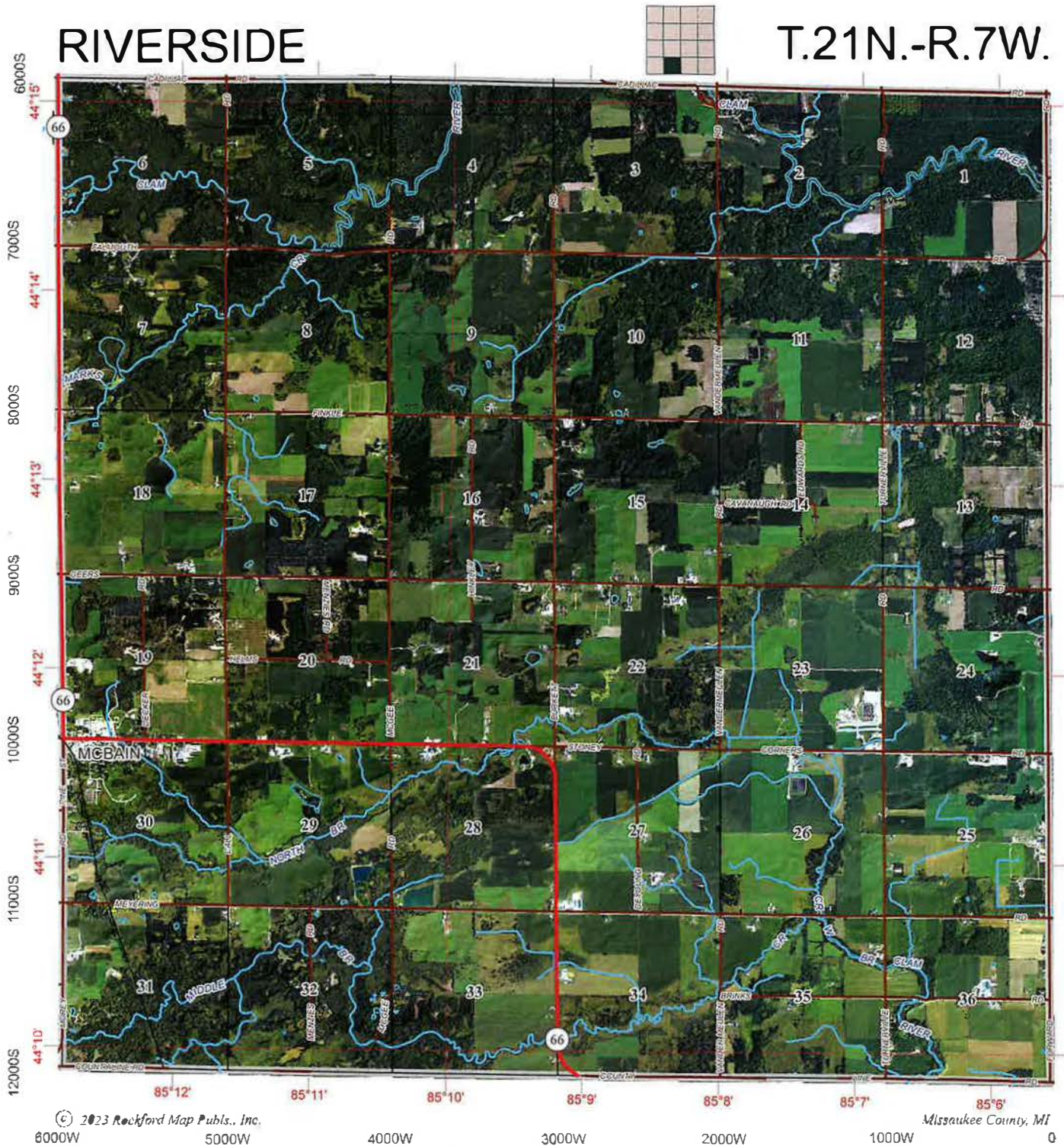
In business for over 45 years. Trusted name. Superior service.

qnw@quadrantnorthwest.com

217 N. Mitchell Street · Cadillac, Michigan 49601

RIVERSIDE

T.21N.-R.7W.



© 2023 Rockford Map Pubs., Inc.
6000W 5000W

Missaukee County, MI
0

Latitude and Longitude

Latitude and longitude information is a coordinate system written in degrees (°) and minutes (') and uses a grid that enables us to precisely locate a particular place or point on the earth's surface.

Latitude lines, or parallels, run horizontally across the surface of the map and is the angular distance north or south from the equator of a particular point on the earth's surface. The degrees continue 90° north and south, with 0° being located at the equator.

Longitude lines, or meridians, run vertically and is the angular distance of a particular point east or west of the prime meridian at 0° located in Greenwich, England. The degrees continue 180° east and 180° west where they come together to form the International Date Line in the Pacific Ocean.

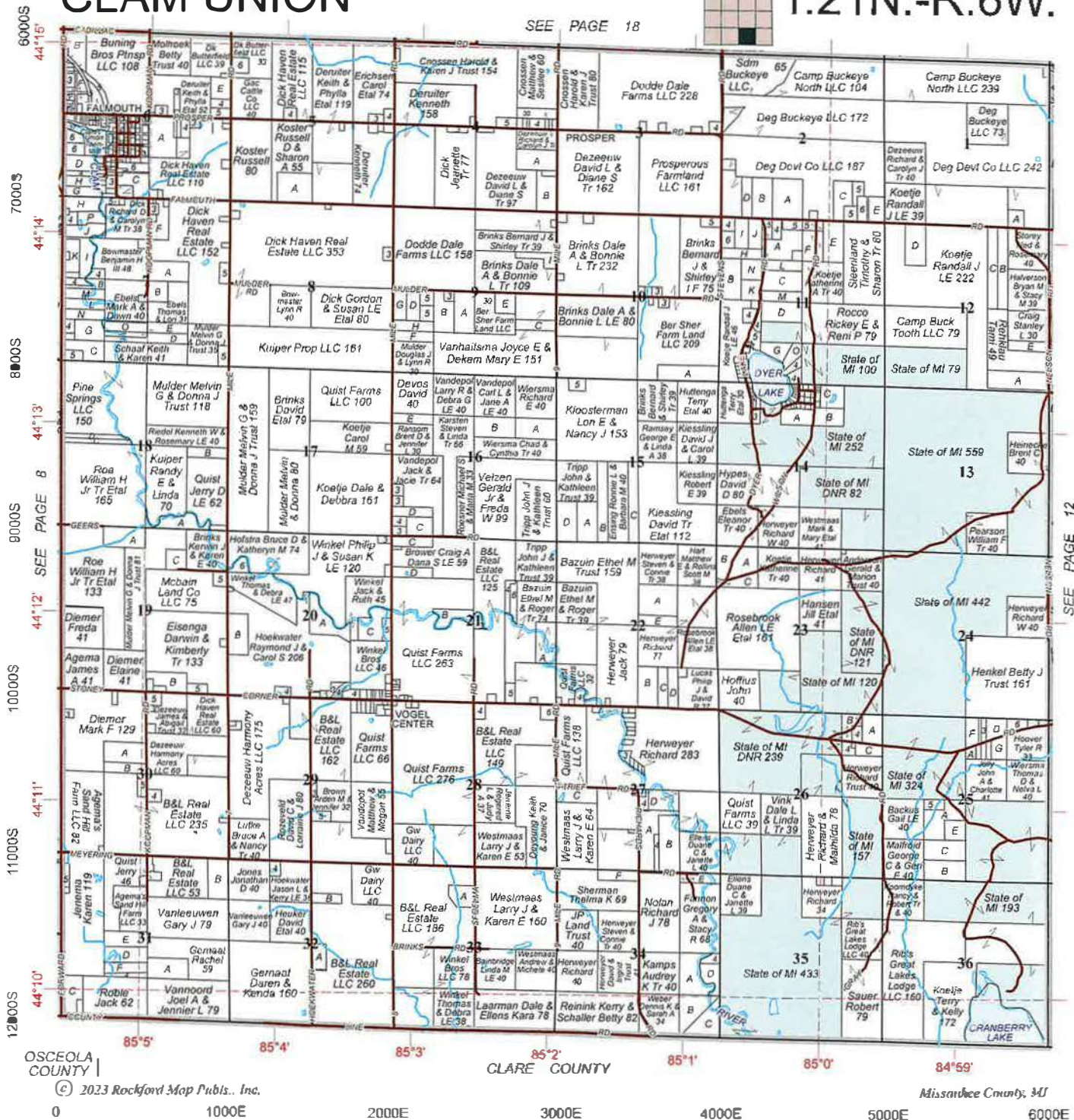
Degrees latitude and longitude are divided into minutes and seconds for more precision in finding a particular point on the earth. There are 60 minutes in each degree and each minute is divided into 60 seconds. Rockford Map Publishers is located at 42°16'N, 89°5'W (42 degrees and 16 minutes north of the equator and 89 degrees and 5 minutes west of the meridian in Greenwich, England).

CLAM UNION

Refer to page 42 for keyed parcels

T.21N.-R.6W.

SEE PAGE 18



SEE PAGE 12

Osceola County

© 2023 Rockford Map Publs., Inc.

0 1000E 2000E 3000E 4000E 5000E 6000E

Ebels
HARDWARE

231-826-3334
490 Prosper Road
Falmouth, Michigan 49632
www.ebelshardware.com

LS Tractor
Husqvarna
Do it Best

BUY | SELL | TRADE FIREARMS

100+ different models of Husqvarna equipment in stock to serve your every need!

Clare County

Missaukee County, MI

McBain Building Products
Committed to Quality

A Full Service Lumber Yard and Hardware Store

231-825-2110
302 N. Pine Street (M-66) • McBain, Michigan 49657
mcbain_building_products@hotmail.com

CLAM UNION



T.21N.-R.6W.



© 2023 Rockford Map Pubs., Inc.

Missaukee County, MI

0 1000E 2000E 3000E 4000E 5000E 6000E

Thank You!

FOR YOUR SUPPORT OF BOTH THE 2014 AND 2018
MISSAUKEE CONSERVATION DISTRICT MILLAGE REQUESTS!

It will be on the ballot again in 2024! Your support is greatly
appreciated and we look forward to continue serving you!

www.missaukeecd.org

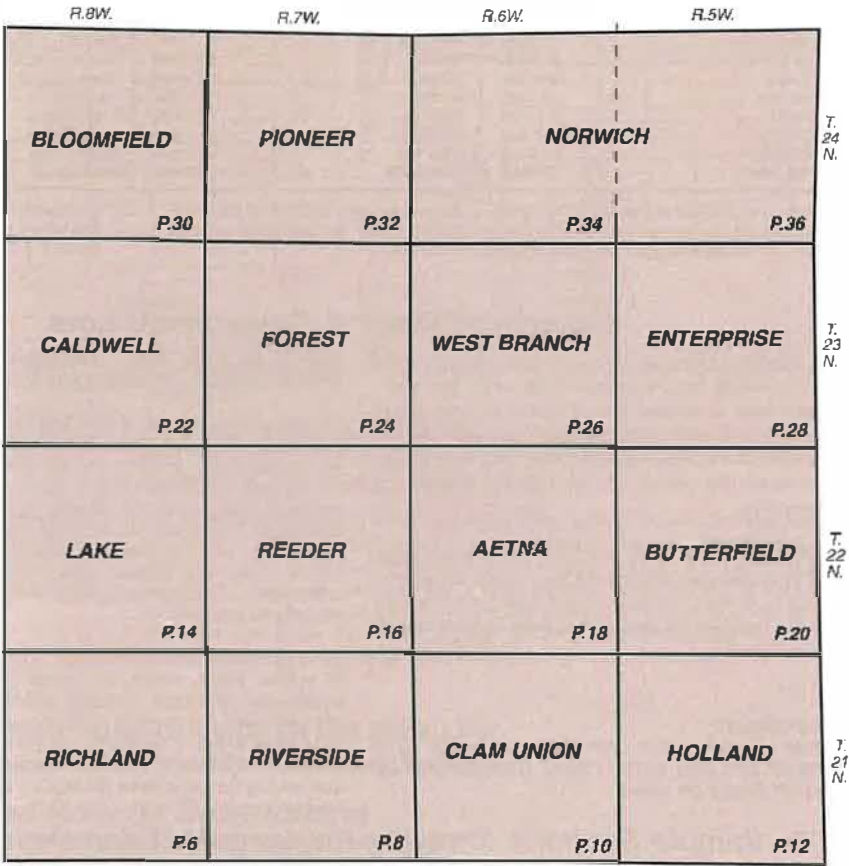
MISSAUKEE COUNTY, MICHIGAN

INDEX MAP

The index map shows the various townships in the county as they are located geographically. The numbers on each township indicate the page number where that particular map will appear in detail.

ALPHABETICAL INDEX TO TOWNSHIP MAPS

Township	Page
AETNA	18
BLOOMFIELD	30
BUTTERFIELD	20
CALDWELL	22
CLAM UNION	10
ENTERPRISE	28
FOREST	24
HOLLAND	12
LAKE	14
NORWICH	34,36
PIONEER	32
REEDER	16
RICHLAND	6
RIVERSIDE	8
WEST BRANCH	26



RESPECT LANDOWNER RIGHTS

Some lands located within the boundaries of Forests, Parks, Recreational areas, Wildlife, Game or Conservation areas may be privately owned. Also, County, State or Federal owned lands may be subject to leases or other interests held by private entities. **These privately controlled lands may or may not be open to public hunting.** Always look for posted signs, which identify lands open or closed to hunting and contact the landowner when indicated. **Please do not trespass.**

For further information contact your local Department of Natural Resources or US Fish and Wildlife Service.

This book includes the most current National Agricultural Imagery Program (NAIP) photography for each corresponding township. This public domain imagery is sourced from the USDA.

LEGEND

CIVIL TWP BORDER —————

CONG. TWP. BORDER - - - - -

LEGEND FOR TOWNSHIP MAPS

<p>PUBLIC LANDS IN PARKS</p> <p>PUBLIC LANDS IN STATE OF MICHIGAN FORESTS</p>	<p>INTERSTATE HIGHWAY</p> <p>FEDERAL HIGHWAY</p> <p>STATE HIGHWAY</p> <p>OTHER ROAD</p>	<p>RAILROAD</p> <p>INCORPORATED CITY OR VILLAGE</p> <p>CORPORATE LIMIT LINE</p> <p>CIVIL TOWNSHIP BOUNDARY</p>
	<p>LATITUDE / LONGITUDE</p> <p>RURAL ADDRESS GRID NUMBER</p> <p>HOOK MEANS SAME OWNER FOR BOTH PARCELS</p> <p>SCALE: 1 1/8 INCH EQUALS 1 MILE</p>	<p>ABBREVIATIONS</p> <p>AGT. AGENT</p> <p>A.K.A. ALSO KNOWN AS</p> <p>C.D. CONTRACT DEED</p> <p>CONS. CONSERVATOR</p> <p>C.S.M. CERTIFIED SURVEY MAP</p> <p>CUST. CUSTOMER</p> <p>D.B.A. DOING BUSINESS AS</p> <p>ETAL. AND OTHERS</p> <p>ETUX. AND WIFE</p> <p>ETVIR. AND HUSBAND</p> <p>EXEC. EXECUTOR</p> <p>HRS. HEIRS</p> <p>(L.C.) LAND CONTRACT</p> <p>(L.E.) LIFE ESTATE</p> <p>L.L.C. LIMITED LIABILITY COMPANY</p> <p>L.P. LIMITED PARTNERSHIP</p> <p>(L.U.) LIFE USE</p> <p>R.O.W. RIGHT OF WAY</p> <p>T.F. TAX FORFEITED</p>

G
1413
.M55
R6
2023

M

MISSAUKEE COUNTY MICHIGAN



Tree Seedlings packaged for an order



Bumblebee on Northern Blazing Star



Monarch Butterfly



Pollinator Planting



Bumblebee on Wild Lupine

2023-2025 PLAT BOOK

Compiled and Published by:
ROCKFORD MAP PUBLISHERS, Inc.
www.rockfordmap.com
Your trusted source for parcel maps & spatial data.



Distributed by:
MISSAUKEE CONSERVATION DISTRICT
101 S. Main Street
Lake City, MI 49651
231.839.7193
www.missaukeecd.org

Mailing Address:
PO Box 965
Lake City, MI 49651