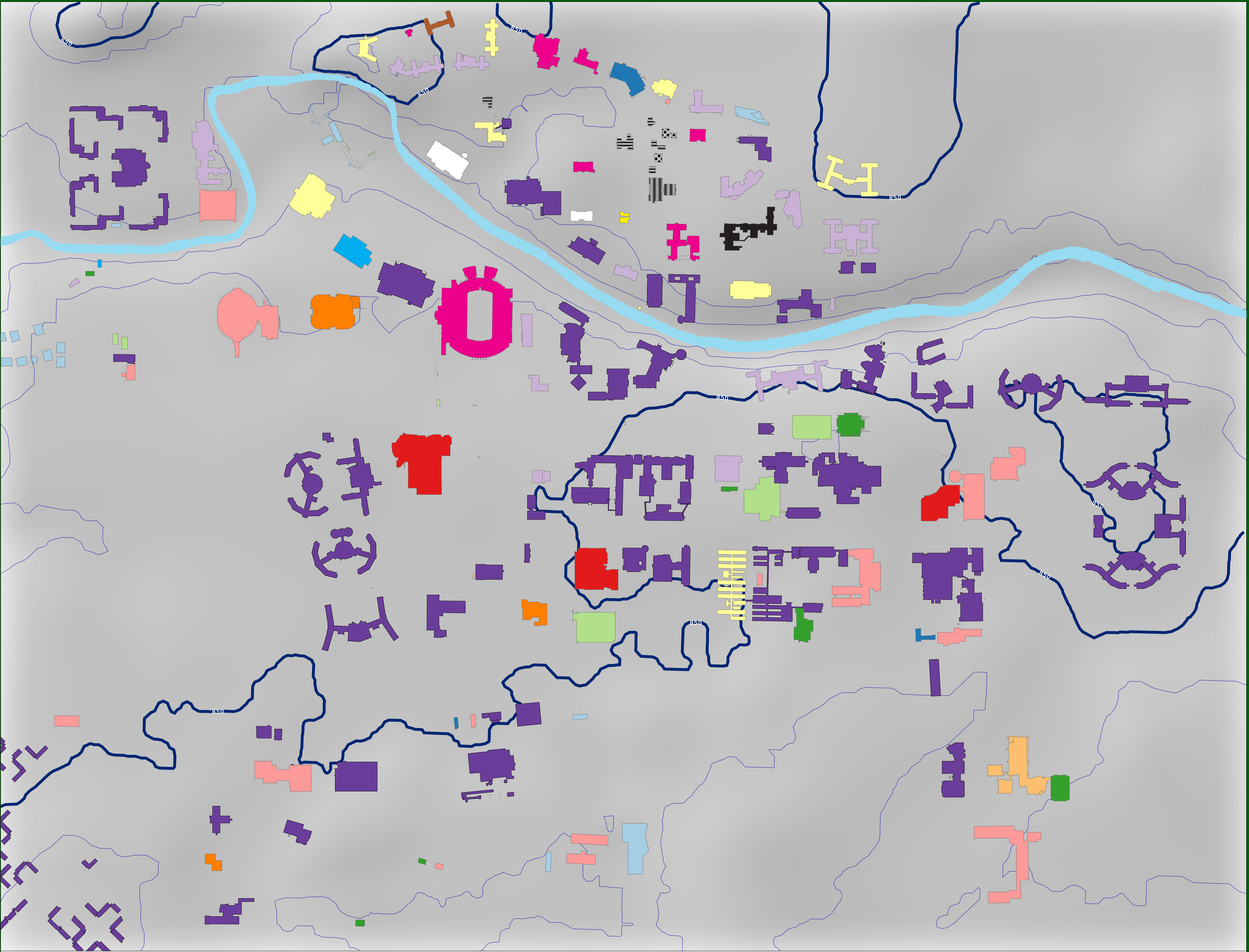


On the Banks of the Red Cedar

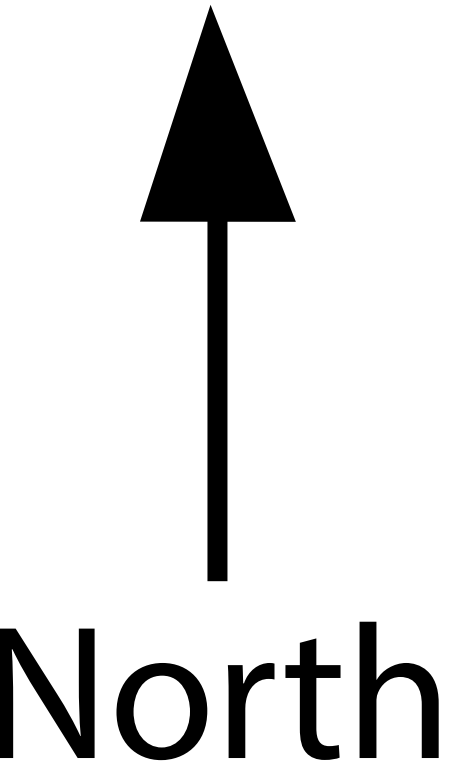
East Lansing, MI
Michigan State University Campus
Building Construction Dates by Football Coach
by Chris Svoboda
GEO426 Thematic Cartography - Spring 2015



Legend

Coaches

- Mark Dantonio (2007-Present)
- John L. Smith (2003-2006)
- Bobby Williams (2000-2002)
- Nick Saban (1995-1999)
- George Perles (1983-1994)
- Muddy Waters (1980-1982)
- Darryl Rogers (1976-1979)
- Denny Stolz (1973-1975)
- Duffy Daughtery (1954-1972)
- Clarence Munn (1947-1953)
- Charlie Bachman (1933-1942, 1944-1946)
- Jim Crowley (1929-1932)
- Harry Kipke (1928)
- Ralph H. Young (1923-1927)
- Albert Barron (1921-1922)
- Dutch Sommer (1916)
- John Macklin (1911-1915)
- Chester Brewer (1903-1910, 1917, 1919)
- George Denham (1901-1902)
- Pre-Football (1855-1900)
- Red Cedar River



Elevation in feet above sea level
Contour interval ten feet