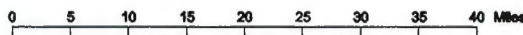




Landtype Associations of Section VII

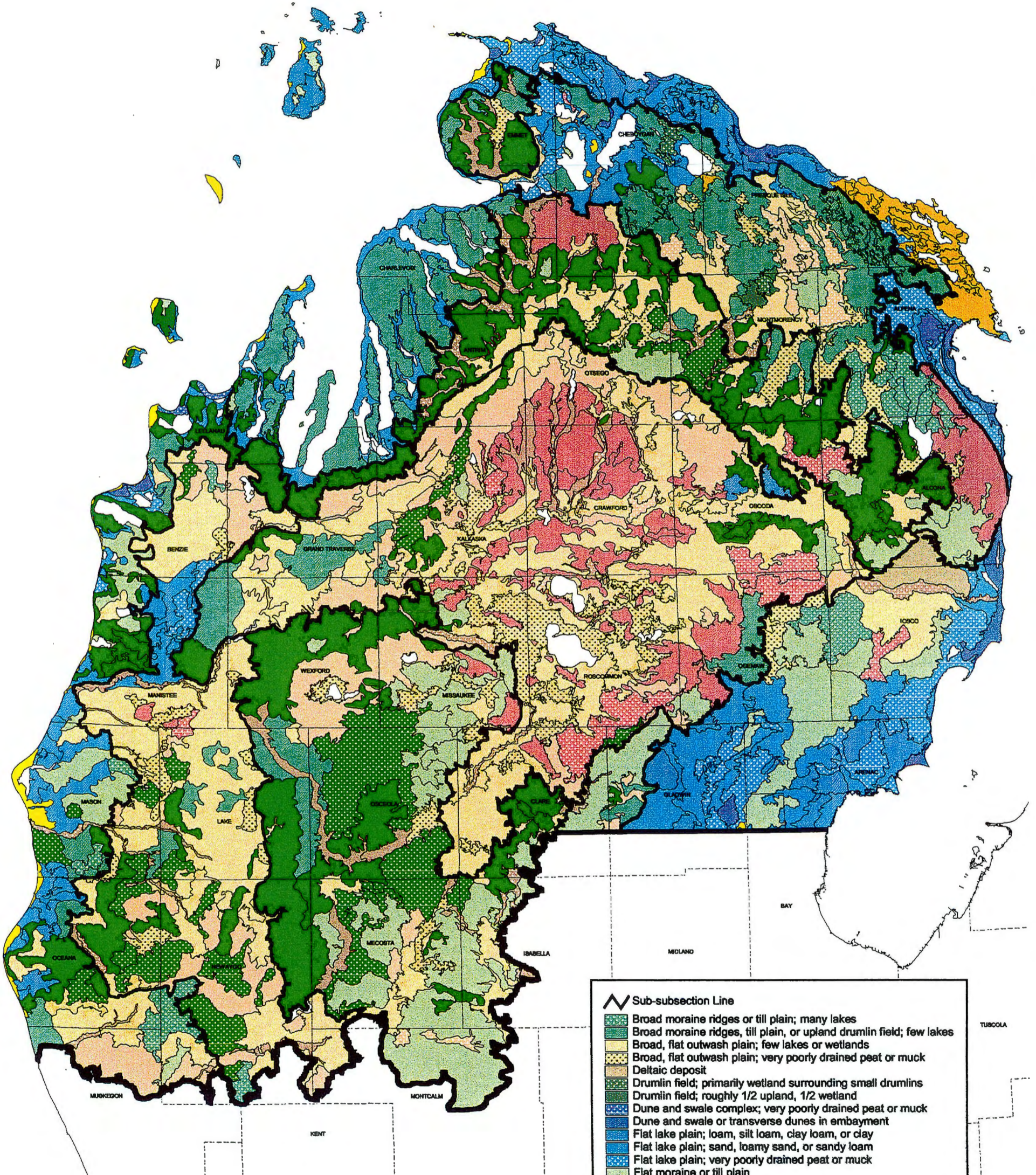
R. A. Comer and D. A. Albert, compilers
Michigan Natural Features Inventory
Lansing, Michigan
1999



Northern Lower Michigan



Ecosystem Management Project



- Sub-subsection Line
- Broad moraine ridges or till plain; many lakes
- Broad moraine ridges, till plain, or upland drumlin field; few lakes
- Broad, flat outwash plain; few lakes or wetlands
- Broad, flat outwash plain; very poorly drained peat or muck
- Deltaic deposit
- Drumlin field; primarily wetland surrounding small drumlins
- Drumlin field; roughly 1/2 upland, 1/2 wetland
- Dune and swale complex; very poorly drained peat or muck
- Dune and swale or transverse dunes in embayment
- Flat lake plain; loam, silt loam, clay loam, or clay
- Flat lake plain; sand, loamy sand, or sandy loam
- Flat lake plain; very poorly drained peat or muck
- Flat moraine or till plain
- Ice-contact ridges; few kettle lakes
- Ice-contact ridges; many kettle lakes
- Lake
- Large, open dunes
- Limestone or dolomite
- Moraine ridges; few kettle lakes
- Moraine ridges; many kettle lakes
- Narrow outwash channel
- Narrow outwash channel; very poorly drained peat or muck
- Pitted outwash plain
- Pitted outwash plain; very poorly drained peat or muck