

THE MANCHESTER ENTERPRISE

Boldly Going Where No Newspaper Has Gone Before



130th Year -- No. 8

Manchester, Michigan

40c per copy

KLAGER PORTABLE CLASSROOMS TO BE RELOCATED TO HIGH SCHOOL

The Manchester Board of Education took action in a special board meeting December 4 to authorize moving the now unneeded Klager portable classroom to the high school.

The four portables will be vacated later this month with the opening of new Klager facilities after the Christmas holidays.

The board of education accepted the recommendation of the facilities committee and authorized the school administration to place the four portables on the south side of the school in the most attractive manner possible.

Moving will take place in the spring or after school dismisses for the summer to minimize safety risks for both students and workers, and to minimize potential damage to the classroom, the streets and to the school grounds.

'High visibility' placement of the portables in front of the high school because an item of debate at the November board meeting with some community members indicating the best method to 'stick it to people opposing a new high school' would be to make our current facilities look as ugly as possible.

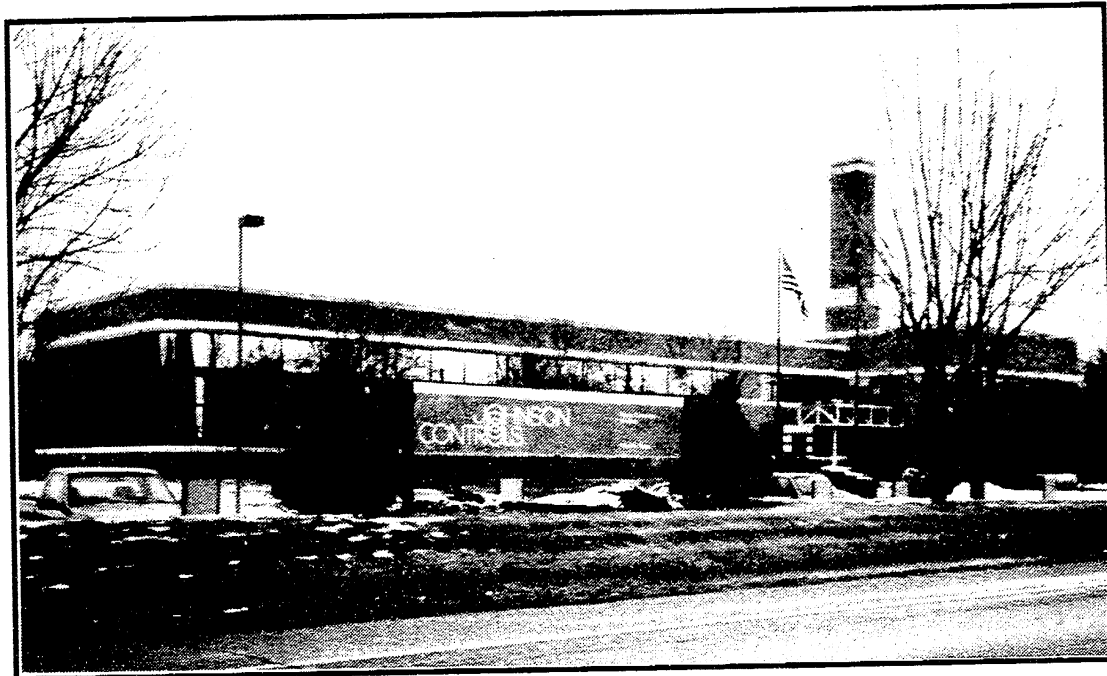
That brought immediate reaction from others who indicated such an amateurish approach would be the best way to kill any hopes of ever improving facilities. The matter was then tabled last month and the facilities committee restudied and brought revised costs to the recent December 4 meeting.

Those figures, reported by Facilities Committee Chairman Wayne Winzencz indicated that placement of the portables behind the school would cost about \$25,000 vs. \$14,000 to place them in front of the high school. The board opted for the cheaper option, in front of the school.

At the same time however, the board instructed Superintendent Ron Niedzwiecki to landscape the area around the portables to keep our facilities looking as attractive as possible, thus stemming the desires of those wanting 'uglyed-up buildings.

The board then went into closed session to discuss the teacher bargaining agreement and adjourned without further public business discussed.

Johnson Controls Sells Local Plastics Container Division



Two local landmarks will have new signs out front after the first of the year if the pending sale of Johnson Controls' Plastics Container Division is approved by U.S. and European regulatory authorities.

A joint statement by Johnson Controls and Schmalbach-Lubeca AG, a German firm, indicates that they have signed a definitive agreement under which Schmalbach-Lubeca will purchase the Plastics Container Division (PCD) of Johnson

Controls.

PCD manufactures PET (polyethylene terephthalate) beverage and food bottles in 27 locations in North America, Europe, and South America; including Manchester. This sale involves the "old Ford plant" building on City Road as well as the new Research and Development building on M-52 south of town. It does not affect the Plastics Machinery Division which employs the larger number of people.

A JCI spokesperson in the Plastics Machinery Division confirmed that not only has the company called back all their previously laid-off workers, but they have hired 15 additional employees recently and are wondering "how we'll get all

the work done." The spectre of hundreds of laid off workers again in Manchester is not a reality at this point.

A spokesperson for the Plastics Container Division indicated that the changes will be primarily "a new sign out front," and that internal differences will probably only be in management style. "I don't envision a loss of employees or any changes in the near term," said Shelley Steele. "There may be some people who move from one building to another as the changes take place, but in the long run this will probably be a good move for all of us."

Steele went on to explain that Schmalbach-Lubeca is a

continued on page 19

The Spirit of Giving - Alive and Well At Christmas



The Gingerbread Tree at Great Lakes Bancorp is a success once again this year. 87 kids from 34 families received a special gift this Christmas. Kathy Roberts of Great Lakes chaired this effort for the second year. This is the fourth year for the Gingerbread Tree.

Inside This Issue

| | |
|--------------------------------|---------------|
| Community Calendar..... | Page 2 |
| Picking Up Wrestling Mats..... | Page 3 |
| Editorial/Opinion..... | Page 4 |
| Local Government..... | Page 5 |
| Around Town..... | Page 6 |
| Church Page..... | Page 8 |
| Senior Citizens..... | Page 9 |
| Snow Days!..... | Pages 10 & 11 |
| School..... | Page 12 |
| People..... | Page 14 |
| Organizations..... | Page 16 |
| Announcements..... | Page 17 |
| Classifieds..... | Page 18 |

Please deliver this copy of THE MANCHESTER ENTERPRISE to -

Manchester Library
P.O. Box 135
Manchester MI

48158

Community Calendar

Scheduled Meetings

Bridgewater Twp.
 Carol Peacock, Supervisor
 517/456-7303
 Karen Weidmayer, Clerk
 13360 E. Austin
 428-8641
 Planning Commission
 2d Monday 7:30
 Township Board meeting
 3d Wednesday, 7:30

Freedom Township
 Town Hall 428-7545
 11508 Pleasant Lk. Rd.
 Robert Little, Supervisor
 Julie Schaible, Clerk
 13785 Pleasant Lk.
 428-7241
 Township meeting
 2d Tuesday 8:00
 Planning Commission
 meets on First Tuesday
 of all even numbered months

Manchester Township
 Town Hall 428-7090
 Ron Mann Supervisor
 275 S. Macomb
 Kathleen Hakes, Clerk
 Township meeting
 2d Monday 8:00
 Planning Commission
 4th Tuesday

FIRE DEPARTMENT
 428-9439 non-emergency

Sharon Township
 Supervisor Gary Blades
 5340 Hazel Rd., Grass Lake
 428-9518
 Teri Aiuto, clerk
 428-7002,
 17250 Bethel Church Road
 Township Meeting
 1st Thursday 8:00
 Planning Commission
 2d or 3d Thursday

Manchester Board of Education
 Paul Kluwe, President
 Meetings
 3d Monday 7:30
 M.H.S. Media Center
 Superintendent - Ron
 Niedzwiecki 428-9711
Village of Manchester
 Larry Becktel, President
 Jeff Wallace, Manager
 428-7877
 Village Council Meets
 1st & 3d Monday, 7:00
 Planning Commission
 2d Tuesday after the first
 Monday, 7:00 PM

COMMUNITY EVENTS

Monday

1st Monday: Manchester Township Library Board meets 7:30 pm.
 1st Monday: Manchester Masonic Lodge, business meeting 7:30
 1st & 3d Monday: **Manchester Village Council, 7:00**
 2d Monday: Bridgewater Township Planning Commission meets 7:30
 2d Monday: Manchester Knights of Columbus meets 8:00 PM. Ed Barnard, Grand Knight
 2d Monday: Manchester Township Board meets 8:00
 2d & 4th Mondays: Manchester Optimist Club
 3d Monday: **School Board meets MHS Media Center 7:30**
 3d Monday: **United Way Board Meetings, 7:30 at First of America Bank**

Tuesday

2d Tuesday: Freedom Township board meets 8:00
 2d Tuesday after 1st Monday: Village Planning

Commission
 2d Tuesday: Manchester Area Senior Citizens, 9:30 am
 2d Tuesday: 20th Century Club, 7:30 pm.
 2d & 4th Tuesdays: Shakespeare Club, 2:00 & 4:00
 3d Tuesday: **Manchester Historical Society, 7:30 at Blacksmith Shop**
 4th Tuesday: La Leche League 10:00 am call 428-8831 for location and info.
 4th Tuesday: Klager PTO 6:30 PM at the school. Call 428-8321 for info.
 4th Tuesday: Manchester Township Planning Commission

Every Tuesday: Boot Stompers meet at American Legion 7-9 PM
Every Tuesday At Your Home: RECYCLE - put containers at curb by 7:30 AM

Wednesday

1st Wednesday: Raisin Valley Land Trust, at the Blacksmith Shop, 7:30 PM
 1st Wednesday: Veterans of Foreign Wars, 7:30 pm

2d Wednesday: **American Legion Auxiliary 7:30 PM**

2d Wednesday: **Manchester Recreation Task Force, 7:30 at Blacksmith Shop**

3d Wednesday: Manchester Men's Club 7:30 PM

3d Wednesday, WIC Program, 9:30-3:00 Senior Citizens Bldg.

3d Wednesday: Bridgewater Township Board, 7:30 PM

4th Wednesday: Manchester Township Fire Department meeting, 7:30 PM

Every Wednesday: Community Band - 7:30 PM

Thursday

1st Thursday: Sharon Township Board meets 8:00

1st Thursday: American Legion Post #117, meets 7:30

2d or 3d Thursday: Sharon Township Planning Commission

3d Thursday: Cub Scout Pack Meeting, 7:00 pm

4th Thursday: Community Resource Center Board, 7:30

Every Thursday: AWANA 6:30-8:30 for kids ages 4-6th grade at Community Bible Church

Friday

Every Friday: AA meetings 7:00 PM At Emanuel Church Kitchen. All are welcome; for more information call Church office 428-8359

Notices

1st & 3d Saturdays: Manchester Kiwanis meets. Call 428-7722 for information on meeting place and time.

Coming Events

Wednesday, December 11: Manchester Family Services Christmas Shop

Saturday, December 14: 8-11 p.m. "Can't Wait for Christmas" TEEN DANCE! St. Mary Parish Center. Sponsored By St. Mary Youth Group.

Sunday, December 15: Santa Claus Comes to Manchester - watch for details

Wednesday, December 18: Foodgatherers at St. Mary Parish Center

HOME FOR THE HOLIDAYS 1996

The Lucile B. Conger Alumnae Group of the University of Michigan invites you to tour four of Ann Arbor's loveliest homes decorated for the holiday season. All proceeds go to women's scholarships at the University of Michigan. Over \$13,000 was raised in 1995. The tour will be held Thursday, December 12, 1996, 10 AM to 3 PM and 5 PM to 8 PM.

Tickets are \$15 and may be ordered (with map and ticket program mailed to you) from Lucile B. Conger Alumnae Group, PO. Box 2334, Ann Arbor, MI 48106-2334.

Dial-a-Garden 971-1129



Dial-A-Garden, a service of the Washtenaw County/Michigan State University Extension Service, is a system of pre-recorded garden-

ing messages. The feature has a format which lets callers with a touch-tone phone select which message they wish to hear. The messages are changed monthly. To contact Dial-A-Garden, call 971-1129. Enter one of the 3 digit codes listed below. Persons with a rotary phone should call 971-0079 and hold on the line for the operator.

December 1996

- 101 Buying a new houseplant
- 102 Growing cyclamen
- 103 Freesia
- 104 Caring for holiday plants
- 105 Why won't houseplants flower?
- 201 Pest control for houseplants
- 202 De-icing sidewalks
- 203 Live Christmas tree
- 204 Choosing a Christmas tree
- 205 Keep your Christmas tree fresh
- 301 Winter protection of trees and shrubs
- 302 African violets
- 303 Salt injuries on plants
- 304 Snow mold
- 305 Making a grape vine wreath
- 401 Recycle your Christmas tree
- 402 Indoor light gardening
- 403 Using wood ash
- 404 The MSU soil test
- 405 Plant and insect diagnostic service

A Perfect Gift for the GOLFER You Know! Send them to Augusta!

April 9, 1997

They'll spend the day with the "Masters". Package includes: Round trip air on American Trans Air., transfers from airport to course, admission badge for practice rounds (both regular and par 3).

These will go fast! Limited availability!!

Detroit to Augusta, 8:00 - 9:35 am
 Augusta to Detroit, 6:00 - 7:45 pm

Price: \$380 per person

Full payment due at time of booking, MasterCard Visa accepted and is non-refundable.

UNIGLOBE Travel

Chelsea Travel, Inc.

1070 South Main Street • Chelsea, MI 48118
 (313)475-3110 (800) 875-3113



Hours: Mon-Fri 5-8 pm Sat 9-4, Sun. 12-6 **Now Open**

Support The Men's Club

Located on Adrian St. in Tirb's Chevrolet lot

Trees \$20 - \$25

Christmas Tree Sale

100% of proceeds go back into the community

Teen Dance this Saturday!

Attention all Manchester area teens: Party down on Saturday, December 14th at St. Mary Parish Center, from 8-11 PM! It's the St. Mary Youth Group's "Can't Wait for Christmas" Dance!!!

There will be D.J. music (presented by S.M.S.), lights, refreshments, and cool people—if YOU come!

Bring friends. Be ready to dance!

Admission is \$3—or—\$2 with two cans of food for the needy at Christmas time!

Can't wait for Christmas? Come to the Dance this Saturday!

The Manchester Enterprise is published each Thursday at 109 East Main St., Manchester, MI 48158, with second class postage paid at the Manchester Post Office.

POSTMASTER: Send Form 3972 to: Manchester Enterprise, P.O. Box 37, Manchester, MI 48158.

The Manchester Enterprise, Inc. (313) 428-8173

Editor & Publisher Teresa M. Benedict

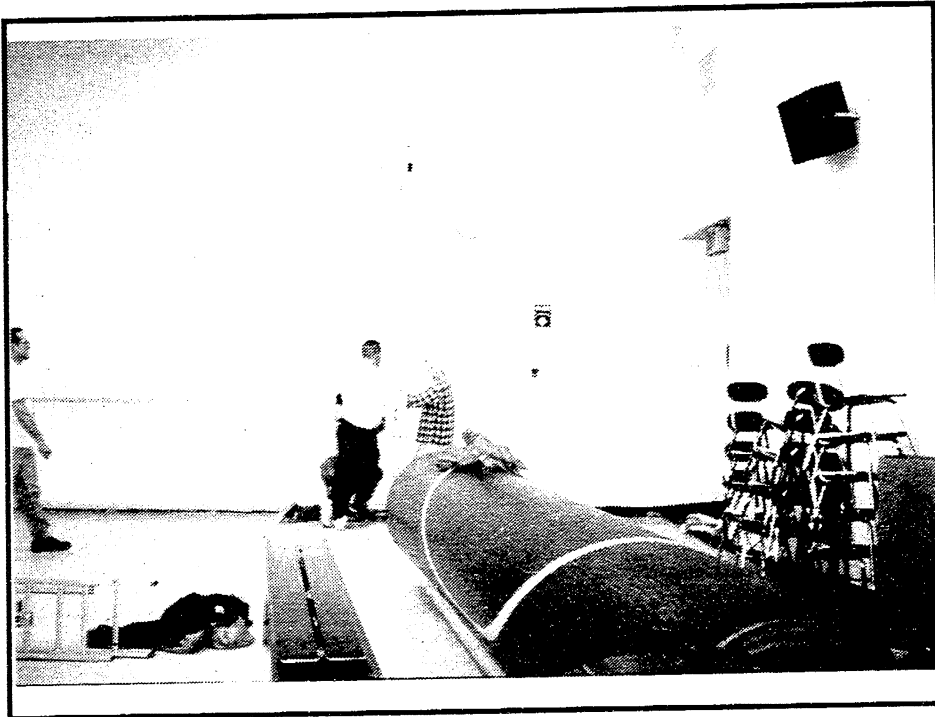
Production Manager Marsha Johnson Chartrand
 Lois Hochstetler, staff writer
 Julie Schaible, accounting
 Andy Supers, graphic artist

One-year subscriptions are \$18 within Washtenaw County, \$20 outside the county. Deadline for display ads, photos, classifieds and news articles is Friday at 5:00 p.m. The Manchester Enterprise. No part of this publication may be used without the written permission of the publisher.
 © 1996 The Manchester Enterprise

The Second Front Page

MHS' New Addition

Volunteers Do It Again



In Manchester we are fortunate to have so many people who are willing to volunteer their time for a good cause. Once again we have an example of that spirit on a large scale at our schools.

Several months ago Donald DuRussel found out that the wrestling mats in the multipurpose room at the high school were in need of protection. During the school day and off season, the mats were simply rolled up and pushed against the wall in the same room where the students eat, hold dances, and attend programs. During those uses of the room, the mats were often used as seating, were subject to damage, and frequently had food or beverages spilled on them.

Having dirty and damaged mats is hardly a credit to our school when other districts bring their teams here for competitive meets.

But, because no one knew quite what to do, or no one had the time or the ability to do anything about it, the situation stayed the same for many years...until Don heard about it and decided to do something.

What was his impetus to *just do it*? "The cheerleaders needed new uniforms - so it was sort of a trade-off," he admits lightly. Don's daughter, Heather, is a member of this year's state championship cheerleading team. "And I was a wrestler in high school myself, although I wasn't very good." According to Don, the

cheerleaders also use the mats during their practices, so he had some vested interest in making sure they are kept in good condition.

Don's solution was to design and build a machine that picks up the mats off the floor. Although he

long, four feet wide, and twelve feet high. It is enclosed and has a key lock-out system so that the mats can't be tampered with by someone who shouldn't be using them. While it currently holds three mats, it is designed to be able to hold a total of six mats, and can be moved to a different location if needed as the school grows. The painted plywood cover will be finished by painting wrestlers' individual records on the outside to reward those athletes, both past and present, who have distinguished themselves in their sport.

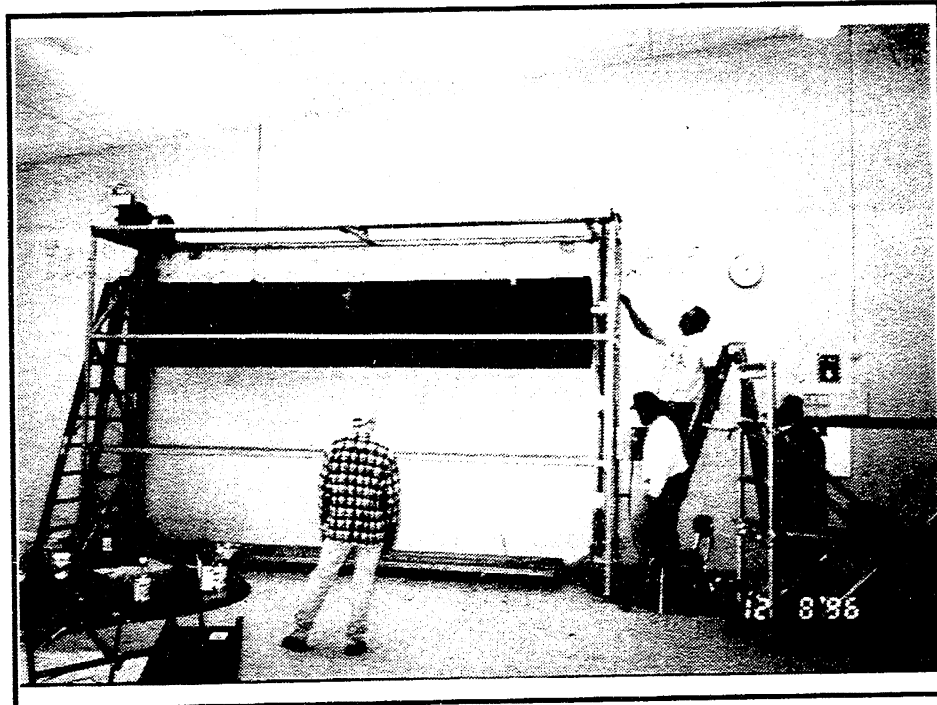
tween setting up the machine, placing the mats, and constructing the cover, the crew was there into the evening. This was the culmination of six weeks of after-work and weekend effort by Don and his small crew of helpers.

The Athletic Boosters fronted the money for the project, but the donations of many local businesses and the work of one man is what has made it a reality. Don estimates its value to the school district as at least \$15,000.

Although the wrestlers and cheerleaders will be the primary beneficiaries of Don's undertaking, this is another part of our school in which the community can now take pride.

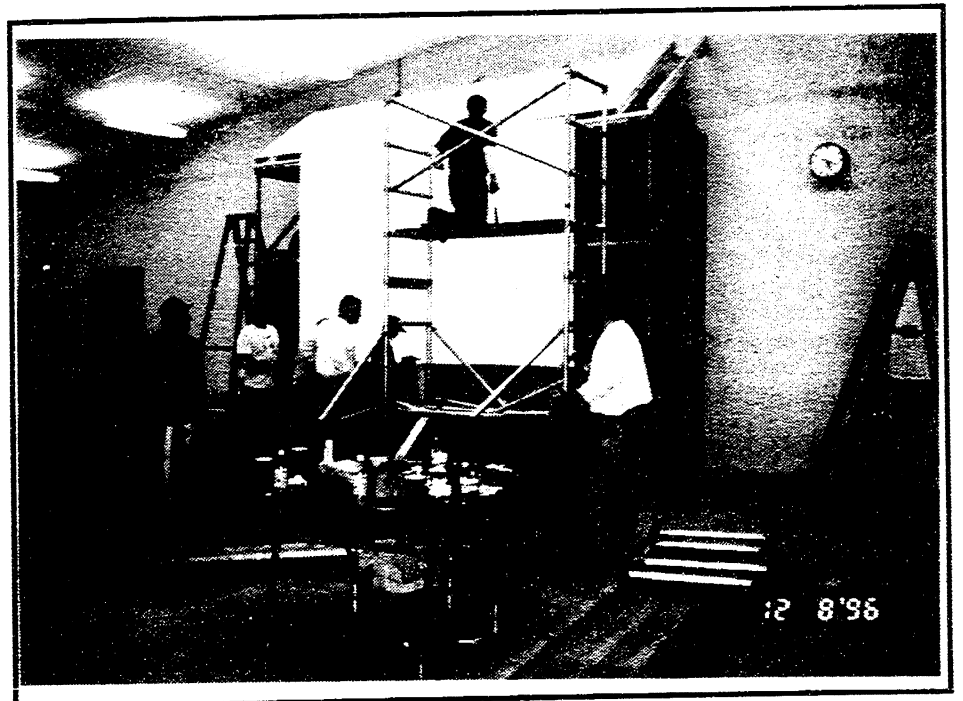
A huge thank-you to Donald DuRussel and his team of assistants... Pat DuRussel, Damian DuRussel, Charles DuRussel,

Dave Roberts, Joel Tobias,



had the support of a lot of companies, especially his own employer, Manchester Tool & Die, the work he did was on his own and he spent a lot of his "non-existent spare time" over the past six months working on this concept. "I had help from several others in building the machine but I did the design work myself," he commented.

The machine is 17 feet



The machine was set in place on Sunday morning and the assembly process took much of the day. Be-

and Steve Vlcek. You have made a difference in a big way.

-Marsha Johnson Chartrand

Food Gatherers

sponsored by
Manchester Family Services for
Manchester area families

Wednesday, December 18

Noon-3 PM
St. Mary Parish Hall
Madison Street

Editorial / Opinion Page

Out & About



To the Editor:
This is to thank the kind gentleman who stopped to help me on the eve of December 5th.

I was trying to get onto Stonefield off of Schleweis Road and not having any luck.

The gentleman stopped to see if I was picking up children because a bus was stuck in the snow a little farther down the road. He drove me to where the bus was.

My grandchildren had been picked up by the baby-sitter. He then took me to the house where the children were. He waited for me to get them dressed and then took us back to my vehicle. He also allowed my grandson to throw snowballs at him.

How nice to know there are strangers who will go out of their way to help others.

My sincere thanks to the gentleman for his help.
Lois L. Kothe

situation, the mentor's advice is heeded, and the personal crisis is avoided. Your inability to regroup in a support system indicates a dysfunctional relationship. If my child disobeys me and falls off the forbidden bicycle, I discuss what has been learned and set new goals. Support systems not only help avoid personal catastrophe, they assist us during such times. Your experience indicates the lack of a viable support system.

2) Your writing indicates that all humans have a basic need to test the limits of society. I disagree. Some individuals have the maturity to believe that a fire is an unhealthy setting without entering the blazing building. One purpose of a support system is to help individuals survive sufficiently long in order to make mature personal decisions. Falling is inevitable. It is a personal choice whether we choose to turn to others for advice and support, or smugly assume that one has all the answers as one approaches the edge of the cliff at a high rate of speed.

- Bob Smith

gar is on the road Out & About; visiting some friends in Kelsey, California - Spanish flat area 50 miles east of Sacramento. It truly is a small world. Picked up a local book titled, "Hidden in the Chaparral," by Phyllis L. Gernes. In her book she relates a story of two Michigan men, that Don Irwin might relate to.

"Rubin Demuth was born in Pennsylvania and moved to Michigan as a small child. There he learned the miller's trade. He came to California in 1852 because of the Gold excitement. He expected to stay two years, to 'make his pile,' then go back home. But, he never made enough to get back home. His brother-in-law made nine or ten thousand dollars in two years on the middle fork of the American River, and went back to Michigan to buy a farm."

My friends' house sits on the side of a high ridge, facing west; and at night the lights of

Sacramento are visible. Gold excitement is still here with many old mines reopened.

Maybe gar can 'make his pile,' and buy a Michigan farm on a stopover in Las Vegas.

Pink's Opinion

The prolonged boredom of growing up in Manchester has led students to curiosity and experimenting. Unfortunately, curiosity killed the cat. People call the police because juveniles are gathering on Main street. What is the hold up in the community, why hasn't a rec center been built? Even a pool hall with some tables would be something to do.

You are not going to fix the problem of kids using drugs unless there is a way for them to release that energy in a positive way. Yes, you do have to spend money but I think our town can handle it. A lot of money has been spent on the parks, but how many high school students play on the swings, only the ones on drugs.

What is our town going to do when Klager is finished and all those new rooms are filled with kids? When they finally ride their bikes on all the trails in town and become bored with life in Manchester, what then? They will start to take a look at drugs, just like so many kids before. You have to make the drug free life look appealing.

note to readers: Every week I submit a column. In these columns I try to state my opinion as best I can. The catch is that my opinion is not really the most popular one. I try to point out the problems I experience growing up in Manchester. If you have a topic you want brought up, write it down and drop it off at the Enterprise.

RESPONSE TO PINK

Your column is well written, but makes sweeping assumptions:

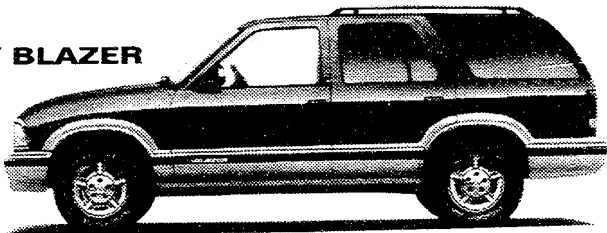
1) Your actions, you write, caused you to fall over the edge. A working personal support system is founded upon love, respect, and trust. In a perfect

4 WAYS TO MAKE YOUR MONEY COUNT

CHEVY LUMINA, CAVALIER, S-SERIES, BLAZER

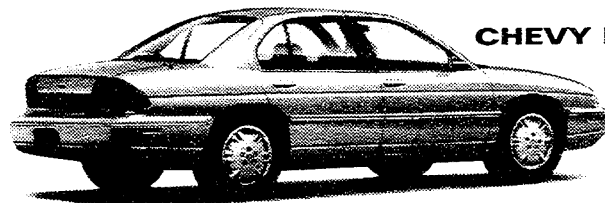
ONLY **\$289*****
PER MONTH FOR 24 MONTHS

CHEVY BLAZER



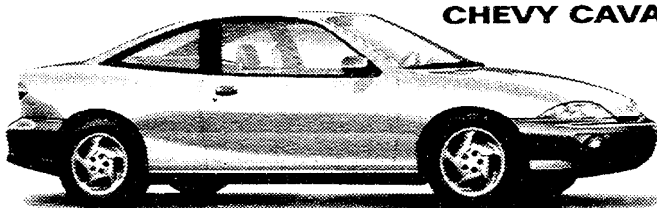
3.9%*
APR FINANCING

CHEVY LUMINA



3.9%*
APR FINANCING

CHEVY CAVALIER



UP TO **\$1,200****
CASH BACK

CHEVY S-SERIES



LEADING THE WAY



ANN ARBOR
Rampy
Chevrolet/GEO
3515 Jackson Rd.
(313) 663-3321

BRIGHTON/ HOWELL
Champion
Chevrolet/GEO
5000 E. Grand River
(517) 545-8800

CHELSEA
Faist-Morrow
Chevrolet/GEO
1500 S. Main St.
(313) 475-8663

CLINTON
Underwood
Chevrolet/GEO
1070 W. U.S. 12
(517) 456-4181

DEXTER
Frank Grohs
Chevrolet/GEO
7120 Dexter-Ann Arbor Rd.
(313) 426-4677

MANCHESTER
Tirb
Chevrolet/GEO
131 Adrian St.
(313) 428-8212

SALINE
Bill Crispin
Chevrolet/GEO
7112 E. Michigan Ave.
(313) 429-9481

YPSILANTI
University
Chevrolet/GEO
1180 E. Michigan Ave.
(313) 481-0210

You must take retail delivery out of dealer stock by 1/13/97. *Length of financing may affect finance rate. GMAC financing. See your participating dealer for qualification details. **\$500-\$1200 Cash Back depending on model. S-10 offer includes 1996 and 1997 models. Cash Back may not be combined with SmartLease or SmartBuy programs. ***Based on \$26,746 MSRP with destination charge. Includes option package 1SC, AV5 bucket seats, and option package discount. Tax, license, title fees, insurance and optional equipment extra. First month's lease payment of \$288.80, \$2,110 down payment and \$325 refundable security deposit for a total of \$2,723.80 due at lease signing. Mileage charge of .15 per mile over 30,000 miles. GMAC must approve lease. Monthly payments total \$6,931.20. Option to purchase at lease end at a price determined at lease signing. Lessee pays for excessive wear and use. Must take delivery out of dealer stock by January 13, 1997. See dealer for qualification details.

SEE YOUR GREAT 8 CHEVY/GEO DEALER TODAY!

AGENDA MANCHESTER VILLAGE COUNCIL

Monday, December 16, 1996

7:00 p.m.

1. Call meeting to order
2. Pledge of Allegiance to the Flag
3. Minutes of the previous meeting
4. Approval of Agenda
5. Correspondence
6. Public Participation
7. Council Committee Reports
8. Old Business
 - a. Layne Northern -Update of Water Filters
 - b. Other
9. New Business
 - a. Sheriff Contract for 1997
 - b. Other
10. Adjourn

FREEDOM TOWNSHIP PROPOSED SYNOPSIS

November 12, 1996

The meeting was called to order with all Board members present. Minutes and Treasurer's report were approved. Various communications requiring no Board action were accepted.

The Planning Commission reported continued meetings concerning the Hochstetler conditional use permit application, a proposed broadcast communication tower, and an acreage division ordinance. The Zoning Board of Appeals reported granting a variance for construction of a pole barn on a vacant lot. Also received was the report from the Ordinance Enforcement Officer and Zoning Inspector.

Under New Business, the Board discussed new hardware and software for the assessing and tax collecting, approved the Chelsea fire contract, and discussed new members for appointed boards and commissions.

Walter and Virginia Hieber were recognized for their years of service to the people of Freedom Township with a plaque and floral arrangement. Walter is the retiring board treasurer of 39 years, and Virginia, although not retiring, has been his deputy.

Bills #4634 through 4668 were approved for payment. Meeting adjourned at 9:35 PM.

Julie Schaible, Clerk

Approved by Bob Little, Supervisor

Village Traffic Enforcement

On November 27, 1996 from 3PM to 7PM Deputy Garcia along with Deputy David Egeler, from the Sheriff's Department Traffic Services section, conducted selective traffic enforcement in the Village of Manchester.

A total of five moving violations were issued during the four hour detail. Three speeding violations were issued at Main St. and Elton, another speeding violation was issued on Macomb St. The last violation was for disobeying a stop sign on Torrey and Duncan.

We plan to use this selective enforcement method in the future. If you have a specific traffic problem in the village which you feel needs addressed please call me (Sgt. Gerald Haensler) or Deputy Garcia at the station.

SHARON TOWNSHIP PLANNING COMMISSION

Public Hearing and Meeting

On Thursday, December 19, 1996, at 8:00 pm EST, at the Sharon Township Hall, 18010 Pleasant Lake Road, the Sharon Township Planning Commission will hold a Public Hearing to receive comments on the following proposals:

1. An application by Michael and Danielle McLennan of 10710 M-52, Manchester, to re-zone 14.84 acres at that address, Property ID 15-35-400-027, in the SE 1/4 of Sec. 35, from R-2, low-density residential, to A-1, agricultural.
2. Major overhaul of Zoning Ordinance Article 22, Site Plan Review.

Written comments may be sent to Roger Kappler, Chairman, Sharon Township Planning Commission, 19163 Bethel Church Road, Manchester, Michigan 48158, and must be received before Dec. 18, 1996.

The Sharon Township Zoning Ordinance, and the proposed amendment(s) and application(s), may be reviewed, and the Ordinance purchased, by appointment, through Teri Aiuto, Sharon Township Clerk. Call 428-7002.

The regular meeting of the Commission will commence immediately following the Public Hearing.

Sharon Township Planning Commission

Roger Kappler, Chairman

Nancy's Herb Pantry

Manchester Mill
Manchester, Mi

- Herbs and Vitamins
- Kinesiology consultant.



Wed - Fri 12 - 5,
Sat 10 - 4

(313) 428-7621

MANN REAL ESTATE

122 W. Main St.

Office 428-8388

Your Home Town Real Estate Firm for over 20 years. Offering you multi-list service with a personal touch. Thinking of selling or buying a home or building site - Call Us Today!



Jim Mann
428-8074



Terry Walter
428-7023

FREEDOM TOWNSHIP PLANNING COMMISSION MEETING

On Friday, December 20, 1996, at 7:30 PM., at the Freedom Township Hall, 11508 Pleasant Lake Road, the Freedom Township Planning Commission will hold a special meeting for final consideration of the application for conditional use submitted by John Hochstetler for a skeet range and pheasant hunting preserve.

The full application and other submittals may be obtained from the secretary, Bob Miller, 10955 Hieber Road. Any person interested is invited to the meeting or written comments may be sent to Stanley Tschiltz, chairman, 3401 Haab Road, Ann Arbor, MI, 48103.

Bob Miller, secretary

Sula Darlene Jeffers

ATTORNEY AT LAW
150 E. Main Street
P.O. Box 625
MANCHESTER, MI 48158

(313)-428-8190

Bruce A. Bates D.D.S.

500 Galloway Drive, Manchester, Michigan

(313) 428-8277

Complete Family Dentistry

• Adults & Children Always Welcome as New Patients.

We Accept Dental Insurance

VISA • MasterCard • Discover

Healthcare Creditline Dental

Gentle Dental Care

Relaxing Gas Available Upon Request

We've moved "Up Town"

to 227 E. Main Street

(formerly Manchester Eye Care Ctr.)

Jim Watson

• Total Dental Care
for the Entire Family •

most insurances accepted

Call 428-9019 • 227 E. Main St.

**Early Morning, Late Evening &
Saturday Appointments available**

Locally Owned and Operated

Modern Waste Systems, Inc.

7255 S. Brooklyn Rd.

P.O. Box 275 Napoleon, MI

(517) 536-4900



COUPON COUPON COUPON

One Month **FREE** with this coupon

For All New Customers

Seasonal Excluded

(maximum savings of \$20)

Around Town

The Marines Come to Manchester

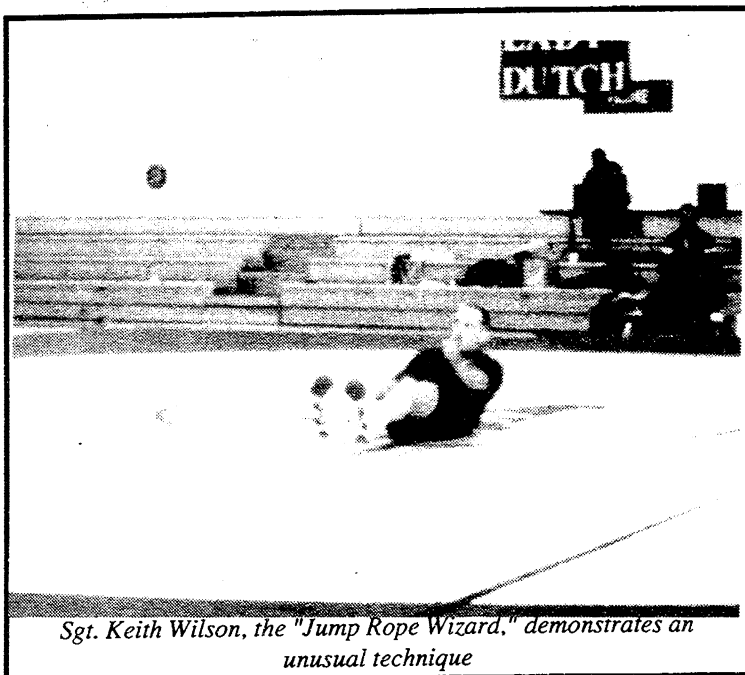
The Marine Corps' elite All-Marine Wrestling team sent a four-man detachment to perform at Manchester High School last week. The purpose of their tour was two-fold - both a recruitment effort and a prevention message was presented to the all-school assembly on Thursday morning.

The four young men who demonstrated Greco-Roman, freestyle, and collegiate wrestling created an enthusiastic response from the students. When entering the building a few minutes after the program began, the roar of the crowd was the first thing you could hear.

Entering the gym, the reason for all the yelling was clear. There were two Marines performing the "Slinky" which involved flipping each other, end over end, across the mats. They then tried to get a few of our high school wrestlers to do the slinky... with varied efforts. Jeremiah Tobias and Tyler Breilein, both Freshmen, were able to master the technique. Other wrestlers just couldn't manage to pull it together.

Three junior girls were taught how to flip a wrestler onto his back in the Greco-Roman style (which involves primarily upper body motion). Mr. Mark Ball, also managed to throw one of the Marines to the floor.

Most impressive was the "one-of-a-kind" rope jumping technique demonstrated by Sgt.

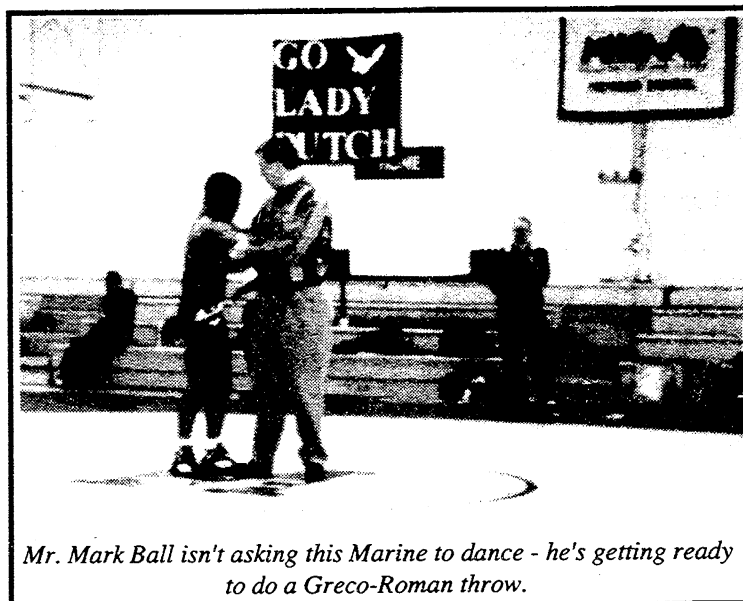


Sgt. Keith Wilson, the "Jump Rope Wizard," demonstrates an unusual technique

Keith Wilson, the "Jump Rope Wizard." Sgt. Wilson actually uses the jump rope as a training tool, but he has taken the sport to an art. He got high school students to come out and jump with him and out-jumped them all. Then he proceeded to demonstrate some incredible techniques. He jumped rope standing up, sitting down, and lying down. The rope was twirling so fast it was hard to see. He then switched to a lighted jump rope in a totally darkened gym. At that point, the jump rope, and his lighted shoes, were all you could see. This was a really impressive performance.

Each one of the Marines gave a brief self-introduction and explained what the Marines have done for them. It was motivational to hear about the opportunities that military life offered these young men. Sgt. Wilson also discussed the benefits of a drug-free life-style as part of his presentation.

Leaving the gym, one of the students was heard to say, "I thought this would be boring; but it was really pretty cool." You can't ask for a much better recommendation than that. -MJC



Mr. Mark Ball isn't asking this Marine to dance - he's getting ready to do a Greco-Roman throw.



Dana McCalla throws a Marine to the mat with amazing ease!

Professional
Dog Grooming
 All Breeds



Carol Bender
 25 years experience
 (313) 428-1627

Your home or mine

Sutton Insurance Agency, Inc.
 136 E. Main St., Manchester, MI 48158

Manchester's Independent Agency

**AUTO • HOME • FARM • LIFE
 HEALTH • DISABILITY**

"We Take Pride In Our High Level Of Quality Service"
 M-T-W-F 9 - 4:30, Th 9 - noon Appointments Also to Fit Your Schedule
Specializing in HOMEOWNERS INSURANCE

428-9737

Manchester Area Historical Society



1997 Calendars are now available!
 The Historical Society would like to thank the local businesses who carry our calendars:

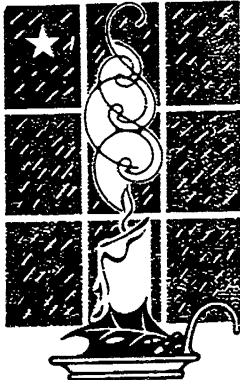
- Manchester Village Hall
- Flower Garden
- Manchester Pharmacy
- Manchester Enterprise
- The 18th Century Shoppe
- Comerica Bank
- Carol's Cut & Curl
- Sharon Mills Winery
- Manchester Antique Mall
- Marti's Salon
- Fredonia Groceries
- Chapter & Verses
- Sharon House Bed & Breakfast
- Woodbrook Computers
- Wacker's
- First of America Bank
- Kleinschmidt True Value
- Manchester Township Library
- Pyramid Office Supply
- Manchester Chronicle
- CRC

Envelope Included - Makes Ideal Christmas Gift or Card for only \$5.00

1996 Christmas Eve Luminaria
 sponsored by the Manchester Area Historical Society

Get your supplies at the
Blacksmith Shop on East Main St.

**Saturday, December 21st
 Sunday, December 22nd
 Monday, December 23rd
 3 PM to 8 PM**



Sand, Candles, Bags and Instructions all included for \$5.00 and up per household
 For additional information, call all Forest Walz 428-8234

1997 Manchester Area Historical Society Calendars will be available for purchase at the Blacksmith Shop during these same hours. They make a Great Christmas Gift at only \$5.00

Around Town

The Beat

by Deputy Carlos J. Garcia
Community Officer, Village of Manchester

Lately we have received an increasing number of calls to address the sidewalk traffic on Main Street. The nature of most of these calls are very similar - kids and bicycles on the sidewalk. In an effort to curtail the growing problem, we are asking everyone to get involved.

If you have been on Main Street, just after school hours, you would have noticed groups of teenagers wandering about. It has been brought to my attention, that these individuals have been the cause of several complaints from local businesses and individuals who have been disturbed by the group.

No one should have to walk in the street to go around them. No one should have to conduct business in their establishment while there is horseplay going on in front of their business. No one should have to worry about becoming involved in an accident if someone runs onto the street. No one should have to be careful for fear of being struck by a bicycle or someone on rollerblades as they are exiting a store. Unfortunately, this is what is happen-

ing and it is getting to be a problem.

The local ordinances governing sidewalk traffic is very specific. A regulated area was established by the Village Council which prohibits the use of any vehicle in this area which produces speeds greater than an average walk. There are exceptions, but in general anything (including remote controlled cars) cannot be operated on the sidewalk in the downtown area if it can produce a speed greater than a walk. The ordinance prohibits bicycles, rollerblades, skateboards, and any other "vehicle" from being operated on the sidewalk, but you may walk them.

The boundaries of the regulated area are: Clinton from Madison to Main St.; Main St. from Clinton to M-52; and Adrian from Duncan to Main St. The fines associated with a violation of the ordinance is five dollars for the first offense, twenty-five dollars for the second offense, and one hundred dollars for the third offense and each offense thereafter. We also

impound the vehicle until the fines are paid. Should the offender happen to be a minor, the responsible adult will be held accountable for the payment of fines.

The disorderly conduct ordinance prohibits engaging in any disturbance, fight or quarrel in a public place; loitering on any street or sidewalk ... or conduct themselves in any public place so as to obstruct the free and uninterrupted passage of the public ... or otherwise obstruct traffic on any street or sidewalk by collecting in groups thereon, for any purpose. It is an arrestable offense to behave in violation of this ordinance.

We ask your assistance in this matter. If you see a disorderly group, please call 911 and report them. We will be keeping a watchful eye on Main St. in an attempt to rectify this problem. This will include both a uniformed presence as well as surveillance techniques. Warnings have been ignored. The time has come for stricter enforcement measures.

Police Beat

Reports from Washtenaw County Sheriff Department
Station 4, Village of Manchester

Tuesday, December 3:
8:38 AM Traffic Violation Main & M52 - vehicle blocking intersection

4:20 PM Hit & Run Crash on West Main

Wednesday, December 4:
2:06 PM Personal Assistance on Hibbard St

2:25 PM Ordinance Violation - Blight vehicle on Riverside

Thursday, December 5:
12:40 AM - Drive off at Hop in
7:21 PM Drive off at Hop In
10:03 PM Burglary on East Main

Friday, December 6: 5:01 AM Traffic violation at Duncan & Hibbard

11:28 AM Car vs. deer at Gieske and Hibbard

11:49 AM Personal Protection on Union St.

3:58 PM Traffic Crash on Main Street

Saturday, December 7:
2:08 AM OUIL/UID - Main & Hibbard

8:02 AM Animal problem on Wolverine St

9:06 PM Juvenile MDOP Main Street

11:59 PM Teens gathering in parking lot Main Street

Sunday, December 8: 2:25 AM Disorderly intoxicated males at Gazebo

5:02 AM OUIL/UID Duncan & Hibbard

6:49 PM Traffic crash - Car

vs. utility pole on Riverside Drive

Monday, December 9: Car Vs. Deer report taken at Station 4

NEW & USED CAR SALES
Stop in - Take advantage of the rebates on model year-end Clearance Prices!



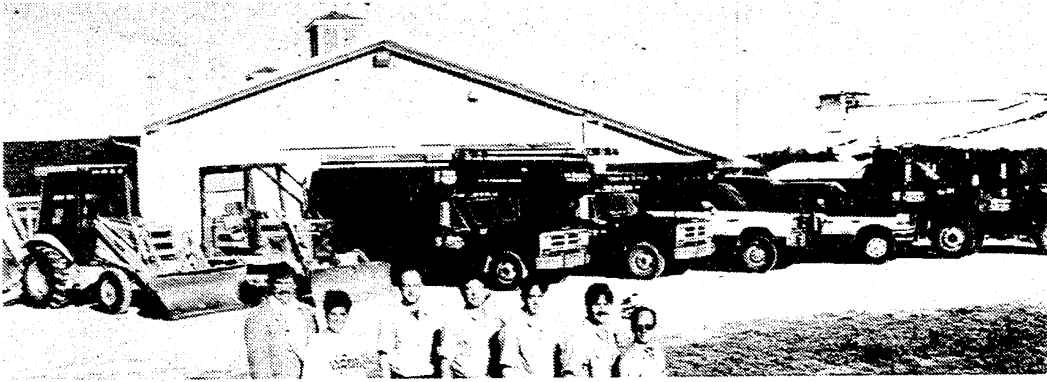
Neil Horning
475-1301

THE AWARD WINNING DEALER
PALMER
Michigan's Oldest Ford Dealer



STEIN ELECTRIC COMPANY, INC.

Licensed & Insured Contractor 24 Hour Emergency Service
Motor Controls & Lighting
Ag. • Commercial Industrial • Institutional Residential • Backhoe & Trenching Services 50 ft. Bucket Truck
Rick Graustein • Manchester, MI • 313-428-9050



DAN'S WESTSIDE AUTOMOTIVE

660 W. Main St. 428-9455
24 Hour Wrecker Service

- | | |
|-------------------|----------------------|
| Tune Ups | Brakes |
| Transmission | Tire Rotations |
| Custom Exhaust | Chassis & Suspension |
| Air Conditioning | Front End & Four |
| Oil Lube & Filter | Wheel Alignment |

WINTERIZE SPECIAL - \$44.95

includes:

Complete inspection of cooling system - Flush - up to 2 gallons new Antifreeze*

Mon - Fri 8:00 - 6:00 Sat 9:00 - 1:00

Free Pick up and Delivery Service

*if sierra needed additional cost

Christmas Traditions



- Complimentary gift wrapping
- Womens coordinates
- Leather coats
- Flannel shirts
- Dockers
- Sweaters
- Gloves & hats

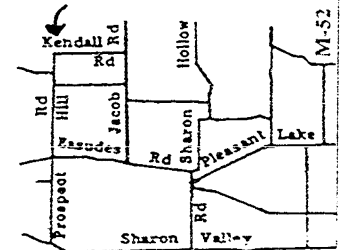
Quality clothing for men, women and children combined with good old-fashioned personal service.

107 & 109 S. Main • Chelsea
(313) 475-1606
Holiday Hours:
Monday-Saturday
9:00 a.m.-9:00 p.m.
Sunday 1:00 p.m.-5:00 p.m.

Frey's Tree Farm

15356 Kendall Rd. 428-1425
Acres & Acres to choose from
Bring a Saw - ours may be busy

- Black Hills \$22
- Blue Spruce \$22
- Douglas Fir \$22
- Frasier Fir \$22



Open daily after Thanksgiving

Bring this coupon for \$2 OFF

BAPTIST CHURCHES

NORTH SHARON BAPTIST CHURCH—Bobby D. Toler, Pastor, Tim Butterfield, Associate Pastor, Sylvan & Washburn Rds- 428-7222; SS 10:am; Morning Church 11:am; Eve. Church 7:pm; Weds. Bible Study & Youth Mtg 7:pm

VICTORY BAPTIST CHURCH—Jon King, Pastor; 423 S. Macomb, 428-7506, Sunday School 10:00 a.m.; Morning Worship 11:00 a.m.; Evening Public Bible Class 6:00 p.m.; Wednesday Praise and Prayer 7:00 p.m.

CATHOLIC CHURCH

ST. MARY CATHOLIC CHURCH—Rev. Francis J. Murray, Pastor; Telephone 428-8811; Masses: Monday thru Wednesday, Friday 8:30 a.m., Thursday 7:00 p.m., Saturday 5:00 p.m., Sunday 8:30 a.m. and 10:30 a.m.

EPISCOPAL CHURCH

ST. BARNABAS EPISCOPAL CHURCH - Rev. Jerrold F. Beaumont, OSP, MTh, DD; 20500 Old US-12; Chelsea; Telephone (313) 475-8818; Worship Sundays at 10:00 AM

LUTHERAN CHURCHES

OUR SAVIOR LUTHERAN CHURCH (Lutheran Church Missouri Synod) Rev. Dale Grimm, Pastor - 1515 South Main Street (M-52), Chelsea. Telephone 475-1404; Heritage Service 8:15, Contemporary Worship 10:30 AM Sundays

ST. JOHN'S LUTHERAN CHURCH—Rev. Erling Aaserud, Pastor Austin Road, Bridgewater; Telephone 429-7434; Sunday School 9:15 AM; Worship 10:30. Various mid-week & Bible study groups.

ST. THOMAS LUTHERAN CHURCH—Rev. John Kayser, pastor; 10001 W. Ellsworth Rd., (5miles North and 6-1/2 East of Manchester); Telephone 663-7511; Schedule: Sunday School 9:30 AM; Worship 10:45

ZION LUTHERAN CHURCH—Pastor David Hendricks; 3050 S Fletcher Road, Chelsea; Church Office 475-8064, Susan Wiley, Secretary 428-7268. Sunday School 9:00AM; Worship 10:15 AM

UNITED METHODIST CHURCHES

MANCHESTER UNITED METHODIST CHURCH—Rev. Thom Davenport, Pastor, 501 Ann Arbor St. Phones: Parsonage 428-8013, Church 428-8495. Worship 10:30 AM

SHARON UNITED METHODIST CHURCH—Rev. Peggy Paige, Pastor, Corner of M-52 and Pleasant Lake Roads; Church- 428-7714, Parsonage- 428-8430; Sunday School 10:00 AM, Worship 11:00 AM

MORMON CHURCH

CHURCH OF JESUS CHRIST OF LATTER DAY SAINTS (MORMONS)—Gary Spooner, Branch Pres; 1330 Freer Rd, Chelsea; 475-1778; Sacrament 9:30 am; Sun. School, 10:40; Relief Soc, Priesthood & Youth 11:40

NON-DENOMINATIONAL CHURCHES

COMMUNITY BIBLE CHURCH — Pastor Jody Riethmiller; 8400 Sharon Hollow Rd. Telephone 428-8709; Worship Service 10:00 AM; Sunday School 11:30 AM; Wednesday Bible Study & Prayer, 7:30PM. All are welcome!

IRON CREEK COMMUNITY CHURCH—Tom Butterfield, Pastor; English and Sharon Hollow Roads; Sunday School 10:00 AM; Morning Church 11:00 AM; Sunday Evening 7:00 PM

CLINTON ASSEMBLY OF GOD—Rev. Richard Coury; 13300 Clinton-Manchester Road; Phone 517-456-7510; Sunday School 9:30AM; Worship 10:45; Sunday Eve 6:30; Weds Prayer, Bible Study, Youth 7: PM

UNITED CHURCH OF CHRIST

BETHEL UNITED CHURCH OF CHRIST—Rev. Richard E. Hardy, minister, 10425 Bethel Church Road at Schneider Rd.; Phones: Parsonage & Church 429-7155/428-8000; Church Service 9:30AM

EMANUEL UNITED CHURCH OF CHRIST—Rev. Dr. Vincent Carroll, Pastor, Phone: 428-8359; Sunday School 9:15 AM, Worship 10:30 AM, Fellowship 11:30 AM

ST. JOHN'S UNITED CHURCH OF CHRIST—Rev. Dr. Nancy M. Doty, Pastor; 12376 Waters Road, Waters and Fletcher Roads, Rogers Corners; Worship and Sunday School 9:30AM

UNITY CHURCH

UNITY CHURCH OF JACKSON—3385 Miles Road, Ackerson Lake, Jackson, MI, 517-764-6900; 11:00 a.m. Sunday Services and Sunday School.

COMMUNITY BIBLE CHURCH

Thursday, December 12: AWANA begins 6:30-8:30 PM

Sunday, December 15: Worship Service 10:00 AM; Sunday School 11:30 AM.

MANCHESTER UNITED METHODIST CHURCH

Wednesday, December 11: 3:15 p.m. Scouts; 6:30 p.m. DISCIPLE Bible Study

Thursday, December 12: 9:30a.m. Senior Exercise; 12:00 noon Senior Meal; 3:15 p.m. Scouts; 7:00 p.m. Trustees; Evening Klager using kitchen

Friday, December 13: 8:00 a.m. Klager using kitchen; 7:00 p.m. Care & Share @ B. Weid's

Saturday, December 14: 10:00 a.m. Choir Cantata Rehearsal

Sunday, December 15: 9:00 a.m. Sunday School; 10:30 a.m. Worship Choir Cantata "Silent Was the Night"; 11:45 a.m. Choir Practice

Monday, December 16: 3:15 Scouts

Tuesday, December 17: 12:00 noon Senior Meal; 5:30 p.m. Scouts; 7:00 p.m. Finance Committee

Wednesday, December 18: 12:00 noon U.M.W.; 6:30 p.m. DISCIPLE Bible Study

EMANUEL UNITED CHURCH OF CHRIST

Wednesday, December 11: 9:00AM School meeting; 1:00PM Emanuel Quilters; 6:15PM Girl Scouts; 6:30PM Basket weaving; 6:30PM Bell Choir; 7:00PM PASS meeting; 7:00PM Missions meeting; 7:30PM Adult Choir

Thursday, December 12: 6:30PM Brownies; 6:30PM Worship; 7:00PM Bible Study; 7:30PM Deacons meeting

Friday, December 13: 7:00PM AA

Sunday, December 15: 9:15AM Sunday School; 10:30AM Advent Worship Service; 11:45AM Confirmation Class; 3-6PM Christmas Open House at Parsonage; 5:30PM Tree of Lights celebration

Monday, December 16: 3:30PM Children's Choir

Tuesday, December 17: 8:30AM School meeting; 6:00PM Memorial Committee meeting; 6:30PM Daisies; 7:00PM Boy Scouts; 7:00PM Church Council; 7:00PM Pre-school Christmas Program

ST. MARY CATHOLIC CHURCH

Wednesday, December 11: Cub Scout meeting, church basement, 5:30-6:30 PM; Agape Group (parish Center) 7:00-8:30 PM; BeFrienders (church basement) 7:00-9:00 PM

Friday, December 13: Children's Choir Rehearsal, 3:30-4:30 PM

Sunday, December 15: Rel Ed, Preschool/Kindergarten, 10:30 AM; Adult Choir, 9:30 & 11:30 AM; Aquinas Group (church basement) 11:45 AM

Tuesday, December 17: Rel Ed., Grades 1-4 (Klager) 3:15-4:15 PM; Rel Ed, Grades 5 & 6 (parish Center) 3:30-4:30 PM

Wednesday, December 18: Cub Scout Meeting, (church basement) 5:30-6:30 PM; BeFrienders Meeting (church Basement (7:00-9:00 PM; Agape Group (parish Center) 7:00-8:30 PM

SHARON UNITED METHODIST CHURCH

Sunday, December 15: 11 AM Worship

BETHEL UNITED CHURCH OF CHRIST

Thursday, December 12: 6:15 PM Children's Choir

Sunday, December 15: 9:30 AM 3rd Sunday in Advent Worship Service - Christmas Cantata; 3 & 4 & Kdg SS; 10:30 AM SS grades 1-8; 6:00 PM Christmas Caroling - all congregation

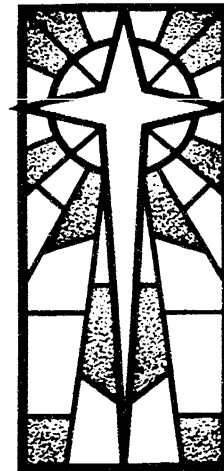
Monday, December 16: 6:15 PM All choirs potluck & rehearsal for Christmas eve

ST. THOMAS LUTHERAN CHURCH

Sunday, December 15: Sunday School, 9:30 AM; Worship Service 10:45 AM

ST. JOHN'S LUTHERAN, BRIDGEWATER

Wednesday, December 11: Jr. Choir, 6:30 PM; Bell Choir, 7 PM; Midweek Advent Service, 8 PM; Sr Choir, 9 PM



Thursday, December 12: 10-12 AM Washtenaw Cluster of Pastors, Trinity.

Sunday, December 15: Sunday School, 9:15 AM; Worship, 10:30 AM; Christmas Caroling, 6 PM

Monday, December 16: Church council, 7:30 PM

Wednesday, December 18: Jr. Choir, 6:30 PM; Bell Choir, 7 PM; Midweek Advent Service, 8 PM; Senior Choir, 9 PM

ZION LUTHERAN CHURCH

Wednesday, December 11: 7:00 PM Finance Committee; 7:30 PM Church Council

Thursday, December 12: 10 AM Cluster Meeting at Trinity

Friday, December 13: 7:00 PM Catechism overnight until 10 AM Saturday; 7:00 PM Wedding rehearsal

Saturday, December 14: 10-12 noon, Christmas Program Rehearsal; 7:00 PM Cheryl Blumenauer wedding

Sunday, December 15: 9:00 AM Sunday School - dress for program 10:15 AM Christmas Program, refreshments following; 12-3 PM Council Potluck & Meeting; 5:30 PM Manchester tree of lights ceremony

Tuesday, December 17: 7:30 PM Senior Choir

Wednesday, December 18: 7:30-9:15 PM In depth Bible Study

ST. MARY CHURCH - 1996 HOLIDAY SCHEDULE

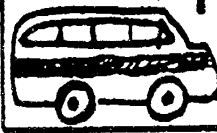
Sacrament of Reconciliation - Individual preparation
Saturday, December 14: 11:30 AM - Noon; 4-4:30 PM
Thursday, December 19: 4-4:30 PM; 7:45-8:30 p.m.
Saturday, December 21: 11:30 AM - Noon; 4- 4:30 PM
Monday, December 23: 4:30-5:00 PM; 7:00 to 8:00 PM

Sacrament of Reconciliation - Group Preparation
Sunday, December 15: St. Andrew, Saline at 6:30 PM
Monday, December 16: St. Joseph, Dexter at 7:30 PM
Tuesday, December 17: St. Mary, Manchester at 7:30 PM
Wednesday, December 18: St. Mary, Chelsea at 7:30 PM
Celebration of Liturgy
Christmas Eve: Tuesday, December 24: Children's Choir Program at 4:30 PM
Mass at 5:00 PM
Adult Choir Program at 9:30 PM
Mass at 10:00 PM
Christmas Day: Wednesday, December 25: Mass at 10:00 AM (Congregational Hymns)

New Years
Eve: Tuesday, December 31, 1996, at 5:00 PM.
Day: Wednesday, January 1, 1997, at 10:00 AM

THE CHURCH PAGE IS BROUGHT TO YOU BY THE FOLLOWING SPONSORS:

| | | | | |
|---|----------------------------------|---|---|---------------------------------------|
| Luke & Barb Schaible | DAN'S WESTSIDE AUTOMOTIVE | Manchester Plastics | <i>WACKER'S GENERAL STORE</i> | Gene DeRossett |
| Pilot Metal Products A Division of Pilot Industries | ALBER ORCHARDS | <i>Dr. Charles Lyon, D.O.</i> | MANCHESTER CAR WASH | MANCHESTER TOOL & DIE |
| David Chartrand | Norm & Olga Walz | MAID IN AMERICA® | HENDLEY & DATSKO, P.C. Attorneys at Law | Manchester Chiropractic Clinic |
| Clark & Penny Getty | S-K Sales, Inc. | KLEINSCHMIDT True Value Hardware | HAROLD BUSS | PAUL & MICHELE KLUWE |
| MANCHESTER KIWANIS | MANCHESTER MANOR | THE MANCHESTER ENTERPRISE | GENE & GERTRUDE SMITH PINNACLE ENGINEERING | HAARER'S MEETING PLACE |

MANCHESTER AREA SENIOR CITIZENS

News

by T.V. Ludwick

"Suitmaker: Santa is getting bigger" caught my eye while glancing through sister Bid's Sunday Dayton, Ohio newspaper. The Knight-Ridder News Service article goes like this: "Maybe it's the milk and cookies. But there's no denying that Santa's getting bigger. His tailor says so. For 27 years, Jenny Zink has been turning out Santa suits in Walnut Creek, California. Her company, Western Staff Services, sells 3,000 St. Nick suits a year at \$400 each. The original 1948 pattern has expanded, inch by inch. Beginning in the 1970's, seamstresses have been steadily letting out the waist and lengthening the jacket. 'Now, we're getting calls for extra large,' Zink said."

No doubt, your child may ask 'Can he still get down our chimney?' I would explain that Santa has all kinds of tricks up his sleeve to delight you and all other kids of all ages. In fact, on this snow-filled morning, there is a nice Santa named Herman out ploughing our driveways with his tractor. Another named Mr. T. goes past with his large snowblower after each snowfall to clear our sidewalks. Don't you all wish you lived in our neighborhood? You have these Santas, too, but ours are special, huh?

Thursday, December 12: Chef's Choice is once again on the menu and whatever, it is always tasty and delights us. Why not come to senior meals and see? We are meeting each Tuesday and Thursday presently at the Methodist Church (up Ann

Arbor Hill) at 12 noon. All who are 55 or older are cordially invited to attend. The price is still \$2.50 and what a bargain! We would love to see you, come on out. You may phone in your reservation to Sandy Smith at 428-8495 from 9-10 AM.

Friday, December 13: Pickup by senior bus begins at 9:15 to go to the Klager School for their Senior Citizens Program and Dinner. Please get reservations in for this meal, would you like to plan for 150 or so folks without knowing how many were coming?

Monday, December 16: A shopping trip is planned for K-Mart and Westgate in AA and is you'd like to go, please call Rubena Boelter at 428-8655 to make your bus reservations (Erma Alber has asked for some time off).

Tuesday, December 17: Baked fish will be good for us this close to the big holidays as it is brain food which we sorely need right now. Suppose it will have that broccoli in it which is so great? Come and see. **Thursday, December 19:** Jan & company (Mesdames Gillow, Hampton and more) will serve up a Christmas meal today and I can't imagine what they may come up with! This is our Christmas present from them, thanks. Then, go to the Center and enjoy bingo.

If you have a ticket, you'll be leaving the Center at 10 AM on **Friday, December 20** for Turkeyville and the dinner theater presentation of 'Dreamin' of the White Christmas.



Happy Birthday to these Senior Citizens who celebrated at December 5th's luncheon: Marion Ahrens, Jeanette Frinkel, Lydia Hoener and T.V. Ludwick

FUND RAISING

Manchester Sportsman Club
 8501 Grossman Rd. • Friday 6:45 p.m.

Manchester American Legion
 203 South Adrian • Saturday, 7:00 p.m.

Kirk Excavating

Sand - Gravel - Fill Dirt
 Basements - Driveways

Licensed & Insured
428-7938

Dave Kirk
 14180 Schleweis Road
 Manchester

"The Reasons To Bank With University Bank Just Keep Adding Up!"
 Mark Ouimet, President

For The Best In Deposit & Consumer Lending Products Call

Jane Finkbeiner, V.P. Retail Operations

For Great Mortgage Rates With Low Fees Call

Jane Dettling, V.P. Residential Lending

For Commercial Lending To Meet Your Small Business Needs Call

Dave Guenther, V.P. Commercial Lending

FREE Checking

FREE ATM*

Money Market 5.38 %* APY

959 Maiden Lane
 Ann Arbor, MI 48105
 (313) 741-5858
 Monday thru Friday 9am - 6pm
 Saturday 9am - 1pm

*Does-Not Include Surcharge Fee (if applicable)
 *Annual Percentage Yield (APY) Effective 12-10-96



McLennan

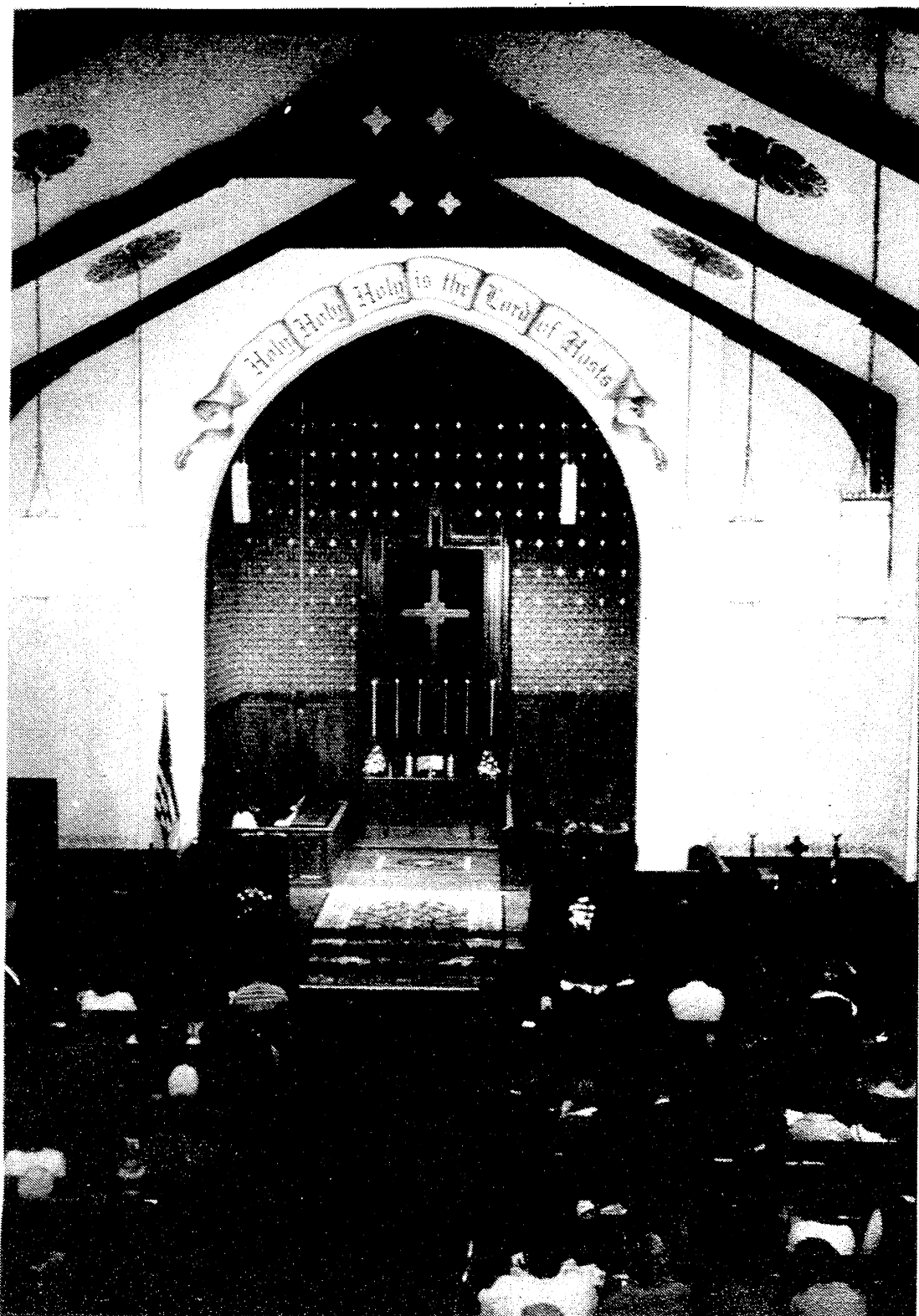
Landscape

A personalized professional service

- Design Consultation
- Plant Installation
- Retaining Walls
- Wild Flowers
- Finish Grading
- Shade Gardening
- Hydro Seeding
- Brick Pathways

(313) 428-7005

Emanuel Church



On Sunday, December 8th the renovation of Emanuel United Church of Christ was declared complete and the doors were reopened for the parish to worship in the newly-beautified sanctuary.

Every pew was filled as the congregation eagerly gathered to see the results of the months of work by many volunteers, artisans, and area contractors.

It was breath taking as you walked through the doors and looked up to the altar which is decorated in deep blue with gold fleur-de-lis and crosses accented with stars in the dome part of the altar. "Holy, Holy, Holy is the Lord of Hosts" has been painted on parchment-like paper, encompassing the altar. The ceiling has gold foil decor around each of the original lights with the wood beams accented in greens, reds, blues, and golds. All of the woodwork has been refurbished as well as the floors. New carpet and vinyl flooring has been laid.

The choir is now seated back in the chancel area as it was in the beginning of the Emanuel Church conception. Our new organ is also up in the chancel area. The windows have all been re-leaded and restored to their original beauty.

Stenciled in on the back

balcony as you exit the church is "Go ye and Serve", a very appropriate sentiment.

This beautification and renovation of Emanuel United Church of Christ will be appreciated and enjoyed by many families and friends in the years to come.

Teresa M. Benedict

Be the **LIFE** of the Party

During this holiday season... be a responsible party host. See that your guests have a good time and arrive home safely. "First A Friend, Then A Host"

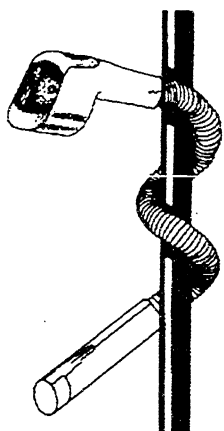
BRIDGEWATER LUMBER COMPANY

HOLIDAY SPECIALS

SALINE OPEN TIL 8 PM ON THURSDAYS

(313) 429-7062
FAX (313) 429-0640
P.O. Box 19
Bridgewater, MI 48115

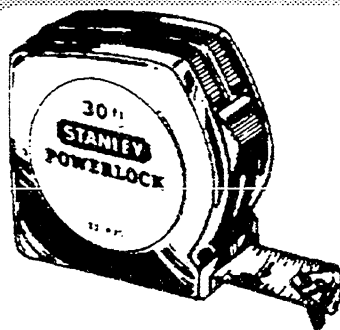
(313) 429-5495
FAX (313) 429-0639
600 E. Michigan Ave.
Saline, MI 48176



Black & Decker Snakelight

\$26⁹⁹

Hands-free convenience. Area lighting can be directed to brighten any task at hand. Flexible core can be bent, coiled, dropped, or wrapped into various positions. High-intensity Xenon bulb. High-impact ABS construction for durability. Includes 2 "C" cell batteries and a spare bulb. SKU:813869.



\$9⁹⁷

Stanley 30' Tape Measure

Powerlock® Tape Rule. Push button lock with power return. Life Guard yellow blade is protected with Mylar for long blade life. Powerlock secures blade position. Belt clip on back of chrome case. Packed on blister card. No. 33-430: 1"x30". SKU:300935.

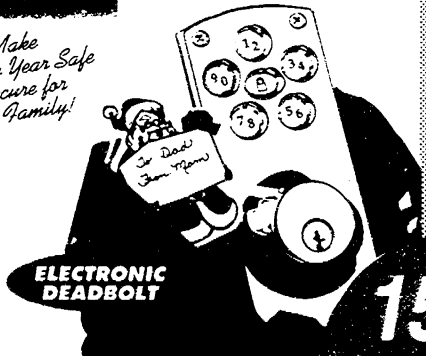
WEISER LOCK

Powerball KEYLESS ENTRY SYSTEM

Make the New Year Safe & Secure for Your Family!

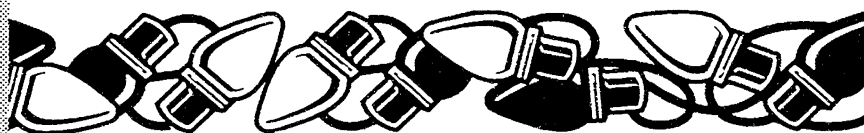
\$76⁹⁹

Weiser Keyless Entry Deadbolt. SKU: ED9470X3. Reg. \$96.99



ELECTRONIC DEADBOLT

15% Off Any Power Tool!
In Stock



Extra Brite 100 Bulb Midget Light Set.
100-Bulb Set (Multi or Clear) \$2.99
50-Bulb Set (Multi or Clear) \$1.99

UL Listed for indoor or outdoor use. Male plug on one end and female connector on opposite end for adding additional midget sets. New hand pack, lights in poly bag. SKU:900052, SKU:900311.

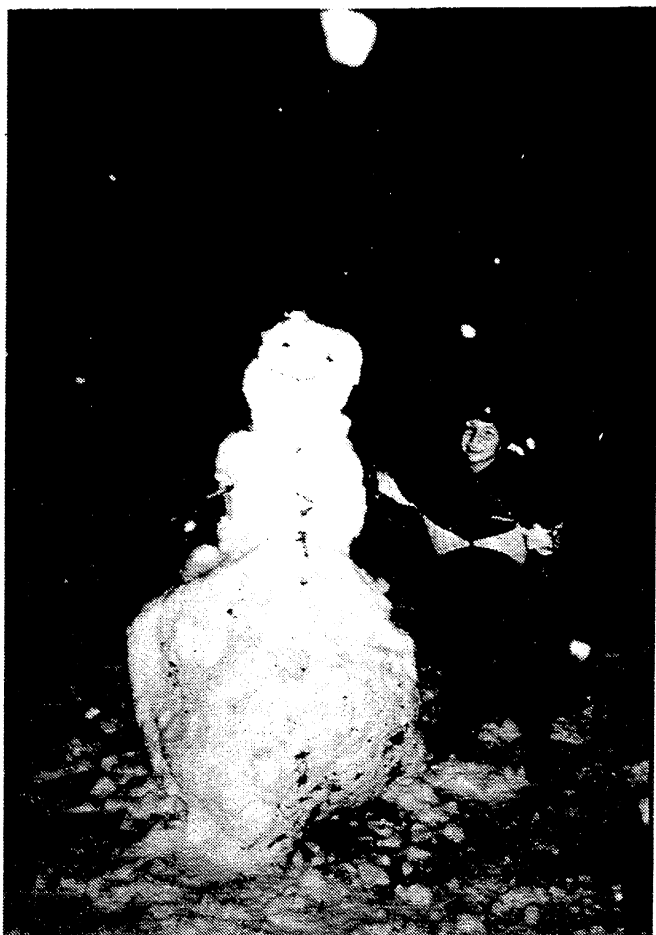
PORTER-CABLE

STANLEY BOSTITCH
Stanley Fastening Systems

Makita

DELTA

MANY MORE GREAT GIFT IDEAS!



This past Thursday brought with it some wonderful packing snow which resulted in many fabulous snowmen popping up all over the town. While driving around the area I couldn't help but stop and enjoy the art that was displayed by the young and young at heart.

Hope you had the opportunity to build one or enjoy watching someone take pride in their creation!

TMB



MANCHESTER Market
 Prices good thru December 15, 1996 455 W. Main

CHUCK ROAST
 \$1.69 1lb.


Creemee Ice Cream
 1/2 gal 2/s3.00

Pepsi
 2 Liters 99¢ +Dep

Hours: Mon - Sat 8am to 9pm Sunday 9am to 7pm

PALMER FORD - MERCURY
 Chelsea, MI

83 Years in Chelsea!
 Michigan's Oldest Dealership!
 Highest Rated Service Dept. In The Area!



Mike, Kelly, and Chene Kushmaul

There's more than **THREE GREAT REASONS** to do Business with me ...

I Won't Be Undersold!

3 Big Lots Full of Inventory!

I'm Ready to Deal

*Plus tax, title, destination. Rebate to dealer.

THE AWARD WINNING DEALER
PALMER FORD MERCURY
 Michigan's Oldest Ford Dealer

Open Mon.-Thurs. 'til 8, Sat. 'til 3 p.m. • SERVICE OPEN SATURDAY, TOO

CHELSEA minutes away, I-94 to M-52 475-1381
 North 1 1/2 miles downtown • PLENTY OF PARKING

DISTINGUISHED ACHIEVEMENT FOR QUALITY

School

MANCHESTER COMMUNITY SCHOOLS BOARD OF EDUCATION

Regular Meeting - December 16, 1996 - 7:30 PM
Luther C. Klager Elementary School - Multi-Purpose Room

- I. Call To Order/Pledge of Allegiance
 - II. Roll Call of Board Members
 - III. Public Hearing—Breakfast Program
 - IV. Official Meeting Reports
 - A. Minutes of Regular Meeting November 18, 1996
 - B. Minutes of Special Meeting December 4, 1996
 - C. Treasurer's Report
 - V. Communication
 - A. Correspondence
 - B. Visitor Input
 - VI. New Business
 - A. Personnel
 - Superintendent's Renewal Clause
 - B. Board Policy—Purchasing #3540
 - C. Technology—Software for Media Center
 - D. Waiver of Membership
 - E. Breakfast Program
 - VII. Discussion Items/Reports
 - A. Fall Athletic Report
 - B. Building Project
 - C. Art Curriculum
 - D. Technology Usage Agreement
 - E. Board Response to Middle School Band Students
 - VIII. Closed Session Negotiations
 - IX. Adjournment
- Special accommodations for persons with handicapping conditions will be provided if such persons contact the Manchester Community Schools, 313-428 9711, in advance of the meeting.

Students vs. Teachers at MHS

Wednesday and Thursday night were both exciting times at the high school last week. First, on Thursday, the Varsity Quiz Bowl Team went up against members of the faculty in a heated debate. Both Mr. Smiths, one a principal, one the ISS supervisor/ Bible Boy, Mr. Hastings, Frau Davis, and Mrs. Purol competed for the teacher-holding title of the year. Quiz Bowl members who gave it their all were: Angelo Petrino, Sean Clifford, Brad Kemner, Tim Hough, Chris Gilbert, and Amber Reed. The first match was close, the teachers ahead by only 20 points, with a score of 210-190. In the next match, the teachers pulled ahead, finally winning 340-145. The high scorer for the students was Angelo Petrino with 90 points. Frau Davis and Greg Smith also

had equally impressive days.

Also last week, on Thursday night, the faculty and The Varsity Basketball team went head to head, in their annual matchup. The boys succeeded in taking the faculty holding title away, winning 77-74. Some of this year's faculty and coaches included Mr. Easley, Mr. Gall, Mr. Ball, Brian Barnard, Coach Kuebler, Jeff Rauch, Mr. Vitale and Coach Steele. The lead scorer for the Dutch was Ryan Fielder, with 17 points.

This week, Wednesday, the Quiz Bowl team is home against Whitmore Lake, and the basketball team travels to Clinton. On Friday, the boys play home against Lenawee Christian. Lots of Luck teams, as you compete this week!!!

Lacea Curtis

News from Nellie Ackerson Middle School

From the National Institute for Mental Health Initiatives comes a program created to help parents learn to deal with their anger. The program is built on the acronym "RETHINK." Each of the seven letters represents an important part of anger management. They are as follows:

Recognize when you are angry, when your children are angry, or when anger covers other feelings. Teach your children to recognize their own anger.

Empathize with the person who is making you angry. Put yourself in that person's shoes. Stepping back during an anger attack will help you and your child empathize with the source of anger.

Think about the same situation in a different way. Often, anger comes from how we look at things. Try to find humor in the situation. Teach your children to look at the situation differently so that they can find constructive rather than destructive solutions.

Hear what the other person says - listen for feelings as well as to the words themselves. Repeat what you hear back to your child to make sure you understand correctly.

Integrate love and respect with an honest expression of your anger. Teach your children that angry feelings cannot break the bonds of love. Your children may seem disrespectful when they are angry. Let them talk it out. Later, teach them more respectful ways to address their anger.

Notice what your body feels like when you get angry. Signs may be a faster heart rate, breathing changes, headache, upset stomach or muscle tension. Teach your children to recognize these signals in themselves. Teach them ways to calm themselves.

Keep your attention on the present problem. Don't bring up old grudges.

Learning and applying the RETHINK skills requires a great deal of effort from you and may require the support of a professional as well. Practice is important as you become comfortable with anger management skills.

School Meals

We serve education every day

Menu Subject to Change Without Notice

Monday, December 16:
 Cheeseburger; cheetos cheesy checkers; applesauce; strawberry yogurt; milk

Tuesday, December 17:
 Folded Grilled cheese; chips; coleslaw; orange; tomato soup; milk

Wednesday, December 18:
 Soft Shell tacos; corn; ice juicee; milk

Thursday, December 19:
 French Bread Pizza; carrot sticks, fresh fruit, and fun fruits; milk

Friday, December 20:
 Holiday Dinner: Fried Chicken, Mashed potatoes with gravy; green beans; dinner roll; holiday cookie; milk

Faist-Morrow

the Place to Go for a New or Used Vehicle

"Where the QUALITY Used Cars Are"

1500 S. Main St.
 Chelsea
 475-8663



Cut your own

CHRISTMAS TREES

SCOTCH PINES \$16⁰⁰



Table Top to 9 ft.

Decorate your home this season with wreaths, door swags and centerpieces.

Cemetery Wreaths also available.

Pine View Farms
 10998 Hardcastle Rd.
 Brooklyn - 592-3892
 10 - Dusk Tuesday - Sunday



P.ositive
A.ccommodations
S.timulate
S.uccess

Social Competence - Can We Teach it?

Why is it that some people are so good interacting with other people and others are so bad? Why is it that you can give some people "that evil eye" when they are socially misbehaving and they just continue the bad behavior? Why is it that some people always put their "foot in their mouth" around other people? How do some people always know the right thing to say in a situation? How do some people get so good at "reading" people's expressions and fulfilling their needs without much conversation?

First of all our **temperament**, whether we are reflective or impulsive, and our **character**, whether we are an introvert or an extrovert, are two factors that we were born with and these will influence our social competence. But the third factor that affects our social competence is our social awareness. Social awareness is one's awareness of one's environment and their ability to predict what will happen next. Social awareness is something we learn through experience and it is also something that we can be taught. If you think of social awareness in these three criteria you can begin to see how you learned social competence and how you could teach it: i) *social sensitivity* is understanding the what of the person in the social situation with you, ii) *social insight* is understanding why a person does something and iii) *social communication* is how we interact with each other.

In order to improve our own social competence or to teach it to others we need to understand the steps that one takes when in a social situation and then we need to identify which steps need to be strengthened. Here are five steps - remember that a person goes through these five steps in a split second.

• **Encoding process** - attends and recognizes social cues. A person with vision and auditory problems might have trouble

developing good encoding skills.

• **Interpretation process** - interpret and integrate social cues into current knowledge base. A way to test your ability or practice your ability is to watch television with no sound and see how good you are at reading faces and body language. Some teachers have students watch (with no sound) clips from a soap opera to teach this. A classroom discussion of what certain facial expression means can be very educational especially when they can be replayed once an interpretation is made.

• **Response search** - have I encountered this situation before and what did other people do in this situation. Some people with memory retrieval problems have difficulty with this step and remedial treatment is to teach them lots of options - kind of like filling up their rolodex with social responses.

• **Decision making process** - generate predictive consequences of different responses. If I do this I know they will respond like this. This can be taught through role playing. Sometimes after someone has socially misbehaved (and after all parties have cooled down) you can revisit the situation reversing the interaction.

• **Response selection** - choosing which response you are looking for in the other person. Do you want to make someone else feel good or bad.

This information was obtained at the November LDA state meeting in Lansing from Nanette Clatterbuck and James Grant. This was a three hour workshop so only a small portion of the material is presented here. One important point the presenters made was that social skills should not be taught solely in isolation but rather need to be integrated into other situations.

If you would like to see more of the notes from this workshop contact us. Call 428-0738 and leave a message.

Coming Soon: Holiday Band Concerts!

The Manchester Community Schools would like to announce our annual winter concerts for the middle school and high school. The seventh and eighth grade Band and the High School Band will be performing at Manchester High School in the multi-purpose room at 8:00 PM on Thursday, December 12, 1996.

The fifth and sixth grade bands will be performing at the Middle School gymnasium on Tuesday, December 17, 1996 at 7:00 PM. The cost for these events is free. In addition to the band performances, there will be a number of smaller groups and solos. Everyone is welcome.



Middle School Basketball

Manchester had no games the week before Thanksgiving, because on Monday there was a confusion of who was the home team. There was no game Wednesday, because of Thanksgiving..

Manchester played Columbia last Monday. We were home at the Manchester Middle School Gym with a tough foe Columbia. We had a rough night last Monday, with a 7-13 score in the first period. Chad Roberts made one basket for two points. Jacob Geyer made a free-throw and Luke Hollosy made a two-pointer and two free-throws for a total of four points.

In the second quarter trouble continued with a 11-21 score. Jeff Punches was the only one to score that period with one basket and two free-throws for four points.

We started a come back, but it wasn't fast enough. We still trailed 17-26. Jeff Punches was on a roll in the third quarter with three baskets for six points.

Our come back continued but still not fast enough, because the score ended at 24-31. Jacob Geyer, Luke Hollosy, and Mike Walter all made one basket for two points each. Jacob Sawyer made one point with a free-throw.

We may have lost Monday, but we came back and won Wednesday night against Grass Lake. Jeff Punches was our lead scorer with 13 points. Brent Leverett made 8, Jacob Sawyer scored 4, Clint Grenier scored 3, Aaron LaRock and Chris Loud both scored 2. Luke Hollosy also scored 1.

In the first quarter we started out with a nice lead of 7-4. Brent Leverett, Jeff Punches, and Chris Loud all made one basket for two each. Luke Hollosy also made a free-throw.

By the end of the first half we were still in the lead with a score of 12-10. We would not let them take a lead on us. Jeff Punches and Brent Leverett each made another basket for two points each. Clint Grenier also made a free-throw.

After the third quarter we were still in the lead with score totals of 20-12. Our defense only let one basket get through. Brent Leverett made two baskets for four points total. Jeff Punches and Clint Grenier each made a basket for two points each.

At the end of the game we won 33-20. Our offense kicked in that quarter scoring 13 points total. Jeff Punches made two baskets and three free-throws for a total of seven points. Jacob Sawyer made two buckets for four points. Aaron LaRock also made a basket for two points. Manchester played an excellent game Wednesday. Go Manchester!

Jeff Chapin

The eighth grade Dutch played a home game against Columbia. We had a tough game that night with a huge size disadvantage. In the first period we trailed 4-8. Mike Conway and Evan Wahl each sunk one for two points each.

By the second half we trailed 12-20. We just couldn't stop their offense. Mike Conway made a basket, one free-throw, and an excellent three pointer. Brett Maki made a basket for two.

In the third quarter it got even worse with a score of 14-28. I think it might have happened because of intimidation from their size. Kevin Turk was the only one to score that period with one basket for two points..

The sliding downwards of our score continued with a final score of 19-39. Brett Maki and Evan Wahl each made one basket for two points each. Kevin Turk also made one free-throw.

Wednesday night we played Grass Lake at Grass Lake. Our lead scorer was Kevin Turk with 8 points. Evan Wahl John Miller, and Mike Conway each scored 6. Brett Maki made 2, and William Robertz scored 1.

We started out rough with a score of 4-7. Kevin Turk and John Miller each made one basket for two points each.

In the second quarter their lead decreased to 12-14. Evan Wahl Mike Conway, Brett Maki, Kevin Turk each made a two-pointer.

In the third quarter their lead extended to 18-26. We could not stop their offense so they scored 12 points. Kevin Turk made a two-pointer and a free-throw for a total of three points. John Miller made a bucket for two points. Evan Wahl also made a free-throw.

In the third quarter we made nine points straight in under three minutes coming back in the lead after that quick nine points they started to regain their lead with a final score of 30-40. Mike Conway made two buckets for four points.. Evan Wahl made a basket for two points and a free-throw. John Miller made a two-pointer. Kevin Turk made two free-throws. William Robertz made one free throw.

The Flying Dutch Men have their games on Monday and Wednesday come watch the action. Go Dutch!

Jeff Chapin

HOMEOWNERS! STOP
living from paycheck to paycheck!

LOANS BY PHONE
SAME DAY APPROVAL!

Lansing: 1-517-886-0101 Statewide: 1-800-718-3738
AAA MORTGAGE & FINANCIAL CORPORATION



Pages Book Fair

Come finish your holiday shopping at the Pages Book Fair coming to the Manchester Middle School Library on Wednesday, Thursday and Friday, December 11, 12 and 13, and Monday and Tuesday, December 16 and 17. The Book Fair will be open during the school day to Middle School students and to the public from 2:30 to 4:30 PM. Shoppers at the Book Fair will find a selection of posters, bookmarks and books for all ages. Profits from the Book Fair will help fund library books and materials. Please stop by and receive a free poster with any purchase totaling \$10 or more.



FUND RAISING

Manchester Sportsman Club
8501 Grossman Rd.
Friday 6:45 p.m.

Manchester American Legion
203 South Adrian
Saturday, 7:00 p.m.

Wacker's General Store

Holiday Fruit & Gift Baskets made to Order
Many Baskets to choose from or bring in your own.
We'll fill it to your specifications!

Lots of Goodies to choose from

Nuts
Smoked Fish
Wines/Liquor
Candy
Fruit
Cheese
Meats

Corner of M-52 & Pleasant Lake Roads, Manchester
Call 428-8366 or 1-800-535-5949

★ 517-265-3055 ★
24 Hour Movie Hotline
ADRIAN CINEMA 6
3150 N. Adrian Hwy
Dec 13-Dec 19

Shows Before 6PM \$3.50
*Free refill Pop & Popcorn Dame Day Only *
Free Listening Devices for the Hearing Impaired*

DAYLIGHT PG-13

DAILY: 4:40, 7:15, 9:45

SAT+SUN 1:20, 4:40, 7:15, 9:45

SPACE JAM PG

SAT+SUN ONLY: 11:45AM

JERRY MAGUIRE R

DAILY: 4:15, 7:00, 9:40

SAT+SUN: 1:00, 4:15, 7:00, 9:40

MARS ATTACKS PG13

DAILY: 4:50, 7:10, 9:30

SAT+SUN 12:00, 2:30, 4:50, 7:10, 9:30

THE PREACHERS WIFE PG

DAILY: 4:45, 7:20, 9:55

SAT+SUN 11:50, 2:20, 4:45, 7:20, 9:55

101 DALMATIANS G

SAT+SUN: 11:45, 2:15, 4:50, 7:30, 9:50

DAILY: 4:50, 7:30, 9:50

JINGLE ALL THE WAY PG

DAILY: 5:00, 7:30, 9:40

SAT: 12:30, 2:45, 5:00, 9:40

SUN: 12:30, 2:45, 5:00, 7:30, 9:40

7:30, 9:40

James C. Schneider
Owner



Schneider J.C.S. Service

Sales & Rental Janitorial Equipment & Machines
Janitorial Service • Carpet Cleaning

428-1880 Business
428-1070 Residence

146 E. Main Street
Manchester, MI 48158

The Brooklyn Hotel

131 N. Main St.
Brooklyn
(517) 592-0700



Restored Victorian Hotel and Restaurants

Featuring Great American Cuisine

Early Bird Special 5 - 6 pm \$8.95

Sunday Brunch 11 - 3 \$8.95

☞ Open Daily 8 AM - 10 PM ☞

Warwick David Armstrong, Ph.D.

Licensed Psychologist
Licensed Marriage Counselor

Office Hours by Appointment
428-0456





Gabriel Winston Jacob

Bill and Anna Jacob are proud to announce the birth of their son, Gabriel Winston, on November 27, 1996, weighing 8 pounds, 8 ounces, and 21 inches long.

Gabriel joins brothers Zachary, age 8, and Elijah age 3. Maternal grandparents are Tom & Lynn Heath. Paternal grandparents are Jerry Jacob and Joyce Woodruff, all of Manchester.

Navy Hometown News

Navy Petty Officer 3rd Class Jonathan J. Sheppard, son of James and Sharon K. Runski of Wolf Road, Manchester, has departed on a six-month deployment to the Mediterranean Sea aboard the guided missile destroyer USS Ramage.

Sheppard is one of more than 300 Sailors aboard the guided missile destroyer who departed his home port of Norfolk, VA as part of the USS Theodore Roosevelt Battle Group.

Sheppard and his fellow crew members spent last year training for a variety of situations they might encounter during the deployment. The 1984 graduate of Churchill High School in Livonia, joined the Navy in June, 1984.

Engagement Announced



Kathleen Kidd • Kevin Bloch

Kathleen Kidd and Kevin Bloch are engaged and planning a May 1997 wedding.

Kevin holds an Associates Degree from Schoolcraft College in Culinary Arts, and is currently employed as a restaurant manager for Long John Silvers. He is the son of Barbara & Gerald Bloch of Livonia.

Kathy is the daughter of Maynard and Alice Kidd of Manchester. She has her MA from Eastern Michigan University in Communications, and is working on her second Bachelor's Degree at Madonna University. Kathy is employed at St. Joseph Mercy Hospital as a dispatcher.



**FELDKAMPS
CHRISTMAS TREES
& FRESH WREATHS**

"You Cut or We Cut"

- Long & Short Needle trees
- All sizes Including Oversize Varieties
- Opens The Day After Thanksgiving

FRI-SAT 9-5 & SUN 1-5 (or by appt)

428-8571

Pleasant Lake Rd./Smythe Rd. intersection

College News

PHI SIGMA PI NATIONAL HONOR FRATERNITY INDUCTS CHARTER MEMBER

Phi Sigma Pi National Honor Fraternity is pleased to announce the induction of **Melanie Kapa** of Manchester as a charter member of the newly activated Gamma Mu Chapter at Central Michigan University. Phi Sigma Pi National Honor Fraternity is an organization based on the principles of scholarship, leadership and fellowship.

Membership in Phi Sigma Pi is open to undergraduate students from all academic disciplines who possess a minimum cumulative grade point average of 3.0. Phi Sigma Pi recognizes students with high academic achievements and rewards them with membership in our highly active organization.

Nationally, Phi Sigma Pi is a member of the Professional Fraternity Association, has over 65 collegiate chapters and is rapidly expanding to selected campuses across the United States.

MSU lists Fall Grads

Michigan State University lists 2,173 degree candidates for Fall, 1996. In two separate graduation ceremonies on Saturday, December 7, Lansing Mayor David Hollister addressed undergraduate degree candidates, including two Manchester residents.

Bridget B. Deschaine received her Bachelor of Science in Engineering Arts; and **Edward J. Harris** received his Bachelor of Science in Packaging.

LOCAL STUDENTS INCLUDED IN WHO'S WHO

A total of 19 students from this area are included in the 30th Annual Edition of *Who's Who Among American High School Students*®, 1995-96.

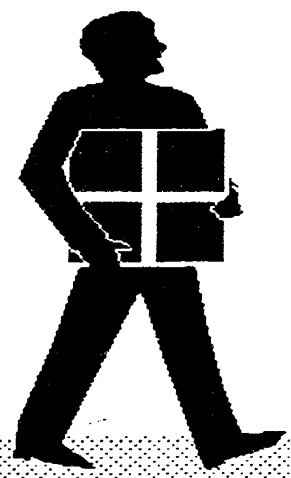
Who's Who, published by Educational Communications, Inc., Lake Forest, Illinois, is the largest high school recognition publication in the country. Students are nominated by high school principals and guidance counselors, national youth groups, churches and educational organizations based upon students' academic achievement and involvement in extracurricular activities. Traditionally, 99% of *Who's Who* students have a grade point average of 'B' or better and 97% are college bound.

The 30th edition of *Who's Who*, published in 18 regional volumes, features over 750,000 students or just 5% of the nation's 14,000,000 high school students. They represent approximately 18,000 of the 22,000 public, private and parochial high schools in the country.

Who's Who students also compete for \$150,000 in scholarship awards and participate in the publication's annual opinion poll of teen attitudes. The book is distributed to up to 15,000 high schools, colleges, universities and public libraries throughout the country.

Local students selected include: **Jennifer Clark, Lisa DuRussel, Jodi Feldkamp, Colleen Geyer, Andrea Hughes, Denise Jacob, Nichole Jensen, Carmen Kapa, Jennifer Manwaring, Hydy Paige, Kelly Parr, Pamela Preston, Jessica Richards, Katie Roberts, Jennifer Sahakian, Stephanie Somerville, Katherine E. Tolen, Justin Turk, and Elesa Walakonis.**

Ship Your Packages for Christmas Early with Us!



With our Package Express Center located right here in the store, you can "Ship Where You Shop!" Just bring it along with your shopping list and we'll take care of the rest.

*We have supplies -
to help with your shipping needs.*

Manchester Pharmacy



128 E. Main 428-8393
Mon-Fri 9-6:30 Sat 9-5

This Year Get Your Shopping Done Early!

Call Gigi's for all your decorating needs...
Wreaths, Garlands, Poinsettias

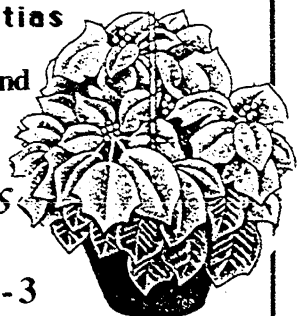
We can lighten your Holiday Stress and
decorate for you - Home or Business.

Gigi's Flowers and Gifts

103 N. Main St., Chelsea
Mon - Fri 9 - 6 New Sat Hours 9 - 3

We service the Manchester Area - deliveries twice daily.

475-3040



Santa Claus is Coming to Town!



Santa is coming to town on December 15 from 1-3 PM. Come see him at Chapters & Verses on Main Street!

Gift wrapping will be available, as well as photos on buttons.

Come and join the fun and have a merry Christmas! Sponsored by the Manchester High School Key Club.

10% OFF
Any Gift Certificate
or Lotion thru 12/24

TROPICAL EFFECTS

Tanning Salon
428 - 0504

Walk-ins Welcome 20436 E. Austin Rd.

Hours: M - W 10-1, 2-8, T-Th 2-8
Fri 10-1, 2-6, Sat 8-noon, Closed Sun
Open Christmas Eve 10 - 1:00



Hillside Tree Farm

4714 U.S. 12, Tipton
4 miles west of M-52 • (313) 274-0681

Fri. 12-5, Sat. & Sun. 10-5
Wagon Rides, Tot tree lot,
play area, Warming barn
with food, beverages,
fireplace, crafts and SANTA
on weekends
Scotch Pine & Spruce,
Cut your own \$8-29
Other Varieties Pre-cut



CLINTON FOOT & ANKLE CLINIC
301 W. michigan Ave. • Clinton, MI
517-456-4114

Offering complete foot and ankle care for the
entire family.
-Specializing in-

Reconstructive Surgery
Sports Injury
Infant and Child Disorders
Diabetic Care
Foot and Ankle Injuries
Heel Pain
Foot Pain
Hammertoes

Laser Surgery
Warts
Ingrown Nails
Fungus
Nerve Pain
Skin Problems
Bunions
Calluses

Orthotics (Custom Casted Shoe Inserts)

DAVID R. LEVITSKY, D.P.M.

Board Certified Surgeon

Member of: American Podiatric Medical Association
Michigan Podiatric Medical Association

Hours: Tuesday/Fridays 10:00 - 5:00 p.m.

Saturdays 10:00-12:00

Please call for appointment - Most insurances accepted

Gifts for:

Her

Jewelry
Potpourri
Candles
Banners
Note Cards
Santas
Winnie the Pooh
Photo Frames
Framed Prints
Nightshirts
Wall Accessories
Hand Cream
Accent Furniture
Handbags
Wind Chimes
Decorative Rugs
Trinket Boxes

Him

Stress Balls
Attache Cases
Dutchman Sweatshirts
Fishing Ornaments
Golfing Goodies
Hunting items
Framed Prints
Trains, Planes, Cars,
& Tractors
Pens & Note pads
Key Chains
Pewter Crosses
Signs
Photo Frames
Decorative Rugs
Banners
Wind Chimes

Kids

Beanie Buddies
Stuffed Animals
Puzzles
Toys Galore
Waistbags
Jewelry
Diaries
Journals
Mickey Moose
Winnie the Pooh
Hello Kitty
Keroppi
Pillow Buddies
Stickers
Dutchman
Shirts, Shorts,
Sweatshirts, & Bags

Stocking Stuffers for Everyone too!

**Why fight the crowds when you
can shop right here in town!**



CLAMITY JANE'S

109 E. Main ★ 428-1122

Extended Holiday Hours:

Mon - Sat 10 - 5, Thurs 'til 8pm and Sun 12 - 5

A Gift to the
Community Resource Center
Benefits
Our local community.

Friend: Contributions of \$10.00 - \$100

Patron: Contributions of \$10.00 - \$299

Major Sponsor: Contributions of \$300 or more

I want to support the mission of the
Community Resource Center. Enclosed is my
contribution of \$_____. Amount of check to the
Community Resource Center is tax-deductible.

Thank You!

Name: _____

Address _____

Please mail your donations to the Community Resource Center,
P.O. Box 433, Manchester, Mi. 48158.

Organizations

Shakespeare Reading Club

Chapters & Verses

Special Pre-Christmas Hours

Mon, Tues, Wed, Sat: 9 - 6

Thurs: 9 - 8

Sun: 12 - 5

Check out our Wonderful Christmas Gifts- Books, CD, Tapes, Puzzles, Toys, and much more!

The Shakespeare Reading Club met on November 26th in the Fireside Room of the Methodist Church. Shirley Carpenter, as hostess, gave a talk entitled Jane Austen's Town and Country Style."

Jane Austen (1775-1817) was born of good lineage into rural England where family connections determined a young girl's destiny. She wrote wryly about the social life she knew so well. With wit and humor her novels portrayed the lives of young heroines

who with wit, charm, common sense, compassion, and always integrity wend their ways through the maze of elegant balls and formal teas and long visits to relatives in London during the winter social season or to their country manors during the warmer months. Eventually each meets the attractive and suitable young man who rescues her and they supposedly live happily ever after. There were many pictures of the Austen family and the typical manor houses of the period available for all to see.

Surprisingly few pictures of Jane herself have survived.

Miss Austen herself never married although there was reportedly a romance which ended sadly in the young man's death, and later an accepted proposal that was declined the following morning.

The topic was made timely by the discussion of the many recent movie and TV productions of "Pride and Prejudice," "Sense and Sensibility," and "Emma," based upon Austen novels.

- Gail Curtis

SEE HOW CREATIVE YOU ARE!
COME IN AND CUSTOM DESIGN YOUR OWN

round brilliant diamonds princess cut diamonds
oval diamonds
sapphire ruby
emerald

ADDALINK
BRACELET

Winans Jewelry
108 S. Main ★ Chelsea, MI 48118
475-2622

Holiday Hours:
Starting Friday Dec. 13th
Open Daily 9:00 am - 8:00 pm
Saturday 9:00 - 5:00 pm

Vacation Packages • Cruises
Airline Tickets • Hotel
Corporate Travel • Car Rentals

Prestige Travel Services

Sandy Alber -
Travel Consultant

Fax: (313) 428-8873
Phone: (313) 428-8838 or
1-800-937-3494 ext. 824

Schebor Greenhouse
14345 Logan Rd. Manchester 48158
428-8078

Poinsettias \$5 - \$23.75

Two new varieties:
Monet (*Rose Tricolor*)
Silver Star (*Red with whitelgreen variegated leaf*)

Order early while our supply lasts!

Open 7 days a week 10 - 5

DO YOU HAVE HIGH BLOOD PRESSURE?

We are looking for patients to screen for a clinical research study using a new medication for the treatment of hypertension. Reimbursement for travel and time offered

Chelsea Internal Medicine
 University of Michigan Medical Center

If you would like to know more, call:
Judy Willams at
(313) 475-8677 extension 29

TEFFT Tree Farm
and Landscaping
11711 Austin Road, Brooklyn
517-536-4164

Scotch Pine - You Cut \$16
Other Varieties Pre-cut and priced

Open
Weekdays 3pm - dark; Dawn to dusk
on Saturday

Announcements

Ann Arbor Ballet Presents "Nutcracker"

On December 12, 13 and 14, 1996, the Ann Arbor Ballet Theatre will present their 12th annual Nutcracker Ballet, at the Power Center for the Performing Arts in Ann Arbor. Music will be by the Michigan Sinfonietta. This is a Russian classical ballet production of E.T.A. Hoffman's beloved story set to the music of Peter Tchaikovsky.

Tickets are available at the Michigan Union Ticket Office (313-764-TKTS). Prices are \$18 Adults, \$8 Children 12 and under. Groups of 20 or more can get tickets for \$10. Seniors and students with ID are \$10.

Chelsea Hospital offers Community Programs

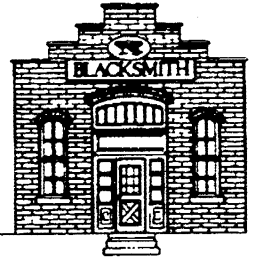
CPR for Adult Victims, American Heart Association curriculum, is being offered through Chelsea Community Hospital Community Health and Wellness Program Thursday, December 12 from 6:00-10:00 PM. Class meets in the Hospital's Woodland Room. To register and for more information, call (313) 475-4103.

Enjoy the holidays even more this year by reducing common holiday pressures. "Coping with Holiday Stress" by Ruth Philiben, RN, BSN, is the topic of a FREE Community Health and Wellness Program offered by Chelsea Community Hospital. Empowerment and

choice will be emphasized by Ms. Philiben in this Wednesday, December 11, 7 PM lecture in the hospital's main dining room. For more information and to register, call (313) 475-4103. Registration is required.

Keeping in Touch with your Mental Health, "An Expert's Explanation of Psychiatric Medications" will be presented by Dr. Frank Colligan, Medical Director of the Behavioral Health Services of Chelsea Community Hospital. This FREE lecture will meet in the hospital's Private Dining Room, Thursday, December 19, 7:15-8:30 PM. For more information please call (313) 475-6051.

Manchester Area Historical Society



The Manchester Area Historical Society would like to invite you to the annual Old Fashioned Community Christmas party. This year, MAHS members Reverend Dr. Vincent Carroll and his wife Molly have graciously offered their home on the corner of Main Street and Macomb for the festivities.

You don't have to be a member of the historical society to attend you'll still have a wonderful time enjoying the old ways of celebrating the holiday: Christmas carols and cookies candle-light and good fellowship. Party-goers are asked to bring two dozen cookies - one for munching that evening, and the other for sharing in our cookie exchange. Donations from our cookie exchange go to benefit Manchester Family Services.

Please join us Wednesday December 18th, at 7:30 PM for a wonderful good old fashioned time with friends - and a great opportunity to make new ones! For more information, please call Deb Havens at 428-8586 or Howard Parr at 428-9233.

CRC Ends Another Year



The Community Resource Center (CRC) celebrated its ninth successful year on December

7th. The challenge for the CRC in 1987 was to assist Double A Products Co. dislocated workers in finding new jobs; to assist with mental health conditions of the individuals, and to help with the needs of families affected by the unemployment. Assisting low-income families continues to be a high priority. People like you may be aware of someone in a similar situation in 1996.

The Community Resource Center is governed by a volunteer board of directors and employs one staff person as the director.

The mission statement for the CRC asks the organization to identify and meet the human service needs of people in the Manchester School District and provide a forum for local community and other organizations.

The organization is successful because of support from local and county resources. Thank you for the support you may have given in the past or are considering for the future.

The Community Resource Center is funded by Manchester United Way (\$4,000); Chelsea Community Hospital Benefit (\$5,000); Village of Manchester (\$1,500); Sharon Township (\$300); Washtenaw County (\$5,000); Substance Abuse Coordinating Agency for Washtenaw & Livingston Co. (\$5,000); Business, churches, fund-raisers (\$4,000); Other contributions (\$5,000), for a total budget of \$29,800.

Some of the projects, organized by volunteers, are the Manchester Golf Open, Christmas in the Village Arts and Crafts Show and the circus. The contributions come from people like you who are concerned for our community. The above amount of money is needed for basic operation of the Community Resource Center. Additional

funds would be used to employ a half-time office assistant, freeing the director to communicate and meet with local, county and state representatives. This networking process enables our local community to benefit from more resources in a cost-effective manner.

What does the mission mean to you? In the past nine years the Community Resource Center has identified the following unmet needs of the people in the Manchester School District. Lack of recreational programs for all are groups. Need for additional educational and cultural opportunities. Concern for adequate and accessible health care services.

What does the mission statement mean by "forum?" The Community Resource Center is located at 122 W. Main St. (in the lower level) The "walk-in" center welcomes people, like you, who are interested in improving the quality of life in Manchester. The phone number is 428-7722 and the director is Dianne Schwab.

Margaret Mead once said, "Never DOUBT that a small group of thoughtful committed citizens can change the world. Indeed it's the only thing that ever has." You could be a member of that group.

Manchester, unlike many small communities, has, within its midst, a local viable organization. It is available to coordinate and collaborate with other groups and organizations in the community.

How can you help the Community Resource Center meet its' mission?

1. Consider a 1996 tax deductible donation to the CRC
2. Serve as a board member or standing committee member
3. Become involved as a volunteer in your community

WHAT IF -

- You need help with an aging parent?
- You are aware of a family who needs emergency food? You have a friend who would benefit from counseling?
- You have a friend moving

to Manchester and need information to send about our community?

- A member of your family needs a resume?
- Transportation is needed by a friend or family member?
- A list of summer activities would assist your summer planning?
- Your friends need lodging when they visit Manchester?
- Day care is needed. How do I find a list of providers?
- A shut-in needs home-delivered meals?
- You are in need of prevention and education information about alcohol, tobacco and other drugs?
- A family member or friend is looking for a job?

Contact the Community Resource Center, 428-7722 and you will receive answers to these questions and many more.

Your year-end donation to the Community Resource Center will directly benefit our local community and, if you itemize, provide you with a charitable gift tax deduction for the 1996 tax year.

Deborah Engelbert

Real Estate Sales Associate
The Charles Reinhart Co.



30 Million In Sales!

Office: 313-971-6070
Direct: 313-669-5897
Res: 313-475-8303
Fax: 313-747-7880

2452 East Stadium Blvd.
Ann Arbor, MI 48104

Reinhart
Charles Reinhart Company Realtors

Arend Tree Farms

Two locations to choose from:

¥ Brooklyn: 2 mi south on M-50 (517) 592-2006

¥ Chelsea: I-94 exit #156 west of Chelsea 475-7584

**LARGEST TREE FARMS IN
SOUTHEASTERN MICHIGAN
Specializing in Spruce &
Douglas Fir**

White & Scotch Pine also available

Open daily 9-5

Over 400 acres; 400,000 trees to choose from

ORTHODONTIST

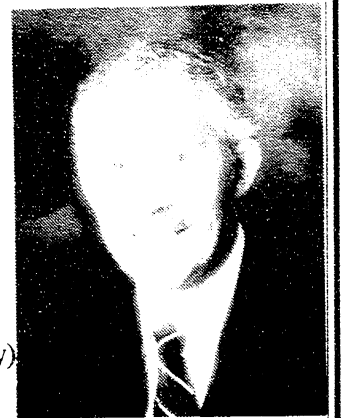
**RAYMOND P.
HOWE D.D.S., M.S.**

515 S. Main Street
Chelsea

18 yrs. Experience practicing
orthodontics

(no professional referral necessary)

475-2260



The Black Sheep Tabern

18 73

since 1873

Fromm

Live Band, Fri & Sat 9:30pm

Extended
Breakfast hours on Sat & Sun

NEW Hours:

Mon-Fri 11:30-10:00pm, Sat 8:00-10:00pm,

Sun 9:00-5:00pm

Classified

Services

Lost or Found a Pet? Call the Huron Valley Humane Society. 662-5585. tfn

Fielder Painting: Interior and exterior. Free estimates. Senior citizen discount. Phone 428-8506 tfn

Farmers' Sand and Gravel. We deliver and spread driveways. 475-8850 tfn

Benedict Painting: Call Chuck for free estimates. 15 years experience - interior & exterior painting. 517-536-4812 tfn

Alber Excavating - Sand - Gravel, basements, drainfields, topsoil, snow removal. 428-0865 tfn

Stump Grinding & Tree Removal Garden rototilling - Free estimates. Insured. R & L Tree Service 428-1675 Rich & Russ Lutton tfn



PREMIER CONTRACTING, Full service residential and light commercial builder. 428-9826. tfn

Snowplowing and Hauling. Yard, home, farm or construction clean up. Also field mowing, raking, & trimming. Senior discounts. 475-2189. 12/30

Topsoil, black dirt, sand, stone, gravel, fill dirt. Phone 313-475-8526. 1/6/97

Aiuto Auto Parts - Tecumseh. We do small engine repair. Get your snowblower tuned up for the '96/'97 season. Pick-up and delivery available (517) 423-8080 TFN

Manchester Electric, Inc. Contracting & In-home service 428-8243. TFN

TV - VCR Service. Knapp's TV & Repair. Pick up service at Kleinschmidt Hardware, 19870 Sharon Valley Rd., Manchester. Monday - Sunday 428-8337 or 517-592-2680. 12/19

Snow Removal - Parking lots, Driveways, Sidewalks, Salting. Insured. Call T & N Services, Inc. 428-7002. 12/19

If you demand excellence in you housecleaning projects, call 428-7366. Weekly, bi-weekly, and special cleaning projects. References available. 12/19

Day/Child Care

Opening for one child in my village home. Warm, family atmosphere. License #DF810067266 - Anne Kastanis. 428-9806 TFN

For Sale

Chest Freezer - 8.8 cu. ft. Kenmore - 6 mo. old \$225. 428-7398. 12/12

Moving, must sell. Dining Set - Thomasville. Table w/ leaves, 6 chairs, buffet, like new \$1,800. Desk and Buffet. Antique look w/ marble top. \$150 each. 428-7465. 12/12

Help Wanted

Pizza Makers and Drivers needed 10 am to 4 pm Mon-Fri \$5.50/hr. plus tips. Apply in person or Call Ollies Pizza 428-6543.

Third shift, premium pay. Hop-In. 10pm - 6am. Health Insurance, 401K, Tuition reimbursement, employee incentive program. Apply in person at Hop-In 100 E. Main. TFN

Dental Assistant wanted to join our friendly practice. 428-9019. TFN

BOOK MANUFACTURING

Braun-Brumfield, Inc. a leading book manufacturer in the Ann Arbor area has the following opportunities for motivated individuals who want to be a part of our team.

- **Finishing Trainee** - The right individual will be trained. 7 pm - 7 am, 3 7 4 days a week.
- **Forklift Operator** - Must have hi-lo experience. 7 pm - 7 am, 3 & 4 days a week.
- **Laminator - Operator** - Mechanical skills a plus., Midnight shift 11 pm - 7 am.
- **Plate Maker** - Experience in book manufacturing pre-press preferred. 7pm - 7 am 3 and 4 days a week.

We have a competitive compensation and full benefit package including medical/dental/ vision / life insurance and a 401 (k) savings plan. In addition, through our Employee Stock Ownership plan, you will become a company owner and share in company profits. Please apply in person or send resume to:

BRAUN - BRUMFIELD, INC.
100 N. Staebler
P.O. Box 1203
Ann Arbor, MI 48106

A smoke free work environment
EOE
12/12

Business Opportunity

Farmers Insurance Group is developing Insurance Agencies. We are interviewing individuals with degrees who want to develop their own business. Start part-time w/o giving up present employment. Call Dave Stanbury at (313) 665-4747 or 459-5494. 12/12 & 12/31

Work at home \$500 - \$800. Part time 10 - 15 hours a week. 810-447-2428. 12/19

Vehicles For Sale

1980 LeBaron, \$500 Firm. 428-8615. 12/12

Wanted

Small upright piano in good condition. Please Call 428-8265 after 4 pm. 12/12

CLASSIFIED RATE:

4.00 for the first 20 words,
10c for each add'l word.
Thank You's and Memorials are \$5.00 for the first 50 words.
Ads must be prepaid
AD DEADLINE IS 5:00 FRIDAYS
ADS received later than the established deadline will be subject to a \$200 fee

For Rent

Large ground floor 2 bedroom \$585 includes all utilities. No smoking or pets. 428-7173. TFN

Beautiful loft apartments. Downtown Manchester - central air, secured building, river view, hardwood floors. 2 bedroom \$585, no pets. Call 517-431-2008. TFN

Efficiency apartment for rent in Manchester, Includes all utilities. Large two bedroom upstairs apartment in Clinton. Call 517-522-4064. TFN

Manchester Apartments now accepting applications for 1 and 2 bedroom apartments. Call 428-9270 or TDD 800-760-1997. 12/19

13720 Horning Road, Brooklyn. Large 3 bedroom home, no pets. \$650/month. 517-764-0700. 12/12

Office space available downtown Manchester. Three rooms with reception area. Reasonably priced, utilities furnished. Contact - Jim Mann at 428-8388. 12/12

Manchester Woodhill Apartments now taking applications. Barrier Free available. Call Char at 428-0555 or our TDD# 1-800-649-3777. Equal Housing Opportunity. 1/2

Wanted to Rent

Non-smoking professional seeking 3 Br. apartment or house in Manchester Schools District. No pets Call 428-0207. 1/2



Stocking Stuffers

- Beanie Buddies
- Mini Books
- Tons of Toys
- Stickers
- Fun Jewelry
- Votive candles
- Mini Boxes
- Note pads
- Diaries
- Address Books
- Pocket Watches
- Hello Kitty
- Magnets

And stockings to stuff them in too!

Calamity Jane's
109 E. Main
428-1122
Thurs til 8 pm

Miscellaneous

Manchester Kiwanis Club have a perfect gift for Christmas gifts that are a keepsake; Manchester Coverlets, Hunter Green or Cranberry Red are available by calling 428-8976 or 428-7722. Cost is \$50. 12/12

Wedding Invitations at discount prices. Also graduation, anniversary, birth announcements. Hundreds to choose from. Express Graphics. Professional quality, affordable price. 428-1613. TFN

Lose up to 30 pounds in 30 days guaranteed 810-447-2425. 12/26

Jefferson Art Studio. Open Saturdays till Christmas 9am - 4pm 428-8861. 4371 Lima Center Rd. North of Pleasant Lake Road. 12/12

Pets

FREE - to a good home. AKC, registered German shepherds. Male & female. Good natured, 5 years old. Call 517-456-4571 12/12

Antiques

Manchester Antique Mall: 35 Dealers. Open 7 days 10-5. 116 E. Main. 428-9357. tfn

Notice of a Public Hearing

Manchester Community Schools' will hold a public hearing Monday, December 16, 1996 at Luther C. Klager Elementary School in the Multi-purpose room at 7:30 p.m. for the purpose of hearing comments form the community regarding continuation of the breakfast program at Luther C. Klager Elementary and Nellie Ackerson Middle School. 12/12

Prayer to St. Jude

St. Jude, may the Sacred Heart of Jesus be adored, glorified, loved, and preserved throughout the world now and forever. Sacred Heart of Jesus, pray for us. St. Jude, helper of the hopeless, pray for us. Amen. Say the prayer nine times a day. By the eighth day, your prayer will be answered. It has never been known to fail. Publication must be promised. JD

Discover the benefits of working with us.

At JAC Products, people are the most important part of our business, and we believe in rewarding them with more than just a paycheck. They have helped us set new standards for automotive supply products, and break many sales records for roof racks and other accessories.

HUMAN RESOURCE ADMINISTRATOR

The selected candidate will be responsible for the administration of our time keeping system, recruiting and prescreening of applicants, and processing legal documents (COBRA notices, I-9s, disciplinary warnings, etc.).

This individual will have a high degree of organization and administrative capabilities and excellent verbal and written communication skills. At least 2-3 years' experience in a like or similar position required.

MANUFACTURING/INDUSTRIAL ENGINEER

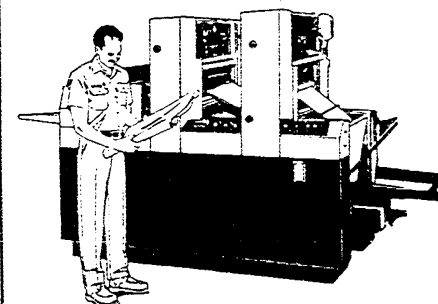
This position offers the opportunity for an innovative individual to utilize industrial engineering techniques (standards, plant/workplace layout, material handling, ergonomics) as well as develop and implement unique cost reduction ideas, equipment and fixtures.

Experience with robotics, injection molding, CAD and/or the automotive quality assurance programs a plus. A 4-year degree is highly preferred, along with a minimum of 0-3 years' work experience.

We will provide you with a salary commensurate with experience, comprehensive benefits, and an environment that encourages your personal and professional growth. For immediate consideration, please forward your resume and salary requirements, indicating position of interest, to: Human Resources Department, JAC Products, Inc., 1801 E. Ellsworth, Ann Arbor, MI 48108. An Equal Opportunity Employer.



THE MANCHESTER ENTERPRISE



- PRINTING
 - PHOTOCOPIES
 - MORE!
- SUPPORT YOUR HOMETOWN PAPER!**

109 E. MAIN ST. • MANCHESTER

(313) 428-8173

JCI Sells Plastics Container Division

continued from page 1

worldwide container company, but they did not currently own a plastics container division. "This is actually a good change, in that we won't be competing for resources," with the multitude of other divisions within Johnson Controls. JCI is a major supplier of automotive seating and interior systems, control systems and services for non-residential buildings, plastic packaging and automotive batteries. Their largest growth has been within the automotive systems groups. In recent months they had been considering a secondary stock issuance to help finance their acquisition of an automotive interiors supplier. This move will be avoided by the sale of PCD.

Mr. Hanno Fiedler, Chairman and CEO of Schmalbach-Lubeca, said, "The acquisition of PCD will help Schmalbach-Lubeca secure a major worldwide position in the fast-growing PET container segment. PCD enables us to participate in the important North American market and strengthens our established position in Europe. The combined quality and technology leadership will help us achieve future growth on a worldwide basis."

Village President Larry Bechtel noted, "My understanding from them directly, is that there will be no effect on the status of our industrial park. They hope to maintain all the jobs at status quo; in fact it may actually increase local jobs in the near future. I've been informed that this will be the US headquarters for Schmalbach-Lubeca."

So - the official word is that there are no big changes for now. Those who have experienced the sale of a subsidiary before, will be watching to see what the current, small changes, portend for the future.



**ROBERTS
GLASS**

WINDSHIELD REPAIR & REPLACEMENT
610 E. Industrial Dr. (313) 475-5811
Chelsea, MI 48118 FAX (313)475-5760

Treat Someone to Dinner
A Gift Certificate from Haarer's is a perfect Gift anytime

HAARER'S MEETING PLACE
233 E. Main 428-9500
Tues-Wed-Thurs 11 - 9 Fri & Sat 11 - 10

FODOR'S
Christmas Tree Farm

You cut or Fresh-cut
Fir - Spruce - Pine (8 varieties)
All Trees prepriced \$5 - \$75,
trees up to 16'ft.

Potted Trees - Roping - Wreaths - Gifts - Snacks
Free Wagon Rides - Animals - Animated Toy House
Santa will be here on weekends!

Saws & Tree Cleaning Provided
3360 Burtch Road,
3-1/4 mi. south of Grass Lake Traffic Light
open daily 10 til dusk • 517-522-4982
FREE Tree Wrapping w/this Ad

Looking for a Higher Yield Certificate of Deposit?

Then look to United Bank & Trust.

| | 9-Month CD | 18-Month CD | 27-Month CD |
|------------------|------------|-------------|-------------|
| \$10,000 & below | 5.50% APR | 5.75% APR | 6.00% APR |
| \$10,000 & above | 5.75% APR | 6.00% APR | 6.25% APR |

•• No minimum balance requirements ••

"At United Bank & Trust we strive to provide our clients with quality products and services to fit their financial needs. That's why we are excited about our new CD specials. These CDs offer a higher annual percentage yield than our traditional CDs and have no minimum balance requirements. This makes them the perfect fit for many investment needs."

- Earl M. Roehm, Executive Vice President, Personal Banking
To take advantage of this special offer, simply complete the coupon attached and mail it with your investment to:

UNITED BANK & TRUST

ATTN: M. DeShano

11839 Tecumseh-Clinton Road
Clinton, MI 49236

Amount Enclosed: \$ _____
Term Requested: _____ months

| | | |
|------------------------------|---------------------------|-------------|
| Applicant Name | Date of Birth | Soc. Sec. # |
| Co-applicant Name (if joint) | Date of Birth | Soc. Sec. # |
| Street Address | City | State Zip |
| Home Telephone Number | Business Telephone Number | |

AGREEMENT TO TERMS:
Under the penalties of perjury, I (we) certify that 1) the Tax Identification Number(s) on this form is (are) correct and 2) that I am (we are) not subject to backup withholdings under the Internal Revenue Code.

Applicant Signature _____ Co-applicant Signature _____

Your CD yield will be the current yield on the day we receive your check. For today's rate, or to speak to a Financial Services Representative, please call (517) 456-6048.

Or stop by one of our near by offices:

TECUMSEH LOCATIONS CLINTON OFFICE

Main Office
205 E. Chicago Blvd.
(517) 423-8373

11839 Tecumseh-Clinton Rd.
(517) 456-6048

Herrick Park Office
610 N. Evans
(517) 423-8373

West Chicago Office
1208 W. Chicago Blvd.
(517) 423-8373



Annual percentage yield as of 12/5/96 is subject to change at any time. Interest penalty will be charged for early withdrawal. For additional information please call (517) 456-6048.

Member FDIC



GEO

Don't get disturbed... See Tirb!

For New or Used Cars
See Charlie Dermyre
or Ray Tirb

TIRB

Chevrolet & Geo

Phone: (313) 428-8212 or (313) 428-8492
131 Adrian Street -Manchester, Michigan

**Shop Locally It
Will SAVE
You \$\$\$**



Make every gift special with Hallmark wrap and gift trims. We offer a wide selection of distinctive designs featuring rich colors and holiday images. Just looking at them is a treat.

**Wrap your gifts
in holiday splendor.**



Manchester Pharmacy

128 E. Main Mon-Fri 9 - 6:30 Sat 9 - 5

428-8393



CALAMITY JANE'S

HOLIDAY BANNERS
including
3 dimensional
Windsculpts!
We also have
poles and
brackets -
stop in while
they last



BEANIE BABIES
are Here!
They are the
hottest item
for kids .
for
Christmas
Gifts

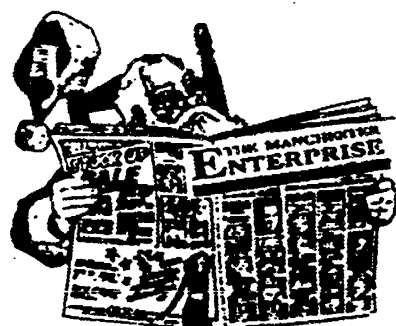


**Have a POOH
Christmas!**
Christmas Cards
Stickers
Ornaments
Wrapping Paper
Pooh Beanies
Books, Plush,
& more

109 E. Main St. ★ Mon - Sat 10 - 5, Thurs 10 - 8 pm Sun 12 - 5 ★ 428-1122

Fill out this form, send along a check for \$18 in Washtenaw County or \$20 for out of county or out of state, and we'll send a Gift Certificate to your recipient.

Give
A Gift
Subscription to
**THE
MANCHESTER
ENTERPRISE**
A Great Holiday
Gift



TO:

NAME:

ADDRESS:

CITY, STATE, ZIP:

This Gift Subscription is From: