

THE MANCHESTER ENTERPRISE

Boldly Going Where No Newspaper Has Gone Before

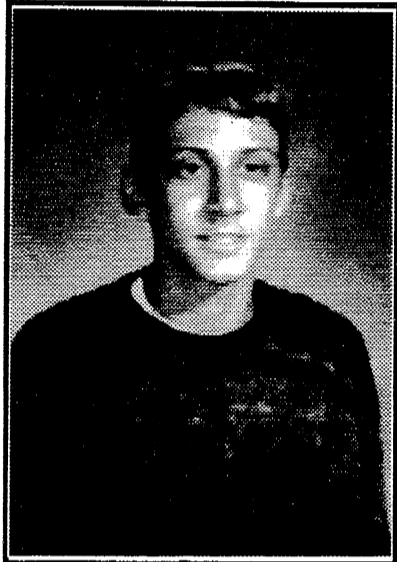


130h Year -- No. 7

Manchester, Michigan

40¢ per copy

Pat Chapin places 3rd in the World



Manchester High School's very own Pat Chapin flew to Dallas, Texas Friday, November 22 to attend "Magic: The Gathering", a tournament of "Magic."

"Magic" is a card game in which an unlimited number of "wizards" play, collecting cards much like baseball cards are collected. "Magic" can be purchased at most stores, and one never knows what he or she may receive. When playing, a spell card or a creature card can be used to counteract the other player's move.

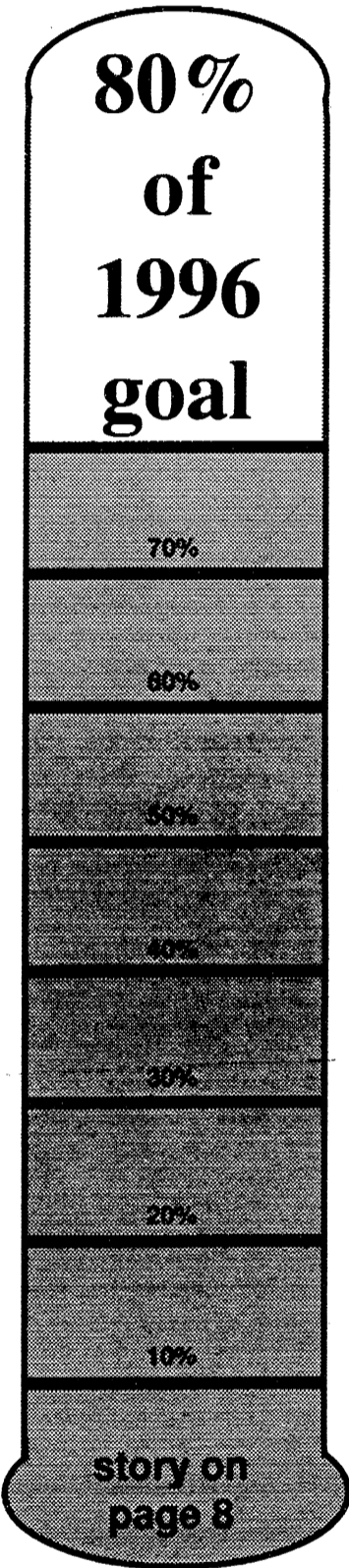
Pat Chapin competed in the Junior Division in Dallas, taking 3rd in the world, winning \$5,400 for college. The first place winner in the Junior Division received \$16,000. There is also an adult division, in which the 1st place winner took \$26,000 cash.

Pat plans to attend other "Gatherings" in Long Beach, Chicago, New York, Paris, and many more. Congratulations, Pat and good luck in your future tournaments!!!

- Lacea Curtis

United Way at

80% of 1996 goal



Stacey Burmeister Named November Student of the Month



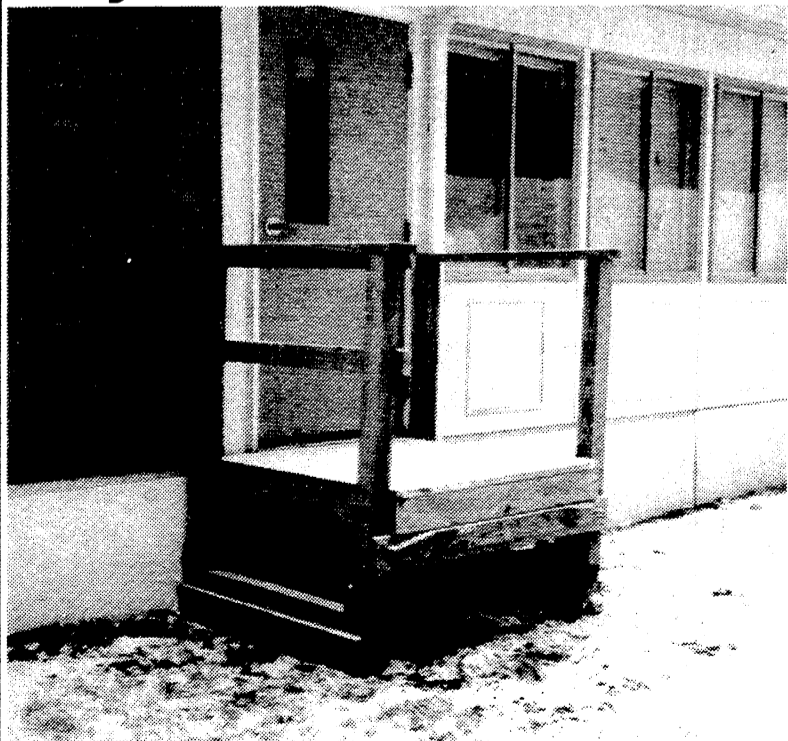
Stacey Burmeister, the daughter of Debbie and James Burmeister, has been selected as the November "Student of the Month" by the Manchester Optimist Club. Stacey is very involved in school and community activities. Academically, she is a member of the National Art Honor Society, and has passed all subject areas of the MEAP and High School Proficiency Test. She has also won the Scholar Athlete award, the Softball Academic All-State award, and the Presidential Academic Fitness Award. She has also visited Germany as an exchange student.

Stacey has also remained active in 4-H, cheerleading, and church activities throughout her high school years. She has won numerous awards in 4-H including Best of Show art award for three years, and is an important member of the 1995 and 1996 district championship equestrian team. For the fourth consecutive year, Stacey is a member of our cheerleading team which won the state championship at the Michigan Cheerleading Coaching Association C/D competition. Last year, she was also named the team's MVP.

For three years Stacey has played outfield for the softball team. Finally, she's remained active in her youth group at Bethel Church for the past four years, presently serving as secretary for the group.

Outside of the school, you might find Stacey working with horses or painting business signs for S-K Sales. Her future plans have narrowed to a career in art therapy, art design, horse management, or veterinary.

Mysterious Hit & Run



The portable classroom which houses the music room at Klager School lost the steps to its rear exit over the weekend. Police are investigating the accident.

Please deliver this copy of THE MANCHESTER ENTERPRISE to--

Manchester Library
P.O. Box 135
Manchester MI 48158

Inside This Issue

Community Calendar.....	Page 2
Village Hires New Planner.....	Page 3
Editorial Opinion.....	Page 4
Local Government.....	Page 5
Church Page.....	Page 6
Announcements.....	Page 7
United Way.....	Page 8
Organizations.....	Page 10
Senior Citizens.....	Page 11
School.....	Page 12
Classifieds.....	Page 14

Community Calendar

Scheduled Meetings

Bridgewater Twp.
 Carol Peacock, Supervisor
 517/456-7303
 Karen Weidmayer, Clerk
 13360 E. Austin
 428-8641

COMMUNITY EVENTS

Monday

1st Monday: Manchester Township Library Board meets 7:30 pm.
 1st Monday: Manchester Masonic Lodge, business meeting 7:30

Monday: Village Planning Commission

2d Tuesday: Manchester Area Senior Citizens, 9:30 am
 2d Tuesday: 20th Century Club, 7:30 pm.

2d & 4th Tuesdays: Shakespeare Club, 2:00 & 4:00
 3d Tuesday: Manchester Historical Society, 7:30 at Blacksmith Shop

4th Tuesday: La Leche League 10:00 am call 428-8831 for location and info.

4th Tuesday: Klager PTO 6:30 PM at the school. Call 428-8321 for info.

4th Tuesday: Manchester Township Planning Commission

Every Tuesday: Boot Stompers meet at Emanuel Church 7-9 PM

Every Tuesday At Your Home: RECYCLE - put containers at curb by 7:30 AM

Wednesday

1st Wednesday: Raisin Valley Land Trust, at the Blacksmith Shop, 7:30 PM

1st Wednesday: Veterans of Foreign Wars, 7:30 pm

2d Wednesday: American Legion Auxiliary 7:30 PM

2d Wednesday: Manchester Recreation Task Force, 7:30 at Blacksmith Shop

3d Wednesday: Manchester Men's Club 7:30 PM

3d Wednesday, WIC Program, 9:30-3:00 Senior Citizens Bldg.

3d Wednesday: Bridgewater Township Board, 7:30 PM

4th Wednesday: Manchester Township Fire Department meeting, 7:30 PM

Every Wednesday: Community Band - 7:30 PM

Thursday

1st Thursday: Sharon Township Board meets 8:00

1st Thursday: American Legion Post #117, meets 7:30

2d or 3d Thursday: Sharon Township Planning Commission

3d Thursday: Cub Scout Pack Meeting, 7:00 pm

4th Thursday: Community Resource Center Board, 7:30

Every Thursday: AWANA 6:30-8:30 for kids ages 4-6th grade at Community Bible Church

Friday

Every Friday: AA meetings 7:00 PM At Emanuel Church Kitchen. All are welcome; for more information call Church office 428-8359

Notices

1st & 3d Saturdays: Manchester Kiwanis meets at Whistle Stop, 7:30 AM Breakfast; 8:00 AM Business meeting

Coming Events

Saturday, December 7: SCOUTING FOR FOOD 8 AM

Wednesday, December 11: Manchester Family Services Christmas Shop

Sunday, December 15: Santa Claus Comes to Manchester - watch for details

The Community Calendar is a regular feature of the Enterprise. If your meetings or special events should be listed here, please call us at 428-8173.

Hours:
 Mon-Fri 5-8 pm
 Sat 9-4, Sun. 12-6

Now Open

Support The Men's Club

Located on Adrian St. in Tirb's Chevrolet lot



Trees
 \$20 - \$25

Christmas Tree Sale

100% of proceeds go back into the community

Dial-a-Garden

971-1129



Dial-A-Garden, a service of the Washtenaw County/Michigan State University Extension Service, is a system of pre-recorded gardening messages. The feature has a format which lets callers with a touch-tone phone select which message they wish to hear. The messages are changed monthly. To contact Dial-A-Garden, call 971-1129. Enter one of the 3 digit codes listed below. Persons with a rotary phone should call 971-0079 and hold on the line for the operator.

December 1996

- 101 Buying a new houseplant
- 102 Growing cyclamen
- 103 Freesia
- 104 Caring for holiday plants
- 105 Why won't houseplants flower?
- 201 Pest control for houseplants
- 202 De-icing sidewalks
- 203 Live Christmas tree
- 204 Choosing a Christmas tree
- 205 Keep your Christmas tree fresh
- 301 Winter protection of trees and shrubs
- 302 African violets
- 303 Salt injuries on plants
- 304 Snow mold
- 305 Making a grape vine wreath
- 401 Recycle your Christmas tree
- 402 Indoor light gardening
- 403 Using wood ash
- 404 The MSU soil test
- 405 Plant and insect diagnostic service

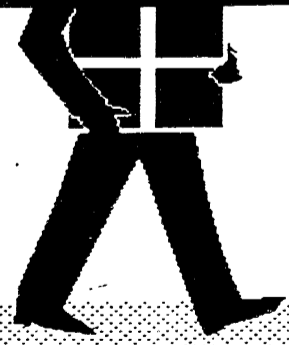
Ship Your Packages for Christmas Early with Us!

With our Package Express Center located right here in the store, you can "Ship Where You Shop!" Just bring it along with your shopping list and we'll take care of the rest.

We have supplies - to help with your shipping needs.

Manchester Pharmacy

128 E. Main 428-8393
 Mon-Fri 9-6:30 Sat 9-5



3972 to: Manchester Enterprise, P.O. Box 37, Manchester, MI 48158.

The Manchester Enterprise, Inc. (313) 428 - 8173

Editor & Publisher
 Teresa M. Benedict

Production Manager
 Marsha Johnson Chartrand
 Lois Hochstetler, staff writer
 Julie Schaible, accounting
 Andy Supers, graphic artist

One-year subscriptions are \$18 within Washtenaw County, \$20 outside the county. Deadline for display ads, photos, classifieds and news articles is Friday at 5:00 p.m. The Manchester Enterprise. No part of this publication may be used without the written permission of the publisher.
 © 1996 The Manchester Enterprise

The Second Front Page Manchester Plans its Future

Village Hires Planning Consultant Firm

The Village of Manchester has signed a contract with Carlisle & Wortman, an Ann Arbor firm of Community Planners and Landscape Architects, to provide planning services as the Planning Commission drafts a new zoning code to replace their existing code, which was adopted in 1984.

Carlisle & Wortman are no strangers to the Village of Manchester, having worked with the General Development Plan (GDP) in 1982. They were one of three firms who submitted bids for the planning services. Also submitting proposals were Birchler-Arroyo Associates of Berkley, and Don Pennington of Ypsilanti. Both Birchler-Arroyo and Pennington currently work with the townships surrounding the Village.

The project of drafting a new zoning code for the Village will be overseen by the Manchester Village Planning Commission, headed by John Hinkley. Carlisle & Wortman was selected for recommendation to the Council by Planning Commission after a careful review of the three proposals submitted.

Hinkley indicated that Carlisle's "leading edge," was in their familiarity with Manchester, having completed their Master Plan three years ago. They are also a local firm, who has dealt with other local municipalities, including Saline.

"First and foremost, we're looking for help in updating our zoning code," explained Village Manager Jeff Wallace. This sentiment is echoed by Hinkley. "We have been doing it ourselves, on and off, for three or four years. It was becoming increasingly difficult to work within everyone's schedules. With the rapid growth being experienced in the Village and its surrounding areas, the Planning Commission would also like some assistance in planning future integration, especially in the commercial districts. And rezoning requests continue to be submitted within the village limits and nearby.

The Zoning Code is the biggest chapter of the ordinance book. And one of the most complex. "It reads like a legal textbook," explained Wallace. "One thing the Planning Commissioners want is to make it more user-friendly," including graphs, maps and illustrations to replace or supplement the dry text. "We would also like to have a defensible ordinance for future use," adds Hinkley.

The services of a community planning firm will not only help to do this, but with their range of experience, they can advise the Commissioners and the Village Council on how other

villages have met similar challenges.

Challenges? It may be wondered what challenges the Village faces in the 1990's. Commercial property use is one concern. Where should commercial property be located? What should be avoided?

Currently, the Village has the two-block Central Business District, as our downtown commercial district. Yet, two blocks further west there are additional commercial settings. Should the same rules apply to each commercial setting? "We want to keep our CBD vital for the future," says Wallace. Yet, encouraging growth is healthy. So where do we want this growth to happen, so it helps to retain the stability of our downtown area?

Then there is the challenge of industrial property. "There is no more industrial property in the Village," states Wallace. And the townships don't normally zone property for industrial use. Industrial businesses are an important part of the

area's growth. Should we seek further industrial growth? And, once again, where?

Of course, the residential growth is the most important aspect of all of this, and the basis for the changes we want to make. Residences are a reflection of the community's personality. Many would like to retain the "small town" look and atmosphere we treasure here in Manchester. Yet, in the past ten years the Village and surrounding townships have seen tremendous change in our residential look. Apartment complexes, a Manufactured Housing community, and condominiums were just "ideas" ten years ago. Suddenly, here they are as a part of the village landscape.

Here, again, the Village faces challenges. There are still several large parcels of vacant land within the village limits. Do we want to promote "cookie cutter" residential growth? How can these parcels be used creatively? Do we want to incorporate some of the natural features of these properties that may not

fit in to standard zoning ordinances?

A new, more comprehensive zoning code will give the Village a tool for managing the growth which can be expected to accelerate in the coming years. Making it easier to read, understand and use, will assist not only residents and developers, but also those who have to administer the code. Hinkley considers this as "developing a layman's ordinance," which will provide solid groundwork for future controlled growth in the Village.

All these questions and more will be presented to Carlisle & Wortman for their consideration over the next twelve months. From their work with other communities, the firm has many ideas which will be discussed with the Planning Commission during their contract term with us. They will also act as advisors to the Planning Commission if major site plans come up; using their expertise to review more complex cases.

At Monday's Village Council meeting, the Planning Commission's recommendation to hire Carlisle & Wortman as the Village Planners was approved by Council, and the contract submitted by Carlisle & Wortman was also adopted. The contract will begin on January 1, 1997. Then will begin a series of meetings to begin updating the ordinance, then reviewing their draft ordinance.

Hinkley concludes, "Once we have worked through the entire process, we will hold a public hearing to present the zoning ordinance, hopefully within twelve months." Final revisions and corrections to the ordinance will then follow; and the need for further services from Carlisle & Wortman will be evaluated at the end of the contract.

The coming year will be one of learning and planning for the future of Manchester. Maybe by this time next year we will have a better idea of what our Village will look like 20 years from now.

-Marsha Johnson Chartrand

**IT PAYS TO
ADVERTISE IN
The
Manchester Enterprise**

**NEW &
USED CAR
SALES**
Stop in
**Take advantage
of the rebates on
model year-end
Clearance Prices!**



Neil Horning
475-1301

THE AWARD WINNING DEALER
PALMER
Michigan's Oldest Ford Dealer



Gifts for:

Her

- Jewelry
- Potpourri
- Candles
- Banners
- Note Cards
- Santas
- Winnie the Pooh
- Photo Frames
- Framed Prints
- Nightshirts
- Wall Accessories
- Hand Cream
- Accent Furniture
- Handbags
- Wind Chimes
- Decorative Rugs
- Trinket Boxes

Him

- Stress Balls
- Attache Cases
- Dutchman Sweatshirts
- Fishing Ornaments
- Golfing Goodies
- Hunting items
- Framed Prints
- Trains, Planes, Cars,
& Tractors
- Pens & Note pads
- Key Chains
- Pewter Crosses
- Signs
- Photo Frames
- Decorative Rugs
- Banners
- Wind Chimes

Kids

- Beanie Buddies
- Stuffed Animals
- Puzzles
- Toys Galore
- Waistbags
- Jewelry
- Diaries
- Journals
- Mickey Moose
- Winnie the Pooh
- Hello Kitty
- Keroppi
- Pillow Buddies
- Stickers
- Dutchman
- Shirts, Shorts,
Sweatshirts, & Bags

Stocking Stuffers for Everyone too!

**Why fight the crowds when you
can shop right here in town!**

CALAMITY JANE'S

109 E. Main ★ 428-1122

Extended Holiday Hours:

Mon - Sat 10 - 5, Thurs 'til 8pm and Sun 12 - 5



Editorial / Opinion Page



Out & About

by gar

gar is on the road again, down Texas way.

Some interesting observations while traveling. Drivers are a wild bunch, and seem to travel in packs, not unlike wolves running in the wild, or a gaggle of geese flying the skies of Manchester. One daring leader forges ahead, testing the highway speed limit and road conditions. Those following seem always to be vying to take the lead and outdistance the others.

Strange as it may seem, when rain falls or light snow begins, the pack drivers are wont

to panic. Brake lights glare ahead, quick steering movements prevail and driving tension mounts. Drivers' courage rapidly diminishes along with their skills and judgement. The autos, some trucks, and other vehicles invade the median area or the shoulders of the road.

It is during these occasions that gar realizes his declining years might be shortened further. Another driver's ability (or lack thereof) may endanger the lives of many others on the highway.

Be careful, the life you save may be your own.

The Manchester Enterprise
welcomes letters to the Editor, Guest Editorials, and your comments, suggestions and opinions.
We ask that all letters submitted for publication be signed!
Should there be extenuating circumstances for withholding your name, we will give that full consideration.
We reserve the right to edit letters for publication

Village of Manchester
To Whom It May Concern;
Have been meaning to write ever since Veteran's Day when I saw your very gratifying display of patriotism. Was traveling from Detroit to Jackson, admittedly not a great distance but I did pass through several townships. Most had their normal, everyday flag display but none remotely compared to your "wall to wall" display of flags down the main street.

This was very heartening to this WWII veteran who has watched once patriotic holidays degenerate into glorified sales days by practically all retail outlets.

Thanks very much and I feel that if you can take the time and effort to put on a patriotic display then I should take time to write.

Thanks Again,
John S. Stout
12219 Stout
Detroit, MI 48228

Pink's Opinion

Dear Gar,

You brought out some important points in your article last week. You asked the question, "How far is too far?" For every person the answer is different. I know when I went too far and fell off the edge. That was about three years ago when I woke up in JDC, juvenile detention center. My actions led to my incarceration and only my own effort got me out and back into society. That was in no way the real punishment. The mental anguish and depression which forced the necessary changes to take place were the hardest part of all.

People were there to support me, of course; but unlike before, I could not turn to any of them for answers. Until that time I really never learned to deal with such feelings because of overprotection. That is what hurt me in the end.

In your closing paragraph you said, "We do not want you to fall, we do not want you to get hurt..." I am sorry, maybe I am stupid but is that not how you learn? If you burn your hand on the stove, you won't repeat that action because the burn HURTS. Cause and effect, get it?

If one walks too close to the edge because of curiosity and starts to fall then is pulled back, what was learned? If one falls and hurts their arm or leg they learn that falling is not a pleasant experience. More than likely the next time they won't walk so close to the edge.

If alcohol, tobacco, drugs and testing society's parameters is part of the learning experience, then stop interfering with the lesson. If one does not have the chance to find where their edge is located and how far is really too far - until they leave for college or move out - who will be there to counsel them? Falling is inevitable. If one does not learn to handle such situations while they're young how are they ever going to pass the final test, life? (aka the real world)

ROBERTS GLASS
WINDSHIELD REPAIR & REPLACEMENT
610 E. Industrial Dr. (313) 475-5811
Chelsea, MI 48118 FAX (313)475-5760

Stop in NOW - Pick out those special gifts you need for Christmas and put them in Lay-A-Way
It's a Win-Win way to Shop at
CALAMITY JANE'S
109 E. Main ★ 428-1122
Extended Holiday Hours: Mon-Sat 10-5, Thurs 'til 8 PM and Sunday 12-5
Lay-A-Way is the best way to get the right gift while the selection is at its best!

Arend Tree Farms
Two locations to choose from:
¥ Brooklyn: 2mi south on M-50 (517) 592-2006
¥ Chelsea: I-94 exit #156 west of Chelsea 475-7584
LARGEST TREE FARMS IN SOUTHEASTERN MICHIGAN
Specializing in Spruce & Douglas Fir
White & Scotch Pine also available
Open daily 9-5
Over 400 acres; 400,000 trees to choose from

Frey's Tree Farm
15356 Kendall Rd. 428-1425
Acres & Acres to choose from
Bring a Saw - ours may be busy

Black Hills \$22
Blue Spruce \$22
Douglas Fir \$22
Frasier Fir \$22

Open daily after Thanksgiving
Bring this coupon and get \$2 OFF

Sutton Insurance Agency, Inc.
136 E. Main St., Manchester, MI 48158
Manchester's Independent Agency
AUTO • HOME • FARM • LIFE
HEALTH • DISABILITY
"We Take Pride In Our High Level Of Quality Service"
M-T-W-F 9 - 4:30, Th 9 - noon Appointments Also to Fit Your Schedule
Specializing in DISCOUNTED AUTO INSURANCE
428-9737

Local Government

NOTICE TO RESIDENTS AND BUSINESS OWNERS VILLAGE OF MANCHESTER SIDEWALK SNOW AND ICE REMOVAL ORDINANCE

REMOVAL OF SNOW AND ICE. THE OCCUPANT OF ANY PREMISES, OR THE OWNER OF ANY UNOCCUPIED PREMISES OR REAL PROPERTY, IS REQUIRED TO KEEP THE CONSTRUCTED SIDEWALKS IN FRONT OF, OR ADJACENT TO SUCH PREMISES CLEARED FROM SNOW AND ICE WHICH WILL IMPEDE PASSAGE ON SUCH SIDEWALKS.

(1) EXCEPT AS PROVIDED IN SUBSECTION (3) HEREOF, SNOW AND ICE SHALL BE SO REMOVED FROM SIDEWALKS IN ALL BUSINESS DISTRICTS BY FOUR (4) BUSINESS HOURS AFTER THE CESSATION OF ANY FALL OF SNOW, SLEET, OR FREEZING RAIN, OR BY THE BEGINNING OF BUSINESS HOURS OF THE NEXT DAY FOLLOWING SUCH FALL, WHICHEVER PERIOD IS SHORTER.

(2) EXCEPT AS PROVIDED IN SUBSECTIONS (3) OR (4) HEREOF, SNOW AND ICE SHALL BE SO REMOVED FROM ALL RESIDENTIAL SIDEWALKS WITHIN TWENTY-FOUR (24) HOURS AFTER THE CESSATION OF ANY FALL OF SNOW, SLEET, OR FREEZING RAIN.

(3) IN THE EVENT SNOW AND ICE ON A SIDEWALK HAS BECOME SO HARD THAT IT CANNOT BE REMOVED WITHOUT THE LIKELIHOOD OF DAMAGE TO THE SIDEWALK, THE PERSON RESPONSIBLE FOR ITS REMOVAL SHALL, WITHIN THE TIME REQUIREMENTS OF SUBSECTIONS (1) OR (2), HAVE ENOUGH SAND OR OTHER ABRASIVE PUT ON THE SIDEWALK TO MAKE TRAVEL THEREON REASONABLY SAFE. SNOW AND ICE SHALL THEN BE REMOVED AS SOON AS IT CAN BE ACCOMPLISHED WITHOUT THE LIKELIHOOD OF DAMAGE TO THE SIDEWALK.

(4) **EXEMPTIONS.** IN RESIDENTIAL DISTRICTS ONLY, PERSONS WHO, FOR REASONS OF INFIRMITY, BELIEVE COMPLIANCE WITH SUBSECTIONS (2) AND (3) WOULD CAUSE UNDUE HARDSHIP, MAY FILE A REQUEST FOR EXEMPTION WITH THE VILLAGE CLERK. THE CLERK SHALL APPROVE OR DISAPPROVE THE REQUEST ACCORDING TO GUIDELINES ADOPTED BY COUNCIL. IF APPROVED THE VILLAGE MAY THEN REMOVE SNOW AND ICE FROM THESE SIDEWALKS AT A COST TO BE ESTABLISHED BY COUNCIL RESOLUTION, BASED ON LENGTH, IN FEET, OF SIDEWALK.

5) **FAILURE TO COMPLY.** IF THE PERSON RESPONSIBLE FOR THE REMOVAL OF SNOW AND ICE FAILS TO COMPLY WITH THE REQUIREMENTS OF THIS SECTION, THEN THE VILLAGE MAY REMOVE THE SNOW AND ICE, AND THE COST THEREOF MAY BE COLLECTED AS A SINGLE LOT ASSESSMENT UNDER CHAPTER 3, SECTION 1.85 OF THIS CODE. FURTHER, SUCH RESPONSIBLE PARTY SHALL BE LIABLE TO THE VILLAGE FOR ALL LOSSES TO THE VILLAGE OR RECOVERIES FROM THE VILLAGE FOR DAMAGES TO PERSON OR PROPERTY OF OTHERS CAUSED BY THE FAILURE OF SUCH RESPONSIBLE PARTY TO SO REMOVE ALL SNOW AND ICE ACCUMULATIONS IN ACCORDANCE WITH THIS SECTION.

12/5, 1/2/97

APPROVED PROCEEDINGS MANCHESTER VILLAGE COUNCIL

NOVEMBER 18, 1996

The regular meeting of the Manchester Village Council was called to order at 7:00 PM by President Becketl. Council members present: Ames, Becketl, Conaway, Marshall, Vought. Absent: Brooks, Mahony. Also present: Clerk Tucker, Manager Wallace, Sgt. Haensler-WCSD, Linda Mussio.

The minutes of the November 4, 1996 regular meeting were approved as presented on a motion by Marshall, support by Vought. Vote: Ayes-all.

The proceedings of the November 4, 1996 regular meeting were approved as presented on a motion by Conaway, support by Ames. Vote: Ayes-all.

The agenda was approved as amended on a motion by Marshall, support by Conaway. Vote: Ayes-all.

SHERIFF REPORT - Motion by Ames, support by Conaway to accept the October, 1996 Sheriff Report as presented. Vote: Ayes-all.

DRAFT OF SURVEY - Sgt. Haensler went over the draft of the survey that the Sheriff Dept. would like to send to some of the residents of the village, asking for their participation in determining areas of concern. **RESPONSE TO MUSSIO LETTER** Council addressed each item listed in Linda Mussio's letter dated October 20, 1996 concerning truck traffic on Morgan Street and other problems with Tower Automotive.

Linda was advised that any time anyone writes a letter to Council it is always included in packets and acknowledged and/or discussed at the meeting. It does not necessarily have to be on the Agenda separately. Sgt. Haensler will meet with Linda to explain her rights as a citizen to lodge a formal complaint against a truck driver. Linda presented Council with a letter from her expressing her dissatisfaction with the response to her requests. She would like it known that she is not the only resident concerned with this issue and asked if anyone had talked to other residents. Wallace stated that he has had conversations with others in the area and that their responses were more positive than Linda's.

Linda thanked Council for their time but did not like their decision.

Motion by Becketl, support by Marshall to allow the Planning Commission to hire a recording secretary, amount not to exceed \$25 per meeting. Roll Call Vote: Ayes-all.

RESOLUTION APPROVING JOB DESCRIPTIONS - Motion by Becketl, support by Ames to adopt the resolution to adopt job descriptions as presented. Vote: Ayes-all.

Motion by Becketl, support by Vought to adjourn at 9:30 PM. Vote: Ayes-all.

Karen Tucker
Village Clerk

The Many Sides of the Classifieds

Whether you're buying, selling or searching, everything you need is right at your fingertips.

call 428-8173 to place your ad today!

VILLAGE OF MANCHESTER Planning Commission Meeting

Tuesday, December 10,
1996 7:30 p.m.

AGENDA

1. Call meeting to order
2. Approval of agenda
3. Approval of minutes of previous meeting
4. Public participation
5. Reports from Administration
6. New business
 - A. Discuss hiring Recording Secretary
7. Old business
 - A. Discuss Mobile Home Park re-zoning request
8. Adjourn

PROPOSED SYNOPSIS

Special Meeting - Manchester

Township Board

Saturday, November 23,
1996:

The meeting began at 1:30 PM. The purpose of the meeting was to conduct a tour of township roads and neighborhoods. Board members present: Widmayer, Turk, Mann, Hakes. Absent: Macomber. Also present: Maxine Widmayer.

All present boarded one vehicle, with the tour beginning at 1:35 PM. Thirty-seven miles of township roads were covered, observing the conditions of the roads and neighborhoods. Stops were made at the Lindsey property and Reynolds Corner Cemetery.

There were no decisions made, nor actions taken by the Board. The meeting concluded at 4:15 PM when the tour ended at the township hall.

Submitted by Kathleen M. Hakes, Clerk

Approved by Ronald E. Mann, Supervisor

EVERGREEN WREATHS, BLANKETS ROPING MADE FRESH DAILY	
6 ft. BLANKETS with Red Ruscus Cones & Ribbons	\$35.00 & up
3 ft. BLANKETS EVERGREEN CEDAR OR PINE ROPING.....	\$25.00 & up 50 FT. COIL \$30. ⁰⁰ OR .69 ¢ ft.
 MIXED EVERGREEN WREATHS  WIDE VARIETY	
2 ft. Untrimmed..\$7.50	2 ft. Trimmed..\$11.00
3 ft. Untrimmed..\$17.50	3 ft. Trimmed..\$22.50
4 ft. Untrimmed..\$27.50	4 ft. Trimmed..\$32.50
Large Variety of POINSETTIAS \$3.50 & up	Fresh Xmas Greens & Candle Arrangement \$15.00 & up
CHELSEA GREENHOUSE 475-1353 7010 Lingane Rd. Chelsea Charter Member F.T.D. Member Teleflora Member A.F.S. Member Redbook Serving the area since 1901	
Open Monday - Saturday 8am-5pm Sunday 1-5 'til Christmas  MANCHESTER	

GUN SHOW

Saturday, December 7th 9am - 5pm
Sunday, December 8th 9am - 4pm

Washtenaw Farm Council Grounds
5055 Saline-Ann Arbor Rd.

For more information
Call 810-227-1637

Church Page

BAPTIST CHURCHES

NORTH SHARON BAPTIST CHURCH—Bobby D. Toler, Pastor, Tim Butterfield, Associate Pastor, Sylvan & Washburn Rds- 428-7222; SS 10:am; Morning Church 11:am; Eve. Church 7:pm; Weds. Bible Study & Youth Mtg 7:pm

VICTORY BAPTIST CHURCH—Jon King, Pastor; 423 S. Macomb, 428-7506, Sunday School 10:00 a.m.; Morning Worship 11:00 a.m.; Evening Public Bible Class 6:00 p.m.; Wednesday Praise and Prayer 7:00 p.m.

CATHOLIC CHURCH

ST. MARY CATHOLIC CHURCH—Rev. Francis J. Murray, Pastor; Telephone 428-8811; Masses: Monday thru Wednesday, Friday 8:30 a.m., Thursday 7:00 p.m., Saturday 5:00 p.m., Sunday 8:30 a.m. and 10:30 a.m.

EPISCOPAL CHURCH

ST. BARNABAS EPISCOPAL CHURCH - Rev. Jerrold F. Beaumont, OSP, MTh, DD; 20500 Old US-12; Chelsea; Telephone (313) 475-8818; Worship Sundays at 10:00 AM

LUTHERAN CHURCHES

OUR SAVIOR LUTHERAN CHURCH (Lutheran Church Missouri Synod) Rev. Dale Grimm, Pastor - 1515 South Main Street (M-52), Chelsea. Telephone 475-1404; Heritage Service 8:15, Contemporary Worship 10:30 AM Sundays

ST. JOHN'S LUTHERAN CHURCH—Rev. Erling Aaserud, Pastor Austin Road, Bridgewater; Telephone 429-7434; Sunday School 9:15 AM; Worship 10:30. Various mid-week & Bible study groups.

ST. THOMAS LUTHERAN CHURCH—Rev. John Kayser, pastor; 10001 W. Ellsworth Rd., (5miles North and 6-1/2 East of Manchester); Telephone 663-7511; Schedule: Sunday School 9:30 AM; Worship 10:45

ZION LUTHERAN CHURCH—Pastor David Hendricks; 3050 S Fletcher Road, Chelsea; Church Office 475-8064, Susan Wiley, Secretary 428-7268. Sunday School 9:00AM; Worship 10:15 AM

UNITED METHODIST CHURCHES

MANCHESTER UNITED METHODIST CHURCH—Rev. Thom Davenport, Pastor; 501 Ann Arbor St. Phones: Parsonage 428-8013, Church 428-8495. Worship 10:30 AM

SHARON UNITED METHODIST CHURCH—Rev. Peggy Paige, Pastor, Corner of M-52 and Pleasant Lake Roads; Church- 428-7714, Parsonage- 428-8430; Sunday School 10:00 AM, Worship 11:00 AM

MORMON CHURCH

CHURCH OF JESUS CHRIST OF LATTER DAY SAINTS (MORMONS)—Gary Spooner, Branch Pres; 1330 Freer Rd, Chelsea; 475-1778; Sacrament 9:30 am; Sun. School, 10:40; Relief Soc, Priesthood & Youth 11:40

NON-DENOMINATIONAL CHURCHES

COMMUNITY BIBLE CHURCH — Pastor Jody Riethmiller; 8400 Sharon Hollow Rd. Telephone 428-8709; Worship Service 10:00 AM; Sunday School 11:30 AM; Wednesday Bible Study & Prayer, 7:30PM. All are welcome!

IRON CREEK COMMUNITY CHURCH—Tom Butterfield, Pastor; English and Sharon Hollow Roads; Sunday School 10:00 AM; Morning Church 11:00 AM; Sunday Evening 7:00 PM

CLINTON ASSEMBLY OF GOD—Rev. Richard Coury; 13300 Clinton-Manchester Road; Phone 517-456-7510; Sunday School 9:30AM; Worship 10:45; Sunday Eve 6:30; Weds Prayer, Bible Study, Youth 7: PM

UNITED CHURCH OF CHRIST

BETHEL UNITED CHURCH OF CHRIST—Rev. Richard E. Hardy, minister, 10425 Bethel Church Road at Schneider Rd.; Phones: Parsonage & Church 429-7155/428-8000; Church Service 9:30AM

EMANUEL UNITED CHURCH OF CHRIST—Rev. Dr. Vincent Carroll, Pastor, Phone: 428-8359; Sunday School 9:15 AM, Worship 10:30 AM, Fellowship 11:30 AM

ST. JOHN'S UNITED CHURCH OF CHRIST—Rev. Dr. Nancy M. Doty, Pastor; 12376 Waters Road, Waters and Fletcher Roads, Rogers Corners; Worship and Sunday School 9:30AM

UNITY CHURCH

UNITY CHURCH OF JACKSON—3385 Miles Road, Ackerson Lake, Jackson, MI, 517-764-6900; 11:00 a.m. Sunday Services and Sunday School.

COMMUNITY BIBLE CHURCH

Thursday, December 5: AWANA begins 6:30-8:30 PM

Sunday, December 8: Worship Service 10:00 AM; Sunday School 11:30 AM.

MANCHESTER UNITED METHODIST CHURCH

Wednesday, December 4: 6:30 p.m. DISCIPLE Bible Study

Thursday, December 5: 9:30 a.m. Senior Exercise; 12:00 noon Senior Meal; 7:00 p.m. Nurture/Membership Committee; 7:00 p.m. Chancel Choir Practice; 8:00 p.m. Bell Choir Practice

Saturday, December 7: 8:00 a.m. UMM; 10:00 a.m. Kid's Play Practice

Sunday, December 8: 9:00 a.m. Sunday School; 10:30 a.m. Worship — Children's Play; 11:45 a.m. Choir Practice; 7:00 p.m. **HANDBELL CONCERT**

Monday, December 9: 4:00 p.m. Scouts

Tuesday, December 3: 12:00 noon Senior Meal; 5:30 p.m. Scouts; 7:30 p.m. CARE & SHARE; CHRISTMAS GET-TOGETHER

Wednesday, December 11: 3:15 p.m. Scouts; 6:30 p.m. DISCIPLE Bible Study

EMANUEL UNITED CHURCH OF CHRIST

Wednesday, December 4: 1:00PM Emanuel Quilters; 6:15PM Girl Scouts; 6:30PM Basket weaving; 6:30PM Bell Choir; 7:00PM PASS meeting; 7:00PM C.E. Board meeting; 7:30PM Adult Choir

Thursday, December 5: 6:30PM Worship; 7:00PM Bible Study

Friday, December 6: 7:00PM AA

Saturday, December 7: 9:00AM Live Nativity Set-up; 9:00AM Optimists Christmas Party

Sunday, December 8: 9:15AM Sunday School; 10:30AM Communion Advent Worship Service; 11:30AM Advent Workshop and Hanging of the Greens/Luncheon; 11:45AM Confirmation Class

Monday, December 9: 3:30PM Children's Choir; 6:30PM Optimists; 6:30PM Girl Scouts

Tuesday, December 10: 7:00PM Boy Scouts

ST. THOMAS LUTHERAN CHURCH

Sunday, December 8: Sunday School, 9:30 AM; Worship Service 10:45 AM

ST. JOHN'S LUTHERAN, BRIDGEWATER

Wednesday, December 4: Jr. Choir, 6:30 PM; Bell Choir, 7 PM; Midweek Advent Service, 8 PM; Sr Choir, 9 PM

Thursday, December 5: Mary Martha Circle Christmas party, 6:30 PM

Friday, December 6: Saline Christmas Parade, 7 PM

Saturday, December 7: SS Staff decorate church/trees, 4 PM

Sunday, December 8: Sunday School, 9:15 AM; Worship with Holy Communion, 10:30 AM; Youth Group, 6:30 PM

Wednesday, December 11: Jr. Choir, 6:30 PM; Bell Choir, 7 PM; Midweek Advent Service, 8 PM; Sr Choir, 9 PM

SHARON UNITED METHODIST CHURCH

Sunday, December 8: 11 AM Worship

ST. MARY CATHOLIC CHURCH

Wednesday, December 4: Cub Scout Meeting, (church basement) 5:30-6:30 PM; Agape Group (parish center) 7:00-8:30 PM

Friday, December 6: Children's Choir Rehearsal, 3:30 - 4:30 p.m.

Sunday, December 8: Rel Ed., Preschool/Kind., 10:30 a.m.; Adult Choir, 9:30 & 11:30 a.m.; Rel Ed., Grades 7 & 8 (parish center) 11:45 a.m.; Christmas Sing-A-Long, 2:00 - 4:00 p.m.; Stephen's Group (church basement) 6:30 p.m.

Monday, December 9: K of C Business Meeting, 8:00 p.m.

Tuesday, December 10: Rel. Ed., Grades 1-4 (Klager) 3:15-4:15 p.m.; Rel Ed., Grades 5 & 6 (parish center) 3:30-4:30 p.m.

Wednesday, December 11: Cub Scout meeting, (church basement) 5:30-6:30 p.m.; BeFriends Meeting (church basement) 7:00 - 9:00 p.m.; Agape Group (parish center) 7:00-8:30 p.m.

OBITUARY

Florence M. Paul

Florence M. Paul, age 89, of Manchester passed away suddenly on November 30, 1996. Florence was born in Northfield Township, MI on May 16, 1907, the daughter of William & Caroline (Floto) Bauer. On June 9, 1931 she was married to Elmer Paul and he preceded her in death on July 7, 1975. Florence was a member of Emanuel United Church of Christ and was active in many levels of the church. She was also a member of the Manchester Senior Citizens. She spent many years as a baker at the University of Michigan.

She is survived by Sons, Richard (Arlene) Paul of Manchester, Robert (Mary Jane) Paul of Bruce Crossing, MI, William (Madonna) Paul of Manchester; a daughter Mary Ackerman of Ann Arbor; 9 grandchildren; 15 great-grandchildren; and a sister, Eva Kramer of Gardners, PA.

Besides her husband, Florence was also preceded in death by a son, Allen, a granddaughter Amy, and a sister, Pearl Young.

The Paul family will receive callers at the Jenter-Braun Funeral Home on Tuesday, from 2-4 and 6-8 PM. Funeral Services will be on Wednesday, December 4, 1996 at 2 PM from Emanuel United Church of Christ with Rev. Dr. Vincent W. Carroll officiating. Interment will be in Oak Grove Cemetery. In lieu of flowers, memorials may be made to Emanuel United Church of Christ.

THE CHURCH PAGE IS BROUGHT TO YOU BY THE FOLLOWING SPONSORS:

Luke & Barb Schaible	DAN'S WESTSIDE AUTOMOTIVE	Manchester Plastics	<i>WACKER'S GENERAL STORE</i>	Gene DeRossett
Pilot Metal Products A Division of Pilot Industries	ALBER ORCHARDS	<i>Dr. Charles Lyon, D.O.</i>	MANCHESTER CAR WASH	MANCHESTER TOOL & DIE
David Chartrand	Norm & Olga Walz	MAID IN AMERICA®	HENDLEY & DATSKO, P.C. Attorneys at Law	Manchester Chiropractic Clinic
Clark & Penny Getty	S-K Sales, Inc.	KLEINSCHMIDT True Value Hardware	HAROLD BUSS	PAUL & MICHELE KLUWE
MANCHESTER KIWANIS	MANCHESTER MANOR	THE MANCHESTER ENTERPRISE	GENE & GERTRUDE SMITH PINNACLE ENGINEERING	HAARER'S MEETING PLACE

Announcements

It's almost time to register for WCC winter classes in the Chelsea, Dexter and Manchester areas

Registration begins soon for Washtenaw Community College off-campus classes in Chelsea and Dexter. The winter classes available offer many opportunities to residents. There are 55 courses offered at Chelsea High School and Dexter High School. Classes range from General Chemistry and Music Appreciation to Principles of Accounting II and Logic. Anyone interested in continuing their education is invited to register.

Registration will be held at the following location; dates and times for classes held in the Chelsea and Dexter areas. New students are urged to contact the regional office located in their area immediately for information on admission requirements.

Chelsea Western Regional Center, 117 N. Main St., Suite 7 - Dec. 16, 17, 18, 19 & Jan. 2, from 4 - 8 PM; Dec. 20 & Jan 3, from 11 AM - 1 PM.

Advising services will be available for the Chelsea, Dexter and Manchester area students at the Western Regional Center Dec. 16, 17 & 18, from 4 - 8 PM. For more information on classes offered in the western region areas, contact Mary Lou Rigg at (313) 475-5935.

Samaritan Counseling Services to Sponsor Manchester "Tree of Lights" Once Again

The Samaritan Counseling Services will hold their Annual Tree of Lights Ceremony on Sunday, December 15, 1996, 5:30PM in Manchester Gazebo Park. Warming fire and hot cocoa will be provided. Names of those honored and memorialized will be read when the tree is lit. A card will be sent to those remembered or to their families.

Gifts to the Tree of Lights (\$2.50 per light) enable the Samaritan Counseling Service to provide area residents with free assistance for visits at the Emanuel United Church of Christ in Manchester. Samaritan Counseling Services staff are clinically and theologically trained, certified and licensed. To make an appointment, or for further information, call 313-663-6671. Samaritan Counseling Services is a non-profit, tax-deductible organization, supported by local churches, United Way designated donations, and interested individuals.

Dance Arts Academy Prepares for December Recital

The Dance Arts Performing Ensemble has completed auditions for the 1996-1997 season and moved into an active rehearsal schedule for their December show. On December 14 and 15 the Dance Arts Performing Ensemble will be presenting a Christmas Fantasy, with ballet and tap performances as well as the final act of The Nutcracker ballet. Ensemble dancers, coming from Chelsea, Dexter, Manchester and the surrounding area, range in age from 9 to 16. All dancers are required to take a minimum of two dance classes per week in addition to attending classes and rehearsals of the Ensemble. A volunteer Board of Directors manages the business of the Ensemble — everything from sewing costumes to paying the bills. The Ensemble's artistic director is Susan Buck Heinz — who volunteers not only her time but also the use of her dance studio.

Heinz has been teaching dance in the Chelsea area for 11 years. She initiated the formation of the Ensemble last year in order to provide her students with the opportunity for a larger repertoire of dance as well as more performance

experience. Heinz has both her Bachelor's and Master's degrees in dance from Indiana University and attended the National Academy of Dance, a performing arts high school, in Champaign, Illinois. While at Indiana University she was on the Children's Dance Faculty and studied with Anna Paskevaska, author of Both Sides of the Mirror, The Science and Art of Ballet and other books about dance. She has studied with renowned dancers Gwynne Ashton, Michael Maule and Anthony Valdor, as well as nationally acclaimed tap and jazz teachers. Her studies have taken her to the Joffrey School of Ballet, the Southwest Ballet Center and the Houston Ballet Academy. She has performed with the Texas Ballet in Houston and been a guest artist with several national ballet companies. Her studio in Chelsea provides dance instruction in ballet, jazz, tap and modern dance for all age and skill levels. She offers a serious attention to correct technique and professional standards, combined with joy in dancing and perpetual emphasis on positive self-esteem for her students.

As artistic director for the

Dance Arts Performing Ensemble, Heinz is pleased to be able to bring in guest choreographer Lisa Pelio for the December show. Pelio returned to her native Michigan in 1994, after an absence of nearly a decade of building her reputation as a Choreographer and Master Teacher in New York, Atlanta and Chicago. She has taught for the Illinois Dance Festival, Northside High School for the Performing Arts (Atlanta), School of Atlanta Ballet, Ruth Mitchell Dance Company, Barat College and others. She has choreographed original full-length children's ballets and full-length classical ballets for various companies around the country. She was selected to set her works on some of the nation's finest dancers at the National Craft of Choreography Conference in New York. Pelio was Ballet Mistress for the 1994 Michigan Opera Theatre production of "Cinderella" and 1995's "Nutcracker" for the Lansing Children's Ballet at the Wharton Center. She is the Artistic Director of Danse Michigan. Pelio was also appointed to the Michigan Humanities Council by Governor John Engler in the fall of 1996.

The Reasons To Bank With University Bank Just Keep Adding Up!

FREE Checking
First Box of Checks FREE

FREE ATM Transactions*

5.38%* Money Market Account
 (\$1,000 Opening Deposit)

*Does not include Surcharge Fee (if applicable)
 *Annual percentage yield (APY) effective 12-2-96

Bank with University Bank and support the SOS Crisis Center through Kids B'Cause.

959 Maiden Lane
 Ann Arbor, MI 48105
 Phone: 313-741-5858
 Hours: Monday thru Friday: 9 am - 6 pm
 Saturday: 9 am - 1 pm



Have Your Day **In The Sun**
 (Even When It Rains).

TROPICAL EFFECTS

Tanning Salon
 428 - 0504



10% OFF
 Any Gift Certificate
 or Lotion thru 12/24

Walk-ins Welcome 20436 E. Austin

Hours: M - W 10-1, 2-8, T-Th 2-8
 Fri 10-1, 2-6, Sat 8-noon, Closed Sun
 Open Christmas Eve 10-1:00

This Year Get Your Shopping Done Early!

Call Gigi's for all your decorating needs...
 Wreaths, Garlands, Poinsettias

We can lighten your Holiday Stress and decorate for you - Home or Business.

Gigi's Flowers and Gifts

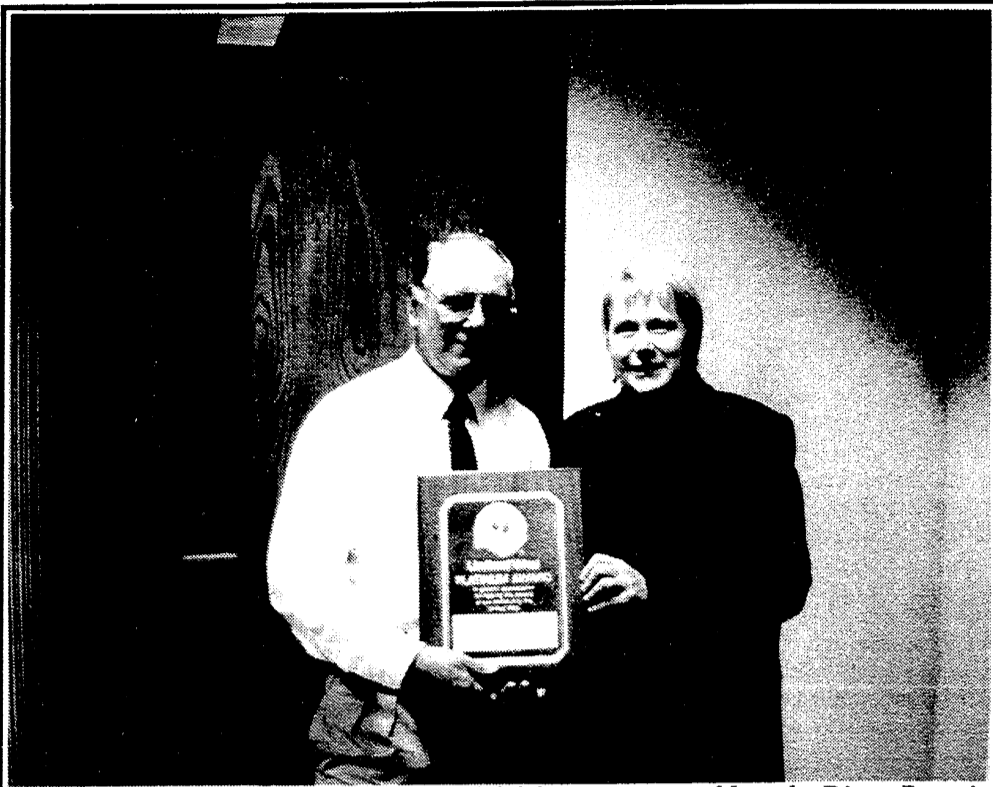
103 N. Main St., Chelsea
 Mon - Fri 9 - 6 New Sat Hours 9 - 3

We service the Manchester Area - deliveries twice daily.

475-3040



United Way



Johnson Controls Plastics Machinery Division, represented here by Diana Parr, is congratulated by Dave Petsch, Chairman of Corporate Giving for United Way of Manchester, on their generous employee contributions to the United Way once again this year. A big thank you to Diana and all the Johnson Controls PMD employees.

Also contributing, but not pictured, were the employees at Tower Automotive in Manchester. Thank you to one and all.

collections, by mail, has elicited equal or better response than the door-to-door canvassing in the past, she said.

One different aspect of this year's campaign is that this is the first year for the Manchester Little League to receive separate United Way Funding. In the past, money for the summer baseball program has been channeled through the Mancheste Summer Recreation.

United Way board members are all volunteers. Their work in serving the community continues year-round. Members are Brenda Tinsley-Tubbs, Ann Fowler, Ann Pat Wolf (Treasurer), Sula Jeffers (Secretary), Rev. Richard Hardy, Pat Wallace (Vice President), Dave Petsch, Judy Fahey, Joyce Golightly, and Lori Voegeding (Secretary). Chairman of the United Way Campaign is Sharon Kleinschmidt.

More details will follow in coming weeks, to let you know about the final outcome of the 1996 United Way Campaign.

Professional
Dog Grooming
All Breeds

Carol Bender
25 years experience
(313) 428-1627

Your home or mine

United Way at 80% of Goal

continued from page 1

Although giving to the Manchester United Way is down about 20% at this point, "we still don't have all of our final figures in yet," said Ann

Pat Wolf, member of the Board of Directors. "I think, overall, people are being more conservative in their giving this year."

Wolf indicates that the residential giving has remained much the same this year as in years past. The "new" method of residential

James C. Schneider
Owner

Schneider J.C.S. Service
Sales & Rental Janitorial Equipment & Machines
Janitorial Service • Carpet Clearing

428-1880 Business
428-1070 Residence

146 E. Main Street
Manchester, MI 48158

FUND RAISING

Manchester Sportsman Club
8501 Grossman Rd. • Friday 6:45 p.m.

Manchester American Legion
203 South Adrian • Saturday, 7:00 p.m.

ORTHODONTIST

RAYMOND P. HOWE D.D.S., M.S.

515 S. Main Street
Chelsea
18 yrs. Experience practicing orthodontics
(no professional referral necessary)
475-2260

Sula Darlene Jeffers

ATTORNEY AT LAW
150 E. Main Street
P.O. Box 625
MANCHESTER, MI 48158

(313)-428-8190

SANTA
Available: DECEMBER 2 thru 8

Stop in for all your Hallmark Cards and Wrapping paper Needs!

Celebrate the season of frozen mittens and tingling toes... with our *EXCLUSIVE*

Four Piece 1996 Special Edition

from nationally recognized Studio G! Artist and Sculptor, David Frykman.

Limited to 1996 Production

Only \$7.95
per piece

For a very limited time you may purchase these wonderful pieces individually for only \$7.95 each. **SAVE OVER 50% OFF** similarly priced pieces in his collection.

Manchester Pharmacy
128 E. Main St.
428-8398

Defens

Whether heading to your favorite Michigan ski slope or to a warm weather state escape, six seconds can save a lot of grief when Michigan's weather turns nasty, according to AAA Michigan.

That's because the leading cause of traffic crashes on ice-slicked, snow-clogged roads is following the car in front too closely. The driver in front stops; you can't.

Along with following some safe-driving techniques, Jerry Basch, AAA Michigan's Community Safety Services manager, recommends increasing your following distance on slippery roads from the good road gap of 3 seconds to 6 seconds.

A good way to measure the six-second time gap is to pick out a distinct road marking or sign, and then begin counting when the car ahead passes that spot — "one-thousand-one, one-thousand-two..."

"You're tailgating if you get to that spot before counting to six," Basch said. "Too

Drive Safely

Techniques take sting out of icy roads



and turns. Accelerate carefully so car wheels don't spin.

- Don't brake hard. The best technique for braking on ice or snow is "threshold" or "squeeze" braking. This is done by applying the brakes firmly to a point just short of lock up, and then easing off the brake pedal slightly. Applying steady pressure is better than "pumping" the brakes. If your vehicle has anti-lock braking, continuous firm braking is usually recommended. Check the owner's manual for proper procedure.

- In a skid, ease off the accelerator and don't lock up the brakes. Carefully steer in the direction you want the car to go and straighten the wheel as soon as the car begins to go in the desired direction.

- Anticipate potential danger such as ice on bridges, snow-covered lane markings, stalled cars and poor visibility. Adjust speed, increase distance between other cars or change lanes to avoid trouble. Watch for other drivers who may be unprepared for changing road conditions.

CHRISTMAS "OPEN HOUSE"

Free Refreshments - Sat & Sun Dec. 7th & 8th

Drawing/Drawing/Drawing

Name _____

Address _____

Phone _____

1st Prize - Westminster Chime, Pendulum Wall Clock, Cherry Case \$149.⁰⁰ Value

Runner Up - 2 drawer Tool Box with 60 pc. socket tool set \$99.⁹⁵ Value

No Purchase necessary! Drawing - Mon Dec 9th

- Adjust 7 to 10 ft.
- Strong Fiberglass Backboard
- Slam Jam Goal Snaps Back from Tough Dunks

Reg. \$129.99

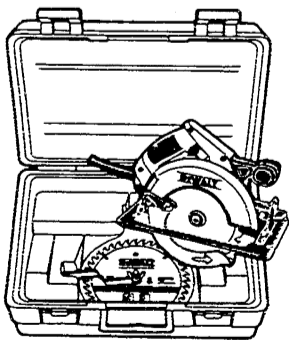
SALE

\$59.99

HUFFY

Elevator Utpack Kit includes backboard, goal, pole, and net!
While They Last!! No Rainchecks!

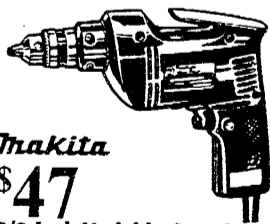
Snakelight. Keeps light on your work. Extra bulb & batteries included.



DEWALT

SALE \$118.00

7 1/4" Circular Saw Kit. New high-strength, low-friction ribbed shoe. Lightweight.



Makita

\$47

3/8-Inch Variable-Speed Reversible Drill

SALE-

\$88.00

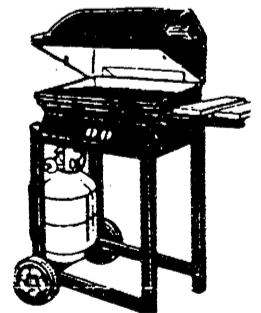


Bearcat 10Band 20-channel Scanner Police & Weather Alert

25,000 B.T.U. Gas Grill Reg. \$129.99

SALE

\$64.99



235 SQ. In. Wood Side Shelf

While They Last!!

Save 50% OFF Reg. Price



Life-Like SWAG BRANCH **SALE**

\$6.99

9 ft.

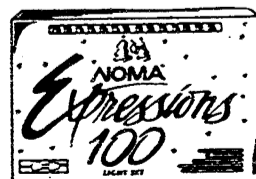
18 ft. Garland



SALE

\$5.99

Thick & Plush Indoors or Out



SALE - \$2.99

100 Light Midget Light Set. End connector. Clear or asst'd. color bulbs

SALE

\$5.69



REMA

Air-Bake™ Insulated Cookie Sheet protects baked goods. 14X16 in.

Organizations

Washtenaw County 4-H Recognition Program Held



Washtenaw County 4-H members, volunteers and community supporters were honored at the 1996 4-H Recognition Program held on Saturday, November 16. "4-H - A Shining Success" theme was inspired by the achievements of the award recipients. The following Manchester 4-H members were recognized for their accomplishments in the various project areas.

•**Emily Parr** - Jolly Farmerettes & Farmers - Food Preservation, Food & Nutrition

•**Heidi Ernst** - Country Expressions - Clothing, Fashion Revue Club Spirit Awards went to several young members for their heavy involvement in club work, enthusiasm and demonstration of good sportsmanship. Manchester members who received Club Spirit Awards were:

Brad Burmeister, R.J. Layher, Brad Alber, Jennifer Schulze, Krystal Welshans, Roxanne Ernst, Rebecca Alber, Christine Jensen, Stephanie Haeussler and Brock Welshans.

Volunteers completing one, five, ten, twenty, forty and fifty years of service to 4-H were honored for their dedication. First year pins were awarded to Manchester volunteers **Leonard & Karen Ellsworth, and Joan Ernst.** Fifth year volunteers recognized were **Barb Eversole and Patty Swaney.** Receiving tenth year recognition was **Lyle Wahl.** Nancy Bihlmeyer was awarded a 15-year pin, and **Elaine Feldkamp and Sharon Haeussler** were awarded 20th year recognitions. **Art Feldkamp** of Manchester was recognized by the Washtenaw County Extension Program with the 4-H Alumni Award, signifying his lifetime 4-H involvement and service to his community.

Community Supporters of the 4-H program received the Meritorious Service Award. Local recipients were **Clinton Fisk and the Manchester Enterprise.**

Scouting



for Food

The Cub Scouts of Pack 421 will be Scouting for Food in Manchester on Saturday, December 7, 1996. Food donated by the Manchester community and collected by the Cub Scouts stays in your community. Scouts will pick up bags of canned goods left outside your door on Saturday morning between 8:00 AM and noon.

Please place canned goods in a bag and place the bag outside your door on Saturday morning, December 7, by 8:00 AM. Please do not include frozen or perishable foods, or foods in glass containers. Remember, this food stays in our community.

The Scouting for Food campaign provides local scouts with an opportunity to demonstrate our appreciation of the support we receive from Manchester. Your donations of food are greatly appreciated, so remember Saturday, December 7, 1996 at 8:00 AM.

Masonic Lodge Announces Installation of Officers

Manchester Lodge #148 F&AM will install officers for 1997 on December 9 at 8:00 PM. The public is welcome. Lodge opens at 5:30 and dinner is at 6 PM. The elected officers are: Worshipful Master, John Church; Senior Warden, Keith Harper; Junior Warden, Gale Kayner; Secretary, Ronald Schook; Treasurer, James Schook.



FELDKAMPS CHRISTMAS TREES & FRESH WREATHS

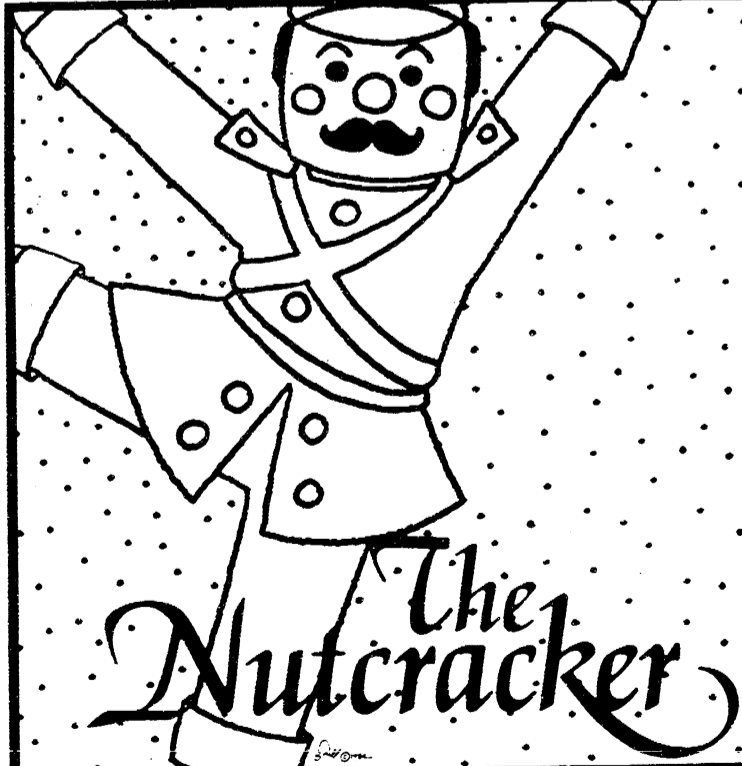
"You Cut or We Cut"

- Long & Short Needle trees
- All sizes Including Oversize Varieties
- Opens The Day After Thanksgiving

FRI-SAT 9-5 & SUN 1-5 (or by appt)



428-8571
Pleasant Lake Rd./Smythe Rd. intersection



The Nutcracker

Ann Arbor Ballet Theatre
Carol A. Radovic, Director
with
MICHIGAN SINFONETTA, David Daniels, Conductor

POWER CENTER FOR THE PERFORMING ARTS, 121 Fletcher
Thursday, Dec. 12, at 7:00 P.M. Friday, Dec. 13, at 8:00 P.M. Saturday, Dec. 14, at 2:00 P.M.
Saturday, Dec. 14, at 8:00 P.M.

Children 12 & Under \$8.00 Seniors/Students w/L.D. \$10.00 Adults \$18.00
Tickets available at Michigan Union Ticket Office (313-763-TKTS)

Great Selection of Movies including all the NEW Releases

VIDEO WORLD

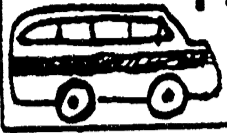
**327 W. Main
428-1990**

Great Parking
General Titles \$2 for two days
Candy, Cotton Candy &
Popcorn
Rent 10 movies - get 1 FREE
Drop Box to better Serve You

Monday Specials
instead of Tuesdays
Free Popcorn • 99¢ general rentals
Pizza Combo Sundays
Rent any 2 movies + get
\$3 off lg. Twin pk or
\$2 off med Twin pk

**HOURS: Monday 12:00 - 10:00pm, Tues.-Thurs., 11:00 - 10:00pm,
Fri. 11:00 - 11:00pm, Sat. 10:00 - 11:00pm, and Sun. Noon - 9:00pm**

MANCHESTER AREA SENIOR CITIZENS



New

by T.V. Ludwick

On the tellie the other evening, we learned that within a few years we would be receiving our daily news electronically through a computer. In fact, they predicted the end of the newspaper. How in the world would the Old Newsboys Goodfellow Fund continue? Would those guys (and gals) go house-to-house to collect funds from floppy diskettes and leave the rest of us out of the action? For you folks who understand this nonsense will be glad to hear a CD-ROM is superseding the floppy diskette and the question is asked, "Will the DVD supplant them and the videocassette as well?"

I know at this point that you are just dying of curiosity...what is a DVD? I'm beginning to wish I hadn't run across this article in the AA News on Digital Video (or Versatile) discs. But, Catalina Ortiz states: "DVDs are one of the hottest topics in high tech. It is touted as an eventual replacement for CDs, VCR tapes and computer CD-ROMs because it boasts far greater capacity as well as superior sound and visual performance." Page F-6 of the November 25th paper will explain this better than this poor soul (who definitely doesn't understand most of it). So why am I writing about it? I love to get into trouble by talking about subjects I know absolutely nothing about.

Thursday, December 5: Jan and those busy kitchen helpers who do such a terrific job each Tuesday and Thursday at the Methodist Church preparing senior lunches plan baked chicken today. All you who are 55 or older are cor-

dially invited to attend and, as an added bonus, our December birthday seniors will be honored today. Get your reservation in by either signing the "book" at meals, or by calling Sandy Smith at 428-8495 between hours of 9 and 10 AM. Then, come and enjoy the party and go on to the Center at 12:30 for bingo.

Friday, December 6: The senior bus begins pickup to go to Ann Arbor for the Christmas Nativity Exhibit at 9 AM. You may call Erma Alber to check if the bus is full. Her number is 428-8707.

Tuesday, December 10: Today at 9:30, the Manchester Area Senior Citizens Council will hold their annual meeting. Council meeting will start at 10:30 and you are invited to attend both these meetings. At noon, Jan and crew will serve baked macaroni & cheese to all us eager eaters at the church on the hill. Come join us.

Wednesday, December 11: A trip is planned to Flowerland at Saline. Senior bus will begin pickup at 9:30. Oh, yes, a stop for lunch will be part of the fun day. Call Erma to go along.

Thursday, December 12: Chef's Choice today at senior meal. You really ought to try some of Jan's choices..they are good! Then go on to the Center for bingo.

Looking ahead to **Friday, December 13:** Klager Senior Citizens Dinner is on today and what a treat! You must sign up so reservations can be made with Klager School. Bus pickup begins at 9:15, call Erma if you wish to be picked up to go to the program and dinner.

Deborah Engelbert

Real Estate Sales Associate
The Charles Reinhart Co.



30 Million In Sales !

Office: 313-971-6070
Direct: 313-669-5897
Res: 313-475-8303
Fax: 313-747-7880

2452 East Stadium Blvd.
Ann Arbor, MI 48104

Reinhart
Charles Reinhart Company Realtors

Home for the Holidays

Hot meals, flat laundry, housekeeping,
24 hour emergency call system,
activities and much, much more!

Stay Independent at
Brooklyn Living Center
151 Constitution Ave., Brooklyn
592-2828

Ganton Retirement Centers Inc.
"The Finest in Retirement Living"

STEIN ELECTRIC COMPANY, INC.

Licensed & Insured Contractor 24 Hour Emergency Service
Motor Controls & Lighting
Ag. • Commercial Industrial • Institutional Residential • Backhoe
& Trenching Services 50 ft. Bucket Truck

Rick Graustein • Manchester, MI • 313-428-9050



DAN'S WESTSIDE AUTOMOTIVE

660 W. Main St. 428-9455
24 Hour Wrecker Service

- | | |
|-------------------|----------------------|
| Tune Ups | Brakes |
| Transmission | Tire Rotations |
| Custom Exhaust | Chassis & Suspension |
| Air Conditioning | Front End & Four |
| Oil Lube & Filter | Wheel Alignment |

WINTERIZE SPECIAL - \$44.95

includes:

Complete inspection of cooling system - Flush -
up to 2 gallons new Antifreeze*

Mon - Fri 8:00 - 6:00 Sat 9:00 - 1:00

Free Pick up and Delivery Service
*if sierra needed additional cost

TEFFT Tree Farm

and Landscaping

11711 Austin Road, Brooklyn

517-536-4164

Scotch Pine - You Cut \$16

Other Varieties Pre-cut and priced

Open

Weekdays 3pm - dark; Dawn to dusk
on Saturday

School

Nellie Ackerson Middle School 1st Marking Period

"A" Honor Roll

8th Grade

Elizabeth Bauer*, Audrey Bennett*, Amber Cullip*, David Du Russel*, Elizabeth Elliott*, Randi Foster*, Shannon Gaal, Kathryn Horodeczny*, Rachel Jefferson*, Tristan Kladzyk*, Rachel Landry*, Sarah Luckhardt*, Jason Orzechowski*, Jacqueline Palms*, Rachel Pfaus*, Amy Preston, Jack Smail, Ashleigh Sewell*, Kristen Taddonio*, Kristen Witcher

7th Grade

William Brinkman*, Jeffrey Chapin*, William Cole*, Katyn Craig*, Elizabeth Dettloff*, Clinton Grenier*, Dustin Harris, Justin Henderson, Lesley Jacob*, Kelsey Johnson, Katie Keller, Adam Knapp*, Alex Kormendi, Aaron LaRock, Brent Leverett*, Christopher Loud*, Eric Mackres, Ryan Maggetti*, Christopher Maly*, Taryn Nye*, Derek Panches*, Karl Schaible*, Michelle Sodt*, Sheila Staffeld*, Kristi Trinkle*, Michael Walter*, Natalie Weidmayer*, Anne Wiley*

6th Grade

Grayson Adler, Marie Beaudoin*, Cori Chrestensen*, Adam Deconinck*, Amy Hough*, April Lukas*, Joshua McCalla*, James McCarthy, Erik McGuire*, Jennifer Meyer*, Katharine Meyer*, Elizabeth Okey*, Elizabeth Page*, Graham Parker-Finger*, Julia Steinaway*

5th Grade

Jamieson Abbott*, Terris Ahrens, Lance Aiken*, Ryan Brinkman*, Michael Coval*, Megan Eisenhauer*, Dan Fleck*, Kristin Guenther*, Aaron Helber*, Sean Heslip*, Johnathan Jameson*, Sydni Johnson*, Krystal Mannor*, Katie McConnell*, Katharine Meranuck*, Sean Monti, Katelyn Nye, Jonathan Schaible*, Daniel Schulte*, Patrick Spensley*, Michael Taddonio*, Ryan Thomas*, Korie Zink*

"B" Honor Roll

8th Grade

Leigh Aiuto, Sean Armstrong, Cheryl Barker, David Canter, Cassandra Clark, Roni Clay, Michael Conway, Jami Coopridger, Joseph Donnellon, Heidi Ernst*, Devin Golka, Shannon Green, Steven Handley, Jennifer Heskett*, Holly Horodeczny, Emily Hughes, Andrew Jones*, Ryan Kee, Michael Kennedy, Justin Knouase, Donna Kruse*, Nicole Leverett, Jessica Lindemann, Audrey Luck, Brett Maki, Erin Makielski, Elizabeth Mester, Laura Meyer*, Taryn Meyer*, Jonathan Miller, James Montgomery*, Ashley Munoz, Aaron Parks, Matt Raymond, Andrew Roberts, William Robertz, Samuel Robinson, Stephanie Schleicher*, William Slocum, Anthony Smith, Derrick Smith, Holly Sutton*, Kevin Turk, Nicholas VanBogelen, Evan Wahl, Eric Walter, Mindy Weir, Owen Whitman, Samantah Ybarra, Michael Young

7th Grade

Kristine Adams, Corinne Ahrens, Laura Braddock, Nathan

Bragg, Cara Callaway, Christine Carpentier, Megan Coutts*, Rebecca Curtis, Kira Davis, Heather Deacons, Adam Dimond, David Ellison*, Megan Ery, Ashley Farr, Michael Fuerstnau, Crystal Funk, Jacob Geyer, Brian Gier, Kylee Guenther, Joshua Hagerman, Luke Hollosy, Gabrielle Hyde*, Christine Jensen, Sara Johnson, Angela Kinsey, Amber Krutsch*, Bill Kuebler, Nicole Lane*, Rachelle Lilienthal*, Adam Little, Lisa Lobbestael*, Jacob Miller, Randy Mouser, Anthony Neal, Katie Page*, Amanda Parr*, Megan Patak, Casey Preuninger, Jeffrey Panches, Kelli Randall, Chad Roberts, Christopher Roberts, Jacob Sawyer, Ashley Schlosser, Jennifer Schulze, Michelle Smail, April Sysol*, Kevin Taylor, Justin Trinkle, Nathan VonBroda

6th Grade

Rebecca Alber, David Armstrong*, Brenda Bancroft*, Nicole Beach, Dale Becker*, Ashley Brannock, Matthew Castleberry, Ian Chartrand, Briana Clark, Jeanne Marie Cloke, Daisha DeLawter*, Amy Ervin, Dyon Evans, Christine Fairbanks, Ashley Golka, Heidi Hakken*, Tyler Harvey, Matthew Hintermaier, Philip Hughes*, Dara Jose, Valerie Kanta*, Jim Kelly, Jessica Kozar*, Michelle Krutsch, Craig Lane, Neil Love, Joel Makielski, Colin Moore*, Jack Moore, Jenna Novess, Katherine Ray, Christopher Robertz*, Ken Schwab, Michelle Slocum, Joshua Tobias, Shelby Trolz, Jackie Vigilanti*, Heather Wackus, Kevin Walter, Elisabeth Whitman*

5th Grade

Aimee Adams, William Aldrich*, Kevin Anderson, Kevin Bancroft, Ashley Billitier, Michael Bolan*, Matthew Callaway, Todd Canter, Amanda Carey*, Michael Chapin, Korry Chavey, Ashley Collins*, Moses Cooper, Andrew Coutts, Sarah Craig*, Tate Curtis, Terre Deacons*, Bryce Dettloff*, Megan Doyle, Christopher Ecarius, Travis Farr, Nicole Feldkamp, Katie Fielder, Michelle Fox, Wade Goodell, Sebastian Gregerson, Sarah Henderson, Apryl Hernandez, Rodney Kidd, Joshua Knouase*, Stephanie Kuebler*, Noah Kuhn*, Abby LaRock, Jason Lindemann, Glen Lukas, Andrew Mahony, Lianne Maly, Jeffrey Miller, Joseph Mullikin, Katharine Ochs, Abigail Preuninger*, Chelsea Render*, Kimberly Roberts, Allen Scharpenberg*, Fallynne Schlosser*, David Schneider, Jennifer Schulz, Austin Scott*, Caitlin Sewell*, Chelsea Shaw*, Rosemary Sondeen*, Cori Steele, Jordan Tallman, Sarah VanRaden, Scott VanRaden, Christina Vecchioni*, Vanessa VonBroda*, Heather Walter, Andrew Warner, Kate Waters*, Amanda Young*, Jason Young*

Effort

Recognition

6th Grade Effort Recognition

Casey Young

5th Grade Effort Recognition

Clarissa Dancy, Katelyn Nye

* denotes effort recognition in addition to honor roll

All-Marine Wrestling Team to Present Assembly at High School

The Marine Corps elite All-Marine Wrestling team will perform in Metropolitan Detroit high schools on December 5 & 6 as part of their "Skip over drugs and jump into fitness" tour.

A national and international power in Freestyle and Greco-Roman wrestling, the All-Marine Wrestling Program has produced 46 individual National Champions, numerous International Champions, and six Olympians.

The four-man detachment will give a highly energetic and motivating 45-minute performance before an all-school assembly at Manchester High School, from 8:45 to 9:30 AM on Thursday, December 5. Provided as a service of the United States Marine Corps, the program is cost-free to participating schools.

During the presentation, various demonstrations will be performed to music. There will be interactive demonstrations of various throws, which include students and faculty members using the newly learned techniques to throw the Marine wrestlers.

The performance is very visual and impressive and include a one-of-a-kind rope jumping routine. The Marine wrestlers will present a message to students that using drugs, running with gangs and dropping out of school are not the means to achieving success in life.



Cut your own

CHRISTMAS TREES

SCOTCH PINES \$16⁰⁰

Table Top to 9 ft.

Decorate your home this season with wreaths, door swags and centerpieces. Cemetery Wreaths also available.

Pine View Farms
10998 Hardcastle Rd.
Brooklyn • 592-3892
10 - Dusk Tuesday - Sunday

Faist-Morrow

the Place to Go for a New or Used Vehicle

"Where the QUALITY Used Cars Are"

1500 S. Main St.
Chelsea
475-8663

★ 517-265-3055 ★
24 Hour Movie Hotline
ADRIAN CINEMA 6
3150 N. Adrian Hwy
Nov. 28- Dec 5
Shows Before 6PM \$3.50
*Free refill Pop & Popcorn Danc Day Only *
Free Listening Devices for the Hearing Impaired*

SPACE JAM PG
DEC 2 - 5: 4:45, 7:20, 9:20
THUR-SUN: 12:15, 2:30, 4:45, 7:20, 9:20

THE MIRROR HAS TWO FACES
DEC 2 - 5: 4:40, 7:15, 9:45 PG-13
SAT+SUN: 1:20, 4:40, 7:15, 9:45

STAR TREK: FIRST CONTACT
DEC 2 - 5: 4:20, 7:00, 9:30 PG-13
THUR-SUN: 1:30, 4:20, 7:00, 9:30

RANSOM R
DEC 2 - 5: 4:30, 7:00, 9:30
THUR-SUN: 1:00, 4:30, 7:30, 9:30

101 DALMATIANS G
THUR-SUN: 11:45, 2:15, 4:50, 7:30, 9:50
DEC 2 - 5: 4:50, 7:30, 9:50

JINGLE ALL THE WAY PG
DEC 2-5: 5:00, 7:30, 9:40
THUR-SUN: 12:30, 2:45, 5:00, 7:30, 9:40



All the best for you and your farm . . .

from your Farm Bureau Insurance Agent

Get all the protection you need - for your farm, yourself, and your family - from your Farm Bureau Insurance agent. Serving farmers is our specialty. That's why we are Michigan's largest farm insurer and the number one protector of Michigan farm families. Call today.

Larry Becktel
135 E. Main St. Sta. 200
Manchester, MI 48158
428-7331
Making your future more predictable.

FARM BUREAU INSURANCE

We've moved "Up Town" to 227 E. Main Street (formerly Manchester Eye Care Ctr.)

Jim Watson

Total Dental Care for the Entire Family

most insurances accepted

Call 428-9019 227 E. Main St.

Early Morning, Late Evening & Saturday Appointments available

CLINTON FOOT & ANKLE CLINIC
301 W. michigan Ave. • Clinton, MI
517-456-4114

Offering complete foot and ankle care for the entire family. -Specializing in-

Reconstructive Surgery	Laser Surgery
Sports Injury	Warts
Infant and Child Disorders	Ingrown Nails
Diabetic Care	Fungus
Foot and Ankle Injuries	Nerve Pain
Heel Pain	Skin Problems
Foot Pain	Bunions
Hammertoes	Calluses

Orthotics (Custom Casted Shoe Inserts)

DAVID R. LEVITSKY, D.P.M.

Board Certified Surgeon

Member of: American Podiatric Medical Association
Michigan Podiatric Medical Association

Hours: Tuesday/Fridays 10:00 - 5:00 p.m.
Saturdays 10:00-12:00

Please call for appointment - Most insurances accepted

Police Beat


November 19: 9:07 AM possible criminal sexual conduct of a child
 3:54 PM Telephone complaint, Juveniles gathering on Main St.
 6:15 PM Malicious Destruction of Property (MDOP) on E. Main
 9:51 PM Drive away at Hop In
 November 20: 8:34 AM Retail Fraud at Hop-In, Suspect in custody
 8:55 AM Vehicle crash at High School
 9:47 AM Minor in possession of tobacco, East Main
 3:01 PM Ordinance Violation, blight vehicle on West Main
 November 21: 6:05 PM Traffic Crash - Car vs. Deer on Adrian St.
 10:24 PM Deer Permit Issued from Station
 November 22: 5:40 AM General Assistance on West Main
 8:50 AM Civil Dispute
 9:42 PM Drive off at Hop In
 November 23: 2:37 PM Abandoned Vehicle, City Rd.
 10:30 PM Juvenile complaint, Hibbard St.
 November 24: 4:34 AM Investigate alarm on East Duncan
 9:00 AM MDOP, landscaping lights, Main Street
 10:15 AM MDOP, Main Street
 12:28 PM Warrant Arrest at Station
 4:55 PM MDOP to vehicle, Main Street
 11:36 PM General assistance at Hop In
 November 25: 6:06 AM Vehicle crash in parking lot
 12:41 PM MDOP to vehicle, Clinton St.
 4:13 PM Juvenile complaint, Main Street
 7:41 PM Traffic Crash, Duncan at Riverside
 November 26: 1:42 PM Hit & Run Crash on East Duncan
 November 27: 3:52 AM Larceny of Cellular phone, Ann Arbor Hill
 November 29: 10:16 AM Missing Person on Duncan St.
 12:24 PM Alarm at Manchester High School
 11:33 PM Alarm at Middle School
 November 30: 12:05 AM Juvenile Complaint, Main Street
 12:56 AM Juvenile Complaint, East Main, runaway
 6:33 AM Alarm at Middle School
 6:44 PM Drive off at Hop In
 7:32 PM Alarm at business on East Main
 December 1: 3:05 AM Alarm at business on West Main
 December 2: 9:06 AM Vandalism/Hit & Run crash at Klager
 10:00 AM Construction tool fell off in roadway, Macomb St.
 12:17 PM Drive off at Hop In

Kirk Excavating
 Sand - Gravel - Fill Dirt
 Basements - Driveways
Licensed & Insured
428-7938
 Dave Kirk
 14180 Schleweis Road
 Manchester

★ 517-265-3055 ★
 24 Hour Movie Hotline
ADRIAN CINEMA 6
 3150 N. Adrian Hwy
Nov. 28 - Dec 5
Shows Before 6PM \$3.50
*Free refill Pop & Popcorn Dame Day Only *
 Free Listening Devices for the Hearing Impaired*

DAYLIGHT PG-13
 DAILY 4:40, 7:15, 9:45
 SAT+SUN 1:20, 4:40, 7:15, 9:45
SPACE JAM PG
 MON-FRI: 4:45, 7:20
 SAT: 12:15, 2:30, 4:45
 SUN: 12:15, 2:30, 4:45, 7:20
THE MIRROR HAS TWO FACES
 FRI-THURS 9:20 ONLY PG-13
STAR TREK: FIRST CONTACT
 DAILY: 4:20, 7:00, 9:30 PG-13
 SAT+SUN: 1:30, 4:20, 7:00, 9:30
RANSOM R
 DAILY: 4:30, 7:00, 9:30
 SAT+SUN: 1:00, 4:30, 7:00, 9:30
101 DALMATIONS G
 SAT+SUN: 11:45, 2:15, 4:50, 7:30, 9:50
 DAILY: 4:50, 7:30, 9:50
JINGLE ALL THE WAY PG
 DAILY: 5:00, 7:30, 9:40
 SAT+SUN: 12:30, 2:45, 5:00,
 7:30, 9:40

A Perfect Gift for the GOLFER You Know!
Send them to Augusta!
April 9, 1997
 They'll spend the day with the "Masters"! Package includes: Round trip air on American Trans Air., transfers from airport to course, admission badge for practice rounds (both regular and par 3).
These will go fast! Limited availability!!
Detroit to Augusta, 8:00 - 9:35 am
Augusta to Detroit, 6:00 - 7:45 pm
Price: \$380 per person
 Full payment due at time of booking, MasterCard Visa accepted and is non-refundable.
UNIGLOBE Travel
Chelsea Travel, Inc.
 1070 South Main Street • Chelsea, MI 48118
 (313) 475-3110 (800) 875-3113



Hillside Tree Farm
 4714 U.S. 12, Tipton
 4 miles west of M-52 • (313) 274-0681
Fri. 12-5, Sat. & Sun. 10-5
 Wagon Rides, Tot tree lot, play area, Warming barn with food, beverages, fireplace, crafts and SANTA on weekends
Scotch Pine & Spruce, Cut your own \$8-29
 Other Varieties Pre-cut



WCC is close to home!

Western Regional Center offers these classes for Winter 1997

Chelsea, Dexter, and Manchester Areas, 114 North Main Street, Suite 7, Chelsea (313) 475-5935

Registration Dates for All Students:
 December 16, 17, 18, 194:00 - 8:00 p.m.
 December 2011:00 - 1:00 p.m.
 January 24:00 - 8:00 p.m.
 January 311:00 - 1:00 p.m.

ASSET Test:
 Asset testing will be held at Chelsea high School, Room 401
 Tuesday, December 36:00-8:00 p.m.
 Wednesday, December 116:00-8:00 p.m.
 Monday, January 66:00-8:00 p.m.

Registration Time Advising:
 December 16, 17, 184:00 - 8:00 p.m.

Tuition:
 \$52 Credit Hour In-District
 \$72 Credit Hour Out-District
 \$95 Credit Hour Out-State/Out-Country

Course Number	Section	Title	Prerequisite	CR	Days	Time	Location/Room	Instructor
Chelsea High School (CS) East Washington Street, Chelsea								
ACC 122	10	Prin of Account II	ACC 111	3	M	630- 925PM	CS402	Kerr Harry
ART 101	05	Drawing & Painting		3	T	630- 925PM	CS307	Staff
BMG 207	04	Bus Communication		3	W	630- 925PM	CS403	Staff
CEM 111	04	General Chem I HS	CEM&Alg	4	T	630- 925PM	CS403	Staff
CEM 111L	07	General Chem Lab		0	S	900-1155	LA233 main campus	Bailey Frederick
COM 102	08	Interpersonal Comm		3	M	630- 925PM	CS401	Staff
CIS 100	31	Intro To Comp	IBM	3	M	600- 955PM	CS412	Staff
CIS 100	32	Intro To Comp	IBM	3	W	600- 955PM	CS412	Staff
ENG 091	14	Writing Fundamental	Co: ENG 000	4	W	600- 955PM	CS401	Staff
ENG 111	33	Composition I	Co: ENG 000	4	R	600- 955PM	CS404	Staff
ENG 122	25	Composition II	ENG 111	3	T	600- 855PM	CS404	Staff
*MTH 039	37	Math Lab		3	T	630- 925PM	CS410	Arntson Wendy
*MTH 039	41	Math Lab		3	W	630- 925PM	CS410	Hannan Nancy
*MTH 039	45	Math Lab		3	R	630- 925PM	CS410	Smith Kristin
MUS 180	04	Music Appreciation		3	W	630- 925PM	CS404	Staff
PHL 250	03	Logic		3	W	630- 925PM	CS403	Staff
PLS 108	21	Gpv And Society		3	R	630- 925PM	CS402	Staff
SOC 100	14	Prin Of Sociology		3	W	600- 855	CS402	Staff

Dexter High School (DX) 2615 Baker Road

BMG 230	03	Supervisory Managemt		3	R	630- 925PM	DX107	Staff
*MTH	40	Math Lab		3	T	630- 925PM	DX205	Bateil Mark

*Note: CEM 111 04 students must register for CEM 111 Lab held on main campus.
 * Note: math lab includes 10 (ten) separate courses including Basic Math, Prealgebra, Occupational Math, Intro to Algebra A&B, Business Math, Health Science Math, Triangle trig, and Intermediate Algebra A&B.

Winter Classes start January 8, 1997

Classified

Services

Lost or Found a Pet? Call the Huron Valley Humane Society. 662-5585. tfn

Felder Painting: Interior and exterior. Free estimates. Senior citizen discount. Phone 428-8506 tfn

Farmers' Sand and Gravel.
We deliver and spread driveways. 475-8850 tfn

Benedict Painting: Call Chuck for free estimates. 15 years experience - interior & exterior painting. 517-536-4812 tfn

Alber Excavating - Sand - Gravel, basements, drainfields, topsoil, snow removal. 428-0865 tfn

Stump Grinding & Tree Removal Garden rototilling - Free estimates. Insured. R & L Tree Service 428-1675 Rich & Russ Lutton tfn



PREMIER CONTRACTING, Full service residential and light commercial builder. 428-9826. tfn

Keith's Barber Shop

Two Barbers. Tues. Wed. Fri. 7:30 - 5. Thurs. 7:30 - 4 Sat. 7 - Noon. Closed Mondays. 428-8584 eow

Topsoil, black dirt, sand, stone, gravel, fill dirt. Phone 313-475-8526. 1/6/97

Auto Auto Parts - Tecumseh. We do small engine repair. Get your snowblower tuned up for the '96/'97 season. Pick-up and delivery available (517) 423-8080 TFN

Manchester Electric, Inc. Contracting & In-home service 428-8243. TFN

Snowplowing and Hauling. Yard, home, farm or construction clean up. Also field mowing, raking, & trimming. Senior discounts. 475-2189. 12/30

TV - VCR Service. Knapp's TV & Repair. Pick up service at Kleinschmidt Hardware, 19870 Sharon Valley Rd., Manchester. Monday - Sunday 428-8337 or 517-592-2680. 12/19

House Cleaning: Weekly, bi-weekly, or monthly. Also special one time Holiday cleaning. Would be great for a gift. Call Lisa 428-0316. 12/5

If you demand excellence in you housecleaning projects, call 428-7366. Weekly, bi-weekly, and special cleaning projects. References available. 12/19

Day/Child Care

Opening for one child in my village home. Warm, family atmosphere. License #DF810067266 - Anne Kastanis. 428-9806 TFN

Free

Free Puppies in Norvell area. Mixed breed - blonde. Will be medium sized. Need homes for holidays!! (517) 536-0770. 12/5

Help Wanted

Pizza Makers and Drivers needed 10 am to 4 pm Mon-Fri \$5.50/hr. plus tips. Apply in person or Call Ollies Pizza 428-6543.

Third shift, premium pay. Hop-In. 10pm - 6am. Health Insurance, 401K, Tuition reimbursement, employee incentive program. Apply in person at Hop-In 100 E. Main. TFN

Office Assistant for insurance agency in Manchester. Part time position; strong oral and written communication skills. Computer experience preferred. Call 428-7331 for interview. 12/5

The Manchester Village Planning Commission is looking for a recording secretary. Minimum of one evening meeting per month. \$25 per meeting compensation. Contact Jeff Wallace, Village Manager 428-7877. 12/5

Business Opportunity

Farmers Insurance Group is developing Insurance Agencies. We are interviewing individuals with degrees who want to develop their own business. Start part-time w/o giving up present employment. Call Dave Stanbury at (313) 665-4747 or 459-5494. 12/12 & 12/31

Work at home \$500 - \$800. Part time 10 - 15 hours a week. 810-447-2428

Vehicles For Sale

Fire Truck - The Manchester Township Board of Trustees is taking sealed bids on a 1966 Ford C850 - John Bean Fire Apparatus. Truck last tested in 1986, 25,960 miles, 477 ci. gas engine, 750 gpm volume pump, high pressure John Bean pump, 750 gal. booster tank, 5 speed + 2 speed transmission, excellent condition.

Additional equipment includes: (1) 24' Ext. Ladder, (1) roof ladder, (1) attic ladder, (2) 10' hard suction hose, (4) 50' high pressure hose, and (2) John Bean high pressure nozzles.

For more information or inspection contact Fire Chief Gary Wiedmayer, 313-428-9439 or 313-428-7090; P.O. Box 418, 275 S. Macomb, Manchester, MI 48158. All bids must be submitted by December 9, 1996, 8pm. Manchester township reserves the right to accept or reject any or all bids.

Please designate envelope as a "Fire Truck bid" 12/5

Manchester Community Schools is accepting bids on two used buses: Bus #6 and Bus #7: 1984 International S-1700; 392 V-8; Gas" Auto Transmission; 66 Passenger; Wayne Body. Sealed bids are being accepted until 3:00 p.m. December 13, 1996. Mail bids to Manchester Community Schools, ATT. Bus Bid, 710 East Main Street, Manchester, MI 48158. Call 428-9029 to view buses. 12/5

CLASSIFIED RATE:

\$4.00 for the first 20 words.
10c for each add'l word.
Thank You's and Memorials are \$5.00 for the first 50 words.

Ads must be prepaid
AD DEADLINE IS 5:00 FRIDAYS

ADS received later than the established deadline will be subject to a \$2.00 fee.

For Rent

Large ground floor 2 bedroom \$585 includes all utilities. No smoking or pets. 428-7173. TFN

Beautiful loft apartments. Downtown Manchester - central air, secured building, river view, hardwood floors. 2 bedroom \$585, no pets. Call 517-431-2008. TFN

Efficiency apartment for rent in Manchester. Includes all utilities. Large two bedroom upstairs apartment in Clinton. Call 517-522-4064. TFN

Manchester Apartments now accepting applications for 1 and 2 bedroom apartments. Call 428-9270 or TDD 800-760-1997. 12/19

13720 Horning Road, Brooklyn. Large 3 bedroom home, no pets. \$650/month. 517-764-0700. 12/12

Office space available downtown Manchester. Three rooms with reception area. Reasonably priced, utilities furnished. Contact - Jim Mann at 428-8388. 12/12

Miscellaneous

Must SELL! 3 New ARCH Type Steel Buildings. 25X30, 30X58. Financing in place. Must Sell immediately. Great backyard shops and garages. Call Today 1-800-222-6335. 12/5

Wedding Invitations at discount prices. Also graduation, anniversary, birth announcements. Hundreds to choose from. Express Graphics. Professional quality, affordable price. 428-1613. TFN

Lose up to 30 pounds in 30 days guaranteed 810-447-2425. 12/26

Jefferson Art Studio. Open Saturdays till Christmas 9am - 4pm 428-8861. 4371 Lima Center Rd. North of Pleasant Lake Road. 12/12

Found

Jewelry found on Main St. Please call 428-7361 with description.

Antiques

Manchester Antique Mall: 35 Dealers. Open 7 days 10-5. 116 E. Main. 428-9357. tfn

Thank You

We would like to THANK All of the local businesses, organizations and individuals for your continued support of the Manchester Co-op Preschool auction.

The 18th Century Shoppe, Ann Arbor Marriott, Applebees, Briarwood Movies, Atlas Feed, Baker's Dozen, Black Sheep Tavern, BOC Gases, Jean Robert, Book Connection, Bridgewater Lumber, Busch's Valuland, Callamity Jane's, Chapters & Verses, Dairy Queen, Common Grill, Construction Connection, Crossroads Bookstore, DuRussel Farms, Eden Foods, First of America, The Flower Garden, Great Lakes Bancorp, Great Harvest Bread Company, Haarer's Meeting Place, Heidi's Salon, JAC Products, JC Penney, K&W Equipment, Keith's Barber Shop, Kim's Kountry Kitchen, Kleinschmidt's True Value, Lodi Farms, Manchester Plastics, Manchester Automotive, Manchester Enterprise, Manchester Machine, Manchester Market, Manchester Pharmacy, Manchester Veterinary Clinic, Marti's Salon, MC Sporting Goods, Midwest Ford, Mommy I Need That, Ollies Pizza, Ornamental Shoppe, Pamida, Pilot industries, Pinnacle Engineering, Pleasant Lake Hardware, Premier Contracting, Rainbow Patch, S - K Sales, St. Mary's Church, Subway, Target, The Body Shop, Tim Turvey, Video Watch, Video World, Village Toy Shop, Wacker's, Woodbrook Enterprises..... and many other friends and families of the Preschool.


PHOTOCOPIES

The
Manchester Enterprise
109 E. Main St.
428-8173

FUND RAISING

Manchester Sportsman Club
8501 Grossman Rd.
Friday 6:45 p.m.

Manchester American Legion
203 South Adrian
Saturday, 7:00 p.m.



A
Wedding to Remember
by Carlson Craft

We'll help you make your wedding as special as you want it to be. Come in and see our elegant invitations and announcements, beautiful bridal books, napkins and other accessories to make your wedding day complete.

The Manchester Enterprise
109 E. Main St.
Manchester, MI 48158
428-8173

ATLAS Has It All!



Atlas Happy Bird- A quality blend of black oil sunflower seed, millet, cracked corn, and milo. Available in 25-lb. and 50-lb. bags.

Atlas Tri-Bird - A premium blend without corn


Also- Milo, White Millet, Red Millet, Sunflower Hearts Med, Peanut Hearts, Safflower Seed, Thistle, Special Wild Finch, No Waste Premium, Wings Wild Bird Block, M.T. Feeder Bird Cakes, M.T. Feeder Bird Block, PMI Select Songberry, PMI Premium Blend

Get Your Supply at -
ATLAS
of Manchester
 18875 W. Austin Road
 428-7077

WACKER'S GENERAL STORE
 Corner of M-52 & Pleasant Lake Rd.
 428-8366

Hours:
 Mon-Thurs: 7am-6pm
 Fri&Sat: 7am-9pm
 Sun: 8am-6pm

Diamond Crystal Salt



Buy 10 get 1 FREE
Salt for your slippery spots too!

Looking for a Higher Yield Certificate of Deposit?

Then look to United Bank & Trust.

	9-Month CD	18-Month CD	27-Month CD
\$10,000 & below	5.50% APR	5.75% APR	6.00% APR
\$10,000 & above	5.75% APR	6.00% APR	6.25% APR

•• No minimum balance requirements ••

"At United Bank & Trust we strive to provide our clients with quality products and services to fit their financial needs. That's why we are excited about our new CD specials. These CDs offer a higher annual percentage yield than our traditional CDs and have no minimum balance requirements. This makes them the perfect fit for many investment needs."

- Earl M. Roehm, Executive Vice President, Personal Banking
 To take advantage of this special offer, simply complete the coupon attached and mail it with your investment to:

UNITED BANK & TRUST
 ATTN: M. DeShano
 11839 Tecumseh-Clinton Road
 Clinton, MI 49236

Amount Enclosed: \$ _____
 Term Requested: _____ months

Applicant Name	Date of Birth	Soc. Sec. #
Co-applicant Name(if joint)	Date of Birth	Soc. Sec. #
Street Address	City	State Zip
Home Telephone Number	Business Telephone Number	

AGREEMENT TO TERMS:
 Under the penalties of perjury, I (we) certify that 1) the Tax Identification Number(s) on this form is (are) correct and 2) that I am (we are) not subject to backup withholdings under the Internal Revenue Code.

Applicant Signature _____ Co-applicant Signature _____

Your CD yield will be the current yield on the day we receive your check. For today's rate, or to speak to a Financial Services Representative, please call (517) 456-6048.

Or stop by one of our near by offices:

TECUMSEH LOCATIONS CLINTON OFFICE

Main Office
 205 E. Chicago Blvd.
 (517) 423-8373

11839 Tecumseh-Clinton Rd.
 (517) 456-6048

Herrick Park Office
 610 N. Evans
 (517) 423-8373

West Chicago Office
 1208 W. Chicago Blvd.
 (517) 423-8373

Annual percentage yield as of 12/5/96 is subject to change at any time. Interest penalty will be charged for early withdrawal. For additional information please call (517) 456-6048.



Member FDIC

Sharon's Christmas Corner
Saturday - Dec. 7th
9:30-4:00

Sharon United Methodist Church Corner of M-52 & Pleasant Lake Rd.
 Crafts 🎄 Decorations 🎄 Candles 🎄 Gifts
 🎄 Goose Clothes 🎄 Jewelry 🎄 Clocks 🎄
 Baby Items 🎄 International Items

FODOR'S Christmas Tree Farm
 You cut or Fresh-cut
 Fir - Spruce - Pine (8 varieties)
 All Trees prepriced \$5 - \$75,
 trees up to 16'ft.

Potted Trees - Roping - Wreaths - Gifts - Snacks
 Free Wagon Rides - Animals - Animated Toy House
 Santa will be here on weekends!

Saws & Tree Cleaning Provided
 3360 Burtch Road,
 3-1/4 mi. south of Grass Lake Traffic Light
 open daily 10 til dusk • 517-522-4982
FREE Tree Wrapping w/this Ad


GEO
 Don't get disturbed... See Tirb!

**For New or Used Cars
See Charlie Dermyre
or Ray Tirb**

TIRB

Chevrolet & Geo

Phone: (313) 428-8212 or (313) 428-8492
 131 Adrian Street -Manchester, Michigan


LUXOTICA 
 eyewear.



Let them see you.™

Manchester Eye Care
Center, P.C.

Julie A. Marvin-Manders, O.D.

110 Riverside Dr.
428-2020

Mon 10-7, Tue 9-4, Wed & Thurs 8 - 5
 Most Sat 9 - 12

New Patients Welcome
Most Insurances Accepted

MANCHESTER
Market

Prices good thru December 8, 1996 455 W. Main

SPARTAN
whole frying
CHICKENS

59¢ / lb.

Coke
Products

12PK. CANS OR
6PK PLASTICS

\$2.99

+dep.

Golden Ripe
BANANAS

.28¢ / lb.

Hours: Mon - Sat 8am to 9pm Sunday 9am to 7pm

Nancy's Herb Pantry

Manchester Mill
Manchester, Mi

- ✦ Herbs and Vitamins
- ✦ Kinesiology consultant.




Wed - Fri 12 - 5,
 Sat 10 - 4 (313) 428-7621

Locally Owned and Operated

Modern Waste Systems, Inc.

7255 S. Brooklyn Rd.
 P.O. Box 275 Napoleon, MI
 (517) 536-4900




COUPON COUPON COUPON

One Month **FREE** with this coupon

For All New Customers


Seasonal Excluded
 (maximum savings of \$20)

M 10-7; T-F 10-5:30 428-1910
 Sat 10-3 Manchester Floors 230 E. Main




ACTIVE AREA CARPETS
HOLIDAY SPRUCE UP SALE

If you need a carpet that not only looks beautiful, but can take all the punishment your family can dish out . . . you need an **ACTIVE AREA CARPET**.
 These high density, high performance berbers and patterned loop pile graphic have intrinsic value. "Beauty that's more than just skin deep".
 Come in today and save.

<p>Avalon Sale \$12.⁶⁹ A richly textured Berber with wooly "good looks. Choose from 10 multiflex colors designed for casual living.</p>	<p>Calico Sale \$11.¹⁹ A uniquely hand crafted Berber style with rich layers of colors sprinkled generously with vivid highlights. A beautiful random pattern effect with sensational color depth. Available in 10 dramatic colorations.</p>	<p>Bacara Sale \$10.²⁹ A loop pile grass cloth texture with distinctive pin point tuft definition. Available in 8 beautiful frosted colorations.</p>	
<p>Baker Square Sale \$12.⁹⁹ A classic architectural design reminiscent of traditional woven "Grid Work" patterns. Each of the 10 colorations has heathered backgrounds with three rich solid color accents.</p>	<p>Delta Sale \$11.⁶⁹ A small scale pin dot pattern with universal appeal. Offered in 8 practical colors.</p>	<p>Domino Sale \$11.⁶⁹ An intricate patterned loop pile product that will handsomely appoint your Family Room, Play Room, or Den. Fashionably styled with superior appearance retention. Available in 12 exciting colorations.</p>	
<p>Block Party Sale \$11.⁶⁹ A high energy multi-colored block pattern in 9 up beat colorations.</p>	<p>Finisterra Sale \$11.⁸⁹ A small scale four color pattern styled with subtle combinations of "heathered naturals". A unique look that will add beauty and practicality to casual residential interiors. Available in 7 tinted neutral colors.</p>	<p>Charisma Sale \$9.⁶⁹ A subtle textured loop pile pin dot design. Classic and practical - available in 12 exciting colorations.</p>	
<p> CUMBERLAND A Division of Queen Carpet Corporation</p>			<p>Woodstock Sale \$11.⁵⁹ A tailored woven design that fits smartly into a variety of Active Areas of the home-from dens to wine cellars. Available in 7 deep saturated colorations.</p>

THE MANCHESTER
ENTERPRISE

Fire Department Trains in New Technology
 Drama Club Presents: "Up the Down Staircase"



Read all about it!

Subscribe to
The Manchester Enterprise
 - keeping up with Manchester's activities since 1867 -

109 E. Main St.
 Manchester, MI 48158
 (313) 428-8173

in Washtenaw County
 \$18
 Out of county \$20

Name: _____
 Address: _____
 City: _____ State/Zip: _____
 Phone: _____