

THE MANCHESTER ENTERPRISE

Speaking for the people of the Manchester Area



129th Year -- No. 1

Manchester, Michigan

40c per copy

We Begin Our 129th Year

"Come hither ye wise and ye witty,
Come hither from near and afar,
While I sing of the beautiful city
That sits by the banks of the R.
Perhaps there was never another
More prosperous under the skies.
And fond as a cherishing mother
She looks with the tenderest eyes
On her increasing dignity and importance as reflected in
THE MANCHESTER ENTERPRISE."

- THE MANCHESTER ENTERPRISE, Volume 1, #2
October 24, 1867



Mat Blosser still hand-fed the presses at age 85

Mat Blosser's Vision... 128 years later

A quiet and unassuming man, Mat D. Blosser, one of the founders of the Manchester Enterprise and continuous owner of the paper for 72 years, had a vision for this village in 1867. The second edition of the paper, dated October 24, 1867, contained the above verse and three more in a similar vein. While the identity of the author, "M.F.T.," is unknown today, he (or she) was probably someone who shared Blosser's vision for the village and for this publication.

By the time of Manchester's incorporation as a village in early 1867, and the founding of the Enterprise some seven months later, this com-

munity had gained a great deal of importance. Through Good Times and Bad Times, the Manchester Enterprise has been here for Manchester, reporting on the activities of those in the community as well as, in the earliest days, providing news of the outside world. Always, though, the Enterprise has been primarily the paper of a small town flavor.

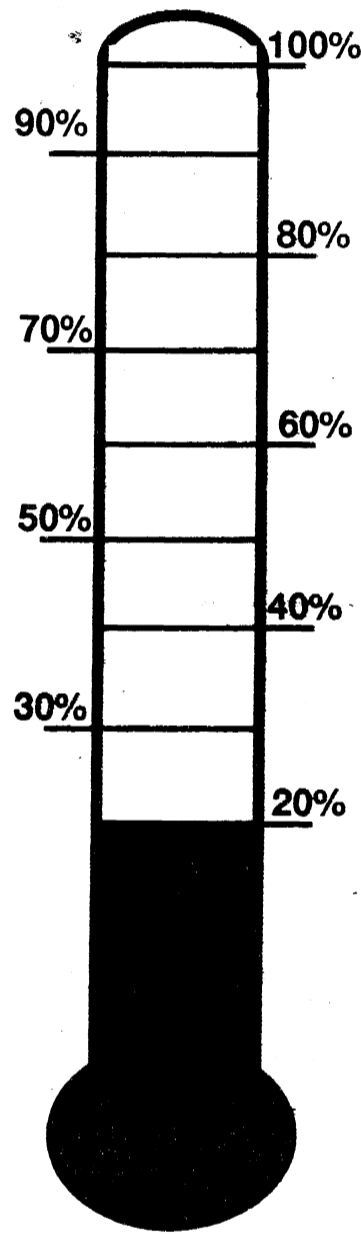
A small notebook can be found in the Historical Room at the library. On the front of the notebook is a custom printed label bearing the words: "Manchester Enterprise Printing and Publishing House." Handwritten on the front: "What they say of the Enterprise." Inside are several dozen clippings from a variety of newspapers as far away as Detroit and Chicago. Most of these

continued on page 15

MANCHESTER UNITED WAY'S 1995 campaign is now into its fifth week with 20% of the goal met. The campaign will go well into November, gathering support from local businesses and community members to fulfill our goal. See further information and photos on pages 8 & 9.

Our Goal

\$64,630



Pumpkin Festival Rescheduled

Due to Mother Nature's inclement weather on October 21st, the Pumpkin Carving contest and other activities will be held this Saturday, October 28th.

The time is the same starting at 11:00 a.m. going 'til 3:00 p.m. with most of the activities still on schedule. There will be music and entertainment for kids of all ages with the pumpkin seed spitting contest and the apple bobbing both back this year. Small Town Sounds will DJ the event and we may be also entertained by the Curtis's crank organ. "The Witch and The Scarecrow" play may not be able to be staged, it is still unknown at press time. A Giant Pumpkin has arrived to have it's weight guessed and the lucky winner gets to take it home with them for their Happy Haunting Porch!

"We would rather have disappointed kids last Saturday, than sick students all week missing school, hopefully Mother Nature will cooperate this weekend," stated one of the organizers. "There will be plenty of Fun, Food, and Festivities happening, and in case of rain the Pumpkin Festival will be moved to St. Mary's Parish Center (formerly the K of C Hall) directly behind Main Street on the North Side."

See You at the Pumpkin Festival!

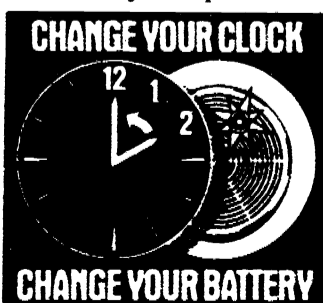
Please deliver this copy of THE MANCHESTER ENTERPRISE to...

Is Your Smoke Detector Working?

More Americans have smoke detectors than ever before. But nearly half don't work.

Without a working smoke detector as an early warning device, fire can spread unnoticed through the household, blocking escape routes and filling rooms with deadly smoke.

Make sure you're protected. Start a lifesaving habit this



CHANGE YOUR CLOCK

CHANGE YOUR BATTERY

October 29. When you change your clock from daylight-saving time, change the batteries in your smoke detectors.

A message from your fire department.

©1995 Energizer® brand Batteries
International Association of Fire Chiefs

Inside This Issue -

TWO SECTIONS this Week!

Community Calendar.....	Page 2
Behind the Masks.....	Page 2
Ethical Opinions.....	Page 3
Partners in Health.....	Page 3
Column Page.....	Page 4
Senior Citizens.....	Page 7
Travel News.....	Page 8
Special Advertising.....	Page 8
Local Government.....	Page 8
Classified Ads.....	Page 7B

Community Calendar

Scheduled Meetings

Bridgewater Twp.
Doug Parr Supervisor
428 - 8243
Karen Weidmayer, Clerk
13360 E. Austin
428-8641
Planning Commission
2nd Monday 7:30
Township Board meeting
3rd Wednesday, 8:00

Freedom Township
Town Hall 428-7545
11508 Pleasant Lk. Rd.
Robert Little Supervisor
Julie Schaible, Clerk
13785 Pleasant Lk.
428-7241
Township meeting
2nd Tuesday 8:00
Planning Commission
meets on First Tuesday
of all even numbered months

Manchester Township
Town Hall 428-7090
Ron Mann Supervisor
275 S. Macomb
Kathleen Hakes, Clerk
Township meeting
2nd Monday 8:00
Planning Commission
4th Tuesday

FIRE DEPARTMENT
428-9439 non-emergency

Sharon Township
Supervisor John Savage
20453 Pleasant Lk. Rd.
428-8907
Duane Haselschwerdt, clerk
428-7733, 428-7591
8440 M-52
Township Meeting
1st Thursday 8:00
Planning Commission
2d or 3d Thursday
Manchester Board of Education
Paul Kluwe, President
Meetings
3d Monday 7:30
M.H.S. Media Center
Superintendent - Ron
Niedzwiecki 428-9711
Village of Manchester
Larry Becktel President
Jeff Wallace Manager
428-7877
Village Council Meets
1st & 3d Monday, 7:00

The Community Calendar is a regular feature of the Enterprise. If your meetings or special events should be listed here, please call us at 428-8173.

The Manchester Enterprise is published each Thursday at 109 East Main St., Manchester, MI 48158, with second class postage paid at the Manchester Post Office.
POSTMASTER: Send Form 3972 to: Manchester Enterprise, P.O. Box 37, Manchester, MI 48158.
The Manchester Enterprise, Inc.
(313) 428 - 8173
Editor & Publisher
Emory Garlick
Ads & General Manager
Teresa Benedict
Production & Writer
Marsha Johnson Chartrand
One-year subscriptions are \$18 within Washtenaw County, \$20 outside the county. Deadline for display ads, photos, classifieds and news articles is Friday at 5:00 p.m. The Manchester Enterprise. No part of this publication may be used without the written permission of the publisher.
© 1994 The Manchester Enterprise

COMMUNITY EVENTS

<p>Monday 1st Monday: Manchester Township Library Board meets 7:30 pm. 1st Monday: Manchester Masonic Lodge, business meeting 7:30 1st & 3rd Monday: Manchester Village Council, 7:00 2nd Monday: Bridgewater Township Planning Commission meets 7:30 2nd Monday: Manchester Knights of Columbus meets 8:00 PM. Guy Little, Grand Knight 2nd Monday: Manchester Township Board meets 8:00 2nd & 4th Mondays: Manchester Optimist Club 3rd Monday: School Board meets MHS Media Center 7:30</p> <p>Tuesday 1st & 3rd Tuesdays: Manchester Kiwanis meets at Emanuel Church Upstairs Classroom, 7:00 PM</p>	<p>2nd Tuesday: Freedom Township board meets 8:00 2nd Tuesday after 1st Monday: Village Planning Commission 2nd Tuesday: Manchester Area Senior Citizens, 9:30 am 2nd Tuesday: 20th Century Club, 7:30 pm. 2nd & 4th Tuesdays: Shakespeare Club, 2:00 & 4:00 3rd Tuesday: Manchester Historical Society, 7:30 at Blacksmith Shop 4th Tuesday: La Leche League 10:00 am call 428-8831 for location and info. 4th Tuesday: Manchester Township Planning Commission Every Tuesday: Boot Stompers meet at Emanuel Church 7-9 PM Every Tuesday At Your Home: RECYCLE - put containers at curb by 7:30 AM</p>	<p>Wednesday 1st Wednesday: Raisin Valley Land Trust, at the Blacksmith Shop, 7:30 PM 1st Wednesday: Veterans of Foreign Wars, 7:30 pm 2nd Wednesday: American Legion Auxiliary, meets 7:30 2nd Wednesday: Manchester Recreation Task Force, 7:30 at Blacksmith Shop. 2nd & 4th Wednesdays: Manchester Area Home-schooler's Network. Call Tina at 428-0576. 3rd Wednesday: Manchester Men's Club 7:30 PM 3rd Wednesday: Community Resource Center Board, 7:30 3rd Wednesday, WIC Program, 9:30-3:00 Senior Citizens Bldg. 3rd Wednesday: Bridge-water Township Board, 8: PM 4th Wednesday: Manchester Township Fire Department meeting, 7:30 PM</p>	<p>Thursday 1st Thursday: Sharon Township Board meets 8:00 1st Thursday: American Legion Post #117, meets 7:30 2nd or 3rd Thursday: Sharon Township Planning Commission 3rd Thursday: Cub Scout Pack Meeting, 7:00 pm Every Thursday, Community Band - 7:30 PM Every Thursday: AWANA 6:30-8:30 for kids ages 4-7th grade at Community Bible Church</p> <p>Notices Town Meeting for Health Improvement Plan Thursday, October 26, 7:00 at St. Mary's Parish Center. RSVP to CRC, 428-7722 by October 20. Halloween, October 31 Men's Club Chili Cookoff, November 4th</p>
--	---	--	--

THE AURA INN
11275 Pleasant Lake Road 428-7993

Come Join Us for:

Walleye Dinner
Every Friday Night @ 6 p.m.

Herb Seasoned Rotisserie Chicken
Every Sunday - 5 p.m.

Oct. 28th -
Halloween Costume Party
CASH Prizes for Best Costumes
w/ Karaoke



HOURS: OPEN EVERY DAY 12-12, except Mondays

CLINTON FOOT & ANKLE CLINIC
301 W. Michigan Ave. • Clinton, MI
517-456-4114


Offering complete foot and ankle care for the entire family.
-Specializing in-

Reconstructive Surgery	Laser Surgery
Sports Injury	Warts
Infant and Child Disorders	Ingrown Nails
Diabetic Care	Fungus
Foot and Ankle Injuries	Nerve Pain
Heel Pain	Skin Problems
Foot Pain	Bunions
Hammertoes	Calluses

Orthotics (Custom Casted Shoe Inserts)

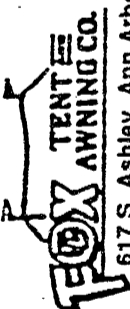
DAVID R. LEVITSKY, D.P.M.
Board Certified Surgeon
Member of: American Podiatric Medical Association
Michigan Podiatric Medical Association
Hours:
Wednesday/Fridays 10:00-5:00 p.m.
Saturdays 10:00-12:00
Please call for appointment-Most insurance accepted

Kirk Excavating
Sand - Gravel - Fill Dirt
Basements - Driveways
Licensed & Insured
428-7938
Dave Kirk
14180 Schleweis Road
Manchester




FLAG POLES

For Home and Yard
WOOD & ALUMINUM POLES
-ALSO- U.S. & FOREIGN FLAGS



617 S. Ashley, Ann Arbor
(313) 665-9126

Dial-a-Garden
971-1129



Wednesday, October 25: Drying and storing firewood
Thursday, October 26: How Much Wood is in a Cord?
Friday, October 27: Cleaning Chimneys
Monday, October 30: Jack-O-Lantern
Tuesday, October 31: Evergreen Needle Drop
Wednesday, November 1: Not available at press time
Dial-A-Garden is a system of pre-recorded daily gardening tips and is in operation 24 hours a day, 7 days a week. To talk to a Master Gardener, call 971-0079 weekdays from 9 AM - 12 and 1 -3 PM.

13th annual holiday

craft sale

Saturday, Nov. 4
9:00 - 4:30 p.m.

Free Admission

Gelman Sciences - On South Wagner Rd., Near West Liberty Rd., Ann Arbor

Great Door Prizes!

Come and join the fun!



The Second Front Page

The Mask Strikes Back!

A Ghoulish Guru

Cars will come to a complete stop on West Main Street and stare at the display that Dave Staten puts up in his yard each year at this time. "Sometimes they will yell out to me as they go past if I'm outside working on it," admits Staten. His attention-getting decorations have been known to Manchester residents for years. Even the Manchester Co-Op Preschool makes an annual tour down the street to check out this ghoulish array.

More people are decorating for Halloween than ever before. "It's easier than Christmas," says Staten. "For one thing, there aren't all those strings of lights to go out and besides, the weather is better." And he really gets a kick out of Halloween.

"I do it for the kids, really," he says. Although his son David who is 16 would rather not admit it, daughter Holly, 6, is still thrilled by her daddy's decorations. "I really live with three kids, not two," laughs Sheryl Staten. "He is just a big kid himself."

And at night the eerie lighting and music will make a big impression on young trick-or-treaters who make it a point to stop at the house on Main Street. What could give you the shivers better than seeing a graveyard, the Frankenstein monster on the porch, an enormous spider (complete with web) on the roof, and little spooks and goblins flitting around the yard? It's a place tailor-made for a spooky fall evening.

Better yet than the Staten's yard is his collection of masks. About five or six years ago he began making papier mache masks to go with elaborate Halloween costumes. "We were going to a costume party contest in Plymouth," he explains. "I had made Bart & Maggie Simpson masks for Sheryl and myself. We ended up winning fifth place with those masks, out of about 3,000 people who showed up for this radio station's contest."

That just fueled his desire to keep on making more detailed costumes. Each year he has made a new mask based on what's popular. One year it was "Chuckie" from the horror movie, Child's Play II. Another year he made "Mac Tonight" inspired by the McDonald's commercial. A

couple of years ago he designed a mask of Joe Cool, the Camel cigarette spokesman. "That year I won first place in a contest in Romulus." That one was pretty popular with David and he was allowed to wear it to school - along with a caveat: "Don't Smoke." Friends have also asked to borrow some of the papier mache masks and so time has taken its toll on the collection.

Last year THE MASK, from the popular Jim Carrey



From Zero to Hero?!



Not many would want to meet "Chuckie" in a dark alley

movie, showed up at Klager School when it was time for the Klager Kids' Halloween parade. Guess who was the man behind the mask? The suit and hat were also custom made - they actually spray painted the suit to get just the right color of neon yellow!

This year Dave's commitment to his job at Wolverine Pipeline has limited his spare time so there's not a "new" mask

this Halloween. But we were privileged to see a couple of the previous years' very realistic-looking masks when we took photos at the Staten home. And he's got plenty of ideas for more masks in the years to come. He is so diffident about his accomplishments but the artistic talent he displays is remarkable. And his son David seems to have inherited some of that talent - he was one of the designers of the 24-Hour Relay logo.

We can hardly wait to see who's next!

**See You At
Trick or Treat!
5-7 next
Tuesday**



If you've ever had a Halloween dream, it must have looked a little like the Staten's yard!

DEBT RELIEF FOR HOMEOWNERS

- No Application Fee
- Avoid High Broker Fees
- Pay Taxes
- Credit Card Debt
- Land Contract Bailloons
- Home Improvement
- Credit Problems? See Us
- Commercial Properties
- Vacant Land

For Fast Cash Call...
1-800-968-3626



First National Bank of Michigan



313/428-8836

"Serving you since 1972"

R.D. Kleinschmidt, Inc.

We Build Our Reputation Around Your Home



ROOFING • SIDING • GUTTERS

- Shingles & Flat Roofs
- Siding & Trim
- Seamless Aluminum Gutters
- Replacement Windows

19860 Sharon Valley Road • Manchester

Sharon Kleinschmidt and Richard Kennedy, Owners



Editorial / Opinion Page

Out & About

- by gar

Sometimes I get tired of the feeling that I've been ripped off and I would like to write an "Open Letter to Scammers!" It might go like this,

"Dear Ronald J. Leslie, Sweepstakes Director, Readers Digest; Carolyn Davis, Contest Manager, Readers Digest; Dorothy Addeo, Contest Manager, Publishers Clearing House; and Hugh Downs, TV Front Man and Huckster for Publishers Clearing House:

Your huckster ads, TV charades, and mail box stuffers that say: "Approved to Win \$10,000,000.00"; Mr. or Mrs. American Sucker "Will Receive FIVE MILLION DOLLARS" offers are but the cheapest and most deceptive come-ons to SELL your magazines, videos, books, knick-knacks and junk our society has encountered.

Your fine print reads "1 chance in two hundred and six million, (1 - 206,000,000) to collect the Grand Prize." Oh, sure, you also point out in bold print there are other winners, "1 - First Prize, 1 - Second Prize, 2 - third Prizes, 4 - Fourth Prizes, 10 - Fifth Prizes, 45 - Sixth Prizes and 'Hold Your Hat', there are a whopping 50,750 'Special Edition' Men's and Women's

Wrist Watches, approximate retail value: \$135.00 each."

I asked a retailer, what would a wrist watch of "approximate retail value: \$135.00 each." cost, if you purchased 51,000 of them.

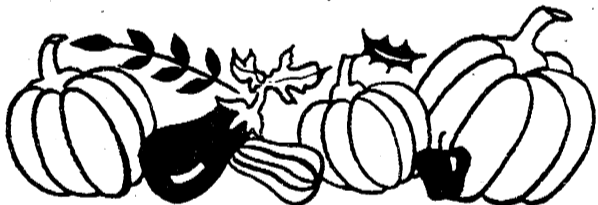
The answer: "It depends upon: who sets the approximate value, and where they were obtained. Probably the cost would be in the 5% to 25% range of "approximate retail value". That could be from \$6.75 to \$33.75. **NOW THAT IS A BIGGG DEAL AND A BIGGGER PRIZE.**

I have been conned by this, "APPROVED TO WIN" garbage advertising. Recently I ordered two videos which cost \$36.95. While shopping in a video store recently those same tapes were available for \$9.95, including a profit to the store. I figure you scammers ripped me off to the tune of \$27.00. Shame on me!

SO, Readers Digest, the magazine that exposes graft in the U.N. or writes of Con Artists ripping off little old ladies. EXPOSE YOUR SELVES AND PUBLISHERS CLEARING HOUSE.

Tell that story if you have the intestinal fortitude!

Sincerely,
gar."



Autumn

*Come little leaves, said the Wind one day
Come over the meadow with me and play
Put on your dresses of red and gold
For summer is gone and the days grow cold.*

*As soon as the leaves heard the winds loud call
Down they came tumbling one and all
Dancing and humming over the fields they flew
Singing soft little summer songs they knew.*

*Tumbling and fluttering over brown fields they went
Winter had called them and they were content
Soon nestled snug in their earthy beds
The snow made a blanket over their heads.*

by Rose Winright

The Manchester Enterprise welcomes letters to the Editor, Guest Editorials, and your comments, suggestions and opinions.

We ask that all letters submitted for publication be signed!

Should there be extenuating circumstances for withholding your name, we will give that full consideration.

IN MY OPINION...

Before you read any further I really am a sports fan and I love football.

As I watched the game Friday night between Manchester and Grass Lake I found myself becoming bored. Manchester has around 30 players and the Grass Lake team appeared to have around 20 players.

I continually saw the same players on the field for Manchester. I need to know why #21 Zach Maghes and #3 Nick Davis play defense? I am not taking anything away from these two young men, it's just they make so many good offensive plays they are easy to spot. When there are so many young men standing on the sidelines, why are the same players in all the time? Especially when the score is so one sided. It wasn't until the middle of the fourth quarter that I saw some substitutions being made.

Manchester has an impressive won - lost record, but I wonder if the teams they are playing present any real challenge. Of course I am only a spectator, not a coach going for a play-off and this is just... my opinion.

- Lois Hochstetler

- Have a parent, older brother or sister go Trick-or-Treating with you.
- Trick-or-Treat with friends. Never travel alone.
- Plan your Trick-or-Treat route ahead of time. Pick streets that are well lit.
- Cross only at corners. Never cross the street between parked cars or in the middle of the block.
- If there is no sidewalk, walk facing traffic.
- Wait until you get home to sort, check and eat your treats.



3241-1098-PS-92

October 20, 1995

To whom may be concerned,

Manchester township fire department just hired a new volunteer employee. Can anyone believe that this person was another man? Probably not, because this small town of Manchester seems to be somewhat discriminative towards a woman, especially on the fire department. I am a twenty-four year old female who has been told for the last eighteen months that I was next in line, and would be the next one hired. I applied in April of 1994, and from this time until the present I have been given many excuses as to why I was not being hired. Isn't this a VOLUNTEER department? I will bet that most people do not know that there is a waiting list to get on the department! The township allows thirty members to be on the department, but when I applied there was only twenty eight, and the township supervisor stated that they only needed and wanted to pay for twenty eight, that was the first of my many excuses of denial.

Wednesday morning I called the fire chief to ask again why I had been denied and he stated that the MAN they hired was more qualified. Now they have qualifications!! The man that they hired is a Ann Arbor firefighter, and an EMT, for goodness sakes why wasn't he needed long ago! I have waited patiently for eighteen months, until this past week I have had faith in this small town of Manchester, and our ever so brave MEN, who risk their lives for others. I probably do not have to tell you that this is clearly a discrimination case. I have done some investigating of other departments in our local area and this is what I have found: Ann Arbor has 10 full-time females, Augusta Township-2, Chelsea-1, Dexter-1, Pittsfield-3, Saline-1, Sumpter-1, Superior-1, Ypsilanti City-1, Adrian-1, Clinton-2, Sand Lake-1. Manchester clearly has none, and for as long as they possibly can will not employ one. Wake up Manchester this is 1995, and woman are equals, treat us like we are!!

Sincerely,
Amy L. Schnearle

McLennan
Landscaping

A personalized professional service

- Design Consultation
- Plant Installation
- Retaining Walls
- Wild Flowers
- Finish Grading
- Shade Gardening
- Hydro Seeding
- Brick Pathways

(313) 428-7005

Travel Services
that GO ABOVE
and BEYOND

1200 S. Main St.
Ann Arbor
930-2250



AAA Michigan

HOME HEALTH CARE, Part 1

by Tracy R. MacDonald RN

The next three articles are a down and dirty explanation of who is eligible for home health care, how it works, what to look for in an agency and your rights as a consumer. This segment will look at who may be eligible to receive home care and how beginning care at home happens.

With the push toward managed care, more and more individuals and their families will be asked to leave the hospital setting earlier. This helps with cost containment of health services for all of us. It also requires responsible physicians, nurses, social workers and health care providers (insurance companies and government agencies) to be responsive to the safe care of patients in the home setting. A virtual army of agencies who specialize in home care have come into existence to meet this need. They will be covered in Part II.

Home care can be appropriate for many differing categories of patient. The least complicated cases are persons such as new mothers who may receive one or several visits from a nurse specialized in answering questions about breastfeeding or

bottle feeding and all facets of typical newborn care. Their primary goal is teaching and easing the anxiety new parents feel.

More complicated cases such as new diabetics also fall into this category. The nurse will help the patient learn and use diabetic diet guidelines, insulin and its administration, how to respond to insulin reactions or complications, special skin care, and glucometers for measuring blood sugar levels. The goal in this category is for the patient and their family or significant others to become independent in their own care with a good understanding of their new medical condition and management of that condition. The new ostomy patient would be another example.

The next category would be patients suffering the after-effects of surgery or trauma, which requires short term treatment. Fracture patients who are bedridden or limited in motion may require help with bathing, cooking, etc. and later physical therapy to return to normal life. A surgical patient may need help changing a wound dressing,

building strength, and daily activities. The goal here is for the patient to remain safe and without complications while recovering.

Once again, teaching plays an important role. Home care providers are specific in what they will pay for and the number of home care visits they will cover. In many cases, the patient will be asked to seek services from outpatient physical therapy or teaching clinics as soon as able. In any event, this too is designed to be short term help.

Another group is the patient with a long-term condition such as a paraplegic or someone suffering from multiple problems of aging - Alzheimer's or Parkinson's - or mental illness. The goals here are to teach both the patient and the family how to achieve the greatest level of independence and safety possible. A secondary goal would be to assist the significant others to deal with the added stress in their lives.

Care may be continuous and around the clock for someone at home alone; or a few hours several times a week to help families with the overwhelming

time restraints of caring for their patient. There are also patients in this group, such as those on dialysis or medications, who are required to receive their care from a licensed professional. In general, providers require long-term home care patients to be home bound.

There is also a large group of patients, often elderly and living alone, who need weekly visits from a Registered Nurse to set up their medications safely and oversee any problems concerning nutrition, fall risks in the home, hygiene and general health issues. These patients are often covered only if home bound.

Lastly, there are those patients who are suffering from terminal illnesses and issues of death and dying. These patients often choose to remain in the home and may need restricted medications to reduce suffering as well as special psychological support for themselves and the family. Hospice based agencies specialize in the care of these patients and many general home care agencies have nurses and staff who see only these clients. They are truly angels of mercy

and can make a great difference for both patient and family in this overwhelming situation.

As we see, there are many persons who fit the guidelines for home health care. Ultimately it is the physician and a team of health care professionals with the patient and family who decide for this approach. Home health care requires a Physician's order and that Physician's continued availability for renewing and changing orders as need arises. Once the care is ordered the Registered Nurse Case Manager becomes the eyes and ears of the doctor.

Space doesn't allow for more than an overview of eligible patients, so I apologize if your situation wasn't specifically mentioned. In Part II how to pick an agency and what to expect from the case manager will be covered. For readers dealing with these difficult situations I can be reached at 428-1482 to help with questions. Please leave a number, and a time most convenient for you, so I can return all calls.

Please feel free to send Tracy new ideas for Partners in Health to the Enterprise.

STEIN ELECTRIC COMPANY, INC.

Licensed & Insured Contractor

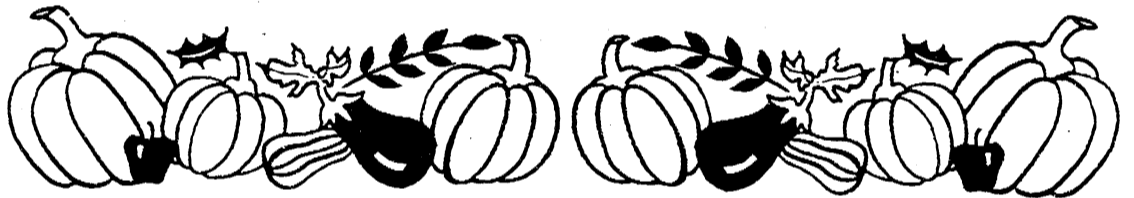
24 Hour Emergency Service

Motor Controls & Lighting

Ag. • Commercial • Industrial
Institutional • Residential
Backhoe & Trenching Services
50 ft. Bucket Truck

(313) 428-9050

Rick Graustein • Manchester, MI



FUND RAISING

Manchester Sportsman Club
8501 Grossman Rd.
Friday 6:45 p.m.

Manchester American Legion
203 South Adrian
Saturday, 7:00 p.m.

Red Mill Gallery

Opening October 28

Come and Visit our New Craft Shop featuring the talents of local artists. Located in the Lower Level of the Manchester Mill
201 East Main Street
Hours: 10:00 'til 5:00 Daily

428-7803



WHISTLE STOP Restaurant

Serving Breakfast all Day
Lunch after 11:00 a.m.
Homemade Lunch Specials

Sit down and Take Out Available
428-1995

New Fall Hours:
Mon., Wed. & Thurs. 7 a.m. - 2 p.m.
Friday - Sunday 7 a.m. - 4 p.m.
closed Tuesday



AT HOME. IN THE COUNTRY.

Whether you're thinking of building or buying a home—or simply refinancing the home you already own—let Farm Credit Services custom build your home loan.

A Country Home Loan from Farm Credit Services offers flexible terms at competitive interest rates. You can select an adjustable rate mortgage with interest rate caps for your protection. Or a fixed rate mortgage with the added security of knowing your payment cannot change for a specified number of years.

So, if you're thinking of making a move, contact your nearest Farm Credit Services office—today.



FARM CREDIT SERVICES
Deep roots, good people, and a will to serve.

313-769-2411

3645 Jackson Road • Ann Arbor, MI 48103

Church Page

BAPTIST CHURCHES

NORTH SHARON BAPTIST CHURCH—Bobby D. Toler, Pastor, Clifford W.S. Whitenburg, Associate Pastor, Sylvan & Washburn Rds-428-7222; SS 10:am; Morning Church 11:am; Eve. Church 7:pm; Weds. Bible Study & Youth Mtg 7:pm

VICTORY BAPTIST CHURCH—Rev. R. Dean Cooper, Pastor; 423 S. Macomb, 428-7506, Sunday School 10:00 a.m.; Morning Worship 11:00 a.m.; Evening Public Bible Class 6:00 p.m.; Wednesday Praise and Prayer 7:00 p.m.

CATHOLIC CHURCH

ST. MARY CATHOLIC CHURCH—Rev. Francis J. Murray, Pastor; Telephone 428-8811; Masses: Monday thru Wednesday, Friday 8:30 a.m., Thursday 7:00 p.m., Saturday 5:00 p.m., Sunday 8:30 a.m. and 10:30 a.m.

EPISCOPAL CHURCH

ST. BARNABAS EPISCOPAL CHURCH - Rev. Jerrold F. Beaumont, OSP, MTh, DD; 20500 Old US-12; Chelsea; Telephone (313) 475-8818; Worship Sundays at 10:00 AM

LUTHERAN CHURCHES

ST. JOHN'S LUTHERAN CHURCH—Austin Road, Bridgewater; Telephone 429-7434; Sunday School 9:15 AM; Worship 10:30. Various mid-week & Bible study groups.

ST. THOMAS LUTHERAN CHURCH—Rev. John Kayser, pastor; 10001 W. Ellsworth Rd., (5miles North and 6-1/2 East of Manchester); Telephone 663-7511; Schedule: Sunday School 9:30 AM; Worship Service 10:45 AM

ZION LUTHERAN CHURCH—Pastor David Hendricks; 3050 S Fletcher Road, Chelsea; Church Office 475-8064, Susan Wiley, Secretary 428-7268. Sunday School 9:15 AM; Worship 10:15AM

UNITED METHODIST CHURCHES

MANCHESTER UNITED METHODIST CHURCH—Rev. Thom Davenport, Pastor; 501 Ann Arbor St. Phones: Parsonage 428-8013, Church 428-8495. Worship 10:30 AM

SHARON UNITED METHODIST CHURCH—Rev. Peggy Paige, Pastor, Corner of M-52 and Pleasant Lake Roads; Church- 428-7714, Parsonage- 428-8430; Sunday School 10:00 AM, Worship 11:00 AM

MORMON CHURCH

CHURCH OF JESUS CHRIST OF LATTER DAY SAINTS (MORMONS)—Gary Spooner, Branch Pres; 1330 Freer Rd, Chelsea; 475-1778; Sacrament 9:30 am; Sun. School, 10:40; Relief Soc, Priesthood & Youth 11:40

NON-DENOMINATIONAL CHURCHES

COMMUNITY BIBLE CHURCH — Pastor Jody Riethmiller; 8400 Sharon Hollow Rd. Telephone 428-8709; Worship Service 10:00 AM; Sunday School 11:30 AM; Wednesday Bible Study & Prayer, 7:30PM. All are welcome!

IRON CREEK COMMUNITY CHURCH—Tom Butterfield, Pastor; English and Sharon Hollow Roads; Sunday School 10:00 AM; Morning Church 11:00 AM; Sunday Evening 7:00 PM

CLINTON ASSEMBLY OF GOD—Rev. Richard Coury; 13300 Clinton-Manchester Road; Phone 517-456-7510; Sunday School 9:30AM; Worship 10:45; Sunday Eve 6:30; Weds Prayer, Bible Study, Youth 7: PM

UNITED CHURCH OF CHRIST

BETHEL UNITED CHURCH OF CHRIST— Rev. Richard E. Hardy, minister, 10425 Bethel Church Road at Schneider Rd.; Phones: Parsonage & Church 428-8000/429-7175; Church Service 9:30AM

EMANUEL UNITED CHURCH OF CHRIST—Rev. Dr. Vincent Carroll, Pastor, Phone: 428-8359; Worship 10:30 AM; Fellowship 11:30 AM

ST. JOHN'S UNITED CHURCH OF CHRIST— Rev. Nancy Doty, Pastor; 12376 Waters Road, Waters and Fletcher Roads, Rogers Corners; Worship and Sunday School 9:30AM

UNITY CHURCH

UNITY CHURCH OF JACKSON—3385 Miles Road, Ackerson Lake, Jackson, MI, 517-764-6900; 11:00 a.m. Sunday Services and Sunday School.

COMMUNITY BIBLE CHURCH

Thursday, October 26: AWANA for children ages 4-6th grade, 6:30-8:30 PM

Sunday, October 29, 1995: Worship Service 10:00 AM; Sunday School 11:30 AM.

MANCHESTER UNITED METHODIST CHURCH

WEDNESDAY October 25: 7:30 p.m. Care and Share

THURSDAY October 26: 6:30 p.m. Scouts; 8:00 p.m. Adult Bell Choir

SUNDAY October 29: 9:00 a.m. Sunday School; 10:30 a.m. Worship

WEDNESDAY November 1: 7:30 p.m. Bible Study

BETHEL UNITED CHURCH OF CHRIST

Wednesday, October 25: 7:00 PM Line Dancing

Thursday, October 26: 6:15 PM Children's Choir; 7:00 PM Youth Choir Plus

Sunday, October 29: 9:30 AM Worship Service; 4:00 PM Reformation Sunday Choir Festival; 7:00 PM Adult Fellowship meeting

Monday, October 30: 7:45 PM Senior Choir

EMANUEL UNITED CHURCH OF CHRIST

Wednesday, October 18: 6:30PM Bell Choir; 6:30PM Daisies; 7:00PM Drawing Class; 7:30PM Adult Choir

ZION LUTHERAN CHURCH

Wednesday, October 25: DEADLINE FOR NOVEMBER NEWSLETTER!

Saturday, October 29: 9:00 AM Sunday School; 10:15 AM Worship

Tuesday, October 31: 7:30 PM Senior Choir

ST MARY CATHOLIC CHURCH

Wednesday, October 25: Chicken & Biscuit Luncheon

Fri., Oct. 27: Children's Choir, 3:20-4:30 pm

Sun., Oct. 29: Father Fisher Council K of C Corporal Communion, 8:30am Mass, K of C Breakfast, after 8:30 Mass at Parish Center Adult Choir, 9:30 & 11:30 am Rel Ed., Pre-school/Kindergarten, 10:30 am

Mon., Oct. 30: Parish Pastoral Council Meeting, 7:30 pm

Tues. Oct. 31: Masses, 8:30 am and 7:00 pm No Religious Education classes for Grades 1-6

Wed., Nov. 1: All Saints (Holy Day) Masses at 8:30 am & 7:00 pm

OBITUARY

Zita L. Bersuder

Zita L. Bersuder, 77, of Bridgewater, passed away on October 20, 1995. Zita was born in Manchester on June 19, 1918, the daughter of Joseph A. and Rose (Scully) Kirk. On February 22, 1941 she was married to Harold G. Bersuder and he preceded her in death on March 11, 1994.

Zita was a member of St. Mary's Catholic Church and was very active in the Choir. She also dedicated over 15 years of service to Interstate Cafeteria Service Co.

Zita is survived by a daughter, Carol and Van Damron of Bridgewater; three grandchildren, Amy, Timothy and Ann Damron; and a sister, Mary Diver of Manchester. She was also preceded in death by two brothers and one sister.

Zita's family received callers at the Jenter-Braun Funeral Home on Sunday with a Rosary service held at 8 PM. Funeral mass was celebrated on Monday from St. Mary's Catholic Church, with Father Edmond VanHoof as celebrant. Interment followed in St. Mary's Cemetery.

In Lieu of flowers, memorials may be made to Mercy Hospice of Washtenaw

SHARON UNITED METHODIST CHURCH

Wednesday, October 25: 10 AM Martha Circle; 6:00-7:30 PM Brownies; 8:15 PM Chancel Choir practice

Sunday, October 29: 11 AM Appreciation Sunday; 4:00-5:30 PM Halloween Party

ST. JOHN'S LUTHERAN, BRIDGEWATER

Wednesday, October 25: Junior Choir, 6:30; Bell Choir 7: PM; Senior Choir 8:30

Thursday, October 26: Prayer Group, 8:30 AM; Sauerkraut Supper, 5-8 PM

Sunday, October 29: Sunday School, 9:15 AM; Worship, 10:30 AM

Tuesday, October 31: Mary martha Circle to Saline Home for Bingo

ST. THOMAS LUTHERAN CHURCH

Sunday, October 29: Sunday School 9:30; Worship 10:45 AM

REFORMATION CHOIR FESTIVAL AT BETHLEHEM UCC, ANN ARBOR

The Covenant Association, Cluster South, of the Michigan-Conference of the United Church of Christ is sponsoring their Thirteenth Annual Reformation Choir Festival. A number of church choirs from the cluster, including Emanuel UCC and Bethel UCC from Manchester, will be participating in this event which takes place on Sunday, October 29, 4:00 p.m. at Bethlehem UCC, 423 South Fourth Avenue, Ann Arbor.

Each participating choir will sing an individual anthem and then join with the other choirs to sing two selections as a combined choir, directed by Mary Sue Moore, Choir Director from Bethel UCC, Manchester and accompanied by Gail Jennings, Organist at Bethlehem. A freewill offering will be taken.

Following the service there will be a reception in the church dining room. The public is invited.



THE CHURCH PAGE IS BROUGHT TO YOU THROUGH THE FOLLOWING SPONSORS

Luke & Barb Schaible	DAN'S WESTSIDE AUTOMOTIVE	Manchester Plastics	WACKER'S GENERAL STORE	
Pilot Metal Products A Division of Pilot Industries	ALBER ORCHARDS	You Owe It To Yourself... To choose a quality retirement. Brooklyn Living Center 151 Constitution Avenue 592-2828 Canton Retirement Centers Inc.	MANCHESTER CAR WASH	MANCHESTER TOOL & DIE
<i>Dr. Charles Lyon, D.O.</i>	Norm & Olga Walz		<i>Hendley & Datsko, PC</i> Attorneys at Law	Manchester Chiropractic Clinic
David Chartrand	S-K Sales, Inc.	KLEINSCHMIDT True Value Hardware	HAROLD BUSS	PAUL & MICHELE KLUWE
MANCHESTER KIWANIS	MANCHESTER MANOR	THE MANCHESTER ENTERPRISE	GENE & GERTRUDE SMITH PINNACLE ENGINEERING	HAARER'S MEETING PLACE

Senior Citizens

Senior News Briefs



by TV Ludwick

We are continuing the 'wild west' adventures of Marion Ahrens at work this past summer in Yellowstone National Park.

"They have an employees cafeteria, the head cooks Doc & Lavern used to own a restaurant in Texas—food's good, I haven't had a bad meal yet (I'm not cooking).

Back in 1925, August 25th, there was a group of people snowed in the lodge. For something to do they decided to celebrate Christmas, so they still follow the tradition without snow. They decorate the store, put Christmas tree in Employees Dining Room & each person buys \$5.00 gift. The 24th we had a Christmas party, sang songs, different ones put on a skit, jokes were told, a roast was given to a couple men and style show. To end the program came Mop Brigade, Betty Ann & I were in it with 5 others, lots of laughs. Then, Christmas Day 8-25, we had a free Christmas Dinner with all the trimmings. 8-31-95 we celebrated New Year's Eve with banana split party after work.

I'm working in the jewelry dept.—me, who hardly ever buys jewelry, I'm learning. Here at Fishing Bridge the altitude is 7792. Our dorms are above the store. We have buffaloes that hang around out in back. I'm not too brave, it sure isn't relaxing to hike, I'm always looking for bear or buffalo.

Another day, I'm on early shift this week. Everyone likes it better. Time sure is going fast. Fishing Bridge closes September 17th. Tourists are slowing down, we're not as busy. We could go work at another location but decided to head for home. We will go see the Teton Mountains & Jackson Hole. We're not sure what route we will be taking. I'm taking Betty back to Missouri to unload her things & she'll re-pack & come back to Michigan with me. I better close this letter or I'll never get it in the mail before I leave. I miss all of you & hope all news will be good news when I get back. Love, Marion".

(We continue her travels.) "Aug. 22-23: First toured mud volcanoes, upper falls & walked down 328 steps to the lower falls. We took some trails (estimated 12 miles). Rained our second day, so we drove to West Yellowstone.

August 29-30: Drove to Gardiner, Montana, stopped

to see Margaret Kemner. Her husband is a Forest Ranger in Gardiner. Margaret grew up in Manchester. Then we drove to Cooke City, Montana & took the roads through the Park. Better roads than going through Montana. We got to Cooke City & decided to stay over. So we each bought a toothbrush & T-shirt to sleep in. Next morning went to Tower Falls, then back to Mammoth Hot Springs, then to Fishing Bridge.

September 5-6: We hiked Mt. Washburn, alt. 10,234, 6.4 miles round trip. We climbed 1400 feet, then we came back & rested. Wednesday, went to Old Faithful, saw it go off twice, and had a tour of the Old Faithful Inn. Well, I have now used all my paper (aren't you glad). See ya—"

Thanks, Marion who sent copies to family and friends, but didn't save a copy for herself! Thanks to Edna Knauss who loaned her copy for publication and saw a lot of this in a previous trip with family (some day I'd like to go, too, how about you?)

Thursday, October 26: Pork chops will be served at 12 noon by our loyal kitchen crew. Come to Emanuel Church Fellowship Hall to taste this great senior dinner. Call in reservations to either

Sharman at 428-8359 ahead, or to Jan at 428-7630 before 10:30 on meal days (each Tuesday & Thursday unless otherwise specified). Stay for bingo at the Center at 12:30. Then, at 6 PM, senior bus pickup begins to attend the Senior Citizens monthly card party which is sponsored by them and starts at 7:30. Call Erna Alber at 428-8707 for your ride.

Tuesday, October 31: Happy Halloween! Our good witch of the south west, Jan, will again have her choice of our 'witches brew', as it is chef's choice today. I'll bet she is already stirring up something special in the 'pot'. come and see (we do enjoy her antics). What a day to come enjoy this meal! And, be sure to watch out for our small fry who will be trick-or-treating when you drive around town as they dart!

Thursday, November 2: All you who are 55 or older and born in November are cordially invited to come for your birthday party today. You are special, get your reservation in. We all will be treated to baked chicken, ala Jan and crew. Where else can you get your birthday dinner for half-price, come join us. Bingo will be played at the Center at 12:30.

We are in the process of getting the November-December Trumpeter 'to bed' at this writing, and you may Pick up your copy at either a senior meal, or at the Center when it is open. Rubena Boelter, our Chairlady, can also be contacted for a copy at 428-8655.

Alzheimer's Association

Alzheimer's Association Family Caregiver's Support Group, Saline chapter, meets on the first Wednesday of each month from 7:00 - 8:30 PM, at the Saline Evangelical Home, Activities Room, 440 W. Russell, Saline. The November meeting will be held on Wednesday, November 1. The video, "Dealing with Alzheimer's: Facing Difficult Decisions" will be shown. The meetings are free and confidential. Contact the Alzheimer's Association at (800)782-6110 or (313)741-8200 for additional information.

AARP

Can you answer these questions? How does the aging process affect your driving ability? Why do drivers aged 55 and over have more accidents per mile driven than drivers aged 30 to 54?

The American Association of Retired Persons, Washtenaw Chapter, invites those who are fifty or older to enrol in their 55/ ALIVE driver education program. The program offers eight hours of classroom instruction, by trained volunteers. Our goal is to refine your existing driver skills and to aid you in developing safe driving techniques.

The program will be offered at the Ann Arbor Senior Center, Tuesdays November 14 & 21, from 12-4 PM. To enrol call the Ann Arbor Senior Center at 769-5911; or Bill Hartigen at 429-9035.

Parkinson Education & Support Group

The Washtenaw Parkinson Education and Support Group will meet Sunday, November 12, 1995 at 1:30 P.M. for refreshments and socializing, to be followed by a video tape on "Healing from Within" from a series with Bill Moyer at 2:00 PM. A group discussion will follow. The meeting will be in the Mission Health System Education Center, Building 5305. Everyone is welcome. For information call 313 930-6335.

ALBER ORCHARDS

Now OPEN Everyday

- 🍏 Fresh Sweet Cider
- 🍏 Apples
- 🍏 Michigan Maple Syrup

Donuts ➔ Pretzels ➔ Caramel Apples
(while supply lasts)

13011 Bethel Church Rd. East off M-52
Open 7 days/week 9AM to 6 PM
428-7758

FEEL LIKE A KID AGAIN!

Enjoy our many fun-filled days with parties, trips, out to eat, cards, movies, special entertainment and events.



Brooklyn Living Center

151 Constitution Ave., Brooklyn, Michigan

592-2828

Ganton Retirement Centers Inc.
"The Finest in Retirement Living"



Make a sound investment in better hearing.

We all joke about our kids not listening to us... but what if your child really can't hear what you're saying? If you think your child might have a hearing problem, scheduling a hearing evaluation by Chelsea Community Hospital's certified audiologist is the surest way to find out.

We can make a big difference in the way your child hears - and that can make a big difference in the way she feels.

Hear better: call 313/475-3924

ReSound AT&T Technology available

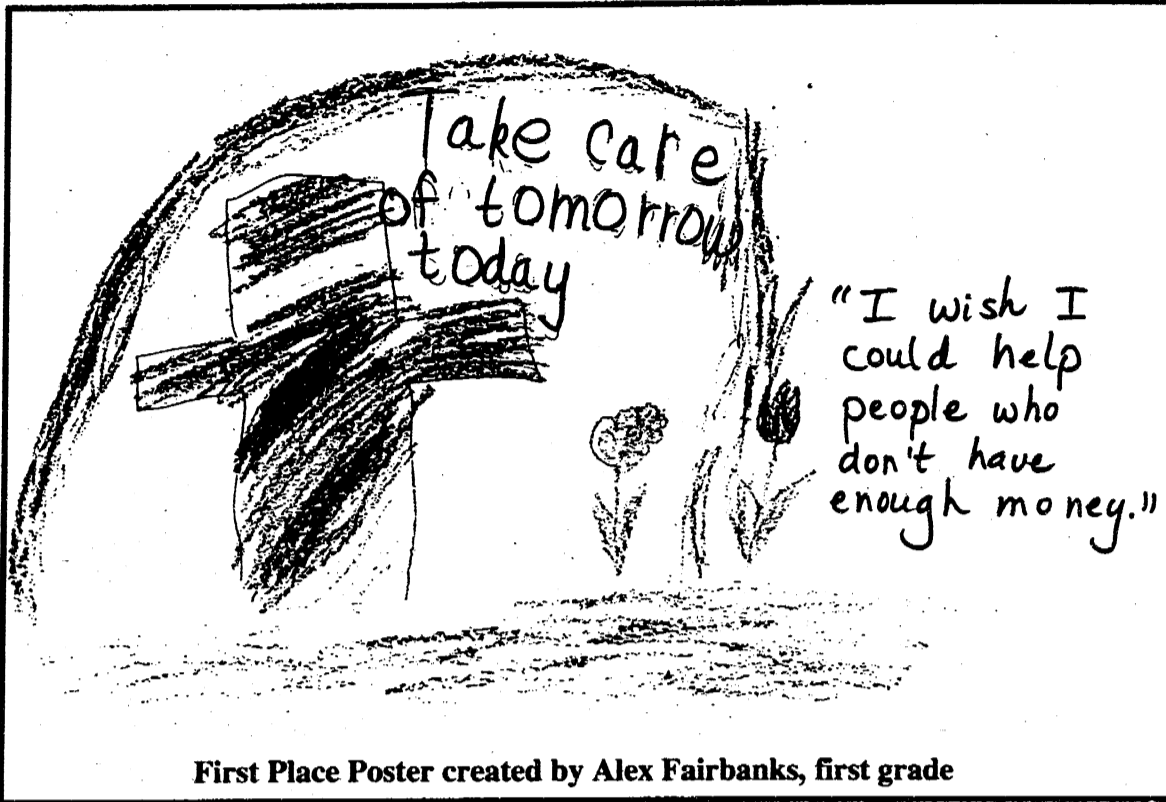


Chelsea Community Hospital

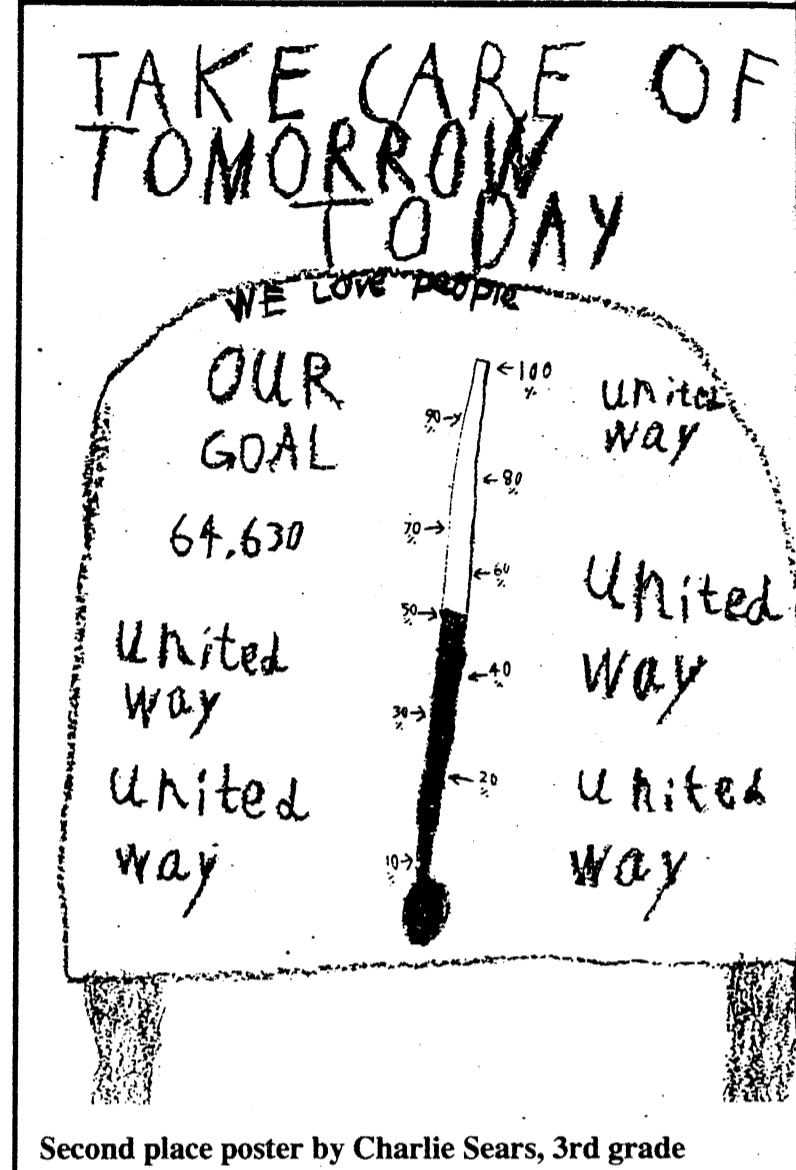
Most major insurances accepted
Senior Health Connection discount 5%
Credit cards and payment plans

"Take Care of Tomorrow, Today"

Klager Kids' Contest Winners



First Place Poster created by Alex Fairbanks, first grade



Second place poster by Charlie Sears, 3rd grade

Kleinschmidt True Value

Donates Poster Contest Prizes to three Klager Kids



Shelley Miller from Kleinschmidt True Value, is pictured with winners Alex Fairbanks and Jamieson Abbot. Shelley is holding Charlie Sears' second place poster, as Charlie was absent that day. First prize was a 20" bike, Second Prize was an AM/FM Cassette Player with headphones, and the Third Place winner received a Power Ranger Slumber Bag.

PREMIER CONTRACTING INC.

Full Service Residential Building & Remodeling
"Let us help you with your building plan"



Lots Currently Available

Ron Milkey
(313) 428-9826

MIDWEST FORD

OUR HOMETOWN DEALERSHIP

510 W. MAIN ST.

428-8343

"Here to Serve"

I would like the opportunity to serve as your new or used vehicle sales consultant. Your business and satisfaction is important to me.

My responsibility doesn't end when your vehicle is delivered - It just begins.

LEON BALL
New & Used Sales



Sales Hours: Mon-Thurs 8:30-8 pm; Tues, Wed, Fri, 8:30-6 pm; Sat 9-3

Read all about it!

Subscribe to The Manchester Enterprise

- keeping up with Manchester's activities since 1867 -

109 E. Main St.
Manchester, MI 48158
(313) 428-8173

in Washtenaw County
\$18

Out of county \$20



Name: _____

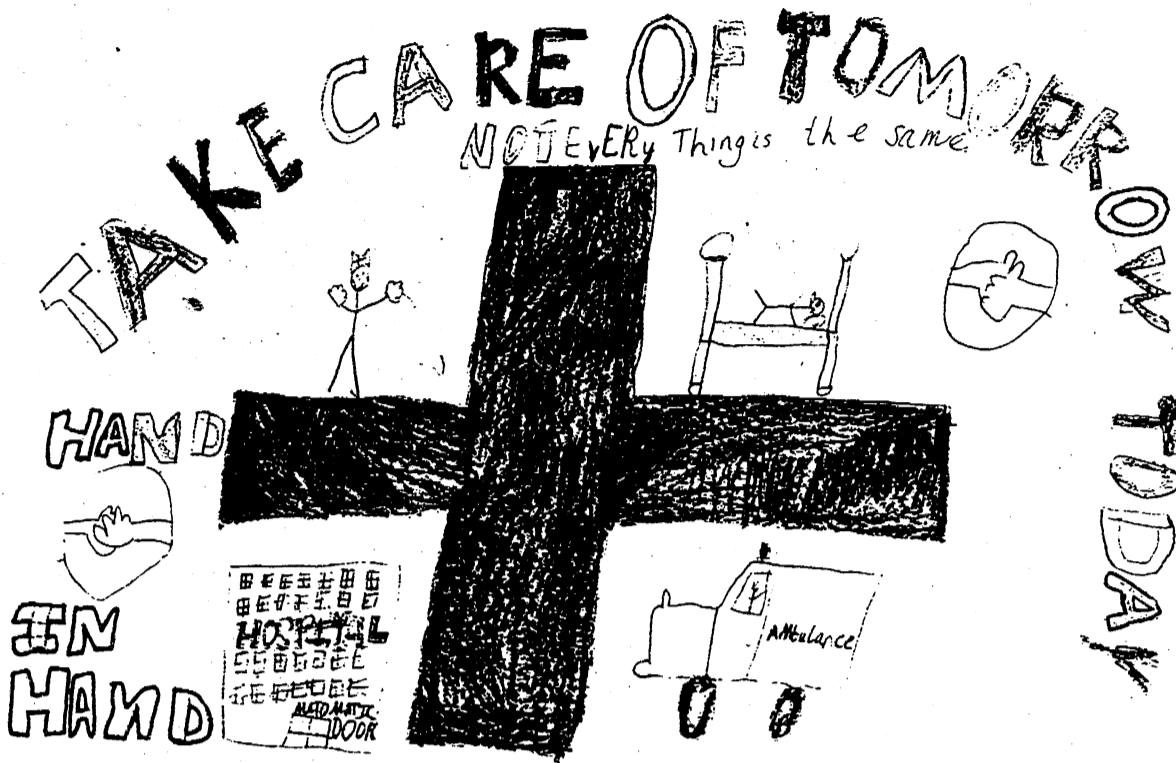
Address: _____

City: _____ State/Zip: _____

Phone: _____

"Take Care of Tomorrow, Today"

United Way Campaign Continues Through October



Third place poster, created by Jamieson Abbot, 4th grader

The Manchester United Way funds the Community Resource Center with \$3,000, which is used to offset the cost of the paid staff, the rental of its offices, utilities, insurance and phone costs. In addition,

the Center receives contributions from the public (\$1,000), the annual banquet at Chelsea Hospital (\$5,500), Manchester Village (\$1,500), Washtenaw County (\$5,000) and other fund raising activities.

Among the services funded are address and phone contact for several local organizations, information, referral and office space. The space at CRC is utilized on various days of each week by several

service oriented organizations including Michigan Employment Security Commission, Samaritan Counseling, Huron Valley Child Guidance, and the Manchester Area Food Cupboard. The Center "...interacts with the Manchester Community Schools and local governments to identify needs of the area." (From the CRC Mission Statement).

This year, the Manchester United Way Board has added Samaritan Counseling Service to the list of local recipients. With the \$1,500 budgeted, the service rents space at the Community Resource Center at a nominal cost, and uses the remainder to supplement counseling costs for low income families. Samaritan Counseling Service of Manchester recently formed an independent, ecumenical board composed of ministers and lay representatives from local churches, to administer services in Manchester.

A professional counselor, Jocelyn Pyett, is in the office each Thursday to provide services to families in Manchester who wish to receive counseling which reflects their faith and belief systems. These services are available at an affordable cost to Manchester residents by calling and making an appointment. Manchester area churches are also underwriting some of the costs of counseling by supporting Samaritan Counseling Services in their budgets.

Hopefully this series of articles has given you some insight into the many ways in which United Way funds serve everyone in our local community. If you haven't done so already, now is the time to sit down and make your generous contribution to the Manchester United Way. You may mail your check to **PO Box 275, Manchester, MI 48158**. Remember to Take Care of Tomorrow, Today - by giving the United Way. - *MJC*

MANCHESTER



Market

Now selling Beer & Wine

Hours: 8am - 9pm Mon - Sat 9am - 7pm Sunday 455 W. Main

Michigan Round White Potatoes

.98¢



Campbell's Chicken Noodle Soup

2 / \$1.00



London Dairy

2% Milk

\$1.99

Jif Peanut Butter

\$1.59



Budweiser

Reg. or Light 12pk cans

\$6.99 + dep

Quarter Sliced Pork Loins

\$1.59 lb.

Sale Prices good thru October 29, 1995

School Lunch Menu

****Menu Subject to Change without notice****

Monday, October 30: Hot dog on a bun; Hash brown patty, dill pickles; pear slices; milk.

Tuesday, October 31 "HAPPY HALLOWEEN: Chicken nuggets/sauce; curly fries; corn; apple juice; donut; Milk

Wednesday, November 1: tomato soup/crackers; folded grilled cheese; vegetable sticks; fruit choice; Milk

Thursday, November 2: Nacho supreme w/all the fixings; corn; chilled peaches; ice juicee; Milk

Friday, November 3: Sir Oliver Pizza; tossed salad/dressing; cinnamon applesauce; cookie; milk

KLAGER PTO MEETING

Tuesday September 26 1995

DRAFT MINUTES (subject to review and modification)

Meeting called to order at 6:20 PM by John Adams, PTO President

PTO Council members present: see attached list of the 1995-1996 PTO Council. PTO members present (non-Council): none
Klager Principal/Teachers present: Yvonne Henry, Linda Klepacyzk, Karin Hanson, Laura Spensley, Mary Fielder
Guests: none

1. **Previous minutes from 8/29/95 meeting were reviewed and two corrections were made.** The minutes were approved by vote.

2. **Treasurer's Report:** Ending balance \$17,753.79 The \$10,000 CD matured on 9/23/95, with earnings of \$121.36 over the summer.

3. **President's report:** a) John Adams briefed those present on the composition of the Senior Dinner and the obligations of Council members. Twenty five members signed in to indicate their desire to be on the 1995-1996 PTO Council. This represents about a 5 member increase over last year. b) The office of Vice-President was not filled. The floor was opened for nominations and Lisa Brinkman was nominated. Lisa was voted in as the new Vice-President.

4. **Committee reports:** a) **Fund-raising** — Lisa Brinkman gave a report on the Frankenthall fall fund-raiser that will kick off on Oct. 18th. The PTO will receive 50% of the sales. Frankenthall is donating a free popcorn machine to the PTO. b) **Assemblies** — no new report. c) **Playground** — Sue Callaway requested that interested council members see her to serve on this committee. Breeda Miller suggested that PTO consider sponsoring a new playground that would be designed by community children. Saline has done this recently, and the project was a great success. d) **T-shirt** — Colleen Dougherty will coordinate the T-shirt and Jacket sales this year. e) **Financial** — Bruce Thomson requested that interested council members see him to serve on this committee. Sandy Thomson suggested that the PTO increase the amount of money allocated yearly by PTO for teachers (Teacher's Wish List fund). f) **Winter Dance** — Sue Callaway will be coordinating and needs volunteers. g) **Senior Dinner** — Lisa Brinkman requested volunteers for the Senior Dinner committee. She will need two third grade parents to head up this committee in the future. This is a 2 yr. commitment. Yvonne Henry requested that PTO consider funding the Senior Dinner in the future. h) **Constitution and Bylaws** — no new issues were raised. i) **Teacher Appreciation** — no new issues were raised. j) **Super Parent Volunteer rep.** - Sandy Thomson gave a brief summary of this year's program. k) **Arts Committee** - Terri Jobkar will continue to coordinate Art Cart supplies. Teachers Laura Spensley and Karin Hanson will act as facilitators for the art program.

5. **Principal's Report:** a) Yvonne Henry reviewed calendar items for Oct. 1995. MEAP testing will be conducted from Oct. 16-27. Two assemblies will be held this month: the Opus Mime on the 20th and 2nd grade Disabilities Awareness on the 25th. Halloween parties are on the 31st. Popcorn Day is the 27th.

6. **Old business:** none

7. **New business:** a) Linda Klepacyzk, music teacher, gave a report on changes in the Klager music program. Changes were necessary to provide a broader musical experience for children, and to spread out activities more evenly throughout the year. A lack of space for the Holiday music programs has been a problem in the past. This year we will have a Kindergarten Valentines program, a grades 1 and 2 Circus in April, a 3rd grade Christmas musical program, a 4th grade recorder concert in January. 4th graders will also entertain at the DARE graduation. A Spring Arts Festival will be held for all the arts. A handout will be available on the new program. Linda requested that PTO fund \$100 for a Johnny Appleseed assembly for the 2nd grade. She also requested \$250 to pay for a 4th grade field trip to see the Nutcracker at UM Power Center. (see below for vote) b) Sue Callaway requested that PTO fund a 2nd grade field trip to see Babes in Toyland - \$375 (see below) c) Cyndy Nye volunteered to chair a Committee to look into organizing a 4th grade trip to see the Holland trips of the past. d) Laurie Carey suggested that more Franklin Spellers be purchased. Teacher Mary Fielder does not have Franklin Spellers in her class. A motion was made to supply two Franklin Spellers for the class. Approved by vote. e) A motion was made to approve as a group the following funding requests: (see above) \$375 for Babes in Toyland \$100 for Johnny Appleseed program \$275 for Nutcracker

The motion was seconded and approved by vote.

Next meeting Tuesday Oct. 24th at 6:30 PM in room

Respectfully submitted,

Brian Zink, Recording Secretary



P.ositive

A.ccommodations

S.timulate

S.uccess

IS YOUR CHILD HAVING DIFFICULTY IN SCHOOL?

HOW TO GET YOUR CHILD ELIGIBLE FOR HELP.

The first nine weeks of the 95-96 school year is almost over. Parent/Teacher conferences are scheduled for the week of November 5. This is a very important time to assess your child's school performance.

If your child is:

- having difficulties with the school work.

- seems uncomfortable about school (or appears sick at bedtime and/or morning before school), or

- is losing his/her self-esteem

- appears to be 'behind' classmates in speech or other areas

- is displaying inappropriate behavior in the classroom or at recess *then talk to your child's teacher(s) about the problems you have noticed.* Maybe you aren't aware of the difficulty your child is having in school, but the teacher will mention that your child is having difficulty.

In either case, it is probably worth considering having your child evaluated by the evaluation team to try to determine the source of the problem.

1. **Referral for evaluation.** Parents or teachers can request an evaluation. Parents should submit a written request to the building principal. Parents can make a referral even if the teacher does not agree that a problem warrants an evaluation.

2. **Notification** - of parents and appropriate personnel. Parents must be notified within 5 working days if teachers have initiated a referral.

3. **Screening** - previous history of evaluation is made.

4. **Consent** - Parents have 30 days to decide if they want to proceed with the evaluation.

5. **Evaluation** - must take place within 30 days of agreement.

6. **Evaluation meeting** -

- parent should be given a written summary of the evaluation for preview prior to the meeting

- a meeting is held to discuss the results of the evaluation, if everyone agrees then go to step 7 - if there is not agreement between parents and school personnel -

- mediation must take place to resolve the disagreement of the results - parents can request an 'outside evaluation' at the school's expense

- hearing - if the disagreement is not resolved by mediation, the next step is a hearing with school administrators, school lawyers, parents, parent's lawyers

- civil suit - if the disagreement is still not resolved, the final step is a state or federal lawsuit - usually based on a violation of civil rights on the basis of race, sex, religion or handicap

7. **The IEP (Individual Education Plan)** - a plan written for the student stating goals for the student, accommodation needed, etc. Must go into effect immediately after the parent signs the IEP.

8. **Implementation** - the education plan is underway and can be changed as often as necessary. Changes can be initiated by school staff or parents.

If you do request or agree to an evaluation for your child, you should receive a handbook (printed

by the WISD) describing the evaluation process in more detail than what is presented here. This material was obtained from a book by Jill Bloom called Help Me to help My Child.

If you need help deciding if your child needs special help or special accommodations in school and you would like to talk with other parents whose children are receiving help and are using accommodation, come to a PASS meeting or call us for more information.

P.A.S.S. is a local parent/student support group. We meet Wednesdays at 7 PM at Klager. Call and leave us a message about what information you need, 428-0738.

SPECIAL PASS MEETING:

Dr. Pat MacQuarrie,
Director of Special

Education for the
Washtenaw Intermediate
School District (WISD),
WEDNESDAY, November 1
7 PM in the High School
Library

**She will inform us about
the services provided by
and the functions of WISD
Dessert and beverages will
be served.**

Faist-Morrow

the Place to Go
for a New or
Used Vehicle

"Where the
QUALITY
Used Cars
Are"

1500 S. Main St.
Chelsea
475-8663

Manchester's 2nd Annual

CHILI COOK-OFF

Saturday - November 11, 1995

at

St. Mary's Parish Center
(formerly K of C hall)

Sampling from 2:00 p.m. - 7:00 p.m. 50c a cup
Beer \$1.00 a glass or \$5.00 a Pitcher

Entry Fee \$5.00 for contestants

1st, 2nd, & 3rd CASH Prizes awarded

All Entry Blanks must be turned in by Nov. 9th at 5:00Pm

Entry Blanks available at:

Manchester Pharmacy, Great Lakes Bancorp
and The Manchester Enterprise

Sponsored by The Manchester Men's Club

Any Questions

Call 428-7786 or

428-8572



SUMMARY BOARD OF EDUCATION

October 16, 1995
NOT OFFICIAL MINUTES

The regular meeting of the Manchester Community Schools' Board of Education was called to order at 7:35 PM. by President Kluwe with the Pledge of Allegiance.

Minutes of the regular meeting of September 18, 1995 and the special meeting of October 9, 1995, were approved as presented.

The treasurer's report was approved with a cash balance as of September 30, 1995 in the amount of \$992,325.08; total bills payable of \$581,807.48.

A parent committee consisting of Karen Hinkley, Cindy Nye, Denise Hyde, and Helen Fisher requested that the Board seriously consider improving the art curriculum at Klager and to provide art at the middle school level. President Kluwe suggested that the Board committees discuss this issue and add it to the November board agenda.

Dave Fisher of our auditing firm Riemann Robson Company presented the district's financial audit for the 1994-95 fiscal year.

Craig Vitale was appointed Varsity Boys Track Coach for the 1995-96 sports season.

Brian Barnard was appointed Junior Varsity Boys Basketball Coach for the 1995-96 sports season.

Waiver of membership was granted to Amber Clouse and Mark Kueffner to attend Columbia Central for the 1995-96 school year.

Stacey Heldt was accepted as a tuition student for the 1995-96 school year.

The Board authorized payment for the MASB Board Certification courses for Bruce Abbott.

The Board approved the Middle School Band Boosters request that the 7th and 8th grade band students go to Toronto to see *Phantom of the Opera* January 24, 1996.

Linda Klepacyk presented an update to the Board on the music program at Klager. Due to the severe overcrowding at the Holiday Program some changes were needed to insure the safety of the children and the audience. The following schedule was well received by the Board.

Kindergarten - Valentine Program in early February

First Grade - Circus every other year, holiday program on alternating year

Second Grade - Circus every other year, holiday program on alternating year

Third Grade - Holiday musical (year that 1st & 2nd do circus), spring musical on alternating year

Fourth Grade - Recorder concert in early January, Dare Program, spring arts festival in May

Dianne Schwab, President - Manchester Kiwanis Club; Katie Tolen, President - Manchester High School Key Club; and George Brown, Kiwanis District Representative presented an overview of the Key Club including its

goals and activities.

Superintendent Niedzwiecki presented an update of the building projects at Nellie Ackerson and Klager. The project at Nellie Ackerson is on schedule to begin in the spring of 1996 and will be ready for students for the 1996-97 school year. The project at Klager is also scheduled to begin in the spring and will be ready for occupancy by January 1997.

Superintendent Niedzwiecki informed the Board that our preliminary enrollment count as of the October 6, 1995 count day is 1241. This figure represents an increase of about 50 students from the October count last year.

The district wide in-service held October 13, 1995 was a success. The certified and administrative staff program focused on technology. The support staff received CPR training through the American Red Cross. There are now 53 support staff certified in CPR.

It was announced that Andre Kormendi is a National Merit Scholarship Semi-Finalist.

Manchester Tool and Die has donated a sidewalk to the high school. This sidewalk will run along the front of the building along Main Street. Construction will begin in the spring.

The meeting adjourned at 9:04 PM.

School Mrs. Miller's Class Makes Pizzas at Ollie's



The fourth graders got to make pizza as thanks for their decoration of Ollie's Halloween window



Sydni Johnson & Diana Steele are enjoying their creative collaboration!

MHS FFA Competes

Earlier this year, the Manchester FFA Green Hand Conduct of Meetings Team went to Onsted to compete with eight other schools from around Michigan.

The contest was held at Onsted High School in classrooms set up for the competition. The competition consisted of conducting an 8-10 minute meeting in front of judges. After the "meeting", the judges would ask questions about what we did.

Manchester's FFA team came in fourth place with a silver medal. The winning team members were Mary Ann Fillyaw at President, Marie Haeussler at Vice President, Jon Hochstetler at Advisor, Shane Neigebauer at Reporter, Aaron Macomber at Sentinel, and Hal DeLongchamp as treasurer.

- Shane Neigebauer, reporter

HOMEOWNERS! STOP
living from paycheck to paycheck!
LOANS BY PHONE
SAME DAY APPROVAL!
Statewide Service. Call Toll Free: 1-800-968-2221
AAA MORTGAGE

FWC "Friends Who Care"
♥ Quality Home Health Care Services ♥
Services available 24 hours a day - 7 days a week

- R.N., L.P.N., Home Health Aides • Screened & Licensed Staff
- Companion Aides & Homemakers • Inquires are Confidential
- Complete Adult & Pediatric Care • Medicare/Medicaid & most insurances accepted

Call 428-1242
for a free, at-home consultation

NEW & USED CAR SALES

Stop in
Take advantage
of the rebates on
model year-end
Clearance Prices!

475-1800 or 475-1301 Neil Horning

PALMER THE AWARD WINNING DEALER
Michigan's Oldest Ford Dealer

FORD
MERCURY

Cevin's Collision

Free Estimates
and Pickup & Delivery

4520 Wolf Lake Rd.
Grass Lake, MI
517-522-4755
open Mon-Fri 8-5
Sat 9-12

* Paint Jobs * Frame Work
* Windshields * Sand Blasting
* Welding * Striping
* Undercoating

Napoleon
Sand Beach Rd.
Cevin's
4520
Wolf Lake Rd. Grass Lake
Austin Rd.
ASE
CERTIFIED
Manchester

Reinhart
Charles Reinhart Company Realtors

DEBORAH ENGELBERT
Sales Associate
22 Million in Sales

Office: 313/971-6070
Residence: 313/475-8303
Fax: 313/747-7880

2452 East Stadium Blvd.
Ann Arbor, MI 48104

Announcements

Town Meeting To Be Held on Health Improvement Plan - Washtenaw

If you are interested in the future of health care and Community Health issues, you will want to attend the Town Meeting at 7:00 PM on October 26 at the St. Mary's Parish Center on Madison Street (Formerly the K of C Hall).

The 90 minute meeting is for public partici-

pation. Make your needs heard! Interact with your neighbors and others in the community to make a positive impact on health issues for the future of our community.

For more information and/or to request transportation or child care for this event, please call the Community Resource Center at 428-7722.

Chelsea Lions sponsor Haunted House

Ghouls, goblins and things that go boo! That's what the Chelsea Lions Club will be providing at the Ninth annual Haunted House.

The Haunted House will be at the Chelsea Fairgrounds one block west of the corner of Old US-12 and M-52 on Thursday, Friday, and Saturday October 26-28 from 7-10:00 PM

"Our goal has always been to provide a professional scare, yet not leave the little ones in nightmares," said Lion Doug White. "Over the years we've visited numerous haunted houses learning new techniques in production then bring the best of those ideas to Chelsea for our show."

Construction of the Haunted House has always been a challenge for the service organizations. "With the availability of the Chelsea Community Fair barn, we've been able to add some larger and more elaborate scenes. We work hard each year to make sure our 'victims' have a good time." Tickets for the haunted house are available at the door for only \$4.00



For all ages!!
At the Library
Wed. October 25
7:00 PM

It's not just Cash Management Checking. It's checking that manages to make you real cash.



Higher interest on higher balances. Unlimited check-writing.

cash
MANAGEMENT
CHECKING

Why let a good deal of money lie around in low-interest checking, savings or money-market accounts when it could be earning more in our Cash Management Checking account? The portion of your balance over \$5,000 earns a higher return tied to the Fed Funds Rate.* You can write all the checks you want and use your ATM card anywhere. And it's FDIC insured. So stop by your local First of America office or dial 1-800-222-4FOA, Mon.-Fri., 8 a.m.-9 p.m.; Sun., 9 a.m.-1 p.m., to open your account by phone.

\$50,000	4.54%
\$25,000	4
\$10,000	

Example APYs as of 9/24/95. Check with us for current rates.

FIRST OF AMERICA Bank

*The interest rate for the portion of the balance above \$5,000 is tied to the weekly average Federal Funds Rate less not more than one percent, which, as of 9/24/95, is 4.81%. The portion of the balance \$5,000 and below earns an interest rate determined by the bank, which, as of 9/24/95, is 1.15%. The APY ranges from 1.15% to 4.73% on \$100,000. Annual Percentage Yields are subject to change after account opening. Fees may reduce earnings. Equal Housing Lender. Member FDIC. © 1995, FOA Bank Corporation. If hearing impaired, TDD available from 9-5 EST at (800) 289-4614. 6 Offer available to individuals and sole proprietors only.

The Twentieth Century Club Studies "Exchange Place"

Now in its 96th year of existence, the Twentieth Century Club, chose the history of Manchester in the year 1871 for its course of study. At its monthly meetings the club will focus on a poem found in the Historical Collection of the Manchester Township Library. The six page poem is followed by eleven pages of historical notes.

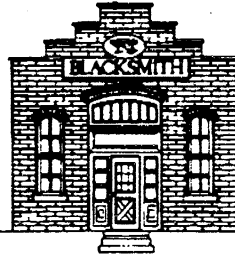
The poem, written by Nathaniel Schmid in 1921, describes the village of Manchester in 1871. Mr. Schmid was a graduate of Manchester High School in 1904 and Died in Toledo in 1965 at the age of 78. The author's preface to the work states, "It is the intention of the writer who went to the village of Manchester, Michigan on the 12th day of April, 1871 and remained there for 47 years, to give a list of the persons who were there at the time engaged in the business affairs of the village, also the professional men, mechanics and some of the older citizens, thinking it might be of interest to the present generation.

"In those days fifty years ago, business was conducted in a much different style than now. We knew not anything about telephones; automobiles, electric lights or water works and seldom had traveling salesmen call upon us with their samples."

The October meeting was held at the home of Marge Scully. Following a brief business meeting, Jean Little and Elizabeth Beuerle presented the first section of the poem. This portion describes Exchange Place from the river to the Goodyear House. Using a panoramic photograph of Main Street, Mrs. Little located the businesses detailed in the poem. We learned of "John Bauer who sold all kinds of booze", and "the drug store run by Van Duyn, Blosser and Lynch who sold books, notions, groceries and snuff by the pinch." Mrs. Beuerle also shared photos and newspaper clippings from her personal collection.

Following the presentation, members shared their memories of Manchester over dessert served by co-hostesses Marge Scully and Kay Schöök.

Manchester Area Historical Society



The Manchester Area Historical Society held its monthly meeting on Tuesday, October 17, at the Blacksmith Shop. The following officers were elected for the coming year:

First Vice President Diane Huff; Second Vice President Howard Parr; Secretary Betty Cummings; Treasurer Lou Vogel; Assistant Treasurer Mary Smolinski; Trustee (Luminaria) Forest Walz; Trustee (Swainson Room) Loring Ebersole; Trustee (Building) Tom Walton; Im-

mediate Past President Reno Feldkamp.

A variety of items were brought in for the program, which was Show and Tell. Mary Smolinski's father served in the Marines as a tail gunner on an Avenger during World War II. She brought several newspaper clippings from 1944 with pictures of the aircraft. She told two stories about her father's exploits, one involved his shooting the tail of his own airplane. Some of the other items included: a cull or un-

finished baseball bat made in the handle factory (Leon Green), a German military regimental beer stein (Loring Ebersole), a goblet and spooner of pattern glass in the Lincoln drape design (Linda Ebersole), and a doily made by tying knots like fishermen tie their fish nets.

The Swainson Room at the Blacksmith Shop will be dedicated at the November 21 meeting. Attorney General Frank J. Kelley will be the featured speaker. The public is welcome to attend.

King's Volunteers

The King's Volunteers will meet October 26th at 1 PM at the Church. There will be installation of new members. Marie Pratt will be hostess and also present devotions. We will then work on projects for Mott Children's Hospital. Visitors are always welcome.



Palustrine Farm Flat-Coated Retrievers Border Collies Welsh Ponies

Allison MacArthur-Whitman and her children, Owen and Beth, would like to extend a heartfelt Thank You to the following friends, neighbors and businesses for their assistance and concern about our well being over the long hot summer of 1995. Their help with transportation, sanitation, excavation, litigation, confrontation, and communication, will always be remembered with appreciation...

- *Midwest Ford - Especially Tim Schwartz, Tim Tomshaney, Henry Heise, Norma Fillyaw and Leon Ball. Their Concern over us having safe and reliable transportation made us feel like family.... I love my Ford Ranger!
- *Woodbrook Computers - Jim and Connie Achtenburg (and little Connie). This is the best "dog deal" I have ever made, swapped a puppy for a used computer and got three new friends in the deal....
- *Mann Real Estate - Jim Mann, thanks for lots of free advice, and a thorough property inspection.
- *B.R. Watson Builders - Barney for estimates and money saving advice. And a Special Thanks to Dan for cutting, bailing, and putting up hay on shares, backhoe work, shovelling, fencing, etc., etc....
- *Samonek Trucking - Jim and Carol Samonek for digging my soil inspection "test hole"....
- *Davis Excavating & Cook Trucking - Septic Field work
- *Edward D. Jones & Company, Tecumseh - Thanks to Mike Savoia.
- *Rita Halasz CPA - Thanks for your advice, efforts on my behalf.
- *Ameritech Cellular of Southfield - Thanks for the Safety/Hardship financial waiver - my mobile phone is my lifeline to my kids while I conduct inspections in the Raisin River Watershed for the DNR (oops...now we are the DEQ)
- *Washtenaw County Environmental Services - Jeff Kremarik, Public Sanitarian for his valuable guidance.
- *John and Carolyn Depp - for bedding supplies for my foaling mares.
- *Dave and Darlene Scovell - for an emergency supply of hay and grain.
- *Randy and Linda Uhr - for helping me put the riding mower back together and showing me the basics of "mower maintenance"
- *Jim and Dee Montgomery (and their kids) - for being there for my children and me....
- *Joyce Kafferly M.D. (and her staff) - for her medical care and concern for my well being.....
- *Pastor Thom Davenport of the Manchester United Methodist Church and Father Francis Murray of St. Mary's Catholic Church for their insight, concern and guidance.....
- *And last but not least "Mother Virginia Murray" of Pinecroft Farm, Tecumseh, who knows the mold from which I've been cast...who keeps reminding me to not just survive, but to succeed!

APPRECIATION PARTY

Who: Manchester Residents who consider themselves our Friends.

When: 6pm - Whenever, Saturday October 28, 1995

Where: Palustrine Farm

7521 Lamb Road

What: Music, Chili, Chips, Pop, Beer, Wine (otherwise BYO)

RSVP: 313-428-9896 so we know how many people to expect

People

Army Hometown News

Keith A. Sande has joined the United States Army under the Delayed Enlistment Program at the U.S. Army Recruiting Station, Jackson, Mich.

The Delayed Enlistment Program gives young men or women the opportunity to delay enlistment into the Army for up to one year before reporting to basic military training.

The enlistment gives the new soldier the option to learn a new skill, travel and become eligible to receive as much as \$30,000 toward a college education. After completion of basic training, soldiers receive advanced individual training in their career specialty.

Sande, a senior at Columbia Central High School, Brooklyn, will report to Fort Benning, Ga., June 6, 1996, for military basic training.

He is the son of Gerald J. and Debra K. Sande of 11751 Noggles Road, Manchester.

Local Alma College Students Receive Scholarship Awards

Alma College has recognized the academic achievements of its returning students for the fall of 1995 with scholarship awards totaling more than \$4.5 million. More than 65% of the approximately 1,000 upperclassmen will receive these merit based scholarships, recognizing outstanding academic achievement. In total, Alma College gives \$8 million in merit-based and need-based awards to its student body of about 1,400.

Sharon Bihlmeyer was the recipient of a Trustee Honors Scholarship, which is

awarded to students who demonstrate superior academic achievement and national test scores, and the Alma College Religious Leadership Award, which is a competitive award based on ranking in an essay competition and financial need for students who are members of the Presbyterian Church USA.

Gregory Walter was also the recipient of a Trustee Honors Scholarship. Both Sharon and Gregory are graduates of Manchester High School. Congratulations to each of you!

Bethel Church's Honorary CROP Walkers



Laura Sutton, Center, CROP Coordinator for the Manchester walk, presents Holly Martin (at Laura's right) and Ellie Senkewitz (at Laura's left) with their CROP appreciation certificates. Ellie and Holly were Bethel's "Honorary Walkers" for the entire congregation, and the proceeds of \$1,025 were credited to them. In addition to their appreciation cards, both Ellie and Holly received a commemorative bell made from melted down shell casings gathered by Cambodian children.

The Cambodian people are representative of the assistance provided by Church World Service, the CROP WALK people. Their hopes for peace and a better way of life are being assisted by Church World Service.

Congratulations to Holly and Ellie (and their moms, Jean Martin and Denise Kuebler, also pictured) for the great job they did in helping CROP stop Hunger worldwide!

Bruce A. Bates D.D.S.

500 Galloway Drive, Manchester, Michigan

(313) 428-8277

Complete Family Dentistry

• Adults & Children Always Welcome as New Patients.

We Accept Dental Insurance

VISA • MasterCard • Discover

Healthcare Creditline Dental

Gentle Dental Care

Relaxing Gas Available Upon Request

Sweet 16 this girl has turned
Driving carefully she has learned.
Cross Country Running she has found,
Faster, Faster, she is bound.

Your family's proud
We'll yell it loud:
Pam Preston, You're great
First Place You Rate!



Good
Luck
GO
DUTCH



Megan Cornell, daughter of Chuck & Kathy Cornell, is the lucky winner of Mr. Jack O. Lantern at the Manchester Pharmacy

★ ★ ★ ★ ★ ★ ★ ★
★ 517 - 265 - 3055 ★
24 Hour Movie Hotline
ADRIAN CINEMA 6
3150 N. ADRIAN HWY.
Shows Before 6 PM \$3.50

FREE to kids 14 & Under
Sat & Sun Only 1:00 & 3:00
ARABIAN KNIGHTS
Next Weekend -
Magic in the Water PG

VAMPIRE IN BROOKLYN R

Daily: 4:45, 7:20, 9:30
Sat & Sun: 1:20, 4:45, 7:20, 9:30

COPYCAT R

Daily: 4:30, 7:00, 9:40
Sat & Sun: 1:50, 4:30, 7:00, 9:40

HOW TO MAKE AN AMERICAN QUILT PG13

Fri - Thurs: 5:00, 7:15

NEVER TALK TO STRANGERS R

Daily: 9:30
Sat & Sun: 3:00, 9:30

SEVEN R

Daily: 4:40, 7:10, 9:45
Sat & Sun: 1:10, 4:40, 7:10, 9:45

NOW & THEN PG-13

Daily: 5:15, 7:30, 9:45
Sat & Sun: 1:45, 5:15, 7:30, 9:45

POWDER PG-13

Daily: 5:10, 7:40, 9:55
Sat & Sun: 12:45, 2:50, 5:10, 7:40, 9:55

FRIDAY, OCT. 27 - THURSDAY, NOV. 2

\$1 PROPANE TANK INSTALLATION!

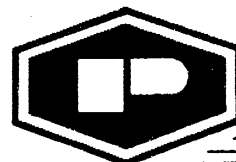
INCLUDING:

- Life-time lease of propane tank. *
- Up to 30 feet of outside gas line.
- Installation of pressure regulators.
- Safety inspection of complete gas system.
- Light appliances if necessary, and check operation.



*Some restrictions - Call for details

Ask About Our
PRICE PROTECTION
Promotion!



Pennington
GAS SERVICE

"Count on us to keep the heat on!"

CALL TODAY!

Morenci	9155 W. Weston Rd.	(800) 365-5599
Stockbridge	13400 M-52	(800) 274-5599
Fenton	7119 Old 23	(800) 964-2266

Around Town

Halloween Festivities

Manchester High School Key Club and the Kiwanis Club of Manchester are sponsoring the Halloween Costume Judging Contest on Tuesday, October 31 at the Gazebo on Main Street.

Put your lights on for trick or treaters between 5:00 and 7:00 PM. Costume Judging will be at 7:15 PM.

Categories for costumes are: Ugliest, prettiest and Most Unusual. First, second and third prizes will be given in each age group from preschool through the 6th grade. One prize will be given for the most outstanding costume.

Cider and donuts will be available for children following the costume judging. In case of rain, the event will be held at St. Mary's Parish Center.

Happy Haunting Around Town!



Blosser... continued from page 1

papers are no longer in existence. Our Enterprise has an enviable record as the oldest weekly publication in the County, and Mr. Blosser's own record of 72 years in the same publishing business is not likely to be duplicated.

Mat Blosser's modesty of self did not extend to his alter-ego, the Manchester Enterprise. Even an article written by his daughter, Margaret, for Jane Palmer's History of Manchester Township, which is entitled, "Mat D. Blosser and a Story of the Blosser Family" concerns the birth and publication of the Manchester Enterprise much more than it does the personal life of Mr. Blosser. It is in what others have written about him, and in his own writings, that we find the essence of his character.

Early on in his career, Mat Blosser made a name for himself in the publishing world. He was an early member of the Michigan Press Association. A clip-

ping from the Chicago Newspaper Union is indicative of the regard with which he was held by his peers:

"Mat D. Blosser continues the presiding genius of the Manchester Enterprise... Mr. Blosser regards his paper with an affection which leads him to do his "level best" for it on all occasions, and the result is such as he has a right to be proud of."

And a prophetic clipping from the Brooklyn Exponent in 1884: "The Manchester Enterprise completed its eighteenth year last week. It is a neat sheet...the news columns of the Enterprise are always filled with well written articles and sparkling locals. Blosser is a vigorous writer, bold and outspoken in his views. May it long continue under his careful and intelligent direction."

We at today's Enterprise are still proud of Blosser's vision and the traditions for which we stand. We look forward to serving the community well into the future.



120 W. Middle
DOWNTOWN
CHELSEA
475-1900

MANCHESTER Varsity Jackets

Special Autumn Sale!

\$114.⁹⁹

Holloway



Through November 10th with this Coupon

Also in Stock

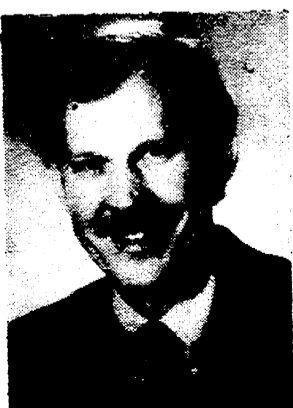
Dexter, Stockbridge, Chelsea,
Grass Lake, Saline, Huron,
Pioneer, and Gabriel Richard
Varsity Jackets!

ORTHODONTIST

RAYMOND P. HOWE
D.D.S., M.S.

515 S. Main Street
Chelsea

(313) 475-2260

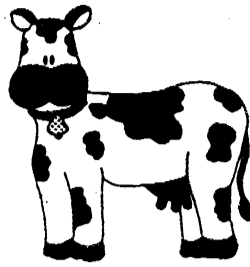


**EMANUEL CHURCH
HAUNTED HOUSE**

Friday, October 27 & 8 to 10:30 P.M.
Saturday, October 28 \$3.00 per person
Sponsored by Emanuel's Sr. Youth Group

FUN HOUSE
Emanuel's Fellowship Hall
8 - 9 pm
for ages 3 - 8 years
Sponsored by Emanuel's Jr. Youth Group
324 W. Main





Manchester Varsity Cheerleaders 2nd annual 50/50 "Cow Plop" Citrus Bowl Fund-raiser. \$10.00 a ticket. If you do not have your ticket yet call the High School at 428-7333. The event will be held at Chi Bro Park, on October 28, 1995 at 2:00 pm. Come see this unique and fun project that generates funds to send the Varsity Cheerleaders to Florida and the Citrus Bowl.

Sula Darlene Jeffers

ATTORNEY AT LAW
150 E. Main Street
P.O. Box 625
MANCHESTER, MI 48158

(313)-428-8190

PUMPKIN FESTIVAL

Saturday, Oct. 28th

11 A.M. to 3 P.M.

Chi-Bro Park

PUMPKIN CARVING CONTEST



11 am to

3 pm

Judging at 3pm

We will provide a pumpkin, carving knife and the fun FREE to all who carve on the premises.

Categories will be: preschool, 5-7, 8-10, 11-13, 20-59 and 60 & over

There will be prizes awarded for the first three places in each category.

Children 6 and under must be accompanied by an adult

Pumpkin Seed Spitting Contest

1:00

Apple Bobbing Contest

1:30

FOOD, FUN, MUSIC TOO!

Rain Location -

St. Mary's Parish Center

CALAMITY JANE'S

Your Happy Haunting Halloween Shop

Pick-A-Trick

- Joke Center

Twinkler's

- Fun Flashing Pins

Disguise "Boo"-tique

- for Frightfully Fun Times

Window Peepers

- for Your Windows or Car

Eyeball & Skeleton Candles

- when Aglow Blood I Flow

Earrings, Pins, & Necklaces

- fun for You to Wear



Hand decorated Halloween Suckers

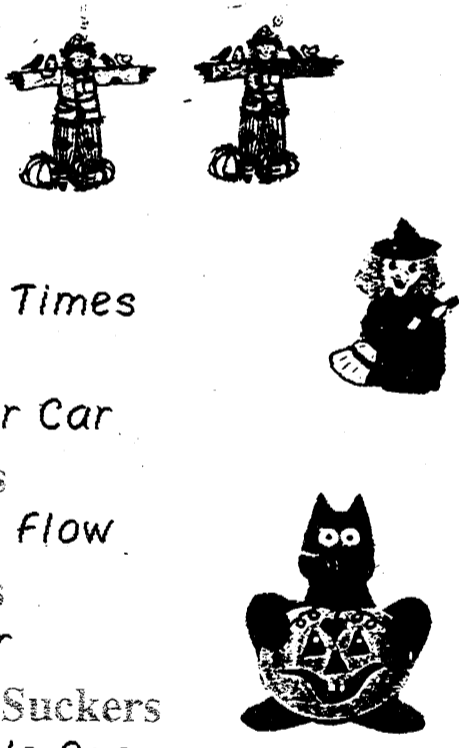
- for the Special Little Ones

Scarecrows, Witches, Ghosts & Pumpkins

- to decorate your home this Haunting time of year.

Stop in and Broose Around!

109 E. Main  Mon - Sat 10-5  428-1122



Buy your tires now to qualify for the 1995 "Big Buck" contest!

60 West Main Mon-Fri 9-5 Sat 9-5
428-9455



TRICK OR TREAT FUN AT MANCHESTER PLASTICS

BRING YOUR LITTLE GOBLINS BY FOR SCARY FUN & TASTY TREATS ON HALLOWEEN NIGHT BETWEEN 5-7PM.

HAPPY HALLOWEEN FROM MANCHESTER PLASTICS
500 W. MADISON - MANCHESTER

THE MANCHESTER ENTERPRISE

Second Section

October 26, 1995

Manchester Enterprise Sports Coverage

Dutch Varsity Shut Out Grass Lake Warriors

The rain stopped but the wind picked up as the Grass Lake Warriors came to Dutch territory.

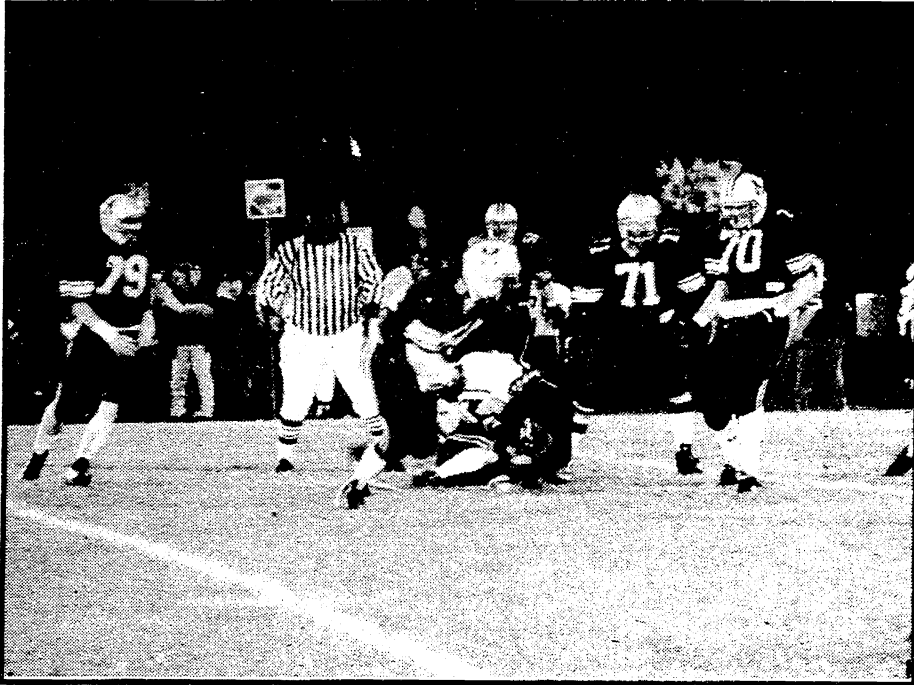
Manchester kicked off and Grass Lake started their drive. It was short lived, however, as the Warrior quarterback under great pressure from #50 Mike Mann, threw a pass and it was intercepted by #70 Justin Porter.

#21 Zach Maghes then ran it in for the touchdown, and #22 Trevor Schleicher kicked the extra point. Manchester led 7 - 0.

It was all downhill for Grass Lake after that. You had to feel sorry for the Grass Lake team. Once they put a team on the field they only had five extra players on the sidelines.

The next Manchester touchdown came when #3 Nick Davis ran in from 8 yards out. The kicked extra point was good. The Dutch now led 14 - 0. That ended the first quarter.

The second quarter was highlighted by a touchdown run by #3 Nick Davis, but the kicked extra point was no good. The next Manchester



touchdown came as #12 Aaron Garrett ran it in and the kicked extra point was good. Manchester now led 27 - 0. With one minute left in the first half, Grass Lake seemed to come alive. Their drive not only got them past the 50 yard line for the first time, but they made it all the way to the 5 yard line. They could not convert, and at half time the score stood at Manchester 27, Grass Lake 0.

What a beautiful sight as the 7th and 8th grade band members joined the High School band. The three bands together gave them 101 members. Not only did they look good, but they sounded great. The senior band members and their parents were honored.

The Warriors' bad luck continued in the third quarter as #54 Bryan Duvall intercepted a Grass Lake pass. This led to #12 Aaron Garrett's 2 yard run for a touchdown. #22 Trevor Schleicher kicked the extra point and Manchester led, 34 - 0.

#21 Zach Maghes was the next Dutchman to intercept a Grass Lake pass and he ran it in for the touchdown. #22 Trevor Schleicher kicked the extra point. The score: Manchester 41 Grass Lake 0.

#36 Steve Spurr ran for 6 yards for the final Manchester touchdown. #22 Trevor Schleicher kicked the extra point and the game ended with the score, Manchester 48, Grass Lake 0. -LH

Cross Country Results

The Cross Country team held a dual meet with Addison at the Somerset Beach Campground on Tuesday, October 10th. The weather was sunny and mild and while both guys and girls teams posted a loss, teach team posted two runners in the top ten.

Nick Weidmayer finished in fourth place with a time of 19:40, and Art Gleason finished seventh with a final time of 20:43. Following up were Brad Kemner in 12th at 21:47; Eli Bragg in 14th at 22:10; and Lin Harris sixteenth at 23:01. Cross country guys now have a 1-6 record.

Girls results showed Pam Preston in fourth place with a time of 22:33 and Rebecca Koffman in tenth at 24:52. Shortly behind was Jill Weidmayer in 12th at 25:09, Ahja Zang 13 at 25:18; Jennie Sahakian 17th at 28:01; Dana Richards 18th at 28:02; Marie Haussler 19th at 28:56; and Jessica Richards 22nd at 31:46. The Cross Country women hold a 3-4 record.

On Saturday, October 14., the Gabriel Richard Booster Club sponsored their 11th Annual Cross Country Invitational. Manchester men placed 11th out of 16 teams participating with a

team score of 301. A total of 90 men participated in this meet, with Manchester's Nick Weidmayer the first Dutch runner over the line in 30th place with a time of 18:48. Competition was stiff in this meet with many more experienced teams from larger schools. Eli Bragg finished 61st with a time of 20:07; Art Gleason 63rd at 20:15; Brad Kemner and Severin Ritter 73rd and 74th with times of 21:10 and 21:12, respectively, and Lin Harris in 79th at 21:35.

The Women's team fared better at this meet, placing fourth among 12 teams, with a total of 62 women runners. Pam Preston finished in sixth place with a final time of 21:42, and Rebecca Koffman 20th place at 23:00. Jill Weidmayer came across the line in 31st place at 24:17, followed by Ahja at 24:30; Jennie at 25:34; Dana at 25:38 and Marie at 26:45.

Watch the Enterprise next week for last Thursday's Conference Meet results. This coming Saturday will be the Regional meet and the entire team will be participating. On November 4th, the season will conclude with a State meet, in which any qualifying Manchester runners can compete.

-MJC

Varsity Football Crossover Game

Saturday, October 28
7:30 PM at Homer H.S.

Manchester Vs. Union City

A Student Bus will leave from the High School.
Tickets will be available at the gate in Homer.

JV Dutch Grounds Grass Lake

The Grass Lake Warriors were no match as the Manchester Dutchmen went to Grass Lake and took control.

The "Awesome Offense" includes yardage gaining runs by #44 Kirk Horodeczny, #12 Jake Ford, #30 Nick Niehaus, and #86 Eric VanBogelen. The offensive line that helped make those plays included #87 Keith Dettling, #60 Matt Laskowski, #84 Jim Hall, #20 Derek Hanselman and #80 Mike Eversole. This Dutch offense dominated the first half.

#44 Kirk Horodeczny ran in for the Dutch first touchdown. The 2 point conversion was no good. #86 Eric VanBogelen got the call for the next Dutch touchdown. This time the 2 point conversion was good and the Dutch led 14 - 0.

#44 Kirk Horodeczny ran in for the next touchdown. #10 Mike Meranuck's pass to #30 Nick Niehaus was good for the 2 points. Manchester now led 22 - 0.

It was #44, Kirk Horodeczny, who ran in for the final touchdown. #89 Terry Coleman lined up to kick the extra point. The snap was high, Terry scrambled and then tried to pass. The pass was incomplete but the play was very exciting. That would be the end of the scoring as Manchester led 28 - 0.

The Warriors were trying to put a drive together when #12 Jake Ford stopped it by intercepting a Grass Lake pass. That would end the first half.

The "Dangerous Dutch Defense" this week comes together with, #72 Chris Kemner, #36 Nolan

Westcott, #82 Shane Neigebauer, #56 Lee Kothe, #66 Jon Hochstetler, #48 Mike Haskin and #80 Mike Eversole. These young men had some bone crushing tackles.

The second half found #14 Justin Turk taking over the quarter back duties. Most of the third quarter and all of the fourth quarter had some very nice plays but no scoring for either team. At times the Warriors gained more yardage by Manchester penalties than by their own plays.

Next week the JV Dutch host Morenci. This is the last game of the season for this team. If you haven't come out before, consider this an invitation to see the team I believe will be next to head to the Silverdome.



JV Dutch Show their "Awesome Offense"

Sports Coverage

Sports Photo Journal



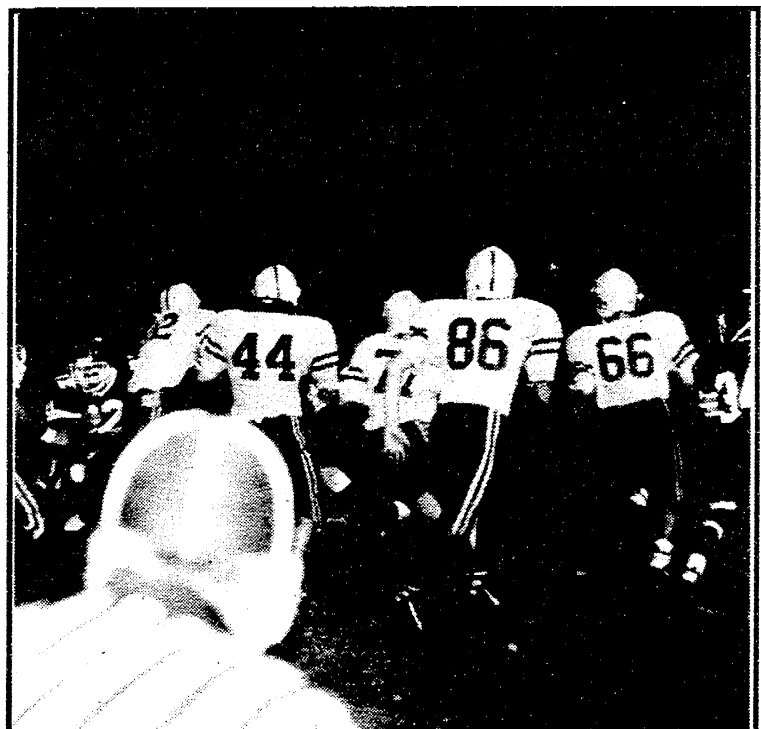
CITRUS BOWL BOUND CHEERLEADERS Keep up their exuberant spirit at the sidelines. Watch for more details on their upcoming Second Annual Cow Plop Contest which will raise funds for their trip to Florida in December!



Also keeping a close watch on the sidelines are Bobby Hayden and Paul Schulte who attend every home varsity game.



Aaron Garrett rushes for a quick 2-yard TD at Friday's Varsity game



DANGEROUS DUTCH DEFENSE at the JV game Thursday

THE MONSTER MASH IN B MAJOR



THE BRIARWOOD YOUTH POPS ORCHESTRA
October 27 - 28 • 4 & 7pm • October 29 • 2 & 4pm • October 31 • 7pm

BRIARWOOD

SIGNS

NEWS

Manchester Equestrian Team Results

Correction: Darci Hock and Stacey Burmeister were undefeated in the two-man relay team instead of Marie Haeussler and Darci Hock. The incorrect information was included in the October 12 issue.

MANCHESTER TOWNSHIP ORDINANCE NUMBER 39

An Ordinance Regulating The Extraction Of Sand Gravel And Other Earthen Materials

The Township Of Manchester, Washtenaw County, Michigan, Ordains:

Section 1. Name

1.01 This Ordinance shall hereinafter be known and cited as Manchester Township Mining Ordinance.

Section 2 Purpose

2.01 Manchester Township recognizes that sand, gravel and other earthen deposits within the Township's land area are non-renewable natural resources necessary and beneficial to the welfare of its inhabitants and the surrounding regional area. To provide for the utilization of these resources in a manner compatible with nearby residential areas, to protect human health and the environment, and to insure complete restoration for another land use at the conclusion of the extraction, it is necessary to regulate and provide procedures and standards for mining and extraction of earthen materials and for the restoration of the land at the conclusion of the extractive operation. These regulations are required because such mining operations and the related activities can cause unique and substantial impacts upon the environment and the welfare of adjacent properties and the community as a whole. They can disrupt the environment, impair the water quality and supply, cause noise nuisances, dust nuisances, damage the roads and create conditions that are dangerous to Township residents. Mining operations can also leave land in a condition that is unsightly and dangerous.

Section 3. Exemptions

3.01 This ordinance does not apply to the following:

A. The ordinary and necessary grading of land for the tilling and cultivation of soils for the growing of crops.

B. The ordinary and necessary grading or excavation for the construction of buildings or structures or related septic system on the lot under a permit from the Township.

C. Any removal of minerals of less than five hundred (500) cubic yards per calendar year.

D. Excavation within a public right-of-way, within public roads or drainage easements.

Section 4. Definitions

4.01 Mineral Extraction - The mining, quarrying, excavation, or other removal or processing of sand, gravel, soil, or other minerals from the mineral extraction site.

4.02 Processing - The washing, sorting, crushing, aggregating, grinding, blending, mixing, or cutting of mined material.

4.03 Site - The entire real property that is the subject of the application.

4.04 The terms "applicant", "owner", and "operator" shall include the owners, tenants, lessees, agents, servants or assigns.

4.05 A mineral extraction permit does not allow other uses including but not limited to on-site processing of material from off-site asphalt, cement or other manufacturing operations of any nature.

Section 5. Permit Required

5.01 It shall be unlawful for an owner, leaseholder or any other persons or entities who own, manage, lease or otherwise occupy the site of the extractive operation to conduct any extractive operation without first having complied with and having obtained the necessary zoning permits pursuant to the Manchester Township Zoning Ordinance and having obtained the permit required by this ordinance. Submittal for these permits to Manchester Township may be concurrent.

5.02 Any party having an interest in the land, including the owner, leaseholder, and operator, shall be equally responsible for complying with the requirements of this ordinance. Each party having any of the interest mentioned above, shall have the responsibility of taking all necessary precautions and actions to prevent the violation of this ordinance.

5.03 No person who has been issued a permit pursuant to this ordinance shall engage in activity contrary to the terms of the permit or contrary to the terms of this ordinance.

Section 6. Application For Permit

6.01 Filing Of Application - Applications for the extractive permit shall be filed with the Township Clerk by the owners and leaseholders, if any, of the land proposed for extractive operations. The application shall be promptly forwarded to the Township Planning Commission by the Clerk. Each application shall be accompanied by a fee to compensate the Township for its administrative expenses in reviewing, processing and conducting the necessary investigations before granting or denying the permit.

6.02 Amount of Application Fee - The amount of the application fee shall be Five Thousand (\$5,000.00) for the first ten (10) acres and One Thousand (\$1,000.00) for each additional ten (10) acres or fraction thereof included on the application including all required setbacks. The application fee shall be for all contiguous land owned or leased for the purposes of extraction. Any additional lands not contiguous or to be added at a future date shall require a separate application. Applicant shall also reimburse the Township within thirty (30) days of receipt of invoices for all reasonable expenses incurred by the Township with respect to experts retained by it to review and process the application.

6.03 Information and Data Required - The following data and information shall be required in and with the application for a permit:

A. A legal description of the property;

B. A list of any deed restrictions appearing in the chain of title;

C. A list of names and addresses of persons, firms or corporations having legal or equitable interests in the property;

D. A two-foot contour interval topographic map of the site, including the proposed locations of access

drives, parking and loading areas excavation equipment and existing streets, buildings, and drainage facilities located within two hundred (200) feet outside of the perimeter of the site;

E. An aerial photo showing the property and adjacent areas;

F. A hydrogeological analysis, prepared by a Registered Professional Engineer, demonstrating no significant impact to existing private water supply wells within the influence of site dewatering operations. The hydrogeological report shall include test pumping data at the site and analytical computations used to assess potential site dewatering impacts. The hydrogeological report shall determine the direction and rate of ground water movement, the upgradient and down-gradient water quality, aquifer characteristics (when soil dewatering is planned, or extraction is planned to extend within 20 feet or less of the highest recorded groundwater level), extent of dewatering influence, and impact on surrounding water supply wells. All monitor wells installed shall be retained for future monitoring and be constructed to Type I production well standards of the Michigan Department of Public Health.

The report shall also demonstrate the effect the proposed operation will have upon the watershed of the area. If water bodies are to be created, the anticipated permanence of such, depth of any lake and other pertinent data;

G. An environmental impact statement that assesses the operation's impact on the natural features flora and fauna on the property which is to be the subject of the extractive operation and upon the surrounding area;

H. A statement of compatibility with surrounding uses;

I. Excavation methods, extraction equipment, depths and drainage methods to be used on the site;

J. Dust control plan;

K. Estimated amount of material and types of material to be taken from the site;

L. Site clearance methods and debris clean-up;

M. Soil erosion, control methods;

N. Treatment of ponded or surface water;

O. Anticipated Operating hours;

P. A map showing truck routes and/or private easements to the site;

Q. The estimated average and maximum amount of gravel, sand, or other minerals to be removed each year of the plan for mineral excavation;

R. Evidence that a bond or security deposit has been supplied to the Washtenaw County Road Commission in an amount sufficient for maintaining the truck haul route during the term of the license until reclamation has been completed;

S. The estimated average and maximum number of trucks per day that are to haul minerals from the site each year of the plan;

T. A site map (from both aerial and cross-section perspective) di-

vided into cells and timing of anticipated cell development that shows:

1. Existing site improvements including buildings, drives, wells, and drain fields;

2. Location and type of materials for visually screening the site including berming and any other screening plans;

3. Delineation of entrance, exit and haul routes to the Township boundaries;

4. Location of land uses/natural resources and public right-of-ways within 500 feet of the operation;

5. Fencing, and other security measures including signage;

6. Setbacks;

7. Location of proposed structures and utilities;

8. Location of sediment ponds and drainage diversions and discharge points;

9. A complete description of proposed pollution and erosion control measures;

10. Location and description of structures and stationary and/or portable equipment to be located on the site during mining operations;

11. Location and description of soil types;

12. Tree areas and other natural features to be preserved;

13. Locations, sizes and depths of test wells for monitoring water quality as may be required based upon conclusions of studies submitted with permit application.

U. Michigan State Fire Marshall and/or Michigan State Police permit for the on-site storage or transfer of fuels; or a written indication from the applicable agency that a permit is not required.

V. Copy of permit from the Michigan Department of Natural Resources (DNR), or letter from the DNR showing that a permit is not required for the proposed mining or reclamation by the:

1. Inland Lakes and Streams Act, being P.A. 346 of 1972, as amended.

2. Goemaere-Anderson Wetland Protection Act, being P.A. 203 of 1979.

W. A restoration plan prepared by a professional engineer or registered landscape architect. All restoration operations shall be performed in accordance with the restoration plan approved by the Manchester Township Planning Commission. The restoration shall be completed within one (1) year of the end of the extractive operations.

The restoration plan shall provide the following information:

1. Boundary lines of the property and dimensions and bearings of the property lines correlated with the legal description;

2. Location and extent of all natural features to be retained after extraction operations, including but not limited to wetlands, streams and wooded areas;

3. The slope of all restored areas;

4. Proposed completed topography at contour intervals of not

more than two (2) feet;

5. A schedule integrating the areas of progressive rehabilitation with the final restoration plan;

6. Proposed ground cover and other plantings to stabilize the soil surface and to beautify the restored areas;

7. A description of the methods and materials to be used in restoring the site; and

8. A sketch plan of the restored site when restored. A landfill or other disposal or refuse site is not a suitable or satisfactory use.

X. A proposed surety bond, irrevocable bank letter of credit in satisfactory form, or security deposit in an amount sufficient to guarantee restoration of the site. In fixing the amount of such security the Manchester Township Planning Commission shall take into account the size and scope of the proposed excavation, probable cost of rehabilitating the premises upon default of the operator, recommendation of appropriate consultants, estimated expenses to compel the operator to comply by court decree, and such other factors and conditions as might be relevant in determining the sum reasonable in the light of all facts and circumstances surrounding each application.

6.04 Issuance Or Rejection Of The Permit - The Manchester Township Planning Commission shall, once a complete application is submitted and fully reviewed, act by resolution within 60 days, on the submitted permit based upon the following:

A. Approve the permit based on the following findings:

1. The applicant can comply with this ordinance;

2. The operation will not adversely affect the health, safety, and welfare, of the residents of the Township;

3. The site will be restored so it is safe and harmonious with surrounding land uses.

4. The necessary fees, bonds, security deposits and evidence of insurance have been submitted.

5. The proposed operation will not adversely affect the water table or water quality or supply of any surrounding land.

B. Disapprove the permit based on one or more of the following findings that the applicant has failed to demonstrate that:

1. The applicant can or will comply with this ordinance; or

2. The operation will not adversely affect the health, safety, and welfare of the residents of the Township, or impair the environment; or

3. The site will be restored so it is safe and harmonious with the surrounding land uses; or

4. The proposed operation will not adversely affect the water table or water quality or supply of any surrounding land.



C. Conditionally disapprove the license until the applicant submits revised document(s) providing evidence that the permit should be approved.

D. Extend the period of review for an additional 30 days upon request by the petitioner when additional review is needed.

6.05 Issuance of Permit

If a permit is approved, the Manchester Township Planning Commission shall issue the permit in duplicate upon receiving the required fee, irrevocable bank letter of credit, or security deposit, and proof of insurance. One duplicate original permit will be provided to the applicant, and the other will be maintained by the Township.

6.06 Form of Permit

The permit shall be prepared in duplicate originals and signed by the Township Supervisor and Township Clerk and contain the following:

A. A full description of the operation permitted by the permit based on approved plans and drawings.

B. A full description of the restored site based on the approved plans and drawings.

C. Dates for the completion of the operations and the completion of restoration.

D. The dates for which the permit is valid based on the continual restoration schedule approved by the Manchester Township Planning Commission.

E. Signed commitments by all parties having an interest in the land and the operation that they will comply with the ordinance and the permit, and that the permittee will reimburse all legal, engineering, consulting, and investigation costs incurred by the Township after establishing that a violation has taken place.

F. That it remains subject to required annual inspections by the Township's designated agent and payment of designated fees as specified by this ordinance, and reimbursement of the Township's cost for monitoring to determine compliance with the permit.

G. All required attachments to the application.

6.07 Compliance With Future Amendments to Ordinance - Any permittee shall be required to comply with the provisions of any future amendments to this Extraction Ordinance.

Section 7. Right of Entry

7.01 The Township, through its agents, shall have the reasonable right to enter any private property, upon notification to the owner/operator, to conduct the necessary inspections while reviewing the application. The Township shall also have the right to conduct the necessary periodic inspections to determine any violations of provisions of this ordinance or conditions of the permit. Refusal to permit that entry shall result in rejection of the application or revocation of the permit.

Section 8. Ongoing Operational Fees

8.01 Ongoing Fees - In order to reimburse Manchester Township for its costs incurred in enforcing the provisions of this Ordinance and monitoring the performance of the permittee, the permittee shall make quarterly payments to Manchester Township in an amount equal to five cents per ton with respect to each ton of sand, gravel or other earthen material removed from the site. The payment by the applicant to Manchester Township shall be made on or before March 31, June 30, September 30, and December 31 of each year the permit for the extraction operation is in effect. The amount to be paid to Manchester

Township shall be based upon the quantity of materials removed from the site during the previous quarter. Funds remaining after enforcing and monitoring the provisions of this Ordinance shall be placed in an escrow fund, established by the Township, along with any security deposit furnished by the permittee.

Upon approval of the Planning Commission, the amount of the security may be reduced by the ongoing fees deposited in the escrow fund if the Planning Commission determines that the remaining security will be adequate. Upon approval of the Planning Commission, payment from the escrow fund may be made to permittee upon proof of partial restoration of the site. Such payment shall not exceed the cost of the restoration and shall not reduce the escrow fund below the amount needed to provide security. The Township may withdraw funds from the escrow account for enforcing and monitoring the provisions of this Ordinance, to repair and maintain roads or other public facilities damaged by the permittee's operations, or to restore the site if the permittee fails to restore it as required by this Ordinance. When the Planning Commission receives proof of complete restoration of the site, any funds remaining in the escrow account that are not needed for enforcing and monitoring the provisions of this ordinance shall be paid to the permittee.

8.02 Annual Report Of Material Remedies - At the end of each calendar year, and at the date of termination in the final year of operations, the applicant shall provide a written report detailing all operations and activities conducted within and on the site including the following information:

A. An annual aerial photograph of oblique perspective depicting entire property holding where the extraction operation is located. All activities on the site shall be identified and labeled on the aerial photograph.

B. All rehabilitation accomplished during the past year on the site shall be depicted on the aerial photograph.

C. A schedule depicting the type of rehabilitation that is anticipated on the site for the next year.

D. A List of all equipment located on the site, either of permanent or temporary nature.

E. The amount and type of material mined during the past year and a percentage estimate of material left to be removed from the site.

F. Certified test well information for the site.

An annual inspection date for Township officials to visit the extraction site shall be determined at the meeting of the Manchester Township Planning Commission where the report is presented.

Section 9. Other Permits - The applicant shall obtain and file with the Manchester Township Clerk copies of all other permits required by other units of government before the commencement of any extractive operation.

Section 10. Financial Guaranty And Indemnity Insurance

10.01 Excavation and Restoration Plans - The Manchester Township Planning Commission is authorized to approve the manner and order of restoration of proposed new excavations. To assure faithful restoration of the excavated area, the applicant shall deposit with the Township, an irrevocable bank letter of credit in satisfactory form, or security deposit in an amount sufficient to guarantee restoration of the site. In fixing the amount of such security, the Manchester Township Planning Commission shall take

into account the size and scope of the proposed excavation, probable cost of rehabilitating the premises upon default of the operator, recommendation of appropriate consultants, estimated expenses to compel the operator to comply by court decree, and such other factors and conditions as might be relevant in determining the sum reasonable in the light of all facts and circumstances surrounding each application.

The Township Board of Trustees may approve of the release of portions of a security deposit to pay for completed restoration. The Board of Trustees may approve a reduction in the amount of a letter of credit upon receipt of evidence that part of the restoration has been completed. The security deposit and/or the letter of credit shall be returned to the permittee following complete restoration. If restoration has not been started within 6 months after the end of extraction operations or has not been completed within one year after the end of extraction operations, the Township may draw on the letter of credit or use the security deposit to restore the site.

10.02 Site Insurance - The applicant shall provide a site specific liability insurance policy of not less than \$5,000,000.00 per incident for all liability claims arising out of the site. The adequacy of this amount shall be subject to yearly review by the Manchester Township Planning Commission. The liability insurance is to cover property damage for surface and/or subsurface occurrences and bodily injury in an amount and form approved by the Manchester Township Board of Trustees, naming Manchester Township, its elected officials and appointed officials as additional named insureds and provide a copy of this policy to the Township Clerk. Said insurance shall provide an endorsement that provides that the general aggregate limit of the operator's commercial and general liability applies separately to the site. Manchester Township must be sent a notice of intent to cancel the insurance not less than 30 days before the cancellation. Failure of the operator, or any persons, firm or corporation named in the policy to maintain the insurance shall be cause for immediate revocation of the permit.

Section 11. Specific Operating Requirements

All persons or firms engaged in the activity of mineral extraction shall comply with the following regulations.

11.01 Establishment of Setback lines - Before commencement of extraction operations on the site, 4" X 4" white painted posts, a minimum of five (5) feet in height, shall be placed along the designated setback lines around the site. Such posts shall be placed at a distance, not to exceed three hundred (300) feet from each post. The posts shall be placed at intervals so that from the line location of any post two additional posts are visible.

11.02 Setback - Excavation, washing and stockpiling of extracted material shall not be conducted closer than, three hundred (300) feet from any road right of way, five hundred (500) feet from any existing residence, and not less than two hundred (200) feet from any other property line of the site. The setback area shall not be used for any use related to the extractive operation, except access roads and public notice signs identifying the use as an excavation. Greenbelt plantings and landscaping shall be provided in the setback area as required by the Manchester Township Planning Commission. Said setback may be varied by the

Township Planning Commission when the outer boundary of the site abuts a body of water. In granting said variance, the Township Planning Commission shall establish a specific setback so as to secure public safety.

11.03 Placement of Processing Plants - Any processing plant and all equipment and structures for sorting, crushing, loading, weighing and other operations, shall not be located closer than two hundred (200) feet from any property line, three hundred (300) feet from a public highway, measured from its centerline and five hundred (500) feet from any existing residence.

11.04 Stockpiles of Topsoil - Stockpiling of topsoil from the site may take place within setbacks that are not along boundaries of the site adjacent to an existing residence or along a public highway if granted by the Township Planning Commission.

11.05 Access - All means of access to the property shall be from major or secondary thoroughfares and shall not be from residential roadways.

11.06 Fencing - Before the commencement of any extractive operations, a 10/47/6 fence (standard farm type fence) shall be erected around the perimeter of the active extraction site and maintained in good condition until excavation and mining operations have been completed. A lockable gate shall be provided at all access points from the public road to the extractive operation. Said gates shall be closed and locked at all times except during the permitted hours of operation.

11.07 Signs - The Township Planning Commission may require the posting of "Keep Out - Danger" or similar signs, every one hundred feet along the entire perimeter fence.

11.08 Noise, Vibration and Air Pollution - Any noise, odors, smoke, fumes, or dust generated on said site by any digging, excavating, loading or processing operation and borne or able to be borne by the wind shall be confined so as not to cause a nuisance or hazard on any adjoining site or public road. The noise generated by the operation shall not at any one time exceed the maximum allowable decibel level as established by the United States Bureau of Mines at any adjacent property line of property not owned by the operator.

11.09 Pollution of Waters - The removing of materials shall not cause pollution of any body of water or subsurface watercourse.

11.10 Natural Drainage - The operations and related activities shall not adversely affect the natural drainage of the other properties in the area.

11.11 Access Roads - All access points shall be paved for a minimum of three hundred (300) feet into the parcel from the edge of the public road.

11.12 Slopes - Finished slopes of the banks of the excavation shall not exceed four feet horizontal to one foot vertical. Where ponded water results from the operations, slopes must be maintained and extended into the water to a depth of five (5) feet. Said slopes shall be completed as the work in any one cell of the excavation is completed. The time for completion of said slopes shall not extend beyond one (1) year's time from the date of beginning the restoration, provided that the Township Planning Commission may extend the above one (1) year period to such longer period as satisfactory under the circumstances. Sufficient top soil shall be stockpiled on the site so that the entire area, when excavation operations are completed, may be

covered with a minimum of six (6) inches of top soil, and that such replacement of top soil shall be made immediately following the termination of excavation operations. To prevent erosion of slopes, all replaced top soil shall immediately be planted with grass or other ground cover acceptable to the Township Planning Commission.

11.13 Elevation of Plant Site - Any processing plant shall be located within the excavation area, at a point lower than the general level of the surrounding terrain, to reduce its visual and sound impact.

11.14 Seeding of Stockpiles - Stockpiles of stripped top soil and/or overburden shall be seeded with grass or other ground cover materials to prevent erosion.

11.15 Domestic Water Supply and Domestic Sewage Disposal Systems - Before the issuance of the permit authorized by this ordinance and the commencement of the extractive activities on the site, the applicant shall obtain approval in writing from the Washtenaw County Health Department or other governmental agency having jurisdiction of the matter for the on-site domestic water supply and domestic sewage disposal systems. A copy of this permit with the plans for the systems shall be furnished to Manchester Township.

11.16 Testing of Domestic Wells - Where the extractive operation is to occur below grade level, the operator shall be required, before any excavation occurring below grade level to perform a written certified pump test of all domestic wells within one-half (1/2) of a mile of the perimeter of the property. Said tests shall determine the draw down and the capacity of the well in gallons per minute and other pertinent information determined by the expert. The costs of said tests and analysis supplied shall be verified by the Township Engineer. All costs shall be borne by the operator.

11.17 Markers shall be placed upon all highway orientated extraction trucks with initials of the company and not more than a three (3) digit number on each individual truck, on the rear of each tractor-train, white background, black letters and numerals, letters and numerals at least twelve (12) inches high, and must be clean when entering and leaving the site.

11.18 If site dewatering is planned or becomes necessary, an impermeable groundwater protective barrier wall shall be installed around the entire perimeter of the affected area. Any such required wall shall have a maximum hydraulic conductivity of 1x10⁻⁷ cm/sec and shall be a minimum of 36 inches thick. The barrier wall shall extend from the surface elevation of the site down to and be keyed into (at least 36 inches) an impervious clay confining layer with maximum hydraulic conductivity of 1x10⁻⁷ cm/sec. To be used as a floor barrier, the underlying clay layer must be a minimum of six feet in thickness and continuous across the site.

Section 12. Blasting

No blasting shall be allowed at any time as part of any extraction operation.

Section 13. Hours of Operation

13.01 Extractive Operations - Extractive and processing operations shall be permitted only between the hours of 7:00 AM and 5:00 PM, Monday through Friday, and between 7:00 AM and 12:00 PM on Saturday.

Section 14. Other Provisions

Local Government

13.02 Transporting - No transporting of aggregates or any materials from the site shall be permitted prior to 7:00 AM and after 5:00 PM, Monday through Friday, and prior to 7:00 AM and after 12:00 PM on Saturday.

13.03 Repair Of Equipment - Repair of equipment on site shall be permitted as allowed under the terms of this ordinance.

13.04 Sunday Operations - There shall be no extractive operations or transporting of aggregates permitted on Sundays or the official holidays of New Years Day, Memorial Day, 4th of July, Labor Day, Thanksgiving, or Christmas.

Section 14. Public Roads

14.01 The operator shall be responsible for all public roads upon which any trucks haul materials to and from the site. The operator shall maintain these public roads in a safe and drivable condition at least equal to that which existed before the beginning of extractive operations. Further, the operator shall clean all spillage and/or trackage of material, dirt, rock, mud and any other debris carried onto any public roads by trucks coming to or from the site or by other equipment. This cleaning shall occur promptly after the spillage or trackage of the material has occurred.

If a haul route is approved by the Washtenaw County Road Commission for the site for class "A" loads, permittee shall only load materials onto trucks coming to or leaving the site on a route specifically approved by the Road Commission. The foregoing shall not prevent permittee or its customers from delivering materials from the site to locations in the Township.

Section 15. Landscaping

15.01 Berm - As soon as it is practicable, except where an entrance is indicated, the operator shall have completed construction of a berm, seeded to prevent erosion, around the entire perimeter of the site. The berm shall be a minimum height of at least ten (10) feet, measured from the elevation of the nearest road, and shall have an outside slope not to exceed one (1) foot vertical drop for each four (4) foot horizontal. The berm shall be adequately maintained. The location of the berm shall be as noted in the plans submitted with the application for the permit. Where the operation is adjacent to a private landowner, the operator shall construct a drainage swale to prevent surface water from running off of the berm onto said adjacent properties.

15.02 Unexcavated Areas - Unexcavated areas shall be left in such a condition so as to ensure growth of vegetation, soil stabilization and erosion control. Topsoil of a quality equal to that occurring naturally in the area shall be replaced, if necessary, to a depth of four (4) inches on unexcavated areas.

15.03 Seeding and Tree Planting - On the top of and outside slope of the berm and for other areas where seeding is required, the operator shall engage in fertilizing and sowing seed in an approved manner. The trees shall be planted on the berm as shown in the plans submitted with the application. If a tree or other landscaping dies, it shall be promptly replaced by the operator.

Section 16 Restoration and Reclamation

16.01 Removal of Structures, Etc. - Upon cessation of the extractive operations by abandonment or otherwise, the operator, within a reasonable time not to exceed twelve (12) months, shall remove all structures, buildings, stockpiles and equipment; provided that buildings and structures which have a function under the reclamation

plan, which can be lawfully used under the requirements of the zoning district in which they will be located under such a plan, may be retained, with the written consent of Manchester Township.

16.02 Time for Reclamation - Reclamation shall be completed by the operator within twelve (12) months after cessation of the extractive operation, whether cessation be by abandonment or otherwise.

Section 17. Dumping of Materials on Site

17.01 No material of any kind, including but not limited to soil, sand, clay or gravel shall be brought from elsewhere onto the site of the extractive operation unless specific written permission to do so has been obtained from Manchester Township.

Section 18. Penalties

18.01 Any violation of this ordinance or the permit given pursuant to it shall justify revocation of the permit provided that the Township gives the applicant ten (10) days within which to cure the violation. Failure on the part of the operator to correct the reported violation within ten (10) days after such demand is made shall entitle the Manchester Township Planning Commission to cancel the permit and demand that all activities cease and that restoration be done and completed as provided for in this ordinance.

18.02 Additionally, any person, firm, corporation, or any other organization, which violates, disobeys, omits, neglects or refuses to comply with, or resists the enforcement of any provision of this ordinance, shall be fined upon conviction not more than Five hundred and No/100 (\$500.00) Dollars together with the costs of prosecution, or shall be punished by imprisonment in the County Jail for not more than ninety (90) days for each offense, or may be both fined and imprisoned as provided herein at the discretion of the Court. Every day during which such violation continues shall be deemed a separate offense. The imposition of any sentence shall not exempt this offender from compliance with the provisions of this ordinance.

18.03 The above penalties and/or relief are in addition to any other provided by law.

Section 19. Public Nuisance

19.01 The use of any land in Manchester Township in violation of this ordinance is hereby declared to be a public nuisance, per se, and may be abated by order of any court of competent jurisdiction.

Section 20. Severability

20.01 This ordinance and its various parts, sections, subsections, sentences, phrases and clauses are severable. If any part, sentence, paragraph, section, subsection, phrase or clause is adjudged unconstitutional or invalid, it is hereby provided that the remainder of this ordinance shall not be affected. The Township Board declares that it would have passed this ordinance and each of its parts, sections, subsections, phrases, sentences and clauses irrespective of the fact that any one or more parts, sections, subsections, phrases, sentences or clauses be declared invalid.

Section 21. Interpretation

21.01 The provisions of this ordinance shall be held to be minimum requirements for the promotion of public health, moral safety, comfort, convenience, or general welfare. It is not intended by this ordinance to repeal, abrogate, annul or in any way to impair or interfere with any existing provision of law or ordinance, or with any rules, regulations, or permits previously adopted, or issued, or which shall be adopted or issued

pursuant to the law relating to the use of the premises described herein, provided, however, that where this ordinance imposes a greater restriction than is required by existing ordinance or by rules, regulations, or permits, the provisions of this ordinance shall control.

Section 22. Variances

When there are practical difficulties or unnecessary hardships in the way of carrying out the strict letter of this ordinance, the Township Board shall have the power to vary or modify the application of the provisions of this ordinance so that the intent and purpose of the ordinance shall be observed, public safety secured and substantial justice done.

Any applicant may apply for a variance from any provision of the ordinance by filing an application for variance with the Township Clerk. The Township Board shall hold a public hearing upon such application within forty-five (45) days from its filing. The Township Clerk shall give notice of the hearing to the owners of all property within three hundred (300) feet of the subject property. The notice shall be mailed to each such party and published in a newspaper of general circulation in the Township not later than seven (7) days before the hearing. Any party may appear and comment at the hearing in person or by agent or by attorney. The Township shall keep a record of said hearing and shall render a written decision not later than the next regular Township Board meeting after the hearing date. The Township Board may attach reasonable conditions in granting any variance from any provision of the ordinance, and the breach of any conditions or the failure of any application to comply with the conditions shall void the variance. This provision of the ordinance is intended, in part, to enable variances to be granted and conditions attached to the variances to facilitate the upgrading of prior extraction operations, in a reasonable and practical manner.

Section 23. Effective Date

23.01 This ordinance is adopted by the Township Board of the Township of Manchester at a meeting thereof held on the 9th day of October, 1995, and is ordered to be given according to law. This ordinance shall take effect thirty (30) days after publication of this ordinance.

23.02 Owners and operators of all extraction operations existing before October 9, 1995, must apply for the required permit by March 1, 1996; and must meet all provisions of this ordinance by January 1, 1997.

Manchester Township Board
Ronald Mann, Supervisor
Kathleen Hakes, Clerk

SCHOOL CROSSING GUARD

\$

NEEDED!!!

\$

Earn \$60 per week during the School year
(Based on \$6 per hour)

MUST BE AT LEAST 18 YEARS OLD

Job requires four (4) hours of training
(paid at the \$6 per hour rate)

WORK EACH SCHOOL DAY MORNING
(from 8:00 to 8:40 a.m.)

AND EACH AFTERNOON
(from 3:00 to 3:30 p.m.)

GUARDS ARE PAID
FOR TWO FULL HOURS PER DAY

\$

Position is available immediately. Please call Karen Tucker, Manchester Village Clerk, at 428-7877 or stop at the Village Hall, 120 S. Clinton Street, between 8:00 a.m. and 4:30 p.m.

SHARON TOWNSHIP PLANNING COMMISSION

Public Hearing and Meeting

On Thursday, November 16, 1995, at 8:00 pm EST, at the Sharon Township Hall, 18010 Pleasant Lake Road, the Sharon Township Planning Commission will hold a Public Hearing to hear comments on the following proposals:

1. To amend Article 22, Site Plan Review, of the Sharon Township Zoning Ordinance No. 2 by replacing it with an updated article of the same title. Article 2, Definitions, is also affected by this proposed amendment.
2. To amend Article 2, Definitions, by clarifying the definitions of Lot and Lot Area, and by adding a definition of Lot Width.
3. To amend Article 10, Schedule of District Regulations, by re-classifying "Storage buildings, barns, and silos" as an accessory use.
4. To amend Article 3, General Provisions, by clarifying the wording of Sec. 3.04, Temporary Structures.
5. To amend Article 11, Supplementary District Regulations, by creating Sec. 11.11, Intensive Animal Feeding, consolidating all current regulations regarding this use, from various sections, under this single heading. This amendment also adds "Intensive Animal Feeding" to the Schedule of Use Regulations, Sec. 10.03.

Written comments may be sent to Tom Lavender, Chairman, Sharon Township Planning Commission, 4388 Jacob Road, Grass Lake, Michigan 49240, and must be received before November 16, 1995.

The Sharon Township Zoning Ordinance, and the proposed amendments, may be examined at the Manchester Township Library. The Ordinance is available for purchase or review through Duane Haselschwerdt, Sharon Township Clerk, 8440 M-52, Manchester.

The regular meeting of the Commission will commence immediately following the Public Hearing.

Sharon Township Planning Commission

Tom Lavender, Chairman



CHIROPRACTIC
CARE KEEPS
PEOPLE
WORKING
and EARNING.

CALL 428-7207

**FOR YOUR
APPOINTMENT
Manchester
Chiropractic
Clinic**

**Stanley Gilbert, D.C.
232 East Main**

PROPOSED SYNOPSIS Regular Meeting of Manchester Township Board Monday, October 9, 1995

The meeting was called to order at 8:02 PM with Board Members Macomber, Widmayer, Turk, Mann, and Hakes present. Also present were Fire Chief Gary Wiedmayer and Kathy Kueffner. Minutes from the Board's last meeting, held September 11, 1995, were approved as presented. Minutes from the Planning Commission and the Western Washtenaw Recycling Authority were accepted.

The Treasurer's report was accepted. An amendment to the General Fund budget was made in the grave markers and flags line item to allow for payment of an invoice from the American Legion. Approval was given for bills that had been paid, and for payment of bills totaling \$6874.00 in the General Fund, \$280.00 in the Special Housing Fund, and \$1340.00 from the General Fund Savings from monies reserved for office equipment.

The Board adopted a policy on annual Fire Department physicals, requiring prior ap-

proval from the Fire Chief for physicals obtained from private physicians. Fire Department activity for September: 2 fires, 12 medical runs, 6 personal injury, and 2 miscellaneous, for a total of 22 runs. A probationary fire fighter was appointed. Approval was given to pay \$150 to the Dutchmen Firefighters Association for planting of the new landscaping.

Constable/Zoning Administrator Moore's report included 21 police reports written and zoning permits issued for 1 new residence, 3 remodels, 3 barns/garages, 1 swimming pool, and 1 resolved violation.

Ordinance #39: "An Ordinance Regulating the Extraction of Sand, Gravel, and other Earthen Materials" was adopted and will take effect 30 days after publication.

Since any work on the parking lot could not be completed this fall, repairs will be postponed until April.

Millage rates were set. Total millage to be collected for the township is 1.7745, breaking

down as follows: Allocated-1.0050; Roads- 0.2198; Fire Equipment-0.2497; Fire Truck-0.3000.

Since the office now has a new phone system, the Board decided to sell the five two line phones from the old system for \$25 or best offer. An ad will be placed in the Enterprise.

Routine correspondence required no action from the Board. There being no further business, the meeting adjourned at 10:26 PM.

A complete copy of the minutes may be viewed at the township office during normal office hours, which are Monday, Tuesday, Wednesday, and Friday from 8:30 AM to noon, or by contacting the Clerk.

The next regular meeting of the Manchester Township Board will be held Monday, November 13, 1995, at 8:00 PM in the township hall.

Submitted by Kathleen M. Hakes, Clerk

Approved by Ronald E. Mann, Supervisor

Bridgewater Township Planning Commission

October 9, 1995
Summary Minutes

Chairman Fish announced that George Snider has moved from the Township and will no longer be eligible to serve on the Planning Commission. Mr. Fish asked the Commission members to think about possible recommendations for filling the vacancy.

Secretary Peacock distributed proposed Zoning language from the Township Attorney. The language is intended to limit the time an approved Conditional Use Permit can be held by an applicant without signing the permit, accepting the conditions and demonstrating that use of the permit has commenced. A public hearing will be held on the zoning amendment at the regularly scheduled Planning Commission Meeting on November 13.

Rodney Arroyo and James Schafer of Birchler Arroyo Associates were present to make an oral presentation of their proposal to serve as consultant for update of the Township Zoning Ordinance and Subdivision Regulations. Presentations were made by Carlisle Associates and McKenna Associates at a special Planning Commission meeting on October 2, 1995.

After a lengthy discussion, the Planning Commission voted to recommend to the Township Board that Birchler Arroyo Associates proposal for updating the Township Zoning Ordinance and Subdivision Regulations be accepted.

The review of the Township Plan was laid over until the November 13 meeting.

Wade Peacock, Secretary

BRIDGEWATER TOWNSHIP RESIDENTS FALL CLEAN-UP DAY

Saturday, November 4, 1995

8:00 a.m. - 12:00 noon

Bridgewater Township Hall

10990 Clinton Rd., Clinton, MI 49236

"Come Early and Avoid the Crowd"

DO BRING: Household Rubbish & Discards, Old Furniture, Mattresses, Iron including Appliances*

DO NOT BRING: 55-gallon drums, liquids of any kind, batteries, tires, fencing, tree stumps, large car parts, building materials such as brick, concrete, masonry

*THIS DROP-OFF IS FOR REFUSE ONLY
NOT RECYCLABLES*

*Please take your recyclables to the recycle bins
at the Bridgewater General Store*

*Your Drivers License or Property Tax Statement will be
required to verify Township Residence!*

*All refrigerators, freezers, air conditioners or any other appliance with refrigerants must be tagged by a qualified technician who has removed the freon, or they will not be accepted.

Sutton Insurance Agency, Inc.

136 E. Main St., Manchester, MI 48158

Manchester's
Independent Agency

AUTO • HOME • FARM • LIFE
HEALTH • DISABILITY



"We Take Pride In Our High Level Of Quality Service"

M-T-W-F 9 - 4:30, Th 9 - noon Appointments Also to Fit Your Schedule

Specializing in Individual, Temporary & Group Medical Insurance

428-9737

**Watch And
Watch Out**
On Halloween...
Carry a flashlight
and wear
retroreflective
material on
your costume.

AAA Michigan

**A Good Selection
of
New and Used Cars
On Our Lot**

**TIRB
CHEVROLET & GEO**

**Don't Get Disturbed..See Tirb!
A Metro Detroit Chevy Dealer**

428-8212 • 131 Adrian St., Manchester

