

THE MANCHESTER ENTERPRISE

Thursday, August 24, 1995



Speaking for the people of the Manchester Area

128th Year -- No. 44

Manchester, Michigan

40c per copy

John Korican appointed Interim High School Principal

Shortly after Russ LeBlanc's resignation last week, the Board of Education voted John Korican the new interim principal for Manchester High School.

Although an interim principal has all the responsibilities and duties as an "official" principal, a time restrained has been established. For John Korican, a one semester term has been agreed upon, after which the position will be open for interested candidates. This term length was established for the sake of continuity in the high school office. "With two new people in the office (John Eisley and John Korican), it has been hard on everyone."

Korican says he feels up to the job, but will miss teaching in the classroom as well as coaching the Manchester High School Varsity Golf Team - which he had to sacrifice because of the effort and time constraints put on the new principal.

Korican is no stranger to his "new" position. He served as MHS principal for several years in the early '80s. He feels confident and hopes to keep MHS moving in the same direction as it was before under the leadership of LeBlanc.

Presently, Korican is focus-



ing on getting the new school year off the ground. "It is always hectic at first, with classes and schedules." Korican also reminds students to remember the school policy when dressing for the hot August heat. (Spoken like a true principal.)

As Korican's terms starts, we can only wish him the best. As many of us know, John Korican has been around a long time and has seen many changes at the high school. Hopefully John's experience and wisdom will prove to be an asset for MHS.

When asked what he thought of his new position, John says with an unmistakable smile, "I'll do my best for ol' MHS."

by Mary Lobbestael

New Assistant Principal and Athletic Director Named



John Eisley has been named as Manchester's new A.D. and Asst. Principal. John comes to Manchester from Pickney schools where he was the A.D. for two years for 1200 students at the High School level and 34 teams. His is an Easter Michigan graduate with a B.S and two masters is Education Leadership and Physical Ed. John lives in Dexter with his wife and daughter.

"Academics comes first and then Athletics." He initiated a tutoring program in Pickney to keep the athletes eligible with after school study sessions. John taught the classes himself with volunteers from the staff and National Honor Students and hopes to be able to implement such a program here at M.H.S. The students will miss practices to attend the study sessions, but we are here to educate first and foremost. The athletes who kept a 3.0 and above during the playing season at Pickney received a Scholar Athletic Award and pin - 58% received the award. John has lots of experience in fund raising to help improve the sports program.

As the assistant principal, the challenge will be great for John. He will be taking lots of notes the first year to meet the needs of students and staff. Safety of the students is a top priority with a safe learning environment. John will be handling most of the discipline too. Good Luck in your new endeavors.

by TMB



Old tin dining room ceiling. Note ornate square with diamond insert that held a chandelier

Hop-In Remodeling Progresses

Old Goodyear Hotel - Freeman House Ceiling Uncovered

A little bit of history has come to light during the remodeling of the Hop-In. The old tin ceiling of the Goodyear House Dining Room constructed in 1869.

The Goodyear House later became known as the Freeman House. In the Centennial book Manchester's First Hundred Years, 1867 to 1967, Author, Marie A. Schneider, there are several references to the hotel.

November, 1872. W.H. Lewis, proprietor of the Goodyear House will soon open an oyster room in the basement of the hotel and there will be service in first class style...

February 5, 1873. The Goodyear house has been sold to Coon and Burch but Mr. Lewis will remain in charge.

Jan. 29, 1882. We miss the street lamp that stood in front of the Goodyear House.

November 22, 1895. A. Freeman, who owned Goodyear House, asked council to remove

the windmill (which he called barn yard fixture) from the front of Goodyear House. He offered to move the windmill to the rear of the Goodyear House and said he would pipe the water from the well to a stone watering trough similar to those in other towns. He also offered to keep the windmill in repair as long as it was worth repairing.

Thursday, June 12, 1902 A storm with raging wind and hail. Water stood an inch deep at Freeman House.

The references stop there. The Hotel remained popular however for many years. The number of trains that passed through Manchester gave the hotel a source of customers. The layover of train passengers that transferred from the Hillsdale line to the Tecumseh line diminished with the advent of the automobile.

The Goodyear House was

Continued On Pg. 15

Please deliver this copy of THE MANCHESTER ENTERPRISE to

Did your Grandma have a Sleeping Porch?

see pages 8 & 9

Inside This Issue

Community Calendar.....	Page 2
Smart Dogs.....	Page 3
Editorial/Opinion.....	Page 4
Local Government.....	Page 5
Church Page.....	Page 6
Announcements.....	Page 7
Down Memory Lane.....	Page 8 & 9
People.....	Page 10
Senior Citizens.....	Page 11
School.....	Page 12
Sports.....	Page 13
Classified Ads.....	Page 14

Community Calendar

Scheduled Meetings

Bridgewater Twp.
Doug Parr Supervisor
428 - 8243
Karen Weidmayer, Clerk
13360 E. Austin
428-8641
Planning Commission
2nd Monday 7:30
Township Board meeting
3rd Wednesday, 8:00
Freedom Township
Town Hall 428-7545
11508 Pleasant Lk. Rd.
Robert Little Supervisor
Julie Schaible, Clerk
13785 Pleasant Lk.
428-7241
Township meeting
2nd Tuesday 8:00
Planning Commission
meets on First Tuesday
of all even numbered
months
Manchester Township
Town Hall 428-7090
Ron Mann Supervisor
275 S. Macomb
Kathleen Hakes, Clerk
Township meeting
2nd Monday 8:00
Planning Commission
4th Tuesday
FIRE DEPARTMENT
428-9439 non-emergency
Sharon Township
Supervisor John Savage
20453 Pleasant Lk. Rd.
428-8907
Duane Haselschwerdt, clerk
428-7733, 428-7591
8440 M-52
Township Meeting
1st Thursday 8:00
Planning Commission
2d or 3d Thursday
Manchester Board of
Education
Paul Kluwe, President
Meetings
3d Monday 7:30
M.H.S. Library
Superintendent - Ron
Niedzwiecki 428-9711
Village of Manchester
Larry Becktel President
Jeff Wallace Manager
428-7877
Village Council Meets
1st & 3d Monday, 7:00

The Community Calendar is a regular feature of the Enterprise. If your meetings or special events should be listed here, please call us at 428-8173.

The Manchester Enterprise is published each Thursday at 109 East Main St., Manchester, MI 48158, with second class postage paid at the Manchester Post Office.

POSTMASTER: Send Form 3972 to: Manchester Enterprise, P.O. Box 37, Manchester, MI 48158.

The Manchester Enterprise, Inc.
(313) 428 - 8173

Editor & Publisher
Emory Garlick

Ads & General Manager
Teresa Benedict
Production & Writer
Marsha Johnson Chartrand

One-year subscriptions are \$18 within Washtenaw County, \$20 outside the county. Deadline for display ads, photos, classifieds and news articles is Friday at 5:00 p.m. **The Manchester Enterprise.** No part of this publication may be used without the written permission of the publisher.
© 1994 The Manchester Enterprise

COMMUNITY EVENTS

Monday

1st Monday: Manchester Township Library Board meets 7:30 pm.
1st Monday: Manchester Masonic Lodge, business meeting 7:30
1st & 3rd Monday: Manchester Village Council, 7:00
2nd Monday: Bridgewater Township Planning Commission meets 7:30
2nd Monday: Manchester Knights of Columbus meets 8:00 PM. Guy Little, Grand Knight
2nd Monday: Manchester Township Board meets 8:00
2nd & 4th Mondays: **Manchester Optimist Club**
3rd Monday: School Board meets MHS Library 7:45

Tuesday

1st & 3rd Tuesdays: Manchester Kiwanis meets at Emanuel Church Upstairs Classroom, 7:00 PM

2nd Tuesday: Freedom Township board meets 8:00
2nd Tuesday after 1st Monday: Village Planning Commission

2nd Tuesday: Manchester Area Senior Citizens, 9:30 am
2nd Tuesday: 20th Century Club, 7:30 pm.
2nd & 4th Tuesdays: Shakespeare Club, 2:00 & 4:00
3rd Tuesday: Manchester Historical Society, 7:30 at Blacksmith Shop
4th Tuesday: Raisin Valley Land Trust, at the Blacksmith Shop
4th Tuesday: La Leche League 10:00 am call 428-8831 for location and info.
4th Tuesday: Manchester Township Planning Commission

Every Tuesday: Boot Stompers meet at American Legion

Every Tuesday At Your Home: RECYCLE - put containers at curb by 7:30 AM

Wednesday

1st Wednesday: Veterans of Foreign Wars, 7:30 pm
2nd Wednesday: American Legion Auxiliary, meets 7:30
2nd Wednesday: Manchester Recreation Task Force, 7:30 at Blacksmith Shop.
2nd & 4th Wednesdays: **Manchester Area Home-schooler's Network. Call Tina at 428-0576.**
3rd Wednesday: Manchester Men's Club 7:30 PM
3rd Wednesday: Community Resource Center Board, 7:30
3rd Wednesday, WIC Program, 9:30-3:00 Senior Citizens Bldg.
3rd Wednesday: Bridgewater Township Board, 8: PM
4th Wednesday: Manchester Township Fire Department meeting, 7:30 PM

Thursday

1st Thursday: Sharon Township Board meets 8:00
1st Thursday: American Legion Post #117, meets 7:30
2nd or 3rd Thursday: Sharon Township Planning Commission
3rd Thursday: Cub Scout Pack Meeting, 7:00 pm
Every Thursday, Community Band - 7:30 PM

Misc. Notices

Manchester Little League Board of Directors will meet at 7:00 PM at Carr Park, on the following dates:
September 12, 1995
September 26, 1995
October 3, 1995 - Election of Officers for the 1996 season

PLEASE NOTE

Classified Deadline is Friday at 5 p.m.

Any classifieds accepted after this time will be subject to a \$2.00 surcharge, effective immediately.

**MANCHESTER STOCK DOG FIELD TRAILS
SAT., AUG 26 - SUN., AUG 27
Starting Between 7:30 - 8:00 AM
PUBLIC WELCOME!!**

Come see stock dogs work sheep through a specifically designed course that test the dogs and the handlers abilities to control and move livestock. The trial is being held on a sheep farm in Manchester, Mi. south of Austin Road between English Rd. and Ely Rd. (off of US 12).

There will be four classes running:
Novice, Pro-Novice, Nursery, and Open.
For more information and directions
Call 428-7065. Bring a lawn chair.

Dial - a - Garden

971-1129



Wednesday, August 23: Outdoor vegetable storage

Thursday, August 24: Storing vegetables indoors

Friday, August 25: Animals in the garden

Monday, August 28: Digging and storing summer bulbs

Tuesday, August 29: Bring houseplants back inside

Wednesday, August 30: Evergreen needle drop

Thursday, August 31: Casual home invading pests

Dial-a-Garden is a system of pre-recorded daily gardening tips which is in operation 24 hours a day, 7 days a week. To talk to a Master Gardener, call 971-0079 weekdays from 9 AM - 12 and 1 - 3 PM.

Summer's winding down, but there are still some special events to look forward to in the weeks ahead:

Monday, August 28th: First Day Of School! 1/2 day for students

Sunday, September 10: 6th Annual Kiwanis Volleyball Tournament - Carr Park

Sunday, September 17: Manchester Golf Open, sponsored by the CRC, at Greenbriar Golf Course
for information about upcoming events, call the Community Resource Center at 428-7722.

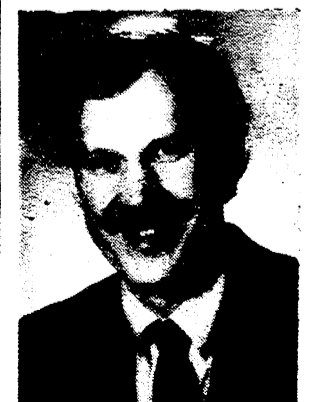
This Message Provided as a Public Service by The Manchester Enterprise

ORTHODONTIST

RAYMOND P. HOWE
D.D.S., M.S.

515 S. Main Street
Chelsea

(313) 475-2260



Sutton Insurance Agency, Inc.

136 E. Main St., Manchester, MI 48158

Manchester's Independent Agency

AUTO • HOME • FARM • LIFE
HEALTH • DISABILITY

"We Take Pride In Our High Level Of Quality Service"

M-T-W-F 9 - 4:30, Th 9 - noon Appointments Also to Fit Your Schedule

Specializing in DISCOUNTED AUTO INSURANCE

428-9737



MANCHESTER ENTERPRISE

Second Front Page: Sheepdog Trials To Be Held Locally

Farmer puts his stock in Smart Dogs

-by Marsha Johnson Chartrand

It is a strange yet almost exhilarating feeling to stand in the middle of a pasture and see a large flock of sheep come straight toward you at a dead run. Suddenly, at the sound of a soft command, or perhaps a whistle, they stop barely five feet away; once again they are the docile creatures one might expect.

Well-trained sheep? More like a well-trained sheep dog named Gypsy. More and more farmers, says Dave Scovell, are returning to the use of dogs to help "shepherd" on their farms, as the Scovells have done the past nine years.

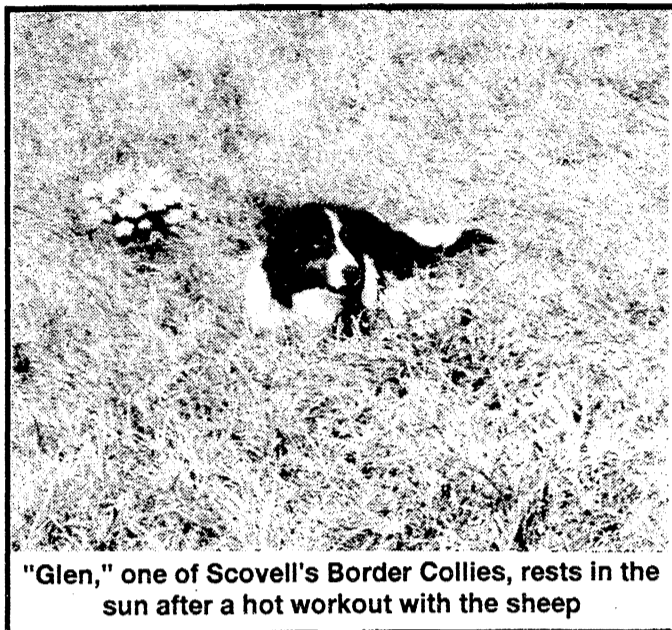
The Enterprise was invited to observe a "trial run" of the sheep and the dogs, and so I had the opportunity to get that very exhilarating feeling myself last week.

Dave Scovell and his wife, Darlene, are the first occupants outside the English family to live in the "Old English Farm" on English Road. Old plat book indicate that this farm was one of the first in the area. It is appropriate, then, that Dave has chosen to use a very traditional method of sheep farming for his commercial flock of about 300 ewes.

Border Collies are the secret to the Scovell's traditional sheep farming operation. "They are an integral part of my farm business," indicates Dave. "I'd have to hire help, otherwise." He notes that some farmers have turned to the more human alternatives such as hiring shepherds, sometimes mounted on four-wheelers, to care for their sheep. But, he says, there is a definite resurgence of using dogs, due to the high cost of labor and equipment.

Dave raises, breeds, trains and sells working farm dogs as a farming sideline. He currently has several dogs who work on the farm, as well as importing dogs whose bloodlines originate in the British Isles, where the idea of border collies being used as shepherds also originated.

And it was in those fabled British highlands that the idea of field trials for those working dogs was born. More than a "showplace" for these dogs, the trial is a test course to see which dogs can work well with certain kinds of sheep and do the work which will be required of them as



"Glen," one of Scovell's Border Collies, rests in the sun after a hot workout with the sheep

real farm dogs. Their scores are based entirely on performance, rather than appearance as is common in many other breeds of dog trials.

"It is really a chance to see who's best on a certain day," Dave explains. "Dogs vary; sheep vary; and some may work better together than others on any given day. But is a fair test of all the skills a dog needs to work on the farm."

"These dogs are bred to work, to think, and to be biddable," Dave continues. And although he knows some people might question his partiality to his dogs, Dave says he does believe that the collies are even capable of reasoning. "Border collies are reputed to be the smartest of the canine breeds, and in fact are one of the last breeds to be bred and noted specifically for their intelligence." He works with his dogs an hour or two each day in addition to the routine work of the farm, to prepare them for trials, which then help him to promote his dogs and their offspring.

The requirements for field dogs are more exacting than would be asked of a farm dog. "We are testing which dogs should be bred [for their intelligence and other capabilities]," says Dave. "Field trial dogs, in this breed, do make good working dogs."

It is for this reason that the Scovells are hosting their own field trial at the farm this coming weekend, August 26 and 27th. Although this is the first field trial they have held themselves, Dave attends 10-12 trials each year. He feels this is a sort of pay back to those who have hosted the many trials he has attended.

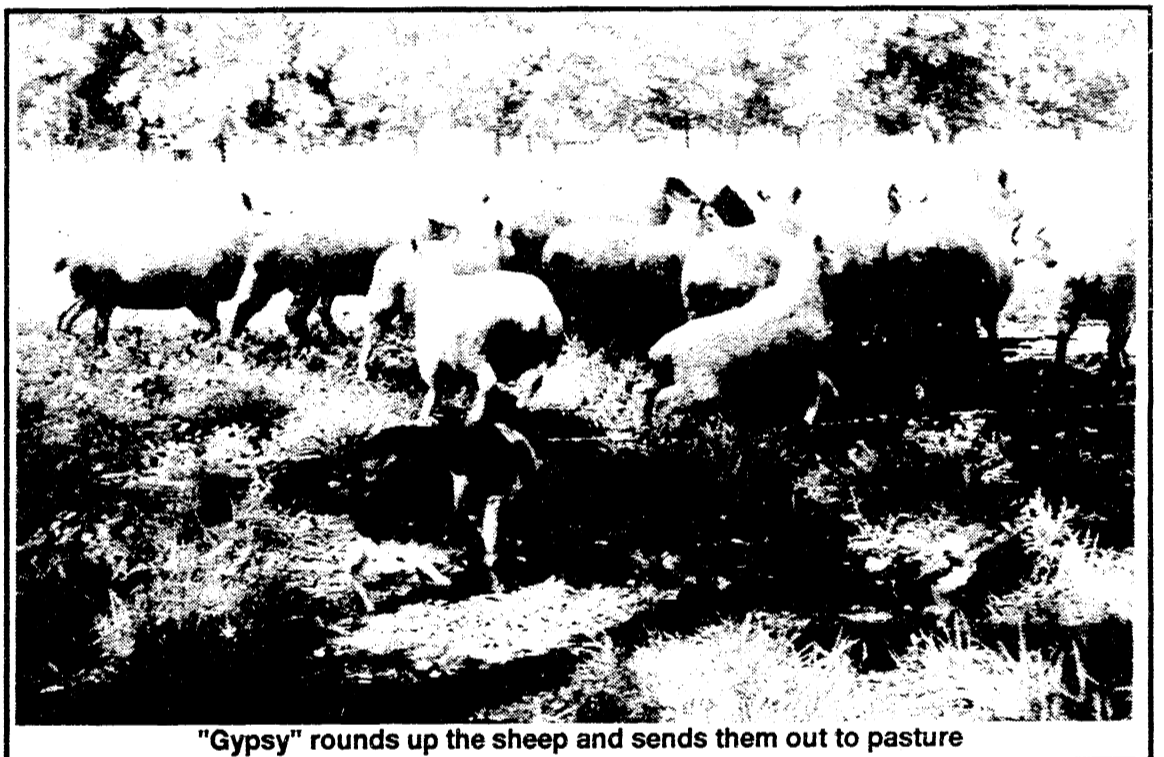
"And people are always looking for a place to take their dogs."

The U.S. National Championship trials are set for Sheridan, Wyoming, in mid-September, so this trial is well placed in the schedule to attract some very good dogs.

Although the sport is publicized mainly by word of mouth and kept purposely to a farm atmosphere to avoid commercialization, the Scovells welcome the public and particularly the community to attend the trial. And how appropriate it is to have a setting at the edge of the Irish

Hills! Those settlers who found this area to be so like the rolling hills of Ireland were perhaps sheep farmers as well. The pastoral location for this trial will encourage participants to return year after year as their field trial becomes more established. As many as 100 dogs and their handlers may be expected to attend this first trial.

The Old English Farm is located on English Road between Grossman and Sharon Hollow. Stop out this weekend and be fascinated by the intelligence and capabilities of these very remarkable animals.



"Gypsy" rounds up the sheep and sends them out to pasture

Reinhart
 Charles Reinhart Company Realtors



DEBORAH ENGELBERT
 Sales Associate
 22 Million in Sales

Office: 313/971-6070
 Residence: 313/475-8303
 Fax: 313/747-7880


2452 East Stadium Blvd.
 Ann Arbor, MI 48104

MIDWEST FORD
 OUR HOMETOWN DEALERSHIP 510 W. MAIN ST.
 428-8343


"Here to Serve"

I would like the opportunity to serve as your new or used vehicle sales consultant. Your business and satisfaction is important to me.

My responsibility doesn't end when your vehicle is delivered - It just begins.



LEON BALL
 New & Used Sales



Sales Hours: Mon-Thurs 8:30-8 pm; Tues., Wed., Fri., 8:30-6 pm; Sat 9-3

Editorial / Opinion

The Hat Thief Speaks Out

Dear Emory,

As much as I would like to have Mr. & Mrs. Tyler take the blame for you missing hat, I cannot let them take credit for my deed.

Mr. Tyler I'm sure is a fine young lad. However he does not have the Charisma as yet, like you and I, to wear such a distinguished hat.

But I should have known that you wouldn't buckle under so easily, and that you always investigate and dig until the truth comes out.

For fear of being caught with the evidence and being exposed you leave me with no choice but to dispose of your hat. I have wrote your name and address on your hat, placed it in a rubber raft and cast it down the Raisin River.

We'll see if fate brings it back. Enclosed are some pictures of where your hat has journeyed so far.

Bon Voyage!

The Running Scared Hat Thief

Dear Manchester Enterprise:

Thank you so much for buying my Manchester Fair pigs. I learned a lot about the fair and what to do with all the money I sell them for. This year I'm putting my money in the bank, mostly for college, but also to buy next year's pigs. I hope next year you will come back to the fair and bid on my pigs again. It would be most appreciated. Thank you so much for a successful and fun-filled week at the fair.

Sincerely,
Jolene Hochstetler

Dear Jeff,

In 1986 when leaf burning was discontinued, I personally felt great relief. Our family have been residents of Manchester since 1974. During the period of time between 1974 and 1986, each fall as leaves would be burned, I would suffer asthma related problems and usually have 2-3 cases of bronchitis and 1-2 cases of walking pneumonia. This was never a problem until leaf burning season started. My next door neighbor's daughter was also faced with severe breathing difficulties, especially on the weekends when most of the burning was taking place, to the degree that she had to be sent out of town to her grandparents home for the weekends during burning season. This family also still lives in Manchester. Although I am not currently working as an R.N., I worked many years in Ann Arbor and know for a fact that there are many community members who have lung related problems such as asthma, recurring bronchitis, emphysema, frequent colds and ear infections. These conditions are all made much worse when exposed to the filthy smoke that fills our beautiful clean air. The smoke is heavy enough that it carries other pollutants in it such as the oil that causes poison ivy, a very serious problem when in the lungs.

We have recently moved just outside of the city limits, but Wayne and I both walk and run for exercise in town and do our shopping in town. I would like to plead with the city council to find an alternative to burning leaves. I know that there are so many others who may not have the leadership to step forward and state their feelings and there will be those elderly who will also not be able to come forward, so I hope that I speak for these community members as well as for myself and my family. Again, please consider whatever other alternatives there may be, but NOT burning.

Thank you so very much for your attention in this matter.

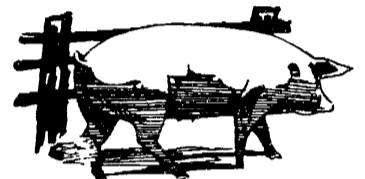
Sandy Winzenz
cc: The Enterprise

This Friday, August 25, downtown will be filled with Model T's. The 14th Annual Michigan Jamboree of T's will be here. Hosting this years' convention is Washtenaw Nau'Ties and Huron Valley Cranks.

They will be visiting the Blacksmith Shop and Sharon Mills Winery between 9 AM and 1 PM. Approximately 100 T's will be around the area for you to enjoy. "We love to have you look and appreciate no touching," according to Ann Schnearle, who is a host.

Out of the Pen

by garlene



Summer is winding down and soon it will be time for the piglets to return to school. Is it garlene's imagination or has this summer passed by even more quickly than the ones preceding it? Seems like those "lazy, hazy, crazy" days of summer we were promised lived up to only the last third of their name - although accurately describe quite a few recent days.

We all know that summers always pass by too quickly for the piglets. Summer vacations, as LONG as they sometimes seem to stretch out ahead of us, always seem, once they were underway, to get swallowed up in a lot of hectic activities through which we rush, often not taking a lot of time to really enjoy them.

A wise woman of garlene's acquaintance has put it very succinctly - we have turned our blessings into burdens. The very things that are supposed to be providing us with the most joys - our families, our homes, our jobs - have become overwhelming "chores" instead. Kids have to be rushed to day care, to jobs, to friends' homes, and to their varied activities. There is up-keep on our homes, our yards, our gardens, and the "stuff" we have accumulated along the way. Our jobs, which are supposed to provide us with stimulation, di-

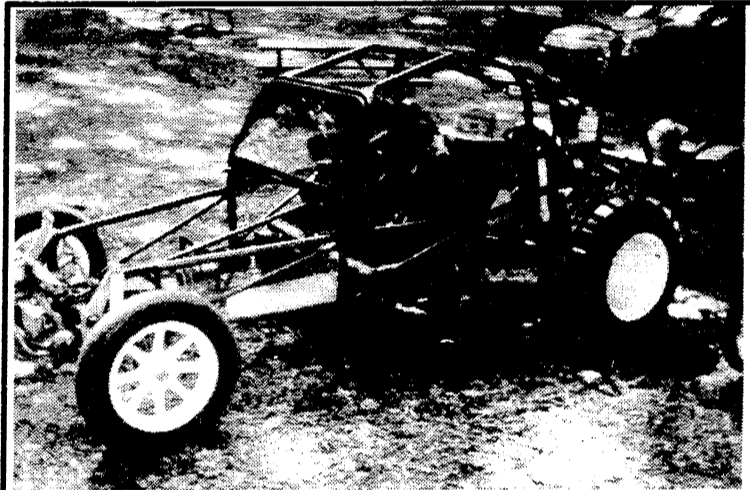
version and financial incentives, turn into complaints of being "overworked and under paid."

We're too often slaves to the events and the "things" that have cluttered up our lives. A popular singer several years ago told us we had to "stop and smell the roses along the sway." Have we been doing that this summer? Or have we been too busy rushing from one baseball game to the next barbecue to another fair?

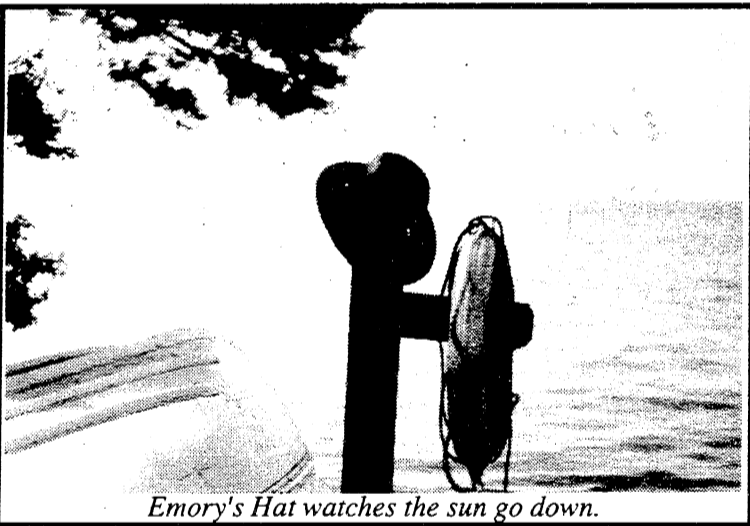
It gets so we start wishing for fall to come. And we think we won't be quite so busy then. We wish for tomorrow, yet the tomorrow we are wishing for never quite makes it. garlene's mother (another wise woman she knows) often used to remind her not to "wish her life away".

No wonder the summer seems to go by too quickly. Our lives are just so full of places to go, things to do, and people to see, that we haven't the time to sit back, be lazy, wallow in a little mud, smell the flowers, and enjoy ourselves. So many obligations, so little time.

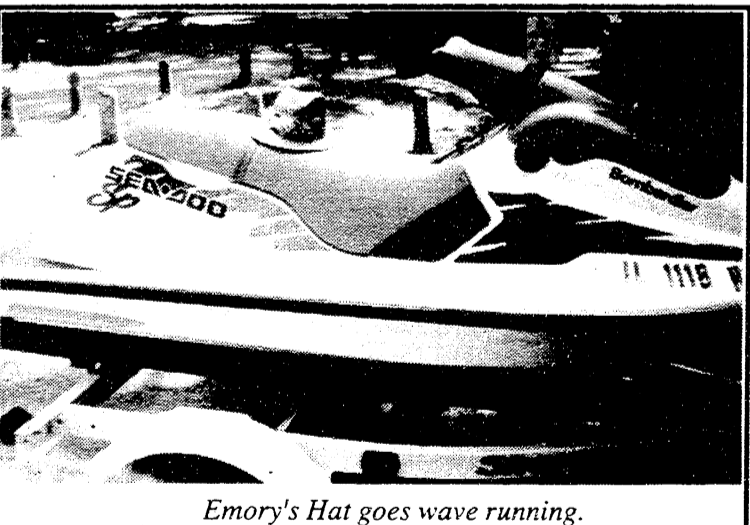
"Lord, what fools we mortals be."



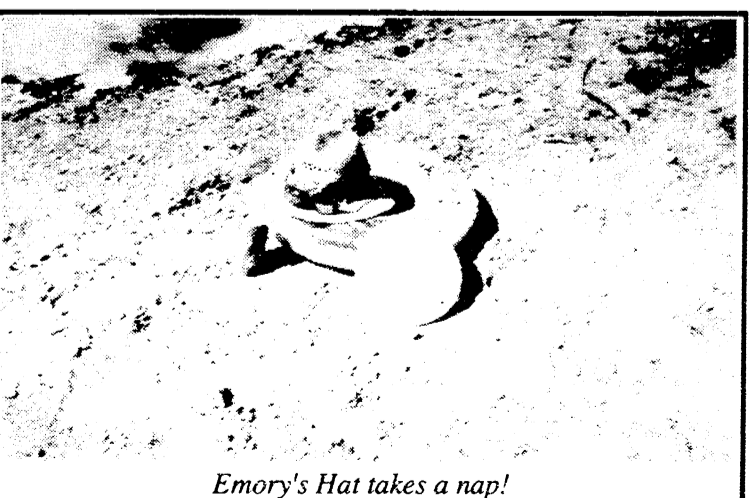
Emory's Hat goes on the dunes.



Emory's Hat watches the sun go down.



Emory's Hat goes wave running.



Emory's Hat takes a nap!

BENEDICT'S SERVICE

24 Hr. Towing & Roadside Assistance



- AAA Accepted
- Flat Bed Service
- Metal Recycling

428-8576

Local Government

Bridgewater Township Planning Commission

**August 1, 1995
Summary Minutes**

The deadline for consultant proposals to update the Township Zoning Ordinance is August 25. At the September 11 meeting the Planning Commission will select Planners for presentations. A subcommittee composed of Commissioners Cobb, Dull and Peacock is charged with developing criteria for consistently evaluating proposals, reviewing the proposals and reporting on the extent to which each proposal meets the criteria.

Master plan was scheduled for 1995 and the review should complement the update of the Zoning Ordinance. Chairman Fish recommended that everyone read the Plan and be prepared to discuss suggested modifications at the September meeting.

It was announced that Dorothy Wyman will be recommended for membership to the Planning Commission at the next Township Board meeting. Mrs. Wyman lives on Sheridan Road.

A review of the Township

Wade Peacock, Secretary

Village of Manchester Planning Commission

**Tuesday, August 15, 1995
Unapproved Summary Minutes**

Our meeting was called to order at 7:36 PM by Chairman Tucker. After roll call, we approved the agenda and the minutes of our July meeting.

Mr. Ellis presented an updated site plan for the Manchester Hotel project he is planning for the Black Sheep Tavern building. He plans to build apartments, office space, retail space, and a restaurant. We reviewed the site plan and discussed the parking for the building. We approved the combined site plan. We also approved a parking variance for this building, allowing for 8 parking spaces instead of the required 16 spaces.

We discussed our Codebook review and decided to hold an informal work session on August 23, 1996. The meeting was adjourned at 9:10 PM

Submitted by Linda Mussio, Secretary

Unapproved Proceedings Manchester Village Council

August 7, 1995

The regular meeting of the Manchester Village Council was called to order by President Becktel at 7:00 PM. Council members present: Becktel, Brooks, Conaway, Marshall, Schaffer, Vought. Absent: Taepke. Also present: Clerk Tucker, Manager Wallace, Gary Wiedmayer -DPW Superintendent, Kim Rickett.

The minutes of the July 17, 1995 regular meeting were approved as presented on a motion by Marshall, support by Vought. Vote: Ayes - all.

The proceedings of the July 17, 1995 regular meeting were approved as presented on a motion by Conaway, support by Marshall. Vote: Ayes - all.

The agenda was approved as amended on a motion by Brooks, support by Vought. Vote: Ayes - all.

Council acknowledged the following correspondence:

- Letter from Washtenaw Development council, renewing annual agreement. Motion by Brooks, support by Marshall to approve up to \$1,183 to the Washtenaw Development Council for the fiscal year 1995/96, and authorizing Village Manager to sign. Roll Call Vote: Ayes - all.

- Memo from Clerk requesting approval from Council to open four new checking accounts in the following funds: Equipment, Sewer, Local, Major. Motion by Schaffer, support by Vought to approve the opening of four new checking accounts, as listed and recommended by the auditor. Vote: Ayes - all.

Motion by Marshall, support by Vought to accept the Treasurer's Report as presented. Vote: Ayes - all.

Motion by Becktel, support by Brooks, to approve the payables, minus the check for \$70 to Dr. Eccles, in the amount of \$42,269.51. Roll Call Vote: Ayes - all.

DPW REPORT: Motion by Schaffer, support by Becktel to approve the bid of Thompson-McCully, not to exceed the total of \$70,830 for 1995 street work. Roll Call Vote: Ayes - All.

CABLE FRANCHISE RENEWAL: Motion by Schaffer, support by Conaway to enter into the agreement and approve the franchise with Clear Cablevision as presented. Vote: Ayes - all.

BUDGET AMENDMENTS: Motion by Schaffer, support by Brooks to adopt the year-end budget adjustments, as presented. Vote: Ayes - all.

Motion by Becktel, support by Vought, to adjourn at 9:10 PM. Vote: Ayes - all.

Karen Tucker
Village Clerk

**NOTICE OF PUBLIC HEARING
Bridgewater Township Zoning Board of Appeals**

A Public Hearing will be held on Monday, August 28, 1995 at 8:00 PM at the Bridgewater Township Hall, 10990 Clinton Road, Clinton, MI 49236.

The Public Hearing will consider a request by Mr. Mark J. Bauer for a variance regarding construction of a new porch on his house located at 11930 Clinton Road, Clinton.

Written comments, to be received prior to the hearing, may be sent to James Fish, Chair, Bridgewater Township Zoning Board of Appeals,

11691 Hogan Road, Clinton, MI 49236.

Wade Peacock, Secretary
Zoning Board of Appeals

Call **428-9810**

Stephanie's
catering

Now Taking orders for Fall Tailgate Parties, Weddings, Corporate Function, etc.

- * Block "M" Cheese Trays
- * Deli Trays
- * Balloon Bouquets in your Favorite Team Colors
- * Full Service Catering Also Available



CHIROPRACTIC CARE KEEPS PEOPLE WORKING and Earning.

CALL 428-7207 FOR YOUR APPOINTMENT

Manchester Chiropractic Clinic

Stanley Gilbert, D.C.
232 East Main

STEIN ELECTRIC COMPANY, INC.

Licensed & Insured Contractor

24 Hour Emergency Service

Motor Controls & Lighting

Ag. • Commercial • Industrial
Institutional • Residential

Backhoe & Trenching Services
50 ft. Bucket Truck

(313) 428-9050

Rick Graustein • Manchester, MI

Kleinschmidt 

- ✓ Housewares
- ✓ Hunting & Fishing Licences
- ✓ Keys Made
- ✓ Lawn & Garden Supplies
- ✓ Pipe Cutting & Threading
- ✓ Sporting Goods

19870 Sharon Valley Road
(Near the corner of M-52)

M-F 7am - 6pm
Sat 8am - 5pm Sun 10am - 4pm **428-8337**

Faist-Morrow

the Place to Go for a New or Used Vehicle

"Where the QUALITY Used Cars Are"

1500 S. Main St.
Chelsea
475-8663

Fellow, American Association of Oral and Maxillofacial Surgeons
Diplomat, American Board of Oral and Maxillofacial Surgeons

Board Certified Specialist

Cass A. Radecki, D.D.S., P.C.
Oral and Maxillofacial Surgery for Adults and Children


- Extractions
- Dental Implants
- Reconstructive/Corrective Jaw Surgery
- 24 Hour Emergency Service
- Most Medical and Dental Insurance Accepted
- Payment Plans Available
- Nitrous Oxide & IV Sedation

Now open Saturdays **313-429-1384**
203 West Michigan Ave., Saline


Not all treasures are buried
Some are disguised as life insurance policies

Farm Bureau Life Insurance Company of Michigan can help you accumulate funds for college, retirement or any family need. For high interest rates and tax-deferred earnings, call today.

Making your future more predictable



FARM BUREAU INSURANCE



LARRY BECKTEL
135 E. Main Suite 200
Manchester, MI 48158
428-7331

Church News

BAPTIST CHURCHES

NORTH SHARON BAPTIST CHURCH—Clifford Whitenburg, Interim Pastor, Sylvan & Washburn Rds- 428-7222; SS 10:am; Morning Church 11:am; Eve. Church 7:pm; Weds. Bible Study & Youth Mtg 7:pm
VICTORY BAPTIST CHURCH—Rev. R. Dean Cooper, Pastor; 423 S. Macomb, 428-7506, Sunday School 10:00 a.m.; Morning Worship 11:00 a.m.; Evening Public Bible Class 6:00 p.m.; Wednesday Praise and Prayer 7:00 p.m.

CATHOLIC CHURCH

ST. MARY CATHOLIC CHURCH—Rev. Francis J. Murray, Pastor; Telephone 428-8811; Masses: Monday thru Wednesday, Friday 8:30 a.m., Thursday 7:00 p.m., Saturday 5:00 p.m., Sunday 8:30 a.m. and 10:30 a.m.

EPISCOPAL CHURCH

ST. BARNABAS EPISCOPAL CHURCH - Rev. Jerrold F. Beaumont, OSP, MTh, DD; 20500 Old US-12; Chelsea; Telephone (313) 475-8818; Worship Sundays at 10:00 AM

LUTHERAN CHURCHES

ST. JOHN'S LUTHERAN CHURCH—Rev. Dennis A. Falk, Pastor; Austin Road, Bridgewater; Telephone 429-7434; Early Summer Worship 8:30 AM; Sunday School 9:15 AM; Worship 10:30. Various mid-week & Bible study groups.

ST. THOMAS LUTHERAN CHURCH—Rev. John Kayser, pastor; 10001 W. Ellsworth Rd., (5miles North and 6-1/2 East of Manchester); Telephone 663-7511; Schedule: SummerWorship, 9:30 AM Sunday

ZION LUTHERAN CHURCH—Pastor David Hendricks; 3050 S Fletcher Road, Chelsea; Church Office 475-8064, Susan Wiley, Secretary 428-7268. Sunday School 9:15 AM; Worship 10:15AM

UNITED METHODIST CHURCHES

MANCHESTER UNITED METHODIST CHURCH—Rev. Thom Davenport, Pastor; 501 Ann Arbor St. Phones: Parsonage 428-8013, Church 428-8495. Worship 9:30 AM

SHARON UNITED METHODIST CHURCH—Rev. Peggy Paige, Pastor, Corner of M-52 and Pleasant Lake Roads; Church- 428-7714, Parsonage- 428-8430; Sunday School 9:30 AM, Summer Worship 10:30 AM

MORMON CHURCH

CHURCH OF JESUS CHRIST OF LATTER DAY SAINTS (MORMONS)—Gary Spooner, Branch Pres; 1330 Freer Rd, Chelsea; 475-1778; Sacrament 9:30 am; Sun. School, 10:40; Relief Soc, Priesthood & Youth 11:40

NON-DENOMINATIONAL CHURCHES

COMMUNITY BIBLE CHURCH — Pastor Jody Riethmiller; 8400 Sharon Hollow Rd. Telephone 428-8709; Worship Service 10:00 a.m.; Sunday School 11:30 AM, Singpiration 6:00 PM; Wednesday Bible Study & Prayer, 7:30PM. All are welcome!

IRON CREEK COMMUNITY CHURCH—Tom Butterfield, Pastor; English and Sharon Hollow Roads; Sunday School 10:00 AM; Morning Church 11:00 AM; Sunday Evening 7:00 PM

CLINTON ASSEMBLY OF GOD—Rev. Richard Coury; 13300 Clinton-Manchester Road; Phone 517-456-7510; Sunday School 9:30AM; Worship 10:45; Sunday Eve 6:30; Weds Prayer, Bible Study, Youth 7: PM

UNITED CHURCH OF CHRIST

BETHEL UNITED CHURCH OF CHRIST— Rev. Richard E. Hardy, minister, 10425 Bethel Church Road at Schneider Rd.; Phones: Parsonage & Church 428-8000/429-7175; Church Service 9:30AM

EMANUEL UNITED CHURCH OF CHRIST—Rev. Dr. Vincent Carroll, Pastor, Phone: 428-8359; Summer Worship 9:00; Fellowship 10:00 AM

ST. JOHN'S UNITED CHURCH OF CHRIST— Rev. Nancy Doty, Pastor; 12376 Waters Road, Waters and Fletcher Roads, Rogers Corners; Worship and Sunday School 9:30AM

UNITY CHURCH

UNITY CHURCH OF JACKSON—3385 Miles Road, Ackerson Lake, Jackson, MI, 517-764-6900; 11:00 a.m. Sunday Services and Sunday School.

COMMUNITY BIBLE CHURCH

Sunday, August 27, 1995: Worship Service 10:00 AM; Sunday School 11:30 AM; Singpiration 6:00 PM.

MANCHESTER UNITED METHODIST CHURCH

Wednesday, August 23: 7:30 p.m. Care and Share.
Sunday, August 27: 9:30 a.m. Worship.

BETHEL UNITED CHURCH OF CHRIST

Sunday, August 27: 9:30 AM Worship Service

ZION LUTHERAN CHURCH

Friday, August 25: Deadline for September Newsletter
Saturday, August 26: Stephanie Harms wedding
Sunday, August 27: 9:15 AM Worship in Old Zion Church; 10:30 Special Worship in main sanctuary

EMANUEL UNITED CHURCH OF CHRIST

Wednesday, August 23: 9-12 noon, Quilters
Thursday, August 24: 6:30 PM, Worship Service.
Saturday, August 26: 9:00 AM, Sunday School Teachers in training.
Sunday, August 27: 9:00 AM Worship Service, 10:00 AM Fellowship Time, Sunday School Teachers Meeting after church, Senior Youth Group meeting after church.
Tuesday, August 29: 7:00 PM Boy Scouts
Wednesday, August 30: 9-12 noon Quilters, 7:00 PM Pre-school orientation meeting.

ST. THOMAS LUTHERAN CHURCH

Each Sunday: Summer Worship 9:30 AM

ST. JOHN'S LUTHERAN, BRIDGEWATER

Sunday, August 20: Early Worship begins at 8:30 AM. Informal Sunday School, 9:15 AM, studying the "Fruits of the Spirit"; Worship Service at 10:30 AM

SHARON UNITED METHODIST CHURCH

Sunday, August 27: 10:30 AM Worship in Carr Park, followed by Potluck picnic and recreation
Monday, August 28: 7:30 PM Pastor/Staff/Parish Relations Committee
Sunday, September 3: Resume regular worship schedule

ST MARY CATHOLIC CHURCH

Monday, August 28: Parish Finance Council Meeting, 7:30 p.m.



N8882030 © m

FAITH SHOWS YOU HOW TO BEAT THE LATE SUMMER DOLDRUMS

About this time every year, some of us experience a condition known as the late summer doldrums. Suddenly we long for the cooler, more colorful days of autumn that we see on the horizon, and this fills us with a listlessness and lack of purpose. If you are feeling these symptoms, there are remedies at hand. Do something! Write those letters you've been putting off. Clean out that closet and check your fall wardrobe. Take those things you never wear and give them to the poor. Above all, go to your House of Worship each week. It will help revive your spirits and renew your inspiration. Moreover, with a lot of the congregation still away on trips, your presence there will be appreciated more than ever. Faith knows no season, and there's no better time than now to reaffirm yours.

I am weary of days and hours...

- Algernon Swinburne

"To every thing there is a season, and a time to every purpose under heaven."

- Ecclesiastes 3:1

THE CHURCH PAGE IS BROUGHT TO YOU THROUGH THE FOLLOWING SPONSORS

Luke & Barb Schaible	DAN'S WESTSIDE AUTOMOTIVE	Manchester Plastics	<i>WACKER'S GENERAL STORE</i>	
Pilot Metal Products A Division of Pilot Industries	ALBER ORCHARDS	You Owe It To Yourself... To choose a quality retirement. Brooklyn Living Center 151 Constitution Avenue 592-2828 Canton Retirement Centers Inc.	MANCHESTER CAR WASH	MANCHESTER TOOL & DIE
<i>Dr. Charles Lyon, D.O.</i>	Norm & Olga Walz		<i>Hendley & Datsko, PC</i> Attorneys at Law	Manchester Chiropractic Clinic
David Chartrand	S-K Sales, Inc.	KLEINSCHMIDT True Value Hardware	HAROLD BUSS	PAUL & MICHELE KLUWE
MANCHESTER KIWANIS	MANCHESTER MANOR	THE MANCHESTER ENTERPRISE	GENE & GERTRUDE SMITH PINNACLE ENGINEERING	HAARER'S MEETING PLACE

Announcements



- contributed by Breeda Miller

The Manchester Co-op Preschool has a project going that will create a colorful, lasting tribute to Manchester as well as help our children to grow and blossom. Through a special fund-raising project organized by Lodi Farms of Ann Arbor, you may order a bag of 50 Dutch Master (King Alfred) daffodil bulbs for \$15.90 (including tax). The bulbs will be available for pick up and fall planting on Saturday, October 7 at the Emanuel Church parking lot.

Project Daffodil started at a garden club in a small town in Connecticut and residents of that town decided to really make spring something to look forward to. These daffodils are of the highest quality bulb and will reach heights of 18-20 inches according to Jan from Lodi Farms. The bulbs will be available pre-bagged in lots of 50 or you will be able to select your own bulbs, as many of the bulbs are doubles, said Jan.

The Manchester Co-op Preschool helps to nurture the little ones in our village and for each bag of bulbs purchased, the nonprofit preschool will receive \$2. Wouldn't it be wonderful if Manchester had another "claim to fame" as that beautiful little town filled with daffodils? Order forms are available at The Enterprise, Movieland, Woodbrook, Frank's and the Manchester Market.

JOLLY FARMERETTES PLUS
4-H CLUB INDIVIDUAL MEMBER FAIR RESULTS

Jolly Farmerettes Plus 4-H members completed the 1995 4-H Youth Show with a variety of activities and accomplishments. Alphabetically listed by club member are the results of project entries.

Rebecca Alber: A ratings in food preparation, clothing construction, decorated clothing, kits and seasonal decoration.

Andrea Clark: A ratings in clothing construction, mohair fleece and several drawing & painting entries (pastel, acrylic, oil and water color.) Honors were awarded for oil and water color and for mohair fleece. Best of Show award for mohair fleece. Andrea also participated in the Flying Equestrian club with her horse. She was also honored as a graduating senior at awards ceremonies.

Jodi Feldkamp: A ratings in fiction writing, dairy foods, canning, clothing construction - wool, clothing construction - woven, buymanship, counted cross stitch, recyclable, photography, kits, collections, textiles and a B rating in holiday decoration. Honors were received in canning, both sewing projects, recyclables, kits, embroidery and dairy foods. A Best of Show award was received for food preservation, MMPA dairy food award and State Fair ribbon for needlework/embroidery.

Sarah Feldkamp: A ratings for flowering container, food preparation, clothing construction, holiday craft, counted cross stitch, recyclable and dairy foods. Honors were received for food preparation, clothing construction, holiday decoration and counted cross stitch. Best of Show awards were received in clothing construction, holiday decoration and counted cross-stitch and a State Fair ribbon in clothing construction. Sarah also was honored during awards ceremonies as a graduating senior and was recipient of a Service Club scholarship.

Hannah Goodrich: A ratings were received in dried flower arrangement, food preparation, self-determined foods, clothing construction, pencil drawing, counted cross-stitch, recyclable, papercraft, educational exhibit related to clothing and fiction writing. B ratings were received for poetry and collections.

Christine Jensen: A ratings were received for flowering container and potted outdoor flowers. B ratings were received for cake decorating and pencil drawing. Christine also exhibited angora goats and won Junior showmanship and reserve champion angora non-market goat.

Nichole Jensen: A ratings were received for hanging basket of flowers, pastel drawing and watercolor drawing. B ratings were received in flowering container and pencil drawing. Honors were received in watercolor painting. Nichole also exhibited angora goats and received champion angora non-market goat.

Suzanne Lowery: A ratings were received for hanging flowering basket, food preparation/foreign food, clothing construction, basketmaking and holiday decoration. Honors were received for clothing construction and holiday decoration.

Emily Parr: A ratings were received for flower arranging, food preparation, canning, photography,

holiday decoration, kits, other draft, ceramics and clothing construction. Honors were received in flower arranging and ceramics.

Jennifer Schulze: A ratings were received in clothing construction, dairy foods, holiday decoration, any other craft, decorated clothing and potted flowers. B rating was received for flowering container. Honor were received in clothing construction, dairy foods and holiday decoration. Best of Show award was received for Young clothing construction.

Meghan Staffeld: A ratings were received in fiction writing, dairy food, kits, jewelry and food preparation/soup. B awards were received in computer applications and candles. Honors were received for the food preparation/soup entry.

Katie Tolen: A ratings were received in food preparation/self-determined, macrame and food preparation/yeast. B awards were received in basketry. Honor awards were received for food preparation/yeast and for macrame. Katie also exhibited rabbits in the Green Acres Rabbit club and received champion showmanship and senior showmanship ribbons, Best of Breed-Havana and Best of Breed New Zealand.

Jackie Vigilanti: A ratings were received for flowering container, food preparation, clothing construction, holiday decoration and potted annual flower. Honors were received in clothing construction.

Brock Welshans: Exhibited as an "Explorer" in the 6-7 year-old age group. His exhibits were for flowering container, indoor potted flowers, food preparation and woodworking. Brock was able to exhibit in the rabbit category and received an A rating for his Rex market class rabbits and an A for his educational "club" exhibit on rabbits.

Krystal Welshans: A ratings were received in food preservation and food preparation and B ratings in potted outdoor flowers and indoor flowers. Krystal also exhibited in the livestock areas of swine and sheep. She received A ratings for sheep showmanship, pair of market lambs, pair of market hogs, market hogs individually. Krystal's market lambs were purchased by Horning Farms of Manchester and her pen of market hogs were purchased by Nina's House Daycare of Chelsea. Krystal also participated in the Animal Decorator contest and was one of the top six placings dressing herself and her lamb as "Annie Oakley".

Annie Wiley: Exhibiting angora and dutch rabbits, an A rating was received for senior buck/dutch rabbit and B rating for senior doe/angora rabbit. Best of Breed/Angora Giant and Best Opposite Sex awards were also received by Annie.

Erin Wiley: A rating was received for her photography/4-subject entry. In addition, Erin exhibited rabbits and received an A rating for senior buck/angora and senior buck/holland lop.

Mixed Bag Events: Erin and Annie Wiley also gave an impromptu demonstration on the cutting of rabbit fur as one of

their rabbits was suffering from near heat exhaustion. The onlookers were excited to see this demonstration first hand! Thanks Erin and Annie!

Brock and Krystal Welshans were also responsible for the "Sheep Sense" and "From Piglet to Pork Chop" educational exhibits in the sheep/swine barns entered under the club exhibit category as were Christine and Nichole Jensen responsible for the "Mohair" club educational exhibit in the goat tent. A ratings were received on these exhibits.

Club herdmanship awards were received for 1st place swine, 2nd place sheep and 3rd place rabbits. Club trash containers - 2 were decorated - received A and B ratings. Club exhibit in the still project building received an A rating.

We were also privileged to welcome **Marlena Grady** from Poland and **Sheila Staffeld** as visiting club exhibitors. Marlena exhibited in the areas of ceramics and kits as a "participant" ribbon winner. Sheila exhibited in the areas of collections, jewelry, kits/car, breakfast on tray, healthy lunch and decorated clothing for which she received A ratings and fiction writing and candles for which B ratings were received.

Assisting in the Service Club food booth were Suzanne Lowery, Jennifer Schulze, Jodi Feldkamp and Katie Tolen. Adult assistants were Mary Lowery and Marilyn Schulze. Thank you!!!!

Throughout the week, day care tours were given by 4-H members. Jodi Feldkamp, Jennifer Schulze, Nichole Jensen, Suzanne Lowery, Christine Jensen and Meghan Staffeld participated as tour guides. Sarah Feldkamp and Jodi Feldkamp, a 1995 4-H Ambassador, also participated in the Washtenaw County Commissioners tour.

A large thank-you to all of those who continue to support the 4-H program by volunteering time and monetary donations. We also acknowledge the support received by community newspapers in publishing articles regarding the 4-H youth in Washtenaw County.

STATE OF MICHIGAN - PROBATE COURT - COUNTY OF WASHTENAW

CLAIMS NOTICE - INDEPENDENT PROBATE File No. 95-107544-IE. Estate of BEATRICE V. VOGEL, deceased. TO ALL INTERESTED PERSONS: Your interest in the estate may be barred or affected by the following: The decedent, whose last known address was 5915 Sibley Road, Chelsea, MI 48118, died July 21, 1995. An instrument dated June 5, 1985 has been admitted as the will of the deceased.

Creditors of the deceased are notified that all claims against the estate will be forever barred unless presented to the independent personal representative, Phyllis Wurster, 120 Arden Lane, Chelsea, MI 48118, or to both the independent personal representative and the Washtenaw County Probate Court, PO Box 8745, Ann Arbor, MI, 48107 within four months of the date of publication of this notice. Notice is further given that the estate will be thereafter assigned and distributed to the persons entitled to it.

KEUSCH & FLINTOFT, P.C. Attorneys for the Personal Representative by Peter C. Flintoft, P-13531 119 S. Main, PO Box 187, Chelsea, MI 48118 313-475-8671.

**RESIDENTIAL
FARM
COMMERCIAL
INDUSTRIAL
TECUMSEH
LP GAS**



TECUMSEH LP GAS

**319 ADRIAN ST.
TECUMSEH
517-423-2359**

Member Michigan LP Gas Assoc.



**Embermatic
& Arklamatic
Gas Grills**
as Low as \$139.⁹⁵

**Parts &
Accessories**
also Helium Tanks
now in stock

Give US a Call

FIRST-TIME HOMEBUYERS TAKE NOTE!


CONSIDER OUR

MORTGAGE

PRE APPROVAL

IT'S ABSOLUTELY FREE!

FIND OUT HOW MUCH HOUSE YOU CAN HANDLE!



GREAT LAKES BANCORP

Down Memory Lane

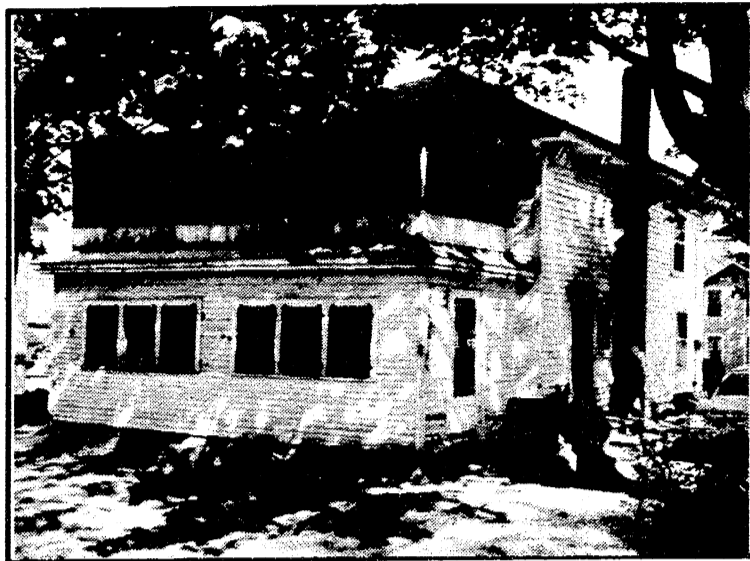
My Grandma Had A Sleeping Porch

- by Mary Ann Geiger

My Grandma Knorpp had a sleeping porch that extended across the back of her house on the second floor. It was half walled, half screened and awning-ed you could sleep out all year if you wished. In the bleakest months of our Michigan winters with the awnings down, only Aunt Linda would sleep there. She had a very strong constitution, and slept there most of her 95 years.

Aunt Linda's bed was in the center of the porch with its head raised on two by four blocks (for her heart). She had her reading lamp and pillows placed just so that she could read herself to sleep if she was not too tired. Most often she was dead to the world as soon as her head hit the pillow. She out-snored the crickets, the howling and barking of the neighborhood dogs, and you could hear her cuss from several houses away when her bed fell off the blocks, which it did several times a week during her more restless nights. She would get out of bed, heave the bed back on the blocks, mutter about the noisy dogs, and climb back under the covers. If you did not acknowledge her plight, she was sorely tried.

I spent several weeks every summer at Grandma's house (407 E. Main) under the supervision of my maiden Aunts, Linda and Loretta (Letty) Knorpp, and a very



elderly grandmother. I shared Aunt Linda's love of the sleeping porch. I would just lie awake and watch the carpenter ants chase smaller ants up and down the vines that covered the morning side of the porch. The flickering sunlight filtered through the cool green vines making warm yellow patterns of light on my quilts.

I could hear the sounds of breakfast below. The clinking and clattering of dishes and silverware being placed just so on the table, would go out the kitchen door, ricochet off the brick wall of the neighbor's house, and return to me in my little bed on the sleeping

porch. It was usually Aunt Linda's voice that ruled the conversations carried to me. It was she who ran our family, much as she ran her well-disciplined schoolroom. She was principal of the Junior High in Rochester for close to forty years, and she often substituted in Manchester schools after her retirement.

Aunt Linda had left home when she was only fourteen and worked her way through college in Ypsilanti as a hired girl for a well-to-do family. Her training in the social graces was duly impressed on her family. Much to the frustration of my cousins and myself she was determined

that we should have more of the social graces than we felt we needed, then or now.

Because my birthday was in December so close to Christmas, she had a summer birthday party for me. She set the table with the white Damask cloth and napkins she used for special occasions, arranged a lovely bouquet of flowers and set out the crystal and best china. She used goblets and cloth, fancy china and a confusing array of forks for ever meal. Far too often, as far as I was concerned.

Of course the little girls invited to my parties were from the most acceptable families in town. They wore party dresses, gloves and even hats when they arrived for the festivities. In reality it was dull and boring. I never played with those little girls if I could help it. I tolerated them for Aunt Linda's sake and the little gifts they brought.

One year a sudden thunderstorm arrived in the middle of our party. Not to be daunted when the power failed, Aunt Linda glamorized the table with a dozen or more candles in ornate silver candlesticks and we partied in the glow, while she extolled the wonder of the power in the lightning flashes and thunder. I liked that year...all those dainty little girls cringing from the storm!

Aunt Linda had a way of showing the perfection in a single oak

tree standing alone in a field. She watched every moment of a sunset, remarking on every color change. More than once she said, "Oh, Mary dear, just look at that," pointing out some wonder of nature. Every niece, nephew and child she could hold still long enough got a taste of her extraordinary zest for beautiful things, her love of music and literature, and her remarkable view of the world.

The "disciplines" she used in and out of her classroom was the bane of my existence while at Grandma's house. Aunt Linda made a list of things for me to do. I had to go uptown to the Smith Store for groceries, sweep the sidewalk every day, help Letty dust and vacuum, wash the dishes after all meals - all things that I did not care to do. I was not an indoor child. I never objected to helping Grandma pick raspberries from the patch in the back yard, feed the chickens, mow the grass, or gather flowers for a centerpiece for dinner Aunt Linda could be a hard taskmaster. She would take the broom from me after I had swept the sidewalk and say, "Now, Mary dear, do it like this," or when setting the table, "Now, Mary, wait, place the spoons a little closer."

When she could not think of anything for me to do, I was allowed to walk through town to borrow my cousin Darlene's bicycle. It

Hours:
 Sun 1 p.m. - 11 p.m.
 Mon - Thurs 11 a.m. - 11 p.m.
 Fri & Sat 11 a.m. - 1 a.m.

138 E. Main St
428 - 6543
428-Olie

NEW MEGA DEAL SPECIALS

<p>FAMILY COMBO 2 LARGE PIZZAS • ONE WITH UP TO 5 TOPPINGS FOR THE ADULTS • ONE WITH UP TO 2 TOPPINGS FOR THE KIDS 15.⁹⁹ +tax</p>	<p>\$2.⁰⁰ OFF ANY LARGE PIZZA AT REGULAR PRICE</p>	<p>1 SMALL PIZZA W/CHEESE PLUS 1 TOPPING JUST ¢.99 WITH PURCHASE OF ANY LARGE PIZZA AT REGULAR PRICE</p>	<p>CARRY OUT SPECIAL ONE LARGE CHEESE PIZZA PLUS ANY 2 TOPPINGS PICK-UP ONLY \$7.⁹⁹ + tax</p>
<p>LARGE SPECIALTY PIZZA ONE FOR \$11.⁹⁹ +tax OR TWO FOR \$17.⁹⁹ +tax</p>	<p>2 MEDIUM SUPREME PIZZAS (CHEESE, PEPPERONI, HAM, ONIONS, GREEN PEPPERS, AND MUSHROOMS) ROUND ONLY \$15.⁹⁹ +tax</p>	<p>3-2-1 SPECIAL • ONE MEDIUM 3 TOPPING PIZZA • TWO 20 OZ. PEPSIS • ONE ORDER BREAD STIX W/ SAUCE EXCLUDES EXTRA CHEESE \$12.⁹⁹ + tax</p>	<p>LUNCH SPECIAL 11 AM - 3 PM PIZZA SLICE, CHIPS, 20 OZ. POP \$1.⁹⁹ + tax</p>
<p>ANY PIZZA! ANY TOPPINGS! CHOOSE ANY SIZE PIZZA WITH ANY TOPPINGS UP TO 6. CHOOSE A FLOVORED CRUST. DELIVERED TO YOU. EXCLUDES EXTRA CHEESE \$10.⁹⁹ +tax</p>	<p>DINNER FOR 4 LARGE 2-TOPPING PIZZA PLUS 4 20 OZ. PEPSIS EXCLUDES EXTRA CHEESE \$12.⁹⁹ +tax</p>	<p>DELIVERY SPECIAL • ONE MEDIUM SPECIALTY PIZZA • ONE MEDIUM ONE TOPPING PIZZA \$13.⁹⁹ +tax</p>	<p>LUNCH SPECIAL 11 AM - 3 PM LARGE PIZZA. CHEESE AND UP TO THREE TOPPINGS \$7.⁹⁹ + tax</p>

Try our New Grinders!! ALL MUST PRESENT COUPON

Down Memory Lane

took at least three days of being exceptionally good before I could take a ride. I had to be very circumspect, because Aunt Linda knew too many people in town who would tattle on me. My Aunt Linda was certain something terrible would happen to me if she did not know where I was every moment of every day. How could she ever tell my parents if anything happened to me? There were forbidden parts of town and children I was not allowed to play with. I had a time limit and must return on the moment. I had my rules and I was expected to obey them.

Nevertheless, I talked to the wrong people, rode restlessly through the dangerous parts of town along the river and out by the Ford Plant, and explored the dump along the railroad tracks with the boys I wasn't allowed to associate with. By the time I was eight I knew every road out of town for at least five miles. Most days when I was allowed to ride the bike, I would race out of town on the "road of the day." Sometimes I even went out past the old cement factory "where bums lived", or up Ann Arbor Hill to the Arbiter Grove and the standpipe.

Because Letty was an invalid and needed a rest every afternoon, Aunt Linda insisted I be quiet during her rest. I would lie in the hammock under the apple tree in the back yard reading an approved book from Aunt Linda's library. But Lord help me if a bird "dropped" in a book. When it was too hot to lie outside or it was raining, I would take myself to the front porch. In those days it was a half walled screened porch that extended across

the front of the house. If I could get away with it I would take a wild ride on the porch swing, until the creaking of the chains in the ceiling hooks gave me away. Or I would rest on the sleeping porch with Letty and she would show me how to tat and crochet. A special treat was to take my allowance up town to the five and dime to buy the latest tatting or crochet patterns, so we could while away the afternoon.

On Memorial Day at Grandma's I would awaken at the break of dawn and lie waiting. About nine o'clock the high school band would assemble up the block at the top of Main Street hill. At the first sound of their tuning up I was out of bed, dressed, and waiting on the front porch for the band to march by. Aunt Linda would force food in me when I waited. I was allowed to follow the band to the river where the Veterans threw a wreath in, as a memorial. Then the Veterans, Girl and Boy Scouts and a pretty girl sitting in a convertible would join the parade and every one marched out to the cemetery where someone always gave a speech. It was followed by someone away off up over the hill in the back of the cemetery blowing taps. The Veterans gave a gun salute. One of the pastors from town would say a prayer and everyone would walk back into town. I never knew who these someone and were. I just thrilled to the sight and sound of the band leading the parade and coming home to tell Grandma all about it.

My favorite mornings on the sleeping porch were when I was awakened by the sound of John Schneider, the blacksmith. The blacksmith shop was across the street and three houses down from

Grandma's house. I would awake to hear John and the horses in a contest of shoeing. He would let me stand along the wall and watch. John would swing his heavy hammer overhead, smashing down on a red hot horseshoe. Then he would plunge it into a pail of water. The water boiled and a cloud of black sooted steam would rise to the ceiling.

Sometimes when John tried to measure the shoe to the hoof, the horse would snort, break the tether and dance about the barn. John would grab the halter and jerk those horses to their knees if necessary. He was very strong. I would cling to the wall in excited fear. To a suburban girl like myself, this was as dramatic as the western serials that played uptown in the theater on Saturday nights.

At days' end Uncle Toss (short for Tossalo), would come up from his house to see if his mother or sisters needed anything. I would listen for the spring on the front porch door to expand and retract in its most distinctive way. I would always get reprimands to not let the door slam - mostly because ladies did not let doors slam and in particular Aunt Linda said not to make the smallest screen door noise at night because the neighbors would know someone was on the way to the privy. Small healthy children could not use the antique indoor facility without fear of a flood. I never cared much if I made noise. Making noise scared the local cats and skunks out of my path. I preferred an animal-free trek and tolerated my Aunt's reprimand.

Uncle Toss would holler, "Who wants ice cream?" After we gave

him our preferred flavor he would go up town to Johnson's Ice Cream Parlor and get it. I think he did it just because I was visiting, and he knew how much of a trial his older sister could be to a small child. Aunt Linda would get out the Vernor's Gingerale. When he returned we would have a Detroit Cooler of ice cream and Vernor's. We might then spend the evening listening to the radio, entertaining canasta, or I would entertain. Given a chance, I was a bit of a show-off.

I would dress up in my Aunts' clothes, sing torch songs, and act out my own little plays. I liked it when Letty would play the baby grand piano and Aunt Linda would sing in her wonderfully operatic voice. Sometimes I could get Grandma to tell us stories of Germany when she was a little girl. All too soon our "Soiree" would be over and I was sent off to bed.

Going to bed was a lengthy ritual. Aunt Linda shut the house while Grandma, Letty and I retired. One by one the lights shining out into the yard would go out, as Aunt Linda made her way around the house closing windows and locking doors. Eventually Aunt Linda clumped up the stairs asking question after question - to ascertain if we were all comfortable, if I had said my prayers or not, or wanted anything from downstairs. Finally after what seemed like an eternity in the bathroom running the water, Aunt Linda would emerge from the house, turn off the sleeping porch lights, kneel to say her prayers and climb into bed.

The bedclothes rustled as she

settled. The neighborhood dogs that had barked at the closing of the house dragged their chains back into their doghouses. They too settled for the night. The striking of the Dick Whittington Clock in the hallway would be the last thing I heard if I fell asleep before Aunt Linda. If not, I was certain to fall asleep counting her snores pretending them to be little sheep leaping over little fences. I would lie there watching the moon beams through the apple tree making ghostly moving figures across the porch screens. Sometimes a little wind would flutter a book or blanket adding to my active imagination. Aunt Linda's snoring could be all sorts of monsters and dragons, yet comforting and certain.

The last time I shared the sleeping porch with Aunt Linda was not long before she died. We took a bottle of wine, crystal goblets, a Limoges plate piled with cheese and crackers, Damask napkins on a silver tray and nibbled and talked into the wee small hours of the night. I had taught her something about being decadent. Bed was no place for such a repast. Oh, what a good time we had!

Enough time has passed for me to mature and appreciate my Aunt Linda and all she tried to instill in me, and long for a few more nights on the sleeping porch at Grandma's house.

The author, Mary Ann Geiger, spent her summers here in the 1940's and now puts her crocheting and tatting talents learned during those days to use writing for a needlecrafters magazine.

MANCHESTER



Market

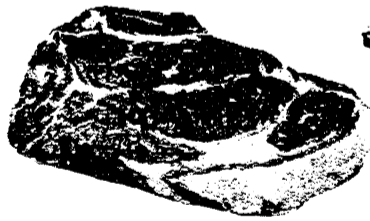
Summer Hours: 8 - 10 Mon - Sat 9 - 7 Sunday

455 W. Main

**Dannon
Yogurt** 8 oz.
2/88¢



**Porterhouse
Steak**
\$4.99 lb.



**Save Rite
Beet Sugar**
\$1.19 4 lb. bag

**Michigan
Paula Red
Apples** 3 lb. bag
99¢



**Iceberg
Head Lettuce**
2/\$1.00



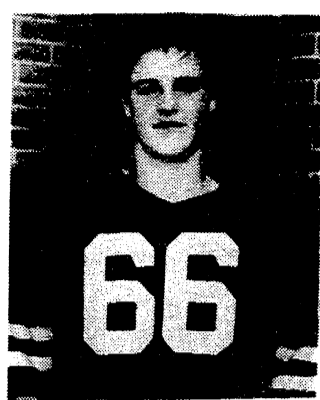
**Clorox
Bleach** 128 oz.
99¢



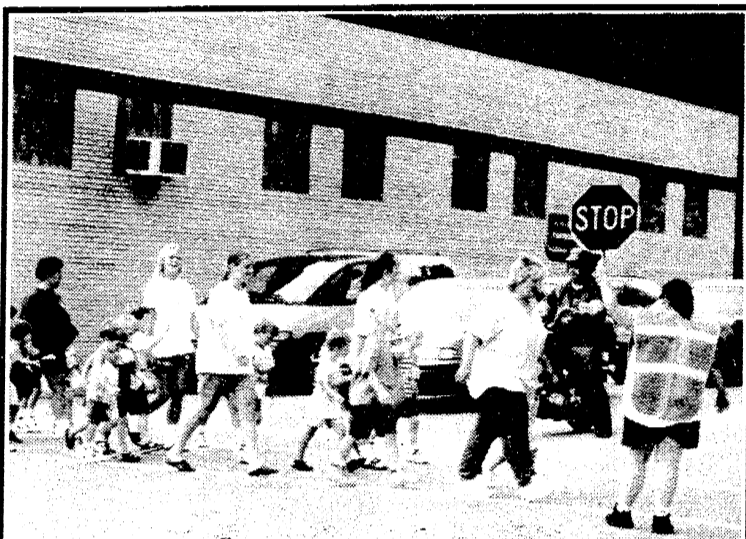
**Dynamo
Ultra Laundry Det.** 50 oz.
2/\$4.00

Sale Prices good thru August 26th

People



Wish Jon a Happy Birthday - on the First Day of School! Love, Mom & Dad



Safety town for the incoming Kindergartners included a trip on the big yellow school bus and working with the crossing guard. Over 50 children attended Safety Town which was put on by Carolyn Supers through Community Ed. Thanks to everyone who helped out!

Mary Lobbetael: Miss Do-It Has Done-It



The Enterprise staff will be a little smaller starting next week as we lose a valued employee to Western Michigan University.

Mary Lobbetael has worked with us for a year now, covering school issues at the High School and the Middle School. This summer Mary has worked as an intern at our office and her cheerful assistance has been invaluable. Despite spending long hours working at both the paper and the bakery, Mary is seldom seen without a smile on her face.

Mary's nickname at the Enterprise has been "Miss Do-It," because unlike some of us chatterboxes at the

Enterprise, she sits right down to a job and doesn't stop until she has it done! We've learned a little bit from her this summer, and we hope she's learned a little bit from us, too.

Mary's plans at Western will include doing it!

"No more tearsheets, No more folios, You don't even have to bake Any more Roll-ios"

If Annie Bananie comes looking for you we'll give her your number!

Good Luck Mary!

Olivet College Announces Graduates and Award Winners

Olivet College is pleased to announce its Spring 1995 graduates, award winners and Dean's List students. **Zoe Michelle Shurtliff** was named to the Academic Dean's List for the Spring Semester. Zoe also received the Excellence in English award, established by the late Fred W. Neuman and Rebecca Neuman McDaniel to be granted to the graduating senior woman English major demonstrating the highest scholarship in English. Zoe earned her Bachelor of Arts degree, magna cum laude, from Olivet College on May 7, 1995.

WMU June Commencement List Announced

A total of 833 persons are on the official list of those who received degrees from Western Michigan University at the end of the spring session of the 1994-95 school year.

Among the local students who graduated is **Jeffrey L. Hankamp** of Saline, son of Jim & Sherri Hankamp, with a BA in Criminal Justice.

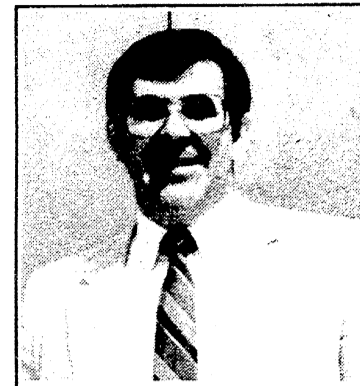
★ ★ ★ ★ ★ ★ ★ ★
★ 517 - 265 - 3055 ★
24 Hour Movie Hotline
ADRIAN CINEMA 6
3150 N. ADRIAN HWY.
Shows Before 6 PM \$3.50

FRIDAY, AUGUST 25 - THURSDAY, AUGUST 31	BABE G Fri - Mon: 1:15, 3:15, 5:15, 7:15 Tues.-Thurs: 5:15, 7:15
	A WALK IN THE CLOUDS PG13 Fri-Mon 1:00, 4:45, 7:00, 9:20 Tues-Thurs: 4:45, 7:00, 9:20
	WATERWORLD R Fri-Thurs: One Show ONLY 9:15
	MORTAL KOMBAT PG13 Fri-Mon: 12:30, 2:40, 5:00, 7:20, 9:40 Tues - Thurs: 5:00, 7:20, 9:40
	DANGEROUS MINDS R Fri - Mon: 1:45, 5:20, 7:30, 9:50 Tues-Thurs: 5:20, 7:30, 9:50
	SOMETHING TO TALK ABOUT R Fri - Mon: 1:20, 4:50, 7:10, 9:30 Tues-Thurs: 4:50, 7:10, 9:30
THE AMAZING PANDA ADVENTURE PG Fri-Mon: 12:45, 2:45, 5:10, 7:20, 9:30 Tues-Thurs: 5:10, 7:20, 9:30	

Superintendents Corner

Ron Niedzwiecki

The cost estimates for Luther C. Klager Elementary building project has been developed by our construction manager, O'Neal Construction and is approximately \$304,000 higher than was anticipated. The higher cost is due primarily to:



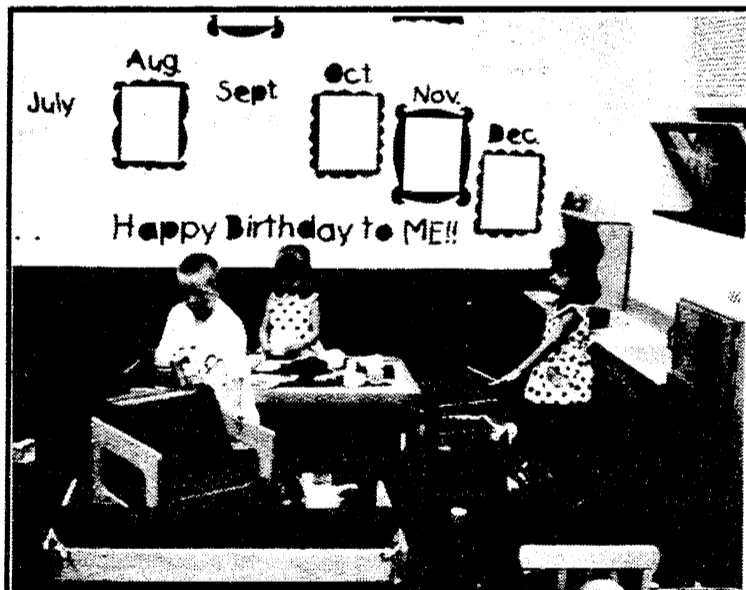
1. Soil conditions on the site resulting in greater cost for foundations, backfill and other site work.

2. Increase cost of construction in the current market.

The facility Committee has met and reviewed the estimates and site conditions. The committee members include Board members Joe Turk, John Hochstetler, Bruce Abbott; community members John Hinkley, Glen Burkhardt, Emory Garlick and myself. The committee felt that based on current information there is a need to change the original design and location on the site in an effort to reduce cost. Consideration is being given for the southwest corner of the existing building. Alternative plans are being developed with the staff. The Facility committee will meet in two to three weeks to review the plan. The original completion date of January 1997 should not be effected.



Open House at the Manchester Co-op Preschool was filled with fun & learning.



The New Look to the Co-op Preschool brightens up everyone and the surroundings. Call 428-9616 to register your child.



M.H.S. Student Council hosts picnic for Manchester's New Students and Families at Carr Park on Sunday.

Senior Citizens

MANCHESTER AREA SENIOR CITIZENS News

Are you getting quite tired of hearing about the 'birds and the bees'? Well, let's talk of insects some more—mainly those awful mosquitoes! Seniors have gone blueberrying and Rubena reports they heard a chorus of buzzing around their heads (and other exposed body parts). It probably went like this: pick and swat! Then, she told me "You know a female mosquito can be a grandmother in just 24 hours".

One small reason why we love to visit our sister state of Hawaii is the absence of flies and other obnoxious flying insects. It was good to open windows and doors on the 23rd floor of our hotel room at Waikiki Beach—of course, pigeons came into the room looking for food. In a recent Ann Arbor news article, we learned that a freeway is under construction. "When it first hit the drawing boards in 1963, the estimated cost of the 16-mile H-3 freeway was \$50 to \$70 million. When completed in June of 1997, it will have cost American taxpayers 41.23 billion." (When we were there in 1978, hubby remembers the only freeway was from the airport to downtown.) "After spending \$5 million a mile for the first six miles built between 1970 and 1972, it is now costing \$120 million a mile for the remaining 10.1 miles now under construction. The federal government paid 90 percent and the state government paid 10 percent."

"The new freeway is expected to move an average 19,000 vehicles a day across the island and back, relieving the traffic congestion on the Pali and Likelike highways. They are the only other routes between the suburban and rural areas of windward Oahu and Honolulu."

I'm sure you read this Associated Press article by Bruce Dunford. We remember the Hawaiian people and their gentle and happy outlook on life. Our bus drivers sang native songs while transporting us around Oahu. It was truly a paradise! They are being aggravated by building the freeway through Hoomaluhia Park and other peaks and valleys they hold dear. 'Hang loose' hopefully will not be destroyed in their minds.

Thursday, August 24: Tonight is the date for the Senior Citizens' sponsored public card party. It will be-



gin at 7:30 for all you euchre players at Freedom Township Hall. Bus pickup starts at 6 and you may ride along by calling Erma Alber for your spot on the bus at 428-8707.

Friday, August 25: Senior bus will leave the Center at 7:30 AM for Chelsea and Ladies' Day program at the fair. If you'd like to go, call Erma first, then go and enjoy this program just for the ladies.

We are in the process of finishing the September-October Trumpeter. Did you realize that next week is the 1st of September? Woe is me—did someone put on a special raindance for us to receive all this rain this year in August? We did need rain a while back, but isn't this a little too much?

Kirk Excavating
Sand - Gravel - Fill Dirt
Basements - Driveways
Licensed & Insured
428-7938
Dave Kirk
14180 Schleweis Road
Manchester

Manchester United Methodist Church invites you to our...
STEAK DINNER
Friday, August 25
6:00 - 8:00 p.m.
at Manchester United Methodist Church
Cost \$8.00
Tickets available at the church office (428-8495) or at the door.
Char-grilled steak, baked potato, tossed salad, roll and butter, Iced Tea or Coffee
Pop and Home-baked pie and ice cream available for an additional cost.
Kid's Menu - \$2.00
Hot dog, potato chips, pop
-rain or shine-

ABRAHAM-LINEHAN REALTY, INC.

Janice Stevenson
Salesperson
1893 W. Maumee St.
Adrian
Bus. 517-265-2164
Res. 517-431-2140
 Multi Listing Service
REALTOR MLS

PREMIER CONTRACTING INC.
Full Service Residential Building & Remodeling
"Let us help you with your building plan"

Lots Currently Available
Ron Milkey
(313) 428-9826


A Good Selection of New and Used Cars On Our Lot
TIRB CHEVROLET & GEO
Don't Get Disturbed..See Tirb!
A Metro Detroit Chevy Dealer
428-8212 • 131 Adrian St., Manchester

FUN-FILLED DAYS AT Brooklyn Living Center
151 Constitution Ave., Brooklyn, Michigan
592-2828



June VanCamp, Lucy Cottrell, Ruth Boyden, Vera Green

Life certainly does not end at 55, and make sure of it with an active lifestyle. Enjoy our many fun-filled days with parties, trips, out to eat, cards, movies, special entertainment and events.

Ganton Retirement Centers Inc.

"The Finest in Retirement Living"

NEW & USED CAR SALES

Stop in
Take advantage of the rebates on model year-end Clearance Prices!



475-1800 or 475-1301 Neil Horning

THE AWARD WINNING DEALER
PALMER
Michigan's Oldest Ford Dealer



If you can't hear, how can you listen?

Are you tuning people out because you can't hear what they say? Do you get tired of asking people to repeat themselves?

These are common signs of hearing loss. For a complete hearing evaluation—and hearing aid fitting, if necessary—call Chelsea

Community Hospital's certified audiologist today. We can make a big difference in the way you hear which can make a big difference in the way you feel.

Hear better: call 313/475-3924

ReSound AT&T Technology available



Chelsea Community Hospital

Most major insurances accepted
Senior Health Connection discount 5%
Credit cards and payment plans

School



P.ositive
A.ccommodations
S.timulate
S.uccess

JUST THE WAY I AM

- Do you wish you were taller - or - shorter?
- Do you wish you had blue eyes instead of brown?
- Do you wish you hadn't gone bald?

All of these characteristics you got from your parents. There is really nothing you can do about any of these - or the many, many other traits that are part of your genetic make-up.

- Did you know having difficulty spelling is also inherited?
- So is having difficulty reading & having trouble comprehending what you read.
- So is having difficulty with math concepts & memorizing math facts.
- So is having a short attention span & having trouble following directions.
- So is having trouble making letters correctly.
- So are many other characteristics required to be a 'whiz' at school.

If your child has any characteristics that hinders their performance at school, how do they cope? How do they maintain their self-esteem? Do they (and you) know that there are tools and accommodations for them?

- For spelling problems - use a Franklin speller or another spell checker.
- For reading problems - use books-on-tape available at libraries or have things recorded for you through the "Recording for the Blind and Dyslexic" organization.
- For math problems - use calculators, computer spreadsheets or other computer software that is set-up to do math tasks.
- For attention problems - use medication or special planners.
- For writing problems - use Dictaphones or recorders.

These are just some examples, there are many other tools and accommodations used not only by students but by many professionals in real jobs. More tools are invented every day - and more accommodations are tried every day. Help your children accept themselves - teach them not to wish they were someone else or some other way. This means that you accept them also and that you work with teachers and other school personnel to help incorporate your child's special needs as part of the normal classroom processes. Explain to friends and family that having to use a spell checker or taking medication to stay on task is no different than wearing eye glasses, false teeth, hearing aids, etc. Everyone is special for who they are.

MAKE THIS SCHOOL YEAR THE BEST YOUR CHILD HAS EVER HAD!

P.A.S.S. is a parent/student support group. We are still on our summer schedule - meeting every Wednesday at 7 PM at Klager. Our phone number for messages is 428-0738.

**Due to the increase
 cost of meals the
 school lunch prices
 have increased**

Type "A" Lunch \$2.00
Adult Lunch \$2.65

Sula Darlene Jeffers

ATTORNEY AT LAW
 146 E. Main Street
 P.O. Box 625
 MANCHESTER, MI 48158

(313)-428-8190

**New Teachers
 at Klager**

Once again, it was a tough choice for Ms. Yvonne Henry as she hired two new teachers for the coming year at Klager. "There were so many great people who applied," noted Henry. "It's always rewarding and we know we have the best teachers available."

In second grade, Mrs. Mary Fielder of Manchester will be establishing her classroom this fall. Mrs. Fielder is no stranger to the Klager Kids. She has been a long term sub in the second grade, and did her student teaching under Mrs. Janice Little three years ago. She is trained in Math Their Way and Math, A Way of Thinking, and is working on a Masters Degree in Reading. Mary is a cum laude graduate of Eastern Michigan University.

The Chapter I half-time position will be filled by Michele Wilkins. Ms. Wilkins comes to us from Ann Arbor where she was a "skills facilitator" at Wines Elementary school. She has worked with at risk students as well as able learners and created a parallel program to Chapter I called "Listening, Reading For Meaning, and Problem-Solving" while at Wines. Ms. Wilkins is also a graduate of EMU and has a strong background in dance. Michele will be encouraged to share her extensive travel experiences with the Klager Kids.

Ms. Henry is delighted to have two such talented teachers on staff at Klager. And the kids are waiting to meet them, too!

**Middle School
 News****6th & 7th Grades go
 to four sections**

With the class size growing at the 6th and 7th grade level Mr. Schick needed to hire two new half-time teachers. Corinne Kastel is the new 7th grade half-time teacher in Math and Social Studies. Corinne is a first year teacher graduating from the University of Detroit and she lives in Tecumseh. This will be a great challenge for Corinne as she enters the teaching world here at Manchester and we welcome her to our staff. Kurt Fielder has moved up to 6th grade to fulfill the fourth section.

There is a half-time position open for a 5th grade special education teacher will be filled by Friday (Mr. Schick was finishing up his interviewing at press time).

Mary Brinker held the Chapter I and at risk position last year and made the lateral move into the 5th grade classroom opening due to Fielder moving up to 6th.

Mr. Schick stated, "It will be awfully nice to have 4 sections of 6th and 7th grade, which will relieve the overcrowding. The addition at the middle school will be perfect timing for the projected growth here in Manchester."

Back to the Bowl

The Varsity Cheerleaders received another bid to the Citrus Bowl this year: L-R: Lisa DuRussel, Christie Rothcoe, Tonya Ward, Heather DuRussel, Suzanne Lowery, & Renee Foster

Just recently Manchester's Varsity and Junior varsity cheerleading squads attended a UCA cheerleading camp at the University of Michigan.

During the course of this camp they learned nine sidelines and nine cheers. What is the difference? Well sidelines are just a shorter cheer which is repeated four times. They also participated in a jump off on the second day and team member Suzanne Lowery made it into the semifinals.

The squad also learned how to use signs to encourage more crowd involvement, how to work on their tumbling skills, new stunts and how to do them the safest way, three dances and more ways to condition. This camp was four days long with an optional camp championship on the last day in which the squads could compete with their cheer and sideline.

The difficult part to this was that the cheer and sideline had to be among those that were learned from camp. Of course, so did all of the other squads - so Manchester had to add our own squad's personal touch by including stunts, level changes, ripples, or floor movement into them.

With this in mind, both squads wanted to do their best. And without a coach along to make sure they did everything, they had to work even harder. MHS entered the championships feeling a little small compared

to those squads who looked like armies with their thirteen girls. The JV who had four returning sophomores and one new girl, spent the entire night practicing. They put on a great show, doing their best ever, and received a small superior trophy for their improvement. They also earned many blue superior ribbons and a spirit stick.

The varsity team won second place and received a large superior trophy. They also earned six blue superior ribbons, two red excellent ribbons, one yellow superior ribbon, and a spirit stick. Most importantly, they received an invitation to Citrus Bowl 1996. Heather DuRussel & Katie Roberts also received invitations to attend the Macy's Thanksgiving Day Parade with the UCA.

The Cheerleaders want to thank the Manchester community for their support of attending cheerleader camp. This has been a very important aspect of their improvement over the past two years. Among the fund-raising activities to help them along the road to the Citrus Bowl again will be the second annual Cow Plop contest. Watch the Enterprise for information on other events during the fall season. The cheerleaders hope the community will support them again this year in their efforts, because they have earned this honor through their hard work and teamwork.

-contributed by Heather DuRussel



JV Cheerleaders: Back Row, L-R: Kattie Roberts, Dana McCalla, Mary Ann Fillyaw. Front Row, Michelle Roos & Keenan Shurtliff

Manchester Fall Sports Schedule



MIDDLE SCHOOL GIRLS BASKETBALL

FRI. SEPT. 8	CHELSEA SCRIMMAGE	
	8TH GRADE (H)	4:30
	7TH GRADE (A)	4:30
MON. SEPT. 11	MICHIGAN CENTER (H)	4:30
WED. SEPT. 13	ADDISON (A)	4:30
MON. SEPT. 18	ANN ARBOR	
	ST. FRANCIS SCRIMM. (H)	4:30
WED. SEPT. 20	EAST JACKSON (H)	4:30
MON. SEPT. 25	VANDERCOOK LAKE (H)	4:30
WED. SEPT. 27	NAPOLEON (A)	4:30
MON. OCT. 2	HANOVER-HORTON (H)	4:30
WED. OCT. 4	GRASS LAKE (A)	4:30
MON. OCT. 9	NAPOLEON (H)	4:30
WED. OCT. 11	VANDERCOOK LAKE (A)	4:30
MON. OCT. 16	COLUMBIA CENTRAL (H)	4:30
WED. OCT. 18	GRASS LAKE (H)	4:30
8TH GRADE COACH: STEVE MCCALLA		
7TH GRADE COACH: MARK BALL		

VARSITY FOOTBALL

FRI. SEPT. 1	CLINTON (H)	7:30
FRI. SEPT. 8	ADDISON (A)	7:30
FRI. SEPT. 15	NAPOLEON (H)	7:30
FRI. SEPT. 22	VANDERCOOK LAKE (H) HOME COMING	7:30
FRI. SEPT. 29	EAST JACKSON (A)	7:30
FRI. OCT. 6	MICHIGAN CENTER (A)	7:30
FRI. OCT. 13	HANOVER-HORTON (A)	7:30
FRI. OCT. 20	GRASS LAKE (H) PARENTS NIGHT	7:30
FRI./SAT. OCT. 27/28	BIG EIGHT X-OVER (TBA)	T.B.A.

HEAD COACH: WES GALL
ASSISTANTS:
 MIKE BLUMENAUER
 CURT FIELDER

MIDDLE SCHOOL FOOTBALL

WED. SEPT. 20	VANDERCOOK LAKE (A)	4:30
WED. SEPT. 27	ADDISON (A)	4:30
WED. OCT. 4	NAPOLEON (H)	4:30
WED. OCT. 11	EAST JACKSON (H)	4:30
WED. OCT. 18	NORTHWEST (A)	4:30
TUES. OCT. 24	CHELSEA (A)	4:30
8TH GRADE COACH: JEFF ETZEL		
7TH GRADE COACH: JAY GILLOW		

JUNIOR VARSITY FOOTBALL

THUR. AUG. 31	CLINTON (A)	6:00
THUR. SEPT. 7	ADDISON (H)	7:00
THUR. SEPT. 14	NAPOLEON (A)	7:00
THUR. SEPT. 21	VANDERCOOK LAKE (A)	7:00
THUR. SEPT. 28	EAST JACKSON (H)	7:00
THUR. OCT. 5	MICHIGAN CENTER (H)	7:00
THUR. OCT. 12	HANOVER-HORTON (H)	7:00
THUR. OCT. 19	GRASS LAKE (A)	7:00
THUR. OCT. 26	MORENCI (H)	7:00

HEAD COACH: DICK FIELDER
ASSISTANT: JIM FIELDER

VARSITY GOLF

THUR. AUG. 17	MANCHESTER TOURN. (H)	9:00
MON. AUG. 21	MORENCI (A)	8:30
THUR. AUG. 24	ONSTED (H)	10:00
FRI. AUG. 25	BLISSFIELD INV. (A)	4:00
TUES. AUG. 29	ADDISON (A)	4:15
THUR. AUG. 31	BLISSFIELD (H)	4:00
FRI. SEPT. 1	DUNDEE (A)	4:00
TUES. SEPT. 5	NAPOLEON (A)	4:15
MON. SEPT. 11	SAND CREEK (A)	4:00
TUES. SEPT. 12	EAST JACKSON (A)	4:15
THUR. SEPT. 14	COLUMBIA CENTRAL (A)	4:30
MON. SEPT. 18	CLINTON (H)	4:30
TUES. SEPT. 19	HANOVER-HORTON (A)	4:15
MON. SEPT. 26	JAMBOREE (H)	4:15
TUES. OCT. 2	CLINTON (A)	4:00
TUES. OCT. 3	MICHIGAN CENTER (A)	4:15

HEAD COACH: JOHN KORICAN

CROSS COUNTRY

Wed. Sept. 6 East Jackson Invitational (Portage Lake) TBA
 Thurs. Sept. 14 Spring-port Invitational 4:00 PM
 Sat Sept. 16 Holly Invt'l 9:00
 Tues. Sept. 19 Michigan Center & Grass Lake at Grass Lake 4:30
 Sat. Sept. 23 Jackson Invitational 11:00 AM
 Tues Sept. 26 Vandercook Lake & Napoleon at Napoleon 4:30
 Tues. Oct. 3 East Jackson & Hanover Horton @ HH 4:30 PM
 Sat. Oct. 7 Hudson Invt'l TBA
 Tues. Oct. 10 at Addison 4:30
 Sat. Oct. 14 Gabriel Richard Invitational 9:00 AM
 Thur Oct. 19 Conf. Meet 4:00
 Sat. Oct. 28 Regional Meet TBA
 Sat. Nov. 4 State Meet TBA
Head Coach: Craig Vitale

VARSITY & J. V. GIRLS BASKETBALL

TUES. AUG. 29	CLINTON (A)	5:30
THUR. AUG. 31	MILAN (A)	5:30
TUES. SEPT. 5	SALINE (H)	5:30
THUR. SEPT. 7	CHELSEA (H)	5:30
THUR. SEPT. 14	HANOVER-HORTON (H)	5:30
TUES. SEPT. 19	STOCKBRIDGE (H)	5:30
THUR. SEPT. 21	MICHIGAN CENTER (A)	5:30
TUES. SEPT. 26	NAPOLEON (H)	5:30
THUR. SEPT. 28	GRASS LAKE (A)	5:30
MON. OCT. 2	ADRIAN MADISON (A)	5:30
THUR. OCT. 5	VANDERCOOK LAKE (H)	5:30
TUES. OCT. 10	EAST JACKSON (A)	5:30
THUR. OCT. 12	ADDISON (H)	5:30
TUES. OCT. 17	HANOVER-HORTON (A)	5:30
THUR. OCT. 19	MICHIGAN CENTER (H)	5:30
TUES. OCT. 24	NAPOLEON (A)	5:30
THUR. OCT. 26	GRASS LAKE (H)	5:30
TUES. OCT. 31	VANDERCOOK LAKE (A)	5:30
FRI. NOV. 3	EAST JACKSON (H) PARENTS NIGHT	5:30
TUES. NOV. 7	ADDISON (A)	5:30

HEAD COACH: JOHN WILKINS
JV COACH: DENNY STEELE

FLAG POLES

For Home and Yard
 WOOD & ALUMINUM POLES
 -ALSO- U.S. & FOREIGN FLAGS

 617 S. Ashley, Ann Arbor (313) 665-9126



Manchester Invitational Results

The First "Manchester Invitational" was held on August 17 at Gauss' Green Valley Golf Course. Overall, the Invitational was a success, even though we had to duck the rain and thunder and the event was dropped from 18 to nine holes.

Winning was a first year team from Napoleon. East Jackson Finished second, third was Ann Arbor Gabriel Richard, Manchester with a 184 was in fourth place, Lenawee Christian and Sand Creek finished 5th and 6th. The Dutch were led by seniors Marcus McNamara at 43 (a Career best), Jason Barnes 44, Mike Ridenour 48, and Dan Kwolek 49.

Our next match will be held on August 24 with Onsted at Green Valley.

MANCHESTER YOUTH BASKETBALL

WHAT: Boys and Girls youth basketball league for grades 4-6.

WHERE: Manchester High School

WHEN: Boys beginning Saturday, September 16, 1995 from 6:30pm til 9:00pm.

Girls beginning Saturday, September 16, 1995 from 9:30am til 11:30am.

COST: \$30.00 per player



The formation of a Manchester Youth Basketball League is here once again. This program is for boys and girls, grades 4th through 6th. This league will run every Saturday beginning September 16 thru Saturday December 9, 1995.

This is a 12 week program focusing on introducing and developing the fundamentals necessary to succeed in the game of basketball. The first five weeks will be spent on drills designed to improve each child's skills. Players will then be divided into evenly matched teams. Beginning in week 6, teams will then be matched in 3 on 3 competition. In weeks 6-11 teams will play 2-4 league games each Saturday. Weeks 6-11 will be our regular season. In week 12, we hope to have a double elimination tournament.

The cost of this league is \$30.00 per player. Each player will receive a Manchester Youth Hoops T-Shirt. All surplus money will go into a fund that will be used exclusively for boys and girls Jr. High basketball as well as boys 9th grade basketball. Ken Branch will be serving as our girls director. Steve McCalla will be serving as our boys director as well as our program coordinator. Neither Steve or Ken will be receiving compensation for their time. This program has been endorsed by the Manchester Athletic Department. I would urge you to consider allowing your child to participate in this program. Rather than answer the same questions repeatedly, I will be available 1 hour prior to the boys first practice on Saturday Sept. 16, 1995. Ken will be available to answer any questions concerning the girls program 1 hour prior to the girls first practice Saturday Sept. 16, 1995. The deadline for signing up will be Saturday Sept. 16, 1995. You may sign-up on site at the high school. This is a non-refundable program.

Checks should be made payable to: MANCHESTER ATHLETIC DEPARTMENT in the amount of \$30.00. SIGN UP EARLY.

"DON'T WAIT TO SIGN UP"

Watch for Registration Forms to come home the first week of school!!

Golf - Golf - Golf HICKORY STICKS GOLF CLUB

**Fri. Sept. 1st - Mon. Sept. 4th
 18 Holes w/ cart \$25 / person**

**For Reservations
 Please Call (313) 913 - 8140
 8753 Pleasant Lake Rd.**

FUND RAISING

**Manchester Sportsman Club
 8501 Grossman Rd.
 Friday 6:45 p.m.**

**Manchester American Legion
 203 South Adrian
 Saturday, 7:00 p.m.**

The Manchester Academy For The Arts

**Fall Workshops
 Art, Theatre, Dance, Music**

7:00 AM - 6 PM 428-8600



LOANS BY PHONE - LOANS BY PHONE
*** Homeowners ** Cash Fast ***
 • 1st & 2nd Mortgage purchase or refinance
 • Land contract refinancing • Home or Rental Property • Slow Credit OK • Bill Consolidation • Fast • Easy • Call 24 Hours
Allstate Mortgage & Finance Corp.
 800-968-2221
FREE Pre-Qualification

CLASSIFIED

SERVICES

Lost or Found a Pet? Call the Huron Valley Humane Society. 662-5585.

Fielder Painting: Interior and exterior. Free estimates. Senior citizen discount. Phone 428-8506 tfn

Farmers' Sand and Gravel.

We deliver and spread driveways. 475-8850 tfn

TRUCK LETTERING

Boats, windows, vehicles, etc. Signs (wood, plastic, metal and magnetic).

Arnie's Lettering - Munith (517) 596-3243 tfn

Benedict Painting: Call Chuck for free estimates. 15 years experience - interior & exterior painting. 517-536-4812 tfn

Piano Tuning and Repairs: Qualified Technician since 1977. Ronald Harris, 475-7134. 12/31

Alber Excavating - Sand - Gravel, basements, drainfields, top-soil, snow removal. 428-0865 tfn

Stump Grinding & Lot cleanup with a bobcat A11 - Free estimates. R & L Landscaping 428-1675 tfn

Field and Lot Mowing: Please call 428-7822. Ask for Tom. tfn

Need a Pet Sitter? Call Lisa 428-0121

References available 8/23

Flea Problems? We have the solution for Man or Beast. Check our pest controls. Atlas of Manchester. 428-7077. 8/24

PRESCHOOL/ DAY CARE

Preston's Day Care has openings for before and after school care - hours 6-6. 428-9883 8/31

Jennifer's Daycare. Full time openings available now. Fall enrollment - 2 1/2 year old play group Wed. mornings, 3 and 4 year olds Tues. and Thurs. morning. Former Preschool teacher 428-8839.

Jennifer DuRussel's Day Care M-F, 7-5

Have fun and be involved in your child's education. Join the Manchester Co-op Preschool. Classes available for 3 & 4 year olds. Call Siobhan at 428-9616 for information or registration. 9/7

Open enrollments now being accepted at Little Dutch Child Care Center for children 2 1/2 - 12 years. Fall programs start August 28. 428-8988. 8/23

Kastanis Daycare - License DF810067266. One opening for Tuesdays and Thursdays. Two openings for Fridays. 6am-6pm. M-F Saturdays by special arrangement. Anne Kastanis 428-9806.

Tracie's House has full-time child-care. Located in the village. Nutritious meals, out door play, pre-school activities, in a home atmosphere, licensed. 428-0653. 9/7



DOODLE-BUG DAY-CARE

Licensed Children 1-5 years

Full-Time Openings

428-8628

Darlene Alber

CHILD CARE

Experienced, licensed day-care. Full time positions available. Planned activities and field trips, arts, crafts, outdoor play and old-fashioned fun! Informal preschool program beginning in Sept. Call Mary at 428-7779. 8/24

HELP WANTED

ROOFERS

Experience helpful, but will train those willing to work. R.D. Kleinschmidt, Inc. corner of M-52 and Sharon Valley Rd. (313) 428-8836. 8/31

TV or VCR Technician Full or part-time Food and Lodging provided. 313-665-5788. 8/31

Haarer's Meeting Place now taking applications for wait staff. Apply at 223 E. Main Manchester Tues.-Sat. 428-9500. tfn

Administrative Assistant/ Receptionist

Professional mortgage services office in Ann Arbor needs a well rounded personality to handle multi-line phone system, data entry for accounts payable/receivable, support for the Marketing Dept. and other administrative tasks. Permanent, full-time position available August 21st Call (313) 761-1987 for an interview. 8/24

CAREER OPPORTUNITIES

in Nursing care
Chelsea Retirement Community will begin Competency Evaluated Nurse Aide (CENA) training on September 18, 1995 in a classroom and clinical training atmosphere for individuals who show a genuine interest in becoming certified. Motivated individuals wanting to learn about a career as a Competency Evaluated Nurse Aide (CENA) should complete an application and/or contact Amy Uphaus, RN at CRC by September 8. Applications available at Chelsea Retirement Community, 805 W. Middle, Chelsea, MI 48118 or call (313) 475-8633 ext. 425 for more information. E.O.E. 8/24

Home Health Aides - seeking experienced Home Health Aides to work in Dexter, Chelsea, Manchester area. Call Friends Who Care 428-1242 9/14

Chelsea Big Boy - All positions available. Apply in person, 475-8603. 1610 S. Main, Chelsea. tfn

BLUE JEAN JOBS!

We are very busy! If you are at least 18 years old, have a phone in your home, and have reliable transportation, apply today between 8-10am or 1-3pm.

You must be able to work 40+ hours a week. All shifts available!

7am-3pm 3pm-11pm 11pm-7am

ADIA

3080 Washtenaw Ave. In K-Mart Plaza 572-8880 8/31

Sandwich Artist Needed

Part-time, Full time, days, evenings, and weekends. Chelsea Subway. 1107 S. Main St. Chelsea. 8/31

ATTENTION "MOMS"

Looking for some extra money?? Chelsea Subway is in need of part-time help during lunch hours (M-F) while kids are in school. Chelsea Subway, 1107 S. Main St. Chelsea. 8/31

HELP WANTED

Actual Positions Available! Immediate full time positions are available in this area!

- Assembly
- Packaging
- Machinists
- Maintenance
- Industrial Machinery Painters
- General Laborers

- Executive Secretaries
- Administrative Assistants
- Word Processors
- Data Entry Operators
- Receptionists

Call for more information!

PERFORMANCE PERSONNEL
Performance with a Promise
313-668-6933 8/31

General Motors dealer in Chelsea Michigan needs new and used car sales person. Some experience required. Knowledge of leasing would be helpful. Good benefits and pay plan. 313-475-8663. Ask for Bill Morrow.

TEMPORARY SECRETARIES

THE UNIVERSITY OF MICHIGAN Temporary Staffing Services has immediate openings for full and part-time Secretaries. We are seeking well-qualified applicants who have had progressively responsible secretarial experience, are able to type 45 wpm or more, and who have had experience on one or more of the following software packages: Word for Windows, Excel or Wordperfect. Minimum hourly rate is \$8.50 per hour.

For consideration, apply at:

THE UNIVERSITY OF MICHIGAN Temporary Staffing Services
G250 Wolverine Tower
3003 South State Street
Ann Arbor, MI 48109-1281

A NON-DISCRIMINATORY, AFFIRMATIVE ACTION EMPLOYER

TEMPORARY LABORERS

THE UNIVERSITY OF MICHIGAN Temporary Staffing Services has immediate full-time and part-time openings for groundskeepers, custodians, and stockkeepers. Schedules vary. Minimum salary \$6.00 per hour.

For consideration, apply at:

THE UNIVERSITY OF MICHIGAN Temporary Staffing Services
G250 Wolverine Tower
3003 South State Street
Ann Arbor, MI 48109-1281

A NON-DISCRIMINATORY, AFFIRMATIVE ACTION EMPLOYER

AGRICULTURAL SUPPLIES

LG Seeds (AMCORN) Red and White Wheat, Clovers, mall seeds, Alfalfa. We carry Alfa Graze. AGRI ENTERPRISES 428-9247. 8/24

Power Fence Supplies. All Livestock types using the Gallagher System High Visibility House Fencing available. ARC POWER FENCES 428-9247. 8/24

FOR RENT

Efficiency apartment for rent. Downtown Manchester. Call 428-9202. tfn

OFFICE SPACE FOR RENT 550 sq. ft.: Heat, lights, air conditioning furnished. On Main St. Call (313) 428-8510 tfn

Farm House Apartment. - 2 Bedroom, Between manchester and Saline. Available in July. Desirable for couple. \$625 / Month, plus deposit. Includes heat and water. Call Don (313) 453-5494 tfn

Large 1 bedroom 1st floor apt. No smoking, no pets. Available Sept. 1 \$450/month. Please call 428-0121 tfn

Large 1 bedroom apt. newly decorated with lots of extras. No pets. \$525 428-9570. tfn

HOMES FOR SALE

Raisen Riverfront scenic view from spacious 3 bedroom home. Large country kitchen, enclosed porch, garage. Close to schools and shopping. PRICED TO SELL \$109,900. Call Pete Schmitz, Archway Properties Inc. (517) 764-4554 or (517) 592-3811. (128 R PS) 8/24

1992 1350 sq. ft. Manufactured Home in Manchester Manor. Open floorplan includes 3 bdrms, 2 bths, new central air, large kitchen with island and large deck on premium outer lot. LOT 28. \$47,000 428-0657. 8/31

7630 Ernst - Manchester. 99.88-acre farm w/ house, outbuilding, plus 4 1/2 acre lake. \$315,000

Bethel Church Road - Manchester. 8.56 acre with rolling hills. \$35,900. Call Glen, eves 313-429-7567 about wither these listings. Glen R. Macomber Real Estate, Inc. 313-429-9449. 8/24

ANTIQUES

Manchester Antique Mall: 35 Dealers. Open 7 days 10-5. 116 E. Main. 428-9357. tfn



ANN ARBOR ANTIQUES MARKET THE BRUSHER SHOW Saturday & Sunday Sept. 16 & 17 8 AM-4 PM, 5055 Ann Arbor Saline Road Exit 175 off I-94. Over 300 dealers in quality antiques and select collectibles. Admission \$4.00, 27th season. The original!! 11/5

SPECIALIST WANTED

Mrs. Miller's 4th grade classroom needs a hot air balloonist to be a guest speaker to our class and talk about weather, weather terms, and how it relates to "ballooning". We need you for September. Call 428-7317. Thank You. 8/24

WORK WANTED

New resident, home health aide seeking private duty - experienced in lifts, catheters, housework. Call Jim at 428-0859, message please. 8/24

PETS

Cute kittens many colors, especially white and Siamese. All house trained, raised in-house but now live outside. Free call 428-8645 evenings. 8/31

GARAGE SALES

Yard and Porch Sale August 24-25 9:30 to 5 20641 E. Austin Comic books, baseball cards, bike and lots of misc.

Garage Sale, August 24-25 9-3 15651 Easudes Rd.

Yard Sale. 8/26/95 10am-2pm 319 E. Duncan.

3 family Garage Sale Sat. Aug 26th, 220 Wolverine Manchester 9-5.

1st House on Burmeister east of Clinton Rd. August 25th & 26th 10-5. Furniture, baby furniture, refrigerator, hooked-on-phonics, boat motor, fishing items, clothes, and toys, etc. In case of rain will be postponed until Sept. 1 & 2.

Multi-family sale. 518 E. Duncan. Thurs. Aug. 24 - Sat. Aug. 26. 9am-6pm. Clothes from infant to adult and maternity; baby changing table; toys; stamps; charcoal smoker; bikes; household items; sink; waterbed heater & mattress; decorative fireplace; avon and lots of misc. Come check out our day-care table too!

Garage Sale Lots of misc. 317 Vernon St., Sat. Aug. 26 9-2.

MISC FOR SALE

Davenport and over-stuffed chair. 413 Territorial. 8/24

RIDING LAWN MOWERS AND GARDEN TRACTORS. All Reconditioned Ready to Mow. Please call Jon at (313) 428-7296

McCulloch Saws - New 95 McCulloch chainsaws are out at '94 prices. Bars, Chains, Oil and other saw accessories available. Earl Alber 313 - 428 - 8707. Lawn Mower Servicing tfn

Thomas Organ and bench. Electric, double key board. In mint condition. Marge Bentschneider 428-8567. 8/24

American Standard one piece toilet 1.6 gal. Paid 206.00 Sell for 100.00 428-7477. 8/24

LOST

1 1/2" Gold Fish Charm from a necklace on Monday, 7/24. Red Stone Eyes. Fish body is jointed. Not valuable, but sentimentally valued. Reward. Call 428-8831.

VEHICLES

Hard top only. From Jeep Rangler \$500 428-8567. 8/24

THANK YOU

We wish to thank all our friends, neighbors, and family for their many kind expressions of sympathy and condolence during the recent illness and death of our wife, mother and grandmother. We especially thank the nurses from First American Home Care., Rev. Richard Hardy, and Jenter-Braun Funeral Home.

Lawrence Bloom Ethelyn & Donald Rhes Gertrude & Richard Kensler & Families.

KID'S CLUB

A latchkey program for kids in grades K-6. Open 7am-6pm. Come join us for games, arts and crafts, sports, cooking, field trips, and much more! Nutritious breakfast, lunch and snack. Enroll now for fall. Call Colleen at 428-8529. 8/30

CLASSIFIEDS

WANTED

OLD ORIENTAL RUGS WANTED

Any size or condition
1-800-443-7740 9/13

FOUND

2 male dogs, black with white chests. Saline area, call 429-3485 or 446-8323.

Found Dog. Looks like yellow lab, mix, young male, gentle, found on corner of Bowens and M-52. 428-7917

Nice black/white male puppy, possibly hound on Eisman Road. Blue Nylon & Flea Collars. Call 428-7234.

Brown and White male Beagle 8/19/95 on Iron Lake in Manchester. Lovable house pet. Flea collar, no tags. Call Lenewee Human Society and ask about Leon.

BE YOUR OWN BOSS

Be Your Own boss work at home \$1,000.00/wk stuffing envelopes SASE VG Enterprises P.O. Box 1173, Granite City, IL 62040. 9/6

IN MEMORY

In memory of Verla R. Smith who died 30 years ago August 28, 1965.

A million times we've needed you

*A million times we've cried
If love alone could have saved you*

You never would have died.

*In life we loved you dearly,
In death we love you still
For in our heart you hold a place*

No one could ever fill.

*God saw that you were tired
Even though we didn't want to see*

So he puts his arms around you

And whispered, "Come with me."

A golden heart stopped beating

*Hard working hands to rest
God broke our hearts to prove to us*

*He only takes the "best".
Sadly missed by children and grandchildren.*

DeVern & Sylvia - Rich-Ron-Ken

Gary & Margaret - Lynne-Tom-Laurie

Grant & Jean - Cathy-Chuck-Doug

Cont. from pg. 1

acquired by the Gallup-Silkworth Petroleum Company. During this time frame the top two stories were removed and the front of the building including the lobby area was also removed to build a gas station.

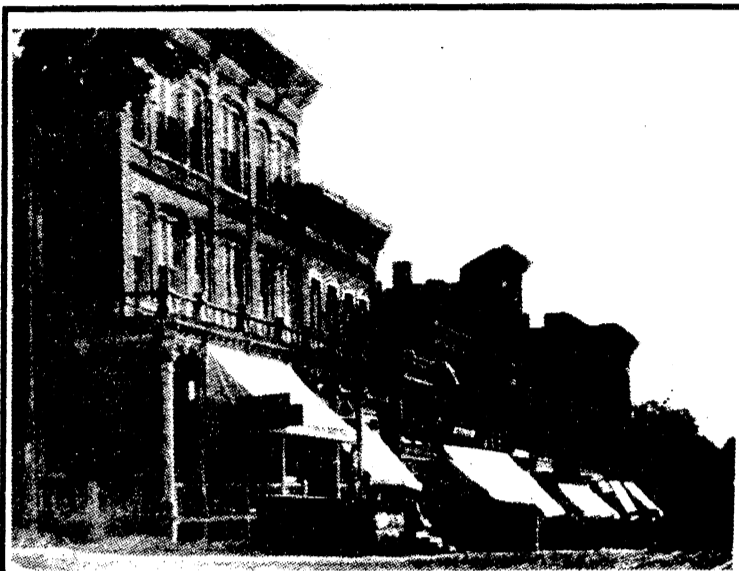
In 1952 Grossman - Huber leased the building and operated the business for over thirty years. A drive through car wash area next to what is now Frank's Restaurant provided part time jobs for many young lads of the area. A fuel storage tank area was part of the operation. The

tanks were located on Ann Arbor hill next to the old rail road tracks. That parcel of property has become a part of Char-Bro Park.

The renovations at the Hop-In will include filling in of the old oyster bar basement area. Reconfiguration of the main

floor area will include the addition of a Sub-Shop. A Handi-cap lift will be a part of the construction that will allow access to the elevated Sub area from the entry level. Looks like a part of the old Goodyear House will go into the 21st Century.

- by Emory Garlick



Hop.in sets on the site of the old three story Goodyear Hotel, later named the Freeman House



Freeman House lobby, behind which was the main dining room

Boing.

Sounds like another satisfied Step-Up CD customer.

- 5.75% APY 7 - month
- 5.85% APY 11 - month
- 6.0% APY 21 - month

Unlike other CDs, the new Step-Up CD allows you to take advantage of increased interest rates after you open one. If interest rates take a leap, so can yours. Pick one time during the term to bump up your rate, and we'll jump to it. Member FDIC.

The APY (Annual Percentage Yield) is effective as of July 28, 1995 and is subject to change. \$500 minimum balance. Interest compounded quarterly. Substantial penalty for early withdrawal.

Manchester 428-8379



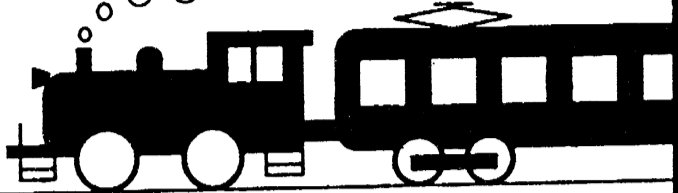
CLASSIFIED RATE:
\$3.50 for the first 20 words, 10c for each additional word.
Thank You's are \$5.00 for the first 50 words.
Ads must be prepaid unless arrangements are made with our accounting dept.
AD DEADLINE IS 5:00 FRIDAYS
428-8173

Ride the Rails



Special Scenic Train Rides

TEDDY BEAR PICNIC



Saturday, September 2

Leave Clinton at 11AM. Picnic in Hotrum Park in Tecumseh with a drawing for a Prize. Reservations are Required.

Bring your Bears!!

For Reservations & Schedule Information Call (517) 423-7230

CLINTON FOOT & ANKLE CLINIC
301 W. Michigan Ave. • Clinton, MI
517-456-4114

Offering complete foot and ankle care for the entire family.

-Specializing in-

- | | |
|--|---------------|
| Reconstructive Surgery | Laser Surgery |
| Sports Injury | Warts |
| Infant and Child Disorders | Ingrown Nails |
| Diabetic Care | Fungus |
| Foot and Ankle Injuries | Nerve Pain |
| Heel Pain | Skin Problems |
| Foot Pain | Bunions |
| Hammertoes | Calluses |
| Orthotics (Custom Casted Shoe Inserts) | |

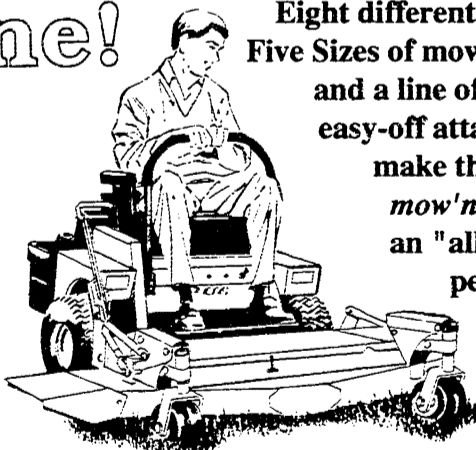
DAVID R. LEVITSKY, D.P.M.

Board Certified Surgeon
Member of: American Podiatric Medical Association
Michigan Podiatric Medical Association

Hours:
Wednesday/Fridays 10:00-5:00 p.m.
Saturdays 10:00-12:00

Please call for appointment-Most insurance accepted

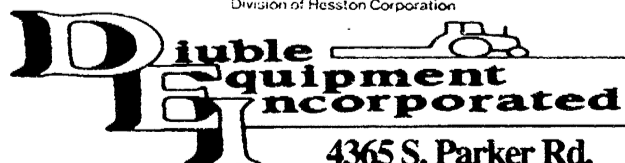
The Versatile One!



Eight different tractors, Five Sizes of mower decks and a line of easy-on, easy-off attachments make the Woods *mow'n machine* an "all-season" performer.

• True 360 zero turning • Finger-tip control of speed, direction and braking • Maneuverability that lets you trim as you mow • Convenient 'out-front' mowing

Woods *mow'n machine* ...



4365 S. Parker Rd.

Ann Arbor 994 - 1313

PARTS • SALES • SERVICE

New Back - to - School Hours:

Starting Aug. 28th : M & Th 3:30-8 pm Tues. & Wed. 10-1 & 2-8 Fri 10-1 & 2-6 pm Sat 8 am-Noon



TROPICAL EFFECTS

Tanning Salon

428 - 0504 20436 E. Austin Rd.

SPECIAL DRAWING:
Purchase membership in Sept. - Chance to win your membership FREE

Walk-ins Welcome

KINDNESS



For Obstetrics & Gynecology, P.C.

Total Healthcare for Women from Adolescence, through Childbirth, Menopause and beyond.

Sylvester OBI. Agomuoh, M.D.

- ♥ Normal and high risk obstetrics
- ♥ Adolescent gynecology
- ♥ Adult gynecology
- ♥ Geriatric gynecology
- ♥ Female disorders
- ♥ Pelvic surgery
- ♥ Laser laparoscopy
- ♥ Infertility
- ♥ Hysterectomy
- ♥ Pre-pregnancy counseling
- ♥ Pregnancy and delivery classes for couples
- ♥ Level II obstetrical ultrasound

A mission of Kindness, Love and Compassion



New patients being accepted.

Call for appointment (Mon-Fri 9 am - 5 pm)
INDIAN BEND HEALTH COMPLEX

6869 Occidental Hwy., Tecumseh (517) 423-2102

Also in Clinton - 112 W. Michigan Ave.

Mondays 4 - 7 pm Wednesdays 1-5pm
(517) 456-4176

PINE VIEW FARMS

10998 Hardcastle • Brooklyn
9 to 6 Tuesday - Sunday
(Closed Monday)

592-3892

Evergreens • Shade Trees
Flowering Trees • Shrubs
Unique Accent Plants

WACKER'S GENERAL STORE

Corner of M-52 & Pleasant Lake Rd.

Summer Hours:

Mon-Sat 7:00am-9pm
Sun 8am-9pm



HOMEMADE ICE CREAM
Regularly \$3.99

ON SPECIAL
\$2.99
Half Gallon Sizes
8/26 - 9/3

Lots of Flavors to choose from
Including New :
No Sugar added -
Reduced Fat
Ice Cream

Buy your tires now to qualify for the 1995 "Big Buck" contest!

DAN'S WESTSIDE AUTOMOTIVE

Your Complete Auto Repair Shop

660 West Main Mon-Fri 8 - 6 Sat 9 - 2

428 - 9455

GET \$5.00 OFF YOUR NEXT OIL CHANGE.



TWIST AND SHOUT
SCRATCH & WIN SWEEPSTAKES

Win a 1996 Pontiac Grand Prix...

Dan's Westside

\$1,000 Cash...or one of thousands of other prizes

660 W. Main 428-9455

Coupon good thru 9/15/95

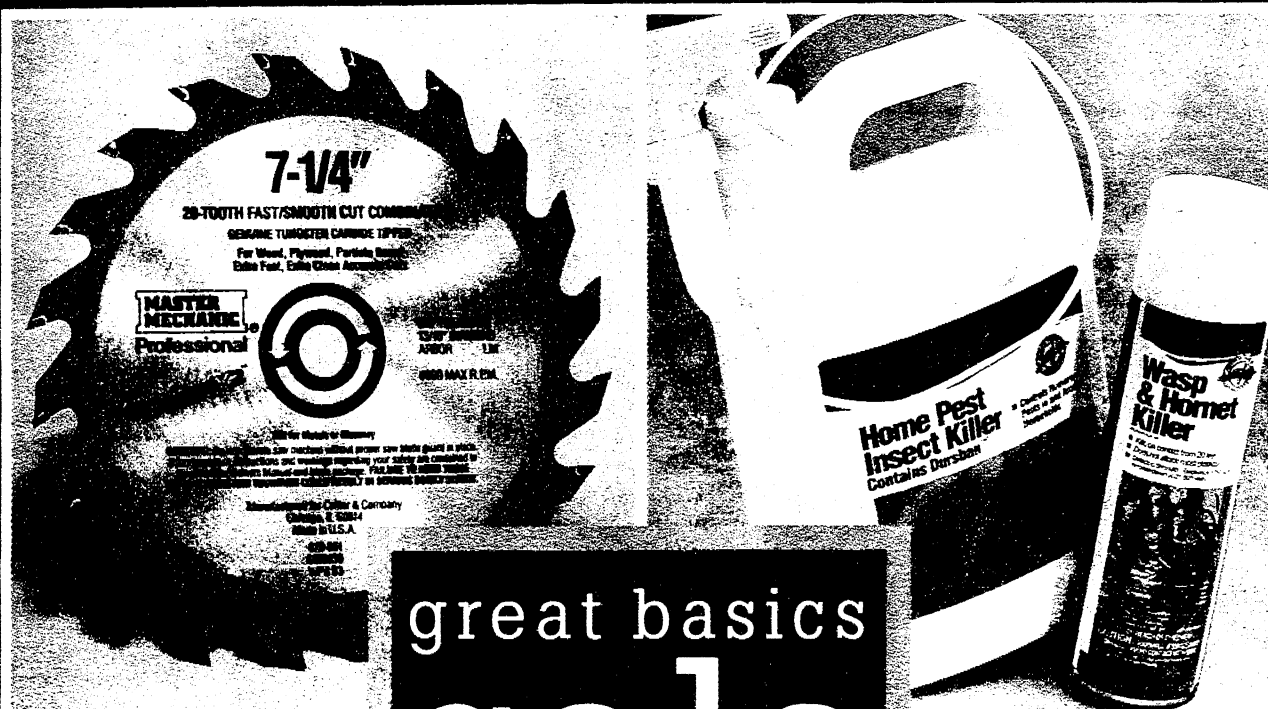
True Value®

Help Is Just Around The Corner™

BARGAIN OF
THE MONTH
**7 1/4" Circular
Saw Blade**

4⁹⁹

Tungsten carbide tips for
longer life. 20 razor-sharp
teeth give you precise
cuts. 1706930 3 320 661 11



great basics
sale

BARGAIN OF
THE MONTH
**18" Under-
Cabinet Light**

4⁸⁸

**Lowest Price
of the Year**

Energy efficient light
brightens dark spaces.
Fully assembled, with
15W light, 5' cord.



**Home Pest
Insect Killer**

4⁹⁹

This ready-to-use bug
killer includes a sprayer.
Gallon. 41707 1 196 643 12

**Wasp &
Hornet Killer**

1⁹⁹

Allows you to reach nests
18-25' above ground. 15
OZ. 44107 1 196 692 112

**43-Piece
Tool Kit**

8⁹⁹

This handy zippered kit
includes Phillips and
Torx® screwdriver bits,
standard & metric
sockets, hex keys and
more! 15 327 196 24

GreenThumb[®]



9⁹⁹

60' All Seasons Hose has a 5/8" I.D. hose that's nylon reinforced for long life. Mfr.'s 5-year guarantee. L 156 299 F5

Weed Eater[®] budget beaters.

69⁹⁹

A) **Feather Lite 16" Gas Trimmer** starts quickly and easily; operates with reduced noise and vibration. XT25T L 492 556 1

89⁹⁹

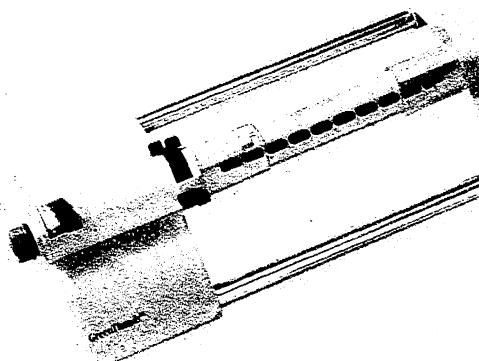
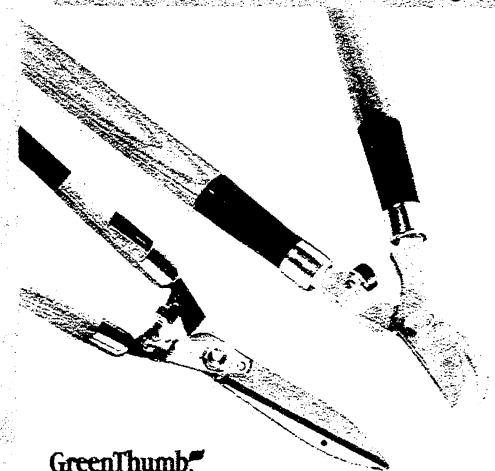
B) **Gas Blower With Accessories** has a powerful 22cc engine and an anti-vibration handle. Weighs just 11 lbs. 68120 L 687 616 1

149⁹⁹

C) **16" Chain Saw** has a powerful 2.1-cubic inch engine. Includes engine and bar and chain oils. 2150-16 L 358 283 1



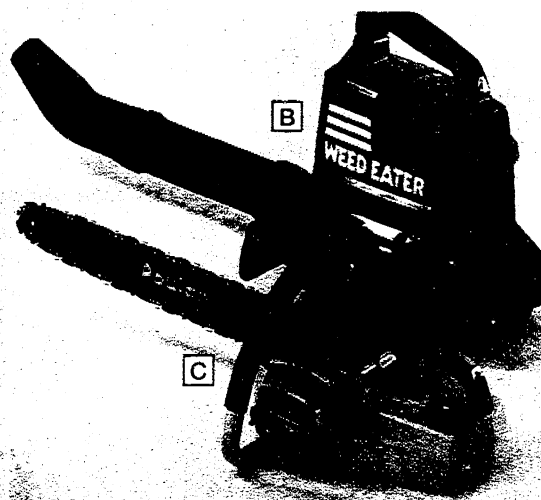
Your choice
10⁹⁹
**Shovel, Rake
or Hoe** feature
non-slip grips for
better control.
L 139 568/138 693/750
TRUE TEMPER



GreenThumb[®]

16⁹⁹

NEW Oscillating Sprinkler with automatic adjustment width and flow control. Impact resistant. 3600FW L 476 336 6



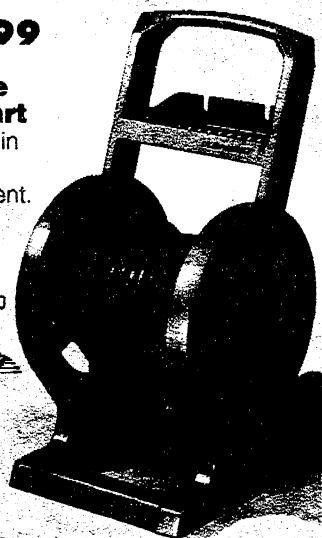
GreenThumb[®]

15⁸⁸

Your choice
Hedge Shears or Lopper.
Backyard basics at a low price.
L 403 832/759 027 6

29⁹⁹

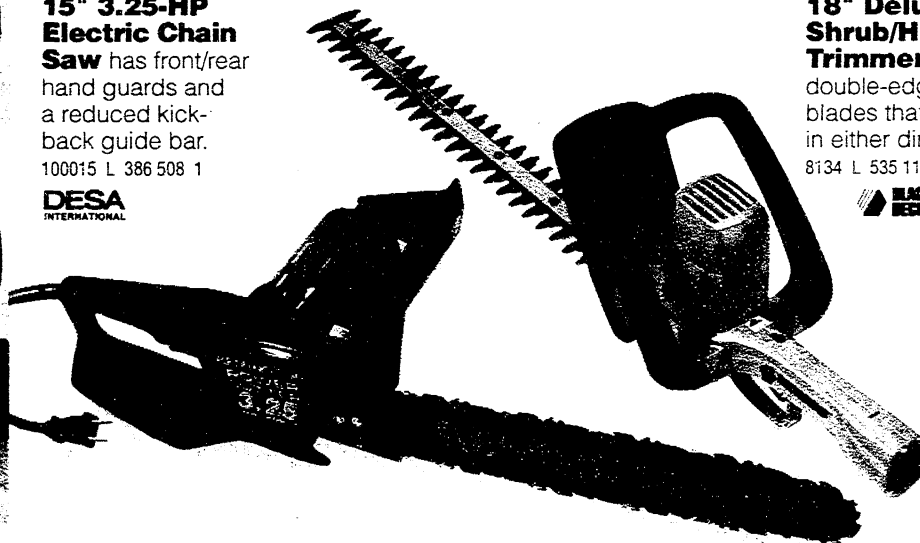
Graphite Hose Cart has a built-in storage compartment. Holds 225' of 5/8" I.D. hose (sold sep.). GLR200 L 256 393 1



54⁹⁹

15" 3.25-HP Electric Chain Saw has front/rear hand guards and a reduced kick-back guide bar. 100015 L 386 508 1

DESA
INTERNATIONAL



34⁹⁹

18" Deluxe Shrub/Hedge Trimmer has double-edge blades that cut in either direction. 8134 L 535 112 1

BLACK
BECKER



18⁹⁹

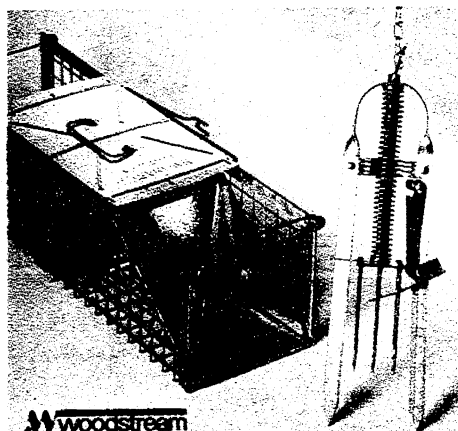
Electronic Water Timer.

5400 L 476 272 6

3⁹⁹

4-Pattern Spray Nozzle.

5866T L 534 933 10



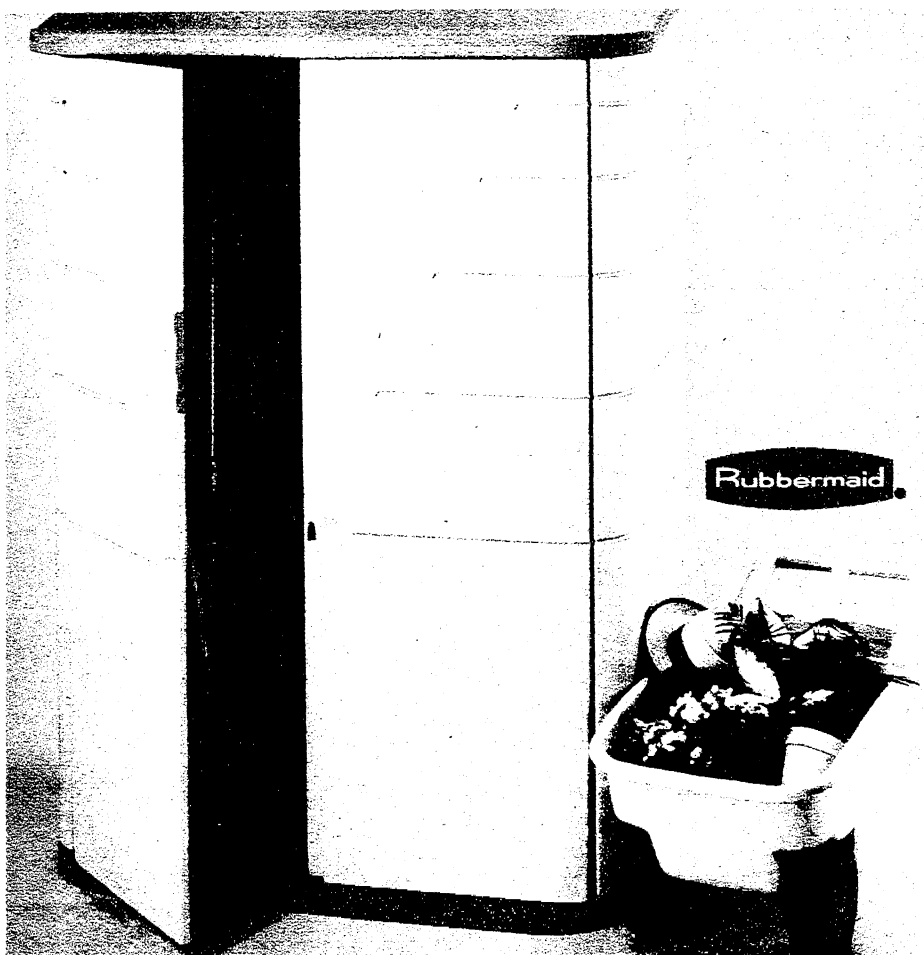
Woodstream

8⁹⁹-24⁹⁹

Mole Plunger for Eastern moles.

With safety. **8.99** 0645 S 287 144 6

Havahart Trap. **24.99** S 202 879 1



249⁹⁹

Vertical Shed measures 4W x 2 $\frac{1}{2}$ D x 6'H. Won't rust. 3746 L 484 292 1

Horizontal Shed (not shown) measures 5W x 2 $\frac{1}{2}$ D x 4'H. **189.99** 3745 L 261 217 1

26⁹⁹

Easy Rider Lawn Cart makes heavy work in the yard easy! Made of sturdy one-piece molded plastic. Fully assembled. 3701-14 L 246 846 14



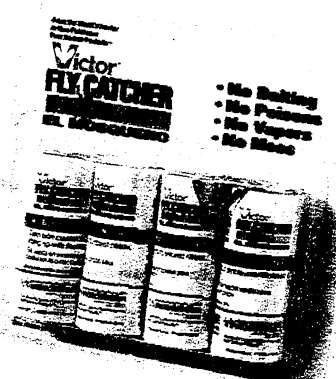
Your choice
3⁹⁹

Ant Stop kills indoor pests. 16 oz. 1136 L 288 407 F12
Raid House & Garden 11-ounce 144 006 F12

2⁹⁹

Crawling Bug Killer kills on contact. 16 ounces.

1493 695 F12
I-CON



Woodstream

99¢

4-Pack Fly Catcher Ribbon

has no poison, no vapors and no mess.

Just hang it anywhere! M510 L 197 056 F24



Rubbermaid

2⁹⁹

2-Gallon Watering Can is perfect for watering your flower beds and newly planted veggies. 3147 L 256 294 F6

SUREFIRE



4⁹⁹

Yellow Jacket/Wasp Trap is ideal for summer! Bugs fly in, but don't fly out! Reusable! 0006 L 115 125 1



Burgess

Your choice

49⁹⁹

Electric or Propane Foggers make sure your next cookout or get-together is totally bug free! For use with either wet or dry fog. 960/1443 L 144 766/148 346 3

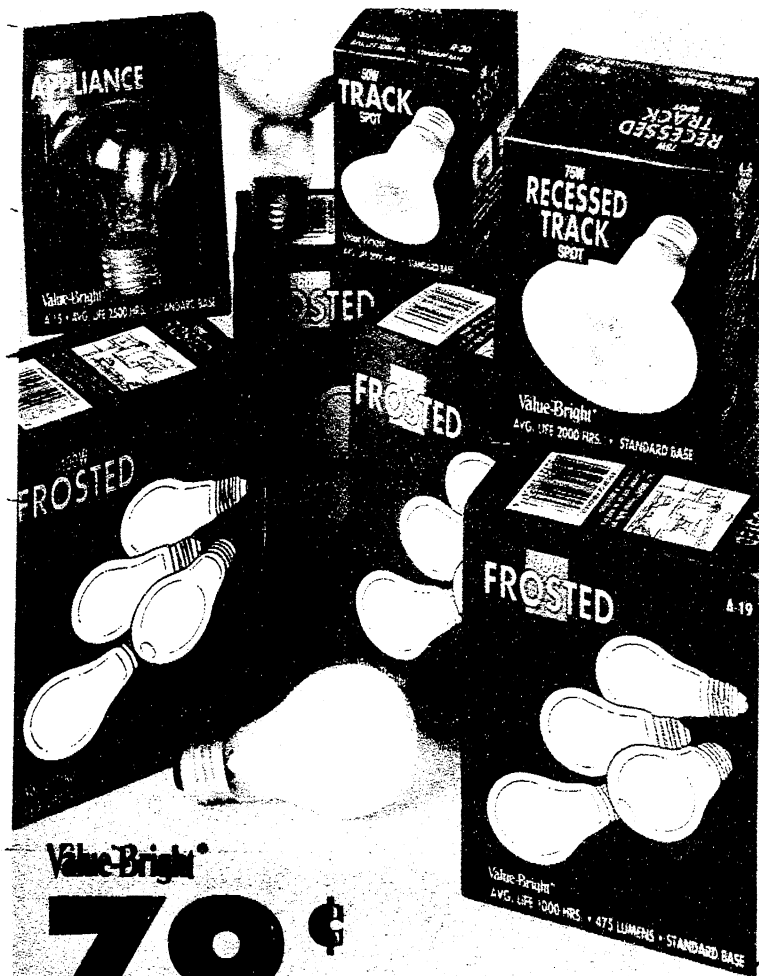
Insect Fog (not shown) has superior kill power. Gallon. **14.99** F100-1 L 447 359 6



19⁹⁹

Step-2[®] Grasshopper is a comfortable, contoured seat on wheels. Has storage compartment. 5400 L 283 286 1

True Value.



Value-Bright®
79¢

40-Watt Clear Appliance Lamp lets you see what's cookin'! Ideal for stove, refrigerators and microwaves! E 102 806 F6
50-Watt Reflector Flood Lamp. 1.49 E 410 027 F6
75-Watt Reflector Flood Lamp. 1.79 E 410 357 F6
4-Pack Frosted Lamps give off a warm glow. Available in 40-, 60-, 75- or 100-watts. **99¢ each** E 118-866/874/896/904 F30

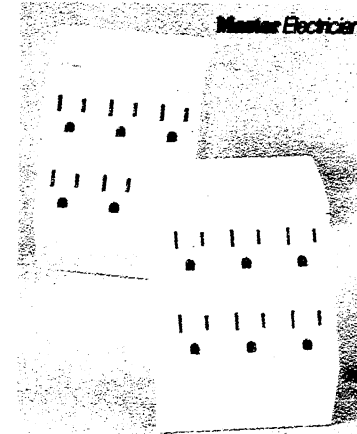
Master Electrician®

7.99

6-Outlet Surge Strip has a \$250 connected equipment warranty. ME-EP6SP E 359 805 12
Side Entry Tap W/Modem (not shown). \$1,000 connected equipment warranty. **17.99** E 359 882 10



99¢ Each
9' 3-Outlet Extension Cords are available in either white or brown. E 394 536/239 425 25

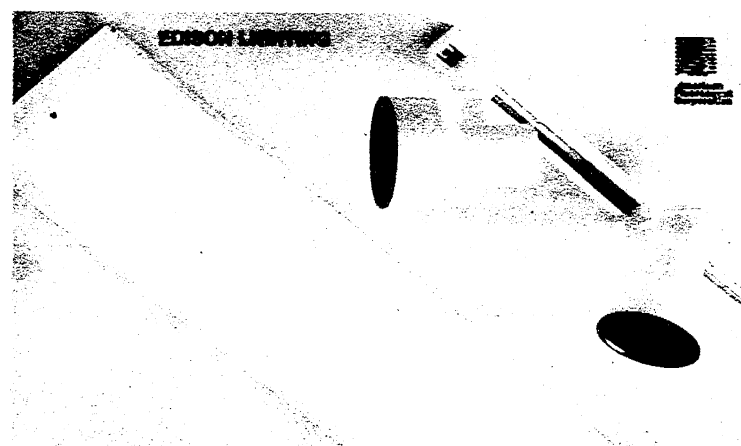


1.99
Your choice 3-Wire Grounding Tap has six outlets for maximum power! Ivory or white. E 283 930/379 651 19



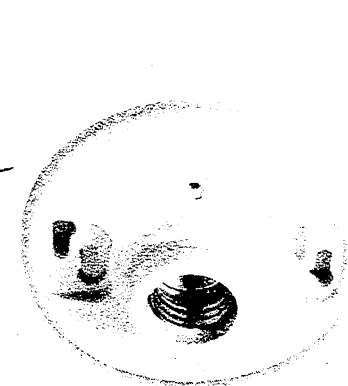
THOMAS
POWER-TEC
9.99

4-Light Bath Bracket in polished brass, antique brass or chrome finish. Uses four 100-watt bulbs (sold separately). E 262 243/792 416/383 919 6



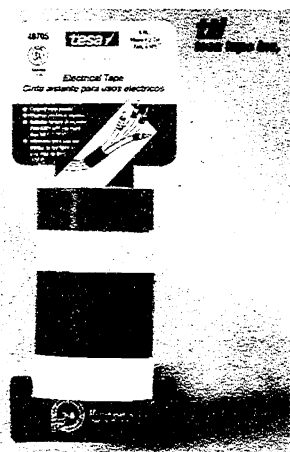
19.99
48" 2-Light Fluorescent Wrap-Around Fixture is ideal for the basement. E 395 947 1

24.99
2-Light Track Kit lets you light up any area of the home. Includes hardware. E 133 915 6

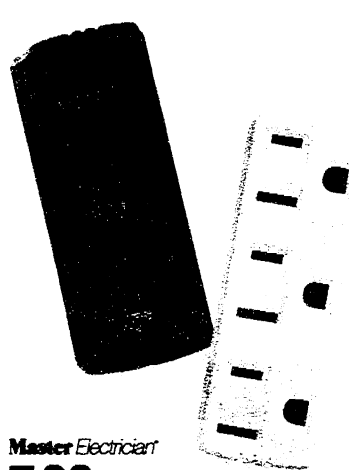


Master Electrician®

89¢
250W Keyless Porcelain Lampholder is an electrical basic at a hot price. E 244 657 50

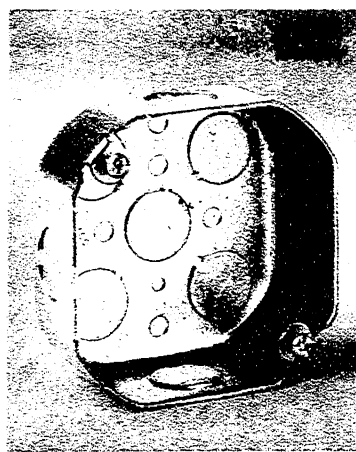


1.99
NEW 5-Pack Electrical Marking Tape comes in five distinct colors. 40705 E 606 803 18

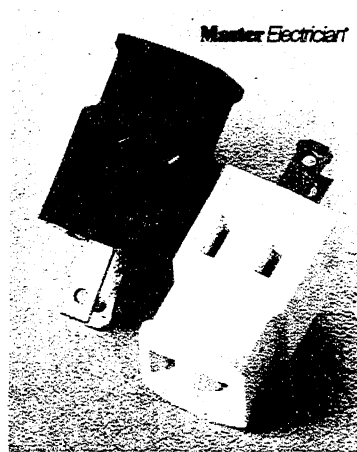


Master Electrician®

1.99
Each 15-Amp. Grounding Triple Tap is available in your choice of brown or ivory. E 245 597/252 502 F10

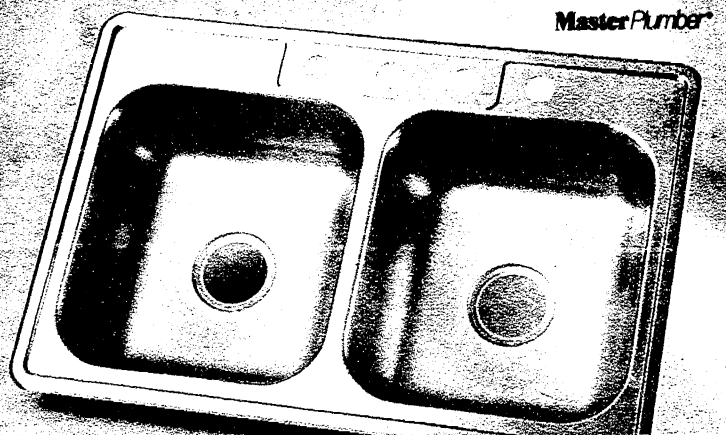


56¢
Steel Octagon Box is a home re-wiring basic. Has 9, 1/2" knockouts. 8125 E 243 105 50



69¢
Each Polarized Brown or White Vinyl Cube Taps add needed outlets. E 245 571/316 F10

MasterPlumber®

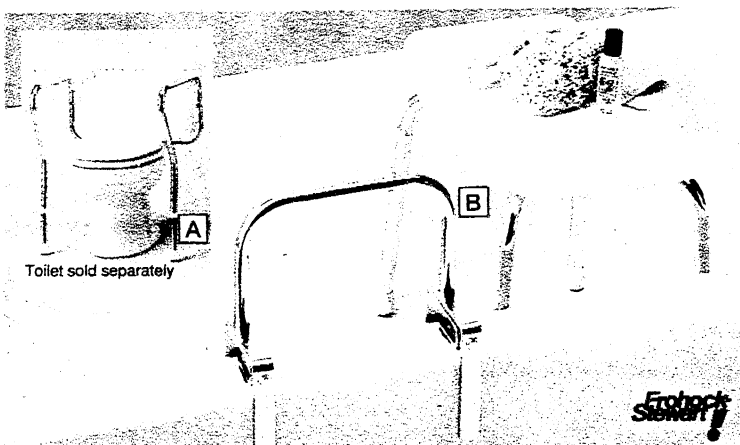


34⁸⁸

33x22x6" Double-Bowl Stainless Steel Kitchen Sink

is ideal for that remodeling job you have in mind. MPE33224 F 481 575 1

33x22x7" Kitchen Sink (not shown). **49.88** MPB33224 F 481 625 1



Toilet sold separately

Easy to
Install!

34⁸⁸

A) Adjustable Toilet Safety Guard Rail.

Chrome plated; adjustable legs. F 748 665 3

24⁸⁸

Your choice B) Bathtub Grip or Safety Bench

are safety devices for the tub! 100/50 F 404 152/228 6

19⁹⁹

Single-Bowl Laundry Tub

includes all the hardware: (faucet sold sep.). PT-1 F 527 314 1

15⁸⁸

5" Elevated Toilet Seat

has a contoured seat and deep-flair splash guards. 685 F 748 673 4

Elyer
Capture the Elegance



62³²

For Both

Vitreous China Toilet Bowl And Tank is the perfect way to add a bit of pizzazz to the bathroom! White. Seat sold

separately. 131-1120-00/141-0120-00. F 279 557/706 1

Wood Toilet Seat fits regular bowls; white. **8.66** F 488 543 6



16⁸⁸

3/4" Whole House Water Filtration System includes everything you need. F 852 541 6

28⁸⁸

3/8" Under-Sink Water Filtration System for clean, clear water. 1498828 F 852 566 6

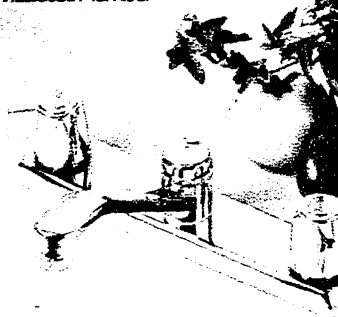


MasterPlumber®

38⁸⁸

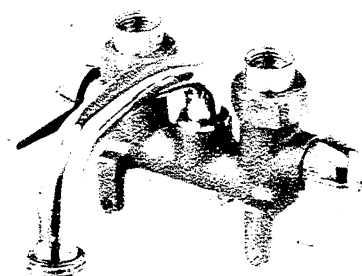
1/3-HP Food Disposer with aluminum grind chamber. F 687 475 1
1/2-HP. 59.88 F 687 491 1

MasterPlumber®



29⁸⁸

2-Handle Kitchen Faucet without spray. F 126 147 6
With Spray. 38.99 F 126 154 6

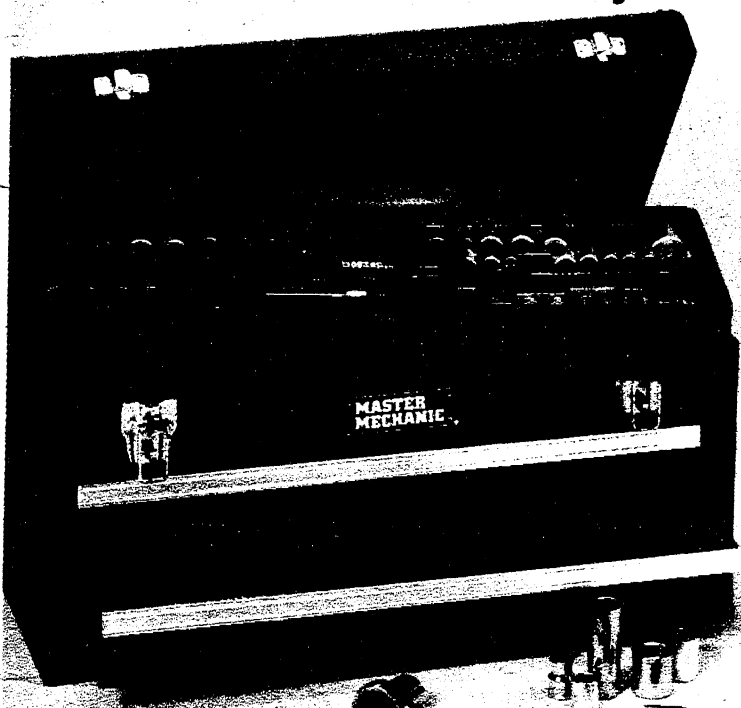


19⁹⁹

Laundry Tub Faucet is made of rough brass. Threaded 1/2" connectors. 125001 F 150 847 24

True Value.

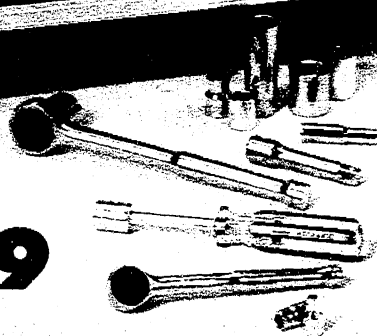
Storage solutions, **True Value**® style!



Master Mechanic®

79⁹⁹

2-Drawer Portable Storage Chest With 60-Piece Tool Set is a sturdy steel storage chest that also includes a 1/4" and 3/8" drive fractional and metric tool set. MM1802TS R 306 222 1

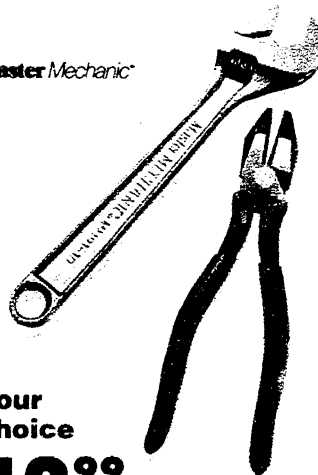


Master Mechanic®

14⁹⁹

Professional 16-Ounce Curved Claw Hammer with leather grip. MM16C R 100 636 4

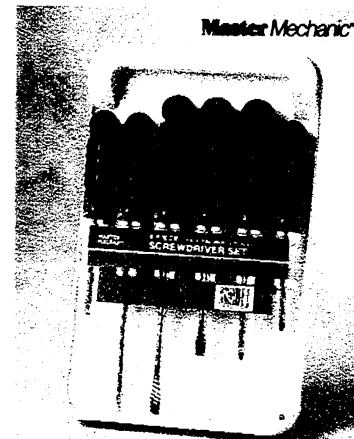
Master Mechanic®



Your choice

12⁹⁹

10" Adjustable Wrench or 8" Cutting Lineman's Pliers. R 296 996/181 214 6



Master Mechanic®

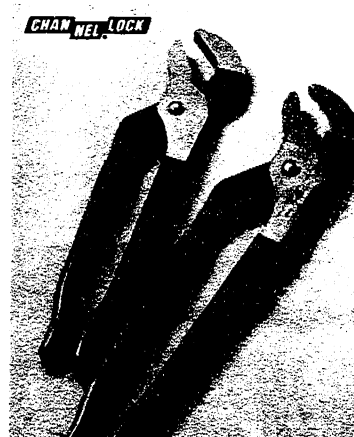
6⁹⁹

6-Piece Screwdriver Set features steel, nickel-plated screwdrivers. MMT6 R 457 077 12



9⁹⁹

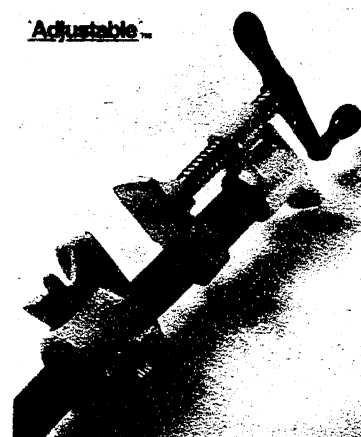
Stud Sensor finds studs, not nails! Is fully automatic and has two LED lights. MM53213 R 298 403 8



CHANNELOCK

8⁸⁸

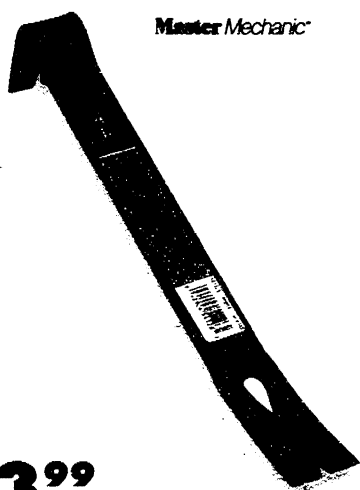
Your choice
10" Channellock Pliers or 12" Curved-Jaw Pliers. 430/442 R 107 185/741 074 5



Adjustable

9⁹⁹

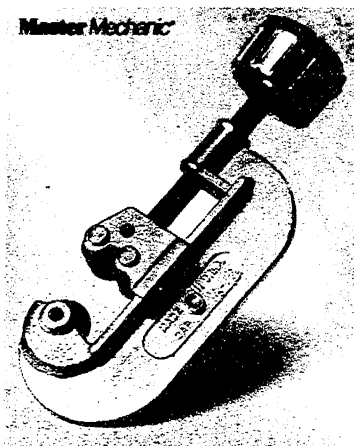
Pony Bar Clamp is a basic for wood and metal working. For use with 3/4" pipes. 50 R 103 994 6



Master Mechanic®

3⁹⁹

14" Multi Bar can be used for prying, scraping, nail pulling, and more! Steel. MMB14 R 541 268 F6

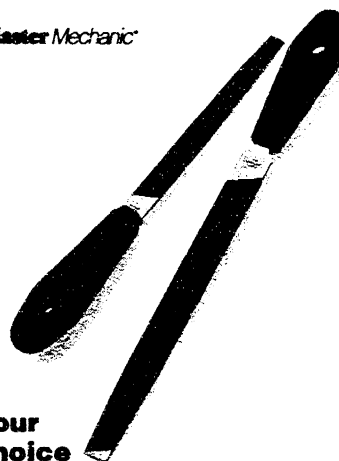


Master Mechanic®

4⁹⁹

Economy Tube Cutter for cutting copper, brass, aluminum tubing. MM35275 R 428 052 12

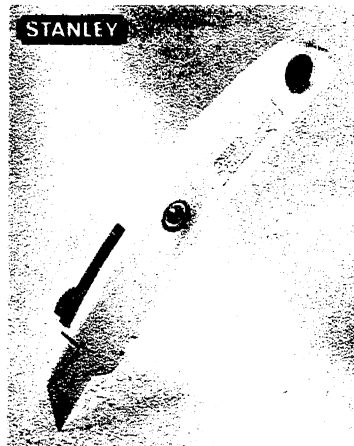
Master Mechanic®



Your choice

2⁹⁹

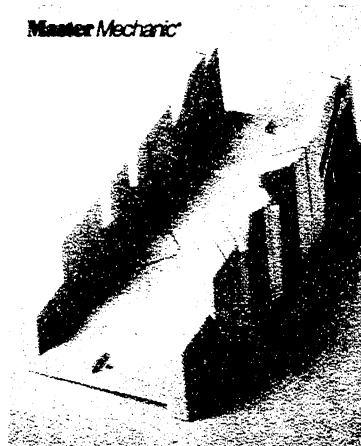
NEW 6" or 8" Mill Bastard File smooths out the rough edges. MM21685/92 R 362 514/522



STANLEY

4⁹⁹

Retractable Utility Knife with 3 blades. 10-989 R 247 067 6
100 Blades. 9.99 R 129 668 1

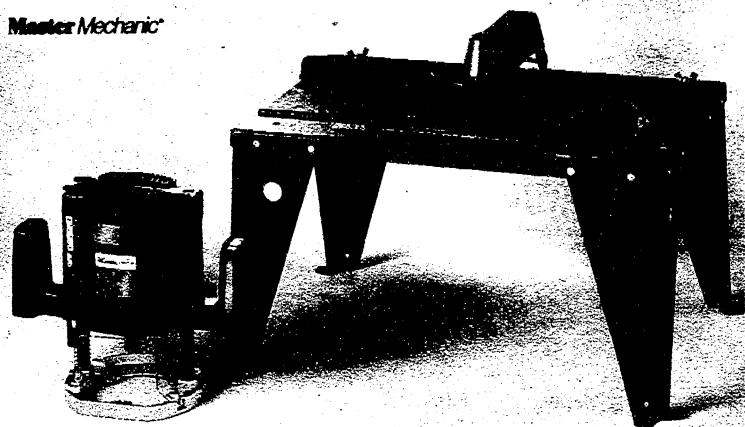


Master Mechanic®

3⁴⁹

Economy Plastic Mitre Box measures 11 1/2" with 45° angle cuts. MM3608 R 451 427 12

Master Mechanic



29⁹⁹ - 69⁹⁹

Plunge Router has a 1½-HP motor. **69.99** MM8510 J 364 992 1
Steel Router/Table Saw Table. **29.99** MM3466 J 102 403 1
6-Piece Magnetic Screwdrivers (not shown). **6.99** J 442 392 4



BLACK & DECKER

79⁹⁹

Workmate™ 350 is your ultimate work station. Supports up to 350 pounds. 79-038 J 102 213 1

**Put more power
in your shop!**

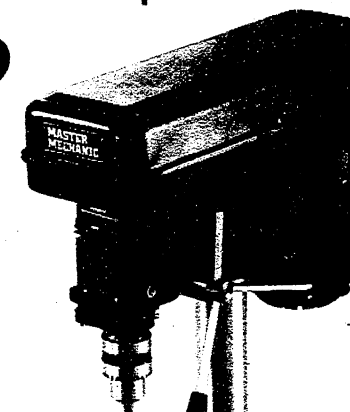
99⁹⁹

8¼" Compound Miter Saw has a 9-amp motor and an electric brake.

MM8325A J 102 533 1

5-Speed Bench Drill Press with 1/4-HP induction motor. Table tilts 45°. **109.99**

MM8050 J 433 615 1



Makita

44⁹⁹

3/8" Cordless Drill is light-weight and powerful! Reversible, 450 rpm. 6041DW J 291 039 1



Master Mechanic

29⁹⁹

3/8" Variable-Speed Reversing Drill supplies up to 2,500 rpm. MM8560 J 571 752 5

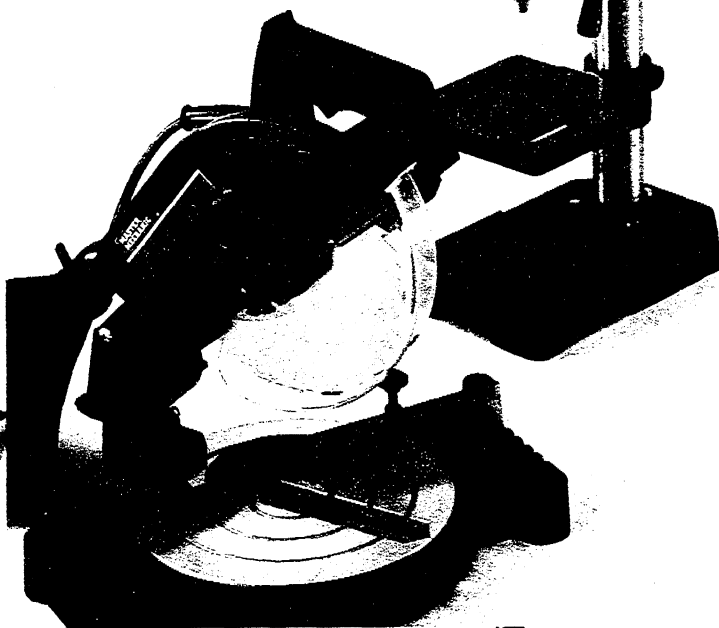


DEWALT

144⁹⁹

Heavy-Duty, Variable-Speed Reciprocating Saw Kit.

DW305K J 472 183 1



DELTA

DELTA

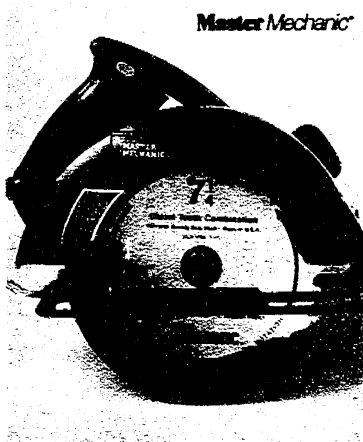
144⁹⁹

Bench Band Saw has a 1/5-HP motor and an 11½" tilting aluminum table. 28-180 J 102 225 1



84⁹⁹

5" Random Orbit Sander has a canister for dust collection. 12,000 opm. 333 J 349 707 1



Master Mechanic

39⁹⁹

7¼" Circular Saw has a 2-HP motor, textured front/rear handles, built-in scales. MM8550 J 571 745 1

DEWALT

59⁹⁹

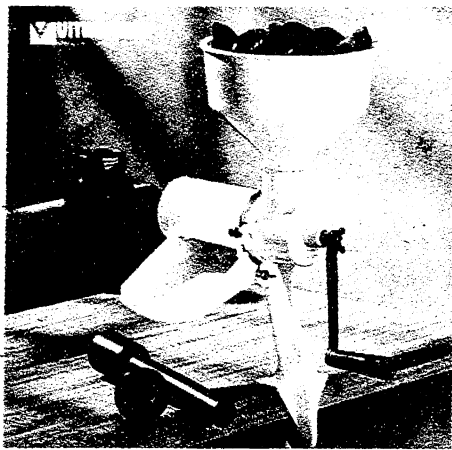
3/8" Heavy-Duty Variable-Speed Drill is reversible. Has built-in 2-way level. DW101 J 468 900 1



54⁹⁹

8-Gallon Power Plus Wet/Dry Vac with accessories and bonus tools. J 781 351 1

True Value.



29⁹⁹

Canning and Food Strainer

separates juices and pulp from the skin and seeds without peeling. 200 W 806 240 6



12⁹⁹

2-Qt. Food Mill is a masher, ricer and strainer. Easy to use! 0101007 W 519 584 6
3½-Qt. (not shown). 16.99 W 519 655 3

12⁹⁹

Apple Parer/Corer slices and cores an apple in one operation—in just seconds!

GAPC-240 W 650 622 6

PROGRESSIVE INTERNATIONAL CORP.



Ball

Kerr

100% Fruit Pectin. 1% oz. **1.29** 51 W 264 473 48
12-Pack Pint Jars. Regular. **4.99** 61 W 501 163 1
12-Pack Quart Jars. Regular. **5.99** 62 W 501 171 1
12-Pack Pint Jars. Wide mouth. **6.29** W 501 189 1
12-Pack Quart Jars. Wide mouth. **7.29** W 501 197 1
12-Pack Regular Caps. **1.89** 30 W 117 770 24
12-Pack Dome Lids. **79¢** 31 W 117 788 60
12-Pack Caps. Wide mouth. **2.69** 40 W 117 796 12
12-Pack Lids. Wide dome. **1.29** 42 W 125 351 36
12-Pack Jelly Glasses. **5.99** 81200 W 501 114 6



16⁹⁹

10 & 12" Saute Pan Set features a convenient nonstick interior coating and wood handles. M1700-24 W 404 012 6



9⁹⁹

5-Piece Stainless Steel Mixing Bowl Set includes 3/4, 1, 2, 4 and 8-quart sizes. 1063 W 576 801 6



10⁹⁹

21½-Quart Graniteware™ II Cold Pack Canner holds 7 quart size jars (sold sep.). Includes rack. 0707 W 299 644 F3



69⁹⁹

17-Quart Pressure Cooker/Canner includes a cooking/canning rack and an instruction/recipe book. 01750 W 294 660 1

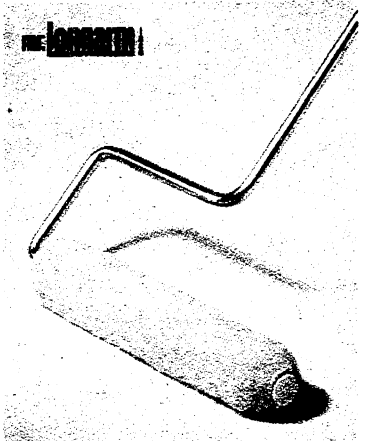


MIRRO

54⁹⁹

12-Quart Pressure Cooker/Canner with removable gasket. M-0512 W 283 523 1
22-Quart (not shown). 69.99 W 295 915 1

Celebrate the Tru-Test® Great Basics Paint Sale!



4⁹⁹
**1/2" Nap Long Slim
 Roller Frame With Cover.**
 9381 K 164 332 6



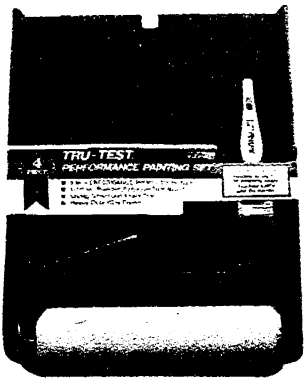
2⁴⁹ Each
Texturing Additive in your
 choice of fine, medium or coarse.
 1 pound. T1/2/3 P 327 825/841/932 12



9⁹⁹
**Brite White Latex Ceiling
 Paint** with a non-spatter
 formula. Gallon. CBW K 319 913 F4



8⁹⁹
**BETTER QUALITY
 Easy Color™ Interior Flat Latex Wall
 Paint** is a quick-drying, non-spatter
 formula. Looks beautiful for years! Gallon. JF1 K 258 577 F4



\$5
4-Piece Performance Set
 with 9" roller cover, wire frame,
 brush and tray. RKP-400 K 207 555 12



FOREMOST
4⁹⁹
Disposable Coverall keeps
 the stains away! Assorted sizes.
 DCM/LX P 518 118/517 797/358 272 24

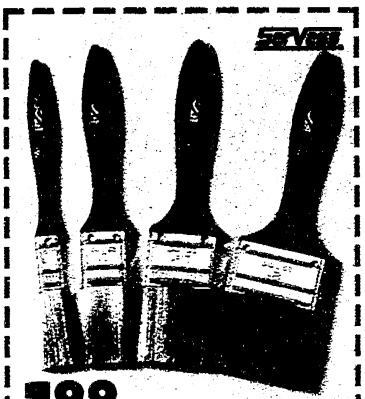


HIDE TOOLS
3⁹⁹
**6 x 6" Self-Adhesive
 Drywall Patch** is fiberglass
 reinforced. 09899 P 319 988 10

10⁹⁹
**BETTER QUALITY Easy
 Color™ Interior Satin Latex
 Wall Paint** offers a scrubbable,
 high-hiding finish. Spatter-resistant
 formula. Gallon. JSE1 K 258 676 F4

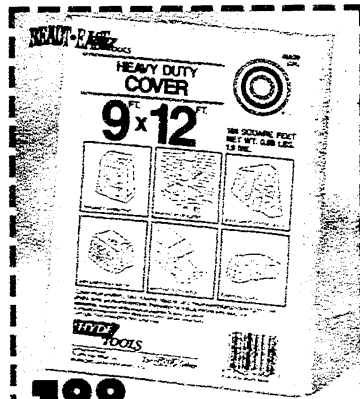


Tru Test
 takes the
 guesswork
 out of
 matching
 paint colors!
 Just bring
 any color
 sample—
 from fabric
 to a paint
 chip—to any
 of the 1,000
 True Value
 stores with
 the Tru-Test
 Color
 Computer
 Matching
 System
 You'll get a
 precise
 computer
 color match
 and there's
 no charge
 for custom
 color tinting.



1⁹⁹
 with coupon
**4-Piece Bag-O-
 Brushes** 0005 K 211 912 12
 See back cover for coupon expiration date.
 LIMIT: 1 item per coupon. While quantities last. DM 68

True Value



1⁹⁹
 with coupon
**9 x 12' Plastic Drop
 Cloth** 250 P 221 614 12
 See back cover for coupon expiration date.
 LIMIT: 3 items per coupon. While quantities last. DM 68

True Value



1⁹⁹
 with coupon
3" Mohair Roll-It Set
 03000 P 213 439 10
 See back cover for coupon expiration date.
 LIMIT: 3 items per coupon. While quantities last. DM 68

True Value



**Each
 99¢**
 with coupon
**Gloss Spray Enamel—
 Black or White**
 SVS2/SVS1 K 527 770/762 F6
 See back cover for coupon expiration date.
 LIMIT: 2 items per coupon. While quantities last. DM 68

True Value

Spray paint not sold in the city of Chicago and may be prohibited or restricted by other state and local laws.

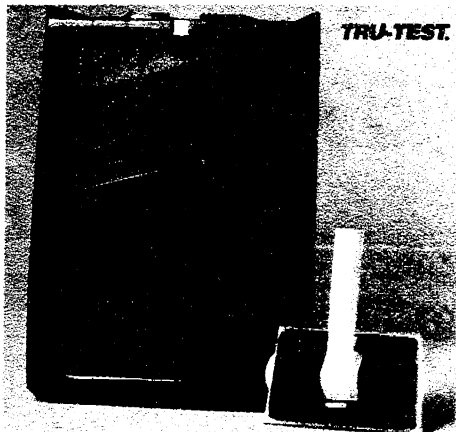


3/\$1 with coupon
**2" Poly Foam
 Paintbrush** P 397 158 F48
 Expiration date posted in store.
 LIMIT: 6 items per coupon. While quantities last. DM 68

True Value

True Value.

Tru-Test understands the meaning of **Value!**



TRU-TEST.

1.79
**9" Heavy Duty
 Paint Tray.**
 PRT-90 K 670 265 F12

3.99
**6" Interior
 Paint Pad.**
 INTP K 330 426 6



LEGGET & PLATT
8.88

5-Pound Box of Painters' Rags
 are great for cleanups when you're painting! White knit cotton. 6414-5 P 320 082 1



TRU-TEST.
 QUALITY PAINTS
VALUE
 INTERIOR
**PVA-LATEX
 Drywall
 Primer**
 WARNING! DO NOT SWALLOW
 PVA-1 White

\$7

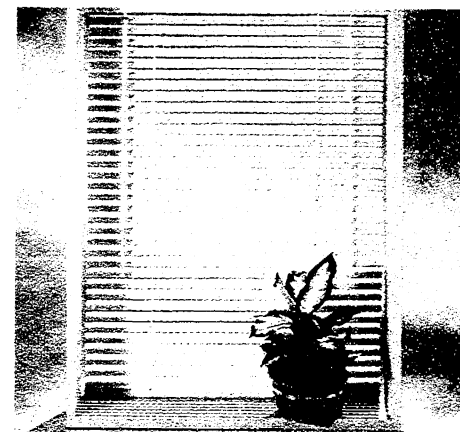
Each

**GOOD-QUALITY Value Latex Flat
 Wall Paint or Drywall Primer** both
 help make your home beautiful again. They go
 on easy with great results! Gallon. VF11/PVA1
 K 353 862/133 843 F4

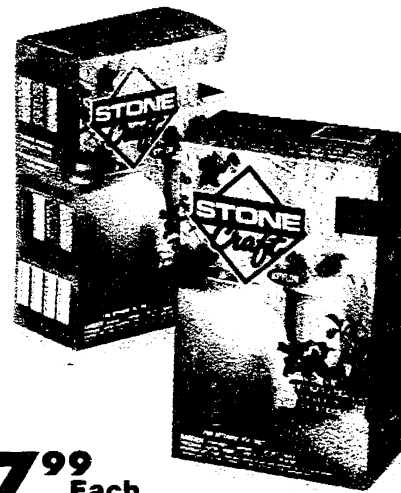


TRU-TEST.
 QUALITY PAINTS
VALUE
 INTERIOR
**HIGH-HIDING
 Latex Flat
 Wall Paint**
 VF-11 White

Available
 ONE GALLON
600
 colors



JENCRAFT
As Low As 2.99
23 x 64" Mini Blinds keep out the
 summer sun and look sensational!
 Assorted colors & sizes. VC2364Z P 493 346 6



7.99 Each
**White Marble or Black Granite
 Decorative Paint Kits** give your
 walls an exotic look. 8231/8201 P 530 139/148 166 3



8.99
**Your choice
 Satin or Semi-Gloss
 Polyurethane Finish.** Fast drying.
 Quart. 63010/70016 P 221 838/289 165 6



TRU-TEST.
5.99
**Enrich Satin Poly-
 urethane Varnish.**
 Quart. 039 K 372 490 4

2.29
**Hi-Q™ Gloss Spray
 Enamel** in over 40
 colors. U1 K 203 984 F6
 Spray paint not sold in the city of Chicago and may be
 prohibited or restricted by other state and local laws.

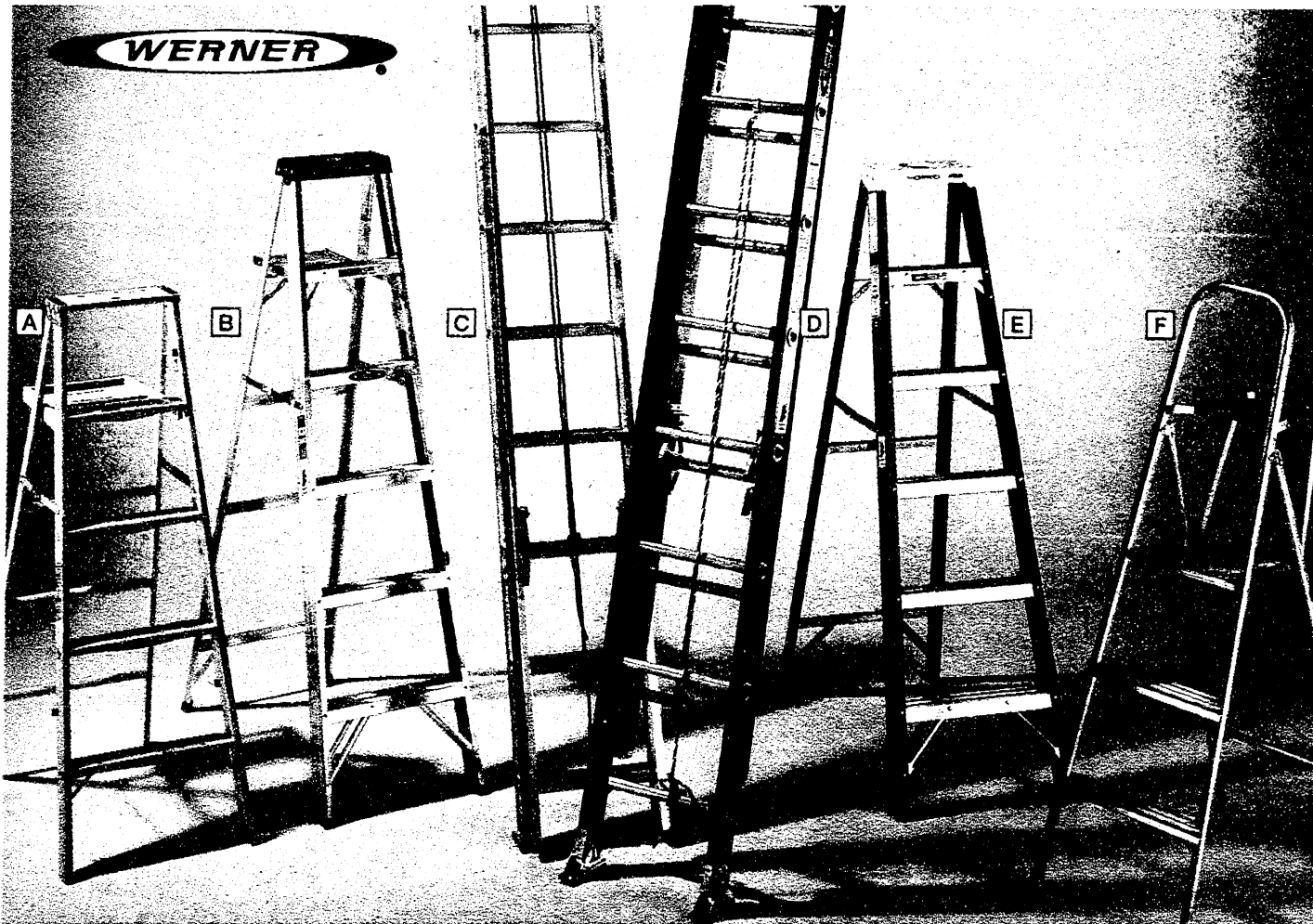


9.99
Kilz Primer/Sealer
 kills and covers stains on
 walls. Gallon. 10006 P 629 493 F2



1.29
5-Quart Plastic Paint Pail
 makes it easy to carry paint from
 room to room. 50 P 201 889 F24

Come in to True Value® and *step up to savings!*



Protect your *driveway* the right way!



9⁹⁹

Blacktop Driveway Coating creates a gas, oil, and stain-resistant surface. 5 gallons. 0535 P 676 676 1

34⁹⁹

A) 5' Wood Stepladder. 225-lb. duty rating. W365 P 169 912 1

34⁹⁹

B) 6' Household Aluminum Stepladder has a 200-lb. duty rating. 356 P 190 256 1

89⁹⁹

C) 20' Flat-Step Aluminum Extension Ladder. 200-lb. duty rating. P 171 702 1

149⁹⁹

D) 16' Fiberglass Extension Ladder is Twist-Proof®; 250-lb. rating. D6016-2 P 462 200 1

59⁹⁹

E) 6' Fiberglass Stepladder. Rugged, with a 250-lb. duty rating. 6006 P 708 453 1

59⁹⁹

F) 5' Aluminum Platform Ladder has a 200-lb. duty rating. 265 P 179 556 1

79^c

Latex Caulk easily fills cracks around windows and doors. It's paintable, too! White. 10.3 oz. 18250 P 740 290 F10



1²⁹

Latex Silicone Caulking Compound. 10.1 oz. White. 18101 P 205 740 F10

3⁴⁹

Polycel® Insulating Sealant fills

cracks and gaps better than caulk, plus it won't shrink or dry out. 12 oz. (Not for sale in Vermont). 83394 P 510 271 F12



2²⁹ Your final cost 1.29 after \$1 mail-in rebate

Clear or White Silicone Sealant. TB012/112 P 183 715/184 093 F12

True Value.

Tru-Test® asks you to **compare and save!**

Tru-Test takes the guesswork out of matching paint colors! Just bring any color sample—from fabric to a paint chip—to any of the 1,000 True Value stores with the Tru-Test Color Computer Matching System. You'll get a precise computer color match and there's no charge for custom color tinting.



9⁹⁹

BETTER QUALITY Easy Color™ Flat Latex Exterior House Paint goes on easy and gives you a fade-resistant finish that lasts for years!
Gallon. JEF9 K 299 456 F4

13⁹⁹

PREMIUM QUALITY WeatherAll® Acrylic Latex House Paint stands up to the very harshest weather! It even resists mildew and fading. Gallon. HPX9 K 351 643 F4

1⁹⁹

Siliconized Acrylic Latex Caulk is available in white, brown and clear. 10.5 oz. \$56/59/60-CLK K 591 230/248/305 F12



COMPARE & SAVE



8⁹⁹

Thompson's Water Seal. Gallon. 10101/15101 P 292 722/667 683 F4
VOC. Gallon. 12.99 P 644 153 4

7⁹⁹

Clear Waterproofing Sealer. Gallon. CS1 K 527 747 F4
VOC. Gallon. 9.99 K 164 806 F4



14⁹⁹

PREMIUM QUALITY Semi-Transparent Oil Deck Stain. Gallon. K 182 744 F2



13⁹⁹

Each Solid Color or Semi-Transparent Oil House and Siding Stain. Gallon. WS1/OST3 K 247 155/176 750 F2
VOC. Formulas. Gallon. 14.99 WST1 K 641 860 F2



7⁹⁹

GOOD QUALITY Value Flat Latex House Paint. White. Gallon. L24 K 352 278 F4



5⁹⁹

4" All-Purpose Stain Brush is the easy way to apply stain! 900-4 K 601 930 6



2⁹⁹

X-O Rust® Gloss Spray Enamel helps prevent rust. Assorted colors. X01 K 196 444 F6



89⁹⁹

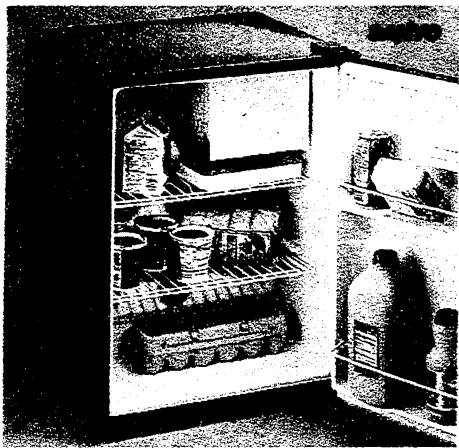
Heavy-Duty Power Sprayer draws straight from the can. 0280005 P 633 933 1



4⁹⁹

E-Z Deck Wash® deep cleans surfaces without scrubbing. Gallon. 09101 P 115 215 F6

Spray paint not sold in the city of Chicago and may be prohibited or restricted by other state and local laws.



149⁸⁸

NEW Compact Refrigerator

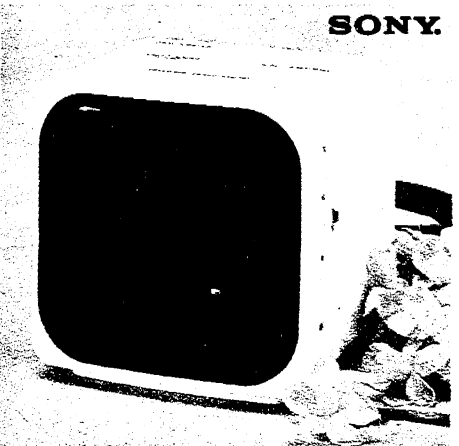
keeps your drinks cold! 2.5-cu. ft. interior with ice compartment. SR-250X M 622 475 1



99⁸⁸

Carousel II .5-Cu. Ft. Microwave Oven

cooks your meals in minutes. 525-watt; 15-minute dial timer. R1M53 M 662 999 1



SONY.

19⁹⁷

AM/FM Digital Clock Radio keeps you rockin'! Dual function display and compact cube design. ICFC120 M 441 964 6



GE

169⁸⁸

13" Diagonal Portable Color TV has an auto-adjustment system, closed captioning and more! 13GP239A M 482 885 1

WEST BEND.

19⁹⁷

10-Cup Coffeemaker is perfect to take with you to college or the office! Has an easy-fill reservoir, water window and Pause 'N Serve. AD10 M 200 306 6

2-5 Cup Hot Pot Heat 'N Server. 12.97 53505 M 613 604 1

4-Quart Hot Air Corn Popper makes a healthy snack fast! 12.97 82010 M 464 438 1

Light 'N Easy Steam/Dry Iron features a fabric guide. 13.97 F363 M 214 483 3



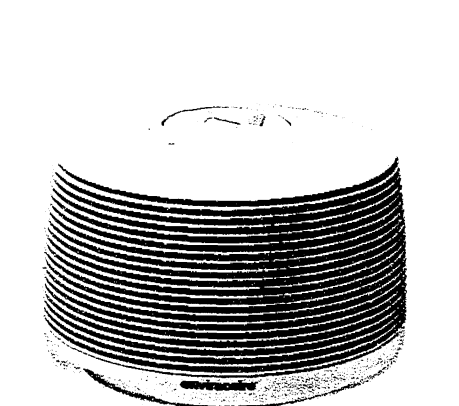
WEST BEND.

WEST BEND.



MR. COFFEE

BLACK & DECKER



enviraCaire[®]
The Science of Clean Air.

88⁰⁰

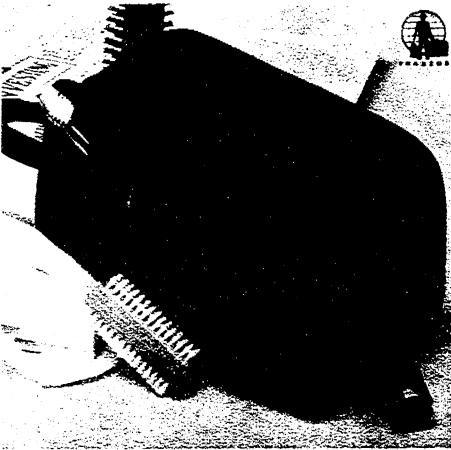
Portable Air Cleaner is powerful enough to change the air in a 9 x 12' room six times every hour! 10500 M 364 896 1



CASIO

9⁸⁸

8+2 Digit Hand-Held Scientific Calculator. Perfect for work or school! Has 135 functions. FX82S M 525 501 10



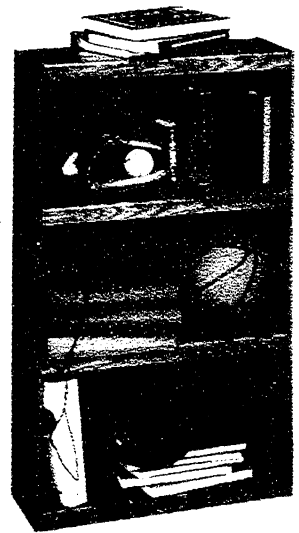
5⁹⁷

NEW American Tourister Travel Kit has four zipper compartments. Polyester. (Contents not incl.). T-098E M 471 345 6

34⁹⁷
3-Shelf Bookcase

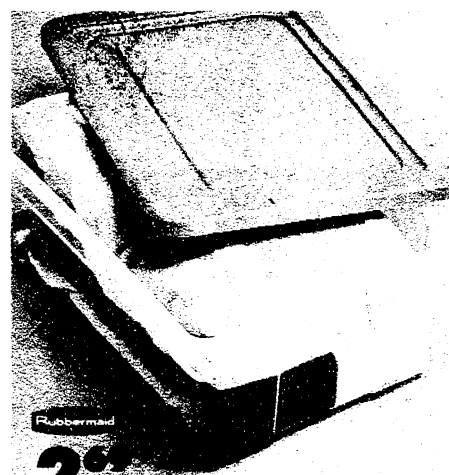
is ideal for a bedroom, den, or study. Has a full covered back and a rich Oak finish. Measures 24 1/2" x 9 1/2" x 41 1/2". Assembly required. 4422 M 601 708 1

SAUDER[®]
woodworking



True Value.

Store it, haul it, keep it
with **Rubbermaid!**



2⁹⁹

12-Quart Storage Container
is see-through and totally stackable!
16 x 11 x 6". 2220SB-87 W 576 942 F12



19⁹⁹

Tote Locker is a sturdy plastic
container for camping, college or
storage. 32 x 17 x 12 1/4". 2156PL W 582 023 1



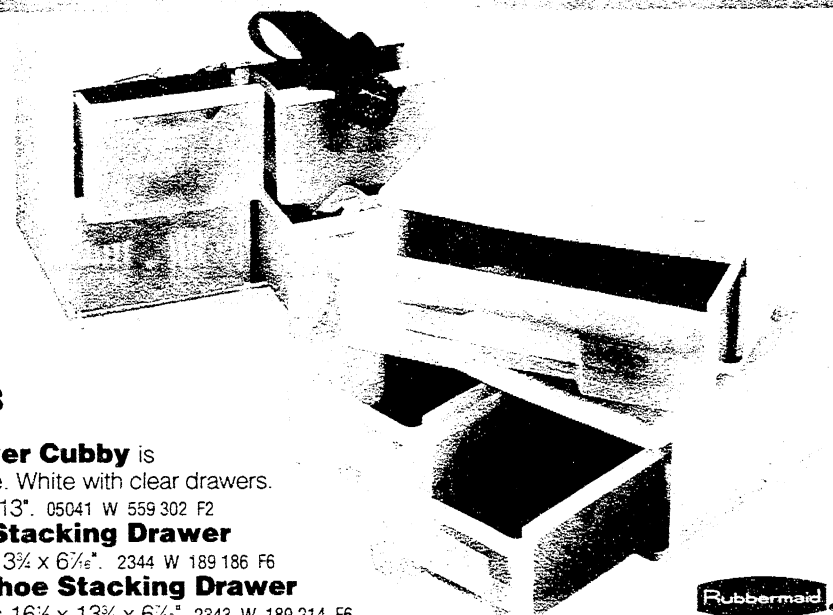
Rubbermaid

Your choice

4⁹⁹

Roughneck 10-Gallon Stackable Tote or 28-Quart See-Through Stackable Tote are the easy way to solve storage problems. The 10-gallon tote measures 24 x 16 x 8 3/4". The 28-quart tote is 23 x 16 3/4 x 6". 2214HG/2221HG-89 W 405 842/469 067

Tenex



Your
choice
8⁸⁸

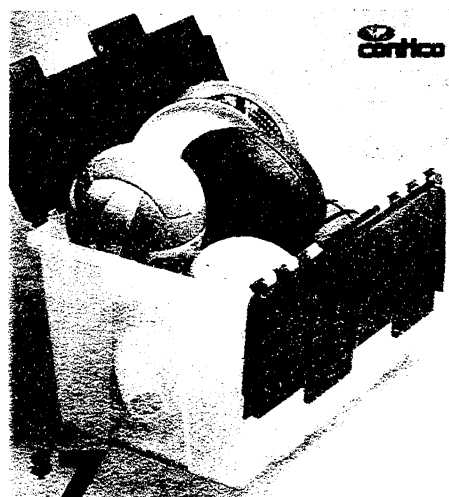
4-Drawer Cubby is
stackable. White with clear drawers.
14 x 18 x 13". 05041 W 559 302 F2

Small Stacking Drawer

is 16 1/2 x 13 3/4 x 6 7/8". 2344 W 189 186 F6

Twin Shoe Stacking Drawer

measures 16 1/2 x 13 3/4 x 6 7/8". 2343 W 189 214 F6



Corico

12-Gallon Multi-Purpose Storage Tote is clear with a red lid.
21 1/4 x 11 1/4 x 15 1/4" W. W 159 053 F6



9⁹⁹

Your choice
3-Tier Rolling Cart With Casters or 3-Cube Closet Organizer. 82000/7204 W 347 192/498 975



16⁸⁸

All-Purpose Rolling Cart has
heavy-duty casters for easy rolling even
with heavy loads. 82030 W 594 187 3



6⁸⁸

Wooden Clothes Dryer has 11
hardwood dowels and a 27" drying area.
Comes assembled. 42-030-66 W 379 537 6



3⁴⁹ Each
Old English Liquid Scratch Cover in dark or light wood formula.
 8 ounces. 8046/50 W 206 813/129 817 F12



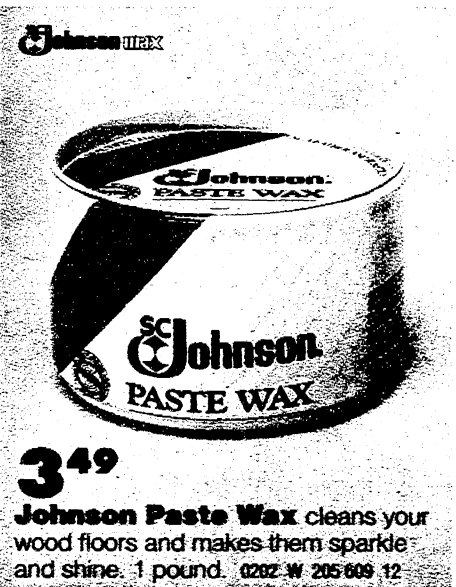
1²⁹ Each
2-Pack Stick-Ups Air Fresheners
 come in a variety of assorted scents.
 70519/24/06 W 413 187/418 343/232 964 12

Sweep, mop, polish,
 shine **and save!**

3⁹⁹
Resolve Carpet Cleaner works in
 just 60 seconds!
 Perfect for high-traffic areas with
 ground-in dirt. 22 oz.
 00601 W 542 365 F12



2⁴⁹
Lysol Concentrated All-Purpose Cleaner cuts
 through grease
 and grime. 28 oz.
 02262 W 216 077 F12



3⁴⁹
Johnson Paste Wax cleans your
 wood floors and makes them sparkle
 and shine. 1 pound. 0282 W 205 609 12



2²⁹ Each
Panel Magic or Countertop Magic for your household cleaning.
 13 ounces. PM10FM44 W 206 926/249 441 F6



EMPIRE

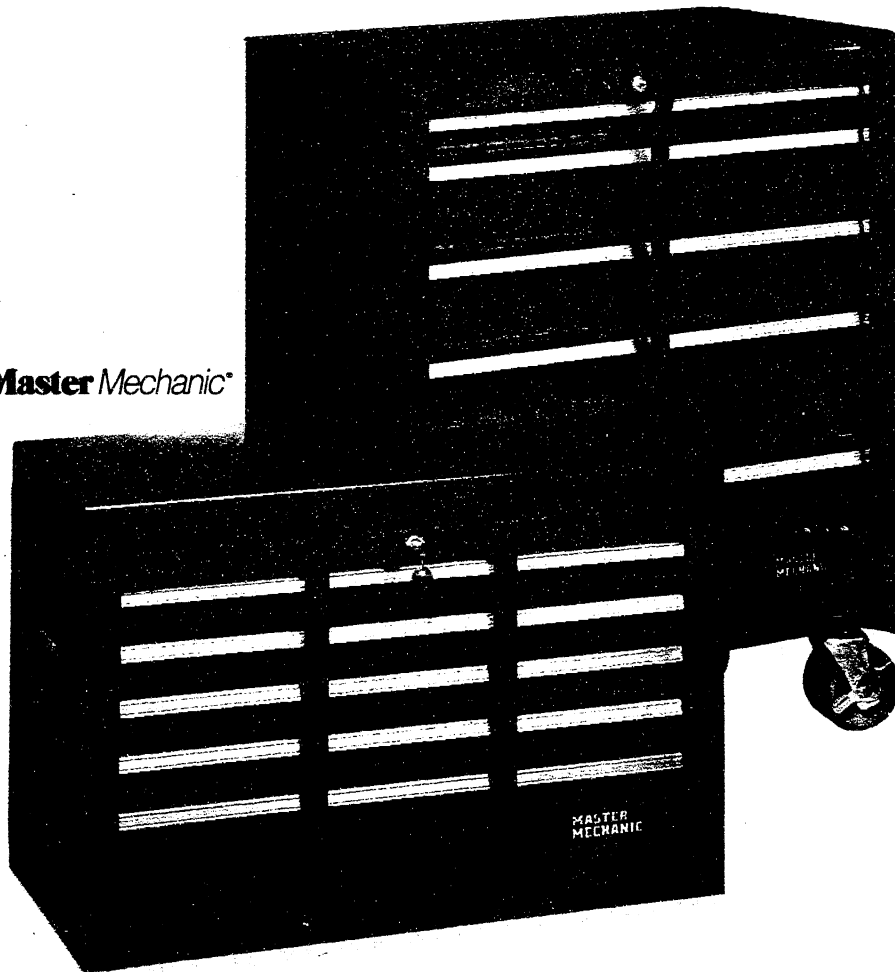


7⁹⁹

18" Heavy-Duty Push Broom has plastic bristles
 that resist the effects of water,
 mud, wet leaves or snow! 60"
 handle. 70-6483 W 446 369 F12
O-Cedar Angler Broom
 is 10" wide. Plastic flare-tip
 bristles. **3.99** 272 W 286 906 F6
**O-Cedar Power Strip
 Sponge Mop** for easy
 cleaning. **6.88** 201 W 286 278 F6
Twist-N-Mop squeezes
 excess water out with one
 twist. **8.88** 217-4 W 618 934 F4

True Value.

Master Mechanic®



SAVE \$20.00 WHEN YOU BUY BOTH FOR \$189.98

114⁹⁹

9-Drawer Chest has one 4" and eight 2" drawers. With external key locking system; molded side handles. MM900 R 185 386 1

94⁹⁹

5-Drawer Roller Cabinet has a 2" drawer and two 4 and 6" drawers. With an external locking system. MM514 R 185 374 1



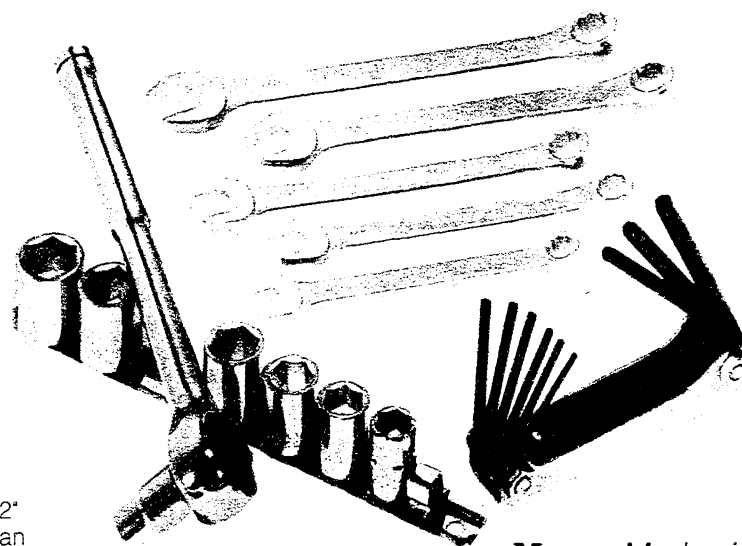
29⁹⁹

1-Gallon Wet/Dry Vac has a 1-HP motor, gulper nozzle, crevice tool and an 18' cord. 50553-00-7 J 377 567 1



39⁹⁹

6" Bench Grinder has a 1/2-HP motor; a cast-iron base & coarse and medium-grit grinding wheels. J 762 948 1



9⁹⁹

9-Piece 3/8" Drive Professional Socket Set with clip rail. R 133 402 4

\$9

5-Piece Fractional Combination Wrench Set.

M0561 R 106 161 6

3⁴⁹

9-Size Fold-Up Hex Key Set includes sizes from 5/64 up to 1/4".

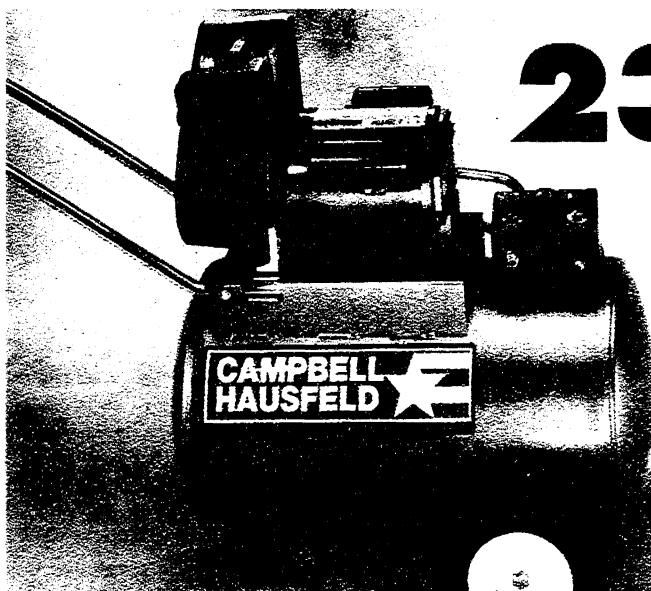
MM91 R 105 973 12

Master Mechanic®

239⁰⁰

11-Gallon, 2.5-HP Air Compressor

features an oil-less, direct-drive design that is virtually maintenance free! Delivers up to 125-psi of air pressure. WL600388 G 496 539 1



17⁹⁹

17-Piece Air Compressor Accessory Kit has all the fittings you'll ever need! MP2847 G 827 527 10



9⁹⁹

12-Volt Road Pal Air Compressor plugs into your cigarette lighter. Has 3 inflation nozzles. G 107 037 4



1.49
Liquid Wrench® Super Lubricant stops squeaks, loosens rusted parts. 12 ounce. L312 G 235 656 12



11.99 **FREE hat with purchase**
T-Plus Teflon Engine Treatment assists motor oil by adhering to metal surfaces. Quart. HPT-900-GH G 605 573 6



99¢ **Your choice**
12-Oz. Power Steering Fluid or Heavy Duty Brake Fluid. Basics for the car. CT2713/4412 G 292 920/293 464



1.99 **Your choice**
12-Oz. Carb & Fuel Injector Cleaner or 13-Oz. Carb & Choke Cleaner. 7518/7450 G 363 580/140 525 12



8.99
2-Ton Bottle Jack lifts from 7 1/2" to 13 1/2". Features a sturdy 2-piece handle. 8002NC G 498 923 6

18.88
Set of 2 Ratchet Jack Stands adjust from 10 1/4" to 16 1/2". 5,000-lb. capacity. RJS25 G 406 041 1

59.99
2 1/2-Ton Heavy-Duty Service Jack with all the safety features you want. Has a 19 1/2" lift. G489 G 667 014 1

FREE OIL FILTER!*

- To receive your FREE (up to \$4.00) oil filter refund, you must submit by January 31, 1996:
1. This completed official form, including the name of the retailer where you purchased your Quaker State® Motor Oil and oil filter of your choice.
 2. Your original dated cash register receipt showing your Quaker State® Motor Oil purchase AND oil filter purchase (with the motor oil and oil filter price circled) made between April 1, 1995 and December 31, 1995.
 3. Proof of Purchase symbol from Quaker State® motor oil case.
 4. Proof of Purchase symbol from oil filter.

MAIL TO: QUAKER STATE® FREE OIL FILTER OFFER
 P.O. BOX 2507, LUBBOCK, TX 79452-2507

Name _____ Apt# _____
 Street Address _____ State _____ ZIP _____
 City _____
 Store Where Purchased _____
 Address _____
 City _____ State _____ ZIP _____

NOTE: Offer valid April 1, 1995 - December 31, 1995. All refund request forms must be received by January 31, 1996. Offer good only in the U.S.A., Puerto Rico and U.S. Military bases. This request form, proofs of purchase and cash register receipts may not be mechanically reproduced. Limit one oil filter rebate per family and/or address. All request forms must be accompanied by mail-in certificate and qualifying proof of purchase. No redemption will be honored for any club, group/organization or legal entity. Proof(s) submitted for this offer cannot be used with any other Quaker State® offer. Offer void where prohibited or taxed. Please allow 6-8 weeks for delivery. Cash redemption value of this form 1/100 of \$.01. *Up to \$4.00. Refund by mail.

BUY A CASE OF QUAKER STATE® AND GET AN OIL FILTER OF YOUR CHOICE FREE!



1.39
Quart Quaker State® 10W30 Super Blend or 10W40 Deluxe Motor Oil. 401248/436348 G 405 092/465 167 F12

Rebate Coupon

WORKS LIKE LIQUID BALL BEARINGS™ REBATE.

1.39 sale price
-30¢ per qt. rebate (12-qt. minimum)

1.09 your "per quart" final cost after rebate
Quart Pennzoil 10W40 or 10W30 Multi-Viscosity Motor Oil. Works like liquid ball bearings™! 3653/3619 G 228 841/126 680 F12

OFFICIAL REDEMPTION COUPON

In order to receive your rebate:
BUY...A case (12 quarts) or a quart of Pennzoil Motor Oil. Remove the UPC symbol from the bottom of the carton, or write the quart UPC code number here: _____
 Complete this original mail-in coupon.

MAIL...The coupon, Pennzoil UPC symbol, original cash-register receipt (dated between 8/9/95 and 9/8/95) with the Pennzoil price circled to: _____
 "Works Like Liquid Ball Bearings™" Rebate Offer
 P.O. Box 1148

Young America, MN 55594-1148
REDEEM...A check from Pennzoil (\$3.60 for a case or 30¢ per quart)
IMPORTANT...No minimum purchase requirements. Rebate good on up to 2 cases or 24 individual quarts per family, household or address. No clubs, groups or organizations may participate. Only original coupons, receipts and UPC proofs of purchase will be honored. Offer not valid in conjunction with any other offer. Offer void where taxed or otherwise prohibited. Neither Pennzoil nor its promotion agency is responsible for late, lost or misdirected mail. Allow 6-8 weeks for processing. Rebate check requests must be postmarked on later than Sept. 28, 1996.

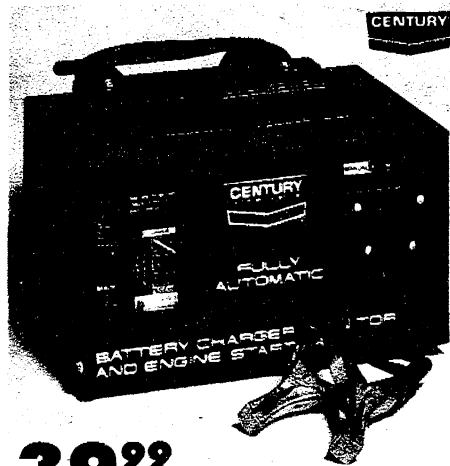
In CT only, by state law, mfr.'s rebates given at register. Limit one rebate per family, household or address.



(Please print)
 Name _____
 Address _____
 City/State _____
 Purchased From: _____
 City _____ St _____ ZIP _____

Rebate Coupon

True Value.



39⁹⁹

10/2/55-Amp Automatic Charger/Engine Starter gives 6 and 12-volt batteries a boost. 87106 G 192 572 4



CENTURY

14⁹⁹

1-Amp Battery Charger charges 6 and 12-volt batteries. Ideal for motorcycle and snowmobile batteries. 87001 G 192 515 4



Coleman Powermate

299⁹⁹

Powermate® Pressure Washer delivers 1,250 psi of cleaning power to remove dirt. Features a nozzle with an adjustable spray pattern, a high-pressure hose and a built-in ground fault circuit interrupter. PW751252 G 611 715 1

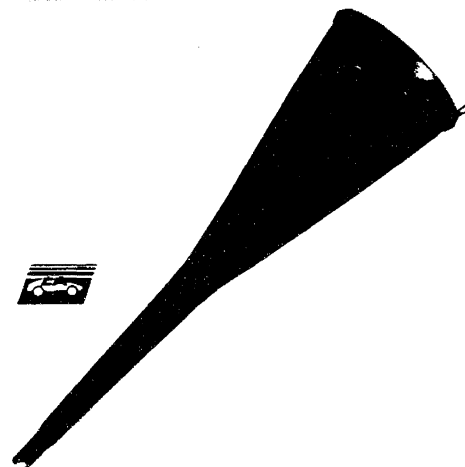
399⁹⁹

Clean Machine 1,500 psi Gas Powered Washer removes even the toughest dirt! Has a 3.8-HP engine, a 50' high-pressure hose and a gallon fuel tank. Includes soap/chemical container holder. PW811500 G 609 357 1



9⁹⁹

12' Battery Booster Cable is tangleproof! Designed for side and top terminal batteries. ST1012AC G 486 746 6



99¢

King Size Funnel lets you get into those hard-to-reach areas of your engine. 18" long, 6" diameter. 31117 G 365 288 12



9⁹⁹

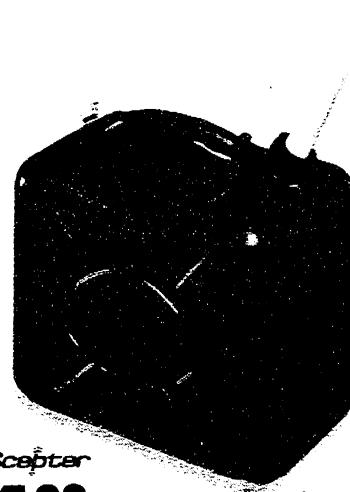
Deluxe Dome-Style Auto Compass has a light for night driving. Includes battery. 1601 G 507 558 6



LOCTITE

1⁴⁹

Rear View Mirror Adhesive for goof-proof application! Bonds at full strength in 2 minutes. 11067-2 G 404 087 12



Scepter

4⁹⁹

5-Gallon Gasoline Jug is extra large to fill all your fueling needs! Won't ever rust or corrode. J20 G 488 673 F6



29⁹⁹

5-Gallon Safety Can is made of heavy-gauge steel and has a funnel and built-in flame arrestor. U150FS G 552 190 1

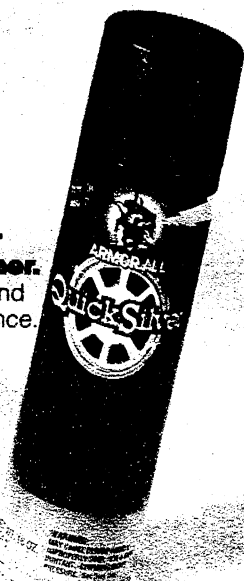
ARMORALL

3⁹⁹

ArmorAll® Quick Silver Wheel Cleaner.

Just spray on and rinse off! 16 ounce.

34100 G 332 103 12



MEGUIAR'S
CORPORATION



®

1²⁹

1-Lb. Bag of Rags.

2254 G 267 351 12

Giant Bone Sponge. 99¢

93 G 689 935 24

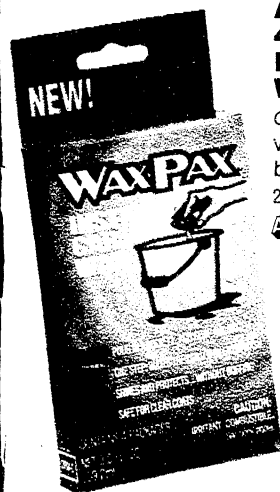
2⁹⁹

ArmorAll® 4-Pack Instant Car Wax waxes your

car while you wash it without buffing or rubbing!

24004 G 554 876 6

ARMORALL



Your choice

4⁹⁹

Nu Finish® Liquid Car Polish. Make your old car look new, or your new car look better! 16-ounce liquid or 14-ounce paste. NF76/NFP80 G 512 731/749

Meguiar's Cleaner/Wax. Choose 16-ounce liquid or 14-ounce paste. A1216/A1214 G 554 524/736

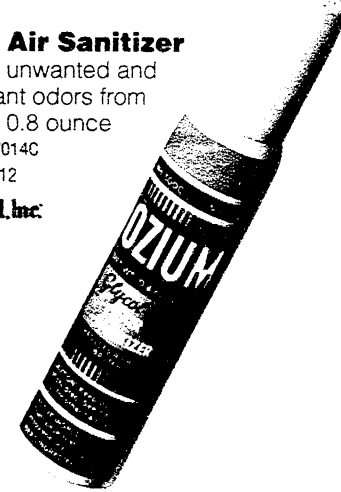
1⁵⁹

Ozium Air Sanitizer

removes unwanted and unpleasant odors from your car. 0.8 ounce spray. W014C

G 480 301 12

Blue Coral, Inc.



Castrol

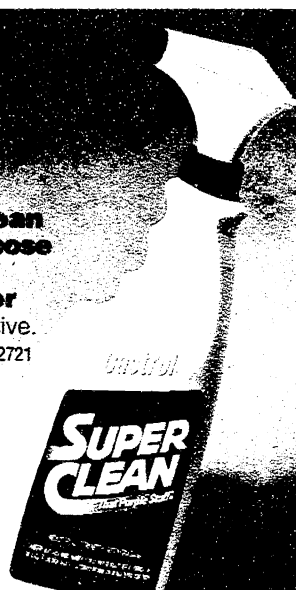
2⁹⁹

Super Clean Multi-Purpose Cleaner/Degreaser

is non-abrasive.

24 ounce. 12721

G 198 963 F12



1⁹⁹

Formula 2001® Super Protectant

penetrates and conditions surfaces! 8 oz.

T96 G 337 714 F12

turtle wax.



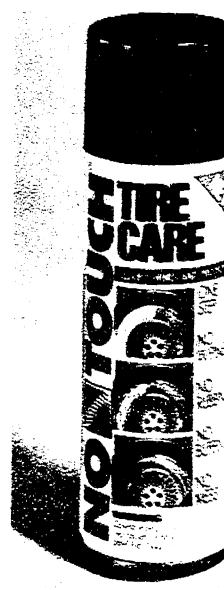
1⁹⁹

Zip Wax® Car Wash

with foaming action lifts dirt and grime. adds shine. 18 ounce.

T75 G 363 358 12

turtle wax.



NON TOUCH

2⁹⁹

No Touch® Tire Cleaner

makes your tires shine without scrubbing!

15.1 ounce.

NTCD15 G 865 303 F12

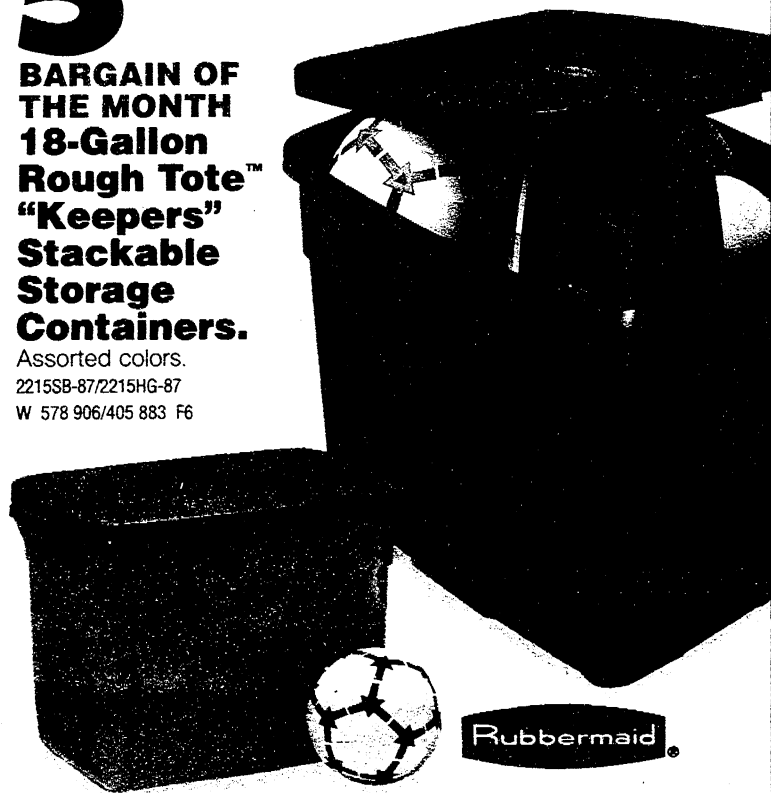
True Value.

Your choice

5⁹⁹

BARGAIN OF THE MONTH
18-Gallon Rough Tote™
"Keepers" Stackable Storage Containers.

Assorted colors.
2215SB-87/2215HG-87
W 578 906/405 883 F6



Rubbermaid®



4⁹⁹

RAID® Yard Guard is the outdoor fogger that repels bugs up to 20' away. 16 ounces. 01601 L 143 230 F12



3⁴⁹

True Value® 40-Count Yard and Trash Bags fit 33-gallon containers. TVH06TL40 W 331 959 F6



5⁴⁹

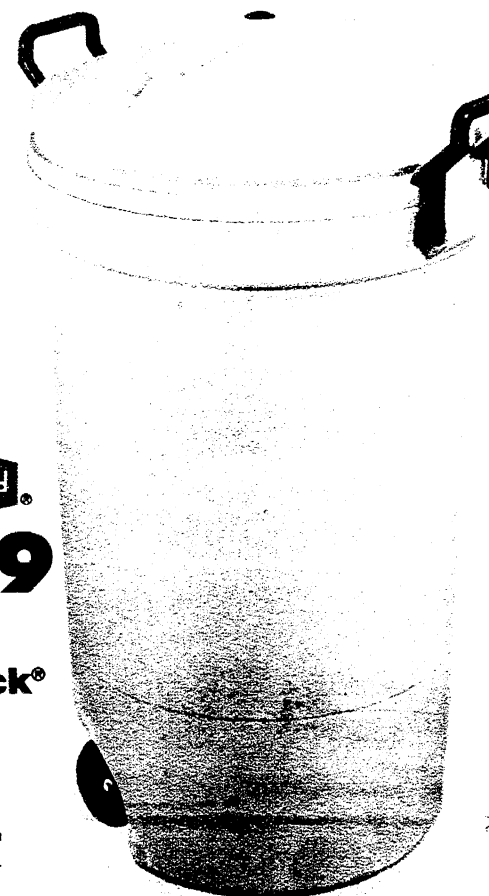
2-Pack Bug-O-Bucket 2-Pound Citronella Candles.
912 S 587 397 F6

Rubbermaid®

9⁹⁹

Roughneck® 32-Gallon Wheeled Refuse Container.

Mfr.'s 6-yr. warranty.
1333-KH W 632 745 F4



TRUE VALUE SERVICES:

- Senior Citizen Discount
- Kerosene Available
- Delivery Service
- Windows & Screens Repaired
- Glass Cutting
- Pipe Cut & Threaded
- Fishing & Hunting Licenses Available
- Keys Cut
- Gift Certificates Available
- Lay-Away

RENTAL SERVICES:

- Floor Care
- Appliance Dollies

KLEINSCHMIDT

True Value®
Hardware

19870 Sharon Valley Road
Manchester, Michigan
Phone: 428-8337

Sale Ends Sept. 4, 1995

True Value® Gift Certificates...Available at Participating Stores...\$10, \$25, \$50, & \$100. Redeemable Nationwide.

True Value®

© 1995 by COTTER & COMPANY, CHICAGO, ILLINOIS 60614. The prices advertised herein are Cotter & Company's suggested retail prices. Actual prices and terms are independently set by individual retailers and may vary. Prices may be slightly higher in Alaska & Hawaii. In Connecticut only, by State Law, manufacturers' rebates will be provided at the register. True Value® Hardware Store Members also reserve the right to limit quantities, correct pricing errors and obtain credit approval. Quantities will be limited if an advertised item is not available due to sales exceeding anticipated demand, space limitation, delivery problems or other circumstances beyond the Members' control. Limited items can often be ordered from a regional distribution warehouse. Occasionally, some items are prohibited for local sale by state or local law. Many items in this publication come unassembled. Prevailing taxes will be added to prices. True Value® Hardware Store is a registered trademark of Cotter & Company.



Say "Charge it!" at all participating stores.