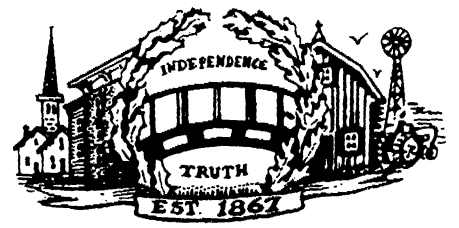


THE MANCHESTER ENTERPRISE



The Center of the Universe

126th Year -- No. 32

Manchester, Michigan

35¢ per copy

Optimist Student of the Month



The Manchester Optimists are proud to announce that Kathleen Baran, a 12th grader at Manchester High School, has been named their May Student of the Month. Kathleen is the daughter of Sig and Terry Baran of Manchester.

She has been on the honor roll throughout all four years at MHS. During that time, she has been on the Student Council in the 9th, 10th, and 11th grades and was selected the president in the 10th grade. Kathleen was also an active member of the Spanish Club in the 9th, 10th and 11th grades and was the secretary in the 11th grade.

This year, Kathleen was active in SADD, a member of Operation Graduation and a counselor at the Storer Camp for our seventh graders. As a member of the Leadership Class she chaired the Homecoming and Coming Home committees. This year, Kathleen was elected the homecoming queen and the fair

queen. She is also a member of the St. Mary's Youth Group.

Kathleen is also very involved in the athletic program. She played basketball in the 9th, 10th and 12th grades, was JV captain in the 10th grade and was named to the Cascades Conference All-Academic team in the 12th grade. Volleyball is her favorite sport, having participated for four years. She was varsity captain in the 11th and 12th grades Conference All-Academic, All Conference and All-Region for two years. Kathleen was also named to the Ann Arbor News second team, and she was the recipient of the Coach's Award. She has also participated as part of the area AAU Volleyball for the past four years.

Kathleen plans to attend Concordia College in the fall and major in biology with plans to eventually attend graduate school in Marine Biology.

Millage Vote Monday June 13

by EWG

Manchester School Superintendent Ronald Niedzwiecki has shared some information about the up coming millage election.

Our State Legislature, when they placed Proposal A before the voters, left one option of the taxation proposal open to the local electorate. That option, **Non - Homestead Property Taxation Rate**, will face local voters Monday, June 13th.

What does that mean for us, the Manchester Schools taxpayer and voter?

The Homestead Property Taxpayer. Defined as, owner occupied homes and agricultural property.

First, the rate of taxation for OPERATIONAL MILLAGE for 1993 was 37.5831 mills. A home that was worth \$100,000 had a SEV (State Equalized Valuation) of \$50,000. Your Tax, for operating millage only, was \$1,879.00.

Your operational tax for this year will be 6 mills, as levied by the State of Michigan, or \$300.00. This amounts to a reduction of property tax of, \$1,579.00 on that \$100,000 valued property. If the millage on June 13th is passed your taxes will not be affected if you are a Homestead Property Taxpayer.

The Non - Homestead Property Taxpayer. Non - Homestead property is defined as: second homes, commercial property, industrial property or

rental properties. The 6 mills are levied by the State of Michigan. Additionally 18 mills can be levied by the local school district. However those 18 mills must be voted by the district voters. (Agricultural property is exempt from the 18 mills if the property is used for agricultural purposes.)

If the millage is passed, non-homestead property will be taxed at the rate of 24 mills, vs. 37.5831. A property worth \$100,000, (SEV \$50,000) produced operating tax of \$1,879 in 1993. 1994 operating tax will be \$1,200 a property tax reduction of \$779, if the millage passes.

For the District, the 18 mills will garner some \$869,018 of revenue from taxes, based on SEV of \$48,278,759 of non-homestead property. This revenue represents 12.8% of the School's operating budget. Manchester Schools budget is projected at 6.785 Million Dollars for 1994 - 1995.

Manchester School System voters will be asked to approve the levying of those 18 mills Monday, June 13th.

Manchester Community Schools will host two VOTER INFORMATION NIGHTS for the school operating millage and the June 13th millage proposition for non-homestead property.

Thursday, June 2, 1994 - 7:00 PM at the High School Library

&

Wednesday, June 8, 1994 - 7:00 PM at the High School Library.

These two meetings are intended to provide the same information - allowing you alternate chances to attend.

Questions & Answers Related to School Millage Elections

(The following information was provided by Superintendent of Schools Mr. Ron Niedzwiecki)

• Why are schools still having millage elections?

Under the terms of legislation tied to the constitutional amendment passed on March 15, 1994, schools are required to levy 18 local mills of non-homestead property tax in order to receive all of the foundation grant. (Foundation grant—Specified by the state, a guaranteed amount of money per pupil per year — currently at \$4,200) Local property tax requires voter approval. Without approval of these 18 mills schools will not get their full foundation grant amount.

• Will districts still be holding millage elections to override the Headlee Amendment?

It is very unlikely. The constitutional amendment passed in March includes a cap on assessments of 5% or the rate of inflation, whichever is less. With this provision it is possible but unlikely that this amendment will affect school millages.

• When does the 5% assessment cap go into effect? 1995

• Will every school district be asking for millage at the annual school election in June?

No. If a district has 18 or more operating mills that have not expired they may continue to levy those mills on non-

continued page 15



Manchester turned out for the Memorial Day Parade on Monday, May 30

Inside This Issue

Community Calendar.....	Page 2
Memorial Day.....	Page 3
Editorial/Opinion.....	Page 4
Local Government.....	Page 5
Church News.....	Page 6
Announcements.....	Page 7
Consortium.....	Page 9
People.....	Page 10
Senior Citizens.....	Page 9
School Pages.....	Page 12/13
Classifieds.....	Page 14

Please tell us if you have a copy of THE MANCHESTER ENTERPRISE to...

Manchester Township Library
1000 W. Main St.
Manchester, MI 48158

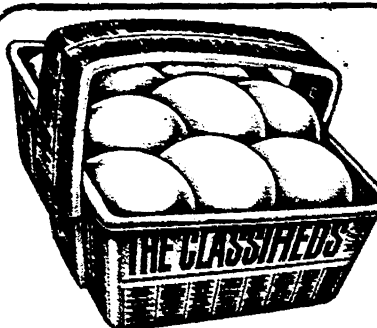
Community Calendar

Scheduled Meetings

Bridgewater Twp.
Doug Parr Supervisor
428 - 8243
Karen Weidmayer
13360 E. Austin
428-8641
Planning Commission
2nd Monday 7:30
Township meeting
3rd Tuesday 8:00

Freedom Township
Town Hall 428-7545
11508 Pleasant Lk. Rd.
Robert Little Supervisor
Julie Schable, Clerk
13785 Pleasant Lk.
428-7241
Township meeting
2nd Tuesday 8:00
Planning Commission
meets on demand
Manchester Township
Town Hall 428-7090
Ron Mann Supervisor
275 S. Macomb
Kathleen Hakes, Clerk
Township meeting
2nd Monday 8:00
Planning Commission
Last Monday
FIRE DEPARTMENT
428-9439 non-
emergency calls
Sharon Township
Supervisor John Savage
20453 Pleasant Lk. Rd.
428-8907
Duane Haselschwerdt
428-7733, 428-7591
8440 M-52
Township Meeting
1st Thursday 8:00
Planning Commission
2d or 3d Thursday
Manchester Board of
Education
Pat Sahakian, President
Meetings
3d Monday 7:45
M.H.S. Library
Superintendent - Ron
Niedzwicki 428-9711
Village of Manchester
Larry Becktel President
Jeff Wallace Manager
120 S. Clinton
428-7877
Village Council Meets
1st & 3d Monday
7:00

The Community Calendar is a regular feature of the Enterprise. If your group would like their regular meetings printed here, please let us know at 428-8173.



The classifieds are always a safe bet for buying, selling, and finding.

So stop scrambling around and put your eggs all in one basket! Come to the one source for everything.

The Manchester Enterprise

Chelsea Painters

21st ANNUAL CHELSEA PAINTERS ARTFEST

SAT JUNE 4 & SUN JUNE 5, 1994
10 AM - 5 PM

at the
CHELSEA MEDICAL CENTER
just off M-52 in Chelsea, MI

ENTERTAINMENT by Dusty Rhodes
REFRESHMENTS sponsored by C.C.H. Auxiliary

% of sales donated to the
Palmer Medical Scholarship

COMMUNITY EVENTS

Monday

1st Monday: Manchester Township Library Board meets 7:30 pm.

1st Monday: Manchester Masonic Lodge, business meeting 7:30

1st & 3rd Mondays: Manchester Village Council, 7:00
2nd Monday: Bridgewater Township Planning Commission meets 7:30

2nd Monday: Manchester Township Board meets 8:00
2nd & 4th Mondays: Manchester Optimist Club
3rd Monday: School Board meets MHS Library 7:45
Last Monday: Manchester Township Planning Commission

Tuesday

2nd Tuesday: Freedom Township board meets 8:00

2nd Tuesday after 1st Monday: Village Planning Commission

2nd Tuesday: Manchester Area Senior Citizens, 9:30 am

Thursday

Every Thursday: Manchester Community Band, 7:30 pm

1st Thursday: Sharon Township Board meets 8:00

1st Thursday: American Legion Post #117, meets 7:30

2nd or 3rd Thursday: Sharon Township Planning Commission

3rd Thursday: Cub Scout Pack Meeting, 7:00 pm

Friday

2nd Friday: Village Piche Makers meet at Emanuel Church, 7-10 pm. All are welcome.

Wednesday

1st Wednesday: Veterans of Foreign Wars, 7:30 pm

2nd Wednesday: American Legion Auxiliary, meets 7:30

2nd Wednesday: Manchester Recreation Task Force, 7:30 at Blacksmith Shop.

3rd Wednesday: Community Resource Center Board, 7:30

3rd Wednesday, WIC Program and Immunization Clinic, 9:30-3:00 Senior Citizens Bldg.

Every Wednesday: Kiwanis, 6:30 at Haarer's

Misc. Notices

Call us at the Enterprise to see how your Group's meetings can be entered in the Community Events Register! 428-8173.

MANCHESTER ENTERPRISE

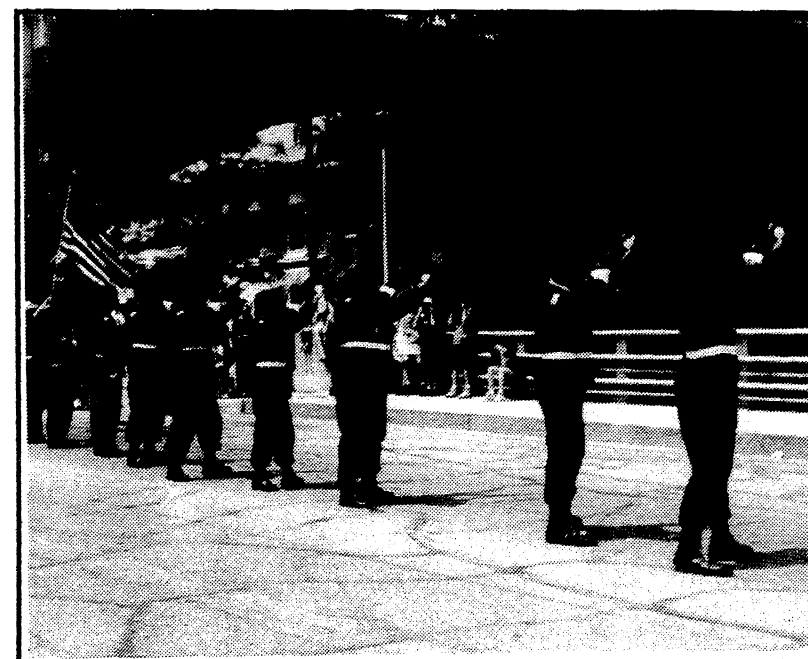
Second Front Page: Lest we forget

Waving the Flag in Manchester

Attending two very different Memorial Day Services this year highlighted the uniqueness of Manchester's celebrations of the traditional patriotic holidays.

The Manchester American Legion firing squad attended services at Arborcrest Memorial Gardens in the shadow of the VA Hospital in Ann Arbor on Sunday. Attending this Memorial Day provided a "big city view" of a traditional holiday. Perhaps 100 people attended, including participants, although the event was publicized to local media and signs directing one to the location were plentiful. Far more people attended a soccer event nearby. Ann Arbor's Mayor, and representatives from veteran's groups, including the national vice-president of Paralyzed Veterans of America, were speakers. Professional musicians and the Army Reserve Band provided music. A plaque entitled "America the Beautiful" was dedicated in tribute to the men and women of the U. S. Armed Forces. It was obvious the ceremony meant a lot to the older people attending, but where was everyone else?

In contrast, Manchester's streets out to the cemetery were full on Monday. Over 200 people stood at the bridge for the ceremonies, including participants, and another crowd awaited the parade at Wurster Park. Still others watched the flag pass from their front yards or waited at the cemetery for the culmination of the ceremonies. Parade participants ranged from pre-schoolers to octogenarians. Our high school band was as enjoyable as any professionals who could have been hired. Band members Kathy Doyle and Jennifer Noggle did an excellent job on "Taps". Rev. Stanley McKenzie, a retired Army Lieutenant Colonel, formerly from Norvell, spent his thirty-third Memorial Day with



the people of Manchester, bringing a timely message. At the American Legion tank monument, a brief but moving commemoration was held in honor of those Manchester residents who had given their lives in service to our country.

A behind-the-scenes look at our Memorial Day celebration would reveal many people who give up picnics, gardening, reunions and graduations to make this a meaningful day for the rest of us. Lester Koch handles the

public address (done for many years by Morgan Kern prior to his passing). Commander Kerry Deacons of Legion Post 117 puts in many hours of effort, as does Roger Fillyaw and the firing squad. Manchester VFW Post 10329 also presented a color guard for the past few years. Jay Clouse is "Parade Marshal" and video

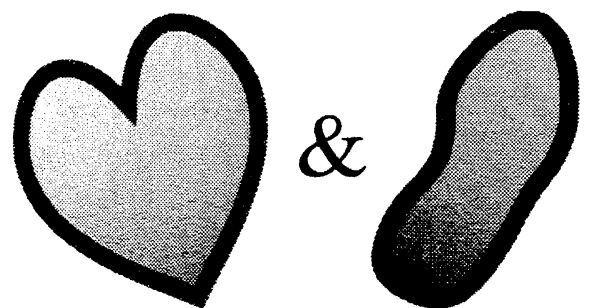
historian. The Sons of the American Legion, Legion Auxiliary and Junior Auxiliary are all full participants in the parade and the dinner which follows. The Daisies, Brownies, Girl Scouts, Cub Scouts and Boy Scouts all make it a point to participate in the parade each year, giving the youth of Manchester a grounding in history and tradition. Citizen participation is always high. Flags will wave again on June 6 (D-Day observance); on

Flag Day, June 14; on July 4; and on Labor Day, September 5. During the summer when the flag flies so often is a good time to review flag etiquette. Richard Cole provided these suggestions from the Code of Etiquette for Display and Use of the Flag.

"The flag should be hoisted briskly and lowered ceremoniously, and should never be allowed to touch the ground or the floor. When hung over a sidewalk from a rope extending from a building to a pole, the union should be away from the building. No other flag may be flown above or, if on the same level, to the right of the U.S. Flag.

"In an auditorium, the flag may be displayed flat, above and behind the speaker. When the flag is displayed horizontally or vertically against a wall, the stars should be uppermost and at the observer's left.

"It should not be displayed on a float, motor car or boat except from a staff. Advertising signs should not be fastened to its staff or halyard." Thank you, Mr. Coles; and thank you, Manchester, for the respect you show to our veterans and our country in the observance of these holidays. -MJC



10K, 5K and 2 Mile Run-Walk Saturday, June 4, 1994

Meet Me In Chelsea for the 5th annual...

Heart & Sole



For applications or further information call: 313/475-4063.

- ♥ Pre-race spaghetti dinner, runner's workshop and in-person registration: Friday, June 3 6-7 p.m. CCH Dining Room
- ♥ Age group awards
- ♥ Post-race refreshments, prizes and entertainment
- ♥ Separate start for 2-mile walkers
- ♥ T-shirts guaranteed
- ♥ Split times and water stops on all courses

MANCHESTER SPORTSMAN CLUB TRAP SHOOT



Sunday, June 5th
1:30 PM

Open to the Public

Come join in the Sport!

McLennan Landscape

A personalized professional service

- Design Consultation
- Plant Installation
- Retaining Walls
- Wild Flowers
- Finish Grading
- Shade Gardening
- Hydro Seeding
- Brick Pathways

(313) 428-7005

THE MANCHESTER ENTERPRISE

The Manchester Enterprise is published each Thursday at 109 East Main St., Manchester, MI 48158, with second class postage paid at the Manchester Post Office.

POSTMASTER: Send Form 3972 to: Manchester Enterprise, P.O. Box 37, Manchester, MI 48158.

The Manchester Enterprise, Inc.
(313) 428 - 8173
Editor & Publisher
Emory Garlick

Production & Writer
Marsha Johnson Chartrand

One-year subscriptions are \$15 within Washtenaw County, \$18 outside the county. Deadline for display ads, photos, classifieds and news articles is Monday at 3:00 p.m.

The Manchester Enterprise. No part of this publication may be used without the written permission of the publisher.

© 1994 The Manchester Enterprise



Dial a Garden

971-1129

Wednesday, June 1: Lake Front Lawns
Thursday, June 2: Prevent Lawn Mower Injuries
Friday, June 3: Diseases on Fruit Plants
Monday, June 6: Insect problems in the Vegetable Garden
Tuesday, June 7: Cabbage Insects
Wednesday, June 8: Earwigs

MICHIGAN FESTIVAL SCHEDULE 1994 June

- | | | | |
|------------------------|---|-------|---|
| 1-16 | Matrix:Midland Festival, Midland, (517) 631-7557 | 17-19 | 5th Annual African American Festival, Lansing, (800) 648-6630 |
| 2-5 | Special Olympics State Summer Games, Mt. Pleasant, (800) 644-6404 | 17-19 | Shores Family Fun Fest, Memorial Park, St. Clair Shores, (810) 777-2741 |
| 2-5 | APBA Gold Cup Hydroplane Races, Detroit, (313) 259-7760 | 18 | Venetian Night, Caseville, (800) 35-Thumb |
| 3-5 | Festival '94, Grand Rapids, (616) 459-2787 | 18 | St. Ignace Polka Fest, KC Hall, St. Ignace, (800) 338-6660 |
| 3-5 | Curwood Festival, Owosso, (517) 723-2161 | 18- | Ann Arbor Summer Festival, Ann Arbor, (313) 747-2278 |
| 3-12 | Lilac Festival, Mackinac Island, (906) 847-3783 | 23-25 | Straits Area Antique Show, St. Ignace, (800) 338-6660 |
| 4-5 | Summer Art Fair, Midland, (517) 631-3250 | 23-26 | Charlotte Bluegrass Festival, Charlotte, (313) 227-1997 |
| 5, 12, 19, 26 | Mackinac Island Music Festival, Mackinac Island, (906) 847-3783 | 24-25 | Celebration '94, Centennial Park, Holland, (616) 396-3278 |
| 8-12 | Flushing Festival '94, Riverview Park, Flushing, (810) 659-4141 | 24-26 | Bay City River Roar, Bay City, (517) 895-1222 |
| 9-11 | Cereal Festival, Battle Creek, (616) 962-2240 | 24-26 | Greek Festival, Saginaw Township, (517) 793-8822 |
| 10-12 | High on Kalamazoo Air Show, Kalamazoo, (616) 381-1692 | 24-26 | Liberty Fest, Heritage Park, Canton, (313) 397-5110 |
| 10-12 | ITT Automotive Detroit Grand Prix, Detroit, (313) 267-7116 | 24-26 | Michigan Challenge Balloonfest, Howell, (517) 546-3920 |
| 11 | Strawberry Festival, Battle Creek, (616) 962-2240 | 24-26 | Thumb Festival, Sandusky, (313) 684-4445 |
| 11-12 | Free Cadillac Family Fishing Festival, Cadillac, (800) 225-2537 | 24-26 | Michigan Sugar Festival, Sebawaing, (517) 883-2150 |
| 11, 12, 18, 19, 25, 26 | Wards Orchards Strawberry Festival, Ypsilanti, (313) 482-7744 | 24- | Muskegon Summer Celebration, Muskegon, (616) 722-6520 |
| 11-18 | Bavarian Festival, Frankenmuth, (517) 652-8155 | 25-26 | Muzzleloader-Shooting Matches, Manistee, (616) 723-9016 |
| 14-19 | Waterfront Jamboree, Port Austin, (800) 35-Thumb | 29- | International Freedom Festival, Detroit-Windsor, (313) 923-7400 |
| 16-18 | Three Rivers Water Festival, Three Rivers, (616) 278-8193 | 29- | Summerfest '94, Clare, (517) 386-2442 |
| 17-19 | National Strawberry Festival, Belleville, (313) 697-3137 | 30- | Jordan Valley Freedom Festival, East Jordan, (616) 536-7351 |



Follow your dream, not the beaten path.

No matter where your vacation dreams take you, AAA Travel Agency can get you there. We're Michigan's largest full-service travel agency.

1200 S. Main St., Ann Arbor 930 - 2250

Thinking of a Change?

Then consider this lovely 3 Bedroom home with full basement, att. garage and formal dining overlooking quiet Batteese Lake. Lot size of 176 X 200 enables you to hours of enjoyment on land or water. Why not make your Summer plans here only \$89,500.

For more info call
Cindy Lawson
428 - 0740
CHELSEA REALTY, INC.
475 - HOME

Editorial / Opinion

Dear Editor:
 Memorial Day is the first of several Spring and Summer holidays on which it is traditional to display our country's flag. Unfortunately, due probably to being unaware of flag etiquette, well meaning people sometimes display the flag improperly. Please help people to understand that there are correct and incorrect ways to display the flag by publishing the basic rules of flag etiquette.
 Yours truly,
 Richard L. Cole
 (See Rules of Etiquette, page three)

Dear Editor,
 I am writing to correct two inaccuracies reported in your front page article, "Irregularities Uncovered" (May 26, 1994 edition).
 First, you reported that "all agricultural programs have been eliminated". In fact, the consortium offers an agri-science class, based at the Manchester High School. Manchester presently has 14 students enrolled".
 Second, you reported that the "Manchester Board of Education, in a 4 to 3 vote at their May meeting, decided to continue as members of the Consortium. The vote to which you refer was a 4 to 3 vote against immediately withdrawing from the consortium. No decision has been made concerning entering into the 5-year contract to continue with the consortium; however, a decision must be made soon. The superintendent was instructed by the board during the meeting to analyze alternatives and to present all the facts necessary for a board decision.
 Formal discussion of this issue has not yet been placed on a meeting agenda but I encourage the public to attend any meeting to provide input into the proposal being considered.
 Bruce C. Abbott, Secretary
 Manchester Board of Education

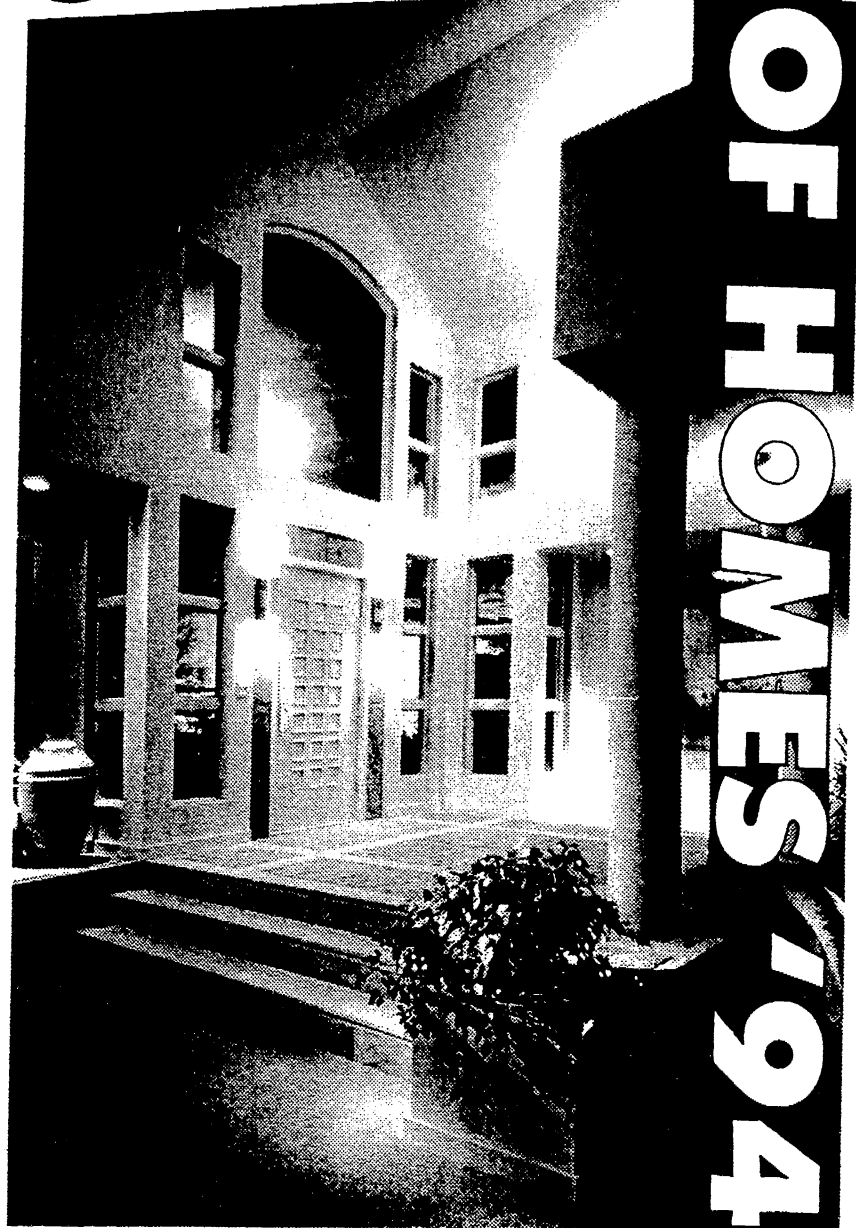
Dear Editor,
 I would like to thank Superintendent Niedzwiecki, Mrs. Henry, the Kindergarten teachers, and support staff for the very informative meeting last Wednesday evening (May 25). It is comforting to know that our Kindergarten program is in very capable hands.
 Mrs. Supers and Mrs. Hankamp presented a comprehensive overview of the Kindergarten curriculum. All the staff appeared to have put a lot of energy into this presentation and were quite willing to discuss the program and answer any questions from parents and the community.

I feel that the presence of the entire Kindergarten staff calmed many fears about the Manchester program. Thanks to all of them for a very informative meeting.
 Connie Achtenberg

SHOWCASE

Tour 51 new homes in various price ranges

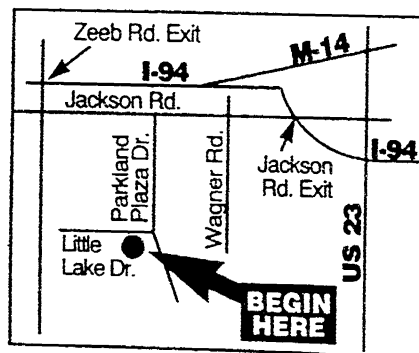
Presented by
The Home Builders Association of Washtenaw County
 (313) 996-0100



June 11-19

Sat., Sun., Wed. 11am to 8pm
 Mon., Tues., Thurs., Fri., 6pm to 10pm

Tickets are \$5.00 for adults, children 16 and under free. Tickets sold at all Showcase Homes and may be used during the entire show. Advance tickets may be purchased at the Home Builders Association building 179 Little Lake Drive • Ann Arbor



Co-Sponsors:

Suzanne's Interior Decorating
 201 E. Main
 In the Mill
 428 - 0228
 428 - 9193
 In Home Service

- DRAPERIES
- BEDSPREADS
- FEATHERED BEDS
- DOWN COMFORTERS & PILLOWS
- VERTICALS
- MINI-BLINDS
- PLEATED & LAMINATED SHADES
- WALLPAPER

A Good Selection of New and Used Cars On Our Lot
TIRB CHEVROLET & GEO
 Don't Get Disturbed...See Tirb!
 A Metro Detroit Chevy Dealer
 313-428-8212 • Manchester

8409 Boettner Rd Bridgewater
 8 - 6 Mon - Fri 8 - 2 Sat
 944 - 0332
NOW OPEN
Complete Auto Detailing & More

- ▲ Buffing & Waxing starting at \$40 and up
- ▲ Interior Cleaning & Shampooing starting at \$40 & up
- ▲ Sunroof Sales starting at Just \$159 and up
- ▲ Splash Guards
- ▲ Truck Accessories
- ▲ Pick Up & Delivery Available

Local Government

Mayor Exchange Day in Bangor

On Monday, May 23, Manchester exchanged mayors with Bangor, Michigan. After meeting at about the halfway point in Marshall for breakfast, Mayor Larry Becktel, Trustees Joe Marshall and Bob Vought continued on to Bangor. We were met at the City Hall by the recently retired City Manager and several council members and staff of the City of Bangor.
 We started the day with a tour of the City Hall and then proceeded across the street to visit the District Library. We then visited the Bangor Schools

and toured the High School and Middle School, which is all in one complex.
 After a very good lunch at the Chicken Chalet, we then toured the many city parks. At 2:00 pm, we were given a tour of the H.W. Freestone Pickle Co., a family owned company located in the city. We were also given some packaged pickles to bring home and enjoy later.
 We took a small walking tour of the downtown area; small because we could not get Joe out of the antique mall. When we finally finished, we took a tour

of other city buildings and current city projects such as the streetscape, industrial park and new DPW building.
 R & R was held at the home of Shad and Norm Sutherby, both retirees from city offices. A good time and snacks were served. Dinner was held at the Lone Star restaurant in Bangor, and the Mayor Pro-tem of Bangor presented Manchester Village President Larry Becktel with a key to the city along with other gifts to our village representatives.
 - Larry Becktel

PROPOSED SYNOPSIS

of the regular meeting of the Manchester Township Board held May 9, 1994:

The meeting was called to order at 8:00 p.m. with all members present. Several visitors were also present.
 The Board approved the minutes of their last meeting and accepted the minutes of the Planning Commission and Library Board. Bills paid since the last meeting were reviewed. Treasurer Turk's report was accepted. Bills totaling \$2259.87 in the General Fund, \$541.47 in the Constable Equipment Fund, and \$21543.77 in the Fire Truck Fund were approved for payment.

Fire Department activity for the month included 13 fires, 8 medical, 6 personal injury, and 1 mutual aid, for a total of 28 runs. The final draft of the fire contract was ratified, and the Supervisor and Clerk were authorized to sign it. Mike Scully was appointed fire chief for the remainder of this fiscal year, and to serve as chief for the 1994-95 fiscal year. There were no changes in the appointment of the other officers. They were: Assistant Chiefs- Gale Koebbe, Gary Wiedmayer; Captain-William Scully; Lieutenant-Gene Kemeter, Kris Kenster, Secretary/Treasurer Harry Johnson.

A resolution of interest in joining with Bridgewater, Freedom, or Sharon Townships in establishing a district library was adopted. The township must appoint five representatives to a district library planning committee which will prepare a district library agreement. Any persons interested in an appointment to this committee should contact the township

There being no further business, the meeting adjourned at 10:45 P.M.
 Next meeting of the Manchester Township Board will be Monday, June 13th, at 8:00 p.m.
 Submitted by Kathleen M. Hakes, Clerk
 Approved by Ronald E. Mann, Supervisor

NOTICE OF PUBLIC HEARING TO ADOPT FISCAL YEAR 1994/95 BUDGET

VILLAGE OF MANCHESTER
JUNE 6, 1994
 The Manchester Village Council will hold a public hearing on Monday, June 6, 1994 at 8:10 p.m. on the proposed budget for the fiscal year 1994/95. A detailed copy of the proposed budget is available in the Village Office during regular business hours.
 Karen A. Tucker

PUBLIC NOTICE VILLAGE OF MANCHESTER

PUBLIC HEARING ON BASIC CABLE TELEVISION RATES
JUNE 20, 1994
 PUBLIC NOTICE is hereby given that a public hearing shall be held by the Manchester Village Council at 7:30 p.m. on Monday, June 20, 1994 at 120 S. Clinton St., Manchester, Michigan on the Form 393 and proposed schedule of rates of Clear Cablevision for the basic cable television service tier and associated equipment. Interested parties may appear in person, by agent, or by letter at such hearing to submit comments on or objections to the Form 393 and proposed schedule of basic cable rates. Copies of the Form 393 and proposed schedule of basic cable rates and related information (except those parts which may be withheld as proprietary) are available for inspection or copying from the office of the Village Clerk, 120 S. Clinton St., Manchester, Michigan, 48158.
 Karen A. Tucker
 Village Clerk

Notice Of Public Hearing Sharon Township Zoning Board of Appeals

PLEASE TAKE NOTICE a public hearing will be held at 7:30 pm on Wednesday, June 8, 1994 at the Sharon Township Hall, 18010 Pleasant Lake Road, to consider an application from Larry Gillen for a variance from the Sharon Township Zoning Ordinance. He is requesting a variance to obtain land use permits to construct buildings and/or residences on non-conforming parcels generally located south of Lehman Road, West of M-52, North of Grass Lake Road, Manchester, MI which was previously a 120 acre parcel that has been split into 11 separate parcels currently known as tax parcel 15-02-100-03 through 06 and 15-02-400-11, 13, 14, 15, 16, and 18.
 Please direct written comments before June 8, 1994 to: Sharon Township Zoning Board of Appeals, Jan Imonti, Chairman, 17500 Sharon Valley Road, Manchester, MI 48158 or FAX comments to (313) 428-9645.
 The Sharon Township Zoning Board of Appeals will have their quarterly meeting immediately following the public hearing.

AGENDA

- MANCHESTER VILLAGE COUNCIL**
Monday, June 6, 1994
7:00 p.m.
1. Call meeting to order
 2. Pledge of Allegiance to the Flag
 3. Minutes of the previous meeting
 4. Approval of Agenda
 5. Correspondence
 6. Public Participation - Bill Cannon Sewer Extension Request
 7. Treasurer's Report
 8. Accounts Payable
 9. Council Committee Reports
 10. Old Business
 - a. Manchester Stamping Sewer Extension Request
 - b. Resolution to Increase Millage
 - c. Adoption of 1994/95 Millage Rates
 - d. Adoption of 1994/95 Budget
 - e. Update on 223 Riverside House
 11. New Business
 - a. Other
 12. Adjourn
- PUBLIC HEARING 8:00 P.M. INCREASING PROPERTY TAXES
 PUBLIC HEARING 8:10 PM ADOPTING BUDGET FOR 1994/95

FREEDOM TOWNSHIP SUMMER CLEAN-UP DAY

Saturday, June 11, 1994
 9:00 a.m. - 2:00 p.m.
 Freedom Township Hall
 11508 Pleasant Lake (at Lima Center)

- **Please Bring:** Household Refuse, Discarded Furniture, Mattresses, Scrap Metal and Iron, Appliances*
- **Please Do Not Bring:** 55- Gallon Drums, Liquids of any Kind, Batteries, Tires, Fencing, Large Car Parts, Building Materials.
- Recyclables can be prepared in Mister Rubbish recycle bags and dropped at the recycle bins.
- Drivers License or Property Tax Statements will be required for proof of township residency.

* All refrigerators, freezers, air conditioners or any other appliance with refrigerants must be tagged by a qualified technician who has removed the freon or they will not be accepted.

Bridgewater Township Planning Commission May 9, 1994 Summary Minutes

Commission Chair James Fish called the meeting to order at 7:34 P.M. The Minutes of the April 11, 1994 meeting were approved as written.
 Douglas Page, owner of Battleground, Inc. presented information requested after the April 11, 1994 public hearing on his request to amend his conditional use permit. Mr. Page had a revised drawing of his playing field which included placement of 14 lights. He plans to make the lights 12 feet high and to use 250 watt sodium yard lights.
 A discussion of the days and playing hours followed. It was decided to table the question until next meeting to allow time for a definite operating hours proposal to be formulated.
 Two residents presented their concerns regarding flooding on property located on the Northwest corner of the intersection of Lima Center and Braun roads. The residents believe the flooding will be made worse, if the property is developed. There are indications that development may be planned. Chairman Fish assured the parties that the Planning Commission will notify the Drain Commissioner of the potential problem.
 Chairman Fish informed the Commission that he had received a request for a conditional use permit for a tire sales business at 8409 Boettner Rd. in Bridgewater. The Commission agreed to request further information to clarify the request.
 It was recommended that the draft of the proposed lot split ordinance should be submitted to the Washtenaw County Planning Commission for comments before further consideration.
 The zoning Administrator reported issuing permits for seven new single family dwellings.
 Meeting adjourned at 10:52 P.M. Next Meeting is June 13 at 7:30 P.M.
 Wade Peacock
 Secretary

Church News

BAPTIST CHURCHES

NORTH SHARON BAPTIST CHURCH—Bill Winger, Pastor; Clifford Whitenburg, Asst., Sylvan & Washburn Rds. 428-7222; SS 10:am; Morning Church 11:am; Eve. Church 7:pm; Weds. Bible Study & Youth Mtg 7:pm

VICTORY BAPTIST CHURCH—Rev. R. Dean Cooper, Pastor; 423 S. Macomb, 428-7506. Sunday School 10:00 a.m.; Morning Worship 11:00 a.m.; Evening Public Bible Class 6:00 p.m.; Wednesday Praise and Prayer 7:00 p.m.

CATHOLIC CHURCH

ST. MARY'S CATHOLIC CHURCH—Rev. Francis J. Murray, Pastor; Telephone 428-8811; Masses: Monday thru Wednesday, Friday 8:30 a.m., Thursday 7:00 p.m., Saturday 5:00 p.m., Sunday 8:30 a.m. and 10:30 a.m.

LUTHERAN CHURCHES

ST. JOHN'S LUTHERAN CHURCH—Rev. Dennis A. Falk, Pastor; Austin Road, Bridgewater; Telephone 429-7434; Sunday School 9:15 a.m.; Worship 10:30.

ST. THOMAS LUTHERAN CHURCH—10001 W. Ellsworth Rd., (5miles North and 6-1/2 East of Manchester); Telephone 663-7511; Schedule: Church Service 10:45 Sunday. Bible Class and Sunday School 9:30 a.m.

ZION LUTHERAN CHURCH—Rev. Mark A. Weirauch; 3050 S Fletcher Road; Telephone: Pastor 475-3481, Church Office 475-8064, Susan Wiley, Secretary 428-7268. Sunday School 9am; Worship 10:15am

UNITED METHODIST CHURCHES

MANCHESTER UNITED METHODIST CHURCH—Rev. Marsha Woolley, Pastor; 501 Ann Arbor St. Phone: Parsonage 428-8013, Church 428-8495. Sunday School 9 a.m.; Worship 10:30 a.m.; Coffee/Fellowship 11:30 a.m.

SHARON UNITED METHODIST CHURCH—Rev. Peggy Paige, Pastor, Corner of M-52 and Pleasant Lake Roads; Church- 428-7714, Parsonage- 428-8430; Sunday School 10:00 am; Worship 11:00 a.m.

MORMON CHURCH

CHURCH OF JESUS CHRIST OF LATTER DAY SAINTS (MORMONS)—Samuel Skidmore, Branch Pres; 1330 Freer Rd, Chelsea; 475-1778; Sacrament 9:30 am; Sun. School, 10:40; Relief Soc, Priesthood & Youth 11:40

NON-DENOMINATIONAL CHURCHES

COMMUNITY BIBLE CHURCH — Pastor Jody Riehmiller, meets at the Manchester Middle School in Manchester; Worship 10:00 a.m., Sunday School following, Evening Service 6:00 p.m.

FAITH COMMUNITY CHURCH—Scott Engelman, Pastor, 8400 Sharon Hollow Rd. Telephone 428-8709; Worship Service 10:00 a.m.; Sunday School 11:30 a.m., Sunday Eve Service 6:00 p.m.; LIFELINE 7:30 p.m.

IRON CREEK COMMUNITY CHURCH—Tom Butterfield, Pastor; English and Sharon Hollow Roads; Sunday School 10:00 a.m.; Morning Church 11:00 a.m.; Sunday Evening 7:00 p.m.

CHELSEA FULL GOSPEL CHURCH — John & Sarah Groesser, Pastors; Lima Town Hall 313-475-7379; Sunday 10:15 Prayer, 11:00 Morning Worship, 6:00 Evening Worship; Wednesday 7:00 p.m. Church School, all ages

NEW LIFE CHRISTIAN CENTER — 50 Freer Rd. (Covenant Church); Pastors Erik & Mary Nansen; Sunday 12:30 p.m. Praise, worship, Children's Church, 6 p.m.

CLINTON ASSEMBLY OF GOD—Rev. Richard Coury, Pastor; 13300 Clinton-Manchester Road; Phone 517-456-7510; Sunday School 9:30 a.m.; Worship 10:45; Sunday Eve 6:30; Wednesday Prayer, Bible Study, Youth 7: pm

UNITED CHURCH OF CHRIST

BETHEL UNITED CHURCH OF CHRIST—10425 Bethel Church Road at Schneider Rd.; Phone: Parsonage & Church 428-8000/429-7175; Church Service 9:30 a.m.; Sunday School 10:45 a.m.

EMANUEL UNITED CHURCH OF CHRIST—Rev. Brewster Willcox, Interim, Rev. Nancy Doty, Associate Pastor; Telephone: 428-8359; 9:00 a.m. Sunday School, Worship 10:30 a.m., 11:30 a.m. Coffee & Fellowship

ST. JOHN'S UNITED CHURCH OF CHRIST— Rev. Nancy Doty, Pastor; 12376 Waters Road, Waters and Fletcher Roads, Rogers Corners, ; Worship and Sunday School 9:00 a.m.

UNITY CHURCH

UNITY CHURCH OF JACKSON—3385 Miles Road, Ackerson Lake, Jackson, MI, 517-764-6900; 11:00 a.m. Sunday Services and Sunday School.

EMANUEL UNITED CHURCH OF CHRIST

Wed. June 1: 6:00 Bell Choir, 7:30 pm Adult Choir

Thu. June 2: 12 Noon Senior Meal; 7:30 PM Women of Emanuel

Sun. June 5: 10:30 AM Communion Worship; High School Graduates Honored; 11:30 AM Fellowship Time in Honor of the Graduates

Tue. June 7: 12 Noon Senior Meal

Thu. June 9: 12 Noon Senior Meal; 7:00 PM Board of Deacons; 7:30 PM Missions Committee; C.E. Board

ST. MARY CATHOLIC CHURCH

Sat., June 4: Children's Choir, 3:30-4:45 pm; Sacrament of Penance, 4-4:45 pm

Sun., June 5: Adult Choir, 9:30 and after 10:30 am Mass; Honor 1994 High School Graduates, 8:30 am Mass; Breakfast for graduates and families, after 8:30 am Mass

MANCHESTER UNITED METHODIST CHURCH

WEDNESDAY June 1: 11:30 Willo Circle meet at church to carpool for luncheon 7:30 pm Care & Share

THURSDAY June 2: 5:00 Scout Leaders Meeting; 6:30 pm Youth Bell Choir; 7:30 pm Adult Bell Choir

FRIDAY June 3: 3:15 pm Piano Recital Rehearsal

SUNDAY June 5: 9:00 am Sunday School; 10:30 am Worship - Holy Communion - Graduation - New Member Reception

MONDAY June 6: 7:00 pm Piano Recital

TUESDAY June 7: 5:00 pm Scouts

WEDNESDAY June 8: 7:30 pm Bible Study

UNITY CHURCH OF JACKSON

Each Wednesday: Basics of Meditation 5:00-6:30 - intended for relaxation, stress relief and spiritual growth.

OBITUARIES

CARL A. WALTER

Carl A. Walter, 93, of Saline, formerly of Manchester, passed away on May 26, 1994 at the Saline Evangelical Home.

Carl was born in Manchester on December 5, 1900, the son of Jacob and Margaret (Alber) Walter. Carl was born and raised on the family farm, which he later ran. He was a member of the Washtenaw Farm Bureau and Emanuel United Church of Christ.

Carl is survived by loving cousins Joyce & Lyle Todd of Ann Arbor. He was preceded in death by two brothers and one sister.

Graveside services were held on May 27, 1994 at 2:pm in Oak Grove Cemetery. Pastor Nancy Doty was the officiant.

Arrangements were directed by Jenter-Braun Funeral Home.

AMANDA L. HAEUSSLER

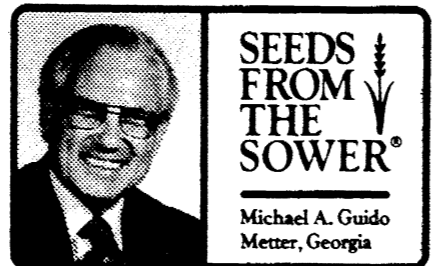
Amanda L. Haeussler, 92, of Manchester, passed away on May 19, 194 at the Saline Evangelical Home.

Amanda was born in Bridgewater Township on July 23, 1901 the daughter of William and Wilhelmina (Dresselhouse) Tirb. On March 4, 1926 she was married to Edwin Haeussler and he preceded her in death on February 23, 1967. Amanda was a member of Emanuel United Church of Christ, and was active in the Women's Guild. She was also a member of the Washtenaw Farm Bureau.

Amanda is survived by one sister in law, Otilla Haeussler of Saline, and several nieces and nephews. She was preceded in death by her husband, five brothers and three sisters.

Amanda's family received callers at the Jenter-Braun Funeral Home on May 22, 1994 from 6-9 pm. Funeral services were held on May 23, 1994 from Emanuel United Church of Christ, with Rev. Nancy Doty officiating. Interment was in Oak Grove Cemetery.

Those wishing to make an expression of sympathy may make memorial contributions to the Emanuel United Church of Christ Organ Fund.



SEEDS FROM THE SOWER
Michael A. Guido
Metter, Georgia

Three men were talking about our faults. The first said, "Here's the trouble with most people, they eat too much."

"It's not how much you eat," said the second, "but what you eat."

"You're both wrong," said the third. "It's what's eating you."

What's eating you - that's worrying. But why worry, when you can pray?

To pray is to acknowledge God's power. To worry is to deny it.

To pray is to reach out to God and accept His help. To worry is to withdraw your hand and reject His help.

Prayer will cancel worry, or worry will cancel prayer.

So, "Don't worry about anything; instead, pray about everything."



Announcements

NOTICE OF PUBLIC HEARING ON INCREASING PROPERTY TAXES

The Village Council of the Village of Manchester will hold a public hearing on a proposed increase of 1.3277 mills in the operating tax millage rate to be levied in 1994/95.

The hearing will be held on Monday, June 6, 1994 at 8:00 p.m. at the Village Hall, 120 S. Clinton Street, Manchester, Michigan.

The action on the proposed additional 1.3277 mills will be taken at this public meeting.

If adopted, the proposed additional millage will increase operating revenues from ad valorem property taxes 11.62% over such revenues generated by levies permitted without holding a hearing. If the proposed additional millage rate is not approved the operating revenue will increase by 4.58% over the preceding year's operating revenue.

The taxing unit publishing this notice, and identified below, has complete authority to establish the number of mills to be levied from within its authorized millage rate.

This notice is published by:
Village of Manchester
120 S. Clinton Street
Manchester, MI 48158
(313) 428-7877

HEARING AND VISION SCREENING FOR CHILDREN

A Hearing and Vision Screening Clinic will be held at the Washtenaw County Public Health Department.

WHO: Children who have not already been screened at daycares or preschools. Children entering Kindergarten in the Fall of 1994 will be done at their schools throughout Washtenaw County.

AGES: Birth to 5 years old.
WHEN: Wednesday June 1st 8:30 - 3:30 Thursday June 9th 8:30 - 6:30

WHERE: Public Health Department 555 Towner Ypsilanti
PHONE: 484-7200 or 971-5790 for an appointment.

AFTERNOONS ARE THE BEST TIME TO MAKE AN APPOINTMENT.

Optimist Tri-Star Baseball

The Manchester Optimist Club will again hold their annual Tri-Star Baseball Contest on Saturday, June 11th; 1:00 pm at Kirk Park. Both boys and girls, ages 8-13, are welcome to compete.

Contestants are scored in running, batting, and throwing, with trophies awarded for the first, second and third places for boys and girls in each age group.

All entrants are welcome to use their own bats. Entry forms are available at Manchester Pharmacy, the Manchester Enterprise, Dr. Bruce Bates' office, or at Kirk Park on the day of the contest. Anyone wishing further information may call Bruce Bates at 428-9616.



GARAGE SALES
See Classifieds page 14

ANOTHER MIRACLE AT CHELSEA COMMUNITY HOSPITAL

The theme for National Hospital Week at Chelsea Community Hospital, "Where Miracles Happen Every Day", took on a new meaning Friday. The miracle of birth for this mallard duck and her 13 ducklings happened here for the second year in a row.

Last year and again this year, the "expecting" mallard drake and hen flew into a courtyard at the Hospital. They apparently remembered the safe haven, and that the helpful staff would lead them out; new-born ducks must reach water within 48 hours after birth to survive. So, being accustomed to life-threatening situations, normal activities were preempted while a team of caregivers sprang into action.

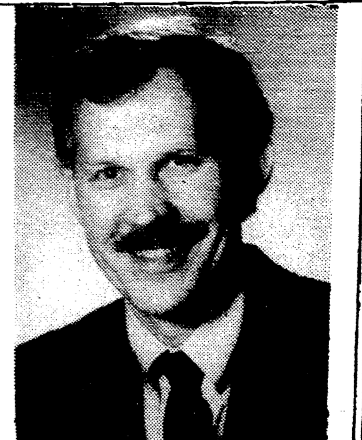
A corridor was improvised by laying tables on their sides and employees standing side by side. The route lead from the courtyard, crossing a hallway, through an elevator (that opens on both sides), over the loading dock and outside. From there, instincts took over and the new family went waddling and quacking directly and rapidly to a nearby creek; the entire voyage took less than 5 minutes. The Staff, having successfully dealt with the emergency, went back to their "where miracles happen every day" jobs.

ORTHODONTIST

RAYMOND P. HOWE
D.D.S., M.S.

515 S. Main Street
Chelsea

Telephone
(313) 475-2260



PREMIER CONTRACTING INC.

Full Service Residential Building & Remodeling
"Let us help you with your building plans"



Lots Currently Available

Ron Milkey
(313) 428-9826

Reinhart

Charles Reinhart Company Realtors

DEBORAH ENGELBERT Off: 313/971-6070
Sales Associate Res: 313/475-8303
22 MILLION IN SALES Fax: 313/747-7880

2452 East Stadium Blvd. Ann Arbor, MI 48104



FUND RAISING

Manchester Sportsman Club
8501 Grossman Rd.
Friday 6:45 p.m.

Manchester American Legion
203 South Adrian
Saturday, 7:00 p.m.

When luck runs out on your major appliances,

call us for expert repair service. With an expanded staff, we're ready to meet your needs with same-day or next-day service.

Call us at
428-8243

ME MANCHESTER ELECTRIC

200 Riverside Drive
Manchester
Our 18th Year

SELECT HOMES OF JACKSON, INC.

3570 Ann Arbor Rd. - Jackson

Mon & Wed 10-6, Tues & Thurs 10-8 Fri & Sat 10-5
(517) 764 - 6670

- Singles - over 60 floor plans
- Doubles & Modulars - over 100 floor plans
- HUD - BOCA - Drywall
- Cape Cods - Two Stories - Ranch
- 4 different Manufacturers
- Several different financing sources: as low as 8%
- Land packages available
- 12+ units in stock to choose from!!

We feature homes by Crest - Carrollton - Schult - Liberty and Experienced Service Department

You can be a HOMEOWNER!

See SELECT HOMES OF JACKSON TODAY!!



THE CHURCH PAGE IS BROUGHT TO YOU THROUGH THE FOLLOWING SPONSORS

Reno & Nancy Feldkamp	DAN'S WESTSIDE AUTOMOTIVE	David Chartrand	WACKER'S GENERAL STORE	Keith's Barber Shop
Pilot Metal Products A Division of Pilot Industries		MANCHESTER KIWANIS	MANCHESTER CAR WASH	Manchester Automotive
Dr. Charles Lyon, D.O.	ALBERS ORCHARDS	You Owe It To Yourself... To choose a quality retirement.	Hendley & Datsko, PC Attorneys at Law	MANCHESTER TOOL & DIE
Manchester Plastics	Norm & Olga Walz	Brooklyn Living Center 151 Constitution Avenue 592-2828 Canton Retirement Centers Inc.	S-K Sales, Inc.	Manchester Chiropractic Clinic
		KLEINSCHMIDT True Value Hardware		HAARER'S MEETING PLACE
	MANCHESTER MANOR	THE MANCHESTER ENTERPRISE	GENE & GERTRUDE SMITH PINNACLE ENGINEERING	

Drop by Saturday. See Arnold Schwarzenegger.

Get one free movie rental or video membership (\$3 value)* to Movieland of Manchester when you come by on Saturday. Offer's good anytime in June during our new Saturday lobby hours from 9am to noon.

Great Lakes Bancorp:
111 E. Main St.....(313) 428-8379
Movieland of Manchester:
230 E. Main St.....(313) 428-8840

*Limit one voucher per Movieland of Manchester member. Vouchers can be redeemed anytime before the end of June.



Features

If not the consortium ... then what?

We can do more ... It will cost less...
It's just that simple.

(The following article, by Mr. Paul Kluge, was presented to the Manchester Board of Education at their May 16th meeting for discussion and consideration.)

"There is a great concern about consortium costs. Aside from many costs that are not obvious, Manchester spends, by my estimation, at least \$140,000.00 per year on this program. With 51 students enrolled in classes, this comes out to \$2,745.00 per student per year for one class. The Manchester district averages spending \$829.00 per student per year for one class - hour. In addition, the administrative overhead of the consortium is substantially higher than the Manchester average.

What else could we do for \$2,745.00 per student? Well, for starters, we could pay all or nearly all tuition costs for a two year degree program at a county community college. This thought should bring the issue of consortium costs into more clear focus. Furthermore, it leads to phase one of a new program that provides greater opportunity for ALL of our students.

Phase One of our new program could start out like this:

1. Offer to pay all tuition costs for one (or two) classes at a county community college (or ultimately other schools) for every student. These classes must be taken during the summer after their Junior or Senior year, or during the regular school

year of their Senior year.
2. For transportation, the classes may be taken during the regular school year with the understanding that the student will provide their own transportation. For summer classes, we could provide a bus running two times per school day.

What would this cost? With a class size of 80 students (if they all participate, which we should encourage) and two classes of three credit hours at \$47.00 per credit hour, the total cost exclusive of transportation would be \$22,560.00. If we even purchase all textbooks, the total cost would be around \$25,000.00. This would give ALL of our students a HUGE selection of classes and also give them transferable college credits. Last but not least, we could save \$100,000.00 or so.

Imagine our new vision of the future: don't just say we prepare our students for college, but prove it by giving them college credits. Our schools urgently need to form new alliances and affinities with a diverse array of organizations. This is our first step to that future."

Mr. Kluge worded a motion about the consortium agreement for the boards con-

sideration. In essence the motion stated; "Do you favor withdrawing from the consortium", Board Secretary, Bruce C. Abbott, informed the Enterprise; "That the vote was 4 to 3 against immediately withdrawing from the consortium. No decision has been made concerning entering into the 5 - year contract to

continue with the consortium, however, a decision must be made soon." (See letters to the Editor)

Superintendent Niedzwiecki has the consortium issue under review and will be sharing that information after it has been gathered.



20735 Logan Road
Beautiful brick home w/ walk out L/L, located on 10.01 acres. Large pole barn w/ cement fl. 5 min. S. of Manchester for schools and shopping + attached 2C. garage. Wrap around decks. Call Helen B. Drysdale for more info. 428 - 9179 or Real Estate One. 995 - 1616

Hours
Sunday 1 a.m. - 11 p.m. Monday -
Thursday 11 a.m. - 11 p.m.
Friday & Saturday 11 a.m. - 1 a.m.



138 E. Main St
428 - 6543

⇨ **FAST** ⇨ **FREE** ⇨ **FRIENDLY DELIVERY**

in the whole 48158 area

FAMILY FEAST

Two to choose from

2 MEDIUM Pizzas with 1 topping of your choice*
1 Large Oli bread with sauce
3 - 32oz. Pops
\$12⁹⁹ plus tax

*excludes extra cheese

2 LARGE Pizzas with 1 topping of your choice*
1 Large Oli bread with sauce
3 - 32oz.. Pops
\$15⁹⁹ plus tax

extra toppings available at add'l charge

NEW ITEM

10 pc. HOT WINGS -

Chicken "wings of fire" seasoned with a hot spicy sauce and oven baked

NEW ITEM
12" ROAST BEEF SUB -

Thinly sliced roast beef piled high with cheddar and mozzarella cheese, onions, lettuce, tomato, and mayonnaise and served on a freshly baked sub bun.

Purchase LARGE Pizza with minimum of 2 toppings at regular price
Receive 10 PC. Hot Wings FREE

Coupons Good thru 6/8/94

People

Navy Hometown News

Navy Fireman Apprentice Gary R. Barrett, son of Gary C. and Ada L. Barrett of 11224 Hieber Road, Manchester, Mich., recently graduated from the Gas Turbine Systems Technician Mechanics Course. During the course at Navy Service School Command, Great Lakes, Ill., students receive training in the operation and maintenance of hydraulic gas turbines.

CRC and Kiwanis Honor an Outstanding Volunteer

LORRAINE MAHRLE has been an active member of the Kiwanis Club of Manchester for 4 years. She is a member of the Board of Directors, Scrapbook chairman and Food Wagon volunteer. Lorraine rings bells for Salvation Army and picks up trash for the Adopt-a-Highway program and she participated in the Manchester High School Rock-a-thon.

Lorraine also volunteers for the American Red Cross, Manchester Unit and has been part of the organizing committee for local blood banks for 6 years. She is a member of the Emanuel United Church of Christ and has served on the Deacon's committee for four years and is presently co-chair, served on the Search Committee for an interim pastor and has taught Sunday School for 25 years. Lorraine volunteers for Senior citizen meal program and has been chairman of the Christmas Bread Committee for four years.

Outstanding Volunteers Honored by Girl Scouts



Sherry Barker & Marikay Kennedy

At the Annual Recognition Dinner of the Huron Valley Girl Scout Council, Sherry Barker and Marikay Kennedy of Manchester received the Green Tree award for their commitment to education, self-development and an appreciation for the out-of-doors. Central to their troop activities has been an emphasis on a well rounded program that includes service for girls.

Both women have served as leaders, creators of a Tot Lot program for Day Camp and Co-Chairs of their areas Day Camp. They are also certified to teach outdoor skills to other volunteers in the Council.

The Huron Valley Girl Scout Council is one of 331 councils chartered by the Girl Scouts of the U.S.A. and is charged with the responsibility of administering Girl Scouting in western Wayne Monroe, Washtenaw and Livingston counties. Its membership consists of over 4,000 adult members and serves over 13,000 girl members.

new arrivals

Allison Leigh Tucker Robert and Cheryl Tucker of 8881 Smythe Road announce the birth of their daughter, Allison Leigh, on Sunday, May 22 at St. Joseph Mercy Hospital, Ann Arbor. Allison weighed 7 pound, eleven ounces and was 21 inches long.

Allison has a sister, Rachel, at home.

SUBSCRIBE TO The Manchester Enterprise

Keep up with the weekly Community News

Washtenaw County - \$15/yr. Outside Washtenaw - \$18/yr.

NAME:

ADDRESS:

CITY/STATE/ZIP:

Stop by at 109 E. Main or call us at 428-8173

OPEN HOUSE and "Going in the NAVY" Party Sat. June 11th Jason Gehringer Graduating At 421 Territorial Come by & see your teammate

Senior Citizens

MANCHESTER AREA SENIOR CITIZENS News

by T.V. Ludwick

What a nasty shock the plants and humans received with the frost on the ground on Friday morning. Enough to give us a headache with wind and cold temps. From the funnies again: Secretary says to DUFFY: "Sorting this account is going to be a major headache for somebody". He stated: "Migraine or yours?" First thing I read in the paper, how about you? When we were young, we read and listened to the radio and imagined! Kids nowadays have great imaginations, too, except that pictures are everywhere. Does it leave little for their minds to conjure up pictures? We wonder and are acquainted with a lot of good kids who can separate grain from chaff.

Thursday, June 2: Birth-time for all you who born in June and July at senior lunch in Emanuel's dining room. Call Jan at 428-7630 before 10:30 for reservations. Ham is featured with bingo to follow festivities.

Monday, June 6: Shopping fans will board the senior bus at the Center at 9:30

headed for Adrian. Call Erma Alber at 428-8707 to go along. Tuesday, June 7: Note change of date to today for Senior Citizens Council Meeting beginning at 9:30. Then, come to the meal based on turkey tetrazini at Emanuel. You may call Linda ahead (before noon) for your lunch reservation. At 12:30, work begins on the July-August calendar at the Center. Come with your ideas! There will a slowdown of activities after this week and you can bring ideas to "busy" us a little.

Wednesday, June 8: The bus leaves the Center at 9:00 for a tour of Davisburg Candle Factory which will begin at 11. Sounds like fun, want to go? Call Erma to be placed on the list.

Thursday, June 9: LAST DINNER! And our dear Jan and crew will again surprise us with Chef's Choice. We will all have long faces when our turn to cook on Tuesday and Thursday noons come once again. We will miss your words of wisdom, your wit, and most of all, your fine food. Have a good summer to all.

A SPECIAL WAY TO SAY Happy Father's Day

STAY INDEPENDENT AT Brooklyn Living Center

- DELICIOUS MEALS • TRANSPORTATION HOUSEKEEPING • ACTIVITIES & COMPANIONSHIP LINEN LAUNDRY • 24 HOUR STAFF

151 Constitution Avenue, Brooklyn, MI 49230

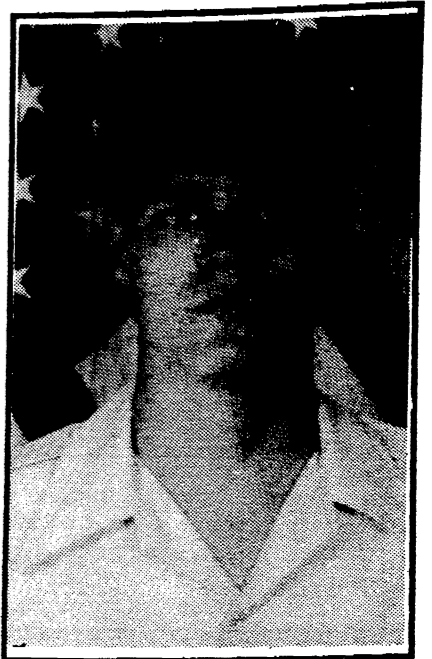
592-2828

Anton Retirement Centers Inc.

Bruce A. Bates D.D.S. 500 Galloway Drive, Manchester, Michigan (313) 428-8277

Complete Family Dentistry Adults & Children Always Welcome as New Patients. We Accept Dental Insurance VISA • MasterCard • Discover Payment Plans Available Gentle Dental Care Relaxing Gas Available Upon Request

Air Force Hometown News

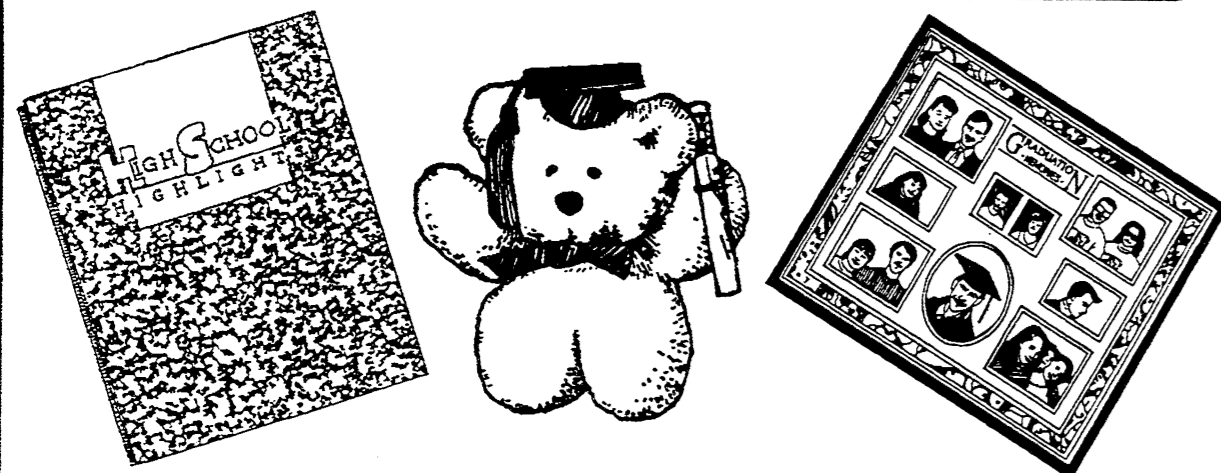


Air Force Airman Steven L. Cummings has graduated from Air Force Basic Training at Lackland Air Force Base in San Antonio, Texas.

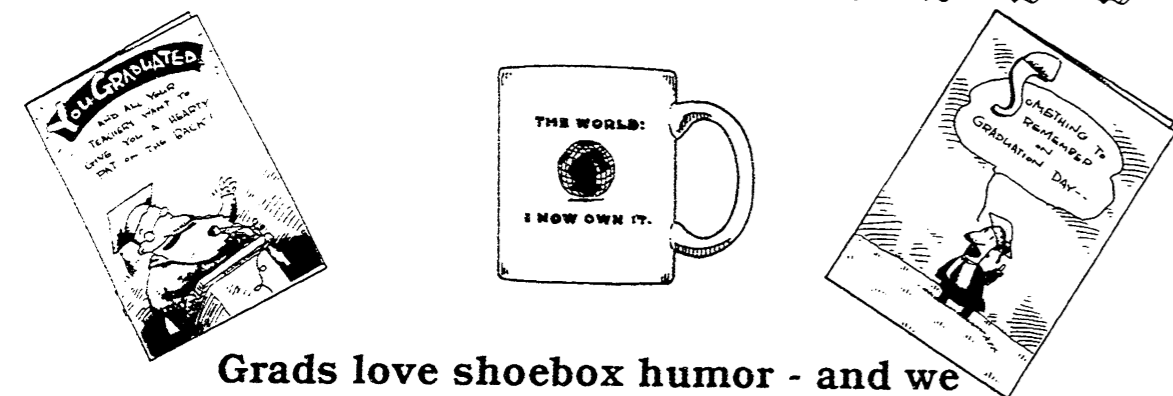
During the six weeks of training the airman studied the Air Force mission, organization and customs and received special training in human relations. In addition, airmen who complete basic training earn credits toward an associate degree through the Community College of the Air Force.

Cummings is the son of Lee G. Cummings of 2614 Excalibur Ave., Huntsville, Alabama. He is the nephew of Betty Cummings of Manchester. Cummings is a 1993 graduate of Hazel Green High School in Alabama.

We have Great Gifts for the GRADS of '94



Help your Grad cherish their memories forever, with these unique gifts from Hallmark



Grads love shoebox humor - and we have many cards and gifts they'll appreciate. Come in and get your gifts while the selection is good!!

Manchester Pharmacy 128 E. Main 428-8393 Mon-Fri 9-6:30 Sat 9-5

FOX TENT AND AWNING CO. ATTENTION VACATIONERS! We Make Replacement Tops for Tent Campers

WOODS WOODS WOODS New generation of rear-mount mowers for the 90's involve the exchange of 20 years of engineering, manufacturing and marketing experience into exceptional quality, dependability and service at a very competitive price!

DIUBLE FEEDS, INC. 4441 S. Parker Rd., Ann Arbor 994-1313 Minutes from Manchester Sales • Service • Parts

Over 40 years of service UNDERWOOD'S 4373 N. Adrian Hwy. Adrian, Mi. 49221 Lawn Care • Tree Care • Nusery • Landscaping

JOIN US FOR A SPRING OPEN HOUSE Saturday, June 4 9 a.m. - 5 p.m.

Take advantage of our one-day-only specials and see our showroom and selection we have for you!

UNILOCK PAVING STONE AND RETAINING WALLS DO-IT-YOURSELF SEMINAR • 10 A.M. 10% OFF ALL PAVING SUPPLIES See A "Hands-On" Demonstration, A Unilock Factory Representative will be on hand to answer any questions.

25% OFF* ALL Large Shade Trees, Flowering Trees, All Plants, Perennials, Ground Covers, Large Spruce, Pines and Firs, etc.

*Applies to all Saturday purchases only. Cash, check, Visa, Mastercard, and Discover

CANT COME SATURDAY? WE WILL EXTEND OUR SALE PRICES TO SUNDAY, JUNE 5TH, IF YOU NOTIFY US IN ADVANCE BY MAIL OR PHONE.

Check Here I'd like to stop in and buy at your sale prices on Sunday, June 5th. Name Address Phone

OR CALL US BEFORE SATURDAY AT 265-2481 OR 1-800-841-8873 and reserve your order at 25% OFF for Sunday.

Business or Pleasure We have a Rental Plan to fit Your Needs Taurus Sedans • Vans • Trucks New - Clean - Smoke Free MIDWEST FORD RENT-A-CAR 428-8343 RENT-A-TRUCK

STEIN ELECTRIC COMPANY, INC. Licensed & Insured Contractor 24 Hour Emergency Service Motor Controls & Lighting Ag. • Commercial • Industrial Institutional • Residential Backhoe & Trenching Services 50 ft. Bucket Truck (313) 428-9050 Rick Graustein • Manchester, MI

Schools

School Employee Recognition

School Lunch Menu

Monday, June 6: Chicken Patty on Bun; Hash Brown patty; Dill pickles; peach half; milk.
 Tuesday, June 7: Boneless Rib-B-Q; Bagelette & Butter; Mashed Potatoes & Gravy; Green Beans; Fruit Cocktail; milk.
 Wednesday, June 8: Potpourri Day
 Thursday, June 9: Potpourri Day
 Friday, June 10: Cottage Inn Pizza; tossed salad/dressing; fresh fruit; milk.



Charlene Goodell, ten year recognition



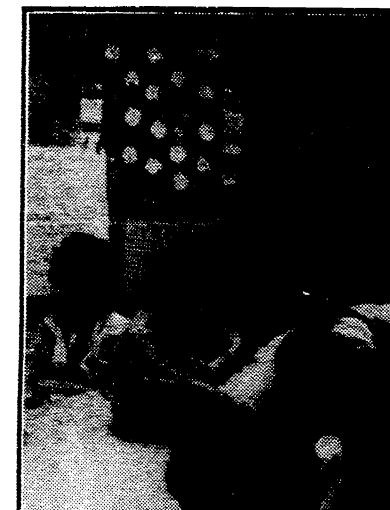
Sandra Sheats, fifteen year recognition



Peggy Townsend, twenty-five year recognition



Sherri Hankamp, twenty five year recognition



Mrs. Carolyn Supers' kindergarteners met "Miss U" on Monday, May 23, and made "upside-down sundaes" as well as "unusual umbrellas". Pictured above, from left: Ashley Donahue, Matthew Fusilier, and Michael Goodart (using the eggbeater). Mrs. Supers reports that the students love meeting their "letter people" as part of the kindergarten program.

The Manchester Community Schools' Board of Education held their special meeting for Employee Recognition on Monday, May 16, 1994. Employees were shown appreciation for their contributions to the students and the schools by presentation of awards by Superintendent Ronald Niedzwiecki.

Ten year recognition went to Charlene Goodell, Middle School Secretary. Fifteen year recognitions were presented to Chris Honer, Middle School Librarian; Frances "Kay" Schook, Klager paraprofessional; Doreen "Polly" Brokaw, Food Services; Diane Lockridge, Food Services; Sandra Smith, Food Services; Gay Perry, Middle School Science; Sandra Sheats, Klager Physical Education; Karen Ellsworth, Klager Fourth Grade teacher.

Helen Nickerson, Klager Secretary was recognized as a seventeen-year employee. Twenty five year recognition were presented to Sharon Hankamp, Kindergarten teacher, and Peggy Townsend, bus driver.

When you run into one of these folks - Tell them thanks for all the years of dedication - They probably touched one of your children through the years!!

School Board Candidate Profiles

Joe Turk
 Do you feel that our taxpayers are over burdened? No one wants to pay taxes, including me. Decisions made by the Federal and State Government and about our economy influences the type of service we receive and what we must pay for them. In terms of Manchester Schools, I am proud of how we have spent our money. We do not have lavish facilities as in some districts I have visited. We do not have extravagant course offerings as in other districts. These items do not guarantee quality education. I believe we can be proud of our schools and the continuous improvements made over the past years. The MEAP test scores are just one example of what can be achieved by working together.

What do you feel should be the role of the school board in the community? The School Board plays several key roles. First, the board must set overall direction and policy for the District. Continuous improvement in curriculum is particularly important. Second, the Board provides oversight duties of the District's operation.

Mike Gleason
 Do you feel that our taxpayers are over burdened? Yes, I do. Our school taxes have skyrocketed. The quality of our education has not. Proposal 'A' was not a tax break, and we are not likely to get a tax break until we stop spending so much money. The worst part of this problem is that the money doesn't seem to 'trickle down' to benefit the students. When we vote no on a millage, our academics, sports, arts and everything that the students directly use are threatened. When we vote yes to the millage, we get more administration. Our administrators get 6% (sometimes 10 or 15%) raises, annuities, and air conditioning, yet they're quick to tell us 'vote yes - for the kids'.

The burden that Manchester area people bear for education is the direct responsibility of the school board. We need to think about that burden before we cover another good floor with expensive carpet. Many of our townspeople can't afford new carpets for themselves. They're paying too much school tax.

What do you feel should be the role of the school board in the community? I feel that the role of the school board

should be: 1. To set policies that promote the highest quality education for our children at an affordable price. 2. To provide a link between our schools and the community. 3. To insure that our students, taxpayers, parents, teachers, and administrators are treated fairly and openly.

Pat Sahakian
 Do you feel that our taxpayers are over burdened? Property taxpayers were over burdened and should see immediate relief from a 31.5 mill decrease on local homesteads in the Manchester School District.

What do you feel should be the role of the School Board in the community? In a larger sense the school board's role to set the tone of the community schools, to be advocates for our children and the future of our community. The functional role of the board is to establish community based goals, hire good people to manage the day to day operation of the system, approve the district budget and act as a court of last resort for students or community members who have unsolved frustrations within the system.

Sonja Schulz
 Do you feel that our taxpayers are over burdened? Yes, we can all only stretch so much. We have reached our limit.

What do you feel should be the role of the school board in the community? The School Board should cooperate with the community. Be open and honest with the community. If there are problems, tell us. There are a lot of people who are willing to lend a hand in solving them. The goal should be supporting and assisting our children together.

Subscribe to The Manchester Enterprise

Keep up with the Weekly Community News
 Washtenaw County \$15/year; Out of County \$18/year.
 Stop by at 102 E. Main or call 428-8173

Your Independent Agent Goes All Out For You.

Auto-Owners Insurance selects its agents the same way you do - carefully! That's why you can always count on quality protection and service from your Auto-Owners agent. Because our agents also represent other fine companies, they will take the time to tailor the best protection for your needs.



SUTTON AGENCY
 Connie Widmayer, Agent
 136 E. Main 428-9737

Auto-Owners Insurance
 Life Home Car Business
 The No Problem People

Spring Sports Recognition Night

On June 6, 1994, at 7:00 pm, the 1994 Spring Sports Recognition Night will be held in the High School Gym.

Athletic Director, Dave Swanson, invites all parents and interested community members to attend.

Commencement Exercises will be held on Sunday, June 5, 1994 at 2:00 pm Athletic Field
 Congratulations to the Class of 1994!

Kirk Excavating
 Sand - Gravel - Fill Dirt
 Basements - Driveways
 Licensed & Insured
428-7938
 Dave Kirk
 14180 Schlewels Road
 Manchester

KEITH'S BARBER SHOP
428-8584
 Now Open
 Tuesday & Wednesday
 nights 'til 7:00 pm

Faist-Morrow
 the place to go for new or used vehicles
 "Where the QUALITY Used Cars Are"
 1500 S. Main St.
 Chelsea
475-8663

School

ANNUAL SCHOOL ELECTION

NOTICE OF ANNUAL ELECTION OF THE ELECTORS OF MANCHESTER COMMUNITY SCHOOLS WASHTENAW AND JACKSON COUNTIES, MICHIGAN TO BE HELD JUNE 13, 1994

TO THE ELECTORS OF THE SCHOOL DISTRICT:

Please Take Notice that the annual election of the school district will be held on Monday, June 13, 1994.

THE POLLS OF ELECTION WILL OPEN AT 7 O'CLOCK IN THE MORNING AND CLOSE AT 8 O'CLOCK IN THE EVENING.

At the annual school election there will be elected two (2) member(s) of four (4) years ending in 1998.

THE FOLLOWING PERSONS HAVE BEEN NOMINATED TO FILL SUCH VACANCY(IES).

Michael Gleason
 Patricia Sahakian
 Sonja M. Schulz
 Joseph Turk

TAKE FURTHER NOTICE THAT the following proposition(s) will be submitted to the vote of the electors at the annual school election:

OPERATING MILLAGE PROPOSITION NON-HOMESTEAD PROPERTY TAX

The millage will allow the school district to levy not more than the statutory rate of 18 mills against non-homestead property required for the school district to receive its revenue per pupil foundation guarantee.

Shall the limitation on the amount of taxes which may be assessed against all property, excepting therefrom homestead property as defined by law, in Manchester, Michigan, be increased by 18 mills (\$18.00 on each \$1,000.00) on state equalized valuation for a period of 10 years, 1994 to 2003, inclusive, to provide funds for operating purposes; the estimate of the revenue the school district will collect if the millage is approved and levied in the 1994 calendar year is approximately \$869,018.00 from local property taxes authorized herein?

THE VOTING PLACE(S) ARE AS FOLLOWS:

PRECINCT NO. 1

Voting Place: Manchester High School Building, in the Village of Manchester, Michigan.

All school electors who are registered with the city or township clerk of the city or township in which they reside are eligible to vote at this election.

COUNTY TREASURER'S STATEMENT

I, Nancy L. Davis, County Treasurer of the County of Washtenaw, State of Michigan, do hereby certify that according to MCLA 211.203 Sec. 3 (2), and the records of this Office, as of May 8, 1994, the total of all voted increases over and above the tax voted limitation established by the Constitution of the State of Michigan in local units of government affecting the taxable property in Washtenaw County, State of Michigan, in said County is as follows:

REQUESTING UNIT:	2025 Mill	1988 & Future
County of Washtenaw	0.25 Mill	1988 - 1996 Incl. 1993 - 1995
Wadsworth Township	NONE	
Freedom Township	NONE	
Manchester Township	1.25 Mill 0.50 Mill	1987 - 1995 1989 - 1998
Sharon Township	NONE	
Washtenaw Community College	1.25 Mills 0.70 Mill	1986 & Future 1987 & Future
Washtenaw Intermediate School Dist.	1.50 Mill 0.50 Mill 1.50 Mills	1985 & Future 1988 & Future 1987 & Future
Manchester Community Schools	1.4308 Mills	1994 - 1997

DATED: May 8, 1994
 Ann Arbor, Michigan

Kenneth R. Schwartz
 Chief Deputy
 Washtenaw County Treasurer

This Notice is given by the order of the board of education.

I, Janet C. Rochefort, Treasurer of Jackson County, Michigan, hereby certify that as of April 19, 1994, the records of this office indicate that the total of all voted increases over and above the tax limitation established by the Constitution of Michigan, in any local units of government affecting the taxable property located in Manchester Community Schools, Washtenaw and Jackson Counties, Michigan, is as follows:

By Jackson County:	NONE
By Norvell Township:	NONE (will renew in June 1994)
By Grass Lake Township:	1 Mill 1994
By Jackson Community College	1.50 Mills 1993 Unlimited
By Jackson County/Library purposes only	1 Mill 1994-1996 Incl.
By Jackson County/Medical Care Facility purposes only	1 Mill 1994
By the School District:	1.4308 Mills, 1994 to 1997, incl.

Date: April 19, 1994
 Treasurer, Jackson County

BRUCE C. ABBOTT
 Secretary, board of Education

CLASSIFIEDS

SERVICES
Michigan Peat Sales: Black dirt for sale \$15 a yard delivered. Fast delivery. 428-9664 tfn
Lost or Found a Pet? Call the Huron Valley Humane Society. 662-5585. tfn
Fielder Painting: Interior and exterior. Free estimates. Senior citizen discount. Phone 428-8506 tfn
Black Dirt For Sale: By the pickup load or delivered. Dozer and backhoe work also available. 428-9265. tfn
Benedict Painting: Call Chuck for free estimates. 15 years experience — interior & exterior painting. 517-536-4812. 12/94/pd
Excavating: Sand, gravel, backhoe and bulldozing. Reasonable rates. 428-9265 tfn
Little Wack Excavating: Basements. Drainfields. Bulldozing. Black Dirt. Topsoil. Sand. Gravel. Ponds. Snow Removal. Salting. Paul W. Wackenhut 313-475-8526. 6/94/pd
Maintenance Unlimited: Seamless Gutters, roofing, siding, interior and exterior remodeling. FREE ESTIMATES 517-263-7371 3/3-4/21p, tfn
Farmers' Sand and Gravel. We deliver and spread driveways. 475-8850 tfn
Alber Excavating: Basements, drainfields, driveways, top soil, black dirt, gravel, sand & snow removal. Steve Alber 517-536-8257 or 428-8636. 6/94p
Piano Tuning and Repairs: Qualified Technician since 1977. Ronald Harris, 475-7134 12-16/6-30pd
Wallpaper hanging/stripping •Quality Wallpapers •Coordinated fabrics & bedding •Decorating consults •Antiques, buying & selling •Furniture and accessory arranging "MY SISTER'S HOUSE", Juli Trolz 428-7117. tfn
Paint Crafter's Ltd. 313-429-3880 Drywall Plaster Repair •Power Washing •Woodstaining •Deck Refinishing •Minor Carpentry •Free Estimates •Licensed •Insured •Jeff Stone Owner 5/5-6/30
House Cleaning - 7 years experience. Reliable, efficient. Available Wednesday's. Weekly or bi-weekly. Call Monica at 517-536-0076 any time. 6/2/9
Live Harp Music for any occasion. Flute also available. Call 663-9292 or 930-2763 8/31

HELP WANTED
Chelsea Big Boy- All positions available. Apply in person. 475-8603. 1610 S. Main, Chelsea. 5/13 tfn
50 FACTORY JOBS Apply for immediate openings in Manchester. If you have reliable transportation, a phone in your home, and are at least 18 years old - Call today for an appointment. ADIA 428-2800
MANPOWER More work than workers, that's our problem. Can you help? Call (313) 665-3757. The number for employment in Western Washtenaw County. 5/19-6/1
Help Wanted: Cashier's 2nd & 3rd Shifts. Full time or part time. Must be over 18 years old. Apply in person tp Patty at the Hop-In. 6/2
Summer Help Wanted: AM-PM, Weekends. Apply in person. Bakers Dozen. 6/16
GRADUATING STUDENTS Are you looking for summer work or temporary to permanent positions in the local area? We offer: •General Labor •Light Industrial •General Office Contact Performance Personnel Independence Plaza, 3A, 5060 Jackson Ave, Ann Arbor (located between Zeeb and Warner Roads, 1/4 mile east of Zeeb Road Exit) 668-6933 5/26-6/9
Part - Time Teachers / Assistants, needed at Little Dutch Child Care Center. Must have experience planning developmentally appropriate activities for children 1 - 12 years. Contact Director at 428-8988 5/19-6/2
VARSITY VOLLEYBALL COACH - playing and coaching experience required in volleyball. HIGH SCHOOL CHEERLEADING ADVISOR - Cheerleading and coaching experience preferred. Apply to: Mr. Dave Swanson, Director, Student Services and Athletics; Manchester High School; 710 East Main Street; Manchester, MI 48158 6/2/9
Part time help wanted. Cleaning offices. Will Train. Monday - Friday, 6PM - 10PM. \$5.00 per hour. If interested, call 428-7236, Tuesday - Thursday, 9AM - 4 PM 6/2/9
Cashiers and Stock people wanted. Permanent, Part time positions. Apply in person. WALCO Foods, Manchester

CHILD CARE
COME LEARN WITH US Montessori Pre School invites you to come and visit any weekday 8:30 - 11:00. Please bring your preschooler and have some fun. 1987 W. Michigan Ave. Clinton Mich. 1-517-456-7646 5/19-6/2
Summer & Fall Child Care openings available for children 2 1/2 years - 12 years. (Toddler openings will be available in August) Contact Little Dutch Child Care Center for program information. 428-8988 tfn
CHILD CARE NEEDED For summer, June 16 - August 26, 8 & 10 year old to be supervised in their village home. Must be a strong swimmer. Please call 428-2414 (Day) or 428-1220 (evenings) for appointment. References Required. 6/2
Christian mom has 3 openings for home day care for fall. Loving, creative environment in which your child can explore and learn. Daily activities include: indoor and outdoor play, arts and crafts, story time and much more. Nutritious lunch and snack provided. Competitive rates. License pending. Please call Mary: 428-7779

FOR RENT
Beautiful Loft Apt. Downtown Manchester. 1 Bedroom S520 / mo, 2 Bedroom S565 / mo. Call 517-431-2008 5/19-6/23
Apartments For Rent. 2 - 2 Bedroom Apts. Norvel 1 Block from lake. Lower unit \$425 + Utilities and deposit. Upper unit large 2 bedroom with diningroom. \$450 plus utilities and deposit. No Pets, No Smokers. References, 517-423-4941 tfn
1 Bedroom Upstairs Apartment, S280/Month- You pay utilities (313) 428-9150 tfn
For Rent Furnished Efficiency 428-9202
For Rent - 2 Bedroom Apt. in Village, w/laundry facilities, \$440/month. Call 428-8163 6/2
For Rent: 2nd Floor, Main Street., 1 Bedroom, AC, Dishwasher, Disposal, Water & Trash Pickup included. Call 428-9269. Available July 1 6/16 bill
Garage Sale; 13720 E. Austin Rd. Manchester. Sat. Only! June 4, 9:30 - 5:00

GARAGE SALE'S
Make money before your sale! Let us preview your merchandise for any hidden treasures. We buy outright or consign. Fair market values given. Call 428-7117 or 428-9235 anytime. 6/15
Multi-Family yard sale 406 & 409 Territorial Fri 6/3 & Sat 6/4, 9-?; Something for everyone. Don't miss it!
40 FAMILIES, Fri 6/3, 9-3, Sat 6/4, 9 -Noon. 405 Barber, Ann Arbor. (Dexter to Barber, between N. Maple & Wagner) Childrens Clothes & toys, lots of Misc. Fresh Baked Goods.
Garage Sale; 13720 E. Austin Rd. Manchester. Sat. Only! June 4, 9:30 - 5:00

REAL ESTATE
Manufactured Homes; In lovely new rural Manchester Manor Park: Champlain 1993 - 28' X 64' 3 bedroom, 2 bath, jacuzzi, fireplace, energy efficient. Finished drywall, solid wood doors and cabinets. Price reduced \$47,500. 428-9644 5/26-6/9
1.5 Story 2 Bedroom, 1 Bath with Formal Dining Room and 2 1/2 car Attached Garage in Village. or
1.5 Story, 2 Bedroom 1 Bath with Family Room and 1 1/2 Car Detached Garage in Village. ACCLAIM RESIDENTIAL MARKETING, INC. 313-677-2222 or 313-677-5753 ask for Lois. 6/9
House for Sale; Nice large 3 Bedroom, 2 Bath, 2 car garage, Rec room. S70's. Land Contract, 8%, 30 years. Choice Investment. 616-392-3350 6/9
IN MANCHESTER TOWNSHIP! Three bedroom ranch with two full baths, Living room with fireplace. Large kitchen with eating area. Full basement and partially fenced back yard. Manchester Schools, \$97,500. CALL RICHARD ABRAHAM (517) 265-9211. ABRAHAM-LINEHAN REALTY, INC. 1893 W. MAUMEE STREET ADRIAN, MI 49221, 95170 265-2164 6/2
WANTED TO BUY - Farm 50-250+ acres, \$100K+ cash down, Land Contract with good terms. Call 313 697-0841 6/23

REAL ESTATE
In Loving Memory of Henry Sokolowski who passed away June 7, 1983
LEGAL
STATE OF MICHIGAN, PROBATE COURT, COUNTY OF WASHTENAW. CLAIMS NOTICE. Independent Probate. FILE NO. 94 - 104,382-IE. Estate of HELENA, YOUNG, DECEASED, 370-03-3405
TO ALL INTERESTED PERSONS: Your interest in the estate may be barred or affected by the following: The decedent, whose last known address was 2317 M-52, Chelsea, MI 48118 died April 16, 1994. Creditors of the deceased are notified that all claims against the estate will be forever barred unless presented to the independent personal representative, JEAN M. HAARER, 6350 Lake Drive, Haslett, MI 48840, or to both the personal representative and the Washtenaw County Probate Court, PO Box 8645, Ann Arbor, Michigan 48107, within 4 months of the date of publication of this notice. Notice is further given that the estate will be thereafter assigned and distributed to the persons entitled to it.
KEUSCH AND FLINTOFT, P.C. Attorneys for the Estate BY: JOHN P. KEUSCH 119 S. Main Street, PO Box 187, Chelsea MI, 48118, 313/475-8671.

MISC. FOR SALE
McCulloch Saws- Earl Alber 313-428-8707 tfn
New Idea onerow corn picker. Good Shape. Heavy duty wood splitter. Has running lights brake and turn signals. Log lift. 15" tires made to last \$2250 428-7602 6/2
Pork for your pig roast or your freezer. Call now 428-0092 6/30
Books - Books - Books, Cookbooks, Hardcover and Church Cookbooks \$1.00, 100's of others 25¢ each. 503 Furnace. Everyday 6/9
Schebor's Greenhouse. Bedding Plants, Flowers, Perennials, Vegetables, Geraniums, Hanging Baskets, Potted Plants. 14345 Logan Road, 428-8078. Mon - Thur 10-6; Fri-Sun 10-5

LEGAL
No. Legislation tied to the constitutional amendment

ANTIQUE'S
ANN ARBOR ANTIQUES MARKET - THE BRUSHER SHOW Sun, June 19, 6 am - 4 pm. 5055 Ann Arbor Saline Road. Exit 175 off I-94. Over 350 dealers in quality antiques and select collectibles. Admission \$4.00, 26th season. The original!! 3/17-11/6
Manchester Antique Mall: 35 Dealers. Open 7 days 10-5. 116 E. Main. 428-9357. tfn
Quality Collectibles and Antique Furniture accepted on consignment. Please call 428-9040 or 428-9235 10 am - 5 pm. 6/16
Dearborn West Estate Liquidators Brooklyn, MI. Complete Auction Service, "Your Place or Ours", Call Don or Marilyn Koebbe. 517-592-3911 tfn

PETS
Found Dog. Medium Black/Brown Female Dog. Red stud collar. Found M-52 Main. Call 428-9871
Lost English Setter, Vicinity of Austin Rd/Vernon. White/brown spots, Medium long hair. Reward. 428-0430
Eight Free kittens - Litter trained - gray, black, calico, orange, Siamese look-alike. Kathleen 428-8343

EDUCATIONAL
WELCOME THE WORLD to family, school, community. SHARE as a HOST FAMILY. American Intercultural Student Exchange. Europe, Russia, Brazil, 50 countries! Active caring local representatives. Exciting! Rewarding! Relevant! Lifetime! August arrival if you call Michigan: Eileen (517) 875-4074 or 1-800-SIBLING 6/16

FOUND
Found Keys near Union Construction with Reebok & Village Corner Tags. 428-8496

WORK WANTED
LAWNMOWING, FIELD MOWING, Asphalt Sealing, Tree & Brush Trimming, Plant Installation and MORE. FREE ESTIMATES. Insured. Call T & N SERVICE, INC. 428-7002 6/9

VEHICLE
1986 MAZDA B - 2000 P/U ugly but dependable, 5 - speed, Club Cab, cap, liner. S750 firm. 428-9284 eves.

SUMMER JOBS
Chelsea area manufacturing plant has immediate openings in our meat processing and packaging department for both 1st and 2nd shifts. Starting pay \$5.50/hr. \$6.00 after 90 days Job premiums up to \$.75/hr. 2nd shift premium of \$.25/hr. Safety incentive plan Attendance Bonuses Cavanaugh Lakeview Farms 821 Lowery Rd., Chelsea 313-475-9696

Exchange Place is working!
Kids who have utilized "The Exchange Place" at the Manchester Enterprise report they have received summer jobs from their advertisements!
Please stop in and register yourself, so we don't disappoint others who are looking for reliable workers.

Exchange Place is working!

Millage issue: Continued from p. 1

Eventually, all districts will have to hold an election for this purpose. Approximately 225 school districts will be holding a millage election for this purpose in June.
• How many times may a school district hold a millage election each year? Schools may ask the voters two times to approve a millage rate greater than the prior year's authorized rate as adjusted by rollbacks. There is no limit on the number of elections held to authorize millage below the prior year's adjusted authorized rate.
• What will happen if the voters do not approve the 18 mills on non-homesteads after two elections? The school district's revenue will fall short of its full foundation level by the amount of the local revenue. The state will not make up this loss of revenue. For most districts, the loss of local revenue would create severe fiscal hardship.
• Is there any other operating millage that schools may ask voters to approve? Yes. For the next three years schools may ask voters to approve up to three enhancement mills for school operations. After that, the three enhancement mills must be approved by a vote at the intermediate school (ISD) level. If approved by a majority of the voters in the ISD, the mills would be shared on a per student basis among all the school districts.
• Can school districts use the county allocated mills they had under the old school finance system? No. Legislation tied to the constitutional amendment

passed in March eliminated county allocated millage for schools.
• Superintendent Niedzwiecki furnished the definition of some of the terms as used in defining some of the legal language. Dedicated revenue — State source of revenue, such as the lottery, specified by the state constitution or Legislature and dedicated to the school aid fund for spending on K-12 students only. Enhanced mills — Pending voter approval, school districts can levy three enhancement mills for school operating purposes until 1997. After 1997, these mills can only be allocated on an Intermediate School District (ISD) level and shared with all districts in an ISD if approved by a majority of ISD voters. Foundation grant — Specified by the state, a guaranteed amount of money per pupil per year — currently at \$4,200. Hold-harmless — Holds per pupil spending at its current level and guarantees no less revenue per pupil. Hold-harmless millage — Millage elections for school districts having revenues of more than \$6,500 per pupil to keep them at their current level of revenue. Intermediate School District (ISD) — School district which supplies support services to students in one or more K-12 districts within a geographic area. Per-pupil spending — Total operating dollars spent in a district divided by the total number of pupils in the district.

Terry Monkiewicz - "Achievement in Education"

The recipient of the 1994 Achievement in Education Award is Terry L. Monkiewicz. She is the Guidance Counselor at Manchester Middle School. The award was presented by the Manchester Optimist Club at its dinner meeting on May 23, 1994. The selection committee obtained input from various sources including school administrators, staff, students and community members. The guidelines used to select the winner include: commitment and dedication to the students, positive impact on the students, and peer recognition. The comments received include, "She works for the children, not for herself or the school," and "She works very hard to provide counseling services and is a vital member of the drug and alcohol abuse education and in establishing a successful school crisis team." As Terry is an avid gardener, the Optimist Club felt it to be appropriate that the gift certificate accompanying the award was from Turners Nursery.



WHAT IS YOUR PROPERTY WORTH? Call for a FREE Market Analysis! Brian Brickley Multi-million Dollar Producer 662-8600 or 714-9852 HOMES • LAND • FARMS • INCOME PROPERTY

RDK R.D. Kleinschmidt, Inc. We Build Our Reputation Around Your Home ROOFING-SIDING-GUTTERS • Shingles & Flat Roofs • Siding & Trim • Seamless Aluminum Gutters • Replacement Windows 313/428-8836 19860 Sharon Valley Road • Manchester

Sula Darlene Jeffers ATTORNEY AT LAW 148 E. MAIN STREET P.O. BOX 625 MANCHESTER, MICHIGAN 48158 (313) 428-8190

Oil Change Special \$15 Everyday Low Price (up to 5 qts. of oil, foreign cars excluded) Full Recycle Machines for air conditioners and anti-freeze We Turn Rotors & Drums Brakes Exhaust Shocks & Struts Tune Ups Front End Alignments Radiators Tires Tie Rod Ends CV Shafts Batteries Transmissions Mon - Fri 7 am - 7 pm Sat 8 am - 5 pm Closed Sundays THE ONLY FULL SERVICE GAS STATION IN TOWN BENEDICT'S SERVICE 24 Hour Wrecker Service 327 W. main St. 428-8576

Flat Fee \$500 APPLICATION FEE \$300 CREDIT REPORT, SURVEY \$150 TITLE INSURANCE \$250 APPRAISAL FEE \$250 CLOSING, RECORDING \$230 \$500 closing costs, no strings attached At last, a purchase mortgage that takes the guesswork out of closing. Save hundreds of dollars in closing costs Deal with a leader in mortgage lending. Republic Bancorp is one of the top ten lending institutions in Michigan, providing innovative loan products, outstanding personal service, financial strength and stability. For additional information on our Flat Fee \$500 home loans, call today at 665-4090 or 665-4080. * \$500 includes fees to process and close a portion may be refundable. Rates subject to change. Based on 15 year, \$100,000 mortgage, no points with a 7.25% APR. Adjustable rate mortgage subject to increase and based on an index subject to change. For RFR, look in value. *Owner occupied. • No unpleasant surprises at closing — no last minute costs to have to cover • Everything is included except normal prepaid adjustments such as escrows, interest, and private mortgage insurance, if applicable. • Available with all Republic mortgage options — conventional, adjustable rate, zero-point, etc.

REPUBLIC BANK Member FDIC

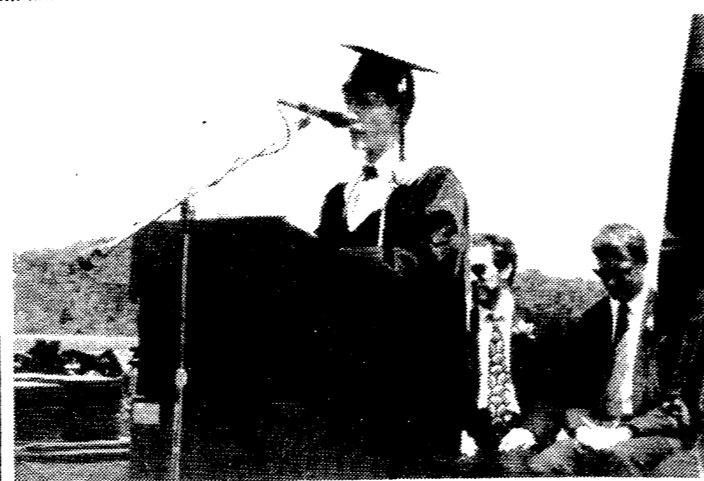
Class of 1994



Valedictorian, Kurtis McDonald: "If you can be happy with the career you choose, money and possessions aren't important; because true happiness can't be bought."



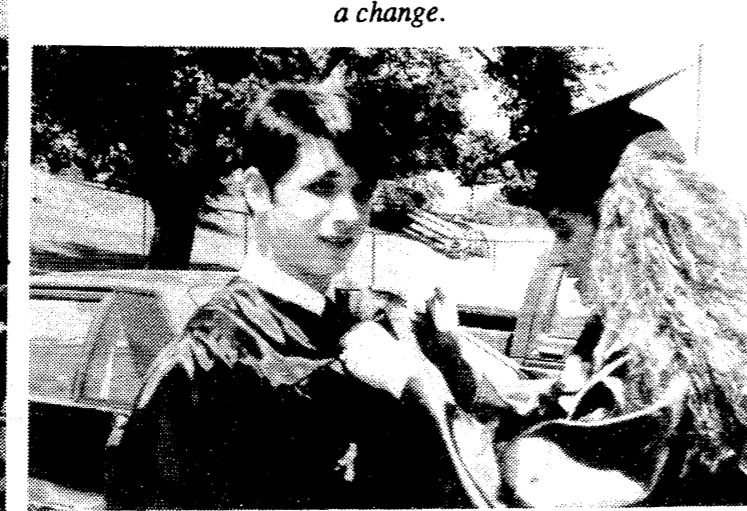
Salutatorian, Ben Lowery: A teacher told him, "By the end of the year, you shouldn't need me." Ben said, "Hoping isn't enough; you must cause a change." We, the class of 1994, are ready to cause a change.



Four Year Class President, Zac Gordon: "Someone Special" Zac spoke about parents and friends, quoting from "It's A Wonderful Life" - No man is a failure who has friends."



April Butterfield singing, "I Will Remember You" to her classmates.



FRIENDS - helping each other. Charles McKibben and Amy Brennan



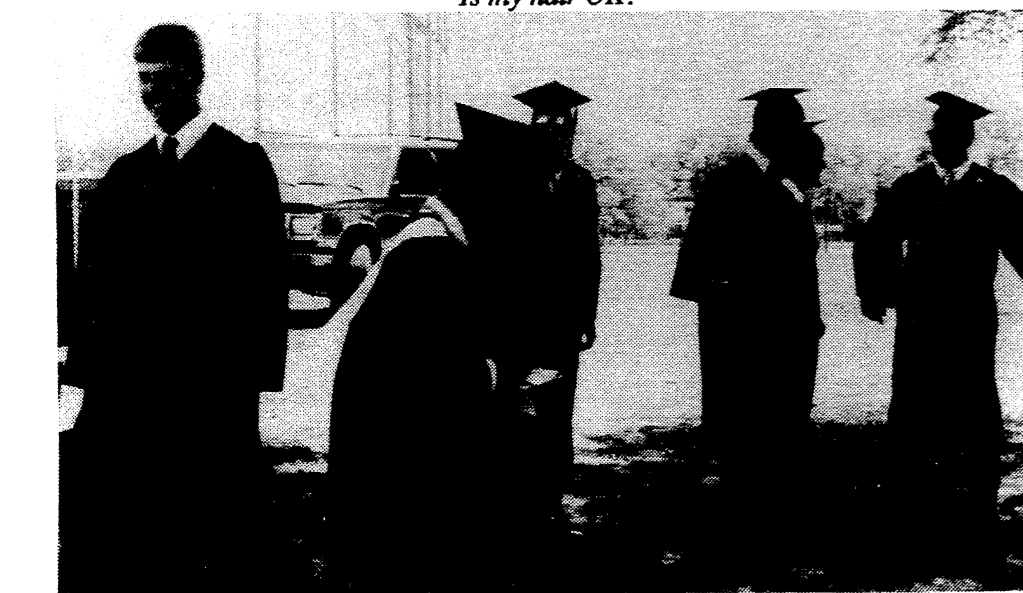
FRIENDS - hold hands and stick together. Adrienne Wallace and Mike Barnard



"Is my hair OK?"



Shayne, Aren't you ready yet?



Zac Gordon makes last-minute revisions to his Graduation speech.



Parents - the Best FRIENDS of all

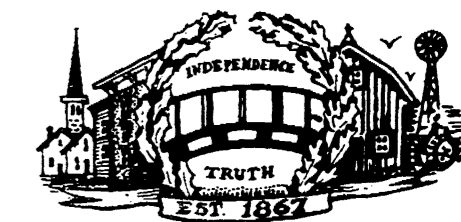


Underneath the Old Oak Tree - We'll still be friends.



Congratulations to Manchester Enterprise Scholarship Winner, Amie Bryant, who achieved her four-year education in three years. Setting goals works - right, Amie?

THE MANCHESTER ENTERPRISE



The Center of the Universe

126th Year -- No. 33

Manchester, Michigan

35¢ per copy

SCHOOL MILLAGE VOTES VERY DIFFERENT FROM MILLAGE VOTES OF THE PAST

By State Treasurer Douglas B. Roberts

Voters in many districts will be going to the polls this month to vote on school millages - millage votes that many thought were a thing of the past. With the passage of Proposal A in March, Michigan voters have been assured a more equitable school funding system will receive significantly lower school property taxes on primary homes. Our new school taxing system lowers schools' reliance on local school mills by up to 65%. It does, however, require some local effort toward paying for the changes in our school financing system. The following points will, I hope, give you important information as you decide how you will vote on an upcoming millage election.

- All property in the state is assessed a 6 mill State property tax. This tax is not voted and is collected with other local property taxes and forwarded to the state School Aid Fund.

- All school districts must levy an additional 18 mills on NON-HOMESTEAD property in order to receive their full state guaranteed foundation grant for each student in the district. These 18 mills, if previously in place before Proposal A, may continue to be levied without a vote until they expire. Once these mills expire, local voters must renew these 18 mills on NON-HOMESTEADS. These 18 mills, plus the 6 state mills, will guarantee a per-pupil foundation grant equal to this year's revenues plus an inflationary cost

of not less than \$160 per student. This formula applies to the 517 districts which spent less than \$6,500 per student in 1993-94.

- There are 40 districts in which revenues were more than \$6,500 per student this year. In these districts, "hold harmless" mills will be required in addition to the millage listed above. The "hold harmless" mills will be used to make up the difference between the state-funded \$6,500 per student and the current spending per student. For example, if a school district was spending \$8,500 per pupil in 1993-94, then the "hold harmless" mills will be needed to raise \$2,000 per pupil - the difference between \$6,500 and \$8,500.

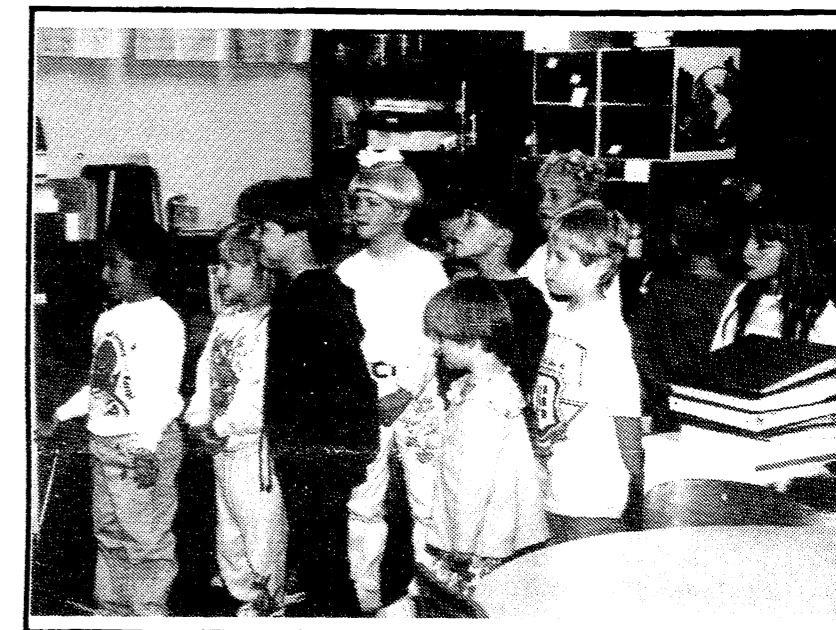
- Finally, some local school districts are seeking an allowable three extra mills for up to three years. These "enhancement" mills can only be levied for three years and cannot be renewed. School districts requesting voter support for these extra mills will need to tell local voters the purpose of these extra mills for their own school district.

One of the most important aspects of our new financing system is that most districts presenting a renewal request to voters are asking for extended authorization - thus eliminating the frequent voting patterns of the past and allowing voters to vote every 10 to 20 years. This provides a considerable savings in human and financial resources which can, and should, be used more effectively in the classroom. Thus, school districts are

not completely out of the millage business. Locking in 18 mills on NON-HOMESTEADS will not limit revenues per student; the State will continue to fund increases. And, Proposal A amended the State Constitution guaranteeing per-pupil revenues will never fall below this year's levels...regardless of what happens to our economy over time. If a district fails to approve the 18 mills on non-homestead property, the result will be less dollars for the school district. The Legislature is working on a bill that clearly outlines what happens if voters fail to support the 18 mills. It is expected that the school district will continue to receive the state portion of their per-pupil foundation grant, but would lose the local portion. This situation would effectively cut school revenues by 50% to 60% in some districts.

If you live in a school district that spent more than \$6,500 per pupil, you will be asked to vote the 18 mills on non-homesteads and a number of additional mills on your homestead. The purpose of these additional mills is to maintain the level of spending your district experienced during this school year. The bottom line is that for the vast majority of school districts, homestead taxes for schools will be limited to 6 mills and non-homestead taxes will be 24 mills. Please keep this information in mind as you go to the polls this month to vote on school mills. And remember, the 18 mills you are voting will be placed on NON-HOMESTEAD property only.

KIDS CAN USE YOUR HELP! GET OUT AND VOTE!



EWG

Our local school district is undergoing a complete change in both how our schools are being funded and what we are financially responsible for.

We can talk of foundation grants, full funding and the myriad of changes created by the new state financing law. However the BOTTOM LINE IS THIS.

The State of Michigan will fund the Manchester School District with \$4597 per student without the requested 18 mills being passed, on Non - Homestead property. We will have \$5338 for each pupil, for operating if the 18 mills passes.

The district will also receive, in special grants, \$141 for special Ed., transportation, bilin-

gual, at risk monies and misc. grants from the State. The Federal grant funds will give an additional \$368 from county ISD funds, Food service and business loan interest.

We will be responsible for paying all Employee Retirement Costs, in the amount of \$369,000 in 94/95 year. At risk students for academic performance and special education will be another \$84,640. For an increased liabilities cost of \$453,680.

No one is sure at this point in time what the final outcome of the new state funding act will be. We will have to be on guard and financially responsible if we educate properly.

See page 4, Editorial/Opinion for Enterprise Editorial.

Inside This Issue

Community Calendar.....	Page 2
Earl Aiber.....	Page 3
Editorial Opinion.....	Page 4
Local Government.....	Page 5
Church News.....	Page 8
Announcements.....	Page 17
School Board Profiles.....	Page 11
People.....	Page 14
Senior Citizens.....	Page 9
School Pages.....	Page 12/13
Classifieds.....	Pages 18/19



Presenting "THE CLASS OF 1994" - See our Special Insert

Please deliver this copy to THE MANCHESTER ENTERPRISE Co.