

Club News



Manchester Area Historical Society

HISTORICAL SOCIETY INVITES YOU TO MEMORY LANE

The Manchester Area Historical Society invites you to join us on May 17 to meet long-time community resident Glenn Lehr. Mr. Lehr has seen many changes in the village of Manchester. He has agreed to share some of his memories and answer questions about growing up in this area many years ago. If you are new to this community, you may glean a bit of insight about the history of your house or a building downtown which caught your eye. If you've lived here all your life, this is a great opportunity to swap stories with an old friend.

Mr. Lehr's memories will be captured on videotape as part of an informal partnership between the Manchester Area Historical Society and Eastern Michigan University. EMU students Mike DiMaria and Jeff Pillars will produce videotape material for historical society archives, and at the same time satisfy a college-credit internship required for advanced video production students.

The May 17th meeting will begin with a short business update at 7:30pm. Mr. Lehr's trip down memory lane begins at 8:00 pm. Please join us at the Blacksmith Shop at 324 East Main Street. Refreshments are served after the meeting. We hope you will feel welcome to attend.

Deb Havens

Manchester Masonic News



Bruce Hunt and Michael Vish received their Fellowcraft Degree April 19 at the Manchester Lodge #148. Peter F. (Pete) Westerman, of Ann Arbor Fraternity #262 was the guest lecturer.

A Master Mason's Degree and Dinner will be held in their honor June 4 at 4:00. Master Masons may contact an officer of the Lodge for details.

Pictured above, L-R: Bruce Hunt, Pete Westerman, Michael Vish

Poppy Days May 13-14



American Legion Auxiliary volunteers will distribute the familiar red, handcrafted poppies honoring America's war dead on May 13 & 14, designated as Poppy Days by Auxiliary Unit # 117 in Manchester.

The annual event pays tribute to those veterans who have died in the last 73 years. It also honors the millions of Americans who have willingly served their country in seven decades.

It serves as well as honors the veteran with all proceeds from the distribution invested in local programs for the benefit of the veteran and the family.

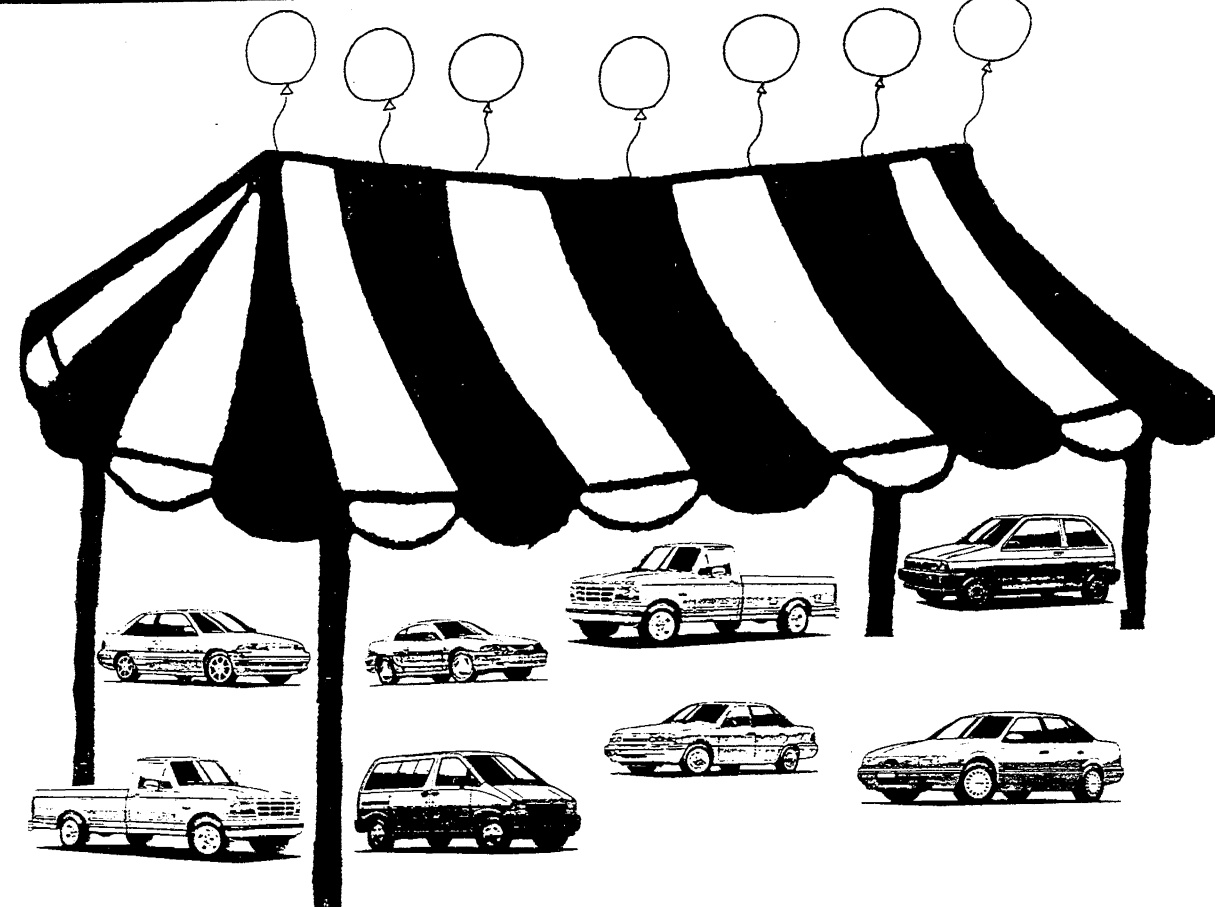
Each nine-piece poppy is made by veterans for veterans in Auxiliary-sponsored Poppy Shops that supplement physical and psychological therapy

needed by hospitalized and disabled veterans. The Auxiliary provides the materials and the volunteers. The veteran makes the poppy and is paid a small amount for each painstakingly-made flower. For some it is their only income.

No matter what the cost of maintaining and supplying the Poppy Shops, the memorial poppy is never sold, but given in exchange for a contribution.

The Poppy program has been part of Auxiliary programming for more than 68 years. It has been estimated that approximately 25 million Americans wear the poppy to honor America's war dead and all veterans, contributing over \$2 million for rehabilitation and welfare programs. Mary Smith and Della Widmayer are co-Chairs of this year's event.

NOTICE



TENT SALE Going Strong

We pay the new sales tax increase on Your New Ranger or Escort*

Advertisement for Manchester Residents featuring a diamond-shaped graphic with text: 'MANCHESTER RESIDENTS!! If you're in the market for a new FORD Car or Truck watch your mailbox for a very special Manchester ONLY promotion that will save you a Bundle! Remember: Your MIDWEST FORD Purchase Helps our Manchester High School Scholarship Fund Grow!! FREE 24 Hour Locate Service If we don't have the exact vehicle you desire, we generally can locate it within 24 hours & you can be driving exactly what you want!'.

* We'll pay 2% of your sales tax on new Ranger or Escort. A, X, Z, plan & leases are ineligible for this promotion

MIDWEST FORD

510 W. Main St. Manchester 428-8343

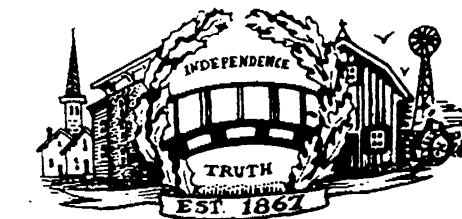


Sales Hours: Mon & Thurs 8:30 - 8:00 pm; Tues, Wed, Fri, 8:30 - 6:00; Sat 9:00 - 3:00

COUPON

Leutheuser's Restaurant coupon: 'Tuesday & Wednesday Night Summer Special May 3 - August 31, 1994 Buy 1 Dinner - Receive 2nd Dinner 1/2 OFF* Since 1927 413 E. MICHIGAN AVE. SALINE • (313) 429-9340 Tues & Wed Dinner Hours: 4:30 - 9 p.m. Reg. Hours; Tues - Thurs 11 am - 9 pm, Fri & Sat 11 am - 10 pm, Sun 11 am - 8 pm MUST PRESENT THIS COUPON WITH DINNER "M"'

THE MANCHESTER ENTERPRISE



The Center of the Universe

126th Year -- No. 30

Manchester, Michigan

35¢ per copy

Michigan Loses a Leader; Manchester Loses a Friend

Some of the coffee shop patrons called him, "John B", "Governor" or just "John". Many knew him by sight; others by reputation. John B Swainson was a very private man in spite of being a public figure.

Dan Boutell, a friend of many years, remembers John. "I don't think I can remember any man who played Life's cards dealt to him, as well as John Swainson. If he was accused of a mistake he paid the penalty dealt him without complaint."

The great loss he sustained during World War II was overcome by his acceptance of the loss and his desire to help others with disabilities. John had a great pride in his community which was evidenced by many acts which helped promote publicity for events that were important to all of us. He loved to hear stories and usually categorized them as being either useful to him or unable to use.

John's humor was always expected and had a tendency to lighten up a crowd. At a public gathering for a departing minister, he called himself "a leader of your non-church going paying congregation."

As a "Bridgewater Democrat", John once said he believed if a Democratic vote was cast in Manchester, the fire whistle would go off. When John and Alice bought their Bridgewater Township farm they named it the "Hustings", (meaning the proceedings at an election).

John, because of his disability was dependent on his car to go from place to place. More recently he was able to "hitch a



John Swainson as Manchester will remember him

ride" with Dan Boutell to and from the Coffee Shop and to the Post Office, after his stroke last fall.

John's sessions at the Coffee Shop were often sessions in which locals asked legal questions or solicited free advice. John, as well as an attorney was a very well read man and consumed prodigious amounts of written material. He spent untold hours helping with community efforts of historical

significance and community interest.

As the Outstanding Volunteer nominee of the Manchester Historical Society this year, "John has volunteered approximately ten years of service to this organization. He is currently immediate past president and board member, the master planner of our building restoration program in 1985; and a willing volunteer to speak and preside at official functions and

to be commentator for various historical video tapes produced by the Society.

"He is a former board member of the Manchester Area Senior Citizens Council, Inc., representing the handicapped. He also furnished valuable legal advice from time to time. A charter member of the Manchester VFW post. Without regard to the geographic limits of Manchester, John has always made himself personally available to fellow handicappers. Such involvement has not been documented, and was not done to gain public recognition.

"It is safe to say that without his personal involvement there would not be the six or eight state historical markers which are presently in this area."

Hugh McDiarmid, of the Detroit Free Press, also recalled John's service to handicapped citizens. He recounted an occasion where John reportedly tap danced without the use of his artificial legs, in order to demonstrate to another amputee that "life will be what you make of it." A lesson from which most of us can benefit.

Many of us in Manchester did not know John Swainson as a "politician", but as a fellow member of our community who cared about what happened here, and took an active role to ensure that the character of the community was retained. It is in that capacity that John B. Swainson will be most sorely missed in our village.

- EWG/MJC



John as Chairman of the Michigan Historical Commission



Arbor Day Was Celebrated in Manchester this weekend - see story and pictures, Page 6 L-R: David Sweeton, Jason Crowder, Dave Roberts, Ted Roberts, Bill Kwolek, Pat Chapin, Sybil Kolon & Dave Chartrand

Inside This Issue

Community Calendar..... Page 2 Walco Foods Expansion..... Page 3 Editorial/Opinion..... Page 4 Local Government..... Page 5 Church News..... Page 8 Announcements..... Page 17 Canoe Race..... Page 10/11 People & Occasions..... Page 14 Senior Citizens..... Page 9 School Page & Sports..... Page 12/13 Clubs..... Page 16 Classifieds..... Page 18

Vertical text on the right side of the page: Please deliver this copy to THE MANCHESTER ENTERPRISE c/o Manchester Township Library P.O. Box 510 Manchester, MI 48153

Community Calendar

Scheduled Meetings

Bridgewater Twp.
Doug Parr Supervisor
428-8243
Karen Weidmayer
13360 E. Austin
428-8641
Planning Commission
2nd Monday 7:30
Township meeting
3rd Tuesday 8:00

Freedom Township
Town Hall 428-7545
11508 Pleasant Lk. Rd.
Robert Little Supervisor
Julie Schaible, Clerk
13785 Pleasant Lk.
428-7241

Township meeting
2nd Tuesday 8:00
Planning Commission
meets on demand
Manchester Township
Town Hall 428-7090
Ron Mann Supervisor
275 S. Macomb

Kathleen Hakes, Clerk
Township meeting
2nd Monday 8:00
Planning Commission
Last Monday
FIRE DEPARTMENT
428-9439 non-emergency calls
Sharon Township
Supervisor John Savage
20453 Pleasant Lk. Rd.
428-8907

Duane Haselschwerdt
428-7733, 428-7591
8440 M-52

Township Meeting
1st Thursday 8:00
Planning Commission
2d or 3d Thursday
Manchester Board of Education
Pat Sahakian, President
Meetings

3d Monday 7:45
M.H.S. Library
Superintendent - Ron
Niedzwiecki 428-9711
Village of Manchester
Larry Becktel President
Jeff Wallace Manager
120 S. Clinton
428-7877
Village Council Meets
1st & 3d Monday
7:00

The Community Calendar is a regular feature of the **Enterprise**. If your group would like their regular meetings printed here, please let us know at 428-8173.

Clarification: The photo on page 1 of the May 5th issue of the **Enterprise** showed youth representing their organizations. The organizations, not the individuals, were recognized for their achievements in the community.

Manchester Township Library hours:

Monday - Thursday, 11:00 am to 8:00 pm; Friday and Saturday, 11:00 am to 4:00 pm.

Chelsea Art Fest

The Chelsea Painters will hold their 21st annual Art Fest on the grounds of the Chelsea Community Hospital and Chelsea Medical Center on Saturday June 4, and June 5, from 10 A.M. to 5 P.M.. Area award winning artists will exhibit and sell original watercolors, acrylics, oils, prints, drawings, collages, and cards.

A percentage of the proceeds will enable us to award the Palmer Medical Scholarship. Since 1974, the Chelsea Painters have given more than \$10,000 to this fund. Last year the recipient was J.D. Alford from Chelsea, a medical student at the University of Michigan.

The Chelsea Community Hospital Auxiliary will assist with refreshments and there will be entertainment by Dusty Rhodes on both days. This event will be held rain or shine and is open to the public.

THE MANCHESTER ENTERPRISE

The Manchester Enterprise is published each Thursday at 109 East Main St., Manchester, MI 48158, with second class postage paid at the Manchester Post Office.

POSTMASTER: Send Form 3972 to: Manchester Enterprise, P.O. Box 37, Manchester, MI 48158.

The Manchester Enterprise, Inc.
(313) 428-8173
Editor & Publisher
Emory Garlick

Production & Writer
Marsha Johnson Chartrand

One-year subscriptions are \$15 within Washtenaw County, \$18 outside the county. Deadline for display ads, photos, classifieds and news articles is Monday at 3:00 p.m. The Manchester Enterprise. No part of this publication may be used without the written permission of the publisher.

© 1994 The Manchester Enterprise

Dial a Garden
971-1129
Wednesday, May 18: Controlling Mosquitoes
Thursday, May 19: Cutworms
Friday, May 20: Growing Azaleas & Rhododendrons
Monday, May 23: Nutrient Requirements of Plants
Tuesday, May 24: Flowers for Shady Areas
Wednesday, May 25: Ornamental Grasses

COMMUNITY EVENTS

Monday
1st Monday: Manchester Township Library Board meets 7:30 pm.
1st Monday: Manchester Masonic Lodge, business meeting 7:30
1st & 3rd Mondays: Manchester Village Council, 7:00
2nd Monday: Bridgewater Township Planning Commission meets 7:30
2nd Monday: Manchester Township Board meets 8:00
2nd & 4th Mondays: Manchester Optimist Club
3rd Monday: School Board meets MHS Library 7:45
Last Monday: Manchester Township Planning Commission

Tuesday
2nd Tuesday: Freedom Township board meets 8:00
2nd Tuesday: (after 1st Monday) Village Planning Commission
2nd Tuesday: Manchester Area Senior Citizens, 9:30 am
2nd Tuesday: 20th Century Club, 7:30 pm.

Wednesday
1st Wednesday: Veterans of Foreign Wars, 7:30 pm
2nd Wednesday: American Legion Auxiliary, meets 7:30
2nd Wednesday: Manchester Recreation Task Force, 7:30 at Blacksmith Shop.
3rd Wednesday: Community Resource Center Board, 7:30
3rd Wednesday, WIC Program and Immunization Clinic, 9:30-3:00 Senior Citizens Bldg.
Every Wednesday: Kiwanis, 6:30 at Haarer's

Thursday
Every Thursday: Manchester Community Band, 7:30 pm
1st Thursday: Sharon Township Board meets 8:00
1st Thursday: American Legion Post #117, meets 7:30
2nd or 3rd Thursday: Sharon Township Planning Commission
3rd Thursday: Cub Scout Pack Meeting, 7:00 pm

Friday
2nd Friday: Village Piece Makers meet at Emanuel Church, 7-10 pm. All are welcome.
Friday, May 20: Human Services at Manchester United Methodist Church, 9-11 am

Misc. Notices
Sunday, May 22: Sportsman Club Open House & Membership drive.
Sunday, May 22: Open House at Manchester Township Hall

Manchester Sportsman Club
OPEN HOUSE
Sunday, May 22 1:30 - 4:30
at the Club on Grossman Rd.
Come join us and see what is or can be available for today's Outdoor Sportsman

KARAOKE
Sing in Spring
Saturday May 21st @ 9 pm
The Village Tap

King's Daughters
The former "Manchester King's Daughters" will meet at the home of Margaret Hanks at 1:00 pm Thursday, May 26, 1994.

Human Services Group
Western Washtenaw County
"We go the extra mile for You"
This month's event:
****MEET WITH A VETERANS' BENEFIT SPECIALIST**
***JOBS/SUMMER YOUTH ENROLLMENT**
Friday, May 20, 1994
9:00 am - 11:00 am
Manchester United Methodist Church
501 Ann Arbor Rd., Manchester

EARLY DEADLINE for The Manchester Enterprise
Issue of June 2, 1994
will be 5:pm
Friday, May 27th
All ads and articles must be submitted by that time

What to Expect:
*Find out what Benefits are available to Veterans
*Summer Youth Enrollment for jobs!
*Enroll in a food and nutrition program!!
Sample delicious, nutritious food!
This month's commodities:
Apple Juice • Butter • Rice
"Stop in, have fun, see what we're all about!"

MANCHESTER ENTERPRISE

Second Front Page: Walco Foods Expansion

Growing With the Community

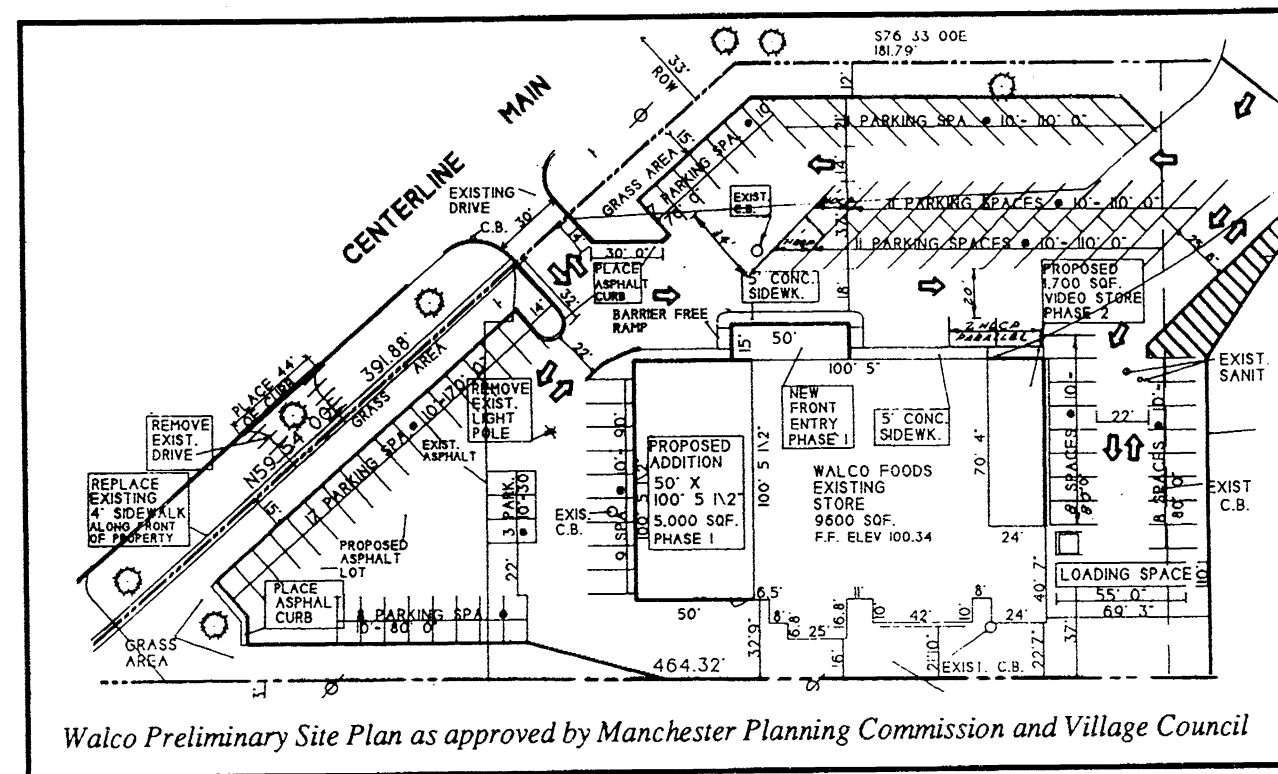
by Marsha Johnson Chartrand

Walco Foods' planned expansion is a few steps closer to becoming a reality. The site plan review has been approved with a few changes by the Manchester Village Planning Commission.

When the "new" A & B IGA store was built in 1976, it seemed so "state of the art" compared to the older building at the corner of Main & M-52. After eighteen years, a change of ownership, and changes in the grocery store industry, it is time for some updates, in both the interior and the exterior.

Nearly 7500 square feet will be added to the store when the expansion is completed, hopefully by the end of this year. A total of 16,700 square feet in the store will still make it one of the "smaller" Walco Foods supermarkets. "Lots more" parking, a total of 100 spaces, will be available for their customers. The recycling bins will be relocated to a paved area on the parking lot.

A 5000 square-foot addition to the front (northwest) side of the store which will house a full deli (hot and cold), a "Value



Walco Preliminary Site Plan as approved by Manchester Planning Commission and Village Council

Center" - pallets and cases, warehouse-priced, and a new run down of frozen foods. An additional check out counter will increase customer service, according to owner Jerry Wallace. "We will also be totally updating the interior" of the building. A 750 square foot entry way will provide access from two sides.

A 1700 square foot addition to the rear (east) of the store will house a video outlet, providing space for hundreds more videos than their current collection.

Exterior improvements will include adding more lighting to the parking lot, trees placed around the edges, a new sidewalk, trees in the village ease-

ments - "Aesthetics," commented Jerry. A large walnut tree in the Rose yard will be saved at the edge of the parking lot.

Anticipating further growth in the Manchester area, Wallace noted that they can continue to expand based upon these plans. "We own the railroad bed all the way to Macomb Street; so we have plenty of room for further expansion in the future," said Wallace.

"We have had no problems with the Council through all of this. The Village has been very helpful to us." Village Manager Jeff Wallace (no relation!) indicated that the final site plans will be brought to Council Monday evening for probable approval. "The Planning Commission has recommended its approval; and the Council usually agrees to the Commission's recommendations."

One of the major reasons for the expansion, according to Jerry, is the pride that Walco takes in their customer service and service to the community. "The extra volume we are able to generate with the new addition will provide more people and better service to our customers." Work will begin as soon as the work at their Dexter store is completed - hopefully before the end of summer. With expected completion in three to four months, we should have a new, improved Walco Foods store in Manchester by the end of the year.

car care
8409 Boettner Road
Bridgewater, MI 48115
944-0332
Now Open
Complete Auto Detailing & More

- ▲ Waxing & Polishing
- ▲ Interior Cleaning
- ▲ Sunroof Sales, Starting at Just \$159⁹⁵ and Up Installation & Repair
- ▲ Splash Guards
- ▲ Truck Accessories
Running Boards, Sun Visors, Tonno Covers, Headlight Covers, Taillight Covers, Bug Shields, Push Bars
- ▲ Pick Up & Delivery Available

STEIN ELECTRIC COMPANY, INC.
Licensed & Insured Contractor
24 Hour Emergency Service
Motor Controls & Lighting
Ag. • Commercial • Industrial
Institutional • Residential
Backhoe & Trenching Services
50 ft. Bucket Truck
(313) 428-9050
Rick Graustein • Manchester, MI

THE AURA INN
11275 Pleasant Lake Road
428-7993
KARAOKE BLOWOUT
Saturday 9 pm
May 21st, & 28th
Come EXPRESS Yourself!!
HOURS: OPEN EVERY DAY 12-12, except Mondays

Editorial / Opinion

May 11, 1994
Dear Editor:
"Christmas in April" is a home improvement program for our local residents. As participants, we know that the success of this program is not solely in the improvements that are made, but also in the good feelings of the many volunteers who commit their time and materials to the projects.

This year marks the 3rd year that IBEW Local 252 Electricians and Contractors have contributed time, labor and materials to support this community effort. Volunteer Contractors included Harper Electric Co., K&F Electric Company, R.A. Meyer Electric, Inc., Turner Electric Service, Inc. and Douglas R. Wilbur Electrical, Inc. who worked in Ann Arbor, Chelsea, Dexter, Manchester, Milan, Saline, Ypsilanti, Whitmore Lake and through out Washtenaw County with over 35 Local 252 Electricians. All costs were borne by the Contractors and Local 252 Labor Management Committee.

We were proud to be involved in this project, and look forward to next year's effort.

Sincerely,
Greg Stephens
Business Manager
IBEW Local Union 252

Douglas Wilbur
WCECA

★ ★ ★ ★ ★ ★ ★ ★ ★ ★
★ 517 - 265 - 3055 ★
24 Hour Movie Hotline
ADRIAN CINEMA 6
3150 N. ADRIAN HWY.
Shows Before 6 PM \$3.00

May 20 - May 26

YOU SO CRAZY *not rated*
Fri & Mon-Thurs 5:40, 7:40, 9:45
Sat & Sun 1:40, 3:40, 5:40, 7:40, 9:45

MAVERICK PG
Fri & Mon-Thurs 4:30, 5:00, 7:00, 7:30, 9:40, 10:00
Sat & Sun 1:15, 2:00, 4:30, 5:00, 7:00, 7:30, 9:40, 10:00

THE CROW R
Fri & Mon-Thurs 5:30, 7:30, 9:50
Sat & Sun 1:20, 3:20, 5:30, 7:30, 9:50

WHEN A MAN LOVES A WOMAN R
Fri & Mon-Thurs 4:30, 7:00, 9:30
Sat & Sun 1:30, 4:30, 7:00, 9:30

WITH HONORS PG13
Fri-Tues 7:15, 9:15

3 NINJAS KICK BACK PG
Fri & Mon-Tues 5:10 ONLY
Sat & Sun 1:00, 3:00, 5:10

Starts Wed. May 25
BEVERLY HILLS COP III
Fri. May 27
THE FLINSTONES

The Manchester Enterprise welcomes letters to the Editor, Guest Editorials, and your comments, suggestions and opinions.
We ask that all letters be signed! Should there be extenuating circumstances for not having your name published with the letter, we will give that full consideration.

FREE LAY-AWAY ★ FREE DELIVERY ★ FREE SET-UP

Tenpenny's GET UP TO \$5000 INSTANT CREDIT*

OAK AND CHERRY FURNITURE and Clearance Center

112 E. Mich. Ave., Clinton • 456-7445
Mon. & Fri. 10 a.m.-9 p.m.; Tues., Wed., Thurs., Sat. 10-6; Sunday Noon-5

Ben Gold, M. D.
Board Certified • Allergy & Immunology
Adult and Pediatric
Hay Fever • Sinus Disease • Asthmas
Food Allergy • Insect Allergy • Hives

Announces Second Location
Saline Professional Office Building
420 W. Russell • Saline
313-434-6050 or
1-800 - 675 - 3636

Follow your dream, not the beaten path.

No matter where your vacation dreams take you, AAA Travel Agency can get you there. We're Michigan's largest full-service travel agency.

1200 S. Main St., Ann Arbor 930 - 2250

RDK 313/428-8836
R.D. Kleinschmidt, Inc.
We Build Our Reputation Around Your Home

ROOFING • SIDING • GUTTERS
• Shingles & Flat Roofs
• Siding & Trim
• Seamless Aluminum Gutters
• Replacement Windows

19860 Sharon Valley Road • Manchester

What do you call a giant sand sculpture in the middle of Briarwood?

We call it looney.

Look who's the center of attention. In our Grand Court, visit a 90-ton sand sculpture of the Looney Tunes gang. Watch the artists at work May 16th-27th, or come see the finished sculpture Memorial Day weekend. Now you don't have to wait till Saturday morning to see the Looney Tunes at their best. Have your picture taken with Bugs Bunny and Daffy Duck June 11 & 12, 11am-3pm.

BRIARWOOD
Better Than Ever

Hudson's, Jacobson's, JCPenney, Sears and 130 other great stores and services. 1-94 at State St., Mon.-Sat. 10am-9pm.; Sun. 11am-6pm. Department store hours may vary. (313)761-9550.

Local Government

An Open House and you're invited!

The Manchester Township Board and the Manchester Township Fire Department welcome this opportunity to invite the community to a "Mortgage Burning Ceremony" for the Township Hall and Fire Station, to be held on Sunday, May 22, 1994 at 2:00 pm.

The celebration is a culmination of a project that began in June of 1975, when a site committee was formed to look into suitable properties for a new fire station and township offices. The committee consisted of Jeanette Kirk, Jeanne Morrison, Eugene Bentschneider, James Kensler, Charles Cresswell, Harold Burch, and Robert Chapin. Francis Heckaman was later appointed upon the resignation of Bentschneider.

On November 4, 1979, the cornerstone was laid for the new building. The designation was made that the box behind the cornerstone should be opened on November 4, 2079. (Does anyone you know plan to attend?) The dedication of the hall was held on September 15, 1980.

It is appropriate that the beginning of "Michigan Week" is marked by such an auspicious occasion here in Manchester. The mortgage burning is an occasion which has taken nearly twenty years of work to accomplish.

Come and Celebrate with the Township, the Fire Department, and all the citizens, on May 22nd at 2:00.

UNAPPROVED PROCEEDINGS MANCHESTER VILLAGE COUNCIL MAY 2, 1994

The regular meeting of the Manchester Village Council was called to order at 7:00 p.m. by President Becktel. Council members present: Becktel, Brooks, Conaway, Marshall, Schaffer, Vought, Clerk Tucker, Manager Wallace. Absent: Taepke. Also present: Carl Werner, Glenn Burkhardt, Helen Hosmer, Norm Lenhart, Janet Shurtliff, Jean and Kevin Robert, Linda Mussio, Jerry Wallace, Craig Fielder, Timothy Arvov, Scott Perrin.

The minutes of the April 18, 1994 regular meeting were approved as submitted on a motion by Marshall, support by Vought. Vote: Ayes-all.

The proceedings of the April 18, 1994 regular meeting were approved as submitted on a motion by Marshall, support by Conaway. Vote: Ayes-all.

The Agenda was approved as amended on a motion by Vought, support by Conaway. Vote: Ayes-all.

Motion by Marshall, support by Brooks to accept the Treasurers Report for April 1994 as submitted. Vote: Ayes-all.

Motion by Brooks, support by Vought to approve the payables in the amount of \$49,063.36 as presented. Roll Call Vote: Ayes-all.

SHERIFF REPORT - Motion by Becktel, support by Brooks to close Main Street from M-52 to Adrian St. from noon until 4 p.m. on Sunday, May 15th for the annual canoe race. Vote: Ayes-all.

FINANCE - Motion by Brooks, support by Schaffer to approve the third quarter adjustments as submitted. Vote: Ayes-all.

WALCO FOODS PRELIMINARY SITE PLAN REVIEW - Motion by Schaffer, support by Brooks to approve the drawing #1, preliminary site plan for Walco Foods with the stipulation that items #7, 8, 10, 14, 13, 28, 32 (and #4) are taken care of. Vote: Ayes-all.

COUNCIL APPOINTMENTS AND RESIGNATIONS Motion by Becktel, support by Conaway to accept the resignation of Marty Way with regrets. Vote: Ayes-all.

Motion by Becktel, support by Marshall to accept the resignation of Gary Wiedmayer as Fire Inspector and appoint Mike Scully as Fire Inspector. Vote: Ayes-all.

Motion by Becktel, support by Brooks to appoint Jean Robert to Parks Commission. Vote: Ayes-all. Motion by Becktel, support by Marshall to accept the resignation of Gary Wiedmayer as Fire Inspector and appoint Mike Scully as Fire Inspector. Vote: Ayes-all.

Motion by Becktel, support by Brooks to appoint Jean Robert to Parks Commission. Vote: Ayes-all.

Motion by Becktel, support by Vought to appoint Amy Fielder to Planning Commission. Vote: Ayes-all.

Motion by Marshall, support by Vought to appoint Herman Boelter to Parks Commission. Vote: Ayes-all.

Motion by Becktel, support by Vought to go into closed session to discuss pending litigation, at 9:15 p.m. Vote: Ayes-all.

Motion by Becktel, support by Vought to adjourn at 9:18 p.m. Vote: Ayes-all.

Karen Tucker
Village Clerk

Hammerstrom files for Re-Election

State Rep. Beverly Hammerstrom, R-Temperance, has filed for re-election for the 55th District Michigan House seat.

A teacher by profession and 12-year Bedford Township clerk, Hammerstrom was able to put her considerable political background to work during her first year in the legislature. She served on the public retirement, local government, transportation, public health and mental health committees. As chair of the House mental health committee she oversaw the rewriting of the code governing treatment and housing of mentally ill prison inmates. Her first bill passed as a freshman legislator was the most significant revision of the state Mental Health Code in two decades.

For the past year, she has chaired the House Republican Policy Committee Task Force on Youth Violence. After 10 months of statewide hearings and investigation of juvenile detention facilities, she is now writing the task force report, scheduled for publication later this spring.

Through all her intensive committee work, Hammerstrom has maintained a 100 percent attendance record in the House and remained active in District affairs. Since January she has served on the Monroe County Local Emergency Preparedness Committee.

She attended Adrian College and the University of Toledo, and is presently working toward a masters degree. "Representing the 55th District has been a challenging and exhilarating experience, especially in a session that has had to deal with some of the most fundamental issues state government," Hammerstrom said. "I look forward to serving the people of southeast Michigan for another two years."

MANCHESTER TOWNSHIP PLANNING COMMISSION

NOTICE OF PUBLIC HEARING

TAKE NOTICE that the Manchester Township Planning Commission will hold a second public hearing on the application of Mr. & Mrs. Frank Januszyk for a Conditional Use Permit to allow for the operation of a Archery Range on premises presently zoned RC, Recreation-Conservation District.

Property is located in Sec. 31, Manchester Township, on the West side of Ayres Rd., South of Wellwood Rd., and North of Park Heights along the West Township Border. Land is presently owned by Mr. & Mrs. George Strasburg.

Public hearing will be held Tuesday, May 24, 1994, at 7:30 P.M. at the Manchester Township Hall, 275 South Macomb St., Manchester, Michigan.

Manchester Township Planning Commission

MANCHESTER TOWNSHIP PLANNING COMMISSION NOTICE OF PUBLIC HEARING

TAKE NOTICE that the Manchester Township Planning Commission will hold a public hearing on the application of Henry A. DeSautel, for a Conditional Use Permit for temporary use of a mobile home while constructing a single family residence. For parcel Number #16-06-300-020, located in Section 6, Manchester Township, subject parcel presently zoned RC, Recreational-Conservation District.

Property is 10.01 acres, located in Sec. 6, Manchester Township, at 15394 W. Austin Rd. on the North side of Austin Rd. West of the intersection of Austin and Noggles Road.

Said hearing will be held on Tuesday, May 24, 1994, at 7:30 P.M. at the Manchester Township Hall, 275 South Macomb St., Manchester, Michigan, 48158.

Manchester Township Planning Commission

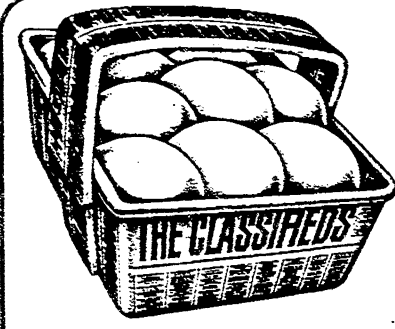
Business or Pleasure
We have a Rental Plan to fit Your Needs
Taurus Sedans • Vans • Trucks
New - Clean - Smoke Free
MIDWEST FORD
RENT-A-CAR 428 - 8343 RENT-A-TRUCK

Reinhart
Charles Reinhart Company Realtors

DEBORAH ENGELBERT Off: 313/971-6070
Sales Associate Res: 313/475-8303
22 MILLION IN SALES Fax: 313/747-7880

2452 East Stadium Blvd. Ann Arbor, MI 48104

Bruce A. Bates D.D.S.
500 Galloway Drive, Manchester, Michigan
(313) 428-8277
Complete Family Dentistry
• Adults & Children Always Welcome as New Patients.
We Accept Dental Insurance
VISA • MasterCard • Discover
Payment Plans Available
Gentle Dental Care
Relaxing Gas Available Upon Request

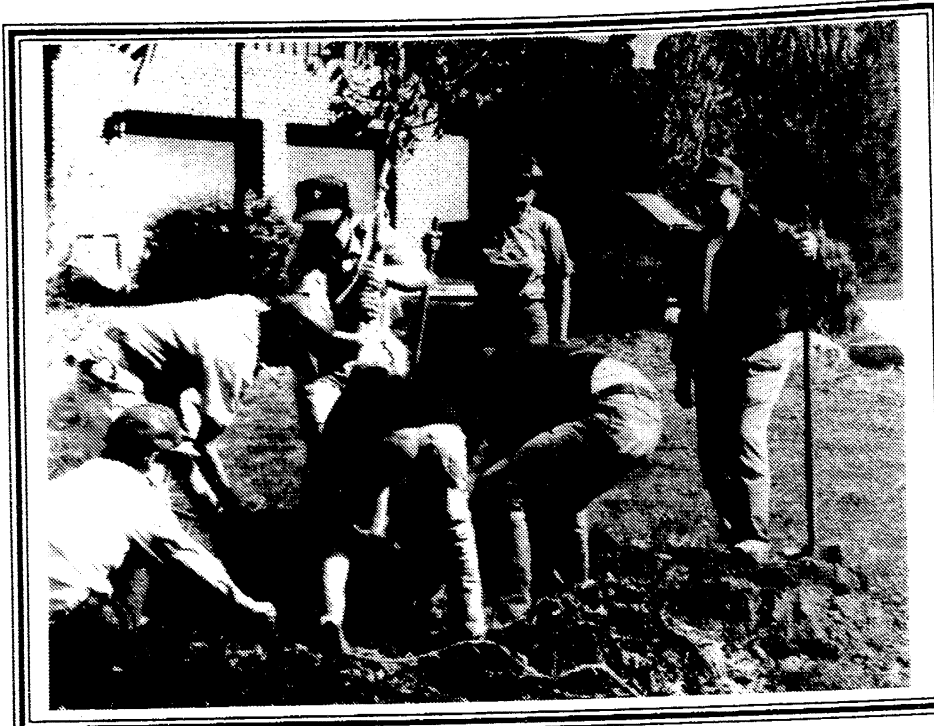


The classifieds are always a safe bet for buying, selling, and finding.
So stop scrambling around and put your eggs all in one basket!
Come to the one source for everything.
The Manchester Enterprise

Arbor Day

A Tree Grows in Riverbend

The Manchester Village Tree Board proudly announces the implementation of our first project, the planting of nineteen trees in the Riverbend Subdivision. The Village of Manchester is providing 50% of the cost (including three years of maintenance). The U.S. Small Business Administration is providing the other 50% through a grant administered by the Michigan Department of Natural Resources.



On Saturday, May 14, the Tree Board held a tree planting ceremony on Riverbend Drive. Special thanks go out to the Boy Scouts and Dave Roberts, their Scoutmaster, who assisted with the planting, as well as to the DPW crew who made a special effort to ensure that all was ready for the tree, a Bradford Pear, to be planted. The remaining eighteen trees, which include more Bradford Pear, White Oak, and Hackberry, will be planted by the DPW

during the coming week. These beautiful trees were delivered by Underwood Nursery in Adrian.

The Tree Board has five members: Bill Kwolek,

Chairman; Dave Chartrand, Permits; Tom Kallewaard, Finance; and Jane Cooper, Jack Conaway is the Village Council representative who attends Tree Board meetings

Fish For Pond Stocking

Delivery: Thursday, June 2
Atlas of Manchester
11:45 am - 12:45 pm 428 - 7077
Minimum Order of 25 Fish
We Furnish your Hauling Containers
To Place an Order Call 428 - 7077 or 1-800-247-2615
(Orders do not have to be placed in advance)

and communicates concerns between the two groups. Sybil Kolon is the Community Forestry Consultant who advises the Tree Board and maintains the inventory on computer. Citizens should feel free to contact any of us with questions or ideas.

The Tree Board was formed two years ago to plan and oversee the care of trees located along our streets. The recent inventory of the right-of-ways pinpointed over 1500 live trees and more than 200 locations which need planting. All this is preparatory to the village being named a "Tree City USA".

A program has been developed to manage the planting, pruning and necessary removal of trees for which the village has responsibility. Manchester has been divided into specific neighborhoods, and management priorities are being developed for each one. The Riverbend subdivision was identified as being the first neighborhood to receive new trees, due to the high percentage of available planting sites.

We currently have a vacancy on the Tree Board and need a volunteer. You don't need any special expertise to serve, only a concern for the village and its trees.

Although this year's turnout was small, the Board is already looking forward to next year's Arbor Day Celebration, and planning how to make it bigger and better. Watch for more news about the Tree Board as we begin more projects for the future. -MJC

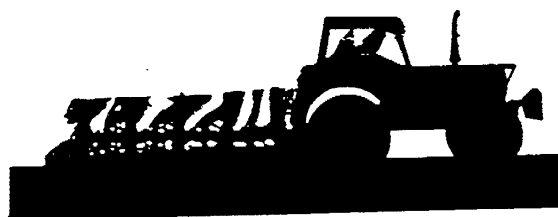


Extend Your Investment. Use Amoco Quality Products.

Amoco Premier Diesel Fuel (APDF) — Lubricity and a Whole Lot More APDF provides the fuel lubricity your diesel fuel system needs for normal, trouble-free operation. With APDF, you don't need to use expensive, aftermarket lubricity additives which some manufacturers recommend for low-lubricity, low-sulfur fuels. APDF's exclusive D-Guard multi-purpose additive package not only helps increase fuel lubricity, it also helps protect your fuel system from corrosion, filter-plugging and build-up of gums and resins. And, APDF's high 50-octane rating helps your engine start quickly and warm-up smoothly.

Amoco Quality Lubricants — For Added Protection Amoco has a full line of motor oils and lubricants designed to help protect your farm equipment and to help increase your fuel efficiency. Amoco Premier II is designed exclusively to boost diesel engine performance, with additives to extend engine life and cut oil consumption. Amoco 200 and 300 motor oils are multipurpose oils that provide the performance in both gasoline and diesel engines that you have come to expect from Amoco. And, Amoco 1000 transmission/hydraulic fluid offers high-level protection for hard-working gears and pumps.

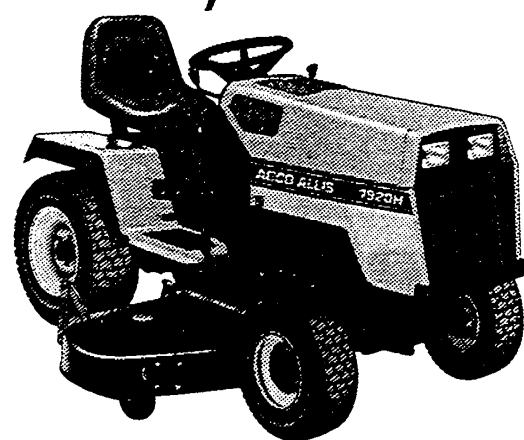
Use Amoco Quality Products You've invested tens, perhaps hundreds, of thousands of dollars to build a successful farming operation. So, use quality Amoco fuels and lubricants to help protect that investment.



G. E. WACKER INC

Serving You Since 1932 Family Owned & Operated
Amoco Oil Products • Fuel Oil • Gasoline • Diesel Fuel • Lubricants • Propane Delivery
• Budget Plan • Automatic Delivery • Transport Loads
1-800-535-5949 428 - 8366
Corner M-52 & Pleasant Lake Rd.

Simply pick up one of these, and you'll pick up \$1,000.



With 20hp Kohler engine and hydrostatic transmission, the 1920H garden tractor will make yard work easier. Buy one now and you'll also receive a \$1,000 instant rebate.* Stop in and see one today. The 1920H. Only at your AGCO Allis dealer.

*Ask your dealer for complete details. Limited time offer.

DIUBLE FEEDS, INC.
4441 S. Parker Rd., Ann Arbor 994 - 1313
Minutes from Manchester
Sales • Service • Parts

Money Management Matters: Make Sure Your Credit History is Error-Free

prepared by the Michigan Association of Certified Public Accountants

Before you apply for a mortgage loan, car loan or other credit, the Michigan Association of CPAs (MACPA) recommends that you take the time to check your credit record. It's not uncommon for credit reporting agencies to make errors on your credit record. As a result, potential lenders may get the mistaken impression that you are a bad credit risk and reject your credit request.

Obtaining Copies of Your Credit Report

The credit history of most Americans is recorded by three large national bureaus: TRW (1-800-682-7654), Equifax (1-800-658-1111) and Trans Union (216-779-7200). TRW will provide you with one free report annually. The two other national bureaus, Equifax and Trans Union, will also provide you with a copy of their report for a small fee, usually under \$10. However, if you are denied credit because of information in your credit history, these agencies are obligated to send you a free copy of the problem report within 30 days of your request.

When requesting a copy of your report, you must provide your name, current address, addresses for the past five years, social security number and year of birth. If you are married, even if you and your spouse have joint credit accounts, you can only obtain individual reports.

What's Included in Your Credit Report

Your credit report includes certain biographical data such as your social security number, age,

employer and current salary. In addition, it contains specific credit information gathered by various private companies and lending institutions. This includes outstanding credit card balances as well as automobile loans, government-backed student loans, small business loans and lines of credit. The report also indicates how promptly you pay these loans—key information for a potential lender. Additionally, bankruptcy filings, tax liens and sometimes even divorce settlements are noted in the report.

Under federal law, adverse credit information can only be kept on your report for seven years, except for bankruptcy entries, which are listed for 10 years.

Typical Errors
There are a wide range of errors that may turn up in your credit report. Some of these may occur at the credit bureau and others are a result of a creditor or other provider supplying misinformation.

The most common errors made by credit bureaus are minor, such as reporting an incorrect social security number, date of birth or employer.

These items are not likely to jeopardize your ability to obtain credit. Credit bureaus also have been known to mix up credit files. For example, your credit history could include accounts of a relative or another individual who has a similar name.

Creditors may also provide erroneous information, such as

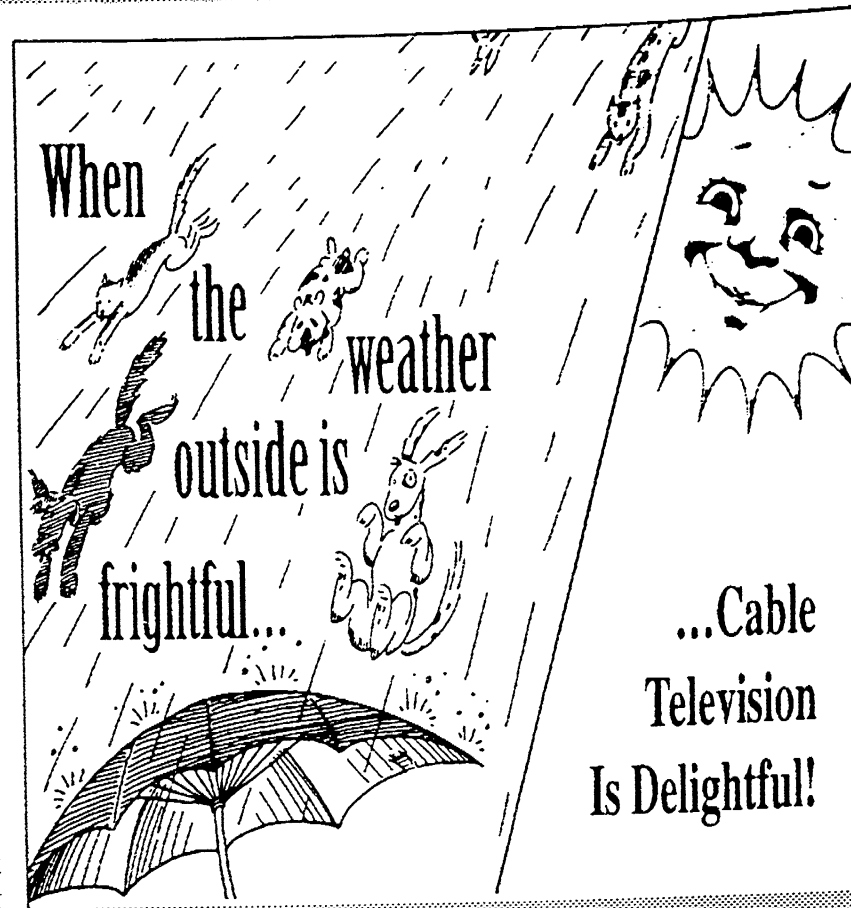
indicating a failure to make timely payments or reporting closed credit card accounts as open. In the latter case, potential new creditors may get the impression that you already have too much credit available and thus reject a new credit application.

How to Correct Errors

As soon as you notice an error in your credit report, contact the credit reporting agency. Usually it's best to explain in writing how items need to be corrected. If you have difficulty getting credit bureau customer-relations personnel to correct credit bureau errors, try writing to senior management at these companies. To expedite the process, provide proof that your assertions are correct, such as documentation indicating that you closed an account or a copy of a birth certificate showing you would have been too young to open an account which is being attributed to you.

The credit bureau will contact creditors who supplied the questionable information on your credit report. The MACPA recommends that you also contact these creditors yourself and ask them to notify the appropriate credit bureau about the error and how it should be corrected. This should convince the credit bureau to change your records.

It's in your best interest to request copies of your credit report from the three large agencies and to contact each of them about errors or other information that may need to be changed.



Deluxe Cable Installation Now Just \$7.95 Save up to \$28.59
Call: 429 - 4923 in Saline
CLEAR CABLEVISION 1-800-684-4600 All other areas.
Offer expires May 31, 1994. Some restrictions may apply.

Manchester Co-op Preschool
Enroll Now for FALL
For Information Call Cathy Peasley 428 - 7601

Tim's Lawn Care
313-428-7001
"The Lawn Ranger"

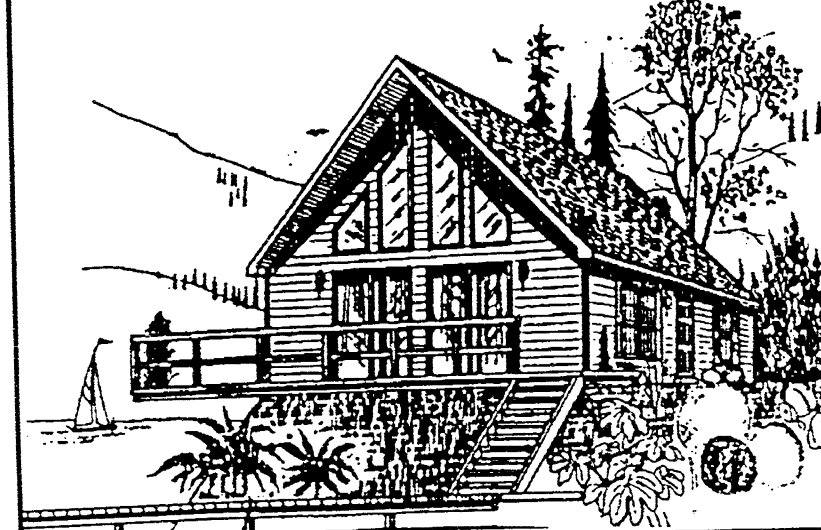
- ORGANIC FERTILIZER OFFERED
- 12 YEARS EXPERIENCE
- LICENSED — STATE OF MICHIGAN
- CERTIFIED — STATE OF MICHIGAN
- INSURED
- A COMPLETE BALANCED FERTILIZER PROGRAM FOR YOUR LAWN

A WELL FED LAWN IS A HAPPY LAWN

Call Now For A FREE Lawn Analysis and Estimate 313-428-7001

"The Lawn Ranger"

Select Homes of Jackson, Inc Presents The Vacation Home



MODEL # 504 THE WOODSMAN

OPEN HOUSE: Wed, May 18 - Sat, May 21

- Floor Plan Options
- Model on display
- Affordable as 3 bedroom - 2 bath or 2 bedroom - 1 bath
- Suitable for narrow lots
- Quality construction and energy efficient
- We offer financial services

Hours: 5370 Ann Arbor Rd.
Mon & Wed 10 - 6 Jackson, Mi 49202
Tues & Thurs 10 - 8
Fri & Sat 10 - 5 517 - 764 - 6670

Garage Sales
See Classifieds page 14



LAWN PROBLEMS?
SPRING APPLICATION TIME IS NOW!
Crabgrass control • Lawn Fertilization and Weed Control • Core Aeration • Grub Control • Deep Root Feeding for Trees & Shrubs

UNDERWOOD'S
Lawn Care • Tree Care • Landscaping • Nursery

Ask for Mark
1-800-841-8873

Church News

EMANUEL UNITED CHURCH OF CHRIST

Wednesday, May 18: 6:00 pm Bell Choir; 7:00 pm Church Council; 7:30 pm Adult Choir

Thursday, May 19: 12 Noon Senior Meal; 6:00 Cub Scouts; 6:30 pm Brownies

Friday, May 20: June newsletter deadline

Sunday, May 22: 10:30 am Confirmation Sunday Worship, Communion; 11:30 am Fellowship time.

Monday, May 23: 6:30 pm Optimists

Tuesday, May 24: 12 Noon Senior Meal; 7:00 pm Boy Scouts

Wednesday, May 25: 6:00 pm Bell Choir; 7:30 pm Adult Choir

ST. MARY CATHOLIC CHURCH

Thursday, May 19: C a t e c h i s t Teachers Meeting, 7:45 pm

Saturday, May 21: Children's Choir, 3:30-4:45 pm Sacrament of Penance, 4-4:45 pm

Sunday, May 22: Adult Choir, 9:30 and after 10:30 am Mass

Monday, May 23: Girl Scout Troop 706, 3:30-5:30 pm

Wednesday, May 25: Chicken & Biscuit Luncheon, 11 am to 1 pm

BETHEL UNITED CHURCH OF CHRIST

Wednesday, May 18: 12 noon, Seniors of Bethel Potluck

Friday, May 20: Nancy Haeussler & Don Hieber wedding

Sunday, May 22: 9:30 am Worship service Strengthen the Church all Church offering; Sunday School, 3 & 4 & Kindergarten; 10:30 am Sunday School Grades 1-8; 2:00 pm Senior Youth Fellowship; 7:00 pm Adult Fellowship.

Tuesday, May 24: 7:30 pm Experience in Practical Christianity.

ZION LUTHERAN CHURCH, CHELSEA

Wednesday, May 18: 7:30 pm Pastoral Concerns.

Thursday, May 19: Search Bible Study 1:30 & 7:30 pm

Sunday, May 22: 9:00 am Sunday School for ages 3-adult;

10:15 pm Worship; Youth Group Get-together (3-6 graders)

Tuesday, May 24: 7:15 pm Senior Choir

Wednesday, May 25: June Newsletter Deadline; 7:00 pm Stephen Ministry Training.

MANCHESTER UNITED METHODIST CHURCH

WEDNESDAY May 18 11:30 a.m. U.M.W., 7:30 a.m. Care & Share

THURSDAY May 19: 7:00 p.m. Committee mtgs. 7:30 p.m. Adult Bell Choir 8:00 p.m. Ad Council

FRIDAY May 20: 7:30 p.m. Young Adult Fun Night

SUNDAY May 22: 9:00 a.m. Sunday School, 10:30 a.m. Northville Youth Musical, 'DECIDE' - community welcome

MONDAY May 23: 3:15 p.m. Scouts

TUESDAY May 24: 3:15 p.m. Scouts 7:00 p.m. Washenaw County Food Program

WEDNESDAY May 25: 7:30 p.m. Bible Study

The United States government paid two cents per acre for Alaska, and twenty-seven cents per acre for the Philippines.

Good bargains? Indeed! But I've got something better - a clear title to a place that didn't cost me anything.

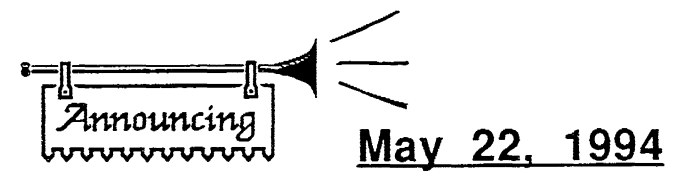
It's a healthy country. It's a place without disease and death.

It's a happy country. It's a place without troubles and tears.

It's a holy country. It's a place without Satan and sin.

It's a homey country. My Donor said, "There are many homes up there... I am going to prepare them for your coming."

Care to come? Then receive the Lord now, won't you? And heaven will be your home too.



May 22, 1994

10:30 a.m. Manchester United Methodist Church 501 Ann Arbor St.

90 Youth from the Northville United Methodist Church presenting their musical...

"DECIDE!"

The community is welcome to attend this exciting and inspirational event!

THE CHURCH PAGE IS BROUGHT TO YOU THROUGH THE FOLLOWING SPONSORS

Table with 5 columns of sponsor names and logos, including Reno & Nancy Feldkamp, DAN'S WESTSIDE AUTOMOTIVE, David Chartrand, WACKER'S GENERAL STORE, Keith's Barber Shop, etc.

Obituaries

JOHN B. SWAINSON

Governor John B. Swainson, 68 of Manchester, passed away on May 13, 1994.

John was born in Windsor, Ontario on July 31, 1925 the son of John C. & Edna (Burley) Swainson. At the age of 9 mon. his family moved to Port Huron, MI where John grew up, and as a member of the Bluewater Council of Boy Scouts of America he earned scouting's highest award, Eagle Scout.

After graduation from high school John entered the U.S. Army and served in the European theater under General George S. Patton. As the result of wounds received during the assault on Metz, in France John lost both legs and was awarded the Purple Heart.

Upon discharge, John entered Olivet College where he met and married Alice Nielsen on July 21, 1946. John and Alice later moved to Chapel Hill, N. Carolina where he completed his work for an A.B. degree in political Science and earned his L.L.B. Degree. In 1951 they returned to Detroit where John entered Law School. In 1954 and again in 1956 he was elected State Senator from the 18th district. In his second term he was selected as minority leader of the Senate. In 1958 John was elected to the Office of Lieutenant Governor of Michigan and became President of the Senate.

In 1960, at the age of 35 John was elected as Governor of the State of Michigan, the second youngest ever to be elected to that office. In 1965 he was elected Circuit Court Judge in Wayne County, where he sat for 5 years. In 1970, he was elected to serve on the Michigan Supreme Court where he served until retirement in 1975. John and his family moved to Manchester in 1970 but he stayed active in State Government with appointments by Governor James Blanchard and Governor Engler to the Michigan Historical Commission, where he was serving as President.

John was a Life member of the D.A.V. and V.F.W.. He is Past President of Manchester Historical Society. He also was a member of Emanuel United Church of Christ in Manchester. Besides his wife, Alice, John is survived by his father, John A.C. Swainson of Chelsea, a daughter, Kristina Ann & (Louis) Way of Manchester; 2 sons, John Stephen Swainson of Santa Fe, New Mexico and Hans Peter Swainson of Groton, Conn; two grandchildren, Andrew & Allyson Way, both at home; a sister, Carroll Whitehead of Okemos, MI; a brother, Thomas Swainson of Port Huron; several nieces & nephews. He was preceded in death by his Mother.

The Swainson Family received callers at the Jenter-Braun Funeral Home, Manchester on Sunday from 7-9 PM and on Monday from 2-4 & 7-9 PM. Funeral services for John will be held on Tuesday, May 17, 1994 at 11 AM from Emanuel United Church of Christ. Interment will be in Oak Grove Cemetery. In Lieu of flowers, the Swainson family requests memorial contributions be made to Manchester Fire Dept, Emanuel United Church of Christ, or Manchester Historical Society.

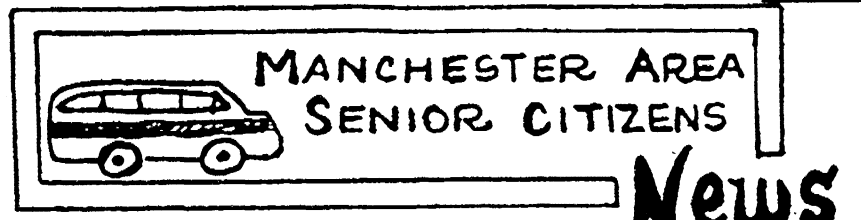
HELEN LORETTA WEBER

Helen L. Weber, age 68, died suddenly on Friday, May 13, 1994 at Chelsea Community Hospital. She was born on July 21, 1925 in Newburgh, NY, the daughter of John & Nettie (Williams) Grattan.

Mrs. Weber has lived in the Chelsea area since 1947, coming from New York. She retired from Chrysler after 15 years of service. She married Albert L. Weber in Maybrook, NY on September 16, 1944, and he survives. Other survivors include three daughters, Nancy (James) Heydlauff of Chelsea, Linda Sue Weber and Cathy May Weber, both at home, one son, Michael L. (Judith) Weber of Manchester, two sisters, Ruth William of Walden, NY and June Miller of Newburgh, NY; one brother, Kenneth Grattan of Walden, NY, and two grandsons, Jim and Ron Heydlauff.

Funeral services were held Monday, May 16, 1:00 pm at Cole Funeral Chapel with Rev. James Massey officiating. Burial will follow at Maple Grove Cemetery, Chelsea. The family received friends Saturday 7-9 pm and Sunday 10 am to 9 pm. Memorial contributions may be made to American Heart Association.

Senior Citizens



News

by T.V. Ludwick

We were saddened last Friday (the 13th) to hear of the passing of our friend, John Swainson. We extend our prayers to Alice and family and to John's. Senior Council members will remember his help and expertise in solving some of their problems and he was always a willing participant. John was a kindred spirit in our community, helping out whenever possible. His humor, wit and wisdom quickly brought order to meetings which often got off the topic and no one could do it as well. Godspeed, friend!

Thursday, May 19: No craft class today. At our lively tables in Emanuel's dining room, we will enjoy pork roast at noon. If you'd like to join us and you are 55 or older, first call either Linda (ahead) at 428-8359, or on meal days to Jan at 428-7630 before 10:30 AM. Bingo is usually played at the Center on Thursdays at 12:30, come on over.

Friday, May 20: Bus pickup begins at 6 PM to journey to the Saline Senior Citizens' Card Party. To reserve your spot on the senior bus, call Erma Alber at 428-8707 for this or other trips scheduled.

Sunday, May 22: Manchester Township Hall & Fire Station will hold a Mortgage Burning Ceremony at 2 PM and you are cordially

invited. Does it seem to us old timers that it was just yesterday when it was built (and we were so proud of it)? Still are---

Tuesday, May 24: Our local nurse, usually Jo Simmons, will be on hand to take our blood pressures at 11. And then, Jan and crew will serve up "Chicken Someway" for our pleasure. Jan's wit is also appreciated and we await the possible choices which are offered. What other way can she fix chicken? Come and see. No speaker is scheduled for 12:30.

Wednesday, May 25: The Craft Class will leave the Center for a potluck at the Farm at 10:30.

Thursday, May 26: Meat loaf (yummy) is on the senior lunch menu at 12 noon, with bingo to follow at the Center. Senior Citizens' sponsored card party begins their fun filled activity at Freedom Township Hall at 7:30 and you are invited (any age). Bus pickup starts at 6 PM and you may call Erma to go along.

You may deposit your Ronald McDonald items in the boxes provided at Great Lakes Bancorp. Their Wish List headings are: Food; Office Supplies; Cleaning Supplies; Household Supplies; and Miscellaneous. Space does not allow us to name each article, but you may get a detailed list from President Rubena Boelter.

Arthritis Update: Green Thumb? Don't Let Arthritis Stop You

An Arthritis Foundation survey shows that many of the 37 million Americans with arthritis enjoy gardening more than any other activity. However, arthritis pain and limited joint mobility often make gardening difficult.

You can use a variety of adaptations and tools to help make gardening easier and more productive. The Arthritis Foundation recommends these simple changes: • To reduce stress on joints, sit on a small stool instead of kneeling; • Plant in small raised garden beds or planting containers for less bending and stretching; • Wear an apron with pockets to carry trowels, clippers and other small hand tools; • Avoid gripping or grasping tightly for very long periods. Divide work into smaller segments over longer time periods; • Use the strongest or largest joint possible to do the work.

Many tools are available to help people with arthritis protect joints and conserve their energy while gardening, including: • Basic gardening tools, such as a trowel or hoe, with extension handles to reduce bending; • Swivel-handle attachments for shovels and two-hand attachments for rakes, hoes and pushbrooms to help prevent back strain. To learn more ask your local Arthritis Foundation chapter for a free copy of "Using Your Joints Wisely." For general information and a free "Basic Facts" brochure, call the Arthritis Foundation Information Line, 1-800-283-7800. The Arthritis Foundation supports research to find ways to cure and prevent arthritis and seeks to improve the quality of life for those affected by arthritis.

Faist-Morrow the place to go for new or used vehicles "Where the QUALITY Used Cars Are" 1500 S. Main St. Chelsea 475-8663

TROPICAL EFFECTS Tanning Salon 20436 E. Austin Rd. Featuring the Wolff System 428-0504

The Manchester Township Board and The Manchester Township Fire Department invite you to attend the Mortgage Burning Ceremony of the Township Hall and Fire Station 275 S. Macomb Sunday, May 22, 1994 2:00 PM Open House following the ceremony

Chester Painters 21st ANNUAL CHELSEA PAINTERS ARTFEST SAT JUNE 4 & SUN JUNE 5, 1994 10 AM - 5 PM at the CHELSEA MEDICAL CENTER just off M-52 in Chelsea, MI ENTERTAINMENT by Dusty Rhodes REFRESHMENTS sponsored by C.C.H. Auxiliary % of sales donated to the Palmer Medical Scholarship

Manchester Dairy Queen May 22-29 Medium Size SUNDAES 94¢ plus tax HOT EATS COOL TREATS Dairy Queen Spring Hours Mon-Thurs 10:30-9:00 Fri-Sat 10:30-9:30 Sun 12-9:30

Canoe Race



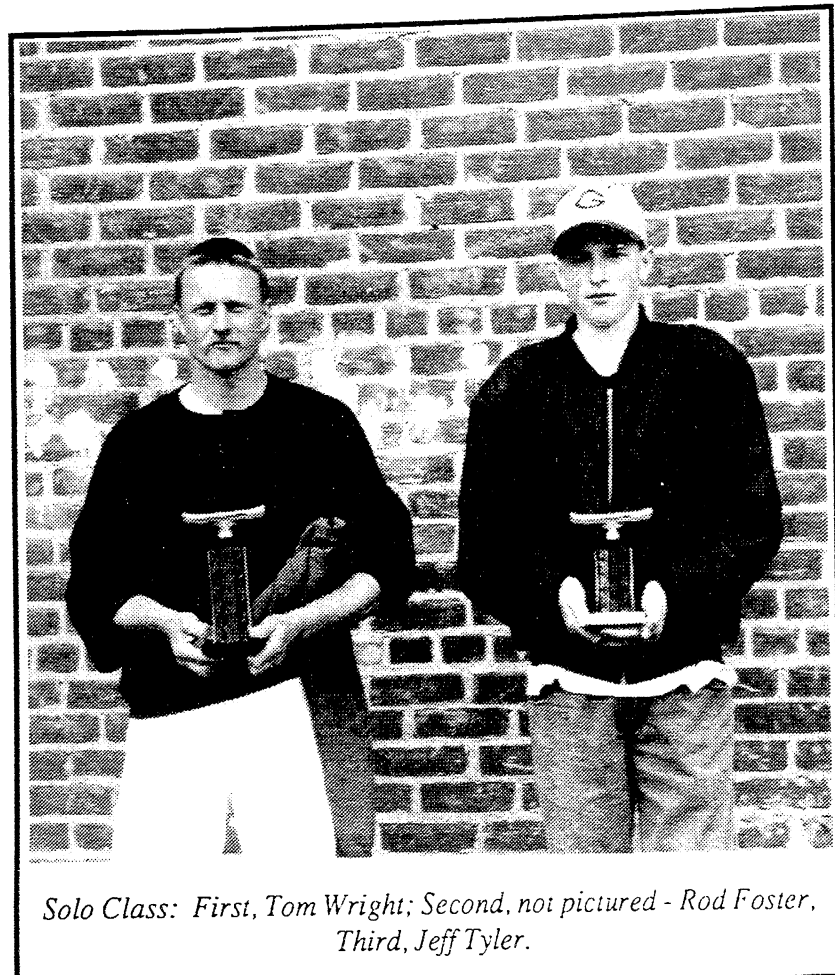
Adult/Child: Robert & Benson Kellum, first place; Mike & Shon Krzyzaniak, second; William & Jason Brinkman, third.



Women's Class: Margaret & Grace Bialecki, first place; Carol Andonian & Jill Esch, second place; missing - Sue Ann Kirkby & Charlotte Major, third.

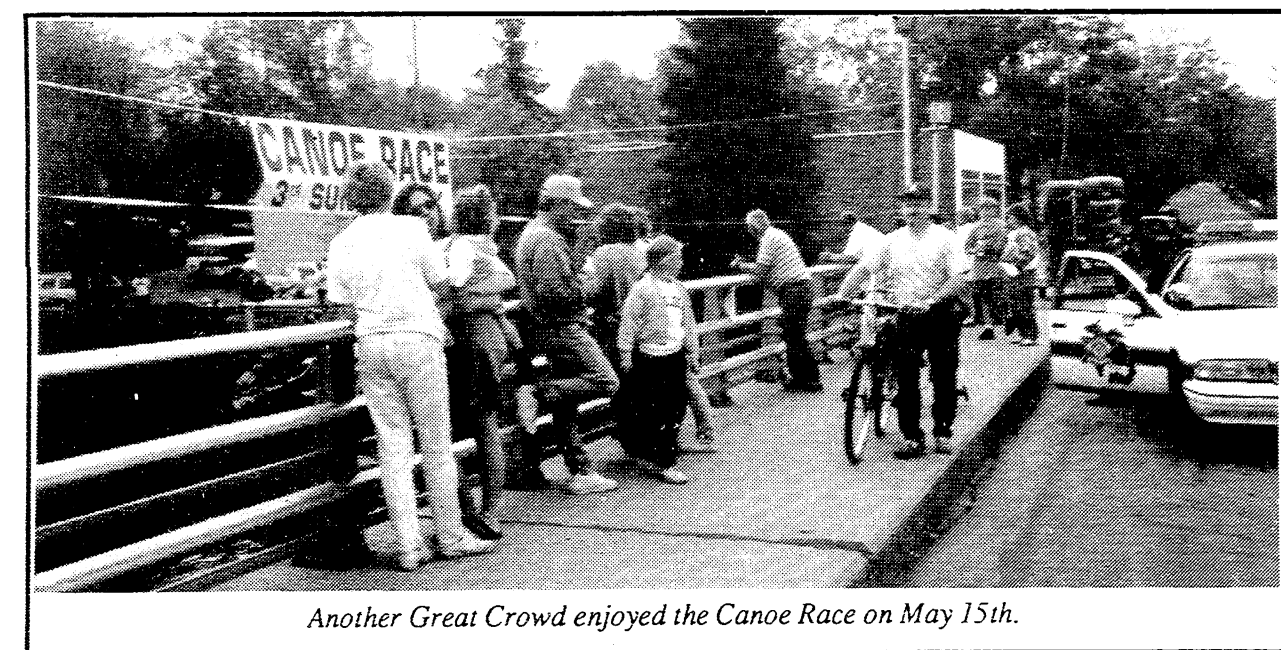


Sprint Race Winners: Tom Wright & Bill Fick



Solo Class: First, Tom Wright; Second, not pictured - Rod Foster. Third, Jeff Tyler.

The day was crisp, the weather was just a little overcast and rain was in the air, but for the 28th year the river was crowded with a joyous crowd of happy paddlers!



Another Great Crowd enjoyed the Canoe Race on May 15th.

CONGRATULATIONS TO ALL PARTICIPANTS

Special of the Week
FLATS \$6.49*

* Impatiens & Begonias \$9.00 a flat
Most Hanging Plants \$10

CHELSEA GREENHOUSE
475 - 1353
7010 Lingane Rd. Chelsea
Serving the Public since 1901
Mon - Fri 8am - 7pm Sat 8am - 5pm
ALL PLANTS GROWN IN OUR GREENHOUSES

Manchester Trusts
UNDERWOODS
NUSERY • LANDSCAPING • LAWN CARE • TREE CARE

Acres of Trees & Shrubs • Unusual Dwarf Trees and Flowering Plants • Evergreens
We Make House Calls!!

DESIGN • DELIVERY • PLANTING

"Ask for Mark"
1-800-841-8873
4373 North Adrian Highway (M-52) • Adrian
Minutes from Manchester

FLAG POLES

For home and yard
WOOD, STEEL & ALUMINUM POLES
-ALSO-
U.S. & FOREIGN FLAGS

FOX TENT AWNING CO.
617 S. Ashley, Ann Arbor
(313) 665-9126

Canoe Race

28th Annual Canoe Race

by Dianne Schwab

The Manchester Recreation Task Force is thanking all who helped, participated or watched the 28th Annual Canoe Race. You folks set an all time record with 65 registered craft. Several people liked it so much that they went down the river twice. The Rainmaker blessed us again with a refreshing downpour and cooled off those who were getting too warm.

The Canoe Race committee had to make some more identification numbers at the last minute, even with all the advance planning and studious activity that has been going on for months. Everyone had a number and the races flowed along with the rapid current.

The Men's Club really deserve our appreciation for the fine job they did removing obstacles from the river. The Boy Scouts cleared the dense brush from the east side of the millpond so that every-



Canoe Race Committee: Back, L-R: Tim Brown, Mike Briggs, Dennis Kittel, Bill Peterson, Bill Schwab. At table, L-R: Jared Donnellon, Judy Kuntz, Dick Kuntz. Absent: Phil Maly, Chris Brooks.



Choose Partner: Bill Black & Harold Jahnke, first place; Tony Pruitt & David Melville, 2nd place; missing - Jacques LaRocque & Shawn LaRock, third

one could have a clear view of the canoes as they made their final sprint for the finish line.

The Task Force and the community of Manchester also owe special thanks to Ted Stautz. He has helped with the Canoe Race all 28

years except maybe two. He has been the master dock builder for at least 20 years. His dock makes it much easier for tired racers to get out of the canoes and get the canoes out of the water in a timely fashion.

Thanks to Sharon Hollow

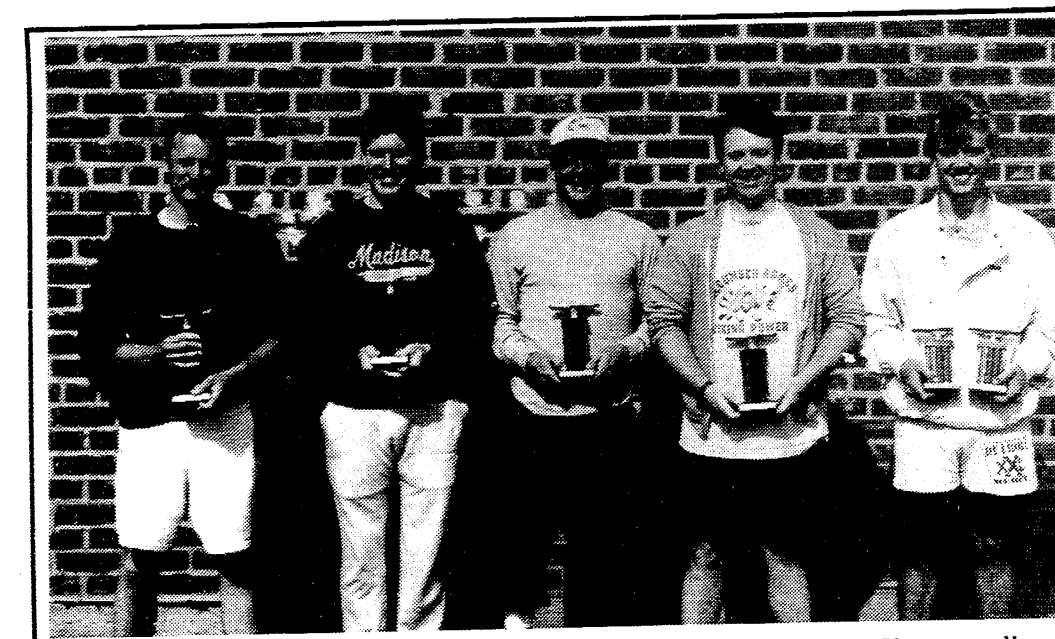
Acres Canoe Livery for making canoes available to use and also for their help clearing the river.

Thanks again to our application locations: the Community Resource Center, Manchester Pharmacy, Movieland, and Pyramid Of-

fores Supply; and to Eden Foods, Comerica-Ann Arbor, Comerica-Manchester, Canoesport, Dairy Queen, First of America, Great Lakes Bancorp, KJK Craftsman, Manchester Pharmacy, Midwest Ford and the Model Shop for sponsoring the trophies.



Man & Woman Class: First place, Karen & Tom Glover; Second Place, Dennis Kittel & Carol Kahn (& Rossi); Third Place, Deborah & Klaus Wolter



Competition Class: First, Tom Wright & Kevin Salters; Second, Scott Kampmuller & Richard Cangley; Third, Heath Pagel & Mike Maisano

ATLAS HAS IT ALL

Annuals
Perennials
Hanging Baskets
Bedding Plants
Rose Bushes
and so much more

ATLAS of MANCHESTER
18875 W. Austin Rd. 428 - 7077
Mon - Fri 9 - 6 pm Sat 8 - 4:30
*Stop by the Perennial Exchange - Sat. May 21 at TATE Park in Clinton 10 - 2

SUBSCRIBE TO
The Manchester Enterprise

Keep up with the weekly
Community News

Washtenaw County - \$15/yr.
Outside Washtenaw - \$18/yr.

NAME: _____

ADDRESS: _____

CITY/STATE/ZIP: _____

Stop by at 109 E. Main or
call us at
428-8173



A Good Selection of
New and Used Cars
On Our Lot

TIRB
CHEVROLET & GEO
Don't Get Disturbed..See Tirb!
A Metro Detroit Chevy Dealer
313-428-8212 • Manchester

Schools

**Board of Education
Candidate Profiles, Continued**

**Middle School
Fundraiser**

by Jayme Haskins, Laura Meyer,
Justin Turk

The Student Council/Boosters 1994 fund-raiser was a great success. The students sold candy, nuts, and chocolate. It began the week before spring break and has just ended. The students were anxious to sell to be part of an incentive drawing. For every 10 items sold, students were eligible to pick one envelope. Envelopes contained cash, T-shirt certificates, or homework passes. The school has benefited in the past by purchasing 2 CD ROM encyclopedia systems, curtains for the stage, supporting the eighth grade dinner dance, and supporting the Student Council. Overall it was not only successful but fun.

**School Lunch
Menu**

Monday, May 23: Submarine Sandwich, Potato Chips, Dill Pickles, Pineapple Tidbits, Milk.

Tuesday, May 24: Savory Beef, Whipped Potatoes, Green Peas, Dinner Roll & Butter, Pear Half, milk.

Wednesday, May 25: Burrito, French Fries, Tossed Salad with dressing, peaches, milk.

Thursday, May 26: Ham & Cheese on a bun, Pork & Beans, Carrot Sticks, brownies, milk.

Friday, May 27: Tacos/Sauce/lettuce/tomatoes/cheese, Refried beans, corn, fresh fruit, milk.

Patricia Sahakian

Do you feel there is an overcrowding problem in the schools? We have studied the Klager overcrowding issue for four years. We know that adding onto Klager is the best solution both in terms of cost effectiveness and in providing a quality centralized educational program. Every year we delay this project we compound the problem as we see interest rates cycle upward, building costs rise and watch the large enrollments move towards the Middle School.

What is your opinion of the new school finance reform laws? I have a wait and see approach regarding the enormous amount of legislation passed on school finance and school quality in December of 1993. I am more interested in how the laws will be applied and interpreted. For example, as of April 29th, the amount of a farm that is considered a homestead was still undetermined. This decision will have a major impact on Manchester and the June 13th millage on commercial property and second homes.

Joseph Turk

How can the School Board benefit from your presence? My position as a Department Manager at Ford Motor Company has given me a clear insight into the employment expectations for today's highly automated manufacturing plants. There is a clear requirement for employees to have sound science, math, reading, statistical, team problem solving and interpersonal skills learned that the quality of the product manufactured or education

delivered is significantly enhanced by the level of teamwork. In education, the teamwork is between the parents, student, school personnel and the community. The more individuals who can be involved in setting direction, the greater the number of ideas discussed and the higher the quality of the actions. Because of the time I have spent in team efforts at work, I believe I have developed the ability to see different points of view and have learned how to help forge a common plan of action.

Your top three priorities? A. Curriculum development sometimes gets lost in the discussion of school financing reform and facility needs. However, formal education of our children happens in the classroom setting. The curriculum is the road map for the information taught. The demands by employers for our children to master special skills is increasing. As an example, these new demands can be seen in new outcome requirements by the State Board of Education and significantly revised MEAP tests. In fact, successful achievement of the MEAP test is required to receive a state endorsed diploma. There has been some very positive work done on the curriculum by our school staff. However, much still remains and in reality it must be a continuously improving process. It is critical the curriculum be linked from Kindergarten to 12th grade to maximize the subjects covered in an efficient manner. Every year is a building block for the subsequent years. In addition, we cannot afford a separate course for every topic. As an example, reading can not just be taught in English Class. Students need to learn how to read and comprehend science textbooks. Team problem solving and critical thinking skills need to be part of every curriculum area. Good citizenship is not just a Social Studies subject but needs to be part of every classroom setting and the athletic program. I believe there is a lot about the school curriculum that should make us proud. However, the potential for more and continuous improvement to the curriculum is exciting. B. Over the past years a lot of work has taken place to cut cost without affecting the quality of the programs offered. There has been an involvement of the staff in brainstorming and prioritizing actions. The number of community members who volunteer their time has increased.

The administrators have looked for ways to reduce their budgets. While there has been a reform in the way we finance our schools state wide, it does not eliminate the need for continued cost savings efforts each year. C. During the next school year, the Board needs to finalize the plans to ease the overcrowding at Klager elementary. Currently there are three portable classrooms and a portable classroom for music instruction. For the 1994/5 school year there is a strong possibility that another classroom will be required. The support spaces, library, lunch room, computer room, special education and storage are over extended. Now, we need to wait for resolution of state wide school funding. Next year, we need to decide what changes need to be made to help the Klager students.

Do you feel there is an overcrowding problem in the school? I do believe that there is a problem with overcrowding, especially at Klager. When you visit the building and view the portable classrooms and cramped spaces, there is a sense that some changes are needed.

The past months have not been the best time to finalize and discuss plans for Klager. Each of us needed to stay focused on the changes in state-wide school financing. As a community we need to finalize our plans during the 1994/5 school year, and start to go forward.

Mike Gleason

Do you feel there is an overcrowding problem in the schools? I do not know if there's an overcrowding problem in our schools. The student population numbers that I've seen do not indicate a problem, but I've heard that there's a problem coming up at Klager school. The superintendent again this year has said that student projections are up. These student projections so far have failed to materialize. We need to see that the overcrowding condition is real. We need to see a plan to address it with existing funds. We need options.

The administration has been authorized to have another bond proposal drawn up. I oppose another tax increase for these reasons: 1. The administration has not documented the overcrowding problem or the need for a building program. 2. I feel that we should not spend money again to create a bond issue before carefully considering alternatives to that bond issue, such as considering the re-use of Pleasant Lake School, as suggested by a

Board member. 3. We have board members with good ideas for dealing with this issue. I heard one that makes about six classrooms available, by moving the administrative block. We need to carefully study these ideas, not ignore them. Let's look at a plan that doesn't involve more tax. 4. This is not a good time to ask the voters for more tax money, just after the Proposal A tax shift. 5. Going to the voters for more money isn't a good idea after just giving the administration a hefty raise. 6. It appears to me that the main energy of the administration and Board president is spent to pass a bond millage tax increase, rather than to deal effectively with an important issue - possible overcrowding.

Comforting assurances are nice, but it's more important to see what is happening. The majority of our school board has authorized payment to draw up a tax increase proposal. They have done that before considering alternatives to that bond proposal. I think we need a different school board majority.

Sonja Schulz

Do you feel there is an overcrowding problem in the schools? What solutions would you like to see to this problem? Yes, there is a space problem in our schools. Yes, the "Fab Five" had sound arguments for their "wait and see" mentality. We don't know how the budget will be, come next fall and yes we pay enough taxes as is.

It is too soon for a bond issue in September. We need to find how well we are off financially by then.

A solution has to be found to the problem, because it's the children who are paying the price for our inability community-wise to come up with a solution.

How many portables will we need? Where do we put them?

Should we turn Mrs. Henry's cubby-hole office into a classroom? Soon Mr. Schick and Mr. LeBlanc will be dealing with an enormous amount of children and their problems. The pressure and stress because of this problem is great on both sides. Now you know the real reason for their receding hairlines; it's out of frustration because there are too many kids and not enough space to put them.

If we can come up with a different solution other than a bond issue, great. It's going to take a lot of volunteers and donations if we do it on our own. Can we?

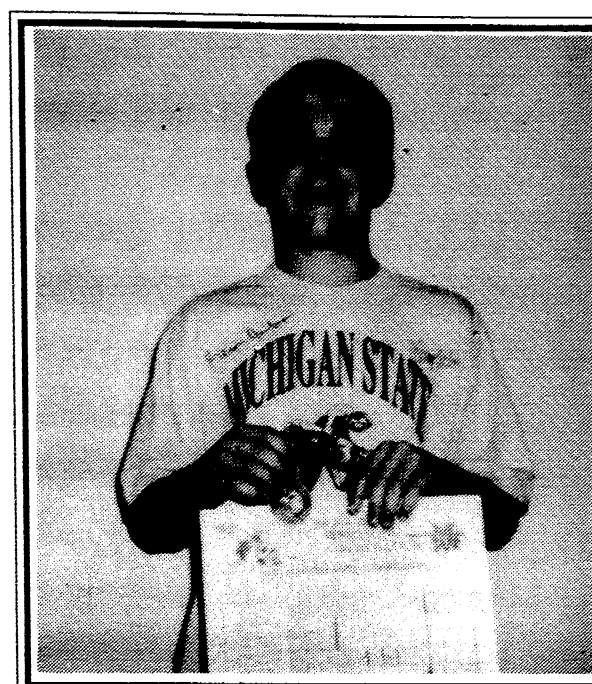
Sports

**Manchester Freestyle Wrestling
Jeremiah Tobias takes First**

Jeremiah Tobias traveled to Lansing on May 14 to compete in the Michigan Freestyle Wrestling State Meet, and just like regionals, he ended his day undefeated.

Wrestling began at 10:am with twelve kids in his weight class. Every match was tough, but he managed to overpower his six opponents and finish first in the State!

Jeremiah will be



in seventh grade next year and will wrestle for the Middle School team.

What a way to end our first official season of the Manchester Freestyle Wrestling Club! Many of our kids placed all season, all of them grew as athletes, and hopefully next year they'll all come back for more.

Thanks to all the parents and community members who supported the kids during the season.

WE PROUDLY ANNOUNCE



LEON G. BALL

HAS JOINED OUR SALES STAFF.

Leon joins us upon retirement from the Ford Motor Co. after 32 years of service. He was a supervisor for 27 years in various capacities. The last four years, Leon worked in Employee Relations as the head of Security and Fire Protection at the Saline Plastics Plant.

Leon and his wife Eileen are lifelong residents of Manchester. Eileen is the Office Manager for Manchester Electric. They have 5 grown children and 7 grandchildren. They are members of St. Marys of Manchester and have been active in community activities.

We feel Leon's experience and caring attitude are characteristics that will benefit you, our customer. Stop by and welcome him as he begins his new career.

THE "AWARD" WINNING DEALERSHIP
PALMER MERCURY LINCOLN
Michigan's Oldest Ford Dealer
OPEN MON. AND THURS. 'TIL 8. SAT. 'TIL 3 P.M.
SERVICE OPEN SAT. 'TIL 100
MINUTES AWAY - I-94 TO M-52
NORTH 1 1/2 MILES - DOWNTOWN - PLENTY OF PARKING
CHELSEA • 313-475-1301

**ATTENTION
BOWLERS**

The Manchester Gutter Dusters are looking for interested couples for the '94-'95 Bowling Season starting in September. This league is mixed & we bowl every other Saturday Evening. If interested

Please call
Lisa Fookes 428 - 0316
or Alan Hanewald
428 - 9113



We've expanded our staff to make it easier to meet your needs on the "RUSH" jobs that come up from time to time. For - Major appliance repair - Electrical work please give us a call!

Call us at
428-8243

ME
**MANCHESTER
ELECTRIC**
200 Riverside Drive
Manchester
Our 18th Year

**FREEDOM TOWNSHIP
SUMMER CLEAN-UP DAY**
Saturday, June 11, 1994
9:00 a.m. - 2:00 p.m.
Freedom Township Hall
11508 Pleasant Lake (at Lima Center)

- **Please Bring:** Household Refuse, Discarded Furniture, Mattresses, Scrap Metal and Iron, Appliances*
- **Please Do Not Bring :** 55- Gallon Drums, Liquids of any Kind, Batteries, Tires, Fencing, Large Car Parts, Building Materials.
- Recyclables can be prepared in Mister Rubbish recycle bags and dropped at the recycle bins.
- Drivers License or Property Tax Statements will be required for proof of township residency.

* All refrigerators, freezers, air conditioners or any other appliance with refrigerants must be tagged by a qualified technician who has removed the freon or they will not be accepted.

20500 KIRK RD
Country Living at its finest, in this 3 bedroom brick ranch. Features 2,150 sq. ft. of luxury living area, plus a huge sun room, 2 1/2 baths, fireplace, paved drive and a 24 X 30 barn all situated on 3 beautiful secluded acres.

Call Jim Mann at
MANN REAL ESTATE
428 - 8388

Oil Change Special
\$15 Everyday Low Price
(up to 5 qts. of oil, foreign cars excluded)

Full Recycle Machines for air conditioners and anti-freeze
We Turn Rotors & Drums

Brakes	Tires
Exhaust	Tie Rod Ends
Shocks & Struts	CV Shafts
Tune Ups	Batteries
Front End Alignments	Transmissions
Radiators	

Mon - Fri 7 am - 7 pm Sat 8 am - 5 pm Closed Sundays

"THE ONLY FULL SERVICE GAS STATION IN TOWN"
BENEDICT'S SERVICE
24 Hour Wrecker Service
327 W. main St. 428 - 8576

ORTHODONTIST
RAYMOND P. HOWE
D.D.S., M.S.

515 S. Main Street
Chelsea

Telephone
(313) 475-2260

CHELSEA FARMERS MARKET
SATURDAYS
8 am - 1 pm
May thru October

Fresh Seasonal Produce • Bedding Plants
Fine Woodworking • Eggs
Arts & Crafts

New Vendors
Welcome

DOWNTOWN CHELSEA

People

Manchester Chapter of Christmas in April *Washtenaw wishes to thank the following contributors and volunteers for making the Third Annual CHRISTMAS IN APRIL an enormous success

- | | | | |
|---------------------------|-----------------------|--------------------------|-----------------------------|
| Adrienne Wallace | Dianne Schwab | John Curley | Pam Green |
| Aimee Brennan | Dick Stein | Jon Okey | Pat DuRussell |
| Andrew Schook | Doug Welsham | Joseph Ferris, Jr. | Patti Keezer |
| Angie Keezer | Doug Parr | Judy Elwartowski | Paul Bancroft |
| Angie Goodrich | Eileen Ball | Justin Klaven | Pete Dunny |
| Ann Pat Wolf | Elizabeth Bragg | Karen Hinkley | Plumbers & Pipefitters |
| Back Door Store Party | Eric Anderson | Karin Messing | Local #190 |
| Baker's Dozen | Erin Binder | Keith Harper | Pork Avenue Excavating |
| Ben Okey | First of America Bank | Kim Rickett | R. D. Kleinschmidt, Inc. |
| Ben Creason | G. E. Wacker, Inc. | Rachel Bross | Knights of Columbus |
| Ben Lowery | Hannah Goodrich | Raymond Goff | Larry Benedict |
| Bill Mussio | J.M. Wash on Wheels | Richard Tucker | Laura Sutton |
| Bill Weber | Janet Broucek | Rick Stein | Janet Messing |
| Bill Walkowe | Janice Little | Ruth Ahrens | M. Ava Goff |
| Bill Schwab | Jeff Proctor | Sallie Anderson | Ray Goff |
| Bridgewater Lumber Co. | Jeff Schaffer | Sandi Fielder | Maggie Gisting |
| Carol Poore | Jennifer Pfaus | Mark Schulte | Manchester Area Girl Scouts |
| Carol Kahn | Jennifer Noggle | Sharon Goodell | Manchester Men's Club |
| Carole Schulte | Jennifer Nobschich | Sonya Knull | Manchester Kiwanis |
| Carrie Keezer | Jerry Ahrens | St. John Lutheran Church | Manchester United Methodist |
| Charlotte Majors | Jessica Noggle | Stein Electric | Mark Schulte |
| Cheryl Waldenmeyer | Jill Ferris | Ted Mester | Martha Mackres |
| Church Youth Group | Jill Pfaus | Tom Lavender | Marti Bietner |
| Colleen Kemner | Jim Jenter | United Church of Christ | Martin Way |
| Community Resource Center | Jim Roberts | Village of Manchester | Matthew Ross |
| Craig Schaub | Jim Schook | Walco Foods | Mel Scroufe |
| Dana Noggle | Jim Mann | William Pfaus | Melanie Kapa |
| Darby Ready Mix | Joan Fredal | | Millard Uphaus |
| David Little | John Ninier | | Monty Okey |
| David Noggle | John Anderson | | Manchester Electric |
| Dennis Kittel | John Hinkley | | National Honor Society |

If we have inadvertently left anyone's name off this list, please contact the Community Resource Center at 428-7722 and we will make a correction. Thank you all for your valuable contributions.

WMU STUDENT EARNS BUSINESS SCHOLARSHIP

Jennifer L. Binder was among the students recently awarded scholarships by the Haworth College of Business at Western Michigan University. The scholarships have been awarded for the 1994-95 academic year and range from \$100 to \$1,000. The students were recognized for their academic excellence and extracurricular participation in the college's activities.

Jennifer L. Binder, received the C. William Hurley Scholarship, a \$500 award based on academic performance and financial need provided by Hurley, a WMU alumnus and a Kalamazoo insurance appraiser. A junior majoring in accountancy, she is the daughter of Lynn Keil and John Binder, both of Manchester.

United States National Award Winner

The United States Achievement Academy announced that Kaitlyn M. Marvin has been named a United States National Award winner in English. This award is a prestigious honor very few students can ever hope to attain. In fact, the Academy recognizes less than 10% of all American high school students.

Kaitlyn, who attends Lenawee Christian High School was nominated for this national award by her English teachers, Teresa Mattson and Ruth Mowrer at the school. Kaitlyn's name, biography, and award will appear in the United States Achievement Academy Official Yearbook, published nationally.

Kaitlyn is the daughter of Greg and Kathleen Marvin. The grandparents are Fay Marvin of Annandale, Virginia and Jackie Mitchell of Toledo, Ohio.

new arrivals

Eric Thomas Lobbestael

Bruce and Lori Lobbestael, of Saline, announce the birth of their son, Eric Thomas, on May 2, 1994. Eric weighed in at 9 pounds, one ounce.

Eric has a big sister, Emily Jean, twenty months old, who happily conveyed the news to her grandparents, Gene & Sandy DeRosset and John & Lynda Lobbestael, all of Manchester.

EMU HONORS STUDENTS

Eastern Michigan University's College of Health and Human Services recently honored five of its most outstanding students at its annual Honors Reception.

Outstanding 1993-94 Student Awards went to Kathleen Siler of Manchester; Janice Roehm Luther of Tecumseh; April Ritner of Ann Arbor; Jennifer Abela of Dearborn; and Debra Paul Doltavio of Canton.

Siler is a graduate assistant in the Occupational Therapy Program and was chosen for the award because "she exemplifies many of the characteristics of an ideal student." She acts as student representative on the Graduate Faculty Council and Academic Dismissals and Appeals Committee, serves as adviser for external occupational therapy intent students, has taught and assisted with undergraduate classes, and has become an "unofficial resource" for undergraduate students interested in occupational therapy. She also has made clinical presentations in gerontology at the Michigan Occupational Therapy Association and the Gerontology Spring Lecture Series.

THE EXCHANGE PLACE
It has been brought to our attention here at the Enterprise that there needs to be a clearing house for work. (i.e. lawn mowing, babysitting, window washing, etc.)

Attention Kids! Elders too! Starting MAY 1, 1994, there will be a new place to advertise your willingness to work, or your need to have someone do it for you.

As a service to the community, The Enterprise office will have a bulletin board called THE EXCHANGE PLACE. You may post your name & phone number, type of work wanted or needed. Send or bring in a 3 X 5 card with your name, number, experience and if you have references. Only our kids, yours and mine, or our mature friends looking for work, no business.



As A Group, Mature Drivers Are A+ With Us.

Each year of maturity seems to present new challenges. But, when your car is insured with the new Auto-Owners A+ program, saving money isn't one of them. If you are a member of a company approved retirement association or group, you may be eligible to receive a substantial group discount on your automobile insurance. Contact us now for more information.

Auto-Owners Insurance
Life Home Car Business
The No Problem People

SUTTON AGENCY
Connie Widmayer, Agent
136 E. Main 428-9737



PREMIER CONTRACTING INC.

Full Service Residential Building & Remodeling
"Let us help you with your building plans"



Lots Currently Available

Ron Milkeg
(313) 428-9826



8409 Boettner Road
Bridgewater, MI 48115

944-0332

Now Open

Complete Auto Detailing & More

- ▲ Waxing & Polishing
- ▲ Interior Cleaning
- ▲ Sunroof Sales, Starting at Just \$159⁹⁵ and Up Installation & Repair
- ▲ Splash Guards
- ▲ Truck Accessories
Running Boards, Sun Visors, Tonne Covers, Headlight Covers, Taillight Covers, Bug Shields, Push Bars
- ▲ Pick Up & Delivery Available

FUND RAISING

Manchester Sportsman Club
8501 Grossman Rd.
Friday 6:45 p.m.

Manchester American Legion
203 South Adrian
Saturday, 7:00 p.m.

MICHIGAN'S SUMMER JOB OUTLOOK FOR TEENS LOOKS BRIGHT

Michigan's improving employment opportunities for young people this summer.

"We are forecasting an increase of nearly 30,000 jobs for teenagers in the state this summer," F. Robert Edwards, director of the Michigan Employment Security Commission (MESC), said.

The MESC is predicting that youth employment will climb to about 336,000 this summer compared to 307,000 last year. The jobless rate for young people should drop to 17.4% from 18% in the summer of 1993 and its lowest level in five years.

"Because of the economy's continued improvement, we expect more youth will enter the summer job market in 1994 than last year," Edwards said.

Among all teens in the state, 74.3 percent will be either working or looking for work this summer, compared to 71.3 percent in 1993. The youth work force is

expected to reach 402,000, up 55,000 from a year ago. Edwards noted that some of the labor force increase may be due to a better count of young workers by the recently revised Current Population Survey.

"The strength of Michigan's economy helps account for our positive summer job outlook and the expected growth in the youth work force," Edwards said. "The state's tourism industry offers many employment opportunities for our young people, and this year forecasters expect the industry will show a 5.0 to 6.0 percent gain in travel volume and spending over last summer."

He suggested that teenagers interested in a summer job should begin their search as soon as possible and listed several industries that may offer opportunities. The industries included: agriculture, landscape and horticultural services, retail stores, grocery stores, recreational vehicle dealers, restaurants, hotels and motels, camps,

entertainment services, museums, galleries and zoos.

In getting started, Edwards recommended that young people obtain a Social Security number, if they don't have one yet. Those 17 or younger may need work permits, obtainable through local school district offices.

In their job search, young people should have a written employment reminder card or resume, which lists the names and addresses of former employers. The information will be useful in completing job applications.

"Teens should also 'network,' which means letting friends, relatives, neighbors and teachers know that they want summer employment," Edwards said. "They should check with all available sources for job leads."

Such sources would include MESC's Job Service, school placement offices, temporary help agencies, "help wanted" signs at local businesses and want ads.

"Young people need a positive attitude throughout their job search," Edwards said. "The successful jobseeker convinces the employer that they are sincerely interested in the job, and they can learn the job duties quickly and accurately."

Now Open at Michigan Livestock Exchange

Kim's Kountry Kitchen




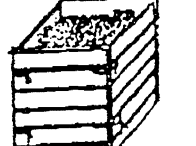
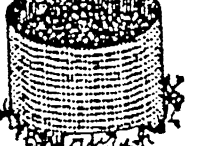
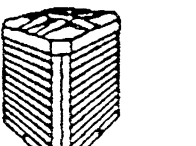


Open for Breakfast
6 am - 2 pm
7 days a week

Daily Breakfast & Lunch Specials

Homemade Soups, Breads & Desserts

Compost Pile Size & Location

A good size for a backyard compost pile is three to four feet high by four feet wide and as long as possible. This size is large enough to hold heat and still small enough for good air flow. Locate your pile close to your garden and a water source, and away from wooden structures and your neighbors. Yard wastes can be simply layered into a heap in an inconspicuous area on your lot. A tidier method uses simple structures that confine the pile. The Compost Education Center has many types of bins on display that are home-built or commercially purchased.

- | | | |
|--|---|--|
|  |  |  |
| An open pile blends into the landscape of a garden or semi-wooded site. | Four wooden pallets may be tied together to build a free recycled unit. | Twelve feet or more of chicken wire or snow fencing can be tied into a corral. Optional hooks or clips make it easy to open. |
|  |  |  |
| Plastic structures do not decompose. Note that several commercial bins are smaller than recommended (less than 3'x3'4"). | Multiple units separate fresh yard wastes in one bin from actively-composting materials in another. A third unit holds mature compost until used. | Enclosed units prevent access by small animals and hold in odors. They are designed to compost food wastes underground. |

1. Layer one part green materials with two parts brown materials:

- | | |
|--|--|
| Green Materials with High Nitrogen Content Include:
Grass, Weeds and Non-Woody Garden Prunings
Spent Flowers, Bouquets
Farm Animal Manures (cow, horse, chicken, sheep)
Fruit & Vegetable Garden Scraps
A Sprinkling of Blood Meal or Cottonseed Meal
Use one part green or one-third of the compost pile | Brown Materials with High Carbon Content Include:
Dry Leaves
Dead Brown Plants or Potted Plants
Straw, Sawdust
Pine Needles
Finely-Chopped Woody Brush, Corncocks
Use two parts brown or two-thirds of the compost pile |
|--|--|

2. Sprinkle a half-inch of soil or mature compost every few layers to provide the microorganisms necessary for the decomposition process.
3. Add water to keep the pile as damp as a wrung-out sponge.
4. Mix or turn periodically with a garden fork. Microorganisms need oxygen and small particle size. The more often you turn the pile, the quicker it breaks down.

Notes: Do not add meat, dairy products, diseased plant material, dog or cat wastes to a backyard compost pile. A compost pile made with predominately green materials (i.e., grass) may become soggy and release unpleasant odors. If this happens, break the heap apart and rebuild it, adding layers of brown materials and turn more often to dry out the pile.

One part green and two parts brown, Makes the compost turn to ground. Add some water and some soil. Turning is the only toil.

7-Year CD

7.00%
APY

3-Year CD

5.30%
APY

30-Month CD

5.20%
APY

We kid you not.

To get this great return, deposit at least \$500 in one of these CD's. You'll also get FDIC-insured stability that other investments can't offer. Really.

The APY's (Annual Percentage Yields) are effective as of May 16, 1994, are subject to change at any time without notice. Fees could reduce earnings on these accounts. These APY's are not available on Jumbo Accounts and cannot be combined with any other offers. Interest compounded quarterly. Penalty will be imposed for early withdrawal.

Manchester 428-8379
Ann Arbor 769-8300

Member FDIC



Club News

Miss Poppy 1994



Lesley Anita Jacob has been selected by The American Legion Auxiliary, Unit 117, to be Miss Poppy for 1994. Lesley is a fourth grader at Klager School, and the daughter of Lyle and Linda Jacob of Grass Lake. Lesley is a member of the Junior Girl Scout troop 966 and the Zion Lutheran Church.

Junior Youth Group. Her interests are camping, piano, and riding bikes. Lesley is the great-great-grand niece of Emil Jacob, for whom the Manchester American Legion Post is named. Lesley is a member of the American Legion Junior Auxiliary Unit #117.



Edna Knauss, member of American Legion Auxiliary Unit #117, selling poppies on Friday, May 13.



Kids with Asthma Can be Happy Campers!



Kids at Camp Sun Deer are happy campers. Even with severe asthma, they are taking part in all the outdoor activities that normally come with camp. Children with asthma, ages 9-12, enjoy their camping experience without worrying about their health because specially trained volunteers are on hand. Registration deadline for this year's camp (June 19-25) is May 2. To register a child or to volunteer, contact:

AMERICAN LUNG ASSOCIATION of Michigan 18860 W. Ten Mile Road Southfield, MI 48075 (810) 559-5100

Space contributed by the publisher as a public service.



The Girl Scouts of Troop #728 raised close to \$800 towards their trip to Sea World and the "Rainforest" at the Cleveland Zoo. Despite a cold and damp day, Chi-Bro Park was bustling with Scouts and buyers alike. Congratulations, girls!

FACT SHEET EMERGENCY MEDICAL SERVICES: THE STARS OF LIFE

National Emergency Medical Services Week Campaign: May 15-21, 1994

WHAT IS EMS WEEK?

National Emergency Medical Services (EMS) Week is designated by Congress and proclaimed by the President to encourage awareness and understanding of our nation's emergency medical services system. President Ford signed the first EMS Week proclamation twenty years ago in 1973.

The national observance of EMS Week is coordinated annually by the American College of Emergency Physicians (ACEP) and a coalition of national EMS organizations and agencies to:

- Educate the public about the EMS system and its appropriate use.
Help Americans recognize and respond to medical emergencies.
Encourage prevention of illness and injury.
Show appreciation for the contributions of every member of the EMS team.

EMS: THE STARS OF LIFE

The Star of Life is the universally recognized symbol of emergency medical services, and can be seen displayed on ambulances and other EMS equipment. Each of the six "points" of the star represents a different aspect of the EMS system, such as response or care in transit.

system made up of many critical components. The heroic efforts of the skilled and dedicated men and women who give the EMS symbol its true meaning by providing lifesaving care whenever and wherever it's needed.

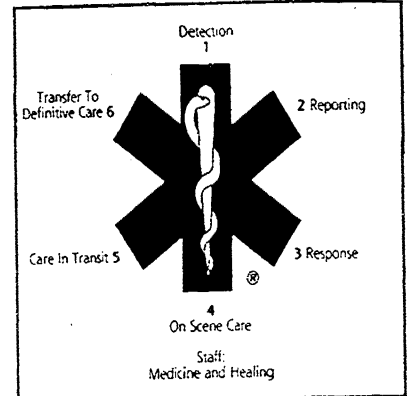
THE PUBLIC'S ROLE IN EMS

Members of the public are often the first at the scene of a medical emergency, and must be able to recognize emergency, call for help, and provide first aid. As active participants in the system, the public's role is represented by two of the "points" of the Star of Life - detection and reporting.

In spite of this important role, a national survey commissioned by ACEP and the Upjohn Company found that almost half of Americans cannot correctly identify 1-1 as a police, fire, or medical emergency number. Also, fewer than one-third of the respondents considered their households "very well-prepared" for a medical emergency.

EMS WEEK ACTIVITIES

During National EMS Week, more than 30,000 hospitals and EMS agencies nationwide will conduct grassroots education programs and activities with the theme, EMS: The Stars of Life. For information on EMS Week activities in your area, contact your state EMS office or your local EMS agency or hospital emergency department. For information on national EMS Week activities, contact the ACEP-Public Relations Department at (202)728-0610.



STATISTICS

Table with 2 columns: Category and Value. Includes statistics on emergency medical services providers, emergency physicians, emergency medical technicians, and various medical incidents.



A Wedding to Remember

by Carlson Craft

We'll help you make your wedding as special as you want it to be. Come in and see our elegant invitations and announcements, beautiful bridal books, napkins and other accessories to make your wedding day complete.

The Manchester Enterprise 109 E. Main St. Manchester, MI 48158 428-8173

Announcements

90-Ton Looney Tunes Sand Sculpture Kicks off World Cup at Briarwood

A 90-ton Looney Tunes sand sculpture will kick off World Cup USA at Briarwood Mall in Ann Arbor. The massive, three-dimensional sculpture of a Looney Tunes soccer match will be on display from Saturday, May 28, through Monday, August 15, in Briarwood's Grand Court. Made only of sand and water, it will take about 500 hours to create.

This is something that no one - from the tiniest toddler on up - will want to miss," says Briarwood marketing director Linda McIntosh. "Anyone who has tried to build a miniature sand castle on the beach can imagine what goes into sculpting 90 tons of sand."

"We thought this would be the perfect way to celebrate two major area events - America's first World Cup soccer games and Michigan's first Warner Bros. Studio Store, which just opened at Briarwood."

answer observers' questions as he works.

An architect by training, Vander Pluym travels around the world building giant sand castles for a living. The Briarwood sand sculpture recreates a soccer match filled with Looney Tunes characters. It includes fan-filled bleachers, goal area, vendor cart and part of the soccer field.

"It's a real challenge getting the figures exactly right," explains Vander Pluym. "If the eye ends up one inch lower, it just won't look like Bugs Bunny." Live Looney Tunes characters will visit the sand sculpture and pose for free pictures with young visitors.



Monday, May 30 is the Memorial Day Parade sponsored by the Manchester American Legion. The parade will start this year from the American Legion Tank Memorial, then move on to the Main Street Bridge, Wurster Park, and the Oak Grove Cemetery.

The parade will start at 1:00 p.m. at the Tank Memorial. Services at Oak Grove will be conducted by Lt. Col. Stanley C. McKenzie. A dinner will follow at the American Legion Hall for all veterans and families after the Parade. Please bring a dish to pass and your own table service. Meats will be furnished by the Legion Auxiliary.

There will be a Memorial Day Service at the Norvell Cemetery starting at 10:00 am on Monday, May 30th.

Sula Darlene Jeffers ATTORNEY AT LAW 146 E. MAIN STREET P.O. BOX 625 MANCHESTER, MICHIGAN 48158 (313) 428-8190

Kirk Excavating Sand - Gravel - Fill Dirt Basements - Driveways Licensed & Insured 428-7938 Dave Kirk 14180 Schleweis Road Manchester

KEITH'S BARBER SHOP 428-8584 Now Open Tuesday & Wednesday nights 'til 7:00 pm

McLennan Landscape A personalized professional service Design Consultation Plant Installation Retaining Walls Wild Flowers Finish Grading Shade Gardening Hydro Seeding Brick Pathways (313) 428-7005

Schebor's Greenhouse 14345 LOGAN ROAD MANCHESTER 428-8078 Bedding Plants * Flowers Perennials * Vegetables Geraniums * Hanging Baskets Potted Plants Mon - Thurs 10-6 Fri - Sun 10-5

Chelsea Community Hospital & Michigan Head • Pain & Neurological Institute present an Educational Symposium UPDATE ON SLEEP DISORDERS Dr. James R. Weintraub Director of the Sleep Program at Michigan Head • Pain & Neurological Institute in Ann Arbor Sleep Disorders Specialist at Chelsea Community Hospital Dr. Donald G. Dimcheff Director of the Sleep Disorders Center at Chelsea Community Hospital Pulmonary Disease & Critical Care Specialist Topics: Evaluation & Treatment Sleep Apnea What You Can Do For Insomnia Myths about Sleeping Pills New Research Findings Monday, May 23, 1994 7:00 - 9:00 p.m. Holiday Inn West - Ann Arbor (I 94 - Exit 172) CALL (800) 612-5733 To Register or for Additional Information Free admission due to an educational grant from Searle Pharmaceuticals

SILVERS SUBS PIZZA SALADS 138 E. Main St Manchester 428-6543 FAST FREE FRIENDLY DELIVERY in the whole 48158 area THANKS MANCHESTER!! for the overwhelming welcome you have given to Sir Oliver's Pizza. I also appreciate your expressions of concern during my recent illness and hospitalization. I am recovering at home and will soon be well. Sincerely, Chris Moyle Hours Sunday 1 a.m. - 11 p.m. Monday - Thursday 11 a.m. - 11 p.m. Friday & Saturday 11 a.m. - 1 a.m.

CLASSIFIEDS

SERVICES

Michigan Peat Sales: Black dirt for sale \$15 a yard delivered. Fast delivery. 428-9664 tfn

Lost or Found a Pet? Call the Huron Valley Humane Society. 662-5585. tfn

Fielder Painting: Interior and exterior. Free estimates. Senior citizen discount. Phone 428-8506 tfn

Black Dirt For Sale: By the pickup load or delivered. Dozer and backhoe work also available. 428-9265. tfn

Benedict Painting: Call Chuck for free estimates. 15 years experience — interior & exterior painting. 517-536-4812. 12/94/pd

Excavating: Sand, gravel, backhoe and bulldozing. Reasonable rates. 428-9265 tfn

Little Wack Excavating: Basements. Drainfields. Bulldozing. Black Dirt. Topsoil. Sand. Gravel. Ponds. Snow Removal. Salting. Paul W. Wackenhut 313-475-8526. 6/94/pd

Maintenance Unlimited: Seamless Gutters, roofing, siding, interior and exterior remodeling. FREE ESTIMATES 517-263-7371 3/3-4/21p, tfn

Farmers' Sand and Gravel. We deliver and spread driveways. 475-8850 tfn

Alber Excavating Basements, drainfields, driveways, top soil, black dirt, gravel, sand & snow removal. Steve Alber 517-536-8257 or 428-8636. 6/94p

Piano Tuning and Repairs: Qualified Technician since 1977. Ronald Harris, 475 - 7134 12-16/6-30pd

Field and Lot Mowing. Reasonable rates. Phone 428-7822 5/19

FREE ESTIMATES. Window Washing and Cleaning Service. Great Lakes Janitorial 475-3709 5/19

Wallpaper hanging/stripping •Quality Wallpapers (now 30% off) •Coordinated fabrics & bedding •Decorating consults •Antiques, buying & selling •Furniture and accessory arranging "MY SISTER'S HOUSE", Juli Trolz 428-7117. tfn

Welding and Fabricating Services. Free Estimates. Pickup and Delivery available. Call evenings and weekends. 517-536-4703 5/5/12/19

Paint Crafter's Ltd. 313-429-3880 Drywall Plaster Repair •Power Washing •Woodstaining •Deck Refinishing •Minor Carpentry •Free Estimates •Licensed •Insured •Jeff Stone Owner 5/5-6/30

LAWN & GARDEN SUPPLIES

Spring Needs for Lawn & Garden: Fertilizer, seeds, sprays, fungicides. Atlas of Manchester, 18875 W. Austin Road, 428-7077.

HELP WANTED

Chelsea Big Boy- All positions available. Apply in person. 475-8603. 1610 S. Main, Chelsea. 5/13 tfn

7 Drivers needed up to \$10/hour @ Sir Olivers Pizza. Must be 18 & over with good driving record.

ADIA OPEN IN MANCHESTER

We have many clerical and light Industrial positions available in Saline, Dexter & Manchester. Call, today for an interview.

ADIA 428-2800

2 Part time people needed for Food Preparation, 11 AM to 4 PM daily Mon - Friday. Apply in person at Sir Olivers Pizza.

MANPOWER

More work than workers, that's our problem. Can you help? Call (313) 665-3757. The number for employment in Western Washtenaw County. 5/19-6/1

ASSEMBLY WORKERS

Ann Arbor Assembly Corp is currently looking for dependable quality - minded individuals to fill our assembly workers positions. Must be 18 years or older, High School Diploma or GED preferred. Starting pay \$6/ hour. If interested send Resume to Personnel Administrator, 800 E. Duncan, Manchester, MI. 48158 5/19/26

Help Wanted Part time in the City of Manchester \$8.00/hr. Must have reliable Auto. 994-1122 5/19

HELP WANTED: CAMPUS INN HOUSEKEEPER

Previous experience preferred but not necessary. Competitive wages and benefits offered. Apply in person or send resume to 615 E. Huron, Ann Arbor. 48104 5/19/26

Part time Secretary 15 hours per week, computer, word processing and typing skills required. Mail resume's to: Our Savior Lutheran Church, 1515 S. Main, Chelsea, MI. 48118 5/12/19

CHILD CARE

COME LEARN WITH US Montessori Pre School invites you to come and visit any weekday 8:30 - 11:00. Please bring your preschooler and have some fun. 1987 W. Michigan Ave. Clinton Mich. 1-517-456-7646 5/19-6/2

Summer Care 3 days a week in my home. One child 5-6 yrs old. 994-1122 5/19

EDUCATIONAL

TUTORING - Certified Teacher will tutor K-12 students in all subject areas. 428-8116 5/19/26

Needed Host Families for July or August for French Students. Students have insurance and spending money. If you can help, please call 517-764-4276 5/12

VEHICLES

1984 Oldsmobile Cutlass Cierra Brougham. Loaded, runs good, 91,000 miles. \$1200 428-0847 5/19

93 Taurus GL Wagon loaded, ABS & Warranty 26,000 miles. Must sell \$13,700 or Best offer. 517-423-9619 5/19

PLANTS FOR SALE

Impatiens, Begonias, petunias, marigolds, Dusty Miller, Alyssum, Ageratum, Pansies, Salvia and more. All annuals \$7.50 / Flat. Fernariums, Spikes, Vinca Vines, Ferns. Largest selection in Lenawee County. Buy direct from grower. Open 7 days a week 'til 8PM. Prielipp Farms Greenhouse, 7 Miles East of Tecumseh or 1 1/2 miles East of Britton on M-50 to Downing Hwy then South 1 1/2 miles to farm. 517-451-5595 4/28-5/26

FOR RENT

Beautiful Loft Apt. Downtown Manchester. 1 Bedroom \$520 / mo, 2 Bedroom \$565 / mo. Call 517-431-2008 5/19-6/23

1 Bedroom mobile home \$273 per month plus utilities. Security deposit. No pets. Pleasant Lake Park 313-428-9251 or 313-561-0702 5/19

For Rent Furnished Efficiency 428-9202

Apartments For Rent. 2 - 2 Bedroom Apts. Norvel 1 Block from lake. Lower unit \$425 + Utilities and deposit. Upper unit large 2 bedroom with diningroom. \$450 plus utilities and deposit. No Pets, No Smokers. References, 517-423-4941 tfn

Large 1 Bedroom Apartment. With large walkin Closets. Newly decorated. Heat - Water - Sewer furnished. \$450/Month, plus security deposit. 313-428-7270 5/19

1 Bedroom Upstairs Apartment, \$280/Month- You pay utilities (313) 428-9150 tfn

MISC FOR SALE

Spring Special - Get a head start on spring! A truckload of four environmentally safe Black Peat Dumped in your garden will loosen up your soil and give you more production. Call 428 - 9664 - Michigan Peat Sales 3/31 - 5/26

McCulloch Saws- Earl Alber 313 - 428 - 8707 tfn

18 Ft. Deep V fiberglass 150 horse inboard V-6, Excellent condition, must see \$3,000 428-0740 5/19

Piano For Sale: Wanted, responsible party to take on small monthly payments on console piano. See locally. 800-635-7611 5/26

Asparagus - U Pick, For Sale Now. 20225 Boetger Road, Manchester, Mich. Picking for about 6 Weeks. No picking after 8:30 PM. Call 428-9486 or 428-7409 5/5/12/19

10 yr Registered Appolusa good disposition, trail safe, \$1,000 - 428-0740 5/19

"Beagle Pups" 11 wks old ready to start. \$25, 428-0740 5/19

14 ft. aluminum flag pole. ready for the flag. Price \$50. Call 428-7822 5/19

Books - Books - Books, Cookbooks, Hardcover and Church Cookbooks \$1.00, 100's of others 25¢ each. 503 Furnace . Everyday

Pork for your pig roast or your freezer. Call now 428 - 0092 6/30

Free Dog 8 months old. Black Lab & Cocker Mix. Neutered 428-0353

MISCELLANEOUS

BAHAMA CRUISE! 5 days/4nights, Underbooked! Must Sell! \$279/Couple. Limited Tickets. (407) 767-8100 ext 7423 Mon-Sat 9am - 10pm 6/2



GARAGE SALES

Annual Fredonia Yard Sale. May 21 - 9 - 4, Community flea market Pleasant Lake Road at Lima Center Rd.

Huge Garage Sale Sat 9am - 3pm, Sun 9 am - 1 pm. 416 W. Madison. Clothes, Waterbed, Dining Table & Chairs, Household items, jet boat, motorcycle.

4 FRIENDS dig deeper for treasures for you. If you liked the last sale you'll love this one! Sat, May 21st, 9 - ??, 10360 Moon Rd., Saline

Garage Sale Antiques, Chairs Tables, mirrors, tools, porch glider, glassware, dressers & Misc. May 21-22nd -23rd, 9-5, 14560 Buss Road. (off Austin between Manchester and Napoleon)

Yard/Porch Sale, 318 Ann Arbor Hill. Sat ONLY 9:00 - 2:00. Great for little girls. (no early sales)

Multi-Family Yard Sale - Fri. 10 - 6, Sat. 9 - 5. Baby items & clothes, T.V., bikes & toys, new sink & vanity, lots more. 10795 Pleasant Lake (West of Schneider)

3 Family, Garage Sale, May 21, 9-4. 5046 Happy Hollow Drive.

ANTIQUES

ANN ARBOR ANTIQUES MARKET - THE BRUSHER SHOW Sun, June 19, 6 am - 4 pm. 5055 Ann Arbor Saline Road. Exit 175 off I-94. Over 350 dealers in quality antiques and select collectibles. Admission \$4.00, 26th season. The original!! 3/17-11/6

Manchester Antique Mall: 35 Dealers. Open 7 days 10-5. 116 E. Main. 428-9357. tfn

Dearborn West Estate Liquidators Brooklyn, MI. Complete Auction Service, "Your Place or Ours", Call Don or Marilyn Koebbe. 517 - 592 - 3911 tfn

PLANTS FOR SALE

Ivy Geraniums, Impatien & non-stop Begonia Hanging Baskets all \$8.00 ea. New Guinea & Fuchsia Bkts, \$10 ea. Thousands to choose from. All Baskets 10 inch size and excellent quality.

Prielipp Farms Greenhouse. 7 miles East of Tecumseh or 1 1/2 miles East of Britton on M - 50 to Downing Hwy. then South 1 1/2 miles to farm. 517-451-559 4/28-5/26

REAL ESTATE

Manufactured Homes; In lovely new rural Manchester Manor Park: Champion 1993 - 28'X 64' 3-bedroom, 2 bath, jacuzzi, fireplace, energy efficient. Finished drywall, solid wood doors and cabinets. \$48,500. 428-9644 5/26

St. Mary's Chicken & Biscuit Luncheon. May 25th. Serving from 11:00 to 1:00

THANK YOU

Thank you to the volunteers from Christmas in April who came to my house. Sincerely, Thank You. Rose Albertson.

Thank You to our family and friends for all they did to make our 50th anniversary such a special day. So many cards, good wishes, surprises made it a great occasion. **George and Ruth Goodell**

LEGALS

STATE OF MICHIGAN PROBATE COURT COUNTY OF WASHTENAW. CLAIMS NOTICE, Independent Probate. File NO. 94-104,445-IE. Estate of GRETA GILMER, DECEASED, 373-32-5190

TO ALL INTERESTED PERSONS: Your interest in the estate may be barred or affected by the following: The decedent, whose last known address was 300 Wild Goose Lake, Gregory, MI 48137 died April 10, 1994. An instrument dated April 15, 1987 has been admitted as the will of the deceased. Creditors of the deceased are notified that all claims against the estate will be forever barred unless presented to the independent personal representative, LOUIS FARMER, 1255 Lathers, Ypsilanti, MI, 48197 or to both the independent personal representative and the Washtenaw County Probate Court, Ann Arbor, Michigan 48107, within 4 months of the date of publication of this notice. Notice is further given that the estate will be thereafter assigned and distributed to the persons entitled to it.

KEUSCH AND FLINTOFT, P. C. Attorneys for the Estate by John P. Keusch, P-15927, 119 S. Main Street, PO Box 187, Chelsea, MI 48118, 313/475-8671

STATE OF MICHIGAN, PROBATE COURT, COUNTY OF WASHTENAW. PUBLICATION NOTICE Decedent's Estate. FILE NO. 94 - 104,446 - SE. Estate of DONALD W. OTTO, DECEASED.

TO ALL INTERESTED PERSONS: Your interest in the estate may be barred or affected by this hearing. NOTICE: A hearing will be held on May 31, 1994 at 9:00 A.M. in the probate courtroom, Ann Arbor, Michigan before Judge JOHN N. KIRKENDALL, (P-16010) on the petition of MARY KOWALK requesting that she and John P. Keusch be appointed personal representative of the Estate of Donald W. Otto, who lived at 18442 N. Territorial Road, Chelsea, Michigan and who died May 3, 1994, and requesting also the will of the deceased dated April 6, 1988 be admitted to probate. Creditors of the deceased are notified that all claims against the estate will be forever barred unless presented to the (proposed) personal representative or to both the probate court and the (proposed) personal representative within 4 months of the date of publication of this notice. Notice is further given that the estate will then be assigned to entitled persons appearing of record.

KEUSCH AND FLINTOFT, P.C. Attorneys for the Estate, May 6, 1994, BY JOHN P. KEUSCH, 119 S. Main Street, PO Box 187, Chelsea MI 48118, 313/475-8671

MARY KOWALK, Petitioner, 54 North Axford, Lake Orion, MI 48362

PARK WIDE YARD SALE

Sat., May 21st 9 am - ??? Manchester Manor - possible 116 homes

The '94 Geo Prizm

WOW!

Just \$189 A Month.

Lease a Prizm FOR JUST **\$189/A Month** for 36 months*



1994 Prizm

Lease a Chevy Prizm for just \$189 a month for 36 months, with no down payment. That includes dual air bags, AM/FM stereo, air conditioning, rear defogger and more! See one of your Great 8 Chevy/Geo Dealers today!

* \$188.71 monthly payment based on \$13,030 MSRP with 36-month lease. Total payments equal \$6,793.56. \$388.71 due at lease signing (includes \$200 security deposit). License, tax, title fees, insurance and optional equipment extra. Option to purchase for \$7,739.82 at lease end. Mileage charge of .10 per mile over 45,000 miles. Lessee responsible for excess wear and tear. Must take retail delivery from dealer stock by 6/20/94. Subject to approval by GMAC. See dealer for details.



ANN ARBOR
Rampy Chevrolet
3515 Jackson Rd. / 663-3321

CHELSEA
Faist-Morrow Chevrolet
1500 S. Main St. / 475-8663

DEXTER
Frank Grohs Chevrolet
7120 Dexter-Ann Arbor Rd. / 426-4677

SALINE
Bill Crispin Chevrolet
7112 E. Michigan Ave. / 429-9481

BRIGHTON/HOWELL
Champion Chevrolet
5000 W. Grand River / 545-8800

CLINTON
Underwood Chevrolet
1070 W. Michigan Ave. / 456-4181

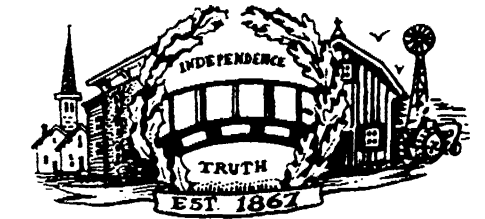
MANCHESTER
Tirb Chevrolet
131 Adrian St. / 428-8212

YPSILANTI
Jack Webb Chevrolet
1180 E. Michigan Ave. / 481-0210

SEE ONE OF YOUR GREAT 8 CHEVY/Geo DEALERS TODAY!

THE MANCHESTER ENTERPRISE

The Center of the Universe



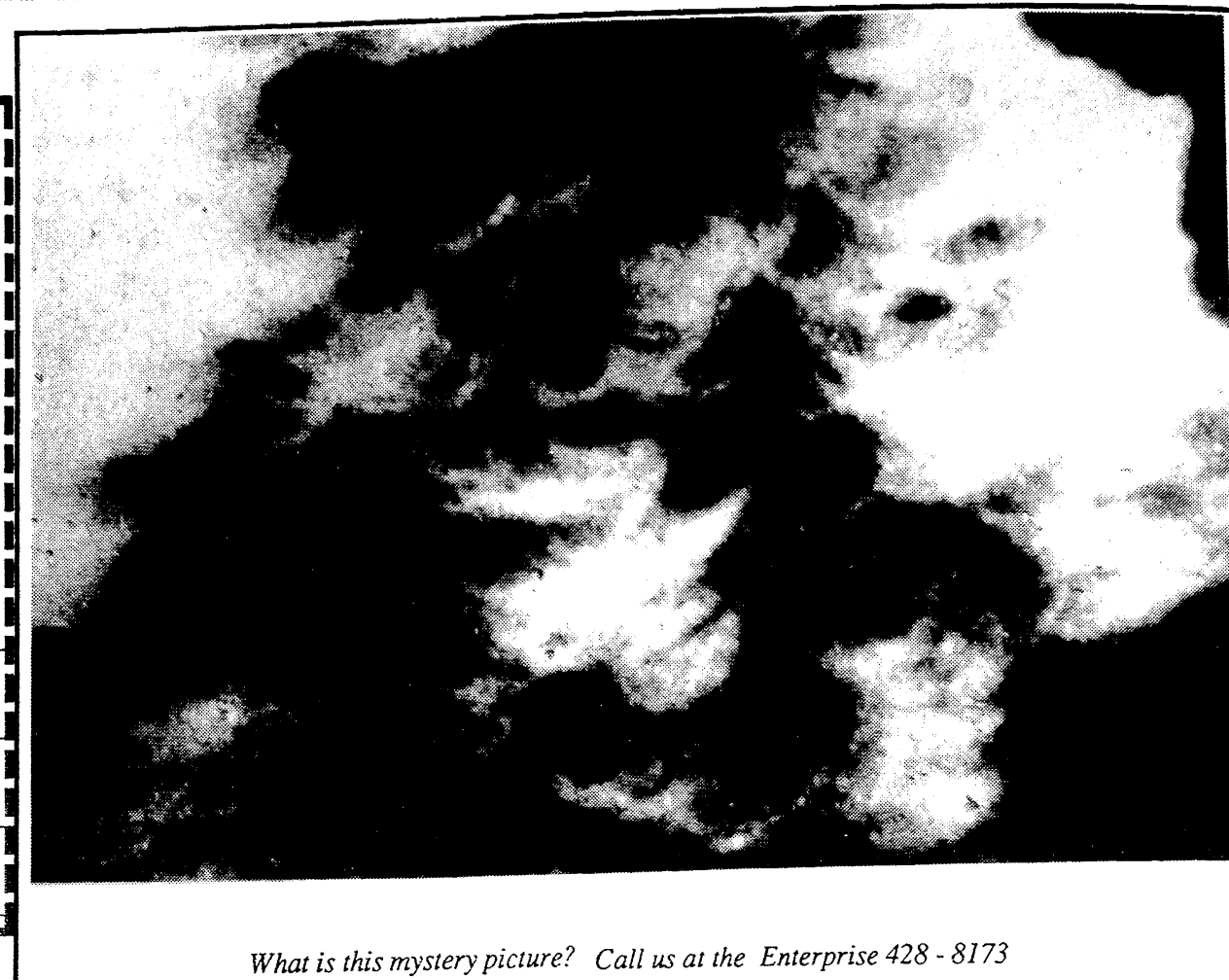
Price: 35¢ per copy



Subscribe to **The Manchester Enterprise** - the Center of the Universe - 109 E. Main St. Manchester, MI 48158 Phone: 313-428-8173

in Washtenaw County \$15 Out of County \$18

Name _____
Address _____
State _____ Zip _____
Phone _____



What is this mystery picture? Call us at the Enterprise 428-8173

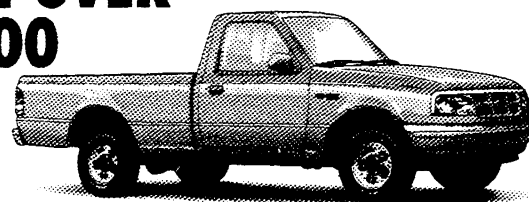
WHEN THE TENT GOES UP, THE PRICES COME DOWN.

Get A 2% Michigan Sales-Tax Rebate With Any New 1994 Escort or Ranger.

Now during your Greater Michigan Ford Dealer's 2nd Annual Tent Sale, you'll find great offers on the best-selling vehicles in America. Plus, we'll pay you the 2% Michigan sales-tax increase when you purchase a new 1994 Ranger or Escort right now. That means you could save over \$1,700 in

total savings on a special shipment of the '94 Escort LX Sport fully loaded with equipment and a sport-appearance package at no extra charge. And over \$2,000 on a loaded 1994 Ranger XLT. But stop by your Greater Michigan Ford Dealer today. Because come May 31st, this Tent Sale's dismantled.

SAVE OVER \$2,000



1994 RANGER XLT
Includes: • AM/FM Stereo/Cassette • Rear Anti-Lock Brakes • Sliding Rear Window • Chrome Rear Step Bumper • And More!

SAVE OVER \$1,700



1994 ESCORT LX SPORT
Includes: • Driver's-side Air Bag* • Air Conditioning • AM/FM Stereo/Cassette • Sport-Appearance Pkg. • And More!



HURRY! SALE ENDS MAY 31st.

*Available on retail deliveries of new 1993 or 1994 Escorts or Rangers from participating Greater Michigan Ford Dealers' stock from May 2-31, 1994. Excludes A, X, & Z plan purchases. Maximum of 2 vehicles per retail customer. All vehicles must be registered in Michigan on or before May 31, 1994 and Michigan 6% sales tax must be paid to be eligible. See dealer for details. **Based on '93 CY R.L. Polk registrations. ***Example based on '94 Escort LX Sport with manual transmission 321M PEP MSRP \$11,495, title/tax/license extra. \$1,724.90 total savings based on \$229.90 2% sales-tax savings, \$400 cash back on retail deliveries by 6/2/94, & \$1,095 option package savings vs. MSRP of options purchased separately. ****Example based on '94 Ranger XLT Regular Cab 4x2 with manual transmission PEP 864A & 2.3L engine MSRP \$11,310, title/tax/license extra. \$2,026.20 total savings based on \$226.20 2% sales-tax savings, \$300 cash back on retail deliveries by 6/2/94, \$500 2.3L bonus discount & \$1,000 option package savings vs. MSRP of options purchased separately. *Air bag to supplement safety belt.

MHS Announces Class of 1994 Top Students

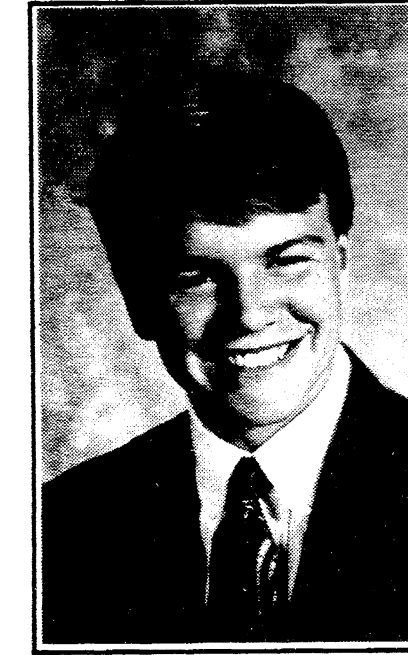


VALEDICTORIAN: KURTIS McDONALD

Kurtis McDonald earned his position as Manchester High School Valedictorian of the Class of 1994 by maintaining a perfect 4.0 GPA. He is a member of the National Honor Society and was elected treasurer in the 11th grade. His classmates also elected Kurtis their class treasurer over the past two years. Kurtis uses his exceptional skills in mathematics as a member of MHS math academic game team in the Cascades Conference. He is also a very active member of the Spanish Club. Last year, he traveled to Mexico in order to study the language more thoroughly. Kurtis has won several leadership awards, MEAP awards, perfect attendance and President's academic fitness award.

He has been a member of the MHS golf team in the 9th and 10th grades and a member of the basketball team for each of the last four years. In his spare time, Kurtis is a member of a local band, "Short Dead Dudes", who perform regularly in the Ann Arbor area.

He is considering several area universities, such as Michigan, Michigan State, Western Michigan and Northern Michigan.



SALUTATORIAN: BENJAMIN LOWERY

Ben's 3.979 GPA has earned him the title of Salutatorian of the Class of 1994. He is a member of the National Honor Society and recently was named a National Merit Finalist and winner of the Robert C. Byrd Honors Scholarship for 1994. This honor was given to only 200 Michigan high school students by the Michigan Association of Secondary School Principals and the Detroit Free Press.

Ben has been a member of the MHS Quiz Bowl team and the MHS Cascades Conference Academic Games math and English essay teams. He has won various leadership awards, MEAP awards and perfect attendance awards. He has been a member of the golf team for the past four years, and for the past two years he has been the captain of that team.

Ben is considering a major in some area of engineering and has shown an interest in attending the University of Michigan, Columbia or the Massachusetts Institute of Technology.

Irregularities Uncovered

-Emory W. Garlick

At Manchester Community Schools Board of Education meeting May 16, Treasurer Paul Kluwe outlined for Board members, problems with the "South & West Washtenaw Consortium".

The Consortium is made up of; Chelsea, Dexter, Manchester, Milan & Saline schools. A 15-year operating agreement is at a close and the consortium is proposing a five year extension. The proposed agreement was presented to the Board by David Mieras, Assistant Superintendent of the Consortium, at the April 18th meeting and was tabled until the May meeting when Mr. Kluwe and other members asked for additional information.

Mr. Kluwe's questions at the April meeting were:

1. "Is the consortium audited - does it have a formal audit?" Mieras' answer in April: "Yes, We'll get you a copy." Kluwe's finding: NO - the consortium does not conduct an audit.

2. "How many Manchester students are presently enrolled in consortium classes?" Mieras answer, "About 90". Kluwe's finding: There are about 51 students enrolled in consortium classes with an additional eight involved in co-op for a total of 59.

3. In a written request for information Kluwe asked, "General Administration Salaries are listed at \$158,334. Please give a detailed breakdown with the respect to the names, position, and amount

paid for this category. Also, please list the salary anticipated for these people for the current year." A response of three tables without elaboration was given. Kluwe's remarks: "I could only characterize this response as being obstructive to my request. What do you think?"

4. I [Kluwe] have for years been concerned by a lack of oversight of the consortium to protect the public interest. Under Act 267 of 1976, known as the Open Meetings Act, the consortium certainly qualifies as a public body. And the meetings of the "Board of Governors" are deliberative and decisions are made at these meetings. To my knowledge, these meetings of the "Board of Governors" have not been posted in advance and have not been open to the public. Kluwe believes The meetings of the "Board of Governors" must be brought into full compliance with PA 267 of 1976. [Editor's note: "The Board of Governors" Kluwe refers to consists of the Superintendents of the five school districts making up the consortium.]

Kluwe's Summary: There is great concern about the manner in which the consortium has been organized or administered. The above examples of the secretive manner in which the consortium is operated would tend to be characteristic of an entrenched bureaucracy seeking primarily to defend their turf. This consortium might be an administrator's dream district - one where there is no oversight by an elected body and where

the administrative deliberations and decisions are final and hidden from public view. This is not in keeping with our obligation to the public interest. For this and many other reasons, I cannot support a decision to continue our participation in this organization.

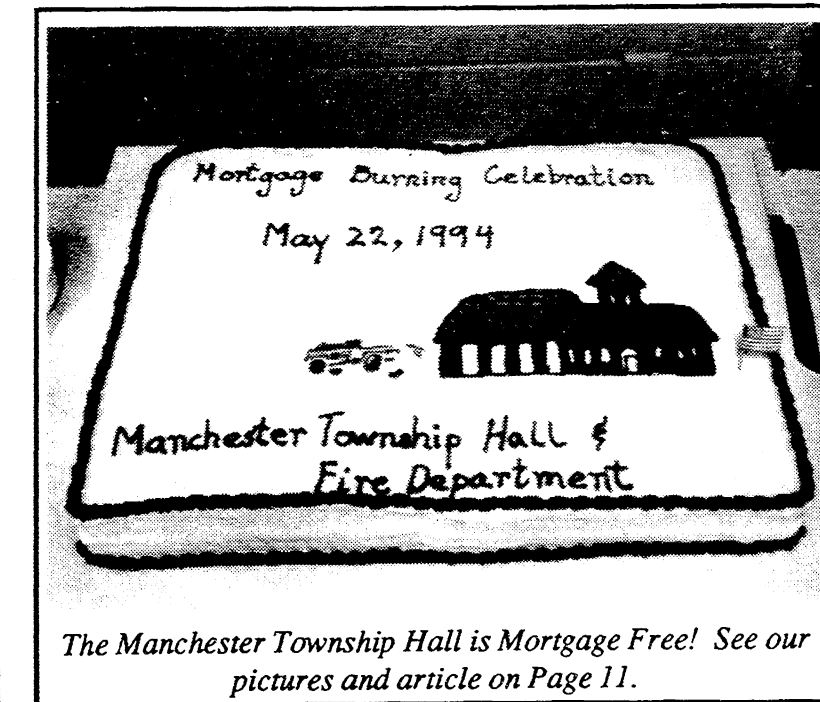
Manchester Board of Education, in a 4 to 3 vote at their May meeting, decided to continue as members of the consortium.

The Consortium's "intended" purpose is to operate programs and activities that "best educate students together in areas individual districts can not do as well alone". Manchester students are currently taking courses in Auto Service, Business Tech., Child Care, Computer Accounting, Cosmetology, Culinary Arts, Electronics, Health Occupations, Machine Shop, Marketing, Visual Imaging, Welding, Building Trades, and Manufacturing Technology. All Agricultural programs have been eliminated.

Currently Manchester bears about 13% of the consortium costs which amounts to about \$140,000 per year. In addition, Manchester furnishes the Pleasant Lake School to the consortium for a fee of only \$1 per year. The new proposed agreement is for five years and no member of the consortium could terminate unless a two year period of time had lapsed.

Next week we will present to the readers Mr. Kluwe's alternate solution entitled, "IF NOT THE CONSORTIUM ... THEN WHAT?"

Please deliver this copy to THE MANCHESTER ENTERPRISE
Manchester Township Library
P.O. Box 590
Manchester, MI 48153



The Manchester Township Hall is Mortgage Free! See our pictures and article on Page 11.