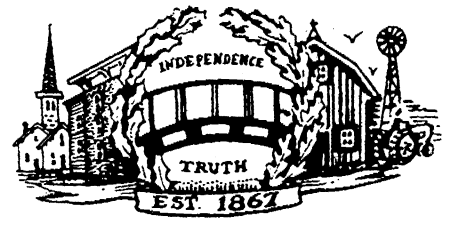


THE MANCHESTER ENTERPRISE

The Center of the Universe



126th Year -- No. 28

Manchester, Michigan

35¢ per copy

Jennifer Nosbisch Optimist Student of the Month

SPECIAL LAWN AND GARDEN ISSUE



Jenny receives her award from Russ LeBlanc. With her are parents Mary and Charles Nosbisch.

"Your Lawn And Garden Guide", inserted in this issue, is your guide to locating all your garden needs in and around the Manchester area.



The Manchester Optimists are proud to announce that Jennifer Nosbisch, an eleventh grader, has been named the April 1994 Optimist Student of the Month. Jenny is the daughter of Charles and Mary Nosbisch of Manchester. She is not a stranger to the Optimists; she has been successfully participating in their Oratorical contest for the past several years and was crowned the first place winner in 1994.

Jenny has maintained a perfect 4.0 Grade Point Average during her three years at Manchester High School. This outstanding academic record has earned her membership in the National Honor Society. Jenny has been a member of the MHS Cascades Conference Math Academic Team for the past two years. This year, the Team finished

second in a class battle with Jackson Lumen Christi High School.

Jenny is also very involved in other school activities. She has been a member of the cheerleader squad, a member of the volleyball team, a member of the softball team and a member of band for the past three years. She is also active in the drama club and the student council. Outside of school, Jenny participates in the St. Mary's Youth Group and is a member of the Blue Lake Fine Arts Board.

She plans to major in pre-med and is considering Hope College or Wittenburg University.

On Wednesday, April 27, the Community Resource Center sponsored their seventh annual Benefit Banquet at the Chelsea Community Hospital. The theme for this year's banquet was "SMILES".

The Banquet is held to honor local volunteers who offer their time and talents to the community. These volunteers bring "SMILES" to the faces of those to whom help is given; and they themselves "SMILE" from the joy of giving to others.

According to CRC Director, Dianne Schwab, the Manchester Recreation Task Force was recognized by the Community Resource Center as the organization giving outstanding service to the community in 1994. "Approximately eight individuals have been working together for six years addressing the recreational needs of the community," says Dianne. "The Manchester Community School students benefit from the opportunity to participate in roller skating parties (for 5th and 6th grades), monthly dances (for 7th and 8th graders), and in the high school, improvements to the volleyball courts.

Of course, the big job for the MRTF in the month of May is organizing and coordinating the details for the annual Canoe Race. (See details on page 16).

During June, July and August, a summer concert series at the Gazebo is organized, using the resources of people, time and money that such an organization can bring together.

Congratulations also to Sgt. Carl Werner, who received the Claire Reck award for outstanding individual volunteer service to the community. Carl was nominated by the MRTF, of which he has been a member for the past four years. He has also been president of the Kiwanis Club and currently serves as president of the Emanuel Church Council.

Profiles of all volunteers honored at the banquet will be published in the Manchester Enterprise over the coming weeks. Congratulations to all for bringing "SMILES" to the people of Manchester. -MJC

COMMUNITY RESOURCE CENTER Honors Outstanding Volunteers



Youth Volunteers Recognized: Mary Lobbetael, MHS Key Club; Adrienne Wallace, National Honor Society; Maggie Evilsizer, Students Against Driving Drunk; Melissa Driessche, MHS Leadership Class. More Next Week

Inside This Issue

Community Calendar.....	Page 2
Oliver's Pizza.....	Page 3
Editorial/Opinion.....	Page 4
Local Government.....	Page 5
Church News.....	Page 6
Announcements.....	Page 7
School Board Profiles.....	Page 8
Remember Mom!.....	Page 9
People & Occasions.....	Page 10
Senior Citizens.....	Page 11
School Pages & Sports.....	Page 12/13
Classifieds.....	Page 14

The MANCHESTER ENTERPRISE

Second Front Page: Sir Oliver's Pizza

You've Done it Again, Ollie!

by Marsha Johnson Chartrand

Well, it's happened. Sir Oliver's Pizza has finally opened up on Main Street. We've been watching the sign and their progress through the large front windows and waiting to see just what would happen with another pizza place in Manchester.

According to owner Chris Moyle, the response was "phenomenal". Of course, he acknowledges, much of that was plain old human curiosity, but Chris plans to keep on delivering (literally!) to his newly-found customers.

Yes, DELIVERING. That's the big difference in Oliver's right now. They will deliver to you if you are in the 48158 area. Chris says they are also planning to deliver to the Norvell area. Are you tired of running to town for a pizza? Is the baby asleep and you can't run out for pizza? Sick? Worn out from those spring lawn chores? Call Sir Oliver for fast, friendly and free delivery. Chris said he thought "it was time" for a pizza delivery business in Manchester. "Most of the other small towns around here already have it - Chelsea, Grass Lake, Brooklyn. I wanted to provide a service that they didn't already have here."

And yes, your pizza will be ready fast. Sir Oliver's is equipped with conveyor-type ovens which will bake a pizza in about six minutes. Chris has worked in the pizza business for

quite a while, owning Village Inn Pizza in Jackson, and managing the Domino's franchise in Chelsea. He understands the lessons he's learned in these businesses.

And, lest you moan, "More Pizza?", rest assured that there is more than pizza at Sir Oliver's. Currently they offer deli subs with homemade breads, and a variety of salads to tempt you. The "Ollie Bread" and "Cheese Sticks" are another taste treat - and possibly a meal in themselves! The "unofficial taste testers" at the Enterprise were overwhelmed by the quantities in the small salads; and learned that the Ollie Bread comes in a box which will also hold a small pizza. The voice of experience says, "one is plenty for a couple; two will probably feed your family!" But, don't worry - it won't go to waste. Someone will stop by and sample it, and you'll find it is soon gone, as we did. Owner Chris says they have plans to expand the menu as they work the bugs out,



but he doesn't want to disclose the particulars just yet. But it's a safe bet that this ambitious guy will come up with something Manchester will really enjoy. One plan he will talk about is that he has already, with the success of his sub business at lunch time, considered how he can redesign his front counter to accommodate custom-built subs. "Subs have always been a side-

were amazed by how busy they were at lunch time. Carry-out and delivery were equally busy. Chris currently lives in Chelsea with his family. They are looking for a home in Manchester, partly, he says, because "I've never lived much

more than a mile from where I worked. I like to walk to work, so in Chelsea I lived right behind Domino's." Being a part of the community will also be a plus for him. His three children, Kari (8), Christopher (6), and Kendra (3), "will readjust pretty easily", so we can probably look forward to welcoming the Moyles to town eventually.

Three year old Kendra is the family "superstar" this week - she was featured on America's Funniest Home Videos on Sunday evening. Even the Ann Arbor News gave her front-page coverage Sunday, and Chris said they had heard from a couple of newspapers and a radio station on Monday. What was Kendra doing? "Talking to a drain. She thought her mother was down there." OK! "Anyway, she got pretty good coverage and we were happy."

Chris promises to keep on "keeping his customers happy", and with the rousing welcome he's received so far, it's a challenge he's relishing.

Community Calendar

COMMUNITY EVENTS

Monday

1st Monday: Manchester Township Library Board meets 7:30 pm.
1st Monday: Manchester Masonic Lodge, business meeting 7:30

1st & 3rd Mondays: Manchester Village Council, 7:00
2nd Monday: Bridgewater Township Planning Commission meets 7:30

2nd Monday: Manchester Township Board meets 8:00

2nd & 4th Mondays: Manchester Optimist Club

3rd Monday: School Board meets MHS Library 7:45

Last Monday: Manchester Township Planning Commission

Tuesday

2nd Tuesday: Freedom Township board meets 8:00

2nd Tuesday: (after 1st Monday) Village Planning Commission

2nd Tuesday: Manchester Area Senior Citizens, 9:30 am

2nd Tuesday: 20th Century Club, 7:30 pm.

Thursday

2nd & 4th Tuesdays: Shakespeare Club, 2:00 & 4:00

3rd Tuesday: Bridgewater Township Board meets.

3rd Tuesday: Manchester Historical Society, 7:30 at Blacksmith Shop

4th Tuesday: Raisin Valley Land Trust, at the Blacksmith Shop

4th Tuesday: La Leche League 10:00 am call 428-8831.

Wednesday

1st Wednesday: Veterans of Foreign Wars, 7:30 pm

2nd Wednesday: American Legion Auxiliary, meets 7:30

2nd Wednesday: Manchester Recreation Task Force, 7:30 at Blacksmith Shop.

3rd Wednesday: Community Resource Center Board, 7:30

3rd Wednesday: WIC Program and Immunization Clinic, 9:30-3:00

Every Wednesday: Kiwanis, 6:30 at Haarer's

Wednesday, May 4: Salad Smorgasbord at Manchester United Methodist Church.

Friday

2nd Friday: Village Piece Makers meet at Emanuel Church, 7-10 pm. All are welcome.

Misc. Notices

Friday-Sunday, May 6-8: Open House Prielipps's Greenhouse.

Saturday, May 7: Emanuel Senior Youth Car Wash/Bake Sale/Rummage Sale, 9-3

Saturday, May 13: Country-Western Dance, American Legion

Sunday, May 15: Manchester Annual Canoe Race

The Community Calendar is a regular feature of the Enterprise. If your group would like their regular meetings printed here, please let us know at 428-8173.

Tri-County Sportsman's League

The Tri-County Sportsman's League, 8640 Moon Road, Saline, will hold a 3-D Shoot on Sunday, May 8. Registration is from 9:am-3:pm; and will be held rain or shine.

Adults will be charged \$7; Senior Citizens \$4, Youth/Juniors \$3, and Cubs are free.

For further information call (313) 429-9561.

LAST DAY TO REGISTER for School Election MONDAY, MAY 16 5:00 P.M.

School Election will be held on Monday, June 13

PARKINSON SUPPORT GROUP

The Washtenaw Parkinson Education and Support Group will meet Sunday, May 15, at 1:30 PM for refreshments and socializing to be followed by a program at 2:00 PM. "Dealing with Physical Changes Due to Parkinson's" will be the topic for small group discussion. The meeting will be in the McAuley Education Center, Building 5305. Everyone is welcome. For information call (313) 930-6335.

Alumni Association

The Officers and Trustees of the Manchester High School Alumni Association will meet on Monday, May 9 at 7:30 pm in the Blacksmith Shop. Plans will be finalized for the June 18th reunion.

Clark Lake Players

Auditions will be held May 15 & 16 from 7-10 pm at the Federer Rooms at Jackson Community College, for "Bye, Bye Birdie" and "Of Mice and Men", for the Summer Season.

American Legion Auxiliary



American Legion Auxiliary will meet Wednesday, May 11, at 6:30 PM in the Legion Hall. New Members will be initiated at this full potluck meeting.

Please bring a dish to pass and your own table service. Also, donations for Ronald McDonald House.

Business or Pleasure We have a Rental Plan to fit Your Needs

Taurus • Sedans • Vans • Trucks



New - Clean - Smoke Free

MIDWEST FORD

RENT-A-CAR 428 - 8343 RENT-A-TRUCK

THE EXCHANGE PLACE

It has been brought to our attention here at the Enterprise that there needs to be a clearing house for work. (i.e. lawn mowing, babysitting, window washing, etc.) Attention Kids! Elders too! Starting MAY 1, 1994, there will be a new place to advertise your willingness to work, or your need to have someone do it for you. As a service to the community, The Enterprise office will have a bulletin board called THE EXCHANGE PLACE. You may post your name & phone number, type of work wanted or needed. Send or bring in a 3x5 card with your name, number, experience and if you have references. Only our kids, yours and mine, or our more mature friends looking for an honest days pay can use this, sorry no businesses.

THE MANCHESTER ENTERPRISE

The Manchester Enterprise is published each Thursday at 109 East Main St., Manchester, MI 48158, with second class postage paid at the Manchester Post Office.

POSTMASTER: Send Form 3972 to: Manchester Enterprise, P.O. Box 37, Manchester, MI 48158.

The Manchester Enterprise, Inc. (313) 428 - 8173 Editor & Publisher Emory Garlick

Production & Writer Marsha Johnson Chartrand

One-year subscriptions are \$15 within Washtenaw County, \$18 outside the county. Deadline for display ads, photos, classifieds and news articles is Monday at 3:00 p.m. The Manchester Enterprise. No part of this publication may be used without the written permission of the publisher. © 1994 The Manchester Enterprise

COUNTRY WESTERN DANCE

Manchester Legion Hall Friday - May 13 8:30 - 12 Midnight



Music by Bruce & Sharon Hunt \$7.50 per Person Beer - Set ups - & Lunch Provided Call 428 - 8116 for reservations

Coming soon to a lawn near you!

SPRING APPLICATION TIME IS NOW! Crabgrass control • Grub control Lawn Fertilization and Weed Control • Dormant Oil & Deep Root Feeding

UNDERWOOD'S

Lawn Care • Tree Care • Landscaping • Nursery

Ask for Mark

1-800-841-8873



Faist-Morrow

the place to go for new or used vehicles

"Where the QUALITY Used Cars Are"

1500 S. Main St. Chelsea 475-8663

STEIN ELECTRIC COMPANY, INC.

Licensed & Insured Contractor

24 Hour Emergency Service

Motor Controls & Lighting

Ag. • Commercial • Industrial Institutional • Residential Backhoe & Trenching Services 50 ft. Bucket Truck

(313) 428-9050

Rick Graustein • Manchester, MI



A Good Selection of New and Used Cars On Our Lot

TIRB CHEVROLET & GEO Don't Get Disturbed..See Tirb! A Metro Detroit Chevy Dealer 313-428-8212 • Manchester

Scheduled Meetings

Bridgewater Twp. Doug Parr Supervisor 428 - 8243

Karen Weidmayer 13360 E. Austin 428-8641

Planning Commission 2nd Monday 7:30

Township meeting 3rd Tuesday 8:00

Freedom Township Town Hall 428-7545

11508 Pleasant Lk. Rd. Robert Little Supervisor Julie Schaible, Clerk 13785 Pleasant Lk. 428-7241

Township meeting 2nd Tuesday 8:00

Planning Commission meets on demand

Manchester Township Town Hall 428-7090

Ron Mann Supervisor 275 S. Macomb

Kathleen Hakes, Clerk Township meeting 2nd Monday 8:00

Planning Commission Last Monday

FIRE DEPARTMENT 428-9439 non-emergency calls

Sharon Township Supervisor John Savage 20453 Pleasant Lk. Rd. 428-8907

Duane Haselschwerdt 428-7733, 428-7591

8440 M-52. Township Meeting 1st Thursday 8:00

Planning Commission 2d or 3d Thursday

Manchester Board of Education Pat Sahakian, President Meetings 3d Monday 7:45

M.H.S. Library Superintendent - Ron Niedzwiecki 428-9711

Village of Manchester Larry Becktel President Jeff Wallace Manager 120 S. Clinton 428-7877

Village Council Meets 1st & 3d Monday 7:00



Dial a Garden 971-1129

Wednesday, May 4: Fertilizing Lawns

Thursday, May 5: Wild-flower Protection

Friday, May 6: Selecting Pesticides for the Home Orchard

Monday, May 9: Drip-Irrigation

Tuesday, May 10: Buying Transplants

Wednesday, May 11: Hardening Off Transplants



GRADUATES

When you need Announcements Name Cards Memory Books Jewelry Party Supplies See Us!

The Manchester Enterprise 109 E. Main St. 428-8173

Letters To the Editor


Dear Ms. Benedict,
 Thanks for letting our class come in and learn about your work. We were really interested in how you put papers together and print them.
 Thanks for your time.
 Sincerely,
 Andrew Hughes & the Walk and Write Class (Middle School)

Dear Editor:
 Very interesting article on School Board Candidates (April 14 issue). The article was very informative; however I still have a few questions.

Joe Turk stated he wanted to "continue to build the curriculum". This sounds good, but how do you build a better curriculum and keep laying off good teachers? Doesn't make sense, does it?

Mrs. Sahakian states, "continued efforts for excellence" - whose is she talking about, helping the kids or giving more big raises for our school administrators? What about this bit about being "accessible" and "hearing what is going on in the schools." When I went to one board meeting, she stated "The Board does not take action unless people come before the Board with the same problem for 4 or 5 years." Four or five years? You have to be kidding. You call that leadership? Wow.

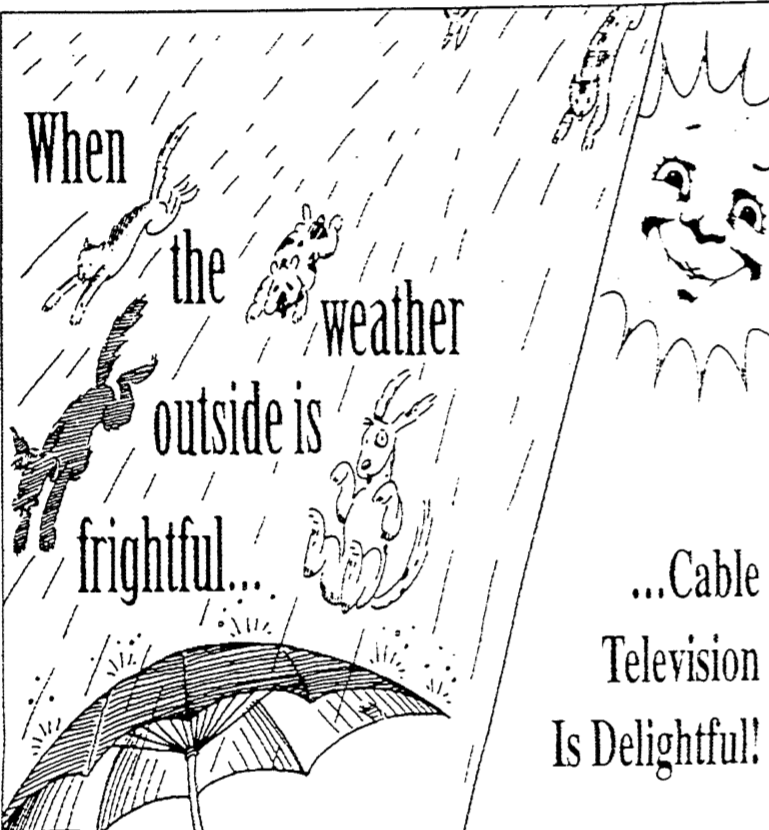
"The Manchester Detective"



Follow your dream, not the beaten path.

No matter where your vacation dreams take you, AAA Travel Agency can get you there. We're Michigan's largest full-service travel agency.

1200 S. Main St., Ann Arbor 930-2250



When the weather outside is frightful...
 ...Cable Television Is Delightful!

Deluxe Cable Installation Now Just \$7²⁵ Save up to \$28.59

Call: 429-4923 in Saline
1-800-684-4600 All other areas.
Offer expires May 31, 1994. Some restrictions may apply.



When luck runs out on your major appliances,

call us for expert repair service. With an expanded staff, we're ready to meet your needs with same-day or next-day service.

Call us at 428-8243



MANCHESTER ELECTRIC

200 Riverside Drive
 Manchester
 Our 18th Year

Manchester Dairy Queen

Treat MOM Royally

Fri, Sat & Sun May 6th, 7th & 8th



Hot Fudge Brownie Delight

\$1⁹² plus tax

Creamy smooth soft serve and moist chocolate fudge brownie come together for you at Dairy Queen in the Hot Fudge Brownie Delight treat. So hurry in on Friday May 6th thru Sunday May 8th and treat MOM and yourself to a Scrumptilicious Royal Treat.

Hot Eats Cool Treats

Dairy Queen

We Treat You Right[®]

Spring Hours
 Mon-Thurs 10:30-9:00 Fri-Sat 10:30-9:30 Sun. 12-9:30

PREMIER CONTRACTING INC.

Full Service Residential Building & Remodeling
"Let us help you with your building plans"



Lots Currently Available

Ron Milkey
 (313) 428-9826

LARGE AUCTION SALE

PARIS, MICHIGAN

SAT., MAY 7th - 10:30 am

Directions: 131 to 19 Mi. Rd. Exit; go West 10 miles to Big Jackson School (Oak Road) go South 1 1/3 mi. to farm. (Just N. of Big Rapids)

Changing farm operation: **Selling farm equipment - Dozers - Tractors - Parts - Tools - Building Materials - Antiques & Collectibles**

Case 990 D. Tractor; Case S.C. w/ cultivator & loader, good cond.; Allis Chalmers WC w./ forklift; Allis Chalmers 1956 WD. - 2 Case 400 diesel Tractors

B/A/C Oliver dozer (HG) w/ blade - WD/AC Oliver Dozer - Oliver OC6 dozer - All dozers run well w/PTOs & hydraulics

J.D. fertilizer spreader, sharp; Ac #1600; 8' chisel plow; gravity box; J.D. RWA 10 ft. disc; several drags; Towick corn dryer; J.D. MTD mower; bulldozer blade & frame; round blade spear; John Deere 112 tractor w/ deck, new motor; 1983 Mazda RX7, 5 speed, air, nice.

MF 410 D.S.P. combine w/ straw chopper, #44 corn head - 13 ft. grain head.

IH #550 FH chopper w/ 1 row cord head; AC #780 chopper; horn leader; N.H. 23 blower, like new; 2' forage wagons w/ gears; several flatbed wagons; hay rakes; J.D. #33, #35 spreaders; J.D. 44 ft. hay elevator.

Many pieces of farm equipment for parts: Trucks, balers, choppers, (Ford, IH, NH, AC) blowers, corn shredders, chopper wagons, corn planters, etc.; quantity of scrap metal.

Quantity of new parts for: Oliver, AC, B & WD, IH, dozers, tractors, etc.

Livestock equipment includes: Round bale feeders cow clippers, almost complete 2 in. pipeline milking system w/ 4 units, fence & fencing supplies, elec. fences, sales, pig feeder, drinkers.

COLLECTIBLES - ANTIQUES - HOUSEHOLD

Oliver walking plow; Oliver riding plow, sulky; quan. harness; stained glass window; Model A front axle & wheels; antq. car parts; bathtub on legs; old puzzles; games; models; etc. freezer; 30 in. elec. stove; ammo 32-40 shells (32 sp) duck -goose decoys; shotgun reloader; fishing gear; knickknacks; old tools; lanterns; bottles; gumball machine; license plates; kitchenware; old sewing machine; metal & wood boxes; pictures; kitchenware; old sewing machine; walnut cabinet; maple table & chairs; humpback chest; wood stoves; pocket watches; oak table; kitchen table; kitchen wood stove w/ oven; elec. train; mink stole; and much much more not even unpacked until sale!

BUILDING MATERIALS

Shingles; doors; new aluminum storm windows; alum. frame wind. & door wells; stainless 6 ft. sink; elec. boxes; lights & fixtures; shallow well pumps & tank and much more!

MISC. & TOOLS

Auger wagon; feeder wagon; hydraulic dump trailers; miter box - adj. power winch; PTO seeder; elec. motors; chain saw; drill press; buzz saw; fanning mill; ladders; 2 lawn trailers; grinder; belt & disc sander; Dunlap table saw; B&D overhead saw & stand; Craftsman overhead saw & stand; Honda moped; and much more!

NOTE: this is a very interesting auction. Dealers, collectors and bargain hunters will all have a good day. Joe has spent many years adding to his collection and hopes you all can partake in his treasures. Remember this listing is like an iceberg - you're only seeing the tip! Come and see for yourself on May 7th.

TERMS: Cash or good check; ID required: out-of-state buyers need bank letter or cashier's check. Nothing removed until settled for. Owners or auctioneers not responsible for accidents or items after sold.

Order of Sale: Selling w/ 2 rings most of day, Dozers & Tractors @ 1:00pm
 OWNER: JOSEPH HAYES
 9265 Oak Rd., Paris, Mi.
 (616) 796-7816 or (313) 663-9400

Sale Managers & Auctioneers:
PREMIERE ASSOC. INC. - Lowell, Mi.
 "Quality Farm Auctions"

Jim Cook Jr. Paul Warner Ron Lamoreaux
 (616) 897-8872 (517) 543-7647 (616) 691-7015

Local Government

Bridgewater Township Planning Commission April 11, 1994 Summary Minutes

Commission Chair James Fish called the meeting to order at 7:33 p.m. The Minutes of the March 14, 1994 meeting were approved as written.

The primary business of the meeting was a public hearing to consider amendments to the conditional use permit for the Battlegrounds, Inc. property at 13333 E. U.S. 12, Clinton MI.

Douglas Page, owner of Battleground, Inc., was present to discuss the proposed amendments to his conditional use permit. Mr. Page requested permission to: 1) Erect lighting for evening games, 2) Extend playing hours to 10:00 p.m. on weekends, 3) Have games on Tuesday or Thursday evenings until 10:00 p.m.

No one, to Mr. Page's knowledge, has attempted night games, and Mr. Page is not certain of their success. Consequently, he requested permission to erect lights and test evening games on the weekends and during the work week.

Chairman Fish stated that the Planning Commission would have difficulty approving amendments to the conditional use permit when Mr. Page was requesting such great flexibility to test various lighting configurations and business hours.

Mr. Page agreed to design and document a limited plan to test his proposals and present that plan to the Commission at the next regularly scheduled meeting on May 9, 1994.

Mr. & Mrs. Gerald Smith, 20620 Austin Road, Manchester Township, were present to discuss their plans for a mulch business on their property in Bridgewater Township. Mr. Smith stated that he was not planning to use the property for nursery stock this year, but he is interested in moving his mulch business to the property this year.

Mr. Smith was advised to contact the DNR regarding the placement of the mulch piles in relation to the wetlands on the property. Chairman Fish further advised Mr. Smith to finalize and document his plans for the mulch business, then to formally apply for a conditional use permit.

W. Peacock distributed draft copies of a lot split ordinance to the Lot Split Ordinance Committee.

Meeting adjourned at 9:33 p.m. Next Meeting is May 9 at 7:30 p.m.

Wade Peacock
 Secretary

PROPOSED SYNOPSIS of the regular meeting of the Manchester Township Board held April 11, 1994:

The meeting was called to order at 8:00 p.m. with all members present. Several visitors were also present.

The Board approved the minutes of their last meeting and accepted the minutes of the Planning Commission. Bills paid since the last meeting were reviewed. Treasurer Turk's report was accepted. Bills totaling \$11550.43 in the General Fund were approved for payment.

The Township will be holding a mortgage burning ceremony at the Township Hall and Fire Station on Sunday, May 22, 1994 at 2:00 p.m. There will be an open house following the ceremony.

A fireman presented several hand-outs and talked to the Board regarding some concerns on policies and procedures for the Fire Department. Authorization was given to sign the ambulance service agreement with Huron Valley Ambulance. Keith Johnson's resignation from the Fire Department was accepted with regret.

Mary Kallewaard and Olga Nickels, as Manchester Township's representatives, discussed a report from the District Library Study Committee. Representatives of the committee from Manchester, Sharon, and Bridgewater Townships unanimously recommended taking the next step toward becoming a district library. The Board took this opportunity to express their appreciation to Mary Kallewaard and Olga Nickels for their service on the committee on behalf of the township.

Constable/Zoning Administrator Lyle Moore is currently on medical leave and will return soon.

Lyle Widmayer and Bob Kellum were re-appointed to one and three year terms, respectively, on the planning commission and Don Limpert was newly appointed for a three year term.

Proposed road and fire equipment millages were discussed. Approval was given to contract with the Road Commission for repair work on Schleweis Road from Bowens Road to the Village limits.

A small fund was allocated for any cooperative residential road-side clean-up through the end of the fiscal year.

Amendments were made to the budget and authorization was given to purchase some office equipment, including a tax receipting system and upgrading of computers. Repair of windows in the hall and fire barn was authorized, as was repair of sections of the garage doors on the fire barn.

No item of correspondence required action from the Board, and there being no further business, the meeting adjourned at 11:45 p.m.

The next meeting of the Manchester Township Board will be Monday, May 9, 1994, at 8:00 p.m. at the township hall. Complete minutes of the April regular meeting are available for viewing at the Manchester Township Hall, 275 S. Macomb St. Office hours are Monday, Tuesday, Wednesday and Friday from 8:30 a.m. to noon.

Submitted by Kathleen M. Hakes, Clerk
 Approved by Ronald E. Mann, Supervisor

UNAPPROVED PROCEEDINGS MANCHESTER VILLAGE COUNCIL APRIL 18, 1994

The regular meeting of the Manchester Village Council was called to order by President Becktel at 7:00 p.m. Council members present: Becktel, Brooks, Conaway, Marshall, Schaffer, Taepke, Vought, Clerk Tucker and Manager Wallace. Also present: Susan Morey, Linda Mussio, Carl Werner, Jean Robert, Janet Shurtliff, Norm Lenhart, Helen Hosmer, Diane Slocum.

The minutes of the April 4, 1994 regular meeting were approved as presented on a motion by Marshall, support by Vought. Vote: Ayes-all.

The proceedings of the April 4, 1994 regular meeting were approved as presented on a motion by Marshall, support by Taepke. Vote: Ayes-all.

The Agenda was approved as amended on a motion by Vought, support by Conaway. Vote: Ayes-all.

Motion by Becktel, support by Marshall to adjourn as Council at 7:30 p.m. and open the public hearing. Vote: Ayes-all.

Motion by Becktel, support by Schaffer to convene as the Zoning Board of Appeals. Vote: Ayes-all.

PUBLIC HEARING - WALCO DIMENSIONAL VARIANCE REQUEST There was no public comment from those in attendance at this time. Public Hearing was closed at 7:35 p.m.

Motion by Schaffer, support by Marshall to adjourn for a 10 minute recess so that interested Council members could go down to Walco to measure for the property line and placement of the walnut tree. Vote: Ayes-all. Council was back in session at 8:20 p.m.

Motion by Marshall, support by Taepke to approve the variance request of Walco Foods contingent upon them creating a 10' x 160' transitional greenbelt with live vegetation, agreed upon by Becktel and the neighbors, with the vegetation being a minimum of 4' in height, and moving 16 parking spaces to the northeast side of the building, due to the practical difficulty if the variance is not granted. Vote: Ayes-all. Motion by Becktel, support by Schaffer to adjourn as ZBA and reconvene as Council at 8:30 p.m. Vote: Ayes-all.

SHERIFF REPORT - Motion by Brooks, support by Conaway to accept the Sheriff's Report of March, 1994. Vote: Ayes-all.

ORDINANCE COMMITTEE - Motion by Vought, support by Marshall to adopt the Ordinance #217 as presented. Vote: Ayes-all. This ordinance amends Chapter 51.

Article 23, Site Plan Review and makes it possible for the Village Council to approve the Preliminary Site Plan after recommendation from Planning Commission. Motion by Becktel, support by Marshall to adjourn at 9:54 p.m. Vote: Ayes-all.

Karen Tucker
 Village Clerk

mission. The complete ordinance is available in the Village Office.

PARKS COMMISSION - Motion by Becktel, support by Brooks to allow the Men's Club to run water and electricity at Chi Bro Park. Vote: Ayes-all.

NEW BUSINESS COUNCIL COMMITTEE APPOINTMENTS - Motion by Marshall, support by Vought to approve the recommendations of the Village President for Committee Appointments. Vote: Ayes-all. List attached to minutes.

OTHER COUNCIL APPOINTMENTS - Motion by Schaffer, support by Vought to approve the recommendations of the Village President for Planning Commission, Parks Commission, Street Administrator, Zoning Inspector, Sewer Inspector, Building Inspector, Electrical Inspector, Plumbing Inspector, Fire Inspector and Attorney. List attached. Vote: Ayes-all.

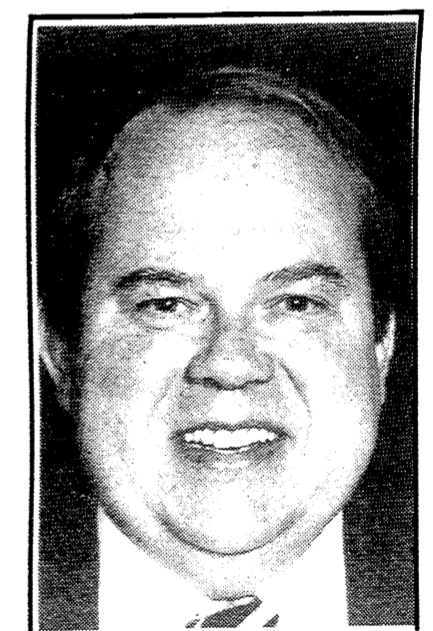
MANCHESTER STAMPING SEWER EXTENSION REQUEST - Motion by Schaffer, support by Taepke to have the Village Manager explore the request of Manchester Stamping to run a 4" forced sewer line to the Village wastewater treatment plant, at no cost to the Village. Vote: Ayes-all.

Motion by Becktel, support by Marshall to adjourn at 9:54 p.m. Vote: Ayes-all.

Karen Tucker
 Village Clerk

Balden Announces Candidacy

Max R. Balden has submitted nominating petitions for the Republican nomination for County Commissioner in the 8th District. The 8th District includes the Townships of Manchester, Freedom, Bridgewater, Saline and Lodi and the City of Saline. In making his announcement, Balden said, "The County Board of Commissioners has an unfortunate history of being known for excessive political bickering. Whether split by party, region, personality or just plain old power politics, too strong of an allegiance to a political faction does not contribute to good government. I intend to vote my conscience, guided by sound Republican principles and contact with constituents." Balden resides at 4312 Braun Road in Saline Township with his wife Deborah and sons David and Adam. He is currently a Supervisor with the Department of Patient Services at the University of Michigan Hos-



structive role in an elected governmental capacity."

Manchester Village Planning Commission Tuesday, May 10, 1994 7:30 p.m.
 Council Room, Village Hall

- AGENDA**
1. Roll Call
 2. Approval of Agenda
 3. Minutes of Previous Meeting
 4. Reports from Administration, Council, Commissioners & Public
 5. New Business
 - 5.1 Manchester Manor - Paul Antonelli question on setbacks
 - 5.2 Final Site Plan Review - Walco Foods
 - 5.3 Other
 6. Outstanding Business
 - 6.1 Continuing Codebook Review
 - 6.2 Other
 7. Adjournment

AGENDA MANCHESTER VILLAGE COUNCIL

Monday, May 4, 1994 7:00 p.m.

1. Call meeting to order
 2. Pledge of Allegiance to the Flag
 3. Minutes of the previous meeting
 4. Approval of Agenda
 5. Correspondence
 6. Treasurer's Report
 7. Accounts Payable
 8. Council Committee Reports
 - a. Sheriff Report
 - b. Planning Commission
 - c. Tree Board
 - d. Finance Committee - 9 Month Budget Adjustments
 - e. Solid Waste & Recycling
 - f. Ordinance Committee
 - g. DPW Report/ Manager Report
 - h. Parks Commission
 9. Old Business
 - a. 1994/95 Budget Update
 - b. Preliminary Site Plan Review - Walco Foods
 - c. Other
 10. New Business
 - a. Filter System Presentation - McNamee, Porter & Seeley
 - b. Other
 11. Adjourn
- CLOSED SESSION TO DISCUSS PENDING LITIGATION**



Church News

BAPTIST CHURCHES

NORTH SHARON BAPTIST CHURCH—Bill Winiger, Pastor; Clifford Whitenburg, Asst., Sylvan & Washburn Rds. 428-7222; SS 10:am; Morning Church 11:am; Eve. Church 7:pm; Weds. Bible Study & Youth Mtg 7:pm

CATHOLIC CHURCH

ST. MARY'S CATHOLIC CHURCH—Rev. Francis J. Murray, Pastor; Telephone 428-8811; Masses: Monday thru Wednesday, Friday 8:30 a.m., Thursday 7:00 p.m., Saturday 5:00 p.m., Sunday 8:30 a.m. and 10:30 a.m.

LUTHERAN CHURCHES

ST. JOHN'S LUTHERAN CHURCH—Rev. Dennis A. Falk, Pastor; Austin Road, Bridgewater; Telephone 429-7434; Sunday School 9:15 a.m.; Worship 10:30.

ST. THOMAS LUTHERAN CHURCH—10001 W. Ellsworth Rd., (Smiles North and 6-1/2 East of Manchester); Telephone 663-7511; Schedule: Church Service 10:45 Sunday, Bible Class and Sunday School 9:30 a.m.

ZION LUTHERAN CHURCH—Rev. Mark A. Weirauch; 3050S Fletcher Road; Telephones: Pastor 475-3481, Church Office 475-8064, Susan Wiley, Secretary 428-7268. Sunday School 9am; Worship 10:15am

UNITED METHODIST CHURCHES

MANCHESTER UNITED METHODIST CHURCH—Rev. Marsha Woolley, Pastor; 501 Ann Arbor St. Phones: Parsonage 428-8013, Church 428-8495. Sunday School 9: a.m., Worship 10:30 a.m., Coffee/Fellowship 11:30 a.m.

SHARON UNITED METHODIST CHURCH—Rev. Peggy Paige, Pastor, Corner of M-52 and Pleasant Lake Roads; Church—428-7714, Parsonage—428-8430; Sunday School 10:00 am; Worship 11:00 a.m.

MORMON CHURCH

CHURCH OF JESUS CHRIST OF LATTER DAY SAINTS (MORMONS)—Samuel Skidmore, Branch Pres; 1330 Freer Rd, Chelsea; 475-1778; Sacrament 9:30 am; Sun. School, 10:40; Relief Soc, Priesthood & Youth 11:40

NON-DENOMINATIONAL CHURCHES

COMMUNITY BIBLE CHURCH — Pastor Jody Riethmiller, meets at the Manchester Middle School in Manchester; Worship 10:00 a.m., Sunday School following, Evening Service 6:00 p.m.

FAITH COMMUNITY CHURCH—Scott Engelman, Pastor, 8400 Sharon Hollow Rd., Telephone 428-8709; Worship Service 10:00 a.m.; Sunday School 11:30 a.m., Sunday Eve Service 6:00 p.m.; LIFELINE 7:30 p.m.

IRON CREEK COMMUNITY CHURCH—Tom Butterfield, Pastor; English and Sharon Hollow Roads; Sunday School 10:00 a.m.; Morning Church 11:00 a.m.; Sunday Evening 7:00 p.m.

CHELSEA FULL GOSPEL CHURCH — John & Sarah Groesser, Pastors; Lima Town Hall 313-475-7379; Sunday 10:15 Prayer, 11:00 Morning Worship, 6:00 Evening Worship; Wednesday 7:00 p.m. Church School, all ages

NEW LIFE CHRISTIAN CENTER — 50 Freer Rd. (Covenant Church); Pastors Erik & Mary Nansen; Sunday 12:30 p.m. Praise, worship, Children's Church, 6 p.m.

CLINTON ASSEMBLY OF GOD—Rev. Richard Coury, Pastor; 13300 Clinton-Manchester Road; Phone 517-456-7510; Sunday School 9:30 a.m.; Worship 10:45; Sunday Eve 6:30; Wednesday Prayer, Bible Study, Youth 7: pm

UNITED CHURCH OF CHRIST

BETHEL UNITED CHURCH OF CHRIST—10425 Bethel Church Road at Schneider Rd.; Phones: Parsonage & Church 428-8000/429-7175; Church Service 9:30 a.m.; Sunday School 10:45 a.m.

EMANUEL UNITED CHURCH OF CHRIST—Rev. Brewster Wilcox, Interim, Rev. Nancy Doty, Associate Pastor; Telephone: 428-8359; 9:00 a.m. Sunday School, Worship 10:30 a.m., 11:30 a.m. Coffee & Fellowship

ST. JOHN'S UNITED CHURCH OF CHRIST—Rev. Nancy Doty, Pastor; 12376 Waters Road, Waters and Fletcher Roads, Rogers Corners, ; Worship and Sunday School 9:00 a.m.

UNITY CHURCH

UNITY CHURCH OF JACKSON—3385 Miles Road, Ackerson Lake, Jackson, MI, 517-764-6900; 11:00 a.m. Sunday Services and Sunday School.

EMANUEL UNITED CHURCH OF CHRIST

Wednesday, May 4: 6:00 Bell Choir; 7:30pm Adult Choir Thursday, May 5: 12 Noon Senior Meal, 3:30 pm Cherub Choir, 3:50pm Children's Choir, 6:00 Cub Scouts, 6:30 pm Brownies, 7:30 pm Women of Emanuel

Saturday, May 7: 9:am-3PM Garage Sale/Bake Sale (in Gym) Car Wash by Senior Youth Group; 5:00 Car Scavenger Hunt

Sunday, May 8: 9:00am Sunday School; 10:30 am Mother's Day Worship; 11:30 am Fellowship Time at the Parsonage; 12 noon-3pm Mother's Day Chicken Dinner in the Fellowship hall.

Monday, May 9: 6:30 pm Optimists; 8:00 pm Fair Board

Tuesday, May 10: 12 noon Senior Meal; 8:00pm Fair Board

Wednesday, May 11: 6:00 pm Bell Choir, 7:30 pm Adult Choir

ST. MARY CATHOLIC CHURCH

Saturday, May 7: Children's Choir, 3:30-4:45 pm; Sacrament of Confirmation, 5 pm

Sunday, May 8: Adult Choir, 9:30 & after 10:30 Mass; May Crowning at 10:30 Mass.

Monday, May 9: Girl Scout Troop 706, 3:30-5:30 pm

Wednesday, May 11: No morning Mass; Ascension Mass, 7 pm.

BETHEL UNITED CHURCH OF CHRIST

Thursday, May 5: 7:30pm Bethel Cookbook meeting; Saturday, May 7: 7:00 pm Car Rally

Sunday, May 8: 9:30 am Worship Service; Mother's Day; Sunday School 3&4, Kindergarten; 10:30am Sunday School Grades 1-8; 10:45 am Senior Choir

Tuesday, May 10: 6:30 pm Youth Choir Plus; 7:30 pm Experience in Practical Christianity

THE ANNUAL NATIONAL DAY OF PRAYER

WILL BE HELD AT THE WURSTER PARK FLAGPOLE ACROSS FROM THE GAZEBO

Manchester is joining together with the rest of our country on Thursday, May 5th, At this time, people of all faiths will be one voice, praying to God as a "company of believers" for this land that we all hold in common.

"Without God there could be no American form of government, nor any American way of life. Recognition of the Supreme Being is the first - the most basic-expression of Americanism. Thus the founding fathers of America saw it, and with God's help, it will continue to be." - President George Bush

1994, to celebrate the National Day of Prayer. An act of Congress has proclaimed the first Thursday in May as a National Day of Prayer. In accordance with this recommendation, people of faith will come together at noon at the flagpole in Wurster Park, to join in a few minutes of prayer - for our country, our leaders, our communities, our schools, our churches and our families.

In case of rain, we will meet in the shelter of the gazebo - same time, same day!

ZION LUTHERAN CHURCH, CHELSEA Wednesday, May 4: 1:30 & 7:45, Women of Zion Thursday, May 5: 1:30 & 7:30, Search Bible Study

Friday, May 6: 8:30 pm Eighth Grade Overnight Saturday, May 7: 10:00 Junior Choir Rehearsal for "Daniel"

Sunday, May 8: 10:15 Worship with Holy Communion, Special Presentation by Junior Choir of "Daniel".

Monday, May 9: 10:15 Worship with Holy Communion, Special Presentation by Junior Choir of "Daniel".

FAITH COMMUNITY CHURCH Wednesday, May 4: 7:00 pm Prayer & Bible Study "Forgiveness"

Saturday, May 7: Church Work Day

Sunday, May 8: Mother's Day; Sunday Morning Worship 10:00 "Song of a Mother's Heart", 11:30 Sunday School for all ages; 6:pm Evening Worship & Study of I Samuel

MANCHESTER UNITED METHODIST CHURCH Wednesday, May 4: 11:30 am & 1:00 pm Salad Smorgasbord

Thursday, May 5: 6:30 pm Youth Bell Choir, 7:30 pm Adult Bell Choir

Saturday, May 7: 8-12: Church Clean Up Day

Sunday, May 8: 9:00 am New Member Class, 9:00 am Sunday School, 10:30 am Worship

Monday, May 9: 3:15 pm Scouts

Tuesday, May 10: 10:00 am Lydia Circle; 3:15 pm Scouts; 7:00 pm Washtenaw County Food Program; 7:30 pm Membership & Evangelism Committee

Wednesday, May 11: 7:30 pm Bible Study

SHARON UNITED METHODIST CHURCH

Wednesday, May 4: 6:30 pm Mother-Daughter banquet, pot-luck, theme: Hawaiian Luau

Bye, Bye Birdie

Lenawee Christian School presents Bye, Bye Birdie on May 5, 6, and 7 on Centre Stage. This Broadway musical stars a teen idol, Conrad Birdie, played by senior, Eric Bowles. This satire of teen-age idols is set in the late fifties using humor to keep the audience entertained throughout.

In addition to Bowles, senior Tad Emptage, plays Albert Peterson. Rosie is played by Leah Garberich in her first starring role. They scheme together while Albert's domineering mother, played by LCS English teacher, Teresa Mattson, does her best to stop the romance.

Romance also buds between Hugo Peabody, played by senior

Nathan Averill, and Kim MacAfee, junior Kristi Elliott. It is abruptly interrupted by the entrance of Conrad, the idol of teens, who's been drafted into the army.

Over one hundred LCS students, teachers, and parents comprise the cast, chorus, and crews. They dance and sing many familiar songs such as Put on a Happy Face. The fun and excitement of this comic satire will be presented at the Christian Family Centre Auditorium on May 5, 6, and 7 at 7 p.m. Tickets may be purchased at the high school office for \$5.00 for adults and \$3.00 for students.

CANOE RACE

MANCHESTER'S 28TH ANNUAL SUNDAY, MAY 15TH, 1994 STARTING AT 1:00 P.M.

Table with 2 columns: Man/Woman/Adult/Child/Women, Choose Partner/Competition/Single Canoe/Kayak. Rows include PRE-REGISTRATION, DAY OF RACE, SPRINT RACE, APPLICATIONS CAN BE PICKED UP AT MANCHESTER PHARMACY, PYRAMID OFFICE SUPPLY, MOVIELAND AND THE COMMUNITY RESOURCE CENTER OR CALL (313) 428-7722.

CANOE & KAYAK RENTALS AVAILABLE - CALL SHARON HOLLOW ACRES CANOE LIVERY - (313) 428-0100 OR (313) 428-9373 \$10 PER RENTAL PER RACE. TROPHIES DONATED BY: CANOESPORT, COMERICA BANK-ANN ARBOR, COMERICA BANK-MANCHESTER, EDEN FOODS, FIRST OF AMERICA, GREAT LAKES BANCORP, MANCHESTER DAIRY QUEEN, MANCHESTER PHARMACY, MIDWEST FORD, THE MODEL SHOP.

FREEDOM TOWNSHIP SUMMER CLEAN-UP DAY

Saturday, June 11, 1994 9:00 a.m. - 2:00 p.m. Freedom Township Hall 11508 Pleasant Lake (at Lima Center)

- Please Bring: Household Refuse, Discarded Furniture, Mattresses, Scrap Metal and Iron, Appliances*. Please Do Not Bring : 55- Gallon Drums, Liquids of any Kind, Batteries, Tires, Fencing, Large Car Parts, Building Materials. Recyclables can be prepared in Mister Rubbish recycle bags and dropped at the recycle bins. Drivers License or Property Tax Statements will be required for proof of township residency.

* All refrigerators, freezers, air conditioners or any other appliance with refrigerants must be tagged by a qualified technician who has removed the freon or they will not be accepted.

Announcements

MHS Alumni Reunion Being Planned

Although it may have been one of the smaller graduating classes from the Manchester High School, the Class of 1944 is eagerly looking forward to celebrating their 50 Year reunion at this year's Manchester High School Alumni Banquet.

The Alumni Association was formed in 1877 and since that time has been an event eagerly looked forward to by many Alumni. President of the Association this year is Raymond Stockinger, Class of 1944. Mr. Stockinger and the Board of Directors have been hard at work planning an interesting and entertaining evening. Toastmistress for the evening will be Mrs. Elaine Reno Watson, Class of 1939. Special entertainment will be provided by The Cottonwood

Cloggers under the direction of Atticus Sumner.

Letters of invitation are being mailed to Alumni of 25 years or more the first part of May. Reservations will be \$12. and should be sent to Mrs. Phyllis Baker, P. O. Box 374, Manchester 48158, by June 1st.

Any change of address or name should be sent to Mrs. Marian Voegeding, 14355 Bethel Church Rd., Manchester, MI 48158.

A booklet listing all Manchester graduates since 1871 will can be purchased at the banquet or from Mrs. Lucile Williams at a cost of \$2.

All Manchester Alumni are welcome and urged to attend the June 18th Reunion.

NOTICE OF PUBLIC HEARING ON INCREASING PROPERTY TAXES

PLEASE TAKE NOTICE that on May 10, 1994 at 5:00 p.m., at the Washtenaw Intermediate School District, 1819 So. Wagner Road, Ann Arbor, Michigan, the Board of Education of Washtenaw Intermediate School District will hold a public hearing on the levying in 1994 of an additional proposed millage rate of .1690 mills for operating purposes pursuant to Act 5, Public Acts of Michigan, 1982.

The Board of Education has the complete authority to establish that 3.0727 mills be levied in 1994 from within its present authorized millage rate.

The maximum additional proposed millage rate would increase revenues for special education operating purposes from ad valorem property tax levies in 1994 otherwise permitted by Act 5, Public Acts of Michigan, 1982, by a maximum of five and one-half percent (5.5%).

If the additional proposed millage rate is not approved, the school district's revenue for the 1994-95 fiscal year will be zero percent (0%) higher than the school district's revenue for the immediately preceding fiscal year.

The figure for increase in revenue for operating purposes is based on the latest estimate of state equalized valuation of property located within the school district. State equalized valuation will not be finalized until after the fourth Monday in May. In the event that state equalized valuation as finalized is for any reason higher than the estimate used for this hearing, the Board of Education must hold another public hearing before levying millage on any higher valuation.

The additional dollars are needed to maintain special education programs and to provide for partial reimbursement to the ten local school districts for their special education programs and services.

The purpose of the hearing is to receive testimony and discuss the levy of an additional millage rate. Not more than ten (10) days after the public hearing, the Board of Education may approve all or any portion of the proposed additional millage rate.

The date and location that the Board of Education plans to take action on the resolution approving the additional proposed millage rate will be announced at the public hearing.

This notice is given by order of the Board of Education.

Michael O. Emlaw Secretary, WISD Board of Education

BAKE SALE Saturday May 7, 1994 9am - 3 pm Emanuel United Church of Christ 324 W. Main Manchester Sponsored by Emanuel's Senior Youth Group Suggested Donation for Car Wash \$3.00

Quality Rare Coins & Collectibles Located in Antiques Etcetera 230 E. Main Wed - Sat 10 - 5 Sun 12 - 5 428 - 9040 Buy any coin - receive an uncirculated wheat penny FREE

Reinhart Charles Reinhart Company Realtors DEBORAH ENGELBERT Sales Associate Off: 313/971-6070 Res: 313/475-8303 Fax: 313/747-7880 2452 East Stadium Blvd. Ann Arbor, MI 48104

Table with 5 columns listing various services and businesses: Reno & Nancy Feldkamp, DAN'S WESTSIDE AUTOMOTIVE, David Chartrand, WACKER'S GENERAL STORE, Keith's Barber Shop, Pilot Metal Products, MANCHESTER KIWANIS, MANCHESTER CAR WASH, Hendley & Datsko, PC Attorneys at Law, MANCHESTER TOOL & DIE, Dr. Charles Lyon, D.O., ALBERS ORCHARDS, You Owe It To Yourself... To choose a quality retirement. Brooklyn Living Center, 151 Constitution Avenue, 592-2828, Canton Detachment, Centers Inc., S-K Sales, Inc., Manchester Chiropractic Clinic, Manchester Plastics, Norm & Olga Walz, KLEINSCHMIDT True Value Hardware, HAARER'S MEETING PLACE, d-n-d design Interior/Exterior signs, Silk Screening Vinyl Lettering, Sanicaved Redwood (313) 428-9693, MANCHESTER MANOR, THE MANCHESTER ENTERPRISE, GENE & GERTRUDE SMITH PINNACLE ENGINEERING

School Board Candidates

Profiles of School Board Candidates

The Manchester Enterprise recently distributed a questionnaire to the announced candidates for the Board of Education. The questions covered both general information (spouse, children, education, work, volunteerism, and hobbies), and educational issues.

On educational issues, the following questions were asked:

1) How are you involved, currently, in the school system?
2) How can the School Board benefit from your presence?

3) What top three priorities should the School Board undertake to accomplish? Please elaborate on each priority in about fifty words.

4) Do you feel there is an overcrowding problem in the schools? What solutions would you like to see to this problem?

5) What is your opinion of the new school finance reform laws?

6) How do you feel about the new state law limiting teacher strikes?

7) Do you feel that our taxpayers are overburdened?

8) What do you feel should be the role of the School Board in the community?

These questions are not entirely subjective; they were suggested by members of the community at large. The length of the answers required was not specified - candidates were requested to use whatever space they considered necessary to answer the given questions. The answers will be printed in a series over the coming weeks prior to the June 13th election.

Candidates, and their supporters, are welcomed to present their views further in guest editorials or letters to the editor. We welcome your input.



Name: Patricia Sahakian
Spouse: John Sahakian
Children: Krista Sahakian - Junior at the University of Michigan, 1992 MHS Graduate; Jennie Sahakian - Sophomore at Manchester High School; Kevin Sahakian - 6th grader at Manchester Middle School

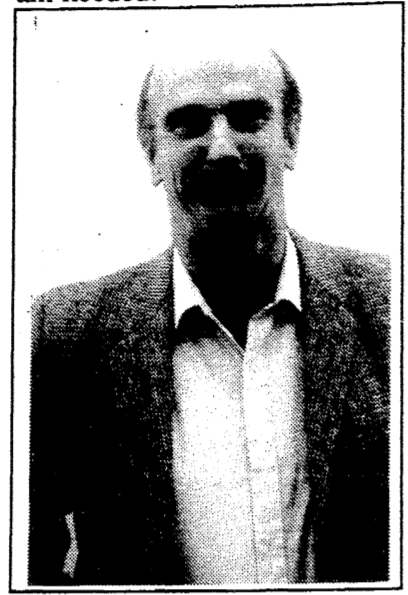
Education: Bachelor's Degree from the University of Michigan in Elementary Education
Work Background: Kindergarten Teacher - Flint Public Schools (1969-1974)

Volunteer Organizations: VISA - Volunteers Investing in Student Achievement
Athletic Boosters
St. Mary's Church, lector and 1st grade religion instructor
Washtenaw County Human Services Committee for the Manchester Area

Hobbies: reading, running and rug hooking

How are you involved, currently, in the School System? I am currently serving in my 8th year as a school board trustee, the last 5 years as President. In addition to serving on the board I have worked on many committees to review various

aspects of school operations in areas as varied as hot lunches, public relations, and reproductive health. I volunteer weekly in the Middle School as a tutor and office helper. At the High School I help with fund raising, announce track meets, and am always willing to help where I am needed.



Name: Michael Gleason
Spouse: Susan
Children: Al - currently a senior at Adrian College; Art - currently a sophomore at Manchester High School

Educational Experience: Hazel Park Public Schools; 2 years at MSU; Military trade schools; ongoing technical schooling. No pedigree, but paper trained.

Work Background: U.S. Postal Service, Hazel Park - 1966. McNerny Detective Agency, Detroit - 1967. U.S. Army, Vietnam & Thailand, 1967-70. GTE - 1970 - present (C.O. Tech - Saline)

Volunteer Organizations: Napoleon Lions Club Band
Hobbies: Music - Both Michigan Fiddler's Clubs, Dul-

cimer Club, Manchester Community Band (please come join us), Contra Dance, and every other Music Support Activity that I can find time for.

How are you involved, currently, in the school system? I want to be more involved in the school system, and in particular the local school system. The issues that took me to the state and federal Departments of Education do not affect me directly now that my handicapped son is in college. I still get some information and updates from the state and from organizations like the Learning Disabilities Association, but I believe that the most efficient way to make a difference in education is to do it locally and do it with a group of common sense people of which we need more on the school board. I've talked with parents, school staff, and board members. I'm still inside a Manchester school at least once a week.

I feel honored to have been asked to run for a Board position.



Name: Sonja Maria Schulz
My husband is: Gerhard W. Schulz

I was born March 17th, 1958 in an army hospital in Munich, Germany.

I have three children: Stefanie, 14 years old and an eighth grader; Patrick, 13 years old and a seventh grader; Jennifer, 7 years old and a second grader.

Education: I attended elementary school and then went on to secondary middle school in Germany. I then went on to language school and after two years received my diploma as a foreign correspondent and translator.

Work Experience: From 1978-80 I worked as an executive secretary for the European Space Operations Center (E.S.O.C) in Darmstadt, Germany.

Volunteer Organizations: I have been involved with Klager P.T.O. since 1989.

Hobbies: My hobbies include reading and knitting. I sing in our church choir (St. Mary's) and enjoy going to sports events. My children are my main interest and I enjoy being involved with all their activities, and the other kids, too.

How are you involved, currently, in the school system? I am a volunteer in the elementary and middle schools. I help at all middle school sports events. I am also a room parent for my second grade daughter.

Candidate Joe Turk's questionnaire was unavailable at press time.

-MJC

YOUR LAWN AND GARDEN GUIDE



There is nothing more therapeutic than GARDENING! It ranks as one of America's favorite pastimes.

You'll want to get started soon so check this guide for information, as well as all the places in our area to get everything you need for a beautiful garden, lawn, and landscape you can enjoy all Summer long.



Everything Begins With The Soil

It's an old gardening adage, but oh so true:

Everything begins with the soil. Without good soil there can be no lovely lawns, vibrant vegetables, fantastic flowers or sensational shrubs.

Why?

According to the experts at the Ampel Corporation, manufacturers of the Reveille line of soil nutrition products, it's because plant roots—whether they're grass, shrub, flower or vegetable roots—desperately need a soil environment that's suited just for them. As a result, the best way to help your garden support a variety of plants is to adapt the soil around each plant to meet its soil needs. In fact, all plants derive their major life needs, except sunlight, from the soil.

Inspecting the Soil

In all likelihood, your soil isn't as good a growing environment as it can be. But the situation can be rectified. Begin by grabbing a handful of soil to judge its consistency. Does it stick together in a small mound?

Is it thick and lumpy? If so, then it may be heavy clay. Clayey soil tends to choke off plant roots and deprive them of water and air. Should the soil you've picked up sift through your fingers, it may simply be sandy and light, meaning water and nutrients will virtually run off rather than be retained in the soil and available to plant roots.

Also be sure to check your soil's pH (its level of alkalinity or acidity), using a pH tester. The higher a pH level, the more alkaline in the soil. The lower the pH, the more acid there is in the soil. A pH level of 6.5 to seven is considered neutral, but remember that flowers, lawns and vegetables have an ideal pH just for them. Your local nurseryman or county extension agent can help you determine the necessary pH.

Soil Improvement 'Tips

If your soil is compacted and lumpy, or if it is damaged from road salt used during the winter, blend in a product such as Reveille "Pelletized" Gypsum to help break up and aerate

the mix or leach out the harmful salt. This will enable air and water to better penetrate the soil, thereby increasing potential root growth. Gypsum also provides soil with calcium and sulfur, which help restore optimum growing conditions.

All soils need a proper balance of nutrients to promote healthy plant growth, and the most important nutrients are nitrogen, phosphorous and potassium, also called NPK or primary nutrients. Spreading an allpurpose fertilizer will provide the soil with these primary nutrients, so that roots can take hold and grow strong. However, some soils may lack suitable levels of important secondary and micronutrients, such as calcium, sulfur and magnesium, which are conducive to healthy plant growth. The absence of some secondary and micronutrients, even just small amounts, can kill plants. This is a common occurrence that can quickly and efficiently be corrected by applying limestone, gypsum, sulfur or magnesium sulfate as necessary.

Limestone

In its gardening applications, limestone, or the faster acting hydrated lime, comes in pelletized, granulated, pulverized or powdered form. Each form naturally raises soil pH and provides calcium. Most limestone products are readily available at most lawn and garden outlets in several forms. For example, Ampel offers both limestone and hydrated lime in the pelletized form.

Gardeners may also want to consider using magnesium sulfate when soil testing indicates a need for magnesium and sulfur. For acid loving plants, use sulfur to lower pH.

Applications of Reveille High Calcium Limestone, for example, are ideal where magnesium levels are normal, while Dolomitic Limestone will add magnesium and calcium to the soil. Calcitic Limestone is the product of choice when soil magnesium levels are high and a pH increase is needed. Once pH levels are balanced, fertilizers can work more effectively to

help the plant thrive.

Unlike traditional gypsum and limestone the Reveille products are unique in that they are all pelletized. The advantage of pelletized products is they eliminate the dust cloud associated with spreading powdered gypsum and/or limestone while working quickly and efficiently. If you're unsure of your soil's condition or which nutrients your soil needs, contact your local nursery, garden center or County Extension office for recommendations and soil-testing assistance.

With pelletized soil nutrients a hand or push broadcast spreader can be used to distribute the material evenly. Once spread, be sure to incorporate the nutrients into the top two to three inches of soil.

The phrase "Everything begins with the soil" maybe a cliché, but a cliché is a timetested truism. Help your soil now and it will repay the favor later this summer with green lawns, tasty, bountiful vegetables and thriving flowers.

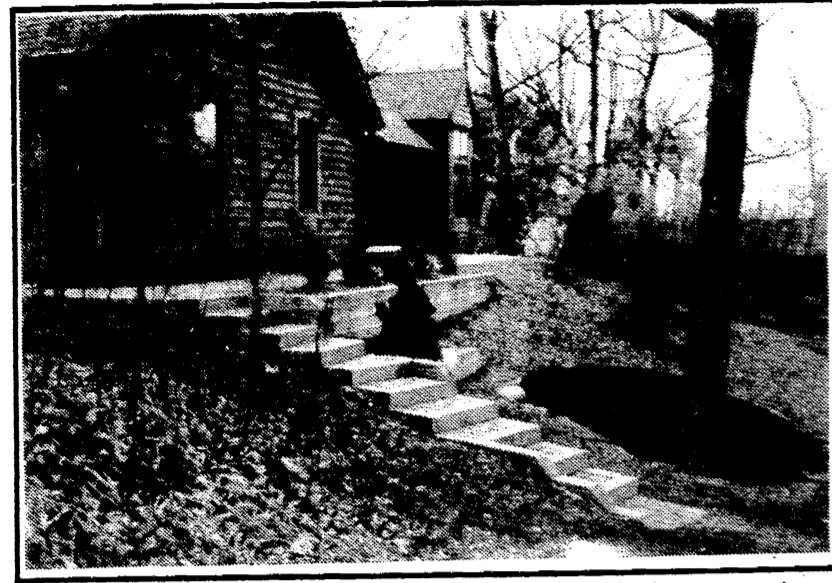
Remember MOM in a Special Way Mother's Day is May 8th Give her a night out, or come as a family and have breakfast together. 10% off whole house booking. Complimentary Flowers for Mothers (517) 467-7122 Dewey Lake Manor Bed & Breakfast 11811 Laird Road Brooklyn, MI 49230

Haarer's Meeting Place 223 E. MAIN MANCHESTER 428-9500 Mother's Day Buffet Sunday, May 8th Serving a Delicious Buffet of favorites; Roasted Turkey Breast, Round of Beef, Chicken & Shrimp plus soups, salads, veggies & desserts. Reservations encouraged * Mother's Day Drawing for Haarer's Gift Certificates * Friday Night Dinner Buffet for May is Mexican Fiesta HOURS: Tues - Thurs 11 a.m. - 9 p.m., Fri & Sat 11 a.m. - 10 p.m. Closed Sundays & Mondays

RDK R.D. Kleinschmidt, Inc. We Build Our Reputation Around Your Home 313/428-8836 ROOFING-SIDING-GUTTERS • Shingles & Flat Roofs • Siding & Trim • Seamless Aluminum Gutters • Replacement Windows 19860 Sharon Valley Road • Manchester

Remember Mother's Day is Sunday, May 8th Order your flowers, corsages and plants early The Flower Garden 110 E. Main St. 428-7422 Bring this ad in & receive 10% OFF your purchase

Landscaping



Landscaping around an old tree and walkway to a new home, by McLennan Landscape

Landscaping a home depends upon two basic conditions and several options.

The two conditions are: 1. Is this an older property with existing trees and shrubs, or; 2. Is this a new home with virtually no existing vegetation, trees and shrubs.

The various options available to a home owner will depend upon the home owners personal preferences, life style or time availability. A home owner that has very little time available for yard work will want to choose low maintenance shrubbery, trees, flowers and lawn design.

Conversely home owners

who have the time and inclination will opt for more time consuming designs and products. Perhaps shrubs, flowers and trees that need bed care, frequent pruning, fertilizing and spraying.

A Landscape Contractor will meet with the property owner and develop a plan goal. Does the property owner want low maintenance or a Better Homes and Garden showplace. Does the property have some specific problem? Is there an ugly foundation that needs to be hidden, no trees or too many trees on the site.

What does the owner want to accomplish; A nice public

view outlining the house and main entry; A personal view area where the owner can have a garden, flower beds, native area for birds and small game; A living area or kitchen viewing area that wants to be highlighted; A driveway or entrance walkway that wants to impart the welcome to this home feeling.

In essence a good landscape and a good landscape contractor will fit the owners landscape and personality together. If your personality desires wild exotic trees, shrubs and flowers, they are available. Conversely if you wish the conservative style of country gardens, massive trees and towering shrubs, that can be designed. Perhaps privacy is desired, mounding, evergreen trees, offset drive ways and privacy shrubs can accomplish your goals.

Meet with a reputable landscape contractor, talk to him, size him up. He will be sizing you up, both as a possible client and for your needs.

How do you find a reputable landscape contractor? Look around, see a nice house with desirable landscaping, ask the owner who the landscaper was, ask your builder.

Landscapers can provide a balanced look for all seasons. Spring might provide the early

blooming daffodils or purple flowering shrubs, maybe lilacs. Summer could be Rose of Sharon, Rose beds. Fall might be trees that change colors with winter providing evergreens to break up the blues. Dwarf plants do not require as much maintenance and genetically they are developed from the best plant stock.

Landscape Fabric's, such as Typar, block's weed growth and permits the passage of water, air and nutrients. This fabric will conserve water by minimizing evaporation. Cover the fabric with mulch, chips or stone and a very neat and easily maintained bed is visible. These fabrics can be used in the garden also. Simply roll the

fabric over the garden area. Cut an "X" at each plant location with scissors. Fit the fabric around each plant. Cover the fabric with 3 or 4 inches of mulch to protect from sunlight. These fabrics replace the older type of black plastic that was harder to work with. Fabric can work under brick walks, wood decks, outline timbers and retaining walls.

Trees and shrubs can be moved anytime during the year that the ground is not frozen. A tree or shrub, properly bagged and balled or with enough earth ball surrounding the roots can be successfully moved. Do not let the time of year scare you from landscaping your home or property.



Landscaping a bed of flowers, shrubs and ornamentals alongside of a driveway with a grass border between the bed and drive.

FEEDING & TREATING

Everyone enjoys looking at a beautiful deep green lawn. Many envy the neighbor who seems to always have the best looking lawn, but beautiful lawns are not accidental.

New lawns in our area are generally planted with a mixture of grasses. McLennan Landscape plants a mixture of Creeping Red Fescue, Perennial Rye and Blue Grass. Creeping Red Fescue, according to Mike McLennan, is tolerant to shade and grows rather well where trees block the sun. New varieties of Perennial Rye, are thin bladed and have the appearance of regular grass. Their advantage is that they come up before the fescues and blue grasses. Blue grass varieties do best under full sun conditions and stool out. Blue grass, when cared for, give that deep rich color and character of a good lawn.

Tim, of Tim's Lawn Care, says the correct application of fertilizer, pesticides, (herbicides, insecticides, fungicides) and water is key in developing a good lawn. Pesticides should be used sparingly and carefully. Some pesticides can be toxic and detrimental. Always store

pesticides out of reach of children.

A herbicide is a weed killer. Herb - is a plant that is considered a weed in a lawn. Example, a flower can be considered a herb if it is not a part of a lawn. A common herb in a lawn is a dandelion.

Insecticides control lawn insects. Both good and bad insects reside in our lawns. Generally good insects (Lady bugs) control bad (cinch bugs, grubs) insects. There is a threshold level that a lawn can tolerate. For instance, if your lawn is watered (irrigated) it can withstand 7 grubs per square foot. If your lawn is not irrigated about 3 grubs per square foot is maximum without treating with insecticide. Grubs will eat the root from the grass plant, leaving a spot of brown grass. With a bad infestation of grubs the grass can be picked up by the handfuls.

Cinch bugs attack the grass plant and the lawn looks as though it is drying out or thinning. The lawn can take on the appearance of droughty grass even when there is excess moisture available.

Fungicides control fungus related diseases. A fungus generally occurs when hot and hu-

mid weather arrives. Sodded clay lawn's are most susceptible to fungus. Most fungus infected lawns are the result of incorrect watering schedules. Watering should not be done in the evening or at night. The best time for watering is late morning or mid-day when the sun is out.

Aeration of your lawn is important. Aeration is a cutting or plugging of the soil through the grass bed. This allows the lawn to breathe, (especially on clay ground) admitting water, fertilizer and air to get to the plant roots.

Mowing height of the grass is extremely important. Three

(3) inches is an ideal height for the grass plant. Sunlight on the stem promotes a healthy plant. Do not cut more than 1/3 of the plant height at any one mowing.

Fertilizers are important for plant growth. Designations of fertilizers are like 12-12-12 or 22-8-8 or similar numbers. Fertilizers are composed of Nitrogen the first series of numbers. Phosphorus the second series of numbers and Potash the third series of numbers.

Nitrogen promotes the top growth of the plant and provides the deep rich color. Phosphorus and Potash promote root growth which sustains the plant.

Granular fertilizer applications in the spring with preemergent crab grass control is best. Sulphur coated fertilizers slow down the dissolution of the fertilizer. Fertilizer applications should be cut back in the heat of summer as not as much rainfall is available.

There is nothing wrong with letting your lawn become dormant during the summer. Grass will restore itself when the rains return. Good full lawns can lower the ambient temperature around a house by 10 degrees. Grass absorbs CO2 and releases oxygen. Good lawns provide good benefits.

Tim's Lawn Care
313-428-7001
"The Lawn Ranger"

- ORGANIC FERTILIZER OFFERED
- 12 YEARS EXPERIENCE
- LICENSED — STATE OF MICHIGAN
- CERTIFIED — STATE OF MICHIGAN
- INSURED
- A COMPLETE BALANCED FERTILIZER PROGRAM FOR YOUR LAWN

A WELL FED LAWN IS A HAPPY LAWN

Call Now For A FREE Lawn Analysis and Estimate 313-428-7001

"The Lawn Ranger"

For a beautiful lawn, give it some T.L.C.

Manchester shops @
UNDERWOODS
 LAWN CARE • TREE CARE • LANDSCAPING • NURSERY

Your connection for Landscape Needs - Start to Finish

DESIGN • DELIVERY • PLANTING

1-800-841-8873
 4373 North Adrian Highway (M-52) • Adrian
 Minutes from Manchester

NEW! FORD LS YARD TRACTORS

DESIGNED WITH STYLE... BUILT FOR PERFORMANCE

The new Ford LS yard tractor lineup is built for year-round use. Each model offers performance features to handle heavy cutting, sweeping, tilling or snow blowing. And, every Ford LS yard tractor is designed with your comfort and convenience in mind.

- Deluxe sliding-track seat
- Step-through deck design
- Quick-attach mower decks
- Welded angle-iron frame
- Cast-iron front axle
- Tilt steering

Add a wide variety of optional attachments, and you've got a total lawn care system that won't shy away from heavy yard work. Stop in today and let us show you the new Ford LS yard tractors. When you look at all of the big jobs they can handle, the only thing small is the price.

Saline Ford Tractor Sales, Inc.
313-429-5401

McLennan Landscape
 A personalized professional service

- Design Consultation
- Plant Installation
- Retaining Walls
- Wild Flowers
- Finish Grading
- Shade Gardening
- Hydro Seeding
- Brick Pathways

(313) 428-7005

Impatiens, Begonias & All Annuals \$7.50 a flat

Ivy Geraniums, Non-stop Begonias, and many more Hanging baskets \$8.00 Each & up

Thousands to choose from

Large selection of Flowering Perennials & Ground Covers

Buy direct from the Grower

Open 7 days 'til 8 pm
 (517) 451 - 5595
 1 1/2 Miles East of Britton on M-50 to Downing Hwy. then South 1 1/2 miles

"FREE" Delivery

POWER True Value EQUIPMENT CENTER

Stop in and see our New LAWN CHIEF. Line with Special Red Tag Discounts!

LAWN CHIEF True Value EQUIPMENT CENTER

15-HP Vanguard OHV 43-In. Hydrostatic Drive Lawn Tractor

The S-45 HYDRO Lawn Tractor features a hydrostatic drive system which allows infinite speed selections simply by moving a lever forward or backward—no stopping, braking, or clutching. It's like driving a car with an automatic transmission! This system is especially convenient when mowing in areas where numerous speed changes are required—such as shrubs, landscape and other obstacles.

NEW THIS SEASON!

SALE \$1,499.00

Overhead Valve/Commercial Engine
12.5 hp 39" Cut Lawn Tractor ... \$949.00



A Dream in Her Own Backyard!

by Teresa Benedict



Karen Reynolds watering her perennials in the 90 foot long greenhouse

Who does the flower beds at Carr Park? - Moondance Perennials. When speaking of perennials the person who is very knowledgeable about them is Moondance Perennials owner, Karen Reynolds. Karen has been working with plants for 35 years. "I've been gardening since I was 8 years old. Both of my Grandfathers and my Mother were gardeners who introduced me early to the world of Plants." Karen states that she has a passion for gardening and plants, both cultivated and wild.

Karen has a degree in Agriculture/Natural Resources from Michigan State, a certified nurseryman (we prefer nursery person), a member of the Perennial Plant Association and a Master gardener. She has taught horticulture for co-operative extension job training program for five years. Karen has worked at many greenhouse and garden shops throughout her time and managed a tree farm for five years where she added a perennial farm before starting her own business, "Moondance Perennials". Having her own business was

a dream of Karen's for the past eight or nine years. She just kept thinking of this dream and how she could make it possible. One day everything began to happen and the site for her new business was practically right in her own backyard. Karen found a site right across from her home on Bemis road where the property owner built her a greenhouse and work area, and converted the old goat shed into her office. Karen has lived in the Manchester area for 10 years at Columbia Lake. How did

she pick perennials to concentrate on? "I had done natural flower brochures at parks and recreation places and wanted to do something that would branch out from there, she said. When I chose to concentrate on perennials, at the time, they presented the biggest challenge and an area of unknown production methods. So it has been a lot of work as well as fun." Perennials have intrigued Karen since she was a child she would dig them from her neighbors throw-a-way piles and replant them in her own yard. Karen gains her knowledge through every avenue she can find. She attends classes, lectures and workshops on perennials thru-out the U. S. to keep her knowledge growing and to keep abreast of the latest in perennials.

Moondance Perennials does residential and commercial garden design, installation and maintenance. Karen also does garden and yard consulting - she will do gardens of any size. Karen has several customers she ser-

vice each year and has added many new ones in her three year old business. People can buy their own flowers and she will plant their gardens - she even has morning glory seeds started for one of her customers. Another type of garden she enjoys working with are herbs gardens. And of course Karen has several thousand varieties of perennials to choose from - Amsonia (plant) to Zembranis (miscanthus grass) from Peonies (a basic) to Tanacetum (a very rare flower). If there is a perennial out there, Karen knows about it - or will certainly find out about it if it is foreign to her.

While visiting Karen at her operation you feel right at home in her office - hearing the birds singing and seeing plants at many stages of life. Karen will take visitors to her greenhouse by appointment, or will come to your home for a consultation.

For a sample of Karen's work, watch the progress in the Carr Park flower beds. You're sure to see something beautiful growing there.

CALAMITY JANE'S
 109 E. Main 428 - 1122
 Mon-Sat 10 - 5 Sun 12 - 5
 Come on in and let us help decorate your Porch or Garden with unique antiques
 Watering Cans • Benches • Water Pumps
 Garden Tools
 Also Garden theme Jewelry

Moondance Perennials
 "Put a Little Magic in Your Garden!"
 Garden Consulting, Design, Installation & Maintenance
 Wide Selection of Perennial Plants
 Karen Reynolds
 Manchester, Mi. 313-428-9590

Schebor's Greenhouse
 14345 LOGAN ROAD MANCHESTER
 428 - 8078 MON-THURS 10-6 FRI-SUN 10-5
 Bedding Plants * Garden Plants * Hanging Baskets * Assorted Potted Plants

"Spring is Here!"
 For the BEST in Plants for your garden, patio, or in your home. Come see the selection of Annuals, Herbs, Perennials, Vegetables and the "NEW" Wild Flowers.
 Open 9 to 5:30 Mon - Sat (except Tuesdays 9 - 12 noon)
 Sundays in May 10 - 4
Emery's Flowers
 "Our Business Is Growing"
 (517) 263 - 2303
 4502 N. Adrian Hwy. Adrian - "In Birdsall"
 Just Minutes from Manchester

SERIES 2000 MODEL AGS 2130
 12.5 HP Kohler Command OHV Single-Cylinder Engine
 6-Speed AutoGear™ Transmission
 Direct Drive Shaft to Transmission, No Belts
 Electric PTO
 Welded, Full-Length, Twin-Channel Steel Frame
 Pivoting Cast-Iron Front Axle
 Manual Lift With Spring Assist
 Standard 38" High-Vacuum Deck
 Quick Frame Attach System
 Optional Mulching or Bagging
\$2,099
Saline Ford Tractor Sales, Inc.
313-429-5401
Cub Cadet



THE RECIPE FOR GREAT HOME-GROWN VEGETABLES

Luscious, leafy lettuce. Tempting tomatoes. Glorious green peppers. Captivating carrots. There's nothing like a basket of home-grown vegetables to tempt the taste buds.

This season, why not try to—literally grow your own salad. It's easier than you might think. Once you've selected your vegetables and a planting site, call your local county extension service agent to determine the best planting date. Ask the dates of the last frost in the spring and the first deadly frost in the fall. In frost-free areas, check on the ideal times to plant cool- and warm season vegetables. Cool-season vegetables include carrots, peas, potatoes and lettuce, while warm-season vegetables include cucumber, eggplant, tomatoes and squash. Corn and peppers require a long, hot growing season.

The next step is to pick from the many newly developed products available at the local garden center or hardware store that are designed not only to make reaping a bountiful bounty of vegetables easier, but to do so without the need for any chemicals.

Start with the Soil

As the saying goes, everything begins with the soil. Good soil - soil that is airy, full of vital nutrients and able to drain well

— creates an ideal growing environment by ensuring that plant roots can take hold, spread, and reach the moisture they need to thrive. To amend your soil consider using compost, peat moss and an all-natural garden fertilizer. A layer of compost will supply a natural dose of nutrients, while peat moss will aerate and neutralize the soil's pH (or acidity level). An organic garden fertilizer will provide additional nutrients.

Once you've amended the soil, the time has come to put your plants or seedlings into the ground. If you are transplanting an established vegetable plant or a potted seedling, be sure to set the roots deep enough into the soil, taking into account that the necessary depth will vary from plant variety to variety. If you are starting from seed, simply follow the directions on the back of the seed packet for proper spacing and planting depth to promote a healthy start.

Keep in mind that there are many ways to raise vegetables. For small gardens, planting in wide rows, up to 15 inches across, or in blocks, with seeds scattered at random, yields four times as many vegetables than those planted in narrow rows. Growing vegetables on vertical supports will help increase yields per square foot. Another option is to plant crops in raised beds,

where the soil is in a raised mound several inches above ground level, allowing the bed to warm up faster and provide for better drainage.

Avoiding Weeds

In response to the growing demand from home owners for environmentally-friendly and convenient methods of controlling weeds, one company, Easy Gardener, has introduced a brand new product called BioBlock. Made from 100 percent recycled fibers, BioBlock, which comes in easy to use rolls, is designed to stop weeds and then biodegrade, so it never has to be removed. The product also helps conserve moisture while thousands of tiny "MicroChannels" allow air and water to pass through to thirsty plant roots.

Simply lay overlapping strips of the material over the prepared planting site and cover the edges with soil. Then, using scissors or a knife, cut holes or X's in the appropriate spots and place plants through the opening, directly into the soil. At season's end, shovel or till any remaining BioBlock into the soil, where it will rapidly biodegrade.

Faster Plant Growth, Bigger Veggies

Early seed germination, accelerated plant growth and big-

ger vegetables can be achieved by putting to use a reusable plant and seed blanket. A product called Fast Start, for example, is a clear lightweight fabric that produces a "Greenhouse Effect" when placed over seeds or plants.

Simply lay the fabric over the garden bed, allowing room for plant growth, and use pegs to anchor the material. Fast Start will then block insects, provide protection from light frost and reduce watering frequency by holding in moisture. It will also discourage birds, rabbits and other animals from feeding on

your vegetable plants. The product's manufacturer recommends removing Fast Start once the temperature outside hits 85 degree Fahrenheit, so as not to "cook" your vegetables before they're ready.

Once your garden is quite literally bursting with ripe vegetables you'll have all the ingredients needed for a delicious homemade salad and you'll have done it the natural way. You'll thank yourself, and Mother Nature will thank you, too.



Backyard Salad Bars - To keep your backyard vegetable garden weed-free, install a biodegradable weed barrier such as BioBlock. Made from 100% recycled paper it can be tilled in at the end of the season.

Early Bird Special
PETUNIAS - \$6.49 A flat
 Other Flowering & Vegetable Plants - \$7.49 a flat
 Wide Variety of Geraniums
 3" - \$8.50/dz. 4" - \$15/dz.
 Impatiens & Begonias \$9.00 a flat
 Combination Pots, Hanging Plants, & Perennials
CHELSEA GREENHOUSE
 475 - 1353
 7010 Lingane Rd. Chelsea
 Serving the Public since 1901
 Mon - Fri 8am - 7pm Sat 8am - 5pm
 ALL PLANTS GROWN IN OUR GREENHOUSES

The controls are within reach. So is the price.

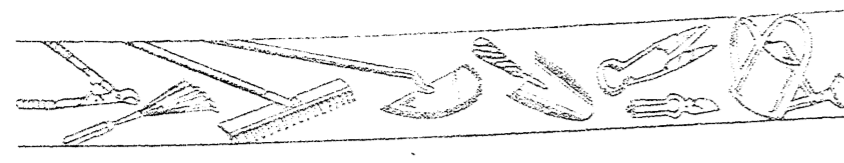


The AGCO Allis Classic riding mowers are designed for maximum operating simplicity, with all necessary controls at your fingertips. Now, we've priced them just as easily within your grasp. Stop by today for a free demonstration. **The AGCO Allis Classic riding mowers. Starting at only \$1499...and only at your AGCO Allis dealer.**



DIUBLE FEEDS, INC.
 4441 S. Parker Rd. Ann Arbor 994-1313
 Minutes from Manchester Sales • Service • Parts

MOWING YOUR LAWN



Putting the "Root" in Routine

By Bob Tracinski
John Deere Consumer Information Manager

It's all too familiar. You drag out the mower, pull the cord or turn the key and endlessly follow that well-trodden path otherwise known as your lawn. But this year, instead of methodically mowing your yard, why not search for the deeper meaning of lawn care? Cut through all the thatch and weeds. Probe beneath the surface. And reveal the secret to a more beautiful, vibrant lawn: a healthy root zone. Thriving grass comes from thriving roots. With deep roots, your lawn can find water and soil nutrients more easily, particularly in hot weather. An extensive root system—with ample food reserves—also helps your lawn survive dormant periods. And a healthy root system makes your lawn less susceptible to disease. How do you care for this important layer beneath the surface?—by caring for what's above it: Your grass. Think of your lawn as a mirror, of sorts.

In general, the higher the grass above ground, the deeper the roots below. So it's important not to cut your grass too short. Follow the standard "one-third" rule: Mow often enough so that you cut no more than one-third of your grass's height during any one trimming. This minimizes shock to the system and encourages deep root growth. If you miss a mowing, don't be tempted to "scalp" your yard. Stick to the one-third rule and mow your lawn an

extra time or two until you're back on schedule. Scalping can cause part of your root system to die, creating a harmful thatch build-up. More than one-half inch of thatch can harbor insects and disease, and block air, water and nutrients from reaching the root zone. In general, mow on the high side of the recommended range for your variety of grass. For Kentucky bluegrass, fescue and other cool-season varieties, cut at about 2 1/2 to 3 1/2 inches. With Bermuda and other warm-season grasses, mow at one or two inches. (St. Augustine grass is an exception among warm-season grasses and should be mowed at three inches.) If you're not sure what kind of lawn you have, take a sample to your county extension agent or lawn care professional. He or she can identify your grass

type and recommend a good mowing height. For the first mowing of the season, though, trim off an extra half inch to remove any brown, leafy material left over from winter. The same goes for your final mowing of the season, to slice up any excess leaves that could mat down turf during the dormant season and invite insects and disease.

Mowing your lawn when it's wet can cause problems by compacting damp soil and spreading fungus disease organisms in water droplets. Compacted soil also blocks the flow of air and water into the ground—starving and weakening the root system. And keep your mower blade sharpened. Dull mower blades can pull grass from the ground (particularly in spring) and can shred grass blade tips, providing an entryway for

disease. Next time you mow your lawn, reflect on its underlying growth. If your neighbors ask why you're so mesmerized, just tell them your lawn has a deeper meaning. But no matter how you explain it, remember to pay special attention to the root system. After all, it holds the key to a healthier lawn... and to peace of mind about lawn care. Now for some related mowing questions:

so, change directions each time you mow and overlap each swath by a few inches to ensure a uniform, smooth cut. This variety of directions can add spice to your mowing work, making it less routine and more interesting. It's amazing how a different direction can give you a new view of your lawn and your property's landscapes.

How can I avoid scuffing?

Scuffing occurs when you turn sharp corners or switch directions with your mower. Your mower's tires may scrape the turf and actually uproot some of the grass. Avoid scuffing by turning your mower on a driveway, sidewalk or other paved surface.

I mow in the same pattern each time I trim my yard. Is this a problem?

Try to alternate your mowing paths with each cutting. Grass that's mowed in the same direction each time could develop a "lean" that results in skipped spots and uneven cuts. If it's safe to do

GET THE TRACTORS THAT WORK AS HARD AS YOU DO!

Tractor sizes from 15hp to 35hp
Loaders • Mowers • Blades
Compact tractor with diesel engine

THE ONE TO SEE
S-K Sales Inc.
10000 M-52 Manchester
428 - 7182

It's That Time Again
Start planning your vegetable, flower and landscaped planting right now!

Top Soil - Mich. Peat
Lawn Food
Vegetables & Flowers
Bulk & Packaged Garden Seeds
Sphagnum Peat Moss
Cow Manure
Garden Tools
Western Bark
Potted Perennials
Hanging Baskets
Potting Soil

Atlas of Manchester
18875 W. Austin Rd.
428 - 7077

CALL NOW FOR BLACK DIRT DELIVERIES!
Order your black dirt now for May planting.

If you put a load of my peat on your garden - you'll get more output from your vegetables and flowers

Environmentally Safe - Rejuvenate the soil the Natural Way

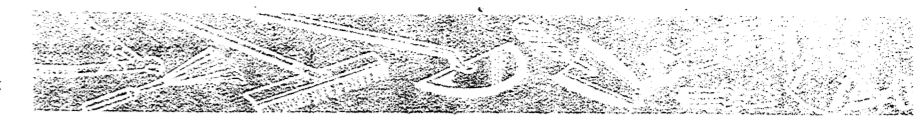
MICHIGAN PEAT SALES
428 - 9664

THE GARDEN CENTER
@ Wacker's corner of M-52 & Pleasant Lake Rd.
Open 7 days a week 'til 9pm
Shop EARLY for Best Selection

Bedding Plants * Hanging Baskets
* Preplanted Plants
Planting your pot or ours to order

Lawn Ornaments & Bird Baths in a wide selection
Stop by and see us for your gardening needs!

UNMOWABLE LAWNS?



By Bob Tracinski
John Deere Consumer Information Manager

Good morning, Mr. Phelps. Your mission this spring—should you choose to accept it—is to mow your yard properly and safely to enjoy the other pleasures of the season. Remember: An attractive lawn is vital to the environment and the security of your property values. Sometimes, even the spy business can seem easier than the obstacles and rugged terrain many of us face every time we mow our lawn. But with a few simple safety tips in mind, you can complete your assignment without a nick or scratch—to you or your mower blade. First, do a little reconnaissance. Patrol your yard for branches, twigs,

stones, pine cones... any object that could cause damage when hurled by a whirling mower blade. Discard or recycle these objects. Rake up any leftover fall leaves that could conceal potential U.F.O.s, or "unwanted flying objects." And make it a habit to check your yard before each mowing. The few extra minutes you spend surveying your lawn could save an expensive trip to a dealership or repair shop or, worse yet, a visit to the doctor. If twigs, leaves or other debris clog your mower's discharge chute, turn off your mower immediately. With a walk-behind mower, be sure to disconnect the spark plug wire to keep the engine from restarting if you accidentally turn

the blade while examining the mowing chamber. With a riding mower, turn the ignition key to "off." In either case, don't touch hot engine or exhaust surfaces and carefully use a stick or tool to dislodge the debris. *Never use your hands or feet to clear a clog!* These same tips should be followed if you accidentally run over an object. If you've hit a glass bottle or plastic toy, for example, cautiously remove any shards blown into the lawn. These pieces can be extremely dangerous if hurled outward from the mowing chamber. Inspect your mower, too, before you restart it. If the blade or any safety devices or mechanisms are damaged, have a qualified technician repair the mower

before you use it again. Some mowing obstacles are more permanent, like slopes, embankments and drop-offs. These, too, can be navigated safely by remembering some simple rules. Mow across slopes in your yard if you're using a walk-behind mower. If you were to slip and fall, your mower would be less likely to roll on top of you. Do the opposite with a riding mower: Mow up and down slopes for greater stability.

Hills too steep to mow safely shouldn't be mowed at all. Add a decorative ground cover or plant the area in native wildflowers. Steer clear, too, of embankments and dropoffs. Fill, level and cover any low spots or depressions that could turn an ankle. Regardless of your terrain, always keep family members, especially children, far away from the area you're mowing to protect them from flying debris. Never take passengers on a riding mower. And be particularly careful when backing up with riding or walk-behind mowers. Luckily, mowing safety tips aren't closely guarded secrets. So share these hints with your family, friends and neighbors, and you can an enjoy weekly reruns of *Mission: Mowable* this spring! Here are a couple of questions about mowing safety I'm often asked:

What's the best technique for mowing in tight areas?

Mow in a forward direction as much as possible, since it's easier to see where you're mowing and to keep your balance. If you have to mow a tight area in back-and-forth fashion, remember to always move slowly and look behind you when backing up. Consider using a weed trimmer or combination trimmer edger for these areas. Add ground cover to areas that can't be mowed safely.

What about trimming around trees?

First, landscape with mowing in mind. Remember that small saplings can grow into large trees, so be sure to leave ample mowing room for full-grown trees when planting. Prune low-hanging branches that could interfere with your vision while mowing or knock you off balance. Remove a one- to three-foot circle of grass around the base of your trees and fill the circle with pine straw or a soft mulch, like shredded tree bark. This makes trimming faster and easier. It also helps protect your trees from potential bumps, nicks and scratches.

TOP SOIL & PEAT
MSU TESTED — ORGANICALLY RICH

Retail and Wholesale | Screened Clean • Custom Blended Processed • Sand & Gravel | Residential and Commercial

SALINE SUPER SOIL

OPEN 9 A.M. - 5 P.M. • 6 Days a Week (Closed Sunday) • Pick Up & Delivery
10645 W. Michigan Ave., Saline, MI 48176
(313) 429-5085

SPRING on in for PLANTING FUN!

Large Variety of Hanging baskets
Annual, Vegetables, Perennials & Herbs, Jackson Perkins
Roses, Ornamental Bushes & Shrubs
Burpee Seeds & Garden Collections
Bulbs, Sets, Grass Seed, Fertilizers, & Organic Pesticides
Ponds & their supplies, Plants & Koi

Beautiful Fountains, Bird Baths & other Henri Statues & Yard Ornaments
Hummingbird & Oriole Feeders & Nectar
Chelsea Pets & Plants

901 S. Main (next to hospital) • Chelsea • 475 - 2630
Spring Hours: Mon-Fri 9am-8pm, Sat 9-6 Sun 11-6

T & N SERVICE, INC.
INSURED (313) 428-7002 (INC. 1985) FREE ESTIMATES

Commercial & Residential
Grounds & Landscape Maintenance

- Straight-Line-Design Lawnmowing
- Fieldmowing
- Vacation Mowing
- Spring & Fall Cleanup
- Asphalt Sealcoating
- Eavestrough Cleaning
- Shredded Bark/Sod Installation
- Wildflower Installation
- Landscape Management
- Tree & Shrub Installation
- Plant Installation & Bedcare
- Tree cutting & Pruning
- Shrub Maintenance
- Leaf Removal
- Snowplowing

COMFORTABLE, EFFICIENT, EASY TO HANDLE... AND THAT'S JUST THE PRICE

\$1,999

The rugged John Deere STX38 Lawn Tractor features a 5-speed, shift-on-the-go transmission, a 12.5-hp overhead valve engine, and a wide, 38-inch mowing deck. All the features you want at a low list price.

\$349
The dependable 14PC features a lightweight, die-cast aluminum deck and an easy-starting 5-hp engine.

\$20 OFF
The quiet, 28V power blower can also be turned into a vacuum (with optional attachment).

*** 90 DAYS SAME AS CASH**

NOTHING RUNS LIKE A DEERE!

NAPOLEON LAWN & LEISURE
6595 W. M-50, 1 mile west of Napoleon
1 - 800 - 645 - 6811 Mon-Fri 8 - 5:30, Sat 8 - 1

*Subject to approved credit. John Deere Credit Revolving Plan with 10% down payment. See your dealer for details. Tax, freight, set up and delivery charges may increase payment and may vary by dealer. After promotional period, finance charges begin to accrue at 14 1/2% APR. For non-commercial use only. All prices and financing offers good through June 30, 1994.

DON'T FORGET TO ENJOY YOUR SUMMER

If you would rather rest on your deck, sip Mint Juleps or have a beer there are other ways to have your veggies, flowers, shrubs, trees not to mention a manicured lawn. Find the people who can fill your needs in this Lawn and Garden Guide. Sit back and enjoy!

For your Veggie needs Chelsea Farmer's Market will be opening Saturday, May 7th, from 8AM to 1PM in the Municipal Parking Lot off Park and Middle Streets in Downtown Chelsea. This is the 5th season. Fresh produce, bedding plants, arts & crafts, honey & farm fresh eggs are featured weekly. Each vendor is required to produce what they sell, FRESH is the key word to describe the produce.

CHELSEA FARMERS MARKET

SATURDAYS
8 am - 1 pm
May thru October

Fresh Seasonal Produce • Bedding Plants
Fine Woodworking • Eggs
Arts & Crafts

Municipal Parking Lot
off Park and Middle

New Vendors
Welcome

DOWNTOWN CHELSEA

DECK PACKAGES

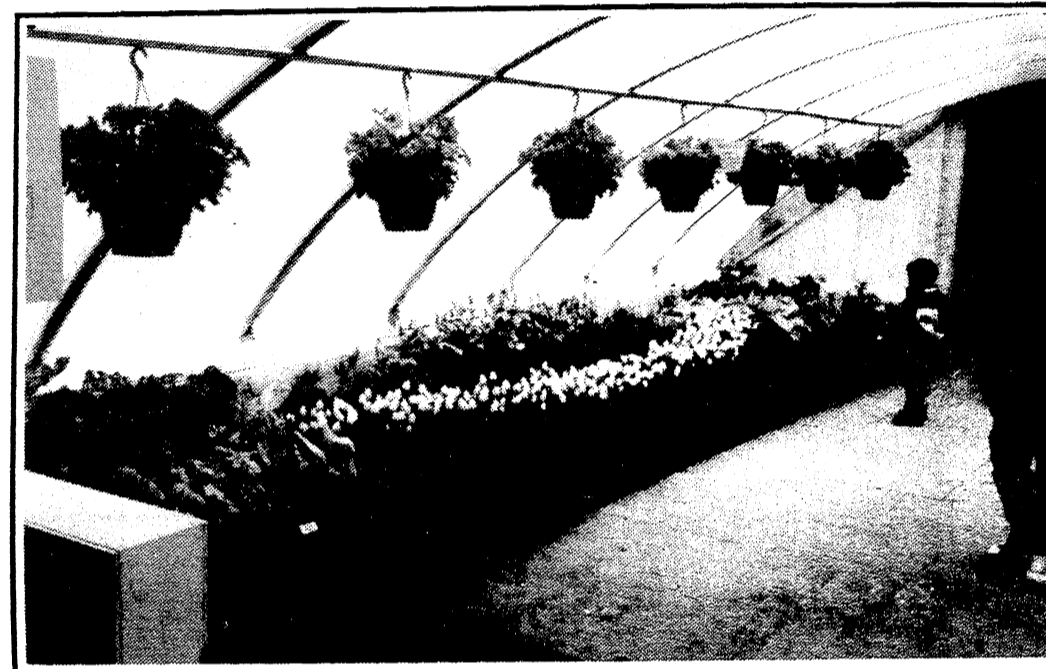
8' x 10' \$787.30
12' x 12' \$1095.78
12' x 16' \$1359.05

Included: Materials and Labor,
2 or 3 Steps and Railings
Custom Design decks are available too.

Will do other Home Improvements
Petch Custom Homes
Carpenter Contractor
Manchester 428-7106



This fabulous sunroom and deck was contracted by Bridgewater Lumber; Landscaping by McLennan Landscaping

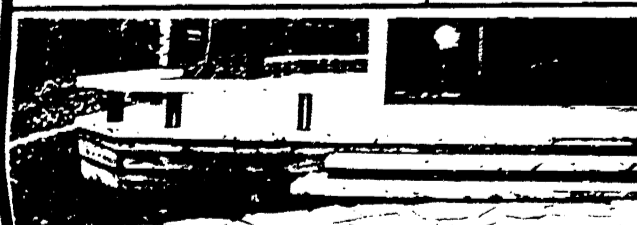


Check with our advertisers for all your flower and garden needs!

Come in today for a Great Selection of **Swing-N-Slide** products!!

<p>Sky Fort NE4437 \$347.15</p> <p>Slide, Merry-Go-Round and Fireman's Pole sold separately.</p> <p>INCLUDES LUMBER</p>	<p>Pioneer Plus 16' Trading Post NE4433 \$154.14</p> <p>Slide Sold separately INCLUDES LUMBER</p>	<p>Scout Westpoint with Scout Tower Lookout \$209.73</p> <p>Slide sold separately INCLUDES LUMBER</p>	<p>Scout Westpoint with Eagle's Nest Clubhouse \$317.00</p> <p>Slide and Fireman's Pole sold separately INCLUDES LUMBER</p>	
<p>Teeter-Tooter Includes Lumber \$61.93</p>	<p>Merry-Go-Round NE 4475 \$89.90</p>	<p>Teddy Bear Swing NE 4416 \$28.67</p>	<p>EZ Ryder NE 4490 \$56.37</p>	<p>8' Cool Wave Slide NE 4675 \$69.99</p> <p>10' Slide NE 4676 \$96.49</p>

We Custom Design Decks Too!!



LUMBER COMPANY
3870 BOETTNER ROAD

1 - 800 - 317 - 9663

Remember Mom!

Mother's Day is 'Build the Family Day'

After decades of creating awareness and the universal observance of Mother's Day, the National Mother's Day Committee has joined the crusade to rebuild the family as the focal point of our culture.

In recent decades, social values have changed so fast that family relationships have been hard-pressed to keep up with the new and oftentimes, hard-to-absorb values.

The result has been dysfunctional families without a male at the helm. Teenage pregnancies that defy the laws of traditional culture. Drugs that proliferate among boys and girls, still long years from maturity. Crime on the streets. Unbridled distribution of hand guns, automatic rifles, knives, among other weapons. Educational standards that have plunged and left a generation lost in a world that places the highest premium on skills that only a good education can develop.

Now, the Mother's Day Committee will help the restoration of family and function as the keystone of the democracy we've evolved over the centuries.

As we move deeper into the '90s, the violence on the streets, so pervasive today, must be reined in. And the family as a unifying force, headed not just by a mother, but by a mother and father, will be the fulcrum upon which the future of our organized society will be rebuilt.

When you observe Mother's Day this year, give a thought and a helping hand to a family struggling out of the morass of desperation that stems from cycle after cycle of welfare; year after year of dependence; day after hopeless day of dead-end opportunity.

Help bring a family together.

MD942240

HOW MOTHER'S DAY HAPPENED

Just about the time that the first wild flowers were blooming on the West Virginia countryside 86 years ago, the very first modern Mother's Day was celebrated in Grafton in a remote country church that was forever to become a national shrine dedicated to American and, eventually, international motherhood.

The idea for Mother's Day, as we know it, was inspired by Ms. Anna Reeves Jarvis, transplanted from her native state to Philadelphia, where her own mother died in 1906. The memory of all her mother stood for lead her to a crusade to establish Mother's Day as a perpetual tribute, not just to her revered mother, but to all mothers all over the world.

She announced her vision to a group of friends that were gathered to observe the first anniversary of her mother's demise. In the ensuing year, she enlisted the help of civic organizations and business leaders to help her bring her concept into being. Chief among her protagonists was John Wanamaker, the Philadelphia merchant prince and phi-

lanthropist, who campaigned with her to "make Mother's Day happen." And so it was just a year later in 1908 that Grafton, West Virginia, came to be the host town for the first Mother's Day.

It didn't take long for the Mother's Day idea to take off. By 1910, Governor William Glassman had declared Mother's Day to be a West Virginia State holiday. And then, just three years later, congress made it a national holiday to be observed in all the states and territories. Finally, in 1914, President Woodrow Wilson issued the first presidential proclamation to mark the day. So don't you forget the day — Sunday, May 8 — this year. MD942541



The Mother's Day Gift that Keeps on Giving... A Subscription to The Manchester Enterprise

\$15/year Washnetaw County
\$18/year Outside County

Name: _____

Address: _____

City: _____ Zip: _____

109 E. Main St., PO Box 37
Manchester, MI 48158
(313) 428-8173



Anna Reeves Jarvis

Greeting Cards Say It With Flare

Anna Reeves Jarvis' remembered her mother on Mother's Day (which she launched in 1908) with a specially penned note of recognition and affection. But that was 86 years ago, and good writing was a mark of accomplishment.

Our culture has become a bit more complex since those distant days. And the art of letter writing is, for the most part, a lost art. Time is of the essence — there's so much more to do than time to do it in. To the rescue, the ubiquitous greeting card has come of age.

Mother's Day greeting cards come in all different sizes, shapes and types. Some are little. Some are oversized. Some are emotional and sentimental. Some are humorous. Some are inexpensive. Some are not. Some are colorful. Some have built-in electronic messages. Some you can even create yourself on the store's special greetings card computer!

So you have no excuse. You can buy a greeting that best expresses your love for mom and get it in the mail for just over a buck. And you can take your pick of messages that best express the way you feel toward your mother.

So, if writing is not your forte, these days it makes no difference. All you have to do is sign the card, however it is designed, address the envelope and voila! Your friendly postman will deliver it on time...that is, if you mail it no later than May 1. After all, about 125,000,000 greeting will be in the mail at the same time, so get a move on. Mother's Day is May 8. MD942211



For Mother's Day!

We have special cards and gifts for special people.

When you care enough to send the very best!

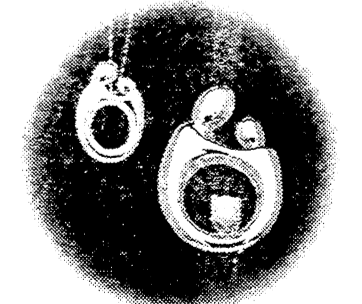
Hallmark

Manchester Pharmacy
128 E. Main 428-8393
Mon-Fri 9 - 6:30 Sat 9 - 5

♥ This Mother's Day give the perfect gift...

...the one that expresses your special bond in the most eloquent way — the classic Mother and Child™ pendant. Make it extra special by adding diamonds or birthstones to represent each child. No other gift is as timeless and unique a symbol of the love you share.

"Mother and Child™"



Available in 14K gold and sterling with or without a stone.

Winans Jewelry
Mon-Thurs 8:30 - 5:30
Fri 8:30 - 8:00pm
Sat 8:30 - 3:00
108 W. MAIN • CHELSEA • 475 - 2622

College News

Jennifer Binder

Jennifer Binder was one of ten accountancy students recently honored for high academic achievement by the Western Michigan University Department of Accountancy.

The students were presented with scholarships for the 1994-95 academic year at the annual spring banquet of Beta Alpha Psi accounting honorary April 8.

Jennifer received a \$1,000 William Maze Scholarship in Accountancy. A senior majoring in accountancy, she is the daughter of Lynn Keil and John Binder, both of Manchester.

EMU Commencement

Approximately 2,300 Eastern Michigan University Students were honored in commencement ceremonies April 24 in EMU's Bowen Field House. Detroit Mayor Dennis Archer delivered the morning commencement address and received an honorary doctorate of public service from the University.

Manchester students receiving degrees were: Angela Campbell, BA; Karla R. Lutton, BBA; Melanie A. Martin, BBA; Molly McGuire, BS, Cum Laude; and Dawn M. Wenk, BA, Magnum Cum Laude.

Washtenaw Community College Graduation

Washtenaw Community College associate degree and certificate candidates for April and June 1994 were recently announced. The commencement ceremony will be held at WCC on Saturday, May 14 at 9:30 am.

Graduate candidates from Manchester include: John R. Lochey; Kimberly Jane Porter; Donna E. Spiess; and Jennifer Lynn Wilke.

MSU Lists Spring Grads

Michigan State University lists 4,880 degree candidates for spring, 1994. Commencement will be held on Friday, May 6.

Speaking and receiving honorary degrees are D. Allan Bromley, and Ernest Green. Manchester degree candidates are James A. Diedrich, BS in Building and Construction Management, High Honors; and Sherry Lynn Rickelmann, BA in Purchasing & Operation Management.

Stephen Samonek

Stephen Samonek, of Manchester, has been placed on the Dean's List for the past semester in recognition of outstanding academic performance at GMI Engineering & Management Institute.

Samonek, a Thesis Senior in the Electrical Engineering program at GMI, was presented a certificate of academic achievement in qualifying for the Dean's List, which requires that students attain a grade point average of 92.0 or higher for the semester, with no course grade below 85.0.

As a cooperative education student, Samonek is employed by Orbit Form Inc, Jackson MI.

Marci I. Sloat

More than 160 top business students at Central Michigan University were inducted into Sigma Iota Epsilon on April 30. Sigma Iota Epsilon is a business administration and management honorary society that awards membership to students who earn outstanding academic achievements.

Marci Sloat, of Manchester, was among those inducted.

Kathleen Baran

Concordia College, Ann Arbor is pleased to announce Kathleen Baran has met the qualifications required and has received an offer of admission for the Fall of 1994. She is the daughter of Mr. and Mrs. Sigmund Baran of Manchester, Michigan. Kathleen will graduate from Manchester High School this spring.

Founded in 1963, Concordia is a four-year liberal arts college offering programs of study in Teacher Education, General Liberal Arts, Pre-Seminary Studies, Business, and Performing & Visual Arts.

University of Michigan Commencement

Some 6,000 University of Michigan students received their degrees on April 29 & 30.

Degree Candidates from Manchester were: Michelle Haag, BSN; Dulce Kappler, MA; Jennifer Lovalvo, BS; Paul Stucki, MBA; Bradley W. Taylor, MPH.

People

new arrivals

Amanda Lynn Kempfer

Amanda Lynn was born Saturday, April 23 at the University of Michigan Hospital, to Amy and John Kempfer. Amanda weighed in at 2 pounds, 5 ounces.

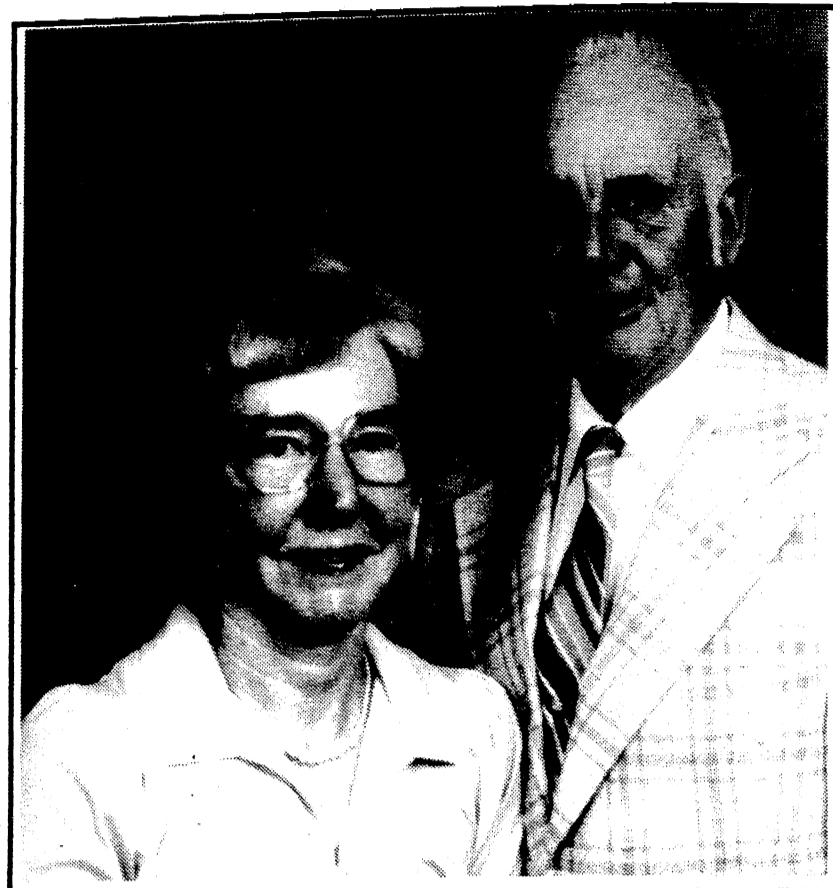
Grandparents are Gale and Linda Hopkins of Manchester, Neil and Terri Maitland of Ann Arbor, and Walt and Sharon Kempfer of Manchester.

Richard Charles Bartlett, II

Danielle Bartlett is pleased to announce the birth of her brother, Richard Charles II, on April 25th. Richard was born at the U of M Hospital weighing 8 pounds, 3 ounces.

Proud parents are Richard and Melissa Bartlett. Grandparents are Phil and Nadine Bullard of Ypsilanti (formerly of Manchester) and Walt and Millie Bartlett of Brooklyn. Great Grandparents include Charles & Myla Stoner of Brooklyn, Bill and Mary Cross, and Edna Koller of Saline. Great-great grandma is Mildred Hanes of Jackson.

GOODELLS CELEBRATE 50th Anniversary



George and Ruth Goodell will celebrate their fiftieth wedding anniversary on Friday, May 6, 1994. They will be honored at a family dinner at Haarer's Meeting Place on Sunday, May 9th, hosted by their children: Linda (Richard) Simkiss; Larry (Ann) Goodell; and David (Charlene) Goodell.

Clare & Beverly Knickerbocker Celebrate 40 years



Clare A. & Beverly Knickerbocker will be celebrating forty years of marriage on May 8, 1994. They were married at Grace Methodist Church in Detroit on May 8, 1954. Clare was born and raised in Chelsea, Michigan, to Maynard and Ethel Knickerbocker and Beverly was born in Detroit and raised in Dearborn Heights, Michigan, to Lawrence and Opal Tilford.

They have lived in Manchester for 28 years and resided in Chelsea during the early years of their marriage. Clare has retired from the Chrysler Proving Grounds where he worked for 37 years as a Wind Tunnel mechanic, and Beverly recently retired from the University of Michigan after 19 years as a secretary.

The couple have four children. Debbie resides in San Antonio, Texas, and is employed by the Bexar County Sheriff's Department. Pam is a Physical Therapist and lives in Walled Lake, Michigan. Sandy Haas is a secretary at the University of Michigan and lives with her husband, Martin, in Ann Arbor and Lisa Jarema is a safety analyst for Domino's Pizza Headquarters and lives with her husband, Kevin, in Ann Arbor.

Congratulations, Bill and Karen Wenk!

May your lives together be filled with love, joy and happiness for many years to come.

Love, Your Kids - Eric, Sarah, Korey & Tina

Senior Citizens

MANCHESTER AREA SENIOR CITIZENS News

by T.V. Ludwick

Eureka, I have found it! Did you notice my particular brand of spelling penguin in last week's column? As cold as it's been again, I expect one of those small tuxedo birds to come hopping past our window. We have had fun with your centerpiece, Jan. Another bird story passed on by Ray Gonyer at table talk at senior meal goes like this: "A fellow he knew ordered a shot of Old Crow and refused another with the quip 'I don't want to fly, just hop around a little'". It is good to laugh and that one had us nearly in tears. You don't know what you're missing by your absence at our senior meal program.

Thursday, May 5: Just three more craft classes for the season beginning at 9:30 at the Center. Then, on to Emanuel's dining room for birthday celebration for all you who are 55 or older and born in May. Chef Jan will delight us with her choice and it is always something special. Besides her willing volunteer Grandma Gillow, she has another sidekick named Matthew, her son, who is busy in the kitchen and on the road bringing in supplies. After all, it takes more than just our Jan to make it look so easy when serving well over one hundred area folks each Tuesday and Thursday. We appreciate

all who help, thanks. Get those dinner reservations in to Linda at 428-8359 ahead, or to Jan at 428-7630 before 10:30 AM on meal days. Back to the Center at 12:30 for bingo.

Friday, May 6: Senior bus will leave the Center at 3:30 PM for seniors to attend an open house and lunch at Chelsea Hospital which will be held from 4:00-8:00. You may call Erma Alber at 428-8707 for your ride on our senior bus to go along.

Sunday, May 8: Give your mom a hug, call or better yet—a visit on her special day. Even a card with letter enclosed is special if you are a long way from home. Moms love letters which they can read and re-read over and over again. Have a lovely day, all you mothers.

Tuesday, May 10: Council meeting begins at 9:30. Turkey will taste good at noon and we will 'gobble' it up. Center activities follow, come and help.

Wednesday, May 11: Seniors will leave the Center at 9:15 to tour of the Postal Museum in Marshall which begins at 10:30. You may go along by calling Erma.

Thursday, May 12: Craft class at 9:30; Chinese dinner at noon lunch (that will bring us all out!) and bingo follows at the Center at 12:30. THINK SPRING!!!

Michigan Welcomes the World

Overseas High School Students from Sweden, Norway, Denmark, Finland, Holland, Germany, Italy, Spain, France, Switzerland, Croatia, Turkey, Russia, Ukraine, Moldova, Czech Republic, Slovakia, Brazil, Colombia, Ecuador, Japan, Thailand, Hong Kong, Australia, Austria, Korea, Georgia, Poland, Portugal await a caring host family.

American Cultural Student Exchange

A non-profit tax exempt educational foundation
TO HOST - CALL NOW
Michigan - Eileen (517) 875-4074
or 1-800-SIBLING

One Friendship at a Time

Bruce A. Bates D.D.S.

500 Galloway Drive, Manchester, Michigan
(313) 428-8277

Complete Family Dentistry

• Adults & Children Always Welcome as New Patients.

We Accept Dental Insurance

VISA • MasterCard • Discover

Payment Plans Available

Gentle Dental Care

Relaxing Gas Available Upon Request

Thank You For Caring



For over 65 years, the American Legion Auxiliary has sponsored Poppy Day to remind America that millions have sacrificed their lives and health to keep our nation strong and free.

The poppy which grew wild on the battlefields of Flanders became, in the minds of the doughboys of World War I, symbol of the sacrifice which they had endured. It had flourished among the shelled buildings and bomb-scarred landscape. Its brilliant red bloom, so much like the blood which had been shed there, became a sign of hope and renewal for those who lived and walked away. For those who would never leave, those who had sacrificed their lives, it was a perpetual memorial to their bravery.

American Veterans brought home that image and planted it with the Auxiliary where it has bloomed every year for the benefit of those who served America. The Memorial Poppy contributions are devoted entirely to rehabilitation and assistance for veterans and their families.

Poppy Days in Manchester will be May 13 & 14. Poppies are always given away for a donation, and never sold.

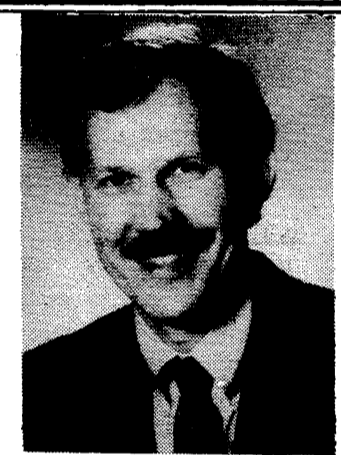
On behalf of America's veterans, thank you for caring.

ORTHODONTIST

RAYMOND P. HOWE
D.D.S., M.S.

515 S. Main Street
Chelsea

Telephone
(313) 475-2260



Callaghan's Bar

109 Main St. Brooklyn

Featuring: MATRIX

May 6 - 7 & 13 - 14 @ 9:30pm

We Love Moms



Brooklyn Living Center

151 Constitution Avenue, Brooklyn, Michigan 49230

Anton Retirement Centers Inc.

"Serving Jackson County for over 25 years"

Call Now 592-2828

or Just Drop In!



SENIOR POWER DAY - PLAN FOR ACTION!

Where can you find thousands of senior citizens, state and federal legislators, outstanding speakers, educational and entertaining workshops and a wide variety of other activities all happening on one day? SENIOR POWER DAY 1994, of course! The day is May 18 and the place is the Lansing Center in Lansing.

This year Senior Power Day is taking a whole new approach with its educational and advocacy efforts concentrated into this one-day event. A variety of activities will be available to choose from in order to accommodate individual preferences.

The main program will feature Henry Holstege, Ph.D., Professor of Sociology, Calvin College, Grand Rapids, as its keynote speaker. At the same time, participants may choose to attend workshops or the United States Senate Special Committee on Aging Public Hearing which will focus on a national issue related to health care.

Workshops presenters and topics include: Ameritech on telecommunications, the Federal Bureau of Investigation on scams, Michigan Consolidated Gas on energy efficiency, AARP on advocacy, Michigan Pharmacists Association on health care, and the Peer Prevention Players. Participants may browse through the Consumer Fair, visit the public hearing sponsored by the Michigan Commission on Services to the Aging, and attend the Gubernatorial Candidates Forum. The march to the Capitol will again be held with ceremonies following on the Capitol Steps.

There are a number of issues of particular concern to senior citizens on the 1994 Senior Power Day platform, among them home delivered meals, in-home health care services, auto insurance reform, protecting seniors' housing options, and access to quality nursing home care. Senior citizens who helped write the platform emphasize that every person should have access to affordable health care.

This year lunches are being donated courtesy of Area Agency on Aging Region III and locally-owned Lansing Area Domino's Pizza. Additional support for the lunches is being provided by the Michigan Residential Care Association and Michigan Education Association.

All this is obviously too good to pass up! The event is still free of charge; however, tickets are limited due to reduced availability of seating and capacity at the Lansing Center. So, don't delay—seniors wishing to attend should call their local Area Agency on Aging or the Senior Power Day office (517/482-4725) today to learn about ticket and transportation information!

WHAT IS YOUR PROPERTY WORTH?
Call for a FREE Market Analysis!
Brian Brickley
Multi-million Dollar Producer
662 - 8600 or 714 - 9852
HOMES • LAND • FARMS • INCOME PROPERTY

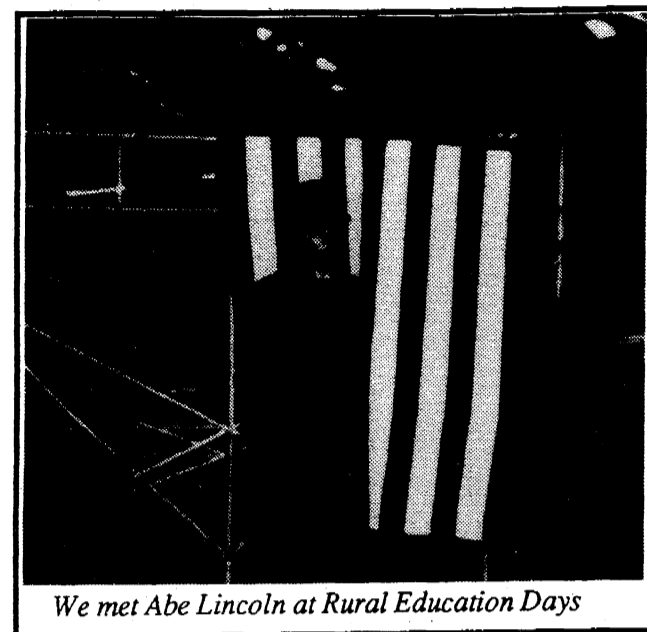
CONGRATULATIONS, Tyler Pate Powers for receiving first place in sparring at the 21st annual U.S. Tae Kwon Do Han Moo Kwan Association open Martial Arts Championships at the Taylor Community Center on April 16, 1994. Tyler is a 3rd gup Red Belt. He trains at Chelsea Tae Kwon Do. His instructor is Michael K. Poxson.

Schools

Third Grade Visits Rural Education Days at Washtenaw Farm Council Grounds

stories by : Ian Chartrand, Joel Makielski, Jenny Meyer, Kate Meyer, Elizabeth Okey, Graham Parker-Finger, Kevin Walter & Benjamin Wojtas

On Wednesday, April 27, 1994, the Klager third grades went to Rural Education Day. This is the fourth year it has happened. First we got on the bus at Klager School. We rode to the Saline Fair Grounds and we got out our lunches and ate. After we got off the bus, we got with our groups. We saw a man in a cow suit who went around shaking everyone's hand. (Ian)



We met Abe Lincoln at Rural Education Days

A man dressed as Abraham Lincoln shook our hands, when we came into the Michigan exhibit.

We sat down on benches and we waited for everyone to sit down.

A man came out and said, he was glad we could be there, and don't run or litter. Then he introduced Abraham Lincoln, our 16th President.

Lincoln told us how Michigan began and how the products made in Michigan, like potatoes, pickles, sheep raising, hog raising, and different types of flowers that are grown in Michigan.

When he was talking to us he showed us the areas of Michigan on the floor. Someone had neatly drawn Michigan's outline with white powder, on the floor. Inside the big map was all of Michigan's products. Then we got in groups and went off to the other exhibits. (Elizabeth)

At Rural Ed Day Klager Kids

School Lunch Menu

- MONDAY, MAY 9: Chicken patty on bun, hash brown patty, dill pickles, peach half, milk.
TUESDAY, MAY 10: Boneless Rib-B-Q, Bagelette & Butter, Scalloped Potatoes, Sliced Carrots, Fruit Cocktail, milk.
WEDNESDAY, MAY 11: Fish sandwich; tater tots; cole-slaw; jellow with fruit; milk.
THURSDAY, MAY 12: Oven fried chicken; whipped potatoes with gravy; mixed vegetables; dinner roll & butter; pear half; milk.
FRIDAY, MAY 13: Nacho Supreme; cheese/salsa/sour cream; corn; fresh fruit; milk.



GARAGE SALES See Classifieds page 14

saw a calf. It was black and white. When we sat down I took a picture. Keith Weidmayer gave us informa-

Then you have to comb it little by little with a special comb until it gets fluffy. Next you make it into yarn by spinning it. After that you put two pieces together and you have yarn. But she didn't want white yarn, she wanted red and blue. All she had to do was dye it. My favorite yarn was red because it was dyed by red kool-aid so that was everyone's favorite color of yarn. (Kate)

They had a leadership club from Manchester be the leaders and show people the exhibits. They were all high schoolers. They were leaders the whole day. Some of them watched over the animals in the Animal Barn. (Kevin)

He said it was a baby and that he had close to 80 cows. The calf got up and looked at us, then it laid down. It was in a small pen. People asked lots of questions about her. He also said that you need a special food. (Ben)

When we went to Saline we saw lots of exhibits. My favorite was the wool exhibit. First the lady told us about how to make things out of wool and this is what she said. The first thing you have to do is get the wool off the sheep by cutting it. It doesn't hurt, just like you get a hair cut and it doesn't hurt.

The soil exhibit was fun because I learned how to take care of the earth better than I knew how to. Farmers leave crop residue on their fields to hold the ground together. The exhibitors cut an apple in half twice and put three pieces aside and said this is the water and the one left is land. Then they cut in half twice again and took one piece away because it was good soil and the other places are dry lands. Then they took the peel off of the apple. This was good soil, and this is how much planting ground we have in the

whole world. (Joel)

I am going to tell you about the corn and machinery exhibit. When we went in we sat down on chairs



Everyone had a good time - Chaperones too!

and the lady there told us about corn. She told us about the machinery in the room that was used to plant and harvest corn. There was a combine there that was \$140,000! And there was a wagon for \$9,000! There was a planter there for \$25,000! When the exhibit was almost over we got to feel the corn and other corn products, and get a closer look at the machinery. (Graham)

At the barn animals exhibit, they had baby piglets that I've never seen before. They were spotted like dalmatians. They had a golden pony

and kids were feeding it hay. They were trying to hatch quail eggs, by heating them. They had kittens in a cage. They had little lambs and a mother ewe. They had a cow, a

rooster and a hen. My favorite animals were the lambs. (Kevin) The last room we went to was the snack room. In the snack room there were lots of samples of Michigan foods. There were: Apples, sausages, ice cream, crackers with honey, beans and potato chips. All of the snacks were very very good. The snack I liked best was the potato chips. (Jenny) After we got through all the exhibits, we saw a plastic cow eight feet tall. Then we got on the bus and went home. Everyone had a good time. (Ian)

In Celebration of School Family Day May 3, 1994

We recognize the teachers, administrators, aides, secretaries, bus drivers, custodians, student helpers, students, Board of Education, parents, and community for their caring, their work, and their dedication, to make Manchester Community Schools the excellent educational institution that it is.

Please accept congratulations for the large and small accomplishments that occur here every day: All 1994 Graduates earning Michigan Endorsements in Math, Science, and Reading, Middle School Equations Participants earned 1st and 5th place, High School Academic Games Team placed 2nd in math, D.A.R.E. Program at Klager, Student Exchange Program in the High School, Cross age tutoring in the middle school, Band Students participating in District Solo and Ensemble Festival, High School Regional Football Championship, Recycling in the Middle School, the Klager Circus is coming to town soon, special education programming for more than 100 students...and more!

Mon-Thurs 10am - 10pm Fri 10 - 7 Sat 8 - 6 Sun 1 - 6



TROPICAL EFFECTS Tanning Salon 20436 E. Austin Rd. Featuring the Wolff System

Walk-ins Welcome 428-0504

VENUS Swimwear & Accessories

FOX TENT AND AWNING CO. WE RENT TENTS FOR ALL EVENTS. TENT RENTAL! COMPANY PARTIES • GOLF OUTINGS • EXHIBITS • SHOWS. 617 S. ASHLEY • ANN ARBOR • (313) 665-9126

Sula Darlene Jeffers ATTORNEY AT LAW 146 E. MAIN STREET P.O. BOX 625 MANCHESTER, MICHIGAN 48158 (313) 428-8190

School & Sports

Manchester Freestyle Wrestling

Fifteen wrestlers went to Districts in Dexter on April 30, and eleven placed, which qualifies them for the Regional meet to be held May 7 in Holt, Michigan.

Josh Ritter, 4th place, James Tobias, 1st place; Caleb Westcott, 4th place; Brian Meadows, 2nd place; Thomas Breilein, 3rd place; Joshua Tobias, 4th place; Tyler Breilein, 4th place; Willy Slocum, 3rd place; Justin Knouase, 3rd place; Jeremiah Tobias, 1st place; David Herman, 2nd place.

Mark Trinkle, Dan Fleck, Noah Kuhn and Josh Knouase gave it their best shot but didn't get out of the first round. Next Saturday, at Regional, medal winners will go on to the State Finals.

-- by Marilyn Knouase

LAST DAY OF REGISTRATION SCHOOL ELECTION

NOTICE OF LAST DAY OF REGISTRATION OF THE ELECTORS OF MANCHESTER COMMUNITY SCHOOLS WASHTENAW AND JACKSON COUNTIES, MICHIGAN

TO THE ELECTORS OF THE SCHOOL DISTRICT:

Please Take Notice that the annual school election of the school district will be held on Monday, June 13, 1994.

THE LAST DAY ON WHICH PERSONS MAY REGISTER WITH THE APPROPRIATE CITY OR TOWNSHIP CLERKS, IN ORDER TO BE ELIGIBLE TO VOTE AT THE ANNUAL SCHOOL ELECTION CALLED TO BE HELD ON MONDAY, JUNE 13, 1994, IS MONDAY, MAY 16, 1994. PERSONS REGISTERING AFTER 5 O'CLOCK IN THE EVENING ON MONDAY, MAY 16, 1994, ARE NOT ELIGIBLE TO VOTE AT THE ANNUAL SCHOOL ELECTION.

Persons planning to register with the respective city or township clerks must ascertain the days and hours on which the clerks' offices are open for registration.

This Notice is given by order of the Board of Education.

Bruce C. Abbott Secretary, Board of Education

FUND RAISING Manchester Sportsman Club 8501 Grossman Rd. Friday 6:45 p.m.

Manchester American Legion 203 South Adrian Saturday, 7:00 p.m.

***** 517-265-3055 ***** 24 Hour Movie Hotline ADDIAN CINEMA 6 3150 N. ADRIAN HWY. Shows Before 6 PM \$3.00

May 6 - May 12

CLEAN SLATE PG13 Fri & Mon-Thurs 5:15, 7:30, 9:40 Sat & Sun 1:10, 3:10, 5:15, 7:30, 9:40

NO ESCAPE R Fri -Thurs 7:30, 9:50

MIGHTY DUCKS 2 PG Fri & Mon-Thurs 5:30 ONLY Sa 1 & Sun 1:20, 3:20, 5:30

THREESOME R Fri & Mon-Thurs 9:20 ONLY Sat & Sun 3:20, 9:20

COPS & ROBBERSONS PG Fri & Mon-Thurs 5:20, 7:20 Sat & Sun 1:20, 5:20, 7:20

BAD GIRLS R Fri & Mon-Thurs 5:40, 7:40, 9:45 Sat & Sun 1:40, 3:40, 5:40, 7:40, 9:45

P.C.U. R Fri & Mon-Thurs 5:15, 7:15, 9:15 Sat & Sun 1:15, 3:15, 5:15, 7:15, 9:15

3 NINJAS KICK BACK PG Fri & Mon-Thurs 5:10, 7:15, 9:30 Sat & Sun 1:00, 3:00, 5:10, 7:15, 9:30

New Klager Playground Equipment Dedicated



John Adams, PTO President, Christina Hakken, Ms. Kathleen Hakken, Heidi Hakken and Ms. Yvonne Henry, Klager Principal, with dedication plaques for playground equipment.

On Friday, April 15th, the dedication of Klager's new Fitness Center was held, made possible by contributions from various businesses and individuals in the community.

The parallel bars at the Fitness Center were dedicated in memory of Greta Hakken. A plaque is on display at Klager School.

Also hanging in the lobby is a large plaque recognizing and thanking the many contributors from the community who made this project possible.

The community is invited to come to the Klager playground to see the new equipment. The PTO is very proud to have been able to assist in this effort.

Ten Year Level Term Life Insurance: Low Cost Peace Of Mind

Ten Year Level Term life insurance from Auto-Owners is designed to give you peace of mind without putting a financial burden on your family members or business partners. Call us for all the details and special low rates.

Auto-Owners Insurance Life Home Car Business -The No Problem People-



SUTTON AGENCY Connie Widmayer, Agent 136 E. Main 428-9737

Oil Change Special \$15 Everyday Low Price (up to 5 qts. of oil, foreign cars excluded) Full Recycle Machines for air conditioners and anti-freeze We Turn Rotors & Drums

- Brakes Tires Exhaust Tie Rod Ends Shocks & Struts CV Shafts Tune Ups Batteries Front End Alignments Transmissions Radiators

Mon - Fri 7 am - 7 pm Sat 8 am - 5 pm Closed Sundays

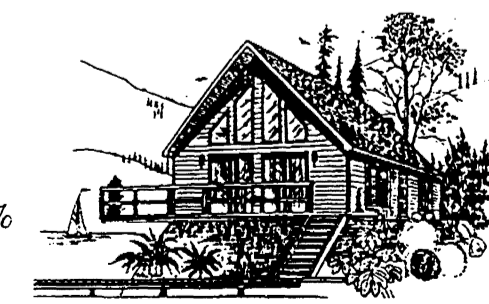
BENEDICT'S SERVICE 24 Hour Wrecker Service 327 W. main St. 428-8576

SELECT HOMES OF JACKSON, INC.

3570 Ann Arbor Rd. - Jackson Mon - Sat 10 - 6 (517) 764 - 6670



- Singles - over 60 floor plans Doubles & Modulars - over 100 floor plans HUD - BOCA - Drywall Cape Cods - Two Stories - Ranch 4 different Manufacturers Several different financing sources: as low as 8% Land packages available 12+ units in stock to choose from!! \$1500 Rebate on Crest Homes



We feature homes by Crest - Carrolton - Schult - Liberty and we have the Largest Parts and Service Department in the area!

You can be a HOMEOWNER! See SELECT HOMES OF JACKSON TODAY!!

COUPON Tuesday & Wednesday Night Summer Special May 3 - August 31, 1994 Buy 1 Dinner - Receive 2nd Dinner 1/2 OFF* Leutheuser's RESTAURANT 413 E. MICHIGAN AVE. SALINE • (313) 429 - 9340 Tues & Wed Dinner Hours: 4:30 - 9 p.m. Reg. Hours; Tues - Thurs 11 am - 9 pm, Fri & Sat 11 am - 10 pm, Sun 11 am - 8 pm MUST PRESENT THIS COUPON WITH DINNER

CLASSIFIEDS

SERVICES

Michigan Peat Sales: Black dirt for sale \$15 a yard delivered. Fast delivery. 428-9664 tfn

Lost or Found a Pet? Call the Huron Valley Humane Society. 662-5585. tfn

Felder Painting: Interior and exterior. Free estimates. Senior citizen discount. Phone 428-8506 tfn

Black Dirt For Sale: By the pickup load or delivered. Dozer and backhoe work also available. 428-9265. tfn

Benedict Painting: Call Chuck for free estimates. 15 years experience - interior & exterior painting. 517-536-4812. 12/94/pd

Excavating: Sand, gravel, backhoe and bulldozing. Reasonable rates. 428-9265 tfn

Little Wack Excavating: Basements. Drainfields. Bulldozing. Black Dirt. Topsoil. Sand. Gravel. Ponds. Snow Removal. Salting. Paul W. Wackenhut 313-475-8526. 6/94/pd

Maintenance Unlimited: Seamless Gutters, roofing, siding, interior and exterior remodeling. FREE ESTIMATES 517-263-7371 3/3-4/21p, tfn

Farmers' Sand and Gravel. We deliver and spread driveways. 475-8850 tfn

Alber Excavating Basements, drainfields, driveways, top soil, black dirt, gravel, sand & snow removal. Steve Alber 517-536-8257 or 428-8636. 6/94p

Piano Tuning and Repairs: Qualified Technician since 1977. Ronald Harris, 475-7134 12-16/6-30pd

Spring is here, time to mow your lawn. Let Jon's Custom Mowing do it for you. Quality Service since 1986. Call for free estimate. 428-7296 5/12

Window Washing and General Cleaning. Free estimates, fully insured. Great Lakes Janitorial 475-3709 4/28-5/5

Wallpaper hanging/stripping •Quality Wallpapers (now 30% off) •Coordinated fabrics & bedding •Decorating consults •Antiques, buying & selling •Furniture and accessory arranging "MY SISTER'S HOUSE" Juli Troz 428-7117. tfn

Welding and Fabricating Services. Free Estimates. Pickup and Delivery available. Call evenings and weekends. 517-536-4703 5/5/12/19

Paint Crafter's Ltd. 313-429-3880 Drywall Plaster Repair •Power Washing •Woodstaining •Deck Refinishing •Minor Carpentry •Free Estimates •Licensed •Insured •Jeff Stone Owner 5/5/12/19/26

LAWN & GARDEN SUPPLIES Spring Needs for Lawn & Garden: Fertilizer, seeds, sprays, fungicides. Atlas of Manchester, 18875 W. Austin Road, 428-7077.

HELP WANTED

Chelsea Big Boy- All positions available. Apply in person. 475-8603. 1610 S. Main, Chelsea. 5/13 tfn

7 Drivers needed up to \$10/Hour @ Sir Olivers Pizza. Must be 18 & over with good driving record.

2 Part time people needed for Food preparation, 11 AM to 4PM daily Mon - Friday. Apply in person at Sir Olivers Pizza. 5/5

ADIA OPEN IN MANCHESTER

We have many clerical and light industrial positions available in Saline, Dexter & Manchester. Call, today for an interview.

ADIA 428-2800

Western Washtenaw County - WE WANT YOU! Variety of positions available immediately. Call Manpower 665-3757 5/10

PIZZA Help Wanted, Apply at Village Pizza 4/28/5/5

Apply Today Work Tomorrow •70 Temp-perm positions •Manchester Area •Assembly •Gen Labor 1st & 2nd Shifts Ann Arbor 994-1244 Monroe 243-5067 Intern Personnel 5/5

JOHNSON CONTROLS, INC PLASTIC CONTAINER DIVISION

Immediate opening for a full-time temporary position in the accounting department. Responsibilities include filing and data entry of customer remittances. Position requires pleasant and effective telephone skills. Qualified applicants should call 428-2249. 5/5

HIRING NOW! Boarding Kennel near Pleasant Lake needs part time Kennel help. Flexible hours. Seniors Welcome. Advancement & full time are possible. Call 475-2296 5/5

PART TIME. Previous work with Plants. Pet Food helpful, not necessary. Lifting required. Contact Atlas Stores. 517-456-6121 5/5

Help Wanted. Recruiting for Manchester area positions. Fuel Line Assembly, Cleaning Ind. Machines, Packaging Empty Plastic Bottles, General Labor, Light Industrial. Apply May 9, 10, 11 from 10-2 at H&R Block, 135 E. Main, Ste 100, Manchester. Enter on Adrian St. across from the Mill or contact Performance Personnel, 668-6933. 5/5

VEHICLES

FORD F150 XLT 88. Auto V-8, Fiberglass Cap 71,000 Miles - \$6,400. Escaper 88, Fifth Wheel, 23 foot, A/C, Microwave, Stereo - Good Condition - \$8,500. 313/428-9515 4/28-5/5

GARAGE SALE

Saturday May 7th. 9 AM - 4 PM. 11059 E. Pleasant Lake Road. 4 Families. Fencing, Dune Buggy and many more items including toys and clothing. 5/5

Friday - Saturday May 6th & 7th, 9 - 5. Baby, Household, computer equipment. 9590 Kies Road. 5/5

PLANTS FOR SALE

Impatiens, Begonias, petunias, marigolds, Dusty Miller, Alyssum, Ageratum, Pansies, Salvia and more. All annuals \$7.50 / Flat. Ferniums, Spikes, Vinca Vines, Ferns. Largest selection in Lenawee County. Buy direct from grower. Open 7 days a week 'til 8PM. Prielipp Farms Greenhouse, 7 Miles East of Tecumseh or 1 1/2 miles East of Britton on M-50 to Downing Hwy then South 1 1/2 miles to farm. 517-451-5595 4/28-5/26

FOR RENT APARTMENTS FOR RENT

Woodhill Senior Apts. Manchester. Beautiful new senior citizen apartment community is now accepting applications for immediate occupancy. Our spacious one bedroom apts. Include frost free refrigerators, window treatments, security intercom, emergency call system and private patio. Resident lounge, laundry facilities and inside mail delivery. Heat and hot water included. Residents must be at least 62 years of age, or handicapped/disabled. Rental rates start at \$282.00 per month and are based on income. For more information call 313-428-0555 or 616-942-6553. Equal Housing Opportunity. 5/5

Apartments For Rent. 2 - 2 Bedroom Apts. Norvel 1 Block from lake. Lower unit \$425 + Utilities and deposit. Upper unit large 2 bedroom with diningroom. \$450 plus utilities and deposit. No Pets. No Smokers. References. 517-423-4941 tfn

Large 1 Bedroom Apartment. With large walkin Closets. Newly decorated. Heat - Water - Sewer furnished. \$450/Month, plus security deposit. 313-428-7270. 5/

1 Bedroom Upstairs Apartment. \$280/Month- You pay utilities (313) 428-9150 tfn

MISC. FOR SALE

McCulloch Saws- Earl Alber 313-428-8707 tfn

Prielipp Farms Greenhouse Open House- Come to our 4th Annual Mother's day Open House, Fri, Sat, Sun., May 6th, 7th & 8th. Come see all the improvements and new additions for 94 at Lenawee County's largest greenhouse. Free Refreshments. Prielipp Farms Greenhouse, 1 1/2 mile East of Britton on M-50 to Downing Hwy, then south 1 1/2 mile to farm. (517) 451-5595 4/28, 5/5

3 All Steel Arch Buildings, Machinery, Grain and Hay Storage. 40X33 was \$7620 now \$4997; 40X64 was \$13,240 now \$6980; 50 X 104 was \$17,300 now \$11,840. Never erected, can deliver. 1-800-320-2340 5/5

THANK YOU

Thank You to Relatives and Friends for Cards, Flowers, Prayers and Visits while I was ill. A special thanks for Alma Arnett & to my family for their help and support. God Bless you all.. Lillian Hlavka

MISC. FOR SALE

Books - Books - Books, Cookbooks, Hardcover and Church Cookbooks \$1.00, 100's of others 25¢ each. 503 Furnace. Everyday

Coronado 150 Chest Freezer. Excellent Condition. Still have all the papers. 428-7059. \$150 or Best Offer 5/5

Moving Sale - Everything priced to sell. 9:00 till 1:00 Sat. 193654 Sanborn Rd. 5/5

Asparagus - U Pick, For Sale Now. 20225 Boetger Road, Manchester, Mich. Picking for about 6 Weeks. No picking after 8:30 PM. Call 428-9486 or 428-7409 5/5/12/19

Over 200 channels of T.V. - down, \$35 per month, Free Camcorder with purchase this week only. Call Satellite Systems 1-800-982-3474 5/5

Spring Special - Get a head start on spring! A truckload of our environmentally safe Black Peat Dumped in your garden will loosen up your soil and give you more production. Call 428-9664 - Michigan Peat Sales 3/31-5/26

Antique MG Autos (3), not running stored for 20 years. 428-9649

FREE to good home - young Female Beagle Call 428-0858

ANTIQUES

ANN ARBOR ANTIQUES MARKET - THE BRUSHER SHOW Sat - Sun, May 14/15, (2 Full Days) 8 am - 4 pm. 5055 Ann Arbor Saline Road. Exit 175 off I-94. Over 350 dealers in quality antiques and select collectibles. Admission \$4.00, 26th season. The original!! 3/17-11/6 4/28-5/26

LEGALS

Manchester Antique Mall: 35 Dealers. Open 7 days 10-5. 116 E. Main. 428-9357. tfn

Schillers Antiques, 105 Hibbard, 428-7447. Open May 7-8, 14-15, 21-22, 10 to 5. Furniture, Glassware, China, Old Windows, Art Deco, China Cabinet. 5/5/12

Dearborn West Estate Liquidators Brooklyn, MI. Complete Auction Service, "Your Place or Ours", Call Don or Marilyn Koebbe. 517-592-3911 tfn

NOTICE OF BID

The Manchester Community Schools is seeking bids for fleet insurance. The deadline for bid is Friday, May 20, 1994 at 3:00 P.M. Please contact Jan Lillie at (313) 428-9711 for further information and bid procedures.

Kirk Excavating

Sand - Gravel - Fill Dirt Basements - Driveways Licensed & Insured 428-7938 Dave Kirk 14180 Schlewisk Road Manchester

THANK YOU

The Family of Maxine Steele would like to express our heartfelt thanks and appreciation to all who visited, sent cards, flowers and said prayers during her hospitalization and recuperation at home. She was so very grateful.

We would also like to thank everyone for their expressions of kindness extended in the loss of our Wife, Mother and Grandmother. She was our Special Angel and will be greatly missed, but always in our hearts. Sincerely, Eddie Steele and Family.

Retirement is the life. A great big "Thank You" to all who have been so kind and thoughtful in sending cards, flowers and gifts on my retirement from the Post Office. Thank you Emory and Marsha for the write-up. It was a pleasant surprise.

Special thanks to our children, Donna and all the others who had a part in the surprise party for us. You really pulled one over on us. Frances & Willard Cleland

PLANTS FOR SALE

Ivy Geraniums, Impatiens & non-stop Begonia Hanging Baskets all \$8.00 ea. New Guinea & Fuchsia Bkts, \$10 ea. Thousands to choose from. All Baskets 10 inch size and excellent quality. Prielipp Farms Greenhouse, 7 miles East of Tecumseh or 1 1/2 miles East of Britton on M-50 to Downing Hwy. then South 1 1/2 miles to farm. 517-451-5595 4/28-5/26

WOW! HURRY IN NOW!

Chevy SPRING SELLATHON



\$179 A MONTH FOR 24 MONTHS*

1994 CHEVY S-10 PICKUP Includes air conditioning, rear wheel anti-lock brakes, aluminum wheels, AM/FM stereo with seek-scan, cassette and much more.



\$13,495 MSRP

1994 CHEVY CORSICA** Includes airbag, anti-lock brakes, automatic transmission, air conditioning, AM/FM stereo cassette and more. Plus now you can take advantage of our \$750 factory cash rebate.



\$9445 MSRP

1994 CHEVY CAVALIER VL COUPE*** Includes powerful 2.2 liter engine, anti-lock brakes, 3-year/36,000 mile warranty, roadside assistance and more.



\$189 A MONTH FOR 36 MONTHS**** NO DOWN PAYMENT

1994 GEO PRIZM Includes air conditioning, rear defogger, manual transmission, front and rear floor mats and more.

*\$179 monthly payment based on \$21,250 MSRP with 24 month lease. Total payments equal \$4,296.00. \$1,954 due at lease signing (includes \$200 security deposit). License, tax, title fees, insurance and optional equipment extra. See dealer for details. **\$183.71 monthly payment based on \$12,600 MSRP with 36 month lease. Total payments equals \$6,793.56. \$388.71 due at lease signing (includes \$200 security deposit). License, tax, title fees, insurance and optional equipment extra. Option to purchase for \$7,398.82 at lease end. Mileage charge of 10 per mile over 45,000 miles. Lessee responsible for excess wear and tear. Must take retail delivery from dealer stock by 5/9/94. Tax, title, license fee, insurance and optional equipment extra. See dealer for details. Manufacturer's rebate available to qualified buyers only.

\$9,445 MSRP of 1994 Cavalier VL Coupe. Must take retail delivery from dealer stock by 5/9/94. Tax, title, license fee, insurance and optional equipment extra. See dealer for details. *\$183.71 monthly payment based on \$12,600 MSRP with 36 month lease. Total payments equals \$6,793.56. \$388.71 due at lease signing (includes \$200 security deposit). License, tax, title fees, insurance and optional equipment extra. Option to purchase for \$7,398.82 at lease end. Mileage charge of 10 per mile over 45,000 miles. Lessee responsible for excess wear and tear. Must take retail delivery from dealer stock by 5/9/94. Subject to approval by GMAC. See dealer for details.

ANN ARBOR RAMPY CHEVROLET 3515 JACKSON RD. 663-3321 CHELSEA FAIST-MORROW CHEVROLET 1500 S. MAIN ST. 475-8663 BRIGHTON CHAMPION CHEVROLET 5000 W. GRAND RIVER 545-8800 CLINTON UNDERWOOD CHEVROLET 1070 W. MICHIGAN AVE. 456-4181 DEXTER FRANK GROHS CHEVROLET 7120 DEXTER-ANN ARBOR RD. 426-4677 MANCHESTER TIRB CHEVROLET 131 ADRIAN ST. 428-8212 SALINE BILL CRISPIN CHEVROLET 7112 E. MICHIGAN AVE. 429-9481 YPSILANTI JACK WEBB CHEVROLET 1180 E. MICHIGAN AVE. 481-0210 GREAT 8 CHEVY DEALERS

Club News



Brownie Troop 120 and their siblings enjoyed a field trip to Wagner Farms in Bridgewater where Walt and Deb Jercy shared their menagerie of chickens, cats, dogs, rabbits and of course, the horses. The girls had a great time learning about horses and the responsibilities involved in caring for them.

Men's Club Adopt-A-Highway Program

The Manchester Men's Club was noted picking up garbage along M-52 south of Manchester on Friday, April 29th. This is the third year that the Men's Club has done the Adopt-A-Highway project. They were assisted this year by the Boy Scouts, and about thirty people turned out for this clean-up effort. Total time was about an hour and a half, and over 35 bags of garbage were counted alongside the highway.

Congratulations to the Men's Club and the Boy Scouts, for their dedication to the community and their commitment to a cleaner environment.

Key Club Installs 1994-95 Officers

On Sunday evening, May 1, 1994, Manchester High School Key Club installed their new officers for the 1994-95 school year. The following officers were installed by out-going President, Jodi Armentrout:

Treasurer, Mary Lobbestael; Secretary, Joelle Armentrout; Vice-President, Andrea Clark; and President, Sarah Feldkamp.

The installation was followed by refreshments and fellowship.

-Joelle Armentrout, secretary

28th Amateur Canoe Race

The Manchester Recreation Task Force sponsors the River Raisin Canoe Race on May 15, 1994. The race begins at Fellows Bridge on Sharon Valley Road, and ends at the Main Street Bridge. Entry fee is \$7.50 per person, until Friday May 13 at 4:00 pm. Late Entries may register at the starting line on Sunday at 11:00 am.

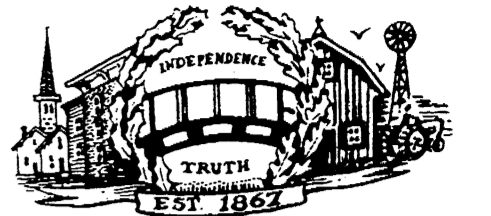
Races begin with Women's Class at 1:00 pm. Other classes are Choose Partner, Man and Woman, Adult and Child, Competition, Single and Sprint (held after the completion of all races).

Canoe rentals are available for the race from the Sharon Hollow Acres Canoe Livery. For reservations, call the Livery at 428-0100.

For further information on the Canoe Race, please contact the Community Resource Center at 428-7722 between 9-4 Monday -Friday.

Ride the Rails Special Scenic Train Rides Promenade Weekend. May 14 Tecumseh Promenade the Past Special & Shuttle Trains Departing from Hotrum May 15 Park and Evans & Chicago. For Reservations & Schedule Information Call (517) 423-7230

THE MANCHESTER ENTERPRISE



The Center of the Universe

126th Year -- No. 29

Manchester, Michigan

35¢ per copy

DPW WEEK



Members of the DPW Crew Work on a Water Main Break last week.

May 15 through May 21 is National DPW Week. The Village of Manchester is blessed with five dedicated DPW Employees: Gary Wiedmayer, Ed Townsend, Robert Ross, Louis Leeson and Todd Knepper.

They are responsible for keeping the streets passable in the winter and clean the rest of the year.

Your water and sewer systems are kept running and state of the art by these people. Few people realize the work done by these men, and fewer still acknowledge the great job they do.

So, if you see the orange Village trucks, or our DPW "men in blue", the week of May 15th, take the time to give them a "pat on the back" for a job well done. Everyone appreciates a kind word now and then!

DANGEROUS BUILDING HEARING TO BE HELD



Clean Up Has Begun at 223 Riverside Drive - for How Long?

A hearing will be held on Monday, May 16, at 7:45 p.m. regarding the "Old Day House" at 223 Riverside Drive.

The purpose of the hearing is to provide the owner with an opportunity to show cause before Council why the building should not be demolished. It has been ordered to be demolished within thirty days; but if the owner can show cause, renovation may remain a possibility.

Clean-up efforts have begun; a dumpster was brought in last week and a hired crew started hauling junk from outside the house.

The yard has been cleared and trash taken off the porch, as promised by the owner.

Since the owner has initiated clean-up, will the Village Council let this one ride, and possibly become a second "Black Sheep"? Let us hope not.



Sir Oliver's Pizza Owner Hospitalized

Chris Moyle, owner of the new Sir Oliver's Pizza on Main Street, was hospitalized after an apparent heart attack last Friday.

Chris is in intensive care at U-M hospital. Details of his condition were sketchy at press time. It is understood that an angioplasty was performed on Monday.

Despite this misfortune, the staff from his Jackson store is continuing to run the business, including hiring additional staff.

Keep Chris and his family in your thoughts during this time.



ARBOR DAY Celebration in Manchester



"A people without children would face a hopeless future; a country without trees is almost as hopeless."

- Theodore Roosevelt

It has been more than 100 years since J. Sterling Morton founded Arbor Day. His simple idea of setting aside a special day for tree planting is now more important than ever. It is in that spirit that the Village of Manchester, and the Village Tree Board, made a decision to celebrate the oft-forgotten holiday of Arbor Day.

Arbor Day is most frequently celebrated during the third week of April (and is now celebrated concurrently with Earth Day in some communities). But the National Arbor Day Foundation suggests that Arbor Day be held to coincide with the best tree-planting weather; whether that be January or February in the south, or May in the north.

Sybil Kolon, Community Forestry Consultant to the Manchester Tree Board, has assisted the Board in obtaining a grant which purchased sixteen trees to be planted in Riverbend Estates. The official Arbor Day Celebration will be held this Saturday, May 14th, at 10:00 am, to plant, with a bit of ceremony, one of the trees obtained with the grant money. Local Boy and Girl Scouts, Community Leaders, and organizations are all encouraged to attend the ceremony on Riverbend Drive. The Manchester Tree Board consists of Sybil Kolon, Consultant; Bill Kwolek, Chairman; Jack Conaway, Council Rep; Tom Kallewaard, Treasurer; Jane Cooper; Karen Hinkley; and Dave Chartrand.

The public is also invited to participate in this tree planting celebration. In order to become a "Tree City, USA", a town must fulfill certain requirements, one of which is having an annual Arbor Day celebration. Certainly Manchester is well on our way to becoming a "Tree City", and YOUR participation is an important part of the event. See you there! -MJC

Inside This Issue

Community Calendar... Page 2
Manchester Sportsman Club... Page 3
Editorial/Opinion... Page 4
Local Government... Page 5
Church News... Page 6
Announcements... Page 7
Changing of the Guard... Pages 8/9
People & Occasions... Page 10
Senior Citizens... Page 11
School Pages & Sports... Page 12/13
Classifieds... Page 14

Please do not write to this copy of THE MANCHESTER ENTERPRISE. Manchester Township Library P.O. Box 249 Manchester, MI 48159

Sir Oliver's Pizza advertisement including hours, address (138 E. Main St), phone (428-6543), and special offers like 'Pizza Special thru May 15th TWO PIZZAS' and 'LUNCH SPECIAL Salad & order of Jr. Breadsticks w/ Sauce'.