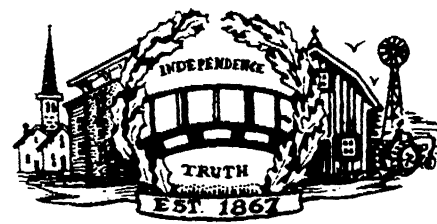


Thursday, December 2, 1993

THE MANCHESTER ENTERPRISE



The Center of the Universe

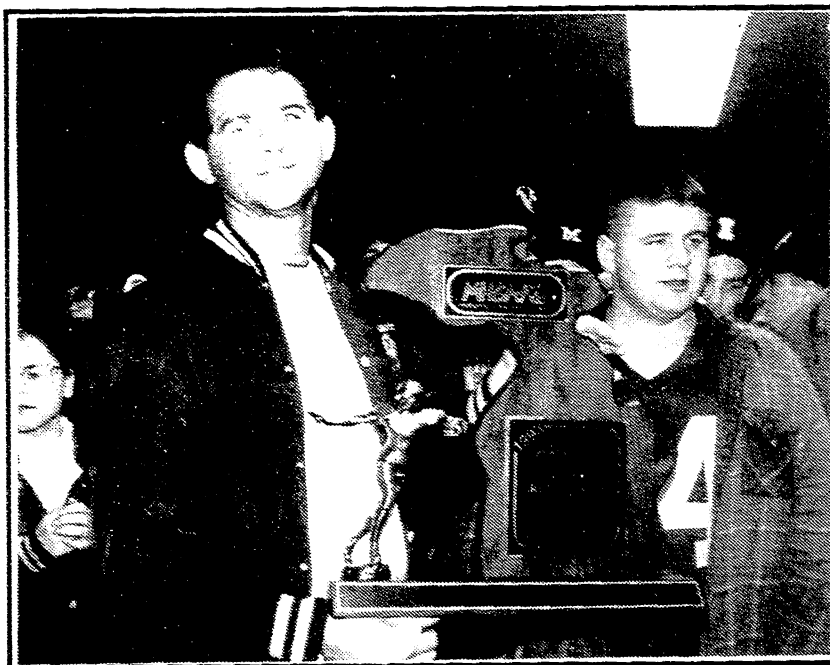
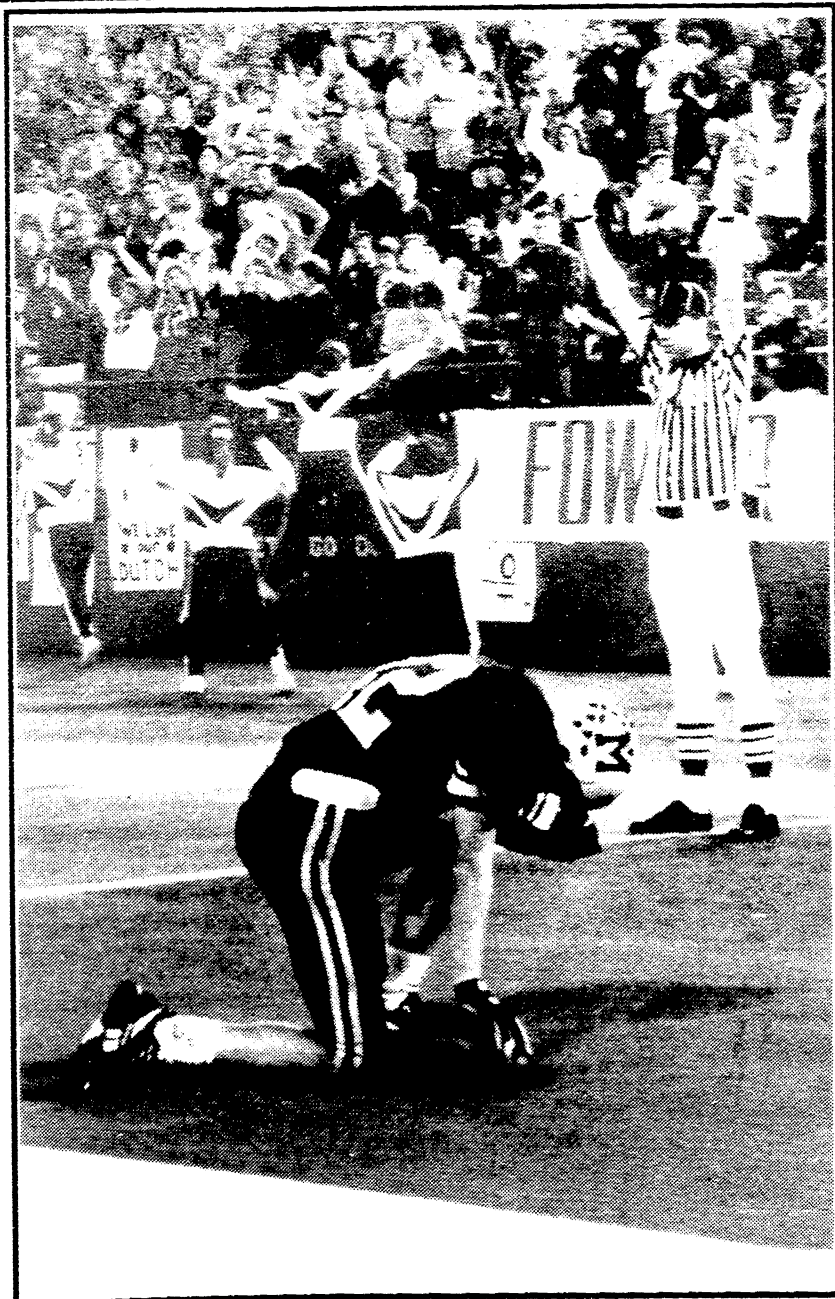
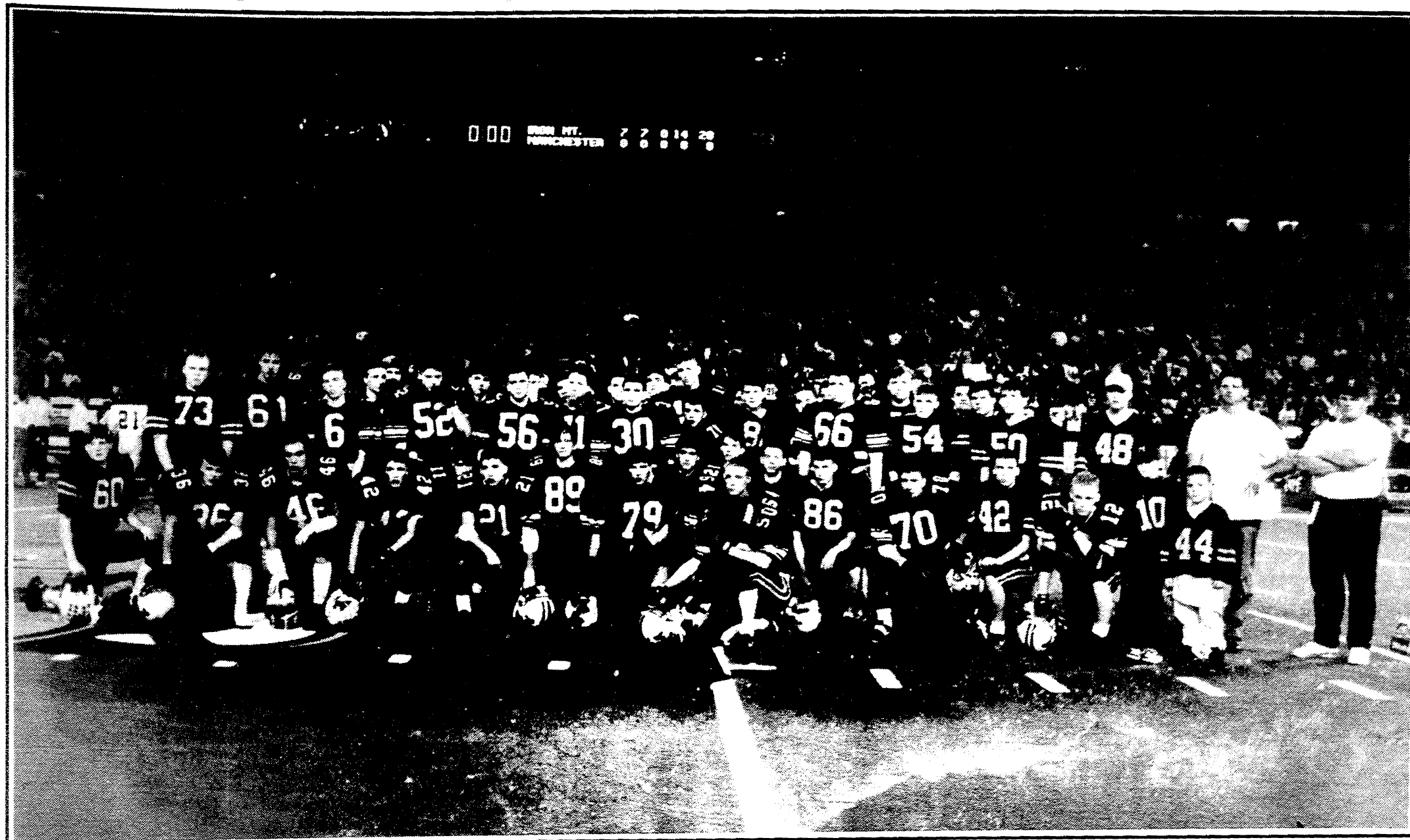
126th Year — No 6

Manchester, Michigan

35¢ per copy

BRAVO! DUTCHMEN —

We're proud of you! You took us to the Dome!



Please deliver this copy of THE MANCHESTER ENTERPRISE to—
Manchester Library
P.O. Box 135
Manchester MI 48153

Inside This Issue

From the Ground Up	Page 2
BREAKOUT	Page 3
Op/Ed Page	Page 4
Government	Page 5
School News	Pages 6/7
Church Page.....	Page 8
At the Dome with the Dutch.....	Pages 9-12
People & Occasions	Page 14
Clubs/Announcements	Pages 16/17
Classifieds	Page 18
To Your Good Health	Page 19
Briarwood	Page 20

From The Ground Up

— by BG

Last week's column described Christmas Cactus as a desirable holiday plant. A large chain store sells them as Zygo Cactus, an older name from the former family - Zygocactus. Other names for this lovely plant are Crab Cactus and Lobster Cactus, accurate in describing the form but not as poetical.

A gardener's main interest is horticultural, the growing, the maintenance, the placing, etc. of plants. It comes as a surprise the large amount of plastic that is used in the garden.

We start off with trays, flats, pots of various sizes for starting seeds or buying young plants, the styrofoam shipping pellets, even the tags for marking those plants. Then we have plastic jugs, water-filled tubes and styrofoam cones to protect the plants.

Plastic films of various kinds, black to lay down around the plants to discourage weeds, spun fabric to lay over the plants to discourage insects, landscape fabric to put under the wood chips are all used. We all have plastic trash bags. Now flowers are even planted in pouches of plastic.

A unique method of using a characteristic of plastic is to sterilize the soil by covering the top and sides of a garden bed with black plastic. Let the soil heat up in the sun for a few weeks. The high internal temperatures will destroy the weed seeds and some diseases.

We have available for use plastic watering cans, hoses and fittings, irrigation tubes, rain gauges and plastic barrels to collect the rain water from plastic eaves troughs.

Then there are carts, compost bins, lawn edging, ornaments, chairs, bird baths and feeders, fences, trellises, plastic greenhouses, lawn edging and even plastic sides for a six-inch raised bed.

Plastic is a handy tool but it does last forever. One way of recycling is to re-use as much plastic as possible. Wash last year's trays, flats and pots to be used again. Last year's plastic pot can be inverted between the pole and the bird feeder to hinder the squirrels. Can you re-use the torn trash bags to discourage the weeds?

In the garden of today there is room for both plastics and live plants, although I do have my doubts about plastic flowers.

Dial-a-Garden

Pre-recorded daily gardening tips sponsored by the Washtenaw Cooperative Extension Service, the system is in operation 24 hours a day, 7 days a week. Interested persons are invited to call 313-971-1129 at their convenience to listen to timely, up-to-date gardening information.

- Wednesday, December 1: Live Christmas trees
- Thursday, December 2: Choosing a Christmas tree
- Friday, December 3: Keep your Christmas tree fresh
- Monday, December 6: Growing cyclamen
- Tuesday, December 7: Why won't houseplants flower?
- Wednesday, December 8: Caring for Christmas plants
- Thursday, December 9: Buying a new houseplant
- Friday, December 10: Freesias

Manchester Featured on Red Cross Christmas Cards



Season's Greetings

Holiday greeting cards, offered by the Washtenaw County chapter of the American Red Cross, feature an illustration by local artist Bill Shurtliff.

The front of the cards is a drawing of our town in earlier years with the words "Season's Greetings."

Proceeds from the sale of the Christmas cards go to support the many programs and services the Red Cross provides to the community including disaster relief and blood services. The cards are sold packaged in boxes of six for \$5.50 at the Red Cross office, 2729 Packard Road in Ann Arbor from 9:00 a.m.-4:00 p.m., Monday through Friday. To order by phone, call 971-5300.

Manchester Community Schools will be putting on their holiday concert Monday, December 13, 7:30 p.m. at the high school study auditorium. All band members fifth through twelfth grade will be performing for your enjoyment. Everyone is welcome to attend.

Poinsettias \$4.50 and up
Christmas Cactus 4" and 6"
4" Crown of Thorns
Norfolk Island Pines

Schebors Greenhouse
 14345 Logan Rd Manchester, MI Phone 428-8078
 Mon-Sun 10-5

THE MANCHESTER ENTERPRISE
 109 East Main Street Manchester MI 48158 (313) 428-8173 USPS No. 327-460

The Manchester Enterprise is published each Thursday at 109 East Main St., Manchester, MI 48158, with second class postage paid at the Manchester Post Office.

POSTMASTER: Send Form 3972 to: Manchester Enterprise, P.O. Box 37, Manchester, MI 48158.

The Manchester Enterprise, Inc. Editor & Publisher
 Emory Garlick
 Associate Editor
 Kathy Kueffner
 Front Desk
 Lanetta Aldrich
 Display Ad Manager
 Debbie LaRook
 Contributing Writers
 Martha Stoner
 Karen Strook
 Angie Carlson

One-year subscriptions are \$15 within Washtenaw County, \$18 outside the county.

Deadline for display ads, photos, classifieds and news articles is Monday at 3:00 p.m.

© The Manchester Enterprise 1992. No part of this publication may be used without the written permission of the publisher.

Hours:
 Mon-Fri 5-8 pm
 Sat 9-4, Sun. 12-6

Support The Men's Club

Located on Adrian St. in Tirb's Chevrolet lot

Christmas Tree Sale
 100% of proceeds go back into the community

McLennan Landscape

A personalized professional service

- Design Consultation
- Plant Installation
- Retaining Walls
- Wild Flowers
- Finish Grading
- Rototilling
- Hydro Seeding
- Brick Pathways

(313) 428-7005

Haarer's Meeting Place
 223 E. MAIN MANCHESTER 428-9500

Something new at Haarer's!
Friday Night Buffet Party Room 6-9 p.m.
 Dinner Menu- Southern Plantation Holiday Feast
 Bountiful Selection of:
 Prime Rib • Candied Ham • Country Ham
 Salads • Vegetables • Desserts
 \$14.95
 (Closed Christmas Eve and Christmas Day)

HOURS:
 Tues - Thurs 11 a.m. - 9 p.m., Sat. 11 a.m. - 10 p.m., Sun 10 a.m. - 3 p.m.
 Closed Mondays

The MANCHESTER ENTERPRISE

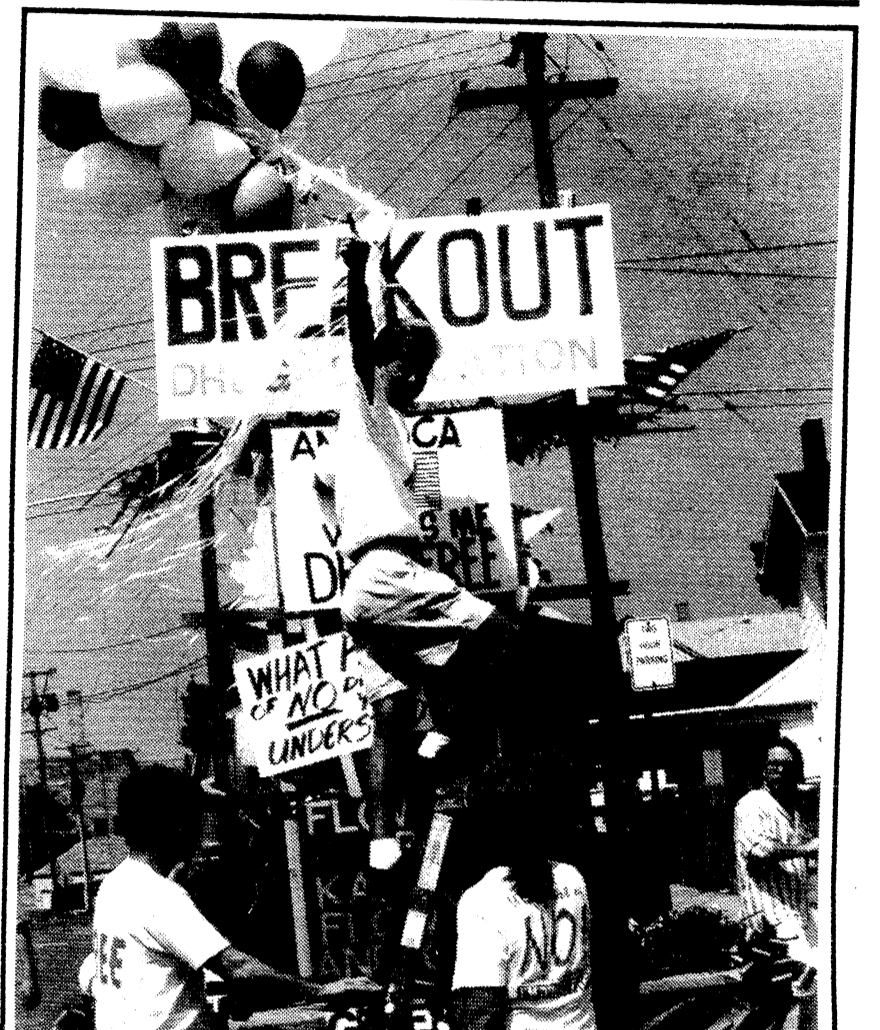
Second Front Page: B♦R♦E♦A♦K♦O♦U♦T

"It is critical that the parents and community work together to help our young people understand the risks of drug use, alcohol and newer concerns about inhalant use."
 — Manchester Community Schools November 1993 newsletter.

The Survey
 Concurrent with the recent natural "high" this community experienced with their varsity football team going to the Silverdome, results from a survey conducted by Western Michigan University, in which the Manchester Community Schools participated, were released — revealing some appalling statistics. Manchester's 8th, 10th and 12th graders exceed the national averages in their use of inhalants. (20.3% of 8th graders, 31.6% of 10th, and 19.4% of 12th); and, exceed the national averages in their use of alcohol (50.7% of 8th graders, 78.2% of 10th, 96.8% of 12th).

A significant number of the students indicated that they drank five or more drinks in a row within two weeks of completing the questionnaire. This type of drinking is defined by Western Michigan University as "frequent" or "heavy" use of alcohol. Other data revealed that only 43.2% of the 8th graders, 38.6% of the 10th and 24.2% of the 12th graders believe that there is a risk involved in "frequent" or "heavy" use of alcohol. The survey indicates that the community of Manchester has much work to do in order to reverse this trend of drug abuse.

The Program
 "Breakout" — It's a drug education program the school is holding on Thursday evening, December 9, for parents and the community; and, during the day, December 10th, in the middle and high schools. "Breakout" is produced by Cornish Productions in Battle Creek. It provides entertainment using music, a slide projector and a light show to capture the students' attention and generate excitement and interest, along with providing a realistic picture of the dangers of alcohol and drugs.



Pictured above: Breakout Drug Education coordinators: top, Shelly Milligan, president; right, John Crowley, vice-president; left, Steve Feco. Shelly graduated from Spring Arbor College in 1991 with a major in social work specializing in drug education and family science. She is a recovering alcoholic who has dedicated her career and life to helping adolescents understand and work through the issues of substance abuse in the family, school, community and their own lives.

Change will take a concerted effort by every facet of our community: parents, students, neighbors, business, church, school and agencies.
 — Manchester Community Schools November 1993 newsletter

- The Parent/Community Program on Thursday evening will include:
- Effective Communication with children;
 - Indications of high risk behavior and detecting signs of alcohol and drug abuse;
 - How adults can play a role in the prevention of alcohol and drug use.

THURSDAY DECEMBER 9 for adults
 More information in next week's issue of **The Enterprise**

The most significant data in the survey indicates that during their lifetimes, Manchester's 8th, 10th and 12th graders exceed the national averages in their use of inhalants and alcohol.
 — Manchester Community Schools November 1993 newsletter

From the Heart

by Ken Moull-3rd in a Series

Well folks, This week I am going to try and explain some of the purchase and finance programs offered by Ford. Hopefully I can give you a better understanding of your options. One program is the first time buyers program. This is available to people with limited credit history who have never had a vehicle loan before. Many people think it applies to their first Ford vehicle. This is not true, it means your first vehicle loan period. You will generally need at least one year on your job. Any previous loans regardless of new or used will disqualify you as a "First Time Buyer" through Ford's program. This financing is only available through Ford Credit but this does not mean you can't finance elsewhere. Ford also offers a cash rebate to college students earning at least a bachelor's degree through a four year college or university. This has been running from \$400-\$500. However, you can not take both the college grad and regular rebates. Probably the most confusing programs are the A, Z, and X plans. A plan is for active employees and their families. Z plan is for retired employees and families. X plan is for Ford suppliers. A and Z plans are for employees, spouses, children and all in-laws- father, mother, son, daughter and also step-children. Well, I hope this little bit of information will help answer some of your questions about financial assistance from Ford. And keep in mind throughout the year Ford offers various rebates and customer incentives for buying your vehicle. These are ever changing; however, and could vary in different regions. So check carefully with your salesman or should I say salesperson today!

Major Appliance Repair only a phone call away

Call us for reasonable rates and reliable service on all major kitchen and laundry appliances.
 313 428-8243

Now with additional staff to better serve you

ME MANCHESTER ELECTRIC
 200 Riverside Drive
 Manchester, Michigan 48110

FORD MIDWEST FORD

510 W. Main
 Manchester • 428-8343

Editorial / Opinion

Guest Editorial

— Senator Jack Welborn, 13th District, Lansing

"Putting Taxpayers Back in the Saddle"

About 75 percent of the 35 million Americans who have no health insurance are working taxpayers. They cannot afford health insurance and their employers cannot afford to buy it for them. Through taxation, however, employers and employees are both compelled to buy health insurance for their public servants.

Essentially, the problem is that taxpayers have been traveling on foot while the cost of health insurance has been riding on horseback. Nevertheless, taxpayers in other states have it easy compared to Michigan taxpayers. The extra strain for Michigan taxpayers is in buying health insurance for public school employees. In this case, taxpayers are not only behind the horse, they are being dragged by it at the end of a rope while the Michigan Education Association (MEA) applies a whip to the horse's backside.

Health insurance costs for Michigan public school employees rose 801 percent during the 1980s while health insurance for well-insured state employees increased 269 percent. The big difference is that most of Michigan's school districts are buying their health insurance through the Michigan Education Special Services Association (MESSA), which is owned by the MEA.

According to *Forbes* magazine, MESSA health insurance costs \$1,000 more per employee each year than the state's employee health insurance program. However, if school districts do not buy health insurance from MESSA, they face the probability of an MEA-led, illegal teacher strike. In Michigan, about 23 percent of the average public school district's operating costs are for employee insurance benefits.

Health insurance is a big money maker for the MEA — even though MESSA is not even a licensed insurance carrier. MESSA collects the premium money from the school districts then buys the actual insurance from Blue Cross/Blue Shield, keeping millions for itself and the MEA. The school districts do not even own the policies they are paying for, MESSA does. Between 1989 and 1992, MESSA accumulated \$87 million in surplus income, and at the end of 1992 it had reserves of \$74.7 million.

Last year alone, MESSA, which is licensed as a non-profit

company, paid \$8.2 million to the MEA's for-profit subsidiary, the Michigan Education Data Network Association (MEDNA).

In addition, MESSA pays the MEA an annual commission for coercing school districts into buying health insurance from MESSA.

According to the former director of MESSA, Benjamin Webster, the MEA "skillfully operates MESSA as an effective program to control the loyalty and support of its membership, thereby giving the Michigan Education Association the strength and financial resources it needs to successfully move its political agenda in the state of Michigan."

The MEA has contributed to a number of liberal causes, but by and large its political agenda can be summed up in four words: **MAKETAXESGO UP**. In 1989, for example, the MEA spent \$1.5 million trying to increase the state sales tax. Last fall it spent the same amount to defeat a property tax reduction proposal plus \$837,000 trying to elect friendly politicians to the Legislature.

Currently the MEA is raising money to defeat education reform and Governor Engler in his reelection bid.

The MEA's money machine, MESSA, made giant strides in the 1980s when its friend James Blanchard was Governor. In 1985, two weeks after the Michigan Association of School Boards (MASB) filed a complaint against MESSA, Blanchard appointed as State Insurance Commissioner a former MEA executive director and CEO of MESSA. The appointee, Herman Coleman, denied MASB's request for an investigation of MESSA. The year that Coleman was appointed Insurance Commissioner is the same year that MESSA entered into a secret, sweetheart agreement with Blue Cross.

Even school districts who would be willing to risk an illegal teacher strike in order to control health care costs through competitive bidding are stymied by the MESSA/Blue Cross alliance — because neither entity will release the claims information that a competing insurance firm would need in order to make a reasonable bid.

In the words of MESSA's own attorneys, "MESSA and Blue Cross have gone to substantial lengths to preserve the confidentiality of their trade secrets ... Public disclosure of the trade secrets is not necessary and will not serve the public interest."

Now that Governor Blanchard is gone and the MEA no longer owns the State Insurance Commissioner, MESSA has, indeed, had to take substantial action to protect its secrets. Several weeks ago MESSA persuaded a judge to silence an Insurance Bureau review of its activities. It got a temporary restraining order from Judge Giddings forbidding the Insurance Bureau from releasing any information it may find out about MESSA.

The "gag" order on the Insurance Bureau is still in effect. However, I have been appointed chair of a newly created Senate subcommittee to investigate

MESSA and its relationship with Blue Cross. I have introduced legislation which would require competitive bidding for school health insurance policies and require Blue Cross and/or MESSA to provide school districts with claims information. In committee I intend to open both of these non-profit giants to public scrutiny. I especially want to see a copy of the secret agreement MESSA and Blue Cross signed in 1985.

Up until now the MESSA/Blue Cross duet has had a comfortable ride. My goal is to put taxpayers back in the saddle.

The Manchester Enterprise welcomes letters to the editor, guest editorials, your comments, suggestions and opinions.

Letters must be signed and, unless special consideration is warranted, only those letters with valid signatures attached will be considered for publication.

The Enterprise reserves the right to edit letters.



We put more hours in a day for you.

For your convenience, we've given you more time to get your Holiday shopping done, with the following Special Holiday Hours at Briarwood:

- Mon., Nov. 29 through Dec. 3; 10 a.m. to 10 p.m.
- Sat., Dec. 4; 9 a.m. to 10 p.m.
- Sun., Dec. 5; 11 a.m. to 6 p.m.
- Mon., Dec. 6 through Fri., Dec. 10; 10 a.m. to 10 p.m.
- Sat., Dec. 11; 9 a.m. to 10 p.m.
- Sun., Dec. 12; 11 a.m. to 8 p.m.
- Mon., Dec. 13 through Sat., Dec. 18; 9 a.m. to 10 p.m.

Department store hours may vary.

BRIARWOOD
Better Than Ever

Hudson's, Inc. 12700 E. 13th Ave. and over 130 other great stores and services. 194 at State St., Ann Arbor, (313) 761-9550.

Freedom Township Proposed Synopsis November 9, 1993

The meeting was called to order with all board members and several citizens present.

Minutes and Treasurer's report were amended and approved with a total of \$30,817.82 in all Funds.

The audience discussed detrimental effects of gravel companies and their concerns with the Lafate Construction Co. with the Board.

Various communications requiring no board action were read and discussed.

Under old business, the Pleasant Lake Property Owners Assoc. presented for the Board's consideration a draft petition to evoke P.A. 188 of 1957 to create a special assessment district around Pleasant Lake to pay for elimination of a non-native weed. Various complaints about unlicensed cars and other junk on Elmdale Dr. were discussed. The O.E.O. has filed two misdemeanor complaints in court to help clean up these problems. The Board also authorized the Township attorney to update the dangerous building ordinance for state compliance and enforcement procedures. The D.N.R. Hunting Area Control Committee report recommended a training seminar for area patrols in enforcement of water fowl hunting statutes.

New business included a proposal from the two operating gravel companies in the township to establish an escrow account to be funded by the gravel companies and used to maintain the haul route and/or other township road projects.

Also approved was an assessing software training seminar for Little, and a letter to be sent to groups who use the townhall for free but fail to clean it properly after each meeting. The matters of the State Police contract and a foster family group home zoning application notice were tabled to the next Board meeting.

Bills #3762 through #3784, were approved for payment.

The meeting was adjourned at 10:15 p.m.

Submitted By: Julie Schaible, Clerk

Approved By: Robert Little, Supervisor

NOTICE OF PUBLIC HEARING Manchester Village Council December 6, 1993 7:45 P.M.

Notice is hereby given that the Manchester Village Council will hold a public hearing on Monday, December 6, 1993 at 7:45 p.m. at the Village Hall, 120 S. Clinton St., Manchester, Michigan for the purpose of determining whether or not to establish an Industrial Development District on property located in the Industrial Park as requested by Johnson Controls.

NOTICE OF PUBLIC HEARING Manchester Village Council December 6, 1993 8:00 P.M.

Notice is hereby given that the Manchester Village Council will hold a public hearing on Monday, December 6, 1993 at 8:00 p.m. at the Village Hall, 120 S. Clinton St., Manchester, Michigan for the purpose of reviewing the application for industrial facilities exemption certificate for Johnson Controls.

The purpose of the public hearing is to hear public comment on the application prior to the Village Council resolution of approval or disapproval.

If you wish to comment on the application but are not able to attend the hearing, you may send written comments to Karen Tucker, Village Clerk, Village of Manchester, 120 S. Clinton St., Manchester, Michigan 48158, or deliver written comments to the Village Offices, no later than 4:00 p.m. on Monday, December 6, 1993.

Karen Tucker, Village Clerk

Notice of Public Hearing Cable Television Rate Review December 6, 1993 8:30 P.M.

Notice is hereby given that the Village of Manchester will hold a public hearing on Monday, December 6, 1993 at 8:30 p.m. for the purpose of reviewing the rate schedule, of which one copy has been received, from Clear Cablevision. The schedule of rates is available in the Village Hall at 120 S. Clinton Street, Manchester, Michigan for interested parties.

If you are unable to attend the public hearing and wish to comment on the rate schedule, you may send written comments to Karen Tucker, Village Clerk, 120 S. Clinton St., Manchester, Michigan 48158, or deliver them to the Village Hall, no later than 4:00 p.m., Monday, December 6, 1993.

Substitute School Bus Drivers Needed Apply at Manchester Schools Transportation Department between 9am-12 noon 428-7320

1st Annual Big Buck Contest at Westside Automotive Win... FREE TIRES!!! Up to \$300.00

- ✓ BUY MINIMUM OF 2 TIRES between now and Dec. 31, 1993
- ✓ Bring hunting license to: WESTSIDE AUTOMOTIVE and REGISTER TO WIN BIG BUCK CONTEST

Contest will start again in '94. Any tires purchased in '94 will be eligible for Annual Big Buck Contest in '94.

✓ We now have Aluminized Exhaust! It will last twice as long as regular steel exhaust.

WESTSIDE AUTOMOTIVE
660 W. Main • Manchester
313-428-9455

FUND RAISING
Manchester Sportsman Club
8501 Grossman Rd.
Friday 6:45 p.m.

Manchester American Legion
203 South Adrian
Saturday, 7:00 p.m.

Agenda Manchester Village Council Monday, December 6, 1993 7:00 p.m.

1. Call meeting to order
 2. Pledge of Allegiance to the Flag
 3. Minutes of previous meeting
 4. Approval of Agenda
 5. Correspondence
 6. Public Participation
 7. Treasurer's Report
 8. Accounts Payable
- Public Hearings**
- 7:45 p.m. Industrial Development District
 - 8:00 p.m. Johnson Controls IFT Application
 - 8:30 p.m. Cable TV Rate Review
9. Reports
 - a. Sheriff's Report
 - b. Planning Commission
 - c. Solid Waste & Recycling
 - d. DPW Report
 - e. Ordinance Committee - Site Plan Review Change
 - f. Parks Commission
 - g. Finance Committee
 - h. Village Hall Maintenance
 - i. Manager's Report
 - j. Tree Board
 10. Old Business
 - a. Audit Report
 - b. Other
 11. New Business
 - a. Johnson Controls Site Plan Review
 - b. FCC Form 393 - Cable television rate regulation
 - c. Other
 12. Adjourn

FREE LAY-AWAY ★ FREE DELIVERY ★ FREE SET-UP

Tempenny's

GET UP TO \$5000 INSTANT CREDIT*

*WITH APPROVED CREDIT

OAK AND CHERRY FURNITURE

112 E. Mich. Ave., Clinton • 456-7445
Mon. & Fri. 10 a.m.-9 p.m.; Tues., Wed., Thurs., Sat. 10-6; Sunday Noon-5

IT'S Christmas TIME

Donate a New toy valued at \$10 or more and receive a free installation of Basic Deluxe Cable and any 1 premium service.

CLEAR CABLEVISION
1-800-684-4600

Offer expires 12/24/93. Restrictions do apply. Customer responsible for monthly fees and franchise fees.

SCHOOL NEWS

Nellie Ackerson Middle School First Marking Period

A Honors
8th Grade: Michael Brown, Randy Burkhardt, Patrick Chapin, Alyssa Chartrand, Lisa DuRussel, LeAnne Ellsworth, Hannah Goodrich, Jayne Haskins, Tim Hollosy, Rebekah Jackowski, Lindsay Jacob, Matt Laskowski, Herbert Mahony, Jennifer Manwaring, Hydy Paige, Bryan Piendel, Ben Pietrowski, Michelle Roos, Justin Turk, Jill Weidmayer
7th Grade: Chris Ahrens, Brandon Brawn, Erika Komow, Alexis Panches

6th Grade: Christina Abbott, Lauren Adler, Brandy Aiken, Kari Binder, Tracy Brooks, Laura Chapin, Sara Cooper, Amanda Coutts, Kyle Davis, Peter Detling, Jason Flint, Nicholas Gordon, Kyle Harris, Daniel Johnson, Matthew Jones, Philip Krall, Emily Parr, Jessica Randall, Amber Reed, Kevin Sahakian, Joe Shurtliff, Katherine Sondeen, Ellen Super, Erin Wiley, Ryan Witcher

High School Journalism Contest

High school journalists from throughout the state are invited to enter the 1993-94 High School Journalism Contest, sponsored by Michigan Press Women (MPW).

The Michigan contest is open to all Michigan high school students who have had their work printed in a newspaper, school newspaper, yearbook or other publication between January 16, 1993 and January 15, 1994.

This year's categories are: Editorials, Features, Sports, Columns, Feature Photography, Cartooning, and Graphics/Page Layout. First, second and third place certificates will be awarded in each category and Michigan's first place winners will be entered in the National Federation of Press Women (NFPW) Journalism Contest.

5th Grade: Audrey Bennett, David DuRussel, Steven Handley, Emily Hughes, Rachel Jefferson, Andrew Jones, Tristan Kladzyk, Christopher Lutz, Taryn Meyer, Jonathan Miller, Martin Muntz, Sherilyn Nestor, Kevin Nickert, Jacqueline Palma, Ashleigh Sewell, Derrick Smith, Kristen Taddonio, Michael Young

8th Grade: Kelly Acree, Jennifer Aiken, Jennette Branch, Rebekah Butterfield, Angela Cooper, Adam Corwin, Anthony Craig, Nicholas Davis, Hal DeLongchamp, Michael Dicks, Deon Dwyer, Michael Eversole,

The 1993-94 rules and entry blank are being mailed to all Michigan newspapers and high schools. (We have a copy at The Enterprise). Michigan contest entries must include a completed entry blank and be postmarked by January 17, 1994.

MPW will honor Michigan's winners at a youth awards luncheon at Cranbrook in Bloomfield Hills in February, 1994. MPW will also assist any student winning first place in the national competition in attending the NFPW Awards Luncheon in Las Vegas in June, 1994.

For more information, contact Julie Brown, Director, MPW High School Journalist Contest, 42090 Schoolcraft, Plymouth, MI 48170. Phone 313-953-2126 or 313-420-3378.

Jodi Feldkamp, Bryon Fent, Noah Gordon, Sarah Gould, Meghan Greenwald, Marie Haussler, Jon Hochstetler, Lindsay Hosmer, Tim Hough, Nichole Jensen, Jane Kallewaard, Carmen Kapa, Chris Kemner, Jacob Klein, Lindsay Kloster, Nicholas Kozar, Cameron Lehr, Ryan Lentz, Melody Liebeck, Cathy Lobbestael, Jenny Mann, Dana McCalla, Mike Meranuck, Katrina Montgomery, Shane Neigebauer, Nicholas Niehaus, Jacob Page, Kelly Parr, Katie Roberts, Stefanie Schulz, Dawn Shaw, Keenan Shurtliff, Roberta Silkworth, Tracey Staples, Chrystal Tadjajewski, Stacey Turner, Eric VanBogelen, Elesa Walakonis, Ryan Weir

7th Grade: Michelle Alber, Lori Anderson, Michelle Barker, Mary Barrett, Decon Bisard, Demie Brady, Eli Bragg, Jason Brinkman, Jesse Collins, Robert Depp, Jodi Donnellon, Levi Earhart, Stanley Ernst, James Fuerstnau, Danielle Funk, Amy Gall, Elise Geyer, Ben Grenier, Laura Hausauser, Nicole Hlavka, Jolene Hochstetler, Melissa Hoefl, Brian Hough, Andrew Hughes, Ruth Jackowski, Sarah Jefferson, Laura Kanta, Meghan Kennedy, Denise Koffman, Peter Kormendi, Angie Makielski, Brian Mazur, Andrew Meyer, Matthew Neator, Dana Noggle, Kreg Norgaard, Alicia Novess, Sarah Page, Cheryl Pfau, Amanda Pierson, Julie Porter, Ted Roberts, Jacob Robinson, Amy Saunders, Peter Schulte, Patrick Schulz, William Sodi, Emily Tucker, Jessica Weber, Tina Wenk, Nolan Westcott, Matt Wheeler, Courtney Whitaker, Megan Wilson, Sarah Wojtas, Paula Young, Ahja Zang

6th Grade: Brandon Baier, Chris Benedict, Tyler Breilein, Lisa Burmeister, Danielle Croghan, Diana Dillon, Patrick DuRussel, Joanne Eversole, Rachel Fleck, Erin Fox, Jennifer Gray, Derick Hanewald, David Herman, Ann Hinkley, Mark Hollosy, Erin Kane, Steven Liebeck, Katherine Okey, Nicholas Pieske, Donald Potter, Nick Puscas, Jason Schaible, Daniel Schneider, Elizabeth Sodi, Meghan Staffedl, Ginger Taylor, Jeremiah Tobias, Angela Tyler, Rachel Vanover, Jordan Wahl, Richard Walakonis, Aaron Wallace, Meghann Way

5th Grade: Leigh Aiuto, Elizabeth Bauer, Justin Brady, David Canter, Roni Clay, Aaron Clemons, Jamie Coopriider, Amber Cullip, Kaylin Davis, Joe Donnellon, Heidi Ernst, Devin Golka, Holly Horodeczny, Kathryn Horodeczny, Michael Kennedy, Justin Knouase, Brandon Lentz, Nicole Leverett, Jessica Lindemann, Sarah Luckhardt, Elizabeth Mester, Laura Meyer, Ashley Munoz, Sherry Perkins, Rachel Pfauz, Amy Preston, Matt Raymond, Andrew Roberts, William Robertz, Sam Robinson, John Schneider, Charrissa Silkworth, William Slocum, Jack Smail, Holly Sutton, Kevin Turk, Aaron Wacker, Evan Wahl, Eric Walter, Mindy Weir, Owen Whitman, Kristen Witcher

Middle School Book Fair

The school Book Fair will be at Nellie Ackerson Middle School from December 9th through December 14. Parents are invited to browse and buy on Saturday, December 11 from 9-11:00 a.m. The Book Fair is an important fundraiser that provides money and/or books for our school. We appreciate your support. Thank you.

Caring Program for Children

A Blue Cross and Blue Shield of Michigan health care program for children, sponsored by the Michigan Health Care Education and Research Foundation, in partnership with the State of Michigan Department of Social Services and the Federal Health Care Financing Administration.

The Caring Program for Children provides free preventive health care coverage to eligible uninsured Michigan children primarily through donations. Children are enrolled as funds become available. Inpatient hospitalization is not included.

Eligibility Requirements for the Caring Program

- 1. The child must be an unmarried son or daughter, step-child, legally adopted or otherwise under your full-time care and living with you. College students living away from home may be eligible. Children under age 19 living independently from their parents also may apply and should contact the program for further instructions.
2. The child must be a resident of Michigan.
3. The child must be under 19 years of age.
4. The child cannot be eligible for any other private insurance (including co-pay through employer, etc.) or government-sponsored health insurance, including Medicaid or Medicare.*

Family Size Caring Program 1993 Income Maximum

Table with 2 columns: Number of children, Income Maximum. Rows: 2 (\$17,445), 3 (21,996), 4 (26,547), 5 (31,098), 6 (35,649), 7 (40,200), 8 (44,751), 9 (49,302), 10 (53,853)

* Please note: If you have a child currently receiving services through the Children's Special Health Care Services (CSHCS) Program, he or she may still be eligible for the Caring Program for Children. Caring Program benefits would supplement those of the CSHCS Program.

Applications are available at Manchester Community Schools, Central Administration Office, 710 East Main Street, Manchester, MI 48158

Benedict's Service

The only FULL service gas station in town. 327 W. Main St. • Manchester 428-8576

NOW! Better for you and better for our community! Our new Reclaim and Recycle machine for both anti-freeze and R12 will dispose of all fluids safely.

December Special Lube, Oil, Filter, 4 tire rotation \$26.00

We also offer full service on: rotors and drums • brakes • exhaust • shocks & struts • tune ups • front end alignments • radiators • tires • tie rod ends • CV shafts • batteries • transmissions • we turn rotors and drums

Monday-Friday 7 a.m. - 7 p.m. Saturday 8 a.m. - 5 p.m. Sunday - Closed

Kormendi Math Finalist

Andre Kormendi, a sophomore at Manchester High School and the son of Paula Kormendi, has learned that he has qualified for the second part of the 37th annual Michigan Mathematics Prize Competition sponsored by the Michigan Section of the Mathematical Association of America.

Students qualified for Part II by placing among the top 5% out of about 17,500 participants in an examination given at 400 schools across the state of Michigan last October 13.

The qualifiers will compete by taking the Part II exam this December 8. The 100 students with the highest combined scores will be invited to a banquet in their honor at Lawrence Technological University next February 26 and approximately the top 50 will receive college scholarships ranging in value from around \$400 to \$2,200.

Eighth Grade Basketball

The Manchester eighth grade boys' basketball team opened their season this past week with two victories.

On Tuesday they traveled to East Jackson and won 29-25. The scoring broke down as follows: Nick Davis-14, Nick Niehaus-6, Eric Flint-5, Justin Whitaker and Justin Turk-each scored 2.

On Wednesday, they defeated Addison 37-34. The scoring attack was led by Nick Davis with 16, followed by Nick Niehaus with 9, Eric Flint with 5, Justin Turk with 4 and Mike Meranek with 3.

Wiethoff Receives Scholarship

Matthew Wiethoff, a 1993 graduate of Manchester High School, is the recipient of a Presidential Scholarship from Adrian College, awarded in recognition of excellent academic ability demonstrated at the high school level. To qualify, an incoming student must receive a 3.60 grade point average (on a 4.0 scale) in college preparatory classes.

SCHOOL LUNCH MENU

- Monday, December 6: Chicken Patty/Bun, Hash Brown Patty, Dill Pickles, Peach Half, Milk
Tuesday, December 7: Boneless Rib-B-Q, Bagelette & Butter, Scalloped Potatoes, Sliced Carrots, Fruit Cocktail, Milk
Wednesday, December 8: Deli-Turkey Sandwich, Baked Beans, Carrot Sticks, Pudding, Milk
Thursday, December 9: Crispy Fish Filet with Dinner Roll/Butter, Oven Brown Potatoes, Green Peas, Ice Juicee, Milk
Friday, December 10: Nacho Supreme, Cheese/Salsa/Sour Cream, Corn, Fresh Fruit, Milk



Melissa Luckhardt was the winner of the turkey from the third and fourth grades and Clint McCalla was the winner of the turkey from the first and second grades. The turkeys were donated by Walco Foods.

Turkey Winners Announced

The week of November 15-19, students at Klager School participated in the one mile Turkey Trot. The Turkey Trot emphasizes lifetime fitness skills, such as walking and jogging, as a means of maintaining healthy physical fitness levels.

All students who participated in the Turkey Trot and finished the mile, had their names put into a drawing to win a turkey from Walco Foods for Thanksgiving. The winners of the two drawings were Melissa Luckhardt and Clint McCalla.

The staff and students at Klager Elementary School would like to thank Walco Foods for donating the turkeys for the Turkey Trot!

Save Those Labels!

It's Campbell Soup time again. Manchester Middle School is collecting labels to be exchanged for audio-visual equipment. The collection period ends on March 1, 1994.

Please save labels from all Campbell soups, V-8 juices, Swanson canned and frozen foods, all Franco-American products, Recipe dog food, Mrs. Paul's frozen foods and Vlasic pickle products.

You may send the labels to any Manchester school to be forwarded to the middle school, give the labels to any middle school student, or deposit the labels at the local Walco store.

Thank you for helping us again.

"And how do you like going to school, Roger?" a kindly lady inquired of a very small lad. "Oh, I like the going all right," the boy replied, "and I like coming back, too. It's having to stay after I get there that bothers me."

NOW, THE ONLY THING EASIER THAN GETTING A HOME EQUITY LINE FROM COMERICA IS USING IT.



It could be for home improvements. Or to pay for college tuition. Just borrow against your home's equity, and receive a Comerica Home Equity Line with VISA access at only 8% APR. (Ask about our special rate on lines of \$50,000 and over.) And what little interest

8% A P R

you do pay may be tax deductible. What's more, a Comerica Home Equity Line with VISA access carries no annual fee. So just call 1-800-292-1300 to apply over the telephone, or stop by the Comerica branch nearest you. It's easy to get. But even easier to use.

Comerica Bank A better bank for you



*Consult your tax advisor regarding tax deductibility. Rates may vary quarterly. Based on the highest prime rate as published in the Midwest edition of The Wall Street Journal plus 2%. Currently the APR with a 2% margin is 8%. Maximum APR is 18%. You must carry insurance on the property that secures this account.

CHURCH NEWS

EMANUEL UNITED CHURCH OF CHRIST—Rev. Brewster Willcox, Interim Pastor, Rev. Nancy Doty, Associate Pastor; Telephone: 428-8359; 9:00 a.m. Sunday School, Worship 10:30 a.m., 11:30 a.m. Coffee & Fellowship
MANCHESTER UNITED METHODIST CHURCH—Rev. Marsha Woolley, Pastor; 501 Ann Arbor St., Manchester, Telephone: Parsonage 428-8013, Church 428-8495. Sunday School 9:00 a.m., Worship 10:30 a.m., Coffee & Fellowship 11:30 a.m. Church office hours—Tuesday, Wednesday and Thursday 8:00 a.m. until 11:00 a.m.
ST. MARY'S CATHOLIC CHURCH—Rev. Francis J. Murray, Pastor; Telephone 428-8811; Masses: Monday thru Wednesday, Friday 8:30 a.m., Thursday 7:00 p.m., Saturday 5:00 p.m., Sunday 8:30 a.m. and 10:30 a.m.
FAITH COMMUNITY CHURCH—Scott Engelman, Pastor, 8400 Sharon Hollow Rd. off W. Austin; Telephone 428-8709; Worship Service 10:00 a.m.; Sunday School 11:30 a.m., Sunday Evening Service 6:00 p.m.; LIFELINE 7:30 p.m.
VICTORY BAPTIST CHURCH—Rev. R. Dean Cooper, Pastor; 423 South Macomb, 428-7506, Sunday School 10:00 a.m.; Morning Worship 11:00 a.m.; Evening Public Bible Class 6:00 p.m.; Wednesday Praise and Prayer 7:00 p.m.
BETHEL UNITED CHURCH OF CHRIST—Rev. Roman A. Reineck, Pastor; 10425 Bethel Church Road at Schneider Rd.; Phones: Parsonage & Church 428-8000/429-7175; Church Service 9:30 a.m.; Sunday School 10:45 a.m.
SHARON UNITED METHODIST CHURCH—Rev. Peggy Paige, Pastor, Corner of M-52 and Pleasant Lake Roads; Telephone 428-7714; Worship 11:00 a.m. Phone 428-8430
ST. JOHN'S LUTHERAN CHURCH—Rev. Dennis A. Falk, Pastor; Austin Road, Bridgewater; Telephone 429-7434; Sunday School 9:15 a.m.; Worship 10:30.
NORTHSHARON BAPTIST CHURCH—Bill Winiger, Pastor; Clifford W. J. Whitenburg, Assistant Pastor, Sylvan and Washburn Roads; Telephone 428-7222; Sunday School 10:00 a.m.; Morning Church 11:00 a.m.; Evening Church 7:00 p.m.; Wednesday Bible Study 7:00 p.m.; Youth Meetings 7:00 p.m.
IRON CREEK COMMUNITY CHURCH—Tom Butterfield, Pastor; English and Sharon Hollow Roads; Sunday School 10:00 a.m.; Morning Church 11:00 a.m.; Sunday Evening 7:00 p.m.
ZION LUTHERAN CHURCH—Rev. Mark A. Weirauch; 3050 S Fletcher Road; Telephone: Pastor 475-3481, Church Office 475-8064, Susan Wiley, Secretary 428-7268. Sunday School 9am; Worship 10:15am
ST. THOMAS LUTHERAN CHURCH—10001 W. Ellsworth Rd., (5 miles North and 6-1/2 East of Manchester); Telephone 663-7511; Schedule: Church Service 10:45 Sunday - Bible Class and Sunday School 9:30 a.m.
ST. JOHN'S UNITED CHURCH OF CHRIST—Rev. Nancy Doty, Pastor; 12376 Waters Road, Waters and Fletcher Roads, Rogers Corners; ; Worship and Sunday School 9:00 a.m.
CLINTON-ANCHASER ASSEMBLY OF GOD—Rev. Richard Coury, Pastor; 13300 Clinton-Manchester Road, Clinton; Phone 517-456-7510; Sunday School 9:30 a.m.; Worship 10:45 a.m.; Sunday Evening 6:30 p.m.; Wednesday Prayer, Bible Study, Youth 7:00 p.m.
CHURCH OF JESUS CHRIST OF LATTER DAY SAINTS (MORMONS)—Samuel M. Skidmore, Branch President; 1330 Freer Road, Chelsea; Sacramento 9:30 a.m.; Sunday School, Primary 10:40 a.m.; Priesthood Relief Society, Aaronic Priesthood, Youth 11:40 a.m. For more information call 517-456-7876/313-475-1778
CHELSEA FULL GOSPEL CHURCH — John and Sarah Groesser, Pastors; 11452 Jackson Road (Lima Town Hall) 313-475-7379; Sunday 10:15 a.m. Prayer, 11:00 Morning Worship Service, 6:00 Evening Worship Service; Wednesday 7:00 p.m. Church School, all ages (call for location)
UNITY CHURCH OF JACKSON—3385 Miles Road, Ackerson Lake, Jackson, MI, 517-764-6900; 11:00 a.m. Sunday Services and Sunday School.
COMMUNITY BIBLE CHURCH — Pastor Jody Riethmiller, meets at the Manchester Middle School in Manchester; Worship 10:00 a.m., Sunday School following, Evening Service 6:00 p.m.
NEW LIFE CHRISTIAN CENTER — 50 Freer Rd. (Covenant Church); Pastors Erik & Mary Nansen; Sunday 12:30 p.m. Praise, worship, Children's Church, 6 p.m. In-home meetings; 1st Monday of the month 7 p.m. Women of Faith meet in homes, every Thursday 7 p.m. Praise and prayer.

EMANUEL UNITED CHURCH OF CHRIST
Wednesday, December 1: 6pm Bell Choir, 7:30pm Adult Choir
Thursday, December 2: 12 noon Senior Meal, 3:30 Cherub Choir, 3:50 Children's Choir, 6pm Cub Scouts, 6:30 Brownies, Basket Making Group, Women of Emanuel Christmas Potluck
Saturday, December 4: 9am Set-up Live Nativity Scene
Sunday, December 5: 9am Sunday School, 10:30am Worship, Communion, 11:30 Fellowship Time, Advent Workshop (in gym, lunch & crafts) then to Sanctuary to decorate tree.
Monday, December 6: 5:30pm Weight Watchers, 6pm Sorority, F.H.
Tuesday, December 7: 12 Noon Senior Meal, 6:30pm Daisies, 7pm Boy Scouts
Wednesday, December 8: 6pm Bell Choir, 6:30 Daisies, 7:30 Adult Choir

ST. MARY CATHOLIC CHURCH
Wednesday, December 1: Mission Mass 8:30am, MISSION Service 7:30pm
Thursday, December 2: Mission Mass 8:30 am, Mission Service 7:30pm
Friday, December 3: Adult Chor Rehearsal 7-9pm
Saturday, December 4: Children's Choir Rehearsal 3:30-4:45pm
Sunday, December 5: Adult Choir 9:30am, Preschool/Kinder-garten Rel Ed 10:30am, Sing We Now of Christmas 3pm, Rel Ed, Grades 7-12 6:30-8:30pm
Monday, December 6: Reconciliation-2nd graders and parents 7pm
Tuesday, December 7: Rel Ed-Grades 1-4, 3:15-4:15pm; Rel Ed-Grades 5&6, 3:30-4:30pm, Mass 7:00pm, Parish Pastoral council Meeting 7:45pm
Wednesday, December 8: Immaculate Conception Masses at 8:30am & 7pm

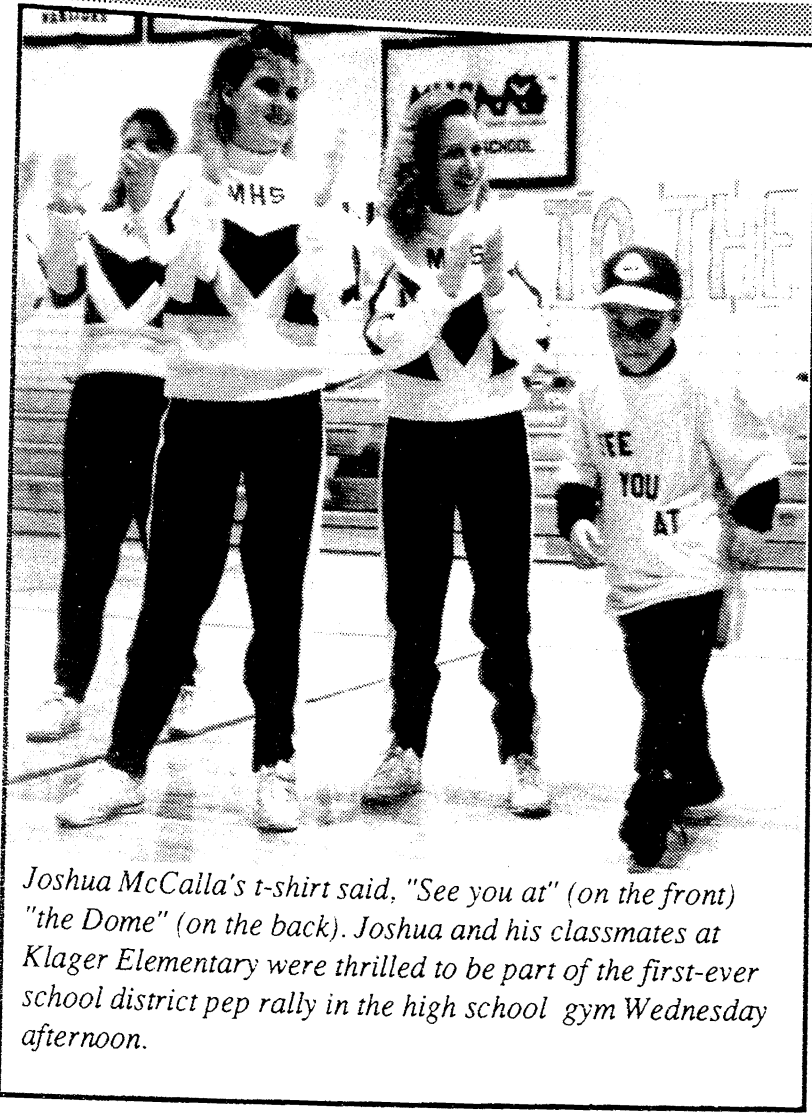
ST. THOMAS
Wednesday, December 1: 8pm Midweek Advent Worship
Saturday, December 4: 10:30am Ladies Aid Bake Sale
Sunday, December 5: 9:30am Sunday School & Bible Class, 10:45 Worship Service with Holy Communion, 12 noon Annual Budget meeting voters family potluck following
Wednesday, December 8: 8pm Midweek Advent Worship at St. John's

BETHEL UNITED CHURCH OF CHRIST
Wednesday, December 1: 12:00 Seniors of Bethel Christmas Potluck, 12:00 Women's Fellowship, 6:30 Youth Choir Plus, 7:30 Bible Discovery
Thursday, December 2: 6:15pm Children's Choir
Saturday, December 4: No Confirmation Class, 1pm Youth Decorate Chrismon Tree
Sunday, December 5: 9:30am Worship-Communion, 9:30am Second Sunday in Advent, 2pm Sr & Jr Youth Play at Power Center
Tuesday, December 7: 7:30pm Church Board meets
Wednesday, December 8: 9am January newsletter items, 6:30pm Youth Choir Plus, 7:30pm Bible Discovery
MANCHESTER UNITED METHODIST CHURCH
Wednesday, December 1: 3:15pm Children's Choir
Thursday, December 2: 6:30pm Youth Bell Choir, 7:30 Adult Bell Choir

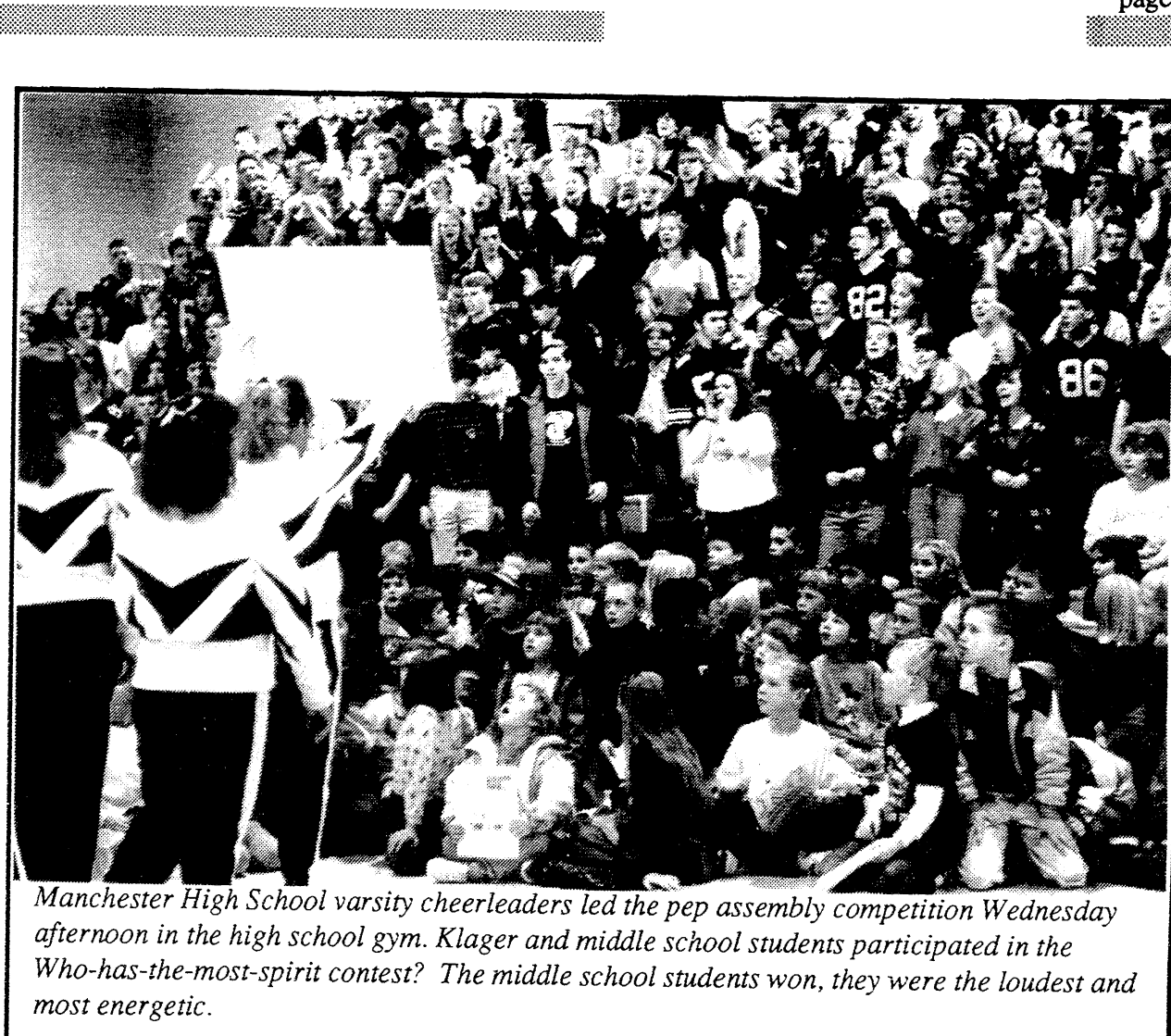
Saturday, December 4: 9am UMM Breakfast meeting
Sunday, December 5: 9am Sunday School, 10:30am Worship
Monday, December 6: 3:15pm Girl Scouts
Tuesday, December 7: 3:15pm Scouts, 7pm Finance Committee
Wednesday, December 8: 3:15pm Kids' Choir, 7:30pm Advent Bible Study
SHARON UNITED METHODIST CHURCH
Wednesday, December 1: 8:15pm Chancel Choir practice
Saturday, December 4: 9am-12 noon Shopping Spree and Art Exhibit
Sunday, December 5: 11am Holy Communion
Monday, December 6: 6-8pm Girl Scouts
Tuesday, December 7: 7:30pm Advent Bible Study at the parsonage
Wednesday, December 8: 8:15pm Chancel Choir practice

God's Palette Creates The Sparkling White Of Winter.
The autumn colors are now gone, Replaced by what will greet the dawn: A blanketing of dazzling white Which had descended overnight. It paints the trees, now bare of leaves, While icicles adorn the eaves, And ponds and rivers are embossed With beautiful designs in frost. Thermometers record the freeze With single digits of degrees. So bundle up and brave the storm; Your House of Worship will be warm, And faith has lessons that abound; Its seasons span the whole year round, To teach you what God's love is worth When winter beautifies the earth.
— Gloria Nouak
If we had no winter, the spring would not be so pleasant. — Anne Bradstreet
"By the breath of God frost is given." — Job 37:10

Table with 5 columns of church sponsors: GEORGE & MABLE MACOMBER, DAN'S WESTSIDE AUTOMOTIVE, MANCHESTER MEN'S CLUB, WACKER'S GENERAL STORE, Keith's Barber Shop, Pilot Metal Products, Janice & Dave Little, MANCHESTER KIWANIS, MANCHESTER CAR WASH, Manchester Automotive, Dr. Charles Lyon, D.O., ALBERS ORCHARDS, You Owe It To Yourself... To choose a quality retirement. Brooklyn Living Center, HENDLEY & DATSKO, P.C. Attorneys at Law, MANCHESTER TOOL & DIE, Manchester Plastics, Norm & Olga Walz, Canton Retirement Centers Inc., S-K Sales, Inc., Manchester Chiropractic Clinic, d-n-d design Interior/Exterior signs, Silk Screening Vinyl Lettering, Sandcarved Redwood (313)428-9693, This space available for sponsorship - please help us continue to publish your church's messages, MANCHESTER MANOR, THE MANCHESTER ENTERPRISE, GENE & GERTRUDE SMITH PINNACLE ENGINEERING, This space available for sponsorship - please help us continue to publish your church's messages



Joshua McCalla's t-shirt said, "See you at" (on the front) "the Dome" (on the back). Joshua and his classmates at Klager Elementary were thrilled to be part of the first-ever school district pep rally in the high school gym Wednesday afternoon.



Manchester High School varsity cheerleaders led the pep assembly Wednesday afternoon in the high school gym. Klager and middle school students participated in the Who-has-the-most-spirit contest? The middle school students won, they were the loudest and most energetic.

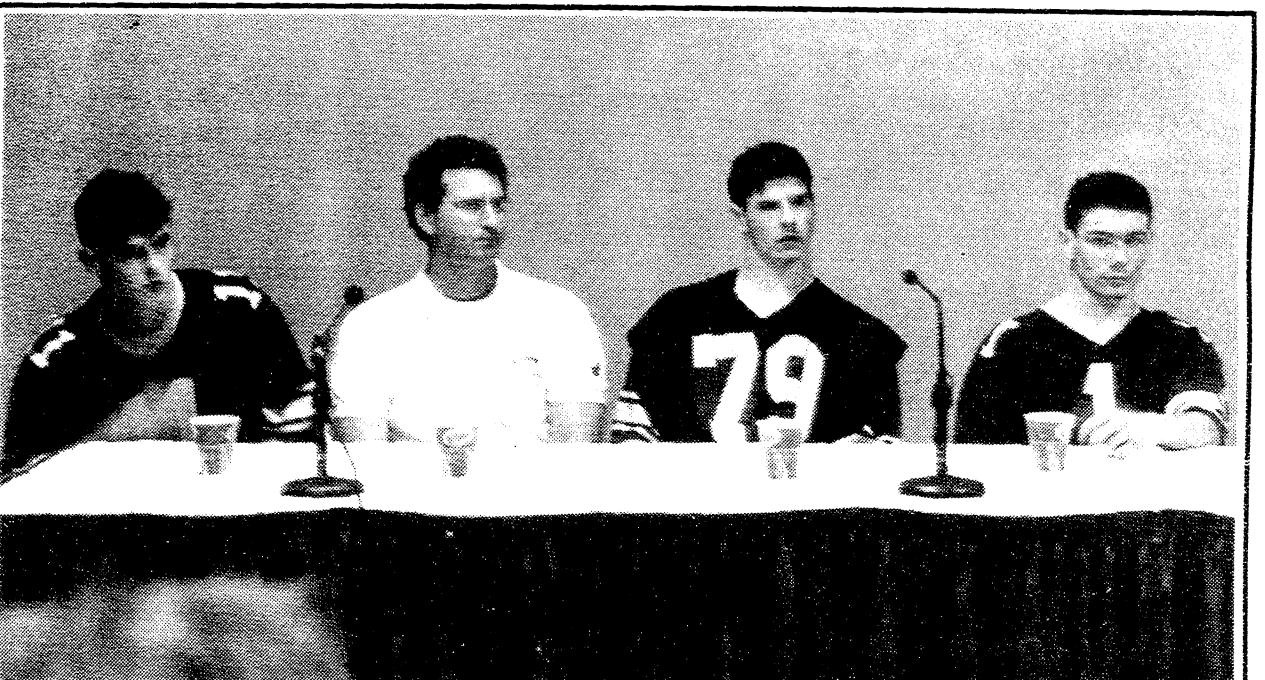
— by Karen Strock

The Manchester Flying Dutchmen finished their Dream Season at the Silverdome with a loss to the Iron Mountain Mountaineers, 28-8. They finished the season at 12 victories (8 shut outs) and 1 loss, winning more games than any previous Manchester team. Each year over the past four years the MHS teams have advanced one more step toward the State Championship. Several State Class C records were set last Friday. Tom Fielder had a record number of pass attempts (24), completions (13), and passing yardage (184). These were both individual and team records for the Championship game. Iron Mountain players tied the records for receptions (Schorman-5), PAT attempts and successes (Mortila-4 each), and team fumbles recovered (3).

FINAL WEEK
Preparations during the final week were not like any experienced by Manchester before. The team practiced on AstroTurf at UM and EMU on Tuesday and Wednesday. Thursday, before breaking for Thanksgiving with their families, an early morning workout was held on home turf. Photographers and reporters attended practices. Home-town fans made preparations for fan buses, a parade and reception for the players. A pep rally at the school featured cheering contests, lots of enthusiasm and pep talks. The Klager students' TO THE TOP poster of personally signed footballs was on display. Featured on the north wall of the gymnasium was a large banner signed by the Middle School students. The banner read "The Middle School says take us TO THE TOP." Josh McCalla, manager, wore a T-shirt which said "See You at The Dome 93."

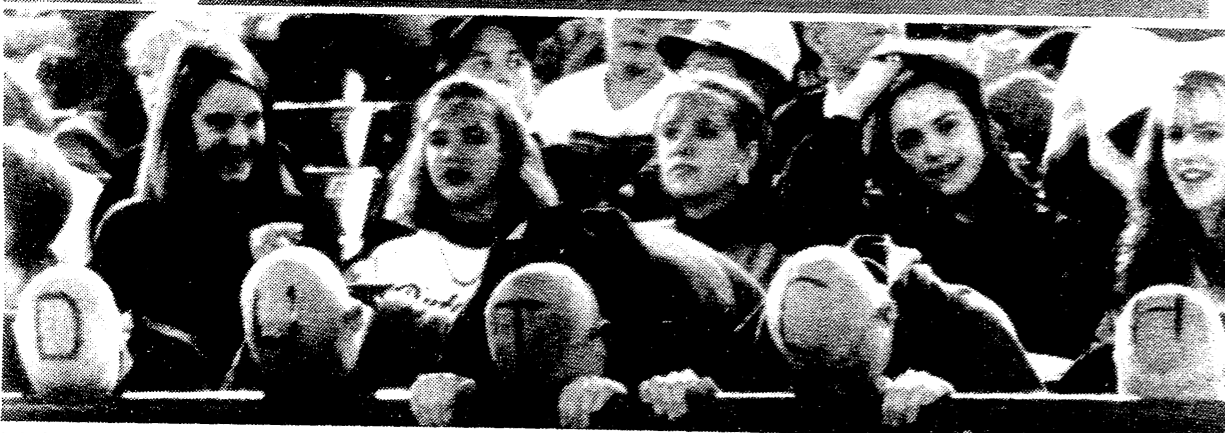
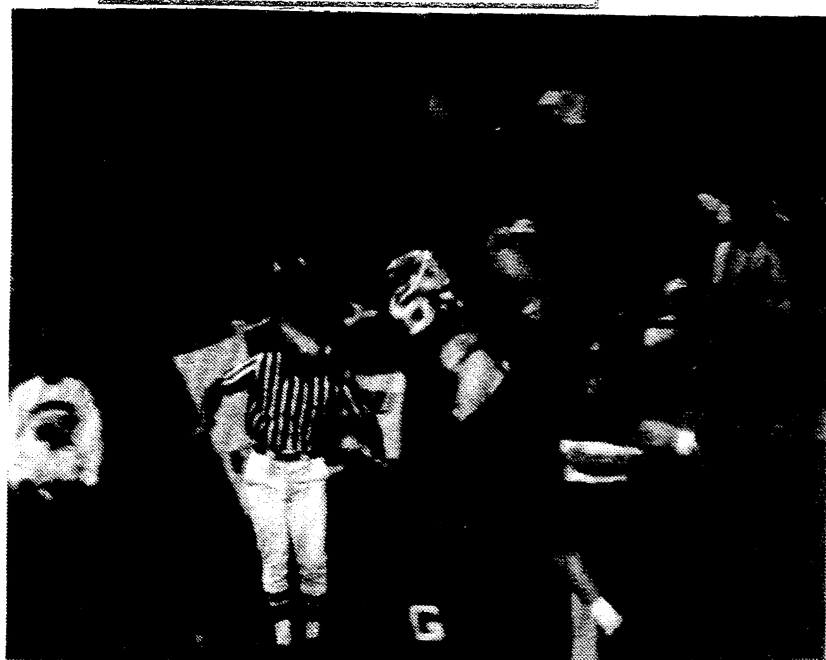
On Friday, the team left town as fans cheered them on near Klager School. As the escorted entourage made its way to I-94, cars and signs gave them a friendly send off. Anticipation of a great game ahead loomed high. Alumni of MHS returned to cheer their alma mater. Fans came from all over the USA - Texas, Missouri, Iowa, Wisconsin, Ohio, to name a few. Calls also came in from far and wide. Upon returning from the Silverdome, the team bus was escorted by police and fire vehicles around town, announcing their arrival. The American Legion was the site of a reception. Many people and businesses worked together to welcome the team. The Legion hall was full as fans anxiously awaited the team. A good feeling existed - the community was unified for their team. "WE LOVE OUR DUTCH" was the cheer. THE GAME
Iron Mountain took the opening KO at their 6 and returned to their 15. They then marched 85 yards in 17 plays, consuming 10 min. 10 sec. of the quarter, in scoring the first TD of the game. They gained 6 first downs in the drive and were aided by 20 yards in Dutch penalties. Manchester was slow to start on offense, fumbling on their first offensive play. The Mountaineers recovered at the Manchester 24. Iron Mountain, on 4th and 5 from the M-19, had a pass attempt broken up by Brandon Woods. The Dutch had the ball back! Dutch fans were electrified when Tom Fielder connected with Mike Bamard on an apparent 81 yard TD pass. A flag for illegal motion nullified the play. The Dutch then drew another blank, fumbling on the next play of their series. Iron Mountain gained possession at the Dutch 21, but the Dutch Defense stiffened. Brad Davis sacked the QB and an incomplete pass (10:30 of the 2nd quarter) gave the Dutch the ball again. The Flying Dutchmen moved from their own 16 to the IM 11 over the next five minutes. Passes to Brandon Woods (2) for 44 yards, Kevin Phelps for 9, and Brent Woods for 8, complemented running by Mica

The Flying Dutchmen received the second half KO. Puscas handed off to Bamard for an 11 yard return to the M20. The big play of this series was a reception by Phelps, who sidestepped a defender, maintained his footing, and gained 45 yards on one play. Stopped again, Shayne Ahrens punted from the IM 38, and the ball went out of bounds at the IM 13. The Mountaineers spent the next 8:23 playing ball control before scoring a third TD on the first play of the 4th quarter. This drive, according to Coach Gall, was the one that really sealed the victory for the Mountaineers. "It kinda took the wind out of our sails." Manchester lost its third fumble of the night after the next KO. Iron Mountain took just 4 plays and 2:01 on the clock to score their final TD. The teams exchanged possessions again. Andy Winzenz sacked the QB forcing a Mountaineer punt which died on the M7. With 5:36 remaining, Tom Fielder went to work. As he stated, "We did not want to get shut out. We knew we could do it." Shane Goodell was the primary runner and receiver during the Dutch scoring drive. He ran once for 21 yards and received 4 times for 49 yards. Davis also had 3 carries for 14 yards. Bamard had a 7 yard reception to keep the drive moving. In all, the Dutch moved 93 yards in 13 plays. The TD was on a 6 yard pass to Goodell. Fielder passed to Phelps for the 2 pt. conversion. With 6 seconds left, the game was in the books. The final score: Iron Mountain 28 - Manchester 8.

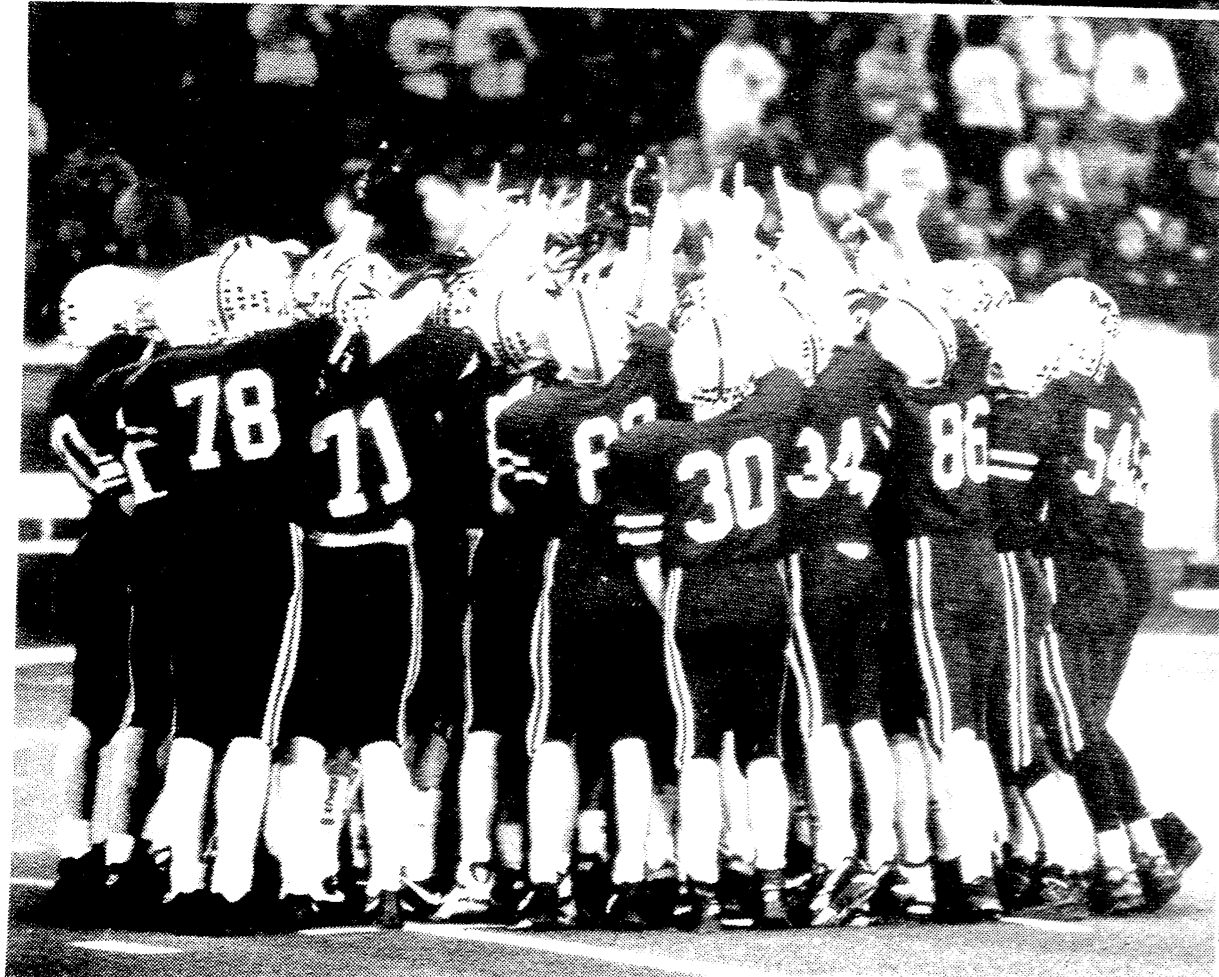
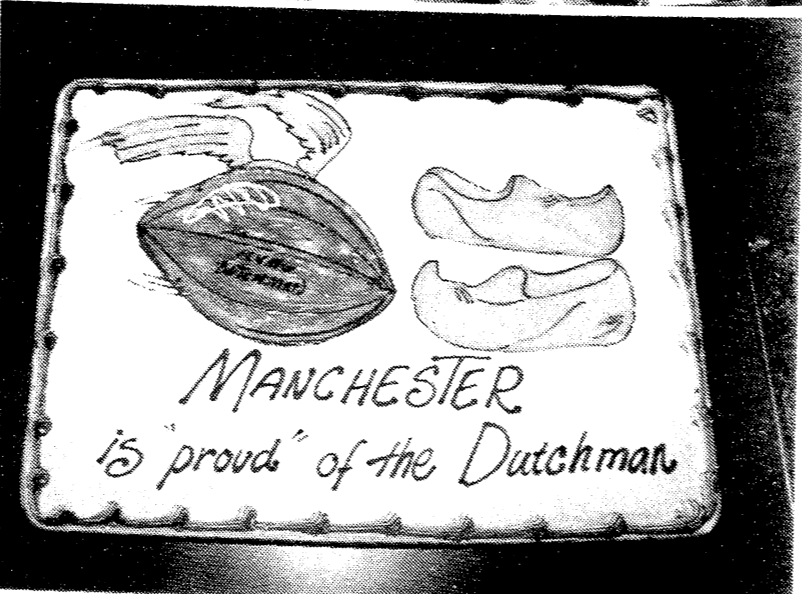


COACH'S COMMENTS
Following the game, Coach Gall and players Tom Fielder, Matt Fielder, and Brandon Woods met with the press. "The biggest regret was that Iron Mountain did not see the best of Manchester. While Iron Mountain was executing the run and pass well, Manchester was having a problem with fumbles. It hurt that the defense was on the field most of the first quarter. I was impressed by the Iron Mountain defense." "Their four games on astro turf showed in their ability to cut. We anticipated the cut, but not that they would be so fast in their execution. Our defense was hurt by not enough practice of live situations on astro turf. It was a whole different experience." For more comments by Coach Gall, check the COACHS' PROFILES, page 12. The FLYING DUTCHMEN certainly had a great season. They have established several records, but hope to be only the first to go to THE DOME. Thank you for all the community support. It was fun to "See YOU there!" Let's DO IT AGAIN!!! — Karen

THE TRIP TO THE DOME



A BIG THANKS TO OUR
WONDERFUL BAND AND
BAND DIRECTOR FOR THE
GREAT SHOW AT THE
SILVERDOME!



THE TRIP TO THE DOME

Hometown Heroes

— by Tom Lannom

We tip our hats off to all you Dutch

And Manchester would like to thank you much.

Everyone takes pride in what you've done

Taking the Dutch all the way to number one.

Playing each game as if it were the last,

Putting all the other teams in a body cast.

As you walk on into the Dome

Pretend you're playing right at home.

The whole town will be cheering for you.

Know the State Championship is way overdue.

We know in our hearts you just can't stop,

You've made it all the way to the top.

When you look at the lights shining down,

Win that game for you and your hometown.

For even if you walk away with a loss,

We know you'll fight through that very last toss.

Keep up with stopping them at zero,

We all know you are all Hometown Heroes.

Great season, Dutch!

Manchester The Road To The Top!

Iron Mountain	8	28
Brown City	26	0
School Craft	10	0
Gobels	55	6
Jonesville	19	6
Michigan Center	63	0
East Jackson	57	0
Vandercook Lake	40	0
Napoleon	33	7
Addison	42	6
Grass Lake	35	0
Hanover-Horton	48	0
Clinton	14	0

Roster	
Brandon Woods	Sr.
Geoff Brooks	Jr.
Troy Niehaus	Jr.
Tom Fielder, C.	Sr.
Mike Barnard	Sr.
Eric Anderson	Sr.
Shane Aherns	Sr.
Brent Woods	Sr.
Brad Davis	Sr.
Shane Goodell	Jr.
Mica Puscas	Jr.
J. D. Gould, C.	Sr.
Andy Winzenz	Jr.
Brent Hoefft	Jr.
Kyle Potter	Sr.
Mike Croghan	Sr.
Chris Fillyaw	Sr.
Jeremy Stroock	Sr.
Mike Bunn	Sr.
Jason Rorabacher	Jr.
Jason Gehringer	Sr.
Doug Meeks	Jr.
Brian Ash	So.
Mark Branch	Jr.
Adam Erskine	Sr.
Matt Fielder, C.	Sr.
Dan Campbell	Sr.
Kevin Phelps	Sr.

FANTASTIC

The Dutchmen of Manchester have accomplished more this season than any other team in the history of Manchester Football. The trip to Pontiac Silverdome for the Class C, Football Playoff Finals, encompassed the entire community.

On behalf of the parents, community members, business persons and area supporters we take this opportunity to say THANKS! We are proud of the Players, Coaches, Managers, Trainers, Cheerleaders, Band Members, Administrators, Teachers and Staff.

Few High School's get to participate in such a historic event. We have witnessed the trip made by this team, from the very first game with Arch Rival Clinton, to the final show down with Iron Mountain. Although the last game of the season did not live up to the high hopes expected of the outcome. The game, as is with life, a part of our learning. Let us look to the accomplishment and carry that forward in our lives.

— Emory Garlick

Junior Varsity Players added to the roster for the play off games, all Sophomores.

- 10 Luke Hugel
- 22 Zach Maghes
- 24 Aaron Garrett
- 30 Peter Paige
- 34 Trevor Schleicher
- 42 Matt Herman
- 50 Mike Mann
- 54 Bryan DuVall
- 60 Joe Tobias
- 73 Justin Porter
- 78 Kevin Dentling
- 80 Mark Harris
- 82 Pat Steele
- 86 Jason Barnes
- 89 Jason Mann

Wes Gall Head Coach: Will Mulvaney, Mike Blumenauer, Dick Fielder, Jim Fielder Assistant Coaches: Kevin Turk, Josh McCalla Managers: Karen Lindberg, Sharon Goodell Trainers.

COACHES' PROFILES



Left, Will Mulvaney; center, Wes Gall; right, Mike Blumenauer

ing the goals well. We had excellent captain and senior leadership. They focused each week on that game without looking ahead. They may have lost out in the celebration of their accomplishments by remaining so focused."

"This team set a record for future Flying Dutchmen to match and/or out do. They allowed the fewest points through the regular season."

"I would like to congratulate the team on the sportsmanship and class they displayed through the regular season and in the playoffs. They did honor to MHS."

"It was nice for the team to be able to celebrate with the community. It was an enjoyable season - seeing the offense play awesome all season - it was outstanding!! The starters gave way to the 2nd and 3rd string players in most games and great play continued. That's a tribute to the skill and the dedication of the members of this team."

Wes Gall Head Coach
BACKGROUND: Saline High School - Class of 1970. Played football, baseball and basketball. Washenaw Community College - Played baseball and basketball. BS from Albion - 1975. Majored in teaching Physical Education and History. Played baseball while

there. MS from EMU in Physical Education. Teaching MHS since 1975. Assistant Football Coach 1976-87. Head Football Coach since 1988.

COMMENTS: "In preparing for the season, I felt that the team could reach the levels of 1992. The kids handled the pressure of meet-

Quantitative Analysis, Statistics, and Strategy at the University level for 14 years. Has Math background.

COMMENTS: This is the first semester which Mr. Mulvaney has taken off since he began teaching. He has been working with MHS, UM and Luther College in Decorah, Ia. this fall. In just a few weeks he will return to his teaching position in Iowa.

"I have enjoyed working with this group. I see guys improving during the season and it is nice to see that happening. The past few weeks they have been playing smart as a team. They were playing smart, believed they could do it, and had great success. That is nice to see."

Mike Blumenauer
Assistant Coach - Line Coach

BACKGROUND: 1991 graduate of MHS. Played Offensive and Defensive Tackle for Coach Gall. Has been a carpenter since graduation.

COMMENTS: "Team unity has been great. This team has good focus in practice. Senior leadership showed. These are the elements that make a great team. In the Silverdome we did not play to our potential and the breaks did not go our way. Just getting to the Silverdome was an experience and the team should remember the good times they had this year."

Thank you, Karen, for keeping our readers informed of the football team's progress the entire season. We are very grateful to you for your excellent coverage of the games. Additionally, our readers have commented on how much they liked the profiles you put together. The Manchester Enterprise

- Wes & Kathy Gall
- Ed & Bonnie Barnard
- Pat & Liz Wallace
- Boots Pucas
- Cecilia & Lynn Niehaus
- Terry Woods
- John & Sally Anderson
- Jerry & Betty Ahrens
- Stan & Judy Leonard
- Nick Pucas
- Don & Judy Steele
- Cheryle & Jerry Pagel
- Linda Woods
- Mary Ann & Joe Dettling
- Mike Eversole
- April Butterfield
- Jay Gillow
- Jeff Etzel
- Sharon Goodell
- Dan Odell
- Adrienne Wallace
- Laura Alber
- Denny & Cindy Steele
- John McGuire

- Stephanie Goodell
- Jack & Kathleen Gould
- Wayne & Sandy Winzenz
- Francine & Jon Hugel
- Larry & Linda McGee
- Garry & Barb Eversole
- Carol Potter
- Larry & Ann Goodell
- Norma & Larry Fillyaw
- Michael Potter
- Steve & Karen Strock
- Dave & Cheryl Bunn
- Sylvia & Eugene Meeks
- Jim & Mary Anne Fielder
- Shelley & Richard Regensburg
- Judy & Rodney Hoeft
- Will Mulvaney
- Charlot Gehringer
- Chris Brooks
- Bruce & Peni Fielder
- Andrew & June Campbell
- Mike Blumenauer
- Robert Davis

- Cathy Herman
- Bob Curley
- John & Holly Porter
- Leigh Tallman & John Williams
- Monica Brooks
- Mike & Norma Croghan
- Ed & Linda Garrett
- Dick & Mary Ann Fielder
- Revs. Jim & Peggy Paige
- Garry & Peggy Schleicher
- Vic & Susan Mann
- Kathy & Terry Harris
- Dennis Herman
- Judi & Lyle Wahl
- Karen & Joe Tobias
- Gerry & Betty Mann
- Ken & Debbie Branch
- Don Erskine
- Kevin Turk
- Josh McCalla
- Bruce & Peni Fielder
- Jack & Evelyn Smith
- Carolyn Hoelzer
- Francine & Jon Hugel
- Judy & Louie DuVall

THANKS! LOCAL BUSINESS

G. E. Wacker, Inc.	Larry Bectel	Keiths Barber Shop	Koebbe Welding	Great Lakes Bancorp
Sutton Agency	DuRussel Potato Farm	Manchester Manor	Dan's Westside	Pilot Metal Product's
The Flower Garden	Fielder's Painting	Manchester Tool & Die	Bridgewater Lumber	Alber Orchards
S & K Sales, Inc.	Gisting & Gisting	Kemner Enterprises	Manchester Plastic	Schebors Greenhouse
Manchester Electric	Movieland of Manchester	Pinnacle Engineering	State Farm Insurance	1 st of America
Manchester Enterprise	Hendley & Datsko, P.C.	Dr. Okey & Staff	Back Door Party Store	McCalla Seed Sales
Tirb Chevrolet	Calamity Jane's	Union Construction	James Roberts	Manchester Pharmacy
Benedict's Service	Premier Contracting	Stein Electric	Jenter-Braun Funeral Home	Midwest Ford
Comerica	Kleinschmidts	Novus Winshield Repair	Dr. Lyon	Manchester Eye Care Ctr
Frank's Place	Baker's Dozen	C. Schmitt Roofing & Siding	Manchester Automotive	Healing Hands
The 18th Century Shoppe	Village Pizza	Tim's Lawn Care	Dr. Stan Gilbert	Johnson Controls
Bruce Bates, D.D.S.				Manchester Lab's

Art Exhibit and Shopping Spree at Sharon Church

Nancy Feldkamp's paintings, done on location in the hill country of central Italy last summer, will be on exhibit at the Sharon United Methodist Church Saturday, December 4, 9:00 a.m. to 12 noon. The artist travelled to small towns in the area for selection of a subject. These paintings will be at the Sharon United Methodist Church throughout the month of December. After December they will be exhibited at the University Hospital.

Also on December 4, 9 a.m. to 12 noon, there will be a Shopping Spree at the Sharon United Methodist Church featuring arts and crafts and baked goods. Some of the items offered will be hand-crafted jewelry, original note cards, paintings on wood, ornaments and other crafts.

Great Lakes Bancorp-Manchester office will be collecting gifts for needy children in the Manchester area December 1-13th. Toys, games, books, hats, mittens gloves, sweaters, etc. are needed for children ages infant through teens. **NO USED TOYS OR CLOTHING PLEASE!**

Stop by Great Lakes Bancorp Manchester office for further details. Thanks to our generous customers and friends, last year's Gingerbread Collection was a huge success!

Flags make Great Holiday Gifts

State of Michigan
Foreign - U of M
EMU - MSU
flags and more!

FOX TENT & AWNING CO.

617 S. ASHELY • ANN ARBOR • (313) 665-9126

Tour proceeds to benefit local charities

TUCUMSEH AREA HISTORICAL SOCIETY'S

Candlelight Tour

SAT. & SUN., DECEMBER 4 & 5 • 6-9 P.M.

Tour 2 beautifully decorated homes and the museum

Tickets available at 302 E. Chicago Blvd., Tecumseh (517) 423-2374

ADULTS \$3; SENIOR CITIZENS & CHILDREN \$2

holiday pen house pottery

Bonnie Greenwald at the studio of David W. Nelson

Saturday
4 December 1993
10:00 am - 6:00 pm.

3045 Broad St., Ste. D
Dexter, MI 48130
(313) 456-7569

Christmas at the Depot

As the Christmas season approaches, many area artists are getting ready for the third annual "Christmas at the Depot" craft show on Saturday, December 4 at the Chelsea Depot from 9:00 a.m. - 4:00 p.m. The "Festival of Lights" held in the museum at the depot on Friday night, December 3, is the kick-off of the Christmas season in the community.

Saturday's craft show will carry many area artists from Manchester, Dexter, Chelsea and Grass Lake. Manchester's Laurie Carey, Kelly Hone and Susan Stawas will have wreaths, Santas, snowmen and Victorian table-top Christmas trees.

Proceeds from the craft show go towards the restoration and upkeep of the Chelsea Depot, a non-profit organization. Back in the 1980's, a group of people saved the depot building from demolition. Half of the building is now used for group meetings, parties and wedding rentals. The other half is the home of the Chelsea Area Historical Society Museum. For more information about "Christmas at the Depot", call Lynda Collins at 475-2977.

New Hours!
Keith's Barber Shop
Tuesday, Wednesday and Friday
7:30-5:00
Saturday 7:00-12:00
Thursday 12:00-7:30
428-8584

Bring This Ad And Save 10% On Any IN STOCK FARM OR CONSTRUCTION TOYS

K&W Equip, Inc.
Hours: M-F, 8 to 5
Manchester, MI
(Since 1947 on M-52)
Phone: 313-428-7666

Manchester Post Office Announces Customer Appreciation Day

The Postal Service has changed and improved its service. "We're dedicated to serving your needs throughout the year, and especially during the holiday mailing season," says Jacob E. Houck Postmaster.

The Manchester Post Office appreciates your business and has deemed Thursday, December 2, 1993, as Customer Appreciation Day. "This year, stated Houck, we want to provide Manchester with all the time and information they need to ensure that holiday greetings and gifts reach their destinations safely and quickly."

Look for friendly, reliable retail window clerks to assist you every mailing need. Philatelic gift ideas and holiday stamps will be showcased during this event. "We'll make that extra effort: "You get it here - We'll get it there!" concluded Houck.

'Tis the Season!

Celebrate in style with a Gourmet Basket that will delight your friends and business associates. Each basket is designed to meet your needs. Festively decorated and bursting with goodies!

Order now for the best selection!

Andeli Gift Baskets
Bev Little, owner • 428-0256

UPS & Free Local Delivery Available
Corporate Accounts Welcome

Senior Health Days presents

"Holiday Memories"

Come and share your favorite holiday stories. Bring yourself and perhaps a photograph, ornament, toy or other item that holds a special holiday place in your heart.

Wednesday, Dec. 8
Saline Community Hospital Blue Room

Blood Pressure Checks, 10:15 - 10:45 a.m.
Program, 11 a.m. - 12:30 p.m.
Holiday Party, 1:30 p.m.

* Door Prizes * Lunch at a Discount
* Carolling * Santa and Mrs. Claus

SALINE COMMUNITY HOSPITAL
A Unit of Catherine McAuley Health System
400 West Russell, Saline, Michigan 48176

KIDDIE KORRAL

20% Off all clothing
with this coupon
December 1-December 8, 1993

Paying top \$\$\$\$ for quality children's clothes, toys, and baby items.

Open Sundays 11 a.m. - 3 p.m.

Saline Shopping Center • 429-3113

PEOPLE & OCCASIONS

Senior Citizens News

— T. V. Ludwick

Snow and a lunar eclipse all in the same night. Did you pop out of bed early Monday morning to watch? Was surprised to see stars shining at 11:30 p.m. and the start of the darkening of the moon (weather people told us it would be possibly impossible for viewing). Have to admit I, too, slept through most of it. I read a sign while traveling that has a great moral, "Patience carries a lot of wait!"

Thursday, December 2: Come all you seniors who were born in December to your special birthday party at Emanuel in the dining room at 12 noon. For reservations, call Jan at 428-7630 on this day before 10:30 (other meals for seniors, you may call Linda at 428-8359 ahead). Chuck (while at CHURCH) roast will be on your plate. My mistakes are so obvious in this column, maybe yours aren't, hope not. This one got through both of my personal proofreaders—they think I do this deliberately (I won't discourage them.) Thanks, Del and Kathy K, you're the greatest.

Monday, December 6: Shopping at Briarwood is planned and the senior bus leaves the Center at 9:30. Call Erma Alber at 428-8707 to reserve a spot on the bus for this and most trips that seniors make.

Tuesday, December 7: A favorite, macaroni & cheese, will be on the table today by Jan and crew. At 12:30, representatives from First of America will be present to discuss a topic of interest.

Wednesday, December 8: (not on calendar) Senior bus will leave the Center at 10 to travel to Saline Hospital for their program and Christmas party, entitled 'Holiday Memories'. You may go along by calling Erma.

Thursday, December 9: Today's menu includes baked fish and this is good! Bingo follows at the Center for fun and fellowship.

A look ahead to Friday, December 10: Here comes the annual Christmas Dinner and program at Klager School for seniors. Fun, fun for those of us who don't like to miss this rapport between kids and us oldsters. A 9:15 pickup by senior bus will be made, call Erma.

By-laws of Manchester Senior Citizens Council have been updated and you may see a copy at the Center or at senior meals. Or, you may call one of the committee members to answer your questions. They are: Howard Parr, 428-9233; Rubena Boelter, 428-8655; and Louise Breitenwischer, 428-7543.

new ARRIVALS

Skylar Noelle Haeussler
Mr. and Mrs. Armin Haeussler are pleased to announce the birth of a new granddaughter, Skylar Noelle Haeussler, to Sharon (Fritts) and Peter Haeussler.

Skylar joins Breanne, age 3, and Stephanie, age 6, to make a trio at 6900 Steinbach Road, Manchester. Skylar weighed 8 lbs. 3 ozs. and was 21" long at birth on November 12, 1993.

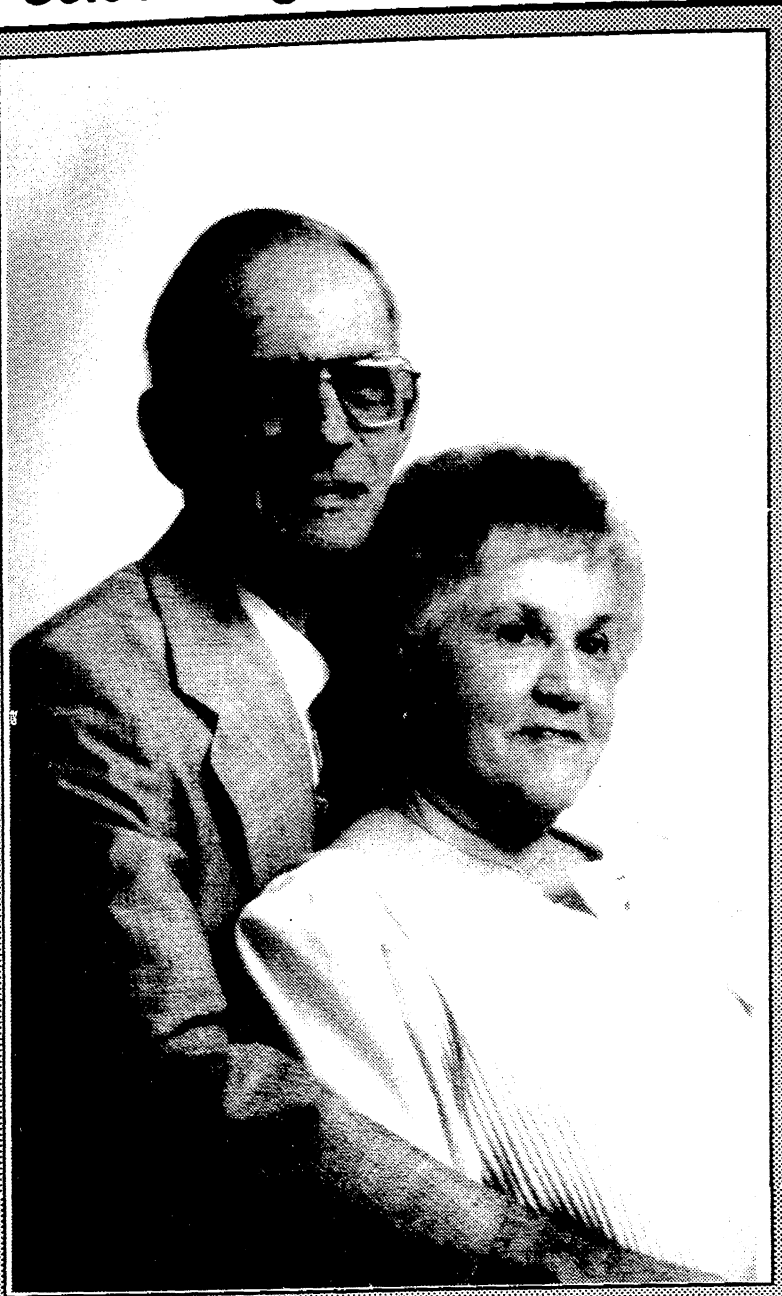
Ethyl and Harold Fritts of Ann Arbor are the other proud grandparents.

Anjalon Thomas St. Charles ("A.J.")

Cary and Sarah St. Charles of Clinton proudly announce the birth of their son, Anjalon Thomas, on November 9, 1993. Anjalon was 7 lbs. 15 ozs. and 20" long.

Grandparents are Pastor Tom Butterfield, Wenda Butterfield, and Tom and Emily St. Charles, all of Manchester.

Celebrating 50th Anniversary



Mr. and Mrs. Robert Tase will be celebrating their 50th wedding anniversary, December 5, 1993.

They were married in the Manchester United Methodist Church. They made their home in Manchester, moving to Saline in 1968, where they still reside.

Mr. Tase is retired from Ford Motor Company after 35 years of employment. Mrs. Tase is a volunteer at the E. V. H. Home in Saline.

They have three daughters: Mrs. Betty (Larry) Benedict, Mrs. Sally (Brad) Bradshaw and Mrs. Shirley (Bob) Perland. They have seven grandchildren and three great-grandchildren.

The Charles Reinhardt Co. Realtors
DEBORAH ENGELBERT
Sales Associate

2452 East Stadium Blvd. Off: 971 - 6070
Ann Arbor Res: 475 - 8303

Manchester Masonic News

The installation of officers of Manchester's #148 F&AM for the year 1994 will be held December 13 at 8:00 p.m., third floor of the Comerica Bank Building. Richard Sands PGM will officiate. The public is welcome.

Officers for 1994 are: Brad Seales, Worshipful Master; Don Burchett, Senior Warden; Matthew Donnellon, Junior Warden; Ronald Schook, Secretary; Richard Densel, Treasurer; Earl Alber, Chaplin; Roy Maggard, Tyler; John Church, Senior Deacon; John Knul, Junior Deacon; James Schook, Marshall; John Schook, Steward; Bill Martin, Steward.

Kirk Excavating
Sand - Gravel - Fill Dirt
Basements - Driveways
Licensed & Insured
428-7938
Dave Kirk
14180 Schlewiss Road
Manchester

Carpentry, remodeling & renovation
TED MICKA
Specializing in Older Homes & Bars
Licensed & Insured
(517) 536-4371
Brooklyn, MI 49230

TIRB CHEVROLET & GEO
A Good Selection of New and Used Cars On Our Lot
Don't Get Disturbed. See Tirb!
A Metro Detroit Chevy Dealer
313-428-8212 • Manchester

It's An Antique World

— by Marilyn Koebbe

Have you ever thought about days gone by and wished that you had been a part of those wonderful days of yesteryear? At one time or another, we have wondered what it might have been like venturing out on a wagon train headed west or traveling the Mississippi River in one of the paddle wheelers.

Sometimes a trip into the past is as close to us as our own basement or attic. Stored away in boxes or trunks or sitting in some dark corner are adventures into the past.

We hear of so many individuals that have had no use for whatever was stored for years and decided it was time to clean house. Out went treasures that might have been enjoyed and relished by another but ended up in a burn pile or a landfill.

Let's take an imaginary trip back in time to an attic. We open the door into a time long forgotten and see an era unfold before our eyes.

Furniture was stored away because it was replaced by new and "better". Perhaps the rocker in one corner of the attic was placed there because someday it would be taken downstairs to be reglued or painted, but instead now sits in the attic collecting dust. That wonderful old rocker once had a gentle hard-working mother or grandmother sitting in it cradling a child to sleep. Perhaps, youngsters were seated at her feet as she retold stories of her childhood. Maybe she is relaxing after all the chores were completed and the family was tucked away in their beds for the night.

Our eyes come to rest upon an old trunk. Did it come across the ocean and then by stagecoach as immigrants yearned for a better way of life in this new land? We open the lid and find so many treasures. On top is a quilt stitched with hands of love

for that cold winter night. We lay the quilt aside and find a handful of pictures of people whose names have been forgotten. As we continue to look inside this trunk, our eyes begin to twinkle and a smile comes across our lips as we remember the joy of that Christmas long ago when a doll or a train set we saw in the general mercantile was under the Christmas tree.

We find reminders of the one room school houses as we turn the pages of an old McGuffey's reader or wonder who that secret admirer was who sent a valentine ever so long ago.

Turning our attention away from the trunk, we spot an old dresser and we wonder what has been stored away from view. We open a drawer and discover handmade linens, tablecloths, pillow cases and doilies and remember these once graced pieces of furniture throughout the house. Opening another drawer, we find a small box filled

with pieces of jewelry worn in days gone by.

Our eyes fall upon a radio and we remember the time we gathered around to listen to programs such as The Lone Ranger, Fibber McGee & Molly, The Shadow, Sgt. Preston of the Yukon, programs that allowed our imaginations to soar with suspense or bring laughter to our hearts.

The sadness surrounding all of this is to realize that scores of items have been lost forever

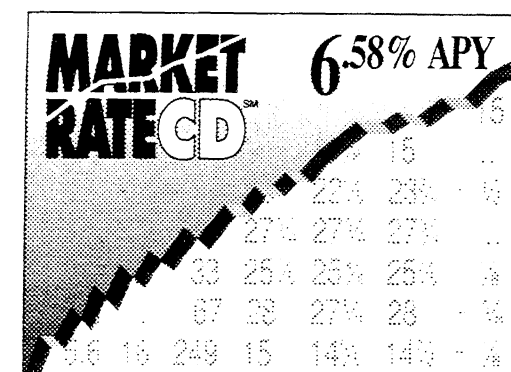
because someone tossed them aside and they were destroyed.

If a person finds themselves wanting to rid themselves of the excess items, remember someone in this world may want to enjoy them a little while longer. Items can be worth a few dollars or hundreds, however, no price tag can ever be placed on fond memories of days gone by.

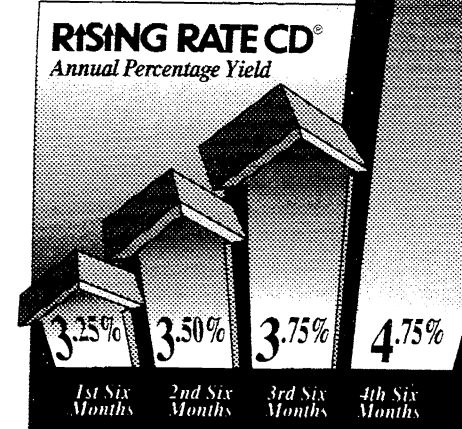
As we venture through this antique world, there are many memories to be saved for all to enjoy.

DOLL AUCTION
Saturday, December 4 • 6:30 p.m.
1282 Wamplers Lake Rd. (Hwy 124)
Brooklyn, MI (1/2 mile N. of US 12)
Auctions by
Dearborn West Estates Liquidators
(517) 592-3911
Don and Marilyn Koebbe
Toys wanted for future auction

CDs for people who aren't afraid of heights.



6.58% is the Annual Percentage Yield (APY) you would have earned on a two-year deposit maturing on October 23, 1993. APY is based on historic results and is not intended to indicate future yields or results.



Introducing The Market Rate CD.
Wall Street Thrills Without Wall Street Chills.

This year we're offering you a blue chip opportunity to invest in a new kind of two-year CD. One that allows you to go after Wall Street's potentially higher rates without risking your principal. Your Market Rate CD can be opened with a low \$2,000 minimum deposit. At the end of each 52-week period, your interest is calculated based on the average change in the S & P 500® Index** as reported in *The Wall Street Journal*. And at maturity, you're guaranteed a 100% return of your FDIC-insured initial deposit. The new Market Rate CD. Now the best way to lock in the market's high earnings potential is with a CD that has no risk to principal.

Lock Up A Rising Rate With A CD That Won't Lock You In.

Every six months of its initial two-year term, our Rising Rate CD gives you a guaranteed increase in your interest rate without locking you in. The rate earned for each six-month period rises as the chart above indicates, giving you 4.75% APY during the final six-month period.* You can withdraw all of your investment within the first 10 days of any six-month interval during the initial two-year term without penalty. Or you can make a partial withdrawal without penalty as long as you maintain a \$1,000 balance. And the minimum deposit amount is only \$1,000. The Rising Rate CD. The liquidity you want, with the guaranteed interest growth you need.

For more information, call or visit your nearest First of America bank office today.

FIRST OF AMERICA
A bank for life.™

A substantial penalty will be imposed for early withdrawals made other than in periods stated above. Deposit limits apply. Deposits insured by the FDIC up to \$100,000 per depositor. *Rising Rate CD rates good as of 10/31/93, subject to change without notice. Individuals and sole proprietors only. Limited time offer available at participating banks only. Annual percentage yields shown above reflect the yield for each six-month period separately, and are not cumulative yields. At the fourth maturity, your CD will automatically renew as a standard two-year CD. **S & P 500®. "Standard & Poor's", "S & P 500", "Standard & Poor's 500", and "500" are trademarks of McGraw-Hill, Inc. and have been licensed for use by First of America. The product is not sponsored, endorsed, sold or promoted by Standard & Poor's and Standard & Poor's makes no representation regarding the advisability of investing in the product. Not available for IRAs. Member FDIC. Equal Housing Lender. ☎ If hearing impaired, TDD available from 9-5 EST at 1-800-289-4614. ☎ For more information, call 1-800-735-0034.

Congratulations Manchester Dutch Football on a GREAT season!

SALINE COMMUNITY HOSPITAL
A unit of Catherine McAuley Health System
400 West Russell, Saline, Michigan 48176

CHRISTMAS BOUTIQUE
SATURDAY DEC. 4
10 a.m. to 3 p.m.
THIS SALE OF UNIQUE CRAFTS AND ARTWORK WILL TAKE PLACE IN THE BANQUET ROOM AT HAARER'S MEETING PLACE
223 E. MAIN
MANCHESTER, MI



Manchester Township Library

"Michigan's Oldest Township Library" Established 1834

Monday, Tuesday, Wednesday, Thursday
11:00 a.m. - 8:00 p.m.
Friday and Saturday 11:00 a.m. - 4:00 p.m.
Phone 428-8045

"Books Change Lives" Writing Contest

The Weekly Reader Corporation and the Michigan Center for the Book are cosponsoring a national Letters about Literature essay contest open to students in grades 6 through 12. Deadline for entries is December 23, 1993.

To enter, a student must write a letter to the author of a book describing how reading the book has affected the student's way of thinking about a particular person or issue.

Step 1: Select a book you read recently and about which you have strong feelings. You need not like a character or even the way the events in the book turn out in order to be affected by the story. Books can make us happy, sure -- but they can also frighten or anger us. Exploring why you react the way you do to literature is a valuable lesson because it teaches you about yourself.

Step 2: Write a letter of 1,000 words or less to the author, explaining what the book taught you about yourself. Did you discover something you had in common with one of the characters? Did the story mirror your life? What questions did the book make you ask? Don't summarize the plot. The author wrote the story and already knows what happened. What the author doesn't know is how the book affected you. Just make your letter honest, personal and conversational, as if the author were a friend who would write back to you.

Step 3: Sign your letter and send it by December 21, 1993 to Books Change Lives, Read, P.O. Box 2791, Middletown, CT 06457. Include with your letter the entry coupon below or call 203-638-2622 to obtain a coupon. Each finalist will receive a cash award. The grand prize winner will win an all-expense paid trip to the Library of Congress in Washington, D.C.

Entry Coupon

Student's Name: _____
Home Address: _____
City: _____ State: _____ ZIP: _____
Teacher: _____
School: _____
School Address: _____
City: _____ State: _____ ZIP: _____
School Phone: () _____

LASER KARAOKE Disc Jockey

*PARTIES*WEDDINGS*GRADUATIONS*SCHOOL DANCES

AARON WAY (517) 764-1407

STEIN ELECTRIC COMPANY, INC.

• Licensed & Insured Contractor •
• 24 Hour Emergency Service •
Ag. • Commercial • Industrial • Institutional • Residential
Motor Controls & Lighting

(313) 428-9050

Rick Graustein

Bruce A. Bates D.D.S.

500 Galloway Drive, Manchester, Michigan

(313) 428-8277

Complete Family Dentistry

• Adults & Children Always Welcome as New Patients.
We Accept Dental Insurance
VISA • MasterCard • Discover
Payment Plans Available

Gentle Dental Care

Relaxing Gas Available Upon Request



Manchester Community Schools will be putting on their holiday concert Monday, December 13, 7:30 p.m. at the high school study auditorium. All band members fifth through twelfth grade will be performing for your enjoyment. Everyone is welcome to attend.

Faist-Morrow

the place to go for new or used vehicles

"Where the QUALITY Used Cars Are"

1500 S. Main St.
Chelsea
475-8663

Tiger Cubs November Meeting

This month's meeting was hosted by Steve Knight at the Ann Arbor Natural Science Museum on Sunday, November 21, 1993. After much confusion over parking and the location of the museum, we were able to explore the museum. (To the Tiger Cub parents, I do apologize for the inconvenience this caused.)

The excitement of the boys was at a very high level! We explored the entire museum in what I would consider record time - it took less than one hour. If you have ever been to the museum you would know that we were moving!

At the end of our whirlwind trip, the boys were asked what their favorite exhibit was. The answers ranged from "everything", to the specifics such as the T-Rex skeleton head; the

large fossil egg (we discovered that other eggs like this one were used as carrying containers and could hold up to two gallons, how about one of these eggs for breakfast!); the mineral rocks; the Native American Exhibits - I guess "everything" does sum it up pretty good.

We appreciate Mr. Steve Knight for hosting this month's meeting, and the boys for their good behavior and the parents for bringing the boys. Next month's meeting will be held at Charlie Sears' home on December 12 at 2:00 p.m. We hope to make Christmas ornaments. More details when the time gets closer.

— Christina Trinkle
Tiger Cubs Coordinator

American Legion Auxiliary

The American Legion Auxiliary will meet at the legion Hall on December 8, 1993, at 6:30 p.m. This will be the Christmas potluck meeting.

Santa Claus will be in Manchester on Sunday, December 5 from 1 to 3:00 p.m. Come and meet him at the Manchester Township Hall and tell him if you've been naughty or nice!
— The Key Club



Great Lakes Bancorp-Manchester office will be collecting gifts for needy children in the Manchester area December 1-13th. Toys, games, books, hats, mittens, gloves, sweaters, etc. are needed for children ages infant through teens. NO USED TOYS OR CLOTHING PLEASE!
Stop by Great Lakes Bancorp Manchester office for further details. Thanks to our generous customers and friends, last year's Gingerbread Collection was a huge success!

1000'S TO CHOOSE FROM
OPEN NOV. 27 'TIL CHRISTMAS
13367 TODD RD.
(2 1/2 miles W. of Lewis) IDA
313 269-2344
VAN WORMER TREE FARM
US-23 south, exit Summerfield Road (KOA), turn left, left at first road, left at second road, turn right at first road to farm. (Follow signs)

Local teens participate at State Contest



Left, Jodi Feldkamp, and right, Sarah Feldkamp

Sarah and Jodi Feldkamp of Manchester competed in the 1993 Michigan Make It Yourself With Wool contest held in Lansing on November 6, 1993.

Sarah, a junior at Manchester High School, constructed a Pendleton wool skirt and lined gaberdine wool jacket. Sarah was the first place winner in the junior category and will advance to the National competition in Reno, Nevada. She will be judged on her sewing ability with these garments and her modeling skills.

Jodi, a 8th grader at Manchester Middle School, constructed a Pendleton wool plaid skirt and mohair wool tunic. Jodi, who was also in the junior category of this competition, was the second place winner and the recipient of a Singer sewing machine.

Sarah and Jodi are the daughters of Elaine and Arthur Feldkamp of Manchester.

Jason Cousino of Manchester was recently elected Parliamentarian of the Townline Workers 4-H Club.

★ 265-3055 ★
24 Hr. Movie Info Hotline
ADDIAN CINEMA 6
3150 N. ADRIAN HWY.
Shows before 6 p.m. \$3.00

Dec. 3 - Dec. 9
MRS. DOUBTFIRE PG13
Fri & Mon-Thur-5:00, 7:30, 9:50
Sat & Sun-12, 2:30, 5:00, 7:30, 9:50
ADDAM'S FAMILY VALUES PG13
Fri & Mon-Thurs-4:30, 7:00, 9:20
Sat & Sun-12:20, 2:20, 4:30, 7:00, 9:20
COOL RUNNINGS PG
Fri & Mon-Thur-4:45, 7:15
Sat & Sun 12:15, 2:30, 4:45, 7:15
A PERFECT WORLD PG13
Fri & Mon-Thur-4:20, 7:00, 9:45
Sat & Sun-1:00, 4:20, 7:00, 9:45
THREE MUSKETEERS PG
Fri & Mon-Thur-4:20, 7:20, 9:40
Sat & Sun 12:10, 2:10, 4:20, 7:20, 9:40
WE'RE BACK! G
Fri & Mon-Thurs-4:45, 7:40
Sat & Sun 12:30, 2:40, 4:45, 7:40
CARLITO'S WAY R
Fri-Thur 9:30 ONLY
MAN'S BEST FRIEND R
Fri-Thurs 9:20 ONLY
COMING DECEMBER 10
SISTER ACT 2
HOLIDAY GIFT BOOKS AVAILABLE

PREMIER CONTRACTING INC.
Full Service Residential Building & Remodeling
"Let us help you with your building plans"
Lots Currently Available
Ron Milkey (313) 428-9826

YOUR HOMETOWN FULL SERVICE GARAGE
MIDWEST FORD
428-8343 • 510 W. Main
M-F 7:30-5:30
Motorcraft Fast Lube-15 minute oil change
(No appointment necessary)
Warranty Repairs, Factory Equipment, Parts, Certified Mechanics, Oil Change Club
Don't forget a portion of your sale goes to our scholarship fund! Enjoy a little Midwest Magic!
FORD QUALITY CARE Where the Quality Continues
Clip and Save! Save this ad so you will know where to call for service for your vehicle.



COOKIES WITH SANTA

On Saturday, December 11, 1993 from 12:00 - 3:00 p.m. at the American Legion Hall in Manchester, Manchester Girl Scout Troops #587 and #543 will sponsor "Cookies with Santa".

This service to our community is absolutely free. Children must be accompanied by an adult to attend.

Anyone interested is welcome to come join our troops in singing Christmas carols, listen to the festive music of the Manchester Community Band, make holiday crafts, which will include reindeer ornaments, Christmas card making, candy cane reindeer, and enter in our Santa coloring contest.

First and second place prizes will be awarded to the winners in three different age groups 3/4, 5/6, and 7/8 year olds. The contest judging will take place at 3:00 p.m. You do not have to be present to win. You will be notified by one of our troops. The winners' pictures will be displayed in the window of the Baker's Dozen.

Additionally, we will have a very special guest from the North Pole to take any special requests from the communities youngsters, and share cookies and milk (or coffee for the adults).

We hope this will be a fun and festive event for the families of Manchester.



Scouting For Food

Cub Scout Pack 421 will be "Scouting for Food" Saturday, December 11, 1993 in and around Manchester.

The Cubs personally deliver flyers to many homes in the Village telling of this event. All food items collected will be given to Manchester Family Services for their Christmas baskets.

If you would like to help, please place canned goods in a bag outside your front door on Saturday morning, December 11, for the Cub Scouts to pick up.

The Scouts have been instructed not to ring doorbells or enter homes.

Thank you for your support.

Irish Hills Sweet Adelines

If you enjoy singing harmony and would like to discover what four-part harmony is about, come to sing Christmas music at the Plotter Center in Adrian.

Call Lois at 517-265-5161 (days), or Evelyn at 517-265-7024, or Donna at 313-428-8091 for more details.

King's Daughters

The Manchester King's Daughters will meet for the annual Christmas potluck on Thursday, December 2 at 12:30 p.m.

Bring your table service, a dish to pass and the gifts for the Children's Shop at Motts. Shirley Reinhart will be the hostess.

Sula Darlene Jeffers
ATTORNEY AT LAW
146 E. MAIN STREET
P.O. BOX 625
MANCHESTER, MICHIGAN 48158
(313) 428-8190

DEER PROCESSING
Cutting & Wrapping
Vacuum Packing Available
Refrigeration Available
YOUR DEER
Venison Salami, Jerky, Polish & Italian Sausage, Pepperoni Sticks
WAYNE BUCKNER
10886 Lawrence Rd., Brooklyn
1-800-638-1695
(517) 592-2579
Other Custom Meat Cutting Available
State Inspected Facilities

CLASSIFIEDS

SERVICES

Michigan Peat Sales: Black dirt for sale \$12 a yard delivered. Fast delivery. 428-9664 tfn

Lost or Found a Pet? Call the Huron Valley Humane Society. 662-5585. tfn

Fielder Painting: Interior and exterior. Free estimates. Senior citizen discount. Phone 428-8506 tfn

Black Dirt For Sale: By the pickup load or delivered. Dozer and backhoe work also available. 428-9265. tfn

Village Hair Forum in the Mill. Full service salon with tanning beds. 428-7684. tfn

Excavating: Sand, gravel, backhoe and bulldozing. Reasonable rates. 428-9265 tfn

Benedict Painting: Call Chuck for free estimates. 15 years experience — interior & exterior painting. 517-536-4812. tfn

Little Wack Excavating: Basements. Drainfields. Bulldozing. Black Dirt. Topsoil. Sand. Gravel. Ponds. Snow Removal. Salting. Paul W. Wackenhut 313-475-8526. 93/p

Wallpaper hanging/stripping. Beautiful selection of papers and fabrics. SALE now in progress! Call "MY SISTER'S HOUSE" for free in-home consultation. Juli Trolz 428-7117. tfn

Farmers' Sand and Gravel. We deliver and spread driveways. 475-8850 tfn

Alber Excavating: Basements, drainfields, driveways, top soil, black dirt, gravel and sand. Steve Alber 517-536-8257 or 428-8636. 12/93p

Attention Homeowners & Renters Age 55 & Over: 30% Discount on Homeowners & Renters Insurance. Sutton Agency, Inc. 428-9737. tfn

WORK WANTED

Will take care of your farm animals while you are away on vacation. Specializing in horses. Experienced. Local references available. Dependable. 428-8005 evenings or weekends. tfn

Snow removal—sidewalks, lots, and driveways. Salting available. Call T & N Service, Inc. 428-7002. 12/2, 9, 16, 23

CHILD CARE

Fall Enrollments being accepted in Toddler, Preschool, and Latchkey Programs, for children 1-12 years. Call Little Dutch Child Care Center at 428-8988. tfn

Country Glen Daycare: A safe and caring environment with nutritious meals and snacks. Playtime, fun time, story time, naptime. 428-9100. 12/2, 12/9p

PETS

AKC Golden Retriever Puppies-ready for Christmas! Taking deposits now. (313)586-8126. 12/2p

HELP WANTED

Chelsea Big Boy- All positions available. Apply in person. 475-8603. 1610 S. Main, Chelsea. 5/13 tfn

SALES

The recent merger of TruGreen in ChemLawn has created a need for several sales people. TruGreen-ChemLawn is the largest and fastest growing lawn and tree service in the nation with the annual sales of over \$450 million. The individuals we seek will be motivated, successful and have good communication skills. In return we offer a base salary between \$275 and \$325 per week, commissions, medical benefits, 410K and stock options with ServiceMaster, our parent company.

Persons looking for advancement into sales management are encouraged to apply. For confidential interview call Mr. Hunt, 313-665-7707, Ann Arbor. EOE/MF 11/11, 18, 25, 12/2

\$6 \$6 Manpower has jobs, starting at \$6 an hour. No experience necessary. Will train. Come in today.

MANPOWER

313-665-3757 11/18, 11/15, 12/2, 12/9

Western Washtenaw County we need you! We have a variety of jobs available IMMEDIATELY. Call 665-3757 for details. 12/2

ADIA

The employment people announces the opening of its Manchester Office December 1st. If you are looking for temporary/permanent clerical, industrial, or technical positions in Manchester, Chelsea, Dexter and Ann Arbor, Call Today 428-2600. 12/2, 12/9

Latchkey Assistant needed 3-6 p.m., M-F. Pre-school assistant needed 7:30 a.m.-12:30 M,W,F. Call 428-8988. 12/2, 12/9

MARKETING EXECUTIVES-BOOK

Manufacturer serving national market is expanding our marketing department. We are looking for someone to join our team of marketing executives. Position entails qualifying leads for Sales Dept. and handling in-house telephone sales. Excellent Communication in telephone skills required. Knowledge of printing is a plus for this entry level position. Please apply in person:

Book Crafters

140 Buchanan Chelsea, Michigan E.O.E./M/F/H 12/2

OPEN HOUSE

Holiday Open House at Jefferson Art Studio-Porcelain Lithophane nightlights, lamps, misc. antiques. Saturdays thru Christmas, Dec. 4, 11, & 18. 10-4. 4371 Lima Center Road, north of Pleasant Lake Rd. 428-8861. 12/2, 9, 16

FOR RENT

Large 2 bedroom in the Village. S585 includes all utilities. No pets. 428-7173. 9/16 tfn

One Bedroom Apartment for Rent. No pets. Lease. 428-9216 tfn

Office space for rent. Downtown Manchester. 517-431-2008. 9/2tfn

Hall-"Where Friends Meet" Receptions, banquets, parties. Reasonable rates. Seating 300 plus. 517-456-4506. 10/7-12-30p

Efficiency apartment for rent. 3 miles from Tecumseh. Ideal for single senior citizen. Call days 428-2216 or call 517-423-6862 eves.

For rent-3 bedroom ranch. Month to month lease. \$700/month. 313-428-9150. 11/18tfn

Small ground floor one bedroom apartment. Month to month 313-428-9150. \$300./month 11/18 tfn

TRAVEL

BAHAMA CRUISE! 5 days/4 nights, Underbooked! Must sell! \$279/Couple. Limited Tickets. (407)767-8100 ext. 7423 Mon-Sat. 9 a.m.-10 p.m.

ANNOUNCEMENTS

NEED COLLEGE MONEY? For information, application for scholarship search, send self addressed #10 envelope to College Financial Sources, Box 815, Manchester, MI 48158. tfn

CARD OF THANKS

THANK YOU! Many thanks to the individuals who contributed to the Scott Hinderer fund. Lutheran Brotherhood's Friends in Fellowship Branch 8081, of Washtenaw County, organized this fund drive to help the family defray the expenses of a bone marrow search and transplant for Scott, to be performed at Detroit Harper Hospital.

He is the son of Ted Hinderer and attends the South Elementary School of Chelsea. He has been treated for acute lymphatic leukemia (ALL) for about three and a half years and after six months without treatments, the symptoms occurred again in August of 1993.

With the addition of Lutheran Brotherhood's matching funds, to this date the fund now totals \$16,907. Lutheran Brotherhood is a fraternal benefit society serving Lutheran families and communities nation-wide. Friends in Fellowship Branch is one of about 850 branches across the nation, which provides the network for promoting the spirit of volunteerism and for distributing funds for various programs and projects.

Norman Wenk, chairman

A HUGE BIG THANKS to Joe Merkel and The Wolverine for providing lunch for the Varsity Dutch Cheerleaders on Friday before the game at the Silverdome. What a great neighbor you are Joe. Thanks again, Judy Leonard & the Cheerleaders

MISC. FOR SALE

McCulloch Saws-3205 AV-14 saw, several different kits available. Ask for demonstration. Engine oil and bar oil for all makes and models of saws. Chain bars and sprockets for all makes of saws — good prices, too. A few good used saws, ask about them. Small welding jobs! Earl Alber 313-428-8707. Anything not picked up by January 1st will be disposed of. tfn

Free Office Furniture-428-9737. 11/25, 12/2

Feldkamp's Christmas Trees: Starting Nov. 26th. U-cut or we cut. Also wreaths. Friday & Saturdays 9-5, Sundays 1-5. Other days by appointment. 428-8571. Reno & Nancy Feldkamp. 1-1/2 miles west of Wacker's on Pleasant Lake Road, then 1/2 mile north on Smyth Road. 11/25-12/16p

Chest Freezer- 15.1 cu. ft. Sears Best, 3 baskets, lock, almond. 7 years, runs great. \$175. 428-0472. 12/2p

USED VEHICLES

'79 chevy 1/2 ton pick up. Rusty but trusty. \$600 or best offer. 428-0926. 11/25, 12/2p

MISC. FOR SALE

3rd Annual Country "Christmas at the Depot" Craft Show. Sat. Dec. 4th 9-4. The Chelsea Depot Quality area crafters. Come and shop for Christmas! 11/25, 12/2p

ANTIQUES

AGE-OLD WINTER ANTIQUES MARKET. Ann Arbor. Dec. 11-12. U M Coliseum. 200 Dealers in Quality Antiques from Furniture to Jewelry. Sat. 8-6; Sun. 9-4. I-94 EXIT #175, north to Hill St., right to 5th. (517) 456-6153. 12/2, 12/9

Manchester Antique Mall: 35 Dealers. Open 7 days 10-5. 116 E. Main. 428-9357 tfn

Give a Gift Subscription to The Enterprise — Just Like a Letter From Home



Careful planning and preparation will make your special day a reality.

Let us help with our complete line of quality CARLSON CRAFT wedding invitations and accessories.

See us today for your complete paper trousseau.

The Manchester Enterprise 109 E. Main St. Manchester, MI 48158 313-428-8173

REAL ESTATE

110 Auburn A pleasant surprise awaits you—this home is twice as spacious as it looks! Full walkout adds room for exercise equipment, Mother-in-law or teen apartment or possible home office. Lovingly maintained, ready to move into and enjoy. Offered at \$119,000.

Janice Booth Coldwell Banker Schweitzer Real Estate 930-0200/428-9308 E.H.O. tfn

GENTLEMEN farmers or horse lovers! Farmhouse in Manchester with outbuildings. \$165,000. Sandi Smith, 971-3333 days/475-9888 eves. 36786.

23 ACRES comes with this three-bedroom ranch in Manchester with pole barn, walk-out basement. \$129,000. Barbara Gomes, 429-2200 days/517-456-7038 eves. 36517.

OLD WORLD charm in this two-story four-plus bedroom with 2 1/2 baths in Manchester. \$114,900. Barbara Gomes, 429-2200 days/ 517-456-7038 eves. 36469.

ROLLING sites with trees in Manchester. Naturally suited for walk-outs. Five parcels, approx. 11 acres each. Starting at \$29,000. Sandi Smith, 971-3333 days/475-9888 eves. 36581.

Equal Housing Opportunity EDWARD SUROVELL CO. 12/2

WANTED

Wanted: Antiques, old toys, glassware, jewelry, furniture. (517) 592-3911. 10/21, 28, 11/4, 11, 18, 25p

Clinton, Michigan-Commercial building for lease or sale, located on Main Street. (Michigan Ave.) Setup for doctors office. Call 428-9202. (other possibilities). 10/21 tfn

Free Hearing Screenings for Seniors

Free hearing tests for persons 50 and over will be offered by appointment Friday, December 3 all day, and Monday through Friday, December 6 through December 10 mornings, by Larry J. Koch, audiologist on staff at Saline Community Hospital. The testing will be in Audiology Services, Suite 101 in the Saline Professional Office Building, 420 W. Russell, in Saline.

The hearing screenings of tones and speech will include an ear and hearing health history and consultation. Follow-up recommendations will be offered as needed. Take-home booklets and brochures about hearing and hearing loss will be available at no charge.

Appointments are required. Call 429-1520.

Free or Low-Cost Exams, Tests and Screenings Available

Many area women over the age of 40 are eligible for free or low-cost mammograms and pap tests, pelvic exams and clinical breast exams. The Washtenaw County Public Health Division, through the Title XV Program has arrangements with several local facilities to provide these services. For more information, call 484-7220.

Available Friday Dutchmen State Finalists T - Shirts \$15 & Sweatshirts \$25

Get them from the Leadership Class during Lunch hours at the High School Friday thru next week Also available @ the Enterprise

What a Great Christmas Present for that Dutch Player, Fan, Parent, Brother/Sister, Friend . . .

Get Yours before they Sell Out!!

Kleinschmidt True Value Hardware 19860 Sharon Valley Rd. Manchester, Mi.

Mon - Fri 7 am - 6 pm 428-8337 Saturday 8 am - 5 pm Sun. 10 am - 4 pm

CHRISTMAS OPEN HOUSE

Friday, Sat, & Sun. Dec. 3rd-5th "Free Refreshments"

SANTA'S COMING TO TOWN! WHEN: Sat. Dec. 4th 1-3 P.M. WHERE: Kleinschmidt True Value Bring the kids to Kleinschmidt True Value. Treats from Santa will be passed out!

ANY 1 TOY IN STOCK 40% OFF Reg. Price Limit 1 coupon per family Expires Dec. 5

SALE \$8.99-\$12.99 Porcelain Collectibles Assorted Houses, Shops, and churches

69¢ Candy Cans. Popcorn Tin with 3 types of corn. ...\$7.99

uniden Bearcat SALE \$89.99 Bearcat 10-Band 16-Channel Scanner

TRUE VALUE Festival Bird Feeder SALE \$9.99 Perky-Pet Brand

TO YOUR GOOD HEALTH

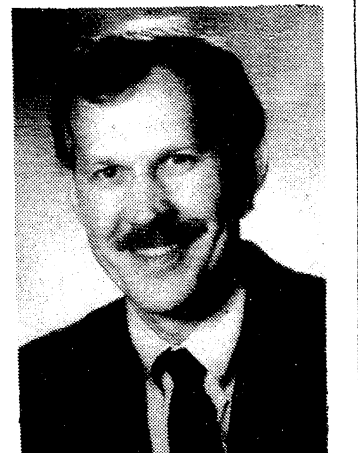
313-429-4885 COUPON 517-423-2148 Saline in the Saline Shopping Center 1ST OPTOMETRY eye care centers Dr. Thomas Cunningham DOES NOT APPLY TO OTHER DISCOUNT OFFERS OR PRIOR ORDERS Prescription Eyeglasses

ORTHODONTIST

RAYMOND P. HOWE D.D.S., M.S.

515 S. Main Street Chelsea

Telephone (313) 475-2260



CLINTON FOOT & ANKLE CLINIC

301 W. Michigan Ave. • Clinton, MI 517-456-4114

Offering complete foot and ankle care for the entire family. -Specializing in-

- Reconstructive Surgery Laser Surgery Sports Injury Warts Infant and Child Disorders Ingrown Nails Diabetic Care Fungus Foot and Ankle Injuries Nerve Pain Heel Pain Skin Problems Foot Pain Bunions Hammertoes Calluses Orthotics (Custom Casted Shoe Inserts)

DAVID R. LEVITSKY, D.P.M.

Board Certified Surgeon Member of: American Podiatric Medical Association Michigan Podiatric Medical Association

Hours: Wednesday/Fridays 10:00-5:00 p.m. Saturdays 10:00-12:00

Please call for appointment—Most insurance accepted

Put Your Confidence In Our Mobile Home Insurance.

Your mobile home should be protected from much more than just fire and wind. We insure thousands of mobile homes, so we know that you also need quality protection for contents, personal liability, flood, theft and many more coverages. You can also save money when you qualify for our mature mobile homeowners discount.



Auto-Owners Insurance

The "No Problem" People

Sutton Agency, Inc. CONNIE WIDMAYER, OWNER 136 East Main Street Manchester, Michigan Phone 313-428-9737



With a whoosh, Santa letters speed to the North Pole at Briarwood

Actually, the magic starts at a special children's activity area in the corridor rest area going towards Jacobson's (off Grand Court) and contains kid-sized tables, chairs and plenty of stationery. After a child composes a letter to Santa and drops it in that big red mailbox nearby, a cheerfully uniformed "poestalmaster" presses a lever.

That's when the fun begins. With a great whooshing sound, the letter appears to soar up the tube. Chase lights, accompanied by jingle bells, rapidly follow the letter's progress as the tube soars into the real-looking clouds above. In a final dramatic touch, a strobe light effect in the clouds helps convince any child — and maybe even some adults — that the letter has definitely turned into air mail.

Does the letter finally get to Santa? Well, within a few days every child who sends off a letter via the North Polestail Service receives a direct reply from Santa at home.

"We think children are going to be just enchanted by this delightful new holiday feature," says Marketing Director, Karen Fox. "Part of the appeal is that they get to do so much themselves. They write the letter, mail it and then enjoy the thrill of watching their own message to Santa speed off to the North Pole. We think parents will love it, too."

Christmas Holiday Concert at Briarwood

The Ann Arbor Concert Band in its fifteenth season presents a Christmas Holiday concert conducted by Jeffrey Campbell at Briarwood Mall, Saturday afternoon, December 18, 1993 at 3:00 p.m.

The program features "An Irving Berlin Christmas" and "Selections from the Nutcracker Suite, Op. 71a" by Tchaikovsky, and is highlighted by a Suite from the "Messiah" by G.F. Handel.

There will also be a variety of holiday music including traditional Christmas carols to get everyone in the mood.

If you're out shopping or just want to hear a little bit of Christmas cheer, stop by Briarwood Mall Saturday, December 18th at 3:00 p.m.

The band will present a series of concerts this year featuring high school talent, a children's special concert, and a springtime concert spotlighting the winner of the AACB Young Soloist's Competition. Coupled with the November, 1993 Huron High School Concert and the Christmas Concert at Briarwood Mall, this is our most ambitious concert offering ever!

Additional information on this concert or other concerts, or about the band is available from the Music Director, Jeffrey Campbell at (313) 484-0033.

Santa Paws is coming to town



You better not nip. You better not growl. You better not hiss, and you better not snarl. Santa Paws is coming to town.

Yes, that's right, Santa Paws — a unique holiday fund raising event sponsored by the Humane Society of Huron Valley to aid Washtenaw County's homeless animals.

Pet enthusiasts are invited to accompany their pet to a special photo session with Santa Claus himself upon his arrival in Washtenaw County in December. A photo of your pet and Santa will add a special touch to the joy of the holiday season — especially since all proceeds will benefit the Humane Society of Huron Valley.

Photo taking sessions with Santa will be held at Pet Supplies "Plus" on Plymouth Road in Ann Arbor on Saturdays, December 4th and 11th. You must schedule an APPOINTMENT with Santa between the hours of 10 A.M. and 6 P.M. on either Saturday.

Photographs are being offered in two sizes and in three different packages with the following price ranges: one 3" X 4" photo for \$7, two wallets for \$7, or \$12 for all three photos.

Don't miss the chance to share the holidays with your pet in a unique way and help all the homeless shelter animals at the same time.

Santa requests that all dogs be on a LEASH and all cats, rabbits, and guinea pigs be transported in a secure CARRIER.

This is also the perfect opportunity to donate a special holiday gift to the animals at your county's only humane society. Bring a bag of puppy or kitten food, canned cat food, kitty litter, or a special toy to place in the donation barrel, or just make a purchase for the shelter animals right there at the store.

For further information or to schedule an APPOINTMENT with Santa, call (313) 662-5585, ext. 103, Monday through Friday.

THE MANCHESTER ENTERPRISE

The Center of the Universe

126th Year — No 7

Manchester, Michigan

35¢ per copy

Breakout

If you don't think this issue affects you, it does...it will.

There are not any banners. There is no need for charter buses — the event is conveniently located in town.

There aren't any gold and maroon footballs in store windows; there are posters: in downtown area merchants' windows, banks and The Enterprise office. Announcements have been sent by the school district to every household in the Manchester area.

It is the event that surpasses in importance the trip to the Silverdome. It is the event that begs the attention of the community. At stake, not a trophy, but lives.

It's the "Breakout" Drug Education Program being presented at the high school this Thursday evening, December 9, at 7:00 p.m.

"It is important for prevention education programs to find a balance. If you're going to educate our young people, educate the parents (—and the community) as well!" — Rand Institute

The above quote is the focus of substance abuse services everywhere. It's an approach in drug prevention that utilizes and unites the community in cooperation with the schools. Community-based programs rather than just a school program -- or just a parent/student program -- involves and emphasizes a spirit of cooperation. It is powered by that sense of community.

The Program

"Breakout" is a drug education program produced by

Cornish Productions of Battle Creek, presented to the adults of the community one evening (that one evening for Manchester is this Thursday, December 9 at 7:00 p.m. in the high school auditorium) and to middle and high school students the next day.

The presentation on Thursday evening provides adults with information.

The presentation at the high school on Friday provides students between the ages of 11-19 with a solid, educational foundation surrounding the issues of alcohol and drug abuse; provides the student with a realistic view of the progression and consequences of substance abuse; provides students with an opportunity to discuss their questions and concerns.

In last week's Enterprise we printed the results of a survey released by the Manchester School District newsletter. The newsletter stated:

"It is critical that the parents and community work together to help our young people understand the risks of drug use, alcohol and newer concerns about inhalant use."

Results from the survey, conducted by Western Michigan University, revealed that Manchester's 8th, 10th and 12th graders exceed the national averages in their use of inhalants, (20.3% of 8th graders, 31.6% of 10th and 19.4% of 12th); and, exceed the national averages in their use of alcohol (50.7% of 8th graders, 78.2% of 10th, 96.8 of 12th.)

Other data revealed that only 43.2% of the 8th graders, 38.6% of the 10th and 24.2% of the 12th graders believe that there is a risk involved in "frequent" or "heavy" use of alcohol.

What parents and the community can do

Attend the program Thursday evening. Show the children of the community that we not only support our football program, but also all the children.

"We cannot preach about drug education to our children then — as a parent, as a community — not get educated ourselves."

Coach Wes Gall Class C Coach of the Year

by Marsha Johnson Chartrand

Tuesday evening's Sports Recognition banquet was highlighted by Athletic Director Dave Swanson's announcement that Coach Wes Gall was named Michigan's Class C Coach of the Year.

How does our town's newest celebrity react to his fame? "Well, I haven't thought about it much," Gall remarked. "It is an honor that a coach gets because of the players on his team. If the team is successful, the coach gets recognized. He may be doing the same things he has done in the past with other teams, but because this particular team gets to the state tournaments, it becomes noticed. It is a credit to the team, really."

"It is quite an honor." Wes Gall has been coaching football in Manchester since 1976. Prior to that, he spent one year as JV basketball coach here, and one year in Saline as Freshman Football and Baseball coach. His achievement is the culmination of many years of hard work and dedication to our teams.

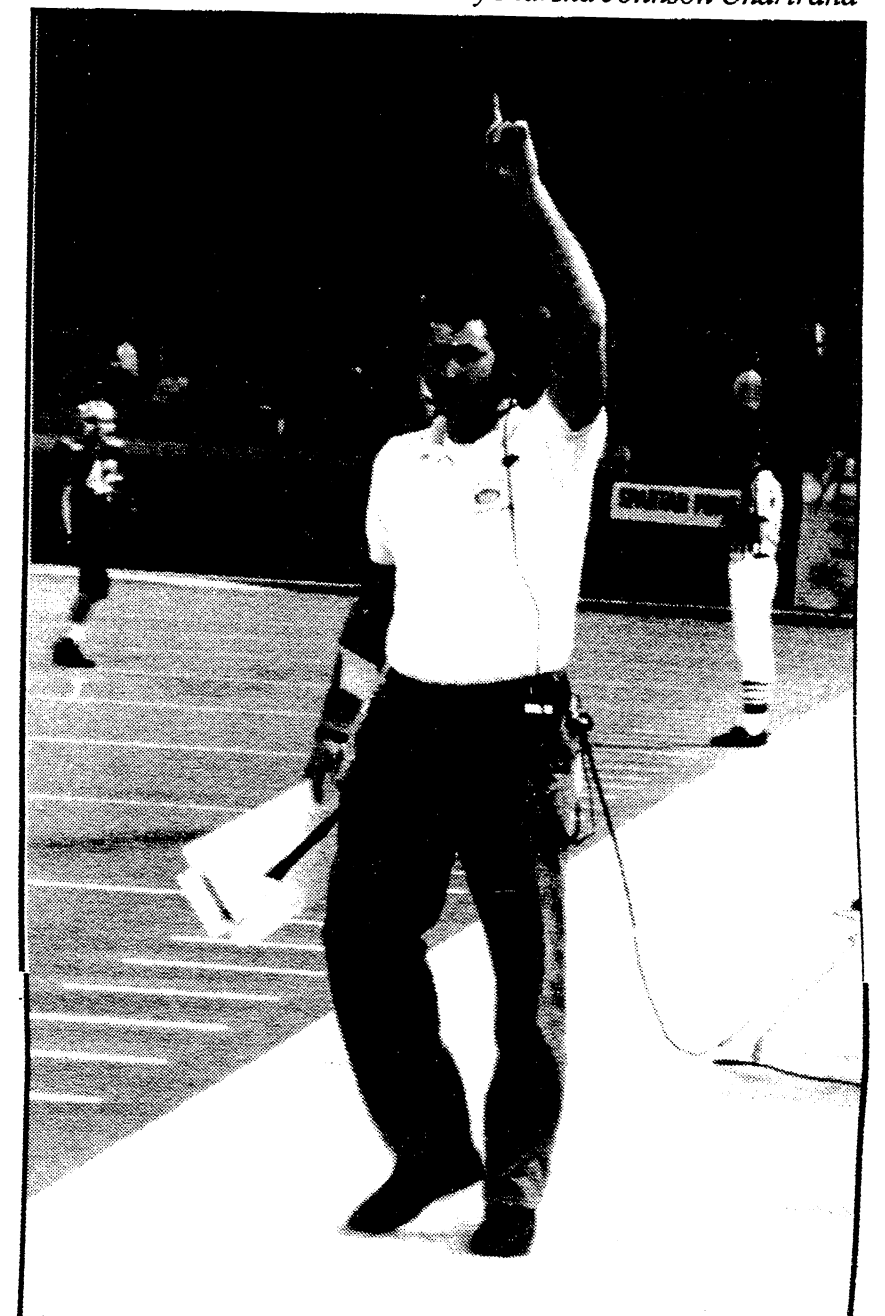
Wes graduated from Saline High School and attended Washtenaw Community College for two years, graduating from Albion College.

How does he feel about our 1993 Dutch? "We had a real nice season. There are a lot of great kids. I hope some of them are able to play football in college, but their education has to come first. I keep telling them that; I hope they're listening."

As for plans for the 1994 Dutchmen, Wes indicates that we have only 10 seniors returning next year. "It will take a lot of work, but we have a good solid nucleus. [The upcoming juniors] need to get into the weight room, and firm up. We have a lot to build on and need to get stronger. They will discover there is a lot more wear and tear in a varsity vs. a JV season."

"We do need to develop our strength and speed. Replacing Tom at quarterback will be a challenge for Troy Niehaus. It will take some time, practice and commitment on his part.

"The offensive line needs to be rebuilt. Five out of our six players will be replaced next year. Andy Winzenz will be our only returning starter. Our wide receivers were all seniors - we will need to get these kids ready; and it's not an easy task. The underclassmen will learn a lot. Defensively we will be replacing a slew of players. Ten players



will be replaced, our most ever. "The two teams in the league who will provide us a challenge will be the second and third games of the season - Addison and Napoleon I see as the strongest opposition we will face, and that will come early in the season for us."

Everyone has seen Coach Gall's biggest victories and their biggest disappointments. They have been a matter of public notice. What about the little victories, and the little disappointments that he has faced with this team? "Disappointments? I hate injuries. When Jeff Brooks was injured for the second time at the end of the season, it really hurt me. He was really coming

on and his running style would have been extremely important to the team."

The little victories: "I think that would have to be the number of times the second and third teams got to be able to play. This is a credit to our first string team; they could get a game in control then stand on the sidelines to cheer on their teammates. It isn't easy for a first team to play four whole quarters. The fact that the second and third teams got to play so much was pretty neat."

All of Manchester has much to be proud of in our team, our coach and our town. Congratulations to Coach Gall and the 1993 Dutchmen for all their many accomplishments this year.

Inside This Issue

School Notices.....	Page 2
2nd Front Page.....	Page 3
Op/Ed Page.....	Page 4
Senior Citizens.....	Page 5
Church News.....	Page 6
Christmas Tree's.....	Page 8/9
Local Government.....	Page 10
Santa Arrives.....	Page 11
Fall Sports Awards.....	Page 12
Classifieds.....	Page 14

BRIARWOOD
Better Than Ever

IT'S HERE. THE PERENNIAL SEARCH FOR THOSE OUT-OF-THE-ORDINARY, IMPOSSIBLE-TO-FIND HOLIDAY GIFTS. OH THE JOY OF GIVING, THE JOY OF RECEIVING, AND THE JOY OF CUSHIONED SOLES. RELAX. WE'VE GOT OVER 130 GREAT STORES WITH EVERYTHING FROM TIMELESS TREASURES TO REALLY HAPPENING STUFF - ALL UNDER ONE ROOF. SO IF YOU HAPPEN TO RUN INTO A RED CLAD, JOLLY SORT OF FELLOW, TELL HIM THANKS BUT YOU'VE GOT IT UNDER CONTROL.

HUDSON S., JACOBSON'S, JCPENNEY, SEARS AND OVER 130 OTHER GREAT STORES AND SERVICES. 1-84 AT STATE ST., ANN ARBOR. EXTENDED HOLIDAY HOURS BEGIN NOVEMBER 26. DEPARTMENT STORE HOURS MAY VARY. (313) 761-9550.

Please deliver this copy to THE MANCHESTER ENTERPRISE
Manchester Township Library
P.O. Box 540
Manchester, MI 48158