

Elk
continued from page 13

enforcement efforts and enlistment of public support. Elk habitat improvement programs were intensified. Cooperative planning for hydrocarbon development also helped the herd expand to an estimated 720 elk in 1980.

Beginning in 1981, the DNR began developing a management plan with a goal of "a viable elk population in harmony with the environment, affording optimal recreational opportunities."

A split season for elk hunting was established in 1988, 1989, 1990, and 1992, although this may not be necessary every year. September and October hunts were needed in those areas where it was difficult to attain hunting access to elk in December. The early hunts were also designed to remove elk on private agricultural lands.

The desired elk range is a discreet unit in parts of Cheboygan, Otsego, Presque

Isle, and Montmorency counties. Elk outside of this area are not desired because of potential crop damage and difficulty in controlling herd numbers.

Although the elk management program is not designed to emphasize trophy animals, several spectacular bulls have been taken by hunters. The dressed-weight record for a bull was established in 1989: 790 pounds, field-dressed; two 1989 elk were aged, by cementum layers in teeth, to be 22-1/2 years of age.

Elk calves are born in late May and early June. The usual birth is a single calf, with twins being very rare. Calves weigh about 25 to 30 pounds at birth.

Cows stay apart from other elk until the calf is two to three weeks old. Then, cows, young bulls, and calves gather in groups. In some cases, a few cows may act as "baby sitters" and watch as many as 20 calves, while their mothers graze elsewhere.

Mature bulls spend the early summer in small groups of five or six. In August, bulls polish their antlers and are ready for the breeding season or "rut" in September. Bulls form "harems" of 5 to 20 cows and drive off young bulls. Dominant bulls have larger harems than bulls who are weaker. Bulls make a low whistling sound or "bugle" during this time to challenge other bulls and to note their territories. Breeding in Michigan ends in October.

After the rut, elk form large wintering groups. Elk seem less susceptible than deer to winter starvation. Elk are about four times the size of deer and are less restricted by heavy snow.

The Michigan elk herd, unlike many western states, contains a high percentage of bulls in the fall. In some years, more than one-third of the fall herd may be antlered bulls. This high proportion of bulls creates much summer enjoyment to forest visitors in northern Michigan.

Elk viewing is especially good in mid-September when elk are bugling and forming harems.

Recreational hunting of elk should be continued on a carefully controlled basis to keep elk in balance with their range. Hunting seasons in 1993 will be designed to help meet that objective. The DNR will continue to consider the interests of agriculture, forestry, tourism, and nonhunting wildlife enthusiasts in managing elk to attain the goal of a "viable elk population in harmony with the environment, affording optimal recreational opportunity."

—Wildlife Division
Michigan Department of
Natural Resources

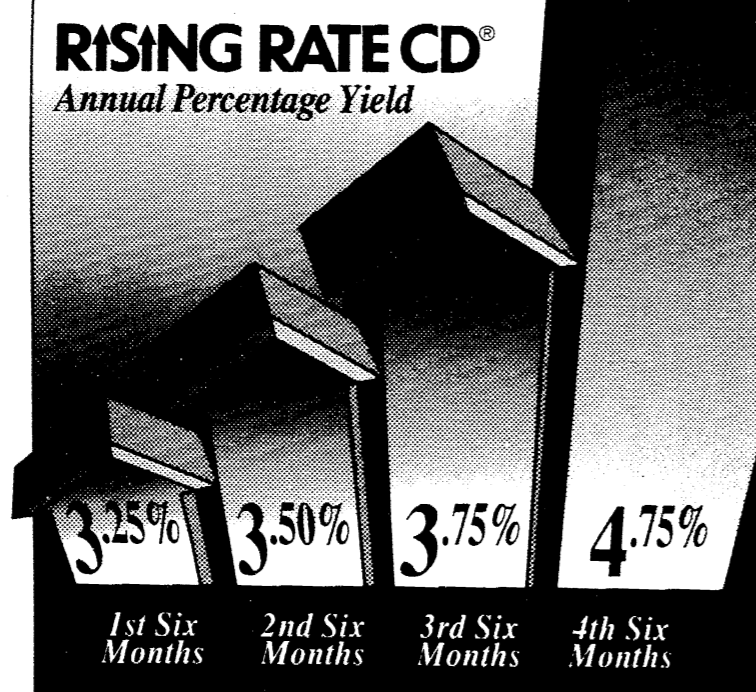
BACK DOOR PARTY STORE

500 Ann Arbor Street • 313-428-9287 • Manchester

Squirt, Diet Squirt,
7 UP & Diet 7 UP
12 pack cans
\$2.79 plus deposit

Store Hours:
Mon-Thur-6 a.m.-9:30 p.m. Friday-6 a.m.-10 p.m.
Saturday-7 a.m.-10 p.m. Sunday-7 a.m.-9 p.m.

**Lock up a rising rate with
a CD that won't lock you in.**



A guaranteed rate increase with a no-penalty withdrawal option every six months.

Whichever way interest rates might go, the Rising Rate CD is a smart investment bet. Because if interest rates remain flat or drop, you'll still get a guaranteed raise in your CD rate every six months. But if interest rates begin to climb, the Rising Rate CD gives you the liquidity to pull out once every six months of its initial two-year term without penalty.

The rate earned for each six-month period rises as the chart above indicates, climbing to a 4.75% APY during the final

six-month period.* You have the option of withdrawing all of your investment within the first ten days of any six-month interval during the initial two-year term without penalty. Or you can take out any portion of it as long as a \$1,000 balance is maintained.

The Rising Rate CD. The liquidity you want, the guaranteed interest growth you need. To open yours for as little as \$1,000, call or visit any participating bank office.

FIRST OF AMERICA
A bank for life.™

*A penalty may be imposed for early withdrawal other than periods stated above. At the fourth maturity, your CD will automatically renew as a two-year CD. Annual percentage yields shown above reflect the yield for each six-month period separately, and are not cumulative yields. Deposit limits apply. Individuals and sole proprietors only. Rates good as of 10/31/93, subject to change without notice. Limited time offer available at participating banks only. Equal Housing Lender. Member FDIC. If hearing impaired, TDD available from 9-5 EST at 1-800-289-4614. For information, call: 1-800-735-0034

Fond Farewell to
Mae and Jon
page 3

Key Club Costume Judging
Photos pages 6 & 7

Forum on Education
by Martha Stoner
page 12

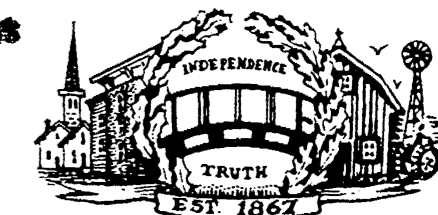
Manchester United Way
pages 10 & 11

THE MANCHESTER ENTERPRISE

The Center of the Universe

MOST VOTED
FOR
LIBRARY USERS

Thursday, November 18, 1993



126th Year — No 4

Manchester, Michigan

35¢ per copy

Flying Dutchmen Soar Over the Eagles



The Dutchmen hold aloft their helmets in celebration after defeating Schoolcraft for the Region championship last Saturday afternoon. The Dutch play in the semi-finals this Saturday; the winner goes to the Silverdome. — Photo by Kathy Kueffner

STATE SEMI-FINALS
Manchester vs
Brown City
SATURDAY
November 20,
1:30 PM at
Lansing Sexton
High School
Wear your
maroon &
gold!

see Karen Strock's
play-by-play and more
information about
this Saturday's game
pages 16 & 17

Johnson Controls Holds Ground-Breaking Ceremony in Manchester

Johnson Controls Plastics Technology Group had a ground-breaking ceremony for its \$5 million, 88,000-square-foot technology center Monday morning. The event was held at the future site of the building which is directly adjacent to the Johnson Controls Plastics Machinery Division site at the Manchester Industrial Park on M-52. Officials from the Village of Manchester, the State of Michigan and Johnson Controls were in attendance.

The new building will house 90 employees and create 30 to 40 new jobs in Manchester. Slated for completion by mid-1994, the center will include research laboratories, offices and a training center. The facility will enable Johnson Controls to expand technologies relating to plastic container design, new packaging applications, plastics recycling and packaging source reduction.

Johnson Controls Plastics Technology Group has more

than 3,000 employees at 37 locations in North America and Europe. Its parent company - Johnson Controls, Inc. - is headquartered in Milwaukee, Wisconsin and is a global market leader in facility management and control systems, automobile seating, batteries and plastics. According to senior officials at Johnson Controls, the new center reflects the company's commitment to technology development and doing business in Michigan.



Left: John Granada, Director of Research and Development Johnson Controls; center, Doug Rothwell, CEO Michigan Jobs Commission; right, Larry Bechtel, Village president at the ground-breaking ceremony held Monday morning for the \$5 million, 88,000-square-foot technology center in Manchester's Industrial Park

This weekend in town: the
Manchester High School Play
Friday night and Sunday
afternoon -- page 9 for details
and



Saturday 9 AM to 4 PM

Please deliver this copy to THE MANCHESTER ENTERPRISE

Manchester Township Library
P.O. Box 540
Manchester, MI 48158

From The Ground Up

—by BG

We are entering the time of year when more gardening is done inside the house. Growing plants are more important in the house during the winter for enjoyment, beauty, higher humidity and cleaner, purer air.

Success comes with house plants when the plants are chosen with the particular condition and location in mind. Never try to change the plant's requirements, change the location or choice of plant. No matter what conditions, a possible house plant can be found.

Do you have room to display plants in the sunny window? Are the plants to go in a north window? Does the chosen spot for plants have minimum light? Does the space call for a hanging plant, a large or a vertical form?

Flowering plants require sunshine which means a south or east window. Foliage plants can be found for any location.

One way of having your flowers without much sunny exposure would be to give those plants a periodic stay under a fluorescent light. One shop light could supply light for five or six large plants during the winter and provide an opportunity to

raise seedlings in the spring. The light could be hung in an out-of-the-way spot with warmth and ventilation such as the basement, laundry, under the stairs, furnace room, a large closet or storeroom.

Make an effort to understand the origins of the plant. Geraniums (Pelargonium), having originated in a sunny, rocky South African region with a sporadic rainfall, will do well in the sun in a crowded pot with the soil becoming almost dry between watering.

If the proper plant is put into the proper location, it should flourish. The only danger will come from incorrect watering, usually this means over-watering.

Know either your present plant's needs or the conditions for the location of the future plants. A good basis of information for the requirements of your house plants is the source of your plant. If the plant flourished for your neighbor, duplicate the conditions. If the plant was purchased, ask the salesperson for the proper requirements. Shop for your house plants as you do for your clothing, aim for a good fit.

Wacker's General Store



Wacker's General Store, on the corner of M-52 and Pleasant Lake Road has Homemade Ice Cream on special just in time for after school snacks.

Regular price is \$ 3.99, Special is \$3.29 for a 1/2 gallon, and it comes in 3 kinds; 13 flavors of ice cream like Cherry Cordial, Peanut Butter n' Chip, Pecan Praline, etc; 5 flavors of Yogurt such as Red Raspberry and Milk Chocolate; and 6 flavors of Light, including English Toffee n' Chip and Caramel Pecan Fudge.

Think Christmas! Order Fruit Baskets Early!

G.E. Wacker Inc.

Gasoline • Fuel Oil • Greases
Motor Oil • Diesel Fuel
9050 Chelsea-Manchester Rd.
Manchester, Mi. 48158

WINTER HOURS

Monday - Thurs. 7am-8pm
Friday 7 a.m. - 9 a.m.
Saturday 8am-9pm
Sunday 9am-8pm

It takes a great man to make a good listener.
—Sir Arthur Helps

THE MANCHESTER ENTERPRISE

109 East Main Street
Manchester MI 48158
(313) 428-8173
USPS No. 327-460

The Manchester Enterprise is published each Thursday at 109 East Main St., Manchester, MI 48158, with second class postage paid at the Manchester Post Office.

POSTMASTER: Send Form 3972 to: Manchester Enterprise, P.O. Box 37, Manchester, MI 48158.

The Manchester Enterprise, Inc.

Editor & Publisher
Emory Garlick
Associate Editor
Kathy Kueffner
Front Desk
Lanetta Aldrich
Display Ad Manager
Debbie LaRock
Contributing Writers
Martha Stoner
Marsha Johnson Chartrand
Karen Strook
Angie Carlson

One-year subscriptions are \$15 within Washtenaw County, \$18 outside the county.

Deadline for display ads, photos, classifieds and news articles is Monday at 3:00 p.m.

© The Manchester Enterprise 1992. No part of this publication may be used without the written permission of the publisher.



Work on the Men's Club Pavilion in Chi-Bro Park continues. Members pictured above who were shingling the roof: Jerry Ahrens, Scott Mester, R.D. Scott, Pat DuRussel, Mel Shrope and Tom Pratt. - Photo courtesy of Dave Kemner

HAPPY BIRTHDAY, DAD



WAYNE GARLICK —
the best father, grandfather and great-grandfather in the whole wide world!
88 years YOUNG on November 18, 1993!
I love you, Emory

McLennan Landscape

A personalized professional service

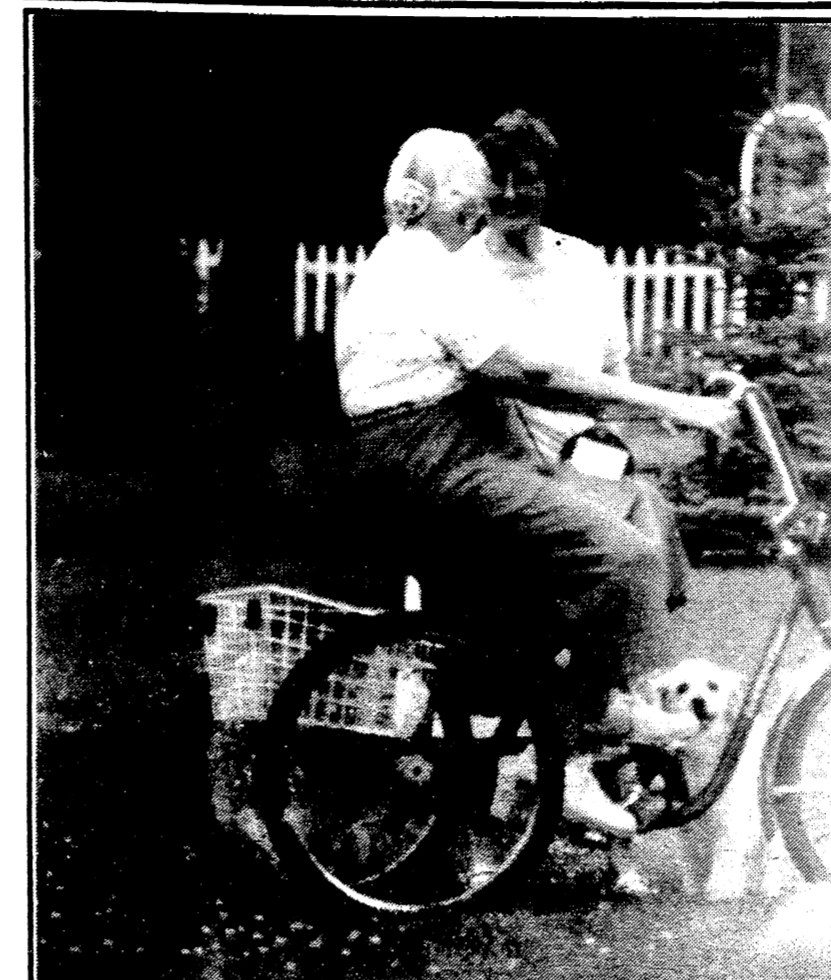
- Design Consultation
- Plant Installation
- Retaining Walls
- Wild Flowers
- Finish Grading
- Rototilling
- Hydro Seeding
- Brick Pathways

(313) 428-7005

The MANCHESTER ENTERPRISE

Second Front Page:

"Fare Thee Well," Mae and Jon



Pictured: Mae Hardenbergh with her good friend Gail Curtis, (the author of the beautiful tribute to Mae and Jon below) chatting at a summer Gazebo concert

Mae and Jon Hardenbergh leave soon for Dubuque, Iowa and Manchester will be both "sadder and wiser"; bereft in many ways but richer simply from the fact of their having lived among us. We have been witness to rare courage and determination pitted against great odds; to devotion, patience and loyalty under great stress. Vir-

tuces all - and if in the privacy of home courage and patience have faltered, then let it be noted that the good humor with which they face the world is all the more remarkable.

Guiding and directing all their actions has been the persistent parental vision glimpsed thirty years ago in the face of the diagnosis that Jon suffered from



In July 1991, Jon moved his photo shop to a new location on Main St. and members of the then 9th grade class, under the supervision of John Williams (standing behind Jon), helped.



A going-away party was held at the Manchester United Methodist Church last week. Many, many friends came by to visit with Mae and Jon during the afternoon.

a rare malady with no known cure and that inevitable physical degeneration would follow. Life for Jon could have meaning and significance, the vision claimed, if they could facilitate the necessary freedom and experiences to foster growth of mind and spirit - at whatever sacrifice. They accepted the challenge and the drama has been played out upon our little stage.

Few among us have not been humbled by some fleeting insight into that vision and the commands it made on Roger and Mae - and recently since Roger's death six years ago, upon Mae alone. An old adage, fre-

quently quoted of late, is: "It takes a whole village to raise a child". So perhaps some of the credit is due the town for its part in encouraging and supporting the rolling, roving shutterbug who has captured on film whatever of the essence of our village has fallen within his camera range.

But lest we rest idly upon our laurels, let's see what we can learn and ask some of the questions begged by the Hardenbergh story and our experiences. Teenagers today, facing a very different world than we (or their parents) knew, need to feel that life can have meaning, that individual lives can be significant and also that fulfillment requires

courage and perseverance whatever the odds. The trick must be to recognize and give our children new role models to light their way and also to facilitate the opportunities and experiences that will insure their growth along their chosen paths.

In fact, it does "take a whole village to raise a child" — and perhaps the Hardenbergh legacy to Manchester is their story that testifies to its wisdom and truth.

So, we send Mae and Jon on to their new adventure with our blessings and our smiles and a message to Dubuque (aptly phrased by William Shakespeare): "The robb'd that smiles steals something from the thief."

FUND RAISING

Manchester Sportsman Club
8501 Grossman Rd.
Friday 6:45 p.m.

Manchester American Legion
203 South Adrian
Saturday, 7:00 p.m.



Jon is pictured above congratulating his good friend coach Wes Gall after last year's championship win.

A train of thought is only as good as its engineer.

YOUR HOMETOWN FULL SERVICE GARAGE

MIDWEST FORD
428-8343 • 510 W. Main
M-F 7:30-5:30

Motorcraft Fast Lube-15 minute oil change

(No appointment necessary)

Warranty Repairs, Factory Equipment, Parts, Certified Mechanics, Oil Change Club

FORD QUALITY CARE Don't forget a portion of your sale goes to our scholarship fund! Where the Quality Continues Enjoy a little Midwest Magic!

Clip and Save! Save this ad so you will know where to call for service for your vehicle.

PREMIER CONTRACTING INC.

Full Service Residential Building & Remodeling
"Let us help you with your building plans"



Lots Currently Available

Ron Milkey
(313) 428-9826

Editorial / Opinion

To the Editor:

For a year and a half, we have been involved in efforts with the Manchester Township Board to prevent a Paid-for Hunting business operating in our neighborhood. Petitions were signed supporting these efforts. Neighbors also called in, hoping to emphasize their objections to this business.

This business operates on an 8 acre parcel. It is 100 ft. from ours and another neighbor's property. Trespassing has occurred by hunters and dogs retrieving downed fowl.

Our horses' safety is affected as their pasture borders this property. Our children may not ride or play as we never know who is on this property and cannot take the chance they could be hit by a stray bullet.

It has been frustrating dealing with the Manchester Township Board due to foot dragging and lack of follow up. Being bounced from the Board to the Planning Commission has been hard also.

Ron Mann, the township supervisor, has not dealt fairly with us. A week before a key meeting with the Planning Commission, Mr. Mann appointed Jim Samonek to the commission to replace a vacancy.

Jim opposed our efforts at a summer meeting, and currently has several sites leased out to these businesses.

This key meeting was to decide on city attorney recommendations and other options and advise back to the board.

Mr. Samonek, at this meeting, felt that any action by the township would be futile or problematic.

It was brought to chairman Bob Kellum's attention of a possible conflict of interest. Objection was raised as to the fairness of allowing a vote by Mr. Samonek. It was suggested that Mr. Samonek consider refraining, but he refused. At that point Jim moved to recommend back to the Board that nothing be done. A vote was taken and this recommendation passed on a 3-2 margin. It might be noted, that a vote for and one against was made by two other members who rent their property out to hunting.

The Manchester Enterprise welcomes letters to the editor, guest editorials, your comments, suggestions and opinions.

Letters must be signed and, unless special consideration is warranted, only those letters with valid signatures attached will be considered for publication.

The Enterprise reserves the right to edit letters.

After our experiences, it is our hope that Ron Mann does not run uncontested in the next election. It would be nice to see someone elected who is even-handed and tuned to local residents' needs.

One wonders how fair review can take place when interpretations of the Manchester Zoning Ordinance are arbitrary and partial.

It has been hard writing a letter to air dirty laundry. But the quality of life in the township is affected by what goes on at these meetings along with ordinances written in zoning. We still believe in the greatness of this community and that it is one of the best kept secrets around. We urge all to get involved and be informed to keep it that way.

Chris and Vic Kanta
Noggles Road

Out & About *by gar*

I just returned from lunch and crossing the bridge and dam. River Raisin cruises so steadily thru its path and Manchester's domain that we seldom consider its past or presence.

Do you wonder where it starts and where it ends? Does it really matter? No, hardly, as River Raisin is relatively new speaking from the origin of the Universe.

Have you noticed a few of the things about the river as the waters spill over the dam. The water levels vary season to season. High in the spring and low in the summer. Water growing plants cling tenaciously to the concrete the dam builders placed.

Coins thrown from the bridge can be seen in the water. Today I observed quarters, dimes, nickels and pennies gleaming in the sunlight of this beautiful fall day. I have wondered why people throw coins into the water. I have done it and have seen small children beg for coins to throw into the water. What is it, in the recesses of human kind that wants to cast coin upon the water?

Is it some kind of superstition? Something to do with luck? Maybe it is just to see how close a coin can be pitched so that it is close to the edge of the dam without going over. Maybe it is just part of human nature.

Whatever the reason isn't it a wondrous thing that the river flows. It started even before my time on earth, some say I have been here forever, and it will continue well after I am gone. That is heartening and beautiful!

The river is like life. It goes on and yet as each drop passes over the dam it hopefully regenerates and returns again.



November 11, 1993 — Veterans' Day: The Ladies Auxiliary of the American Legion in cooperation with Emil Jacob Post #117 sponsors the flag program. Begun in 1967, the program provides flags along Main Street on such occasions as Veterans' Day. Christmas lights were strung in the village last week thanks to Tom Kladzyk of Holiday Lighting of Manchester, Stein Electric for the use of their bucket, Manchester Electric, volunteers from the community, all coordinated by the Manchester Chamber of Commerce.

From the Heart

by Ken Moull-3rd in a Series

Well Folks,

This week I'm going to tell you some of the new things from Ford this year and next.

Of course, the Big news for 94 is the all new Mustang and the all new Aspire.

The Mustang has an all new look for 94, and will feature the 3.8 V6 as the standard engine. This will give it a lot more pep and of course the 5.0 V8 is still an option. Also this year there will be a removable hardtop option for some models; now that brings back memories.

The Aspire will be an all new car for 94, slated to replace the Festiva.

This year the F150 and F250 light duty pick ups feature a standard driver side air bag.

Do you realize that all 94 vehicles from Ford come with a Roadside Assistance Program.

If you run out of gas or get locked out of your car for example, you have a 24 hour toll free number to call, and Ford will send you help free!

How's that for staying number one?

Ford also provides certification tests for dealers who want to make sure that their salesmen are very knowledgeable about the number one line of vehicles in the country.

This is not mandatory; but it separates the dealers who really care about providing the right vehicle to fill the customer needs and wants from those who don't care. I am proud to say that we are all certified here.

At Midwest we also received a distinguished service award from Ford; which only a very small percentage of dealers in the country have won.

Very few large dealers ever receive this award. I think our award and our certification tests are a testimony that Midwest wants to be the best. It's not easy but we're trying.

By the way, for 94 even your exterior light bulbs will be covered under warranty.

Also, I want to thank the people who have responded to my article, it's given us some insight into what it takes to be your dealer and that is what we want; so please keep responding.

MIDWEST FORD

510 W. Main,
Manchester • 428-8343



Manchester Village Planning Commission Regular Session October 12, 1993 Synopsis

Roll Call: Present: Way, Roberts, Lowery, Hinkley, Schiller, Tucker, Gleason

Absent: Palms and Little
Also Present: Michael Gordon, Jeff Wallace, Jeff Fahey, Dick Fahey, Judy Fahey, Deborah Birch

CCall to Order: The meeting was called to order at 7:37 by Chairman Way in the Council Room of the Village Hall.

Approval of Agenda: A motion was made by Schiller to approve the agenda. Tucker seconded the motion. The motion passed on a voice vote.

Minutes of Previous Meeting: Hinkley made a motion to approve the minutes. Lowery seconded the motion. The motion passed on a voice vote.

Reports from Administration, Council, Commissioners & Public: The Commissioners received an invitation to attend an open house at Victory Baptist Church.

Commissioners also received an invitation to attend a

Washtenaw County Planning Commission meeting.

Wallace presented an update on the Palms rezoning issue and noted Council decided the fee could not be negotiated.

Wallace also updated the Commission on the parking issue concerning Dr. Eccles office.

The Commission was informed of Council's decision to increase the compensation for Commissioners.

New Business-Haarer's Meeting Place Sign: At issue is the size and number of signs.

Hinkley made a motion to permit three signs: the 'HAR' sign above the window, the new sign above the door, and the moving of the existing above door sign to the west side of the building as per Village Code Article 51 (3)(a). Schiller seconded the motion. The motion passed on a voice vote.

Dairy Queen Site Plan Review: Combined preliminary and Final-

Commissioners also received an invitation to attend a

The petitioner would like to add a second story onto the present building for the purpose of storage. Way made a motion the petitioner apply for the proper variances (lot width (22.30 ft. instead of 100ft), lot area (2,800 sq.ft. instead of 20,000 sq. ft.), east side yard setback (0 ft. instead of 10 ft.), and parking (2 1/2 instead of 5 parking spaces). The Combined Preliminary and Final Site Plan approval is contingent on approval of the above variances by the ZBA. Hinkley seconded the motion. The motion passed on a voice vote.

Outstanding Business-Code Book Review: The planning commission is continuing Code Book review

Adjournment: A motion was made by Lowery to adjourn the meeting. Roberts seconded the motion. The motion passed on a voice vote. The meeting adjourned at 9:38.

Susan Gleason
Recording Secretary

LOCAL GOVERNMENT Work Session Freedom Township Planning Commission Tuesday, Nov. 30, 1993

The Freedom Township Planning Commission will conduct a Work Session at the Freedom Township Hall on Pleasant Lake Road at 8:00 p.m., November 30, 1993 to Discuss a potential proposal on Esch Road.

The public is invited.
Bob Miller, Secretary
Freedom Township Planning Commission

PROPOSED SYNOPSIS of the Regular Meeting of the Manchester Township Board held November 8, 1993:

The meeting was called to order at 8:01pm with members present: Widmayer, Macomber, Hakes, Mann, Turk. Absent: none. There were no visitors.

The Board approved the minutes of their last meeting and accepted the minutes from the Western Washtenaw Recycling Authority.

Bills paid since last meeting were reviewed. The Treasurer's report was accepted. An amendment was made to the budget. Bills totaling \$4959.14 were approved for payment.

Fire Department activity for the month of September was as follows: Fire- 1, Medical- 10, Personal Injury- 3, Mutual Aid- 0. Truck 702 (involved in a rollover accident in January 1993) is still being repaired.

Lyle Moore has returned from medical leave. His reports for October and November were accepted.

Sybil Kolon was appointed as representative to the Western Washtenaw Recycling Authority for a two year term, and Ron Mann was appointed as alternate. The township still needs a representative to the Washtenaw County Consortium for Solid Waste Management. Any interested parties should contact the office. Approval was given to negotiate details of providing a method for recycling corrugated cardboard within the township through WWRA.

Planning Commission took no action on paid-for hunting, turning the issue back to the township board with no recommendation. The Board will investigate talking with the DNR on their holding a hearing.

A resolution was adopted to comply with Public Acts 167 and 168 of 1993 which require sealed competitive bids for contracts of \$20,000 or more. This requirement shall not apply to intergovernmental contracts, contracts for professional services, or emergency repairs.

Correspondence presented required no action from the Board. There being no other business, the meeting adjourned at 9:45pm. Next meeting of the Manchester Township Board will be December 13th at 8:00pm.

Submitted by Kathleen M. Hakes, Clerk
Approved by Ronald E. Mann, Clerk

ATTENTION!

SHARON TOWNSHIP RESIDENTS

Please recycle your old telephone directories. Place them with your other recyclables inside your BFI or MISTER RUBBISH recycle bags and continue to follow the thirty (30) pound weight limit per bag. They will be picked up between November 1 and December 4, 1993.

Thank you,
Sharon Township Board

11/11, 11/18

Approved Proceedings Manchester Village Council November 1, 1993

The regular meeting of the Manchester Village Council was called to order by President Becketl at 7:00 p.m. Council members present: Becketl, Brooks, Conaway, Gordon, Marshall, Taepke, Vought, Clerk Tucker, and Manager Wallace. Also present: Sgt. Werner, Mark Palms, Shelley Steele and Mark Mignin of Johnson Controls.

The Minutes of the October 18, 1993 regular meeting were approved as presented on a motion by Marshall, support by Conaway. Vote: Ayes-all.

The Proceedings of the October 18, 1993 regular meeting were approved on a motion by Gordon, support by Marshall. Vote: Ayes-all.

The Agenda was approved as amended on a motion by Marshall, support by Vought. Vote: Ayes-all.

Marlin Wilson Letter - The letter from Mr. Wilson, complaining about the street cleaner taking too long in the early hours of the morning to clean Main Street in front of his home, was discussed.

Woodbrook Letter (Jim Achtenberg) - Council discussed the letter received from Jim Achtenberg concerning how the Council spends taxpayers money.

Ypsilanti Twp. Letter - Council discussed the letter received from Ypsilanti Twp. asking if the Village would be interested in participating in a tire recycling program.

Michigan Municipal League Letter - Council appointed Chris Brooks as Local Officials Legislative Coordinator to the Michigan Municipal League.

Mark & Carol Palms Letter - Mark Palms was present with another letter to Council concerning his request for re-zoning. The new letter stated that they no longer are requesting a zoning change.

Letter of Resignation - Becketl acknowledged receipt of letter from Mark Palms and accepted his resignation with regrets.

Treasurer's Report - Motion by Brooks, support by Vought to accept the Treasurer's Report as presented. Vote: Ayes-all.

Accounts Payable - Motion by Marshall, support by Taepke to approve the payables in the amount of \$67,763.29. Roll Call Vote: Ayes-all.

Parcs Commission - Wallace reported that the Men's Club is putting cedar shingles on the pavilion and doing an excellent job. The Parks Commission has ordered playground equipment for Chi Bro Park with the Chicken Broil money.

Old Business
DPW Contract - Motion by Brooks, support by Vought, to adopt the DPW contract as submitted, understanding that section 4B will be reworded with the intent being the same. Vote: Ayes-all.

New Business: Sale of Industrial Land/Johnson Controls
Becketl read from the letter from Johnson Controls offering \$6500 per acre for 13.4 acres at a total of \$87,100. That is less than the Village has in to the land but better than leaving it vacant. Motion by Becketl, support by Brooks, to accept the offer to purchase 13.4 acres of industrial land at \$6500 per acre for a total of \$87,100. Roll Call Vote: Ayes-all.

Motion by Becketl, support by Gordon, to adjourn at 8:50 p.m.
Karen Tucker - Village Clerk



A Good Selection of New and Used Cars On Our Lot

TIRB CHEVROLET & GEO Don't Get Disturbed..See Tirb! A Metro Detroit Chevy Dealer 313-428-8212 • Manchester

CLUBS & ANNOUNCEMENTS

Key Club Halloween Costume Winners

American Legion Auxiliary

The American Legion Auxiliary met at the Legion Home on November 10, 1993 with 22 members and two guests present. The meeting was called to order by President Joanne Schiel. Roll Call was taken by the Secretary and the minutes of the October 13, 1993 meeting were read, corrected and approved.

We wish to thank our special guest Mr. Ted Tapping who gave us a most interesting and informative presentation on the Ronald McDonald House in Ann Arbor. Our Unit has been especially active this year in support of RM House and have, and still are, trying to arrange a tour of same. In the interim however, Mr. Tapping's presentation gave us the awareness of the need for volunteer, financial and material support for this much needed "complement" to Motts Childrens Hospital and the peace of mind it provides to families of these children of critical needs. Anyone interested in volunteering may call (313)994-4442 - a smile from a child could be your reward.

Phyllis Baker announced the good news that we surpassed our quota of 114 - we now have 117 paid members. It is our pleasure to welcome new members Marilyn Knauss, Elizabeth Wallace, Caroline McGraw, Jane Long, Heather Walkowe, Natalie Daubner and Michelle King.

Joyce Stein reported the gifts for the Christmas Gift Shop at V.A. Hospital have been purchased and transported to the Hospital. Our Unit will be travelling to Ann Arbor on Monday, November 29th, to assist patients there in selecting, wrapping and mailing Christmas gifts to family members. If you are able to assist in this endeavor please contact Joyce at 428-8427.

We are also in process of compiling a list of local military personnel for Xmas remembrance. We have collected some new names from articles in the Enterprise but are unable to obtain phone numbers from the local phone book. IF ANYONE KNOWS OF ANY MILITARY MEN/WOMEN AND THEIR ADDRESSES, please contact Joyce (428-8427) or Marilyn (428-8849).

The December meeting will be complete potluck. Bring your own table service and dish to pass. Also, donations of paper products, nonperishable food, hats/mittens, etc., for the Manchester Family Service will be accepted. Our guest for this meeting will be 2nd District President Mildred Kingsley. Looking forward to a big turnout, ladies. Refreshment committee for meeting will be Gerry Mulrenin, Marlene Lentz and Marilyn Minick.

The meeting was adjourned at 9:00 p.m. with a prayer by our Chaplain Vivian Middlemiss.

The Present is a Point just passed. —David Russel



Preschool, ages 3,4,5: Closest to the real thing prize, Superman-Jeff Carver; Grand prize, Cutest, Cowboy with pony-Charlie Desautel; Most unusual prize, not pictured-Cole Walter



First grade: Closest to the real thing, Bee-Ashley Sloat; Cutest, Devil-Ryan Nester; Most Unusual, Werewolf-Scott Crowder



Sixth grade: Closest to real thing, Ghoul-Jason (last name unavailable); Cutest, Gypsy-Katie Okcy; Most Unusual, Soap & Dirty laundry-Nick Gordon & Philip Krall

Humor is a shock absorber on the road to life. —Pats Pups

STEIN ELECTRIC COMPANY, INC.

- Licensed & Insured Contractor •
- 24 Hour Emergency Service •
- Ag. • Commercial • Industrial • Institutional • Residential
- Motor Controls & Lighting

(313) 428-9050

Rick Graustein



Preschool, ages 2 & under: Closest to real thing, Cow-Ellie Senkewitz; Cutest, Lion-Jeffrey Horodeczny; Most Unusual, Pumpkin-Stephanie Steele



Kindergarten: Closest to the Real Thing, Captain Hook-Daniel Lobbestael; Cutest, Butterfly-Allison London; Most Unusual, Wolfman-Benjamin Smith



Second grade: Closest to real thing, Dracula-Joel Knause; Cutest, Butterfly-Ashley Collins; Most unusual, Robot-Moses Cooper



Fourth grade: Closest to real thing, Wednesday Addams-Renee Grimes; Cutest, 50's Girl-Kelsey Johnson; Most Unusual, Veteran-Clint Grenier

CLUB NEWS/ANNOUNCEMENTS

More Key Club Halloween Costume Winners



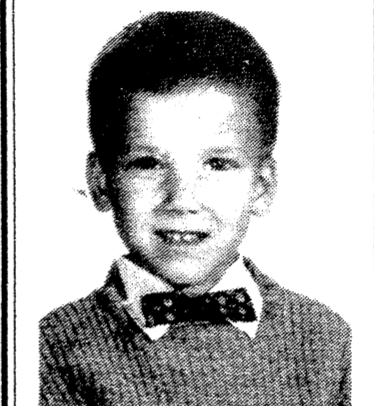
Left — Fifth grade: Closest to real thing, Jester-Shannon Green; Cutest, Cheerleader-Andrew Roberts; Most Unusual, Twin Cows-Jennifer Young and Colleen Boyd

Below left —

Third grade: Closest to real thing, Scarecrow-Dale Becker; Cutest, Witch-Marie Beaudoin; Most Unusual, Pirate-Dara Jose



Happy Birthday OLD Man!!
Love,
Michael



Have a great day, dad!
James

We've got "Elf-Esteem"

Our elves have worked hard to make the



Tecumseh Christmas Open House
a spectacular event!

SAT., NOVEMBER 20
SUN., NOVEMBER 21

Sponsored by Tecumseh's Merchants
(517) 423-3740



YOU'LL FIND IT IN TECUMSEH!

Upcoming Events!

Tecumseh Christmas Parade- December 3rd.

Historical Candellight Tour- December 4th and 5th

SALE

SAVE \$50-\$80 on our entire stock of

MENS SUITS

Priced from \$99.95

SAVE \$30-\$40

All Weather TOP COATS

Priced from \$119.95

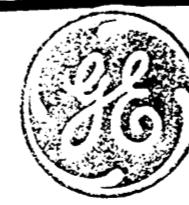
20% OFF on our entire stock

of London Fog & Field and Stream FALL, WINTER & LEATHER COATS

Priced from \$52.



Green's MEN'S WEAR and SHOES
Downtown Tecumseh • 423-2235 • Open Fri. Eve.



National Appliance Savings Days!

CASH REBATES

direct form GE when you buy selected GE Appliances from now through November 29, 1993

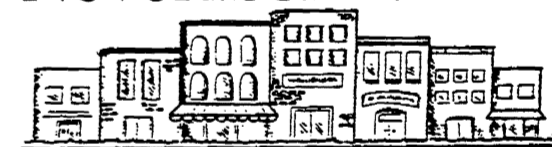
STOP BY TODAY FOR MORE DETAILS AND TO SEE OUR GREAT SELECTION!



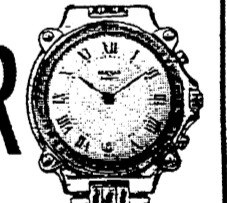
MARTIN'S HOME CENTER

145 W. Chicago Blvd. • Tecumseh • 423-2065

Merchant Christmas Open House November 20 & 21



A PULSAR



SALE SO BIG

IT CAN'T FIT IN
So look today for our special insert, "It's time to take a fresh look at the value of PULSAR."

TODAY'S PAPER

30% off selected styles ending December 24 '93

MASTER JEWELERS

Hacker Jewelers

Award Winning Designers & Goldsmiths
Downtown Tecumseh 423-6370
Graduate Gemologist on Staff

CHURCH NEWS

EMANUEL UNITED CHURCH OF CHRIST

Wednesday, November 17: 6pm Bell Choir, 7pm Church Council, 7:30pm Adult Choir

Thursday, November 18: 9:30am Memorial Committee, 12 Noon Senior Meal, 3:30 Cherub Choir, 3:50 Children's Choir, 6:30 Brownies, 7:30pm Board of Christian Education

Friday, November 19: December Newsletter deadline

Saturday, November 20: 9am-4pm Christmas in the Village Lunch at Emanuel 11am-2pm

Sunday, November 21: 9am Sunday School, 10:30am Worship, Baptism, Strengthen the Church Offering received, 11:30am Fellowship Time, 12 Noon Confirmation Class

Monday, November 22: 5:30pm Weight Watchers, 6:30 Optimists

Tuesday, November 23: 12 Noon Senior Meal, 7pm Boy Scouts

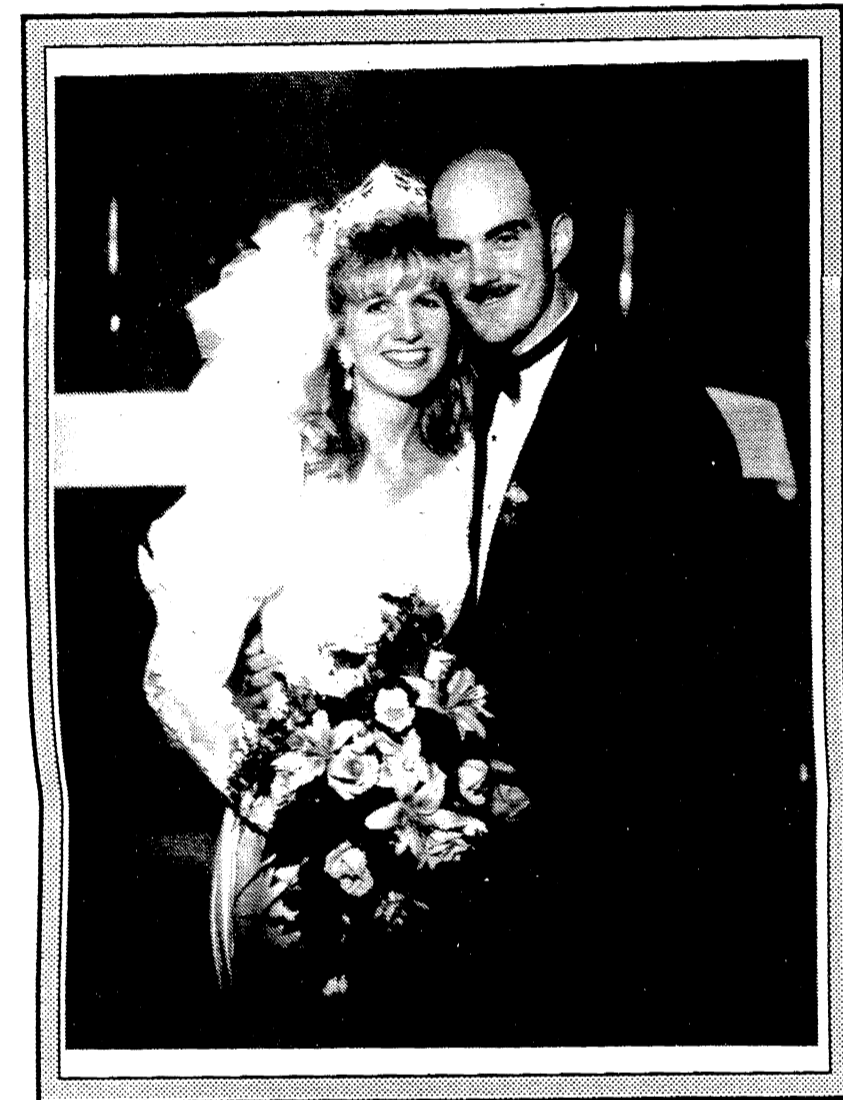
Wednesday, November 24: 7:30pm Community Thanksgiving Eve Worship at Emanuel-Rev. Roman Reineck of Bethel UCC will bring the message.

ST. MARY CATHOLIC CHURCH

Wednesday, November 17: Adult Choir Rehearsal 7-9pm

Saturday, November 20: Children's Choir Rehearsal 3:30-4:45pm

Sunday, November 21: Adult Choir 9:30am, Rel-Ed Preschool/Kindergarten 10:30am; Rel-Ed Grades 7-12, 6:30-8:30pm



Sara Terese Scully and James Tracy Lay were married on June 19, 1993 at St. Mary Catholic Church in Manchester. The Rev. Francis Murray presided. Parents of the bride are Marjorie and Michael Scully of Manchester. The groom's parents are Bonnie Fitzpatrick of Ypsilanti and James E. Lay of Ypsilanti.

Neals, cousin of the bride of Wellington, Ohio, and Renea Nickerson of Manchester.

The groomsmen were Mike Lay, uncle of the groom, of Ypsilanti, Joe Madsen of Lansing, Bill Scully, brother of the bride, of Manchester, and Paul Yarbrough of Memphis, Tennessee.

The flower girl and ring bearer were Megan Jackson and Owen Jackson, cousins of the bride, of Manchester.

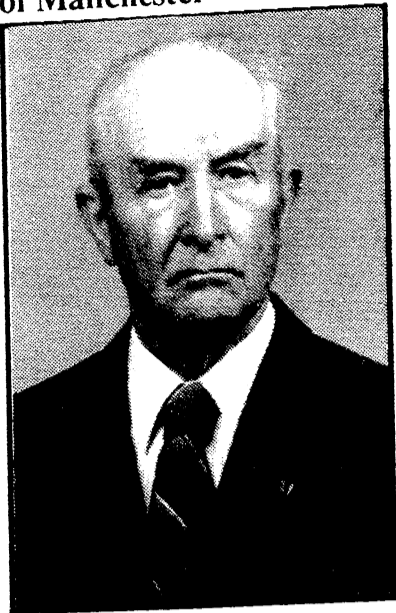
Following a reception at the American Legion Hall, the couple left for a Caribbean cruise honeymoon. They reside in Charlotte, North Carolina.

THE CHURCH PAGE IS BROUGHT TO YOU THROUGH THE FOLLOWING SPONSORS

Table listing church sponsors including George & Mable Macomber, Dan's Westside Automotive, Manchester Men's Club, Wacker's General Store, Keith's Barber Shop, Pilot Metal Products, Janice & Dave Little, Manchester Kiwanis, Manchester Car Wash, Manchester Automotive, Dr. Charles Lyon, D.O., Albers Orchards, You Owe It To Yourself..., Hendley & Datsko, P.C., Manchester Tool & Die, Manchester Plastics, Norm & Olga Walz, Living Center, S-K Sales, Inc., Manchester Chiropractic Clinic, d-n-d design, This space available for sponsorship..., Kleinschmidt True Value Hardware, This space available for sponsorship..., Manchester Manor, The Manchester Enterprise, Gene & Gertrude Smith Pinnacle Engineering, and This space available for sponsorship...

OBITUARIES

Marvin J. Kirk of Manchester



Age 75, passed away on November 13, 1993 at St. Joseph Mercy Hospital. Marvin was born on the family farm in Manchester on January 28, 1918 the son of Ferdinand and Florence (Johns) Kirk. On September 25, 1946 Marvin was married to Jeanette M. Cook and she survives. Marvin worked the family farm all his life, as well as retiring in 1985 from the US Postal service after 22 years of service. At his retirement he was Postmaster of the Manchester office. He was a forming press operator for the Ford Motor Co. before entering military service. Marvin was a veteran of WW II serving in the Asiatic Pacific Theater where he was awarded two bronze battle stars. He was a graduate of Manchester High School in 1936.

Marvin was a member of St. Mary's Catholic Church. He was also a member of the National Postmasters' League. Marvin belonged to the Washtenaw County Farm Bureau and the Michigan Milk Producers Association for 35 years. He was also active in the Tri-County Sportsman Club in Saline. Besides his wife Jeanette, Marvin is survived by three sons: Kevin & Dana Sue Kirk of St. Johns, MI, Michael & Ginny Kirk of Dublin, Ohio, Larry & Kim Kirk of Bridgewater, MI; four daughters: Karen A. Kirk of Honolulu, HI, Renee Marks of Napoleon, MI, Anita & Francis Voveris of Whitehouse, Ohio, Janel Stacie Kirk of Corinth, TX; 12 grandchildren; one brother, Leonard (Chick) Kirk and one sister, Mildred Kirk, both of Manchester He was preceded in death by his parents, a brother, and two sisters.

The Kirk family received callers on Monday and on Tuesday from 7-9 p.m. at the Jenter-Braun Funeral Home. Scripture services were held on Tuesday at 7 PM at the funeral home. The Funeral Mass will be celebrated on Wednesday, November 17, 1993 at 10 AM from St. Mary's Catholic Church with Fr. Raymond Kluge as celebrant. Interment will take place in the St. Mary's Cemetery.

Emma L. Marx of Manchester

Age 97, passed away on November 12, 1993 at the Saline Evangelical Home. Emma was born in Webberville, Michigan on March 10, 1896 the daughter of Henry and Alexia (McKay) Silsby. Emma was married to LeRoy A. Marx and he preceded her in death on February 27, 1981. Emma was a member of Emanuel United Church of Christ.

Emma worked many years at the Marx & Marx Dry Goods store in Manchester. She was also a member of the American Legion Auxiliary. Emma was a past member of the Shakespeare Club and was active in the Women's Guild at Emanuel. She is survived by two sons, Raymond and Jean Marx of Boyne City, MI, Hugh and Marjorie Marx of Savannah, GA; five grandchildren, ten great-grandchildren.

The Marx family received callers at the Jenter-Braun Funeral Home. Funeral services were held on Saturday, November 13, 1993 at from Emanuel United Church of Christ with Rev. Nancy Doty officiating. Interment took place in Oak Grove Cemetery. Those wishing an expression of sympathy for the Marx family make memorial contributions to the Emanuel Organ Fund.

ENTERTAINMENT

Croswell's "Peter Pan" — Soaring Family Fun!

A trip to the fanciful world of Never Land, where people fly like birds, and animals behave like people, is in the offing later this month when the Croswell Opera House presents the family favorite "Peter Pan" as its holiday musical.

Peter and his friends will indeed fly in the Croswell's production; rigging provided by the world-renowned Flying by Foy will enable cast members to soar high above the stage and your heart to soar right along with them!

Leading the large cast are Northville's Jay Gilshire-Hillard as Peter and husband Steve Hillard as Captain Hook. (In addition, daughter Meghan Gilshire plays one of the Lost Boys.)

Manchester resident Jayme Haskins plays one of the Indians in the show.

"Peter Pan" has a long and varied history. It began as a story and play by James M. Barrie and has since been transformed into several stage versions, both musical and nonmusical, as well as into movies and television specials.

Its first American performance in 1912 starred Maude Adams in the title role, in a performance which became one of

the greatest legends of the American theatre. Interestingly, the Croswell Opera House's 1913-1914 season opened with a performance of the play also starring the great Adams.

"Peter Pan" is a family classic you won't want to miss. For reservations, call the Croswell at (517) 264-SHOW.

"Peter Pan" is a family classic you won't want to miss. For reservations, call the Croswell at (517) 264-SHOW.

"Peter Pan," complete with all the flying and fun of the much-loved work, opens at the Croswell November 26 for eight performances through December 5. Curtain times are 8:00 p.m. Fridays and Saturdays and 3:00 p.m. Saturdays and Sundays. Tickets are \$14 regular, \$12 for students and senior citizens, and, for this production only, \$7 for children under 12.



Plan to party with the Men's Club New Year's Eve at the K of C Hall

Aunt Christy, We wish you a happy birthday

The secret of education is respecting the pupil. —Ralph Waldo Emerson

LASER KARAOKE Disc Jockey. PARTIES • WEDDINGS • GRADUATIONS • SCHOOL DANCES. AARON WAY (517) 764-1407

After Turkey Day Come to the Pickers for some real "ham". The Raisin Pickers. Friday, November 26 8 PM at The Ark 637 1/2 Main St. Ann Arbor, tickets at the door

SCHULTZ BOTTLED GAS AND APPLIANCES. PHILGAS BOTTLED GAS. PHILGAS. *Serving the area since 1939 *See us first for our low prices *We own and operate our own bulk plant *Outdoor grills-prompt service. Call Toll Free 800-882-5546 or 439-1503. PHILGAS BOTTLED & BULK. Across from Federal Prison 1115 Dexter (US 23) Milan, Michigan

★ 265-3055 ★ 24 Hr. Movie Info Hotline. ADDIAN CINEMA 6 3150 N. ADRIAN HWY. Shows before 6 p.m. \$3.00

THURS. NOV. 19 - FRI. 23 THE ADDAMS FAMILY VALUES PG13. Fri & Mon-Tues. 5:00, 7:20, 9:40 Sat. & Sun 12:30, 2:45, 5:00, 7:20, 9:40. THREE MUSKETEERS PG. Fri & Mon-Tues. 5:10, 7:30, 9:30 Sat & Sun-12:20, 2:40, 5:10, 7:30, 9:30. MAN'S BEST FRIEND R. Fri & Mon-Tues-5:30, 7:45, 9:50 Sat & Sun-1:30, 3:30, 5:30, 7:45, 9:50. CARILTO'S WAY R. Fri & Mon-Tues-4:15, 7:00, 9:45 Sat & Sun-1:00, 4:15, 7:00, 9:45. NIGHTMARE BEFORE CHRISTMAS PG. Fri- & Mon-Tues- 5:30, 7:15, 9:10 Sat & Sun-12:15, 2:00, 3:45, 5:30, 7:15, 9:10. ERNEST RIDES AGAIN PG. Fri-Tues 4:45 Only. BEVERLY HILLBILLIES PG. Fri-Mon-Tues-7:00 Only Sat & Sun-2:45, 7:00. LOOK WHO'S TALKING NOW! PG Fri & Mon-Tues 9:00 Only Sat & Sun-12:45, 9:00. **COMING NOVEMBER 24** A PERFECT WORLD PG13 MRS. DOUBTFIRE PG13 WE'RE BACK! G

LOCAL CITIZENS TO BE DRAWN BY LOT FOR MHS HIGH SCHOOL PLAY JURY

Something new in theatricals will be the feature of the evening this weekend as the Manchester High School Drama Club presents Night of January 16th, a courtroom drama by Ayn Rand. A jury of twelve will be selected from the audience each evening. High school students and adults will decide the fate of Karen Andre (Karin Messing), a young woman accused of murdering her former employer.

Prosecuting Attorney Flint (Jessica Smith) will attempt to prove Karen's guilt, while Defense Attorney Stevens (Mary Lobbstael) will produce witnesses who may establish Karen's innocence.

Witnesses include Andrea Clark, Joe Tobias, Katrina Bihlmeyer, Michael Kessler, Linda Saunders, Andrew Shook, Jenny Nosbisch, Jennie

Sahakian, Renee Wackenhut, Doug Meeks, and Christine Walter. Judge Heath (Martha Marks) will oversee the trial.

Show times are Friday, November 19, at 8:00 PM, and Sunday, November 21, at 2:00 PM.

Don't miss this exciting trial. Determine the outcome by serving as a juror!

Casey Widmayer, a senior at Lenawee Christian High School, will play the part of Anne Frank in the school's presentation of The Diary of Anne Frank on November 19 and 20, 7:00 p.m. at the Christian Family Center, 111 Wolf Creek Hwy., Adrian. Admission is \$3. Casey is the daughter of Gary and Corinne Widmayer of Manchester.

ESTATE SALE Estate from 3 story home in Ypsilanti TOYS AND COLLECTIBLES (no furniture) Saturday, November 20th - 6:30 p.m. 1282 Wampers Lake Rd. (Hwy 124) Brooklyn, MI (1/2 mile N. of US 12) Auctions by Dearborn West Estates Liquidators (517) 592-3911 Don and Marilyn Koebbe

FREE LAY-AWAY • FREE DELIVERY • FREE SET-UP. Tenpenny's GET UP TO \$5000 INSTANT CREDIT WITH APPROVED CREDIT. OAK AND CHERRY FURNITURE. 112 E. Mich. Ave., Clinton • 456-7445 Mon. & Fri. 10 am-9 p.m.; Tues., Wed., Thurs., Sat. 10-6; Sunday Noon-5

The Night of January 16 by Ayn Rand November 19 & 21 8 pm (Friday & Sunday) Manchester High School Players \$3.00 High School Auditorium Doors Open at 7:30 p.m. Jury Selected Nightly from Audience

Manchester United Way Says Thank You



Major Appliance Repair
only a phone call away

Call us for reasonable rates and reliable service on all major kitchen and laundry appliances.

313 428-8243

Now with additional staff to better serve you



MANCHESTER ELECTRIC

200 Riverside Drive
Manchester
Our 17th Year



Peter Ballantyne, left, General Manager of Manchester Plastics; center Barbara McConnell, Human Resource Manager; right Dave Petsch, chairperson of the industrial division of Manchester United Way campaign.



Manchester Tool and Die, Ron Fielder, left; Dave Petsch, center; Pat Fielder, right.



The Flower Garden

110 E. Main St.
Manchester

Open During Christmas in the Village

Stop by to shop or just to browse!



Great Lakes Bancorp-Manchester Office will be collecting gifts for needy children in the Manchester Area December 1-13.

Toys, games, boks, hats, mittens, gloves, sweaters, etc. are needed for children ages infant through teens. **NO USED TOYS OR CLOTHING PLEASE!**

Stop by Great Lakes Bancorp Manchester Office for further details. Thanks to our generous customers and friends, last year's Gingerbread Collection was a huge success!



Christmas in The Village

at **Mari's Salon**
233 E. Main
428-7616

Arts and Crafts Vendors in Salon

Paul Mitchel and Nexxu Products

Homemade Pretzels for sale



20% off

Flags make Great Holiday Gifts



• State of Michigan
• Foreign • U of M
• E M U • M S U
flags and more!

617 S. ASHELY • ANN ARBOR • (313) 665-9126

Start Your Christmas Shopping at Manchester Pharmacy!

We will be open Saturday, November 20th-9 a.m.-5 p.m.

We carry a great selection of gifts for everyone on your holiday list!



- * Hallmark
- * Precious Moments
- * Cherished Teddies
- * Merry Makers
- * Star Trek

* Many other great Nostalgia and Holiday Gifts!



Manchester Pharmacy

128 Main Street
Manchester • 428-8393

There's more to quality propane service than just getting the fuel delivered. Like flexibility and responsiveness to your needs. Like friendly, courteous representatives that make your calls pleasant and easy. Like 24-hour emergency service that's more than just an answering machine. With Pennington, you can count on competitive prices and yes, prompt, dependable deliveries from a company in business since 1953.



Pennington LP GAS

"Count on us to keep the heat on"

MORENCI.....1-800-365-5599
STOCKBRIDGE.....1-800-274-5599
FENTON.....1-800-964-2266

Manchester United Way Says Thank You



Johnson Controls, Inc. had another outstanding year in their support of the Manchester United Way. Johnson Controls' total contribution to the 1994 Manchester United Way is \$48,892.

This total includes contributions of \$10,029.00 from employees of the Container Division, \$7,137 from em-

ployees of the Machinery Division, and employee matching funds from the non-profit Johnson Controls Foundation of \$31,756.00.

Pictured above are the chairpersons for the Machinery Division campaign including (front row) Dave Petsch, Gary Stevens, Liz Blossom, Francine Hugel, and Diana Parr; (back row) Randy

Heckaman, Bill Coughlin, Russ Wilson, Amy Petre, Jim Conger and Gary Lisenbee. Unavailable for this picture were Pete Loebbestael, Bill Robinson, and Wanita Turner also from the Machinery Division.

Manchester United Way also thanks for their contributions Chrysler Proving Grounds (Paul Phelian and Donna Taylor); and, Manchester Stamping (Wayne Hamilton and Mark Umlauf).



Sandie Bowles, Employee Relations Administrator, presents a check from Johnson Controls Plastic Container Division to Dave Petsch, Industrial Chairman of United Way



Gene Smith presents a check to the Manchester United Way from his company, Pinnacle Engineering.

Christmas in the Village Special:

Roast Beef Open Face Sandwich with mashed potatoes and green bean casserole
\$4.25

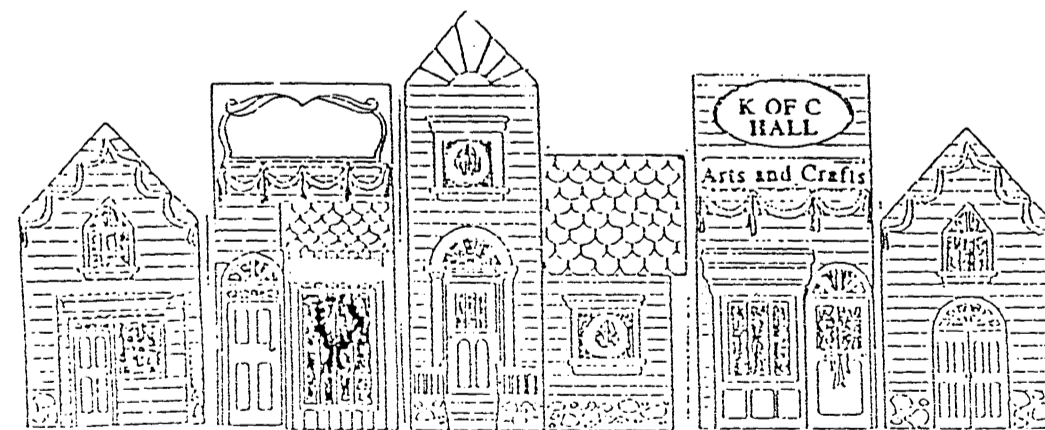


Frank's Place
104 E. Main Street
Manchester • 428-8003

New Hours!
Keith's Barber Shop

Tuesday, Wednesday and Friday
7:30-5:00
Saturday 7:00-12:00
Thursday 12:00-7:30
428-8584

MANCHESTER'S CHRISTMAS IN THE VILLAGE



Sponsored by the Community Resource Center

Saturday, November 20th

9:00 to 4:00

The K of C Hall

Many participating businesses and organizations will be open to share their Christmas wares. Area churches will host a bake sale and luncheon.

Follow the "Christmas in the Village" signs to find arts, crafts, baked goods, Christmas specials and much more!!

Follow your dream, not the beaten path.

No matter where your vacation dreams take you, AAA Travel Agency can get you there. We're Michigan's largest full-service travel agency.



1200 S. Main St., Ann Arbor 930-2250

FORUM ON EDUCATION

Column Editor, Martha Stoner

Forum on Education is intended as a place for all of us to speak our minds about the purposes of public education. Readers — including and perhaps especially students — are invited to write about the changes they would like to see in public education in general, and specifically what they would like to see in the Manchester School District.

(Martha Stoner has a Ph.D from The University of Michigan and has been teaching literature and writing at the college level since 1979.)

most of your child. Consider these as clues to help you recognize his or her thinking pattern. *Please do not expect your child to fit any of our descriptions exactly; no one does.* Each pattern has a set of essential behaviors and qualities which most people with that pattern manifest fairly consistently, habitually, and comfortably, but we are *all* exceptions to the rules. There are wide variations among people of the same pattern—there are VAKs who are athletic, AKVs who read a lot, and VKAs who speak eloquently.

Therefore, as you move through this process, look for the overall tendencies and don't get too caught up in specifics.

If your child's conscious mind uses the kinesthetic channel, he or she:

- learns and remembers things that are heard easily
- is naturally comfortable speaking in front of people
- uses detailed and organized vocabulary
- is more alert when speaking

If your child's conscious mind uses the visual channel, he or she:

- learns and remembers physical things easily

If your child's conscious mind uses the auditory channel, he or she:

- enjoys athletic competition
- does things in an organized way
- describes body sensations and feelings without hesitation
- is more alert when moving or using hands

If your child's subconscious mind uses the kinesthetic channel, he or she:

- sorts by trying options or doing something in many different ways
- pays attention outward by moving, inward by feeling
- can feel and move simultaneously
- often feels pulled in two directions

If your child's subconscious mind uses the auditory channel, he or she:

- is naturally comfortable being seen, writing, showing ideas
- organizes visually by making lists, writing things down, making things look neat
- is very aware of visual details
- is more alert when showing or writing something

If your child's subconscious mind uses the kinesthetic channel, he or she:

- sorts by writing, drawing, visualizing options
- pays attention outward by looking, inward by visualizing images simultaneously with eyes open
- sees things from two perspectives at the same time

Whether you've already noticed your child's pattern or simply have a mass of clues but no-overall guess, I suggest that you use your mind much like a zoom lens as you continue this process. Go back and forth between paying attention to detailed behavior and taking in the whole of who you know your child to be. Avoid zeroing in on one characteristic or one channel and making an assumption about a pattern.

Be patient. Above all, trust yourself. There is no right way to do this. Allow yourself some freedom and have fun with it. You may find the investigation so interesting that 'figuring out' your child's pattern becomes less important than just staying curious.

The inventory of common behaviors included on the following pages may help you determine your child's pattern by expanding and organizing your observations. As you go through it, we'd like to invite you to let go of old assumptions and judgments you might have about how your child behaves and why. The process is meant to give you new ways to consider his or her frustrating, puzzling and fascinating behaviors.

Maneuver your child's pattern by expanding and organizing your observations. As you go through it, we'd like to invite you to let go of old assumptions and judgments you might have about how your child behaves and why. The process is meant to give you new ways to consider his or her frustrating, puzzling and fascinating behaviors.

Maneuver your child's pattern by expanding and organizing your observations. As you go through it, we'd like to invite you to let go of old assumptions and judgments you might have about how your child behaves and why. The process is meant to give you new ways to consider his or her frustrating, puzzling and fascinating behaviors.

Maneuver your child's pattern by expanding and organizing your observations. As you go through it, we'd like to invite you to let go of old assumptions and judgments you might have about how your child behaves and why. The process is meant to give you new ways to consider his or her frustrating, puzzling and fascinating behaviors.

Maneuver your child's pattern by expanding and organizing your observations. As you go through it, we'd like to invite you to let go of old assumptions and judgments you might have about how your child behaves and why. The process is meant to give you new ways to consider his or her frustrating, puzzling and fascinating behaviors.

Maneuver your child's pattern by expanding and organizing your observations. As you go through it, we'd like to invite you to let go of old assumptions and judgments you might have about how your child behaves and why. The process is meant to give you new ways to consider his or her frustrating, puzzling and fascinating behaviors.

Maneuver your child's pattern by expanding and organizing your observations. As you go through it, we'd like to invite you to let go of old assumptions and judgments you might have about how your child behaves and why. The process is meant to give you new ways to consider his or her frustrating, puzzling and fascinating behaviors.

Maneuver your child's pattern by expanding and organizing your observations. As you go through it, we'd like to invite you to let go of old assumptions and judgments you might have about how your child behaves and why. The process is meant to give you new ways to consider his or her frustrating, puzzling and fascinating behaviors.

Maneuver your child's pattern by expanding and organizing your observations. As you go through it, we'd like to invite you to let go of old assumptions and judgments you might have about how your child behaves and why. The process is meant to give you new ways to consider his or her frustrating, puzzling and fascinating behaviors.

BRIDGEWATER LUMBER COMPANY

Saline Division • 7895 E. Michigan Ave.
429-5495 or 1-800-344-8530
Bridgewater Division • 8370 Boettner Rd.
429-7062 or 1-800-544-3518

This week we print another excerpt from **How Your Child is Smart** by Dawna Markova, Ph.D.

This section helps readers identify their child's learning pattern. Markova shows that children tend to favor kinesthetic—through the body; auditory—through the ears; or visual—through the eyes—learning patterns. She emphasizes that these tendencies are not the only way an individual learns, but that for many children one of the three patterns tends to dominate.

Your Child's Thinking Pattern

The simplest way to determine your children's thinking patterns involves paying attention when they speak and listen, learn to dance or play sports, read or draw. This will help you discover where the auditory, kinesthetic, and visual channels are in their patterns.

What follows is a list of the characteristics you are likely to encounter with each possible combination of perceptual channels and states of mind. Notice which of these sections (ideally, one from the conscious mind group, one from subconscious mind, and one from unconscious mind) remind you

Carpentry, remodeling & renovation

TED MICKA
Specializing in Older Homes & Barns
Licensed & Insured
(517) 536-4371
Brooklyn, MI 49230

Faist-Morrow
the place to go for new or used vehicles

"Where the QUALITY Used Cars Are"

1500 S. Main St.
Chelsea
475-8663

Even Santa Needs a Makita For Christmas

<p>5007NBK 7 1/4" Circular saw with tool case Model 5007S</p> <p>\$133.00</p> <ul style="list-style-type: none"> • 13 AMP heavy duty hi-tech motor; 5,800 RPM• cuts 2-3/8" at 90° and 1 3/4" at 45° • heavy gauge aluminum wrap-around base • ball and needle bearing construction • shaft lock • comes complete with carbide tipped blade and durable plastic tool case • double insulated <p>free case</p>	<p>BO4550 Finishing Sander with Dust Bag Model B04550</p> <p>\$44.49</p> <ul style="list-style-type: none"> • for heavy duty applications • palm grip design for easy handling and positive control • dust bag for clean and efficient sanding • 14,000 OPM • lightweight (2.1 lbs.) • powerful 1.6 AMP motor • 4" pad design for close quarter sanding • double insulated
<p>6095DWE Cordless Driver-Drill Kit 2-speed, Var. Sp., Model 6095DW</p> <p>\$156.95</p> <ul style="list-style-type: none"> • part of the 9.6 VDC cordless tool system• equipped with double voltage (9.6 V & 7.2V) one hour fast charger • 6-stage torque setting • 2-speed gear selection with variable speeds; low (0-400 RPM) or high (0-1, 100 RPM) • keyless chuck system • drills 3/8" in steel and 11/16" in wood • electric brake • kit includes battery, charger and tool case <p>Free Battery</p>	<p>BO5000 Random-Orbit Sander Model BO5000</p> <p>\$63.49</p> <ul style="list-style-type: none"> • palm size sander with random-orbit action (10,00 OPM) • compact design • a 5/32" orbit diameter allows for a faster finishing time• operates at a low noise level with reduced vibration • lightweight (2.9) • utilizes long-lasting hook & loop sanding discs • dust collector hose (optional accessory) connects sander to Makita vacuum <p>new!</p>
<p>LS1030 10" Miter Saw Model LS1030</p> <p>\$214.75</p> <ul style="list-style-type: none"> • 12 AMP motor (4,600RPM)• cuts at 4 15/16"; 3 1/2 wide at 90°; 3 1/2 wide at 45° • positives stops at 7 settings; 15°, 30°, 45° (right or left) and 0° (90° cuts) • electric brake for fast stopping of blade • lightweight (23.3 lbs.) with carrying handle for easy transporting • double insulated 	<p>JR3000V Recipro Saw variable speed Model JR3000V</p> <p>\$129.95</p> <ul style="list-style-type: none"> • one of our most versatile saws • variable speed (0-2,300 SPM); 6.0 AMP • smooth 1 3/16" stroke length • adjustable front shoe assembly • ball and needle bearing construction • comes complete with steel tool case • double insulated

BRIDGEWATER LUMBER COMPANY

continued from previous page

teach most comfortably in the same way that we learn.

You might want to think of the process of identifying your child's pattern as similar to buying a sweatshirt: imagine that there are six different styles. At some point, you will choose one and try it on your child. Take it home and have him wear it for a while. Observe him in it and reserve the right to take it back and try another if the first one really doesn't fit.

Be patient. Above all, trust yourself. There is no right way to do this. Allow yourself some freedom and have fun with it. You may find the investigation so interesting that 'figuring out' your child's pattern becomes less important than just staying curious.

The inventory of common behaviors included on the following pages may help you determine your child's pattern by expanding and organizing your observations. As you go through it, we'd like to invite you to let go of old assumptions and judgments you might have about how your child behaves and why. The process is meant to give you new ways to consider his or her frustrating, puzzling and fascinating behaviors.

School Lunch Menu

Monday, November 22:
Submarine Sandwich, Potato Chips, Dill Pickles, Peach Half, Milk

Tuesday, November 23:
Burrito with Chili, Hash Brown Patty, Tossed Salad with Dressing, Crushed Pineapple, Milk

Wednesday, November 24:
Cottage Inn Pizza, Carrot & Celery Sticks, Fresh Fruit, Milk

Thursday, November 25:
and Friday, November 26:
Thanksgiving Break

Briarwood Retailers Spotlight 1993 "Most Unusual" Holiday Gifts

Looking for something out-of-the-ordinary for holiday gift giving this year? Here are 1993's most unusual holiday gifts, according to a just-released survey of 50 major national retailers, and where to find them at Briarwood:

- **Hand-made paper** (stationery, envelopes, notebooks and sachets) from a remote mountain co-op in Nepal (\$9.5-\$3.95, *The Body Shop*)
- **Personalized photo calendar** made from 12 enlarged photos from the customer. It's customized with birthdays, anniversaries and special dates important to the recipient. (*\$29.95, CPI Photo Finish*)
- **Single-ear piercing** for those who want only one ear pierced or who favor an odd number of earrings. New this fall. (*\$5 up, Accessory Place*)
- **Limited-edition musical Elvis figurines**. The '50s version plays "Love Me Tender," the '60s version "Blue Hawaii," and the '70s version "My Way." (*\$99.95, San Francisco Music Box*)
- **Mozart, the Complete Collection**. Volume I (\$1,124.99) contains 108 CDs, and Volume II (\$749.99) contains 72 CDs (*Musicland*)
- **VideoPhone**, the first full-color, motion picture telephone (about \$1,000, *AT&T Phone Center*)
- **Hot/cold thermal travel mug** that won't leak or spill and is dishwasher safe (*\$20, Travel 2000*)
- **Pure milk chocolate Ford Explorer**, gift boxed (*\$15, Eddie Bauer*)
- **Puerto Rican estate coffees** from two different growing regions. This is the first Puerto Rican coffee in the U.S. in the last 50 years. (*\$16.99-\$21.99/lb., The Coffee Beanery*)
- **14-karat gold Looney Tunes and Disney charms** (*JB Robinson/LeRoy's Jewelers*)
- **Metropolitan Museum of Art silk ties**. Reproductions of museum art, each tie comes with its own tag explaining the work. (*\$35, Johnston & Murphy*)
- **Sleep machines** that lull you to sleep with a choice of sounds — forest rainfall, railroad clickety-clack-or ocean surf. Comes in plug-in (*\$39.99*) and cordless (*\$34.99*) models. (*Radio Shack*)
- **Tree-shaped creme brulee set** with decorative red and green sugars (*\$24/set plus \$10/2 sugars, Williams-Sonoma*)
- **African Queen gift set** including the classic 1951 movie, Katherine Hepburn's hardcover book, *The Making of the African Queen*, a copy of the original script and eight collectible lobby cards from original prints (*\$59.99, Suncoast Motion Picture Co.*)
- **Adidas sock shoe**. It becomes part of the athletic shoe but can be removed for washing. Traction lined, it doubles as an after-competition foot warmer or slipper. (*\$19.95, Foot Locker*)
- **Agate Towers**, mineral formations that tower up to 2-1/2 feet (*\$600-\$800, Natural Wonders*)
- **Blue lacquer serving tray** with three two-ounce packages of coffee and 1.5 pounds of chocolate (*\$75, Godiva Chocolatier*)
- **Five-volume set of Victoria's Secret music**. Recorded especially for Victoria's Secret by the London Symphony Orchestra, each of the romantic classical records has sold over one million copies. (*\$50/5 CDs or \$25/5 tapes*)
- **Bite-sized cookies** hand-dipped in white or dark chocolate (*\$1/5, Mrs. Fields Cookies*)
- **Mountain Spruce Car Kit**, a prepackaged assortment of bookmark, chamois cloth, potpourri, petite sachet, key light, travel room spray and six scented wooden acorns (*\$30, Crabtree & Evelyn*)

Why not the best insurance for your farm?

Farm Bureau Mutual Insurance Company of Michigan introduced the first Farmowners policy in the nation in 1960. We were the first and we're still the best. Quality coverages, customized for your farm. Call today.

Making your future more predictable.

LARRY BECKTEL
135 E. Main, Suite 200
Manchester • 428-7331

Kirk Excavating
Sand - Gravel - Fill Dirt
Basements - Driveways
Licensed & Insured
428-7938
Dave Kirk
14180 Schleweis Road
Manchester

WE'RE OUT OF ROOM!

HELP! HELP!

We've Got So Many Factory Program Units...We've had to expand our lot across the street by Walco! So we've marked them all down. Hurry in for these bargains!

75 in stock!

- 1993 Tempo's GL's** from \$7995
- 1993 Festiva's** Only \$6,995
- 1993 Aerostar XLT's** only \$14,995
- 1993 Taurus GL's** from \$12,995

GO DUTCHMEN!

MIDWEST FORD
510 W. MAIN
428-8343

Human Services Group
Western Washtenaw County
"We go the extra mile for you"

This month's event:
WEATHERIZING YOUR HOME

Date: Friday, November 19, 1993
Time: 9:00-11:00 a.m.
Place: Manchester United Methodist Church
501 Ann Arbor Rd., Manchester

What to expect:
Apply for weatherization! Materials on display! Ask the expert how to cut your heating costs this winter!

Up-coming Events:
(same place/same time)
December: 17th, Looking to the holidays and how to get thru them.
January: 21st, Exercise tips and healthy habits "Stop in, have fun, see what we're all about!"

Senior Citizens News

— T. V. Ludwick

It's said, "you can't teach an old dog new tricks". Some old dog like you-know-who has acquired a brand new personal word processor and now all I have to do is figure it out (am so glad typing is second nature).

Let's talk about when younger and could learn a lot easier! Was reading Reminisce magazine regarding two fellows who hand set bowling pins when young. Do you remember the fun we had while bowling in town at Ada Shannon and Bill Rumler's two lanes? Our league had four teams, so we had two shifts of bowling, first early and the other late. One or two nights the regular pinboy couldn't be there, so I remember Marion Ahrens and I setting pins, running back to bowl and returning to set again. The ball looks like a freight train coming down the alley and don't let anyone tell you that it is an easy job! We soon learned to hop out of the way of those flying pins, too. Were those really 'the good old days'? You betcha.

Thursday, November 18: Come to craft class at 9:30 at the Center. Chinese is coming up for our utter delight this noon at senior meals in Emanuel's dining room and it is yummy (Jan has egg rolls that we can't resist). Bingo starts at 12:30, come and enjoy. This evening, the monthly senior sponsored card party begins at 8:00 p.m. and the bus ride out to Pleasant Lake starts pickup at 6:30. This is the last card party 'til March, better be there for all the fun.

Friday, November 19: Pickup by senior bus starts at 6:00 p.m. for the Saline Senior Citizens Card Party. To ride along, you may call Erma Alber at 428-8707.

Tuesday, November 23: One of our local nurses will be present at 11:00 a.m. to take your blood pressure. Jan and crew will prepare and serve Thanksgiving dinner at noon today (it won't really spoil your appetite for the other one this week). Just gives us all ideas on what to serve two days hence. At 12:30, Barbara Zaret will be there to update us on topics of interest from the Washtenaw Council on Aging.

Thursday, November 25: Happy Thanksgiving to all.

Looking ahead to Saturday, November 27: Senior bus leaves the Center at 8:30 for Saline and the Senior Citizens Center for their bazaar and bake-sale. Please mark your calendar. You may call Erma to ride the bus.

Well, I made it! Back to the instruction book to figure out something else new!

It is better to have old second hand diamonds than none at all.
— Mark Twain

Pat DeLong speaks to Optimist Club about wild animal rehabilitation

At their meeting on Monday, November 8, 1993, the Manchester Optimist heard about injured or orphaned wild animals and how they are rehabilitated for a return to the wild.

The guest speaker was Pat DeLong, of the Friends of Wildlife. Pat currently has well over 100 volunteers under her direction. The nonprofit organization is dedicated to the emergency and extended care of orphaned and injured wild animals. They will take any furred or feathered creature for a return to a normal, natural life in the wild. She has worked with animals as small as a baby 13 line ground squirrel to as large as deer.

Orphaned baby animals are nursed with a special formula with minimum amount of human contact. A primary goal is to avoid human "imprinting" of the animal. No animals are ever kept by any of the rehab people. Human contact must be at a very low level in order for the animals to survive in the wild.

Cages for the animals are designed to provide a natural environment for each species. The cage initially offers the animal a friendly setting and protection from predators. Often, there is a transition period where the cage is placed in the natural setting and the animal is permitted free range to enter and leave the cage as desired. Of course, the final reward is when the animal has made a successful recovery and is living a normal life.

The Friends of Wildlife depends on volunteers and contributions. Volunteers are divided by the type of animal they rehabilitate. There is a group of volunteers for deer, another for raccoons, another for owls, etc. Each volunteer is trained in the rehab process before any animals are put in their care.

The evening included a very informative slide show as well as Pat's insights into the rehabilitation process.



Optimist Club president Mary Kallewaard presents a certificate of appreciation to Pat DeLong.

On Sunday, November 7, Grant Briggs and Heather Green announced their engagement. The date for the wedding is still undecided, but is looking towards the 4th of July 1994. Congratulations from your friends and family.

NOW, THE ONLY THING EASIER THAN GETTING A HOME EQUITY LINE FROM COMERICA IS USING IT.



It could be for home improvements. Or to pay for college tuition. Just borrow against your home's equity, and receive a Comerica Home Equity Line with VISA® access at only 8% APR. (Ask about our special rate on lines of \$50,000 and over.) And what little interest

8%
A P R

you do pay may be tax deductible. What's more, a Comerica Home Equity Line with VISA access carries no annual fee. So just call 1-800-292-1300 to apply over the telephone, or stop by the Comerica branch nearest you. It's easy to get. But even easier to use.

Comerica Bank

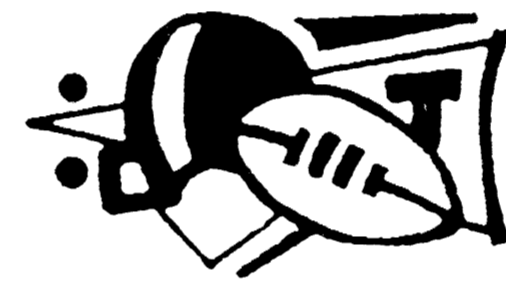
A better bank for you



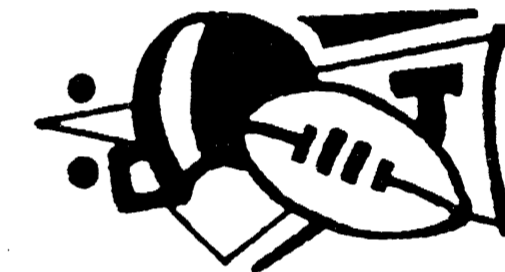
*Consult your tax advisor regarding tax deductibility. Rates may vary quarterly. Based on the highest prime rate as published in the Midwest edition of The Wall Street Journal plus 2%. Currently the APR with a 2% margin is 8%. Maximum APR is 18%. You must carry insurance on the property that secures this account.

Member FDIC

GO DUTCH TO THE TOP!



The Publisher
Emory Garlick



KITCHEN & BATH SPECIALISTS

It Works

"Where One Call Does It All"

Hours: Mon-Thurs 9 am-5:30 pm
Fri 9 am-7 pm • Sat 10 am-2 pm

517-592-2992

124 S. Main • Brooklyn

- Cabinets - Many Brand Names!
- Counter Tops - Laminates, Corian
- Ceramic Tile
- Plumbing Fixtures - Kohler, Delta, Moen
- Showers & Tubs
- Jacuzzi Whirlpools
- Hot Tubs

DOWNTOWN
BROOKLYN

WAHL OIL CO.

Serving Local Communities Since 1945
HOME HEATING OIL

PREMIUM DIESEL FUEL • K-1 KEROSENE • REGULAR AND UNLEADED
• GASOLINE • AGRICULTURE & INDUSTRIAL LUBRICANTS

SERVICES:

- EMERGENCY DELIVERY, 24 HOURS A DAY, 7 DAYS A WEEK
- AUTOMATIC "KEEP FULL" DELIVERIES
- BUDGET PAY HOME HEATING AVAILABLE
- CASH AND QUANTITY DISCOUNTS

For Quick, Courteous Service Phone:

Toll Free 1-800-373-5729

Locally 313-475-8595

6810 Clear Lake Road, Grass Lake

Sula Darlene Jeffers

ATTORNEY AT LAW
146 E. MAIN STREET
P.O. BOX 625
MANCHESTER, MICHIGAN 48158

(313) 428-8190

Ten Year Level Term Life Insurance: Low Cost Peace of Mind

Ten Year Level Term life insurance from Auto-Owners is designed to give you peace of mind without putting a financial burden on your family members or business partners. Call us for all the details and special low rates.

Auto-Owners
Insurance

Life Home Car Business
The No Problem People®

Sutton Agency, Inc.
CONNIE WIDMAYER, AGENT
136 East Main Street • Manchester,
Phone 313-428-9737

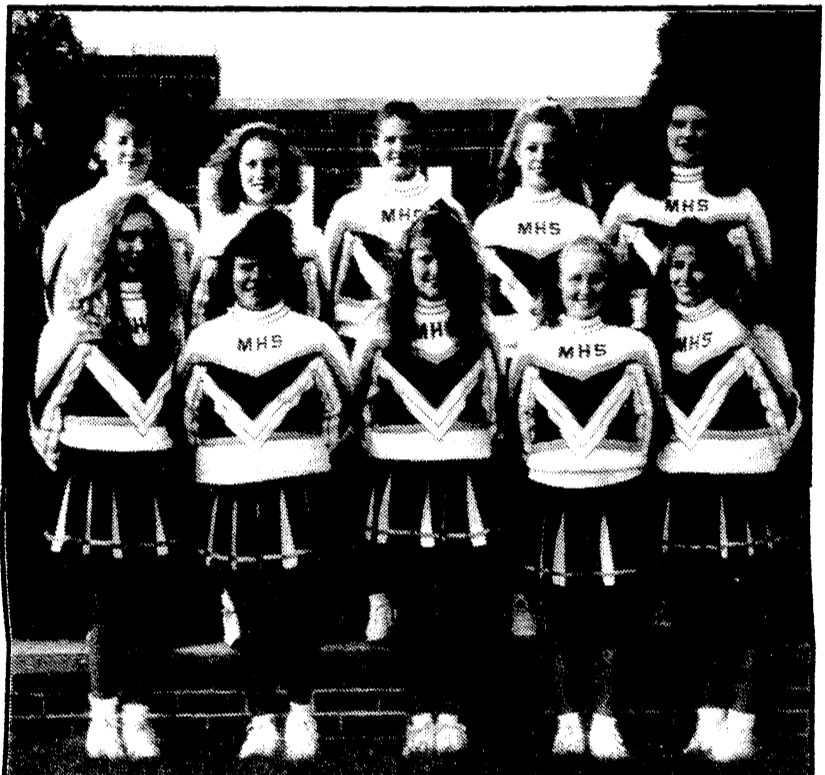


SPORTS

Varsity Cheerleaders



Enthusiasm abounds - cheerleaders rev up the crowd in last Saturday's game. Our varsity cheerleaders placed fourth in Cascades Conference Fall Competition on Saturday, November 13 at Napoleon High School. In individuals, Jenny Ash received Honorable Mention. Ra Ra Ra, girls! Great job all year!



The Manchester Varsity Football Cheerleaders: bottom row, left to right - Renee Wackenhut, Martha Marx, Stacy Sloan, Karin Messing, Christine Walter; top row - Jenny Nosbisch, Franki Bisard, Melissa Driessche, Jenny Ash, Kellie Stockwell. (Not pictured, Jodi Moore).

Soaring with the Flying Dutch

— by Karen Strock

The MHS FLYING DUTCHMEN remain undefeated in the 1993 season after beating the Schoolcraft Eagles 10-0 on Saturday, November 13. They move one step closer to their goal by repeating as Class C Region 3 Champions.

Midway through the 2nd quarter, the Eagles faked a punt, but failed to gain a first down. [continued next page](#)

Those present were aware of the wet and windy conditions. They witnessed a tremendous defensive battle between the only unbeaten schools in Class C — until they matched up against one another! The Dutchmen are now 11-0 and have held their opponents scoreless on 7 occasions.

Manchester will play in the semi-finals against the Region 4 Champions, Brown City, on Saturday, November 20, at 1:30 PM. The neutral site for this game will be Lansing Sexton High School. The winners of the two semi-final games in Class C will meet in the Silverdome on Friday, November 26 at 5 PM.

THE GAME

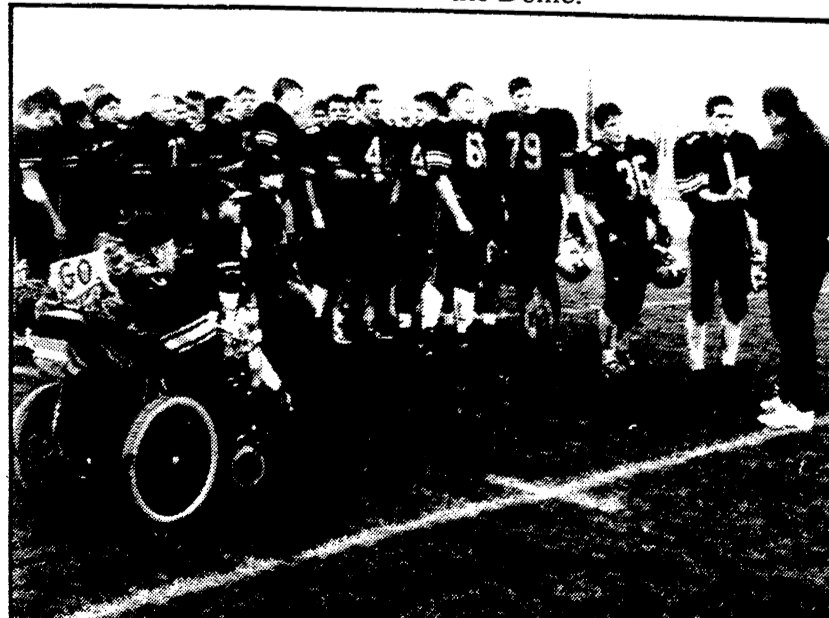
The wind was blowing about 20 miles per hour from the southwest Saturday. The crowd was large and many jackets from surrounding communities could be seen. It was standing room only in Manchester.

Although MHS won the coin flip, the Dutch elected to kick off first, as they have in each game this year. With Strock's KO going into the end zone, the Schoolcraft Eagles began their first offensive series on the 20 yard line. On 3rd and 9 the Eagles' QB was nearly intercepted by Andy Winzenz.

There followed a series of punts and fumbles for the remainder of the first quarter. The defensive teams for both teams were strong and hard hitting.

Schoolcraft looked like they would score first, gaining a 1st down at the Dutch 11 yard line. They were then hit with a 5 yard illegal procedure penalty and a 10 yard holding penalty. Schoolcraft completed a pass good for 2 yards, and then Tom Fielder tackled the Eagle QB for a 10 yard loss. At the Manchester 34, the Eagles needed 33 yards on a 4th down play to get a 1st down. They attempted a pass, which fell incomplete, giving the Dutch the ball.

The next two possessions for the Dutch ended in punts, as neither team could gain 1st down

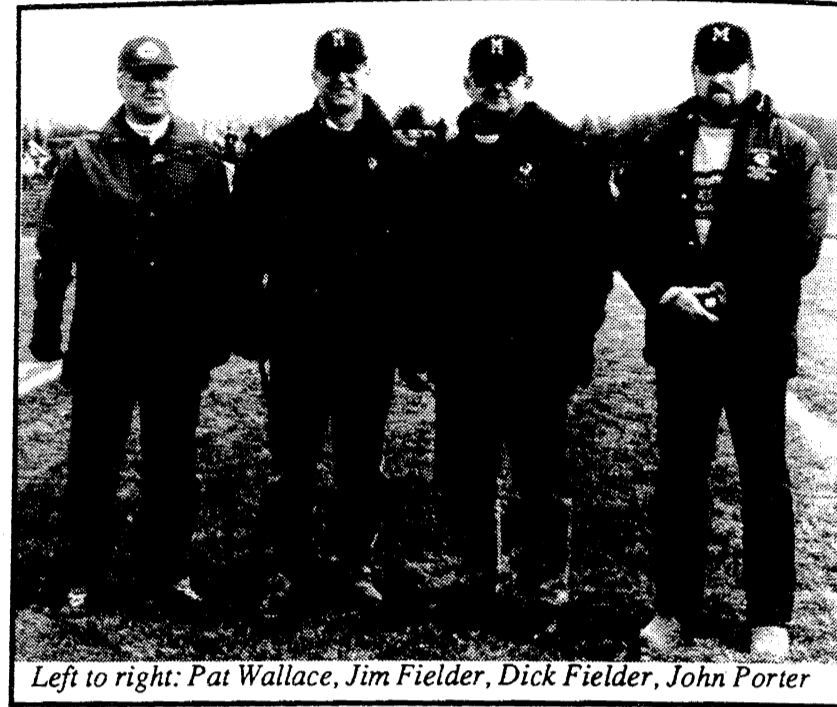


Manchester High School athletic director Dave Swanson hands out medals to the football team after Saturday's game.

Continued from previous page

PROFILES

The Men in the Press Box



Left to right: Pat Wallace, Jim Fielder, Dick Fielder, John Porter

Dick Fielder

Background: Graduated MHS in 1967. Played football, baseball, basketball and track in high school. Has coached football since 1974. Has also coached girls' and boys' basketball at the junior high level.

Career: Graduated from EMY with a BS in Elementary Teaching. Has MS from EMU in Curriculum Foundations. Teaching in Manchester since 1977.

Interests: Reading, fishing, being out of doors.

Comments: "This team is very skilled and intelligent. They cooperate with the coaches. Good Luck. Go all the way!"

John Porter

Background: Graduated from Chelsea High School in 1970. Played defensive end on high school football team. Working with Manchester football teams since 1990.

Career: Studied Electrical Engineering at WCC. Has been Journeyman Electrician for 17 years. Works for Aladdin Electric in Jackson.

Interests: Football, farming, hunting, fishing

Comments: "I like the size of heart of these kids - they don't give up. I think they are going to the Dome."

Pat Wallace

Background: Graduated MHS 1967. Played football, baseball and basketball in high school. Serves as another set of eyes for the coaches. Worked as an assistant coach from 1980-88. Helping out this year.

Career: BS in Computer-aided Manufacturing from EMU. Is a Vietnam Vet. Works for Ford Motor Corp.

Interests: Avid golfer. Coin collector.

Comments: "This is a talented, cohesive unit that works well together. They represent well the community - by their dedication, their actions, and the sportsmanship they display on the field."

Jim Fielder

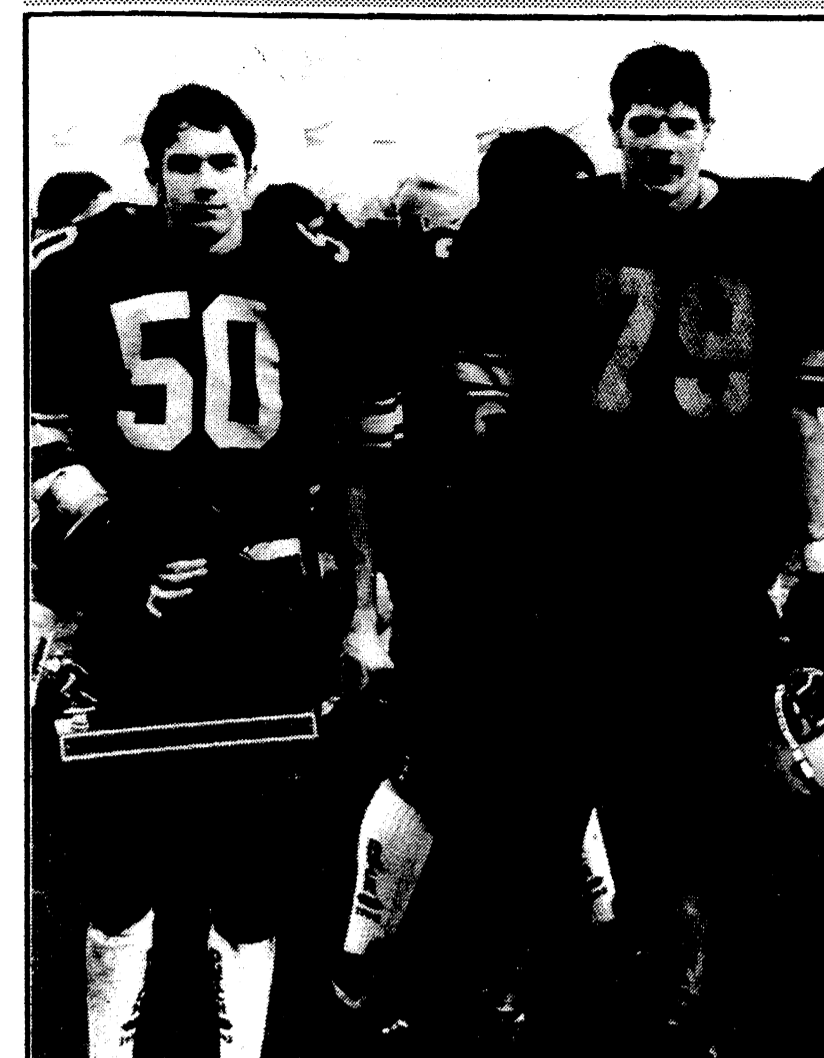
Background: Graduated MHS in 1966. Played football, baseball and basketball in high school. Has coached at some level of football since 1971. Has also coached basketball and baseball at Manchester.

Career: Graduated from EMU with a BS in Industrial Education and a minor in Physical Science. Has a MA from EMU in Administration and a minor in Math. Began teaching at Manchester in 1971.

Interests: Reading - Biographies, Science and Math History

Comments: "I am very happy with the way that this community backs the school program. That is the reason for its success. This team is enjoyable to watch. I have coached them at various levels and it is enjoyable to watch them grow and develop and be successful. These kids are good people."

SPORTS



Two of the team tri-captains, #50 J.D. Gould, #79 Matt Fielder with the championship trophy.

— Photos by Kathy Kueffner



As has become a tradition, the football players stop by to visit with Bobby Hayden on the sidelines. Standing next to Bobby is his grandparents.

The Game

continued from previous page

The Dutch took possession at their own 29. After two completed passes to Brandon Woods, a one yardgain by Shane Goodell, and a 4 yard keeper by Fielder, the Dutch had gained 2 first downs and were in Schoolcraft territory.

The Eagles' defense stiffened and Shayne Ahrens was forced to punt. The ball was downed by Manchester on the 23 of Schoolcraft.

On their first play, the Eagles were penalized for holding. The QB then threw a pass which was intercepted by Brent Woods near mid-field. Brandon had gone up with the intended receiver and tipped the ball to Brent. He returned the ball to the Eagle 34. A personal foul against the Eagles moved the ball to the 19.

The Eagles hit hard, dropping Goodell for a 3 yard loss. They then hit Brad Davis, causing him to fumble for another 2 yard loss. Fielder then gained the lost yardage back on a keeper. Facing 4th and 10 at the 19, Manchester let the clock run down and called for a time out with only 8 seconds left in the half. Jeremy Strock entered the game and kicked a 37 yard field goal into the wind for the only score of the first half.

Schoolcraft elected to receive the second half KO. Strock again reached the end zone for a touchback. The Eagles, staying on the ground, made 2 first downs, despite suffering a 7 yard ss at the hands of J.D. Gould and Ahrens. Forced to punt from their own 45, the Eagles' punter kicked for only 23 yards. Brent Woods returned the kick to the Dutch 37.

Goodell ran for a 1 yard gain. On second down, Fielder hit Mike Barnard with a pass at the Dutch 45. Barnard eluded the defense and then raced to the end zone for the TD. This 62 yard pass, followed by the PAT, gave the Dutchmen some breathing room. With 18 minutes remaining in the game, the Dutch led by 10.

The remaining 6 minutes of the 3rd quarter belonged to the Eagles. In fact, the Eagles' offense was on the field all but two plays of the entire third quarter.

Strock's KO was taken at the 3. Mike Crogan and Ahrens teamed up to drop the return man at his own 32.

With the exception of one pass, the Eagles again stayed on the ground. They gained 2 first downs and were down to the Manchester 34 yard line. On the next carry, Ahrens hit the ball, jarring it loose; the runner was tackled; and Mica Puscas recovered the fumble for the Dutch on their own 32.

Manchester needed to maintain possession of the ball and use up the 4th quarter clock. Getting some first downs would certainly help the cause. The Dutch gained 2 first downs, on a combination of passes and ground attack, and reached the Eagles' 38 yard line. A 4-yard loss and another fumble by the Dutch could have led to disas-

HELP WANTED!!!!

EVERYONE — WEAR YOUR MAROON AND GOLD. BRING YOUR FLAGS. WE NEED SOME BANNERS. (Did you see the flags and banners displayed by Schoolcraft last week???)

IF YOU NEED A MANCHESTER SWEATSHIRT OR T-SHIRT, CONTACT A FOOTBALL PLAYER OR THE SCHOOL. A VARIETY OF SHIRTS IN SCHOOL COLORS ARE ALSO AVAILABLE FROM MANY MANCHESTER MERCHANTS.

Show your school spirit and school colors. Don't forget - Game Saturday at Lansing Sexton - 1:30. Maps available at the school or the ENTERPRISE. Bring your noisemakers and support the FLYING DUTCHMEN. See YOU there!!!

ter. Puscas brought down the Eagle, who had recovered the fumble, at the 49 of Manchester. Schoolcraft went to the air in an effort to catch up. Their first pass put them on the Dutch 35. Their second pass landed in the outstretched arms of Brandon Woods, giving the ball back to the Dutch on their own 30. Running plays by Manchester (Goodell, Davis, and Puscas) and a 15 yard penalty against the Eagles, moved the ball to Schoolcraft's 23. Attempting to use as much time as possible, the Dutch took a delay penalty and finally turned the ball over to the Eagles on downs. Only 1:41 remained in the game.

AWARDS FOR THE GAME

Offensive Team: Mike Barnard; Defensive Team: Matt Fielder and Brad Davis; Scout Team: Adam Erskine; Special Teams: Jeremy Strock

COACH'S CORNER

Coach Gall had some good things to say about his team's performance. "I thought we played well defensively — outstanding in team play. The defensive front did a good job, which allowed the linebackers to slide and get the tackles. I felt that the 3 interceptions were key plays.... Offensively, Mike (Barnard) played an outstanding game. He did a good job hooking up with Tom for some key 1st downs."

Looking ahead to this week's game, Coach Gall had the following comments. "Brown City has a solid football team. They play a 4-4 defense like Jonesville...The defense with movement in the defense with stunting and cross blocking...Offensively, they run a wing T...They look like Harbor Beach (who Manchester played two years ago in play-offs)...They try to use a lot of deception."

THE LEADERS

Offensively, Tom Fielder's passing record was 8-10-0-131. The receivers were: Mike Barnard (3/77 - 1 TD); Brandon Woods (1/48); and Shane Goodell (1/6). Rushing leaders were: Brad Davis (4/28); Shane Goodell (12/18); and Mica Puscas (4/15). Defensive lead-

Directions To Lansing Sexton High School:
Take M-50 West to 127 North to I496. Exit at Logan Street. Turn right (North) to Michigan Ave. Left on Michigan Ave 4 blocks to Sexton

CLINTON FOOT & ANKLE CLINIC
301 W. Michigan Ave. • Clinton, MI
517-456-4114

Offering complete foot and ankle care for the entire family.
-Specializing in-

Reconstructive Surgery	Laser Surgery
Sports Injury	Warts
Infant and Child Disorders	Ingrown Nails
Diabetic Care	Fungus
Foot and Ankle Injuries	Nerve Pain
Heel Pain	Skin Problems
Foot Pain	Bunions
Hammertoes	Calluses
Orthotics (Custom Casted Shoe Inserts)	

DAVID R. LEVITSKY, D.P.M.
Board Certified Surgeon
Member of: American Podiatric Medical Association
Michigan Podiatric Medical Association
Hours:
Wednesday/Fridays 10:00-5:00 p.m.
Saturdays 10:00-12:00
Please call for appointment—Most insurance accepted

Benedict's Service

The only FULL service gas station in town.
327 W. Main St. • Manchester
428-8576

NOVEMBER SPECIAL

- Test cooling system for leaks
- Flush Cooling System
- Recycle Antifreeze
- Protect Cooling System to-35°F
- Check starter System
- Check Charging System
- Check Condition of Battery
- Check all hoses and belts
- Check all fluids & add as necessary
- Check thermostat
- \$95 value **ONLY \$65**

We also offer full service on:
• rotors and drums • brakes • exhaust • shocks & struts
• tune ups • front end alignments • radiators • tires • tie rod ends • CV shafts • batteries • transmissions • we turn rotors and drums

Monday-Friday 7 a.m. - 7 p.m.
Saturday 8 a.m. - 5 p.m.
Sunday - Closed

To The Top

CLASSIFIEDS

SERVICES

Michigan Peat Sales: Black dirt for sale \$12 a yard delivered. Fast delivery. 428-9664 tfn

Lost or Found a Pet? Call the Huron Valley Humane Society, 662-5585. tfn

Fielder Painting: Interior and exterior. Free estimates. Senior citizen discount. Phone 428-8506 tfn

Black Dirt For Sale: By the pickup load or delivered. Dozer and backhoe work also available. 428-9265. tfn

Village Hair Forum in the Mill. Full service salon with tanning beds. 428-7684. tfn

Excavating: Sand, gravel, backhoe and bulldozing. Reasonable rates. 428-9265 tfn

Benedict Painting: Call Chuck for free estimates. 15 years experience — interior & exterior painting. 517-536-4812. tfn

Little Wack Excavating: Basements, drainfields, bulldozing. Black Dirt. Topsoil. Sand. Gravel. Ponds. Snow Removal. Salting. Paul W. Wackenhut 313-475-8526. 93/p

Wallpaper hanging/stripping. Beautiful selection of papers and fabrics. SALE now in progress! Call "MY SISTER'S HOUSE" for free in-home consultation. Juli Troz 428-7117. tfn

Farmers' Sand and Gravel. We deliver and spread driveways. 475-8850 tfn

Alber Excavating Basements, drainfields, driveways, top soil, black dirt, gravel and sand. Steve Alber 517-536-8257 or 428-8636. 12/93p

Give your livingroom a facelift before the holidays. Call Martha for free PAINT estimates. 428-9269. References. 11/4, 11/18, 11/25p

Attention Homeowners & Renters Age 55 & Over: 30% Discount on Homeowners & Renters Insurance. Sutton Agency, Inc. 428-9737. tfn

Let me help you, make your life a little lighter. Clean your home. Call Jane 428-1141. 11/11, 11/18p

Do you worry about your elderly mother living alone? Come let her live with us. We provide meals, snacks, laundry, utilities and companionship. 428-9100 for information. 11/18p

Custom Combining. Call 428-9100. 11/18p

CHILD CARE

Fall Enrollments being accepted in Toddler, Preschool, and Latchkey Programs, for children 1-12 years. Call Little Dutch Child Care Center at 428-8988. tfn

HELP WANTED

Care Givers: Weekends in Ann Arbor residence for six seniors. Experience preferred. Call 313-663-4550 M-F 9 a.m.-5 p.m.

\$6 \$6 Manpower has jobs, starting at \$6 an hour. No experience necessary. Will train. Come in today.

MANPOWER 313-665-3757
11/18, 11/15, 12/2, 12/9

HELP WANTED

NOW HIRING-CHELSEA A & W- Competitive wages, flexible hours, part/full time. Days or nights. Please apply in person at 1555 S. Main St., Chelsea. 5/27 tfn

Chelsea Big Boy- All positions available. Apply in person. 475-8603. 1610 S. Main, Chelsea. 5/13 tfn

SALES

The recent merger of TruGreen in ChemLawn has created a need for several sales people. TruGreen-ChemLawn is the largest and fastest growing lawn and tree service in the nation with the annual sales of over \$450 million. The individuals we seek will be motivated, successful and have good communication skills. In return we offer a base salary between \$275 and \$325 per week, commissions, medical benefits, 410K and stock options with ServiceMaster, our parent company.

Persons looking for advancement into sales management are encouraged to apply. For confidential interview call Mr. Hunt, 313-665-7707, Ann Arbor. EOE/MF 11/11, 18

Personal Care Assistant needed for middle aged spinal cord injured male. A.M. hours, reasonable hourly rates offered. Clinton area. Call eves. after 7 p.m. 517-456-7559 or 517-456-4296. 11/18, 11/25

Help Wanted-Pre-School aid with gentle voice, cheerful attitude and able to work 10:45 to 5 p.m. M-F. Training or experience helpful. 517-456-7646 or 517-431-2636. 11/18, 11/25

Latchkey Assistant needed 3-6 p.m., M-F. Pre-school Assistant needed 7:30 a.m.-12:30 M,W, F. Call 428-8988. 11/18, 11/25

JV VOLLEYBALL COACH NEEDED- Volleyball experience and coaching experience preferred. Apply to: Mr. Dave Swanson, Director of Student Services/Athletics; Manchester High School; 710 East Main Street; Manchester, MI 48158. Deadline for applying is November 23, 1993. 11/18

MANCHESTER CHELSEA JOB OPENINGS

Data Entry and Factory workers needed now. Day and afternoon shifts. Over-time. Apply Mon-Fri 8 a.m. to 10 a.m. or 1 p.m.-3 p.m., or call 313-572-8880 for an appointment.

ADIA 3080 Washtenaw Ypsilanti 11/11-11/25p

JAC Products Inc. Positions available for all three shifts in assembly and injection molding full time opportunity with great pay a great benefits. Anyone with factory experience or good dexterity skills should come for an application between 1 pm. and 2 pm. Friday, Nov. 12th at 1901 E. Ellsworth, Ann Arbor. 313-457-5020. 11/11, 11/18

To my extreme mortification, I grow wiser every day. —Lord Byron

FOR RENT

Large 2 bedroom in the Village. S585 includes all utilities. No pets. 428-7173. 9/16 tfn

One Bedroom Apartment for Rent. No pets. Lease. 428-9216 tfn

Office space for rent. Downton Manchester. 517-431-2008. 9/21 tfn

Manchester-large 2 bedroom apartment in Village. Hibbard Street. Private deck. No pets. S580 month. 428-9570. 9/19 tfn

Hall "Where Friends Meet" Receptions, banquets, parties. Reasonable rates. Seating 300 plus. 517-456-4506. 10/7-12-30p

Apartment for rent. 1 Bedroom-close to downtown. 428-8800/428-7882 after 6 p.m. 9/29 tfn

Efficiency apartment for rent. 3 miles from Tecumseh. Ideal for single senior citizen. Call days 428-2216 or call 517-423-6862 eves. 11/11, 11/18p

We are accepting applications for a two bedroom barrier-free apartment. Rent starting at \$317. For further information call 428-9270. An Equal Housing Opportunity.

3 bedroom apartment for rent in Village. References. S575. 428-9380. 11/11 tfn

Newly remodeled farm house located at 11726 Hard Castle Rd., Brooklyn. \$650 per month. By appointment only. Call 517-764-0700. 11/11, 11/18

2 bedroom apartment with cathedral ceiling in the Village of Manchester. S325 a month. Call 428-0966. 11/11p

For rent-3 bedroom ranch. Month to month lease. S700/month. 313-428-9150. 11/18 tfn

Small ground floor one bedroom apartment. Month to month 313-428-9150. S300/month 11/18 tfn

For rent: Spacious 2 bedroom, 2 bath, 2nd floor, Main St. apartment. Many extras, laundry hook-up. Call Martha at 428-9269 to view. 11/18p

WANTED TO RENT

WANTED - DOWNTOWN MANCHESTER SINGLE OFFICE for professional. 250 + square feet or larger, will consider short or long term. 313-482-1557. 11/11, 11/18, 11/25p

WORK WANTED

Eavestrough cleaning, fall clean up and snow shoveling. Free estimates. Call T & N Service 428-7002. 11/4, 11/11, 11/18

Will take care of your farm animals while you are away on vacation. Specializing in horses. Experienced. Local references available. Dependable. 428-8005 evenings or weekends. tfn

MISC. FOR SALE

McCulloch Saws-3205 AV-14 saw, several different kits available. Ask for demonstration. Engine oil and bar oil for all makes and models of saws. Chain bars and sprockets for all makes of saws — good prices, too. A few good used saws, ask about them. Small welding jobs! Earl Alber 313-428-8707. tfn

KILLS FLEAS! Buy ENFORCER @ Flea Killers for pets, home and yard. Guaranteed effective! Available at: Kleinshmidt's True Value Hardware 7/7-11/17

FOR SALE-3point PTO seeder/fertilizer, 10 bushel capacity S200; Simplicity 48" snow thrower (for 16 h.p. tractor), 650 board ft. rough sawn oak & 450 board ft. rough sawn walnut (S1,500). Call 428-9649. 9/91 tfn

Blue recliner, 1 year old. Looks like new. If interested call 428-7367 after 5:30 p.m. M-F. 11/11, 11/18p

Fresh home grown turkeys for sale. \$1.45 per pound. Call 662-8085. 11/11, 11/18

Two furnaces-Williamson 100,000 BTU Propane forced air S150. Large leaders wood burner forced air S150. Also Toastmaster-Humidifier 3 speed S50. 428-8598 eves. 11/18p

ANNOUNCEMENTS

NEED COLLEGE MONEY?

For information, application for scholarship search, send self addressed #10 envelope to College Financial Sources, Box 815, Manchester, MI 48158. tfn

CARD OF THANKS

I would like to thank Father Murray and Father VanHoof, everybody who remembered me with prayers and cards, all my children who took such good care of me. A mass of Thanksgiving was said on Monday, November 15. Eleanor Ball

Federal Surplus Foods Friday, Nov. 19, 1993 Manchester United Methodist Church 9-11 a.m. Butter, Peaches, Raisins

DEER PROCESSING Cutting & Wrapping Vacuum Packing Available Refrigeration Available

YOUR DEER Venison Salami, Jerky, Polish & Italian Sausage, Pepperoni Sticks

WAYNE BUCKNER 10886 Lawrence Rd., Brooklyn 1-800-638-1695 (517) 592-2579

Other Custom Meat Cutting Available State Inspected Facilities



REAL ESTATE

110 Auburn A pleasant surprise awaits you—this home is twice as spacious as it looks! Full walkout adds room for exercise equipment, Mother-in-law or teen apartment or possible home office. Lovingly maintained, ready to move into and enjoy. Offered at \$119,000. Janice Booth Coldwell Banker Schweitzer Real Estate 930-0200/428-9308 E.H.O. tfn

Three bedroom farm house on 1 1/2 acres, 1/2 mile north of Manchester on M-52. Please call 313-429-2476 to make appointment or drive by first at 10170 M-52 Manchester-Chelsea Rd. 9/91 tfn

WANTED

Wanted: Antiques, old toys, glassware, jewelry, furniture. (517) 592-3911. 10/21, 28, 11/4, 11, 18, 25p

Clinton, Michigan-Commercial building for lease or sale, located on Main Street. (Michigan Ave.) Set up for doctors office. Call 428-9216. (other possibilities). 10/21 tfn

USED VEHICLES

'85 Pontiac 6000 STE loaded, good condition, high mileage, well maintained. S2,900. 428-0847. 11/11, 11/18p

ANTIQUES

Manchester Antique Mall: 35 Dealers. Open 7 days 10-5. 116 E. Main. 428-9357 tfn

The Manchester Enterprise has grey Flying Dutchmen sweatshirts for kids in stock. Great for gift giving or for keeping warm on these cool fall evenings! We also have maroon and gold adult sweatshirts in stock. Stop by 109 E. Main St. 428-8173

TO YOUR GOOD HEALTH

Great American SmokeOut Day Thursday November 18

Second-Hand Smoke—The Invisible Killer

Did you know that smoking in your home could cause asthma in your child? Thousands of innocent people die every year from exposure to "secondhand" or passive smoke. And many more thousands suffer from heart disease because of this invisible killer.

The EPA said passive smoke increases risk of acute lower-respiratory and middle-ear infections, asthma, and respiratory irritation for children exposed to tobacco smoke in the home. If you smoke, stop now. Smoking kills 435,000 Americans a year. That's a tragedy. A worse tragedy, however, is that many innocent children will suffer serious health problems—even die—because of smokers who are thoughtlessly spreading illness and death.

• An estimated 37,000 Americans may die of heart disease caused or exacerbated by environmental tobacco smoke.

• Children chronically exposed to environmental tobacco smoke have a higher incidence of cough, wheeze, middle ear infections, chronic bronchitis, and pneumonia. They may also be more likely to develop lung cancer as adults.

• Forty to 50 percent of children under 5 live in homes where they are exposed to environmental tobacco smoke.

• A recent ALA/Gallup survey says that 8 out of 10 smokers recognize that environmental tobacco smoke can be hazardous to babies, small children, and pregnant women.

ENVIRONMENTAL TOBACCO SMOKE: THE FACTS

Nicotine-An ingredient in many bug sprays **Carbon monoxide**-The poisonous gas that kills people who commit suicide by inhaling car exhaust fumes **Cyanide**-The deadly ingredient in rat poison **Formaldehyde**-A preservative for dead frogs **Ammonia**-A floor cleaner **Methanol**-A rocket fuel **Cadmium**-Used in car batteries **Butane**-A lighter fluid **Arsenic**-An ant poison **Acetone**-A paint stripper **Toluene**-An industrial solvent **Benzene**-The toxin which contaminated Perrier water, forcing a global recall **Polonium-210**-A radioactive element

ORTHODONTIST

RAYMOND P. HOWE D.D.S., M.S.

515 S. Main Street Chelsea

Telephone (313) 475-2260

Lock up a rising rate with a CD that won't lock you in.

RISING RATE CD® Annual Percentage Yield

3.25% 3.50% 3.75% 4.75%

1st Six Months 2nd Six Months 3rd Six Months 4th Six Months

A guaranteed rate increase with a no-penalty withdrawal option every six months.

Whichever way interest rates might go, the Rising Rate CD is a smart investment bet. Because if interest rates remain flat or drop, you'll still get a guaranteed raise in your CD rate every six months. But if interest rates begin to climb, the Rising Rate CD gives you the liquidity to pull out once every six months of its initial two-year term without penalty.

The rate earned for each six-month period rises as the chart above indicates, climbing to a 4.75% APY during the final six-month period.* You have the option of withdrawing all of your investment within the first ten days of any six-month interval during the initial two-year term without penalty. Or you can take out any portion of it as long as a \$1,000 balance is maintained.

The Rising Rate CD. The liquidity you want, the guaranteed interest growth you need. To open yours for as little as \$1,000, call or visit any participating bank office.

FIRST OF AMERICA A bank for life.™

*A penalty may be imposed for early withdrawal other than periods stated above. At the fourth maturity, your CD will automatically renew as a two-year CD. Annual percentage yields shown above reflect the yield for each six-month period separately, and are not cumulative yields. Deposit limits apply. Individuals and sole proprietors only. Rates good as of 10/31/93, subject to change without notice. Limited time offer available at participating banks only. Equal Housing Lender. Member FDIC. If hearing impaired, TDD available from 9-5 EST at 1-800-289-4614. For information, call: 1-800-735-0034

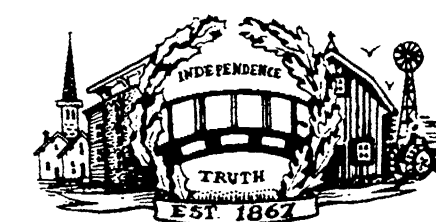
Salute to the Dutch
pages 9 through 12

Chamber Visits Plastics
page 3

Ford Legacy
by Angie Carlson
page 13

Thursday, November 25, 1993

MOST VOTERS
ARE
LIBRARY USERS



THE MANCHESTER ENTERPRISE

The Center of the Universe

126th Year — No 5

Manchester, Michigan

35¢ per copy

The Manchester High School football team cordially invites family, friends and fans to the Silverdome

— Karen Strock

"Silverdome, here we come!" "We did it." "We're going to the Dome." "We made it TO THE TOP!" But, wait a minute - there's still one more game to be played. And the Manchester Flying Dutchmen want to make their season a perfect 13-0!

THE DREAM

Four years ago, an eighth grade football player at Manchester Middle School dreamed of playing in the Silverdome. Not only was his team there, but he dreamed that he helped his team win the game when he ———! You fill in the blanks, for it is a certainty that many seniors on this MHS football team had a dream - a dream of achievement - a dream of going TO THE TOP. And each member of this team has had a role in that dream.

Many things have been asked of these players. Their individual roles from week to week have not always been the same. How many teams can you think of that score 442 points in a single season? Or, with a potent offense, have no runners gaining over 1,000 yards, and no receivers over 1,000 yards? Or have 14 different players score 61 touchdowns in a season? Or allow the opposition only 25 points in 12 games? This is truly a TEAM of MANY - talented, dedicated, and smart young men.



#1 Brandon Woods brings down a Green Devil with backup from numbers 50-J.D. Gould, 56-Kye Potter, 42-Shane Goodell, 34-Brad Davis and 87-Man Fielder.

— Photo by Rick Ridenour

The Class of '94 has had an incredible record over the past 6 years. They were undefeated as 7th and 8th graders. As freshmen on the JV squad, their record was 7-1. As JV sophomores, they dominated the opposition (8-0). Last year, as varsity members, the team went 10-1-1, losing only in the semifinal game of the State Championship playoffs.

As seniors, their record is 12-0. The Flying Dutchmen are the only undefeated team in Class C. This Friday they are playing in the final game, at the Silverdome, for the State Cham-

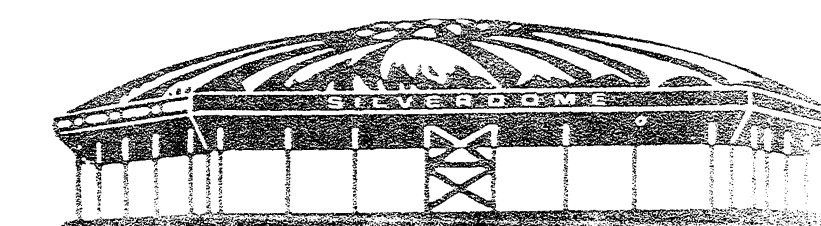
pionship in Class C. To get there, they defeated Brown City in the semifinal game, November 20.

continued on page 9

Tickets for the Silverdome can be purchased at the high school office or at the Silverdome. Tickets are \$7 each.

Manchester will be sitting in sections 129, 130, 131 and 132. This is on the Press Box side at the west end of the stadium. A student fan bus will be leaving the high school at 2:00 p.m. The cost is \$3 per person. Adult chaperones are welcome.

Bring your hand-held flags (no flag poles are allowed in the stadium) and wear maroon and gold. The stadium also does not allow noise-makers, horns, etc. or confetti. Banners and large flags will be displayed.



Class C Title Game

Friday, November 26, 5:00 p.m.
Charter buses will leave Klager El School at 2:15. Reservations must be made by 5:00 Wednesday, Nov. 24* at Great Lakes Bancorp, 428-8379 or 428-8370. The cost is \$13.50/person

*Late reservations: You may check Friday morning to see if space is available

FRIDAY - after the game - the police department will escort the team home from I-94 and M-52 to Pleasant Lake and M-52. At that point the Manchester Fire Department will escort the team to the village. They will turn left at the Main Street corner, go past the high school to Division St., right to City Rd., back to the four-way stop, down Clinton St., left on Duncan to the American Legion Hall for a reception. The community is invited. There will be sloppy joes, provided by the Legion, with other refreshments provided by the Athletic Boosters.

Also, the community is asked to turn on their porch lights to welcome the Dutch home.

Fall Sports Awards Night
Tuesday,
November 30
7:00 p.m.
at the
high school

Inside This Issue

From the Ground Up	Page 2
Chamber Visits Plastics	Page 3
Letters to the Editor	Page 4
Local Government	Page 5
Senior Citizens News.....	Page 6
Board of Ed Summary	Page 7
Church News	Page 8
Salute to the Dutch	Pages 9-12
Ford Legacy by Angie Carlson.....	Page 13
People & Occasions	Page 14
Clubs/Announcements.....	Pages 16/17
Classifieds.....	Page 18
To Your Good Health	Page 19
Briarwood.....	Page 20



Santa Claus is coming to town, and this is his first stop.

Friday, November 19th, 7 p.m.

Introduce the kids to an old friend from up North. Way up North.

Santa's in town. Your kids can come get their photos taken with him, and he has a free gift for each of them.

Also, take part in our holiday sing-along and share the magic of our community tree lighting ceremony.

This annual event highlights all the beauty of the season. Join us, Friday,

November 19, starting at 7 p.m.

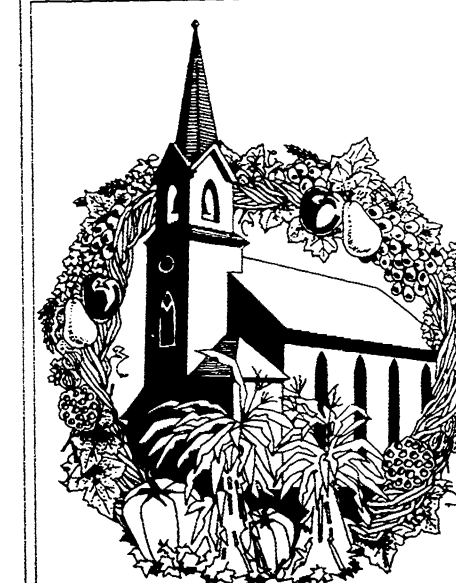
in the Grand Court.

BRIARWOOD
Better Than Ever

Hudson's, Jacobson's, JCPenney, Sears and over 130 other great stores and services. I-94 at State St., Ann Arbor
Extended holiday hours begin November 26, department store hours may vary. (313)761-9550.

Please deliver this copy to THE MANCHESTER ENTERPRISE

Manchester Library
P.O. Box 125
Manchester MI 48150



Wishing you a
happy and safe
Thanksgiving
holiday
The Manchester
Enterprise
Emory,
Kathy,
Lanetta,
Debbie