

THE MANCHESTER ENTERPRISE



The Center of the Universe

125th Year — No 19

Manchester, Michigan

35c per copy

Coach Gall Spearheads Drive for Fitness Center

EWG

In true Manchester tradition, Manchester High School Football Coach and Teacher is spearheading a drive to construct a "Manchester Fitness Center". Wes Gall has received the preliminary blessing from Manchester School Board to proceed with construction of a building to house a multi use fitness center.

Our school system voters turned down a bonding proposal, last June, that would have provided some relief for the over crowding of the athletic facilities. Wes related; "Our athletes have a 16 foot square room in which to condition themselves. This is not enough area and there are no proper facilities for wrestling, storage of mats, place for indoor practice of golf, volleyball, batting cages or indoor work out space. In order for our kids to be competitive and properly conditioned to guard against injury we need proper work out facilities.

We are proposing a separate, multi use facility that could possibly be used by the community at large as well as be open enough that the band could use or dance classes, aerobatics, rehab programs with tread mills and weight conditioning equipment. We need to get the wrestlers and their mats and equipment out of the lunch room."

We would like to build a 60 foot by 100 foot clear span building with 18 foot side walls. The open area would have 9 wrestling mats at one end and the weight machines set up at the other end. Large storage area with a lower ceiling for mat and athletic storage equipment, two rest rooms, small storage closet and an office under a lower ceiling area.

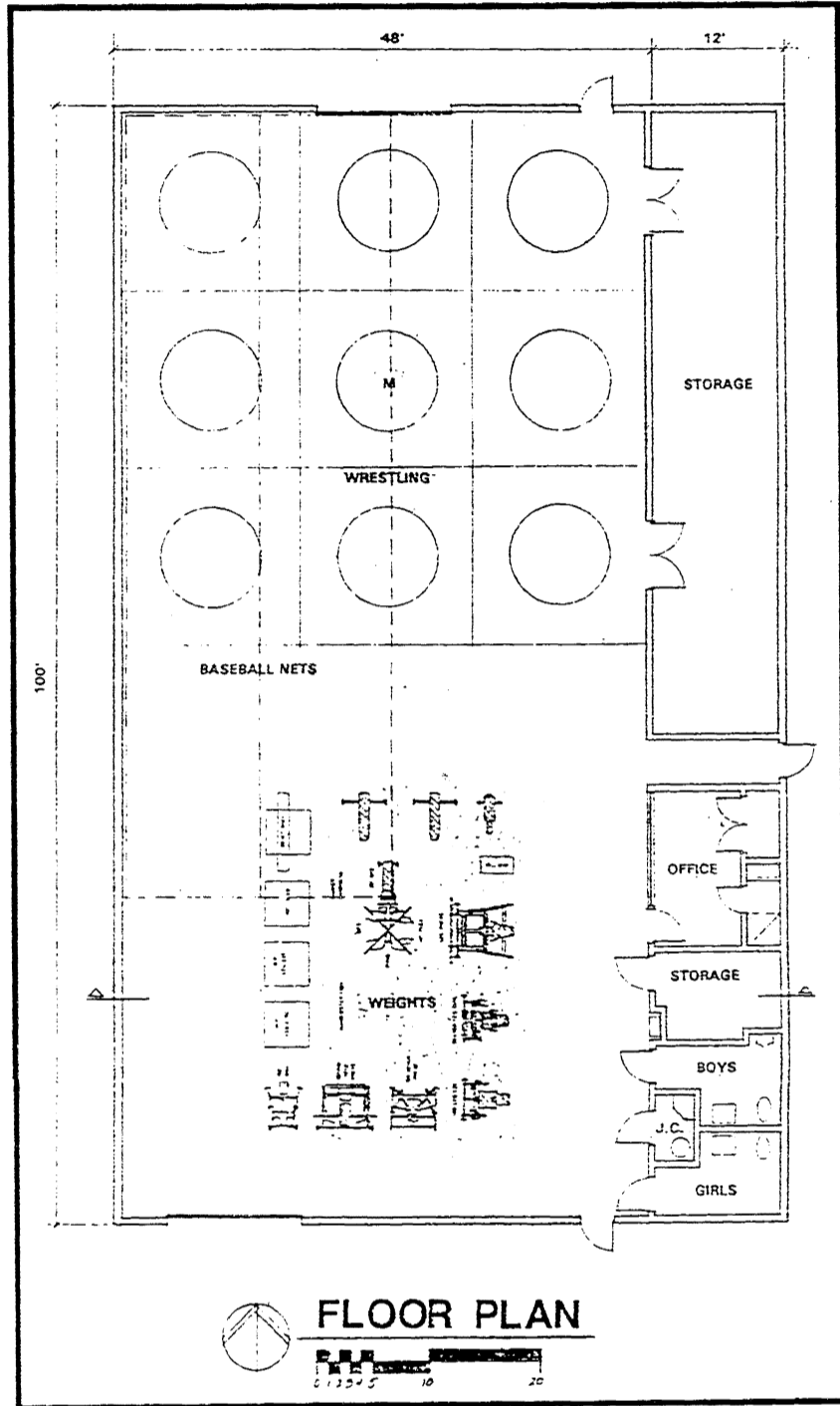
Mr. John Hinkley, of Hobbs and Black is assisting with the building plans. We are projecting about \$185,000 cost. We hope to cover this cost through



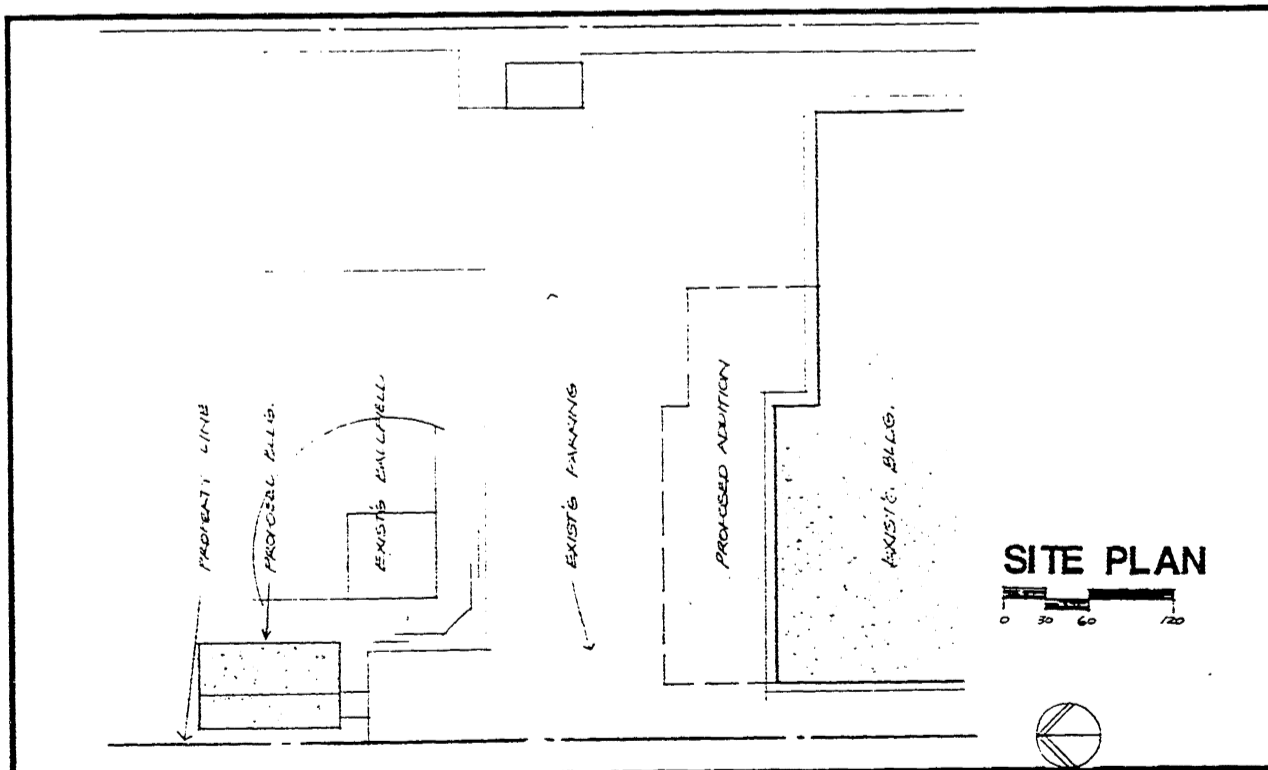
Coach Gall during last falls State football finals.

private donations from individuals and perhaps some foundation funding. We will need to get local contractors and individuals to help with the work to accomplish our task. It won't be easy but I am hoping we can pull this off by Chicken Broil time.

"We need all the help we can get." Knowing Wes and the community this is possible. It sure makes a lot of sense to this writer and I'll bet to the overall community.



Floor plan of the facility



Site location behind the High school

WISD MILLAGE ELECTION TUESDAY, MARCH 9th SUPERVISORS OBJECT TO TIMING

Township Supervisors are unhappy with the Washtenaw Intermediate School District. The timing of the election, when we are holding board of review meetings for people to appeal their valuations is atrocious.

"We don't need to burden the property tax rolls with mandated programs, those funds should come from Federal or State funding sources", according to Doug Parr of Bridgewater Township. Bob Little, Freedom Township, Ron Mann, Manchester Township and John Savage, Sharon Township all thought the Intermediate School District is, "Out of touch with the local voters".

Inside this week's issue of The Enterprise

- Middle School Response to Tragedy.....Page 2
- The Out-of-Bounders.....Page 3
- Letters to the Editor and Out & About.....Page 4
- Club News/Announcements.....Page 5
- Church News/Obituaries.....Page 6
- People & Occasions.....Page 7
- A Successful Science/SS Fair.....Pages 8 & 9
- Local Government.....Page 10
- Young Reporters Corner/School Page.....Page 11
- Sports/Volleyball & Wrestling.....Pages 12 & 13

Please deliver this copy of THE MANCHESTER ENTERPRISE to—
Manchester Township Library
P.O. Box 540
Manchester, MI 48158

COMMUNITY NEWS

MIDDLE SCHOOL STUDENTS WINNERS ONCE AGAIN!!! SPECIAL SCHOOL ELECTION

Eighth Grade Physical Experiments: 1st-Katie Tolen, 2nd-Ryan Fielder, 3rd-Bobby Hayden. Physical Demonstrations: 1st-Ryan Robers, 2nd-Jeff Tyler, 3rd-Nick Baran. Biological Models: 1st-Joe Funk, 2nd-Lin Harris, 3rd-Michael Kessler, HM-Jenny Messing. Physical Models: 1st-Aaron Millheim, 2nd-Michelle Schaible, 3rd-Jill Pfaus, 3rd-Rebecca Koffman, HM-Ceara Brown, HM-Micah Jefferson, HM-David Staten. Biological Experiments: 1st-Renee Foster, 2nd-Emily Miller, 3rd-Nicole Knauss. Biological Demonstrations: 1st-Andrew Supers, 2nd-Sean Clifford, 3rd-Suzanne Lowery.

Sixth Grade Physical Experiments: 1st-Eli Bragg, 2nd-Ahja Zang, 3rd-Julie Porter. Physical Demonstrations: 1st-Sarah Jefferson, 2nd-Erika Komow, 3rd-Peter Schulte. Biological Models: 1st-Angie Makielski, 2nd-Bill Alber, 3rd-Megan Kennedy. Inventions: 1st-James Fuerstmau, 2nd-Traver Lucas. Physical Models: 1st-Jay LeGwin, 2nd-Dea Bisard, 3rd-Lori Anderson. Biological Experiments: 1st-Pat Wilson, 2nd-Levi Smith, 3rd-Michelle Barker. Biological Demonstrations: 1st-Sarah Page, 2nd-Amy Gall, 3rd-Michelle Alber.

Excitement and anticipation filled the Manchester American Legion Hall on Wednesday, February 24, as Nellie Ackerson Middle School students trudged through the cold and waited in the lobby for their time to enter and be judged. Despite the nervousness felt by many, each entered the hall when it was his or her turn and shared some of what was learned during the last several weeks of research and construction.

"Students seem to be better prepared every year," was one judge's comment after completing her part of the tenth annual Nellie Ackerson Middle School Science/Social Studies Fair.

Actually, the first eight years concentrated on science only with social studies added during 1991 - 1992. While the first year's projects were optional for the students, participation has been mandatory for all fifth through eighth graders for the last several years.

This year's fifth and seventh graders could select from social studies categories: Maps, American or World History, Geography Models or Demonstrations, Family Trees, or Inventors and Their Inventions. Science categories for sixth and eighth graders were Biological or Physical Models, Demonstrations or Experiments and Inventions.

A great deal of time and effort goes into this annual event which is part of the Middle School TEEM Program but, as one of the judges commented on his evaluation sheet, "It's a great project for students, staff, judges, community. Keep up the good work!"

Congratulations are extended to all of the students for their hard work and creativity. Grade and category winners are as follows: (See enclosed list) Many thanks go to parents who helped in the setting up of the projects or as supervisors during the class viewings of the displays. These included Helen Fisher, Pat Sahakian, Anne Kornow, Liz Wallace, Rachel Burkhardt, Carol Schulte and Anita Hosmer.

Thanks also to Liz Wallace for videoing all the projects for use during planning time next year.

A vital part of each year's fair is the group of volunteers who share a large amount of time and energy on Wednesday afternoon and evening as they interview and judge the semifinalists who were selected during phase 1 judging on Monday afternoon. Many of the judges come back year after year to take part in this event. Words really aren't sufficient to convey the appreciation we feel for their assistance. Many thanks to this year's judges. (See next page.)

- Nondus Buss

Give a gift subscription to The Manchester Enterprise - just like a letter from home!

NOTICE OF SPECIAL ELECTION OF THE ELECTORS OF MANCHESTER COMMUNITY SCHOOLS, WASHTENAW AND JACKSON COUNTIES, MICHIGAN

TO BE HELD MARCH 9, 1993

TO THE ELECTORS OF THE SCHOOL DISTRICT:

Please Take Notice that the Board of Education, pursuant to a directive from the Intermediate Board of Washtenaw Intermediate School District, Michigan, has called a special Intermediate school district election to be held in the district on Tuesday, March 9, 1993.

THE POLLS OF ELECTION WILL OPEN AT 7:00 O'CLOCK, A.M. AND CLOSE AT 8:00 O'CLOCK, P.M.

The following proposition will be submitted to the vote of the electors at the special intermediate school district election.:

SPECIAL EDUCATION MILLAGE PROPOSITION

Shall the 3.5 mills limitation (\$3.50 on each \$1,000) on state equalized valuation of the annual property tax previously approved by the electors of Washtenaw Intermediate School District, Michigan, for the education of handicapped persons be increased by 1.45 mills (\$1.45 on each \$1,000.00) on state equalized valuation for a period of 5 years, 1993 to 1997, inclusive?

THE VOTING PLACE(S) ARE AS FOLLOWS:

PRECINCT NO. 1

Voting Place: Manchester High School Building, in the Village of Manchester, Michigan.

All school electors who are registered with the city or township clerk of the city or township in which they reside are eligible to vote at this election.

This notice is given by order of the Board of Education of Manchester Community Schools, Washtenaw and Jackson Counties, Michigan.

Bruce Abbott, Secretary, Board of Education COUNTY TREASURER'S STATEMENT

I, Nancy L. Davis, County Treasurer of the County of Washtenaw, State of Michigan, do certify that according to MCLA 21.203 Sec. 3 (3), and the records of this office, as of June 1, 1992, the total of all voted increases over and above the tax voted limitation established by the Constitution of the State of Michigan in Local Units of government affecting the taxable property in Washtenaw County, State of Michigan, in said County as follows:

Table with columns: County of Washtenaw, Bridgewater Township, Freedom Township, Manchester Township, Sharon Township, Washtenaw Comm. College, Wash. Inter. Sch. Dist., Manchester Comm. Sch. and tax rates for 1988 & Future, 1988-1996 Incl., 1989-1993 Incl., 1987-1995, 1989-1998, 1986 & Future, 1987 & Future, 1985 & Future, 1985 & Future, 1987 & Future, 1991-1993, 1988-1992.

Dated: February 16, 1993 Kenneth R. Schwartz

COMMUNITY NEWS

Judging Roster for the 1992/93 Middle School Science/Social Studies Fair

Inventors and Their Inventions-5th and 7th, Judges Paul Kuntzman/Donna Clark

Family Trees/Inventions-5th and 7th/6th, Judges Suzanne Birgy/Ed Bancroft

World Models-5th, Judges Marlene Wagner/Ron Mann

World Demonstrations-5th, Judges John Riske/Mary Harris

Maps/Globes-5th, Judges Reno Feldkamp/Connie Peterson

American Demonstrations-5th, Judges Peggy Paige/Emory Garlick

American Models-5th, Judges Janet Shurtliff/Greg Reed

Physical Models-6th, Judges Bill Kwolek/Patrick Henck

Physical Demonstrations-6th, Judges Bob Laskowski/Jim Achtenberg

Physical Experiments-6th, Judges Wendy Chapin/Clark Spike

Biological Models-6th, Judges Kathy Davis/Beth Vought

Biological Demonstrations-6th, Judges Sallie Anderson/Lynne Cody

Biological Experiments-6th, Judges John Anderson/Charlotte Major

World Models- 7th, Judges Phyllis Heinrich/Connie Bickes

World Demonstrations-7th, Judges Shannon Fleck, Jeff Wallace

American Models-7th, Judges Deb Havens/Judith Henck

American Demonstrations-7th/Maps and Globes, Judges Melinda Trout/Nik Cooper

Physical Models-8th, Judges Don Fowler/David Lowery

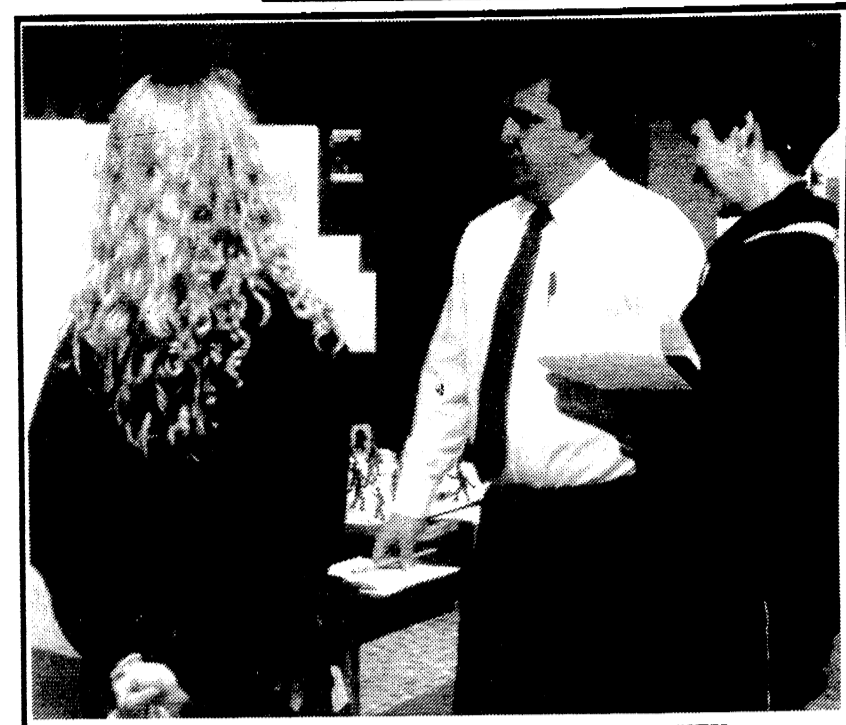
Physical Demonstrations-8th, Judges John Sahakian/Bill Brinkman

Physical Experiments-8th, Judges Bob Vought/Tom Huard

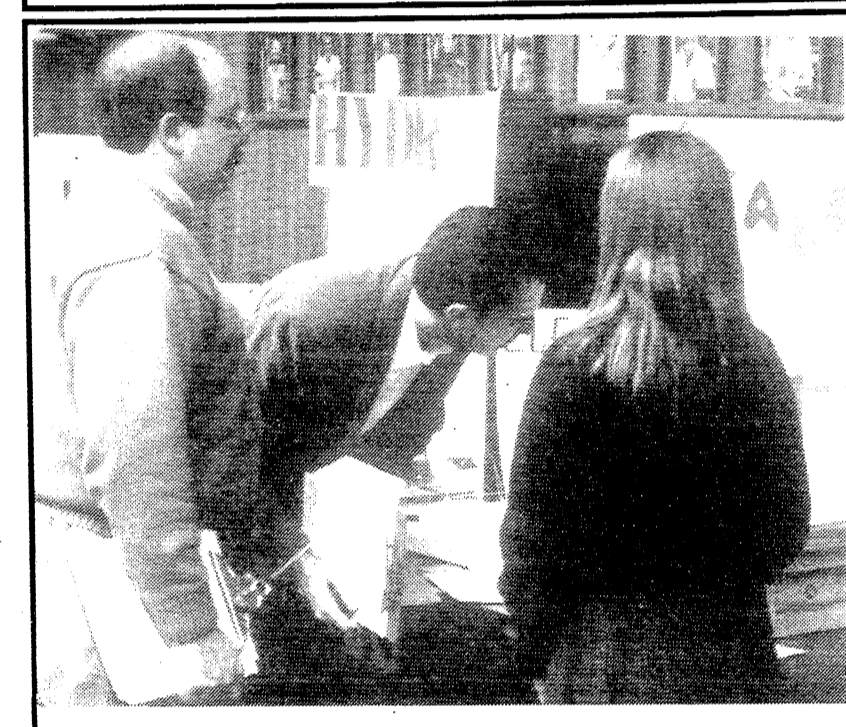
Biological Models-8th, Judges Brad Taylor/Ruth VanBogelen

Biological Demonstrations-8th, Judges Karin McGuire/Bruce Bates

Biological Experiments-8th, Judges Al Currey/Astrida Panches



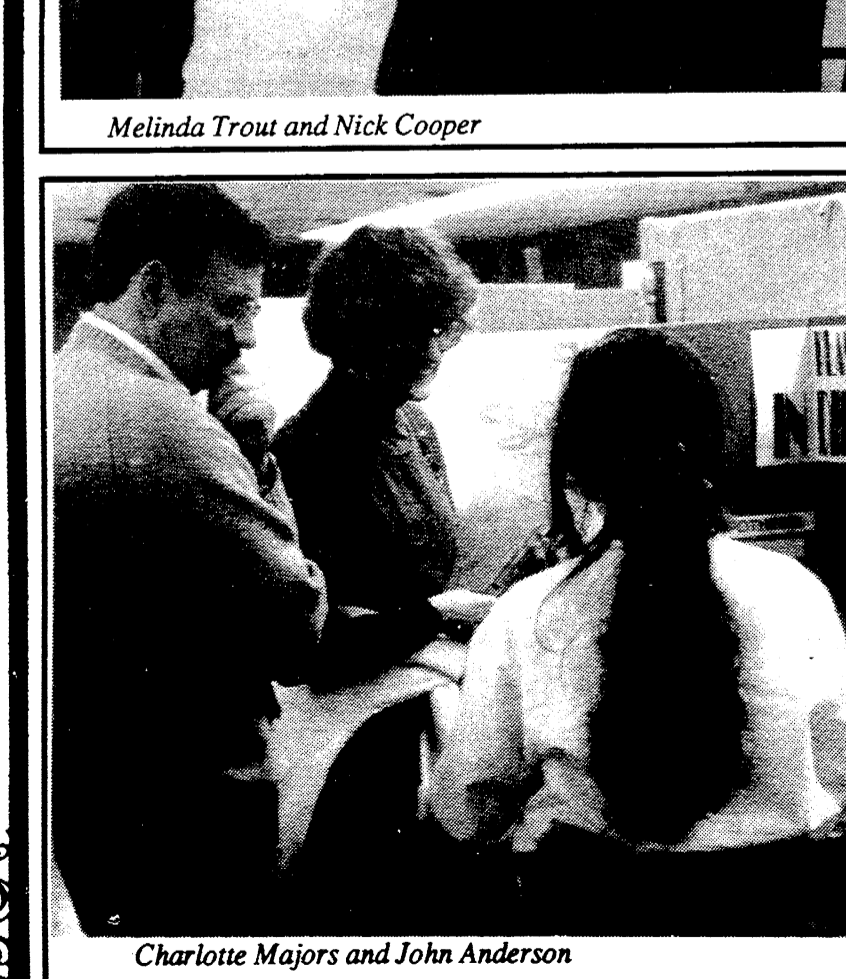
Shannon Fleck and Jeff Wallace. — Photos by WEY



Bill Kwolek (left) and Patrick Henck



Melinda Trout and Nick Cooper



Charlotte Majors and John Anderson



Bob Vought and behind him, Tom Huard, interview Bobby Hayden

BOARD OF REVIEW MEETING

Notice is hereby given to all persons liable to assessment for taxes in the township of Freedom County of Washtenaw, State of Michigan.

That the assessment roll of said township as prepared by the undersigned will be subject to inspection at:

Freedom Township Hall 11508 Pleasant Lake Road

in the said Township, on

Tuesday, March 2, 1993 at 9:00 a.m. Board of Review-organizational meeting

Appeals and Conference with taxpayers will be heard on:

MONDAY, MARCH 8, 1993 9 a.m.-12:00 p.m. and 1:00-4:00 p.m. 7:00-8:00 p.m.

TUESDAY, MARCH 9, 1993 9:00 a.m.-12:00 p.m. and 1:00-4:00 p.m.

Or Appropriate Letter

At which place, and on each of said days, said Board of Review will be in session, and upon request of any person who is assessed on said roll, or if his agent, and upon sufficient cause being shown, said Board of Review will correct the assessment as to such property in such manner as will in their judgement make the valuation therefor relatively just and equal.

Such assessment tax roll as reviewed and approved by said Board of Review will be assessment roll of said Township of Freedom for the year 1993.

Agricultural-Reappraisal Commercial-46.81 Industrial-48.18 Residential-Reappraisal Development-0

ROBERT LITTLE, SUPERVISOR

FABULOUS FRIDAY NIGHT FISH FRY at Manchester's

Country Cafe

9610 M-52 (next to Michigan Livestock Exchange)

ALL YOU CAN EAT \$4.95

Home Cookin' at its best!

Closed Menu. Every Friday night 5pm-8pm

THE MANCHESTER ENTERPRISE

The Center of the Universe

125th Year — No 20

Manchester, Michigan

35¢ per copy



Women's Night Out Looks at "Being Your Own Person"

"Being Your Own Person" is the topic of the Women's Night Out for the Health of It dinner-lecture program to be presented by Sandra L. Samons Tuesday, March 16, at Travis Pointe Country Club, Ann Arbor.

Samons's presentation will focus on self-actualization, and what it can mean in a woman's life. It will encourage participants to re-examine their self-perceptions and roles and to

consider the health of their self-esteem. It will also deal with the ability to define one's own boundaries and appreciate the boundaries of others, as well as the ability to be appropriately assertive.

Samons is a native Ann Arbor resident with a private clinical practice. The program is sponsored by Saline Community Hospital.

Registration and social will begin at 6 p.m. with dinner at 6:30 p.m. and the presentation at 7:30 p.m. The cost of \$21 per person includes dinner.

Reservations are required by Friday, March 12. For more information, call 429-1555.

Saline Community Hospital is a unit of Catherine McAuley Health System, a not-for-profit health care provider based in Ann Arbor, Michigan.

Note: The correct date is Thursday, March 18. An earlier release stated the date as March 11. Please note correct date of Thursday, March 18.

Cholesterol Screening Provides Total, HDL Numbers

Saline Community Hospital will offer cholesterol screening from 4 to 7 p.m. Thursday, March 18, at

Saline Recreation Complex, 1866 Woodland Drive, Saline.

The process has been revised from a finger prick that gives you only total cholesterol to a vein puncture that provides total and HDL (the good number) numbers mailed to you within three working days. Fasting is not required.

Joyce Van Ryn, RN, of hospital's Education Department, said the process was revised because many people are watching their cholesterol numbers now and want the more detailed analysis.

High cholesterol is one of the three major risk factors for heart

disease. Often, cholesterol can be controlled through diet and exercise.

The fee is \$12. No appointment is necessary. For more information, call 429-1636.

Saline Community Hospital is a unit of Catherine McAuley Health System, a not-for-profit health care provider based in Ann Arbor, Michigan. Other CMHS units include St. Joseph Mercy Hospital, McPherson Hospital in Howell, and outpatient facilities in Washtenaw, Livingston and western Wayne counties.

FUND RAISING

Manchester Sportsman Club
8501 Grossman Rd.
Friday 6:45 p.m.

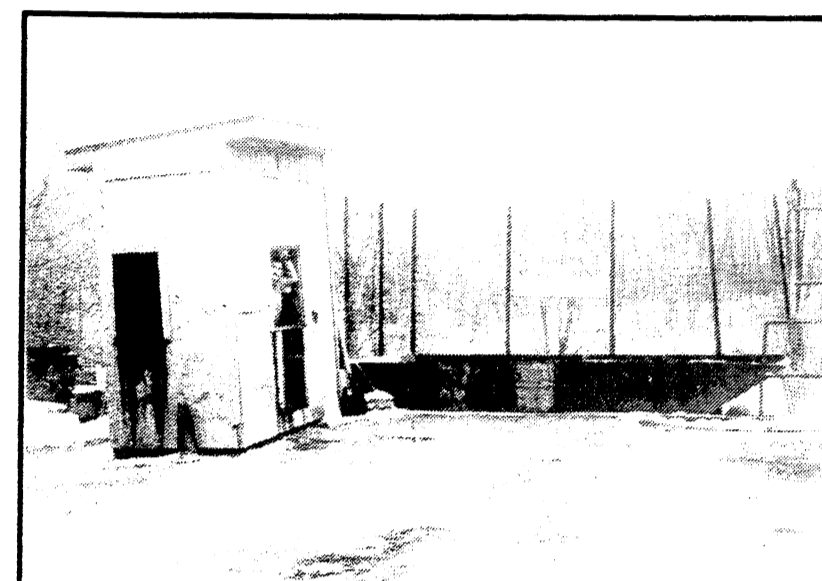
Manchester American Legion
203 South Adrian
Saturday, 7:00 p.m.

DENTURE PATIENTS

The Dental School is seeking denture patients to have upper and/or lower dentures made at a reasonable cost. Free examinations will be provided by staff dentists on March 24, 31, and April 7, 14, and 21 with treatment beginning in May or July. A \$26 fee for X-rays will be charged. For an appointment, please call (313) 764-1516.

M University of Michigan School of Dentistry

TRANSFER SITE TO CLOSE



Emory Garlick The Transfer site located at the corner of Geiske and Parr Roads will close at the end of March. For the Township residents of Bridgewater, Freedom, Manchester, Sharon and the Village of Manchester the transfer site will be no more. Those Saturday excursions when the refuse from the garage, house and barn had to be disposed of we visited John Webber and the transfer site.

Maybe you had some old furniture, used car tires, old bed springs or mattress, maybe just some junk that there was no place to get rid of the unwanted materials. Did you have some old sheet metal gutters that had to be replaced and the transfer site was available. No longer will you be able to haul the junk to the transfer site.

Mr. Robert Little from Freedom Township said the average monthly cost to Freedom Township residents ranged around \$350.00 and in December only \$90 was generated in fees. According to Bob: "We simply cannot justify using hard earned taxpayer dollars to dispose of trash. We are contemplating a spring and fall pick up with a private hauler."

Mr. Ron Mann of Manches-

ter Township said; "Manchester Township Transfer fee costs run about \$1,000 per month. That converts to about \$17 to \$18 per use and the average return is less than \$5.00. The taxpayer's have to supplement the difference. We simply cannot justify this expense. As an alternative we have asked for bids from some of the private haulers in the area.

Some of the possible solutions are for a spring and fall clean up day to get rid of the bigger items. Maybe we can have a truck at a central location for township residents.

Private industry picks up for as little as \$1.80 per bag, hopefully we can find a solution."

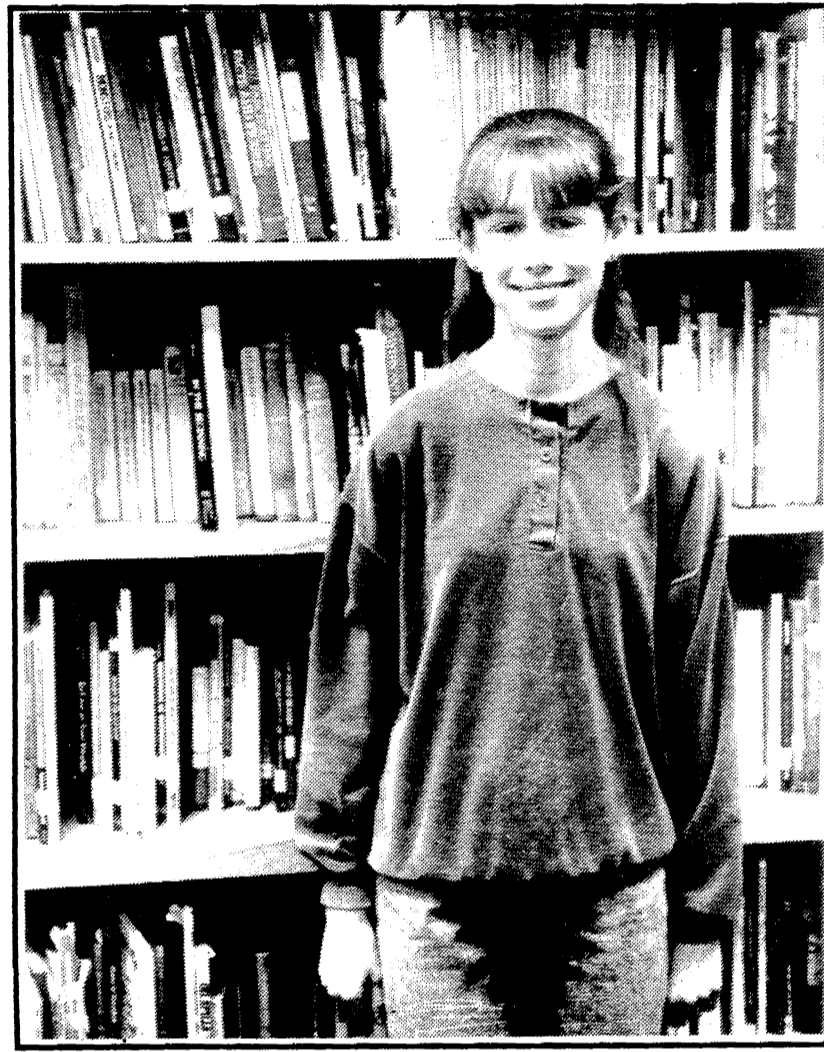
Middle School Student "Spells" Right!!!

Rebecca Koffman, 8th grade daughter of Marion and Marc Koffman, moved up another rung on the spelling ladder of success when she won the Area H competition in the Lawrence Technological University/Detroit News 1993 Spelling Bee. This was held at Whitmore Lake High School on Wednesday, March 3, 1993.

As a result of this win, Rebecca will compete with the winners of Michigan's other Area Bees at Lawrence Tech on Tuesday, March 30. The winner of that bee will receive a sightseeing trip to Washington, D.C. and the chance to represent Michigan at the Scripps Howard National Spelling Bee and compete for prizes that total more than \$30,000 in cash.

Rebecca reached the first rung of success when she became the 8th grade winner in the Grade Bees held on December 9, 1992. Other grade winners were: Erin Wiley - 5th grade, Brandon Brown - 6th grade and Kevin Haessler - 7th grade.

These winners, along with the other grade semi-finalists: Christina Abbott, Ginger Taylor, Sara Cooper, Kevin Sahakian, Nicky Puscas, James Fuerstau, Meghan Wilson, Jessica Weber,



Elise Geyer, Alyssa Chartrand, Ben Pietrowski, Bryan Piendel, Hydy Paige, Jacob Klein, Joe Funk, Katie Tolen, Jill Pfau and Renee Foster then competed in the School Bee on January 12.

Rebecca took her next step up the ladder as she became school winner. Students and staff of Nellie Ackerson Middle School are wishing her well and cheering her on as she continues to study lots of very difficult words in her quest to climb to the top of the spelling ladder of success.

CONGRATULATIONS REBECCA!!!!!!

Winners of Essay Contest, "America and Me"

Three students from Nellie Ackerson Middle School in Manchester were named local winners in the 24th annual America & Me Essay Contest (see Enterprise article in February 11 issue).

In the adjacent photo are the three students who earned the first, second and third place awards: Jason Miner (left) first; Colleen K. Geyer (center) second; and Michelle Schaible (right) third. Their award-winning essays can be read in this issue of The Enterprise on page 3. All three will be formally presented award certificates for their achievement.

As the school's first place winner, Jason Miner's name will also be engraved on a plaque for permanent display in the school.

Jason's first place essay now advances to the state level competition, from which the top ten essays in Michigan will be selected. The top ten statewide winners, who will be announced in May, will receive plaques and U.S. savings bonds valued from \$500 to \$1,000.



In addition, the top ten essayists will be honored at a banquet in Lansing and at a meeting with Michigan's top governmental leaders in late May.

A team of finalist judges that includes top governmental leaders will determine the top statewide winners.

Inside this week's issue of *The Enterprise*

- MHS Response to Tragedy Page 2
- Award Winning Essays Page 3
- Our Readers Write Page 4
- Young Reporters Corner Page 5
- Community News Page 6/7
- Church News Page 8
- Sports Page 9
- Classifieds Page 10
- S.A.V.E. Meeting Page 12

Please deliver this copy of THE MANCHESTER ENTERPRISE to:
Manchester Township Library
P.O. Box 540
Manchester, MI 48158



Enter Johnson's baby Adorable Babies Photo Contest

Johnson & Johnson

Kling Gauze 3"
\$1.59 Johnson & Johnson Steri Pads 3" x 3" 10's or Non-Stick Medium Pads 10's\$1.19 Johnson & Johnson Coach Sports Tape 1/2" x 10 yds.\$1.88

Purpose
Moisturizer 4 oz.\$6.19 Soap 3.6 oz.\$1.66 Soap 6 oz.\$2.44 Cream 3 oz.\$4.39 Cleansing Wash 6 oz.\$3.88

Band-Aid Brand
One Size or Assorted 40's ...\$1.66 Sheer Assorted 60's\$1.66 Sheer Assorted 80's\$1.79

Johnson & Johnson
First Aid Tape 1/2" x 5 yd.\$1.19 Compact First Aid Kit\$4.29

Johnson's Bathtime Buddies
Pooch's Shampoo, Eeyores Conditioning Detangler, Tigger's Bath Bubbles, Piglet's Liquid Bath, 13.5 oz.
\$2.69

Shower to Shower
8 oz. Original, Morning or Spring Formulas
\$1.88

Johnson & Johnson
K-Y Jelly 3 Pack
\$1.49

Manchester Pharmacy
128 E. Main St. Manchester
428-8393

Sale runs through March 17
*Watch for our increasing line of products and services

CLAIMS NOTICE
Independent Probate State of Michigan Probate Court County of Washtenaw
File No. 92-100,384-IE
Estate of MILDRED YORK SMITH, DECEASED
377-34-7055

Your interest in the estate may be barred or affected by the following:

The decedent, whose last known address was 805 W. Middle Street, Chelsea, Michigan 48118 died 11/10/92.

Creditors of the deceased are notified that claims against the estate will be forever barred unless presented to the independent personal representative, FLOYD SMITH, JR., 7936 Willis, Ypsilanti, Michigan 48197 or to both the independent representative and the Washtenaw County Probate Court, PO Box 8645, Ann Arbor, Michigan 48107, within 4 months of the date of publication of this notice.

Notice is further given that the estate will be thereafter assigned and distributed to the persons entitled to it.

KEUSCH AND FLINTOFT, P.C.

Attorneys for the Estate
PETER C. FLINTOFT
P-13531
119 South Main Street, P.O. Box 187
Chelsea, MI 48118
(313) 475-8671.