

THE MANCHESTER ENTERPRISE



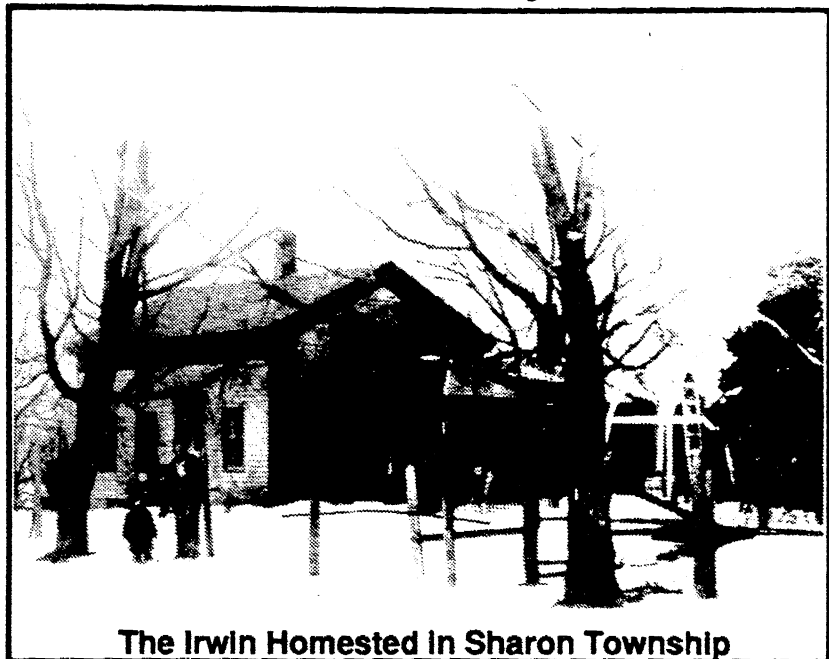
The Center of the Universe

125th Year — No 11

Manchester, Michigan

35c per copy

Down Memory Lane



The Irwin Homestead in Sharon Township

John Emory Irwin, Grandfather of Donald Irwin, Sharon Township resident enlisted in Michigan State Service, Civil War, July 27, 1862 and was mustered out May 30th, 1865. John and his brother James Leman Irwin, who was fatally wounded June 18, 1864, served the Union Forces.

We have used various letters in the past and we are indebted to Don for sharing John's letters with us. The Civil war was a very tumultuous time in the history of our Country and we hope some of these letters convey those times in our Nations history.

Near Falmouth, Va., January 1, 1863.

Dear Mother -

I wish you a Happy New Year and all our folks and as I have spent it rather happily, I'll write you a letter yet before the mail goes out, if I can, for I begin to realize how well you must like to hear from us.

Leman is putting up a log shanty today, to make his quarters more comfortable and home like, though nothing can make a soldier's camp appear like the home he left behind him.

I wrote you when I first got here and Leman wrote about the same time, and I believe I wrote again shortly after, and this makes the third. Your letters don't get stale, do mine? I always wish they were as long again and came as often again; do write as often as you can, or at least as often as you get one from us. The only aggravation is that it takes so long to get an answer direct

to the letters we write.

I got a shirt and pair of drawers washed, and a pair for Horace, the other day, paying 25 cents as they were all long worn. We can't get any thing here without paying for it. We had an excellent New Year's dinner consisting principally of bean soup, boiled meat, toasted hard tack and a little butter, and then we had cold gander for supper --- or rather the remains of our dinner -- and I spliced mine out with a few high priced apples and a little cheese.

I spent part of the afternoon over at the 17th. I saw Maltman and Pyron Fellows and George Hathaway and withal, had a very good visit. The 79th New York Highlanders are also in our Brigade and lay within forty or fifty rods of our camp, as is also the 8th Michigan. Horace hasn't heard from his folks and he begins to feel uneasy and I can't help but think how often ten days intervene between the letters i get from home. But I don't mean to complain too much; I know you're very busy and Father don't pretend to write to anybody. Just now I suppose I'm in peculiarly happy circumstances. I've nothing under the sun to do but cook my own victuals and eat them and as my appetite is pretty good the last operation isn't attended with any very disagreeable sensations.

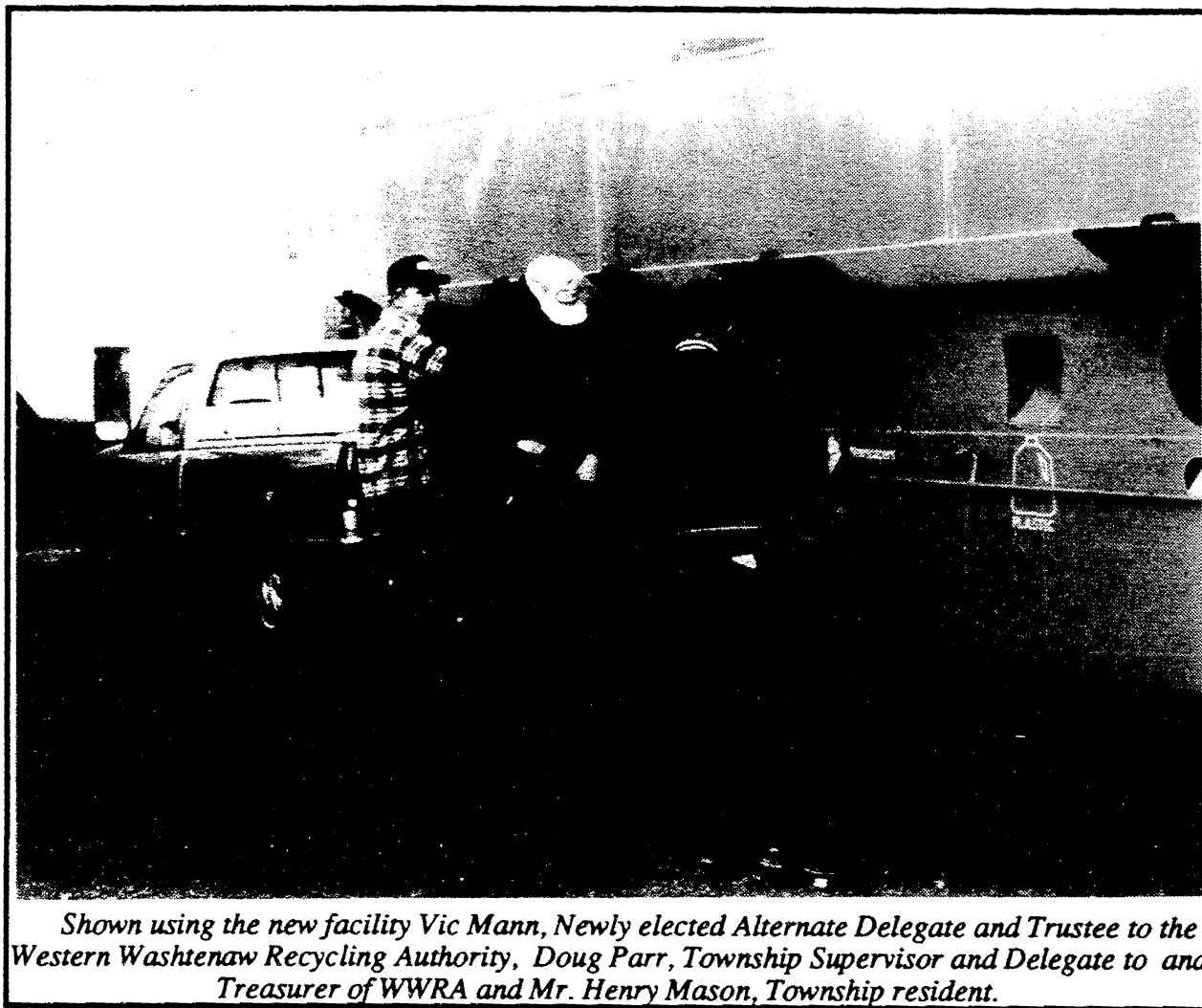
I saw Jake Benzler of the 4th Michigan, the other day, he came to my tent and made quite a visit. He was well and hearty, though he has seen some pretty hard fare. Please send me a pocket calendar for 1863. I wrote you of the promotion of Capt. Cutcheon and on Christmas day both of ours were promoted and S. H. Rowe to 2nd Lieutenant, which relieves him of the labor a very hard post and gives him a very easy one with quite an increase of pay. I think of nothing else. Excuse my short letter and write often.

Yours Affectionately,
E. J. Irwin

The poor blacks are to be free from today, I suppose, according to the President's message. I rejoice at this for them their liberty yet, it is now committed to a policy which secures them from its oppression. We were mustered for pay yesterday, but we have been mustered before for pay since we came down here and we don't expect pay yet; whether we get any the future must develop:

Write often.
Yours, E. J. I.

BRIDGEWATER TOWNSHIP INITIATES RECYCLING WITH NEW STORAGE BIN



Shown using the new facility Vic Mann, Newly elected Alternate Delegate and Trustee to the Western Washtenaw Recycling Authority, Doug Parr, Township Supervisor and Delegate to and Treasurer of WWRA and Mr. Henry Mason, Township resident.

Western Washtenaw Recycling Authority to Hold Grand Opening of MRF

The public is invited to attend the Western Washtenaw Recycling Authority's (WWRA) grand opening of its Materials Recovery Facility (MRF) at the Chelsea landfill on Werkner Road on Saturday, January 16, 1993 from 10:00 a.m. - noon. A ribbon cutting ceremony will include the local Authority board and management, officials from State and local governments and the Department of Natural Resources (DNR) and the Authority education committee. Special activities will also be held from noon - 2:00 p.m. at the nine drop-off sites located in Bridgewater, Dexter, Lima, Lyndon, Manchester and Sylvan townships.

This event will be the official launch of the area's recycling program which is funded by a \$400,000 grant from the State of Michigan, Solid Waste Alter-

natives Program (SWAP) and a special assessment to local residents. The grant was obtained by the villages of Chelsea and Manchester and Bridgewater, Dexter, Lima, Lyndon, Manchester and Sylvan townships to implement a cost-efficient recycling program.

The villages of Manchester and Chelsea have had curbside recycling since this summer. Residents have been able to put their glass and cans in recycling buckets at the curb for pickup. This will continue with pickup every Wednesday. Township residents will have one or two drop-off sites located in their communities

Both the MRF and drop-off sites will collect the same materials: clear, green and brown glass; steel cans (ones that attract a magnet); plastic with the

number 2 in a triangle on the bottom; and newspapers with all the glossy inserts removed. Anyone who brings their recyclable's to the MRF or the drop-off sites during the grand opening, will receive a coupon for \$.25 off a gallon of milk. Eight area merchants will participate, Chelsea Pharmacy, Pollys Market, North Lake Party Store, Walco Foods, Schneiders Grocery, Portage Lake Trading Post and Vogel's Party Store. Volunteers will be at the MRF between 10:00 a.m. and noon and the drop-off sites between noon and 2:00 p.m. to assist residents with any questions and distribute the coupons.

"Educating the residents is a key element to the success of our program", stated Sybil Kolon, Ed. Committee Chair.

Manchester behind Walco's. Bridgewater, next to the Bridgewater General Store.

Manchester Village Planning Commission to Review General Development Plan Revisions

Manchester Village Planning Commission at their next regular session, Tuesday, January 12, 1993 may adopt the Revised General Development Plan.

CONT. SEE PAGE 12

In this week's Enterprise

Klager Kids	Page 2
Building a House	Page 3
Ed / Opinion	Page 4
School Page	Page 5
Club News	Page 6
People and Occasions	Page 7
Church News	Page 8
Sports	Page 9
Classifieds	Page 10
Local Government	Page 11

Please deliver this copy of THE MANCHESTER ENTERPRISE to—

Manchester Township Library
P.O. Box 540
Manchester, MI 48158

Editorial / Opinion



Dear Manchester Enterprise Editor,

I am President of the Washtenaw County Vietnam Veterans of America, Chapter #310. We are a chapter of the only congressionally recognized national Veterans organization that deals specifically with Vietnam Veterans and the issues pertaining to them. We need some help to grow.

We were chartered in the Spring of 1987. We currently have just over 100 members. They live in every community in Washtenaw County. We do not have our own meeting place, but we think that we have been and are the most active Veterans organization in the county. We march in most of the patriotic parades in the county throughout the year. We do many community-oriented things, like providing food and clothes for needy veteran families, build wheel chair ramps, put on the largest entertainment show at the Ann Arbor VA Medical for the hospitalized veterans each year, built the county Vietnam Veterans Memorial, etc. There seems little that we cannot accomplish once we make it a goal.

We want to do more for our community. And we could, if

we could increase our membership. For the most part up to now we have depended on word of mouth and our participation in events around the county to do that. And our membership has remained a consistent 100% plus members. Even after five solid years of being active in the county, we continue to hear people say that they have not heard about our Chapter. We need growth to do more and I think you could play a significant role.

Please, we request your help to inform your readers about our organization.

We meet at the Ann Arbor VFW Hall, located at 4595 Platt Road, between Ellsworth and Michigan Ave. Our meetings are on the second Sunday of each month at 5:00 p.m. Everyone is invited to attend, maybe you

The Manchester Enterprise welcomes letters to the editor. Letters must be signed and, unless special consideration is warranted, only those letters with valid signatures attached will be considered for publication.

The Enterprise reserves the right to edit letters.

would like to take the time and check us out. We are a family oriented organization. Our membership is made up of Vietnam-era Veterans and concerned Associate members.

Please call (483-6133) with any questions up to 3:30 p.m. any day.

Very Sincerely, Tom Fifield
Chapter #310 President

A salute to the Bihlmeyer family — Nancy and John and their elves — for the extraordinary Christmas Eve luminaria display along Schneider Road from Bethel Church to Bemis Roads. It was beautiful, a rural Christmas runway of lights that the Bihlmeyers created in the season's spirit of sharing and giving.

And, a kick in the seat of the pants to the motorist who intentionally and wantonly spoiled the scene by running down some of those wonderful lights before dark and before too many of us could enjoy the sight.

— The Scherdt family

OUT & ABOUT

by gar

A friend recently gave me a small framed verse that has some very profound thoughts. I wish to share this with you. The author is unknown and is not on the print.

"One Day At A Time

There are two days in every week about which we should not worry; two days which should be kept free from fear and apprehension.

One of these days is Yesterday, with its mistakes and cares, its faults and blunders, its aches and pains. Yesterday has passed forever beyond our control. All the money in the world cannot bring back yesterday. We cannot undo a single act we performed; we cannot erase a single word.... Yesterday is Gone!

The other day we should not worry about is tomorrow with its possible burdens, its large promise and poor performance. Tomorrow is also beyond our immediate control; Tomorrow's sun will rise, either in splendor or behind a mask of clouds.... but it will rise. Until it does, we have no stake in Tomorrow, for it is yet unborn.

This leaves only one day... Today! Any Man can fight the battle of just one day. It is only when you and I have the burdens of those two awful eternities, Yesterday and Tomorrow.... that we break down.

It is not the experiences of Today that drives men mad... it is the remorse or bitterness for something which happened Yesterday and the dread of what Tomorrow may bring.

Let us, therefore, live one day at a time."

HAPPY NEW YEAR TO ALL, GOD BLESS.

TIRB CHEVROLET HAS

SPECIAL \$4.00 off Discount Tickets available — while they last — for the International Auto Show at Cobo Hall January 9 through January 17, 1993.

We also have \$3.00 discount tickets —while they last — for the Mud and Monster Truck Racing Championships at the Silver Dome January 9, 1993.

TIRB CHEVROLET
MANCHESTER, MI

DON'T GET DISTURBED, SEE TIRB

C. Schmitt Roofing & Siding

• Licensed and Insured •

All types of roofing, siding and repairs

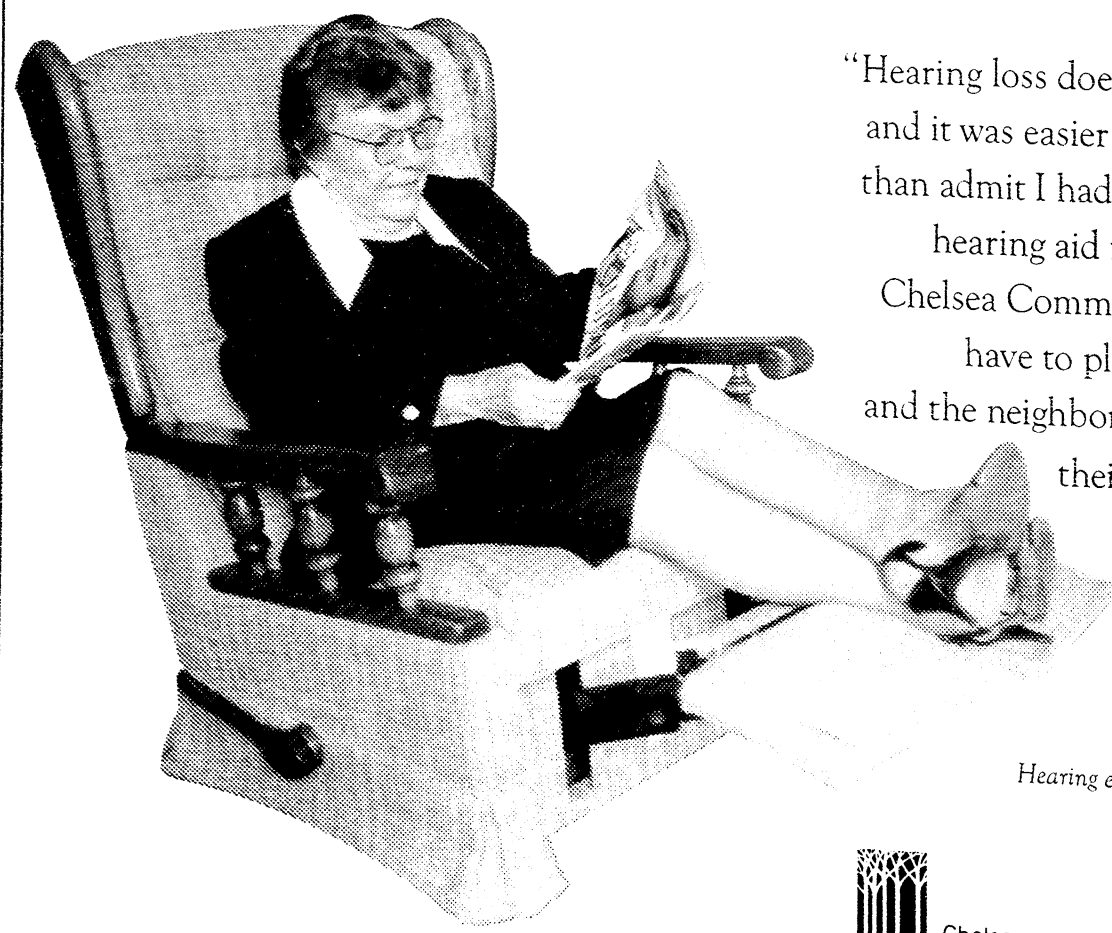
• 5 year guarantee on all labor •

Quality materials and workmanship

(313) 428-8178

Corey Schmitt • 7940 Ernst Road • Manchester, Mi. 48158

"When the neighbors started hearing our TV instead of their own, it was time for me to get help."



"Hearing loss doesn't happen overnight, and it was easier to turn up the volume than admit I had a problem. But with a hearing aid from the audiologist at Chelsea Community Hospital, I don't have to play the TV full blast... and the neighbors are back to watching their own TV sets again."

Life can sound oh, so sweet: call 313/475-3962.

Hearing evaluations and hearing aid fitting by Deborah Olsen, MS, CCC-A Certified Audiologist



Chelsea Community Hospital

THE SCHOOL PAGE

Board Perspective

by John Hochstetler

Today our children's education is more important than ever before. Our children will become the grandparents to the people of the 22nd century! With technology exploding, stiff world marketing competition and the need for highly skilled workers, our children's education must be second to none.

First, our children need a firm foundation of the basics, READING, WRITING and MATHEMATICS. This foundation will provide a base to build their rock, composed of knowledge and wisdom. The classes in junior and senior high school are the major components of this rock.

Second, we need highly devoted, skilled teachers. Teachers who work with their students. Teachers who care about their students. Teachers who communicate with their students and teachers who can inspire their students. Today, we are fortunate to have many great teachers that possess these qualities.

Third, we need the most important part of education for our children. It is not programs, buildings or teachers. It is the parents. The parents of the child have the most power and responsibility in educating a child. What is important to the parent is important to the child. What a parent does is what a child does. You see, things are not taught to children they are caught by children. Remember when you were a child — something in one sentence your parents said—the words hit you and you can remember to this day. You were not taught it you caught it.

What minor points do you make? What values, beliefs and priorities do you convey? Big and small things children secretly pick up. What pants pocket you keep your change in? What pocket does your child keep change in? What you communicate and focus on

that's important to you is important to your children.

Is your communication focused on work, boats, new car? Then your children will catch that. To visit the school one or two times a year and 363 days a year not mention it, discuss it in a positive way, or stop by school to see how things are going with your children—guess what they catch—that's right, education's not important! What a tragedy.

The highest taxes, the best buildings, and the newest books can be for naught. Do you see how important a parent is? Nothing can compare with a parent that cares. Do you really care about your child's education? Invest in your child's education. Talk to them, ask of them, communicate with them, come to school with them, and be with them. Get involved in school. Put your heart in school for where your heart is, is where you will be and your children right behind you. Lead the way, for the children of the 22nd century want and deserve wonderful great-grandparents. Your children need you!

I wish you well, my friends. (Manchester Community Schools newsletter, December issue)

School Lunch Menu

Monday, January 11: Chicken Patty on Bun, French Fries, Dill Pickles, Pear Half, Milk

Tuesday, January 12: Boneless Rib-B-Q, Bagelette & Butter, Scalloped Potatoes, Sliced Carrots, Fruit Cocktail, Milk

Wednesday, January 13: Tomato Soup/Crackers, Folded Grilled Cheese, Carrot Sticks, Fruit Sherbet, Milk

Thursday, January 14: Beef Goulash with Cheese, Dinner Roll, Butter, Vegetables, Applesauce, Milk

Friday, January 15: Cottage Inn Pizza, Tossed Salad with Dressing, Fruit, Milk

What every young driver desperately needs to know

Every week, auto accidents wipe out the equivalent of an entire senior class at a typical American high school. More than 6000 people between ages 15 and 20 are killed on roadways each year.

Alcohol is often assumed to be behind the shocking statistics. But in two-thirds of the cases—including the ones that follow—drinking plays no role. Instead, the culprit is an equally deadly concoction of carelessness, overconfidence and inexperience. Each day many good, decent young people simply make lethal mistakes.

On his 16th birthday, Greg Burris saw a dream come true. His parents presented him with his mother's five year-old Chevy Blazer. The gift culminated many happy years shared by the Burris and their son—including his record as a dependable and well-respected student at Lincoln High School in Tallahassee, Fla.

As a new driver, youngster proved to be as reliable as his parents had hoped. He was always home by his curfew.

The Burris were proud of their son. The gift of the Blazer was a tangible expression of their trust in this boy who, to them, was so big-hearted and squared-away that life's possibilities seemed limitless. On the evening of Saturday, May 9, 1992—one day after his 17th birthday — Greg did not come home from a baby-sitting job at the agreed hour of 11 p.m. A little later, irritated, Greg's father drove by the house where his son had been. It was dark.

Returning home, Paul noticed a patrol car parked in the shadows across the street. He watched as a trooper walked slowly toward him. Paul was suddenly jolted by the sickening realization that his life had changed forever. "I'm sorry," the trooper said, "but your son's been in a fatal accident." In stunned silence, Paul wondered, *How do you wake your wife to tell her your only child is dead?*

The Florida Highway Patrol helped the couple piece together what had happened. Greg's babysitting ended at 10:30. Since he wasn't expected home until 11, he went for a spin in his beloved Blazer. On Interstate 10, Greg passed a tractor-trailer at 10:45. The truck driver estimated the Blazer's speed at 65 m.p.h., the legal limit. Suddenly, inexplicably, the Blazer veered left and slammed into a guardrail, then a concrete wall. Swinging sharply to the right, it crossed two lanes, hit the grassy right shoulder and flipped over several times, before landing in a sea of broken glass.

Usually diligent about wearing his seat belt, Greg did not have it buckled when he needed it most. He was thrown around inside the Blazer like a rag doll in a spin dryer. Flung through the windshield, he landed 100 feet beyond the car, face down. Every bone in his right rib cage was broken, his lungs, diaphragm and liver were

Financial Aid Program Available at High School

Each year Grand Valley State University provides Manchester High School with a free computer program called "Financial Aid Need Analysis Program." This easy-to-use program will calculate accurately what a family will be expected to pay for a year of college for their son or daughter.

The program follows the financial aid forms, takes 20-30 minutes to run and requires no previous computer experience. It runs on an IBM or IBM-compatible computer. The financial aid program can be used at the high school or signed out to be used at home or at work.

The Financial Aid Need Analysis Program is a valuable tool in helping parents plan for financing their student's college education. It is especially recommended for parents of seniors who are not sure whether they want to fill out financial aid forms for next year. For these parents it will tell them whether or not completing financial aid forms will be beneficial. It can also be used by parents of seniors who definitely plan to fill out financial aid forms but would like to have a head start in planning the process and finding out where they stand financially. A third group of parents who could benefit from this program is parents of underclassmen who are planning for the future and trying to learn how they can help meet the ever-increasing costs of attending college.

Please call the guidance office (428-8274) to use or sign out the Financial Aid Need Analysis Program or to find out more information about it.

ruptured, the base of his skull was fractured. He was pronounced dead at the scene. What caused the accident? The police suspect a moment's inattention: perhaps he took his seat belt off to fiddle with the CB radio. Whatever the distraction, for one critical moment his mind was not on his driving.

By the time Renee Montoya graduated from high school in Oxnard, California, an ever-changing parade of young men had passed through the Montoya household, seeking her attention. Finally, Renee settled on one suitor, George Mejia a shy, dark-haired youth with a warm smile.

On the afternoon of March 21, 1992, the couple set out for the party. Renee was at the wheel of her mother's small Ford Escort. Very cautious as a driver, she rarely crossed intersections that didn't have a traffic light. She hated high-speed roads. On this day, she was on a typical, frenzied California highway.

Apparently deciding to take a shortcut, Renee left the highway too soon. Realizing her error, she made a U-turn and waited at a stop sign for northbound traffic to pass so she could cross back to the southbound lanes. Her sisters say it is possible that she had never crossed a fourlane road before.

Renee waited for two cars to streak by. Then, mysteriously, she pulled her Escort directly into the path of a Mercedes

cruising north at 65 m.p.h. fast enough to cover a football field in three seconds. Either she did not see it or thought she would be able to beat it no one will ever know.

The Mercedes slammed into the driver's door, bending the Escort into a U shape and throwing it 100 feet down the road. Renee and George died instantly from massive internal injuries and fractures. All three occupants of the Mercedes, held in place by seat belts and air bags, escaped with minor injuries. The Escort looked as if it had been placed in a car crusher at a junkyard.

Stephanie McCue, a sophomore, was oblivious to what was considered "in" by the Hutchinson (Kansas) High cliques, she dressed in unusual hats and gaily colored tunics.

Marlee Bretz was a gifted musician and had won statewide voice, flute and piano awards. The attractive junior planned to become a pediatrician, but she was a talented actress as well.

Lisa Steiner, a sophomore, threw herself into everything with enthusiasm.

On the evening of February 14, 1992, the three girls piled into Stephanie's 1977 Datsun sedan to deliver Valentines to friends. They drove through the moonless night along State Highway 61, parallel to a railroad track they needed to cross.

continued on page 12

OUR GUARANTEED IRA

An IRA from FB Annuity Company guarantees you a lifetime retirement income. You save on taxes, too, because your interest earnings are tax-deferred. You might also qualify to tax-deduct all your IRA deposits. Call today. Making your future more predictable.

FARM BUREAU INSURANCE

LARRY BECKTEL
135 E. Main Suite 200
Manchester, MI. 48158
428-7331

Sixth Annual Swiss Steak Supper

Wednesday, January 20, 1993
at Emanuel United Church Hall

Seatings at 5:00 & 6:30 p.m. Adults \$6, Children 5-10 \$4, under 5 free

to benefit the Muscular Dystrophy Association
Sponsored by Lambda Nu Sorority and Xi Epsilon Iota

Advance tickets available from:
members of Lambda Nu and Xi Epsilon Iota,
The Flower Garden, Keith's Barber Shop,
the Manchester Pharmacy,
the New Comerica Bank, and
Senior Citizen meals

EYECARE

◆ Comprehensive Eye Exams
◆ Contact Lenses Including: Disposable, Frequent Replacement, Gas Permeable, Tinted, and Soft Lenses for Astigmatism All Ages

Bradley Taylor, O.D.
227 E. Main Street • Manchester • 428-8955
"We care about your eye care!"

THE MANCHESTER ENTERPRISE

109 East Main Street
Manchester MI 48158
(313) 428-8173
USPS No. 327-460

The Manchester Enterprise is published each Thursday at 109 East Main St., Manchester, MI 48158, with second class postage paid at the Manchester Post Office.

POSTMASTER: Send Form 3972 to: Manchester Enterprise, P.O. Box 37, Manchester, MI 48158.

The Manchester Enterprise, Inc.

Editor & Publisher
Emory Garlick
Associate Editor
Kathy Kueffner
Sports
Jon Hardenbergh
Front Desk
Lanetta Aldrich

One-year subscriptions are \$15 within Washtenaw County, \$18 outside the county.

Deadline for display ads, photos, classifieds and news articles is Monday at 3:00 p.m.

© The Manchester Enterprise 1992. No part of this publication may be used without the written permission of the publisher.

CLUB NEWS

Scouts Help Move Local Business



Perhaps you've noticed the new location of Jon's Photo Shop and Manchester Labs. The former Enterprise office has been transformed into a retail outlet for Jon Hardenberg's photographic supplies, services and miscellany in tandem with Richard Weir's upcoming overnight photo processing lab. In the best tradition of scouting, Manchester troopers and adult leaders from Troop 426 made the relocation a bit easier. The photo above (left to right) shows Ted Roberts, Dave Sweeton and leader Dave Minick. (Not pictured: Tony Weir).

Upcoming scouting events include an Eagle Scout Court of

Honor for Jeff Hughes on Thursday, January 7th at 7:00 p.m. in the Emanuel Church Hall. Eric Anderson is presently working toward his Eagle Scout Honors.

Manchester citizens can be proud of these two men. Achieving the rank of Eagle is the realization of concentrated effort put forth in mind and body over a span of years.

If you as a parent, are looking for an opportunity to introduce your son to a tradition that values community service, love and respect for nature, honesty, hard work, respect for God and fellow man and good clean fun, call Scoutmaster Ron Schook at 428-7351.

The 125th Anniversary Cookbook is available at The Enterprise, Jan Schmidt's Antiques, the 18th Century Shoppe and the Back Door Party Store. Only a very few left!

The Charles Reinhart Co. Realtors
DEBORAH ENGELBERT
 Sales Associate

2452 East Stadium Blvd. Ann Arbor
 Off: 971 - 6070
 Res: 475 - 8303

PREMIER CONTRACTING INC.

Full Service Residential Building & Remodeling
 "Let us help you with your building plans"



Lots Currently Available

Ron Milkey
 (313) 428-9826

WHAT KIND OF WOMAN ARE YOU?

- High Achiever
- Sing along with the radio
- Goal Oriented
- Love Music
- Like to harmonize
- Love to be with people

If you answered yes to one item in each category, become a member of

Ann Arbor Chorus Sweet Adelines
 ♦ Six Free Group Vocal Lessons ♦

Tuesdays, Beginning **Jan 19** at 7:00 pm
 sing women's four-part harmony

P.O. Box 3247, Ann Arbor, MI 48106
 Phone: (313)769-4247 or 434-4565

Senior Citizens News

— T. V. Ludwick

"Weight has a way of just snacking up on us" is the caption from the Busy Woman Calendar for January. And how we snacked, what fun. Hope you had a snacking good time over the holidays, too. Now for a little extra exercise and restraint from the eating binge and maybe, just maybe we'll feel just a little less sluggish.

Meals begin again for seniors 55 and over on Tuesdays and Thursdays in Emanuel's dining room with Jan tempting our taste buds with a lot more than just her imagination.

Thursday, January 7: You January-born folks will be treated to your special party at noon. You have until 10:30 today to call Jan at 428-7630 to reserve your spot at the January birthday table. The menu includes Swiss steak, birthday cake, candles, song and picture just in your honor.

Monday, January 11: Shopping at Briarwood is planned. Departure time is set for 9:30 and you may go along by calling Erma Alber at 428-8707. That's a good place to get that exercise.

Tuesday, January 12: Come join in at the Senior Council meeting at 9:30 at the Center with all those ideas. Baked chicken a la Jan will be served at noon lunch which is moist, tender and just plain good. Get those reservations in to either Linda (ahead) 428-8359 or to Jan in the kitchen 428-7630 before 10:30 a.m. Then come to the Center to help with current activities.

Thursday, January 14: Today at 9:30, the first craft class for 1993 begins at the Center. Have heard that the folks who attended the fall class could hardly wait for each Thursday's activity. Come join these fun times. We've been eagerly awaiting Jan's call that Chinese is here again. This is a special that you shouldn't miss out on. People have been known to come home early from vacation just for this treat! And another treat is bingo which follows at the Center.

The January-February Trumpeter is ready and you may pick up your copy at senior meals or at the Center during those hours when it is open. Our Senior Center is a lovely place, have you seen it?

FUND RAISING

Manchester Sportsman Club
 8501 Grossman Road
Friday 6:45 p.m.

Manchester American Legion
 203 South Adrian Street
Saturday 7:00 p.m.

Girl Scout Troop 728 Donates Gifts



Junior Girl Scout Troop 728 helped out Manchester Family Services by purchasing a gift for each child on their list — 75 in all!! Troop 728 stood at Walco Foods collecting donations and giving away their handmade Christmas pins with each donation. Walco offered to let us stand inside of the store because the weather was bitterly cold and we appreciated their thoughtfulness. We appreciate the generous donations of the Manchester area residents who made it a wonderful Christmas for a lot of children.

Recreation Task Force

The Manchester Recreation Task Force will hold its monthly meeting January 13 at 7:30 p.m. at the Blacksmith Shop.

Let's start the New Year right by attending our meetings. (This includes me, also.)

Manchester Highseniors — we are still hoping you will come for an hour. We could help one another with Manchester recreation.

Volunteers to help with the programs are always welcome.

For information, contact the Community Resource Center at 428-7722.

— M. Gillow

The American Legion Auxiliary will meet Wednesday, January 13, 7:30 p.m. at the Legion Home

PARR'S AUTO BODY

BODY WORK - PAINTING -
 FREE ESTIMATES - INSURANCE WORK
 GLASS INSTALLATION

Corner of Grossman & Austin Roads
 8 - 5 Mon - Fri Sometimes on Sat.
 428 - 9538

WOMEN'S NIGHT OUT for the health of it

"Forgiveness: A Gift You Give Yourself"

Join us for this moving, simple and direct message on forgiving others and forgiving yourself.

by Maureen Burns
 Author and Motivator

Tuesday, January 19, 1993
 Holiday Inn West
 2900 Jackson Road, Ann Arbor

6:00 p.m. Networking, 6:30 p.m. Dinner

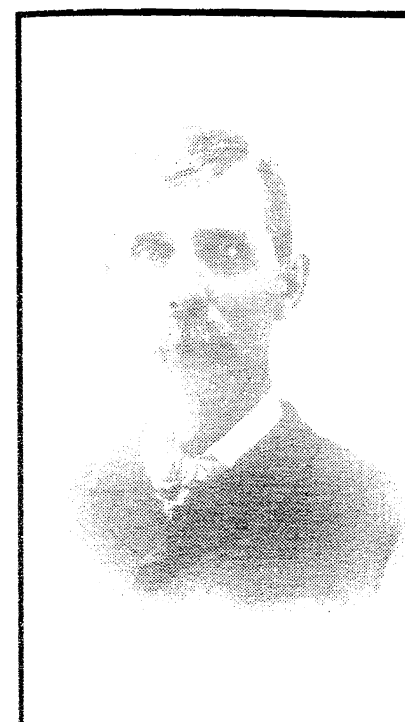
\$21.00 per person (VISA or MasterCard welcome)
 Reservations required by January 15, 1993
 To reserve a table of eight, include all names and full payment in one envelope

Please send checks payable to:
 Saline Community Hospital
 Women's Health Services
 400 W. Russell, Saline, MI 48176
 For more information, call 429-1555

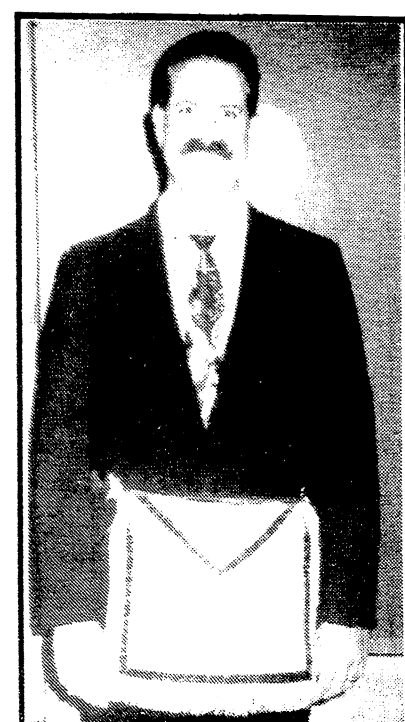


PEOPLE & OCCASIONS

Manchester Masonic News



November 1893, Jay D. Corry elected Junior Deacon.



November 1993, Martin Braun elected Junior Deacon.

In November 1893, Jay D. Corry was elected as the Manchester Masonic Lodge #148's Junior Deacon. Brother Corry became a Master Mason on January 5, 1874. He was engaged in farming.

The November 1993 election saw Martin Braun nominated and elected Junior Deacon. Brother Braun is the owner of the Jenter-Braun Funeral Home in Manchester. Completing his Master Degree July 13, 1992, he follows in the footsteps of his grandfather and father to become a third-generation member of the fraternity.

Desktop Publishing from WordPerfect is coming to Manchester

WordPerfect Corporation will be in town on Tuesday, January 12 to show their new product, Word Perfect Presentations. Kimberly Carlisle from WordPerfect will be at Woodbrook, 231 E. Main Street, from 1:00 to 3:00 to demonstrate Presentations. She will also be available to answer questions and demonstrate any other products offered by WordPerfect including the 5.2 release of the popular WordPerfect for Windows word processor and the new WordPerfect for DOS.

WordPerfect Presentations is a powerful, easy to use presentation graphics product. It is designed for those who want to put together powerful, persuasive, and elegant presentations with a minimum of fuss. Features include:

Master Gallery - a collection of slide templates using various colors and styles.

Outliner - see outline information only for a series of colorful presentation slides.

Speaker Notes and Handouts - pass out notes, complete with slide visuals.

Drawing, Editing, and Clip Art - Blend colors and objects. Use more than 1000 included clip art images, or modify to create your own.

Color - Create custom palettes of 256 colors from a universe of more than 16 million colors.

Slide Sorter - View slides and charts one at a time, or use the Slide Sorter to see all of them to add, delete, or arrange them.

Button Bar - Keep the most-used features close at hand with the Button Bar.

Charts - Emphasize data with any one of numerous chart styles, including 3-D bar, surface, pie, hi-lo, and organization charts.

Paint Tools and Bitmap Tracing - Create exciting color bitmap images, or edit scanned images.

Sound - Support for 20 popular sound cards allows you to add a captivating extra dimension to your presentation.

Multi-Platform License - License automatically good for DOS and Windows.

Did you know: Enterprise staff photos are available for purchase — \$1.50-\$3.00.

STEVE WALZ Construction
 Remodeling
 Room Additions
 Garages - Porches

CUSTOM BUILT CABINETS
 CUSTOM BUILT HOME ON
 YOUR IMPROVED LOT
 CAN SAVE YOU \$\$\$\$\$\$

Phone 428-9355

Saline Community Hospital Programs Offered

Learn Adult CPR

Adult CPR instruction will be offered from 5 to 9 p.m. Thursday, January 14, in Blue Rooms I and II and Saline Community Hospital, 400 W. Russell, Saline. Participants will receive American Red Cross CPR certification or recertification.

CPR, or Cardiopulmonary Resuscitation, is a technique to help a victim whose heart has stopped beating or who has stopped breathing. In the class, you'll learn how to restore breathing and maintain blood circulation in an emergency. You will practice how to save a life with this technique.

The fee is \$15.

Pre-registration is required. For more information, call 429-1636.

Women's Night Out Looks at Forgiveness

"Forgiveness: A Gift You Give Yourself" will be presented by Michigan Author Maureen Burns at a dinner-lecture program Tuesday, January 19, at Holiday Inn West, 2900 Jackson Road, Ann Arbor. Burns' message on forgiving others and yourself is simple, direct and moving. Her most recently published book deals with forgiveness.

This presentation is the second of three presentations this season of the Women's Night Out for the Health of It dinner-lecture series sponsored by Saline Community Hospital.

Registration and social will begin at 6 p.m. with dinner at 6:30 p.m. and the presentation at 7:30 p.m. The cost of \$21 per person includes dinner.

Say Good-bye to Smoking

Do your health a favor and sign up for the eight-session "Freedom from Smoking" clinic. Classes meet from 7 to 9 p.m. starting Wednesday, Jan. 20, at Saline Community Hospital, 400 W. Russell, Saline. "Freedom from Smoking" is a structured clinic offering a step-by-step approach to stop smoking. The program is co-sponsored by the American Lung Association of Michigan and Saline Community Hospital.

The \$60 fee includes materials. To register, call 429-1545.

Saline Community Hospital is a unit of Catherine McAuley Health System, a not-for-profit health care provider based in Ann Arbor.

Bonus on any CD

.25%

Even if you didn't get a bonus at work, you can get one at our bank. With our CD rate bonus, just open or renew a CD with \$5,000 or more in funds not currently on deposit at Great Lakes, and we'll add .25% interest to it. It's a great way to turn your deposits into even bigger returns. Ask about it at your nearest Great Lakes Bancorp location. Offer expires 1/31/93. Member FDIC.

Call 1-800-GLB-1890 or in Manchester, call: 428-8379
 Ann Arbor 769-8300



GREAT 8 TIRB CHEVY DEALER GE

A Good Selection of New and Used Cars On Our Lot

TIRB CHEVROLET & GEO

Phone 313-428-8212 or 313-428-8492
 131 ADRIAN STREET MANCHESTER, MICHIGAN

Women's Health Lecture Series presents...

"Build Your Own Road"

The lecture that explains how to get where you want to go, the way you want to get there!

- Identify self-directed leadership
- Address blame, shame and responsibility
- Learn the meaning of individual success
- Turn negatives into positives and maintain reality

Date: Tuesday, February 2, 6:30 p.m. dinner cash bar available
Location: Weber's Inn, Ann Arbor
Fee: \$20 person, pre-registration required
Speaker: Lois Wolfe-Morgan
Contact: (313) 475-3935

Lois Wolfe-Morgan
 Author and Director of Wolfe Associates, a management consulting firm specializing in personal and professional development.

Chelsea Community Hospital Women's Health Center

STEVE WALZ Construction
 Remodeling
 Room Additions
 Garages - Porches

CUSTOM BUILT CABINETS
 CUSTOM BUILT HOME ON
 YOUR IMPROVED LOT
 CAN SAVE YOU \$\$\$\$\$\$

Phone 428-9355

CHURCH NEWS

CHURCH DIRECTORY

EMANUEL UNITED CHURCH OF CHRIST—Rev. Paul Kuntzman, Senior Pastor, Rev. Nancy Doty, Associate Pastor; Telephone: 428-8359; Worship 10:30 a.m., 11:30 a.m. Coffee & Fellowship

MANCHESTER UNITED METHODIST CHURCH—Rev. Marsha Woolley, Pastor; 501 Ann Arbor St., Manchester, Telephone: 428-8013, Church 428-8495. Sunday School 9:00 a.m., Worship 10:30 a.m., Coffee & Fellowship 11:30 a.m. Church office hours—Tuesday, Wednesday and Thursday 8:00 a.m. until 11:00 a.m.

ST. MARY'S CATHOLIC CHURCH—Rev. Francis J. Murray, Pastor; Telephone 428-8811; Masses: Monday thru Wednesday, Friday 8:30 a.m., Thursday 7:00 p.m., Saturday 5:00 p.m., Sunday 8:30 a.m. and 10:30 a.m.

FAITH COMMUNITY CHURCH—Scott Engelman, Pastor, 8400 Sharon Hollow Rd. off W. Austin; Telephone 428-8709; Worship Service 10:00 a.m.; Sunday School 11:30 a.m.; Sunday Evening Service 6:00 p.m.; LIFELINE 7:30 p.m.

VICTORY BAPTIST CHURCH—Rev. R. Dean Cooper, Pastor; 423 South Macomb, 428-7506, Sunday School 10:00 a.m.; Morning Worship 11:00 a.m.; Evening Public Bible Class 6:00 p.m.; Wednesday Praise and Prayer 7:00 p.m.

BETHEL UNITED CHURCH OF CHRIST—Rev. Roman A. Reineck, Pastor, 10425 Bethel Church Road at Schneider Rd.; Phones: Parsonage & Church 428-8000/429-7175; Church Service 9:30 a.m.; Sunday School 10:45 a.m.

SHARON UNITED METHODIST CHURCH—Rev. Peggy Paige, Pastor, Corner of M-52 and Pleasant Lake Roads; Telephone 428-7714; Church School 10:00 a.m.; Worship 11:00 a.m. Phone 428-8490

ST. JOHN'S LUTHERAN CHURCH—Rev. Dennis A. Falk, Pastor, Austin Road, Bridgewater; Telephone 428-7434; Sunday School 9:15 a.m.; Worship 10:30

NORTH SHARON BAPTIST CHURCH—Bill Winger, Pastor; Clifford W. J. Whitenburg, Assistant Pastor; Sylvan and Washburn Roads; Telephone 428-7222; Sunday School 10:00 a.m.; Morning Church 11:00 a.m.; Evening Church 7:00 p.m.; Wednesday Bible Study 7:00 p.m.; Youth Meetings 7:00 p.m.

IRON CREEK COMMUNITY CHURCH—Tom Butterfield, Pastor; English and Sharon Hollow Roads; Sunday School 10:00 a.m.; Morning Church 11:00 a.m.; Sunday Evening 7:00 p.m.

ZION LUTHERAN CHURCH—Rev. Mark A. Weirauch; 3050 S Fletcher Road; Telephones: Pastor 475-3481, Church Office 475-8064, Susan Wiley, Secretary 428-7268. Sunday School 9:00 a.m.; Worship Service with Holy Communion 10:15 a.m.

ST. THOMAS LUTHERAN CHURCH—Rev. John Riske, Pastor; 10001 W. Ellsworth Rd., (5 miles North and 6 1/2 East of Manchester); Telephone 663-7511; Schedule: Church Service 10:45 Sunday. Bible Class and Sunday School 9:30 a.m.

ST. JOHN'S UNITED CHURCH OF CHRIST—Rev. Nancy Doty, Pastor, 12376 Waters Road, Waters and Fletcher Roads, Rogers Corners, Worship and Sunday School 9:00 a.m.

CLINTON ASSEMBLY OF GOD—Rev. Richard Coury, Pastor; 13300 Clinton-Manchester Road, Clinton; Phone 517-456-7510; Sunday School 9:30 a.m.; Worship 10:45 a.m.; Sunday Evening 6:30 p.m.; Wednesday Prayer, Bible Study, Youth 7:00 p.m.

CHURCH OF JESUS CHRIST OF LATTER DAY SAINTS (MORMONS)—Samuel M. Skidmore, Branch President, 1390 Freer Road, Chelsea; Sacramento 9:30 a.m.; Sunday School, Primary 10:40 a.m.; Priesthood Relief Society, Aaronic Priesthood, Youth 11:40 a.m. For more information call 517-456-7876/313-475-1778

CHELSEA FULL GOSPEL CHURCH—John and Sarah Groesser, Pastors; 11452 Jackson Road (Lima Town Hall) 313-475-7379; Sunday 10:15 a.m. Prayer, 11:00 Morning Worship Service, 6:00 Evening Worship Service; Wednesday 7:00 p.m. Church School, all ages (call for location)

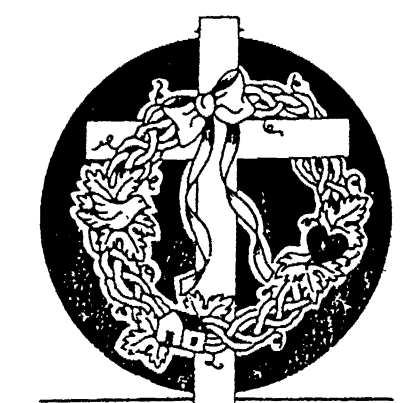
UNITY CHURCH OF JACKSON—3385 Miles Road, Ackerson Lake, Jackson, MI, 517-764-6900; 11:00 a.m. Sunday Services and Sunday School.

COMMUNITY BIBLE CHURCH—Pastor Jody Riethmiller, meets at the Manchester Middle School in Manchester; Worship 10:00 a.m., Sunday School following, Evening Service 6:00 p.m.

NEW LIFE CHRISTIAN CENTER—50 Freer Rd. (Covenant Church); Pastors Erik & Mary Nansen; Sunday 12:30 p.m. Praise, worship, Children's Church, 6 p.m. In-home meetings; 1st Monday of the month 7 p.m. Women of Faith meet in homes, every Thursday 7 p.m. Praise and prayer.

EMANUEL UNITED CHURCH OF CHRIST—Worship, January 6: 6pm Bell Choir, 7:30 pm Adult Choir
Thursday, January 7: 12 Noon Senior Meal, 3:20 Cherub Choir, 3:40 Children's Choir, 6:30 Basket Making, 7pm Cub Scouts
Sunday, January 10: 9am Sunday School, 10:30 Worship, 11:30 Fellowship Time, 6 & 7pm Confirmation Classes, 7:30pm Church Council

ZION LUTHERAN CHURCH—Wednesday, January 6: WOZ 1:30pm Lydia Circle, 7:45pm Martha Circle
Sunday, January 10: 9am Coffee Hour, Sunday School, 10:15 Worship, Junior Choir. Deadline for Annual meeting reports
Monday, January 11: 7:30pm Finance Comm., Christian Education Committee



Begin the year with God

Epiphany is a season of light

Epiphany is a season of worship because it deals with the Glory of God manifested in Jesus.

The season begins with the Wise Men coming to worship the newborn King. The season ends with the worship experience on the mount of Transfiguration.

When people see Jesus as God's Son, they instinctively fall down to worship him as Lord. The name "Epiphany" means "Manifestation." The light manifests itself in the darkness, God reveals himself in Jesus, and the glory of God is seen in Jesus.

The Epiphany season extends from six to nine Sundays. The number of weeks observed depends upon the date of Easter and the beginning date of Lent.

Epiphany is a season of light, the light that shines and reveals. The symbol is the Epiphany Star. The light burns so that all may see truth and the way to God.

Epiphany is the time for emphasis upon evangelism, the telling of the Good News, the spreading of the light of Christ in a dark world. Christ is the light and Christians need to reflect that light in the world. We are light-bearers.

—Dorothy Weigert

(Bethel United Church of Christ newsletter for January)

Tuesday, January 12: 7:15pm Senior Choir, 7:30pm Shuffleboard

Wednesday, January 13: 7:30pm Business Management, 8pm Church Council

MANCHESTER UNITED METHODIST CHURCH—Wednesday, January 6: 3:15pm Girl Scouts, 7:30pm Bible Study
Saturday, January 9: 8am UMM

Sunday, January 10: 9am Sunday School, 10:30 Worship
Monday, January 11: 3:15 Girl Scouts

Wednesday, January 13: 3:15 Girl Scouts 7:30 Care & Share

OBITUARY

Gerald Meyer Saline Township

Age 52, passed away Monday 4, 1993 at St. Joseph Mercy Hospital in Ann Arbor, MI. Mr. Meyer was born December 24, 1940, in Manchester, MI, the son of Marvin and Helen (Benedict) Meyer. He was a Saline area resident for the past 31 years moving here from Manchester. He married Joanne Hieber on February 24, 1962 in Manchester. He was a graduate of the Detroit Engineering Institute and a member of St. Paul United Church of Christ of Saline. He enjoyed outdoor activities which included fishing, woodworking and sports. He was employed by the Ford Motor Co. as an engineer for over 25 years.

Survivors besides his wife include three daughters: Sarah Meyer of Ypsilanti, MaryKay Meyer of Charleston, SC, and Betsy Meyer of Kalamazoo; one son Jeff Meyer at home; his mother Helen Meyer of Manchester; one sister Carol Knorpp and husband David of Brooklyn, MI; one brother Ray Meyer of Manchester; several nieces and nephews. He was preceded in death by his father.

Funeral services will be held at St. Paul United Church of Christ in Saline on Thursday, January 7 at 11:00 a.m. with the Rev. Ronald Boldman officiating, burial to follow in Benton Cemetery, Saline Township. Visitation will be Wednesday, January 6 from 2:00 to 4:00 and 7:00 to 9:00 at the Robison-Bahnmler Funeral Home in Saline. At the request of the family no flowers to be given. Memorial contributions may be made to St. Paul United Church of Christ or Michigan Heart Vascular Institute.

Volleyball

The Manchester High School volleyball team played in the Bedford tournament on Saturday. We tied for second place in our pool. However, we didn't make it to quarter finals because we were beat on total points scored by Plymouth-Salem, a Class A school, who was also in a 5-3 tie. The highlight of the tournament was when we beat Bedford, another Class A school, 15-13.

We need to work on defense and being consistent. Top players for the day were Adrienne Wallace with 26 kills and 82% setting proficiency.

Sarah Riske had 18 kills and led us in serving with seven aces and 88% proficiency.

Tracy LaRue also had a good setting day with 92% accuracy.

Kathleen Baran led the way in passing with a 76% accuracy mark.

Our next game will be Monday, January 11 at home vs Milan. Please come and show your support.

DUTCH WRESTLING

As the season started we really didn't know what we were capable of as a team, but that was quickly changed as we traveled to Concord for our first tournament. We pulled in on Saturday with a partial team of 11 wrestlers, many of them with little experience. But we wrestled very well, placing 10 of our kids. In the championship finals we had 5 wrestlers but could only manage one champ that being Brent Woods at 130.

Our second place finishers were Jay Eiss at 103, Jim Suggs at 112, Lucas Millheim at 119, and Chris Carson at 125, and at 189 Steven duvall also took second In the consolation finals we had Mike Bunn take 3rd at 135, Bryan Duvall take 4th at 140. Adam Erskine place 4th and Mike Croghan took 3rd at 152. Overall the team took home the runner-up trophy which made me very proud of our young squad.

Thursday the 17th saw Onsted come into town and escape with a narrow victory over the Dutch. Even though we had won more matches our forfeits killed our momentum, losing by the score of 36-33.

After the great start we've had, I'm really looking forward to the remainder of the season and continuing our success.

Hope to see you soon watching our team go for more hardware as we work toward our goals for District champs both individual and team.

— Coach Vlcek

Flags make Great Holiday Gifts



SALE 30% off holiday flags

617 S. Ashley • Ann Arbor • (313) 665-9126

South Central Sanitation

- Emergency Service
Septic Tank Cleaning
Tank & Drainfield Installation

Available 7 Days a Week

PHONE: 517-536-4591



Dan Moore Owner

Sula Darlene Jeffers

ATTORNEY AT LAW
146 E. MAIN STREET
P.O. BOX 625
MANCHESTER, MICHIGAN 48158

(313) 428-8190

Thinking of a new addition or improving and existing room - We'll give you a bid & do a GREAT job on your electrical needs.

CALL US!!

428-8243
428-8331



MANCHESTER ELECTRIC

200 Riverside Drive, Manchester, MI.



Ever Get Somebody Totally Wasted?

TAKE THE KEYS. CALL A CAB. TAKE A STAND.



FRIENDS DON'T LET FRIENDS DRIVE DRUNK

*New gas tanks installed \$130 & Up

- We Turn Rotors & Drums
Brakes
Exhaust
Shocks & Struts
Tune ups
Front End Alignments
Radiators
Tires
Tie Rod Ends
CV Shafts
Batteries
Transmissions

Mon. - Fri. 7 a.m. - 7 p.m. Sat. 8 a.m. - 5 p.m.
Closed Sundays

Advertisement for BENEDICT'S SERVICE 24 Hour Wrecker Service, featuring logos for AAA and Sunoco, and contact information: 327 W. Main St. Manchester, Mi. 428-8576

THE CHURCH PAGE IS BROUGHT TO YOU THROUGH THE FOLLOWING SPONSORS

Table listing various sponsors including George & Mable Macomber, Dan's Westside Automotive, Manchester Men's Club, Wacker's General Store, Keith's Barber Shop, Pilot Metal Products, Janice & Dave Little, Evelyn Eccles, Manchester Car Wash, Manchester Automotive, Drs. Charles Lyon & Michael Brooks, D.O.s, Albers Orchards, You Owe It To Yourself..., Hendley & Datsko, P.C., Manchester Tool & Die, Manchester Plastics, Norm & Olga Walz, Brooklyn Living Center, S-K Sales, Inc., Manchester Chiropractic Clinic, Kleinschmidt True Value Hardware, Reno & Nancy Feldkamp, Haarer's Meeting Place, The Manchester Enterprise, Manchester Manor, Gene & Gertrude Smith Pinnacle Engineering, and Manchester Stamping.

CLASSIFIEDS

SERVICES

Michigan Peat Sales: Black dirt for sale \$12 a yard delivered. Fast delivery. 428-9664 tfn

Lost or Found a Pet? Call the Huron Valley Humane Society, 662-5585. tfn

Fielder Painting: Interior and exterior. Free estimates. Senior citizen discount. Phone 428-8506 tfn

Available for Wedding receptions, parties, meetings. Hall rental \$175, \$40 cleaning. Catering available. For further information, call 428-8393 or 428-7637. tfn

Black Dirt For Sale: By the pickup load or delivered. Dozer and backhoe work also available. 428-9265. tfn

Village Hair Forum in the Mill. Full service salon with tanning beds. 428-7684. tfn

Excavating: Sand, gravel, backhoe and bulldozing. Reasonable rates. 428-9265 tfn

Benedict Painting: Call Chuck for free estimates. 15 years experience — interior & exterior painting. 517-536-4812. tfn

Margie's Upholstery: Still serving Manchester. 517-536-4230 tfn

Piano Tuning and Repair: Qualified technician with 15 years experience. Ronald Harris. 475-7134 tfn

Little Wack Excavating: Basements. Drainfields. Bulldozing. Black Dirt. Topsoil. Sand. Gravel. Ponds. Snow Removal. Saling. Paul W. Wackenhut 313-475-8526. 93/p

Wallpaper hanging/stripping: Trim painting and "lite" carpentry. Decorating consultations. Many styles of wallpaper to choose from. Coordinating fabrics. In-home shopping. Call "My Sister's House" for free measuring and consulting. Juli Trolz 428-7117 tfn

Attention Homeowners & Renters Age 55 & Over: 30% Discount on Homeowners & Renters Insurance. Sutton Agency, Inc. 428-9737. tfn

MISC. FOR SALE

McCullough Chain Saws, service and parts. Bars, chains and some parts for other brands. Earl R. Alber, 639 W. Main, 313-428-8707. tfn

Chest-type Freezer: Days 428-8173, evenings 428-9649 leave message.

ANTIQUES

Manchester Antique Mall: 35 Dealers. Open 7 days 10-5. 116 E. Main. 428-9357 tfn

FOR RENT

Two Bedrom Apartment in Village: \$375/month. You pay utilities. 313-428-9150, leave message. tfn

Three Bedroom Executive Ranch for rent. 313-428-9150. Leave message. tfn

Available Immediately: On Pleasant Lake. One 1-bedroom \$380/month. One 2-bedroom \$425/month. No pets. Aura Inn 428-7993.

Country Setting in the Village: X-tra large two-bedroom, \$570, with new carpeting and verticals, washer/dryer. No pets. Hibbard Street. 428-9570. tfn

HELP WANTED

Mature Female for part time secretarial in home office. Typing, filing, process mail. Flexible hours. 428-0020. 1/14

CHILD CARE

New Lower Rates Enrollments being accepted in Toddler, Preschool and Child Care programs for children 1-8 years. Choice of morning, afternoon or full-day programs. Contact Little Dutch Child Care Center at 428-8988. tfn

FARM EQUIPMENT

Oliver 70 Tractor: Snow blade, plow, disc, redone sickle bar. Moving must sell. 428-9790. p

Steel Buildings, Factory Specials: 1992 inventory blow out! Fast delivery! Limited sizes and quantities! First come, first serve! Call Dave at 313-741-1773. 1/14

ANNOUNCEMENTS

Bridgewater Bank Tavern Ladies Night Out January 12 7:00 p.m. Horizon Travel will talk about get-away weekends and answer any questions. Dinner special starts at 5:00 p.m.

Buying All Types of Horses and Ponies: References available. 313-437-2857. 2/4/p

The Manchester Enterprise

has an opening for an ad person. Knowledge of Macintosh necessary. Apply in person at 109 E. Main St., Manchester, or Phone 428-8173

BEFORE WEDDING BELLS RING...



See us for QUALITY INVITATIONS RECEPTION ITEMS ATTENDANTS GIFTS by Carlson Craft

The Manchester Enterprise 109 East Main Street Manchester, MI Phone: 428-8173

CARDS OF THANKS

Junior Girl Scout Troop 728 would like to thank their sponsors:

Woodbrook Computer Sales and Keith's Barber Shop for all they have done for us this year.

Thank you for all the copies, the window space, for the help with our recent Christmas project for Manchester Family Services, your patience with us and so much more. We appreciate you very, very much!!!

Give a gift subscription to The Enterprise just like a letter from home!

Marty's Plumbing, Heating, & Air Conditioning 517-592-8144 Brooklyn 35 years experience

REAP THE SAVINGS!!

GM AUCTION CARS

Table listing GM auction cars with models, years, and prices. Includes 1992 Chev Lumina, 1992 Buick Skylark, 1992 Olds Toronado, 1992 Geo Storm Hatchback, 1992 Buick LaSabre, 1992 Olds Delta Royal, 1992 Olds Delta 88 LS, 1992 Chev. Beretta GT, 1992 Olds Cutlass Ciera, 1992 Chev Caprice.

QUALITY USED CARS & TRUCKS

Table listing quality used cars and trucks with models, years, and prices. Includes 1993 Chev S-10 Pick-up, 1992 Buick LaSabre, 1992 Olds 98, 1991 Chev Cavalier, 1991 Plymouth Voyager, 1990 Chev 3/4 ton, 1990 Chev 3/4 ton, 1990 Olds Calias, 1990 Olds Cutlass Supreme, 1989 Buick Limited, 1989 Dodge Daytona, 1988 Buick LaSabre, 1988 Chevrolet Caprice, 1988 Chev. Celebrity, 1988 Chev Cavalier, 1988 GMC Safari, 1988 Ford 1/2 Ton, 1988 Chev Suburban, 1987 Chev Cavalier R.S., 1986 Olds Cutlass Calais, 1986 Buick Somerset, 1986 Chev Nova, 1986 Pontiac 6000 STE, 1986 Olds Toronado.

CALL Dave, John, or Fred FAIST - MORROW "Where the QUALITY Used Cars Are." 1500 S. Main St. Chelsea OPEN TILL 8:00pm MON & THURS OPEN SAT 9-3 475-8663

VILLAGE OF MANCHESTER FILING OF NOMINATING PETITIONS TO THE QUALIFIED ELECTORS OF THE VILLAGE OF MANCHESTER, COUNTY OF WASHTENAW, STATE OF MICHIGAN:

NOTICE IS HEREBY GIVEN, that persons desiring to qualify for any elective office shall file a petition therefore with the Village Clerk signed by not less than twelve (12) registered voters of the Village not later than 4:00 p.m. on January 18, 1993 which is the seventh (7) Monday prior to the March 8, 1993 non-partisan Regular General Village Election.

THE VILLAGE CLERK SHALL ACCEPT PETITIONS, THEREBY NOMINATING CANDIDATES FOR THE FOLLOWING OFFICES, VIZ: Three (3) Village Trustees..... Two (2) Year Term Official Blank Petitions May Be Obtained At The Village Offices, 120 S. Clinton St. VILLAGE OF MANCHESTER KAREN TUCKER, CLERK

Bridgewater Township Planning Commission Proposed Summary of Minutes December 14, 1992

Chairman Fish called the meeting to order at 7:30 p.m. Present: Iwanicki, Cobb, Wahl, Fish, Dull, Peacock

The proposed agenda for the meeting was reviewed.

Minutes from the meeting of November 9 were approved as distributed.

A proposed final list of recipients for the Ameritech screening payments was presented. Some revisions regarding specific properties were discussed. Motion by Dull, support by Cobb, to approve this list, including revisions as proposed, and present same to the Township Board and to Ameritech for further necessary action. Passed without objection.

Chairman Fish extended appreciation to Gabe Dull on behalf of Planning Commission for his efforts on establishing this list.

Chairman Fish updated Planning Commission on his actions to date regarding a request from property owners near the Ameritech tower that additional shielding be considered for the daytime strobe light on the tower. At present a report from Ameritech supplying further information is anticipated.

Chairman Fish reported no response received from Genpack regarding a request from Planning Commission for an updated site plan. Further contact will be made.

The Zoning Administrator raised the issue of informing township residents of the requirements concerning zoning and building permits for all structures within the township. In addition possible penalties for residents who fail to obtain proper permits prior to construction were discussed.

Motion by Dull, support by Peacock, that Planning Commission strongly recommends that the Township Board consider that the township fee

Approved Proceedings Manchester Village Council December 21, 1992

The regular meeting of the Manchester Village Council as called to order by President Becktel. Council members present: Becktel, Brooks, Cooper, Gordon, Marshall, Reinhart, Taepke, Manager Wallace and Clerk Tucker. Also present: Sgt. Werner, Atty Lucas.

The minutes of the December 7, 1992 meeting were approved as amended on a motion by Marshall, support by Cooper. Vote: Ayes-all.

The proceedings of the December 7, 1992 meeting were approved on a motion by Gordon, support by Reinhart. Vote: Ayes-all.

Motion by Marshall, support by Brooks, to accept the Sheriff Report as submitted. Vote: Ayes-all.

Bridgewater, Manchester Township and the Village would like the paper bin at Walco removed by the end of January, providing the additional curbside collection is in place in the Village.

Wallace reported that the hole at the DPW yard had been filled in.

BLACK SHEEP UPDATE - Council asked that another certified letter be sent to Chris Hoover asking that he attend the January 4th meeting to address Council's concerns and discuss condemnation proceedings on the building.

DAY HOUSE UPDATE - Council will have to set up a public hearing before the house can be boarded up.

Marshall asked what was being done about the skating rink in Wurster Park. Wallace informed Council that the Parks Commission and Wallace will handle it this year.

TRANSFER SITE - Council discussed the possibility of closing the Transfer Site by March 1st.

Motion by Marshall, support by Taepke, to go into closed session with Attorney Lucas at 8:20 p.m. Vote: Ayes-all.

Motion by Gordon, support by Reinhart to adjourn the council meeting at 9:07 p.m. Vote: Ayes-all.

Karen Tucker Village Clerk

NOTICE

Due to scheduling conflicts, the Regular meeting of the Manchester Township Board for the month of January will be held on Tuesday, January 12, 1993, at 8:00 p.m. at the Manchester Township Hall, 275 S. Macomb St.

Kathleen M. Hakes Manchester Township Clerk

Manchester Village Planning Commission Regular Session Tuesday, January 12, 1993 7:30 p.m. Council Room Village Hall Agenda

- 1. Roll Call
2. Approval of Agenda
3. Minutes of Previous Meeting
4. Reports from Administration Commissioners and Public
5. New Business
5.1 General Development Plan Revisions Adoption Proceedings
5.2 Review of Ordinance No. 206; Amendment to the Site Plan Review process to permit consultation of a professional planner on major developments that would have a significant impact on the Village. Fees of the professional planner would be paid by the applicant of the Site Plan Review
6. Outstanding Business
6.1
6.2
7. Adjournment

GUN SHOW Farm Council Grounds 5055 Saline-Ann Arbor Road January 16 - 9-5 January 17 - 9-4 For information, call 313-944-0249

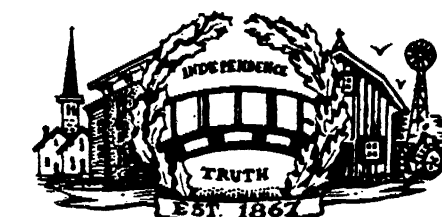
STEIN ELECTRIC COMPANY, INC. Licensed & Insured Contractor 24 Hour Emergency Service Ag. Commercial Industrial Institutional Residential Motor Controls & Lighting (313) 428-9050 Rick Graustein

LOW PRICES, HIGH STANDARDS. EXPRESS LUBE OIL & FILTER \$18.95* most light trucks & cars w/ coupon expires 1/29/93 FRONT END ALIGNMENT \$32.95* Add'l parts & labor extra w/ coupon expires 1/29/93 ELECTRONIC ENG. ANALYSIS \$39.95* Check elec. engine control systems for fault codes, inspect ignition & fuel-injection system w/ coupon expires 1/29/93 All Prices include our commitment to QUALITY CARE *Genuine Ford Parts *Computerized Diagnostics *Factory Trained Mechanics *12 mos/12,000 mile Parts Warranty *Follow-up Calls *Service Loaner/Rentals *plus taxes & environmental fees MIDWEST FORD 510 W. MAIN MANCHESTER M-F 7:30-5:30 QUALITY CARE It may be your car, but it's still our baby. 428-8343

The Manchester Enterprise 109 East Main Street Manchester, Michigan 48158 SUBSCRIPTION Washtenaw County \$15/year Other \$18/year Name Address City Zip

THE MANCHESTER ENTERPRISE

The Center of the Universe



125th Year — No 12

Manchester, Michigan

35c per copy

continued from page 5

Like many rural crossings, the one they were approaching had no gates or lights; only a black-lettered "Railroad Crossing" sign warned motorists of potential danger.

At 8 p.m., Frank Hoffman, who lives near the crossing, heard a train whistle pierce the night in long, urgent blasts. Glancing out his window, he saw the Datsun approach the tuffoff, slightly ahead of the three-quarter-mile-long train. Then the car turned right and headed straight for the crossing without stopping. A split second later he heard an ear-splitting boom. Brakes squealing, the 3000-horsepower locomotive crushed the Datsun like a tin can and pushed it over a thousand feet along the tracks before dropping it into a ditch. The three girls died instantly. Devastated family members, friends and officials tried to piece together what had happened. The Datsun had no mechanical problems. The train's light and horn worked properly.

Perhaps the car radio blocked out the sound of the train's whistle. Possibly, when the girls turned toward the tracks, the locomotive was already so close they could no longer see its headlight towering two stories above them. Or maybe they simply weren't paying attention. One thing is certain: they had violated the first commandment of crossing railway tracks: stop, look and listen.

"Until you have been asked to identify your own child's body," Stephanie's mother would later explain, "you do not know the meaning of heart-break." Marlee's room—a friendly clutter of musical scores and family photographs has been left untouched since her death.

Lisa's parents worry about the effect of the tragedy on their youngest child, four-year-old Becky, who idolized her big sister. For a while the little girl was haunted by nightmares of a train with a big mouth that chased her. She has since gained a haunting insight into her own mortality. "How old," she asks, "will I be on my last birthday?"

Kim Lester, 15, greeted her boyfriend Chad Sullivan, 17, at the door. "Happy Valentine's Day," she said, handing him a balloon emblazoned with the words "I love you."

Kim hugged her mother goodbye, and the two teen-agers drove to Chad's house, where he presented Kim with a dozen red roses. "We're going to the movies," they told Chad's father, Gary. "We'll be back around midnight."

Chad and Kim made a striking couple. A high-school senior in Edgewood, Md., Chad was five-foot-eleven, with blond hair and blue eyes. Kim, a trim five-foot-six sophomore, had dark eyes and ebony hair and a sprinkling of freckles across her nose.

Chad put in long hours at the supermarket his uncle managed, and with his earnings had bought his father's 1985 Plymouth Laser. He wouldn't let anyone smoke or drink in it, and he insisted everyone wear seat

belts. If Chad had a weakness, it was speed. Sometimes he liked to show off, squealing the wheels when he left a parking lot.

Kim, like Chad, was an honor student. She often had to study late at night because she was on both the soccer and cheerleading teams.

After seeing *The Hand That Rocks the Cradle* that Valentine's night, Chad took a new route back home. Unfamiliar with the two-lane country road, which was wet from a recent rain, he approached a curve too fast. Police estimate he was traveling 60 in a 40-m.p.h. zone. Skid marks indicate he jammed the brakes instead of pumping them. The car slid across the road, climbed an embankment and slammed into a utility pole.

Despite Chad's rule, Kim was not wearing her seat belt; police speculate that perhaps she was snuggling up to him. She catapulted through the windshield and hit the ground. The pole caved in the left side of the car and smashed into Chad's skull, chest and abdomen. Kim was killed instantly by the impact. Chad was rushed to the hospital. He died the next morning.

In the weeks following the accident, scores of grieving students visited the site. They erected a cross and brought flowers. "She was such a good kid," sobbed Kim's mother, Shirley. "And she was just going to the movies." "You'll never know what it's like," says Gary Sullivan, who sometimes finds himself crying while at the controls of the diesel locomotive he runs. "Parents aren't supposed to bury their children."

Greg, Renee, George, Stephanie, Marlee, Lisa, Chad, Kim — eight bright, promising youngsters, all needlessly gone. There are so many ifs. If they'd paid attention; if they'd slowed down; if they'd used their seat belts; if they'd looked more carefully perhaps they'd still be alive today.

If you know a teen-ager who drives, give him or her this article. It may save a life.

Reader's Digest, January 1993

WE DON'T GO HOME AT FIVE

Americans can enjoy a peaceful evening at home because our armed forces guarantee that peace. All around the globe, at sea and ashore, men and women of the U.S. Navy are working hard to safeguard your tomorrow. They're protecting you, representing you and making you proud of your country.

IT'S YOUR NAVY.

January/February Programs Offered at Chelsea Hospital

CHELSEA COMMUNITY HOSPITAL is presenting a **Stress Management Class** on Wednesdays, January 6, 13, 20, 27 and February 3, 1993 from 6:00-8:00 pm in the Hospital's Volunteer Room. Join this class and learn how to reduce the stress in your life. Care Choices Health Plan participants are reimbursed 50% of fee after meeting all class requirements. For more information and to register call the Education Department (313) 475-3935.

CHELSEA COMMUNITY HOSPITAL Fitness Center Classes begin a new session January 4-February 13. The Fitness Center offers a wide variety of fun and effective classes which include SPRI bands,

dynamabands, and steps. Satellite classes meet in Grass Lake, Manchester, Stockbridge and Chelsea Dance Arts Academy. Visa and Mastercard accepted. For more information and to register call the hospital's Education Department (313) 475-3935.

CHELSEA COMMUNITY HOSPITAL is offering CPR for Infant/Child Victims Tuesdays, January 19 and 26 from 7:00-10:00 pm in the hospital's Woodland Room B. Students are taught artificial respiration, one rescuer CPR and first aid for obstructed airway (choking) for infant/child victim. Participants successfully completing the class will receive certification by American Heart Association. For more information and to register call the hospital's Education Department, (313) 475-3935.

Planning Commission From Page 1

At the Regular Session of the Manchester Planning Commission, December 15, 1992, concerned citizens voiced their opinions of the proposed General Development Plan.

Planning Commission Members, after listening to the concerns of residents, considered three options as presented by Robert Daverman, Chairperson.

1. Keep the plan as it currently is, General commercial west of 52, O/S transition east of 52.

2. Establish the west side of 52 as O/S transition & east side remain medium density residential.

3. Keep it as it currently exists.

The second option seems to be favored and may be acted upon.

Where to Recycle

Manchester — Recycling bins at Walco Foods:

- clear, green and brown glass (clean, lids removed)
- tin cans, bottle caps, steel jar lids, aluminum cans and trays (clean, crushed labels removed)
- newsprint
- milk jugs (clean, crushed, no caps)

Dan's Westside Automotive:

- used car batteries
- used motor oil (a 90¢ charge per gal. - what Westside is charged to have motor oil picked up)
- used anti-freeze (same as above-90¢/gal.)

Pyramid Office Supply:

- polystyrene packing peanuts

household batteries
Dyer's Auto Parts: (The junk yard two miles west of town on Austin Road, 8am-5pm Mon-Fri, 8am-1pm Sat.)

- any scrap metal, including used appliances (refrigerator doors must be removed)

used car batteries (they pay \$1 each for them)

Recycle Ann Arbor Drop-Off Station, 2050 S. Industrial, Ho 12 noon til 7:00 p.m.

- milk jugs (clean, crushed, caps removed)

used motor oil

- office paper
- corrugated cardboard (flattened)

brown paper bags

- scrap metal
- scrap aluminum
- car batteries
- newsprint
- glass
- tin cans
- aluminum
- household batteries

#2 laundry detergent type bottles (caps removed)

Recycling & Resource Recovery, 2314 Treat Hwy., Adrian (near Meijers), Mon-Fri 9am-5:30pm, Sat. 9am-1pm — all plastics with the recycling logo (numbers 1-6). They do not take #7 (other), #2 HDPE should be sorted into three categories, translucent, colors and oil containers. They also accept polystyrene packing blocks (no packing peanuts)

- paperboard (cereal boxes, etc.) flattened
- everything else Recycle Ann Arbor takes except car batteries and oil.

313-429-4885 COUPON 517-423-2148

Saline in the Saline Shopping Center

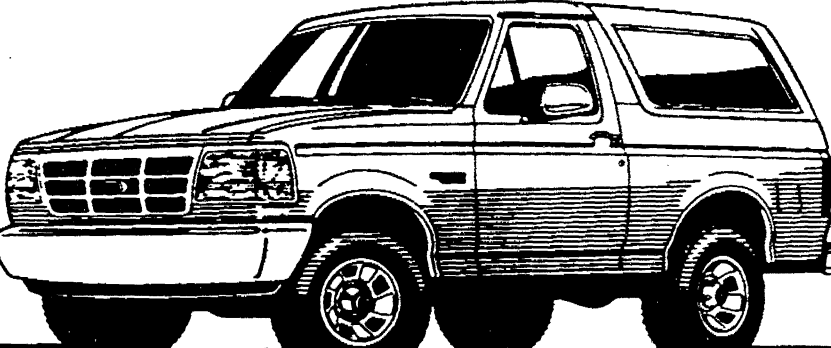
1ST OPTOMETRY eye care centers

Dr. Thomas Cunningham

DOES NOT APPLY TO OTHER DISCOUNT OFFERS OR PRIOR ORDERS

Saline \$99 Daily Wear Soft Contact Lenses

Tecumseh 128 W. Chicago Blvd. \$10 (with coupon) Prescription Eyeglasses



1993 FORD BRONCO XLT 4x4

\$ 22,400 * MIDWEST FORD PRICE

When you buy Preferred Equipment Package 684A.

- | | |
|--|--|
| Standard Equipment: | Package 684A Equipment: |
| • 5.0L EFI V-8 Engine | • Air Conditioning |
| • 5-Speed Manual Overdrive Transmission | • Electronic AM/FM Stereo Radio w/Cassette/Clock |
| • Power Steering | • Rear Window Defroster |
| • Anti-Lock Brakes | • Privacy Glass™ |
| • Cloth Captain's Chairs with Power Lumbar | • Light /Convenience Group |
| • Tachometer | • Power Locks/Windows/Mirrors |
| • Interval Wipers | • Chrome Styled Steel Wheels |
| • Vent Windows | • Swing-Away Spare Tire Carrier |
| • Rear Cargo Light | • Automatic • Elec Shift |
| • And More | • Trailer Tow |
| | • Two Tone Paint |

Manufacturer's Suggested Retail Price	\$26,985*
Option Package Discount	\$ 1,400**
Dealer Discount	\$ 3,185
Total Savings	\$ 4,585

Stk # 5528 Midwest Ford Price \$22,400

MIDWEST FORD
510 W. Main St., Manchester
428 - 8343

*Title and taxes extra. **Savings based on manufacturer's suggested retail price of option package vs. M.S.R.P. of options purchased separately.



Patricia Keezer, New 1st of America Branch Manager

Patricia Keezer was introduced at First of America Bank's Manchester Branch open house, Friday, January 8, 1993. Patty as she prefers to be called is a Manchester High School Graduate and Clinton resident. Patty and husband Dennis have four daughters; Stephanie, an EMU sophomore, Angie, Carrie and Sherry who attend Clinton Schools. When asked how she manages a full time job, family and the various education courses she takes to keep abreast of banking; "You just have to do a good job at balancing". That certainly sounds like the eminent qualifications needed to be a banker and branch manager.



Bob Wahr, new Branch Manager of Comerica

Robert "Bob" Wahr, has assumed the position of Branch Manager of Comerica's Manchester Branch. Bob's Great grandfather John Wahr, was a Sharon Township resident.

Bob was the Branch Manager of the Irish Hills office and has been in the banking business for 11 years. He and wife Debbie, daughter Stephanie and son Eric reside in the Irish Hills area.

A Michigan State Graduate who attended Columbia Central High School was born and raised in the Brooklyn Area.

BRANCH BANKS LOCAL INTERSECTION CLAIMS MORE MOTOR CITY METAL



Photo W. E. Y.

The car on the right is the Sharon Hollow south bound vehicle that failed to stop at Austin Rd., driven by Rosemary Dejonghe of Manitou Beach, the car in the background driven by Tracy Tuhill of Jackson, the Station Wagon below was driven by Helen Strahle also of Jackson. Dejonghe was transported by Helicopter, Woods, Tuhill and one other by ambulance.



Photo W. E. Y.

Conflicting reports of the accident have surfaced. Apparently Dejonghe ran the stop sign on Sharon Hollow and was struck by Strahle's east bound vehicle. Dejonghe's vehicle spun around and was in-turn struck by the west bound vehicle driven by Karen Woods. Four "A" type injuries were reported. "A" meaning incapacitating injury requiring hospitalization.

Washtenaw County Road Commission reports two reports of accidents at that intersection in 1991 their most recent file. One of those accidents resulted in a death of a local teenager.

In this week's Edition of The Manchester Enterprise

MFS Christmas Report.....	Page 2
Building, Part X.....	Page 3
Out & About.....	Page 4
The School Page.....	Page 5
Club News.....	Page 6
People & Occasions.....	Page 7
Church News.....	Page 8
Sports.....	Page 9
Classifieds.....	Page 10
Local Government.....	Page 11

Please deliver this copy of THE MANCHESTER ENTERPRISE to—
Manchester Library
P.O. Box 135
Manchester MI 48158