

OUT AND ABOUT by gar continued from page 4

of asparagus and shitake mushrooms with raspberry Butter Beurre Blanc. Foie Mignon topped with Foie Gras Mousse with grilled vegetables and sweet potato, red wine reduction completed our selections from the Grazing menu.

A desert table with over 20 items was available and we sampled some of the fare. Excellent, as a matter of fact we did not have room for an after dinner drink. The evening was truly wonderful and the company and service was the very best.

Breakfast buffet was good but not as outstanding as the evening meal. The train ride home and Fillet Mignon with all the trimmings capped an outstanding weekend.

If you wish to have a fantastic weekend try the trip to Toronto you will not be disappointed we weren't.

New Year's Eve Party '93

We supply: Ice, Cups, Plates and Glasses

Music by: D. J. Service To be Announced

GET YOUR TICKETS EARLY!!!



9:00 until ????

at the Manchester K of C Hall \$7.50

Bring your own: Drinks & Mix Appetizer to Pass

Sponsored By: Manchester Men's Club

Tickets @ Krauss' or contact Dave Kemner

313-428-8190

Sula Dalene Jeffers

ATTORNEY AT LAW

146 E. MAIN ST.

P.O. Box 625

Manchester

Stihl's FS-36 Trimmer Lightweight with dual-line "bump" head and powerful 30.2 cc engine. The most exciting and competitively priced trimmer in Stihl history. Named #1 by a leading consumer magazine.

\$129.95

Stihl's 026 Chain Saw Rugged and reliable, it's loaded with many desirable features that make it the top-ranked chain saw in the world. A serious saw for serious wood cutters. With 16" bar and chain. (Also available with 18" and 20" bars.)

\$369.95

Great Ways To Work Out.

Stihl's New BG 72 Blower Makes leaf blowing a real blast. Cleans sidewalks, driveways, patios, porches, decks, garages, truck beds, gardens, gutters and other hard-to-reach places. Even good for removing light snow. Optional vac attachment just \$24.95.

\$169.95

STIHL

Never Compromise.

Now during our HOT DEAL SALE, five of our most popular chain saws are available at savings of up to \$50! Prices start at under \$200.

K & W Equipment

1 mile North of Town

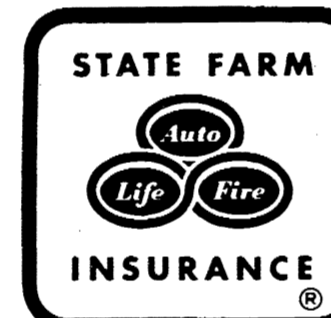
8am - 5pm Daily 428-7666

Like a good neighbor, State Farm is there.

See me for car, home, life and health insurance.

MATT DONNELON

305 Beaufort 428-8364



State Farm Insurance Companies • Home Offices: Bloomington, Illinois

CHELSEA HEARING AID CENTRE

Since 1984

Audiological Testing Hearing Aid Evaluation Sales & Service Batteries Insurance Welcome Doctors Referrals



134 W. Middle St. Chelsea, Mi. 475-9109 1-800-543-1965

HARRY THURKOW Hearing Instrument Specialist

Open Monday - Saturday Evenings by Appointment

DECEMBER BARGAINS AT MIDWEST FORD

Is Coming to Manchester ...

Bringing All These Presents

50 In Stock

1992 TAURUS From \$10,995 Great Selection Full Luxury

1992 TEMPO From \$7,995 Loaded-Low miles

1992 THUNDERBIRD \$11,995 Sharp-Loaded Low miles

1992 CROWN VITORIA \$15,995 TOTAL LUXURY

1991 MUSTANG CONVERTIBLE ONLY \$9,995 ONLY 15,000 miles

1992 MUSTANG LX HATCHBACK ONLY \$8,995 15,000 mi. Full Pow

*Ford Program Units - Just Add Tax, Title, & Plates

MIDWEST FORD

510 W. Main St. 428-8343

Mon & Thurs 9-8; Tues., Wed., & Fri. 9-6 Sat. 9-1

THE MANCHESTER ENTERPRISE

The Center of the Universe



125th Year - No 9

Manchester, Michigan

35c per copy

DOWN MEMORY LANE



We reprint a letter home from John Emory Irwin written during the Civil War in 1863. John was Don Irwin's grandfather and Don resides on the Irwin homestead, shown in the above picture. The deprivation of war is evident in this letter.

Tennessee Camp, December 24, 1863

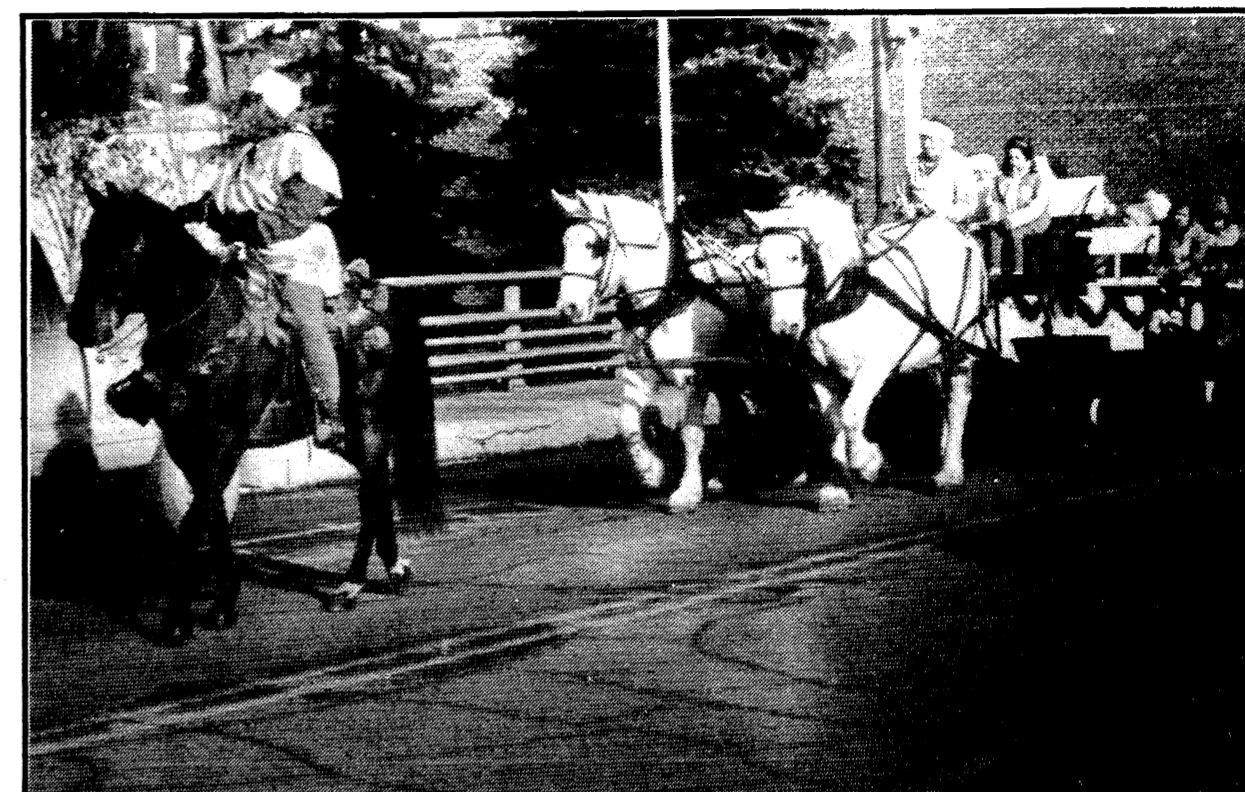
Dear Sister -

I wrote home a short letter with lead pencil the other day and I hope before this you will have read it. We have been here in camp ever since the enemy have left our front but we still remain inactive. Leem has arrived from Knoxville and is well as usual. He says he has just written to you. Horace is as well as usual. He had a boil or something on his foot and was unable to wear one of his boots a spell but it is better now. You know he is detailed as Provost Guard at Brigade Headquarters. There has been a rumor in camp for several days that the 8th Corp were going to relieve us from Baltimore and we were to take their place but after it got to be generally believed we have got

a counter rumor that several Regt's., including the 20th, were to remain in East Tennessee. So all our hopes of full rations, furlough and fine fare were suddenly dashed. It may be true yet, though.

I saw Bennett the other day, he came over here and found me. I didn't know him at first but remembered his countenance and recognized him when he told me his name. A day or two after I went over to the 23rd, which is within half a mile of us, to see him. I guess Leem has gone over now. You can't imagine how much good that needle and thread Mother sent me did. My pants were all out behind and I patched them on both seats and they were ripped in ever so many places and the pockets were all gone and I had no drawers and it was quite cold weather. I had an old vest that I found and by sewing in the back I made quite a vest of it and today I had the satisfaction of giving Pat Gorman, one of our men, enough to mend his old breeches into as comfortable a condition as mine were. We made out a requisition for clothing the other day but I haven't heard of it since and don't know when we will draw.

WE were paid off the other day. I had overrun my this year's clothing bill, some, and only got \$29.40. I was so badly in need of something to wear on my feet and prospect of getting shoes so slim and the service this fall so hard I thought I ought to have a pair of boots right away and so bought a pair, paying ten dollars for them, which is about even with the prices here. That need not make any difference about Father sending them however, if they already started - or wether they are or not - for I can dispose of them advantageously. Cont. Pg 16



George Macomber and his pretty team of "silver belles" brought SUNSHINE AND SANTA to Manchester Sunday. Children singing Christmas carols rode in the wagon in a parade through downtown and back to the K of C Hall where Santa listened to Christmas wish lists. Elf Brenda Classon and her jingle bell horse led the way.

Thanks to Kim Ricket of Ricket's Radio-TV Service and Santa's assistant elf Donna Berstum for making sure Santa was here for the Manchester children. Photo by Kathy Kueffner

LUMINARIA LIGHT THE WAY AGAIN ON CHRISTMAS EVE

by Teresa Benedict & Marsha Chartrand

Ever since Christmas Eve of 1977, Manchester has been warmed on December 24th by the beautiful sight of something as simple as tiny candles in white paper lunch bags. Each year the sight only becomes more beautiful as more and more families in town (and out of town) participate.

This breathtaking sight was first conceived in our village by Karen Hinkley and Sue Bond. Karen had grown up with luminaria in her home town of Bloomfield and she knew it would be effective here in Manchester, too. Karen and Sue went knocking on doors of all the homes on Ann Arbor Hill to elicit participants. They felt that if they could show the effect on one street in town, that the idea would catch on in subsequent years. Neighbors pitched in that first year and helped elderly home owners to get their bags prepared and candles lit. Karen had obtained all the supplies, and even dug sand at the Washtenaw County Road Commission yard. On Christmas Eve, 1977, it started to rain when it was time to light them, but everyone set them out and it still worked. In subsequent years, heavy snow, mist, fog, and just about every kind of weather has graced us, yet the Luminaria continue to light our streets as residents have set their candles

out at 6:00 PM Christmas Eve. Luminaria is said to have its origin in the sixteenth century when Mexican Indians set many luminaria (bonfires) on the patios of their churches and on the flat roofs of their adobe homes on Christmas Eve to light the way for the Holy Family. In the cities, these bonfires came to be replaced by the paper bags weighed with sand and a small candle placed inside. The American version is said to have begun in the southwest when the first wagon trains arrived from St. Louis in the early 1820's. The custom has spread as visitors to the southwest, impressed with the display of lights, bring the idea to their home towns.

In 1978, the Manchester Art Guild sponsored the second luminaria. Through 1983, Karen continued to coordinate the annual event. Then in 1984, Forest Walz and the Manchester Historical Society took over. The second year, the cost

of the bags, candles and sand to be set every ten feet in front of each home, was \$2.00. That year, the luminaria was extended to include both Ann Arbor Hill and Main Street from Wolverine to Union Street. A limited supply of additional kits was available for those living elsewhere in the village who wished to join in the luminaria.

Karen was right. The idea did catch on throughout the village. This year the luminaria is fifteen years strong and will be again distributed through the Historical Society. Complete instructions are provided with your sand, candles and bags.

"On Christmas Eve a candle light To shine abroad through Christmas Night, That those who pass may see it's glow And strangers may each other know."

Inside this week's issue of The Enterprise

Building, Part VI.....Page 3
Our Readers Write.....Page 4
Club News.....Page 5
People & Occasions.....Page 6
Church News.....Page 7
Community News.....Pages 8 & 9
The School Page.....Page 10
Local Government.....Page 11
Sports.....Pages 12&13

Please deliver this copy of THE MANCHESTER ENTERPRISE to: Manchester Township Library P.O. Box 540 Manchester, Mi. 48158

HOLIDAY/WINTER SAFETY

WINTER SAFETY TIPS

DRESSING FOR EXTREME COLD WEATHER

If you must go outdoors:
• Wear loose-fitting, light-weight warm clothing in several layers rather than a single layer of thick clothing.
• Outer garments should be tightly woven and water repellent.
• Wear a wool hat (The body loses between half and three quarters of its heat through the head.
• Wear mittens instead of gloves - they allow your fingers to move freely in contact with one another and will keep your hands much warmer.
• Keep your clothes dry — change wet socks and all other wet clothing as quickly as possible to prevent loss of body heat.

cation, flashlights, extra blankets, candles, heavy clothes, battery-powered radio

IF YOU USE A KEROSENE HEATER

Take the following precautions to prevent fires:

Store fuel in metal container outside. Don't overfill - expands as used. Don't fill while burning. Don't use to start a fire. Consumes oxygen - Keep windows open slightly. Keep heater clean and in good working condition. Have adequate space around heater.

FORECASTS AND WARNINGS

By observing storm warnings, adequate preparation can be made to lessen the impact of hazardous weather conditions.

COMMONLY USED TERMS IN WINTER WEATHER FORECASTS:

• Freezing Rain and Freezing Drizzle indicates rain that freezes as it strikes the ground and other surfaces forming a coating of ice.
• Sleet indicates small particles of ice, usually mixed with rain. If enough sleet accumulates on the ground it will make travel hazardous.
• Snow when used without a qualifying word, such as occasional or intermittent, indicates that a fall of snow is of a steady nature and will probably continue for several hours without let-up.
• Snow Flurries indicates periods of snow falling for short durations at intermittent periods. Accumulations are generally small.

PREPARE VEHICLE FOR TRAVEL FOR WINTER:

If you must travel in winter storms:
• Keep car in good condition.
• Keep gas tank full (this will keep water out of the tank).
• Travel by daylight and use major highways if you can.
• Drive with all possible caution.
• Have emergency winter storm supplies in your car such as: shovel, flashlight, windshield scraper, battery-operated radio, container of sand, first aid kit, battery booster cables, tow chain or rope.

PREPARE YOUR HOME FOR A WINTER STORM:
Be prepared with: canned/dried foods, prescription medi-



View from our bridge on Main Street the afternoon of the season's first heavy snowfall. — Photo by Lanettia Aldrich

• Winter Storm Watch indicates severe winter weather conditions may affect your area (freezing rain, sleet, or heavy snow may occur either separately or in combination thereof.)
• Winter Storm Warning indicates that severe winter conditions are imminent.
• High Wind Watch indicates sustained winds of at least 40 miles per hour, or gusts of at least 50 miles per hour or greater, are expected to last for at least one hour.
• Heavy Snow Warning indicates snowfalls of at least 4 inches in twelve hours or 6 inches in twenty-four hours are expected (Heavy snow can mean

lesser amounts where storms are infrequent.)
• Blizzard Warnings are issued when sustained wind speeds of at least 35 miles per hour are accompanied by considerable falling and/or blowing snow. Visibility is dangerously restricted.
• Travelers' Advisories are issued to indicate that falling, blowing, or drifting snow, freezing rain or drizzle, sleet or strong winds may make driving difficult.
• Wind Chill is the effect of wind, in combination with actual temperature, which increases the rate of heat loss to the human body.

Christmas Stationary Available at The Enterprise office. Two styles from which to choose. \$6.25 for 25 beautiful sheets.

MANCHESTER ENTERPRISE The Second Front Page: Building a House Part 6

For those of you that have been following the progress of my house and the idea behind this series of articles, here is an update.

The framing is complete, rough plumbing, heating and electrical are also done. Drywall has been hung, taped and sanded. As can be seen from the picture the siding is not up yet but it is being painted in the barn along with the trim. Interior trim work will start this weekend. Floor coverings, carpet and vinyl, scheduled for start on the 21st. It appears the only major conflict will be the tile work in the master bath. Richard Hoef's golf vacation put him a week behind.

Tom Rayer, painter, will have to be squeezed in between now and carpet.

B) Rough Frame continuing; PLUMBING

Once the frame is complete it is time for rough plumbing, mechanical (heat), and electrical wiring.

Here again the key to all three trades is finding good competent subcontractors. Ask your builder or lead carpenter, check with other home owner's, material suppliers. The word is out there, don't be afraid to ask questions.

Lets discuss rough plumbing first. Your incoming septic or sewer line will determine how much of your house can be serviced by gravity flow. The main sewer line in your house will

need a clean-out near the outside wall in case of a block in the line. As this trunk line is routed back into the house it will divide or have branches off from it to service bathrooms, laundry and kitchen. Traps, U shaped curves in the pipe, that will contain a small amount of water that prevents backflow of sewer gases. In turn these lines also have vertical vents, smaller diameter pipe, that go up through the roof, which allows air into the system for proper flow and release of sewer gas. Surprisingly there can be methane buildup that left unvented could be explosive.

Water lines feeding kitchen, utility, bathrooms and exterior water outlets feed from either the well pressure tank or the municipal water supply. The pressure tank is nothing more than a large air tight tank into which the water is forced by the well pump. Very little water is stored in the bottom of the tank. The top 80 or 90 percent of the tank is an air reservoir against which the water is forced. That column of air provides the pressure to maintain a constant flow of potable water. An adjustable pressure regulator switch starts and stops the pump. Low side pressure is generally about 40 psi (pounds per square inch), upper about 50 psi. This pressure will be set for your needs by the plumbing contractor.

Our area water is generally hard, (20 grains of calcium carbonate), with the inclusion of



After the 34th day of framing and the 38th day since footings started

iron, (about 2 to 4 parts per million). A good water softener will remove the hardness and some salt for the softener will remove most of the iron. Hardness, calcium carbonate will build up on the inside of water pipes over the years, it will look white, or rusty white, and that deposit can block or reduce water flow. If there is a significant amount of iron, that can and should be removed with additional treatment preceding the water softener.

Consider placing your outside water faucets on hard water. (Remember that in our climate outside faucets should have frost protected stems so they do

not freeze.) Using hard water for outside faucets reduces cost of salt and wear and tear on the softener. If a little iron in the stool is not a problem think about hard water for them. Better consult the boss on that one however because most women don't like a rust stain in the com-modes.

Air chambers should be installed in the water pipes to remove what is termed as water hammer. Water hammer is that loud clunk noise that can happen if a faucet is shut off quickly.

Air chambers are nothing more than a vertical piece of

pipe that will be above the water supply for the faucet. This provides a cushion of air that the incoming water can buck against when the faucet is sharply shut.

Now is also the time you should select fixtures and faucets. The color selection will be determined by your over all color scheme. In my case I selected white for all fixtures, using vanity top's, floor coverings and carpet with white or shades of grey. Accents will provide highlighting and allow changes readily.

Next week we will try and cover heating and electrical together.

313-429-4885 COUPON 517-423-2148
Saline in the Saline Shopping Center
\$99 Daily Wear Soft Contact Lenses
1ST OPTOMETRY eye care centers
Dr. Thomas Cunningham
Prescription Eyeglasses
DOES NOT APPLY TO OTHER DISCOUNT OFFERS OR PRIOR ORDERS

CLINTON FOOT & ANKLE CLINIC
301 W. Michigan ave.
Clinton, Mi.
517 - 456 - 4114
is now open and offering complete foot and ankle care for the entire family.
— Specializing in —
Reconstructive Surgery Laser Surgery
Sports Injury Warts
Infant and Child Disorders Ingrown Nails
Diabetic Care Fungus
Foot and Ankle Injuries Nerve Pain
Heel Pain Skin Problems
Foot Pain Bunions
Hammertoes Calluses
Orrhotics (Custom Casted Shoe Inserts)
DAVID R. LEVITSKY, D.P.M.
Board Certified Surgeon
Member of: American Podiatric Medical Association
Michigan Podiatric Medical Association
HOURS:
Wednesday/Fridays 10:00 - 5:00 p.m.
Saturdays 10:00 - 12:00
Please call for appointment - Most insurances accepted

HOLIDAY GREETINGS FROM THE SERVICE DEPT. AT MIDWEST FORD
The Home of:
Personalized Service
Guaranteed Work
Factory to Consumer Connection
Local Shuttle
Free Coffee
Early Bird/Night Owl drop off box
Certified Mechanics
NEW Oil Change Club - Buy 9, get 10th FREE
We are New & Improved. Committed to Quality
Your Satisfaction is our Main Goal. Call us for any mechanical need.
428 - 8343
510 W. Main M-F 7:30 - 5:30

THE MANCHESTER ENTERPRISE
109 East Main Street
Manchester MI 48158
(313) 428-8173
USPS No. 327-460
The Manchester Enterprise is published each Thursday at 109 East Main St., Manchester, MI 48158, with second class postage paid at the Manchester Post Office.
POSTMASTER: Send Form 3972 to: Manchester Enterprise, P.O. Box 37, Manchester, MI 48158.
The Manchester Enterprise, Inc.
Editor & Publisher Emory Garlick
Associate Editor Kathy Kueffner
Sports Jon Hardenbergh
From Desk Lanettia Aldrich
One-year subscriptions are \$15 within Washtenaw County, \$18 outside the county.
Deadline for display ads, photos, classifieds and news articles is Monday at 3:00 p.m.
© The Manchester Enterprise 1992. No part of this publication may be used without the written permission of the publisher.

IMMEDIATE OCCUPANCY
Tremendous Savings on Model Homes on Premier Lots in Manchester Manor
28' x 64' - 3 Br. 2 Bath, Family Rm, Morning Rm, Complete w/ draperies & deluxe appliances 1685 Sq. Ft. \$46,900
28' x 60' - 3 Br. 2 Bath Family Room, Fireplace, all deluxe appliances 1580 Sq. Ft. \$44,900
28' x 48' 3 Br. with Large Deck \$31,500
16' x 66' 2 Br. 1 Bath, Front Kitchen, Great Starter Home. 1023 Sq. Ft. \$23,900
16' x 66' 3 Br. 2 Full Baths, Separate Utility Room. 1023 Sq. Ft. \$24,900
16' x 68' Deluxe 2 Br. 2 Baths Master Suite w/ Luxurious Decorator Bath & Skylite. 1054 Sq. Ft. \$27,900
Celebrate the Holidays in Your New Home @ Manchester Manor
60' x 12' Driveways Long Term - Low Rate - Bank Financing
MASON HOMES
Call @ 428 - 2100 or Stop by
10-6 Mon - Fri. 10-5 Sat. & 12-5 Sun

"I feel 10 years younger!"
"An incontinence problem was taking away my self-confidence, until treatment gave me back the freedom to do the things I enjoy. I'm in control again, and treatment was so much easier than I expected. Why did I wait so long to get help?"
Ann L. Oldendorf, MD, Medical Director
Howard R. Usitalo, MD Douglas M. Portz, MD
For a confidential consultation, call (313) 475-0817.
Chelsea Contenance Care
Medical & Surgical Treatment of Incontinence
515 South Main Street, Chelsea

Editorial / Opinion

Our Readers

Write -

Dear Editor:

My letter to you has a two-fold purpose: One is to express my disappointment with your newspaper for the distasteful cover photograph in the December 3rd issue. Is the *Enterprise* now a malicious gossip tabloid after circulation? It was bad enough that some spineless, illiterate, swine(s) used graffiti to slander one of the most respected families in our neighborhood by defacing private and public property; but your publication had to add injury to insult by actually printing the garbage on the front page. *The Enterprise* has done more damage than the graffitist(s) and you should print a public apology to the Bialecki family.

My second purpose to this letter is to inform you and the general public about the facts surrounding Iron Creek Mill Pond.

(1) Iron Creek Mill Pond is a private lake—period. There is not now, and never has been, a public access to the lake. Access by the public in the past was funneled through the Whiteman family marinas which they strictly controlled. The marina

and access are now closed due to economics and the high cost of liability insurance.

Al Whiteman Sr. owns 95% of the property on the bottom of the lake and all of the portion of the shoreline (whether one foot or ten feet) along Sharon Hollow Road from the bottom of the hill around the corner to Lyle Moore's property — the entire balance of the shore front is private property. Technically, by definition from the D.N.R., the water belongs to everyone, but no person may cross over posted property to access the lake. That is recreational trespassing by the law.

Launching a boat from a trailer while blocking a public roadway and emergency vehicles is against the law. The county easement line does not extend out into the water off Sharon Hollow Road from the true center of where the road should be.

In the early 1970's, the dam was blown out by explosives. The culprit is anyone's guess. In an effort to save the lake, Mr. Bialecki, the Lake Association and other agencies created an earth dam to stop the leak. A court argument ensued with respect to the water level of the lake. The end result was that in

order for the County Drain Commissioner to set and regulate the level, the dam ownership would have to be transferred over to the county. The dam was sold to the county which in turn set up a special tax assessment district which consisted of 45 lakefront and area property owners who have since paid for the dam.

In the early 1980's, the Road Commission straightened out Sharon Hollow Road and made it much wider. The Road Commission wanted to widen the bridge over the dam but the cost for the local residents was too great, so it was decided to repair the old bridge. But this left a very large unused road surface on the opposite side of Sharon Hollow Road north of the dam. This is the actual width of the road (as surveyed) with the center several feet back from the narrow bridge. If the bridge ever gets widened, this unused area will be roadway. This area is not a parking area. Since the marina has closed, it has been perceived as such and this is where the problem lies.

This area in the recent past has been a gathering place where loud, vulgar, late night parties, drug trafficking, drinking and public nudity were common place. Some of the people that were launching boats from the road were throwing trash in the lake, using the lake as a toilet, and leaving their ice shanties to fall through with the thaw.

(3) The Iron Lake Association was established formally in 1953. It was established to "formulate friendly neighbor relations and to regulate by majority matters pertaining to the Iron Lake area." Much to the disbelief of some, the association represents 65% of the 38 lake front land owners. In 1991, a survey was taken of member and non-members around the lake. 85% of those surveyed considered the closing of the illegal parking area and boat launching from Sharon Hollow Road a top priority. The reasons for doing so were simple. Lake front ri-

Editor's Comment

Last week we printed a letter from Martin Bialecki taking issue with the previous weeks front page story. Well, Martin, I listened to you at 10:30 PM when you were complaining to me about the sign desecration, the Township officials' disregard of your plight and specifically Lyle Moore for not apprehending the culprits. I also noted you did not want to go on record or be quoted.

It is difficult at best to write a second-hand story. It is even harder writing a story without putting the writer's personal thoughts and comments into the text. I try to present the facts the best that I can, unfortunately not always successfully.

More importantly I will continue to try presenting local issues that have relevance to our community. We will print responses that take issue with our stance. If the paper is the Empty prise, only if you disagree with it, then maybe we are doing the job. EWG

parian owners want to take back their neighborhood and protect the lake they came here to enjoy from those who abuse it.

Sincerely, Mark A. Zimmerman, President Iron Lake Association

Dear Editor,

I've kept quiet for a long time, but things are finally getting to me. Why all this opposition to any business or progress in Manchester Village and the surrounding townships? Don't people realize that not all of us have high-paying out-of-town jobs in an auto plant or in Ann Arbor? How are we supposed to cover these horrendous property tax bills, 10 times or more as big as 25 years ago? I have a recurrent nightmare where we are surrounded by a pack of wolves, all hoping to drive us off our farm and out of here; if you are "part of the pack", you know who you are. Several years ago, we were listed for the tax sale in May and what a nightmare that was!!! Also, what a scramble to raise the tax money in time.

Our gravel royalties do get recycled into the community, you know. I realize that none of you want 40-yard gravel trucks going by your home, so how about some cooperation in finding another way out to M-52? So far we've been shut out from using Hibbard Road (I suspect it was deliberately not built strongly enough for use by gravel trucks), and how we stand to lose our only other route, Parr north to Bethel Church to M-52, on December 19th).

My husband Bob got a ticket on September 17 for "driving around a barricade and on a closed road" (Hibbard). He took

this to court in Ann Arbor, and the judge thought it was ridiculous for the Village to cut us off for two weeks from driving downtown, and threw out the \$70 ticket. No wonder no one shops in Manchester -- "You can't get there from here". It's a long, bumpy road up Parr Road north, across on Bethel Church Road to M-52 -- impossible for Bob to come home on his half-hour lunch period at that distance (as he has for over twenty years). Anyway, the judge thought it was silly to cut us off from town for two weeks to get rid of gravel traffic - Manchester Village looks pretty petty to the County about now.

Seems to me the purpose of a local paper should be to chronicle local news, not to be a forum for personal prejudices and crusades. Let's have a little more common sense around here.

Sincerely yours, Lois Hansen (Mrs. Robert V. Hansen)

P.S. The December 10th issue was a great improvement - now why can't you find positive things to report every week? Leave the feuds and rumors to the coffee shop crowd.

The Manchester Enterprise welcomes letters to the editor. Letters must be signed and, unless special consideration is warranted, only those letters with valid signatures attached will be considered for publication.

The Enterprise reserves the right to edit letters.

To the Editor of the Manchester Enterprise and persons in the Manchester area who are concerned with the gravel pits and gravel trucks on Pleasant Lake Road — Manchester Pit #9 in particular:

On Wednesday, December 9, 1992 at approximately 12:35 p.m. I was driving down Pleasant Lake Road on my way to work. As I came upon the road to the Pit, I could see a double gravel truck, which was burgandy with the number 92 on it, coming down the Pit road. For some reason I could tell the truck wasn't going to stop, which he didn't, until he pulled right in front of my car. He stopped the truck right in the center of the lane I was in and just sat there.

Had I not been paying attention to my driving, and his, I could have ended up in the side of his truck instead of merely feet away. What a SCARE!!!

When I got to work, I called the Sheriff Department in Ann Arbor only to find out that because there was not an actual accident, and because I couldn't see the driver's face, there was nothing that could be done.

It is my understanding that this happens frequently on Pleasant Lake Road. DOES SOMEONE HAVE TO BE KILLED BEFORE SOMETHING IS DONE ABOUT THIS!?

A cornered citizen, Elsie O'Dell



The Manchester Enterprise
109 East Main Street
Manchester, Michigan 48158
SUBSCRIPTION

Washtenaw County \$15/year Other \$18/year

Name _____
Address _____
City _____ Zip _____

Units Now Available

SHARON VALLEY MINI STORAGE
1990 Sharon Valley Rd.
(Near corner of M-52 behind Kleinschmidt True Value Hardware)
10 X 12 \$35/ Mo.
10 X 24 \$65/ Mo.
428 - 9360

CLUBS/ANNOUNCEMENTS

American Legion Auxiliary

The American Legion Auxiliary met at the Legion Hall on December 9, 1992, with 29 members and one guest present. Roll Call was taken by the secretary and the minutes of the November 11, 1992 meeting were read, corrected and approved.

Helen Popkey reported 40 poinsettia plants will be distributed to community shut-ins for this holiday season.

The guest for this meeting, Arla Stadler is now our new member. Welcome aboard, Arla. We need one more member to bring us up to our quota of 110.

Della Widmayer reported four Gold Star mothers will be remembered this holiday season.

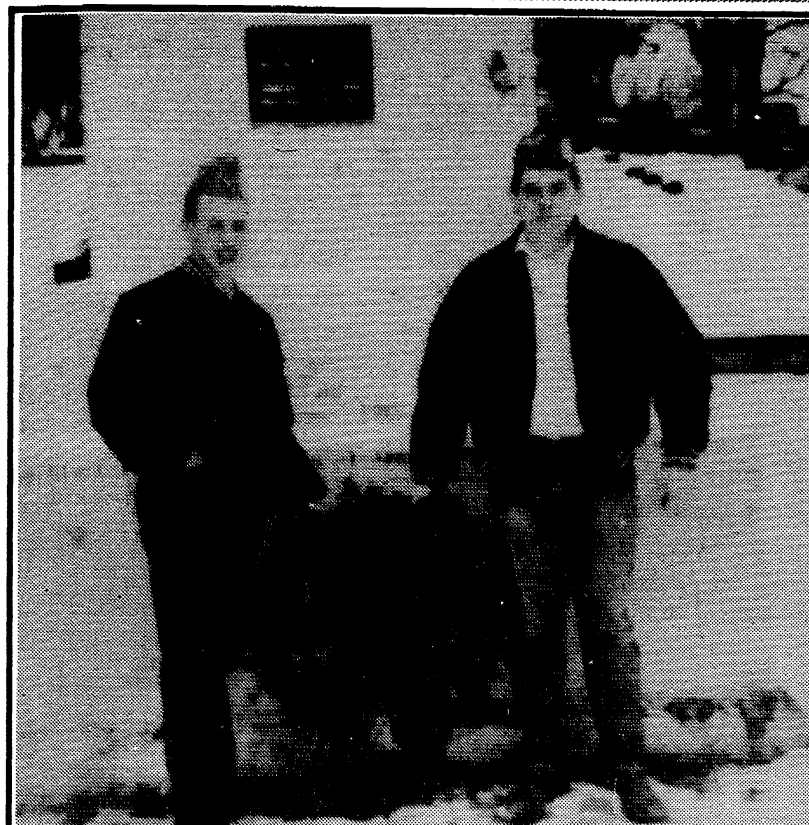
Vivian Middlemiss reported a successful trip to Ann Arbor Veteran's Hospital for the Christmas Gift Shop. Many veteran patients will have a "Merry Christmas" as their families thanks to the efforts of many American Legion Auxiliary volunteers.

Vivian also reported 16 Christmas cards and "token remembrances" have been mailed to area military personnel. Hope we didn't miss anyone.

Maggie Tapping provided forms and stamped envelopes for everyone at the meeting to write U.S. Postmaster General to issue stamp commemorating POW/MIA. The need to keep this issue before the public is crucial until every American POW/MIA is accounted for. The address for the Postmaster General will appear in the next A.L. newsletter.

Refreshment committee for January meeting will be Polly Browkaw, Alice Alexander and Joyce Sroufe.

The meeting was adjourned at 9:30 p.m. with a prayer by our Chaplain, Vivian Middlemiss.



Jim and John Schiel, sons of American Legion members, placed a wreath Sunday on the monument at Oakgrove Cemetery for Christmas. Sons of American Legion have placed a wreath on the monument every year since 1981.

Shakespeare Reading Club

The Shakespeare Reading Club met at the home of Lenora Parr on December 9 for a holiday lunch. Memories were shared and carols were sung.

The next meeting will be on January 12 at 2:00 p.m. at the home of Jane Korh. She and Annette van der Schalie will discuss the Galapagos Islands and the jungle.

PUBLIC AUCTION

Dump Truck - Dozer - Concrete Pavers - Farm Equipment - Antiques - Beautiful Parlor Stove

We will have a public auction at 9925 Kies Road, Manchester, Michigan. Located 12 miles west of Saline or 3 miles east of M-52 (Manchester) south of Austin Road

Saturday, December 19, 1992 at 11:00 a.m.

-CASE 1150 DOZER W/4 WAY BLADE -MASSEY FERGUSON 3165 D LOADER - BACKHOE W/12' BOOM -1970 CHEVY STAKE - DUMP 366 ENGINE W/5 SPEED HYDRAULIC BRAKES -1968 CHEVY 427 GAS TANDEM DUMP TRUCK W/10 SPEED ROAD RANGER AND 13' ALUMBOX & AIR -1963 REO DUMP TRUCK - GAS - GOLD COMMET ENGINE - 5 - 2 AIR -1972 REO DUMP 220 CUMINS 10 SPEED ENGINE - TANDEM - AIR -74 BROCKWAY PARTS TRUCK 290 CUMINS W/13 SPEED ROAD RANGER -1965 FORD 750 W/CEMENT MIXER - A REBUILT 361 ENGINE - 5 SPEED W/2 SPEED REAR END -10 2'x8' CEMENT FORMS -10 4'x8' CEMENT FORMS

Several palets concrete pavers, Keystone retaining wall blocks, spool 1/2" cable, heavy duty chainfall, 2 wood extension ladders,

Good saddle tank, 12 wheel trailer w/pintal hitch, 6"x6"x12' treated posts, rough sawn gate boards, 60 8" 3pc RR crossing ties, garbage paker (rough), 100 gal and 500 gal above-ground fuel tanks w/electric pumps, several pieces non-skid metal, old barn siding, set of loader palet forks, 3 beater silage wagon, 3 pt. post hole digger, loader frame that fits 35 or 135 Massey, 6 farrowing crates, 3 ton round hog feeder, 7 tube cattle gates, 7 wire cattle panels, 8 hog panels, International 1150 feed grinder, wooden gates, stock tanks, Howe 1000lb platform scale, torches, gauges, hose, 2" trash pump w/gas engine

1930's and up license plates, beautiful Verdict 176 parlor stove w/nickle trim, pot belly stove, sewing rocker, slant front display cabinet, Eastlake settee w/matching side chair, oak Wondertone victrola, 1930's pull out sleeper couch, grandmother clock, old lamp table, cane chair, fainting couch, 2 old arm chairs, oak arm chair, Duncan Phyfe table, zinc top work table, art nouveau dining table, wood and iron park bench, Delft china plate

Pine wash stand (not old), modern dining table w/6 chairs & fancy china cabinet, 2 octagon tables w/mable inserts, microwave stand, 2 wardrobes, steamer trunk, oak file cabinet (new), cement statuary & bird bath, school desk, cupboard bottom, painted bedroom outfit, desk, bicycles, thermopane windows, Kirby vacuum, dress, sled, file cabinet

1985 Renault Encore 4-door
INSPECTION DAY OF SALE. TERMS: CASH OR CHECK WITH PROPER I.D. NOTHING REMOVED UNTIL SETTLED FOR.

FARM OFFICE PHONE (313) 428-9078
OWNER: SCOTT & AMY POWERS

Braun & Helmer Auction Service
Lloyd R. Braun, CAI Jerry L. Helmer, CAI
Ann Arbor 313-665-9646 Saline 313-994-6309

SENIOR CITIZENS NEWS

— T. V. Ludwick

Here we are rushing around again in this holiday season and swear that next year we will get all these things done earlier. I have these friends who are organized. They have their shopping done and wrapped, those pesky letters all written to place inside cards and house squeaky clean. Christmas dinner could be put on the table tomorrow, as they have some of it cooked and in the freezer. And then I get to the cookie department, which amazes me that lebkucken are baked (or curing). I honestly have never baked those, but pat me on the back, my date pinwheels are in the freezer waiting for someone to take them out and place them in the oven.

I see that Gale Koebbe has been on time once again. How many times a day do we look up at the water tower and appreciate his mountain climbing? The lighted tree way up there delights old and young. Thanks, Gale and helpers, for this annual treat. It certainly must be a job he enjoys after many years.

Thursday, December 17: Today is the last senior meal for 1992 and it is also one to enjoy. Jan Barbour and crew in the kitchen of Emanuel will serve a ham dinner to lucky seniors who attend. Call either Linda at 428-8359 ahead, or Jan at 428-7630 before 10:30 on meal days for your reservation. After the first big snow of last week, we need to remind all seniors that if school

is closed that day, senior meals are, too, due to weather conditions. Occasionally school is closed on a meal date, but that won't affect our stomachs.

"A BUG IN HIS EAR": We have heard a marvelous seasonal story about the warmth and generosity of folks in small town America.

It was a special day for Eddie, son of Robert and Rosemary Hamilton on Ann Arbor Hill. Not only could he watch the water tower tree spring up and be decorated magically by Gale Koebbe and Gary Weidmayer, Eddie communicated with Gale by walkie-talkie (real firemen's). Excited? The joy and wonder in both eyes and voice would have made a treasured videotape. As Gale and Gary walked round and round stringing lights, Eddie listened to his special friends at work. At last, Eddie's "own personal tree" was lit and at his invitation, "Come to my house for coffee" was rewarded by a visit. Hugs were exchanged by this very excited young man and his special friends. Mom Rosemary stated that blinds in his room are up to let the lights on his tree in. He willingly allows all others to share in his enchantment.

This story couldn't have been written without Gale's mother, Milda and his wife, Mary Ann, who put "a bug in Gale's ear" and helped plan this heart-warming event.

C. Schmitt Roofing & Siding

• Licensed and Insured •

All types of roofing, siding and repairs
• 5 year guarantee on all labor •
Quality materials and workmanship

(313) 428-8178

Corey Schmitt • 7940 Ernst Road • Manchester, Mi. 48158

THE AURA INN

11275 Pleasant Lake Road Phone 428-7993

FROG LEG DINNER

FRIDAY December 18th
Starting at 6 p.m.

December 20th
Christmas Party 8 p.m.

Saturday December 26th
Karaoke - 9 p.m.

NEW YEAR'S EVE PARTY
Rotisserie Chicken Dinner 6 p.m.

Karaoke - 9 p.m.

HOURS: OPEN EVERYDAY 12-12, except Mondays

Marty's

Plumbing, Heating, & Air Conditioning

517-592-8144

Brooklyn
35 years experience

We now have our mail slot installed in the front door of The Enterprise. If you use the mail slot to submit articles or ads, please remember to include your name and phone number in case we have to contact you. Thank you.

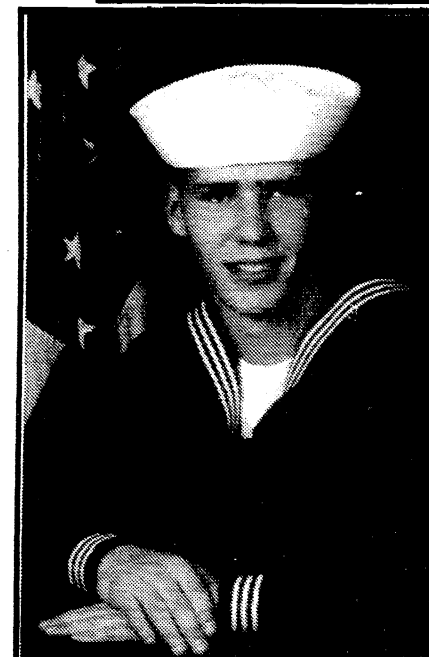
Carpentry, remodeling & renovation



TED MICKA

Specializing in Older Homes & Barns
Licensed & Insured
(517) 536-4371

PEOPLE & OCCASIONS



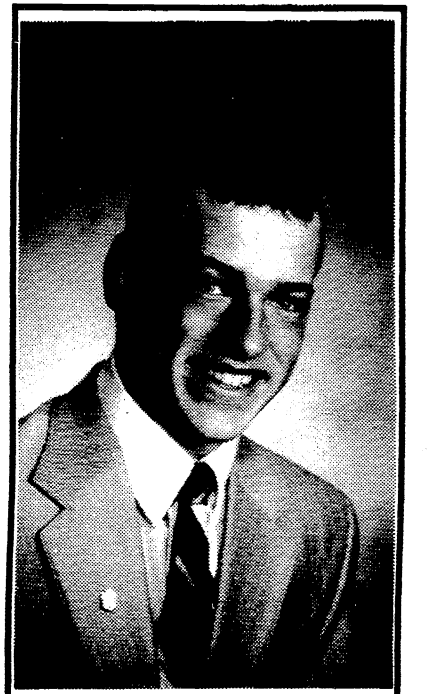
Tennant Graduates From Great Lakes Camp

Keith Edward Tennant, son of Debra and David Tennant of Manchester and brother of Dawn Tennant, graduated as Seaman Apprentice from Great Lakes, IL boot camp November 6, 1992.

Keith graduated from Columbia Central in 1992 and enlisted in the United States Navy in September.

He is stationed in Charleston, SC aboard the USS Nicholson DD9A2.

Schiel Attends Convention



John Schiel, son of Charles and Joanne Schiel of Manchester, attended the FFA National Convention in Kansas City, MO, November 9-15.

He attended many meetings, one of the most interesting being on farm safety. At this meeting he met a young man who had gotten overcome with anhydrous ammonia and had only three months left to live. Last week John received word from Coopersville that the young man had passed away.

John was chosen as a Michigan delegate and carried the Michigan flag. There were over 50,000 young men and women in attendance. It was a very interesting and educational trip.



The Christmas lights go up in downtown Manchester.

Schmitt Re-Elected to NGWA Board

John Schmitt, owner and president of J. P. Schmitt & Co., Manchester, has been re-elected to the board of directors for the National Ground Water Association (NGWA). Elections were held during NGWA's 44th annual National Convention and Exposition in Las Vegas.

Schmitt has been a member of NGWA for 26 years.

The NGWA is a not-for-profit professional society and trade association representing all segments of the ground water industry. Its more than 24,000 members from nearly 70 nations include the world's leading ground water geologists and hydrologists, ground water contractors, engineers, manufacturers, and suppliers of ground water-related products and services.

Morley Returns From Persian Gulf

Navy Seaman Apprentice Roy D. Morley, son of James and Joan Morley of Grass Lake, MI, recently returned aboard the destroyer USS Conolly, homeported in Norfolk, VA from a six-month deployment to the North Red Sea and Persian Gulf.

During the deployment, USS Conolly joined the multinational force, operating in the North Red Sea and conducted 118 boardings of motor vessels enroute to and from the Gulf of

Aqaba in support of the United Nation's sanctions against Iraq.

Morley participated in exercises Gulfex XIII and Nautical Swimmer with a multi-national naval force. Morley visited Athens, Greece; Hurghada, Egypt; Jabail, Saudi Arabia; Bahrain; Abu Dhabi, United Arab Emirates; Rhodes, Greece; Benidorm, Spain.

The 1990 graduate of Napoleon High School, Napoleon, joined the Navy in July 1990.

Free Of Routine Duties Now for the "Honey Do"-ties. Includes a photo of a man and a Santa Claus illustration.

Wacker's General Store advertisement featuring images of ice cream tubs and a woman's face.

Wedding Magic advertisement for candlelight collections, including text about invitations and announcements.

Wacker's General Store advertisement listing various ice cream flavors and winter hours.

1993 Calendars Are Here advertisement for the Manchester Area Historical Society, featuring a 125th birthday commemorative plate.

CHURCH NEWS

CHURCH DIRECTORY

EMANUEL UNITED CHURCH OF CHRIST—Rev. Paul Kuntzman, Senior Pastor, Rev. Nancy Doty, Associate Pastor; Telephone: 428-8359; Worship 10:30 a.m., 11:30 a.m. Coffee & Fellowship

MANCHESTER UNITED METHODIST CHURCH—Rev. Marsha Woolley, Pastor; 501 Ann Arbor St., Manchester, Telephone: Parsonage 428-8013, Church 428-8495. Sunday School 9:00 a.m.; Worship 10:30 a.m.; Coffee/Fellowship 11:30 a.m. Church office hours—Tuesday, Wednesday and Thursday 8:00 a.m. until 11:00 a.m.

ST. MARY'S CATHOLIC CHURCH—Rev. Francis J. Murray, Pastor; Telephone 428-8811; Masses: Monday thru Wednesday, Friday 8:30 a.m., Thursday 7:00 p.m., Saturday 5:00 p.m., Sunday 8:30 a.m. and 10:30 a.m.

FAITH COMMUNITY CHURCH—Scott Engelman, Pastor, 8400 Sharon Hollow Rd. off W. Austin; Telephone 428-8709; Worship Service 10:00 a.m.; Sunday School 11:30 a.m., Sunday Evening Service 6:00 p.m.; LIFELINE 7:30 p.m.

VICTORY BAPTIST CHURCH—Rev. R. Dean Cooper, Pastor; 423 South Macomb, 428-7506; Sunday School 10:00 a.m.; Morning Worship 11:00 a.m.; Evening Public Bible Class 6:00 p.m.; Wednesday Praise and Prayer 7:00 p.m.

BETHEL UNITED CHURCH OF CHRIST—Rev. Roman A. Fleineck, Pastor; 10425 Bethel Church Road at Schneider Rd.; Phones: Parsonage & Church 428-8000/429-7175; Church Service 9:30 a.m.; Sunday School 10:45 a.m.

SHARON UNITED METHODIST CHURCH—Rev. Peggy Paige, Pastor, Corner of M-52 and Pleasant Lake Roads; Telephone 428-7714; Church School 10:00 a.m.; Worship 11:00 a.m. Phone 428-8430

ST. JOHN'S LUTHERAN CHURCH—Rev. Dennis A. Falk, Pastor, Austin Road, Bridgewater; Telephone 429-7434; Sunday School 9:15 a.m.; Worship 10:30

NORTH SHARON BAPTIST CHURCH—Bill Winiger, Pastor; Clifford W. J. Whitenburg, Assistant Pastor, Sylvan and Washburn Roads; Telephone 428-7222; Sunday School 10:00 a.m.; Morning Church 11:00 a.m.; Evening Church 7:00 p.m.; Wednesday Bible Study 7:00 p.m.; Youth Meetings 7:00 p.m.

IRON CREEK COMMUNITY CHURCH—Tom Butterfield, Pastor; English and Sharon Hollow Roads; Sunday School 10:00 a.m.; Morning Church 11:00 a.m.; Sunday Evening 7:00 p.m.

ZION LUTHERAN CHURCH—Rev. Mark A. Weirauch; 3050 S Fletcher Road; Telephone: Pastor 475-3481, Church Office 475-8064, Susan Wiley, Secretary 428-7268. Sunday School 9:00 a.m.; Worship Service with Holy Communion 10:15 a.m.

ST. THOMAS LUTHERAN CHURCH—Rev. John Riske, Pastor; 10001 W. Elsworth Rd., (5 miles North and 6-1/2 East of Manchester); Telephone 663-7511; Schedule: Church Service 10:45 Sunday, Bible Class and Sunday School 9:30 a.m.

ST. JOHN'S UNITED CHURCH OF CHRIST—Rev. Nancy Doty, Pastor; 12376 Waters Road, Waters and Fletcher Roads, Rogers Corners; Worship and Sunday School 9:00 a.m.

CLINTON ASSEMBLY OF GOD—Rev. Richard Coury, Pastor; 13300 Clinton Manchester Road, Clinton; Phone 517-456-7510; Sunday School 9:30 a.m.; Worship 10:45 a.m.; Sunday Evening 6:30 p.m.; Wednesday Prayer, Bible Study, Youth 7:00 p.m.

CHURCH OF JESUS CHRIST OF LATTER DAY SAINTS (MORMONS)—Samuel M. Skidmore, Branch President; 1330 Freer Road, Chelsea, Sacramento 9:30 a.m.; Sunday School, Primary 10:40 a.m.; Priesthood Relief Society, Aaronic Priesthood, Youth 11:40 a.m. For more information call 517-456-7876/313-475-1778

CHELSEA FULL GOSPEL CHURCH—John and Sarah Groesser, Pastors; 11452 Jackson Road (Lima Town Hall) 313-475-7379; Sunday 10:15 a.m. Prayer, 11:00 Morning Worship Service, 6:00 Evening Worship Service; Wednesday 7:00 p.m. Church School, all ages (call for location)

UNITY CHURCH OF JACKSON—3385 Miles Road, Ackerson Lake, Jackson, MI; 517-764-6900; 11:00 a.m. Sunday Services and Sunday School

COMMUNITY BIBLE CHURCH—Pastor Jody Riethmiller, meets at the Manchester Middle School in Manchester; Worship 10:00 a.m., Sunday School following; Evening Service 6:00 p.m.

NEW LIFE CHRISTIAN CENTER—50 Freer Rd. (Covenant Church); Pastors Erik & Mary Nansen; Sunday 12:30 p.m. Praise, worship, Children's Church, 6 p.m. In-home meetings; 1st Monday of the month 7 p.m. Women of Faith meet in homes, every Thursday 7 p.m. Praise and prayer.

ST. THOMAS LUTHERAN CHURCH Wednesday, December 16: 8pm Midweek Advent Worship at St. John's

Sunday, December 20: 9:30am Sunday School, 10:45 Worship with Communion

Thursday, December 24: 7:30pm Christmas Eve Children's Program

EMANUEL UNITED CHURCH OF CHRIST Wednesday, December 16: 6pm Bell Choir, 7:30 Adult Choir and Church Council

Thursday, December 17: 12 Noon Senior Meal, 3:20 Cherub Choir, 3:40 Children's Choir

Sunday, December 20: 9am Sunday School, 9am Early Advent Worship, 9:45 Fellowship Time for the Organ Fund, 10:30 Special Music of the Season by the Adult Choir, 11:30 Fellowship Time for the Organ Fund

Monday, December 21: 6:00pm Weight Watchers, 7:30-9 p.m. Live Nativity Scene

Tuesday, December 22: 7:30-9pm Live Nativity Scene

Wednesday, December 23: 7:30-9pm Live Nativity Scene

Thursday, December 24: 7-11pm Christmas Eve Candlelight/Communion (Altar) Worship, 7pm Special Music by Cherub & Children's Choirs, 11pm Special Music by Bell & Adult Choirs

ST. MARY'S CATHOLIC CHURCH Wednesday, December 16: Adult Choir 7-9pm

Thursday, December 17: Sacrament of Reconciliation 7:30pm

Saturday, December 19: Sacrament of Reconciliation 11:30-12 noon, 4-4:45pm; Children's Choir 4pm

Tuesday, December 22: Sacrament of Reconciliation 4-4:30, 7-8pm

Wednesday, December 23: Sacrament of Reconciliation 12noon-12:30pm, 7-8pm; Adult Choir 7-9pm

ZION LUTHERAN Wednesday, December 16: 7:15pm Senior Choir

Saturday, December 19: 9:30-11am Christmas Program Rehearsal

Sunday, December 20: 9am Sunday School, 10:15 Worship-Choir Cantata, "I Believe..." 7:30pm Sunday School

Christmas Pageant. Tuesday, December 21: 7:15pm Senior Choir, 7:30pm Shuffleboard

Thursday, December 24: 7:30pm Candlelight Christmas Eve Service with Holy Communion

SHARON UNITED METHODIST CHURCH Wednesday, December 16: 8:15pm Chancel Choir practice

Thursday, December 17: 6:30pm Ladies Christmas Dinner and Devotions

Saturday, December 19: 9:30-11am Church School Program practice

Sunday, December 20: 11am Chancel Choir will present the Cantata, "King of Kings" by John W. Peterson.

7:30pm Church School Christmas Program

Thursday, December 24: 8pm Candlelight Christmas Eve Service

MANCHESTER UNITED METHODIST CHURCH Wednesday, December 16: 12noon UMW, 3:15 Scouts, 7:30 Care & Share

Thursday, December 17: Evening MFS Shop set up, 6:30 Bell Choir, 7:30 Bell Choir, 8pm Administrative Council

Friday, December 18: 9am MFS Christmas Shop

Sunday, December 20: 9:30am Sunday School, 10:30 Worship, 11:30 Coffee/Fellowship

Tuesday, December 22: 7:30 Advent Bible Study

Thursday, December 24: 7pm Family Christmas Eve Worship, 11pm Christmas Eve Worship

BETHEL UNITED CHURCH OF CHRIST Thursday, December 17: 6:15 Children's Choir, 7:15 Youth Choir Plus

Saturday, December 19: 9am Confirmation Class

Sunday, December 20: Fourth Sunday in Advent. 9am Sunday School Teachers meet, 9:30 Worship Service, 10:30 Church School Christmas Practice, 7pm Church School Christmas Program—Cradle Roll Children introduced; punch, coffee & cookies after program

Monday, December 21: 7pm All Fellowship & Congregation Caroling

Tuesday December 22: 6pm Children's Choir rehearsal, 6:30 All Choirs Put Luck-After dinner all choir rehearsal

Thursday, December 24: 7:30pm Carol Candlelight Worship Service Christmas Eve

ST. JOHN'S BRIDGEWATER Wednesday, December 16: 6:30 Jr/Bell, Midweek Advent Service at St. John's 8pm, Sr. Choir 9pm

Thursday, December 17: 8pm Men's Bible Study at Clyde Krugers

Saturday, December 19: 6-8pm Junior Choir dress rehearsal

Sunday, December 20: Sunday School 9:15, Worship 10:30 with Junior Choir Musical Christmas Caroling & Get-together 6pm

Monday, December 21: 7:30pm Church Council

Tuesday, December 22: 12:30pm Sewing Bee

Thursday, December 24: SS Program 7:30pm, Candlelight Service 11:30pm

ADVENT

Christian people are beginning to rediscover the meaning and power of Advent. No longer captivated by the countdown of "20, 19, 18 shopping days until Christmas," we are beginning to see what a rich experience Advent can be when separated from the mad rush to buy, buy, buy. Advent is loaded with opportunities to prepare ourselves for the genuine joy our celebration of Christmas is meant to bring.

Advent is a time to slow down and practice the art of waiting patiently. Advent is a time to relish looking forward, a time to reinvigorate the spirit, to recall the reason why we celebrate.

Advent is a time to recall that it is Jesus who is the reason for our hope, the spur to our repentance, the source of our love and the cause of all our joy.

May your Advent be rewarding as your discover more deeply the true "reason for the season."

GOD REST YOU MERRY

Originally the greeting, Merry Christmas, had a deeper, richer meaning. The word merry did not mean joyful; it meant peaceful. So when carolers sang, "God rest ye merry, gentlemen," they meant "God keep you peaceful."

—from Bethel United Church of Christ December Newsletter

THE CHURCH PAGE IS BROUGHT TO YOU THROUGH THE FOLLOWING SPONSORS

Table listing sponsors: GEORGE & MABLE MACOMBER, DAN'S WESTSIDE AUTOMOTIVE, MANCHESTER MEN'S CLUB, WACKER'S GENERAL STORE, Keith's Barber Shop, Pilot Metal Products, Janice & Dave Little, EVELYN ECCLÉS, M. D., MANCHESTER CAR WASH, Manchester Automotive, Drs. Charles Lyon & Michael Brooks, D.O's, ALBERS ORCHARDS, You Owe It To Yourself... To choose a quality retirement. Brooklyn Living Center, 151 Constitution Avenue 592-2828 Canton Retirement Centers Inc., Bendley & Datsko, P.C. Attorneys at Law, MANCHESTER TOOL & DIE, Manchester Plastics, Norm & Olga Walz, S-K Sales, Inc., Manchester Chiropractic Clinic, SPEAR ASSOCIATES REALTORS INC., JENTER - BRAUN FUNERAL HOME, KLEINSCHMIDT True Value Hardware, RENO & NANCY FELDKAMP, HAARER'S MEETING PLACE, THE MANCHESTER ENTERPRISE, MANCHESTER MANOR, Baker's Dozen, GENE & GERTRUDE SMITH PINNACLE ENGINEERING, Manchester Stamping

COMMUNITY NEWS

Tree Lighting Ceremony at the Gazebo

The tradition of an old-fashioned Christmas was apparent as Dick Kuntz led carollers in song at the Gazebo on Sunday evening, December 13. Pastor Nancy Doty read an inspirational message about the relationships we share with others especially during the Christmas season.

Joyce Golightly read the following names for whom the Tree of Lights ceremony is dedicated.

Lights shine in memory of:

Dr. Frederick N. Hanson, George & Matilda Hanson, Webster & Martha Schill, John & Mary Schill, Ronald Ahrens, Jimmie Watson, Anthony Krzyzaniak, Mary Krzyzaniak, George Brooks, Elnora Brooks, Clare E. Arnold, Gladys Miller Folkler, Howard Folkler, Elwood Pniewski, Charles Miller, Wayne O. Hall, Beatrice I. Hall, Albert K. Haller, Albert A. Haller, Wallace Widmayer, Amanda Widmayer, Willis L. Uphaus, all deceased members of Unit 117 American Legion Auxiliary, Blanche Tuckerman, Ray Tuckerman, Mr. & Mrs. Fred Fielder, Mr. & Mrs. Paul Feldkamp, Dr. Henry van der Schalie, Vernie M. Wame, Mary Pellegrino, George Rolfe, Vearl Widmayer, Eric Fillyaw, Harold Dresselhouse, Donald Sutton, William Vincent Emert, Al Simmons, Dorothy Every, Harold Every, Rohn family, Micallef family, John & Gertrude Pratt, Martin Leo Lentz, George Swank, Emma Greca, Genevieve Wallace, Herb Kueffner, Leonard H. Stoddard, Janet Stoddard, Everett Stockwell, Grace Stockwell, Timothy R. Cook, Clara Schulte, Carl Weidmayer, Helen Helber, Dorothy Miller, Bill Schaffer,

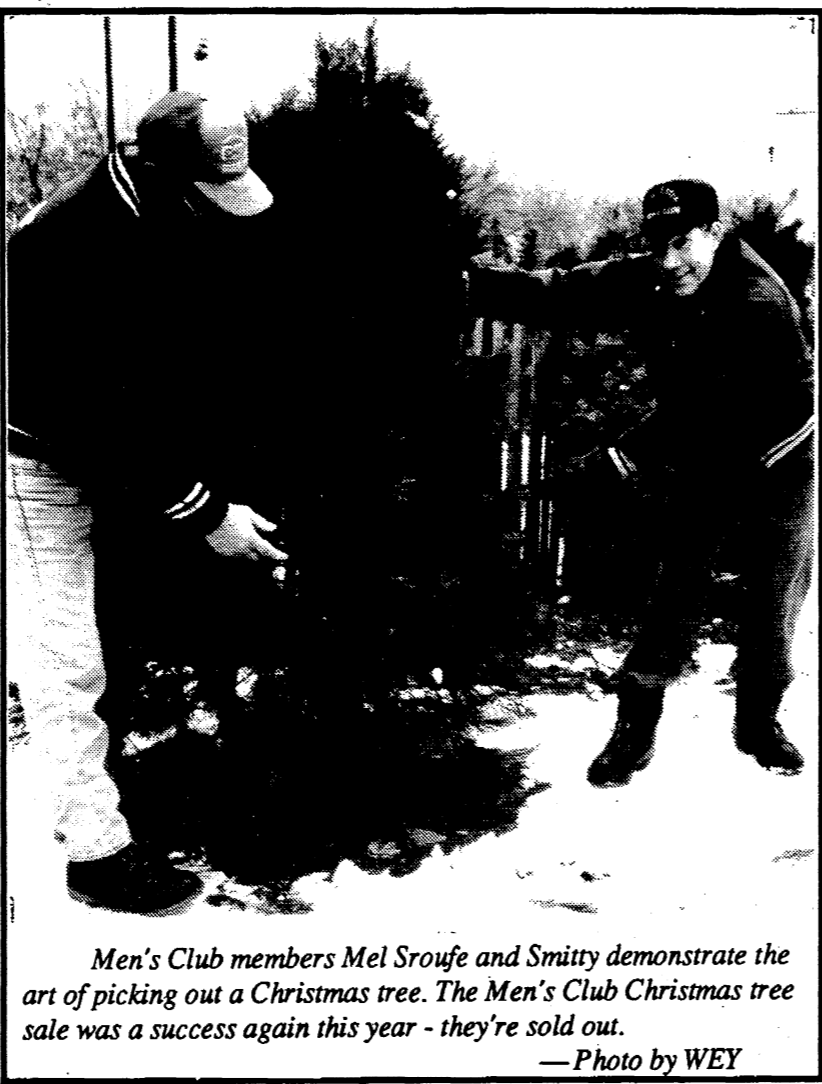
Jack Golightly, Allen Schaffer, Herbert Jacob, Harry Krauss, Alfred (Bud) Detling, Susan Fescoe, John Ray, Barbara Kay Gaddis, Robert J. Popkey, Wm. Bross, Harold Ahrens, Jim Meranuck, Howard Carty, Paul Blumenauer, James Wiethoff, Christine Chilson, Leslie Chilson, Ethel Havens, Delbert Havens, Eugene Havens, Armond Dresch, Charles Scully, Elizabeth Dresch, Harold Dresch Jr., Fred & Edith Kennedy, Clarence & Nina Wahl, Clare Elizabeth Paige, Solomon White, Clarence Schaible, Richard Fink, Roland Guenther, Joan Trinkle, Marilyn Tallman, Margie Blumenauer, Shelly Green, Beverly Bishop, Mr. & Mrs. Alton Gehringer, Roy Gehringer, Edward Van Slambrouck Sr., Merle Cummings, Russell Van Smith, Ernie Wallace, Robert Brown, Mary McGinnis, Ralph Rogers, Martha H. Weinlander, George J. Weinlander, Pamela Sue Smith, Robert Goeddeke, Harry Parsons Sr.

Lights shine in honor of:

Rev. Francis Murray, Cynthia Every, Corwin, Clayton, Ellie Senkewitz, Emanuel Women's Fellowship, Adelaide Scully, Leah Detling, Lynn & Marion Voegeding, Doug & Robin Welshans, Bill & Peg Chizmar, Anne Wright, Mr. & Mrs. Francis Smith, Jeannette Schleede, Ruth Ahrens, Ella Kemmer, Rev. Paul Kuntzman, Mr. & Mrs. Ed Van Slambrouck Jr. & family, Mr. & Mrs. Norm Neidermeier & family, Mrs. Hattie E. Van Slambrouck, Manchester Men's Club, Dennis Gehringer-Navy Operation Hope on the U.S.S. Rang, Eugene & Jean Carpentier, Harry & Margaret Parson.

The lights on the tree will shine continuously through the holiday season into the New Year.

Proceeds from the Interfaith Counseling Service Tree of Lights will be used to subsidize the counseling fee for those who otherwise could not benefit from the opportunity to improve their quality of life.



Men's Club members Mel Sroufe and Smitty demonstrate the art of picking out a Christmas tree. The Men's Club Christmas tree sale was a success again this year - they're sold out.

—Photo by WEY

Give a Christmas gift subscription to the Manchester Enterprise—Just like a letter from home.

MFS Christmas Shop

The Manchester Family Service Christmas Shop for low-income families will be held in Hoffer Hall of the Manchester United Methodist Church, 501 Ann Arbor St., on Friday, December 18, from 9:00 a.m. until 5:00 p.m. This will also be surplus food distribution day.

Set up and packing of bags of food will be on Thursday evening, beginning at 6:30 p.m. If you would like to help, please feel free to come. This will not be a clothing shop, but we welcome jackets, coats and boots in good condition. We would appreciate any toys or games that are in good condition also. Please feel free to drop things off at the church during the week of December 14.

If you have any questions, please feel free to call Joanne Fredal at 428-8010.

Most people don't have any trouble meeting expenses - every time we turn around, there they are.

AGENDA

Manchester Village Council December 21, 1992

- 1. Call meeting to order
2. Pledge of Allegiance to the Flag
3. Minutes of the previous meeting
4. Approval of Agenda
5. Correspondence
6. Public Participation
7. Reports
a. Sheriff's Report
b. Planning Commission - Historic District
c. Solid Waste & Recycling
d. DPW Report
e. Ordinance Committee - Adoption of Ord. #206
f. Parks Commission
g. Finance Committee
h. Village Hall Maintenance
i. Manager's Report
j. Tree Board
8. Old Business
a. Black Sheep Update
b. Day House Update
c. Other
9. New Business
a. Budget Preparation
b. Other
CLOSED SESSION - MANCHESTER GRAVEL, POSSIBLE LITIGATION
10. Adjourn

The UNUSUAL & DISTINCTIVE WILD SWAN Gift & Card Shoppe 107 W. Mich. Ave. • Clinton 456-7517 • Open Tues.-Sun.

*New gas tanks installed \$130 & Up We Turn Rotors & Drums Brakes Exhaust Shocks & Struts Tune ups Front End Alignments Radiators Tires Tie Rod Ends CV Shafts Batteries Transmissions Mon. - Fri. 7 a.m. - 7 p.m. Sat. 8 a.m. - 5 p.m. Closed Sundays BENEDICT'S SERVICE 24 Hour Wrecker Service 327 W. Main St. Manchester, Mi. 428 - 8576

Sincere Thanks Pennington LP GAS Count on us to keep the heat on! 9155 W. Weston Rd. / P.O. Box 37 Morenci, MI 49256 (517) 458-7107 Toll Free (800) 365-5599 13400 M-52 / P.O. Box 490 Stockbridge, MI 49285 (517) 851-7577 Toll Free (800) 274-5599

Sincere Thanks Pennington LP GAS Count on us to keep the heat on! 9155 W. Weston Rd. / P.O. Box 37 Morenci, MI 49256 (517) 458-7107 Toll Free (800) 365-5599 13400 M-52 / P.O. Box 490 Stockbridge, MI 49285 (517) 851-7577 Toll Free (800) 274-5599

COMMUNITY NEWS

Johnson Controls Has Record United Way Year



Johnson Controls, Inc. had a record year in their support for the Manchester United Way. Johnson Controls total contribution to the 1993 Manchester United Way was \$47,237. This total includes contributions of \$6,174 from employees of the Container Division, \$5,953 from employees of the Machinery Division, and employee matching funds from the Johnson Controls Foundation of \$35,110.

Pictured above (left to right) presenting the Johnson Controls Foundation checks are Sandie Bowles, Employee Relations Administrator, Plastic Container Division, Dave Petsch, Industrial Chairman, United Way of Manchester, and Bill Coughlin, Human Resources Manager for the Plastics Machinery Division.

Bethel United Church of Christ established 1840 Come out of the cold into the warmth of Christian Caring. CHRISTMAS EVE Carol-Candlelight Service 7:30 p.m. FAMILY WORSHIP Sunday Morning 9:30 a.m. nursery care CHRISTIAN EDUCATION Sunday School for children 10:45 a.m. Bible Study for adults - Sunday 10:45 a.m. Wednesday 7:30 p.m. Corner Bethel Church and Schneider Roads Freedom Township 428 - 8000

EYECARE Bradley Taylor, O.D. 227 E. Main Street • Manchester • 428-8955 "We care about your eye care!" Comprehensive Eye Exams Quality Eye Wear for All Ages Contact Lenses Including: Disposable, Frequent Replacement, Gas Permeable, Tinted, and Soft Lenses for Astigmatism

FAMILY HISTORY PHOTO ALBUM SHARE YOUR FAMILY HERITAGE PHOTOS COPIED ONTO MODERN PAPER PRESERVE YOUR PRICELESS IMAGES PRINTS OF ALL SIZES COPIED ARCHIVAL PROCESSING AVAILABLE STANDARDIZED B&W PRINTS IN ONE ALBUM FOR YOUR COFFEE TABLE PACKAGE PRICED TO FIT YOUR BUDGET CALL 428 - 0027 OR 428 - 9509

Poinsettias Quality Grown All Colors All Poinsettias Price Reduced Schebors Greenhouse 14345 Logan Rd. Manchester 428 - 8078 Mon-Sun 11-5

Faults are thick when love is thin. Kirk Excavating Sand - Gravel - Fill Dirt Basements - Driveways Licensed & Insured 428-7938 Dave Kirk 14180 Schleweis Road Manchester

Sula Darlene Jeffers ATTORNEY AT LAW 146 E. MAIN STREET P.O. BOX 625 MANCHESTER, MICHIGAN 48158 (313) 428-8190

55 Or Older? We've Reduced The Cost Of Mobile Homeowners Insurance! Here's why! Our statistics show that mobile homeowners 55 and older have fewer and less costly losses than other age groups. So it's only fair to charge you less for your mobile homeowners insurance.

Collision Repair - Inside and Out! Just one phone call is all it takes to have your car towed, repaired by our expert mechanics, and fully restored and painted by our auto body specialists. Plus we handle your insurance claims, guarantee all work, and can even provide you with a rental car. Accidents happen. Count on us to make them less trouble for you. 428 - 8343 MIDWEST FORD Auto Repair Service 510 W. Main Manchester

Sutton Agency, Inc. CONNIE WIDMAYER, AGENT 136 East Main Street Manchester, Michigan Phone 313-428-9737 Auto-Owners Insurance Life Home Car Business The No Problem People

LOCAL GOVERNMENT

**PUBLICATION SUMMARY
OF BRIDGEWATER TOWNSHIP ORDINANCE
NUMBER 20
REGULATION AND LICENSING OF MINERAL
EXTRACTION OPERATIONS**

The following is a Summary to be published pursuant to MCLA 41.184 of the Regulation and Licensing of Mineral Extraction Operations Ordinance as adopted by the Bridgewater Township Board. A True Copy of the Ordinance can be inspected or obtained from the Bridgewater Township Clerk, Karen Weidmayer, at the Township Clerk's Office, 13360 E. Austin Road, Manchester, Michigan 48158, Telephone (313)428-8641.

1. Findings

The Township has authority to regulate mineral extraction operations to protect the public health, safety and welfare; and a Mineral License Board is established to further those purposes.

2. License Required

A Mineral Extraction License is required for removal or processing of sand, gravel, soil, or other minerals.

3. Compliance With License

No licensee shall engage in activity contrary to the terms of the Ordinance or the License.

4. License Application

A license shall only be issued pursuant to an original signed application containing detailed drawings, a restoration plan, a hydrogeological analysis, and other specific attachments as further described in the Ordinance.

5. Review Of Application By Mineral License Board

The Mineral License Board shall approve or deny the license application within 60 days following the specified standards of the Ordinance.

6. Issuance Of License

If a license is approved the Mineral License Board shall issue it.

7. Form Of License

The license shall contain a full description of the operation and the restored site and include signed commitments for compliance, and other specified attachments.

8. Compliance By Licensee

The licensee must operate only between the specified hours and comply with the specific conditions of the Ordinance which include provisions for fencing, setbacks, treatment for dust, and other conditions as further specified in the Ordinance.

9. Reclamation

Progressive reclamation must be followed to restore the areas after excavation following the standards as further specified in the Ordinance.

10. Revocation/Suspension

The license may be revoked or suspended where the licensee is operating in violation of the terms of the license, or this Ordinance.

11. Appeal

Any applicant or affected property owner may appeal a decision of the Mineral License Board to the Township Board.

12. Exemptions

This Ordinance does not apply to certain specified grading for the growing of crops or for construction of buildings or structures, or removal of less than 100 cubic yards per calendar year.

13. Violations

Persons violating this Ordinance may be fined \$500 and imprisoned for 90 days for each violation. Each day an operation is carried on in violation of the Ordinance shall be considered a separate violation. A civil action to enjoin the operation may also be commenced.

14. Effective Date

This Ordinance shall take effect on February 1, 1993; except for extraction operations existing prior to that date in which case application for the license must be by February 1, 1993 and compliance with all provisions of the Ordinance by May 1, 1993.

15. Severability

If any portion of the Ordinance is found to be invalid, the remainder of the Ordinance remains in effect.

16. Relationship To Other Laws

Whenever any other laws or regulations are also imposed, whichever has the higher standards or requirements shall govern.

17. Adoption

This Ordinance was adopted by resolution of the Bridgewater Township Board at a meeting held on December 10, 1992.

This Summary was prepared for publication by James R. Datsko, Bridgewater Township Attorney.

**Sharon Township
Proposed Synopsis
Regular Board
Meeting**

December 3, 1992

The meeting was called to order at 8:00 p.m. by Supervisor Savage. All Board members present along with the Zoning Officer, Planning Chairman, and Board of Appeals Chairperson. Manchester Library Board representatives were present along with several township residents.

Minutes for November 5, 1992 regular meeting were approved. Treasurer's report was approved. Total of all Township assets on December 3, 1992 was \$76,292.57.

The Manchester Township Library representatives present were introduced by Mrs. Swaney. She then presented a possible contract to the Township Board for future financial support. After a lengthy discussion there was a motion, supported and carried, to table this contract until the January meeting to enable the Library Board to contact other area townships and make possible changes agreeable to all units.

Trustee Blumenauer reported gravel trains still using Parr Road as an access to M-52 from Manchester Gravel Pit. Washtenaw County Road Commission hopes area townships will join them and Manchester Village in any future litigation concerning Manchester Gravel.

Zoning Officer Blades reported two Land Use Permits issued during November.

Planning Commission Chairman Ward stated the Commission approved land splits for Sullivan, Neihaus and Towsley properties. Because of easements, it is necessary

these splits be approved by the Township Board. Motion made, supported and carried, to this effect.

Mr. Ward presented the board with a good supply of copies of Sharon Township Land Use Policy Plan. These are available to the general public. Motion made, supported and carried, to charge \$12 per copy to pay for printing costs. The Private Road Ordinance is still being worked on by the Planning Commission.

Board of Appeals Chairperson, Jan Imonti, reported a Board of Appeals work session regarding the variance for transit mix operation at Farmer Bros. Gravel Pit will be held Wednesday, December 9 at 7:30 p.m. at the townhall.

Recycling update: Three (3) more residents have obtained free bags for recycling - making

a total of 112 to date.

There is still a possibility of a State Police sub-station in Manchester.

Report from Supervisor that there is a chance property tax reform could be enacted by the State Legislature. Residential assessments will perhaps rise 15% on December 31, 1992 unless some legislation is passed.

Outstanding bills presented. Motion made, supported and carried, all be paid.

Various other discussion and correspondence not needing Board action was considered.

Being no further business, the meeting was adjourned by the Supervisor at 10:30 p.m.

Submitted by Duane Haselschwerdt, Clerk

Approved by John A. Savage, Supervisor

**Special Meeting
Freedom Township Planning Commission
Wednesday, December 30, 1992 8:00 P.M.**

The Planning Commission will meet to consider a rezoning request for a 20 acre and a 65 acre parcel on Esch Road. Salley Kelly, of 6617 Esch Rd., is requesting that the property classification be changed from General Agriculture (A-1) to Recreation-Conservation (R-C). For additional information, the public may contact the Commission secretary at 313-428-8222.

The special meeting will be held at the Freedom Township Hall, Pleasant Lake Road.

Secretary, Bob Miller

STEIN ELECTRIC COMPANY, INC.

- Licensed & Insured Contractor •
- 24 Hour Emergency Service •
- Ag. • Commercial • Industrial • Institutional • Residential
- Motor Controls & Lighting

(313) 428-9050

Rick Graustein

**CHRISTMAS EVE
1992 LUMINARIA**

Get supplies at the Blacksmith Shop
on East Main Street

Monday, December 21st 3pm - 7pm

Tuesday, December 22nd 3pm - 7pm

Wednesday, December 23rd 3pm - 7pm

Or By Appointment Late Shoppers Call 428 - 8234

SAND, CANDLES, BAGS & INSTRUCTIONS
\$3 Minimum per Household

125th Commemorative Plates & 1993 Historical Society

Calendars will be available for purchase

@ the Blacksmith Shop Also



Flags make Great Holiday Gifts

• State of Michigan
• Foreign • U of M
• EMU • MSU
flags and more!

FOX TENT AWNING CO.

617 S. ASHELY • ANN ARBOR • (313) 665-9126



Pictured above: Annie Hinkley, of Klager Elementary School, won Honorable Mention for her 1992 Michigan Thanksgiving Parade Balloon Design, "The Moose."

School Lunch Menu

Christmas Break December 21 — January 1
School resumes January 4, 1993

REAP THE SAVINGS!!

GM AUCTION CARS

1992 Chev Lumina 4 Dr. 11,000 miles.....\$12,900	1992 Olds Delta Royal 11,200 miles.....\$16,900
1992 Buick Skylark 4 dr. 6300 miles.....\$13,900	1992 Olds Delta 88 LS 12,300 miles.....\$17,900
1992 Olds Toronado 9,900 miles.....\$19,900	1992 Chev. Beretta GT 8,600 miles.....\$12,900
1992 Geo Storm Hatchback 14,700 mi.....\$8,995	1992 Buick Century 4 dr. 12,900 mi.....\$12,500
1992 Buick LaSabre 4 dr. 6200 mi.....\$17,900	

QUALITY USED CARS & TRUCKS

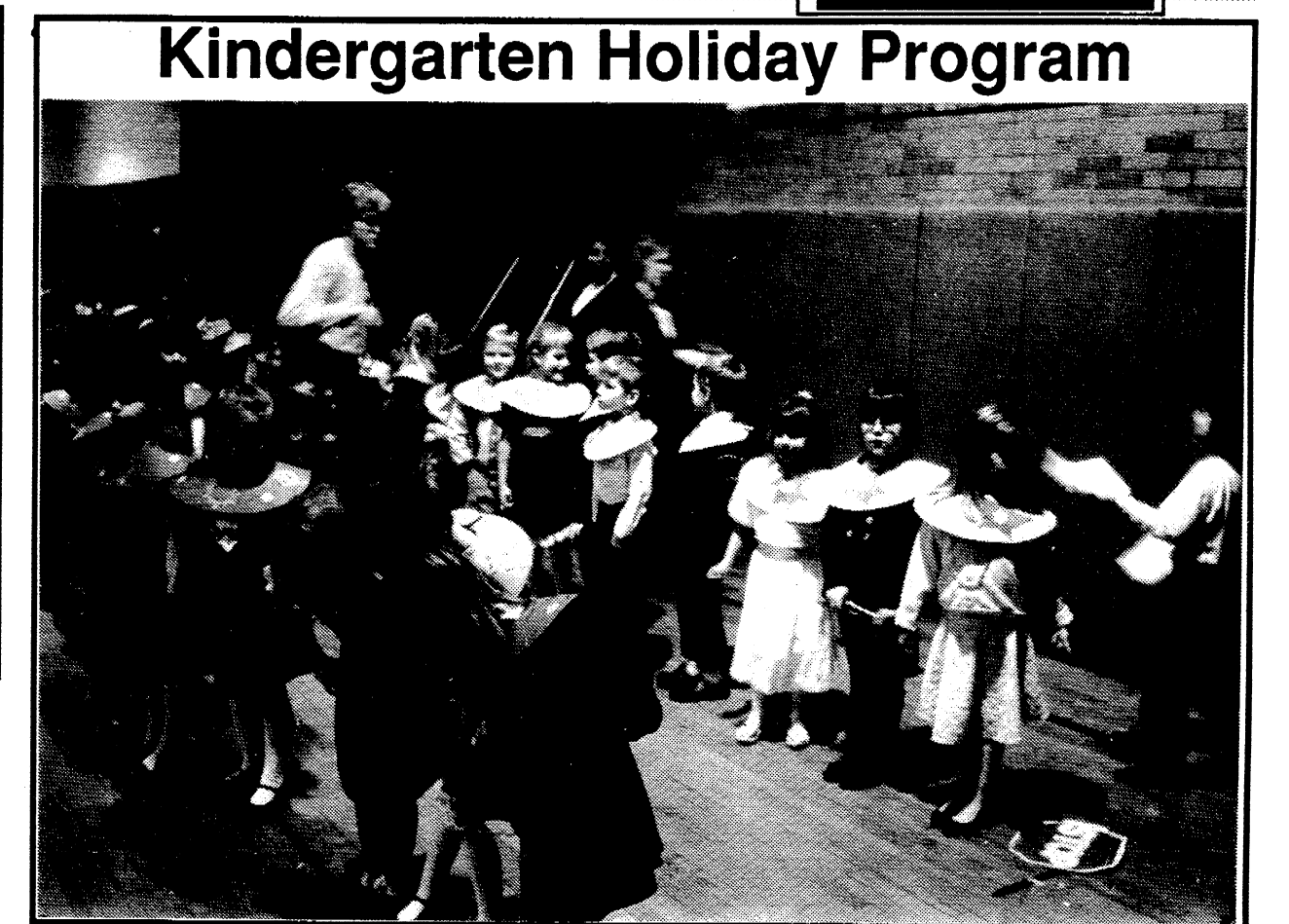
1993 Chev S-10 Pick-up 200 miles.....\$10,900	1988 Chev Caprice 4 Dr.....\$6,995
1992 Buick LaSabre Limited 1500 miles.....\$19,900	1988 Chev. Celebrity 4 Dr. Was \$4995.....\$3,995
1992 Olds 98 Touring Sedan.....\$17,900	1988 Chev Cavalier\$5,295
1991 Chev Cavalier 4 dr.....\$7,495	1988 GMC Safari Van.....\$7,995
1991 Chev K Blazer\$15,900	1988 Ford 1/2 Ton 4X4.....\$8,995
1991 Plymouth Voyager\$11,900	1988 Chev Suburban\$10,900
1990 Chev 3/4 ton Pick-up.....\$9,995	1987 Chev Cavalier R.S. 2 Dr. Was \$4495.....\$3,495
1990 Chev Lumina 4 dr.....\$6,995	1986 Olds Cutlass Calais 2 dr.....\$2,495
1990 Olds Calais 4 dr.....\$6,995	1986 Buick Somerset 2 dr.....\$4,995
1990 Olds Cutlass Supreme\$7,995	1986 Chev Nova 4 dr.....\$2,995
1989 Buick Limited 4 dr.....\$9,495	1986 Pontiac 6000 STE 4 dr.....\$5,495
1989 Dodge Daytona 2 dr.....\$6,995	1986 Olds Toronado 2 dr.....\$5,995
1988 Buick LaSabre 4 dr.....\$7,995	1985 Dodge Aries Sta Wagon\$2,195
1988 Chevrolet Caprice 4 dr.....\$4,995	

CALL Dave, John, or Fred
FAIST - MORROW

"Where the QUALITY Used Cars Are."

1500 S. Main St. Chelsea
OPEN TILL 8:00pm
MON & THURS
OPEN SAT 9-3

475-8663



**Manchester
Community Schools
Board of Education
Regular Meeting
December 21, 1992**

AGENDA

1. Call to Order
2. Pledge of Allegiance
3. Roll Call of Officers
4. Secretary's Report
 - A. Minutes of Previous Meetings
 - 1. Regular Meeting - November 16, 1992
 - 5. Treasurer's Report
 - 6. Communication
 - A. Correspondence
 - B. Visitor Input
 - 7. Old Business
 - 8. New Business
 - A. Personnel Items
 - 1. employee recognition
 - 2. resignation - coach
 - 3. notification of superintendent's renewal clause
 - B. High School Band Trip
 - C. Fall Athletic Report
 - D. District Goals
 - 9. Recess
 - General Session
 - 10. Call to Order
 - 11. Discussion Item
 - A. Facility Development Project
 - B. Update Volunteer Progra
 - 12. Other Business
 - 13. Closed Session
 - 14. Adjournment

Pictured above: Children from Klager Elementary getting ready for their Christmas program, "Through A Child's Eyes" directed by Mrs. Kay Miller.

The children from Mrs. Super's A.M. class performed finger plays, songs and poems to "Chubby Little Snowman", "Ring Those Bells" and "Sleigh Bells"; Mrs. Super's P.M. class read the "Christmas" poem and sang "Tickery Tickery Tock" and "Sliding"; Mrs. Hankamp's A.M. class sang "When Santa Comes", "12 Days of Christmas" and "3 Little Christmas Trees"; Mrs. Hankamp's P.M. class recited the poem "Magic Time" and sang "Angel Band" and "Christmas Cookies".

PREMIER CONTRACTING INC.

Full Service Residential Building & Remodeling
"Let us help you with your building plans"

Lots Currently Available

Ron Milkey
(313) 428-9826

The current MANCHESTER ELECTRIC customer list is at 970 customers. Make it 1000 yet this year & receive a special gift!

CALL US!!
428 - 8243
428 - 8331

MANCHESTER ELECTRIC
200 Riverside Drive, Manchester, MI.

OPEN HOUSE

JON'S PHOTO AND MANCHESTER LABS

DEC. 17-18-19th

COME SEE US!

MasterCard
VISA

SPORTS



#20 - Brandon Woods. — Photo by Jon

Varsity Roundballers Remain Unbeaten

—by Jon

The 1992-93 basketball season kicked off last week on the road as we met Clinton and Onsted. I was very impressed with our players aggressive offensive moves along with our team speed.

First up we travelled to Clinton on Tuesday. Games against the Redskins are always rough and tough no matter what the sport. This time head coach Jim Krzyzaniak and the Flying Dutchmen beat the skins 55-53 for the first time in six years. We just plugging away and finally led by 12 midway through the final period. Clinton got hot in the final minutes to pull close but we held them at bay. Rob Davis was our high scorer with 24 points of which 17 were in the second half. Tom Fielder had nine points.

The Little Dutch fell in the last couple of minutes, 34-39.

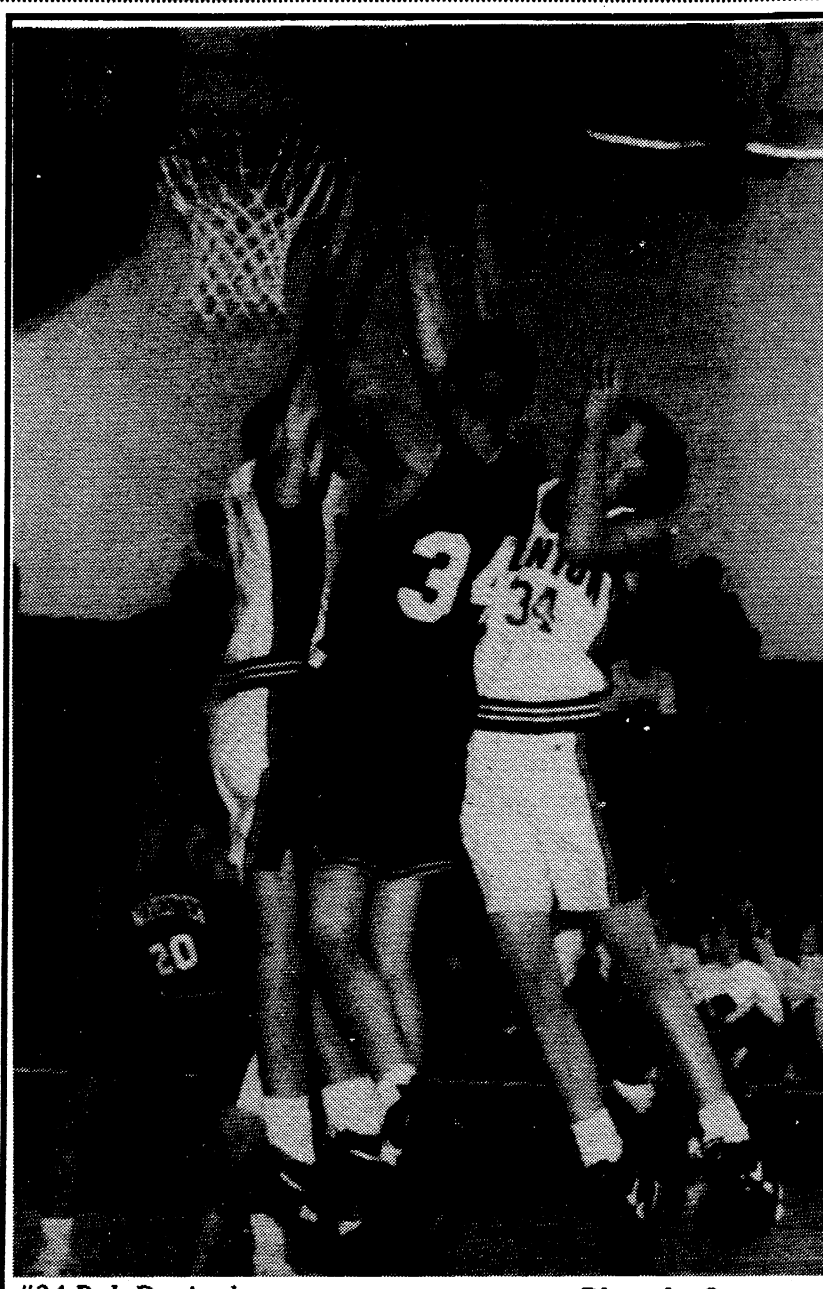
On Friday we bussed to the home of the Onsted Wildcats and led from start to finish. We held them scoreless throughout the third period to enter the final stanza up 15 points and when the game ended we sat atop 57-50.

Rodney Burkhardt was the game's high scorer with 16 points. Rob Davis and Tom Fielder added 23 points, 12 and 11 respectively.

Our Little Dutch broke into the win column with a 69-67 victory.

The gym will be hopping Friday night as we open our league campaign at home against Napoleon. The Pirates have been picked as the team to beat.

Subscribe to The Enterprise — Keep up on what's happening in your town.



#34 Rob Davis shoots. — Photo by Jon

Township of Manchester 275 S. Macomb, P.O. Box 418 Holiday Tax Collection Hours

Wednesday	December 23	9-5
Thursday	December 24	Closed
Friday	December 25	Closed
Monday	December 28	9-noon
Tuesday	December 29	9-noon
Wednesday	December 30	9-noon
Thursday	December 31	9-noon

For your convenience, Great Lakes Bancorp, Manchester Branch will also accept tax payments during their regular business hours.

STATE OF MICHIGAN PROBATE COURT COUNTY OF WASHTENAW CLAIMS NOTICE Independent Probate FILE NO. 92-100496-1E

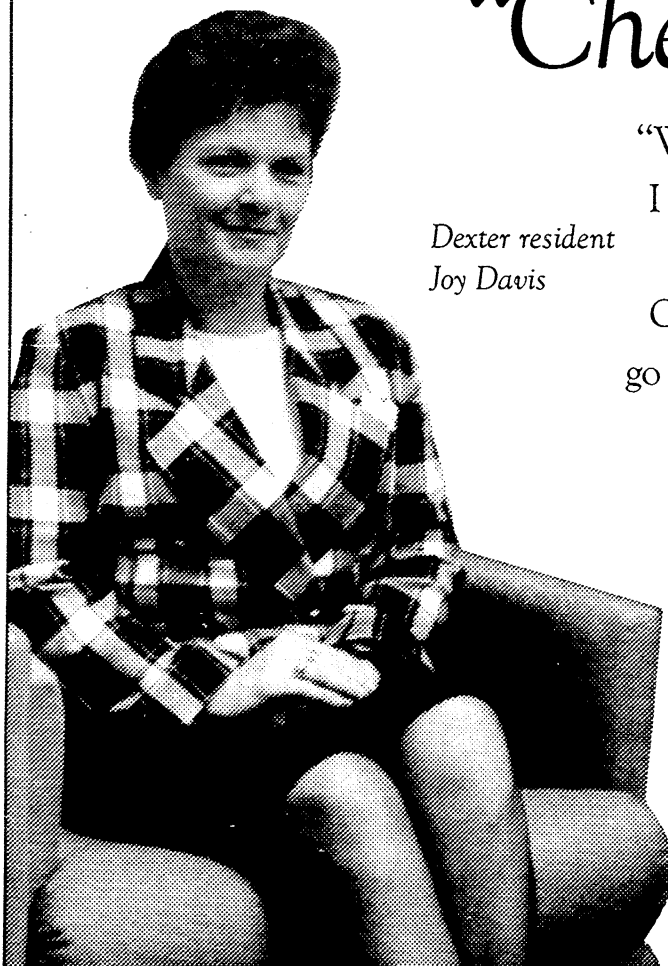
Estate Of PATRICIA A. BALDWIN, DECEASED Social Security No. 379-30-9751 TO ALL INTERESTED PERSONS:

Your interest in the estate may be barred or affected by the following: The decedent, whose last known address was 1023 Freer Road, Chelsea, Michigan 48118 died 11/25/92.

Creditors of the deceased are notified that all claims against the estate will be forever barred unless presented to the independent personal representative, EVANGELINE T. MOHRLOCK, 144 Woodland Drive, Mid-Florida Lakes, Leesburg, Florida 34788, or to both the independent personal representative and the Washtenaw County Probate Court, P.O. Box 8645, Ann Arbor, Michigan 48107 within 4 months of the date of publication of this notice.

Notice is further given that the estate will be thereafter assigned and distributed to the persons entitled to it.

KEUSCH AND FLINTOFT, P.C. Attorneys for the Estate BY: John P. Keusch P-15927 Address 119 South Main Street, P.O. Box 187, Chelsea, Michigan 48118 313/475-8671



Dexter resident Joy Davis

“Chelsea is my hospital.”

“When I went into the hospital on short notice for surgery, I thought it would mean missing my daughter's wedding ... and she was ready to postpone it. But the staff at Chelsea Community Hospital had a better idea. I couldn't go to the wedding, so they brought the wedding to me, right in the hospital chapel. I'll never forget the extra effort ... and the care was excellent. If I ever need to go to the hospital again, my hospital will be Chelsea.”

For information on any hospital service, call 313/475-1311. For help finding a physician, call 313/475-4050.



The hospital for our community

The Charles Reinhart Co. Realtors DEBORAH ENGELBERT Sales Associate

2452 East Stadium Blvd. Off: 971 - 6070 Ann Arbor Res: 475 - 8303

Shop Downtown Chelsea Open Evenings

Quality * Service * Products * Selections

SPORTS

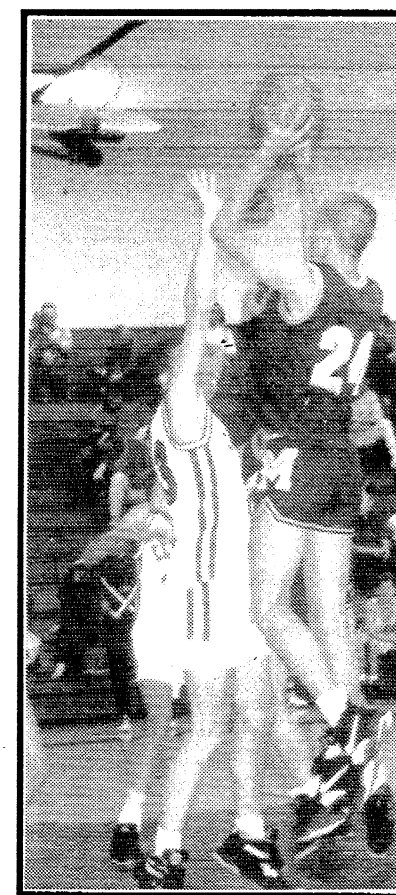
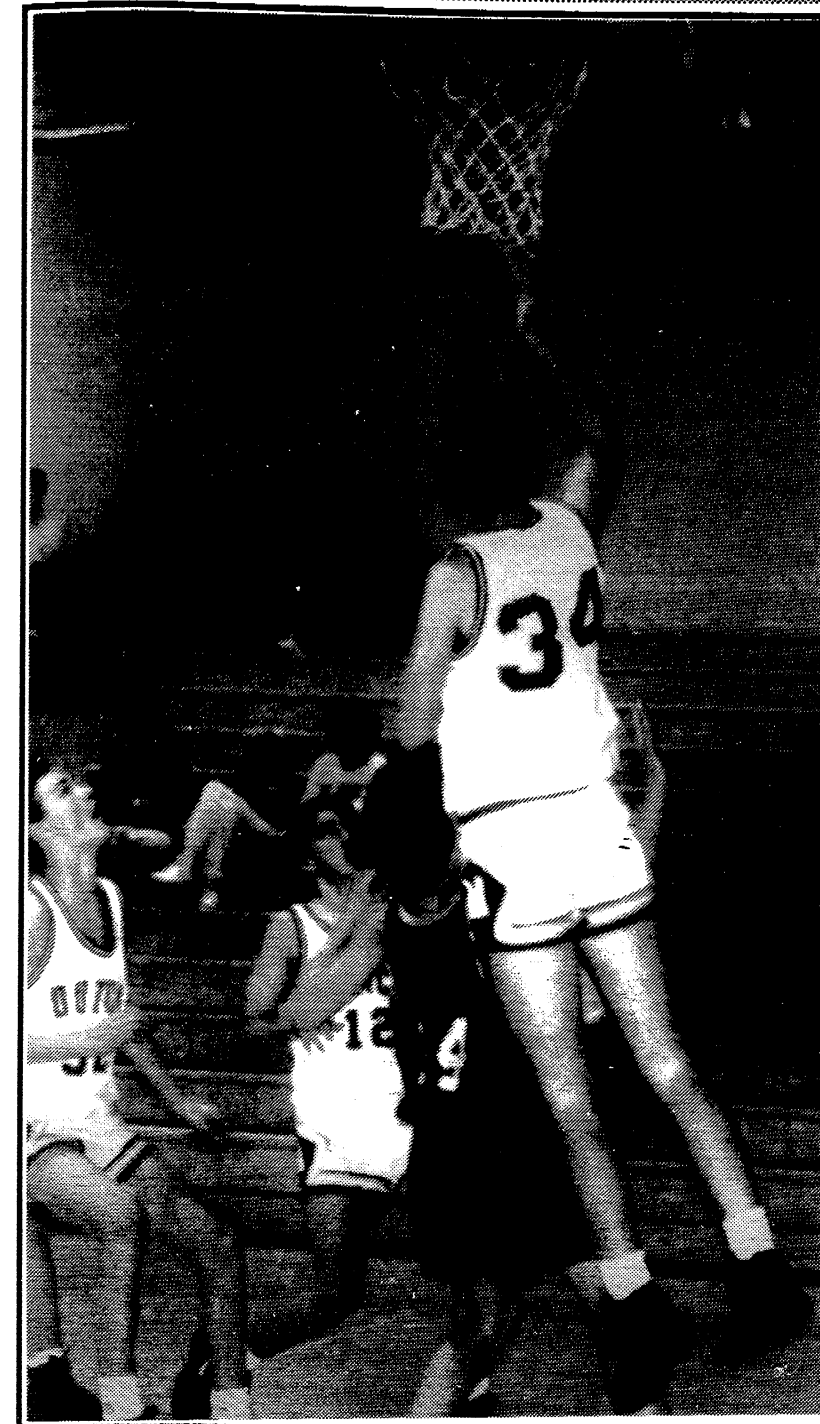
Freshman Basketball Begins

—by Jon

On Monday, December 7, our ninth graders hosted Adrian Madison and beat them soundly, 63-15.

We have a solid squad of tall and fast players who were impressive to watch. The young men who make up this team under the leadership of head coach Jeff Etzel are: Chad LaRue, Trevor Schleicher, Cris Beckington, Matt Herman, Mark Harris, Jason Beckington, Marcus McNamara, Joe Hollosy, Luke Hugel, Jason Barnes, Aaron Garrett, Luke Page, Grant Ross, Jason Mann, and Andy Cohn. Thursday we visited the home of the Addison Panthers and lost a close game, 48-49.

Be with us Thursday, December 17, as we host Napoleon. Game time: 7:00.



Varsity Volleyball Action

—by Jon

This year's season really gets going beginning in January of 1993, but our girls have been hard at work preparing for Saturday's AllenPark invitational. First year head coach Barbara Stein, along with assistant Wendy Towne, have a strong group of seniors and juniors who may create havoc around the league. They are: seniors Sandra Wiitala, Sharon Fielder, Julie Morgan, and Olivia Delongchamp; and junior Sarah Riske.

Character is much easier kept than recovered.

—Thomas Paine

New Year's Eve Party '93

We supply: Ice, Cups, Plates and Glasses

Bring your own: Drinks & Mix Appetizer to Pass

Music by: D. J. Service To be Announced

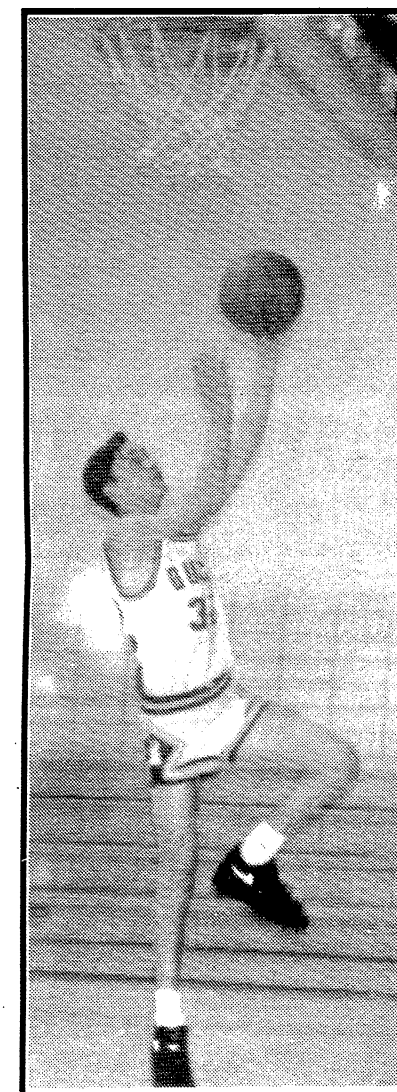
Sponsored By: Manchester Men's Club

9:00 until ????

at the Manchester K of C Hall

\$7.50

Tickets @ Krauss', Keith's or Dave Kemner



The lovebird is really a parrot.

Bring This Ad And save 10% On Any IN STOCK FARM or CONSTRUCTION TOYS K & W Equipment., Inc.

Hours: M - F, 8 to 5 Manchester, MI (Since 1947 on M-52)

Phone: 313-428-7666

BACK DOOR PARTY STORE

500 Ann Arbor Street Phone 313-428-9287 Manchester, Michigan

BEER WINE KEG BEER GROCERIES

MICHIGAN LOTO

Instant and Daily Lottery Tickets UNION 76 GAS Self Serve

STORE HOURS Monday - Thursday 6 a.m. - 9:30 p.m. Friday & Saturday - 6 a.m. - 10 p.m. Sunday - 7 a.m. - 9 p.m.

SUZANNE'S Interiors & Gifts

Open Lower Level of the Mill Tues. - Sat. 10 - 5 Sun 12 - 5 428 - 0228

Downfilled Comforters - Featherbeds 1/2 OFF Handbags while they last Come Down to Visit

WESTSIDE AUTOMOTIVE

660 W. Main Manchester, Michigan 313/ 428 - 9455

We have had the pleasure of serving the Manchester community for nine years. In that time, dealerships, garages and gas stations have come and gone. Our commitment to service the continuing education of our staff have allowed us to serve the people of Manchester. We plan to continue this service for many years to come. To thank the community for their continued support, we'd like to offer a Christmas Special.

FT. END ALIGNMENT on most cars and light trucks \$29.95

4 WHEEL ALIGNMENT \$39.95 *Does not include installation of shims or cam kits if necessary

Free Computer Diagnosis of Engine Problem; Stalling - Poor gas mileage

All of our Customers are invited to our Annual Christmas open house - Tuesday December 29th starting at 1:00 PM

Kleinschmidt True Value

Housewares

Hunting & Fishing Licences

Keys Made

Lawn & Garden Supplies

Pipe Cutting & Threading

Sporting Goods

19870 Sharon Valley Road (Near the corner of M-52)

M-F 7am - 6pm Sat 8am - 5pm Sun 10am - 4pm 428-8337

CLASSIFIEDS

SERVICES

Michigan Peat Sales: Black dirt for sale \$12 a yard delivered. Fast delivery. 428-9664 tfn

Lost or Found a Pet? Call the Huron Valley Humane Society. 662-5585. tfn

Fielder Painting: Interior and exterior. Free estimates. Senior citizen discount. Phone 428-8506 tfn

Available for Wedding receptions, parties, meetings. Hall rental \$175, \$40 cleaning. Catering available. For further information, call 428-8393 or 428-7637. tfn

Black Dirt For Sale: By the pickup load or delivered. Dozer and backhoe work also available. 428-9265. tfn

Village Hair Forum in the Mill. Full service salon with tanning beds. 428-7684. tfn

Excavating: Sand, gravel, backhoe and bulldozing. Reasonable rates. 428-9265 tfn

Benedict Painting: Call Chuck for free estimates. 15 years experience — interior & exterior painting. 517-536-4812. tfn

Margie's Upholstery: Still serving Manchester. 517-536-4230 tfn

Piano Tuning and Repair: Qualified technician with 15 years experience. Ronald Harris. 475-7134 tfn

Wallpaper hanging/striping: Trim painting and "lite" carpentry. Decorating consultations. Many styles of wallpaper to choose from. Coordinating fabrics. In-home shopping. Call "My Sister's House" for free measuring and consulting. Juli Troz 428-7117 tfn

Professional Painting: 313-429-3880. Interior. Exterior. Commercial. Residential. Drywall. Plaster Repair. "Woodstain Specialist." "Deck Refinishing." "Powerwashing." Licensed. Insured. 12/17/p

Attention AARP Members: 12% Discount on Auto Insurance. Sutton Agency, Inc. 428-9737. eoe

Farmers' Sand and Gravel. We deliver and spread driveways. 475-8850. 12/17

CHILD CARE

New Lower Rates Fall enrollments being accepted in Toddler, Preschool and Child Care programs for children 1-8 years. Choice of morning, afternoon or full-day programs. Contact Little Dutch Child Care Center at 428-8988. tfn

FOR RENT

Three Bedroom Executive Ranch for rent. 313-428-9150. Leave message. tfn

Country Setting in the Village: X-tra large two-bedroom, \$570, with new carpeting and verticals, washer/dryer. No pets. Hibbard Street. 428-9570. tfn

Apartment for Rent: One bedroom w/sofa-bed in living room. One block from downtown. Landlord pays sewer & water. \$400/month plus \$400 deposit. No pets. Call 428-8800, or 428-7882 after 6pm. tfn

Manchester Apartments is now accepting applications for very low, low and moderate income. Rent starting at \$297. Call 428-9270. An Equal Housing Opportunity. 12/31

For Rent continued

Country Home in Manchester Twp: 2-3 bedroom, big kitchen. \$675/month. Call Kathleen at Century 21. 517-536-8616. 12/17

Two Bedrom Apartment in Village: \$375/month. You pay utilities. 313-428-9150, leave message. tfn

Apartment For Rent in Clinton: One bedroom at \$400 / month. 2-bedroom at \$600/month. Excellent condition. Call Rick at 428-8701. tfn

Two-Bedroom Apartment on Pleasant Lake: Hardwood floors, washer/dryer. \$425 plus security. Aura Inn 428-7993. tfn

HELP WANTED

Interior Decorators and Designers Wanted: 428-5000, ask for Victoria. p

Pet Sitter Needed: Reliable animal lover needed to let dogs out each day, play with them, about two hours a day, approximately 11am-1pm, M-F. In the Village. Fee negotiable. Call 428-8409. 12/24/p

Baseball/Softball Coordinator needed for Manchester Summer Recreation Program. High School diploma; good organizational skills; ability to communicate/work well with children and adults; experience in coordinating and developing activities; supply/inventory skills; vehicle in which equipment can be transported. Apply to Manchester Summer Recreation, c/o Superintendent's Office, Manchester Community Schools, 710 East Main Street, Manchester, MI 48158. Deadline for applying is Monday, January 4, 1993. 12/24

MISC. FOR SALE

McCullough Chain Saws, service and parts. Bars, chains and some parts for other brands. Earl R. Alber, 639 W. Main, 313-428-8707. tfn

Feldkamp's Christmas Trees: Starting Nov. 27th. U-cut or we cut. Also wreaths. Friday & Saturdays 9-5, Sundays 1-5. Other days by appointment. 428-8571. Reno & Nancy Feldkamp. 1-1/2 miles west of Wacker's on Pleasant Lake Road, then 1/2 mile north on Smyth Road. 12/17/p

For Sale: Wood-burning, add-on furnace. Includes pipe & firebrick. \$100. Phone 428-8173, ask for Kathy, or 428-8005 eves.

Buffalo Bill Commemorative 30-30 rifle. Hex barrel and case \$225. 428-7874. p

PEIS

Black Miniature Schnauzer: Male, 8 weeks old. Has had first shots. 428-8446. 12/17

VEHICLES

1976 Chevy S-10 Blazer 4x4. \$3,500. 313-428-8898. p

ANTIQUES

Manchester Antique Mall: 35 Dealers. Open 7 days 10-5. 116 E. Main. 428-9357 tfn

Antique Jewelry: Great Christmas gifts — a delicate, lacy gold pendant with small diamonds \$75; 14k gold ring with small pearls and diamonds \$60; gold plated bracelet dated 1905-340. Phone 428-8173 days or 428-8005 evenings.

ANNOUNCEMENTS

Parents of High School Students: Are you concerned about low and/or failing grades. Are you getting reports but little help? How about organizing a parent group to see if there is something we can do? Write Parents, c/o P.O. Box 37, Manchester, MI 48158. 12/17/p

HORSES, FEED, EQUIPMENT

Ponies and Horses Registered P.O.A. pony mare: Safe, sound, no vices. Shown by my 9-year-old. Dressage saddle & lessons included \$550. 3/4 Welsh gelding: 3-years-old, started under saddle. Sweet attitude. Will include 30 days training. \$750.

Registered Quarter horse: Aged black gelding. Used as lesson horse. Very safe, healthy. \$1,000. Centerline Farm 428-9305

Hay and Straw: \$1/bale. 517-456-7318/ 12/24/p

Buying All Types of Horses and Ponies: References available. 313-437-2857. 2/4/p

CARDS OF THANKS

I would like to thank all the snowstorm assisting in so many ways. Even though the phones were out and some vehicles couldn't get very close, the response to the accident seemed immediate. I especially want to thank Eddie, his girlfriend, and Mike Rossette for working so hard to get a door open and lift me from my van. You are appreciated each and every one. Much thanks, Jan and critters especially

I would like to thank my friends and family for the cards and prayers while I was in the hospital. Lawrence Bowers

The Manchester Optimist Club wishes to thank the following area merchants for helping to make our annual Children's Christmas Party another tremendous success: Krauss Pharmacy, Village Gifts, Kleinschmidt Hardware, Pyramid Office Supply, The Flower Garden, Raisin Valley General Store, Jon's Photo Shop, Woodbrook Enterprises, Marti's Salon, The 18th Century Shoppe, Surprise Surprise, Cobblestone Rose, Raisin Valley Antiques, April Victoria and Frank's Pizza.

The Manchester Enterprise has an opening for an ad person. Knowledge of Macintosh necessary. Phone 428-8173

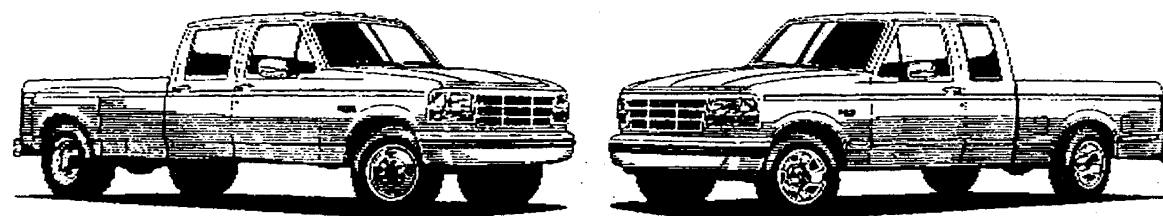
CLASSIFIED RATE: \$3 for the first 20 words, 10¢ for each additional word (a number counts as a word, e.g. seven digit phone number = seven words). Ads must be pre-paid unless prior arrangements are made with our accounting department. AD DEADLINE IS 3:00 MONDAY. Phone 428-8173

Classifieds that are billed (other than tfs) will include a \$2 billing charge. Please note that Classifieds must be paid for before date of publication.

We now have our mail slot installed in the front door of The Enterprise. If you use the mail slot to submit articles or ads, please remember to include your name and phone number in case we have to contact you. Thank you.

HUNTING FOR A BARGAIN? SEE MIDWEST FORD IN MANCHESTER!

WE'RE YOUR TRUCK HEADQUARTERS



THE TRUCK EXPERTS

Largest Inventory of F250's & F350's In The Area! Call Us For All Your Truck Needs

- USED VEHICLES: 1986 OLDS CUSTOM CRUISER-- Wagon, Loaded, Sharp.....\$5,000; 1991 FORD TARUS GL--- Full Power, Low Miles, Hurry.....\$9,995; 1989 LINCOLN CONTINENTAL SIGNATURE--35,000 Miles \$12,995; 1991 MERCURY TRACER--4 Door, Great Looker, Good Mileage.....\$6,500; 1987 F150 --- 302, V-8, Auto, 55,000 Miles, Sharp.....\$6,495; 1991 THUNDERBIRD COUPE -- Air, Stereo, Full Power.....\$9,995; 1989 BRONCO XLT --- 4 X 4, 302, V-8 Loaded, Red & White.....\$9,495; 1988 F250 XLT--- 4X4, Snow Plow, Like New, High Miles.....\$8,995

- PROGRAM SPECIALS: 1992 TEMPO GL \$7995 (15 to choose from); 1992 MUSTANG LX \$8995 (ONLY); 1992 CLUB WAGON XLT \$14,995 (15 Passenger); 1991 CONTINENTAL Signature \$15,995 (Loaded, Low Miles Hurry!); 1992 TAURUS GL \$11,995 (NO STOCK); 1992 THUNDERBIRD \$11,995 (NO STOCK)

MIDWEST FORD 510 W. Main St., Manchester 313-428-8343. Quality Care. It may be your car, but it's still our baby.

Christmas trees: They're pretty, also dangerous

Christmas trees bring a special warmth to the Yuletide season with their soft, colorful lights, decorations and tinsel. They also pose a potential fire hazard.

"Holiday Fire Prevention Tips"—a brochure prepared by AAA Michigan—spells out some simple fire precautions that should be taken to help ensure a safe and happy holiday season.

Last year, 14 Christmas tree fires were reported statewide resulting in property loss of nearly \$210,000. There were no fatalities. This represented considerable improvement over 1990 when 29 reported fires cost seven lives in one house fire and \$368,600 in property damage.

Among precautions suggested by AAA Michigan: • When you get your tree home, make a fresh cut in the trunk and keep plenty of water in the tree stand at all times.

• Check light strands for open sockets and cracked or frayed cords. If any of these conditions exist, replace the lights.

• Do not overload electrical outlets with too many lights or extension cords and be sure that all decorative lighting is turned off whenever leaving home.

• Check tree needles to make sure they are not dry and brittle. If they are, or if needles are falling, remove the tree from the home.

The "Holiday Tips" brochure is available free to the public at AAA Michigan

branches statewide.

Also available are the "Great Pretenders Party Guide," which includes non-alcoholic beverage and food recipes to be enjoyed during the holiday season and a "Designated Drivers...Friends For Life" folder explaining the importance of the Designated Driver.

Happy Holidays To You and Yours

Neal & Paris Baggett

STEVE WALZ Construction

Remodeling Room Additions Garages - Porches

CUSTOM BUILT CABINETS CUSTOM BUILT HOME ON YOUR IMPROVED LOT CAN SAVE YOU \$\$\$\$\$\$



Phone 428-9355

LOWEST RATES IN TOWN

On U.P.S. Shipping Pick Up after 5:30 pm Packaging Services also available



Your Hometown Computer Store 231 E. Main off M-52 428-7011 M-F 12 - 6 S 10-3

MANCHESTER my neighborhood

For the past 18 years, I've been helping my neighbors here in Manchester protect the things they value with State Farm insurance I'm proud of this community and grateful for my many friends here.

Thanks to all of you in Manchester, for being my "Good Neighbors."

MATT DONNELLO 305 Beaufort Box 505 Manchester 428-8364

Next to the Middle School Play ground

State Farm Insurance Companies Home Offices: Bloomington, Illinois Like a good neighbor, State Farm is there.

CHRISTMAS TREES

\$10

All sizes & shapes 7 miles West of Manchester off Austin Rd. to Faye Lake Rd.

Follow signs Sat. & Sun. Only Huge Selection Cut Your Own

FUND RAISING

Manchester Sportsman Club 8501 Grossman Road Friday 6:45 p.m.

Manchester American Legion 203 South Adrian Street Saturday 7:00 p.m.

HOLIDAY GREETINGS

FROM THE SERVICE DEPT. AT MIDWEST FORD

The Home of: Personalized Service Guaranteed Work Factory to Consumer Connection Local Shuttle Free Coffee

Early Bird/Night Owl drop off box Certified Mechanics

NEW Oil Change Club - Buy 9, get 10th FREE

We are New & Improved. Committed to Quality Your Satisfaction is our Main Goal. Call us for any mechanical need.

428-8343 510 W. Main M-F 7:30 - 5:30

STAGECOACH STOP U.S.A. New Year's Eve Celebration

party party party party party party party party

\$55 Per Couple A FULL CASH BAR AVAILABLE

Your Evening Includes:

COUNTRY BEEF BUFFET DINNER with Mashed Potatoes & Gravy; Au gratin Potatoes, Green Beans with Almond Slivers, Buttered Carrots, Beef Stroganoff and Our Famous Chef Carved Beef. GARDEN FRESH SALAD BAR with Salad Fixings, Vegetables, Cold Salads, Hot Rolls & Muffins with Butter, and Dessert of the Day. LIVE DANCE BAND "THIN ICE" Progressive Country, 50's and 60's, Jazz, Requests Welcome, Large Dance Floor.

After Midnight Continental Breakfast

Party Hats-Favors-Noise Makers-Party Hats-Favors-Noise Makers Located on US - 12, 8 miles West of Clinton in the Irish Hills

Call for Reservations: 517 - 467 - 2300

THE MANCHESTER ENTERPRISE

The Center of the Universe

125th Year — No 9

Manchester, Michigan

35c per copy



DOWN MEMORY LANE Cont. from page 1

I shall not send home any money, I guess, for I lent Sergt. Thoms now in the Commissary Department, 15 dollars. I got a revolver the other day for five dollars. I don't know whether Leem intends sending home any money this time or not.

The prospect for fighting here seems to be on the decline. We are strong enough to feel very confident of the result if attacked. Rations are still very scarce but we live in hopes of better times soon. I dread the journey of going over the mountains if we go but should enjoy being there much.

I did get the letter you sent with the quid of gum in it and it did not stick as the other did, either. That was when we were just going into winter quarters at Lenoir. I thought the best way to acknowledge the receipt of let-

ters would be to enclose them in another envelope and send them to you. I have a book, "Tales of a Grandfather". It is sketches of Scottish History by Sir Walter Scott, which one of our boys took from a deserted house in the suburbs of Knoxville which our Picketts burned to prevent it from being used as a hiding place for rebel sharpshooters. I'll send it to you sometime, I guess. I send you a photograph for your album — no less a personage than Gen. Burnside himself. Write often. Very often.

Yours truly,
E. J. Irwin, Esq.

I don't know when I'll get a chance to send this but it shall go by the first mail. E. John Irwin, Esq.

—I wish you all a Merry Christmas.

MADD Announces 1993 Student Poster/Essay Contest

Mothers Against Drunk Driving (MADD) is again conducting its annual Poster/Essay Contest open to all students in elementary through high school.

The 1993 contest theme is "What a Wonderful World This Would Be, If Drivers Remained Alcohol-Free!"

Students can submit entries in either or both of the poster/essay categories. The poster competition is open to students in grades 1-12; the essay competition, to students in grades 4-12. All entries are judged within appropriate grade divisions.

The contest is designed to give students an opportunity to creatively express their views on drunk driving while raising

awareness of the issue among their peers.

In Michigan in 1990, of fatally injured teenage drivers (15 to 19 years old), 37% were found to have alcohol in their blood systems prior to their crash, with 46% at legally intoxicating levels (i.e., greater than or equal to 0.10% Blood Alcohol Concentration), as reported by the Michigan Substance Abuse and Traffic Safety Information Center. The contest encourages students to learn about the problems and impact of alcohol impaired driving. It also allows students to contribute to their communities by not only educating families and neighbors about the tragedies caused by drunk driving but also the preventive measures that can be taken. Schools and other organizations are encouraged to participate in their local MADD chapter contest whenever possible. If there is no local event,

entries may be sent directly to the State for the qualifying individual competition; first place winners from that are then entered in the State final. The student entry deadline is January 29, 1993. The State Contest judging is March 9, 1993. In all, the State Contest gives out 42 cash prizes: first place, high school division, State finalists receive \$200; junior high division, \$150; and elementary division, \$100. Other top placing entries are also awarded cash prizes. All students entering the State Contest are sent a letter of recognition and a participation ribbon. First place entries from both the local chapter contests and the State event qualify for the MADD, National Poster/Essay Contest held in the spring. To obtain an official MADD Poster/Essay Contest entry form and rules, contact: MADD, Michigan State Office, 910 Eastlawn, Midland, MI, 48642; PH (517) 631-MADD.

POINSETTIAS



RED - PINK - WHITE

Quantity Discounts \$2.50 and up
4" Poinsettias 10 or more \$1.99 ea.

EVERGREEN WREATHS, BLANKETS ROPING MADE FRESH DAILY

Large BLANKETS With Red Ruscus cones & Ribbons \$30 & up
Small BLANKETS With Red Ruscus cones & Ribbons \$20 & up

EVERGREEN CEDAR and PINE ROPING 50 ft. coil \$25.00



WREATHS



WIDE VARIETY

2 ft. Untrimmed... \$6.00 2 ft. Trimmed... \$10.00
3 ft. Untrimmed... \$15.00 3 ft. Trimmed... \$20.00
4 ft. Untrimmed... \$25.00 4 ft. Trimmed... \$30.00

LARGE VARIETY OF FRESH EVERGREEN DOORSWAGS \$15.00 & up

FRESH XMAS GREENS & CANDLE ARRANGEMENTS \$12.50 & up

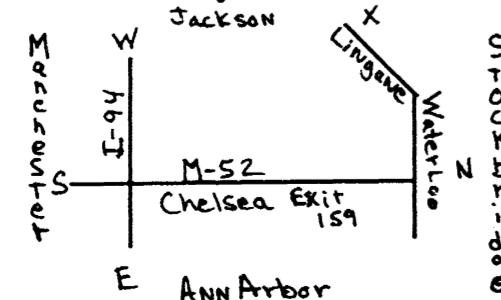
Open Monday - Saturday 8am - 5 pm
Sunday till Christmas 12 - 5

CHELSEA GREENHOUSE

475 - 1353
7010 Lingane Rd. Chelsea

Charter Member F.T.D.
Member Teleflora

Blooming Plant - Terrariums - Balloons
Planters & Green Plants
also a wide variety of Cut Flowers



A Good Selection of New and Used Cars On Our Lot

TIRB CHEVROLET & GEO

Phone 313-428-8212 or 313-428-8492
131 ADRIAN STREET MANCHESTER, MICHIGAN

GREAT CHRISTMAS GIFT IDEAS

Computer Programs for Fun and Education:

- Mickey's ABC's (Disney) Ages 2 - 5 with sound source \$40
- Mickey's Memory Challenge Ages 5 + \$30
- Mickey's Jigsaw Puzzles Ages 5 + \$30
- The Playroom winner of 6 early learning awards \$35
- Sim City \$35
- Sim City Supreme for Mac \$40
- Sim Ant (IBM or Mac) \$40
- Mavis Beacon Teaches Typing \$35
- Type! (IBM or Mac) \$25
- The New Print Shop \$45

Woodbrook ENTERPRISES INC

Your Hometown Computer Store

231 E. Main off M-52 Now open Saturdays
428-7011 Fax 428-7955 10 - 3
Jim Achtenberg Mon-Fri 12 - 6

GOD REST YOU MERRY, GENTLEMEN

Carol-singing at Christmas-time is, of course, a very ancient custom. Long ago the carols were purely religious hymns, expressing joy for the birth of the Saviour Christ, but in the course of time all sorts of merry tunes specially composed for singing at Christmas-time came to be known as carols. This is one of the oldest carols, and it tells the story of Christ in simple verses. It has been sung in England for centuries, and there are many different versions of the carol, but that given here is perhaps the best.

GOD rest you merry, gentlemen,
Let nothing you dismay;
For Jesus Christ, our Saviour,
Was born upon this day,
To save us all from Satan's power,
When we were gone astray.

So frequently to vanquish all
The friends of Satan quite."
O tidings, etc.

O tidings of comfort and joy,
For Jesus Christ, our Saviour, was
Born on Christmas Day.

The shepherds, at those tidings,
Rejoiced much in mind,
And left their flocks a-feeding
In tempest, storm and wind;
And went to Bethlehem straightway
The Son of God to find.
O tidings, etc.

In Bethlehem, in Jewry,
This blessed Babe was born,
And laid within a manger
Upon this blessed morn;
The which His mother Mary
Nothing did take in scorn.
O tidings, etc.

But when to Bethlehem they came,
Whereat this Infant lay,
They found Him in a manger,
Where oxen feed on hay;
His mother Mary kneeling,
Unto the Lord did pray.
O tidings, etc.

From God, our Heavenly Father,
A blessed Angel came,
And unto certain shepherds
Brought tidings of the same;
How that in Bethlehem was born
The Son of God by name.
O tidings, etc.

Now to the Lord sing praises,
All you within this place,
And with true love and brotherhood
Each other now embrace;
This holy tide of Christmas
All others doth deface.

"Fear not," then said the Angel,
"Let nothing you affright;
This day is born a Saviour,
Of virtue, power and might,

O tidings of comfort and joy,
For Jesus Christ, our Saviour, was
Born on Christmas Day.

MERRY CHRISTMAS

from the Enterprise

Kathy
Lanettia
Emory

Please deliver this copy of THE MANCHESTER ENTERPRISE to—

Manchester Library
P.O. Box 135
Manchester MI 48158

In this week's Enterprise

Little lights of Christmas.....	Page 2
Building a House Part 7.....	Page 3
Editorial/Opinion.....	Page 4
Scouting.....	Page 5
Church News.....	Page 6/7
Community News.....	Page 8/9
Christmas in Manchester.....	Page 10/11
Sports.....	Page 12/13
School News.....	Page 14
Local Government.....	Page 16
Classified.....	Page 18