

Are You Ready For A Tornado?

To focus attention on tornado safety planning, Governor John Engler has declared March 29 through April 4 as Tornado Safety Week in Michigan. Residents are encouraged to practice their "just-in-case" procedure for tornado warnings.

the day or night in almost any month of the year. Most, however, occur in April, May, June and July during the late afternoon and evening hours, generally between 3 and 7 p.m.

Tornadoes develop and move rapidly, often with little notice or forewarning. When a **tornado watch** is announced, residents should gather a first aid kit, flashlight and portable radio. They should stay tuned to

local radio and television stations. A watch means that conditions are right for development of a tornado.

A **tornado warning** means that a tornado has actually been sighted nearby and everyone in the area should take action. Go immediately to the basement, taking cover under something sturdy. If there isn't a basement, move to the lowest floor possible, in a small room or closet.

Again, stay low and if possible, under a heavy object. Stay away from windows.

At work or school, if a basement is not available, move to an interior hallway on the lowest floor possible. Avoid rooms with a large, free-span roof, like gymnasiums. If caught in the open during a tornado warning, seek shelter in a ditch, ravine or other place below ground level and stay as low as possible.

Tornadoes generally develop from severe thunderstorms. Although not all severe thunderstorms spawn tornadoes, twisters are more likely to occur when there is unseasonably warm and humid air at the earth's surface and cold air at middle atmospheric levels with strong upper-level jet stream winds. In Michigan, this clash of air masses is more likely to occur in the spring and in the southern lower part of the state according to officials from the National Weather Service.

Property owners can also be prepared by ensuring that they have adequate coverage for their homes and personal belongings under their homeowners insurance policies. Tornadoes are considered "windstorms" and covered by virtually all homeowners policies, according to the insurance industry representatives. However, certain limits and requirements may apply.

Here's What You Can Do To Prepare For Such An Emergency

□ Prepare a home tornado plan:

• Pick a place where family members could gather if a tornado is headed your way. It could be your basement, a center hallway, bathroom, or closet on the lowest floor. Keep this place uncluttered.

• If you are in a high-rise building, you may not have enough time to go to the lowest floor. Pick a place in a hallway in the center of the building.

• Assemble a Tornado Safety Kit containing —

- ✓ First aid kit and essential medications
- ✓ Battery-powered radio, flashlight and extra batteries
- ✓ Canned food and can opener
- ✓ Bottled water
- ✓ Sturdy shoes and work gloves

• Also include in the kit written instructions on how to turn off your home's utilities

□ Conduct periodic tornado drills so everyone remembers what to do when a tornado is approaching.

□ Stay tuned for storm warnings.

• Listen to your local radio and TV stations for updated storm information.

□ Know what a tornado WATCH and WARNING means.

(See above)
□ After the tornado passes...

• Watch out for fallen power lines and do not venture into the damaged area.

• Listen to the radio for information and instructions.

• Use a flashlight to inspect your home for damage.

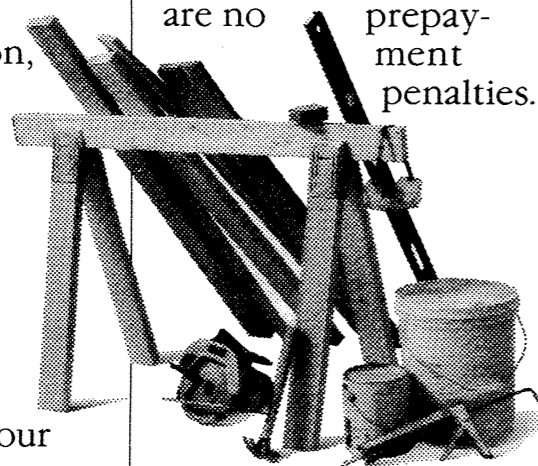
If you have questions about home equity loans, we'd like to give you a multiple choice answer.

Comerica not only has a variety of home equity loans, we also make it easy to pick the one that's right for you. Maybe that's why we make more of them than any other bank in Michigan.

All Comerica home equity loans feature competitive rates and a variety of payment options. Use them for home improvements, college tuition, debt consolidation, any large purchase such as a car or a boat, and enjoy the tax deductible* advantages.

A. Fixed Rate Equity Loans
You can put your home to work for you. Borrow from \$5,000 to \$200,000 depending on your available home equity. A Fixed Rate Equity Loan has a lower annual

percentage rate than most credit card loans. You can choose a fixed monthly payment that fits your budget. And there are no prepayment penalties.



B. Equity Line.
For homeowners who require credit amounts from \$20,000 to \$200,000 and want the convenience of a credit line.

You can access your Equity Line up to your available credit limit just by writing a check.



C. Equity Line with VISA Access.

Set up a credit line from \$5,000 to \$20,000. Then you can access it by check or your IDEAL VISA card. It's perfect for homeowners who want credit convenience.

D. All of the above.

With Comerica Loans-By-Phone you can apply for all of the above home equity loans from your home or office. No getting in the car. No looking for a parking space.

You can do it at your own convenience.



Just give us a call at 1-313-428-8334

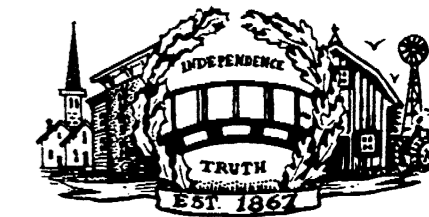
COMERICA

Where the bottom line is you.

*Interest incurred on an equity loan is currently deductible for Federal income tax purposes provided certain conditions are satisfied. Comerica makes no representation that interest incurred on an equity loan will be deductible in every circumstance. Tax laws are subject to change. You should consult your tax advisor regarding the tax advantages/ deductibility of your account. Property insurance will be required.

THE MANCHESTER ENTERPRISE

The Center of the Universe



124th Year — Vol. 124, No 25

Manchester, Michigan

35¢ per copy

Down Memory Lane

With Nathaniel Schmid, written in 1921, reminiscing of 1871 when he first arrived. A special thanks to Dorothy Davies of the Manchester Township Library who made this article available to the Enterprise.

We have reproduced the article as written, except space has necessitated hooking text blocks together.

Third and last part of Schmid's narrative.

"I.M. Robinson and Wait had a livery in the rear of the hotel

In those days of no automobiles, their business ran well. Where St. Mary's church now stands facing the public square,

Henry Youngmans ran the Farmer's Hotel and boarding house there.

Tom Farrell, Sam Blake, George Coulson and Nate Hay Handled all our freight and did it with a two wheeled dray.

The only hack was owned by Mack Robinson, he handled the mail and ran a hack line. He met all the trains and was always on time.

Out on Jackson street in Luckhardt's stone building were Field and Dawes.

Where Mrs. Miller's hotel stands just across the way, was a Cooper shop run by a man named Hay.

Going west out Jackson Street, though not very far,

The Schaibles had a brickyard just east of C.B. Carr.

We turn around here and toward the town came back. Until we reach the Lake Shore railroad track.

Follow this track south about five hundred feet or more,

We come to the Lumber yard of Doray and Moore.

Now we go east down past the school house about a half mile or

so Here was East Manchester; then called Soulesville you know.

In a small store west of the bridge they sold groceries, tobacco and candy,

And it was said they also sold beer, wine and brandy.

Where the village now pumps water to furnish electric light, Stood Fountain's big premium mills on the very same site.

At the end of the race, just along the river's banks, Sherwood and Sloat had a Sawmill where they sawed logs into planks.

In Seymour Hammond's cooper shop, many coopers worked every hour, making barrels for cider, pork, apples and flour. Wisner & Sons did teaming, moved building and drove piles.

Their business extended all over the country for many miles.

The Morgan's general store was the last in the town,

It was in the building where Sorter now makes butter of great renown.

The people of those days were better than now you will agree, For then they had six churches, and now there's only three.

Six doctors also looked after the citizens good health,

They were Bessac, Lynch, Munger, Root, Conklin and Selfe.

In East Manchester, there lived another one, Dr. Jesse Sherwood, He treated the horses and 't was said he was good.

The carpenters and masons were good and also plenty

I can't name them all, but there must have been twenty.

There was Si Ruckman, Jim Lee, Mingus, Mathers and Reed And two brothers, Ed and Joe O'Neil who never agreed.

John Merithew, William Lewis, Harvey Rose, George Hay, Chancey Fox, John and Christ Sauer.

Of masons there were Cushman, Sherwood, Jim Peeler, Edwards, and Hisson the strong.

And Joe Greenman, the bricklayer, who did not last long. Gerry Lovejoy was the painter, always ready for a horse trade, All Youngmans painted the carriages which Bill Neebling made.

There were four attorneys, Ezra Norris, Ralph Hewitt & Co., Rodney Palmer and Charley Craft, who was also a farmer.

In those days, same as now, people stood up for their rights The result was that the Dutch and the Irish often had fights. Munson Goodyear then was Justice of Peace

He let the boys off easy by paying their fees. Charley Sanford, and Joe Lazelle bought junk; old iron and rags,



Exchange Place - circa 1873 on a busy Saturday in the summer. Note the first building on the left fore ground. Union Hall which was later torn down and replaced with the Union Savings building Note most horse drawn rigs are buggies or light wagons used for transportation.

They traded the farmers tinware for dried apples and tags. John Betz and Charlie Senger in the fall were always about They made it their business to cut and pack sauerkraut.

Frank Freeman, the drover, bought cattle, sheep and wool. Mort Case was always on the street and bought grain to keep the elevators full.

There was Marsden, Refior, Filber and Couch the tailors four, Grossman, Weiss Engel, Walker, Sam Perkins, Andrew Safe

Were the six shoemakers living in this town of the free and home of the brave.

Mark Case was station agent of the Detroit, Hillsdale and Indiana depot,

While Al Spencer was the boss at the old station below.

In the basement of the Goodyear Hall block, George Sherwood had a billiard room, While Roy Conklin, where Mrs. Wurster now lives, was making the brooms.

On Boyne Street, in the old brick shop, which then stood on the Bill Uhr lot,

Was Pierce, the old Blacksmith, whom I almost forgot.

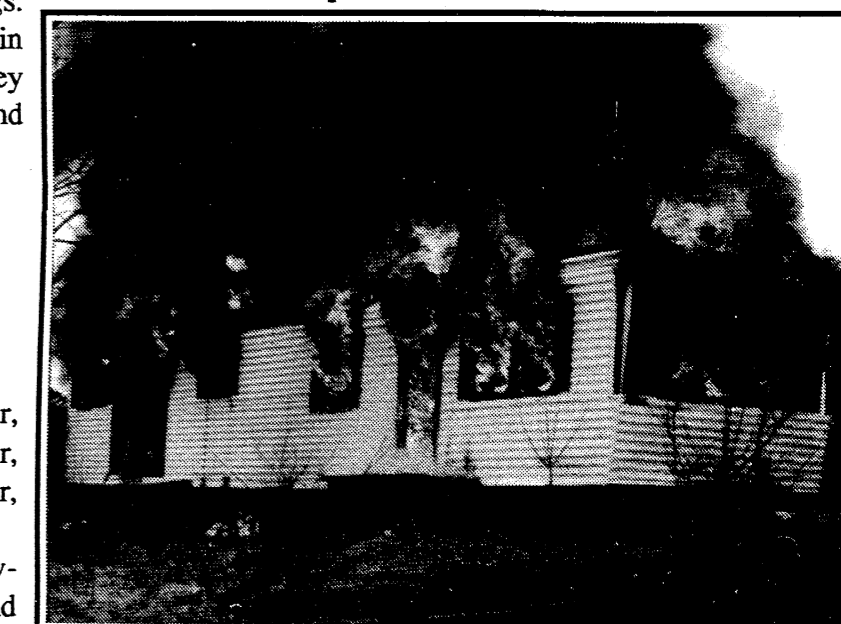
Professor Wing was then the principal of the high school, He married one of the teachers by the name of Poole.

Captain Spencer was the sexton at Oak Grove, he buried the dead,

And this ends my story, I think enough has been said."

Our apology to Nathaniel Schmid and to the Manchester Township Library for not duplicating the poetry narrative in the exact forum it was written. Next week, railroads we hope.

Fire Department Practice



Township fire department held a practice burn on the trailer owned by Mark Swope Sunday March 29th. 15 minutes the trailer was destroyed.

Practice put to use



Fire destroyed this trailer located on Sharon Hollow Road about one half mile south of Grass Lake Road. Several dogs and cats were lost in the fire. The fire was intense and the trailer could not be saved

Inside This Week's Issue

Karaoke Crooning.....	Page 2
Looking For A Pickup.....	Page 3
MHS Band Invades Florida.....	Page 6
Church News.....	Page 7
Library News.....	Page 9
Senior Citizens News.....	Page 10
125th Anniversary.....	Page 11
Village Proceedings.....	Page 16

Please deliver this copy of THE MANCHESTER ENTERPRISE to:
Manchester Library
P.O. Box 135
Manchester MI 48150

FEATURES

Karaoke Crooning — R. Zang

Can't sing. Can't dance. But I sure do love rock n' roll.

Thursday night last, I witnessed a croonesome and sometimes off-tunesome event that definitely gives music back to the people. Karaoke has finally splashed onto the midwest scene and the chance for you to participate is only a twelve-mile swim up 52 to Chelsea Lanes. Can you dig?

Huh? Karaoke? Well, for you late comers to what's cool in school, Karaoke is the CD playback of hit tunes, minus the vocalist(s), so that real people like you can sing, on stage, with a real microphone, in front of a real audience. Wannabe Elvis? Swivel and preen in your "Blue Suede Shoes"? Wannabe a "Do Right Woman"? Aretha, move over, honey, cause soul moved out of Detroit. Yes, you have a chance to stand on stage and be anyone you want for whatever reason you've got every Thursday night in the Mark IV Lounge.

Walked into the lounge at about 8 P.M. to large tables filled with an assortment of men, women, and children, not your typical lizard variety, politely waiting for the hostess to kick it off. Kathy, a petite spark plug, soon breezed into the room and began passing out song lists, small forms for filling out requests, and pencils. She then bounded onto the stage, grabbed a mike, and proceeded to warm the crowd.

"Good evening everybody, welcome to the Mark IV Lounge in Chelsea Lanes. Tonight we're going to have another wonderful evening belting out tunes. Its Karaoke night."

Kathy then explained, much like a game show host, how to get involved. Check through the song lists to find the song you wish to perform, fill out the request form with your name, song title and number code, and hand it back to her. When she calls your name, all that needs happening is for you to slide up on stage, grab a mike, wait for the

music to a one-anna-two-anna, and coolly vocalize the lyrics to your hit selection as they appear on the color monitor in front of you, while keeping time to the full accompaniment behind you.

Kathy punched in, "I Honestly Love You", by Olivia Newton John, closed her eyes, and used her throaty smoky voice to tease the audience with star potential. Impressive beginning. It didn't take long to get the place rockin' when a young group of five Reebok women shared two mikes so they could natty sing Joan Jetts', "I Love Rock N' Roll". Ooh I could just see the spiky neck bracelets and leather everything glued to their Levis and cotton sweatshirts.

Growl. The Men on the bar stools, hanging out in the background, started tipping their longnecks a little quicker.

Then came Rodney, back for a return engagement, cheered to the stage for his rendition of Roy Orberson's, "Pretty Woman". I saw the potential for scoring impressionable marks on female checklists. Rodney in his matched tenor voice smoothly worked into, "Pretty woman, walkin' down the street, pretty woman every time we meet," as the crowd started clapping their hands and swaying in time to the music. Playing the crowd, Rodney drew cheers when he snarled, "Mercy!", and displayed a perfect shy grin for all those young heartthrobs.

Now hey, where else can you get this kind of attention?

Then came a bearded Kris Kristofferson look-alike, in jeans, rolled sleeves, and shiny gold trucker's hat, to deep and mournfully sing Hank Williams, "I'm So Lonesome I Could Cry." I swear, dusty sand swirled round the lounge, and everybody started thinking of how lonely they were glad they weren't. I'm sure his honey was thinking about treating him right later that night. The Men on the barstools grew kind of quiet, wondering if there was some-

thing to this Karaoke business.

Kathy then called up a young couple from, ye gads, Manchester, but the male half, who I know and you don't, turned cold turkey, and said, "Who, me? Not!" Hostess Kathy smoothed things over, even volunteering to help sing along, and then graciously allowed the uninitiated to remain seated. That told me that no means no, and it's cool. Whew. Get with it Manchester.

Then a little girl named Stacy, another regular, took her turn at the mike to the enthusiastic applause of friends and relatives so she could sing, "Grandpa (Tell Me About the Good Old Days)" by the Judds. With a small sweet voice, Stacy played out the Annie role for all the sighing parents in the audience. The Men politely stayed quiet, maybe wondering whether their wives had gotten the children to bed yet.

By 8:45, Mark IV was getting pretty crowded, and owner Ed Greenleaf and his significant helpmate Jerry, kept bringing in more chairs for people to sit on. Mind you, a league was bowing all this time, and no one was leaving. The two bartenders didn't even have time to wash glasses as the crowd demanded lubrication of a cola nature, or in brown bottles. I was living the

reality of a Bud Light commercial and fully expected the television cameras to roll right through.

Members of the Reebok 5 kept coming back on stage to do solo routines, or duets. Kathy was correct when she exclaimed, "Once you get up here, you'll want to keep coming up."

Karaoke allowed the additional twist of a birthday celebration, so of course an entire birthday contingent, the source of the Reebok 5, overflowed the stage and blared out, "Happy Birthday". For anyone who forgot, the color monitor reminded them of the lyrics.

See Karaoke page 15

Out and About — by gar

Cherry pie, oh how I remember the cherry pie that mom used to make. The cherries were tart with a deep rich red color, nestled down into the filling made of tapioca that was ever so sweet. The sweet filling offset the tartness of the cherries and every mouthful was a true delight. The crust was the very best that was ever made. So very flaky, that crust seemed to be like very fine sheets of parchment. The crust all blended together and there was always some big lazy S's, with little slashes surrounding them carved in the top. The edges of the crust where they circled the pie pan were knurled where mom's delicate fingers made the ruffles.

The color of the crust was always a very delicate golden and the crust edges had that bloom of fresh tan-brown that is only seen on pie. The aroma that emulated from the kitchen while the pie was baking was indescribable. I can smell it

now! Sometimes in the summer when it was a warm day the kitchen window was open and if the wind was light and the breeze not strong, mom's cherry pie could be smelled the two blocks to the field where we kids played ball. When the aroma of that pie wafted across the field gar would race for home.

You had to be extra careful when removing a piece of pie from the pan. Never waste a touch of the crust or cherries. The pie when taken from the pan would be ever so fragile and would almost fall apart. I was afraid that I might lose some of the filling or crust. Strange as it may seem I can still taste that cherry pie.

I'll just bet there are some good pie makers in the area. Ol gar would give a double saw buck for one of those melt in your mouth cherry pies. Anyone out there up to the challenge.



Man, Steve, Mark & George Heydlauff

At HEYDLAUFF'S, you deal with HEYDLAUFFS!

When you come in, we'll wait on you.
When you call, you'll get us on the phone.
We'll be the ones to deliver and set up your appliances.
We're even our own parts and service department.
So, how do our prices & service compare with others?
Just be sure you come and talk to us before you buy.

HEYDLAUFF'S
APPLIANCES & ELECTRONICS

113 NORTH MAIN STREET in DOWNTOWN CHELSEA 313 / 475-1221

Tim's Lawn Care

313-428-7001

"The Lawn Ranger"

- ORGANIC LAWN CARE AVAILABLE
- 12 YEARS EXPERIENCE
- LICENSED - STATE OF MICHIGAN
- CERTIFIED - STATE OF MICHIGAN
- INSURED
- A COMPLETE BALANCED FERTILIZER PROGRAM FOR YOUR LAWN



A WELL FEED LAWN IS A HAPPY LAWN

Call Now For a FREE Lawn Analysis and Estimate
313-428-7001

MANCHESTER ENTERPRISE

The Second Front Page: CHOOSING A 2ND VEHICLE

LOOKING FOR A PICKUP

We are in the market for a second vehicle to replace "old blue", my 1970 Pickup. I acquired old blue two years ago and the body and frame has become quite rusty. The front wheels tow outward and wear the tires. We purchased the truck, a full sized pickup, for three hundred and fifty dollars. Since then a new exhaust system, new rear tires and some make-do body repairs to cover the worst of the holes. The engine is excellent but the transmission leaks some oil. Nothing that could not be fixed at a major expense.

I use both my car and truck for multiple purposes. Personal transportation, delivering papers, taking the draft of the Enterprise to Tecumseh weekly and returning with the weeks issue, additionally the building inspections for three townships are made with either my car or the truck. Lately the car has been the vehicle of choice. It's time to take the burden off the car and return it to the truck. With that goal in mind I approached some of our advertisers for advice. The only parameters we set were, Domestic vehicle produced by one of the Big Three, automatic transmission and a crew cab for more interior room. We re-

quested help from Midwest Ford, Tirb Chevrolet, Underwood Chevrolet, Palmer Ford, Faist-Morrow, Village Motor Sales Dodge. Village declined as not interested in helping. Chrysler Corp. is missing. Ray Tirb gave us the following info.

A Family's second Vehicle by "Wheels and Deals." Is it a passenger car? A pickup? A pickup with an extended cab? A van? Or just a small go to work vehicle? It all depends on your needs, desires and life style.

Are you a family of four? Your vehicle could be a car and a pickup (extended cab, regular cab, large pickup or a small pickup). A family of four or more your vehicle could be a van and a pickup.

Is your family no longer at home. In that case your vehicles could be most anything that fits your life style. However don't forget the grandchildren when choosing a vehicle in this segment of life. At least 75% of families will own a pickup some time during their life.

The pickup for years has been assumed to be the second vehicle. As years have passed however pickups have become

more adaptable to the ever changing demands of today's mobile society.

A pickup can almost be made to order with automatic transmission, power steering, power anti lock brakes, air conditioning, cruise control, tilt wheel, power windows, power door locks, stereo radio, cassette players, CD players, your choice of seats, tires, wheel covers, wheel strips, paint applications, engines and two or four wheel drive.

To make the pickup more family oriented you can get extended cabs, with rear seats, bucket seats and split front bench seats. Four door pickups are also available with all of the above and all pickups come with a full complement of seat and shoulder belts.

Now that you have made a choice of a versatile adaptable pickup, what can you do with it? Haul things such as snowmobiles, 4 wheelers, furniture, firewood, building materials, groceries most anything that can fit in the box or be tied on to it. With the properly equipped pickup you may carry a camper or haul a trailer.

Where can you take your pickup? Anyplace it will go, church, work, the club, vaca-

tions, shopping, cruising or the baja with 4 wheel drive.

One reason for the pickup becoming so popular as a family vehicle is that many young singles (male and female) often choose a pickup for their first vehicle. When they start raising a family the versatility of the pickup is already known. Really what is a second vehicle? A pickup is often the first vehicle and the family opts for the most economical solution.

Don Coward of Midwest Ford adds the following: "The Ford pickup trucks come in many varying sizes, shapes, lengths, colors and options of mechanical components of engines, transmissions, seating and amenities.

The smallest of the Ford line is the Ranger series, the sales leader of the industry. From the barest of necessities to the ultimate in options. Two wheel or four wheel drive, regular or super cab, wheel base from 108 inches to 125 inches. Sports packages galore.

Full size Ford pickups have been the sales leader for 15 years, quite a success story. One half ton to one ton units are available. Engines from the 6 cylinder, 300 cubic inch to V-8 460 cubic inch in gas and the 7.3 Liter diesel provide the power. Wheel base of 117 inches to 168 inches, regular cab 6 3/4 foot bed or 8 foot bed. Super cab and crew cabs are choices. Colors galore.

Ford reintroduce's the flare side this year with 2 or 4 wheel drive and regular or super cab. If you are that unique person that wants a truck tailored to your individual choices options such

as special paints, running boards, grill guards, driving and fog lights, fifth wheel hook ups, towing options and other customizing options are available at Midwest Ford.

Keith Bailey at Underwood in Clinton points out that many stock units can be found. Keith points out that age is no factor in buying pickups. The availability of comfort and ride can suit the needs of all buyers.

Ted Faist of Faist-Morrow in Chelsea says the used pickup market is very strong and that units of every type can be found if you are a patient buyer. A lot of folks buy used units for transportation or special uses. Old pickups for hauling wood, junk or just knock around have become popular. Watch for rust and underbody deterioration if you are in the market.

Palmer Ford in Chelsea has an extensive line of both new and used vehicles. Palmer Ford is the oldest Ford Dealer in Michigan. We can fit your needs in either new or used.

We have been looking for that replacement of "old blue". So far we have priced a limited number of new units from a stripped down Ranger, to a snazzy S-10 with lots and lots of trimmings. We have also looked at an immaculate 89 Ranger XLT, one owner extra sharp and clean. Prices so far are in the mid \$7,000 to mid \$14,000 cost range including license and tax. We will keep you posted of our final decision. Hopefully a real good deal will develop. How about it dealers can you come up with one of those fabulous buy's or steals we hear about.

Bixby Medical Center 13th Annual Run for Health



Saturday, May 2

Bixby Medical Center's 13th Annual Run for Health will be held on Saturday, May 2, beginning at 9 a.m. Four events — a 1-mile run/walk, 5K walk, and 5K and 10K runs — provide an opportunity for area walkers and runners to test their fitness levels on a scenic, neighborhood course.

All runners will be registered for prize drawings. First, second, and third-place awards will be given to male and female finishers in each age division... and all runners will receive a ribbon commemorating their participation in the run.

T-shirts will be provided with each paid registration with all proceeds benefitting the Bixby Foundation Scholarship Fund.

Come join the fun at Bixby and Run for Health!

1-mile run/walk begins at 9 a.m. Cost: \$15/adults; \$10 students 18 and under
5K Run begins at 9:30 a.m. \$17 Race Day registration
10K Run begins at 9:30 a.m. Use the form below to register. For more information, contact BMC at 517/263-0711, Ext. 276.
5K walk begins at 9:35 a.m.

Bixby Medical Center 13th Annual Run for Health

Saturday, May 2, 1992, 9 a.m.

Entry Fee: \$15 (Adult) (\$17 Race Day Registration) \$10 Age 18 and under (For office use only)

Total Enclosed: \$ _____

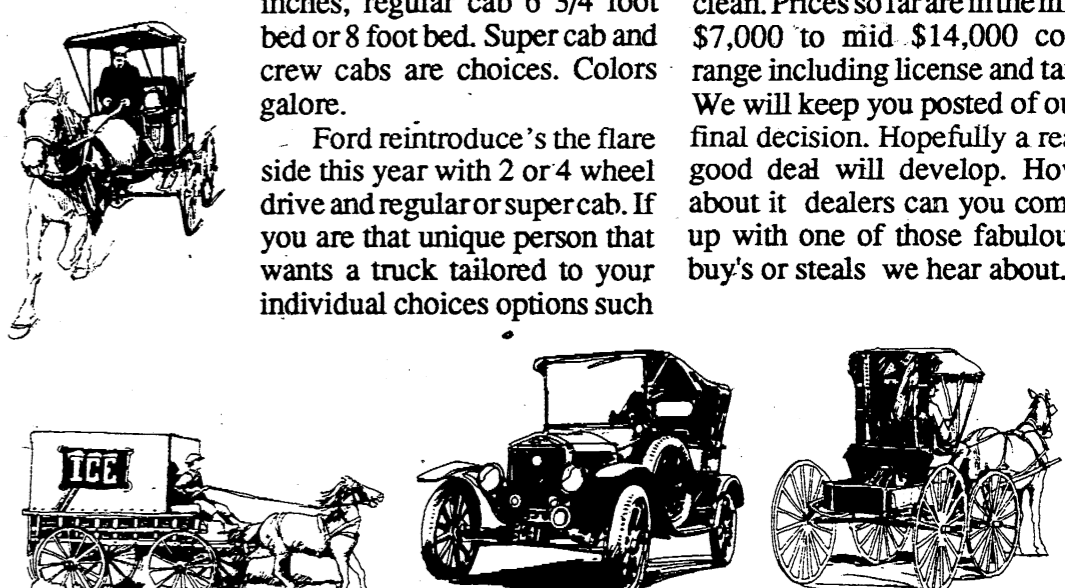
Last Name: _____ First Name: _____
Address: _____ City: _____ State: _____ Zip: _____
Date of Birth: _____ (circle one) M F Age on race day: _____
Event: 1 Mile Run 5K Run 5K Walk 10K Run
Age Division: 10/under 11-14 15-19 20-24 25-29
(Circle One) 30-34 35-39 40-44 45-49 50-54
55-59 60-64 65-69 70/over
T-Shirt Size: S M L XL Corporate Team

Checks should be made payable to: Bixby Community Health Foundation
Mail entry deadline is April 24, 1992
Send to: Public Relations Department
Bixby Medical Center
818 Riverside Avenue
Adrian, MI 49221

In consideration of accepting this entry form, I hereby, for myself, my heirs, executors and administrators, waive and release all rights and claims for damages I may have against the Bixby Medical Center Run for Health, the sponsors of these events, its agents, representatives, successors, and assigns for any and all injuries suffered by me at said Run for Health, or which may arise out of traveling to, participating in, and returning from these events.

Runner's signature: _____ Date: _____
Parent/Guardian (if under 18): _____ Date: _____

This form may be copied



PORCH SALE

At The Mill

SATURDAY ONLY! April 11th
10 a.m. to 5 p.m.

40 - 80% OFF Selected Merchandise

The 18th Century Shoppe and

SURPRISE! SURPRISE!

201 E. Main St.

Manchester

Editorial / Opinion

Letters to the Editor — From the Manchester Area Chamber of Commerce

From the inception of its present embodiment in 1984, the Manchester Area Chamber of Commerce has taken the position that the Manchester Schools are pivotal to the entire Manchester area community. We initiated the School Appreciation Picnic and were joined later by the Manchester Optimist Club in sponsoring this annual welcome to school personnel at the beginning of the school year.

Yvonne Henry, Principal of Klager School, has asked us to assist in arranging support for the event which celebrates a child's successful completion of the goal of 100 hours of "Reading

at Night". A later MACC mailing will contain a general request for support. The enclosed copies of communications from Yvonne Henry describe a need for "prizes" to be given to the young people who qualify for this special recognition and for refreshments for the breakfast. The last time this program was held about 150 young people qualified. Each child is allowed to bring one adult, therefore, enough prizes for about 150 and enough refreshments for 300 plus people will be needed.

Your help in supporting this program will be appreciated. Thank you, Leonard Bruner, Vice President MACC

...And, from Klager Elementary

Dear Friends,
Klager Elementary students in grades kindergarten through 4th grade have been participating in the R.A.N. (Read at Night) program sponsored by our PTO since January 17. Children read at home and keep track of the time read. The time is recorded weekly and children are rewarded with stickers, pencils, certificates, ribbons, books, etc. when they reach specific times. The ultimate goals are to receive an invitation to the Reading Breakfast held on April 25 and

to get a t-shirt that says "I.R.A.N. 100 hours".

The community of Manchester has been very supportive of this activity in the past and I am requesting that continued support. This activity is not possible without you!

If your business or organization could provide us with small items (pencils, ballons, booklets, coloring books, folders, etc.) to be given to each child at the breakfast, or larger

items (books, calculators, notebooks, magic markers, etc.) to be used as door prizes, or food items to be used at the breakfast (eggs, donuts, coffee, orange juice) or a cash donation to cover expenses — would be greatly appreciated.

Donate what you feel comfortable with, any amount - large or small - is truly appreciated.

To arrange for a donation or if you have any questions, please call me at school (428-8321) or at home (428-7302).

Thank you so much,
Yvonne Henry, Principal

Kirk Excavating
Sand - Gravel - Fill Dirt
Basements - Driveways
Licensed & Insured
428-7938
Dave Kirk
14180 Schleweis Road
Manchester

THE MANCHESTER
ENTERPRISE
150 East Main Street
Manchester MI 48158
(313) 428-8173
USPS No. 327-460

The Manchester Enterprise is published each Thursday at 150 East Main St., Manchester, MI 48158, with second class postage paid at the Manchester Post Office.

POSTMASTER: Send Form 3972 to: Manchester Enterprise, P.O. Box 37, Manchester, MI 48158.

THE MANCHESTER
ENTERPRISE
Editor
Emory Garlick
Publisher
Limpert & Garlick, Inc.

Sports Editor
Jon Hardenbergh
Production
Kathy Kueffner
Ad Manager
Teresa Benedict
Front Desk
Lanetta Aldrich

One-year subscriptions are \$15 within Washtenaw County, \$18 outside the county. Deadline for display ads, photos, classifieds and news articles is Monday at 3:00 p.m.

© The Manchester Enterprise 1991. No part of this publication may be used without the written permission of the publisher.

FUND RAISING
Manchester Sportsman Club
8501 Grossman Road
Friday 6:45 p.m.
Manchester American Legion
203 South Adrian Street
Saturday 7:00 p.m.

THE
MANCHESTER ENTERPRISE
Serving our fair community...
The Center of the Universe!



Pick Up The Phone And Call...
"Dial A Hearing Screening Test"
For a free telephone hearing screening test dial:
313-475-7080
Sponsored by:
CHELSEA HEARING AID CENTRE
134 W. Middle St. Suite A
Chelsea, MI. 48118

STEIN ELECTRIC COMPANY, INC.
• Licensed & Insured Contractor •
• 24 Hour Emergency Service •
Ag. • Commercial • Industrial • Institutional • Residential
Motor Controls & Lighting
(313) 428-9050
Rick Graustein • Manchester, MI

Autoflex
by **Marchon**
Eyewear
The most amazing eyewear ever!
BRADLEY W. TAYLOR, O.D.
227 MAIN ST.
MANCHESTER, MI
428-8955

PREMIER CONTRACTING INC.
Full Service Residential Building & Remodeling
"Let us help you with your building plans"
Lots Currently Available
Ron Milkey
(313) 428-9826

Bruce A. Bates D.D.S.
500 Galloway Drive, Manchester, Michigan
(313) 428-8277
Complete Family Dentistry
• Adults & Children Always Welcome as New Patients.
We Accept Dental Insurance
VISA • MasterCard • Discover
Payment Plans Available
Gentle Dental Care
Relaxing Gas Available Upon Request

FROM **Woodbrook** 
Happy 125th Birthday, Manchester
FROM YOUR HOMETOWN COMPUTER STORE!
* FAX TRANSMISSIONS
\$1.00 per page anywhere in US or Canada
* UPS
Daily pickup at 4:00, \$1.00 surcharge
* COPIES
10 c. per page, blue, red, enlargements, reductions, legal size, 11 X 17 available 5 c. extra
Woodbrook 
ENTERPRISES INC.
231 East Main Street in Manchester
Open noon until 6:00 p.m., Mon. thru Fri.
Phone 428-7011 • FAX 313-428-7955 • Jim Achtenberg

High School Graduate Survey Class of 1991

Graduates of the class of 1991 will soon receive a phone call as the local school districts conduct the annual survey of their graduates. The survey is very brief but provides important information to the school district regarding what the graduates are doing. With the previous class (1990), the survey informed the local schools that 74% of the graduates continued their education; 54% of those who continued education also worked (an average of 25 hours per week); one in three who continued education did so at Washtenaw Community College; 61% of the graduates worked part or full time.

That and other information helps the local school to understand what their graduates are doing, and to a certain extent, how well they are doing. Graduates also have the opportunity to comment on the classes and services their school provided.

The survey is a telephone survey and conducted for Chelsea, Dexter, Manchester Milan and Saline schools by the South and West Washtenaw Consortium. 1991 graduates or their parents will receive calls during April. For information on the survey or for previous data, you may contact the survey coordinator, Bob Miller at 428-8327.

Marty's
Plumbing, Heating, & Air Conditioning
517-592-8144
Brooklyn
35 years experience

SMART STUDENTS **THINK AHEAD** and buy their Graduation Stationery at
The Manchester Enterprise
150 E. Main St.
Manchester, MI
428-8173
See our selection of
Announcements
Name Cards
Memory Books
Jewelry
Party Supplies

From the Michigan State Board of Education

For your information, I have enclosed notification from the State Superintendent of Public Instruction of Preliminary Qualification of Bonds for a school district in your area. This bond issue meets all of the requirements of Public Act No. 108, of 1961, as amended, for the qualification of school bonds.

If you need more information, please call Richard Kelley at 517-373-3344.

Robert G. Harris
Director of Communications

Dear Mr. Niedzwiecki:
In accordance with Act No. 108 of the Public Acts of 1961, as amended, I am hereby authorizing preliminary qualification of the district's bond issue per its application of March 16, 1992, covering the following proposition:

"Shall Manchester Community Schools, Washtenaw and Jackson Counties, Michigan, borrow the sum of not to exceed Six Million Nine Hundred Ninety-Five Thousand Dollars (\$6,995,000) and issue its general obligation unlimited tax bonds therefor, for the purpose of erecting, furnishing and equipping additions to and partially remodeling and partially re-equipping the Luther C. Klager Elementary, the Nellie Ackerson Middle School Buildings and the Manchester High School; developing and improving sites?"

This preliminary qualification is hereby authorized with the understanding that the Board of Education may now take official action calling for an election on June 8, 1992. The authorization is based on the current interest maturity schedule included in the bond application. Sincerely,
Robert E. Schiller, Superintendent of Public Instruction

Manchester Area Families Needed to Host Foreign High School Students

Foreign high school students will be arriving soon into the Manchester area for homestay programs, and the sponsoring organization is looking for a few more local host families.

According to Pacific Intercultural Exchange (P.I.E.) Executive Director, John Doty, the students are all between the ages of 15 and 18 years, have their own spending money, are fully insured and are anxious to share their cultural experiences with their new American families. P.I.E. has programs that range in length from two weeks in the summer to a semester and full academic year, where the students attend local high schools.

P.I.E. representatives match students with host families by finding common interests and lifestyles through an informal inhome meeting. Prospective host families are able to review student applications and select the "perfect match". As there are no "typical" host families, P.I.E. can fit a student into just about any situation, whether it be a single parent, a childless couple, a retired couple or a large family.

For the upcoming programs, P.I.E. has students from Spain, Germany, Yugoslavia, Italy, Argentina, Brazil, Colombia, New Zealand, France and other countries. P.I.E. is a non-profit educational organization that has sponsored more than 15,000 students from 18 countries since its founding in 1975.

Manchester area families interested in learning more about student exchange or arranging for a meeting may call P.I.E., toll-free, at 1-800-245-6232. The agency also has opportunities available for community volunteers.

School Lunch Menu
Monday, April 13: Chicken Patty on Bun, Tator Tots, Dill Pickles, Peach Half, Milk
Tuesday, April 14: Beef Ravioli, Mixed Vegetables, Bread & Butter, Applesauce, Milk
Wednesday, April 15: Chicken Noodle Soup with Crackers, Ham & Cheese Sandwich, Vegetable Sticks, Peach Crisp, Milk
Thursday, April 16: Baked Chicken, Rice/Gravy, Green Beans, Whole Wheat Bread, Fresh Fruit, Milk
Friday, April 17: Good Friday, No School



Beatty & Company
CERTIFIED PUBLIC ACCOUNTANTS
• Income Tax Preparation
• Financial Planning
• Accounting Services
147 W. Michigan Ave., Clinton
1-517-456-4887

STEVE WALZ Construction
Remodeling
Room Additions
Garages - Porches
CUSTOM BUILT CABINETS
CUSTOM BUILT HOME ON YOUR IMPROVED LOT CAN SAVE YOU \$\$\$\$\$\$
Phone 428-9355

FLAG POLES
For home and yard
WOOD, STEEL & ALUMINUM POLES
-ALSO-
U.S. & FOREIGN FLAGS
FOX TENT AWNING CO.
617 S. Ashley, Ann Arbor
(313) 665-9126

These cars need a new home!
GM Auction Cars

1991 Cadillac DeVille 4 dr. 10,600 miles	\$22,900
1991 Cadillac DeVille 4 dr. 12,000 miles	\$22,900
1991 Olds Calias 2-dr. 5,900 miles	\$ 9,495
1991 Cavalier Conv. 15,000 miles	\$12,900
1991 Olds 98 Elite 4 dr. 19,000 miles	\$17,900
1991 Buick Regal 4 dr. Custom 25,700 miles	\$13,900
1991 Buick Century 4 dr. 10,300 miles	\$11,900
1991 Olds Calais 4 dr. 9,400 miles	\$ 9,995

QUALITY USED CARS AND TRUCKS

1991 Chev S10 Pick Up	\$6,995
1989 Geo Tracker Conv.	\$7,195
1989 Buick LaSabre Limited 4 dr. 34,000 miles	\$10,500
1989 Ford Ranger Pick-up Ext. Cab XLT	\$7,995
1988 Chev Caprice 4 dr.	\$7,495
1988 Chev Suburban	\$9,295
1988 Dodge 1/2 ton pickup	\$5,995
1988 Chev Celebrity 4-dr.	\$3,995
1987 Ford 1 Ton Dump Box	\$9,995
1987 Chev Cavalier 2-dr. R.S.	\$3,495
1986 GMC S15 Pick up	\$3,995
1986 Mercury Grand Marquis LS	\$4,995
1986 Olds Delta 88 Royal 4-dr	\$3,995
1986 Ford Ranger Ext. Cab Pick-Up	\$3,995
1985 Chrysler 2 dr. Le Baron	\$2,995
1985 Chev. S10 Blazer w/ Snow Plow	\$3,995
1985 Buick Somerset 2dr.	\$3,495
1982 Chev Camaro Z28	\$3,895

used cars and trucks call:
John Popovich
Fred Klink or
Dave Dising
FAIST - MORROW
"Where the Quality Used Cars Are"
1500 S. Main St. Chelsea 475-8663
OPEN TIL 8:00 PM
Monday & Thursday
OPEN Saturday 9:00-3:00

PEOPLE & OCCASIONS



"Senor" Jeff Knasiak dons the latest in Spanish haberdashery as he tours Disney World in Orlando with the Manchester High School Band over spring break. Jeff was definitely a fun chaperone. Ole' Jeff!

The Manchester Band Boosters will meet Monday, April 13, 7:00 p.m. in the high school band room. We will discuss 5th-8th grade trip. Please attend!!

Lenawee YMCA Aerobics Manchester Middle School Cafeteria



Tuesday & Thursday 7:00 p.m. beginning April 14 6 Week Session 12 visits \$27, 6 visits \$13.50 Walk-ins \$3

For more information, Kim Mahrle 517-456-6171 evenings & weekends

(313) 428-8190

Sula Darlene Jeffers

ATTORNEY AT LAW 146 E. MAIN STREET P.O. BOX 625 MANCHESTER, MICHIGAN 48158

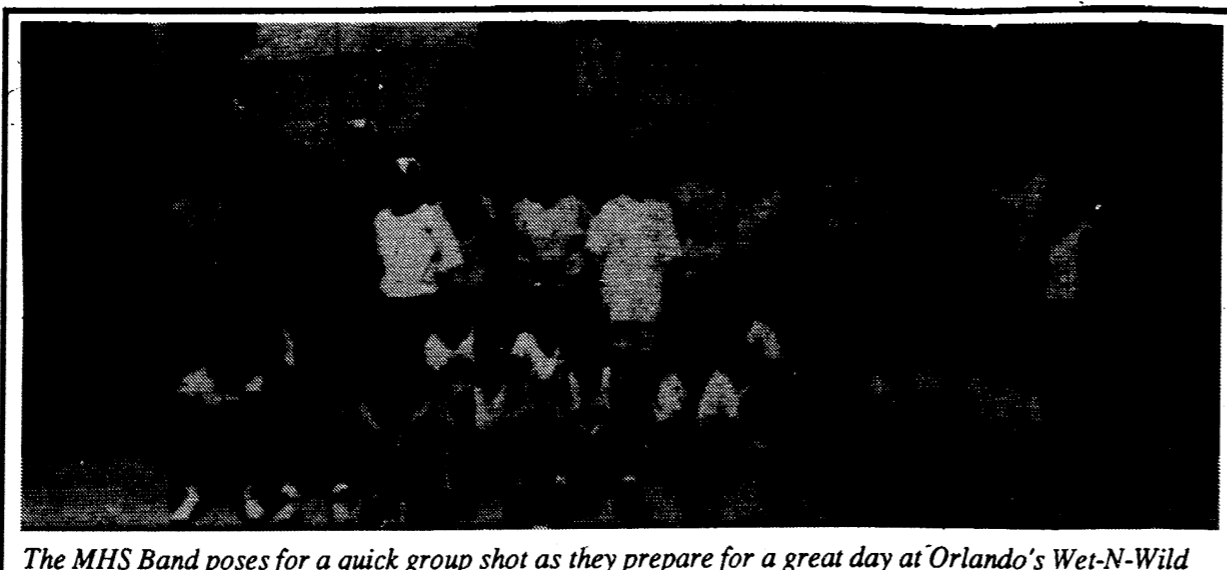
WE'RE NOW A BARBER SHOP TOO!

EVERY WEDNESDAY FROM 9-6, LISA BARKEL, A LICENSED BARBER, WILL BE HERE TO OFFER COMPLETE BARBER SERVICES.

And as always, Lisa Arnett, owner/stylist will be here the rest of the week, offering complete hair care for men, women & children.

456-7900

THE CUTTING EDGE 123 W. Michigan Ave. • Clinton Mon.-Fri. 9-6, Sat. 8:30-12



The MHS Band poses for a quick group shot as they prepare for a great day at Orlando's Wet-N-Wild Water Park. The group was in Florida March 27 through 31

MHS Band Invades Florida

Twenty-five members of the Manchester High School Band, accompanied by five chaperones, embarked on a whirlwind weekend trip to Florida over spring break.

Departing MHS at 5:00 p.m. on Thursday, March 26, the students spent 20 hours on a Cleveland Southern Trails Motorcoach and arrived in Tallahassee, Florida at 1:00 p.m. on Friday, March 27. The hotel pool — unheated and surprisingly chilly — was the natural first stop. The remainder of the day was spent relaxing and unwinding and enjoying a pizza party hosted by our hotel.

On Saturday, March 28, the entourage unpacked their band instruments for a special instructional clinic on the campus of Florida State University under the direction of Patrick Dunnigan. Mr. Dunnigan is the former instructor of our own MHS Director, Randall Riepmma. After a quick stop at the FSU bookstore, we were off on a five-hour trip for the south to Kissimmee, just outside Orlando.

We quickly settled into our hotel rooms and met, once again, at our bus for a trip to Old Town, a unique complex of specialty shops. Saturday night in Old Town is "Cruise Night" where local and not so local owners of antique cars and trucks compete for top honors. We were treated to a parade of over 150 vintage vehicles. Then it was back to our Hampton Inn for rest in anticipation of Sunday.

Disney World! Sunday, March 29, was our day to enjoy

the Magic Kingdom, celebrating its 20th anniversary this year. We all went our separate or small group ways in order to enjoy all the sights, shops, shows, and spectacular rides to the satisfaction of everyone. The first signs of tired teens were evident as we boarded our bus after 12 hours with Mickey Mouse and the wonderful Disney family. (Tired teens and sore feet!)

Our final day, Monday, March 30, was spent at the Wet-N-Wild Water theme park. Wave pools, water roller coasters, sun and fun were just the right com-

ination to end our great trip. Even a small shower in the afternoon didn't dampen spirits. We boarded our bus for the voyage home at 5:00 p.m. A sure indication of the success of our trip was the virtual silence as our students (and chaperones) snoozed for almost the entire 24 hour trip home, sleeping through Florida, Georgia, Tennessee, Kentucky, Ohio and finally to Michigan and Manchester.

P.S. If you happen to see a MHS Band student on the streets, just yell "Waffle House", they'll know what you mean!

An Old Fashion Chicken Dinner

As part of Manchester's 125 Year Celebration, the three chapters of Beta Sigma Phi Sorority are sponsoring an Old Fashion Chicken Dinner. It will be a family affair held after church. Dinner will be buffet style with chicken, potatoes, biscuits and gravy, vegetable, salad, dessert (ice cream sundaes) and beverage.

The date is April 26, 1992 from Noon until 3:00 P.M. at the American Legion Hall on Adrian Street.

The cost is \$6.00 for adults and \$3.00 for children 6-12 years old. Children 5 and under eat free.

A limited number of tickets are available at the Flower Garden until Wednesday, April 22, 1992. Sorry, no tickets will be sold at the door.

Hope to see you there to help celebrate Manchester's 125 Years!



SPRING... a time for change. The Brooklyn Living Center offers a comfortable, quality retirement option. Call today (517) 592-2828 or just drop in! Brooklyn Living Center 151 Constitution Avenue, Brooklyn, Michigan 49230 Ganton Retirement Centers Inc.

CHURCH NEWS

The Lenten Breakfast, sponsored by Church Women United, will be held at St. Mary's Catholic Church on April 15, at 9:30 a.m. in the church hall. Because of limited seating, reservations need to be made. This can be done by calling either Marja Warner, 428-9506 or Helen Wahl, 428-8886, no later than Friday, April 10.

CHURCH DIRECTORY



EMANUEL UNITED CHURCH OF CHRIST—Rev. Paul Kuntzman, Senior Pastor, Rev. Nancy Doty, Associate Pastor, Sunday School 9:00 a.m., Worship 10:30 a.m., 11:30 a.m. Coffee & Fellowship

MANCHESTER UNITED METHODIST CHURCH—Rev. Marsha Woolley, Pastor, 501 Ann Arbor St., P.O. Box 425, Manchester, Telephone: Parsonsage 428-8013, Church 428-8495, Sunday School 9:30 a.m., Worship 10:30 a.m., Church office hours—Tuesday, Wednesday and Thursday 8:00 a.m. until 11:00 a.m.

ST. MARY'S CATHOLIC CHURCH—Rev. Francis J. Murray, Pastor, Masses: Monday thru Wednesday, Friday 8:30 a.m., Thursday 7:00 p.m., Saturday 5:00 p.m., Sunday 8:30 a.m. and 11:00 a.m.

FAITH COMMUNITY CHURCH—Scott Engelman, Pastor, Mike Ostrander Youth Pastor, 8400 Sharon Hollow Rd. off W. Austin, Worship Service 10:00 a.m.; Sunday School 11:30 a.m., Sunday Evening Service 6:00 p.m.; LIFE-LINE 7:30 p.m.

VICTORY BAPTIST CHURCH—Rev. R. Dean Cooper, Pastor, 423 South Macomb, 428-7506, Sunday School 10:00 a.m.; Morning Worship 11:00 a.m.; Evening Public Bible Class 6:00 p.m.; Wednesday Praise and Prayer 7:00 p.m.

BETHEL UNITED CHURCH OF CHRIST—Rev. Roman A. Reineck, Pastor, Schneider and Bethel Church Roads, Church Service 9:30 a.m.; Sunday School 10:45 a.m.

SHARON UNITED METHODIST CHURCH—Rev. Peggy Paige, Pastor, Corner of M-52 and Pleasant Lake Roads, Church School 10:00 a.m., Worship 11:00 a.m., Phone 428-8430

ST. JOHN'S LUTHERAN CHURCH—Rev. Dennis A. Falk, Pastor, Austin Road, Bridgewater, Sunday School 9:15 a.m.; Worship 10:30

NORTH SHARON BAPTIST CHURCH—Bill Winiger, Pastor, Clifford W. J. Whitenburg, Assistant Pastor, Sylvan and Washburn Roads Sunday School 10:00 a.m.; Morning Church 11:00 a.m.; Evening Church 7:00 p.m.; Wednesday Bible Study 7:00 p.m.; Youth Meetings 7:00 p.m.

IRON CREEK COMMUNITY CHURCH—Tom Butterfield, Pastor, English and Sharon Hollow Roads, Sunday School 10:00 a.m., Morning Church 11:00 a.m., Sunday Evening 7:00 p.m.

ZION LUTHERAN CHURCH—Rev. Mark A. Weirauch, 3050 S. Fletcher Road, Telephone: Pastor 475-3481, Church Office 475-8064, Susan Wiley, Secretary 428-7268, Sunday School 9:00 a.m.; Worship Service with Holy Communion 10:15 a.m.

ST. THOMAS LUTHERAN CHURCH—Rev. John Riske, Pastor, 10001 W. Ellsworth Rd., (5 miles North and 8-1/2 East of Manchester), Schedule: Church Service 10:45 Sunday, Bible Class and Sunday School 9:30 a.m.

ST. JOHN'S UNITED CHURCH OF CHRIST—Rev. Nancy Doty, Pastor, 12376 Waters Road, Waters and Fletcher Roads, Rogers Corners, Worship and Sunday School 9:00 a.m.

CLINTON ASSEMBLY OF GOD—Rev. Richard Coury, Pastor, Chris Bouldrey, Youth Pastor, 13300 Clinton-Manchester Road, Clinton; Sunday School 9:30 a.m.; Worship 10:45 a.m.; Sunday Evening 6:30 p.m.; Wednesday Prayer, Bible Study, Youth 7:00 p.m.

CHURCH OF JESUS CHRIST OF LATTER DAY SAINTS (MORMONS)—Samuel M. Skidmore, Branch President, 1330 Freer Road, Chelsea; Sacramento 9:30 a.m.; Sunday School, Primary 10:40 a.m.; Priesthood Relief Society, Aaronic Priesthood, Youth 11:40 a.m. For more information call 517-456-7876.

CHELSEA FULL GOSPEL CHURCH—John and Sarah Groesser, Pastors, 11452 Jackson Road (Lima Town Hall) 313-475-7379; Sunday 10:15 a.m. Prayer, 11:00 Morning Worship Service, 6:00 Evening Worship Service, Wednesday 7:00 p.m. Church School, all ages (call for location)

ST. THOMAS LUTHERAN CHURCH Wednesday, April 8: 8pm Mid-week Lenten Worship at St. John's

Saturday, April 11: 7:30pm Eucharist Card Party at Bethel Sunday, April 12: Palm Sunday 9:30am Sunday School, 10:45 Worship

Thursday, April 16: 8pm Maundy Thursday worship Service Friday, April 17: 1:30pm Good Friday Worship Service

EMANUEL UNITED CHURCH OF CHRIST Wednesday, April 8: 6pm Bell Choir, 7:30 Adult Choir, Set up for Kraut Supper

Thursday, April 9: No Senior Meal, 3:20 Children's Choirs, 5:15 Weight Watchers, 5pm Sauerkraut Supper

Saturday, April 11: 9:30am Co-Op Board Mtg.

Sunday, April 12: 9am Sunday School, 10:30 Palm Sunday Worship, 11:30 Coffee & Fellowship, 11:30 Parish/Pastoral Relations and Music Committees

Monday, April 13: 3:15 Cub Scouts, 6:30 Optimists, 7pm Golf Meeting, 8pm Fair Board

Tuesday, April 14: 12 Noon Senior Meal, 7pm Boy Scouts, Wednesday, April 15: 9:30am Women's Lenten Breakfast in St. Mary's Hall

Thursday, April 16: 12 Noon Sr Meal, 5:15 Weight Watchers, 7pm Maundy Thursday Seder Meal, Communion in Fellowship Hall

Friday, April 17: 1:30pm Good Friday Community Worship at Emanuel

MANCHESTER UNITED METHODIST CHURCH Wednesday, April 8: 1pm Willo Circle, 6:30 Lenten Supper & Worship

Thursday, April 9: 5pm Girl Scouts, 7pm Choir Practice

Friday, April 10: 9:45 Bible Study Sunday, April 12: 9:30am Sunday School, 10:30 Worship, 11:30 Coffee/Fellowship Hour,

Monday, April 13: 6-7:30pm Girl Scouts

Tuesday, April 14: 10am Lydia Circle

Wednesday, April 15: 9:30am Lenten Breakfast at St. Mary's, 1pm U.M.W.

Thursday, April 16: 6:30pm Maundy Thursday Simple Meal & Worship with Communion

Friday, April 17: 1:30pm Good Friday Worship at Emanuel Church

SHARON UNITED METHODIST CHURCH Wednesday, April 8: 8pm Lenten Service at Sharon Church,

Rev. James Paige, pastor Salem Grove United Methodist Church, will be the guest speaker.

ST. MARY'S CATHOLIC CHURCH Every Friday until April 17: K of C Fish, Shrimp and Salad Bar Dinner, 5 to 8pm

Holy Week Services - Sacrament of Penance, Thursday, April 9: Group Preparation 7:30pm

April 10-12: Spiritual week-end, phone for information John Conley 517-536-8385 or Betty Wallace 517-788-6503

Saturday, April 11: Individual Preparation 11:30am-12 noon & 4-4:45pm

Tuesday, April 14: Individual Preparation 11:30am-12 noon, 4-4:45pm & 7-8pm

Holy Week Liturgies: Thursday, April 16: Mass of Lord's Supper 7:30pm

Friday, April 17: Celebration of Lord's Passion 1pm

BETHEL UNITED CHURCH OF CHRIST Wednesday, April 8: 6:15pm Pot Luck Supper, 7:30 Lenten Worship Service

Thursday, April 9: 6:15 Children's Choir, 7:15 Youth Choir Plus

Saturday, April 11: 8:30am Confirmation Class, 7:30 Rural Churches Euchre at Bethel

Sunday, April 12: 9:30am Palm/Passion Sunday Worship Service with Reception of members and Baptism, 10:45 Church School Lenten Workshop-ALL COME!

Wednesday, April 15: 9:30am Lenten Breakfast at St. Mary's, 11:30 Seniors of Bethel meet, 7:30 Youth Choir Plus

Thursday, April 16: Maundy Thursday, 7:30pm Worship Service Altar Communion-Tenebrae Service

Friday, April 17: Good Friday 1:30 Community Service at Emanuel UCC

ZION LUTHERAN CHURCH Wednesday, April 8: 6:15 Lenten Meal, 7:30 Lenten Service Senior Choir

Thursday, April 9: 7:30pm Old Church Board

Saturday, April 11: 9-12am Catechism, 9am Church Grounds Clean-up Party

Sunday, April 12: 9am Inquirer's Class, 9am Sunday School, 10:15 Worship Joymakers

Monday, April 13: 8pm Property Committee

Tuesday, April 14: 7:30pm Shuffleboard

Thursday, April 16: 1:30pm Communion Service, 7:30pm Communion Service

Friday, April 17: 1:30pm Good Friday Service, 7:30pm Service of Tenebrae



PALM SUNDAY

Come to The Emanuel Church Annual Easter Egg, Candy & Coffee Cake Sale

Saturday, April 18, 1992 9am to 12 noon

Sutton Insurance Agency, Manchester



Notice

The Oak Grove Cemetery Association will increase the price of grave lots from \$250.00 to \$300.00 effective May 1, 1992.

Notice

All Grave blankets and Christmas Decorations must be removed by April 10, 1992, or they will be disposed of. Oak Grove Cemetery Association

THIS CHURCH PAGE IS BROUGHT TO YOU THROUGH THE FOLLOWING SPONSORS

Table with 5 columns of church sponsors: GEORGE & MABLE MACOMBER, DAN'S WESTSIDE AUTOMOTIVE, EVELYN ECCLES, VIRGINIA JOHNSON M. D. S, MANCHESTER CAR WASH, Keith's Barber Shop, ALBERS ORCHARDS, KLEINSCHMIDT TRUE VALUE HARDWARE, WACKER'S GENERAL STORE, MANCHESTER MEN'S CLUB, Norm & Olga Walz, S-K Sales, Inc., D. E. LIMPERT COMPANY, Schebor's Greenhouse, JENTER - BRAUN FUNERAL HOME, BROOKLYN LIVING CENTER, HAARER'S MEETING PLACE, THE MANCHESTER ENTERPRISE, Baker's Dozen, GENE & GERTRUDE SMITH PINNACLE ENGR.

COMMUNITY NEWS

Blue Lake's Musical Ambassadors Prepare for European Tour

Blue Lake Fine Arts Camp in Twin Lake, MI, will send four music groups to Europe this summer as part of its 23rd Annual International Exchange Program.

In return, 16 European groups are expected to visit Michigan during 1992, according to Mrs. Gretchen Stansell, Director of Blue Lake International.

Mrs. Stansell said 275 talented high school musicians from Michigan and eight other states will visit Germany, France, Belgium, Holland, Denmark and Sweden for one month during June and July.

Jennifer Nobsch, a student at Manchester High School, who is a member of the tenor sax section in the band, has been selected to participate.

The 275 participants in Blue Lake's 1992 International Exchange Program were selected from more than 1,000 students who were auditioned while attending Blue Lake last summer.

Established in 1966, Blue Lake is one of the largest summer arts camps in the U.S. To-

day the International Exchange Program is one of the oldest and largest goodwill programs of its kind in the U.S.

While on tour, Blue Lake's musical ambassadors stay in the homes of the host families, giving them a first-hand view of the life style and culture of the countries they visit. European and Asian groups do the same while touring Michigan.

Manchester Stamping Corp. Receives 1992 Honda Supplier Award

Honda of America Mfg. recognized 66 of its North American suppliers by presenting awards for outstanding achievement in areas of quality, delivery, productivity and production support at its 10th annual supplier conference.

Manchester Stamping won an award for quality at that conference. Qualifications for the award included parts rejects of less than 80 parts per million.

Slogan Contest Reminder

—Sybil Kolon

On April 22nd, Earth Day, the public will have the opportunity to vote on the best slogan entries to promote new recycling programs. The Western Washtenaw Recycling Authority is sponsoring the slogan contest which has a first place prize of \$50. Entries are due by April 16th.

Everyone is being encouraged to put their minds to work to come up with a general slogan, one that could apply to a specific material, promote proper preparation, curbside or drop-off recycling, etc. Put your creativity to work for a good cause.

Educational materials will be prepared soon and it is hoped that one or more slogans could be incorporated in them.

Entry forms and rules are available in the Manchester area at Walco Foods, Wacker's, Bridgewater Bank and the Village Office. In the Chelsea area at Polly's, North Lake Country Store, Cavanaugh Lake Store and the Village Office. Entries can be submitted at the same location or mailed to the Village of Chelsea, 104 E. Middle St. 48118.

MARCC MEETING

The Manchester Area Resource Conservation Coalition is holding its next meeting on April 15, 7:30 PM at the Blacksmith Shop, 324 E. Main St.

The major topic will be continued planning for the River Raisin Festival to be held on May 16 and 17. Lots of fun and interesting things are lined up, but many details have to be finalized and volunteers will be needed on that weekend. Where would we be without the river?

Three contests are focusing on the River Raisin. Essay contest entries are due on April 17. Photo contest entries are due from April 24 to May 1. Fine tune your raisin recipes for the bake off contest on May 16. Rules and entry forms are available at Pyramid Office Supply, Krauss's Pharmacy, Jon's Photo Shop and Great Lakes Bancorp.

Manchester Area Land Trust— Will meet on Tuesday, April 14 at 7:30 in the Blacksmith Shop on E. Main. We will be changing our name to the Raisin Valley Land Trust.

One of our current issues is finding environmentally concerned people to serve on the board of directors. There will be a report on the recent Michigan Land Trust conference held recently in E. Lansing.

We urge all to attend who want to know more about preserving rural land.

—Woody Kellum

The Out Of Bounders Golf League will meet Monday, April 13 at Emanuel Church, 7pm. Anyone interested in golfing should attend or call 517-536-4574 or 428-7866.

Obituaries

Erwin T. Blumenauer Manchester

Age 74, passed away at his home on April 4, 1992. Erwin was born in Sharon Township, MI on September 17, 1917, the son of Theodore and Bertha (Ernst) Blumenauer. On March 4, 1939, he was married to Thelma Blasdell and she survives. Erwin retired from Ford Motor Co. after 39 years of loyal service. He was a member of Emanuel United Church of Christ and a Life Member of the Masonic Blue Lodge #148 of Manchester. He was one of the Charter members of the Manchester Sportsman Club and a member of the N.R.A. Erwin loved to hunt and fish and enjoyed making homemade wine. Erwin is also survived by sons Theodore and Delora of Dumont, Colorado, Tim and Barbara of Tecumseh, and Douglas and Barbara of Adrian; daughters Patricia Susan Martin of Goose Bay, Labrador, Canada, Debrah and Dwight Swain of Ann Arbor; 13 grandchildren and five great-grandchildren; brothers Walter and Willard; sister Doris and Robert Eisenhauer, all of Manchester. Erwin was preceded in death by his parents, one son in infancy, one granddaughter.

Thomas V. Iwanicki Clinton

Age 73, of Michigan Avenue, Clinton, died at Herrick Memorial Health Care Center in Tecumseh on Saturday, April 4, 1992. He was born on March 5, 1919 in Cleveland, Ohio. On December 1, 1945, he married Cora P. Dayss, and she survives. He had lived in the Clinton area for the past 46 years and was a life member of St. Dominic Catholic Church in Clinton. He was employed as a Millwright at Ford Motor Co., Rawsonville Plant, retiring in 1984.

Besides his wife Cora of Clinton, he is survived by two sons, Mark (Randy) and Kevin Iwanicki, both of Clinton. One sister, Eleanor Ball of Manchester and two grandchildren, Scott and Ryan.

A memorial mass will be held on Thursday, April 9 at St. Dominic's in Clinton at 11:00 a.m. with Rev. Fr. Donald Rusch officiating. There will be no visitation. Arrangements were made by the Couture-Ochalek Funeral Home in Clinton.

McLennan Landscape

A personalized professional service

- Design Consultation
- Plant Installation
- Retaining Walls
- Wild Flowers
- Finish Grading
- Rototilling
- Hydro Seeding
- Brick Pathways

(313) 428-7005

We Can Help You Make Your House Look NEW Again..... Call Us Today

Roofing, Siding, Seamless Aluminum Gutters, Insulation, Replacement Windows

20th Anniversary 1972 - 1992

FREE ESTIMATES

19860 Sharon Valley Road Manchester Corner of M-52

R.D. Kleinschmidt, Inc.

We Build Our Reputation Around Your Home

428-8836

COMMUNITY NEWS



MANCHESTER TOWNSHIP LIBRARY

202 West Main Street
Manchester, MI 48158
Phone 313-428-8045
Hours: Monday & Wednesday 12-9
Tuesday, Thursday, Friday 12-5
Saturday 10-2

Looking for a new favorite book to while away those last few weeks of winter weather? Something to take outside during the first few weeks of spring weather? You need look no further than your local Manchester Township Library.

For the past several months, a poster and pens have been available to patrons who wished to "Read the Writing on the Wall" at the library. All were invited to write down the titles, authors and other interesting tidbits about the books we have been reading. The display has now been dismantled, but in case

you were wondering what to read...

For Children:

Imogene's Antlers was one of Rachel Fleck's favorite books. Sharon Bettig recommends *Little Black Sambo* to her co-readers. "My favorite is *The Celery Stalks at Midnight*" was Kristen Taddonio's comment. Other, unsigned readers were taken with *Pretty Good Magic*, *The Car in the Hat*, and *The Cat in the Hat Comes Back*, *More and More Dinosaurs*, and *More, More, Said the Baby*.

For Juvenile Readers:

Tales of a Fourth Grade Nothing, *Aesop's Fables*, and *The Mystery of the Wax Queen* were all listed as favorites with this age group. May young readers enjoyed the *Little House* books, *Baby-Sitters' Club* and *Baby-Sitters' Little Sister* stories, and the books of Beverly Cleary and Judy Blume. Megan Wilson, Rachel Jefferson, Jill LaRocque, and Jennifer Manwaring were some of the prolific readers in this category.

Young Adult Readers:

Simone Kolleck is a big fan of Christopher Pike mysteries! SCARY! was one of her comments about *Chain Letter*, one of Pike's popular thrillers. Other Young Adult authors who are widely read are R.L. Stine, Madeleine L'Engle, and Francine Pascal (creator of the Sweet Valley series). Our Young Adult section is growing rapidly. Middle school and high school readers should check out this collection, including *Maniac Magee*, the 1991 Newberry Medal winner.

Grown-ups too, recommended many interesting titles, although they weren't as free with their names as with the names of their favorite books. Adult fiction is always popular at the library and we had many recommendations for Dean Koontz' books, Stephen King, and Clive Cussler. Titles recommended were *Scarlett*, by Alexandra Ripley, *Silence of the Lambs* by Thomas Harris ("Black Coffee and Late Nights!" was Mark Rhodes' comment), and *Love in the time of Cholera* by Gabriel Garcia-Marquez. Science fiction is another highly suggested category, with David Eddings and Robert Asprin leading the way as favored authors.

Do you have a favorite that didn't make our list? Stop in at the library and let us know.

Human beings can alter their lives by altering their attitudes

—William James

YOUR HOME OFFICE STORE

Over 20 different styles of desks available!

Was \$1599 NOW ONLY \$1199

54"Wx29"Dx49"H

COMPUTER ROLLTOP

All desks feature: U.S. Northern Red Oak, U.S. Accuride® slides, exposed dove-tailed drawer joints made with finished hardwoods, felt lined pencil drawers with oak pencil tray, canvas backed solid oak tambours, and so much more.

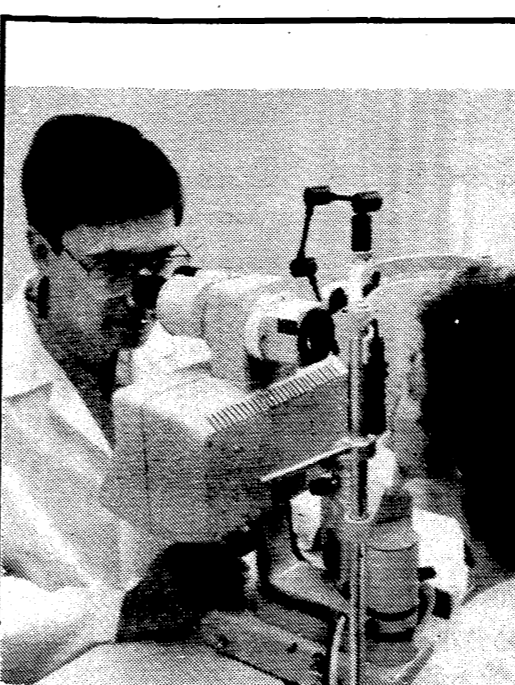
ROLL TOP DESKS FROM \$299
FLAT TOP DESKS FROM \$399
OAK FILING CABINETS FROM \$199
OAK OFFICE CHAIRS FROM \$189

FREE SETUP & DELIVERY

Tenpenny's OAK & CHERRY FURNITURE

Open Daily 10-9; Sun. 12-5

112 E. Michigan Ave., Clinton 456-7445



ANTHONY M. SENSOLI, MD
Eye Physician and Surgeon

- State-of-the-art surgical services
- Cataract implant and laser surgery
- Glaucoma laser surgery
- Evening office hours
- Comprehensive eye exams

APPOINTMENTS AND INFORMATION
313/475-5970

Middle Square Professional Building
134 W. Middle St., Chelsea

Fire Runs

- March 28, 07:52 — Grass Fire on English Road in Manchester Township
- March 31, 09:53 — Structure fire, house trailer, Sharon Hollow and Grass Lake Roads, Sharon Township, seven dogs and two cats died
- March 31, 08:41 — Medical, in the Village

How to Save Money by Recycling in Western Washtenaw County Townships

—Sybil Kolon

Most trash haulers have a flat rate for unlimited, weekly trash pick-up which can exceed \$200 per year. A few offer incentives to people who have less trash, which includes recyclers. By taking advantage of these incentives or hauling your trash to the Chelsea Landfill or the Manchester Transfer Station a significant savings can be realized.

CURRENT RECYCLING OPPORTUNITIES

Dexter, Lima, Lyndon and Sylvan township residents can take their glass, tin cans, newsprint, milk jugs and cardboard to the recycling bins at the Chelsea Landfill during regular hours.

Bridgewater, Freedom, Manchester and Sharon township residents can take their glass, tin cans, newsprint and milk jugs to the recycling bins located outside of Walco Foods on West Main Street in Manchester 24 hours a day.

Dyer's Auto Parts 17547 W. Austin Rd., Manchester Twp. accepts used appliances (refrigerator doors must be removed) and other scrap metal at no charge.

Additional materials are accepted from anyone by Recycle Ann Arbor (971-7400) or Recycling & Resource Recovery in Adrian (517-264-5545).

Please follow preparation guidelines for recyclables.

CHELSEA LANDFILL 8027 Werkner Rd., Lyndon Twp. Tue, Thur, Fri - 1 2 p.m. to 4:30 p.m.

Sat. - 9 a.m. to 4 p.m.

Serves the Village of Chelsea and Dexter, Lima, Lyndon and Sylvan townships only.

Minimum charge of \$6 for up to six bags of trash, \$1 for each additional bag. The minimum does not apply to people who bring material to recycle at the same time. They will be charged \$1 per bag of trash and recyclables are free.

Pick-up truck of trash \$13.50, \$6 for each additional foot above the sides.

Appliances \$10. Tires \$2.50 each.

MANCHESTER TRANSFER STATION 20601 Gieske Rd., Manchester Twp.

Winter Hours Sat. 8 a.m. to 5 p.m.

Serves the Village of Manchester and Bridgewater, Freedom, Manchester and Sharon townships only.

Three bags of trash \$3.50. Car load \$6.50. Trailer/van \$10.50. Pick-up truck \$20. Heaped pick-up \$22. Appliance \$10. Tires \$6 each.

TRASH HAULERS WITH LOWER RATES FOR LESS TRASH:

BFI: 1-800-968-6679

Serves Lyndon, Sylvan, Sharon and Manchester west of M-52, the southwest portion of Freedom and western portion of Bridgewater.

•Regular unlimited rate, \$20/month (\$240/year); or \$13.50/month for up to three 30 gallon bags (\$162/year); or also has a by the bag program for \$2 per 30 gallon bag.

Mr. Rubbish: 1-313-971-7490

Serves Lyndon, Sylvan, Dexter and Lima and the northern portions of Sharon and Freedom.

•Regular unlimited rate, \$21 per month (\$252/year); or has a by the bag program for \$1.80 per 30 gallon bag.

Mr. D's Container Service: 1-517-764-1181

Serves most of Manchester and Sharon Townships

•Regular unlimited rate of \$16/month (\$192/year); or has a by the bag program for \$3 per 20 gallon bag.

TRASH REDUCTION CAN SAVE MONEY:

By recycling, composting and avoiding products with unnecessary packaging, a family which produces two bags of trash a week can easily save \$32 to \$58 per year with a by the bag program. By taking trash to the transfer station or landfill the same family could save \$120 to \$150 per year.

(Prepared by the Western Washtenaw Recycling Authority. For more information, call your local officials or 428-8108 or 475-9491.

GREAT #1 TIRB CHEVY DEALER

TIRB CHEVROLET & GEO

A Good Selection of New and Used Cars On Our Lot

Phone 313-428-8212 or 313-428-8492
131 ADRIAN STREET MANCHESTER, MICHIGAN

FEEL BETTER ABOUT YOUR HOME WITH LANDSCAPING

From **Underwood's Nursery**

We at Underwood Nursery specialize in:

- *Large Selection of Trees & Shrubs and Dwarf Conifers
- *Landscape Installation & Design
- *Evergreen & Shrub Trimming
- *Tree Transplanting
- *Stump Removal
- *Brick Patio and Walks
- *Hydro-Mulch Seeding
- *Lawn & Tree Spraying

Underwood's Nursery & Landscape Services

4373 North Adrian Highway (M-52)
Adrian, Michigan 49221
(517) 265-2481

Senior Citizens News

These days we often speak of going to Ann Arbor for this or that or going to Lansing for one reason or other. Well, this week Lansing came to Manchester, for a switch.

The other day my phone rang and Tom Jackson, our contact person for bus affairs in the Michigan Department of Transportation in Lansing, was on the other end of the horn. "Would I be home at 1:00 and could he stop by to discuss some business with me". One always answers "yes" to that sort of request. But I was apprehensive—was he going to tell me that something was wrong with our bus grant applications which are in his hands?

He found us with no difficulty and my fears soon proved groundless. All he wanted was to go over color selections for our new bus. He thought that doing it in person would be quicker than mail and would expedite ordering and delivery of our new bus. We were able to select colors quickly and get the forms signed. He was soon on his way to Lansing via M-52, the scenic route, he said.

I was tempted to keep this meeting a secret. Then when the bus got here and someone complained about colors, I could blame it on the "state bureau-

crats". But, I couldn't keep still and announced it at the next meal.

I just told them what the colors were to be and didn't go into the problems I had picking them. Earlier discussions at the bakery had not solved the problem of color selection. In fact, I left there with an impasse on my hands. Ted Tapping wanted a maize and blue bus to off-set the years he had had to put up with green and white on our last two buses. Ron Jenter thought the present bus was just fine and green and white in new paint would look even better on the new one. How could I compromise? Finally I came up with the idea of picking a neutral school of some distinction that had colors I could use.

I had always liked the tan, blue and white we had on the bus that burned. Slippery Rock Teachers College in Pennsylvania has those colors, well they don't have white, but they do have blue and tan. I couldn't use white anyway because some would associate it with MSU. So we are going to have a bus that looks a lot like our last new one. Ray Gonyer did a good job on that one and I hope our new one will be received just as well as that one was. Ray told me that bus was delivered about one

month after he selected the colors. I don't believe ours will come that fast even though we have so many computers to "speed things up" today. We'll see. Mike Minor says he'll believe a new bus when he sees it and can drive it. On to the schedule of events we should be talking about in this week's paper. We have no meal on April 9th so Emanuel can set up for their Sauerkraut Supper that evening. If enough folks sign up for our bus, it will be scheduled to bring them in for the 5:00 serving. Call Erma, (428-8707).

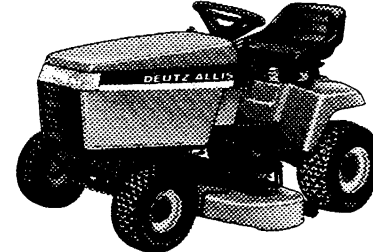
Friday, April 10th, the bus leaves the Center at 10:00 for Turkeyville and a turkey dinner followed by the theater presentation "42nd and Broadway". The bus is full for this popular event, but standbys can be ready to fill in for someone who might not be able to go that day. Call Erma.

On Saturday the bus leaves the Center at 8:00 a.m. for Health-O-Rama in Chelsea. Saturday night pick up starts at 6:15 p.m. for Fun Night at Bethel United Church of Christ. Call Erma.

Tuesday, April 14th our monthly Council meeting starts at 9:30 at the Center. Any and all are welcome to come look over the shoulders of those currently elected to serve in your Council. Following the Council meeting the calendar committee will go to work on the new issue. Noon will find us at the dining room eating Jan's veal cutlets. Then at 5:30 p.m. the bus starts pick up for the Travelogue in Tecumseh. Call Erma, 428-8707, for bus information or reservations.

DEUTZ-ALLIS LAWN & GARDEN EQUIPMENT

Lawn & Garden Equipment/Service



- * Lawn & Garden Tractors
- * Riding Mowers
- * Snow Throwers
- * Parts & Accessories for Deutz - Allis, Allis - Chalmers, and Simplicity units
- * Pick-up & Delivery Available

DIUBLE FEEDS INC. 4441 Parker Road Ann Arbor, Mi. 313-994-1313

Open Mon. - Fri. 8 - 5 Sat. 8 - 4 Minutes from Manchester

Manchester is Gearing Up for Christmas in April @ Day, April 25, 1992

Five households in the Manchester area have been selected to participate in the first Christmas In April@ Wash-taw program for the Manchester area. The work to be done on these homes ranges from yard clean-up and window washing to more extensive work such as plumbing repairs, electrical work and painting.

"This is a great opportunity for the people of Manchester to work together to help the elderly and handicapped citizens of our community with basic household maintenance," says Dianne Schwab, director of the Community Resource Center and member of the Manchester Christmas In April committee.

Mrs. Schwab stated, "We already have about 30 adult volunteers and 10 to 15 volunteers from the High School, but we would like to get more of the community involved in this worthwhile project. We still need volunteers to help with all aspects of the program."

"All volunteers that work on the Christmas In April project will receive a Christmas In April T-Shirt and an invitation to a volunteer picnic at Carr Park at the end of the work day to thank them for all of their hard work," noted Mrs. Schwab.

Anyone interested in volunteering or donating funds or services is urged to contact Dianne Schwab at 428-7722 as soon as possible to be included in this significant community activity. Volunteer forms can be picked

Birth Announcement

Kathryn Stahly Brown

Born at home Tuesday, March 31, 1992 at 9:05 p.m., six pounds, 14 ounces.

PARR'S AUTO BODY BODY WORK - PAINTING FREE ESTIMATES INSURANCE WORK GLASS INSTALLATION 18481 W. Austin Road Manchester, Michigan Phone 313-428-9538

313-429-4885 COUPON 517-423-2148

Saline in the Saline Shopping Center

1ST OPTOMETRY

\$99 Daily Wear Soft Contact Lenses

Dr. Thomas Cunningham

eye care centers (with coupon)

Prescription Eyeglasses

DOES NOT APPLY TO OTHER DISCOUNT OFFERS OR PRIOR ORDERS

HEALTH-O-RAMA

FREE HEALTH SCREENINGS available at

Chelsea Community Hospital 775 South Main (main entrance) Chelsea, Michigan 48118

APRIL 11 — 9 a.m. - 1 p.m.

- BLOOD PANEL CHEMISTRY (4 hour fasting preferred, \$11 charge)
- BLOOD PRESSURE (wear loose clothing)
- BODY FAT COMPOSITION (\$5 charge)
- COLOR-RECTAL KIT (\$4 charge)
- GLAUCOMA SCREENING (Drs. William Hawks, Lou Ann Kiestling, Anthony Sensol)
- HEALTH SCREENING SUMMARY and COUNSELING (U of M Family Practice Center, Drs. Diane Howlin, Doug Portz, Steve Yarows, John Zettelmair)
- HEARING
- HEIGHT/WEIGHT
- MEDICATION COUNSELING
- NUTRITION COUNSELING
- ORAL/DENTAL SCREENING (Drs. Mary Bartley, Bruce Satas, Raymond Howe, Lindsey McClellan, David Swan, Clare Warren)
- PAP SMEAR (\$10 charge) (Fran Beckley, R.N., Nurse Practitioner)
- PODIATRY SCREENING (Dr. Howard Reznick)
- PROSTATE/TESTICULAR EXAM (Drs. Howard Ustalo, Leonard Wolin)
- PULMONARY FUNCTION TESTING
- SKIN CANCER TESTING (Dr. Charles Ellis)
- VISION TESTING

Screenings are available to anyone 18 years or older. No advanced registration is required. Health screenings do not take the place of your annual visit to your physician.

FOR FURTHER INFORMATION CALL 475-3935

River Raisin's History Filled With Dirt — Part Eight

The Manchester Area Resource Conservation Coalition (MARCC), as part of the River Raisin Festival May 16 & 17 has investigated when the state Water Resources Commission identified pollution in the River Raisin as a problem that needed correcting. In 1951, the village of Manchester was ordered to construct a sewage treatment plant. By 1956, the village had been taken to court-over the matter, and lost.

Last week, the first part of an article was printed that appeared originally in the Manchester Enterprise on March 15, 1956, explaining why a sewage treatment system would benefit the village.

The article continues below: "A Discussion on the Need of Sewage Treatment Sewers are underground

conduits that carry swag (sic) to the disposal sewers, carry household or industrial waste only (and) they are called 'Separate Sewers.' Those carrying storm waters from roofs and streets and more lately from air-conditioning units are known as Storm Water drains, while those carrying both sewage and storm water are called Combination Sewers. The building connection (sometimes called house sewers) connects the house sewers with plumbing and drainage system to the Lateral Sewer in the street. The Laterals discharge into Submains or Main Sewers which in turn discharge into Trunk Sewers or out fall Sewers and carry sewage to the point of disposal. The Village of Manchester at present has only storm water sewers. Some septic tank overflow is carried by these storm sewers.

In general, practically all sewage in Manchester is treated in septic tanks. Sewage passing through a septic tank drops nearly all of the solids coming from the plumbing fixtures but sewage treatment in septic tanks at its best is only fifty percent effective. The dissolved impurities in sewage are carried over into the filter or disposal bed. In the filter field or disposal bed the final purification takes place under ideal conditions but ideal conditions do not last indefinitely. As the dissolved solids are converted into a solid form of bacterial action, these solids coat the grains of sand, stone and earth with a slime which eventually fills all the spaces and actually plugs up the space, through which the water passes into the ground and from that point on, the septic tank fills up and begins to back up into the

surface of the ground and forms a smelly mess, also if the septic tank discharge should empty too near an adjacent water well, the partially treated sewage may seep into the water supply and contaminate it. This is not true in Manchester because the village has a Municipal Water system. When a septic tank filter bed becomes clogged the problem may be solved by extending the filter bed but in the case of a small house lot this is not possible, the only alternative is to excavate the area and replace the gravel and then relay the tile. This is a costly operation for the average homeowner. It is true that under certain conditions a septic tank filter will last for ten

or fifteen years or longer without any trouble but it may also be only five years or even less. In any event, a septic tank is bound to eventually give trouble."

(Second part of Manchester Enterprise article ends.)

In the next edition, the article concludes with information on the proposed sewer system for Manchester and where it could be located.

Beard Contest Entries still being accepted at Keith's Barbershop.

Manchester Music and Memories

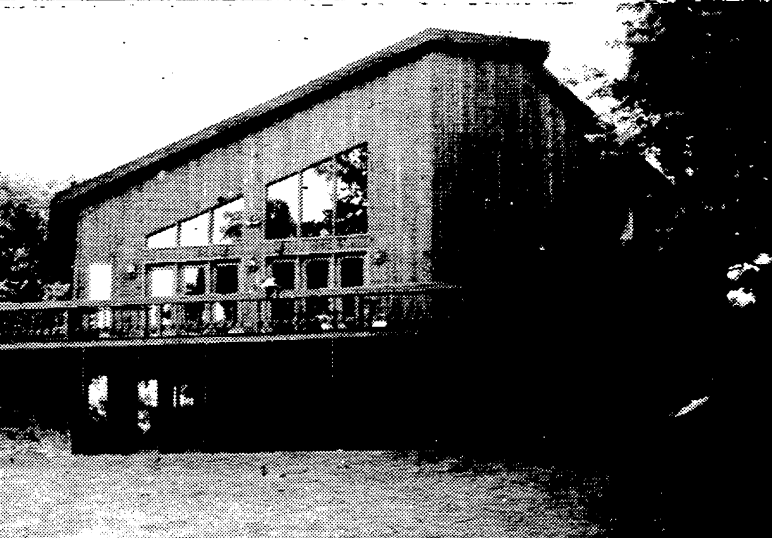
In recognition of the 125th anniversary of the founding of Manchester, the Manchester Recreation Task Force invites you to attend a special evening of "Manchester Music and Memories". This event will include presentations by community members, local musicians, and historians, all sharing their memories and impressions of Manchester. Families and friends are welcomed to attend this free event. "Manchester Music and Memories" will take place on Tuesday evening, April 28, at 7:30 p.m. in Emanuel Church, 324 W. Main, in Manchester.

The entire event will be a collaborative effort with members of the community contributing poems, prose, historical highlights, songs, memoirs and memories, all honoring our town and its people. These presentations will paint a portrait reflecting the personality of our community.

Some community members will provide historical highlights from our past, while others may share a more personal memory of our town. Come learn a little about our Library, the Mill, and the old cement factory on the edge of town.

Some presenters will put their impressions into music. The Manchester Community Band, directed by Mark Miller, will be sharing their musical impressions of Manchester. Other musicians will perform vocal and instrumental pieces spanning the last 125 years of our history, from civil war ballads to contemporary compositions.

For additional information, come to the Recreation Task Force Meeting on Wednesday, April 8, 7:30 p.m. at the Blacksmith Shop, or contact Bill Farmer at 428-9257. This evening will be a nice way to learn about, and perhaps even sing about, your town. So save April 28 for "Manchester Music and Memories".



5,000 plus Square Feet Contemporary — Traditional Elegance,

27' High Great Room with Copper, Stone & Oak Fireplace, California Room with Sauna and Hot Tub, 18 plus Rooms. Overlooking Private Lake, 3 Car Garage, Underground Sprinkling System

642 Wald Strasse, Manchester

PRICE REDUCED \$335,000

ABRAHAM - LINEHAN REALTY 1893 W. Maumee, Adrian MI. 49221 517-265-2164 Ask for "Dick"

Schebor's Greenhouse

14345 Logan Road, Manchester, MI 428-8078

Easter Plants

Easter Lilies, Hybrid Lilies, Azaleas, Hydrangeas, Mums, and more

Open Mon-Sat 10-6 Sunday 10-5

K of C FISH & SHRIMP DINNERS AND SALAD BAR AllYouCanEat!

\$7.00 SENIOR CITIZENS \$6.00

Childrens Portions: Ages 10 - 12 \$4.50 6 - 9 \$3.00 5 & under free Milk & Coffee Included Pop \$.75

Friday Nights thru April 17, 1992 5 p.m. - 8 p.m.

Manchester K of C Hall

MOONLIGHT MADNESS

THURS - APR 9 - 7 TO 9:30 P.M.

20% OFF ALL MERCHANDISE IN STOCK *

* RED WING BOOTS & VARSITY JACKETS NOT INCLUDED IN THIS SALE

We will be CLOSED from 3:00 to 7:00 P.M.

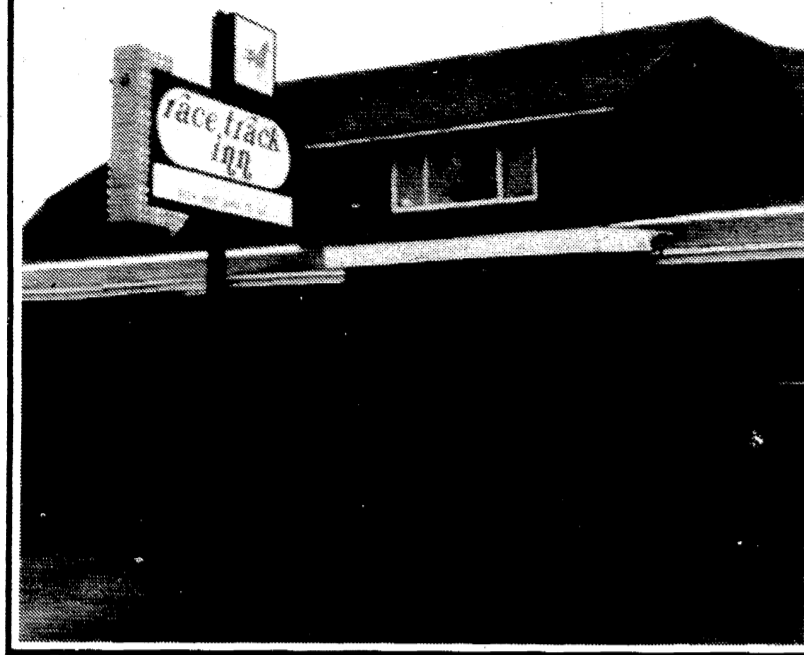
EXTRA - SPECIAL SAVINGS ON SELECTED MERCHANDISE

VOGEL'S & FOSTER'S

DOWNTOWN CHELSEA - 475-1606

ENTERTAINMENT

Race Track Inn



The Race track Inn from the exterior is unpretentious and has the appearance of a local bar. Don't let that fool you however. Once inside a feeling of a true wayside tavern becomes evident.

Located about a mile west of Clinton on the old Sauk Trail, US-12 the Inn is on the north west corner of 12 and Barret Road just inside of Lenawee county.

The Enterprise crew visited the Race Track on Psychic night a couple of weeks ago and enjoyed the atmosphere and food.

This is a family operation. Owned by Pat and Eric Pogany. Crewed by Pat, Eric, son Todd, sister Marlene and her daughter Debbie along with some friendly waitress's and John who helps with cooking.

The Race Track Inn was built by Frank Pierce, of Detroit, in 1930. George H. Lancaster constructed a track behind the Inn about 1930. Horses were brought from near and far to be tested against other horses. Lancaster used old rail road boxcars to house the horses. Sundays, it is reputed, special races were conducted between

owners wanting to test the meddle of their animals. Rumor has it that farms and fortunes changed hands at the track.

The Race Track's menu is printed in the motif of an 8 race program. Starting with beverage, salads, sandwich's, hor--doives, baskets, soups, main courses to desserts. The thing I enjoy however is the special board showing the daily fare of noon and night. Homemade soup's, sandwich's or main courses. A super special recently was a stuffed fish, delicious. Pork chops pan fried, steaks (16oz), and many others that get the juices flowing. Prices that are affordable, a family can eat well here without breaking the bank or costing a mortgage on the homestead.

I mentioned that physic night is Tuesday night. A sawbuck will cover an evening of fun. A double sawbuck covers a full meal, drinks and entertainment. Try the Race Track, tell Pat, Eric, Marlene or Debbie that you are a friend of gar. Maybe you hadn't better come to think about it! Great place enjoy.

ROBIN'S NEST FAMILY FUN CENTER

2810 Baker Rd., Dexter (313) 426 - 0630

HOURS MON.-THURS. 10 A.M.-11 P.M., FRI. & SAT. 10 A.M.-MIDNIGHT, SUN. 1-10 P.M.



OVER 10,000 classic comic books For Sale!!! For Sale!!! HUNDREDS AND HUNDREDS OF baseball cards

Refreshments air hockey... pinball... pool tables... video games!!!

Pool Tourney 14 - 19 Boys & Girls 19 and up Men LADIES Air Hockey & Pinball Tournaments Too Call for further info (313) 426 - 0630

1/2 BLOCK PAST HIGH SCHOOL NEXT TO BOWLING ALLEY

Easter is the Season for Jelly Bean Cuisine

This year, borrow some "beans" from the Easter Bunny to create festive desserts for the family. Easter jelly beans from Brach's - called Jelly Bird Eggs - add the crowning touch to polka-dot butter cookies and colorful cupcakes.

Jelly Bird Eggs, pastel miniatures of the hen's egg, are sweet symbols of the season. The practice of giving and eating candy Easter eggs is relatively new - dating back only to the middle of the 19th century, but the egg has been a symbol of renewed life since ancient times. At least as far back as 900 B.C., the Chinese exchanged scarlet-tinted eggs during their Spring festival. In Medieval times, eggs were a part of Christian religious ceremonies. Americans will purchase 17 million pounds of Brach's Jelly Bird Eggs this Easter season and another 13 million pounds of Brach's Jelly Beans the rest of the year. If you're counting, that's 4.5 billion jelly beans annually!

Cookies and cupcakes decorated with Jelly Bird Eggs bring excitement to your Easter meal:

Jelly Bird Egg Cookies

- Cookie: 1 c. butter or shortening 3/4 c. sugar 3/4 c. brown sugar 2 eggs 1 tsp. baking soda 1 tsp. very hot water 1 tsp. vanilla 1 1/2 c. sifted all-purpose flour 1 tsp. salt 2 c. non-instant oatmeal 1 1/2 11-oz. bags Brach's Tiny Jelly Bird Eggs

Heat oven to 350°. Cream butter/shortening and sugar until fluffy. Add eggs and mix. Combine soda and water and add to mixture. Blend in vanilla, flour and salt. Add oatmeal and mix. Drop by spoonfuls onto greased cookie sheet. Space cookies about two inches apart. Partially bake 5-7 minutes (until cookies flatten). Remove from oven and arrange Brach's Tiny Jelly Bird Eggs into half-baked cookie dough. NOTE: Placing candy in cookies before baking will cause candy to melt, smear or bubble. Bake an additional 7-10 minutes until light golden brown.

Jelly Bird Egg Cupcakes

Cupcakes: Prepare cupcakes using your favorite recipe or mix and let cool.

- Frosting: 1 3-oz. package cream cheese, softened 1 tsp. milk 1 tsp. vanilla dash salt 2 1/2 c. powdered sugar food coloring 1 11-oz. bag Brach's Tiny Jelly Bird Eggs

Carpentry, remodeling & renovation

TED MICKA Specializing in Old Homes Licensed & Insured (517) 536-4371

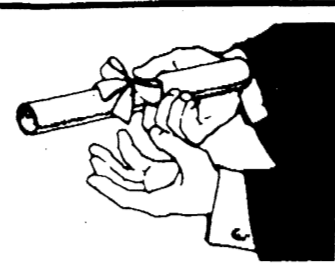
Haarer's Meeting Place

223 E. MAIN MANCHESTER 428-9500



Easter Brunch Buffet Serving your favorite breakfast and holiday foods or make your selection from our full menu Open 11 - 5 Easter Sunday

HOURS: Tues - Thurs 11 a.m. - 9 p.m., Sat. 11 a.m. - 10 p.m., Sun 12 - 5 p.m. Closed Mondays



GRADUATES

When you need Announcements Name Cards Memory Books Jewelry Party Supplies See Us!

The Manchester Enterprise 150 E. Main St. Manchester, MI 48158 428-8173

Enthusiasm finds the opportunities and energy makes the most of them. -Henry S. Haskins

THE AURA INN

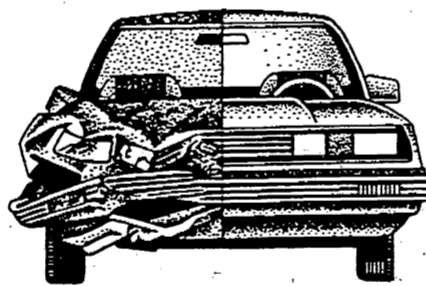
11275 Pleasant Lake Road Phone 428-7993

Walleye Dinner

FRIDAY APRIL 10th Starting at 6 P.M.

HOURS: OPEN EVERYDAY 12-12, except Mondays

NEED A NEW LOOK FOR SPRING?



MIDWEST FORD BODY SHOP 428 - 8343

- Paint Work - Collision Work - Free Estimates - Insurance Work

CALL LARRY GONYER 30 YEARS EXPERIENCE

510 W. Main, Manchester M - F 7:30 - 5:00

Brewster Academy Announces Winter Sports Awards

Stefan Knul, son of Arie and Sonja Knul of Manchester and a senior at Brewster Academy in Wolfeboro, New Hampshire, recently received a letter for his participation in varsity basketball during the winter athletic season.



Spring Sports Schedule

Table with columns for TRACK, JUNIOR VARSITY SOFTBALL, SOFTBALL, JUNIOR VARSITY BASEBALL, and MIDDLE SCHOOL TRACK. Lists dates, team names, and times.

Attention Dutchmen Sports Fans

Our sports writer, Jon Hardenbergh, is on vacation until the first week in May.

Coaches, parents, friends of athletes are invited to submit accounts of April sports events and pictures. Preferably pictures should be black and white. Deadline is 3:00 Monday week of publication.

Jon's Photo Tees Tapes and T'other Things 122 East Main 428 - 9509 Tu - Fri 10 - 5, Sat 9 - 1



JON & RICHARD Custom Photo Service, Tapes, CDS, Sweats, Tees, Gifts Manchester Postcards, Photo Buttons, Film, Pottery, Sports Cards, Dutch Memoirs, Camera Sales & Service

Sandy Sanders BASKETBALL CAMP OF CHAMPIONS!

When: June 29 - July 3, 1992

Who: Boys and Girls, 8 - 18 yrs.

Time: 9 a.m. - 4:30 p.m.

Where: Concordia College 4090 Geddes Rd. Ann Arbor, MI

For information or application, call or write: Sandy Sanders Camps of Champions 925 Loyola, Ann Arbor, MI, 48103 (313) 662-0021

MIDWEST FORD

SPRING INTO SPRING CAR CARE SPECIALS

81 POINT BUMPER TO BUMPER SERVICE INSPECTION \$14.95 w/ coupon expires 4/16/92. PRE-SEASON A/C INSPECTION FREE. TUNE - UPS 4 cyl \$39.95* 6 cyl \$44.95* 8 cyl \$49.95*. EXPRESS LUBE OIL & FILTER \$18.95* most light trucks & cars w/ coupon expires 4/16/92.

* Plus applicable taxes & shop supplies. Protect your investment with Regular Maintenance Call Richard or Larry in Service at 428 - 8343 For Personal Attention M - F 7:30 - 5:30 510 W. Main



HURON GUN COLLECTORS GUN SHOW

Ypsilanti, Michigan April 11, 1992 9 AM - 5 PM April 12, 1992 9 AM - 4 PM Washtenaw Sportsman's Club 5095 Ellis Road, Ypsilanti for information call, 517 - 547 - 7453

CLASSIFIEDS

SERVICES

Michigan Peat Sales: Black dirt for sale \$12 a yard delivered. Fast delivery. 428-9664 tfn

Lost or Found a Pet? Call the Huron Valley Humane Society. 662-5585. tfn

Little Wack Excavating: Licensed and insured. Basements, drainfields, digging, bulldozing, trenching, blackdirt, sand gravel. Snow removal and salting. Paul Wackenhut. 313-428-8025. tfn

Merriman Insulation: Free estimates. Blown-in cellulose professionally installed. George Merriman. Phone 517-592-5527. tfn

Fielder Painting: Interior and exterior. Free estimates. Senior citizen discount. Phone 428-8506 tfn

Available for Wedding receptions, parties, meetings. Hall rental \$175, \$40 cleaning. Catering available. For further information, call 428-8393 or 428-7637. tfn

Black Dirt For Sale: By the pickup load or delivered. Dozer and backhoe work also available. 428-9265. tfn

Alber Excavating: Basements, drainfields, driveways, finished grade, water and sewer. Call 313-428-8636. tfn

Village Hair Forum in the Mill. Full service salon with tanning beds. 428-7684. tfn

Excavating: Sand, gravel, backhoe and bulldozing. Reasonable rates. 428-9265 tfn

Benedict Painting: Call Chuck for free estimates. 15 years experience — interior & exterior painting. 517-536-4812. tfn

Margie's Upholstery: Still serving Manchester. 517-536-4230 tfn

Piano Tuning and Repair: Qualified technician with 15 years experience. Ronald Harris. 475-7134 tfn

Tim's VCR Service. Free estimates, free pickup and delivery. Fast Service 428-7625 tfn

Income Tax Preparation: Reasonable rates. H & R graduates. 313-428-7334. 4/16

"My Sister's House": Wall paper hanging/stripping, trim painting, "lite" carpentry. Wonderful selection of papers & coordinating fabrics, now 30% off (Will also hang paper purchased elsewhere.) for free measuring & estimate, or to receive decorating newsletter, call Juli Trolz 428-7117.

Attention AARP Members: 12% Discount on Auto Insurance. Sutton Agency, Inc. 428-9737. eoe

RLS Flooring: Floor covering installation and consulting. Carpet and vinyl repairs. 663-4825 or 426-0585 for immediate response. Pager #990-1696. 4/30

Work Wanted: Landscaping, brick pavers, lawn mowing. Call 428-8986 for a free estimate. 4/16/p

Too Busy To Paint? Want a fresh look for spring? For "A Woman's Touch", call Martha at 428-9269. Estimates. References. 5/7/p

FOR RENT

One Bedroom Apartment in Village: Newly remodeled. Utilities included. Adult only. No pets. 428-9216. tfn

Apartment for Rent: Two bedroom with laundry room in the Village. \$545/month. 428-8711 tfn

One Bedroom Apartment in Village. Upstairs, one person only. Non-smoking, no pets. \$325/month includes utilities. 428-8163. tfn

HOMES AND LOTS FOR SALE

10 Acres — Grossman Road: For sale by out-of-state owner. Terms available. \$25,000. Call Don Limpert, Abraham Linehan Realty (313) 428-7400 or (517) 265-2164.

Manchester Village: 7.3 acres zoned multi-family. All facilities available. Paved road, trees, spring-fed pond. River frontage. Out-of-state owner wishes to sell. Full price \$95,000. Call Don Limpert, Abraham Linehan Realty (313) 428-7400 or (517) 265-2164.

Lot For Sale By Owner: Deuschgrat Subdivision: Paved street, underground gas, electric, telephone. Corner lot with direct lake access. Last one! \$35,000. Terms available. Day 428-8173; evenings 428-9649. Ask for Emory.

(Vacant Lafayette, Manchester) Vacant lot on Lafayette in Manchester Village. City services available. \$19,000. Cal Deborah Engelbert 971-6070, eves. 475-8303.

OPEN SUNDAY 2-4 PM 19365 Sanborn, Manchester Secluded home with family room, four bedrooms, 2-1/2 baths, country kitchen, 4.2 acres, \$178,900. Kenneth Shillair, 429-2200 days/439-8088 eves. M-52 south, right on Main, left on M-40 comb St., right on Sanborn. 16340

7810 Lamb Road, Manchester Wonderful ranch on 39 acres with three bedrooms, hardwood floors, three-car garage. Pole barn, land contract available. \$174,900. Barbara Gomes, 429-2200 days/517-456-7038 eves. south on M-52 to Manchester, west on Main, turns into Austin, to Lamb Rd. 18856.

6493 M-52, Manchester Three-bedroom ranch on 1.63 acres. Family room with fireplace, living room with wood burner, country kitchen, 1-1/2 car garage. \$119,500. Bonnie Jurgensen, 429-2200 days/439-7522 eves. On M-52, between Pleasant Lake and Grass Lake Roads. 22423. Equal Housing Opportunity Edward Surovell Co. Realtors

HELP WANTED

No Layoffs: Local distributor for 55-year-old manufacturing firm has six permanent full time positions. Salary guarantee, benefits, company training, management opportunity. Call for an interview Monday thru Friday 1pm-5pm. 517-782-7178 tfn

Wanted: Person to care for infant, 5-year-old and 8-year-old, starting approx. May 7. Call Ann Roberts at 428-9173. 4/9/p

Help Wanted continued

Person Needed For Child Care in my home. Call Robert or Mary at 428-9465. 4/30

Experienced Grill Cook wanted. Apply in person 9am-5pm at the Country Brunch Cafe, M-52 north of Manchester at the Livestock Exchange. 4/9

Couple Needed to Manage Farm/Ranch in Manchester area. Must be able to work independently. Mechanical skills and knowledge of livestock required. Call after 6pm. 517-456-6126. 4/16/p

Assembly Work Available in western Washtenaw County: All shifts. Call 665-3757. 4/16

Are you self-motivated? Has your income peaked in your current field? Do you want flexible hours with potentially unlimited income? Are you interested in joining Washtenaw County's largest and highest producing real estate company? If the answer is yes, then call Merritt Martin at Spear & Associates, Inc. Realtors. 429-4947.

MISCELLANEOUS FOR SALE

McCullough Chain Saws, service and parts. Bars, chains and some parts for other brands. Earl R. Alber, 639 W. Main, 313-428-8707. tfn

Walk-in Refrigerator: (Bally) 8x12. Must move. Excellent shape. 313-439-3816. 4/9/p

Heavy Duty Wood Splitter: Custom built for the serious woodsman only. \$1,000 firm. 428-7477. 4/9/p

Like new white Child Craft Crib 'n' Bed set which converts to youth bed with 3-drawer chest, hinged dropside. (Brand new \$550). Asking \$225. Call 428-9038.

Heavy Duty Utility Trailer: Good wood hauler. 4x8x4'. \$400. 428-7477. 4/9/p

PETS, SUPPLIES, SERVICES

Wolf Hybrid neutered males: Two-9mos. & 1 yr., \$100 ea. 40% & 65% wolf cubs, 9 wks. & 6 wks., \$300. 3/4 Husky-1/4 Malamut pups. Great kids' pets. \$100. 313-231-1150. p

ANTIQUES

Ann Arbor Antiques Market — The Brusher Show: April 12, 5055 Ann Arbor Saline Road, Exit 175 off I-94. Over 350 dealers in quality antiques and select collectibles, all items guaranteed as represented and under cover. 6am-4pm. Admission \$4. Third Sundays (except April & November). 24th season. The Original!!!

Manchester Antique Mall: 35 Dealers. Open 7 days 10-5. 116 E. Main. 428-9357 tfn

Wanted To Buy — Antiques: Call Limpert Antiques 313-428-7400

WANTED

Clean Fill Dirt Wanted: Call 428-7002. 4/16

Wanted to Buy: Old Comic Books. Pre-1965. Call Rick 428-8115 evenings. 4/23/p

Wanted to Buy: Any items with "Spike's" or "Benedict's Mobil Service" on it. Call T. Benedict, 428-9038

Wanted To Buy continued

Looking to Buy Commissioned Manchester "Cat's Meow" buildings. If you would like to sell yours, call 517-456-7713. p

WORK WANTED

Lawn mowing, tree & bush trimming, light landscaping, hauling and more. Insured. Free estimates Call 428-7002. 4/30

MISCELLANEOUS

12 Acre Hay field for Rent. 40 cents per bale. Bowns Road. 428-8701. tfn

VEHICLES FOR SALE

1985 Ford Escort: Good, clean, solid transportation. One owner. \$750. 428-7784. tfn

CHILD CARE

Free Registration Fees for all New Summer Enrollments. Art, music, literature, nature and snacks included in all programs for children 1-8 years. Contact Little Dutch Child Care Center for information 428-8988. tfn

Manchester Co-Op Pre-school begins Open Enrollment for 1992/93 on Wednesday, March 25 at 9am. Classes will be as follows: M-W-F am 4-yr olds 9-11:45. M-W-F pm 3/4 yr olds 12:30-3:15. T-T am 3-yr olds 9-11:45. T-Th pm 3-4 yr olds 12:30-3:15. Call Laura Spensley at 428-9627 to register. 4/30

Child Care In My Home: M-F, possible Sat. Country atmosphere, large yard, meals, references. Call 428-9034. 4/16/p

GARAGE SALES

Saturday Only: 10am-5pm. At the Mill, 201 E. Main St. The 18th Century Shoppe & Surprize! Surprize!

Three-Family Garage Sale: 36" electric stove, good shape; tools, antiques & misc. 14560 Buss Rd. hlf way between Napoleon & Manchester. Thurs., Fri., Sat. 9:30am-6:00pm. p

Garage Sale: Three-family. 17665 Pleasant Lake Road, 2-1/2 miles west of M-52. Friday, April 10, 9am-6pm. p

April 10, 11 & 12: 844 Russsmiller Loop off Spicer Dr., Brooklyn. '78 Ranchero, collection of mugs, hats and much more.

Yard & Barn Sale: 56" pole-top rotary tiller, 30" 4-row Case corn planter, 12" MasseyFerguson walk-behind tiller, queen-size waterbed with headboard, kids' stuff, antiques of all sorts, tools, fishing equipment, compound bow, bow stands, .22 rifle, '79 Impala and tons more not listed at 8517 M-52, 3 miles north of Manchester. Fri-Sat, 9am-5pm, Sun 9-3. Free puppies. 428-9353.

CARDS OF THANKS

No words could express enough thanks to everyone for the kind words, food, cards, flowers and visits during the loss of our mother, also doing her stay at the nursing home. A special thank you to Rev. Marsha Woolley and the Jenter-Braun Funeral Home. May God bless each and everyone. Family of Alma Uphaus

Easter Bunny advertisement with illustration of a bunny and text: 'The Easter Bunny Shops at SURPRIZE! SURPRIZE! In the Mill 201 E. Main Manchester Wed.-Sat. 10-5 Sun. 12-5'

Manchester Electric advertisement: 'Want to get rid of your unsightly overhead wires & replace them with NEW & IMPROVED underground wiring? CALL MANCHESTER ELECTRIC 428-8243 428-8331 200 Riverside Drive, Manchester, MI.'

INFORMATION

Karaoke continued from page 2

By this time, the bowling league closed out the tenth frame and started filtering into the standing-room-only lounge. More Men and bar babes clustered near the back, two fingering their longnecks, amused by the invasion of their sacred space. But no one was leaving. Time for some more kid singing. A young boy did his best Michael Jackson imitation and shared the stage with his mother, as both speed read, "She told me her name was Billy Jean, and she caused a scene... people always told me be careful what you do..." Don't do Michael unless you've got staccato lips. The sighs this time echoed, "I'm glad that's not me up there."

Rodney came back to try a Beach Boys falsetto, to the guffaws of the Men, but had enough guts to stay on stage until his humbling was over. Lesson number two: Make sure the song matches your voice, and practice in the shower one week before Karaoke. Points off from the ladies, dude.

Two Men finally got on stage, effectively stimulated by brown bottles, and charged into, "Sweet Home, Alabama" to the mirthful delight of the other Men, who by now could relate to the spirit of the night. Scenarios twisted in their heads, imagining how they could pull off Rod Stewart's, "Do Ya Think I'm Sexy?" or Elvis', "Love Me Tender." And I can imagine the female rejoinder, "D-I-V-O-R-C-E" by Tammy Wynette.

Proprietor Ed Greenleaf has only been sponsoring Karaoke for five weeks now, and told the truth when he told me, "You're never going to know what's going to happen from one week to the next." And I believe it. Karaoke taunts you with a song list that ranges from Sinatra to Striesand, from Hank Williams to the Highwaymen, from Ronstadt to the Rolling Stones, 47 CD's in all, with 18 hit tunes apiece. A song is on that list for you, so don't throw away those tight jeans just yet. A chance exists for your live crew and you to

whoop it up and get down funky Thursday nights at the Mark IV Lounge. If you put together a group of 20 or more, Manchester, I'll allow you to pull me and Garlick along for the ride, and listen to him sing, "All I'm askin', is for a little Respect..." while he imagines everyone else humming, "Sitting on the dock of the bay, watching the tide roll away."

Notice of Public Hearing Freedom Township Zoning Board of Appeals

Take notice that Freedom Township Zoning Board of Appeals to hold public hearing and meeting on application for a variance from Freedom Township Zoning Ordinance by George W. Hinderer to split 30 acre parcel into 2 15 acre parcels and have road frontage of 330.00' and 328.08' to build home on each parcel. Location part of NE 1/4 sec. 28T35R4E30AC. Tax code 14-28-100-005. Said hearing to be held on April 14, 1992 at 7:00 p.m. in Freedom Township Hall, 11508 Pleasant Lake Road. Interested persons invited to participate in public hearing or written input be addressed to Chm. Luther Schaible, 4665 Fletcher Rd., Manchester, MI 48158 Neil Stierle, Secretary

BRIDGEWATER TOWNSHIP PLANNING COMMISSION PROPOSED SUMMARY MINUTES March 9, 1992

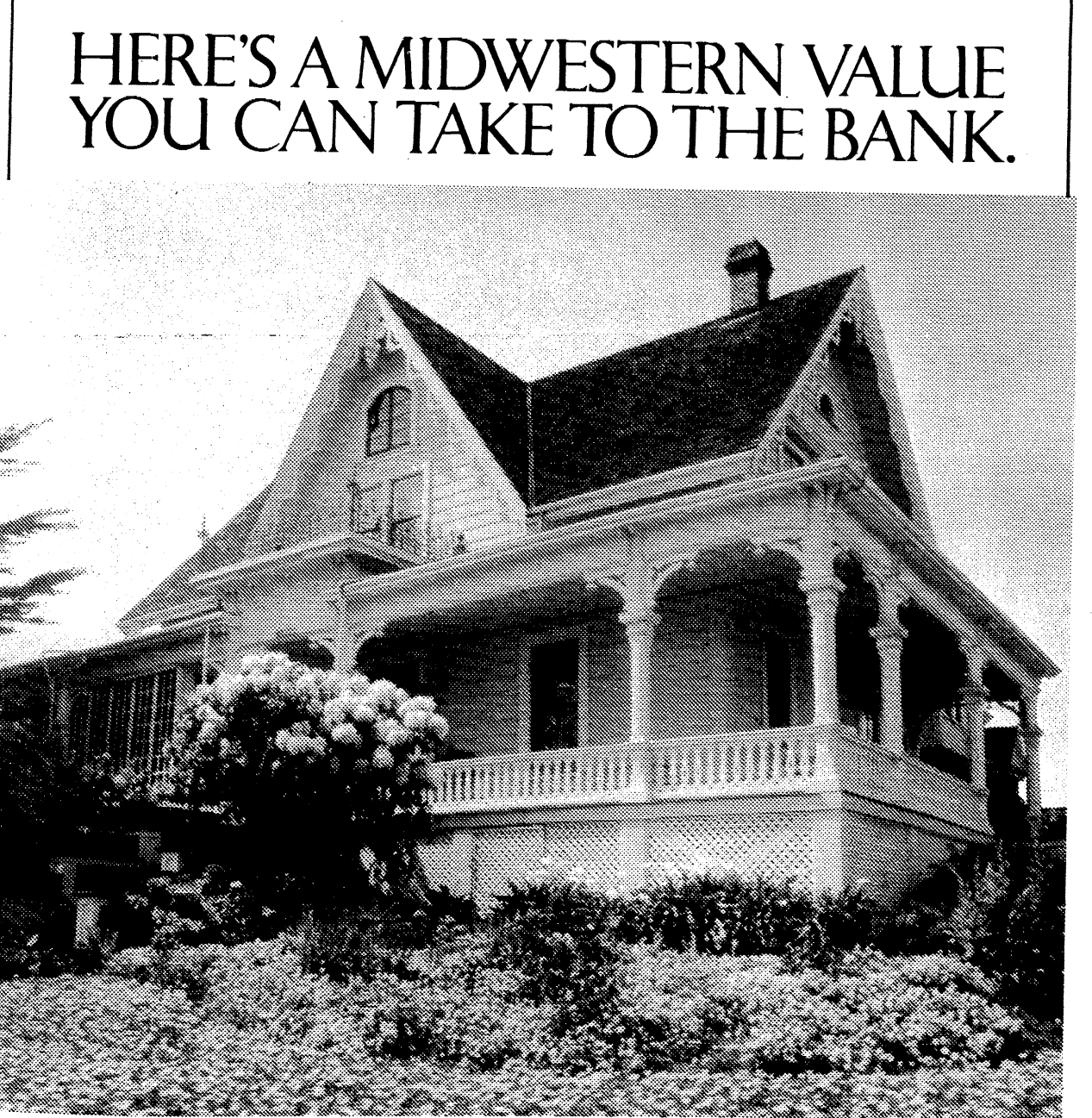
Chairman Fish called the meeting to order at 7:35 P.M. Present; Fish, Cobb, Wahl, Iwanicki, Dull, Dadds, Peacock Absent; Mann, Marion Minutes of the meetings of February 10 and 24 were approved as mailed.

Chairman Fish noted an application received from Laura Semanske for a Conditional Use Permit to allow operation of an in-home child care center. Chairman Fish noted the application complete and hearing no objection a hearing on this matter was scheduled for April 13, 1992 at 7:30 P.M. Regular meeting of planning commission to immediately follow.

At the request of residents present Chairman Fish announced additional time for concerns and comments regarding the Ameritech application. Issues such as property values, aesthetics and health and safety as they relate to this permit application were discussed. Placement of this facility was also questioned.

Hearing no objection, Chairman Fish announced this issue will be on the agenda April 13th. All new concerns from residents should be submitted to the secretary by

March 27 and all documentation regarding those concerns should be submitted by April 3. Ralph Pasola reviewed statistical information from the survey, and reviewed wording changes on the objectives for the Development Plan revision. Goals and strategies will be worked on in subcommittee meetings on the 26th of March and April 7th. Regular meeting of Planning Commission will include final-review of Goals, Objectives and Strategies. All Bridgewater Township residents are encouraged to attend. Zoning Administrators report; 1. Zoning permit issued to allow construction of an addition to a barn at 12924 E. Michigan Ave. 2. Zoning permit issued to allow construction of a storage barn on property at Fisk and McCollum Rds. 3. Zoning permit issued to allow construction of a new residence at 10245 Kies Rd. 4. Zoning permit issued to allow construction of a new residence at 10144 Austin Rd. Motion by Dull, second by Iwanicki to adjourn. Passed without objection at 10:35 P.M. H.Cobb, Secretary Village merchants are producing a placemat for area restaurants. Advertising space is available. Contact Jim Achtenberg at 428-7011.



First America advertisement: 'LOCK IN A LOW FIXED-RATE HOME EQUITY LINE THROUGH 1992. Borrowing against the equity in your home can make good sense. Especially now when you come to us. Because we can lock in a low 7.5 percent APR fixed-rate line of credit for you through the end of the year. The sooner you do it, the more you can save. And the interest may be tax deductible. Consult your tax advisor. So come by any First of America office to apply today. Because this offer ends May 31. Or call us at one of the numbers below. And get a low fixed-rate home equity line for 1992. From a bank that's a big believer in Mid-western values. ONE OF THE MIDWEST'S BIGGEST BANKS. BUT ONLY WHEN YOU WANT US TO BE. FIRST AMERICA. Property insurance required. Offer available at participating banks only. Loans subject to credit approval. *Through 12/31/92. **Non-promotional rate after 12/31/92. Estimate based on Prime Rate as of 2-15-92, and is subject to change quarterly at 2% over Prime, not to exceed 18% in Michigan and Illinois, or 21% in Indiana. For information call us at: 1-800-735-0034 Member FDIC. Equal Housing Lender.'

BACK DOOR PARTY STORE advertisement: '500 Ann Arbor Street Phone 313-428-9287 Manchester, Michigan. BEER WINE KEG BEER MICHIGAN LOTTO Instant and Daily Lottery Tickets UNION 76 GAS Self Serve STORE HOURS Monday - Thursday 6 a.m. - 9:30 p.m. Friday & Saturday - 6 a.m. - 10 p.m. Sunday - 7 a.m. - 9 p.m.'

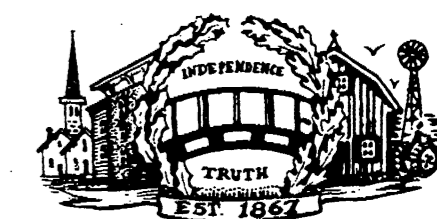
Bridgewater Township Planning Commission advertisement: 'Notice of Public Hearing Bridgewater Township Planning Commission A Public Hearing will be held Monday, April 13, 1992 at 7:30 P.M. at the Bridgewater Town Hall, 10990 Clinton Rd. The Public Hearing will consider an application for a Conditional Use Permit; Application of Laura Semanske for the property located at 8930 Arkona Rd, Clinton Mi., requesting a Conditional Use Permit to allow the operation of a home child care center under section 4.03A Rural Districts, as required by the Zoning Ordinance of Bridgewater Township. Written comments, for receipt prior to the hearing, may be sent to James Fish, Chairman, Bridgewater Township Planning Commission, 11691 Hogan Rd, Clinton, Michigan 49236. The regularly scheduled meeting of the Planning Commission will be held immediately following completion of the Public Hearing. H. Cobb, Secretary'

Bridgewater General Store advertisement: 'Bridgewater General Store • Very Cold Beer • Wine • Pop • Groceries • Microwave Sandwiches • Gas • Hot coffee Located in Beautiful Downtown Bridgewater 8994 East Austin Road Between Saline and Manchester Telephone: 429-4020 Monday — Saturday 7am-9pm Sundays 9am-7pm VIDEO RENTALS April Movie Specials: 3 movies for \$5 for 2 days Short Cartoons 3 for \$1'

AD DEADLINE 3:00 MONDAY PHONE 428-8173

THE MANCHESTER ENTERPRISE

The Center of the Universe



124th Year — Vol. 124, No 26

Manchester, Michigan

35¢ per copy

APPROVED PROCEEDINGS MANCHESTER VILLAGE COUNCIL

MARCH 23, 1992

PUBLIC HEARING CHI-BRO GRANT APPLICATION

The regular meeting of the Manchester Village Council was called to order by President Becktel at 7:00 p.m. Council members present: Becktel, Kwolek, Gordon, Cooper, Brooks and Clerk Tucker. Also present: Deb Havens, Joseph Marshall, Wendell Reinhart, Richard Taepke, Janet LaBeau Shurtliff, Carl Werner, Dennis Bartlett, Don Limpert, Glenn Burkhardt, Pat Fielder, Diane DuRussel, Patty Swaney.

The minutes of March 2, 1992 regular meeting were approved as submitted on a motion by Gordon, support by Cooper. Vote: Ayes-all. The proceedings of the March 2, 1992 regular meeting were approved as submitted on a motion by Cooper, support by Gordon. Vote: Ayes-all.

The Clerk read the results of the election held on March 9, 1992. The Clerk swore in as Village Trustee Michael Gordon, Joseph Marshall and Richard Taepke.

Motion by Becktel, support by Gordon to appoint Chris Brooks to fill vacancy left by resignation of Larry Becktel, Trustee and complete his term. Vote: Ayes-all. Abstain: Brooks.

Motion by Becktel, support by Marshall to appoint Wendell Reinhart to fill vacancy left by resignation of Jeff Wallace, Trustee. Vote: Ayes-all.

The agenda was approved as amended on a motion by Brooks, support by Gordon, deleting 8g, 8h, 8i, and 10a. Vote: Ayes-all.

Motion by Gordon, support by Reinhart, to approve expenditure in the amount of \$3,102.00 for burying the electric lines at Chi Bro Park as quoted by Consumers Power. Roll Call Vote: Ayes-all.

Motion by Brooks, support by Gordon, to adopt the resolution designating Jeff Wallace to act on behalf of the Village of Manchester in coordinating the recreation grant application and project. Vote: Ayes-all.

Motion by Cooper, support by Taepke, to authorize Jeff Wallace to write a letter authorizing Layne-Northern to apply to the State for the proper permits to allow them to proceed with the next phase of the third well project. Vote: Ayes-all.

Motion by Marshall, support by Gordon, to purchase 24 water meters and one 12" clamp, as requested by Gary Wiedmayer, for a total of \$1327.80. Roll Call Vote: Ayes-all.

Part Road project letting was awarded to C & D Hughes, Inc. with a low bid of \$33,753.00.

Motion by Becktel, support by Cooper, to appoint Jeff Wallace as street administrator for the Village of Manchester. Vote: Ayes-all.

Motion by Marshall, support by Gordon to accept the Sheriff Report as submitted for the month of February. Vote: Ayes-all.

Motion by Becktel, support by Reinhart to authorize McNamee, Porter & Seeley to do the required testing of grit samples in the amount of \$1300.00. Roll Call Vote: Ayes-all.

Village Council 4/6/92 by "Scoop" Limpert

Village Council convened under the new Village Council President, Larry Becktel to assign council persons to various committees. Brad Roberts addressed council with a grievance and Village Manager Wallace and Roberts met in private session.

Council person Cooper advised council of the possibility of a refund up to \$10,000 for Solid Waste and Recycling tip fees.

Appointed to the Planning Commission: Robert Daverman, Chairperson, Sue Gleason, Secretary, Mark Palms, Vice-Chairperson, John Hinkley, Joan Schiller, Martin Way, Guy Little, Mark Roberts and Robert Lowery members at large.

Industrial Park Ad-Hoc Committee appointments: Mary Kallewaard, David Little, Jeffery Wallace, Larry Becktel, Don Limpert and Cris Brooks.

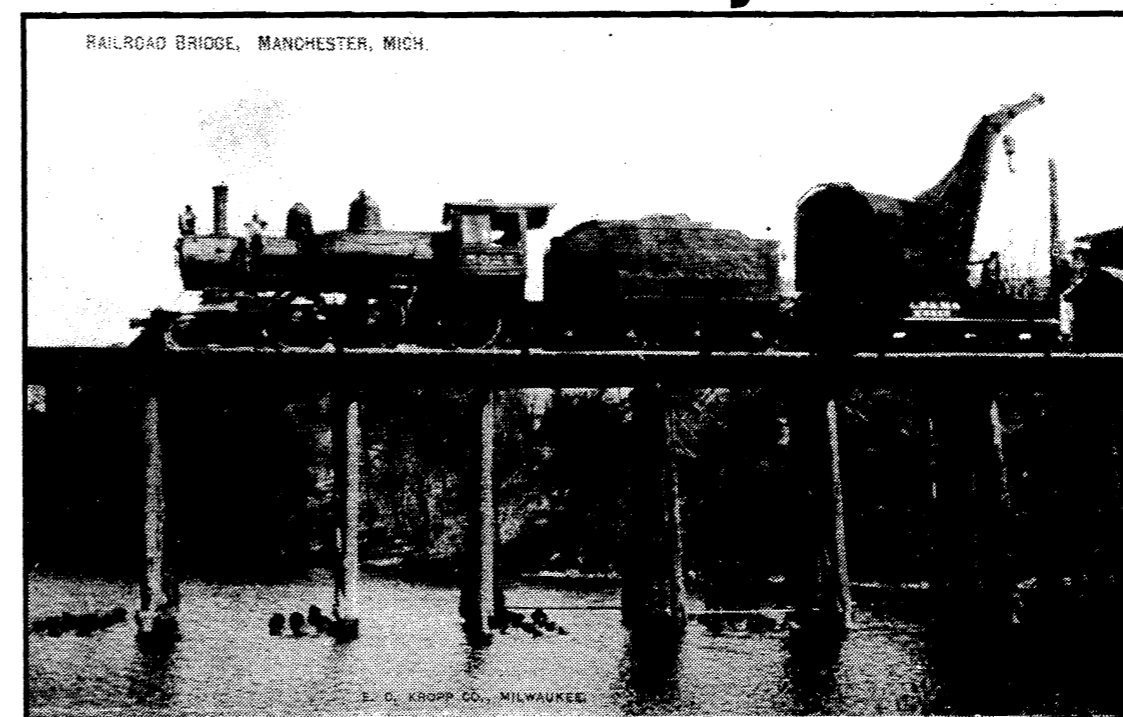
Parks Commission; Diane DuRussel and Mike Carey
MaNamee, Porter & Seeley awarded engineering contract for Parr Rd., \$7,600 for construction phase services. Additionally M, P & S, submitted a bill of \$4,560.08 for engineering services, sewer separation project.

"As Parents Grow Older"

Chelsea Community Hospital will be offering a five-session course titled, "As Parents Grow Older." This course assists with concerns faced by adults with aging parents or relatives. The course will be held on Wednesday evenings from 6:30-8:30pm, beginning April 22 and running through May 20. Advanced registration is required. For more information and to register, call the Chelsea Community Hospital Social Work Department at 313-475-3952.

The Huron Valley Chapter of the Michigan Archeological Society's monthly meeting is April 15, 7:30pm in the Modern Language building (corner of Washington & Thayer), Room 124 B, Ann Arbor. Speaker John Halsey will be addressing the Millecoquins River wreck. This meeting is open to the public.

Down Memory Lane



Riding the Rails in Manchester

The Centennial book of Manchester, *First Train - Progress*, attributed on Sept. 23, 1870 the first train entered Manchester. This was incorrect, and the following story by Marsha Johnson Chartrand corrects the impression.

Riding the Rails in Manchester

by Marsha Johnson Chartrand
As you canoe leisurely down the river in summer, having come the route of the canoe race from Sharon to downtown Manchester, have you ever found yourself shored up on a post which lurks underwater? I have; and that was my introduction to the railroads in Manchester. As a newcomer to town (I've only lived here twenty years), I didn't realize that... Once upon a time, Manchester boasted not one, but two railroads. The one whose erstwhile bridge almost toppled me on one of my earliest canoe trips, the Detroit, Hillsdale and Indiana

Railroad, was projected shortly after the Civil War and completed in 1870. The first train on this line chugged into town on September 23, 1870. The depot was located to the east of Ann Arbor Hill, between the Edwin Jaynes Lumber Yard and the Wheat Elevator; somewhere in the vicinity of Chi-Bro park. The railroad bed is still very much in existence in many parts of town. Starting down west of the high school, you can walk along the bed all the way to the water tower and the park. If you take the road down to Main Street, and then proceed north on Clinton Street, you can again follow the railroad bed down past the river to Union Street. The tracks were torn out in April of 1965, by the New York Central Railroad. This railroad, however, was the second line in Manchester. The route of the Palmyra and Jacksonburg Railroad was chartered in 1836 through Manchester. This was the earliest railroad in Washtenaw County, predating even Ann Arbor, which was reached by rail in 1839. It went through Tecumseh and Clinton, then on from Manchester into Jackson. It was later operated as the Jackson branch of the Lake Shore and Michigan Southern railroad. The "old" depot, which was torn down in the mid-1970's, was behind Walco Foods and had been used for many years as a warehouse by E.G. Mann's mill. The tracks themselves had been removed in 1963, apparently without comment by the community. The Manchester Enterprise did not publish an account of the removal process as they did in 1965 at the time of

the dismantling of the second railroad. The route began in Ypsilanti and ran through Saline, Bridgewater and Manchester and on to Hillsdale. There was a time, in the early 1900's, when the trains were coming into or leaving Manchester every half hour. Passenger service by train in Manchester was the envy of many communities in the area. The last few years of service, however, saw the trains coming into the village only two or three times per week. Mr. Ernest Fick, the foreman in charge of track retirement for New York Central, noted that in his forty years of taking up tracks, the Manchester residents were the only ones who bothered to stop and express regret at seeing the railroads leave town. In 1840, the total railroad mileage in the state totaled 104 miles, making Manchester truly a pioneer in the state's railroad history. By 1870, when the second line came through Manchester, the total mileage was 1,739 miles. In the heyday of railroads, by 1910, 9,021 miles of track were run in Michigan. But by the mid-1950's, passenger service was being discontinued throughout the state, and by 1960, the total railroad mileage had dropped to 6,640. In 1980, railroad mileage in the state totaled 5,370 miles. Life had changed. The railroads were no longer needed for the reasons they had become so important between the years of 1837-1910 - shipping and transportation - leaving Manchester somewhat isolated from the major routes of through transportation. At the time that

Margaret O'Connor Steps Down

A fine and wonderful Lady, with the courage of her convictions and steadfast perseverance, has decided to forgo reelection to Michigan's House of Representatives.

Dateline April 8, 1992, Lansing Michigan.

Declaring she is "putting her money where her mouth is" on term limitation, state Representative Margaret O'Connor has decided not to run for re-election to the Michigan House, and is looking instead at a congressional seat.

The ardent supporter of limiting legislative terms is also a longtime watch dog and critic of excessive state spending. She gets requests from all over the state for copies of her annual "Pork Barrel" awards publication that list hundreds of unnecessary and inappropriate governmental expenditures.

"Despite the fact that my once-lonely crusade against too much state spending now has resulted in sweeping changes in spending policies, I am ready to move on to new challenges," O'Connor said.

"I've made my contribution at the state level, and considering how loosely Con-

gress handles taxpayer's money, it may be time for me to take my spending-restraint message to Congress."

The Lodi Township Republican is eyeing the newly redrawn 8th Congressional District that includes all of Livingston and Ingham Counties, and portions of Washtenaw, Shiawassee, Genesee and Oakland Counties.

"Voters are frustrated with politicians and politics as usual," O'Connor said. "I'm frustrated too."

My longtime advocacy of a downsized, better-managed, more frugal government is finally coming to pass on the state level with Governor Engler's policies and programs. If running for Congress looks feasible, then I'm ready to translate my frustration with Washington into action.

O'Connor would not accept contributions to a congressional race from political action committees, but would accept donations from individuals.

Margaret we love and admire your stance in Lansing. You can count on our support of your candidacy to Congress. Your strength of character and integrity is desperately needed in Washington. Good Luck!



Inside this week's issue

- Who's the Enemy?.....Page 2
- Restoring Old Zion.....Page 3
- School Plus Sports.....Page 5
- Senior Citizens News.....Page 6
- Church News.....Page 7
- People & Occasions.....Page 8
- 125th Anniversary.....Page 9

Continued on pg 12

the advertising dollars do better in

SAVE Up To \$4.00
W/ coupon rebate
COUPON

Expires 4 - 30 - 92

ATLAS of Manchester 18875 W. Austin 428 - 7077 **SCIENCE DIET**

For Sale By Owner

14453 E. Austin Road — Totally updated 2,000sq.ft. brick ranch on 4 rolling, wooded acres. 4-5 bedrooms, 3 baths, 2 fireplaces, neutral decor, finished walkout basement w/ 2,000 sq.ft. of additional living space, 2-1/2 car attached garage, AC, 2 pole barns. 1.3 miles east of the Village of Manchester \$185,000.

428-7418

Why wait for your federal income tax refund?



- receive your refund anticipation loan within a matter of days
- available whether we prepare your return or not

H&R BLOCK®

135 E. Main Suite 100
428 - 7833
Mon. - Fri. 9 - 6
Saturday 9 - 1

Please deliver this copy of THE MANCHESTER ENTERPRISE to—
Manchester Library
P.O. Box 135
Manchester MI 48158

Kleinschmidt True Value Hardware

19860 Sharon Valley Rd. Manchester, MI
Phone 313-428-8337
Monday-Friday 7 a.m.-6 p.m. Sunday 10 a.m.-4 p.m.
Saturday 8 a.m.-5 p.m. Prices Good thru Sun. April 12th

12 H.P. 39" Cut
SALE \$997.00
Commercial Briggs & Stratton Engine, 5-Speed In-Line Shift W/Reverse

ORTHO
SALE \$8.49
Rebate \$2.00
Final Cost \$6.49
10-Lb. Diazinon Soil/Turf Insect Control
Helps Control Moles!

TRUE TEMPER
Round-Point DIRT SHOVEL
With Fiberglass Handle
SALE \$999
Reg \$26.49

Interstate 12 Volt Tractor Battery
SALE \$21.99
with Trade-in

GREEN THUMB
SALE \$8.99
5,000 SQ. ft. Bag
Weed & Feed Fertilizer

GREEN THUMB
SALE \$4.99
Lawn Food
5,000 Sq. Ft. Bag

10-Cu. Ft. Metal Dump Cart
\$99.99