

THE MANCHESTER ENTERPRISE

30¢ COPY

124th YEAR VOLUME NUMBER TEN

USPS 327-460

THURSDAY, DECEMBER 20, 1990

Christmas in Church

FILLS YOUR HEART WITH PEACE & LOVE



EMANUEL UNITED CHURCH OF CHRIST

Friday, December 21; Saturday December 22; Sunday, December 23: Live Nativity Scene Presented 7:30-9:00 p.m.

Monday, December 24: 7:00 and 11:00 p.m. Christmas Eve Candlelight and Communion Worship

FAITH COMMUNITY CHURCH

Sunday, December 23: 10:00 a.m. Christmas Musical Program, 7:15 p.m. Lifeline Christmas Party

SHARON UNITED METHODIST CHURCH

Sunday, December 23: 11:00 a.m. Chancel Choir Christmas Program

Monday, December 24: Christmas Eve Candlelight Service

ST. JOHN'S

Monday, December 24: Sunday School Christmas Eve Program 7:30, Candlelight Service 11:30

Live Nativity Scene

A live Nativity scene will be presented at Emanuel United Church of Christ, 324 West Main Street, Manchester, December 21, 22 and 23, 1990 from 7:30 p.m. to 9:00 p.m. each evening. Members and friends of Emanuel will be portraying shepherds, angels, wisemen, Mary and Joseph. The Christmas story and Christmas music continuously accompany the live scene. Live animals are also a part of the scene.

We invite you to stop by Emanuel Church on December 21, 22 and 23 as part of your family's Christmas celebration.

BETHEL UNITED CHURCH OF CHRIST

Monday, December 24: 7:30 p.m. Christmas Eve Carol and Candlelight Worship Service

ZION LUTHERAN CHURCH

Sunday, December 23: 7:00 p.m. Sunday School Christmas Program

Monday, December 24: 7:30 p.m. Family Candlelight and Communion Service

Tuesday, December 25: 9:15 a.m. Christmas Day Worship with Holy Communion

MANCHESTER UNITED METHODIST CHURCH

Sunday, December 23: 10:00 a.m. Musical Christmas Worship

Monday, December 24: 7:30 p.m. Family Christmas Eve Worship, 11:00 p.m. Traditional Candlelight Christmas Eve Worship

ST. MARY'S CATHOLIC CHURCH

Monday, December 24: Christmas Masses 5:00 p.m. preceded by Children's Choir Program at 4:30 p.m., 12 midnight preceded by Adult Choir Program at 11:30 p.m.

Tuesday, December 25: 9:30 a.m. Congregational Singing



Luminaria

Supplies for the Luminaria will once again be available at the Manchester Historical Society in the Blacksmith Shop on East Main Street.

The minimum cost is \$3 per household. The shop will be open from 3:00 to 7:00 p.m. on December 21, 22, 23, or by appointment. Call Forest Walz, chairman, 428-8234.

Recount Fails

In the November 6th election challenger Jim Douglas, Democrat of Saline, lost by a 40-vote margin to incumbent Margaret O'Connor in the race for 52nd District. Douglas requested a recount which has now been completed.

Since Douglas asked for the recount he must pay \$10 per precinct counted while the rest of the cost must be absorbed by the county. There are 165 precincts in the county but only 45 of these fall into the 52nd District.

The final tally did little to change the outcome. The first count was 15,079 to 15,119. In the second count O'Connor picked up about 6 more votes to win by 46.

Old Sewanee To Celebrate

The Manchester Enterprise
March 7, 1907

Fifty years ago next July the University of the South, or Sewanee university as it is best known, was organized, and in recognition of that beginning a celebration is to be held this year on the beautiful grounds of the institution on the high plateau of Lookout mountain to which will come the Sewanee clans from all parts of the union.

In the clan of Sewanee are such men as President Roosevelt and J. Pierpont Morgan, both of whom have promised to climb the mountain and join in the festivi-

ties. Neither the president nor the millionaire-financier are graduates of Sewanee, but because of the help they have given the university they are counted as members of the clan.

The university, broad in principle, upon every question, aims to turn out men who are able to grasp the hardest questions of life, guided by the spirit of altruism.

That was the spirit that inspired the founders of the University of the South when, in 1857, the cornerstone for the institution was laid on Lookout mountain. Sewanee has turned out thousands of graduates, and today there are lawyers, doctors and business men of great prominence throughout the country who will say that it was the influence of Sewanee that was in a great measure responsible for their success.

Sewanee has a romantic history. Bishop Polk, of Louisiana, was its founder. Bishop Polk enlisted interest among southerners and got a donation of 10,000 acres of forest land on a high plateau on Lookout mountain. Besides this, he was promised endowments aggregating \$3,000,000.

The day the cornerstone was laid - a bleak afternoon in October - 5,000 men and women made their way to the mountain top. In the town of Sewanee, at the foot of the mountain, there were not nearly enough houses to shelter them for the night. Tents were pitched in the forest, and there the visitors rested. There was an immense barbecue, and the occasion was one long to be remembered.

Several wooden structures were put up for the workmen, and the work of building the University of the South was soon begun. Then came the civil war. The Seventh Illinois troops one day, in traveling from Nashville to Chattanooga, came upon the crude university huts. The work of

Continued on page 11

Residents Meet For Peace



Lois Jewell, Mae Hardenbergh and Gail Curtis, organizers of the citizens gathering.
Photo by Jon

A group of Manchester area residents held an outdoor gathering Sunday, December 16 at the Gazebo in order to express their thoughts about the current state of affairs in the Persian Gulf.

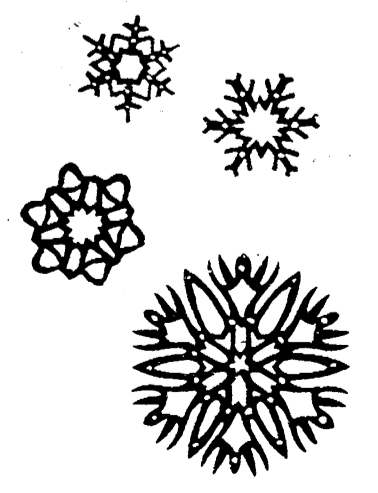
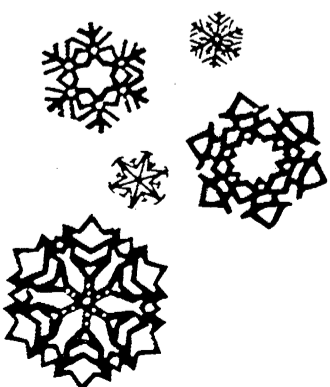
Several citizens made statements concerning the war which seems to be imminent in the minds of some in the administration. Those present made several suggestions as to what could be done, including letters to Congress and Letters to the Editor. They expressed a desire

to meet in a warmer place in the near future in order to make plans and co-ordinate programs.

This meeting will be held on Thursday, December 27 at 7:30 p.m. The location and program for this meeting is pending, and will be announced in the Enterprise next week. Watch for it!

Anyone who is interested in this project is invited to attend. Suggestions are welcome and may be expressed with a call to Gail Curtis 428-7849, Mae Hardenbergh 428-8690, or Lois Jewell 428-7609.

Merry Christmas



Christmas Safety: Helpful Hints

Santa says: Now's the time to make a list and check it twice - a safety list, that is. Many home fires that occur during the holiday season can be traced back to seasonal decorations. Fortunately, most fires can be prevented if you take the following simple safety precautions, say the experts at Underwriters Laboratories (UL):

- Keep light strings and other electrical decorations out of children's reach.
- Use light strings that have been tested for safety. Look for the UL mark. Artificial trees should also carry the UL mark - that means samples have been tested for flammability.
- Check each light set for broken or cracked sockets, frayed or bare wires and loose connections.
- Overloading circuits with too many decorative lights and/or light strings can cause fires.
- Check markings on light strings. Never use decorative lights marked "For Indoor Use" outdoors.
- Always turn off tree lights before leaving home or going to bed. A short circuit can cause a fire.
- To prevent overheating or damage, use only decorative lamp features packaged with each string. Use only manufacturer's specified fuses and lamps when old ones burn out.
- Make sure your tree is fresh when you buy it. If the needles are brown and break off easily, the tree is a greater fire risk. Keep your tree base holder filled with water at all times.
- Place your tree away from fireplace, radiator and other heat sources. Be sure it doesn't block a doorway.
- Don't cut or damage wire insulation when installing decorative light strings.
- Throw away gift wrappings immediately. Don't burn them in the fireplace. They can ignite suddenly and cause a flash fire. Burning evergreens in a fireplace is also dangerous - they can cause flames to flare out of control and

send sparks flying around a room.

- Equip your home with a UL Listed ABC type fire extinguisher and smoke detectors. They make good stocking stuffers.

Christmas Eve Traditions

Above the Arctic Circle, amidst the rolling white snowy hills dotted with dark green fir trees, lies Finland's "Lapland" - home to 200,000 Laplanders, 200,000 reindeer and Santa Claus. The long dark evenings of northern Finland are perfect for making toys, and Santa himself is headquartered in Rovaniemi, capital of Lapland. Each year, thousands of children from countries all over the world - not just Finland - get replies from the Christmas letters they send to: "Santa Claus, Arctic Circle, SF-96930, Rovaniemi, Finland."

It's no surprise, then, that the Christmas season is a very special time in Finland - marked not only by special foods, decorations and gift-giving, but by some uniquely Finnish holiday customs.

The Finnish tradition of beginning the holiday season with food, drink and get-togethers is a long one. Christmas Eve Day is big and festive in Finland. The official signal for the start of Christmas takes place midday on December 24 when a Christmas Proclamation of Peace is given from Turku - Finland's oldest town. Finns then proceed to the cemeteries, where evergreen wreaths and candles are placed on loved ones' graves.

Friends and family gather together to decorate the Christmas tree. Today, many Finns still use lighted candles on their Christmas trees (with a pail of water nearby) and candles are both a traditional Christmas gift and a key holiday decorating element in Finnish homes. Their love of candles stems from the fact that there's hardly any natural light or warmth from the sun during Finnish winter.

American Legion Auxiliary

The American Legion Auxiliary met at the Legion Hall on Wednesday, December 12, 1990, with 22 members present enjoying a Christmas potluck. President Armentrout called the meeting to order at 7:30 p.m. Roll Call was taken by the secretary and the minutes of the November 14 meeting were read, corrected and approved.

Our guests, 2nd District president Karen Griener and secretary Kay Richardson, emphasized the Auxiliary's participation and support of Operation Desert Shield. All Michigan military units are being recognized by all units of our organization.

Joyce Stein reported Manchester military people were remembered with cards from our unit, including four local people being sent packages in Saudi Arabia.

On behalf of Unit 117, Manchester American Legion Auxiliary, we would like to thank Simon Steele and the Manchester Enterprise for publishing our Auxiliary minutes throughout the year. Best of the holidays to you and yours, Simon.

The committee for the January meeting is Mary Blossom, Marge Scully and Diane Turner.

Louisiana Purchase

One of the world's most famous real estate deals was completed on December 20, 1803, when more than a million square miles of the Louisiana Territory was purchased by the United States from France. The French leader Napoleon sold the land for approximately \$20 per square mile.



THE MANCHESTER ENTERPRISE
150 East Main Street Phone 313-428-8173 Manchester, MI 48158
USPS No. 327-460

The Manchester Enterprise was established in 1867 and is published each Thursday at 150 East Main St., Manchester, Michigan, with second class postage paid at Manchester, Michigan 48158.
Edward E. Steele, Publisher Lenore A. Steele, Editor
POSTMASTER: Send Form 3972 To: Manchester Enterprise, 150 East Main St., Manchester, Michigan 48158.
DEADLINES: All Display Advertising and Pictures (Black & White ONLY) Are Due By 5 p.m. Every Monday For Same Week's Publication. All Classified Advertising and News Articles Are Due By 10 a.m. Every Tuesday For Same Week Publication.

Editorial

Why do we, the residents of the Village of Manchester and subscribers to Clearcable of Saline, pay more for our service than any surrounding community? We get fewer channels under our present system than is offered by competitors, why?

We understand that another increase is due in the near future.

Maybe we should all stand together and protest this unfair treatment.

A review of other cable services is:

1. Columbia Cable, servicing Ann Arbor and surrounding areas with 40 channels, \$16.60 basic service, will go to \$17.50 in January.
2. Clearcable of Saline: \$22 per month, slated to increase to \$23.40 per month. The system has a capacity of 37 channels.
3. Multi-Cablevision Co. based in Whitmore Lake: \$18.95 per month. The system has a 54-channel capacity.
4. Barden Cable in Detroit: \$14.50 per month slated to increase to \$17.50 in January. The system has a 78-channel capacity.
5. Continental Cablevision of Southfield: \$16.50 per month. The system has a 72-channel capacity.
6. Continental Cablevision of Michigan Inc. in Jackson: \$16.45 per month. The system has a 52-channel capacity.

Brownie Activities



At the December 12 Brownie Re-Dedication Ceremony the girls in Troop 728 received their year pins and four new members received the Brownie Girl Scout Pin. Posing for the picture are (front l-r): Jessica Batalucco, Jackie Palms, Laura Meyer, Donna Kruse, Sarah Luckhardt (second row l-r): Shannon Green, Rachel Jefferson, Lindsey Anderson, Emily Hughes, Cheryl Barker (back row l-r): Leader Patty Swaney, Taryn Meyer, Ali McAdam, Kristen Taddonio, Julianna Swaney, Ashleigh Sewell, Elizabeth Mester & Leader Lois McAdam.

Library Honors Businesses

On Tuesday, December 11, the Manchester Township Library Board honored the local businesses who contributed to the purchase of 60 American Classics. Representatives from Comerica Bank, First of America, Great Lakes Bancorp, Johnson Controls, Sutton Agency, Pilot Industries and Manchester Tool and Die were invited to view the books and newly-renovated Classics Room.

Librarian Dorothy Davies obtained a grant from the Andrew Mellon Foundation for the remaining cost of the collection. The shelves on which the collection is located were purchased with funds supplied by the Manchester 20th Century Club.

Renovation contributions also were used recently to purchase carpet, a sturdy table and additional lighting for the upstairs rooms used by students and researchers.

DIAL -A- GARDEN

The following is a monthly schedule of Dial-A-Garden, the system of pre-recorded daily gardening tips sponsored by the Washtenaw County Cooperative Extension Service. The system is in operation 24 hours a day, 7 days a week. Interested persons are invited to call 971-1129 at their convenience to listen to timely, up-to-date gardening information.

Thursday, December 20: Christmas Tree Seedlings
Friday, December 21: Caring for Christmas Plants
Monday, December 24: Plants and Christmas Traditions
Tuesday, December 25: No New Tape, Christmas Day
Wednesday, December 26: Salt Injuries on Plants

Public Notice

STATE OF MICHIGAN
IN THE CIRCUIT COURT FOR THE COUNTY OF WASHTENAW

NURAH (HIVELY) ZENALABIDIN
Plaintiff
-v-
WAYEL ZENALABIDIN
Defendant

Washtenaw Legal Center, P.C.
By: Andrew L. Fanta (P29540)
Attorney for Plaintiff
4930 Washtenaw Avenue
Ann Arbor, Michigan 48108
(313) 434-3800

ORDER TO ANSWER
At a session of said Court held in the City of Ann Arbor, County of Washtenaw, State of Michigan, on this 16 day of November, 1990.

PRESENT: THE HONORABLE MELINDA MORRIS, CIRCUIT JUDGE

On the 16th day of November, 1990, an action was filed by Nurah Zenalabidin, Plaintiff, against Wayel Zenalabidin, Defendant, in this court for divorce.

IT IS HEREBY ORDERED that the Defendant, Wayel Zenalabidin, shall answer to take such other action as may be permitted by law on or before the 31 day of December, 1990. Failure to comply with this order will result in a judgment by default against such Defendant for the relief demanded in the complaint filed in this court. Such answer or other action shall be filed in the above-entitled cause and a copy thereof sent to the Plaintiff's attorney.

Hon. Melinda Morris, Circuit Judge
Washtenaw Legal Center, P.C.
By: Andrew L. Fanta (P29540)
Attorney for Plaintiff

Tips For A Safe Holiday Season

Holidays are a rich time of warmth and sharing - a time for celebration. But a skilled burglar, a swift pickpocket or a crafty con artist can quickly cool that warmth into some cold, hard realities.

Although the holidays are a time of excitement and activity, they are also the peak season for criminals who prey on unsuspecting victims.

What can you do to help insure that your holidays are safe and joyous? Here are some tips to help you preserve good cheer and happiness throughout the New Year:

- Stay alert. During this fast-paced, "hustle-bustle" time of year, be extra cautious and alert to your surroundings. Take extra care to protect your wallet, pocketbook and belongings, especially in stores, crowds and while dining out.
- Shop before dark if possible. And if you plan to be out late, invite a friend along.
- Park your car in a well-lit parking lot or near street lights.

Always roll up your windows tightly and lock your doors, even if you plan to be away only for a short while. Have your keys in hand when you return to the car and check the interior before getting in.

* "Tis the season for giving, but be wary of strangers at the door seeking charitable donations. Ask for identification and learn how the funds will be used. If you don't like what you hear, decline to give any donations. Save your generosity for an organization of your choice.

• Be extra cautious about locking doors and windows when you leave the house. If you go away for a few days, get an automatic timer for your lights and radio. Ask a trusted neighbor to keep an eye on your house and pick up your mail.

• If you have a Christmas tree, use only fire-resistant ornaments and make sure that last year's lights are still in proper working order. Never leave Christmas lights unattended.

Program Cover Winners



The Klager Holiday Program will be held this Wednesday, December 19 at 7:00 p.m. in the Manchester High School Gymnasium. Holiday Program cover winners are (l-r): Nathan Walker-4th grade, Nic Gordon-3rd grade, Tristan Kladzyk-2nd grade and Joshua Harris-1st grade.

No Payments.
No Interest.
Until March 1st.
No Kidding.



Are You Putting Christmas Shopping Ahead of Your Car Maintenance?

Now, at MIDWEST FORD, you can have your car or truck's major repairs professionally completed before the holidays - and not have to pay for them until March 1st and with payments as low as \$10 a month.

We have certified mechanics in Heavy Engine Repair, Transmission Repair, Engine Driveability & Front End Repair. Our technicians can ensure your car or truck's performance!

We want to become your service repair facility - please try us - you'll be glad you did. We offer computer service to get you to work also!

Please call ahead for appointment.

Have a Safe & Happy Holiday Season.

Sincerely,

MIDWEST FORD SERVICE

510 West Main Street Manchester
Phone 313-428-8343

Cheer in the holidays.



Order Early



The Flower Garden
FLOWERS FOR ALL OCCASIONS
110 EAST MAIN STREET PHONE 428-7422
MANCHESTER, MICHIGAN



1990 LUMINARIA CHRISTMASEVE

Get Supplies At Blacksmith Shop
On East Main Street In
Manchester

Friday, December 21 - 3 p.m.-7 p.m.
Saturday, December 22 - 3 p.m.-7 p.m.
Sunday, December 23 - 3 p.m.-7 p.m.
Or By Appointment
Even Late Shoppers on December 24
Call 428-8234

SAND, CANDLES, BAGS,
INSTRUCTIONS
\$3.00 MINIMUM PER HOUSEHOLD

YOU OWE IT TO YOURSELF...

To Choose a
Quality Retirement

- Where delicious hot meals are available with the use of special rooms for your family and friends.
- Where you feel safe and secure.
- Where an attentive staff accommodates your needs and provides a gracious living environment inside and outside the facility.
- Where help is there if you need it.
- Where you can choose companionship in an adult community.
- Where privacy is respected.
- Where activities and transportation are provided.

Learn More About Your
Quality Retirement Options.



Brooklyn
Living
Center

Call (517) 592-2828 or Just Drop In!

151 Constitution Avenue, Brooklyn, Michigan 49230

Canton Retirement Centers Inc.

Birth Announcements

Katrina Elizabeth
Joe, Jeremiah, Joshua and James are pleased to welcome their new sister, Katrina Elizabeth. She arrived at Bixby Hospital on Friday, December 7, 1990. She weighed 7 pounds 1 ounce and was 19 3/4 inches long. Her parents, Joel and Karen Tobias, maternal grandparents Bill and Joyce Merriman and paternal grandparents Joe and Sally Tobias welcome Katrina to the family. Maternal great-grandparents are Merle and Annabelle Wright.

Carl Earlen Provey, Jr.
Carl E. Provey, Sr. and Charlene R. Provey announce the birth of their son, Carl Earlen Provey, Jr. on December 11, 1990 at 9:44 p.m. at St. Joseph Hospital in Ypsilanti. Carl Earlen weighed seven pounds four ounces and was 20 1/2 inches long. Grandparents are Mr. and Mrs. Edward P. Steele, Jr., Mr. and Mrs. Roger R. Provey, Jr., and Mr. and Mrs. Carl E. Mabry.

Treat All Levels Of High Blood Pressure

A recent study in the Journal of the American Medical Association found that patients with a blood pressure reading of 130 over 94 showed warning signs of cardiovascular problems and could be in danger of experiencing heart and blood vessel damage. The medical community generally defines hypertension as a blood pressure reading of, or higher than, 140 over 90, which is considered higher than 130 over 94. "Since doctors treat high blood pressure in many different ways, there is no clear answer as to how or when to treat 'borderline' patients," said Louis J. Riley, Jr., M.D., of Temple University. "Each patient must be assessed individually to see if other health factors are contributing to the blood pressure problem. A doctor needs to work with the patient to conclude how best to lower blood pressure with lifestyle changes or medication, or both." One thing is certain: High blood pressure should not be ignored. If left untreated, it can lead to heart attack, stroke, kidney and other organ damage, blindness or even death.

When treating hypertension, medical professionals will initially try non-drug approaches to lower blood pressure. Lifestyle changes such as regular exercise, cutting down on fat and sodium intake, and stopping smoking are all ways to help control blood pressure. If lifestyle changes alone aren't successful, physicians will then treat the condition with anti-hypertensive medications. Newer classes of drugs such as calcium channel blockers have proven effective. Calcium channel blockers have low side-effect profiles, which help to maintain a patient's quality of life. This is especially important when treating elderly patients who may already be suffering from other health concerns. In light of these new findings, people should regularly monitor their blood pressure and if it's high, consult with a medical professional to take steps to control the condition. Although there is no cure for hypertension, people can lead long and healthy lives when blood pressure is kept at a safe level.

Elects Officers



Washtenaw County's Senator Lana Pollack, and two members of the Michigan House of Representatives, Perry Bullard and Kirk Profit. Elected as county chair was Jean Ledwith King, long-time party activist and currently an alternate to the Democratic State Central Committee. Elected vice-chair was Richard E. Lane of Ypsilanti. The secretary elected was Diane Dogan of Ypsilanti. The treasurer, Robert White, was re-elected to his third term in that office.

Mens & Womens Complete Haircare
THE CUTTING EDGE
Stylists: Lisa Arnett, Dawn Moore
Mon.-Fri. 9-6, Sat. 8:30-12
Eves. by appt.
123 W. Michigan, Clinton 456-7900

Flags make Great Holiday Gifts
• State of Michigan
• Foreign • U of M
• E M U • M S U
flags and more!
FOX TENT AWNING CO.
617 S. ASHELY • ANN ARBOR • (313) 665-9126

Christmas Greeting

December 19 marks the 30th anniversary of the first radio voice broadcast from space. Transmitted from the U.S. Earth satellite Atlas, the message was a recorded Christmas greeting from President Dwight D. Eisenhower: "To all mankind, America's wish for peace on Earth and good will toward men everywhere."

Withrow Building Company
All Types Home Improvement
Quality Materials & Workmanship
Remodeling Additions Kitchens Doors Cabinets Spas
Roofing Decks Bathrooms Windows Siding Sunrooms
Call 313-428-7797

Garland's Pub
M-52—Austin Rd. Manchester
Open Monday-Saturday 7 am-2 am
Sunday 12 noon-10 pm
Live Band Fri. & Sat.
Call for details - 313-428-9293

MERRY CHRISTMAS
Accept our heartfelt thanks for your special kindness.
G. E. Wacker, Inc.
Wacker General Store

Season's Greetings
May Santa keep bringing happy holidays to you...merry and bright...filled with peace and good things. Accept our thanks.
R. D. Kleinschmidt Inc.
Kleinschmidt True Value Hardware

CHURCH DIRECTORY



EMANUEL UNITED CHURCH OF CHRIST — Rev. Paul Kuntzman, Senior Pastor, Rev. Nancy Doty, Associate Pastor; Sunday School 9:00 a.m.; Worship 10:15 a.m.; Coffee Hour & Fellowship 11:15 a.m.

MANCHESTER UNITED METHODIST CHURCH — Rev. Pegg Ainslie, Pastor; Sunday School 9:30 a.m., Worship 10:30 a.m. Office hours: Tue., Wed., Thurs. 8-11 a.m.

ST. MARY'S CATHOLIC CHURCH - Rev. Francis J. Murray, Pastor; Masses: Monday thru Wednesday, Friday 8:30 a.m., Thursday 7:00 p.m., Saturday 5:00 p.m.; Sunday 8:30 a.m. and 10:30 a.m.

FAITH COMMUNITY CHURCH — Scott Engelman, Pastor; 8400 Sharon Hollow Rd. off W. Austin; Worship Service 10:00 a.m.; Sunday School 11:15 a.m.; Sunday Evening Service 6:00 p.m.; Jr. and Sr. High Young People's Meeting 7:30 p.m.

VICTORY BAPTIST CHURCH - Rev. R. Dean Cooper, Pastor; 423 South Macomb, 428-7506; Sunday School 10:00 a.m.; Morning Worship 11:00 a.m.; Evening Public Bible Class 6:00 p.m.; Wednesday Praise & Prayer 7:00 p.m.

BETHEL UNITED CHURCH OF CHRIST - Rev. Roman A. Reineck, Pastor; Schneider and Bethel Church Roads; Church Service 9:30 a.m.; Sunday School 10:45 a.m.

SHARON UNITED METHODIST CHURCH - Rev. Erik Alsgaard, Pastor; Corner of M-52 and Pleasant Lake Roads; Church School 10:00 a.m.; Worship 11:00 a.m.; Bible Study 5:00 p.m.

ST. JOHN'S LUTHERAN CHURCH - Rev. Dennis A. Falk, Pastor; Austin Road, Bridgewater; Sunday School 9:15 a.m.; Worship 10:30.

NORTH SHARON BAPTIST CHURCH - Bill Winiger, Pastor; Clifford W. J. Whitenburg, Assistant Pastor; Sylvan and Washburn Roads; Sunday School 10:00 a.m.; Morning Church 11:00 a.m.; Evening Church 7:00 p.m.; Wednesday Bible Study 7:00 p.m.; Youth Meetings 7:00 p.m.

IRON CREEK COMMUNITY CHURCH - Tom Butterfield, Pastor; English and Sharon Hollow Roads; Sunday School 10:00 a.m.; Morning Church 11:00 a.m.; Sunday Evening 7:00 p.m.

ZION LUTHERAN CHURCH - Rev. Mark A. Weirauch; 3050 S. Fletcher Road; Sunday School 9:00 a.m.; Worship Service with Holy Communion 10:15 a.m.

ST. THOMAS LUTHERAN CHURCH - Rev. John Riske, Pastor; 10001 W. Ellsworth Rd., (5 miles North and 6 1/2 East of Manchester); Sunday School 9:30 a.m., Worship 10:45 a.m.

ST. JOHN'S UNITED CHURCH OF CHRIST - Rev. Ted Wimmier, Pastor; Rogers Corners, Waters and Fletcher Roads; Adult Bible Study Class 10:00; Worship and Sunday School 10:30 a.m.

CLINTON ASSEMBLY OF GOD - Rev. Richard Coury, Pastor; Chris Bouldrey, Youth Pastor; 13300 Clinton-Manchester Road, Clinton; Sunday School 9:30 a.m., Worship 10:45 a.m., Sunday Evening 6:30 p.m.; Wednesday Prayer, Bible Study, Youth 7:00 p.m.

CHURCH OF JESUS CHRIST OF LATTER DAY SAINTS (MORMONS) - Samuel M. Skidmore, Branch President; 1330 Frear Road, Chelsea; Sacrament 9:30 a.m., Sunday School, Primary 10:40 a.m., Priesthood, Relief Society, Aaronic Priesthood, Youth 11:40 a.m. For more information call 517-456-7876.

ZION LUTHERAN CHURCH
Saturday, December 22: 10:00-11:15am Sunday School Christmas Program practice
Sunday, December 23: 9am Sunday School, 9:30 practice for Christmas Program, 10:15 Worship, 7pm Sunday School Christmas Program
Monday, December 24: Family Candlelight & Communion Service
Tuesday, December 25: 9:15 am Christmas Day Worship with Holy Communion

EMANUEL UNITED CHURCH OF CHRIST
Thursday, December 20: 12 Noon Senior Meal, Christmas Celebration, 4:30 Weight Watchers
Friday, December 21: 7:30-9pm Live Nativity Scene Presented
Saturday, December 22: 7:30-9pm Live Nativity Scene Presented
Sunday, December 23: 9am Sunday School, 10:15 Worship, 11:15 Coffee & Fellowship, 7:30-9pm Live Nativity Scene Presented
Monday, December 24: 7pm & 11pm Christmas Eve Candlelight & Communion Worship
The Church Office will be closed December 24-January 1, 1991.

ST. MARY'S CATHOLIC CHURCH
December 20: 7:30 p.m. Communal Preparation
December 22: 11:30 a.m.-12 noon, 4:00-4:45 p.m. Individual Preparation
CHRISTMAS MASSES - Holyday
December 24: 5:00 p.m. preceded by Children's Choir Program at 4:30 p.m., 12 midnight preceded by Adult Choir program at 11:30 p.m.
December 25: 9:30 a.m. Congregational Singing
NEW YEAR'S DAY MASSES - Holyday
December 31: 5:00 p.m.
January 1: 9:30 a.m.

MANCHESTER UNITED METHODIST CHURCH
Thursday, December 20: 7pm Committee meetings, 8pm Ad Council meeting
Friday, December 21: 9am MFS
Sunday, December 23: 9:30am Sunday School, 10am Musical Christmas Worship
Monday, December 24: 7:30pm Family Christmas Eve Worship, 11pm Traditional Candlelight Christmas Eve Worship

BETHEL UNITED CHURCH OF CHRIST
Thursday, December 20: 5:45 pm Children's Choir, 6:30pm Choirs Potluck Supper-Rehearsal after
Sunday, December 23: 4th Sunday in Advent, 9:30am Worship Service, 7pm ALL Congregation Christmas Carol-In-Betweeners, sponsor lunch after caroling
Monday, December 24: 7:30pm Christmas Eve Carol Candlelight Worship Service

SHARON UNITED METHODIST CHURCH
Thursday, December 20: 6:30 pm Women's Christmas Potluck
Sunday, December 23: 11am Chancel Choir Christmas Program
Monday, December 24: 8pm Christmas Eve Candlelight Service

ST. JOHN'S
Thursday, December 20: 8pm Men's Bible Study at Clyde Kruger's
Sunday, December 23: 9:15am Sunday School, 10:30' Worship with Cantata, 7pm Youth Group
Monday, December 24: 8S Christmas Eve Program 7:30pm, 11:30 Candlelight Service

FAITH COMMUNITY CHURCH
Sunday, December 23: 10am Christmas Musical Program, nursery available, 11:15am Sunday School for all ages, 6pm Evening Fellowship Service, 7:15 Lifeline Christmas Party
Wednesday, December 26: 7pm Prayer Hour & Bible Study. No AWANA.

Music At St. Mary's
Each Sunday in Advent, Masses at St. Mary's have begun with the hauntingly beautiful hymn, "O Come, O Come Emmanuel." It has been played by instrumentalists and sung by the choirs and congregation. This medieval hymn, telling us to "Rejoice, Emmanuel shall come to thee...", will be played again on the last Sunday in Advent by recorder players Alexis Panches, Stefanie Schulz and Katie Busch at the 8:30 a.m. Mass, and flautist Ree Kyung Kim at the 10:30 a.m. Mass. Ms. Kim will also play movements from J.S. Bach's "Sonata for Flute and Harpsichord in G-Minor". She is a graduate of Han Yang University in Seoul, Korea, and has studied at Peabody Conservatory and at the University of Michigan. The children's choir at St. Mary's will sing a program of carols at 4:30 p.m. December 24 before the 5:00 p.m. Mass. Carols of many ethnic origins from medieval times to the present will be heard. Carols will also be played by instrumentalists: violinists Annie Hinkley, Jacqueline Palms, Nicky Puscus, and Sarah Wojtas; flautist Krista Sahakian; and, harpischordist Marjijm Thoenes. At 11:30 p.m., the adult choir at St. Mary's will sing a program of carols. A most unusual and rarely performed carol, "In the Town", will be heard. It is a sung drama. The inkeeper is sung by Diane DuRussel, Joseph by Guy Little and Mary by the soprano and alto sections. Also included in the program is the dance-like German carol, "Susanni", which will be sung by German-speaking members of the parish. The programs are directed and accompanied by Dr. Marjijm Thoenes. Fr. Francis Murray will preside at both Masses which will begin at 5:00 p.m. and midnight. In addition, a Christmas morning Mass will begin at 9:30 a.m. There will be congregational singing of the traditional carols. All are invited to come to any of the Masses.

Bethel Church 150th Anniversary
Lithophane Ornament
on sale now at The Flower Garden

'Tis The Season For Practical Gifts
GIFTS FOR YOUR PETS
COLLARS LEADS - TIEOUTS TOYS - BEDS DOG BISQUITS FEED & WATER DISHES DOG & CAT FOOD GUINEA PIG FEED
GIFTS FOR YOUR FAMILY & FRIENDS
GLOVES - ALL SIZES & STYLES BOOKS BY Ortho PLANTERS & FLOWER POTS PREPOTTED AMARYLLIS
COMPLETE LINE OF HORSE FEED & SUPPLIES
PEANUTS ROASTED - SALTED IN THE SHELL GIFT CERTIFICATES
ATLAS of Manchester
18875 WEST AUSTIN RD. MANCHESTER, MICHIGAN
Monday-Friday 9 am-6 pm Saturday 9 am-4 pm

CHELSEA FULL GOSPEL CHURCH
Pastors John & Sarah Groesser 475-7379
2 Corinthians 5:17 - "Therefore if any man be in Christ, he is a new creature (creation): old things are passed away; behold all things are become new."
Have you ever asked yourself, "Is this all there is to life?" Are you depressed, burdened by guilt? Don't give up! You can have a new beginning. Jesus died for you. He rose from the dead victorious over sin, sickness, poverty, and death. He did it all for you. You are a spirit, you live in a body, and you have a soul (mind, will, and emotions.) When you accept Jesus as your personal Savior and declare Him as Lord, (Romans 10:9) your spirit is reborn - recreated. God's life and nature are imparted into your spirit. Old things - sins and all your past life are removed, blotted out, and you become a new creation in Christ Jesus. No matter what you've done, Jesus' blood washes you white as snow. You may then boldly stand before Almighty God, call Him, "Father", ask for and obtain mercy and find grace to help for every need. You pass from death to abundant life. Make Jesus your Lord and Savior today! He's the God of new beginnings.
Services: Sunday: 10:00 a.m. Church School 11:00 a.m. Worship Service 6:00 p.m. Evening Worship
Wednesday: 7:00 p.m. Family Night
Currently Meeting: Lima Township Hall 11452 Jackson Rd - Just East of Chelsea
Come worship the Lord with us.

Village Council Minutes

December 3, 1990

The regular meeting of the Manchester Village Council was called to order with the Pledge of Allegiance to the Flag by president Kallewaard at 7:00 p.m. Council members present: Kallewaard, Wallace, Brooks, Kwolek, Becketl, Cooper, Gordon and Tucker. Also present: Carl Werner, Janet LaBeau Shurtliff.

The minutes of the November 19, 1990 meeting were approved as corrected on a motion by Cooper, support by Gordon. Ayes - all.

AGENDA

The agenda was approved as amended on a motion by Gordon, support by Wallace, deleting 9c)Ordinance Committee, 9e) Village Hall Maintenance, 9d)Parks Commission, 9g)Finance Committee, 9h)Planning Commission. Vote: Ayes - all.

CORRESPONDENCE

Nothing new received.

PUBLIC PARTICIPATION

Mr. Glenn Burkhardt of McNamee, Porter & Seeley was present to discuss status of sewer

separation project. He presented council with a list of upcoming events. Bids are to be received by January 15, 1991. Brooks questioned if request for bids would be included in local area publications. Clerk to mail copy of Village purchasing policy to Mr. Burkhardt. McNamee, Porter & Seeley will, at their expense, have their attorneys look into the possibility of interim financing. Council committee to meet with Glenn within the next two weeks to discuss project performance expectations. Becketl questioned whether downspouts tied to sewer lines should be removed. Glenn suggested an amendment to the sewer ordinance to accomplish this.

TREASURER'S REPORT

Motion by Wallace, support by Brooks, to accept the treasurer's report as presented. Vote: Ayes - all.

ACCOUNTS PAYABLE

Motion by Becketl, support by Brooks, to pay payables in the amount of \$48,315.80, deleting fuel surcharge from Laidlaw invoices until Village receives response to letter questioning this charge. Roll Call Vote: Ayes - all.

SHERIFF'S REPORT

Sgt. Werner was present to report on Officer Cornell's recent illness and anticipated return to work. He commended Gary Wiedmayer for his quick response. Becketl asked for council to issue a commendation to Gary Wiedmayer, letter to be placed in his file.

Becketl reported on attending a meeting with County Sheriff Department.

DPW REPORT

Kwolek reported on attending MARCC meeting. He gave council copies of Woodland Ordinance draft to review for next meeting. Kwolek questioned request for variance on Rhees property. Kallewaard to look into Plat Act.

Kwolek asked for enabling legislation concerning discharges into inland waterways. Clerk to research.

Discussion was held on recommendations for retention pond at Manchester Plastics. Kallewaard reported on meeting with Plastics personnel and that they were receptive to the idea and gave end of December as date for completion of new retention pond.

SOLID WASTE & RECYCLING

Gordon reported on meeting attended by Mary, Jane and herself with Chelsea and Resource Recycling representatives.

Council discussed proposed idea of "authority" to oversee and organize the recycling program. Next meeting is to be held on January 17, 1991.

OLD BUSINESS

Becketl asked for update on Village Oaks of Manchester. Kallewaard informed council of review by MISHDA and the CRC volunteering to help on a marketing study.

NEW BUSINESS

Kallewaard asked council to review her letter to the Manchester Township Planning Commission. Council approved the letter. Kallewaard to take to Township meeting this night.

Motion by Becketl, support by Wallace to adjourn at 9:20 p.m. Vote: Ayes - all.

Karen Tucker
Village Clerk

Christmas Bloodmobile

Just a reminder that the Christmas clinic will be held at the First Presbyterian Church in Saline. The church is located at 143 East Michigan. We had many donors sign up for this clinic at the October bloodmobile, however, if you want to give you can call the chairperson of the day, Mrs. Wilma Trachet at 429-7868. The time of the clinic is from 9:00 a.m. to 1:00 p.m. The date is December 22. All the donations from this clinic go to Mott Children's Hospital.

BUY IT. SELL IT. FIND IT.
CLASSIFIED.

Board of Education

REGULAR MEETING SUMMARY
December 17, 1990

Not Official Minutes

The meeting was called to order at 7:48 p.m. by President Sahakian with the Pledge of Allegiance.

Members present: Sahakian, Kluwe, Turk, VanBogelen.

Members absent: Gilbert, Gordon, Gaughan.

The minutes of the regular meeting of November 19, 1990

were approved as presented.

The financial report and bills payable were approved as presented with a cash balance as of November 30, 1990 in the amount of \$461,888.42. Post approved bills payable of \$413, 331.78.

CORRESPONDENCE

President Sahakian received a letter from the Manchester Village clerk requesting that Manchester Community Schools absorb a portion of the cost for school crossing guards. She passed the letter on to Superintendent Niedzwiecki who will discuss the matter with the village clerk.

NEW BUSINESS

Superintendent Niedzwiecki reported that transportation procedures are being reviewed in reference to transporting students on half days, requests of parents to have their children dropped off at a stop other than their regular stop, and responding to a lost child situation. He also stated that the transportation department is in the process of developing a parent handbook.

The high school Spanish club has been recognized as a Schedule B activity under the Master

Carpentry, remodeling & renovation



TED MICKA
Specializing in Old Homes
(517) 536-4371

Agreement with the WLEA/MEA.

The resignation of Elvin Johnson as middle school volleyball coach has been accepted with regret, and becomes effective immediately.

The Board moved to the General Session of the agenda.

Dr. Michael Emlaw, Superintendent of Washtenaw Intermediate School District, was presented to update the Board on the Washtenaw Education for Employment Project (WE-2) and the progress of the task force of educators and business representatives.

ADVOCATES' REPORT

The Advocates' Report this month was presented by Manchester Community Schools' counselors and centered on "counseling services" in the elementary - Mr. Bill Kindt, middle school - Mr. Phil Mains, and high school - Mr. Dick Parson.

DISCUSSION ITEM

Mr. Randy Van Gasse, Director of Student Services and Athletics, presented the annual report on the fall sport season.

Superintendent Niedzwiecki apprised the Board on the progress of the Planning Committee. He stated that the committee has agreed to meet twice a month in the future. Scheduled meetings to date are: Wednesday, January 9; Wednesday, January 23; Wednesday, February 6; and Wednesday, February 20. All meetings begin at 7:30 p.m. and are held in the high school library.

The meeting was adjourned at 10:08 p.m.

Protecting your health
Drinking and driving? DON'T!
Public Service Information from the American College of Surgeons

George F. Sheldon, MD, FACS,
Professor and Chairman of the Department of Surgery,
University of North Carolina, Chapel Hill, and a member of the Board of Regents of the American College of Surgeons,
discusses some practical ways to avoid getting behind the wheel if you've ever had "just a few" social drinks.

Dr. Sheldon

Did you know that by drinking—even a small amount—and driving, you will have greatly increased your odds of becoming a victim of an accident, or the perpetrator of one?

Recent data released by a national public awareness organization indicates that for drivers with a blood alcohol content (BAC) above 0.15 percent on weekend nights, the likelihood of being killed in a single-vehicle crash is more than 380 times higher than it is for non-drinking drivers. Additionally, 59 percent of the adult pedestrians killed in nighttime crashes with motor vehicles in 1989 had high BACs—0.10 percent or greater.

According to these statistics, the likelihood of having a crash increases significantly with a BAC of 0.05 percent, and it climbs rapidly after it reaches 0.08 percent. For example, four drinks consumed during an hour will raise the BAC level of a 150-pound person to about 0.10 percent—the legal limit in most states. And, the ability to drive safely will still be affected for up to four hours later.

Added to these facts is the increased risk of drinking and driving on holidays. An obvious time to celebrate, holidays log grim statistics of their own. Of the 536 fatal traffic accidents reported during Christmas of 1989, 328 were alcohol-related. And nearly 50 percent of the 1989 Fourth of July traffic fatalities were attributed to alcohol.

Have you ever been out with friends and had a few "social" drinks? Maybe it's New Year's Eve. Or a night out on the town with friends. A party. You have a

drink or two to celebrate, but now you face the prospect of driving home. Although you are not drunk, you have recently consumed alcohol and, therefore, are not considered to be a completely sober individual. So, instead of getting behind the wheel after having had a little too much to drink—and possibly becoming another statistic—there are some options you should consider because they may save your life and the lives of innocent victims.

When going out in a group, plan to drive together. Then choose one person in the group who will remain perfectly sober in order to safely drive everyone else home at the end of the evening. He or she will be your designated driver. Rotate that responsibility each time drinking is involved when the group goes out. Bars and other establishments that serve alcohol are increasingly becoming more involved in promoting this idea by offering free soft drinks to those who have the distinction of being the designated driver.

However, you might not be fortunate enough to have a sober friend who is willing and able to take you home. That does not mean that you have to drive your car home. Leave it. Leave your car where it is parked and call a cab. Most likely your car will still be there in the morning. But with fatal alcohol-related crashes being three times greater at night than during the day, you might not be around if you drive after you've consumed a few drinks.

With all the odds stacked against a person who drinks and drives, doesn't it make sense to take precautions to prevent a drinking-and-driving accident from even happening in the first place? Remember, even small quantities of alcohol can impair and distort a driver's perception—the sobering statistics tell the story.

For a resource list of organizations that provide public information on drinking and driving, write to: American College of Surgeons, Dept. SC1-90, 55 East Erie Street, Chicago, IL 60611. And, if you have general questions about common surgical procedures, contact the American College of Surgeons, Office of Public Information, at the above address.

Joy to ALL!

Christmas cheer in full measure to friends and patrons. Thank you for letting us serve all of you during the past year.

Larry Becketl
Your Farm Bureau Agent

Greetings

May your home be filled with cheer through this festive holiday season and the days yet to come.

Corky D's

NOEL...NOEL
Joy to the world, for Christ is born in Bethlehem.

Alber Orchard and Cider Mill

MERRY CHRISTMAS

Peace
To one and all, the abundant blessings of Christmas joy.

Happy motoring friends and all the happiness of the season.
TIRB
Chevrolet and GEO

Season's Best

In the spirit of this holy season, may you and your family share the joys of Christmas in fullest measure. Thanks for your patronage.

SUTTON AGENCY

Peace
To one and all, the abundant blessings of Christmas joy.

Carpentry, remodeling & renovation

TED MICKA
Specializing in Old Homes
(517) 536-4371

Season's Greetings
May the festive spirit be delivered to your homes during this, the merriest of seasons. Have a wonderful holiday.

MANCHESTER OPTIMIST CLUB

Yuletide Greetings

You've made it a pleasure to be of service.

Dan's Westside Automotive

Merry Christmas

All signs indicate a happy holiday season.

The Flower Garden

CHRISTMAS CHEER

An Old-Fashioned Greeting to Wish You A Happy Holiday.

Manchester Stamping Corp.

Village Planning Commission

REGULAR SESSION
November 13, 1990

ROLL CALL

Present: Daverman, Lowery, Palms, Little, Walton, Way, Gleason, Hinkley (entered at 7:53). Absent: Schiller. Also Present: Deb Havens and Sybil Kolon.

CALL TO ORDER

The meeting was called to order at 7:45 by Chairman Daverman in the Council Room of the Village Hall.

APPROVAL OF AGENDA

The following changes were made in the agenda: Under Regular Business: Table Group Homes (Schiller not present).

Add under New Business: Manchester Manor Mobile Home Park; check materials submitted for final site plan.

Add under New Business: Pilot Industries Sign; questions concerning backlit awning.

Lowery made a motion to accept the agenda with the above revisions. Way seconded the motion. The motion passed on a voice vote.

MINUTES FROM PREVIOUS MEETING

Enter Hinkley at 7:53 p.m. Little made a motion to accept the minutes. Palms seconded the motion. The motion passed on a voice vote.

REPORTS

Letter from council concerning the general development plan.

REGULAR BUSINESS
WOODLANDS PROTECTION ORDINANCE REVIEW

Daverman noted that there is a need to make sure the code reference numbers used in the ordinance coincide with our code. Little volunteered to check this. Little noted application forms were needed, and, under Definitions, recommended the addition

of "Permit guarantee" means... Sybil Kolon, who has a degree in forestry, made a rough map of the village and noted that approximately 12% was heavily wooded, 22% was lightly wooded and 12% was agricultural. Almost half of the village is undeveloped. She emphasized these were only rough approximations. Kolon informed the commission that mapping is usually done from aerial maps followed by a ground check of the larger parcels.

The ensuing discussion included the following:
1. Concern was expressed over the cost to property owners wishing to develop their property.
2. The enforceability of the ordinance was questioned.
3. The possibility of including a "grandfather clause" into the ordinance was mentioned.
4. The question was raised as to "who" this ordinance would apply to: single family, subdivisions, all property owners, only parcels of a certain size. This needs clarification.
5. The question was also raised concerning how much of the village would fall under such an ordinance.

6. Concern was expressed over the "workability" of such an ordinance.
7. It was stressed that the purpose of this ordinance was to encourage developers to work around trees as much as possible, not to discourage development.
8. Concerns were expressed over the requirements for replacement trees in that they might be too stringent.
9. Commissioners felt the woodlands ordinance should be a part of the site plan review process. Yet concerns were voiced over the removal of trees in cases which would not require a site plan review.
10. Other clarifications recommended for the ordinance dealt with the number of trees a property owner can remove each

year without having to obtain a permit. It was noted that the lot size was not delineated. Example: Three trees greater than 8 d/b/h can be removed per "what" Lot?, acre?

11. It was suggested that single family lots of 1 acre or less be exempt from this ordinance.

12. Kolon suggested the Basal Area Factor method be used to determine tree density (heavily or lightly wooded).

As a result of the discussion, it was decided that Palms and Daverman will work on writing up a "purpose" for the ordinance tailored to this community, and present it to the commission at the next regular meeting for review. Palms will also check into information on forest management. Sybil Kolon will further investigate the use of the Basal Area Factor.

Palms made a motion to recommend to council they hire Sybil Kolon to draw up a rough draft (preliminary) of a woodlands map of the village, thereby providing data to assist the planning commission in developing a woodlands protection ordinance. This work must be quoted to village council and approved by council prior to authorization to proceed. Little seconded the motion. The motion passed on a voice vote.

Daverman made a motion to table the woodlands protection ordinance until the next regular meeting. Hinkley seconded the

motion. The motion passed on a voice vote.

Hinkley suggested the commission proceed to the public hearing.

PUBLIC HEARING, 107 Union Street; Re-Zoning Request from C-2/R-1B (50/50) to R-1B
The regular meeting closed at 9:25.

The notice of the public hearing was made on October 25, 1990 and placed in the Manchester Enterprise.

There was no audience participation. The commission did not receive any written correspondence concerning this re-zoning request. The main points concerning this re-zoning request are as follows:

1. The parcel at present is "split zoned", one-half of the parcel being zoned commercial (C-2) and the other half residential (R-1B).
2. Due to the "split zoning" of this parcel, the property owner is unable to obtain mortgage approval.

Hinkley made a motion to close the public hearing. Daverman

seconded the motion. The motion passed on a voice vote. The public hearing closed and the regular meeting resumed at 9:37 p.m.

PETITION FOR RE-ZONING: 107 UNION STREET

Hinkley made a motion to recommend to council to approve the re-zoning of 107 South Union from C-2/R-1B to R-1B. Walton seconded the motion. The motion passed on a voice vote.

MASTER PLAN

Daverman read the letter the commission received from council (written by Kwolek). This letter expressed concerns over bringing in outside professionals to assist in finishing the master plan, and made suggestions for task completion.

Daverman also read his letter to the Manchester Chamber of Commerce regarding the general development plan. There were no objections to this letter being sent to the Chamber. Hinkley suggested inviting the Chamber of Commerce to a workshop. It was

Continued on Page 9

Village Planning Commission

also suggested that similar letters be sent to the school board, MARCC, Community Resource Center, police department, Recreation Task Force, DPW and the fire department.

Palms expressed concern over certain aspects of the letter from Kwolek, including a perception of lack of support. He discussed Manchester Township's method of working on their master plan. He noted they are under professional leadership and have a definite outline and timetable set up. He felt there is a need for leadership in the "how" of the master plan process. Palms stressed that it is council's responsibility to finance the master plan. The commissioners agreed that council needs to budget for this process. Daverman recommended that the commission write up a proposal which clarifies what specifically needs to be done.

It was suggested that Hotaling be contacted and asked how much he would charge to finish up work on the master plan in conjunction with the planning commission. It was noted that working with Hotaling would maintain continuity since he has done preliminary work for the master plan. The master plan ad hoc com-

mittee will attend the next council meeting to express the planning commission's concerns on completing the general development plan.

MANCHESTER MANOR MOBILE HOME PARK: FINAL SITE PLAN RESUBMISSION
Commissioners quickly checked the materials submitted to see what new information had been sent.

Exit Walton and Lowery at 10:20.

PILOT INDUSTRIES SIGN

Little questioned whether Pilot Industries could backlit their awning. After a short discussion, Daverman made a motion, seconded by Hinkley, to permit a backlit illumination of the wording "Pilot Industries" and logo only. The illumination shall be turned off 11:00 p.m. to 6:00 a.m. per 3.3(d). The intent of the sign ordinance is that backlit awnings are prohibited in the Historic C-2 District. The motion passed on a voice vote.

ADJOURNMENT

Daverman made a motion to adjourn the meeting. Hinkley seconded the motion. The motion

Manchester Township

REGULAR BOARD MEETING
December 10, 1990

PROPOSED SYNOPSIS of the Regular Meeting of the Manchester Township Board held December 10, 1990:

The meeting was called to order at 8:00 p.m. by Supervisor Mann. Board members present: Mann, Clerk Hakes, Treasurer Uphouse, Trustee Macomber, Trustee Widmayer (entered at 8:03 p.m.), Sybil Kolon was also present (entered at 8:10 p.m.).

Various minutes were accepted and approved. Bills that had been paid since last meeting were presented. The treasurer reported that the tax bills have gone out. There is \$18,107.05 in the general fund. Approval was given for payment of bills totaling \$9,004.13.

Mann reported on his inquiries regarding phone systems. Approval was given to go ahead with updating the office phones.

Sybil Kolon was present to update the board on recent recycling meetings she has attended. The Western Washtenaw Recycling Consortium met two weeks ago with its main emphasis being on the grant, structure of the consortium, and methods of financing the project. Manchester Township will host the next meeting on Thursday, January 17, 1991. Sybil also commented on her attendance at the Washtenaw County Solid Waste Consortium, and a committee formed to examine local ordinances on littering and blight.

Township Planning Commission's public forums regarding the general development plan update were discussed. Their next meeting will be January 7, 1990. Various correspondence and reports were presented, including a letter from the Village of Manchester to the Planning Com-

mission and chairman Kellum's response; and Constable Moore's monthly report and certificates of achievement earned at the winter conference and training seminar of the Michigan Constable and Court Officers Association.

An application for PA #116 (Farmland Open Space Preservation Act) was approved by the Board after having been approved by the Soil Conservation District and the Washtenaw County Planning Commission.

There being no other business, the meeting was adjourned at 9:45 p.m.

Submitted by
Kathleen M. Hakes
Approved by
Ronald E. Mann, Supervisor

Farmland Value Rises

The Federal Reserve Bank of Chicago recently reported that farmland values in five mid-western states showed a modest uptrend this summer. "To see Michigan farmland values increase by one percentage point during the summer months is certainly encouraging," said Michigan Farm Bureau economist Bob Craig.

"What we're seeing, though, is that farmland is barely keeping up with the rate of inflation, so while it certainly is positive and heading in the right direction, we're not seeing farmland values growing at any huge rates," Craig said.

He noted that farmland values will be affected by the impact of the 1990 Farm Bill and the results of the negotiations over the General Agreement on Tariffs and Trade.

Township Planning Commission's public forums regarding the general development plan update were discussed. Their next meeting will be January 7, 1990.

Various correspondence and reports were presented, including a letter from the Village of Manchester to the Planning Com-



Kleinschmidt Hardware
19860 Sharon Valley Rd. Manchester, MI
Monday-Friday 7 a.m.-6 p.m. Phone 313-428-8337
Saturday 8 a.m.-5 p.m. Sunday 10 a.m.-4 p.m.

Christmas "Clearance" Sale Prices Good Thru Mon. Dec. 24
Open Mon. Dec. 24 7 a.m.-3 p.m.

ALL TOYS
33% - 60% OFF REG. PRICE
WHILE THEY LAST!

Trim-A-Tree Items
50% OFF Reg. Price
Includes: Artificial Trees, Garland, Ornaments and Wrapping Paper

Wacker's General Store

Homemade Brand Ice Cream
Regular & Light Flavors
\$3.29 1/2 Gal.

G.E. Wacker Inc.
Gasoline-Fuel Oil-Greases
Motor Oil-Diesel Fuel
9050 Chelsea-Manchester Rd.
Manchester, Mich. 48158
WINTER HOURS
Monday-Thursday 7 am-8 pm
Friday 7 am-9 pm
Saturday 8 am-9 pm
Sunday 9 am-8 pm

merry Christmas

As the year draws to an end, it is time to celebrate with friends and family. Your friends at Manchester Electric wish you well and hope you have a safe & happy new year.

Merry Christmas

PHONE 313-428-8955

Bradley W. Taylor, O.D.
Optometry

COMPREHENSIVE EYE EXAMS
CONTACT LENS - PEDIATRIC VISION

227-EAST MAIN STREET
P.O. BOX 355 MANCHESTER, MICHIGAN 48158

HAPPY YULETIDE

To our dear friends and kind patrons, may you enjoy a very special holiday.

K & W Equipment Inc.

The 18th Century Shoppe
Antiques And Gifts For The Country Home

- Mary Emmerling books and calendars for 1991
- Sundials, bee sheps, and herb garden accessories
- "The Magical World of Tasha Tudor" - books, cards, signed and dated lithographs
- Christmas music featuring the celtic harp and hammered dulcimer
- Rosewater, herbs, and teas from United Shaker Society in Maine

Open Thurs.-Sun. 12-5
Friday evenings until Christmas to 9 p.m.
Open Christmas Eve day 10 a.m. til?
In The Mill
Sandy Trolz - Shopkeeper
428-7759 or 428-7060

Merry Christmas and Thank You to all my customers for another great year!

TOTAL FITNESS OUTLET 475-1900
120 W. Middle St. Chelsea

Open for Christmas Shopping!
Monday-Thursday 6 a.m.-9 p.m.
Friday: 6 a.m.-8 p.m.
Saturday: 9 a.m.-8 p.m.
Sunday: 9 a.m.-5 p.m.

The waterproof breathable
Helly-Tech® by Helly-Hansen®

Gift Certificates are guaranteed to fit everyone!!!

Strikes N Spires

Jolly Keglers

Dutch Country Kitchens	73	32
Manchester Automotive	69	36
Bollinger Sanitation	53 1/2	51 1/2
Manchester Car Wash	51	54
Robertson-Morrison	51	54
Carol's Cut-N-Curl	48	57
Manchester Tool & Die	37 1/2	67 1/2
Grass Lake Automotive	37	68
INDIVIDUAL GAME		
W. Yarb	199	
S. Merriman	198	
M. Freeman	194	
INDIVIDUAL SERIES		
K. Richardson	501	
S. Merriman	497	
M. Freeman-J. Merriman	495	
HIGH TEAM GAME W/HDCP		
Carol's Cut-N-Curl	954	
Bollinger Sanitation	905	
Manchester Tool & Die	897	
HIGH TEAM SERIES W/HDCP		
Carol's Cut-N-Curl	2692	
Manchester Automotive	2548	
Bollinger Sanitation	2539	

Manchester Town Club

Cooks	67	38
Thompsons Pizzeria	65	40
P.W.S. Windshield Repair	58	47
P.M.S.	57	48
Steve Walz Construction	56	59
Gemini	53	52
Klinks Excavating	53	52
Wampler Construction	45	60
Tidy Toms	41	64
200's		
Darlene Scovell	202	
500's		
Debbie Klink	532	
Terri Scherd	504	
HIGH INDIVIDUAL GAME		
Pat Hanselman	234	
Terri Scherd	226, 224	
Donna Dault	221	
HIGH INDIVIDUAL SERIES		
Terri Scherd	584	
Donna Dault	572	
Pat Hanselman	553	
HIGH TEAM GAME ACTUAL		
Steve Walz Construction	799	
HIGH TEAM SERIES ACTUAL		
Cooks	2214	
HIGH TEAM GAME HDCP		
Steve Walz Construction	786	
HIGH TEAM SERIES HDCP		
Cooks		

Kicking The Habit

Maybe you can't chew gum and drink coffee at the same time! It may be good to the last drop, but if your nicotine gum doesn't seem to be working, you should probably can the coffee, at least for a few minutes.

Hold off on other drinks, too, like colas, beer, fruit juices and other acidic beverages, suggests scientists from the National Institute on Drug Abuse (NIDA). They may be setting you back in your efforts to "kick the (smoking) habit," their recent study shows.

In an effort to quit, thousands of smokers have, in recent times, turned to nicotine gum, a nicotine based (prescription) medicine that helps reduce tobacco withdrawal symptoms, yet still allows some absorption of nicotine, without most of the detrimental health effects of cigarettes.

Nicotine and caffeine have long held a special relationship. Many smokers light up with the coffee cup only a short reach away. Yet the nicotine gum ("Nicorette") as a substitute, along with that cup of coffee, doesn't work for everyone. National Institute on Drug Abuse researchers may have uncovered one reason why.

Dr. Jack Henningfield, Chief of the Clinical Pharmacology Branch with NIDA's Addiction Research Center (ARC) in Baltimore, and colleagues at the ARC, Chandler Medical Center, and the University of Lexington, reported recently that coffee markedly reduces the acidity of saliva in the mouth. This, in turn, severely limits the amount of nicotine normally absorbed when the gum is chewed.

"The subjects we tested received little or no nicotine absorption, therefore no benefits, when they rinsed their mouths with coffee prior to using the nicotine gum," said Dr. Henningfield. "The same effect can be seen with cola drinks, and we

believe it applies to any number of acidic drinks that many of us enjoy on a day-to-day basis," said the expert on nicotine research. The neutralizing effect lasts for at least 15 minutes, Dr. Henningfield added.

Citing the finding as potentially important for many, Dr. Henningfield is cautious not to downplay the therapeutic role of the gum in smoking cessation, citing it as the only effective, proven drug treatment to curtail smoking, the leading cause of premature death in the U.S.

"Nicotine gum can be an excellent therapy for many smokers," Dr. Henningfield said. A few concepts need to be kept in mind, however, he pointed out. "What we're saying here is not to drink any acidic substance for at least 15 minutes prior to chewing the gum," advised the NIDA scientist. A safer bet? "Don't drink anything at all around the time you're going to chew," the researcher advised. "You can still have your morning coffee and juice, just time it appropriately around your nicotine gum. You may then find the gum fulfills your physical need for nicotine quite adequately."

Environmental Safety

It has been estimated by the National Safety Council that more than 30,000 hazardous fireplace fires occur each year, many of which can be prevented. Here are some helpful tips that can help you enjoy your fireplace safely.

- Never use your fireplace as an incinerator. Don't throw waste wrappings into the fire.
- Always use a protective fire screen when using your fireplace.
- Never leave children near an unattended fire.
- Don't go to bed at night or leave the house unless you're absolutely certain that the fire is completely out and the ashes have cooled.
- Dispose of fireplace ashes safely in a metal container with a lid.
- To prevent a chimney fire, make sure you have your chimney inspected every one or two years.
- In the event of a fire, put it out with an extinguisher or sand. Should the fire get out of control, leave your house immediately and call the fire department.
- Always follow instructions on how to properly use manufactured firelogs. Never burn more than one firelog at a time.

Santa Claus



Whether it's Santa Claus who fills your stockings, or Kris Kringle, Pere Noel, or St. Nicholas, there's probably a lot about that "jolly old elf" that might surprise you.

For instance, the original Santa Claus is believed to have been a bishop in what is now Turkey in the fourth century. Generous and wealthy, he's said to have secretly given bags of gold to poor children.

He got his "cheeks like a rose, his nose like a cherry," and the names of his "eight tiny reindeer" from Clement Moore, a noted biblical scholar who wrote A Visit From St. Nicholas (beginning "Twas the night before Christmas...") in 1822. Famous cartoonist Thomas Nast drew the red suit and white beard we know today.

Kitchen Safety For The Holidays

During the holidays, your kitchen gets a real workout. Out come the appliances that are only used a few times a year: the coffee urn, the electric carving knife, bunwarmers and hot plates. It's a hectic time when it's important that everything goes smoothly - so don't let carelessness with those electrical appliances turn a festive time into a tragedy.

Underwriters Laboratories, Inc. urges you to follow these kitchen safety tips for a safer holiday season:

- Save and reread operating instructions for rarely-used appliances. You may have forgotten something important.



MERRY CHRISTMAS
Wishing you the pleasures of a real old-fashioned, family holiday.

PINNACLE ENGINEERING

Old Sewanee To Celebrate

putting up the stone buildings had not been started.

The soldiers saw the marble cornerstone and at once became inquisitive. The stone was blown open with gunpowder, and the papers that Bishop Polk had placed there were abstracted. The wooden huts were set afire, and nothing remained to mark the site of the Sewanee university but ashes.

During the war Bishop Polk, at the head of a Louisiana regiment, was killed. When the war was over the trustees again took up the work of building the university. They found that the fortunes of those who had promised the \$3,000,000 of endowments had been dissipated. There were no funds with which to continue the work.

Discouraged, the trustees concluded to abandon the idea. Under the grant by which they came into possession of the forest land, they would lose title if no buildings were put up by the fall of 1868. Bishop Quintard realized that Sewanee was doomed unless something was hurriedly done.

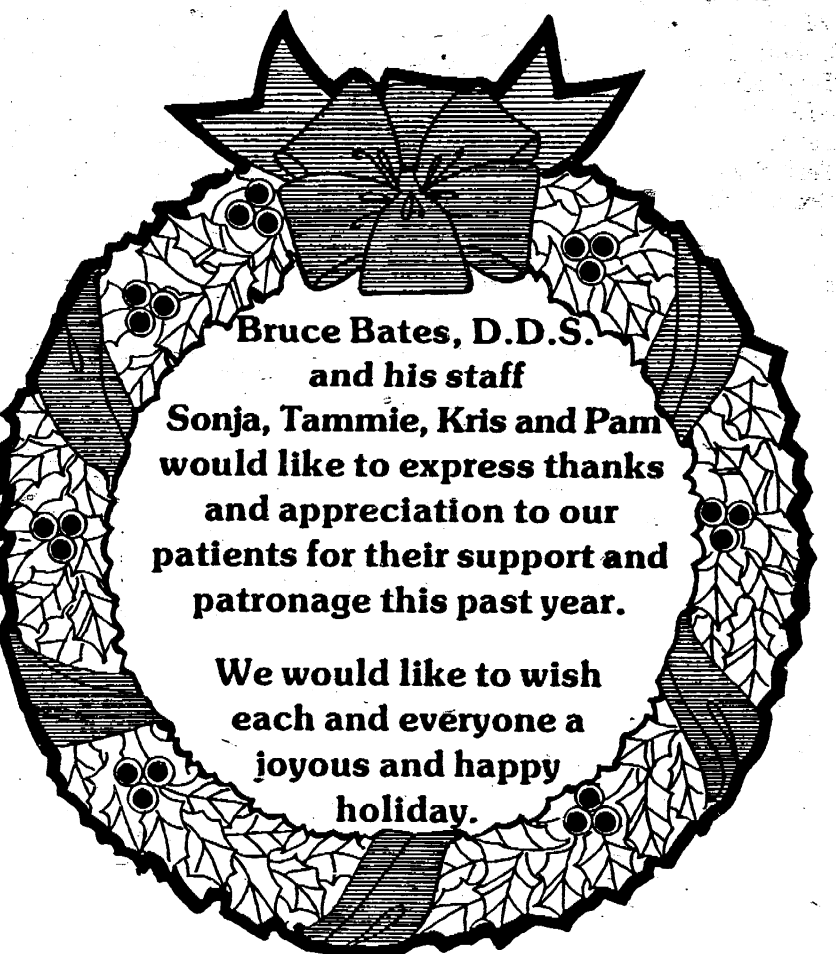
Three days before possession would have passed from the trustees, the bishop and two others went up to the mountain and planted a rustic cross, after

the fashion of the warriors under William the Conqueror. The next day they hastily nailed together two rough huts, and the day after that the University of the South was an established fact.

The bishop and his two conferees sent for their sons, and for a year the boys were the only students of Sewanee. In the meantime, the trustees had got more funds and stone buildings were beginning to assume shape. Inside of two years there were half a dozen fine structures in that wilderness with several professors and 50 students.

Now Sewanee has an average of 550 students every year. Its domain has been beautiful and to-day the grounds are among the finest to be found in the world. There are magnificent residences for the professors while many of the friends or alumni of the university have houses on the grounds and live there the year around. One of the things on which Sewanee prides itself is this community. The university population, outside of the students, is over 1,000.

Buy, Rent, Sell Thru The Classifieds



*Warmest wishes for
the Holidays and
the New Year to come.*

FIRST OF AMERICA



From our house to yours...Merry Christmas.

T & N SERVICES

Licensed & Insured Contractor
24 Hr. Emergency Service

Stein Electric Co., Inc.
AG. • COMMERCIAL • INDUSTRIAL
INSTITUTIONAL • RESIDENTIAL
MOTOR CONTROLS & LIGHTING

RICK GRAUSTEIN
MANCHESTER, MI 48158
(313) 428-9050

MERRY CHRISTMAS
and to one and all we send
warm greetings and sincere best wishes!

VILLAGE GIFTS
Barbara, Donna and Melanie

50% Off Sale-Wed. Dec. 26th
134 East Main St. 313-428-9640 Manchester

**Pick a card...any card
...it's to your credit!**

**BACK DOOR PARTY STORE
accepts any oil
credit card...**

*with your request for a
Unocal Credit Card!*

Tired of the confusion over extra charges and special fees everytime you visit a local service station? Your participating Unocal dealer eliminates the cash or credit hassle in one simple step. For a limited time, you may use any current oil company credit card to apply for a Unocal Credit Card. Your signature is your automatic request for a brand new Unocal credit card. You'll discover it's the same price...cash or charge... because we want your business. When it comes to credit, Unocal has the best card game in town.

**Same price...Cash or Credit
Come in Today!**

UNOCAL
GO WITH THE SPIRIT • ACROSS THE U.S.A.
1 2345 6782 001 8
JOHN L. CUSTOMER
ESTABLISHED SINCE 1946 • GOOD THRU DEC 1985

76 Go with the spirit... The Spirit of 76!

Back Door Party Store
500 Ann Arbor St. Phone 313-428-9287 Manchester, MI

Merry Christmas

During this especially glad time of Christmas - We extend our best wishes to you and yours.

MANCHESTER TOOL & DIE

Money Management

DRIVING INTO THE WORLD OF BUSINESS CAR DEDUCTIONS

You may know where to find the distributor cap in your business car, but do you know where to find your business car deductions? If you're not sure, park yourself in a comfortable chair and browse through the following tax tips provided by the Michigan Association of Certified Public Accountants.

Unreimbursed employees' transportation costs are considered miscellaneous itemized expenses. As you probably know by now, such expenses are deductible only to the extent that they exceed 2 percent of adjusted gross income. Transportation expenses of a self-employed person, however, are not subject to the 2 percent floor.

If you drive your car for both business and personal use, you must allocate your expenses between the two forms of travel, so be sure to maintain thorough records.

Defining Business Use

Driving a car for business use generally means traveling between two places of business. A recent IRS ruling may also enable you to claim travel from home to the first business stop of the day as a business expense. For example, a management consultant who has a fixed business office may often have early morning appointments that require her to drive directly from home to a client's office. The key is that the client's office is considered a temporary business location. Since this is a recent tax change, you should consult your CPA to see if it applies to your situation.

One important fact to keep in mind is that commuting to and from work is not considered business use. The IRS defines commuting as travel from your residence to your first job location of the day and from your last job

location to your home. And for those of you who have equipped your car with a cellular phone, take note that doing business on your car phone or discussing business with associates on the way to and from work does not allow you to define your trip as a business expense.

Methods For Deducting Expenses

When you deduct automobile expenses, you have two options: You may claim the standard mileage rate, which allows you to deduct a fixed amount for each business mile you drive, or you may deduct the actual costs of operating your car. Using the standard mileage deduction is the simpler of the two methods since you simply keep track of the business miles you drive during the year and multiply the total by the standard mileage rate. For 1990, the standard mileage rate is 26 cents per mile.

The actual cost of using your car may exceed the amount allowed by the standard mileage rate. If you use the actual-expenses method, you may deduct a percentage of your automobile expenses equal to the percentage of mileage attributable to business. By keeping track of your business mileage and comparing it to your total mileage, you can determine what percentage of your car's use is for business. For example, if your total mileage at the end of the year is 20,000 miles and your records show that 15,000 miles of that was for business, 75 percent of your car expenses are deductible.

What Can You Deduct?

If you use the actual-expenses method, you may deduct an amount for depreciation. The method you use and the amount you can deduct depends on a number of factors, including when you first began using the car for business and how much of your mileage is attributed to business use. In addition, you can deduct a host of other expenses. Some of

the most common deductible automobile expenses are: automobile club memberships, batteries, gas and oil, insurance, tune-ups, repairs, registration and licensing fees, supplies (such as antifreeze) temporary rentals, washing and waxing.

Whether you deduct actual expenses or use the standard mileage rate, you may also deduct parking fees and tolls paid in connection with the business use of your car. If you are an employee and you take out a car loan, the interest you pay is considered personal interest - and that means you will be able to deduct only 10 percent of your interest charges for 1990. Next tax season, the deduction will no longer exist.

Tracking Expenses

Keeping good records is a must regardless of which method you use to calculate your transportation costs. Use a logbook and be sure to keep it up to date. In addition to recording the distance driven on business each day, you should note the business purpose of the trip, the names of the persons you saw, and any expenses for which you did not get a receipt.

CPAs point out that the IRS forms you use to deduct your expenses depend on whether you are an employee or are self-employed. If you are self-employed, you deduct your auto expenses on Schedule C. If you are an employee, you use Form 2106 to claim automobile and other employee business expenses. If you use the actual-cost method, you will need to complete Form 4562 to compute the allowable depreciation.

Year End Tax Planning

"It's not too late to save money on federal taxes for 1990," said IRS district director John Hummel. "Some year-end planning can help Michigan taxpayers reduce their tax bill," he said.

Hummel advises paying off credit cards in 1990. "This year, 10% of the interest paid on credit cards, car loans, or other personal loans, is deductible. In 1991, there is no deduction for personal interest expenses."

"Also, since this is the time for holiday giving and sharing, taxpayers should consider cleaning out the garage or attic and donating items to charities that help the needy," Hummel said. "The fair market value of these items is deductible as a charitable contribution."

Hummel also said that those individuals who will receive Christmas, or year-end, bonuses, could consider having the payment delayed until 1991. "For a taxpayer who expects less income in 1991 than in 1990 (for example, people who are retiring at the end of 1990), it makes sense to receive the income (the bonus), and pay the tax on it, in 1991. Less earnings, or income, equals less tax," Hummel added.

"Individuals can also benefit by lumping deductions into one year - either this year or next - depending on income," said Hummel.

"Another very important thing that all taxpayers should do right

now is take a look at how much federal income tax was withheld from their pay during 1990. If the amount withheld is less than 90% of the estimated total tax bill, then an estimated tax payment must be mailed to the IRS by January 15, 1991.

"The January estimated tax payment is very important," Hummel said, "because if the taxpayer has not paid 90% of the estimated tax before filing the return in April, a penalty may be assessed," he said.

"We are certainly ready to help Michiganians with their year-end tax planning questions," said Hummel. "Call us toll-free at 1-800-829-1040, or visit one of our 18 tax assistance offices statewide, during normal business hours."

Tea Party

On December 16, 1773, American colonialists protested the exorbitant British excise taxes on goods exported to the colonies by dumping the contents of nearly 350 chests of tea into Boston Harbor. Dubbed the "Boston Tea Party," the famous incident began a long tradition of American opposition to unfair taxation.

Want Ads Get Results

DEBORAH ENGLEBERT
Realtor
Res. Phone: 313/475-8303

the Charles Reinhardt Co. Realtors

2452 East Stadium Blvd.
Ann Arbor, Michigan 48104
Phone 313/971-6070

Holiday Parties

It's time to deck the halls and make merry! You can have as much - or even more - fun than your guests at your next holiday party if you take the time to plan ahead. Here are some tips from Winterfest to help make you a happy, not harried, holiday hostess:

- Get organized. Make lists, beginning with the guest list. A time schedule is essential. Call florists and rental services - for tables, chairs, linens - at least a month in advance as the holidays are their busiest season.
- Select a menu that allows most of the items to be prepared ahead and frozen or refrigerated. This is not the time to make complicated recipes or try new ones.
- Small touches are critical to help set the mood. Consider adding candlelight, fragrant greenery, a touch of mistletoe and lots of flowers to compliment beautifully presented foods and carefully orchestrated table settings. Use soft background music to bolster spirit and gaiety.
- On the day of the party, do not spend all your time in the kitchen - your energy will be sapped before your guests even arrive. Take time to relax and check last minute details.

of the items to be prepared ahead and frozen or refrigerated. This is not the time to make complicated recipes or try new ones.

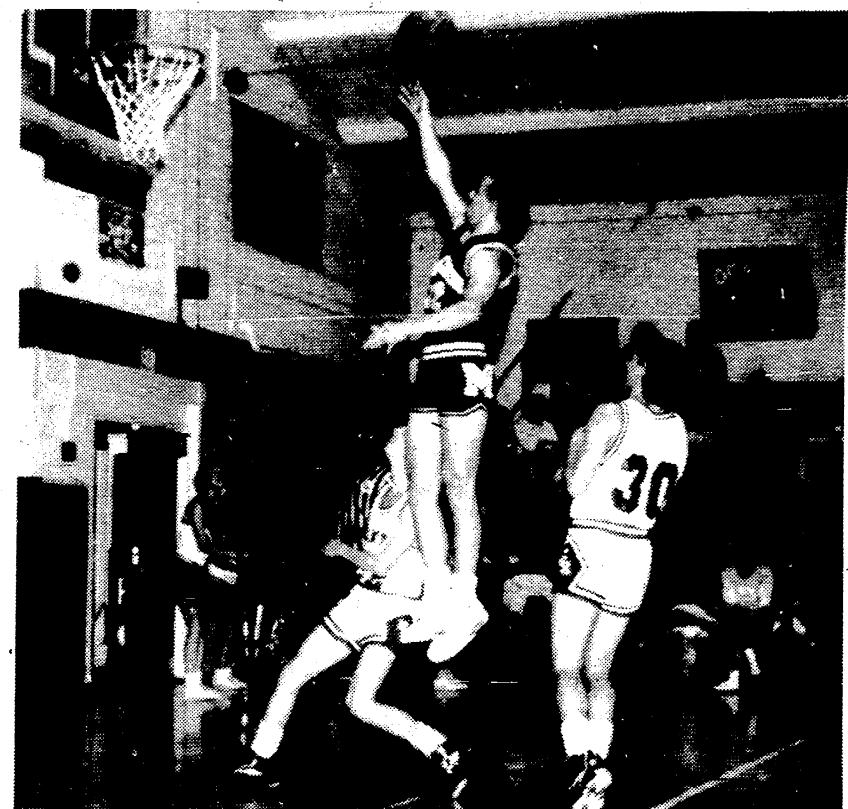
Hoopsters Victorious

by Jon

Our boys opened their Cascade season on Friday by whipping Hanover-Horton 80-66. Senior center Stefan Knul drove in a career high of 36 points.

The first quarter stayed close with the Dutchmen ahead by two, 18-16; but Jason Dominick's slam dunk midway through the second quarter ignited our squad who moved out to a 40-31 half-time advantage. The third period saw us dominate both offensively and defensively as we assumed a 20-point lead. The benches emptied and play continued to be ragged, but we did win in the end. Stefan was game high scorer with 36, Jason Dominick hit for 13, Jeff Gillow and Jesse Widmayer combined for 17, 9 and 8 respectively.

Be with us Friday as we host Napoleon for our final game of the year. Congratulations to our Little Dutch who downed the Comets Friday. This win improves our season record to 3 and 1.



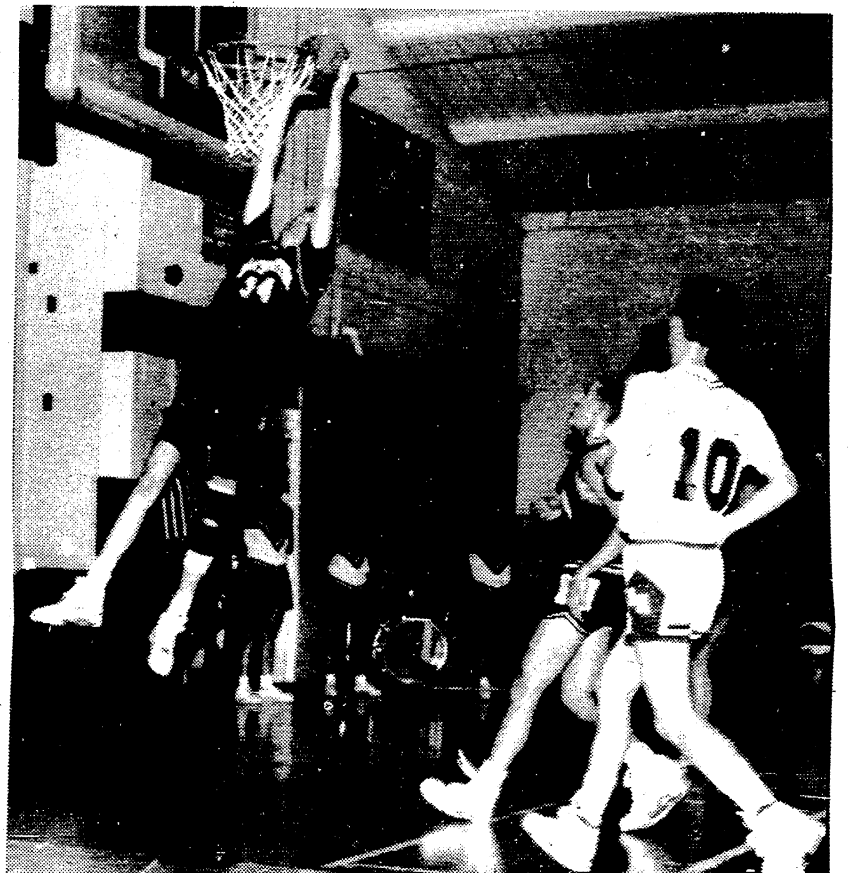
Jesse Widmayer soars to score

Photo by Jon

Girls Volleyball Update

by Jon

On Saturday, we began our spiking campaign by busing to the Adrian-Lenawee Christian tournament. Our Lady Dutch made it to the championship round but fell to Gabriel Richard, 9-15, 15-11 and 14-16.



Jason Doninick slams

Photo by Jon

FAHEY Realty

215 E. MAIN STREET
MANCHESTER, MICHIGAN 48158
OFFICE: 313-428-9298
RES: 313-428-7188

135 W. MICHIGAN AVENUE
CLINTON, MICHIGAN 49236
1-517-456-7491

MEMBER LENAWEE COUNTY BOARD OF REALTORS
MULTIPLE LISTING SERVICE

Pork Avenue Excavating

- Drain Fields
- Trenching
- Grade Work
- Driveways

Doug Welshans
3675 S. Fletcher Road
Chelsea, Michigan 48118
(313) 475-9656

STEEL

NEW & USED
STEEL AT
BARGAIN PRICES

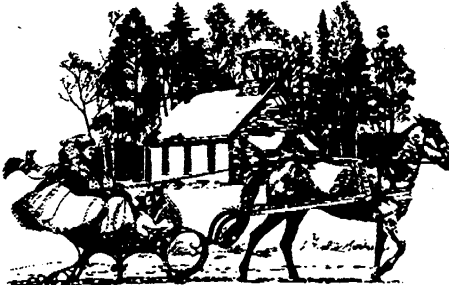
- Structural • Plate
- Re-Rod
- Pipe • Square Tubing

(Quantity Discounts)

Jackson Fibers Co.
(517) 784-9191

1417 S. Elm St.
1 block north of High St.
Jackson, Michigan

WARMEST HOLIDAY WISHES



We would like to extend our warmest holiday wishes and sincere thanks to our valued customers and their families during this special time of the year. We hope everyone has a Merry Christmas and a happy and healthy New Year.

Pennington LP GAS

Count on us to keep the heat on!

9155 W. Weston Rd. / P.O. Box 37
Morenci, MI 49256
(517) 458-7107
Toll Free 1-800-365-5599

13400 M-52 / P.O. Box 490
Stockbridge, MI 49285
(517) 851-7577
Toll Free 1-800-274-5599

DB's/Mr. Rib's
Catering Available
Pizza • Subs • BBQ
901 S. Main, Chelsea
475-8700
* Delivery Available

Ask about our "Special of the Day"

APPETIZERS		SUBS	
Pa'se Crazy Bread Sticks With garlic seasoning and parmesan cheese, made to order.	\$ 2.00	Fuzzy's Delight Bratwurst on a homemade bun, with cheese, onions, kraut, and mustard.	\$ 3.50
Garlic Bread With cheese	\$ 1.00	Roast Beef Sliced roast beef, cheese, tomato, mayo, and lettuce on a homemade bun.	\$ 4.50
	\$ 1.50	Italian Hero Ham, hard salami, cheese, tomato, pickles, onions, lettuce, and mayo or Italian dressing on a homemade bun.	\$ 3.50
SALADS		Vegetarian Any combination of veggies with cheese, lettuce, tomato, pickles, and mayo or Italian dressing on a homemade bun.	\$ 3.50
Chef Salad Lettuce, tomato, ham, cheese, mushrooms, green olives, black olives, green peppers, and onions.	\$ 3.50	Ham and Cheese Sliced ham, cheese, tomato, mayo, lettuce, onions, and pickles on a homemade bun.	\$ 3.50
Tossed Salad	\$ 2.00	Turkey Sub Sliced turkey breast, cheese, tomato, mayo, and lettuce on a homemade bun.	\$ 3.50
Homemade Coleslaw	\$.90	Moe's Meatball Special Appropriately, meatballs, cheese, and red Italian sauce on a homemade bun.	\$ 3.50
		French Dip Sliced roast beef on a homemade bun, served au jus.	\$ 4.50
BBQ SPECIALTIES		Pizza Sub Your choice of any X-items on a homemade bun, with cheese, pizza sauce.	\$ 3.50
Wickory Smoked Ribs: Full Slab Half Slab Snack 1/2 BBQ Chicken	dinner \$16.25 a la carte \$15.00 \$ 9.75 \$ 6.50 \$ 6.50	X-Items on Subs	\$.25
Jesse James Delight Mr. Rib's barbecue beef or pork on a toasted homemade bun with pickles and onions.	\$ 4.50		
Soul on a Roll Mr. Rib's award winning barbecued beef and pork on a roll with cheese and homemade coleslaw.	\$ 4.50		
Baked Beans	\$.90		
PIZZA			
Gourmet BBQ Pizza Jesse's Pride™ Barbecue Sauce, 3 kinds of cheese, with your choice of BBQ chicken, beef, or pork on a traditional homemade pizza crust.	\$10.00		
X-Items	\$.95		
Large Cheese Pizza X-Items	\$ 7.00 \$.95		
Medium Cheese Pizza X-Items	\$ 6.00 \$.75		
X-Items: pepperoni, ham, sausage, ground beef, onions, mushrooms, green or black olives, tomatoes, hot or mild peppers, green peppers, pineapple, double crust, double sauce, extra cheese			

* Delivery Available: Minimum Order \$7.00, Limited Delivery Area.

KRAUSS PHARMACY AND LAUREL HOME HEALTH CARE

CARRYING A FULL LINE OF HOME HEALTH CARE EQUIPMENT

HOSPITAL EQUIPMENT
• Beds • Oxygen • Walkers • Bedside commodes
• Ostomy • Canes • Nebulizers

ORTHOTICS
• Wrist splints • Knee braces • Traction
• TENS units • Cervical collars
• Back cushions • Cervical pillows

DIAGNOSTICS
• Blood glucose meters • Stethoscopes
• Digital blood pressure monitors
• Manual blood pressure kits

FUND RAISING

Manchester Sportsman Club
8501 Grossman Road
Friday 6:45 p.m.

Manchester American Legion
203 South Adrian Street
Saturday 7:00 p.m.

313-429-4885 COUPON 517-423-2148

Saline in the Saline Shopping Center

1ST OPTOMETRY eye care centers

\$99 Daily Wear Soft Contact Lenses

Dr. Thomas Cunningham

DOES NOT APPLY TO OTHER DISCOUNT OFFERS OR PRIOR ORDERS

Tecumseh 128 W. Chicago Blvd.
\$10 OFF (with coupon)
Prescription Eyeglasses

TOTAL FITNESS OUTLET

120 W. Middle St.
Chelsea, MI 48118
475-1900

GREAT RUNNING SHOES
at unbelievably low prices!!!

asics Brooks Etonic
HITEC new balance Saucony

Gift Certificates available!

COUPON
\$.50 OFF ANY SUB
1.00 ANY PIZZA
LIMIT OF 2 EACH
EXPIRES 12-31-90

let your words do the talking in the CLASSIFIEDS

Classified advertising will be \$2.75 minimum charge for 20 words or less and 8¢ for each additional word. All classified ads are payable in advance, if not, a billing charge of \$1.00 will apply. Deadline for classified advertising will be 10 A.M. Tuesday for that week's publication. Cards of Thanks will be \$5.00 minimum charge for 50 words or less with a charge of 8¢ for each additional word.

MICHIGAN PEAT SALES: Black dirt for sale, \$12 a yard delivered. Fast delivery. 428-9664 tfn

C & B PAINTING: Interior-Exterior. Free estimates. Contact Charles E. Benedict, Phone 428-7136 or 428-7416 tfn

LOST OR FOUND A PET? Call Humane Society 662-5585 tfn

LITTLE WACK EXCAVATING: Licensed and insured. Basements, drainfields, digging, bulldozing, trenching, black dirt, sand, gravel. Snow removal and salting. Paul Wackenhut. 313-428-8025 tfn

MERRIMAN INSULATION: Free estimates. Blown-in cellulose professionally installed. George Merriman. Phone 517-592-5527 tfn

PIANO TUNING AND REPAIR: Qualified technician. Ron Harris 475-7134 tfn

MANCHESTER ANTIQUE MALL: 35 Dealers. Open 7 days 10-5. 116 E. Main. 428-9957 tfn

FIELDER PAINTING: Interior and exterior. Free estimates. Senior citizen discount. Phone 428-8506. tfn

AVAILABLE FOR WEDDING receptions, parties, meetings: Hall rental \$175. \$40 cleaning. Catering available. For further information, call 428-8393 or 428-7637 tfn

WALKOWE'S HOME IMPROVEMENT COMPANY: Phone 313-428-8468. Seamless aluminum gutters for low prices, and dependable service. tfn

BLACK DIRT FOR SALE: By the pickup load or delivered. 428-9265 after 6 p.m. tfn

TWO BEDROOM APARTMENT in Village on river. Washer/dryer, stove & refrigerator. \$425/month. Call 428-9150, leave message tfn

ALBER EXCAVATING: Basements, drainfields, driveways, finished grade, water and sewer. Call 313-428-8636 tfn

INSULATION AND ROOFING: Custom insulation. No plugs in your siding. No chemicals added. Quality workmanship guaranteed. Senior discount. Licensed and insured. 14 years experience. Full House Insulators. Call Mike for free estimate. 313-428-9692 eow

PARENTS OF CHILDREN 1 - 8 years: Little Dutch Child Care Center offers a variety of programs for Toddlers, Preschoolers and Latchkey children in our newly expanded center. Contact the Program Director at 428-8988 for enrollment information. tfn

HELP WANTED: All positions, full time, part time. Apply in person. Chelsea Big Boy tfn

2 BEDROOM APARTMENT IN Village of Manchester. References. 428-9380 tfn

McCULLOCH CHAIN SAWS, small engine repair, welding. Chain saw chains sharpened. 16"-\$2.50. Earl Alber, 639 W. Main, Manchester, 313-428-8707 12/20

ACCEPTING APPLICATIONS for furnished efficiency apartment. Single adult only. 428-9216. tfn

FARM ANIMAL CARE Service: Evenings, weekends, holidays. Experienced. References. Dependable. Specializing in horses. 428-8005 tfn

SEASONED HARDWOODS: 1 face cord \$55, 4 at \$50 each, 12 at \$45 each. Delivered. 313-439-8978 1/3/91/p

CHRISTMAS TREES FOR SALE starting November 24th. 639 West Main. tfn

YOGA CLASS FORMING IN 1991: Interested? Call (517) 592-2950 1/17/p

FIREWOOD: SEASONED, split oak. U-Pick-Up. \$30 face cord. 428-9508 1/3/p

DAY CARE HAS OPENINGS: Call Kim at 428-9424 12/20

NEED A BABYSITTER FOR Christmas shopping? 18 months to 6 years, 6:30am-5pm, Mon. thru Fri. Call 428-8971. Excellent references. 12/20

ANN ARBOR WINDOW CO. Thermal Replacement Windows. Roofing, Siding, Complete Home Improvements. 428-9820 tfn

DO YOU NEED YOUR HOUSE CLEANED? I have openings Mon. through Fri. Reliable, dependable and very thorough. References also. By the job or the hour. Call Linda 428-9534, or 428-7496 and leave message. 12/20

BASEBALL CARDS FOR SALE

- | | |
|--|-----------|
| 1987 Fleer Complete Set of 660 | \$115 |
| 1987 Topps Complete Set of 792 | \$42 |
| 1988 Topps Complete Set of 792 | \$25 |
| 1988 Topps Big 1st or 2nd Series A Series | \$5 |
| 1988 Donruss Complete Set of 660 | \$25 |
| 1988 Fleer Complete Set of 660 | \$50 |
| 1988 Score Complete Set of 660 | \$26 |
| 1989 Topps Complete Set of 792 | \$25 |
| 1989 Donruss Complete Set of 660 | \$26 |
| 1989 Fleer Complete Set of 660 | \$30 |
| 1990 Topps Complete Set of 792 | \$25 |
| 1990 Donruss Complete Set of 714 | \$25 |
| 1990 Fleer Complete Set of 660 | \$25 |
| 1988 Fleer Baseball Wax Box 36 packs | \$80 |
| 1990 Fleer Baseball Wax Box 36 packs | \$18 |
| 1990 Fleer Football Wax Box 36 packs | \$30 |
| 1990 Fleer Basketball Wax Box 36 packs | \$30 |
| 1990 Pro Set Football Series 1 or 2 Wax Box 36 packs | each \$18 |
| 1990 Score Football Series 1 or 2 Wax Box | each \$18 |
| 1990 Hoops I Wax Box | \$18 |

Other sets, singles, boxes, and star cards available. Please call 428-9384.

FOR SALE: 1984 MERCURY COUGAR, charcoal grey, 5.0 liter V-8. Loaded with convenience options. Car has been well-maintained. Call 428-9280. p

RESTORED ANTIQUE ONE-HORSE SLEIGH. Beautiful and in excellent condition. Red with brass trim. \$900 428-8005

TIRE FOR SALE: 70016, fits 3/4 ton pickup truck Ford or Chevy. \$150. 428-7155 12/27/p

RICK, CONGRATULATIONS on the Harley. I can't wait to hit the street. Love you, Kay p

REALTY WORLD Allied currently has 3 positions available for licensed agents who are self-starters, looking for direction and management support. If you have the desire to make a lot of money selling real estate but lack the guidance needed, call Mary at 592-6027. p

FOR SALE: BUCKSKIN HORSE, 6 year old gelding, kids' horse. One registered Morgan mare, 3-year old, not broken. 428-7389. 12/27/p

BUY IT. SELL IT. FIND IT.
CLASSIFIED.

CUSTOM CABINETS MADE IN MANCHESTER

Competitive Prices
Installation Available
Design Service

—OR—

Let Us Reface Your Old Cabinets and Save \$\$



Dutch Country Kitchens

18352 W. Austin Road Phone 313-428-7292 Manchester

In Loving Memory
Thank you to all the special workers at the Black Sheep Tavern. It's nice to have friends like you. Also, thanks to the regulars and good tipping patrons. Even though I'm not working there now, I'll be around.

December brings sad memories. Of a loved one gone to rest. He will never be forgotten. By the ones who loved him best. His life has a lovely memory. His absence, a silent grief. He sleeps in God's wonderful garden, And sunshines perfect peace.

Sadly missed by mother and sisters

Love, Kay

Public Notice
STATE OF MICHIGAN PROBATE COURT COUNTY OF WASHTENAW PUBLICATION NOTICE Deceased Estate FILE NO. 90-95209-SE

Kirk Excavating
Sand—Gravel—Fill Dirt Basements—Driveways
428-7938
Dave Kirk
14180 Scheweis Road
Manchester

Estate of WILLIAM J. BEACH, DECEASED.
TO ALL INTERESTED PERSONS:
Your interest in the estate may be barred or affected by this hearing. TAKE NOTICE: On January 3, 1991 at 9:00 a.m., in the probate courtroom, Ann Arbor, Michigan, before Hon. John N. Kirkendall, Judge of Probate, a hearing will be held on the petition of Dorothy F. Beach requesting that she be appointed personal representative of the Estate of William J. Beach who lived at 10639 Dexter-Chelsea Road, Dexter, Michigan and who died November 27, 1990; and requesting also that the will of the deceased dated September 19, 1983 be admitted to probate, and that the heirs-at-law of the deceased be determined. Creditors of the deceased are notified that all claims against the estate will be forever barred unless presented to the (proposed) personal representative or to both the probate court and the (proposed) personal representative within 4 months of the date of publication of this notice. Notice is further given that the estate will then be assigned to entitled persons appearing of record.

KEUSCH AND FLINTOFT, P.C. Attorneys for the Estate BY: John P. Keusch (P-15927) 119 S. Main Street, P.O. Box 187 Chelsea, Michigan 48118 313/475-8671 Dorothy F. Beach Personal Representative 10410 Dexter-Chelsea Road Dexter, Michigan 48130

Prevent Head Injuries This Holiday Season

The holiday season is full of happiness and good cheer. With celebrations, family gatherings, office parties, it represents the most social time of the year. However, more often than not, alcohol is associated with these get-togethers and that provides the potential for drinking and driving. Along with all this fun comes a very serious consequence - accidents as a result of drinking and driving are more prevalent during the holiday months.


According to the National Head Injury Foundation, automobile accidents, including those associated with alcohol use, account for approximately 250,000 head injuries each year - 50% of those reported. Every year 70,000 to 90,000 persons lapse into coma and more than 140,000 Americans die as a result of head injuries. A head injury is any level of damage to the brain caused by impact to the skull. For example, hitting your head on the dashboard or windshield of a car during an accident could result in a head injury. Driving under the influence of alcohol increases the chance of an accident occurring from falling asleep at the wheel, losing control of the car in slippery road conditions, or not having a clear perception of oncoming cars or roadside obstacles like telephone poles, guard rails, and pedestrians.

Statistics show that head injury kills more Americans under the age of 34 than all other causes combined. Prevention is the key to reducing these escalating numbers. The New Medico Head Injury System reminds you of the key to prevention - don't drink and drive.

Before heading out for your holiday celebration, follow one of these prevention tips:

- Appoint a "designated driver" who will abstain from drinking

Family Breakfast



Sunday, December 30, 1990
8:30 a.m. - 12:30 p.m.
K of C Hall - Manchester
Adults \$4.50 Children 5-12 \$2.00
4 & Under Free
All proceeds go toward funding St. Mary's Church handicap entrance
COME JOIN US!

Happy Holidays
Our warm wishes are with you. Merry Christmas and thanks.

PYRAMID OFFICE SUPPLY • And EMPORIUM • 106 E. Main Street • Manchester, MI • (313) 428-8963 • Fax Service • Photo copies • Stop in for our DECEMBER SALE • School Supplies • Arts and Crafts Items • OPEN MONDAY THROUGH FRIDAY from 9:00 a.m. until 5:30 p.m., SATURDAYS from 9:00 a.m. until 3:00 p.m. • Computer Supplies and Service • Everything for your Office • PYRAMID OFFICE SUPPLY • And EMPORIUM • 106 E. Main Street • Manchester, MI • (313) 428-8963 • Stop in for our DECEMBER SALE & SPECIALS

Stop in for our December Sale!

PYRAMID OFFICE SUPPLY • And EMPORIUM • 106 E. Main Street • Manchester, MI • (313) 428-8963 • Cards, gifts, party supplies • School Supplies • Arts and Crafts Items • Stop in for our DECEMBER SALE • Toys, Toys, TOYS! • Dictionaries and Thesauri • Household Supplies • Sewing Needs • 106 E. Main Street • Manchester, MI • (313) 428-8963 • Computer Supplies • Everything for your Office • Artist's Supplies • Typewriter and Calculator Repair • Fax Service • Photo copies • Open MONDAY through FRIDAY from 9:00 a.m. until 5:30 p.m., and on SATURDAY from 9:00 a.m. until 3:00 p.m.

Holiday Entertaining with A "Pinch" of Variety

A warm home, good food, good friends and family are the ingredients for a memorable holiday season. But in today's busy society the customary sit-down dinner is sometimes easier said than done. Why not gather family and friends for an intimate cocktail and hors d'oeuvres party? Hors d'oeuvres or finger-foods can be served as a satisfying substitute to a meal in addition to being a wonderful complement to a glass of something special to sip. Fashionable Scotch Whisky, with only 104 calories per 1 1/2 ounce serving, is the perfect accompaniment for taste-tempting hors d'oeuvres.

Pinch Scotch Whisky, easily recognized by its "dimple" bottle, is now aged 15 years to offer discriminating Scotch drinkers a smoother, richer, more mellow flavor. Serve Pinch in elegant snifter glasses, with a variety of festive finger-foods to enhance the traditional spirit of the holidays. The following zesty hors d'oeuvres recipes have been created exclusively by Pinch with ingredients that best complement its unique flavor.

- SMOKED TROUT WITH PEAR AND POMEGRANATE** (makes 3 dozen)
- | | |
|---|--------------------------|
| 10-12 slices thin whole grain or dark bread | 4 oz. cream cheese |
| 1/4 lb. smoked trout, skinned and boned | 1 tbsp. grated onion |
| 4 tsp. lemon juice | 1 tsp. white pepper |
| | 1 very firm pear, peeled |
| | 1 pomegranate, seeded |

Cut the bread into rounds with a 1 1/2" diameter biscuit cutter. Place trout and 2 tsp. of the lemon juice in a food processor or blender and process until smooth. Add cream cheese, onion and pepper, and process until smooth. Place in a pastry bag with a star tip and chill until ready to use. Cut pear into thin strips (julienne) and toss with the remaining lemon juice. Pipe a small amount of the trout onto each of the bread rounds, and garnish with several strips of pear and 4-5 pomegranate seeds.

- PECAN-CHEDDAR WAFERS** (makes 5 dozen)
- | | |
|-------------------------------------|--|
| 1/4 lb. mild cheddar cheese, grated | 1/4 cup, plus 2 tbsp. finely chopped pecans |
| 7 tbsp. butter | 5-6 pieces crystallized ginger, finely chopped |
| 1 tsp. salt | |
| 1/4 tsp. red pepper sauce | |
| 2 cups all-purpose flour | |

Cream cheese and butter together in a food processor or with a mixer. Add salt and red pepper sauce. Gradually add flour, process until well blended. Remove and stir in the 1/4 cup pecans. Flatten mixture into a round, wrap and chill until firm, about 1 hour. Preheat oven to 325 degrees. Combine the remaining pecans with the ginger, set aside. On a lightly floured surface, roll out dough to 1/4" thick. Cut out rounds with a 1 1/2" diameter biscuit cutter and place on ungreased cookie sheets. Repeat with remaining scraps. Press a few pieces of the pecan and ginger into the center of each wafer. Bake for 8-10 minutes, until just barely colored. Remove and cool on racks.

Village of Manchester Sewer Separation Project Contract 90-S-1

Sealed Proposals will be received by the Village Clerk at the office of the Village of Manchester, 120 South Clinton, Manchester, MI 48158, up to 2:00 p.m., prevailing local time on January 15, 1991, and then publicly opened and read aloud, for the construction of Contract 90-S-1.

The work consists of installation of approximately 3000 LF of sanitary sewer, 7200 LF of storm sewer and modifications of existing manholes and catchbasins as necessary to complete a separation of existing combined sewers.

The Drawings and Specifications under which the work is to be done are on file and may be examined at the office of the Village of Manchester, 120 South Clinton, Manchester, MI 48158; at the Construction Association of Michigan in Detroit; at Daily Construction Reports in Sterling Heights, Michigan; at the Builders Exchange and the F.W. Dodge Corporation at Dearborn, MI and Lansing, MI; and at the office of McNamee, Porter and Seeley, Engineers/Architects, 3131 South State Street, Ann Arbor, Michigan 48108.

Construction Contract Documents may be obtained after December 17, 1990, from the office of the Engineer/Architect by purchase for the sum of \$15.00 per set. Shipping is an additional \$6.00 per set. There will be no refunds or return of documents.

A certified check or bidder's bond for a sum not less than five percent (5%) of the amount of the Proposal will be required with each Proposal.

The right is reserved by the Owner to accept any Proposal, to reject any Proposal, and to waive irregularities in Proposals.

No bids may be withdrawn after the above date and time for receiving bids for a period of ninety (90) days.

VILLAGE OF MANCHESTER
Karen Tucker, Village Clerk

Christmas in the Country

It's the best place to be, especially with so many wonderful friends and customers like you!



Dear Manchester friends,

Everyone here at Midwest Ford wishes you and your family a joyous holiday season. We wish to thank you for your patronage during this past year. We have grown tremendously during this year and look forward to a very prosperous 1991.

Midwest Ford now has four fully certified technicians that have a tremendous amount of experience between them. We are offering excellent service for the maintenance of your car or truck and at a very reasonable cost!

We offer a full selection of new Ford cars and trucks. If you don't see what you want at our lot, let us know and we can have one for you literally within hours. Midwest stocks a nice selection of used vehicles and always a large selection of VALUE rated Ford repurchase units. We will work hard to earn your business - all we ask is to give us a chance to serve you!

Merry Christmas & Happy New Year!

God Bless You.
Greg Marvin
General Manager

THERE IS STILL TIME LEFT TO HAVE A MIDWEST FORD CAR OR TRUCK FOR THE HOLIDAYS

<p>1990 THUNDERBIRD LX</p> <p>1985 THUNDERBIRD</p> <p>\$3,995 V-8, Loaded, Low Miles, Hurry!</p>	<p>1990 F250 DIESEL</p> <p>1987 TORONADO</p> <p>\$9,995 Loaded, Loaded, 39,000 Miles, Luxury. This car should cost thousands more</p>	
<p>1990 CROWN VICTORIAS</p> <p>\$11,995 Only 2 left</p>	<p>SPECIAL FORD MOTOR COMPANY PURCHASE</p> <p>\$9,888 1990 TAURUS Good Selection, Loaded, Low Miles</p>	<p>1990 TEMPOS</p> <p>\$7,995 5 to Choose From</p>
<p>\$12,995 2 to choose from</p>	<p>1990 AEROSTARS</p> <p>\$10,995 2 left</p>	<p>1990 THUNDERBIRDS</p>

TOP \$ FOR YOUR TRADE

<p>1976 CADILLAC COUPE DEVILLE Brand New Condition</p> <p>Was \$2,995 NOW \$1,495</p>	<p>1986 FORD TAURUS Auto, Air, Sharp Car</p> <p>Was \$5,995 NOW \$4,495</p>
<p>1986 CHRYSLER NEW YORKER Loaded With Equipment</p> <p>Was \$6,495 NOW \$4,495</p>	<p>1986 PONTIAC SUNBIRD SHARP! Every Available Option</p> <p>Was \$4,995 NOW \$3,995</p>
<p>1989 ESCORT GT Wow! What a sports car</p> <p>Was \$7,995 NOW \$6,995</p>	<p>1988 FORD RANGER XLT, 5 Speed</p> <p>Was \$5,995 NOW \$3,995</p>
<p>1989 FORD TEMPO GL Nice, Nice Car</p> <p>Was \$6,495 NOW \$4,995</p>	<p>1990 ALL-WHEEL-DRIVE TEMPO Only 9,000 Miles</p> <p>Was \$9,995 NOW \$8,495</p>

MIDWEST
510 W. MAIN ST., MANCHESTER, MI
MON. & THURS. 9-8; TUES., WED. & FRI. 9-6; SAT. 9-1
(313) 428-8343 or 1-800-388-0046

