

DEC 2 8 1990

THE MANCHESTER ENTERPRISE

30¢ COPY

124th YEAR VOLUME NUMBER SEVEN

USPS 327-460

THURSDAY, NOVEMBER 29, 1990

Larizza Industries To Close Manchester Plastics Plant



Mr. Edward Wells, Chief Operating Officer of Larizza Industries, Inc. (the holding company of Manchester Plastics, Inc.) announced the closing of its Manchester facility. Citing the overall automotive downturn, the relocation of two large customer

contracts and the need to cut costs as the reasons for the closure.

Manchester Plastics produces plastic injection molded interior trim components for the automotive industry.

The entire work force of 115

people will be affected as the phasing out of the plant over the next three months continues. Tentative shut down date is March 1, 1991.

Larizza will continue to operate two other Michigan facilities as well as their three Canadian locations.

Equipment Installed At Carr Park

The Manchester Parks Commission joined forces with the Manchester Men's Club to complete the construction of the new timber form playground equip-

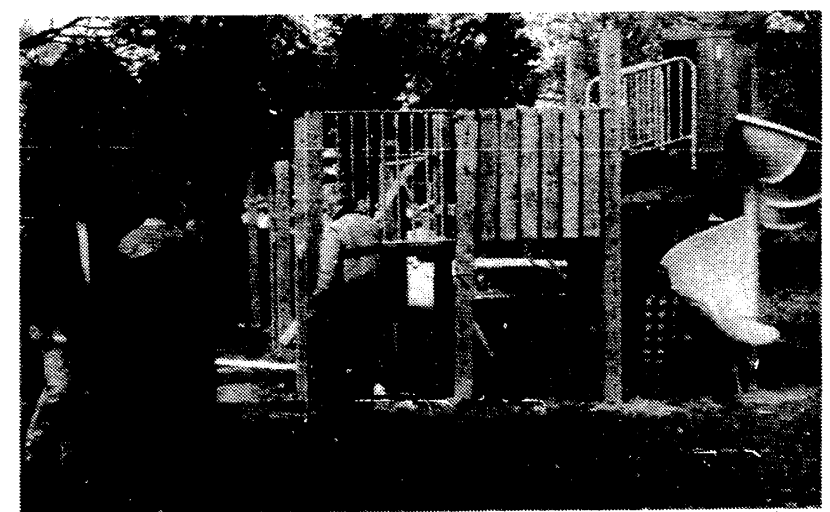
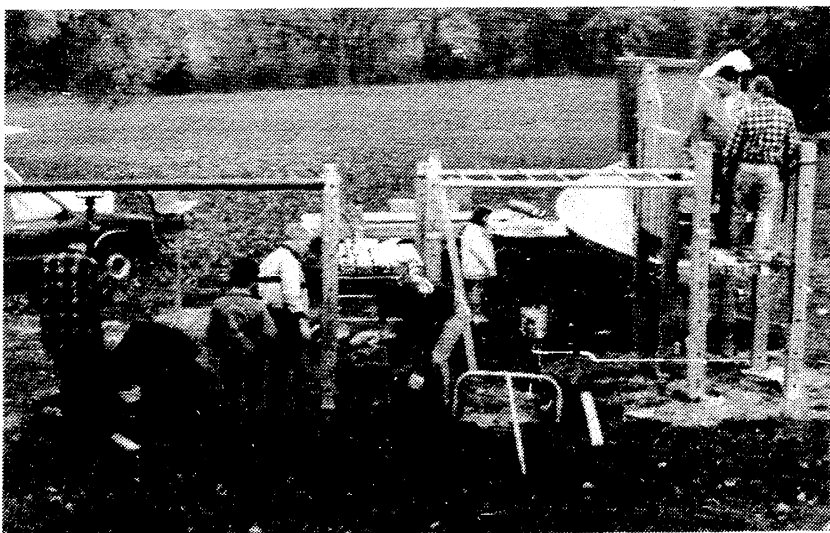
ment at Carr Park. The purchase of the spiral slide, tire swing, barrel roll, and various climbing structures was made possible by the Village of Manchester. The

donation by many members of the Men's Club of their time, skills and knowledge in construction resulted in a considerable savings of funds that can be used in the parks at another time.

The Parks Commission has placed the map of Char-Bro Park in the three Manchester banks. They would like some input from the villagers for the future use of the parks. If you have any suggestions, please indicate it on the map or contact one of the park commissioners: Ray Steele, Jeff Wallace, Patty Swaney, Jack Gould, Pat Fielder, Lynn Niehaus, or Diane DuRussel.

The response to the Parks request for the donation of a tree that could be used to light for Christmas in Wurster Park resulted in many generous offers. The two spruce trees that Helen Craig had on her property next to the River Raisin were exactly what were needed to be transplanted next to the sign for Wurster Park. They will be sparkling soon for the holidays. All of the trees that were offered may be used in Char-Bro Park next spring.

Service organizations like the Men's Club will continue to help with plans to improve our village. The generous support of the community and of the community organizations is making many projects of the Parks Commission a reality.



Village Council Report

Regular Meeting
November 19, 1990

- Approved a rezoning at 107 Union Street, C-2 Commercial rezoned to R-1B Single-Family Urban Residential District

- Approved a bid from Sybil Kolon for services identifying woodland areas and significant mature trees within the Village

- Approved a proposal from Geraghty & Miller for preparation of two reports required by the Michigan Department of Natural Resources on a spill or leak from an underground gasoline storage tank at the Village DPW yard.

Heard the following reports:

- Clear Cable
1) Electronic sweep of Manchester system has been made
2) Receiving module on tower has been replaced

3) There has been no increase in calls for service or reporting bad reception. However, in some instances where reports of bad reception have been made, Clear Cable has found bad connections at the utility pole or at the house. Subscribers should not hesitate to call in to have bad reception investigated by Clear Cable repair personnel.

4) Toledo Channel 13 will be added to Manchester service. Toledo Channel 30 will be deleted from Manchester service.

5) Subscribers for "Basic" service will be charged \$5 per month for additional TV hookups within the home. (They have been paying 40% of the monthly bill for additional TV hookups.)

6) There will be a rate increase in January.

- The Village's Fire Insurance Grading Classification has been improved to Class 6. The rating agency says that this is expected to average a 9.3% decrease in insurance rates for wood frame homes.

Science Up To Date

Manchester Enterprise
October 24, 1895

Harmless Cosmetic

It has been discovered that ladies who wish to heighten their complexions need no longer use paints and unguents that are injurious to the skin. "Blackberry or strawberry juice rubbed slightly on the cheeks and then washed off with milk gives a beautiful tint."

"The garden beet is also an excellent cosmetic. The beet is cut and the juice is applied gently with a camel's hair brush." Country ladies will thus have an advantage over those of town. There will be no necessity to apply to any Mme. Rachel, but they will do their painting on the premises. Such aids to beauty can hardly be called artificial. It is possible, however, they may become dangerous in the bee season. The enamored swain will think it only natural that the persistent insect should be attracted by such flower-like beauty, but, the lady will know better.

Pilot Metal Products Nears Completion



Pilot Metal Products is nearing completion of the most recent phase of renovations to their Manchester plant, formerly occupied by Double A Products.

A new entrance has been created with new brickwork to blend with the rest of the building. Windows have been replaced on the north and east

walls, and a new awning wraps around the northeast corner.

Interior renovations have included new floors, walls and ceilings throughout most of the office area, and also some roof repairs.

The company now employs 108 people and is operating on two shifts.

Senior Citizens News

A couple of weeks ago, seniors toured the new four-year-old U of M Hospital. Parking was not a problem, except for our bus which didn't fit under the seven-foot entrances to the structures. So our valiant bus driver, Willis Hassett, who took us to different parks to await a shuttle bus, made another call for directions. Finally he dropped us at the entrance and he and his wife stayed with the bus while we toured.

Most fascinating to both groups were the shiny rectangular robots which pick up and deliver carts of all descriptions: food, trash, etc. These are programmed and they even know when to go to "recovery" to sit with hoses plugged in. While touring in that area, we often looked behind us hoping we weren't in their track. Our tour guide was most gracious and patient with our many questions and it was a trip we would all recommend.

Thursday, November 29: Activities begin with the exercise class at 11:00, ham patties at 12:00 noon, and bingo at 12:30. (Our tour guide told us she parks her car a mile away and walks to work each day - now that is really exercise, huh?)

End of November, wheel Tuesday, December 4: Since Jan hasn't given us a title for our lunch feature, we will just call it "No-Swish Fish". Call in reservations for our Tuesday or Thursday noon lunches at Emanuel's dining room to 428-8459 or

428-7630 before 10:30 a.m. on meal days.
Wednesday, December 5: Seniors who have tickets leave the Center at 10:00 a.m. for the Turkeyville Dinner Theater.
Thursday, December 6: Today is the last day for the exercise class in this current term. It is the day for all senior December-born folks to come and enjoy your birthday festivities. Your dinners are half-price, or \$1.25. Call in your reservation and come enjoy the birthday party with meat loaf, special candle on the cake, and get your picture snapped for posterity! Bingo will be played at the Center afterwards.

School Hot Lunch Menu

Monday, December 3: Pizza, Tossed Salad with Dressing, Fruit, Pudding, Milk

Tuesday, December 4: Italian Spaghetti, Broccoli Spears, Warm French Bread with Butter, Pineapple Tidbits, Milk

Wednesday, December 5: Vegetable Soup with Crackers, Deli-Turkey Sandwich, Vegetable Sticks, Granola Bar, Molded Fruit Salad, Milk

Thursday, December 6: Crispy Fish Fillet, Oven-Brown Potatoes, Bread & Butter, Fruit, Ice Cream, Milk

Friday, December 7: Pizza, Tossed Salad with Dressing, Fruit, Pudding or Cookie, Milk

Letter To The Editor

To whom it may concern:

I am sure that most people in the Manchester area make a very sincere effort to maintain the charm and beauty of the countryside. Therefore, it bothers me greatly when I see litter on the side of the road. What bothers me even more is when I see that someone has blatantly dumped trash along the side of the road. The rubbish that I am seeing on the side of the road includes things such as a truck load of shingles, carpeting (enough to cover a complete house floor), and laundry baskets. To me, it is a terrible shame that people believe that refuse dumped "in the country" that it will just "go away". The debris is just left for the owner of the property to clean up.

Helen Waram

Dial A Garden

The following is a monthly schedule of Dial-A-Garden, the system of pre-recorded daily gardening tips sponsored by the Washtenaw County Cooperative Extension Service. The system is in operation 24 hours a day, 7 days a week. Interested persons are invited to call 971-1129 at their convenience to listen to timely, up-to-date gardening information.

Thursday, November 29: Constructing a Container Garden
Friday, November 30: Plants for a Container Garden

Monday, December 3: Maintaining a Container Garden
Tuesday, December 4: Kitchen Garden

Wednesday, December 5: Buying a New Houseplant

THE MANCHESTER ENTERPRISE
150 East Main Street Phone 313-428-8173 Manchester, MI 48158
USPS No. 327-460

The Manchester Enterprise was established in 1867 and is published each Thursday at 150 East Main St., Manchester, Michigan, with second class postage paid at Manchester, Michigan 48158.
Edward E. Steele, Publisher Lenore A. Steele, Editor
POSTMASTER: Send Form 3972 To: Manchester Enterprise, 150 East Main St., Manchester, Michigan 48158.
DEADLINES: All Display Advertising and Pictures (Black & White ONLY) Are Due By 5 p.m. Every Monday For Same Weeks Publication. All Classified Advertising and News Articles Are Due By 10 a.m. Every Tuesday For Same Week Publication.

Shakespeare Reading Club

The club met at the home of Mae Hardenberg on November 13. Mae's topic was "Why am I here?" Her father was born in England and came to America with his parents when he was 10 years old. He never forgot how much he loved his grandfather's farm where he spent many happy hours. He decided that someday he would buy a farm in America just like his grandfather's. After he was married and had his own family, he bought the farm where Mae lives now. Mae and her family later moved in the house and remodeled the house in a beautiful way.

We are glad that Lois Jewell is our newest member of our club. Welcome Lois!

Our December meeting will be held on Saturday, December 1. We will meet at Emanuel Church at 11:30 a.m. to carpool and go to lunch. Then enjoy Christmas at the Waterloo Farm open house. Please notice the date of the meeting which is different than in our program book.

Please call Jeanette Kirk and let her know if you are going unless she already knows.

Kiwanis Bird Seed Sale

Warm weather will end soon and snow will cover the ground. Then the birds will be looking for that bird seed that is available through the Manchester Kiwanis club.

Mixed bird seed and thistle seed are available as well as the bird feeders.
Haven't quite figured out what to get Grandpa and Grandma for Christmas? How about bird seed? Birds are fun to watch when those cold days keep many people in the house.

Bird seed orders can be placed at the Comerica Bank, through Kiwanis Club members, the Community Resource Center 428-7722, or Dianne Schwab 428-8976.

Proceeds from the bird seed sale will buy food for those people serviced by the Manchester Family Service.

20th Century Club

After going out to dinner on November 15, eighteen members and guests of the 20th Century Club attended a performance of "LaRonde" by Arthur Schnitzler at the Quirk Theater of Eastern Michigan University.

Editorial

The closing of yet another factory in our community is a crushing blow to our economy and tax base. It leaves many questions unanswered. Can we accept regression instead of progression? How will we make up the shortage? How will it affect the operating costs of the village? Where will the people employed at Manchester Plastics find work?

We need cooperation between industry and the community. We cannot afford to lose any more employers.

How this will affect our whole community in the long range remains to be seen. We must keep this in mind when we begin to complain about noise, traffic and inconvenience caused by existing facilities. Industry and residential can co-exist.

The Elf Factory



Kindergarteners rehearse for their holiday program "The Elf Factory". The musical play, under the direction of Mrs. Kay Miller, will be presented on December 5th at 7 pm in the Middle School Gym.

Letter To The Editor

To The Editor:

"A devastating blow" is the way one of my co-workers described the Manchester Plastics' closing when the newspaper reporter asked him for a comment. I might have said something similar, myself, if the reporter had asked me - but I was meeting with the Community Resource Center Director that morning, working on - among other things - coordination of local services available to Manchester Plastics' employees and their families.

The most undeserved blow, of course, is to the employees. Especially undeserved, because these are people who have produced automotive parts and assemblies that met or exceeded the stringent quality standards of General Motors, and earned the coveted Q1 award from Ford Motor Company.

But it is a sad fact that there is nothing that any group of employees, or any local government, can do, when management instability and financial uncertainty become for too long a way of life in the "front office".

I have asked the company to schedule a local group presentation to employees, in which local services can be explained. These include job search through the Manchester MESC office, job counseling, interview training, resume preparation, job training and retraining through WALTEC (the Washtenaw-Ann Arbor-Livingston Training and Education Center) and the Private Industry Council, and individual

and family counseling through the Manchester office of the Interfaith Counseling Center.
Information on all of these services is available from the Community Resource Center, 428-7722, located in the basement of the Old Methodist Church building at the corner of West Main and North Washington.

Village taxpayers may be curious about the impact on the property tax base, our source of funds for general Village services, streets, parks, public safety and voter-approved bonded debt service. Manchester Plastics' taxes are roughly equivalent to 2 mills. About half of this is on personal property - the machines, equipment, furniture, etc. which is removable from the plant. The rest is on real property - the land and building.

When the old Double A building was left empty, it was finally given productive new life after Village government took the initiative to acquire the facility and find a buyer who would renovate the building and create new jobs. Just over a year has gone by, and Pilot Metal Products has already done extensive inside and outside renovations and currently employs more than 100 people.

So, we must not forget the old saying: "Every ending is also a new beginning". Industry has been an integral part of the Village of Manchester since its very early days, and I am sure that in the present circumstances Manchester people will pull together - as they have always done, long before I was fortunate enough to start living here, and long before I was even born.

Mary Kallewaard



LIBRARIES ARE FOR LOVERS

...especially for lovers of good books and good conversation.

Members of the community are invited to consider love at its most cruel and its most sublime, to discover the lessons of life that literature may teach us, and to enjoy some good books that are sure to provoke lively conversation.

Two friends lose and love the same woman in Graham Green's poignant novel "The End of the Affair". Come talk about it at the Blacksmith Shop on Thursday, December 6 at 7:30 p.m.

This second program in a five-part reading and discussion series features a presentation by James Stohl, chairman of the Department of Religion at Albion College.

This series, "Destruction or Redemption: Images of Romantic Love" is sponsored by the Manchester Township Library and the Michigan Council for the Humanities. For more information, or to reserve a book, call 428-8045.



Hunting for the Best Buys? You'll Bag Them in the Classifieds.

NOTICE TO AREA RESIDENTS

THE TRANSFER SITE WILL BE CLOSING ON THURSDAYS STARTING ON DECEMBER 6, 1990 UNTIL THE SPRING OF 1991. THE SATURDAY HOURS WILL REMAIN THE SAME.

Nov. 29 & Dec. 6

At
Sutton Agency, Inc.
We're only
silent until you
need us for:

Homeowners • Farmowners • Automobile • Business and Commercial • Boatowners and Yacht • Workers' Comp Insurance.

For all your property insurance needs, your independent agent representing Hastings Mutual Insurance Company gives you the personal attention you deserve—with fast claims service, and at competitive rates.

That's why we say "We're your Silent Partner." But we're only silent until you need us.

AGENTS:

CONNIE WIDMAYER KATHRYN MARTIN SUSAN MANN
Phone 428-9737

136 East Main Street Manchester, Michigan
Monday-Tuesday-Wednesday-Friday-9 a.m. to 4:30 p.m.
Thursday-9 a.m. to 12 Noon

Hastings Mutual Insurance Company
We're only silent until you need us.



Wacker's General Store



Pepsi, Diet Pepsi
Mountain Dew
Pepsi Free
Sugar Free Pepsi Free
A & W Root Beer
Vernors
Sugar Free A & W
Sugar Free Vernors
Slice & Diet Slice

\$2.49

½ Liter 8 Pack plus deposit

2 Liter.....\$1.49 plus deposit

6 Pack Cans....\$1.89 plus deposit

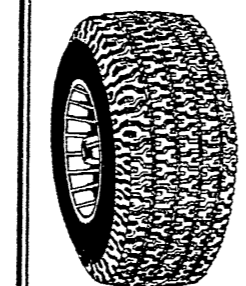
G.E. Wacker Inc.

Gasoline-Fuel Oil-Grease
Motor Oil-Diesel Fuel
9050 Chelsea-Manchester Road
Manchester, Mich. 48158

WINTER HOURS
Monday-Thursday 7 am-8 pm
Friday 7 am-9 pm
Saturday 8 am-9 pm
Sunday 9 am-8 pm

TIRES

Fall Tire Sale
Cooper Dean Tires



	Each	Set of 4
P155/80SR13	\$49.70	\$198.80
P165/80SR13	52.11	208.44
P175/80SR13	53.10	212.40
P185/80SR13	54.97	219.88
P185/75SR14	57.40	229.60
P195/75SR14	58.34	233.36
P205/75SR14	59.76	239.04
P215/75SR14	63.40	253.60
P205/75SR15	61.78	247.12
P215/75SR15	63.63	254.52
P225/75SR15	66.54	266.16
P235/75SR15	68.95	275.80

Prices include mounting, balancing & tax.
13" tire tread rating is 40,000 miles.
14" & 15" tire tread rating is 54,000 miles
Road Hazard warranty on tires at no additional cost.
Other makes of tires available at reduced prices but require a 2 day ordering period.

Sale Prices Good Thru 11-30-90.
EFFECTIVE NOVEMBER 15, 1990 WE WILL DISCONTINUE THE SALE OF GASOLINE



24 Hour
Wrecker Service

BENEDICT'S MARATHON SERVICE

327 West Main St. Manchester, Mich.
428-8576

MANCHESTER BAND BOOSTERS ANNUAL FRUIT SALE

SOLD TO _____
ADDRESS _____
CITY _____ STATE _____ ZIP _____
PHONE NO. _____

ITEM DESCRIPTION	PRICE	QTY	AMOUNT
JUICE ORANGES - 1/2 BOX	\$9.50		
JUICE ORANGES - FULL BOX	\$16.00		
NAVEL ORANGES - 1/2 BOX	\$11.00		
NAVEL ORANGES - FULL BOX	\$18.00		
GRAPEFRUIT - 1/2 BOX	\$9.50		
GRAPEFRUIT - FULL BOX	\$16.00		
TANGELOS - 1/2 BOX	\$9.00		
TANGELOS - FULL BOX	\$15.00		
DELIVERY - PER ORDER	\$2.00		
Total			
PAID IN ADVANCE			
DUE			

CUSTOMER SIGNATURE _____

(1990 Fruit Delivery Dec 7 & 8, or pick-up at the High School Band Room Dec 7 from 3-6 pm or Dec 8 from 9-1 pm to avoid the delivery charge)

To order, fill out & mail this Ad along with your check payable to: "Manchester Band Boosters"
424 E. Main
Manchester, MI 48158

or call 428-7125 and leave a message for a band student to contact you.

MARGIE'S UPHOLSTERY
6245 Brooklyn Road
Jackson
Wide Selection Of Fabrics
Pick-Up/Delivery Available
517-536-4230

Kirk Excavating
Sand—Gravel—Fill Dirt
Basements—Driveways
428-7938
Dave Kirk
14180 Schleweiss Road
Manchester

HO-HO-HOME MOVIES, SLIDES, AND PHOTOS ON VIDEO!
J. HENRY
Video Production Services
Box 264 Manitou Beach, MI 49253
(517) 547-7233

Want Ads Get Results

Poinsettias
Trees & Hanging Baskets
Quality Grown All Colors
\$3.75 and up
Christmas Cactus \$3.50 and up
Norfolk Island Pine \$4.50 and up

Schebors Greenhouse
14345 Logan Rd. Phone 428-8078 Manchester, Michigan
Monday-Saturday 9 am-5 pm Sunday 10 am-4 pm

CHEVROLET
A Good Selection of New and Used Cars On Our Lot
We Feature "Riverside Conversion Vans"
TIRB CHEVROLET & GEO
Phone 313-428-8212 or 313-428-8492
131 ADRIAN STREET MANCHESTER, MICHIGAN

Middle School Honor Roll

A HONORS
 8th Grade: Andrea Clark, Melissa Driessche, Charles DuRus- sel, Justin Ebersole, Sarah Feld- kamp, Jacob Gilbert, Beth Hamil- ton, Brent Hoelt, Diana Kruse, Hillary Horodeczny, Mary Lob- bestael, Karin Messing, Jenny Nobsisch, Linda Saunders, Vida Shurtliff, Karly Sweeton

7th Grade: Chris Beckington, Erin Binder, Leah Bragg, Kevin Detting, Steven DeVries, Bryan Duvall, Connie Hamilton, Mark Harris, Amy Ilavka, Darci Hock, Luke Hugel, Dan Kwolek, Chad LaRue, Mike Mann, Marcus Me- Namara, Erika Panches, Michael Ridenour, Jennifer Sahakian, Andrew Schook, Jessica Smith, Joe Tobias, Deborah Walter

6th Grade: Sarah Ahrens, Jessica Brooks, Stacey Burmeister, Lacey Curtis, Joanna Dett- ling, Karen Goodell, Andrea Hughes, Brad Kemner, Rebecca Koffman, Suzanne Lowery, Angelo Petrino, Jennifer Messing, Jill Pfau, Stephen Riske, Mi- chelle Schaible, Michelle Shuey, David Staten, David Sweeton, Katie Tolen, Elizabeth Wiggard

5th Grade: Patrick Chapin, Alyssa Chartrand, Angela Cooper, Ben DeVries, Lisa DuRussel, LeAnne Ellsworth, Eric Flint, Hannah Goodrich, Marie Haues- sler, Jayme Haskins, Lindsay Hosmer, Lindsay Jacob, Nicole Jensen, Jane Kallewaard, Matt Laskowski, Ryan Lentz, Herbert Mahony, Jennifer Manwaring, Mike Meranuck, Kelly Parr, Gin- ger Peters, Bryan Piendel, Ben Pietrowski, Tracey Staples, Jus- tin Turk, Eric VanBogelen, Jill Weidmayer

4th Grade: Daniel Alber, Ceara Brown, Landon Burkhardt, Sean Clifford, Jim Donnellon, Heather DuRussel, Ryan Fielder, Renee Foster, Brad Gere, Chris Gilbert, Lin Harris, Robert Hayden, Micah Jefferson, Debra Lobbestael, Nicholas Meyer, Emily Miller, Jayna Nickert, Jessica Noggie, Jessica Pope, Jessica Porter, Pam Preston, Ryan Roberts, William Roberts, Paul Schulte, Steven Spurr, Elizabeth Steele, Andrew Supers, Robert Taylor, Jon Way, Nicholas Weidmayer

3rd Grade: Kelly Acree, Gene Atherton, Jennette Branch, Randy Burkhardt, Rebekah Butterfield, Anthony Craig, Keith Detting, Harold DeLongchamp, Michael Dicks, Peter Doyle, Deon

B HONORS
 8th Grade: Wayne Baker, Rob Blatchford, Courtney Bentschnei-

Dwyer, Michael Ebersole, Jodi Feldkamp, Bryon Fent, Mary Ann Fillyaw, Noah Gordon, Sarah Gould, Meghan Greenwald, Kevin Haussler, Vicki Hamilton, Tim Hollosy, Tim Hough, Rebekah Jackowski, Chris Kemner, Jacob Klein, Lindsay Kloster, Nicholas Kozar, Cathy Lobbestael, Jenny Mann, Dana McCalla, Nicholas Niehaus, Melly Palomino, Jerrud Parr, Katie Roberts, Michelle Roos, Stefanie Schulz, Keenan Shurtliff, Emily Thornton

Band Boosters Meeting

The next Manchester Band Boosters meeting will be held on Wednesday, December 5, at 7:00 p.m. sharp. The meeting will be held in the band room of Manchester High School. Topics to be covered include closing figures on the football hot dog sales, the upcoming fruit sales, and future band trips. All parents of 5th through 12th grade band students are welcome to attend. We need your input.

Buy, Rent, Sell Thru The Classifieds

Mens & Womens Haircare

THE CUTTING EDGE

Stylists: Lisa Arnett
Dawn Moore

Mon.-Fri. 9-6, Sat. 8:30-12
Eves. by appt.

123 W. Michigan, Clinton 456-7900

Golden Anniversary



Mr. & Mrs. Wendell Reinhart

The children and grandchildren of Wendell and Shirley Reinhart are honoring their parents fiftieth wedding anniversary with an open house on Sunday, December 2, 2:00-5:00 p.m. at the Fellowship Hall of the Manchester United Methodist Church. They have resided in the area for thirty-eight years.

Wendell has retired from farm- ing and Manchester Tool and Die Company. He is also a past council member and belongs to the

Manchester United Methodist Church and Optimist Club.

Shirley is a member of the Manchester Methodist Church and belongs to Rowe's Corners Extension and the King's Daugh- ters.

Their hobbies are camping, traveling and their grandchildren.

They have two sons, Paul and Debbie Reinhart, and Dennis and Barbara Reinhart, and one daugh- ter, Janet and Jack Binder. They also have eight grandchildren.

WAMPLER DRW CONSTRUCTION CO.

DANIEL R. WAMPLER
517-456-4305

- New Homes
- Additions
- Siding
- Garages
- Roofing
- Decks

EMANUEL UNITED CHURCH OF CHRIST

Thursday, November 29: 12 Noon Senior Meal, 3:20 Cherub Choir, 4:30 Children's Choir, 4:30 Weight Watchers, 7 Basket Class

Saturday, December 1: Set Up Live Nativity Scene
 Sunday, December 2: 9 Sunday School, 10:15 Communion Worship, 4:30 Family Advent Night-Chili Supper, Crafts, Christmas Carols, Decorating Sanctuary Christmas Tree, 6pm 7th Grade Confirmation Class, 7pm 8th Grade Confirmation Class

Monday, December 3: 6pm New Members Class, 6:30 Scouts, 7 Girl Scouts

Tuesday, December 4: 12 Noon Senior Meal, 7pm Scouts

Wednesday, December 5: 12:30 Women's Guild Christmas Potluck and Fellowship, 6pm Bell Choir, 7:30 Adult Choir, 8pm AA, Al Anon

Thursday, December 6: 6pm Women of Emanuel Christmas Potluck

MANCHESTER UNITED METHODIST CHURCH

Wednesday, November 28: 1pm U.M.W., 3 Girl Scouts, 5:30 Girl Scouts, 7:30pm Koinonia Group

Friday, November 30: 10am Bible Study

Saturday, December 1: 8am U.M.M.

Sunday, December 2: 9:30am Sunday School, 10:30 Worship, 1pm Reinhart's 50th Wedding Anniversary

Monday, December 3: 7pm Girl Scouts

Wednesday, December 5: 11:30 Willo Circle Lunch Outing, 3pm Girl Scouts, 7:30 Koinonia group

FAITH COMMUNITY CHURCH

Saturday, December 1: 11am Teens meet at church to get and decorate a Christmas tree-lunch provided, 5pm Church bowling league

Sunday, December 2: 10am Morning Worship Service-nursery available, 11:20 Sunday School for all ages, 4:45 Choir Practice, 6 Evening Fellowship Service, 7:15 Lifeline for grades 9-12, 7:15 AWANA Leaders Meeting

Monday, December 3: 6:30 AWANA clubs for age 3 through 8th grade, Jr Varsity for grades 7 & 8, 7pm Prayer Hour & Bible Study

SHARON UNITED METHODIST CHURCH

Sunday, December 5: 11am Holy Communion
 Wednesday, December 5: 7:30 p.m. Charge Conference

BETHEL UNITED CHURCH OF CHRIST

Thursday, November 29: 6:15 Children's Choir, 7:15 Youth Choir Plus

Sunday, December 2: 1st Sun- day in Advent Communion Service

ZION LUTHERAN CHURCH

Saturday, December 1: WOZ Potluck

Tree Of Lights

Interfaith Counseling Service of Manchester invites you to join in the 2nd Annual Tree of Lights.

Tree of Lights dedication is scheduled for December 16, 6:30 at the Gazebo. The community residents are invited to join in the singing of Christmas carols begin- ning at 6:00.

For a minimum of a \$2 donation per light, a light will shine through the holidays for those people chosen to be honored or remembered. Those honored or their loved ones will be sent a special card.

The names of those remem- bered will be: (1) Recorded in a book of honor, (2) Read at the dedication, (3) Kept permanently in the Manchester Community Resource Center.

Registration forms for the Tree of Lights can be picked up at the following local businesses: First of America Bank, Comerica Bank, Great Lakes Bancorp, Krauss Pharmacy, and Baker's Dozen. Forms can be mailed to the Community Resource Center, P.O. Box 433 or they can be left at the same location. Each business is supplied with an envelope to collect information and donations. Local churches in the area will have registration forms and re- ceive donations for the Tree of Lights.

Proceeds from the Tree of Lights will be used to subsidize counseling for those who other- wise could not receive the ben- efits of the service.

Jolly Farmerettes Plus

The November meeting of the Jolly Farmerettes Plus 4-H Club was held November 18, 1990 at the home of Jodi and Kelly Parr. Flag pledges were led by Sarah Feldkamp and Andrea Clark. There were 14 members, 3 leaders and 4 guests present.

After the secretary's report by Andrea Clark and treasurer's report by Suzanne Lowery, com- mittee reports and new business was as follows:

Sunshine boxes and Christmas caroling will be held Saturday, December 15, from 1:00 to 4:00 p.m. at the home of Jodi Parr. Club members are to bring 10 food items for the boxes we'll pack. The club agreed to adopt a family for the holiday season.

Also under new business, we were given our sewing leader assignments. We also formed buddy teams which consist of 3 groups of 7 members in each. Our buddy teams will assist each other with various learning activities and help with questions or problems.

Andrea Clark gave a report on the livestock county meeting. Next meeting is January 9, 1991 at 7:30 p.m. Mrs. Feldkamp reviewed the letter about changes for Spring Achievement.

Under old business the follow- ing was reviewed. Members who attended and received county medals at the 4-H Recognition Breakfast were: Jodi Armentrout for Achievement, Michelle Mann for Citizenship and Leadership, Andrea Clark for Commodity Marketing and Goats, Sharon Goodell for Fashion Review and Clothing, Wendy Haussler for Demonstrations and Food Nu- trition, and Sarah Feldkamp for Demonstrations and Food Pre- servation.

Under leader's report, Mrs. Feldkamp asked for volunteers for a Saturday, December 8, 1:00 to 4:00 p.m. food project activity. They are: Joelle Armentrout, Phillip Krall, Karen Goodell, Nicole Jensen, Danny Feldkamp, Sarah and Jodi Feldkamp.

Mary Houghton, 4-H Youth Agent, visited the club meeting and led a problem solving activity. Sarah Feldkamp led the group in a game called People to People. Demonstration was given by Sharon Goodell on how to make a

doily basket. Refreshments were served by Kelly and Jodi Parr, and Kelly Parr played German caroling tapes for background music.

The meeting was adjourned.

Jodi Feldkamp
Club Reporter

Birth Announcements

GARRETT JAMES

Douglas and Irene Nickels of Cavanaugh Lake proudly an- nounce the birth of their beautiful son, Garrett James, November 20, 1990.

Maternal grandparents are Mr. and Mrs. Chet Woods of West- land. Paternal grandparents are Mr. and Mrs. Robert Nickels of Manchester.

BLAKE WILLIAM

Greg and Jill Bondy proudly announce the birth of their son, Blake William, born November 15, 1990 at St. Joseph's Hospital in Ann Arbor. Blake weighed 8 pounds 15 ounces, and was 21 inches long.

Blake has a sister, Tarah. His grandparents are Mr. and Mrs. William Bondy of Manchester, and Charles Detting of Black River.

King's Daughters

The Manchester King's Daugh- ters will meet for their Christmas pot luck at 12:30 p.m. December 6. Please remember your gift for Mott's Children.

Your advertising dollars do better in **the classifieds**

"Christmas In Saline"

4th Annual

ANTIQUQUE SHOW

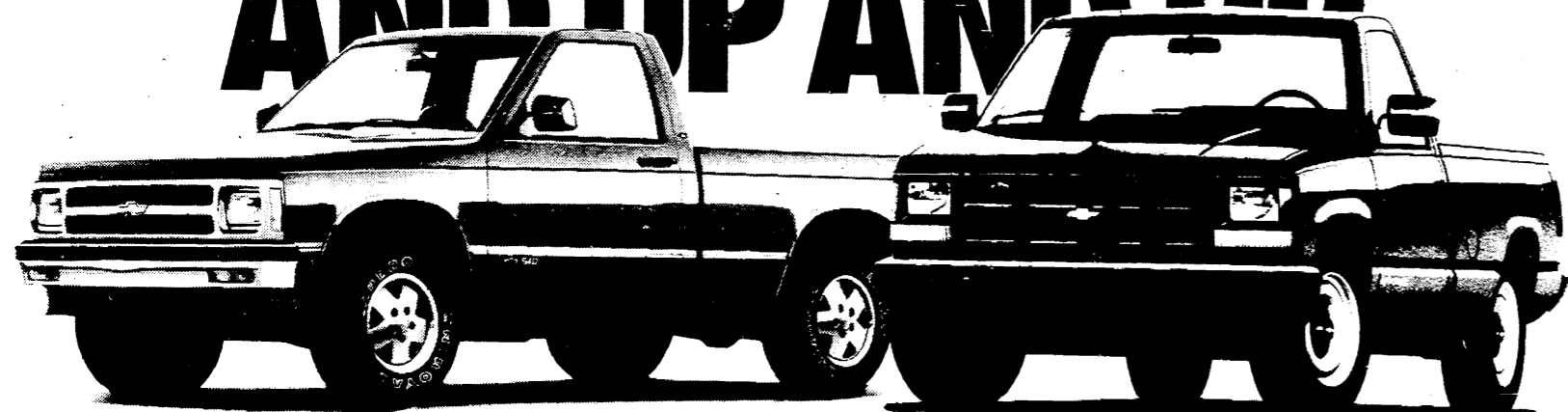
Sunday, December 2, 1990
9 am - 5 pm

Saline Middle School
7265 Saline-Ann Arbor Rd.
Saline, MI

Sponsored by: Saline Historical Society
Donation: \$2.00

Now get a \$450 gas rebate plus cash back with the purchase of a new Chevy pickup truck.**

YOUR GREAT 8 CHEVY DEALERS WILL FILL IT UP AND UP AND UP



S-10-\$1000 CASH BACK*

FULL SIZE-UP TO \$750 CASH BACK*



GREAT 8 CHEVY DEALERS.



ANN ARBOR
Rampy Chevrolet
3515 Jackson Rd.
663-3321

BRIGHTON
Champion Chevrolet
603 W. Grand River
229-8800

CHELSEA
Faist-Morrow Chevrolet
1500 S. Main St.
475-8663

CLINTON
Underwood Chevrolet
1070 W. Michigan Ave.
456-4181

DEXTER
Frank Grohs Chevrolet
7120 Dexter-Ann Arbor Rd.
426-4677

MANCHESTER
Turb Chevrolet
131 Adrian St.
428-8212

SALINE
Bill Crispin Chevrolet
7112 E. Michigan Ave.
429-9481

YPSILANTI
Jack Webb Chevrolet
1180 E. Michigan Ave.
481-0210

Chevrolet: GM's #1 selling make.

Interfaith Counseling TREE OF LIGHTS

November 23 - December 15

Minimum of \$2.00 per light for each person honored/remembered.

Information available at: Local Churches, Krauss Pharmacy, Bakers Dozen, First of America, Comerica, Great Lakes Bancorp.

Christmas Carolling/Tree Lighting
December 16, 6:00



All Types Home Improvement
Quality Materials & Workmanship

- | | |
|------------|-----------|
| Remodeling | Roofing |
| Additions | Decks |
| Kitchens | Bathrooms |
| Doors | Windows |
| Cabinets | Siding |
| Spas | Sunrooms |

Call
313-428-7797

WE MAKE HOUSE CALLS

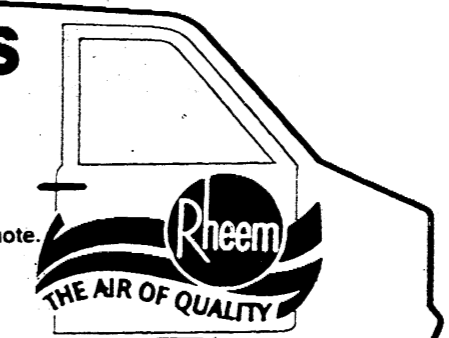
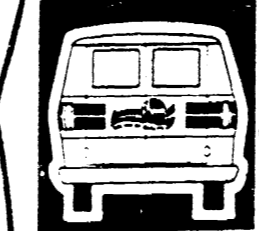
FALL FURNACE SPECIALS

Gas Furnace Cleaning \$4995 All Makes All Models

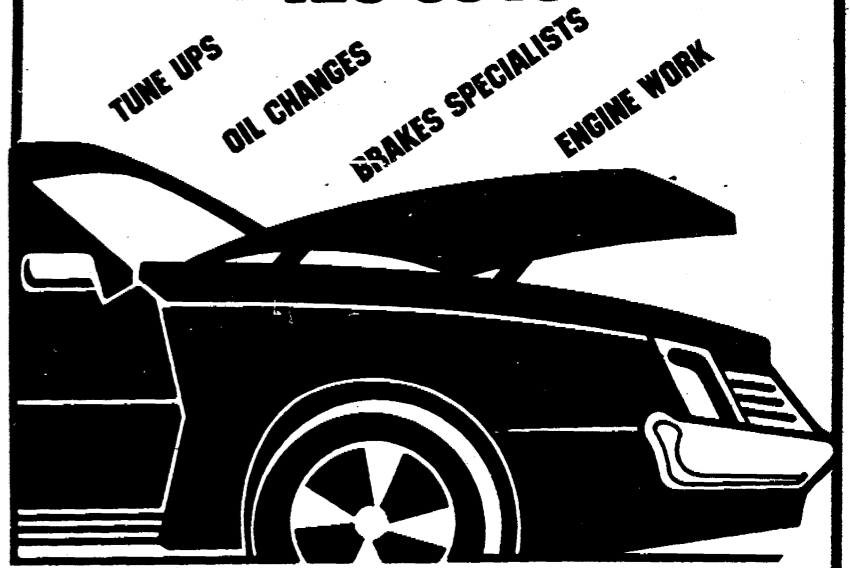
Oil Furnace Cleaning Also Available. Call For Price Quote.

AMERICAN HEATING & COOLING CONTRACTING CORP.
4540 Saline Rd., Ann Arbor

665-0623



Call Midwest Ford 428-8343



MIDWEST FORD

510 W. MAIN ST., MANCHESTER, MI.
Mon. & Thurs. 9-8 Tues., Wed.-Fri. 9-6 Sat. 9-2
1-313-428-8343 or 1-800-388-0046 TOLL FREE

Village Planning Commission

Regular Session
October 9, 1990

ROLL CALL

Present: Daverman, Palms, Little, Walton, Lowery, Gleason, Schiller (enter 7:39). Also present: Deb Havens. Absent: Way, Hinkley.

CALL TO ORDER

The meeting was called to order by chairman Daverman in the Council Room of the Village Hall at 7:37.

APPROVAL OF AGENDA

Daverman recommended the following addition and change:

Under Regular Business: A. Woodlands Protection Ordinance; change Preliminary Review to Introduction by Palms (Preliminary Review will take place at the next regular meeting.)

Add VI. A New Business: Honer residence, 107 Union St., Zoning Change Review
Enter Schiller at 7:39.

Lowery made a motion to approve the Agenda with the above change and addition. Little seconded the motion. The motion passed on a voice vote.

MINUTES OF PREVIOUS MEETING

A typographical error was noted on page 2. The second number from the top of the page should be 4 not 5.

Palms made a motion to accept the minutes. Schiller seconded the motion. The motion passed on a voice vote. A copy of Daverman's letter to the Mobile Home Park developers will be attached to the minutes of September 11, 1990.

REPORTS FROM VILLAGE ADMINISTRATION, COUNCIL, PLANNING COMMISSIONERS, COMMITTEES, WRITTEN COMMUNICATIONS, AND PETITIONS

The unapproved minutes from Council were reviewed. Gleason presented feedback from the school goal setting meeting. Schiller presented a written and oral report on group homes.

WOODLANDS PROTECTION ORDINANCE; INTRODUCTION BY PALMS

Palms noted that the model being used for the Manchester ordinance was from Novi. It seems to have a strong legal basis. He suggested working with a map right away, and explained the recommended process for the development of this map. Under such an ordinance, when a tree over a specific diameter is removed, it must be replaced by a tree of equal size. This tree may not necessarily be replaced onsite. This ordinance is aimed at the developer, not the individual landowner with a small lot. The use of a student forester was

suggested. The Novi ordinance is approximately 12 pages in length. Palms commented that he did not feel it was user friendly, however, and needed to be improved upon in that respect. The protection of "habitat" may be included in this ordinance. It was recommended that after final development of this Woodlands Ordinance, copies be sent to the Townships.

NEW BUSINESS HONER RESIDENCE, 107 UNION STREET - ZONING CHANGE REVIEW

Little made a motion to accept the petition for this zoning change review as current business. Lowery seconded the motion. The motion passed on a voice vote.

This petition requests that a change be made in the official zoning map. It concerns a parcel at 107 Union Street, which at present is "split"-zoned; one-half of the parcel being zoned commercial (C-2) and the other half residential (R-1B). The Village Council has asked the Planning Commission to review this case and questioned if an error may have been made when the zoning map was drawn up. The petition noted that this change would be consistent with and protect the residential use of Block 6. It was also noted that because the property is zoned one-half residential and one-half commercial, the property owners are unable to obtain mortgage approval. Commissioners felt that in terms of zoning, it seems to make sense to change the zoning from C-2 to R-1B in this case.

Daverman noted that a zoning change requires a public hearing. The hearing could not be held at this meeting, however, because the petition was not submitted in time for proper public notification. The public hearing will be scheduled for the next regular meeting.

MANCHESTER TOWNSHIP SURVEY

Areas of common interest were noted.

The possibility of holding an ad hoc committee meeting on the weekend of October 27 and 28 was considered.

MASTER PLAN

Daverman recommended drafting a memo to the Manchester Chamber of Commerce for input on their needs, future goals and direction.

Palms expressed a need to address concern over obtaining professional help on the Master Plan. It is too massive a job for Planning Commissioners to handle on their own time.

Daverman made a motion that the Commission request Village Council obtain quotes from a list of three planning consultants for

the purpose of working with the Planning Commission in utilizing our existing data from Bob Hotaling and our previous information, for the purpose of completing our General Development Plan. Schiller seconded the motion. Little recommended the Commission find out who the Township (Manchester) is using as a planning consultant. The motion passed on a voice vote.

ORDINANCES ADDED SINCE PRINTING OF CODE BOOK

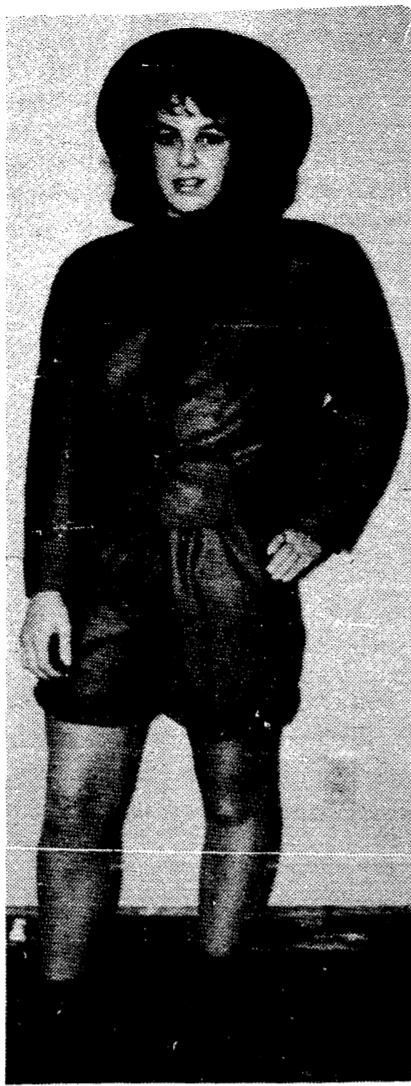
Gleason presented a list of the ordinances which have been adopted since the code book was published. She circled the ordinances which could effect decisions made by the Planning Commission and asked the commissioners to let her know which of these ordinances they were missing and she would obtain copies for them.

ADJOURNMENT

Daverman made a motion to adjourn the meeting. Lowery seconded the motion. The motion passed on a voice vote. The meeting adjourned at 9:14. The next meeting will be held November 13, 1990 at 7:30 p.m.

Susan Gleason
Recording Secretary

Andrea Clark Places Third In Annual Contest



On Saturday, November 10, the annual "Make It With Wool" contest was held at the Frandor Shopping Center in Lansing. The contest has categories which range from pre-teen to adult.

An outfit must be made from a fabric containing at least 60% wool. The garment is judged on the contestant for style, fit and color selection. It is also evaluated later as to construction. A style show takes place in the afternoon. Top winners in the junior and senior divisions advance to the national competition in January.

Andrea Clark, an eighth grader at Nellie Ackerson Middle School participated in the contest as a junior this year and placed third.

Andrea's hobbies include softball, basketball and volleyball, Sharon Church MYF, babysitting and 4-H. Angora goats and modeling are two of Andrea's favorite project areas.



Fall Sports Recognition Night

Photos by Jon

by Jon

Tuesday before Thanksgiving saw the young men and women who participated in football, girls' basketball, golf and cheerleading receive praise for their efforts.

Special plaques were awarded to:

Golf: Chris Wiethoff - Most Valuable and winner of the team handicap playoff; and Ben Lowery - Coach's Award.

Cheerleading: Most Spirited,

Varsity - Julie Hamilton; and, JV, Kim Reeb.

Girls' Basketball: Varsity, Most Valuable - Jennifer Kunzelman, Most Improved - Melanie Ball, Coach's Awards - April Barrett and Joanne Kemner; JV, Most Valuable - Adrienne Wallace, Most Improved - Sarah Riske, Coach's Award - Jill Faulhaber.

Football: Varsity, Most Valuable - Mike Blumenauer, Most Improved - Lineman Jen Okey, Most Humorous - Tim Fenelon,

Coach's Awards - Defensive Back Jeff Smith and Jesse Weidmayer. Special recognition in the area of sports' medicine went to Jennifer Hampton. There were no awards given to our Little Dutch, but they had a super 7-1 season, averaging 31 points per game for this 53-member squad.



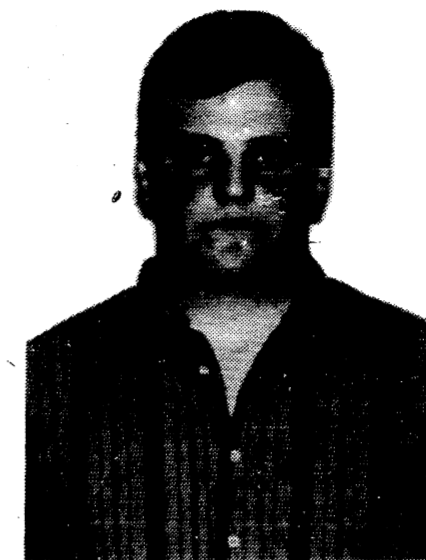
Varsity Girls Basketball
Melanie Ball, April Barrett, Joanne Kemner, Jennifer Kunzelman



Varsity Cheerleading
Julie Hamilton

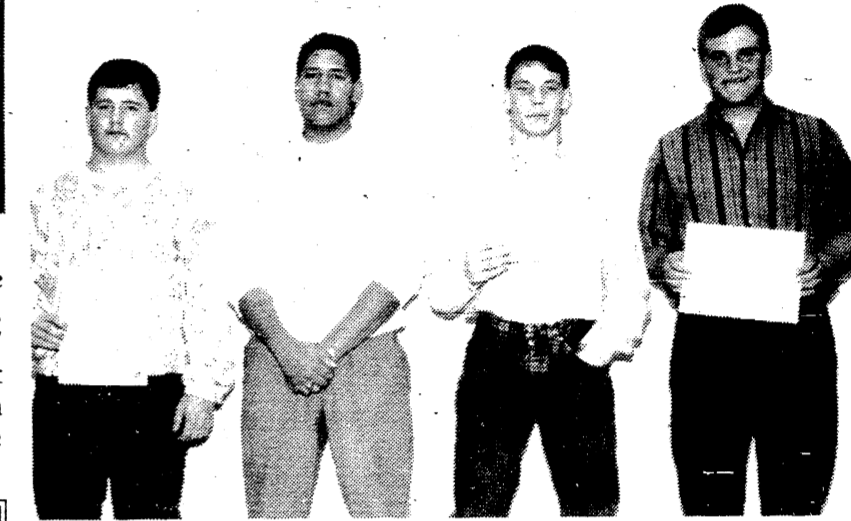


Golf
Ben Lowery



Varsity Football

Mike Blumenauer, Most Valuable Lineman Of The Year M.H.S., on first team - "Dream Team" Jackson Citizen Patriot, First Team Ann Arbor News All Region and the ultimate award - All State First Team.



Varsity Football School Award Winners
Tim Fenelon, Jen Okey, Jeff Smith, Mike Blumenauer



JV Girls Basketball
Adrienne Wallace, Jill Faulhaber, Sarah Riske

One For The Road.



Open a new C.D., Savings, Cash Fund, Checking, Jumbo, IRA or Keogh account with a minimum of \$5,000 and we'll send you off with a free Pierre Cardin travel bag—a \$30 retail value. It's made of black nylon with a reinforced handle and shoulder strap. It makes a great carry-on bag, soft-sided briefcase, or a compact workout bag. This offer is good through December 24, 1990 and deposits must be made with funds from other institutions.

At Great Lakes Bancorp, we'll not only lead you on the road to riches, we'll help you pack.



Call 1-800-544-4703 or Manchester 428-8379 • Ann Arbor 769-8300

Member FDIC

One For Down The Road.

6-Month CD*

7.43% Effective Annual Yield On 7.30%

We can also offer you impressive yields and the security of a Certificate of Deposit—good news in these uncertain economic times. Unlike some other investments, the rate of return is fixed and your money is federally insured.

Which may add up to one of the best investments around. Now and down the road.

* \$1,000 minimum deposit. Rates are subject to change. Substantial penalty for early withdrawal. Effective annual yield assumes funds remain on deposit for 1 year at same interest rate.



Call 1-800-544-4703 or Manchester 428-8379 • Ann Arbor 769-8300

Member FDIC

FUND RAISING

Manchester Sportsman Club
8501 Grossman Road
Friday 6:45 p.m.

Manchester American Legion
203 South Adrian Street
Saturday 7:00 p.m.



NEW & USED STEEL AT BARGAIN PRICES
• Structural • Plate
• Re-Rod
• Pipe • Square Tubing
(Quantity Discounts)

Jackson Fibers Co.
(517) 784-9191

1417 S. Elm St.
1 block north of High St.
Jackson, Michigan

PARR'S AUTO BODY

BODY WORK - PAINTING
FREE ESTIMATES
INSURANCE WORK
GLASS INSTALLATION
18481 W. Austin Road
Manchester, Michigan
Phone 313-428-9538

Licensed & Insured Contractor
24 Hr. Emergency Service



Stein Electric Co., Inc.
AG. • COMMERCIAL • INDUSTRIAL
INSTITUTIONAL • RESIDENTIAL
MOTOR CONTROLS & LIGHTING

RICK GRAUSTEIN
MANCHESTER, MI 48158
(313) 428-9050

NOTICE OF PUBLIC HEARING

Notice is hereby given that the Village of Manchester will hold a public hearing on December 17, 1990 at 8:00 p.m. in the Village Offices at 120 S. Clinton St., Manchester, Michigan for the purpose of reviewing a request for variance on the property located at 604 City Road, Manchester, Michigan.

The purpose of the hearing is to receive public comment on the proposed variance prior to the Board of Appeals resolution of approval or disapproval.

If you wish to comment on the application for variance but are not able to attend the hearing, you may send written comments to Karen Tucker, Village Clerk, Village of Manchester, 120 S. Clinton St., Manchester, Michigan 48158, or deliver written comments to the Village Hall, no later than 4:00 p.m. on Monday, December 17, 1990.

Karen Tucker
Village Clerk

Nov. 29 & Dec. 6

Strikes N Spares

Jolly Keglers		HIGH TEAM SERIES ACTUAL	
Dutch Country Kitchens	56 28	Cooks	2214
Manchester Automotive	53 31	HIGH TEAM GAME HDCP	
Robertson-Morrison	46 38	Steve Walz Construction	786
Manchester Car Wash	44 40	HIGH TEAM SERIES HDCP	
Bollinger Sanitation	42 1/2 41 1/2	Cooks	2238
Carol's Cut-N-Curl	39 45	Manchester Women	
Grass Lake Automotive	30 54	Bill's IGA-8	238.5 121.5
Manchester Tool & Die	25 1/2 58 1/2	Emerson & Wesch-3	213.0 147.0
INDIVIDUAL GAME		Mann Realtors-10	202.0 158.0
W. Tirb	199	Weatherwax Drugs-5	186.0 174.0
S. Merriman	198	Floral Fantasy-2	172.5 187.5
J. Merriman	191	McMaster Ford-1	170.5 189.5
INDIVIDUAL SERIES		3 Lakes Supply-9	168.5 191.5
K. Richardson	501	Haarer's Mtg Place-6	160.5 199.5
S. Merriman	497	Gentner Trucking-4	144.5 215.5
M. Freeman		Brooklyn Products-7	144.0 216.0
J. Merriman	495	INDIVIDUAL HIGH SERIES	
HIGH TEAM GAME W/HDCP		Kit Mosko	520
Carol's Cut-N-Curl	954	Sue Anderson	488
Bollinger Sanitation	905	Marilyn Russell	484
Manchester Tool & Die		INDIVIDUAL HIGH GAME	
Manchester Car Wash	875	Terri Fugate	197
HIGH TEAM SERIES W/HDCP		Sue Anderson	193
Carol's Cut-N-Curl	2692	Kit Mosko	187
Manchester Automotive	2548		
Bollinger Sanitation	2539		
200 GAMES OF THE WEEK			
K. Powers	204		
500 SERIES OF THE WEEK			
K. Richardson	501		

Manchester Town Club		This holiday season it could be important to note the many studies linking certain prescription and over-the-counter medications to driving accidents. One medication drivers should be particularly careful about is an antihistamine. It may make many allergy sufferers drowsy. More importantly, drivers tend not to be aware of their impaired driving performance after taking the medication. Fortunately, prescription antihistamines are available that relieve allergy symptoms without causing drowsiness. Ask your doctor about it. This winter, particularly during the holidays, safety conscious drivers should not only not drink and drive, they should be careful of the medications they are taking.
Cooks	55 29	
Thompson's Pizza	53 31	
Gemini	48 36	
Steve Walz Construction	47 37	
Waynes Windshield	47 37	
P.M.S.	42 42	
Klincs Excavating	37 47	
Wampler Construction	36 48	
Tony Toms	35 49	
500'S		
Cheryl Mitchell	522	
Terri Scherdt	513	
Rebecca Dowley	510	
Phyllis Baker	507	
HIGH INDIVIDUAL GAME		
Pat Hanselman	234	
Terri Scherdt	226	
Donna Dault	221	
HIGH INDIVIDUAL SERIES		
Donna Dault	572	
Terri Scherdt	562	
Pat Hanselman	553	
HIGH TEAM GAME ACTUAL		
Steve Walz Construction	799	

Suzanne's Interior Decorating
Service In Homes

October-November Special
40% Off
Verticals & Mini Blinds

Suzanne Vallie
18131 SHARON VALLEY ROAD
MANCHESTER, MI 48158
(313) 428-9193

- DRAPERIES
- BEDSPREADS
- FEATHERED BEDS
- DOWN COMFORTERS & PILLOWS
- VERTICALS
- MINI-BLINDS
- PLEATED & LAMINATED SHADES

313-429-4885 COUPON 517-423-2148

Saline in the Saline Shopping Center

1ST OPTOMETRY
eye care centers

Dr. Thomas Cunningham

99 Daily Wear Soft Contact Lenses

128 W. Chicago Blvd.
\$10 OFF (with coupon)

Prescription Eyeglasses

DOES NOT APPLY TO OTHER DISCOUNT OFFERS OR PRIOR ORDERS

BACK DOOR PARTY STORE
500 Ann Arbor Street Phone 313-428-9287 Manchester, Michigan

BEER WINE KEG BEER

MICHIGAN 1010

Instant and Daily Lottery Tickets

UNION 76 GAS Full Service and Self Serve

DAN'S WESTSIDE AUTOMOTIVE

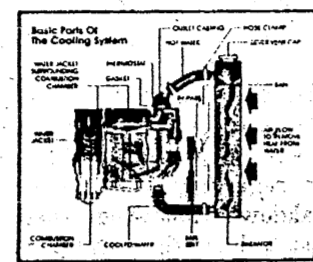
660 West Main Street Phone 428-9455 Manchester, Michigan

WHEN THE SNOW FLIES WILL YOUR CAR BE WINTERIZED?

Inspections of the Cooling System are Crucial to the Engines Health

How To Prevent Car Heart Attacks.

Unfortunately, most car owners don't realize that cooling system parts should be replaced *before* they fail. Like heart attacks in people, car heart attacks can often be prevented with regular inspections of the cooling system.



Today's cars operate at higher engine speeds with more equipment under the hood, smaller engine compartments and reduced radiator size. So the cooling system — particularly the thermostat, which constantly opens and closes to regulate coolant flow — is under a

lot of stress. In fact, the cooling system removes twice as much engine heat as the exhaust system.

FOR ONLY **\$34.95**

COMPLETE INSPECTION INCLUDES:

1. Flush Cooling System
2. Check Operation of Thermostat.
3. Test Battery and Charging System.
4. Clean Battery Cables.
5. Inspect Radiator Cap, Belts and Hoses.
6. Fill System With Up to 2 Gallons of New Antifreeze.

Check The Low Price For Your Car

Exhaust Systems For Escort \$85.12
Chevy Celebrity \$82.64

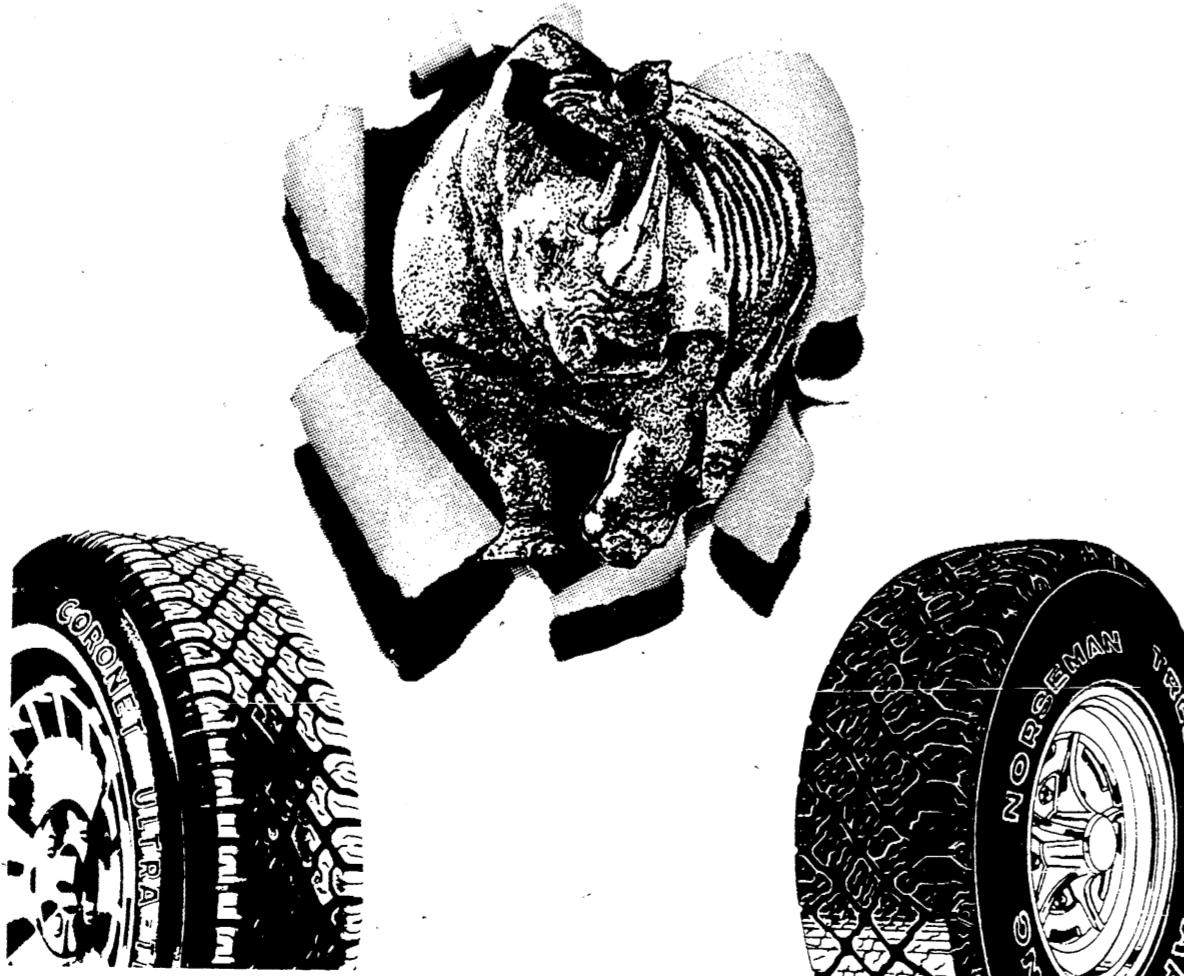
WE CUSTOM BEND DUAL EXHAUST FOR YOUR CAR OR TRUCK

Front End Alignment Most Cars and Light Trucks **\$24.95**

Cornet Ultra-Trac On Sale NOW!!

ARMSTRONG TIRES

Built Better.... Cost Less



CORONET ULTRA-TRAC

- All-season criss-cross tread design
- Twin steel belts give superior performance
- "A" traction grade, M & S rated, 40,000-mile treadwear warranty, road hazard coverage
- 19 sizes to choose from including 70 Series

NORSEMAN TREDLOC® A/S

- Block style criss-cross tread ideal for on/off-road driving
- Tredloc® belting system for superior durability
- All-season, all-weather and all-position use
- 40,000-mile treadwear warranty

Board of Education

Regular Meeting
November 19, 1990
Unofficial Minutes

October 31, 1990 in the amount of \$988,340.93. Post approved bills payable of \$459,700.26.

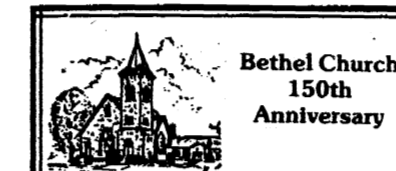
The meeting was called to order at 7:45 p.m. by vice president Gaughan with the Pledge of Allegiance.

Members present: Gaughan, Gordon, Klauwe, VanBogelen, Turk, Gilbert.

Members absent: Sahakian

The minutes of the regular meeting of October 15, 1990 and the special meeting of November 13, 1990 were approved as presented.

The financial report and bills payable were approved as presented with a cash balance as of



Lithophane Ornament
on sale now at
The Flower Garden

CORRESPONDENCE

A thank you note was received from the Thomas Butterfield family and read aloud by vice president Gaughan.

NEW BUSINESS

Fourth grade teacher James Krzyzaniak is to be placed on tenure effective December 1, 1990.

Steve Vleck has been appointed varsity wrestling coach for the 1990-91 sport season and Gay Perry has been appointed middle school track coach for the 1990-91 sport season.

The Board approved a request from Nondus Bus to take a leave of absence in the spring of 1991. Nondus has been invited to travel to the Soviet Union and Hungary as a member of a delegation representing the education of gifted children. The trip is sponsored by the Citizen Ambassador Program of People to People International.

Mrs. Judy Steele was present to express her concern regarding

transportation procedures during half-day sessions and her child being dropped off at the wrong stop. She requested that Board members review current procedures.

General bus specifications being considered for two new buses were reviewed. Mr. Howard Poley, mechanic, was present to answer questions and concerns from Board members on the specifications.

The Board approved a fee of \$150 per month, for a designated period of time, to be paid Midwest Ford for the use of a new vehicle for the driver education program.

Installation of a security system from Safety Systems, Inc., for the high school and central office was approved.

The Board moved to the General Session of the agenda.

PUBLIC COMMUNICATION

Mr. and Mrs. Joe Tobias were present and expressed their concern regarding a communication breakdown following their request to have their child dropped off at a different bus stop. This resulted in the child being confused and temporarily lost. Superintendent Niedzwiecki assured them that the matter would be investigated and he would respond to them.

ADVOCATES' REPORT

Ms. Yvonne Henry, principal of Klager Elementary, spoke on "Michigan Friends of Education"; Ms. Mary Nosbisch, fifth grade teacher at Nellie Ackerson Middle School, reported on "Autism in the General Education Classroom"; and, Mr. Russell LeBlanc, principal of Manchester High School, described "South & West Consortium Vocational Programs".

DISCUSSION ITEMS

Superintendent Niedzwiecki apprised the Board on the progress of the Facilities Planning Committee; CBA programs and courses sponsored by the Michigan Association of School Boards were reviewed by the Board; the 1990-91 district goals were adopted as presented; Board members briefly discussed and prioritized Board goals.

Superintendent Niedzwiecki informed Board members that Pat VanDomelen from Project Outreach will be here Wednesday, January 16 to present the report of the telephone survey which was conducted in October.

The meeting was adjourned at 10:10 p.m.

Buy, Rent, Sell Thru The Classifieds

DAN'S WESTSIDE AUTOMOTIVE

660 West Main Street Phone 428-9455 Manchester, Michigan

Multi-Mile

Made by Kelly Springfield

All season steel belted radial 50,000 mile tread rating. Price includes new valve stems, mounting, balancing, sales tax & road hazard.



	1 Tire	4 Tires			
155/80R13	\$40.48	\$161.91	205/75R14	48.86	195.44
165/80R13	42.13	168.52	205/75R15	50.18	200.72
175/80R13	42.81	171.23	215/75R15	51.93	207.71
185/80R13	44.38	177.51	225/75R15	54.16	216.65
185/75R14	46.22	184.87	235/75R15	55.59	222.35
195/75R14	46.94	187.74			

Manchester Is Coming Up Daisies

On Monday, November 19, 1990, Daisy Girl Scout Troop 543 celebrated their Investiture ceremony with a family potluck supper at the Manchester United Methodist Church.



Front (l-r): Jessica Kozar, Cori Chrestensen, Rebecca Alber, Elizabeth Okey, Elisabeth Whitman, Casey Young. Back (l-r): Erica Taylor, Dara Jose, Nicole Beach, Christine Fairbanks, Cori Steele, Katie Ray, Melissa Luckhardt, Marie Beaudoin, Jackie Vigilanti. Not pictured: Michelle Krusch, Jennifer Meyer, Katharine Meyer.

Hrs. Mon-Fri 5-8	White Pine	\$20.00
Sat 9-4	Scotch Pine	\$25.00
Sun 11-4	Spruce	\$25.00
	Spruce 7'-8'	\$30.00

Support The Men's Club

Christmas Tree Sale

100% of proceeds go back into the community

FAHEY Realty

215 E. MAIN STREET
MANCHESTER, MICHIGAN 48158

OFFICE: 313-428-9298
RES: 313-428-7188

135 W. MICHIGAN AVENUE
CLINTON, MICHIGAN 49236

1-517-456-7491

MEMBER LENAWEE COUNTY BOARD OF REALTORS
MULTIPLE LISTING SERVICE

KRAUSS PHARMACY AND LAUREL HOME HEALTH CARE

CARRYING A FULL LINE OF HOME HEALTH CARE EQUIPMENT

HOSPITAL EQUIPMENT
*Beds *Oxygen *Walkers *Bedside commodes
*Ostomy *Canes *Nebulizers

ORTHOTICS
*Wrist splints *Knee braces *Traction
*TENS units *Cervical collars
*Back cushions *Cervical pillows

DIAGNOSTICS
*Blood glucose meters *Stethoscopes
*Digital blood pressure monitors
*Manual blood pressure kits

let your words do the talking in the **CLASSIFIEDS**

MICHIGAN PEAT SALES: Black dirt for sale, \$12 a yard delivered. Fast delivery. 428-9664 tfn

C & B PAINTING: Interior-Exterior. Free estimates. Contact Charles E. Benedict. Phone 428-7136 or 428-7416 tfn

LOST OR FOUND A PET? Call Humane Society 662-5585 tfn

LITTLE WACK EXCAVATING: Licensed and insured. Basements, drainfields, digging, bulldozing, trenching, black dirt, sand, gravel. Snow removal and salting. Paul Wackenhut. 313-428-8025 tfn

MERRIMAN INSULATION: Free estimates. Blown-in cellulose professionally installed. George Merriman. Phone 517-592-5527 tfn

PIANO TUNING AND REPAIR: Qualified technician. Ron Harris 475-7134 tfn

MANCHESTER ANTIQUE MALL: 35 Dealers. Open 7 days 10-5. 116 E. Main. 428-9357 tfn

FIELDER PAINTING: Interior and exterior. Free estimates. Senior citizen discount. Phone 428-8506. tfn

AVAILABLE FOR WEDDING receptions, parties, meetings: Hall rental \$175. \$40 cleaning. Catering available. For further information, call 428-8393 or 428-7637 tfn

WALKOWE'S HOME IMPROVEMENT COMPANY: Phone 313-428-8468. Seamless aluminum gutters for low prices, and dependable service. tfn

BLACK DIRT FOR SALE: By the pickup load or delivered. 428-9265 after 6 p.m. tfn

TWO BEDROOM APARTMENT in Village on river. Washer/dryer, stove & refrigerator. \$425/month. Call 428-9150, leave message tfn

ALBER EXCAVATING: Basements, drainfields, driveways, finished grade, water and sewer. Call 313-428-8636 tfn

LITE DECORATING: Wall-papering, trim painting. Juli Robinson. 428-9657 tfn

COPIES IN YOUR CHOICE OF gold, lavender, yellow, mint green, ivory or peach. Reasonable prices. THE MANCHESTER ENTERPRISE, 150 E. Main. tfn

HELP WANTED: All positions, full time, part time. Apply in person. Chelsea Big Boy tfn

2 BEDROOM APARTMENT IN Village of Manchester. References. 428-9380 tfn

INSULATION AND ROOFING: Custom insulation. No plugs in your siding. No chemicals added. Quality workmanship guaranteed. Senior discount. Licensed and insured. 14 years experience. Full House Insulators. Call Mike for free estimate. 313-428-9692 tfn

SMALL TIME VIDEO: Video service to meet every need—wedding specialty. Very reasonable rates. Lester Guest. 428-8962 evenings. 11/29/p

SUBSTITUTE BUS DRIVERS WANTED: Apply at Manchester Community Schools, Transportation Dept., 710 E. Main, 428-7320 11/29

FARM ANIMAL CARE Service: Evenings, weekends, holidays. Experienced, references, dependable. Specializing in horses. 428-8005 tfn

SEASONED HARDWOODS: 1 face cord \$55, 4 at \$50 each, 12 at \$45 each. Delivered. 313-439-8978 1/3/91/p

CHRISTMAS TREES FOR SALE starting November 24th. 639 West Main. tfn

PARENTS OF CHILDREN 1-8 years: Little Dutch Child Care Center offers a variety of programs for Toddlers, Preschoolers and Latchkey children in our newly expanded center. Contact the Program Director at 428-8988 for enrollment information. tfn

WANTED TO BUY: Seasoned tree tops or downed trees. 313-439-8978 12/6/p

EAVESTROUGH CLEANING: Snow plowing, hauling and more. Call T & N Services 428-7002 11/29

RAFALSKI'S SNOW REMOVAL Commercial and residential. Plumbing, drywall, painting, masonry, etc. Call for estimate. 313-428-9772 12/6

LOVING COUPLE WISHES TO ADOPT newborn. Working with a licensed Michigan agency. Call collect anytime. (313) 429-8173. 12/6/p

SUPPORT THE MANCHESTER MEN'S CLUB: Purchase your Christmas tree from them. See ad on page 3. 12/6

BEAUTIFUL APARTMENT for rent: 1 bedroom on Main St. Gas hot air, air cond., gas hot water. \$375 plus utilities. References. No pets. 428-7886. Available December 1st. 12/6

WANTED FULL OR PART TIME night help. Apply Village Pizza. 12/6

FOR RENT: 2 BEDROOM apartment. Available January 1st. Downtown. Call 428-8676 12/6

NEEDED-BABYSITTER: Most Tuesdays, 4pm-10pm. Prefer someone who lives in town or has own transportation. 428-7542 p

-FELDKAMP'S CHRISTMAS TREES- Long and short needle, U-cut or we cut. Fridays and Saturdays 9-5, Sundays 1-5, starting December 1. Other days by appointment. Reno & Nancy Feldkamp, 1 1/2 miles west of Wacker Oil on Pleasant Lake Rd., then 1/2 mile north on Smythe Rd. 12/13

DOG TRAINING CLASSES: Obedience, conformation, field, retrieving. Small classes, lots of attention. Indoor training area. 475-2296 11/29

KIWANIS BIRD SEED SALE: 25# mixed seed-\$5. 5# jug thistle seed-\$4.50. Bird seed and thistle feeders-\$8. Service project for Manchester Family Service. Call 428-7722 or 428-8976 by December 6th

FOR SALE: Chest of drawers and dresser with mirror. Dark wood veneer. \$25 takes both. 428-7542.p

REWARD! Small German Shepherd mixed, black/brown, answers to Dancer. Any information helpful. 936-8257 days, ask for Tina. 428-9382 evens. p

FOUND: A pair of bifocal glasses near Division and City Rd. Call 428-8682 p

FOR SALE: 26" Magnavox console color TV, \$75. 428-8831 p

FOR SALE: Double seat wooden folding chairs, \$2 per set, cash and carry at Emanuel Church, Manchester. Phone 428-8359.

McCULLOCH CHAIN SAWS, small engine repair, welding. Chain saw chains sharpened, 16"-\$2.50. Earl Alber, 639 W. Main, Manchester, 313-428-8707 12/20

Card Of Thanks
A special note of thanks to the Flower Garden of Manchester for providing the lovely daisy floral centerpieces for our tables. Also, a special thanks to Lucile Bruner, the TSD for the Manchester cluster of Girl Scouts, for her very informative talk, and to Mr. Bruner for video taping and photographing the evening. Thanks to everyone who participated in making this evening so special for all our Daisies.

Garland's Pub
M-52—Austin Rd. Manchester
Open Monday-Saturday 7 am-2 am
Sunday 12 noon-10 pm
Live Band Fri. & Sat.
Call for details - 313-428-9293

the Charles Reinhart Co. Realtors
DEBORAH ENGLEBERT, Realtor
Res. Phone: 313/475-8303
2452 East Stadium Blvd.
Ann Arbor, Michigan 48104
Phone 313/971-6070

Classified advertising will be \$2.75 minimum charge for 20 words or less and 8¢ for each additional word. All classified ads are payable in advance, if not, a billing charge of \$1.00 will apply. Deadline for classified advertising will be 10 A.M. Tuesday for that week's publication. Cards of Thanks will be \$5.00 minimum charge for 50 words or less with a charge of 8¢ for each additional word.

To Our Subscribers
If you are experiencing delayed delivery of your Manchester Enterprise, please contact us at 428-8173 or drop us a card with your name and address. The paper is mailed every Wednesday A.M. from Manchester under a 2nd Class mailing permit and should reach you as quick as 1st Class mail.

Buy, Rent Sell Thru The Classifieds

Columbia Cabinetry
205 Irwin Street
Brooklyn, Michigan
Custom Cabinets
Kitchen Re-facing
Call anytime for appointment
517-592-2292 517-536-4425
Chris Parr

BEEF SUET
Provides quick energy to all birds, particularly in winter. Special appeal to insect-eating birds like Woodpeckers and Nuthatches.

ATLAS Of Manchester
18875 W. Austin Rd.
Manchester, MI
PHONE 313-428-7077
Mon.-Fri. 9 am - 6 pm
Sat. 8 am - 4:30 pm

PERSONALIZED Christmas Cards and Stationery

This year send holiday greetings on personalized Christmas cards and stationery.

Come in and see our fine selection.

The Manchester Enterprise
150 East Main St.
Manchester, MI 48158

Garland's Piggy Bank Keychain

If you have two cars, using the more efficient one will help save us two million gallons of gas a day.

Money Management

TAX SMART VACATIONS- HERE AND ABROAD

You've just received a flyer for a conference in Orlando that would provide a great market for your new software program. What's more, you've been planning to take the family to the new MGM theme park. Wait a minute. This is beginning to sound like a vacation and you certainly don't want to jeopardize writing off your business travel expenses. With careful planning and knowledge of the tax laws, you won't have to, says the Michigan Association of CPAs. Combining business and pleasure can still pay off providing you follow IRS regulations carefully.

Domestic Travel
When you travel strictly for business, your tax write-offs are clear cut. As a general rule, you may deduct your total tab for transportation and lodging, and 80 percent of your cost for business meals and business entertainment expenses. But when you start to mix business with fun in the sun, your travel deductions become a bit tricky. If your trip is primarily for business purposes, you are still entitled to deduct 100 percent of your total transportation to and from your destination, as well as the costs for lodging and meals (subject to the 80 percent limitation) for the business portion of your trip. Deciding whether the trip was primarily business or pleasure can be a tough call, but the amount of time you spend on each activity is often an important determining factor. If you spend more than half your time at business, the trip can generally be said to be primarily for business.

Traveling Abroad
Different rules apply if your business destination takes you outside the United States. If you travel overseas and the entire time is spent on business activities, you may deduct your traveling costs, as well as your lodging and meals costs (subject to the 80 percent limitation). However, if your trip was primarily for business purposes, but you took part in some nonbusiness activities, you may have to allocate your travel costs (including meals and lodging en route) between your business and pleasure activities. Suppose you have business to conduct in Switzerland. You wrap up a few deals sooner than you expected, and then decide you couldn't possibly leave without experiencing the Swiss Alps. If you calculate that you spent 80 percent of your trip on the slopes, IRS regulations would normally allow you to deduct only 70 percent of your transportation and lodging costs. But there are exceptions to this rule.

FOX TENT AND AWNING CO.
By a member of the Home Depot Inc.

CUSTOM TOTE BAGS
Tote bags for your school, club or organization. Have yours done soon for holiday gift giving.
617 S. ASHLEY • P.O. BOX 1164, ANN ARBOR • (313) 665-9126

Pennington LP Gas

WANTS YOUR PROPANE BUSINESS

- 36 Years of Dependable Propane Experience
- Great Service
- Free Installation
- \$1.00 Lifetime Lease on Bulk Tanks
- 24 Hour Emergency Service
- Locally Owned and Operated
- Competitive Prices

Pennington LP GAS
Count on us to keep the heat on!

9155 W. Weston Rd. / P.O. Box 37
Morenci, MI 49256
(517) 458-7107
Toll Free (800) 365-5599

13400 M-52 / P.O. Box 490
Stockbridge, MI 49285
(517) 851-7577
Toll Free (800) 274-5599

ities, you may deduct your traveling costs, as well as your lodging and meals costs (subject to the 80 percent limitation). However, if your trip was primarily for business purposes, but you took part in some nonbusiness activities, you may have to allocate your travel costs (including meals and lodging en route) between your business and pleasure activities. Suppose you have business to conduct in Switzerland. You wrap up a few deals sooner than you expected, and then decide you couldn't possibly leave without experiencing the Swiss Alps. If you calculate that you spent 80 percent of your trip on the slopes, IRS regulations would normally allow you to deduct only 70 percent of your transportation and lodging costs. But there are exceptions to this rule.

If you are out of the United States for more than seven days, you may still deduct your full costs of transportation to and from your destination if business is the primary reason for your travel and you meet any one of the following conditions:
- You are not self-employed, are not related to your employer, are not a managing executive, and are reimbursed or receive a travel expense allowance.
- You have no substantial control over arranging the trip. (This does not include control over timing of the trip.)
- You spend at least 75 percent of the total time you were outside the U.S. on business activities. (Count both the day the trip began and the day it ended in calculating this percentage.)
- You can establish that a personal vacation was not a major consideration in planning the trip even if you own your business, are related to your employer, are a managing executive, or have substantial control over arranging the trip.

If you spend seven days or less outside the United States, you may deduct the total cost of travel to and from your destination regardless of how much time you spend on business, provided the primary reason for your making the trip was for business. (In calculating the number of days, do not count the day you left the United States but count the day you return.) So if your employer asks you to attend your division's one-day sales meeting in London

If you are still confused about which travel expenses are deductible, consult your CPA. He or she should be able to review your individual circumstances and advise you accordingly.

Safe Sawing

"Wouldn't you love curling up in front of a blazing log fire on a cold winter's night? You could, but only if you have enough firewood stockpiled. Before you start sawing, however, use your safety sense, says experts.

- Here's some advice on safe sawing:
- Always wear protective clothing; work gloves, eye and ear protection and chain saw protective pants or chaps.
 - When cutting, stand on firm ground to one side of the cut. Keep an escape route open should a log start to roll. Put larger logs on a sawhorse first. Never stand on a log pile.
 - Many felled trees will have a trunk with a downward bend. If that's the case, start the first cut on top of the trunk. Make the final cut from underneath to avoid pinching the saw.
 - When cutting a pile of wood, make sure the chain saw tip does not come in contact with any logs behind the one you are cutting. Such contact may cause the saw to "kickback".

A Christmas Wish

Country Christmas Craft Show

Friday, November 30, Saturday, December 1 and Sunday, December 2

10:00 a.m. - 5:00 p.m.

Barbara Walter
10856 M-52
Manchester, Michigan 48158
(313) 428-9272

Kleinschmidt True Value Hardware
19860 Sharon Valley Rd. Manchester, MI
Phone 313-428-8337

Monday-Friday 7 a.m.-6 p.m. Sunday 10 a.m.-4 p.m. Saturday 8 a.m.-5 p.m.

Dec. 1st SATURDAY 1-3 p.m.

BARGAIN OF THE MONTH
14.99 While supplies last 10-Cup Automatic Coffee Brewer DESIGNS
QUANTITIES LIMITED

CHRISTMAS TREE STANDS

4 1/2 Inch \$5.99
5 1/2 Inch \$7.99

SAVE OVER 40% OFF Reg. Price
NOW \$4.99
Limit 2 With Coupon

COUPON
100 Light String-To-String Light Set
Reg. Price \$8.99
Expires Dec. 2nd

Bring the kids out to Kleinschmidt's on Saturday, December 1 to visit with Santa from 1-3 p.m.

Village Council Agenda

December 3, 1990

1. Call meeting to order
2. Pledge of Allegiance to Flag
3. Minutes of previous meeting
4. Approval of Agenda
5. Correspondence
6. Public Participation: Mr. Glen Burkhardt of McNamee, Porter & Seeley - Status Update on State Revolving Loan Fund
7. Treasurer's Report
8. Accounts Payable Reports
9. A. Sheriff's Report
B. DPW Report
C. Ordinance Committee
D. Solid Waste & Recycling
E. Village Hall Maintenance
F. Parks Commission
G. Finance Committee
H. Planning Commission
I. Clerk's Report
J. Other
10. Old Business
11. New Business
12. Adjourn

Freedom Township

PROPOSED SYNOPSIS
November 13, 1990

The meeting was called to order with all board members present.

Minutes and treasurer's report were approved with \$40,955.48 in the General Fund and \$444.10 in the Liquor Fund.

Various communications were read and discussed including fire runs, upcoming seminars, and several newsletters. The board received a resolution from the Washtenaw County Road Commission making Ernst the through road at its intersection with Bemis Road. Assessor Little, assisted by the County Equalization Department, appeared at the State tax tribunal hearing concerning several appeals for assessment relief. The township prevailed on half of the appeals. Uphaus reported that the zoning ordinances are being compiled and that nothing in writing has been received from the Holloway gravel pit concerning its request for escrow funds.

Under old business, the ordinance enforcement officer has been contacted on the Fiegel property complaint.

New business included discussion of possible appointments to the zoning planning and appeals boards where terms are due to expire. Also discussed was a recent rash of attacks on sheep in the township. A sheriff's report is needed to claim reimbursement from the county in sheep-kill cases.

Bills #2897 through 2931 were approved for payment. Meeting adjourned 9:45 p.m.

Submitted by:
Julie A. Schaible, Clerk
Approved by:
Robert Little, Supervisor

Friends Of The Library Honor Young Readers

The Friends of the Library are extremely pleased to announce the final amount raised in October's Readin' and a-Rockin' marathon totaled \$501.31. Librarian Dorothy Davies has already purchased over fifty books with the proceeds, and almost all of them are being processed at the library now.

The Friends of the Library have decided to give a reception in honor of the "young rockers", their sponsors, and the volunteers who were part of the fund-raising effort. The reception will be held in the Manchester Township Library on Saturday, December 8, 1990, from 2:30 to 3:30 p.m.

During the reception, the young readers will sign bookplates for the new books which are now in the library as a result of their efforts. The bookplates will remain on the book's card pocket to signify it is a special gift.

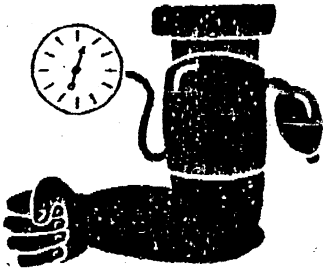
In addition, a special videotape will be shown of the events which took place during the Readin' and

a-Rockin' marathon. The tape will become part of the library's permanent collection available for check out. Copies of the tape will also be available for \$15, part of the proceeds going to the Friends of the Library.

The reception welcomes all Friends of the Library, volunteers and pledge sponsors of the Readin' and a-Rockin' event. Hope to see you there!

Lower the numbers and raise the odds.

Controlling your blood pressure can reduce your risk of heart disease.



American Heart Association

Substance Abuse Treatment and Recovery

"Treatment and Recovery from Chemical Dependence" is the topic of Brighton Hospital's next Community Education program on Tuesday evening, December 4. The program will begin at 7:00

p.m. in the hospital's chapel.

Joseph W. Petty, Ph.D., a member of the hospital's Counseling Services Department, will be the featured speaker. Dr. Petty will discuss the inpatient and outpatient programs for treating alcoholism and other types of drug abuse. He will also cover the role of Alcoholics Anonymous and Al-Anon in recovery.

Brighton Hospital, which has specialized in the substance abuse treatment field since its founding in 1950, serves patients from throughout the southeastern Michigan region.

It hosts the education series on the first Tuesday evening of each month. Reservations are not required for the free program.

The hospital is located on East Grand River in Brighton, just west of Kensington Road.

For additional information about this program, contact Brighton Hospital's Community Relations Department on weekdays between 8:30 a.m. and 4:30 p.m. at 313-227-1211, ext. 276.

Santa Claus Coming To Town

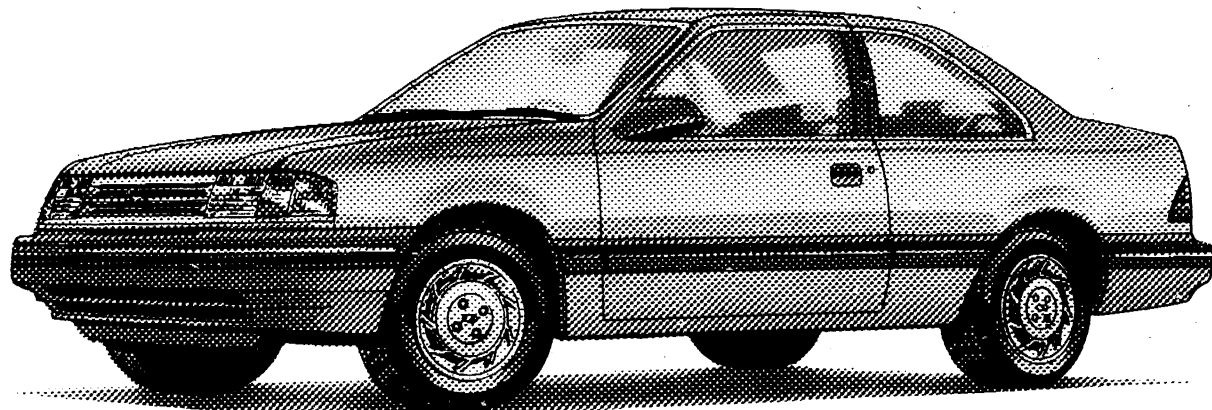
Santa Claus is coming to town, Sunday, December 9, at 1:00. Santa's headquarters will be located at 109 East Main Street (next to the Post office). Santa Claus is visiting communities at different times than in previous years. It seems Thanksgiving weekend was too early for Santa in 1990. The Community Resource Center arranged with Santa to have a temporary mailing address for letters. Just address those letters to: CRC, P.O. Box 433, Manchester, Michigan 48158. Santa's elves will deliver them to the North Pole. Hopefully, if Santa has enough helpers, the letters will be answered.

A GREAT BUY JUST GOT BETTER AT

MIDWEST



510 W. MAIN STREET, MANCHESTER, MICHIGAN



YOUR 1991

FORD TEMPO L 2-DR. SEDAN

YOUR PRICE: \$8,799

THIS IS YOUR EQUIPMENT:

- 2.3-LITER ENGINE W/5-SPEED MANUAL TRANS.
- MULTIPLE-PORT ELECTRONIC FUEL INJECTION
- AM/FM STEREO RADIO
- TINTED GLASS
- AM/FM CASSETTE
- DIGITAL CLOCK IN RADIO
- POWER STEERING
- CLOTH/VINYL LOW BACK BUCKET SEATS
- BODY SIDE MOLDINGS
- DEFROSTER

\$500 Rebate

MANUFACTURER'S SUGGESTED LIST PRICE DELIVERED	\$9,076
DEALER DISCOUNT	\$ 277
YOUR TOTAL PRICE	\$8,799*

*plus state fees



Pork Avenue Excavating

- Drain Fields
- Trenching
- Grade Work
- Driveways

Doug Welshans

3675 S. Fletcher Road
Chelsea, Michigan 48118

(313) 475-9656