

OCT 25 1990

THE MANCHESTER ENTERPRISE

30¢ COPY

124th YEAR VOLUME NUMBER TWO

USPS 327-460

THURSDAY, OCTOBER 25, 1990

Visiting Old Friends

The Manchester Enterprise
November 22, 1906

Account of a Trip up North by a
Manchester Man and his Wife.

Though I am up north, I am thinking of our dear little village at home and will tell you something of what I have seen since I left.

We left there November 5th, stayed in Jackson until the 6th, drove to Lansing, stayed until the 8th, then we left for our long journey and it was long, sure enough.

We reached Billings Sunday, the 10th, after a pleasant trip. But some of the time it was very rough. All through Gratiot county it was hard traveling. We were one day longer on the road than we expected to be. We passed through where the pine had been burned and that was a very lonely road. We stopped two nights with farmers and as good luck would have it, they were all very fine people.

We are at Wm. Kent's. This is a very pretty country and they have everything for comfort. They have a farm of 280 acres, all good working land, and all kinds of buildings, about 40 head of cattle, 90 sheep, 20 hogs, and eight horses. They own a saw mill, a general store, have the post office, telephone office and a hall for general use.

Last week they threshed wheat, buckwheat, rye and oats. They had huskers, hay balers and well diggers all last week. They don't keep a hotel but one would think so by the mealers they serve. Monday they had 12 for dinner and supper, Tuesday 18, Wednesday 28, Thursday 12, Friday 12 and Saturday 12.

We had the pleasure of seeing two big deer. Two hunters got them not far from here. They weighed about 200 pounds each and were the first ones I had seen in a long time.

The ENTERPRISE is the only word we have had from home since we left and it seemed good to get it and thanks to you for sending it.

With best regards to all, I am ever

John B. Jackson

Christmas Tree Sought For Park

The Manchester Village Parks Commission is seeking your help in finding a live tree to be planted in Wurster Park.

They are looking for a 10'-12' blue spruce which will be decorated during upcoming Christmas seasons.

Anyone wishing to donate a blue spruce tree, please call the Village Office at 428-7877.

MFS Honors Clarence Fielder



Clarence Fielder

Clarence Fielder was honored by the Manchester Family Service Board in recognition of his twenty-five years of service on the board, at a dinner at Haarer's Meeting Place on October 2nd.

John Sahakian, board treasurer, presented Clarence with a plaque. Clarence was a charter member of the board. Though retired from the board, he still volunteers his help.

The dinner date, also coincided with the 47th anniversary of Margaret and Clarence and they were presented with an anniversary cake.

Manchester United Way In Full Swing

"SHOW YOUR CARING THROUGH SHARING." The Manchester United Way Campaign is in full swing and will continue through October. This year's goal is \$60,000. These funds go to support many Manchester-based agencies. Some of these organizations are: Manchester Summer Recreation program, Community Resource Center, Interfaith Counseling, Manchester Cooperative Preschool, Manchester Township Library, Manchester Family Service, Manchester Senior Citizens, and the Substance Abuse Awareness Committee. Campaign contributions are coming in from the local businesses and industries, schools and individual residents. Everyone is working hard to achieve this year's campaign goal.

Have you shown your caring through sharing? If not, send your

donation to Manchester United Way, P.O. Box 275, Manchester, Michigan 48158. If you contribute at work, please designate that it comes to the Manchester United Way.

County Turns To Millage Process

With an ever increasing demand for services and decreasing budgets, Washtenaw County Human Services and nonprofit community groups have turned to the millage process to raise additional funds.

The Washtenaw County Board of Commissioners has voted to place a millage request on the November 6 ballot. This millage would create \$1.5 million additional dollars each year for the next five years. Funds will support and expand programs such as job skills development and training, substance abuse treatment and prevention, child and adult abuse prevention, infant mortality reduction, aid to the mentally ill and developmentally disabled, and services to seniors.

For a home assessed at \$100,000 with a \$50,000 SEV, the increased tax would be about \$12 annually and would enable local agencies to address the complex health and social problems and to provide services which offer opportunities to obtain, enhance or maintain independence for Washtenaw County citizens.

Manchester

-vs-

Reading

Saturday
October 27
7:30 p.m.

Jackson High School
Withington Stadium

1990 Cascades Conference Champions



FRONT (l-r): Shawn Cooper, Jeff Smith, Jason Woods, Andy Pagel - Captain, Mike Blumenauer - Captain, Jesse Widmayer - Captain, Duane Hopkins, Jeff Gillow, Isreal Clouse. SECOND (l-r): Jim Ross & John Ross - Managers, Brett Bauder, Robert Sloan, Kevin Friday, Jay Gillow, Patrick Walz, Tim Fenelon, Lance Fielder, Chris Gilbert - Manager. THIRD (l-r): Asst. Coach Jim Krzyzaniak, Mark Schulze, John Ward, Steve Harvey, Mike Riske, Gary Beard, Eric Fillyaw, Rob Gonyer, Jon Uphouse, Asst. Coach Bob Curley. BACK (l-r): Trainer Jim Biskner, Tim Becketl, Tony Panches, James Landini, Brian Leach, Casey Salkauskas, Jeno Okey, Dennis Gehringer, Ted Harris, Coach Wes Gall.

Senior Citizens News

It seems like the mystery of the "birds and the bees" is a little clearer. First the good news: A young man named Kyle Jones is responsible for placing the birdhouses along the highway near Tecumseh as his project for attaining his Eagle Scout award. He is trying to encourage the bluebirds (with the sanction of the state) to come back to Michigan. We will closely watch your efforts, gung ho! Thanks to Karen Jenter, the waitress at the restaurant, and others who helped solve this mystery. Now the bad news: killer bees have crossed the Rio Grande into Texas. Imagine bees chasing you for a quarter mile before giving up! Hope someone can get them under control. One thing for sure, we don't have to control our Jan, she is doing well on her own with her special fish on Thursday, October 25. Exercise at 11:00 will work up an appetite and bingo following will work it off. Don't forget the public card party that is senior sponsored at 8:00 p.m. at Freedom township Hall.

Friday, October 26: Senior bus will leave at 9:00 a.m. for the 10 o'clock tour of the Gerald E. Eddy Geology Center in the Waterloo Recreation Area. Scenic views introduces visitors of all ages to Michigan's rocks, minerals, fossils, crystals, glacial information and stories of mining from prehistoric times to the twentieth century. Call Erma at 428-8707 for this one.

Saturday, October 27: 9:30 is departure time from the Center

for the Falvor Fruit Farm at Jackson. Give Erma a ring to go along.

Tuesday, October 30: Jan will serve her famous meat loaf at 12:00 noon. Call 428-8359 ahead, or Jan at 428-7630 before 10:30 a.m. to reserve your senior lunch on this day or for any of our meals.

Wednesday, October 31: The seniors will leave the Center at 10:30 for Ella Sharp Park. They will be home in time to greet all the small ghosts, goblins and witches who will appear at our doors-Happy Halloween!

Thursday, November 1: Exercise at 11:00, birthday bash dinner of pork chops with dressing, cake and your special candles for all who were born this month of November and are at that magic age of 55 or older. Remember, birthday dinners are half-price at \$1.25 and who can resist a bargain? Call in your reservation and come enjoy the fun. Then go over to the Center and also enjoy bingo to round out the day.

The Trumpeter newsletter has been printed for months of November and December. You may pick up your copy at either the senior meals or at the Center.

BUY IT. SELL IT. FIND IT.
CLASSIFIED.

Letter To The Editor

I'm a small business owner who grew up in Manchester. State Representative Margaret O'Connor was correct in not voting for the polluters pay bill because it will hurt almost everyone. Here's my story.

I want to buy a beauty shop which was a gas station 20 years ago. If the site was contaminated while it was a gas station, the polluters pay bill could force me to pay for cleaning up the problem, even though I had nothing to do with the contamination.

Frankly, since that bill was passed, I'd be a fool to buy it. Thank goodness Margaret O'Connor took time to read the bill and recognize the problems it will create for homeowners, farmers and others.

Tom Steele

DIAL -A- GARDEN

The following is a monthly schedule of Dial-A-Garden, the system of pre-recorded daily gardening tips sponsored by the Washtenaw County Cooperative Extension Service. The system is in operation 24 hours a day, 7 days a week. Interested persons are invited to call 971-1129 at their convenience to listen to timely, up-to-date gardening information.

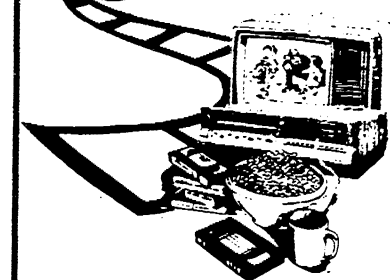
Thursday, October 25: Drying Sunflowers and Other Seeds
Friday, October 26: Winter Protection for Ornamentals
Monday, October 29: Which Woods Burn Best?
Tuesday, October 30: Fertilizing Trees and Shrubs
Wednesday, October 31: Jack O'Lantern

your advertising dollars do better in **the classifieds**

Kirk Excavating

Sand—Gravel—Fill Dirt
Basements—Driveways
428-7938
Dave Kirk
14180 Schleweis Road
Manchester

HO-HO-HOME MOVIES, SLIDES, AND PHOTOS ON VIDEO!

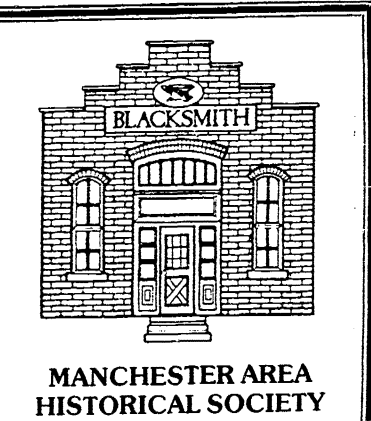


J. HENRY
Video Production Services
Box 264 Manitou Beach, MI 49253
(517) 547-7233

THE MANCHESTER ENTERPRISE

150 East Main Street Phone 313-428-8173 Manchester, MI 48158
USPS No. 327-460

The Manchester Enterprise was established in 1867 and is published each Thursday at 150 East Main St., Manchester, Michigan, with second class postage paid at Manchester, Michigan. Edward E. Steele, Publisher; Lenore A. Steele, Editor.
POSTMASTER: Send Form 3972 To: Manchester Enterprise, 150 East Main St., Manchester, Michigan 48158.
DEADLINES: All Display Advertising and Pictures (Black & White ONLY) Are Due By 5 p.m. Every Monday For Same Week Publication. All Classified Advertising and News Articles Are Due By 10 a.m. Every Tuesday For Same Week Publication.



Manchester Area Historical Society

The Manchester Area Historical Society met on Tuesday, October 16, at the Blacksmith Shop.

The 1991 calendars are out and area available for \$4.

Program chairman, Jan Shurtliff, conducted an interesting and entertaining program on Manchester trivia. Questions ranged from who plotted Manchester (Major John Gilbert), to where was Windom Village (near Iron Lake), to when was the last train track torn up (1965). From the quality of the answers, it was obvious that we need more programs on the historical background of Manchester.

Refreshments were furnished by Ann Pat Wolf.

Shakespeare Reading Club

On October 16, the club met at the home of Jeanette Kirk. Her topic was "The Rag Sellers Dream." This is a true story about her grandmother, Amelia Jan-ecke, a poor girl born in Rumania who had a dream of someday having her own store where she could sell yard goods, etc.

After working hard in Europe, she was able to come to America to live. In 1895, she married a Bohemian, Anthony Urbganal, and she opened her shop in the living room of their home. She made clothes for her daughters, and other mothers bought material from her to make clothes for their families. Later on she had her own store building and did well.

Our next meeting will be held on Tuesday, October 30 at 2:00 p.m. at the home of Charlotte Timmerman. Her topic will be "Oberammergau and the Passion Play." We will meet at the Emanuel Church parking lot at 1:15 p.m. to car pool there. Be sure to come.



A Good Selection of New and Used Cars On Our Lot

We Feature "Riverside Conversion Vans"

TIRB

CHEVROLET & GEO

Phone 313-428-8212 or 313-428-8492
131 ADRIAN STREET MANCHESTER, MICHIGAN

Eye Care

Cheryl Huey, M.D.
Ophthalmologist - Eye Physician and Surgeon



COMMON MISCONCEPTIONS

There are many ideas that people commonly share about their eyes; however, many of them are no longer considered true. You can test your understanding of these ideas, by deciding whether each of these statements is true or false: 1. You can damage your eyes by using a light that is too dim. 2. A cataract is a film that is peeled off during surgery. 3. Glaucoma can only affect the elderly. 4. If you only have use of one eye, and you use it too much, it will wear out faster. 5. Headaches are almost always caused by a problem with the eyes. 6. You can damage your eyes by holding a book too close to your eyes. 7. During a cataract operation, the eyeball is removed and later placed back in position. 8. It is safe to watch a solar eclipse through sunglasses.

All of these statements are false. A helpful hint: Always wear protective eyewear during sport activities and when using power tools.

Cheryl Huey, M.D.

Ann Arbor Eye Care
Liberty Medical Complex
3200 West Liberty
Ann Arbor, MI 48103
(313) **662-2020**

Women, Smoking and Heart Disease

At the turn of the century, cigarette smoking was considered risqué for American women. By the 1950's it was fashionable. But today women are faced with the reality that what was once a "fashion statement" is now killing them.

Nearly 22 million American women still smoke. And the American Heart Association urges those women to consider some alarming facts:

- Smoking is the greatest single preventable cause of death in the United States.
- Heart attack is the No. 1 killer of American women.

The solution: If you smoke, quit.

Studies have shown that women who smoke are two to six times more likely to have a heart attack as non-smoking women. In fact, any smoker who has a heart attack is more likely than a non-smoker to die from it and is two to four times more likely to die suddenly.

In addition, women who both smoke and use oral contraceptives are in greater danger. Recent studies show that women smokers who use oral contraceptives are up to 39 times more likely to have a heart attack and up to 22 times more likely to have a stroke than women who neither smoke nor use birth control pills. More studies are needed to understand the influence of birth control pills

on heart attack and stroke risk. However, it may be because they tend to cause slight to moderate elevations in blood cholesterol and blood pressure.

Studies show that if a woman starts to smoke, she is less likely to quit than a man. However, if she stops smoking, no matter how long or how much she smoked, her risk of heart disease rapidly declines.

In short, the days of "fashionable" smoking are over. To get more information on the dangers of smoking and how to quit, contact your nearest American Heart Association.

School Hot Lunch Menu

Monday, October 29: Cheese and Pepperoni Pizza from Cottage Inn, Toss Salad, Fruit, Milk

Tuesday, October 30: Hamburger Stronganoff on Noodles, Buttered Green Beans, Bread and Butter, Fruit, Milk

Wednesday, October 31: "Happy Halloween", Apple Juice, Chicken Nuggets with Sauce, Curly Q Fries, Carrot/Celery Sticks, Doughnut, Milk

Thursday, November 1: Klager No Lunch, Cheese/Sausage Pizza, Tossed Salad with Dressing, Fresh Fruit, Cookie, Milk

Friday, November 2: No School

Successful Fall Bloodmobile

The recent bloodbank clinic held at Emanuel Church of Christ was a great day as the Red Cross supply of blood has increased by 114 pints. The clinic ran very smoothly thanks to the chairperson of the day, Mrs. Marlene Vassoff. Her staff included pre-screener Mrs. Ida Schaffer; registrars, Mrs. Mary Boutell and Mrs. Mae Sellers; pack table Mrs. Joyce Golightly and Mrs. June Jenter; escorts Mrs. Edna Defenderfer and Mr. George Vassoff; observer Mrs. Dorothy Mann, RN; gallon donor books, Mrs. Ruth Oates; canteen chairperson was Mrs. Betty Budnik; lunch committee was Max and Arlene Walter, and Mrs. Norma Stautz.

Everyone enjoyed the cider and apples that were donated by Alber Cider Mill. Thanks, Al and Ann.

Due to loss of historical records, we missed honoring our person who had donated the 10,000th pint of blood from the Manchester area. However, by checking records from the Red Cross and our own files, we found Mrs. Marcia Bunney was that donor and she was honored with a plaque from the Red Cross and a bouquet of flowers donated by the Flower Garden. Thanks, Denine and J.T.

congratulations, Marcia. Mr. Gary Brokaw earned his 6 gallon pin, while Mr. John Bihlmeyer, Mr. David Ahrens and Mr. Chris Spork earned their 5 gallon pins; Mr. Larry Heisler and Ms. Sheila Craig earned their 4 gallon pins; and Ms. Hilda Arnold earned her 2 gallon pin. We also had 3 new donors: Mr. Greg Lee, Ms. Dawn Schaffer, and Ms. Sybil Kolon.

The coordinators of the Manchester Bloodmobiles would like to thank all the church and industry recruiters and all the people at Emanuel Church for making the fall clinic a success.

Birth Announcement

DANYEL JOY

Russ and Kim Hough are the proud parents of a baby girl, Danyel Joy, born October 8, 1990. Danyel weighed 7 lbs. 9 ozs. and was 21 inches long.

Maternal grandparents are Joe and Carol Natter of Brooklyn. Paternal grandparents are Merriek and Doris Hough of Manchester. Danyel has a brother, J.T.

As an emerging leader, Carl Pursell shares the vision of one of his party's greatest leaders:

You cannot bring about prosperity by discouraging thrift.

You cannot further the brotherhood of man, by encouraging class hatred.

You cannot help the poor, by destroying the rich.

You cannot keep out of trouble, by spending more than you earn.

You cannot build character and courage by taking away man's initiative and independence.

You cannot help men permanently by doing for them what they could and should do for themselves.

- ABRAHAM LINCOLN

CONGRESSMAN CARL PURSELL



Paid for by the PURSELL-CONGRESS COMMITTEE
PO Box 7778 Ann Arbor, MI 48107

DAYLIGHT SAVINGS TIME ENDS OCTOBER 28, 1990
Get an extra hour to sleep.

55 or older?

We've just reduced the cost of homeowners insurance 30%!

Here's why! Our statistics show that homeowners 55 and older have fewer and less costly losses than other age groups.
So it's only fair to charge you less for your homeowners insurance.



Auto-Owners Insurance
The Home Car Business

The No Problem People



Sutton Agency, Inc.

AGENTS:
CONNIE WIDMAYER KATHRYN MARTIN SUSAN MANN

Phone 313-428-9737
136 East Main Street Manchester, Michigan
Monday-Tuesday-Wednesday-Friday 9 am to 4:30 pm
Thursday 9 am to 12 noon

BACK DOOR PARTY STORE
500 Ann Arbor Street Phone 313-428-9287 Manchester, Michigan

BEER WINE KEG BEER
GROCERIES

MICHIGAN LOTTO
Instant and Daily Lottery Tickets

UNION 76 GAS Full Service and Self Serve

WEATHER OR NOT... STEER CLEAR WITH FALL/WINTER CAR CARE

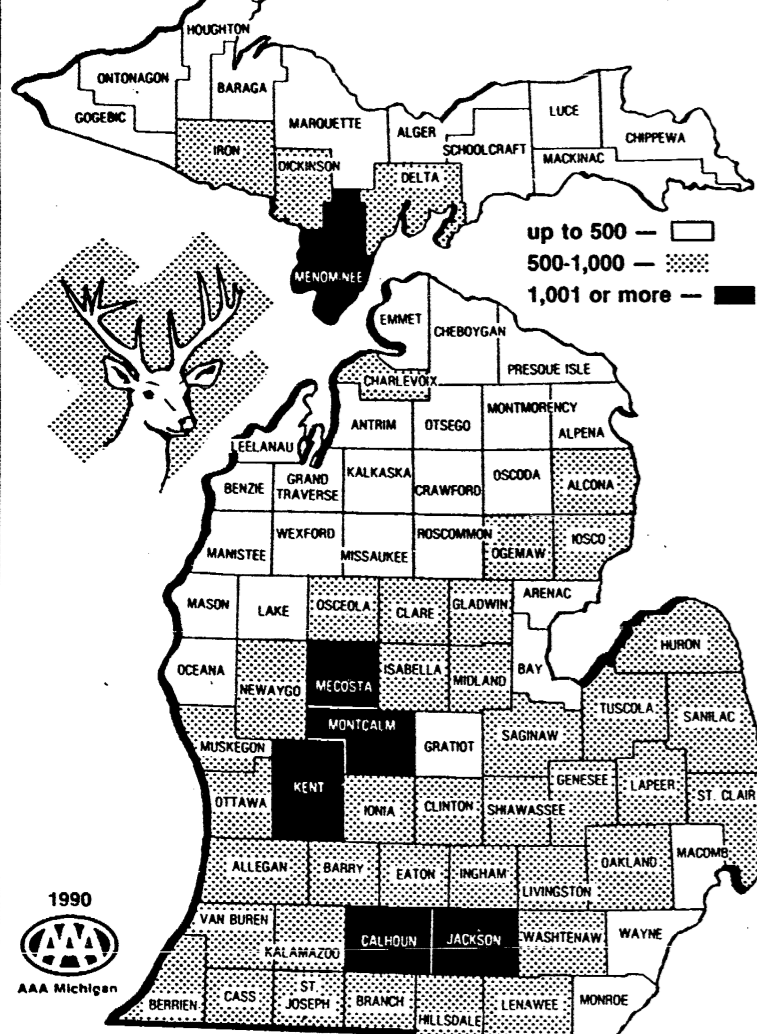
SPECIALIZING IN
Tune-Ups
Front End Alignment
Brakes
Shocks
Fuel Injection
Cleaning
Air Conditioning Service
Exhaust Systems
Tire & Wheel
Balancing
Car Wash

Call For Appointment
Free Pickup & Delivery, 4 mile area radius

24 Hour Wrecker Service

BENEDICT'S MARATHON SERVICE
327 West Main St. Manchester, Mich.
428-8576

MICHIGAN DEER-VEHICLE ACCIDENTS BY COUNTY



Last year, 46,784 deer-vehicle accidents were reported on Michigan roads, 9 percent more than 1988. Kent County recorded the most deer-vehicle collisions with 1,541 while Keweenaw County reported the fewest, 11.

Washtenaw County ranked ninth out of 83 Michigan counties in the number of deer-vehicle accidents last year with 897, AAA Michigan reports.

"Last year, 46,784 deer-vehicle accidents were reported across the state," said Robert V. Cullen, AAA Michigan Community Safety Services manager. "That's up 9 percent over 1988 and 120 percent since 1981. These collisions now represent 11 percent of all accidents in Michigan."

Six people died and more than 1,800 were injured in 1989 deer-vehicle accidents. The average repair bill exceeds \$1,200 for a car damaged after colliding with a deer.

Increasing traffic volumes and herd growth are two factors responsible for the jump in accidents, Cullen said. Since 1981, miles driven in Michigan rose nearly 30 percent while the deer herd grew 54 percent.

About half of the accidents occur in fall during deer breeding season and most happen at night. The majority of drivers report they did not see the deer or spotted the animal too late to respond.

"Most people are killed or seriously injured when the driver swerves to miss the deer, loses control of the vehicle and strikes another object or rolls over," Cullen said.

The estimated 700,000 hunters heading out November 15-30 should be especially careful while

driving since they are three times more likely to be injured traveling to sites than while hunting.

To avoid deer collisions, AAA Michigan recommends:

- Be extra alert in "Deer Crossing" areas, but remember deer may cross highways anywhere. Most accidents happen on paved local roads with fewer reported on interstates or unpaved roads.
- Watch at night for shining eyes. Many accidents occur within two hours after sunset.
- Motionless deer on the side of the road can be "frozen" by activating the vehicle's high beams.

- Ease to a slow pace when a deer is spotted. Assume more deer are near if one appears. Don't panic or try to dodge a moving deer.
- Report all accidents to the local police, Department of Natural Resources or the sheriff's office along with your insurance company. A permit may be obtained to keep the deer.
- Always wear a safety belt.

Buy, Rent, Sell Thru The Classifieds

Lower the numbers and raise the odds.

Controlling your blood pressure can reduce your risk of heart disease.



American Heart Association

Gun Show

Saline Fair Grounds
5055 Ann Arbor-Saline Rd.
between Michigan & I-94

October 27 and 28
Saturday 9 to 5
Sunday 9 to 4

Sponsored by Huron Gun Collectors Association

For more information call 313-522-6610

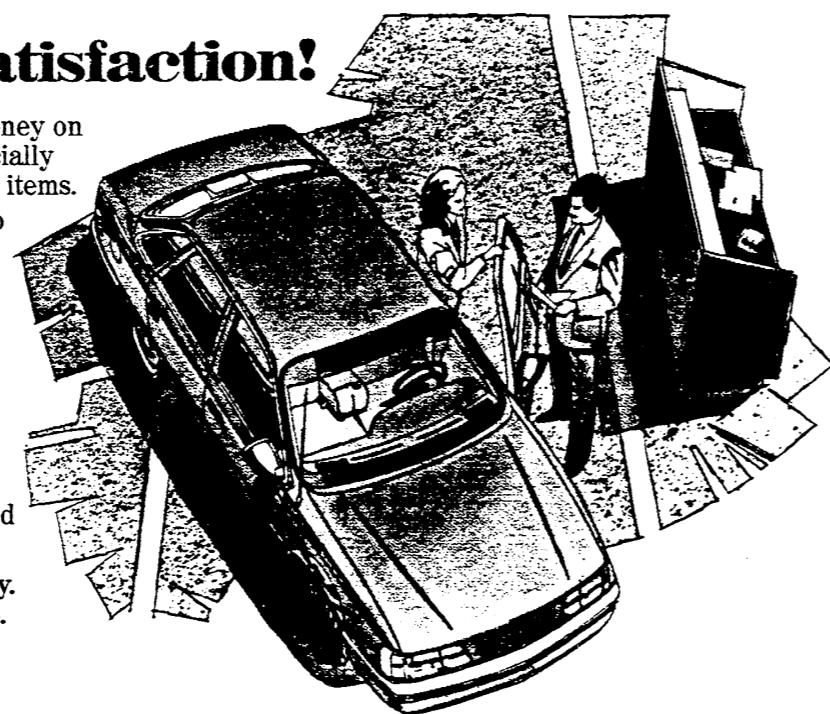
Driving for your satisfaction!

Use the coupons shown below and save money on your vehicle's maintenance needs. We've specially priced some of our most popular maintenance items.

To go along with the special prices, we also offer you the following:

- Factory-trained technicians—skilled in servicing Ford-built vehicles
- A service department equipped with sophisticated diagnostic equipment, for quick and accurate service
- Tools specially designed to service your vehicle's high-tech engine and components
- Genuine Ford and Motorcraft parts, designed for lasting performance

Prices on non Ford-built vehicles may vary. Please present coupon at time of write-up.



Licensed & Insured Contractor
24 Hr. Emergency Service



Stein Electric Co., Inc.
AG. • COMMERCIAL • INDUSTRIAL
INSTITUTIONAL • RESIDENTIAL
MOTOR CONTROLS & LIGHTING

RICK GRAUSTEIN
MANCHESTER, MI 48158
(313) 428-9050

FUND RAISING

Manchester Sportsman Club
8501 Grossman Road
Friday 6:45 p.m.

Manchester American Legion
203 South Adrian Street
Saturday 7:00 p.m.

MOTORCRAFT OIL and OIL FILTER SPECIAL
Includes up to 5 quarts of Motorcraft Oil, Motorcraft Oil Filter and installation. Probes and Diesel-equipped vehicles higher.

Repair Order No. _____
TOTAL SPECIAL PRICE—PARTS and LABOR
\$18.95

ANY APPLICABLE TAXES EXTRA. VALID SEPTEMBER-OCTOBER, 1990

1-48431



MIDWEST FORD, INC.
510 WEST MAIN STREET PHONE 428-8343
MANCHESTER, MICHIGAN 48158



MOTORCRAFT ENGINE TUNE-UP SPECIAL

Solid state tune-up includes installation of Motorcraft Spark Plugs; inspection of choke, throttle linkage, spark plug wires and distributor cap; adjustment of idle and timing. Aerostars, Econolines, 3.8 litre sizes and Platinum Plugs higher. Dual ignition vehicles not included.

TOTAL SPECIAL PRICE—PARTS and LABOR
4 Cylinder **\$37.80** 6 Cylinder **\$42.60** 8 Cylinder **\$47.80**

ANY APPLICABLE TAXES EXTRA. VALID SEPTEMBER-OCTOBER, 1990

CHURCH DIRECTORY



EMANUEL UNITED CHURCH OF CHRIST — Rev. Paul Kuntzman, Senior Pastor, Rev. Nancy Doty, Associate Pastor; Sunday School 9:00 a.m.; Worship 10:15 a.m.; Coffee Hour & Fellowship 11:15 a.m.

MANCHESTER UNITED METHODIST CHURCH — Rev. Pegg Ainslie, Pastor; Sunday School 9:30 a.m., Worship 10:30 a.m. Office hours: Tue., Wed., Thurs. 8-11 a.m.

ST. MARY'S CATHOLIC CHURCH — Rev. Francis J. Murray, Pastor; Masses: Monday thru Wednesday, Friday 8:30 a.m., Thursday 7:00 p.m., Saturday 5:00 p.m., Sunday 8:30 a.m. and 10:30 a.m.

FAITH COMMUNITY CHURCH — Scott Engelman, Pastor; 8400 Sharon Hollow Rd. off W. Austin; Worship Service 10:00 a.m.; Sunday School 11:15 a.m.; Sunday Evening Service 6:00 p.m.; Jr. and Sr. High Young People's Meeting 7:30 p.m.

VICTORY BAPTIST CHURCH — Rev. R. Dean Cooper, Pastor; 423 South Macomb, 428-7506; Sunday School 10:00 a.m.; Morning Worship 11:00 a.m.; Evening Public Bible Class 6:00 p.m.; Wednesday Praise & Prayer 7:00 p.m.

BETHEL UNITED CHURCH OF CHRIST — Rev. Roman A. Reineck, Pastor; Schneider and Bethel Church Roads; Church Service 9:30 a.m.; Sunday School 10:45 a.m.

SHARON UNITED METHODIST CHURCH — Rev. Erik Aisgaard, Pastor; Corner of M-52 and Pleasant Lake Roads; Church School 10:00 a.m.; Worship 11:00 a.m.; Bible Study 5:00 p.m.

ST. JOHN'S LUTHERAN CHURCH — Rev. Dennis A. Falk, Pastor; Austin Road, Bridgewater; Sunday School 9:15 a.m.; Worship 10:30.

NORTH SHARON BAPTIST CHURCH — Bill Winiger, Pastor; Clifford W. J. Whitenburg, Assistant Pastor; Sylvan and Washburn Roads; Sunday School 10:00 a.m.; Morning Church 11:00 a.m.; Evening Church 7:00 p.m.; Wednesday Bible Study 7:00 p.m.; Youth Meetings 7:00 p.m.

IRON CREEK COMMUNITY CHURCH — Tom Butterfield, Pastor; English and Sharon Hollow Roads; Sunday School 10:00 a.m.; Morning Church 11:00 a.m.; Sunday Evening 7:00 p.m.

ZION LUTHERAN CHURCH — Rev. Mark A. Weirauch; 3050 S. Fletcher Road; Sunday School 9:00 a.m.; Worship Service with Holy Communion 10:15 a.m.

ST. THOMAS LUTHERAN CHURCH — Rev. John Riske, Pastor; 10001 W. Ellsworth Rd., (5 miles North and 6 1/2 East of Manchester); Sunday School 9:30 a.m., Worship 10:45 a.m.

ST. JOHN'S UNITED CHURCH OF CHRIST — Rev. Ted Wimmier, Pastor; Rogers Corners, Waters and Fletcher Roads; Adult Bible Study Class 10:00; Worship and Sunday School 10:30 a.m.

CLINTON ASSEMBLY OF GOD — Rev. Richard Coury, Pastor; Chris Bouldrey, Youth Pastor; 13300 Clinton-Manchester Road, Clinton; Sunday School 9:30 a.m.; Worship 10:45 a.m.; Sunday Evening 6:30 p.m.; Wednesday Prayer, Bible Study, Youth 7:00 p.m.

CHURCH OF JESUS CHRIST OF LATTER DAY SAINTS (MORMONS) — Samuel M. Skidmore, Branch President; 1330 Freer Road, Chelsea; Sacrament 9:30 a.m.; Sunday School, Primary 10:40 a.m.; Priesthood, Relief Society, Aaronic Priesthood, Youth 11:40 a.m. For more information call 517-456-7876.

EMANUEL UNITED CHURCH OF CHRIST

Thursday, October 25: 12 Noon Senior Meal, 3:20 Cherub Choir, 3:40 Children's Choir, 4:30 Weight Watchers

Saturday, October 27: 4:30 Senior Youth (grades 7-12) meet at Wm. Alber's for hot dog roast & trip to haunted house. Turn clocks back 1 hour before going to bed

Sunday, October 28: 9am Sunday School, 10:15 Worship, 11:15 Coffee & Fellowship, 4pm Reformation Choir Festival at St. Andrew's UCC, Dexter
Monday, October 29: 7 p.m. Brownies
Tuesday, October 30: 12 Noon Senior Meal, 7pm Scouts

Wednesday, October 31: 6pm Bell Choir, 7:30pm Adult Choir, 8pm AA, AlAnon

ZION LUTHERAN CHURCH

Sunday, October 28: 9am Sunday School, 10:15 Worship
Tuesday, October 30: 6:30 Joymakers, 7:15 Sr. Choir

SHARON UNITED METHODIST CHURCH

Sunday, October 28: 4-6pm Halloween Party for children of all ages

Wednesday, October 31: Bible Study 7pm, Chancel Choir practice 8:15pm

ST. JOHN'S

Thursday, October 25: 5-8pm SAUERKRAUT SUPPER

Sunday, October 28: Confirmation Sunday, Sunday School 9:15am, Worship, 10:30, Youth Group 7pm
Tuesday, October 30: Bell Choir 7pm

Wednesday, October 31: Jr Choir 7pm, Sr Choir 8:30

MARGIE'S UPHOLSTERY

6245 Brooklyn Road
Jackson
Wide Selection Of Fabrics
Pick-Up/Delivery Available
517-536-4230

Witrow Building Company

All Types Home Improvement
Quality Materials & Workmanship

Remodeling	Roofing
Additions	Decks
Kitchens	Bathrooms
Doors	Windows
Cabinets	Siding
Spas	Sunrooms

Call 313-428-7797

MANCHESTER UNITED METHODIST CHURCH

Wednesday, October 24: 2pm Study group, 3pm Girl Scouts, 5:30pm Girl Scouts, 7:30 Koinonia group

Thursday, October 25: 3pm Nominating Committee
Friday, October 26: 10am Bible Study

Sunday, October 28: 9:30am Sunday School, 10:30 Worship
Monday, October 29: 6pm Girl Scouts

Wednesday, October 31: 2pm Study group, 7:30 Koinonia group

BETHEL UNITED CHURCH OF CHRIST

Thursday, October 25: 6:15 Children's Choir, 7:15 Youth Choir Plus

Saturday, October 27: 9am Confirmation Class, 8pm In-betweeners Party at Reads

Sunday, October 28: Reformation Sunday, 9:30 Worship Service-reception of new members, 10:45 Fellowship Coffee Hour sponsored by In-betweeners, 4pm Choir Festival at St. Andrew's, Dexter. Adults return to Bethel for supper and meeting

Wednesday, October 31: Reformation Day

FAITH COMMUNITY CHURCH

Saturday, October 27: Noon to 2:00pm Tailgate Party at Pastor Ostrander's for AWANA Club Achievers (4 sections for Gate Test) Cost \$1.50. Meet at the Church at 11:45am

Sunday, October 28: 10 Morning Worship Service, nursery

available, 11:20 Sunday School for all ages, 5pm Choir Practice, 6pm Evening Fellowship Service, 7:15 Lifeline (grades 9-12)

Monday, October 29: 6pm Tecumseh Convalescent Ministry Tuesday, October 30: 6:30pm AWANA Costume Roller Skating Party at Jackson until 8:30, please bring \$3

Wednesday, October 31: Halloween-No AWANA, 7pm Prayer Hour & Bible Study

World Community Day

In Manchester, World Community Day services will be held at St. Mary's Church on Friday, November 2, 1990 at 1:30 p.m.

World Community Day is an ecumenical worship event, sponsored annually by Church Women United, that brings Protestant, Roman Catholic, Orthodox and other Christian women together to focus on issues of the wider global community and a mutual search for justice and peace in the world.

"Women for Justice/Justice for Women" is the theme for 1990's observance that raises consciousness to the condition of women of all races and cultures who are oppressed. It lifts up for support and prayer the groups and individual women who are working for justice.

The service and resource materials for this World Community Day event were written by a diverse group of Christian women from Arizona.

Are your gutters and downspouts ready to be replaced?

Free estimates
Seamless aluminum guttering—7 colors available

R.D. Kleinschmidt, Inc.

19860 Sharon Valley Road
Manchester • 428-8836

Pennington LP Gas Means Dependability and Service.

In this world, where there aren't a lot of things you can depend on, isn't it nice to be able to depend on a company like Pennington LP Gas for all of your propane needs? Because at Pennington LP Gas you will be assured of excellent LP gas service with emphasis on quality and honesty.

Pennington LP GAS
Count on us to keep the heat on!

9155 W. Weston Rd. P.O. Box 37 Morenci, MI 49256 (517) 458-7107 Toll Free (800) 365-5599	13400 M-52 P.O. Box 490 Stockbridge, MI 49285 (517) 851-7577 Toll Free (800) 274-5599
---	--

WE MAKE HOUSE CALLS

FALL FURNACE SPECIALS

Gas Furnace Cleaning **\$4995** All Makes All Models

Oil Furnace Cleaning Also Available. Call For Price Quote.

AMERICAN HEATING & COOLING CONTRACTING CORP.
4540 Saline Rd., Ann Arbor
665-0623

Rheem is a registered trademark of the Rheem Manufacturing Company.

Strikes N Spares

Jolly Keglers		HIGH SERIES	
Dutch Country Kitchens	32 17	Marilyn Russell	547
Manchester Automotive	27 22	Ella Brown	526
Robertson-Morrison	27 22	Kit Mosko	522
Manchester Car Wash	26 23	HIGH GAME	
Bollinger Sanitation	23 1/2 25 1/2	Kathy Hyatt	215
Carol's Cut-N-Curl	21 28	Terri Pilczynski	208
Grass Lake Automotive	21 28	Kathleen Matthews	206
Manchester Tool & Die	18 1/2 30 1/2		
Manchester Town Club			
S. Merriman	198	Cooks	38 11
J. Merriman	191	Waynes Windshield Repair	31 18
M. Warner	189	Thompson Pizza	30 19
INDIVIDUAL SERIES			
S. Merriman	493	Tidy Tom's	29 20
M. Maistre	490	Gemini	24 25
B. Coltre	482	Klinks Excavating	23 26
HIGH TEAM GAME W/HDCP			
Carol's Cut-N-Curl	954	Steve Walz Construction	18 31
Bollinger Sanitation	905	P.M.S.	18 31
Manchester Tool & Die	870	Wampler Construction	18 31
HIGH TEAM SERIES W/HDCP			
Carol's Cut-N-Curl	2692	Donna Dault	221-200
Bollinger Sanitation	2539	Liz Mann	204
Dutch Country Kitchens	2420	Alisa Ross	213
200 GAMES OF THE WEEK		500's	
S. Graham	217	Donna Dault	578
400 SERIES OF THE WEEK		Sue Klink	502
S. Graham	530	Liz Mann	503
Manchester Women			
Emerson & Wesch-3	144.5 65.5	HIGH INDIVIDUAL GAME	
Bill's IGA-8	127.5 82.5	Pat Hanselman	234
Three Lakes Supply-9	116.0 94.0	Terri Scherdt	226
Floral Fantasy-2	113.0 97.0	Donna Dault	221
Weatherwax Drugs-5	112.5 97.5	HIGH INDIVIDUAL SERIES	
McMaster Ford-1	106.0 104.0	Donna Dault	572
Gentner Trucking-4	92.5 117.5	Pat Hanselman	553
Mann Realtors-10	92.5 117.5	Terri Scherdt	533
Haarer's Mtg Place-6	79.0 131.0	HIGH TEAM GAME ACTUAL	
Brooklyn Products-7	66.5 143.5	Steve Walz Construction	799
		HIGH TEAM SERIES ACTUAL	
		Cooks	2214
		HIGH TEAM GAME HDCP	
		Steve Walz Construction	781
		HIGH TEAM SERIES HDCP	
		Cooks	2238

DAN'S WESTSIDE AUTOMOTIVE

660 West Main Street Phone 428-9455 Manchester, Michigan

WHEN THE SNOW FLIES WILL YOUR CAR BE WINTERIZED?

Inspections of the Cooling System are Crucial to the Engines Health

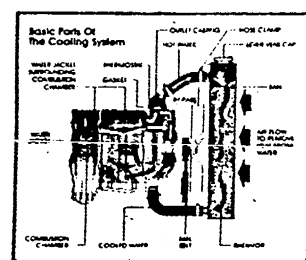
How To Prevent Car Heart Attacks.

FOR ONLY
\$34.95

COMPLETE INSPECTION
INCLUDES:

1. Flush Cooling System
2. Check Operation of Thermostat.
3. Test Battery and Charging System.
4. Clean Battery Cables.
5. Inspect Radiator Cap, Belts and Hoses.
6. Fill System With Up to 2 Gallons of New Antifreeze.

Unfortunately, most car owners don't realize that cooling system parts should be replaced *before* they fail. Like heart attacks in people, car heart attacks can often be prevented with regular inspections of the cooling system.



Today's cars operate at higher engine speeds with more equipment under the hood, smaller engine compartments, and reduced radiator size. So the cooling system — particularly the thermostat, which constantly opens and closes to regulate coolant flow — is under a lot of stress. In fact, the cooling system removes twice as much engine heat as the exhaust system.

Check The Low Price For Your Car

Exhaust Systems

For Escort \$95.12
Chevy Celebrity \$82.64

WE CUSTOM BEND DUAL EXHAUST FOR YOUR CAR OR TRUCK

Front End Alignment

Most Cars and Light Trucks **\$24.95**

Cornet Ultra-Trac On Sale NOW!!

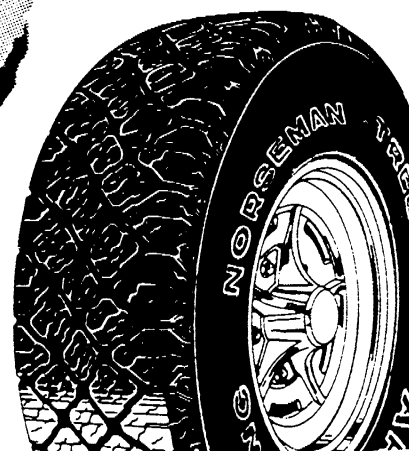


Built Better.... Cost Less



CORONET ULTRA-TRAC

- All-season criss-cross tread design
- Twin steel belts give superior performance
- "A" traction grade, M & S rated, 40,000-mile treadwear warranty, road hazard coverage
- 19 sizes to choose from including 70 Series



NORSEMAN TREDLOC AIS

- Block style criss-cross tread ideal for on/off-road driving
- Tredloc® betting system for superior durability
- All-season, all-weather and all-position use
- 40,000-mile treadwear warranty

Trick-or-Treaters Safety Tips

- Trick-or-treat while it is still light outside.
- Wear bright costumes with reflective paint or tape and short enough to prevent tripping.
- Wear face make-up instead of a mask.
- Only visit homes with porch lights on. Never enter a stranger's home.
- Carry a flashlight to light the way and to alert motorists.
- Cross streets at corners and look all ways before stepping off a curb. Do not cross between parked cars or in the middle of the block.
- If there is no sidewalk, walk facing traffic, well off the road.
- Adults should chaperone young children on their Halloween rounds and inspect candy before it is eaten.

HAVE A SAFE AND HAPPY HALLOWEEN!

Thousands of tiny "ghosts and goblins" are gearing up to beg door-to-door for treats in Michigan this Halloween. A little education can make it a safe and enjoyable experience, AAA Michigan reports.

"Halloween is a magical holiday for children, but it can also present some serious dangers,"



HALLOWEEN PARTY

Where: At the old athletic field
When: 7:00 p.m. after Trick or Treat
Date: October 31, 1990
Who: Preschool - 6th grade
What: Costume Contest

Free cider, donuts and prizes for children only

Sponsored by the Manchester High School Key Club, Kiwanis, and the Manchester Recreation Task Force.

Manchester Co-Operative Preschool



Fireman Glenn Ginski reassures the children that he's their friend even with his suit on.



The Manchester Co-Op preschoolers look at the "Big Dutch Boy" during Fire Prevention Week.

Columbia Cabinetry

205 Irwin Street
Brooklyn, Michigan

Custom Cabinets
Kitchen Re-facing

Call anytime for appointment
517-592-2292 517-536-4425
Chris Parr

7th & 8th Graders Halloween Dance

Saturday, October 27, 1990
7:30 p.m. - 10:30 p.m.
Middle School Gym
Jonathan Walz, D.J.

Admission: \$2.50 in costume
\$3.00 not in costume
Refreshments will be sold
Manchester Recreation Task Force
For information call 428-7722



MARGARET O'CONNOR'S OPPONENT POSES AS

A "CONSERVATIVE INDEPENDENT"

YET HE HAS ACCEPTED 90% OF HIS CAMPAIGN CONTRIBUTIONS

FROM LIBERAL SPECIAL INTEREST GROUPS

OUTSIDE HIS DISTRICT.

"A WOLF IN CHIEF'S CLOTHING?"



VOTE FOR THE REAL THING!
VOTE FOR MARGARET
REPUBLICAN
O'CONNOR

Margaret O'Connor
4300 Ann Arbor-Saline Road
Ann Arbor, MI

• New Homes • Garages
• Additions • Roofing
• Siding • Decks

DANIEL R. WAMPLER
517-456-4305

Pay off your mortgage and send your kids to college... with UNIVERSAL LIFE

You can reach your most important goals with a Universal Life policy from Farm Bureau Life Insurance Company of Michigan. Besides low-cost life insurance protection, Universal Life helps build a substantial cash value fund that you can use to buy a house, pay off a mortgage, or educate your kids. Find out more about the one policy that can meet the needs of your life.

Making your future more predictable

FARM BUREAU INSURANCE

LARRY BECKTEL
135 E. Main St., Suite 204
Manchester, MI 48158
Phone 313-428-7331

DEER PROCESSING

Cutting, Wrapping
Venison, Salami
your Deer
Refrigeration Available

WAYNE BUCKNER
10886 Lawrence-Brooklyn
517-592-2579

OTHER CUSTOM MEAT CUTTING AVAILABLE

MANCHESTER SHARON HOLLOW - WATKINS HORNING
AUSTIN RD. TROLZ FARM
BUCKNER'S ON RIGHT

State Inspected Facilities

CLIP AND SAVE

313-429-4885 COUPON 517-423-2148

Saline in the Saline Shopping Center

1ST OPTOMETRY eye care centers

\$99 Daily Wear Soft Contact Lenses

Tecumseh 128 W. Chicago Blvd.

\$10 OFF (with coupon)

Dr. Thomas Cunningham

DOES NOT APPLY TO OTHER DISCOUNT OFFERS OR PRIOR ORDERS

Prescription Eyeglasses

KRAUSS PHARMACY AND LAUREL HOME HEALTH CARE

CARRYING A FULL LINE OF HOME HEALTH CARE EQUIPMENT

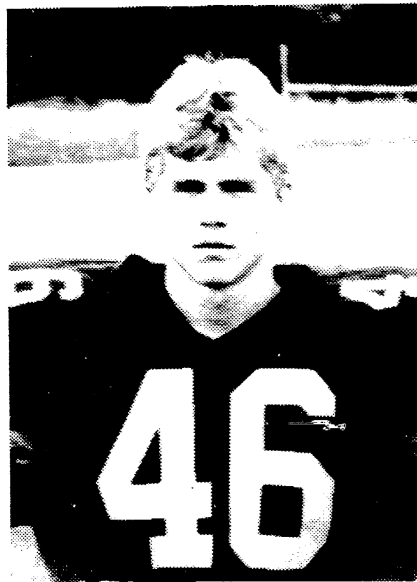
HOSPITAL EQUIPMENT
*Beds *Oxygen *Walkers *Bedside commodes
*Ostomy *Canes *Nebulizers

ORTHOTICS
*Wrist splints *Knee braces *Traction
*TENS units *Cervical collars
*Back cushions *Cervical pillows

DIAGNOSTICS
*Blood glucose meters *Stethoscopes
*Digital blood pressure monitors
*Manual blood pressure kits

Players Of The Week

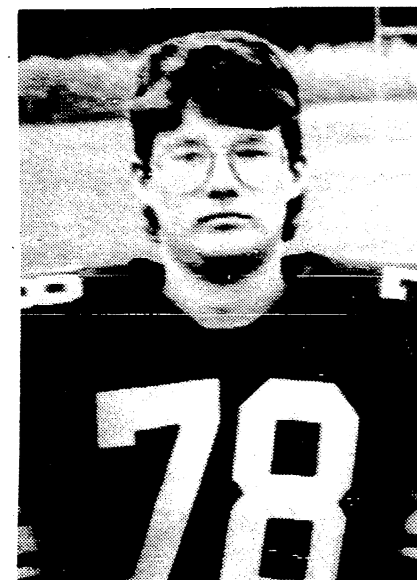
Photos by Jon



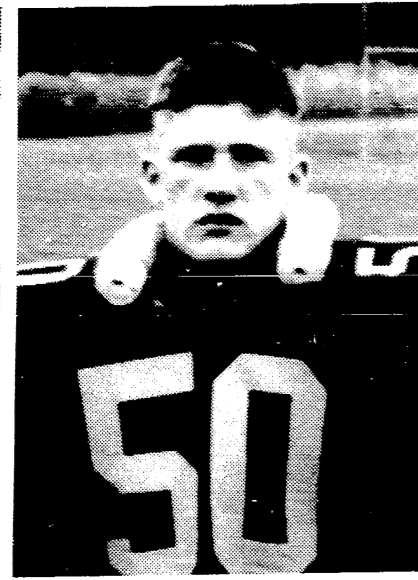
Offense
Andy Pagel



Defense
Lance Fielder



Scout
Mark Schulze



Special
Robert Sloan

JV's Win 7th, Beat Hanover-Horton 28-6

Playing on a cold and rainy, windy night, the JV Dutch overcame offensive turnovers to dominate Hanover-Horton, winning their final game of the season by a score of 28-6. By winning, the JV Dutch finished their season with a very fine 7-1 record.

The Dutch opened the scoring in the 1st quarter as QB Mike Barnard kept the ball on the option and ran into the endzone from 4 yards out. The conversion attempt failed and the Dutch led 6-0.

The Dutch defense, aggressive and dominant all season, contributed a safety in the early stages of the 2nd quarter, as a swarm of Dutch defenders tackled a Hanover-Horton ball carrier in the endzone. This gave the Dutch a lead of 8-0.

The Dutch offense scored again in the 2nd quarter as Rich Lutton powered in from 1 yard out following the blocking of Kerrick Renfro and Brad Davis. Jeremy Strook kicked the conversion and the Dutch led 15-0. This score stood as the first half ended.

After the Dutch defense forced a Hanover-Horton punt early in the 3rd quarter, the Dutch offense began moving the ball impressively downfield. Brad Davis picked up large chunks of yardage running the ball after receiving the option pitch from QB Barnard. Also, a key 19-yard pass from Barnard to Matt Fielder moved the ball close to the goal line where Rich Lutton ran into the endzone from 2 yards out. Jeremy Strook kicked the extra point and the Dutch led 22-0.

The offense scored once more in the 3rd quarter as Lutton scored his third TD of the game, this one from 10 yards out. The conversion failed and the Dutch led 28-0.

Hanover-Horton scored midway

into the 4th quarter to ruin the Dutch's shutout.

Running the ball well in the 4th quarter for the Dutch were Andy Corwin and Mark Mann, normally offensive linemen. There was no more scoring and the final score read Manchester 28, Hanover-Horton 6.

Offensive heroes for the Dutch include: Lutton - 15 carries, 62 yards; Davis-20 carries, 92 yards; Barnard-7 carries, 19 yards; Corwin-6 carries, 30 yards; Mann 2 carries, 13 yards; and Bryan Hoelt-2 carries, 13 yards. Matt Fielder and Jeff Wiedmayer each had a pass reception for the Dutch.

Defensively, the Dutch were led by Corwin and Stacey Clouse, who each had a part in 13 tackles. Also playing well were Rod Burkhardt, Todd Meeks, Daren Hagan, Matt Fielder, Mike Beard, and Matt Wiethoff.

The win caps off a fine season which saw the Dutch shut out 5 opponents and average 31 points a game offensively. It was a season to be proud of.

The second consecutive Cascades Conference Blue Division title was won by the Manchester Flying Dutchmen Friday night with a win over Hanover-Horton 34-0.

Fullback Andy Pagel returned after missing five games with a knee injury and led the team in rushing with 70 yards on 13 rushes, scoring two touchdowns.

Senior tailback Jesse Wiedmayer also had two touchdowns and sophomore Jamie Sloat completed the game's scoring with a touchdown in the fourth quarter.

This Saturday, Manchester takes on the winner of the Cascades Region 8 Conference. A Class C Region IV playoff berth will be at stake.



The two great Renaissance artists Michelangelo and Leonardo da Vinci were both left-handed.

Congratulations Manchester Dutchmen on being repeat Cascade Champs for 1989 and 1990.

Jon Hardenberg

Golf Team Completes Season



Golf Seniors
Jeremy Harris, Chip Bunn, Chris Wiethoff, Dawn Schaffer

Manchester High School's golf team completed their season this past week by finishing fourth in the conference meet at Hickory Hills Golf Course in Jackson. The varsity team is made up of co-captains Chip Bunn and Chris Wiethoff, plus Dawn Schaffer, Jeremy Harris, Dave Black, Jeff Hughes, and Steve Raab.

The season began with two early tournaments. At Jonesville the team shot 411 and finished sixth out of eight teams on the very difficult Mill Race Golf Course. A few days later in the

Blissfield Two-Man Best Ball Tournament Manchester shot 252, finishing fifth out of twelve teams. The highlight of the tournament was the team of Chip Bunn and Jeff Hughes who combined for an excellent round of 75 and earned a second place medal out of the 36 teams that competed.

Once the regular season began, the results were mixed. Outside the league the team had a 4-4 record with the low score of 166 occurring in a win against Onsted near the end of the season. However, in the highly com-

petitive Blue Division of the Cascades Conference, Manchester finished 0-6. Low scores for the year were turned in by Chris Wiethoff at Sand Creek and Chip Bunn at home against Onsted with scores of 39.

The JV golf team was made up of Matt Blossom, Benji Lowery, Jared Donnellon, Bill Schaffer, Kurtis McDonald, Marcus Stockwell, Greg Walter and Ray White. The JV team was comprised mainly of freshmen who were just taking up the game of golf. They showed excellent improvement from the beginning to the end of the year, finishing with a 1-6-1 record. Low averages for the year were turned in by Bill Schaffer, Benji Lowery, and Marcus Stockwell.

VARSITY GOLF RECORD

August 20: Jonesville Tournament, Manchester (411), 6th out of 8 teams

August 25: Blissfield Tournament, Manchester (252), 5th out of 12 teams

AUGUST
30 Manchester 193 Onsted 181

SEPTEMBER
4 191 Michigan Center 175
10 179 Hanover-Horton 165
12 176 Clinton 186
13 179 Sand Creek 192
17 172 Addison 155
19 191 Ida 187

24 191 Ypsi Lincoln 178
25 174 Michigan Center 172
Concord 168
Sand Creek 198

OCTOBER
1 181 Hanover-Horton 161
3 166 Onsted 182
8 179 Addison 168

12 (Regional) 337, 11th of 16
16 (Conference) 401, 4th place



Senior Cheerleaders

FRONT (l-r): Kendra Schmitt, Kelly Reeb, Julie Hamilton, Nicole Bigelow. BACK (l-r): Rachel Rodriguez, Jackie Ahrens, Jeni Binder, Marci Sloat

JV Basketball Highlights

Our JV girls traveled to Addison on October 9 and played an exciting game against Hanover-Horton at home Tuesday night, October 16, beating Hanover by a score of 42-25. Determination was on our side as we took command of the game from the beginning and never let up. Passes hit their targets and so did Adrienne Wallace who was our leading scorer with 21 points. Sarah Riske was next with 9 points. Leading rebounders were Adrienne Wallace with 14 (7 offensive), Sarah Riske 9, and Jill Faulhaber with 6. Tracy LaRue had 4. We played well the 2nd and 3rd quarters, but our concentration was lacking in the 1st and 4th. Addison won by a score of 45-36.

On Thursday, October 11, we traveled to Michigan Center. The first half was very frustrating for our JV's. We couldn't buy a basket. The second half was a different story. We actually out-scored Center but ended up losing by a score of 41-23. Leading scorers were Melissa Steele and Angela Roehm with 5 points each. Tracy, Adrienne and Sarah followed with 4 pieces. Sarah Riske led in rebounding with 7. Jill Faulhaber, Sharon Bihlmeyer and Adrienne Wallace grabbed 5 each. Missy Steele had 6 steals and

Angela Roehm had 4. The Manchester JV's played an exciting game against Hanover-Horton at home Tuesday night, October 16, beating Hanover by a score of 42-25. Determination was on our side as we took command of the game from the beginning and never let up. Passes hit their targets and so did Adrienne Wallace who was our leading scorer with 21 points. Sarah Riske was next with 9 points. Leading rebounders were Adrienne Wallace with 14 (7 offensive), Sarah Riske 9, and Jill Faulhaber with 6. Tracy LaRue had 4. We played well the 2nd and 3rd quarters, but our concentration was lacking in the 1st and 4th. Addison won by a score of 45-36.

Carpentry, remodeling & renovation

TED MICKA
Specializing in Old Homes
(517) 536-4371

Allan R. Currey D.D.S.
is pleased to announce that

Donald A. Wennersten D.D.S.

has joined his dental practice at
126 East Main Street
Manchester

428-8323
M thru F

8:30-4:30
By appointment

Public Notice

STATE OF MICHIGAN
PROBATE COURT
COUNTY OF WASHTENAW

PUBLICATION NOTICE
Deceased Estate
FILE NO. 90-94856-SE

Estate of JOSEPH B. TAYLOR, DECEASED, Social security no. 379-38-3410.

TO ALL INTERESTED PERSONS:

Your interest in the estate may be barred or affected by this hearing. TAKE NOTICE: On November 13, 1990 at 9:00 a.m., in the probate courtroom, Ann Arbor, Michigan, before Hon. John N. Kirkendall, Judge of Probate, a hearing will be held on the petition of Thomas A. Taylor requesting that he be appointed personal representative of the Estate of Joseph B. Taylor who lived at 10630 Chelsea-Dexter Road, Dexter, Michigan and who died September 9, 1990; and requesting also that the will of the deceased dated January 27, 1989 be admitted to probate and that the heirs-at-law of the deceased be determined.

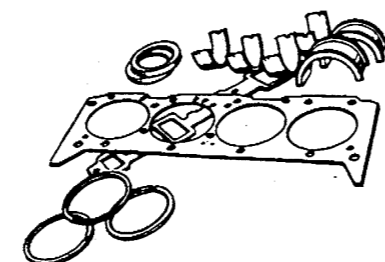
Creditors of the deceased are notified that all claims against the estate will be forever barred unless presented to the (proposed) personal representative or to both the probate court and the (proposed) personal representative within 4 months of the date of publication of this notice. Notice is further given that the estate will then be assigned to entitled persons appearing of record.

KEUSCH AND FLINTOFT, P.C. Attorneys for the Estate
BY: John P. Keusch (P-15927)
119 S. Main St., P.O. Box 187
Chelsea, MI 48118
313/475-8671

Thomas A. Taylor
Personal Representative
1315 Algonac
Ann Arbor, MI 48103

NAPA NAPA NAPA
SPECIALS

Chevy Engine Kits!



350 Re-Ring Kit
Includes gaskets, rod bearings and piston ring set. 227-50
(Offer expires 11/15/90)

ONLY **\$38.99**

Camshaft & Lifter Kit

Camshaft features: durations 290 degrees, valve lift .446. Lifter features: High RPM oil metering. 302-44 (Offer expires 11/15/90)

ONLY **\$54.99**

Spray Paints

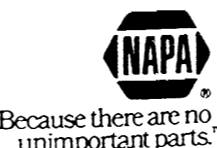


Cans feature the unique FANSPRAY valve. Choose black or white paint, or red or gray primer. 7905.06.07.13.14.36.65.68 (12oz.) Offer expires 11/15/90.

\$2.88



Manchester Automotive
101 W. Main Manchester
313-428-8320



FREEDOM TOWNSHIP Ordinance No. 21

An ordinance under the provisions of Public Act 246 of 1945 as amended to regulate the construction, maintenance and use of private roads within Freedom Township, the use thereof by traffic, the parking of vehicles thereon; the administration and enforcement thereof, fees to defray the administrative and enforcement costs incident thereto, and to insure that residences and buildings within the Township of Freedom may be accessible to police and fire protection, and for other purposes.

This ordinance shall take effect November 22, 1990.

The full and complete ordinance may be inspected or obtained at the Freedom Township Clerk's office, 13785 Pleasant Lake Road.

Pork Avenue Excavating

- Drain Fields
- Trenching
- Grade Work
- Driveways

Doug Welshans
3675 S. Fletcher Road
Chelsea, Michigan 48118
(313) 475-9656

Trap Shoot
Sunday
October 28th
1:30 p.m.
Public Welcome
Manchester Sportsman's Club

Fall Leaf Pickup Village of Manchester

BAGGED LEAVES will be picked up beginning **Monday, October 29** and continuing through **Friday, November 30**. Pick-ups may be on Mondays, Tuesdays, Thursdays or Fridays, depending on availability of Village truck and labor.

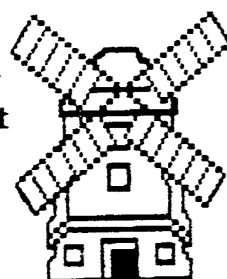
LOOSE LEAVES will be picked up during the month of November with the vac-all truck as scheduling allows. Leaves should be raked to the edge of the road.

COMPOSTING SITE is open during the same hours as the Transfer Site, and there is no charge. Loose leaves should be deposited along the existing windrows; bagged leaves must be emptied along the windrows and the bags taken away from the site.

LITTLE DUTCH CHILD CARE CENTER

"Invites You and Your Family to Visit Our Newly Expanded Center"

Puppet Show and Magic Act
1:30 p.m.



OPEN HOUSE
Saturday
November 10, 1990
Noon - 3:00 p.m.

500 Galloway Drive (Next to Carr Park)

TODDLER TEDDY BEARS—13 months - 2 1/2 years



PRESCHOOL PRODIGY—2 1/2 years-4 years

LATCHKEY—5 years-8 years



CAROLIN GREGERSON—DIRECTOR • (313-428-8988)
—New Programs Now Available Year Round—

MANCHESTER UNITED METHODIST CHURCH

Harvest Dinner

Wednesday, November 7th
2 Servings - 5:00 p.m. and 6:30 p.m.
Advance Ticket Sales Only

For reservations call church office 428-8495 or 428-7822 or 428-7289

Take-out dinners available.

ADULTS \$6.50 CHILDREN (12 & under) \$2.75

Tickets also available at Krauss Pharmacy

Involuntary Smoking: The Risks Are Real

It's a fact: The smoke you inhale as a bystander can harm your health.

As the dangers of "passive" or "involuntary" smoking have become more clear in recent years, there has been a steady increase in support for bans and other restrictions on smoking in public. Today a large majority of Americans believe that people should not smoke in the presence of nonsmokers.

Despite the growing "non-smokers' rights" movement, a 1987 government survey shows that most people in public places will not ask smokers to extinguish or keep from lighting their cigarettes, cigars, or pipes. If bothered by tobacco smoke in public places, half of those polled said they would simply move; 40 percent said they would do nothing.

"People may be sheepish about asserting their rights to breathe clean indoor air for a number of reasons," explained Donald Shopland, a public health advisor at the National Cancer Institute and an expert on tobacco use. "They may not wish to offend or embarrass the smoker or to create any kind of scene. Many people do not fully understand the health hazards of inhaling another's tobacco smoke."

According to a report by the National Academy of Sciences:

• Involuntary smoking is a cause of disease, including lung cancer, in healthy nonsmokers.

• Children of parents who smoke, compared with children of nonsmoking parents, have more frequent respiratory infections and other respiratory problems.

• Simply separating smokers and nonsmokers within the same air space may reduce, but does not eliminate, the exposure of nonsmokers to environmental tobacco smoke.

Today, doctors are warning parents that if someone in a household is smoking, the baby is smoking too. Babies in households where a parent smokes are twice as likely to have respiratory infections such as pneumonia and bronchitis.

For children and adults alike, tobacco smoke can worsen the symptoms of asthma and chronic bronchitis, and it can make life miserable for people with allergies. Even people who are not allergic often suffer eye, nose, and throat irritation, nausea, and hoarseness.

Based on estimates from the National Academy of Sciences report, lung cancer deaths due to involuntary smoking in the home outnumber all cancer causes due to air pollution in our general environment. Moreover, two noted British scientists have calculated that the risk of de-

veloping lung cancer from involuntary smoking in the home is greater than the risk of developing cancer from exposure to asbestos.

In response to these threats to the health and comfort of nonsmokers, millions of American homes are becoming smokefree, as are workplaces across the nation. Laws in 42 states and the District of Columbia now restrict smoking in public places. Laws in 15 states, at least 70 communities, and more than 200 municipalities regulate smoking in the private-sector workplace.

Over half of organizations surveyed in 1987 by the American Society for Personnel Administration reported that they have established policies that restrict workplace smoking for reasons of employee health or comfort. About half of these policies prohibit smoking in all open work areas. A 1987 Gallup survey found that 87 percent of all adults favor restricting smoking in the workplace, including 17 percent who favor a total ban on smoking. Surprisingly, even 72 percent of smokers in the poll said they favor workplace restrictions on smoking.

BUY IT. SELL IT. FIND IT.
CLASSIFIED.

Forty-Five Rabies Cases In Michigan This Year

The Michigan Department of Agriculture (MDA) reports that 45 cases in 17 Michigan counties have been confirmed by laboratory analysis at the Michigan Department of Public Health so far this year.

Affected counties include: Eaton, Genesee, Gladwin, Hillsdale, Ingham, Jackson, Kalamazoo, Kent Lapeer, Livingston, Macomb, Mecosta, Menominee, Oakland, Ottawa, Washtenaw, and Wayne.

Rabies is a viral disease affecting the nervous system of all warm-blooded animals. Infected animals may show behavior changes such as desensitization or aggression. Pet exposure is most common in summer and fall, and typically occurs from pets catching or playing with bats. So far this year, 22 pets have been euthanized as a result of exposure. In addition, 12 pets are under quarantine due to exposure to rabid animals. Animals that tested positive to rabies include

bats, cats, a skunk and a fox.

"It is crucial for pet owners to be aware of the results of rabies and take appropriate measures in preventing rabies," said Dr. Harry Michael Chaddock, MDA's Animal Industry Division director and state veterinarian. "In 1989, there were 29 confirmed cases of rabies in animals. The number has risen substantially this year, and we do not want it to continue."

An effective way to prevent rabies is for owners to have their dogs, cats and livestock vaccinated by their local veterinarian. The vaccination, which has a reasonable fee, not only protects indoor and outdoor pets, but also helps prevent pets from transmitting rabies to their owners.

For further information, please contact Dr. Nancy Frank, companion animal and research species veterinarian in Lansing at (517) 373-1077, or Dr. Freeman Hayes, assistant state veterinarian in Escanaba at (906) 786-5462.

FOX TENT AND AWNING CO.
USED CANVAS PIECES
Many sizes, ideal for boats, trailers, cars, motor homes, campers, woodpiles etc.
SAVE \$\$\$\$\$\$
817 S. ASHLEY - P.O. BOX 1164 - ANN ARBOR - (313) 665-9128

Brooklyn Living Center Holds Luncheon

Manchester Area Senior Citizens enjoyed a complimentary luncheon and sing-a-long at the new Brooklyn Living Center on Friday, October 5th. Gertrude Ahrens, a local senior, has recently moved to the new Retirement Center, and really enjoyed having her friends join her at her "new home" in Brooklyn.

Brooklyn Living Center serves the noon meal daily, and guests are always welcomed. We offer fifty apartments, all on the ground floor, each with a sliding door onto a patio with lovely views from all apartments. Included in the monthly rental fee are housekeeping, laundry service, utilities, and a staff person on duty 24 hours daily in case of emergency. We offer social activities with planned transportation by our Social Life director, including errand runs to the bank, grocery, and pharmacy at least once a week. Mail is delivered to

the lobby area daily and we have our own beauty and barber shop.

Brooklyn Living Center is the third semi-independent complex in the Jackson area owned and operated by Lloyd and Joyce Ganton and sons. The first center, Arbor Oaks Living Center, was opened in 1984. The Ganton family has had long-term experience with this type of retirement living. Ganton Retirement Centers, Inc., also operates Arbor Manor Care Center, a nursing home in Spring Arbor, offering basic and skilled nursing care. Any tenant in any of the Ganton Living Centers has first priority if nursing home care should ever become necessary.

One tenant at Brooklyn Living Center decided not to sell her home prior to moving to the center, with the option of returning if the arrangement does not meet her needs. This plan was fine with Troy Ganton, manager, who realizes that a major change

in residence is a very difficult decision, and one not made easily. "Most of our tenants really love living in our complexes after an initial adjustment period. Having a safe and secure place to live often relieves seniors of many fears, and having their basic living services met leaves more energy for leisure activities and socialization," states Tony.

The Ganton family encourages you to visit Brooklyn Living Center for a tour and complimentary lunch. Please call 592-2828 for an appointment or for additional information. We are located directly behind the Brooklyn Plaza at the intersection of M-50 and M-124. We look forward to further serving seniors in the Manchester community.



Manchester Area Senior Citizens arrive at Brooklyn Living Center.

Red Cross Open House

The Washtenaw County Chapter of the American Red Cross is holding an open house on Sunday, October 28, 1990, from 2:00 to 4:00 p.m. at the Chapter, 2729 Packard Road, Ann Arbor. Admission is free and open to the public.

Displays and demonstrations will highlight the many programs and services the Red Cross offers to the community including CPR, water safety, AIDS education and disaster relief. Information on volunteer opportunities will be available.

There will be pumpkin raffles for children and door prizes for adults. Refreshments will be served. For more information, call 971-5300.



Hunting for the Best Buys? You'll Bag Them in the Classifieds.



Troy Ganton, Manager of Brooklyn Living Center and Rubena Boelter.

The AURA INN
11275 Pleasant Lake Road Phone 428-7993
SUNDAY BRUNCH
10 am-1 pm
HOURS: OPEN EVERYDAY 12-12, except Mondays

FAHEY Realty
215 E. MAIN STREET OFFICE: 313-428-9298
MANCHESTER, MICHIGAN 48158 RES: 313-428-7188
135 W. MICHIGAN AVENUE 1-517-456-7491
CLINTON, MICHIGAN 49236
MEMBER LENAWEE COUNTY BOARD OF REALTORS
MULTIPLE LISTING SERVICE

Kleinschmidt Hardware
19860 Sharon Valley Rd. Manchester, MI
Monday-Friday 7 a.m.-6 p.m. Phone 313-428-8337
Saturday 8 a.m.-5 p.m. Sunday 10 a.m.-4 p.m.

Carhartt
Built better than it has to be.
All Carhartt Outdoor Wear
10% OFF
Our Everyday Low Prices
Good Thru Sun. Oct. 28th
Rugged as the men who wear them.®

SOLID OAK
A Lifetime Of Dining...
with this handsome pedestal table and matching bow back chairs. It comes with a "15 year" warranty and is protected with RESISTOVAR® II, a finish BUILT FOR LIFE®. The highest quality in Solid Oak Dining.
a BARK RIVER collection by
Includes TABLE and CHAIRS \$999
RESISTOVAR® II by Lilly Coating, Inc.
The finish on your Solid Oak Treasures will stand up to:
•Wood Alcohol •Citric Acid
•Nail Polish Remover •Ink
•Acetone •Lacquer Thinner
and Much More!
Country Charm And Convenience
Backed by a "15 year" warranty and protected with RESISTOVAR® II a finish BUILT FOR LIFE®. The highest quality in Solid Oak Dining is enhanced by the design of this spacious double pedestal table with four self-storing leaves which extends to 114 inches ample seating for twelve
Includes TABLE and 6 CHAIRS \$1999
Reg. \$2299

Tenpenny's
FREE DELIVERY AND SET-UP
OAK AND CHERRY FURNITURE
112 E. Michigan, Clinton 517 456-7445

SHE'S ONE OF US...
PATRICIA NEWKIRK HARDY
JUDY DOW ALEXANDER
LEILA BAUER
VIRGINIA JOHANSEN
SHARON McFARLANE
LUCY CROSSEY
BARBARA JONES
ALICE DOBSON
SUE JORDAN
PAT CLYDE
DONNA PALMER
VIRGINIA RIDDLE
PATRICE FAHRNER
MARJORIE BEAUMONT
AUDREY HODGES
JANIS KEOGH
HARRIETT SALAS
GAY KONSCHUH
JANE SWEET
LETTY WICKLIFFE
COUNCILWOMAN TERRY MARTIN
WANNA BALDUS
FLORENCE CRANE
ELIZABETH KLEINSMIDT
MARIANN MORTENSEN
BEANE FUSILLER
KATHLEEN CHAPMAN
GINETTE CONSIGLIO
ANGELA WELCH
ARLENE BAREIL
ALICE STIMPSON
RUTHANN HELMER
PEGGY CONLIN
MICHELE RICHARDSON
DORIS WAGGONER
ELSE HELLER
CAROLYN FARMER
HELEN HAGEN
BETSY DURBIN
JANE TALCOT
PEGGY HAINES
WASHTENAW COUNTY CLERK/REGISTER
VOTE NOVEMBER 6
Retain Haines
Paid for by the Retain Haines Committee
Gene Fowler, Treasurer

Wish this 2nd grade teacher a Happy 30th!

1991 CALENDARS ARE HERE
The following local merchants are again cooperating by selling calendars for the Manchester Area Historical Society:
A & J Travel Iron Horse Antiques
Baker's Dozen Jon's Photo
Blacksheep Tavern Krauss Pharmacy
Bridgewater Lumber Co. Manchester Antique Mall
Carol's Cut & Curl Marti's Beauty Salon
Gifts in Tyme Pyramid Office Supply
Corky D's Village Gifts
18th Century Shoppe Village Hair Forum
Flower Garden Wacker's Convenience Store
Bethel Church - 150 Committee
E. G. Mann & Sons, Bridgewater
Calendars are \$4.00; mailing envelopes available upon request.
Calendars make excellent Christmas gifts. With each purchase you will again be supporting the Manchester Area Historical Society which is conducting its eighth annual calendar sale.
Forward special requests to calendar chairperson Deb Havens at 428-8586.

Computer Disks And Power

Many IBM-compatible computers have hard disks. The hard disk is where information is stored permanently. Such information consists of programs and data. The hard disk is one of the most critical components of a computer since it is the location of information such as customer lists, documents, and accounting records for many businesses.

A major concern among computer users is hard disk failure. There is no excuse for not keeping current backup information, but this will be the subject of a later article. The topic to be addressed now is keeping your hard disk running as long as possible. Often a hard disk will last five to ten years with proper care.

Hard disk utility programs

exist to monitor the utilization and possibly extend the lifetime of the disk. These include SpinRite from Gibson Research, PC Tools from Central Point Software, and Norton Utilities from Peter Norton Computing.

Physically, the hard disk consists of a platter (similar to a record) that spins continuously while the power is on. This accounts for a portion of the noise heard from most computers. The motor and bearings that spin the platter will eventually wear out. This brings up the question, "Should I leave the power on continuously or turn the power on and off every day?"

The answer to this question is to simply leave the power on. The electricity consumed is minimal.

According to major drive manufacturers, there is no difference, with regard to spindle bearing wear between continuous spinning and powering up and down every day. However, the power surges caused by turning a computer on and off is harder on the drive and computer electronics than if the computer remained powered on. An appropriate analogy is that of a light bulb. A light bulb rarely burns out when the light is on. Normally, the light bulb burns out when the light is switched on due to the power surge. The same power surge applies to the computer. That surge is harder on the disk drive and other electronics than any physical wear caused by leaving the power on. Note: this surge of power occurs regardless of the presence of a surge protector.

Woodbrook Enterprises, Inc.

Trail Walk

There's no doubt about it, winter is coming! For plants, this time of year brings change from active growth to some of the many schemes of coping, which spell survival during the upcoming period of cold, short day length, and drought. The trail walk, Sunday, November 4, 2:00 p.m., at the Matthaei Botanical Gardens will be on the topic of "The Great Transition." All interested persons are welcome to join the walk. Meet the docents at the steps of the building. Dress for the weather, particularly wear waterproof shoes. The walk will last approximately 1 1/2 hours.

The Matthaei Botanical Gardens is located at 1800 N. Dixboro Road, 1/2 mile south of the Plymouth Road intersection. Because of construction on Plymouth Road, visitors coming from the west are advised to take Geddes Road to Dixboro Road.

Time To Change Your Battery

Smoke detectors save lives - if they're allowed to. Fire officials say too many people simply forget to check and change the batteries in their smoke detectors once they install them.

To help people remember, the International Association of Fire Chiefs, and the American Burn Association have developed a nation-wide fire safety education program called "Change Your Clock, Change Your Battery." It encourages Americans to get into the habit of changing the batteries in their smoke alarms each fall when they change their clocks from daylight-saving time.

The time change, which occurs October 28, 1990, is also a good time to check flashlight batteries. It could help make the end of daylight-saving time into the beginning of life-saving time for many American families.

Wedding Bells Ring



An afternoon ceremony united Carol Annette Buss of Lakewood, Ohio and Dennis Carl Durnwald of Rocky River, Ohio in marriage.

The September 22 nuptials were held at Emanuel United Church of Christ in Manchester with the Rev. Paul Kuntzman of Emanuel and the Rev. James Singler of St. Christopher's Catholic Church, Rocky River, Ohio officiating.

Elaine Wilmarth of Maryville, Missouri, sister of the bride, was matron of honor, while Kenneth H. Durnwald, brother of the groom of Fremont, Ohio, was best man.

Seating the guests were Mark Hoffman of Sheffield, Ohio and Richard Hotz, cousin of the groom of Toledo, Ohio.

Carl and Nondus Buss of Manchester are parents of the bride, and the groom's parents are Hilary and Betty Durnwald of Fremont, Ohio.

Following the ceremony, a reception was held at Weber's Inn in Ann Arbor.

The newlyweds have returned from a ten day honeymoon in the Florida Keys and are residing in Rocky River, Ohio.

Freedom Township

Proposed Synopsis
October 9, 1990

The meeting was called to order with all board members present. Minutes and treasurer's report were approved with \$46,929.75 in the General Fund and \$444.10 in the Liquor Fund.

Public comment was taken concerning trash and salvage yard ordinances and their enforcement.

Various communications were read and discussed including fire runs and several newsletters. The board passed a resolution of gratitude and good wishes to retiring County Road Commission manager, Mike Anderson. Also received and accepted, with regret, was a letter of resignation from Planning Commission member, Richard Roehm. Assessor Little, assisted by the County Equalization Department, will appear at the State tax tribunal hearing concerning Detroit Edison appeal for assessment relief. The Planning Commission reported that the zoning ordinances are being compiled for printing and that the Holloway Gravel Co. has requested monies from escrow for paving a drive into the pit.

Under old business, the Board approved painting of the townhall kitchen.

New business included a resolution adopting Ordinance #21-Private Roads, to outline minimum standards for any new private roads built in the township.

Bills #2877 through 2888 were approved for payment. Meeting adjourned 10:10 p.m.

Submitted by,
Julie Schaible, Clerk
Approved by,
Robert Little, Supervisor

ROMANCE BLOOMS
at the library in good books by
Anne Tyler
Graham Greene
Gail Godwin
and more.
Call the library for details.

FALL DISCUSSION SERIES

Without a doubt, romantic love is one of life's universal experiences, as well as one of its most unpredictable and puzzling. We all have known the sweet bliss and the wrenching despair that desire can evoke. Few have escaped love's power to destroy, to lead to self-deception and loss of individuality. And fewer still have never known love's redemption or gained a heightened self-knowledge and a richer, more fulfilling life for having loved.

A chance encounter with a mysterious woman turns a proper Victorian gentleman's world upside down. Come talk about "The French Lieutenant's Woman" with Professor James Diedrick of Albion College. The first program in a five-part reading and discussion series on romantic love features John Fowles' intriguing novel which became a popular motion picture. The first meeting is November 8 at 7:30 p.m. at the Blacksmith Shop. Copies of the book are available at the library. For more information call 428-8045.

DEBORAH ENGLEBERT
Realtor
Res. Phone: 313/475-8303

the Charles Reinhart Co.
Realtors
2452 East Stadium Blvd.
Ann Arbor, Michigan 48104
Phone 313/971-6070

the Charles Reinhart Co.
Realtors
2452 East Stadium Blvd.
Ann Arbor, Michigan 48104
Phone 313/971-6070

HAUNTED
OCTOBER 28, 29, 30, 31
TIMES: 6:30 to 9:30
506 FURNACE ST.
FREE ADMISSION
COME IF YOU DARE!!!

OPEN HALLOWEEN
6:00 to 10:00
1 BLOCK SOUTH OF
THE MIDDLE SCHOOL
OFF M-52
IN MANCHESTER

ELECTION NOTICE

TO THE QUALIFIED ELECTORS OF
Bridgewater, Freedom, Manchester
and Sharon Townships

NOTICE IS HEREBY GIVEN THAT A
GENERAL ELECTION

will be held in said governmental unit on

TUESDAY, NOVEMBER 6, 1990
from 7:00 a.m. to 8:00 p.m.

for the purpose of electing candidates for the following offices:

Governor and Lieutenant Governor; Secretary of State; Attorney General; United States Senator; Representative(s) in Congress; State Senators; State Representatives; two members of the State Board of Education; two University of Michigan Regents; two Michigan State University Trustees; two Wayne State University Governors; County Commissioners, County Clerk/ Register of Deeds. Candidates seeking the following non-partisan offices are: two Supreme Court Justices; Appeals Court Judge; Circuit Court Judge; District Court Judge; Probate Judge and some township offices.

ALSO, to vote on the following proposition:

PROPOSITION TO INCREASE THE TAX LIMITATION FOR IMPLEMENTING, MAINTAINING, AND ENHANCING THE DIRECT DELIVERY OF HUMAN SERVICES TO THE COMMUNITIES IN WASHTENAW COUNTY

Shall the tax limitation on the total amount of general ad valorem taxes which may be imposed each year for all purposes upon real and tangible personal property in Washtenaw County, Michigan, be increased as provided in Section 6, Article IX, of the Constitution of Michigan for a period of Five (5) years, beginning with the December 1, 1991 tax levy, not to exceed .25 of one mill, twenty-five cents (\$.25) per One Thousand Dollars of the assessed valuation as finally equalized for the purpose of implementing, maintaining, and enhancing the direct delivery of Human Services to the communities in Washtenaw County.

POLLING PLACES ARE LOCATED AS FOLLOWS and all are accessible by handicapped:

Bridgewater Township Hall
Clinton-Manchester Rd.
Freedom Township Hall
11508 Pleasant Lake Rd.
Manchester Township Hall
275 S. Macomb
Sharon Township Hall
18010 Pleasant Lake Rd.

The County Treasurer's Statement:

I, Michael A. Stimpson, County treasurer of the County of Washtenaw, State of Michigan, do certify that according to MCLA 211.203 Sec. 3 (3), and the records of this office, as of September 12, 1990 the total of all voted increases over and above the tax voted limitation established by the Constitution of the State of Michigan in Local Units of government affecting the taxable property in Bridgewater, Freedom, Manchester and Sharon Townships, State of Michigan, in said County is as follows:

LOCAL UNIT	VOTED INCREASE	YRS. EFFECTIVE
County of Washtenaw	0.25 Mill 0.25 Mill	1988 & Future 1988-1996 Incl.
Bridgewater Township	None	
Freedom Township	None	
Manchester Township	1.25 Mills 0.50 Mill	1987-1995 1989-1998 Incl.
Sharon Township	None	
Washtenaw Comm. College	1.25 Mills 1.00 Mill 0.70 Mill	1986 & Future 1984-1990 Incl. 1987 & Future
Jackson Inter. School Dist.	4.00 Mills	1985 & Future
Lenawee Inter. School Dist.	None	
Washtenaw Inter. School Dist.	1.50 Mills 0.50 Mills 1.50 Mills	1985 & Future 1985 & Future 1987 & Future
Chelsea Schools	20.50 Mills 1.00 Mill 5.80 Mills 2.10 Mills	1987-1991 Incl. 1988-1991 Incl. 1989-1991 Incl. 1989-1991 Incl.
Columbia School District	24.65 Mills	1988-1990 Incl.
Clinton Community Schools	0.50 Mill 0.50 Mill 21.50 Mills	1989-1991 Incl. 1989-1991 Incl. 1990-1992 Incl.
Dexter Community Schools	24.65 Mills 1.00 Mill	1991 Only 1989-1990 Incl.
Grass Lake Community Schools	26.50 Mills	1990 Only
Manchester Public Schools	22.78 Mills 4.80 Mills 1.20 Mills 1.50 Mills	1986-1990 Incl. 1988, 1989, 1990 1988, 1989, 1990 1988-1992 Incl.
Saline Area Schools	1.00 Mill 23.23 Mills	1987-1996 Incl. 1990 Only
Napoleon Schools	21.80 Mills 3.00 Mills 1.50 Mills	1987-1991 Incl. 1988-1991 Incl. Unlimited

DATED: September 12, 1990

Ann Arbor, Michigan Michael A. Stimpson
Washtenaw County Treasurer, Michigan

Published in compliance with M.C.L.A. 168.653a

Karen Weidmayer
Julie Schaible
Kathleen Hakes
Duane Haselschwerdt
Clerks

Garland's Pub

M-52—Austin Rd. Manchester

Open Monday-Saturday 7 am-2 am
Sunday 12 noon-10 pm

Live Band Fri. & Sat.

Call for details - 313-428-9293

George Daigle Ph.D.

is pleased to announce the opening
of his office for the practice of

Clinical Psychology

6384 Jackson Rd.
between Zeeb and Baker Roads

Hours by appointment 769-1192



The highest city in the U.S. is Leadville, Colorado. It's nearly two miles above sea level in the Rocky Mountains.

PARR'S AUTO BODY
BODY WORK - PAINTING
FREE ESTIMATES
INSURANCE WORK
GLASS INSTALLATION
18481 W. Austin Road
Manchester, Michigan
Phone
313-428-9538

Margaret O'Connor

IS ENDORSED BY:

CHAMBER OF COMMERCE
MICHIGAN FARM BUREAU
SMALL BUSINESS ASSOCIATION
MICHIGAN TOWNSHIP ASSOCIATION
MICHIGAN MILK PRODUCERS ASSOCIATION
NATIONAL FEDERATION OF INDEPENDENT BUSINESSMEN

KNOWN BY
THE COMPANY YOU KEEP.



VOTE FOR **MARGARET O'CONNOR**
REPUBLICAN

Paid for by the Committee to Re-Elect Margaret O'Connor
4300 Ann Arbor-Saline Road
Ann Arbor, MI

let your words
do the talking
in the

CLASSIFIEDS

MICHIGAN PEAT SALES: Black dirt for sale, \$12 a yard delivered. Fast delivery. 428-9664 tfn

C & B PAINTING: Interior-Exterior. Free estimates. Contact Charles E. Benedict. Phone 428-7136 or 428-7416 tfn

LOST OR FOUND A PET? Call Humane Society, 662-5585 tfn

LITTLE WACK EXCAVATING: Licensed and insured. Basements, drainfields, digging, bulldozing, trenching, black dirt, sand, gravel. Snow removal and salting. Paul Wackenhut 313-428-8025 tfn

MERRIMAN INSULATION: Free estimates. Blown-in cellulose professionally installed. George Merriman, phone 517-592-5527 tfn

PIANO TUNING & REPAIR: Qualified technician. Ron Harris 475-7134 tfn

MANCHESTER ANTIQUE MALL: 35 Dealers. Open 7 days. 10-5. 116 E. Main, 428-9357 tfn

FIELDER PAINTING: Interior and exterior. Free estimates. Senior Citizen discount. Phone 428-8506. tfn

AVAILABLE FOR WEDDING receptions, parties, meetings. Hall rental \$175, \$40 cleaning, catering available. For further information call 428-8398 or 428-7637 tfn

WALKOWE'S HOME IMPROVEMENT COMPANY: Phone 313-428-8468. Seamless aluminum gutters for low prices, and dependable service. tfn

BLACK DIRT FOR SALE by the pickup load or delivered. 428-9265 after 6 pm tfn

HAULING: Sand, gravel, etc. 428-9189 8am-6pm or 428-8203 tfn

COPIES in your choice of gold, lavender, yellow, mint green, ivory or peach. Reasonable prices. The Manchester Enterprise, 150 E. Main tfn

ROOFING: HOMES, BARNs. Repairs of all types. 15 years experience, licensed, free estimates. 517-522-5175. Kirk Randall tfn

ALBER EXCAVATING: Basements, drainfields, driveways, finished grade, water and sewer. Call 313-428-8636 tfn

LITE DECORATING: Wall-papering, trim painting. Juli Robinson. 428-9657 tfn

DUPLEX FOR RENT in Village. 3 bedroom, 1 1/2 baths, \$600/month 428-9150, leave message tfn

HELP WANTED: All positions, full time, part time. Apply in person. Chelsea Big Boy. tfn

THOMAS NELSON CONSTRUCTION, INC. Experienced, licensed and insured contractor. Site work, land clearing, bulldozing, and additions. Steel and wood frame buildings. 429-4817 11/1

2 BEDROOM APARTMENT in Village of Manchester. References. 428-9380 tfn

TAKING APPLICATIONS FOR efficiency apartment. 428-9216 tfn

FARM ANIMAL CARE Service: Evenings, weekends, holidays. Experienced, references, dependable. Specializing in horses. 428-8005 tfn

INSULATION AND ROOFING: Custom insulation. No plugs in your siding. No chemicals added. Quality workmanship guaranteed. Senior discount. Licensed and insured. 14 years experience. Full House Insulators. Call Mike for free estimate. 313-428-9692 tfn

SMALL TIME VIDEO: Video service to meet every need-wedding specialty. Very reasonable rates. Lester Guest. 428-8962 evenings. 11/29/p

WACKER'S GENERAL STORE is looking for a person 18 years or older. Non-smoking, dependable, who would like a job with variety. Part or full time. Apply in person. 10/25

PARENTS: LITTLE DUTCH CHILD CARE CENTER offers educational programs for your child ages 2-3 years. Music, art, science, and field trips planned by a certified staff. Information to follow soon about our toddler teddy bear program for children 1-2 years, as well as new afternoon preschool prodigy program. Contact the program director at 428-8988. 10/25/p

ESTATE SALE: Including chairs, tables, lamps, kitchen items, dishes, glasses, Christmas decorations, small appliances, television sets, handtools, misc. household items. NO EARLY SALES. Fri. Oct. 26, 10am-6pm, Sat. Oct. 27, 10am-4pm. 546 W. Main, Manchester 10/25/p

QUIET COUNTRY: Updated 2100 sq. ft. 4-bedroom, 1 1/2-bath home on 2.3 acres. 50x104 ft. pole barn. Manchester School District. 20 minutes from Ann Arbor. Less than \$90,000. Plus acres available. By owner 662-8069 10/25/p

GOLD CREDIT CARD: Visa/Mastercard guaranteed. No security deposit. *Cash advance* 1-900-446-0800. \$25 fee 10/25/p

TOPSOIL, CLEAN SAND, landscape timbers. Delivery available. 475-9201-leave a message. 10/25/p

A LOVING MOTHER wants to care for your child/children in my Bridgewater country home. Full and part time, Mon-Fri, 6am-6pm. All ages welcome. Child care references. 313-429-2709 after 6pm 10/25/p

FOR SALE: USED BABY ITEMS Crib, battery operated swing, clothes, stroller, and more. Call 428-7028

STADIUM APARTMENTS: Excellent Ann Arbor location, W. Stadium Blvd. at Pauline, 1 block from shopping district. 1, 2, 3 bedroom units from \$450. Free parking and short-term leases available. For more information, phone 930-6644.

FERGUSON T03551, 3-pt. hitch, PTO, drive pulley, 6 ft. blade, chains, draw bar. Needs tires and rear seal, runs good. \$1,250 firm. 428-7275. p

87 RANGER PICKUP: 4 cyl, 5-speed, OD, duraliner, alum. wheels, running boards, stereo, astro-cap, good rubber, looks and runs good. \$4,250. 428-7275 p

FOR SALE: 24 FT. '79 MIDAS RV, GMC, under 40,000 miles, roof air, rear bath, sleeps four. 428-8510 tfn

SIX 10-ACRE PARCELS & ONE 15-acre parcel, or 75 acres, land contracts. 1-517-688-9259 11/8/p

REDUCED: THIS ROLLING 5 acres with mature trees is the setting for this clean, 4-bedroom ranch home. Finished walkout basement with fireplace. Pole barn and paved drive. Great place to raise your children. \$125,000. SANDY BALL 475-9193 or 475-2603

CHILD CARE IN MY COUNTRY home. Snacks, stories, activities, etc. Good location for people who work in Saline or Ann Arbor. 428-0049. Dawn 11/1/p

PRESS OPERATOR OR PRINT- ER NEEDED with 2 color close registration experience. Will use Ryobi 3302M and 375 AB Diek with T-head. Knowledge of stripping and bindery helpful. Excellent working conditions. Please send resume with salary requirements to: George Olsen, Photo Marketing Association International, 3000 Picture Place, Jackson, MI 49201 11/1/p

HALLOWEEN SPECIAL: ALL HORROR movie rentals \$1, Oct. 28-Nov. 3 at Reel Video, 114 Adrian 11/1

PIZZA DRIVERS NEEDED: Must be 18. Apply in person at Domino's Pizza, 520 S. Main, Chelsea 11/1

CHELSEA METHODIST RETIREMENT HOME A great place to work! PART TIME POSITIONS RN-days, LPN-afternoons, Nursing Assistants-days & nights, Dietary Aides-3:45 to 7:30 p.m. Call 313-475-8633 11/1

WANTED: SOMEONE TO clean my home. 995-1233 days or 428-8638 evenings p

PHEASANTS: Ringnecks, red and yellow Golden, Amhearts silvers. 428-7787 p

GAS DRYER FOR SALE: 428-7728 p

UNIQUE, IMMACULATE 3 bedroom, 2 bath ranch in pristine condition! 1.91 acres, yet city water & sewer. Quality construction throughout. Wet plaster, hardwood floors. \$126,500. Call Julie Simpson 665-0900, eves. 663-2453, or call Deborah Engelbert 971-6070, eves. 475-8303. The Charles Reinhart Co.

CARRIERS NEEDED FOR door to door delivery in Ann Arbor, Ypsilanti & surrounding communities. You must be at least 18 years old with insured vehicle. Call 313-434-7715 Mon.-Fri., 9am-4pm

WHAT A DEAL!!! '80 Monte Carlo, 70,000 miles, good cond. \$1,500 or BO. Refrigerator/freezer \$100, sofa with 2 chairs \$100. 428-9686 after 5. p

HUSKYLOCK SERGER 340D for sale. \$395. Call 517-456-4920 p

FOR SALE: 2 TIRES P215/75R15 mud and snow, like new, used 1 season. Call 428-7230 p

Classified advertising will be \$2.75 minimum charge for 20 words or less and 8¢ for each additional word. All classified ads are payable in advance, if not, a billing charge of \$1.00 will apply. Deadline for classified advertising will be 10 A.M. Tuesday for that week's publication. Cards of Thanks will be \$5.00 minimum charge for 50 words or less with a charge of 8¢ for each additional word.

CHILD SITTER NEEDED to see 10 yr. old off to school 4:45am to 3:30pm. 428-9865 p

ST. JUDE, may the Sacred Heart of Jesus be adored, glorified, loved and preserved throughout the world now and forever. Sacred Heart of Jesus, pray for us. St. Jude, helper of the hopeless, pray for us. Amen. Say the prayer nine times a day. By the eighth day your prayer will be answered. It has never been known to fail. Publication must be promised. Thank you, St. Jude. AEB

Jim and Olga Cox

We would like to thank the following people for sponsoring us for last Saturday's Bike-A-Thon "Wheels for Life" for St. Jude Children's Hospital. Thanks Debbie Ellison, Dr. Bruce Bates, Nancy Peters, Irene Grenier, Jack Grenier, Justo Burgos, Amy Booth, Sonja Wackenhut, and special thanks to Shannon Fleck, coordinator.

Thanks again, Rose, Ben, and Clint Grenier

Cards of Thanks

Sharon United Methodist Youth Group would like to thank Jerry Dresselhouse for donating the pumpkins, Jon at Jon's Photo for letting us sell in front of his store, and to all the people who supported us. Thanks to all of you a large contribution is going to the Butterfield fund.

your advertising dollars do better in
the classifieds

Veterans Families & Guests Welcome!



"Veterans Day" Dinner/Dance

Saturday, November 10, 1990

American Legion Post
203 Adrian St.
Manchester, MI

Tickets Available At The Post -
Wednesday, October 24 thru Friday, October 26
Monday, October 29 thru Friday, November 2
5:00 p.m. - 6:00 p.m. or phone 428-8849

Deadline To Purchase Tickets - Monday, November 5, 1990

Dinner 7:00 p.m.
"Unveiling" of Past-Commander/President Pictures 8:30 p.m.
Dancing 9:00 p.m.

NO CHILDREN AFTER 9:00 P.M. PLEASE

Let's show our support to all of our "Vets" - past and present - for a job "Well Done"



NOTICE TO VOTERS IN MANCHESTER TOWNSHIP

Including Physically Handicapped

Absent voter ballots for the November 6, 1990 General Election may be obtained at the Manchester Township Office - 275 S. Macomb St. from 8:00 a.m. to 12:00 noon on Monday, Tuesday, Wednesday, and Friday. Electors who wish to receive an A.V. ballot for this election by mail must submit an application by 2:00 p.m. on Saturday, November 3, 1990. Persons qualified to obtain an A.V. ballot for the general election may vote in the clerk's office up to 4:00 p.m. on Monday, November 5, 1990.

Kathleen M. Hakes, Clerk

Money Management

RIDING THE STOCK MARKET ROLLER COASTER

Just because the stock market sometimes behaves like a roller coaster, that doesn't necessarily mean you should pass up the ride. In fact, the Michigan Association of CPAs says that market fluctuations can mean profits for small investors, if you follow some carefully tested market strategies.

The Growth Factor

Smart investors do research before they invest in the market. It's up to you to look for companies that meet important criteria for growth, including several years of solid earnings, a reasonable or even declining debt and the ability to expand into new

markets.

Take the example of a major fast-food chain. When its rocket rate of growth began to slow, the company took action. It introduced new services, including a drive-in window and a breakfast meal. In addition, it moved into the European market. Those steps moved it back onto a growth track. Information about a company's earnings and future plans can be found in its quarterly and annual reports. One way to determine how a company's stock is expected to perform in the future is by checking to see if officials of the firm have purchased stock over the last few months. People tend to sell stocks for various reasons, but they only buy when they expect to make money. Publications that list this

kind of information are available in libraries or from a broker.

Before you invest in a company that has had a great track record of growth, find out if it can sustain that growth. One sign would be a high reinvestment rate which indicated that the company is profitable and is pouring most of its earnings back into the company.

Invest For The Long-Term

To make money in the market, be prepared to hold onto your investments for at least a year. Company's earnings grow over time, which means it may take three to five years before you'll see a real return on your investment. In other words, if you are planning to withdraw funds in the very near future in order to pay for a child's college education or purchase a new home, think twice. You don't want to be forced to cash in an investment just when the stock market hits a new low.

Play Detective

Cautiously follow up on any solid leads related to your own profession or trade. For example, suppose you own a retail store that, among other products, sells personal computers. You notice that the cost of computer paper is beginning to rise. If you then

decide to buy stock in companies that supply paper, you may have an edge of six months to a year on professional investors. Stay alert for market trends that indicate the time is right to invest in a company whose stock is still a bargain.

A Word Of Caution

Just because the current yield is very high doesn't mean the stock is a good bet. Some companies offering terrific yields are in deep trouble and those wonderful yields could vanish quickly. For instance, some financial advisors suggest shying away from companies whose debt exceeds 40 percent of total capital.

Keep Tabs On Your Market Investments

Once you buy stock, don't sit back and wait for the dividend checks to start rolling in. Keep track of your investment by reading the company's quarterly and annual reports and newsletters. However, be aware that management may sometimes view a company's performance through rose-tinted lenses.

Find out how the company's products are selling. Does its merchandise still have an edge on the competition? For instance, suppose that you've invested in a

Don't Put All Your Eggs In One Basket

Smart investors also diversify their portfolios, never putting all their investment eggs in one basket. CPAs suggest that you buy at least six or seven solid stocks and keep an eye on a number of other potential buys. Consider spreading your investments among varying types of assets, including stocks, equity and bond funds, certificates of deposit and money funds.

Keep Tabs On Your Market Investments

A financial planner can help you decide how to divide your money among these assets.

To Buy Or Not To Buy

Obviously, the stock market isn't the best choice for every investor. But by following the stock market investment strategies mentioned in this article, you can substantially reduce your risk and still enjoy an attractive return on your investment. Not everyone likes to ride a roller coaster, but many find the experience exhilarating. The same can be said for riding the stock market.

For further advice on investing in the stock market, consult a qualified advisor, such as a CPA.



The original Library of Congress, consisting of 3,000 volumes, was incinerated by the British in the War of 1812.

Wacker's General Store



Pepsi, Diet Pepsi
Mountain Dew
Pepsi Free
Sugar Free Pepsi Free
A & W Root Beer
Vernors
Sugar Free A & W
Sugar Free Vernors
Slice & Diet Slice

\$2.49

1/2 Liter 8 Pack plus deposit

2 Liter.....\$1.49 plus deposit

6 Pack Cans....\$1.89 plus deposit

G.E. Wacker Inc.

Gasoline-Fuel Oil-Grease
Motor Oil-Diesel Fuel
9050 Chelsea-Manchester Road
Manchester, Mich. 48158

Summer Hours
Monday-Friday 7 am-9 pm
Saturday 8 am-9 pm
Sunday 9 am-9 pm

LANA POLLACK

Michigan State Senator



Lana Pollack, Michigan's hardest working State Senator, believes that our most precious resource is our children. From pre-school to university, her name is synonymous with education. She works both to free education from its reliance on property taxes and to increase its financial support.

Lana Pollack is the legislature's foremost environmentalist. After six years of hard work, the "polluters pay" bill has finally passed in both houses of the Legislature, and awaits the signature of the Governor. This is a milestone in the environmental effort in Michigan.

Lana Pollack fights those who are trying to take away freedom of choice with regard to birth control, abortions and living wills.

RE-ELECT STATE SENATOR LANA POLLACK TUESDAY NOVEMBER 6

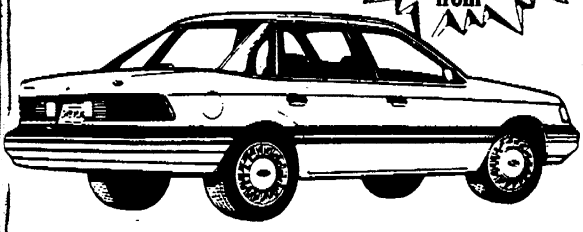
Paid for by Pollack for Senate
P.O. Box 7710, Ann Arbor, MI 48107
Spurgeon Watkins, Treas.



Spook-tac-ular Bargains

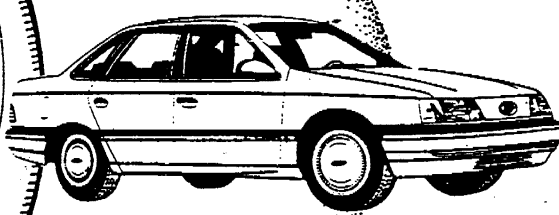
SAVE THOUSANDS

ONLY \$7995
5 to choose from



1990 TEMPO GL 4 Door
Automatic, air, tilt, cruise, stereo. Low miles.

ONLY \$9995
several to choose

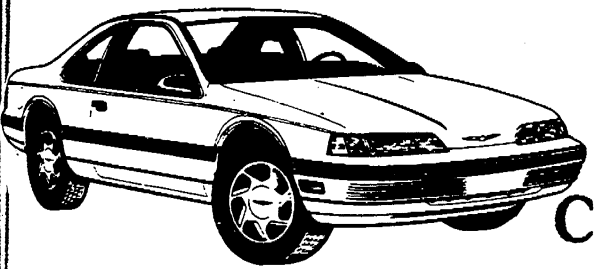


1990 TAURUS GL
Automatic, air, air bag, tilt/cruise.



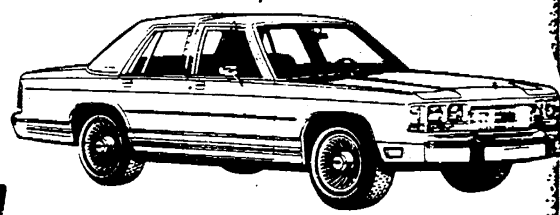
**HURRY!
THESE WON'T
LAST!**

ONLY \$10,995
2 to choose



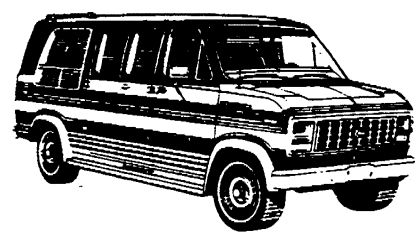
1990 THUNDERBIRD LX
Automatic, air, loaded. Low miles.

ONLY \$12,995
2 to choose



1990 CROWN VICTORIA LX
Loaded, loaded!

**PRICES SO LOW
THEY SCARE
THE COMPETITION!**

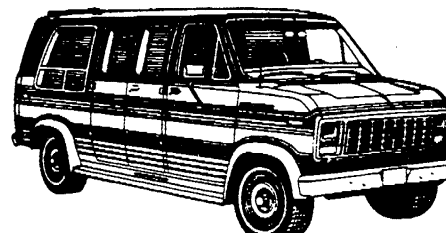


1990 SANDS VAN
ONLY \$18,495

302 V-8, power windows & locks, rear air, removable captains chairs, tri-fold bed, fiberglass boards, TV hook-up, magazine holder, tilt, cruise, console, rear table, rear door power lock control, much more.



1990 CABRIOLET VAN
ONLY \$21,995



351 V-8, trailer tow package class III hitch, custom paint, two stereos, video cassette player, CB, oak console, TV, cassette holder, tinted windows, rear air, fiberglass boards, sport wheels, power tri-fold bed and more!

**DOLLAR
FOR
TRADE**

MIDWEST  **FORD**

510 W. Main St.,
Manchester, MI
313-428-8343 or 1-800-388-0046

OPEN: Mon. & Thurs. 9-8
Tues., Wed., Fri. 9-6
Sat. 9-1

